

TERRAIN PHOTOGRAPHS
AMERICAN WORLD WAR BATTLEFIELDS
IN EUROPE

32ND DIVISION
AISNE-MARNE OFFENSIVE
JULY 27 - AUGUST 6, 1918
(PART TWO)

PREPARED BY
THE AMERICAN BATTLE MONUMENTS
COMMISSION

THE COMMAND AND STAFF COLLEGE
LIBRARY



Class Symbol M 9403-H6-C.73-G3-C32

Accession Number N 69598

PREFACE

THIS album is part of a collection of photographs of the various battlefields in Europe upon which the Armed Forces of the United States were actively engaged during World War I.

These terrain photographs were taken and prepared by the American Battle Monuments Commission, as provided in the act of Congress of March 4, 1923, to complete the historical record of the operations of the American units. The series comprises 69 albums containing 1,396 photographs.

The contents of these albums will be of particular value when studied in conjunction with the Summaries of Operations, prepared by the American Battle Monuments Commission, which relate in detail the combat services of each American division.

On the page preceding the photographs will be found a small-scale key map showing the general operation of which this divisional operation was a part. In the pocket inside the back cover will be found a reprint of a 1:20,000 map, of the type used during the war, showing the operation covered by the photographs in this

album. On this index map have been indicated the position of the camera and the direction in which it was sighted in taking each photograph.

On the page opposite each photograph is a section of the 1:20,000 map of the terrain in the vicinity of that pertaining to the photograph. The white wedge-shaped portion of the map indicates the sector of terrain which actually appears in the picture. The plotted position of the camera and the axis of the picture are shown in blue, the length of the blue line approximately indicating the depth of the view. The circled number corresponds to the number of the photograph, of which the numerals before the dash indicate the division and the numerals after the dash indicate the serial number of the photograph in this division.

Various topographical features visible in the photographs have been indicated by name to facilitate orientation.

Complete sets of these albums have been deposited with the National Archives, the Library of Congress, the Historical Division of the War Department General Staff, and the Command and Staff College.

AMERICAN BATTLE MONUMENTS COMMISSION,

John J. Pershing
CHAIRMAN

NOV 22 1945

32ND DIVISION
AISNE-MARNE OFFENSIVE
JULY 27—AUGUST 6, 1918

JULY 18-AUGUST 6, 1918

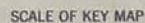
 Area Covered by Operation Shown on Summary Map

 Ground Gained by American Divisions

 Ground Gained by French Divisions

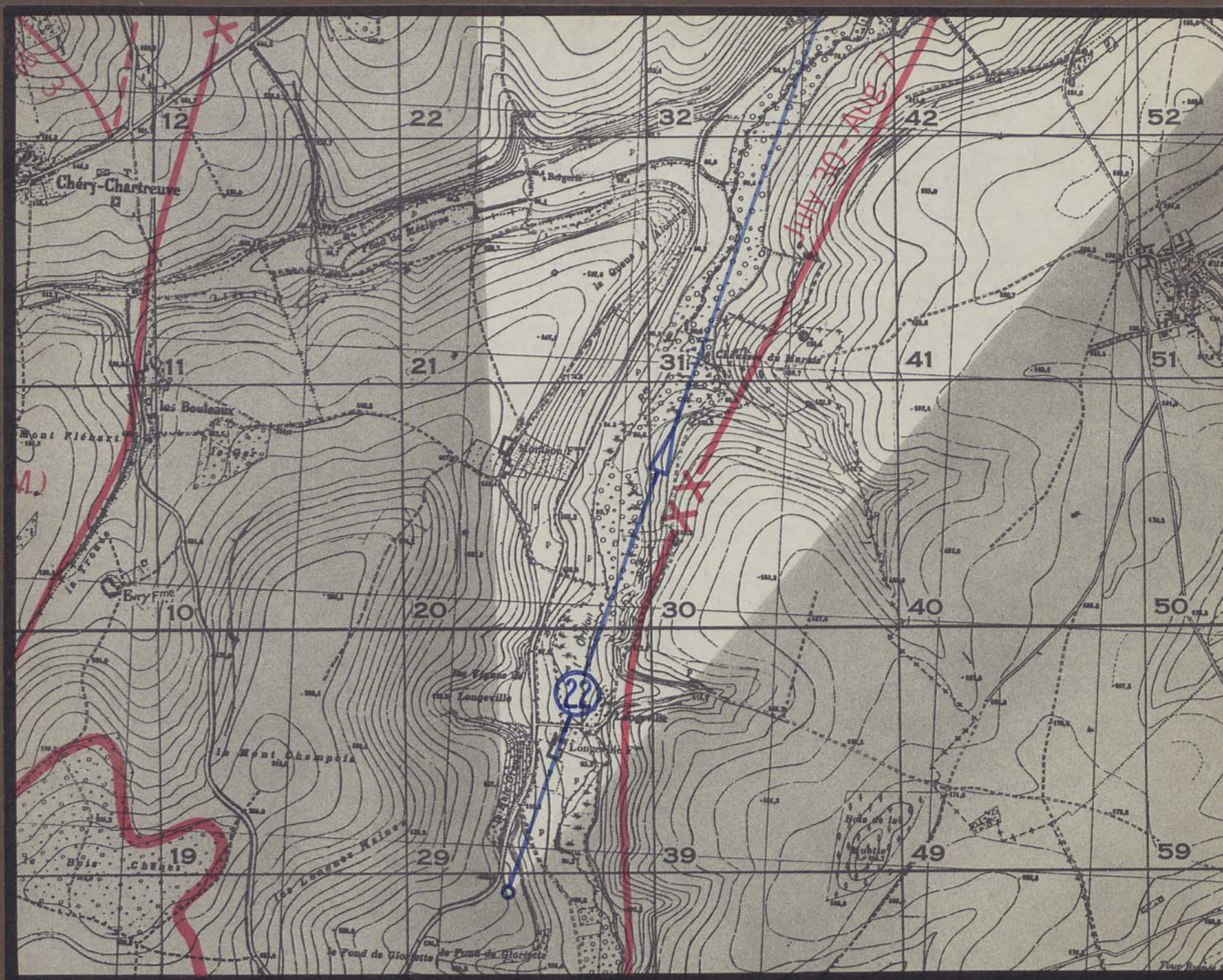
Front Line

Circled numeral indicates American Division



0 1 2 3 4 5 6 7 8 9 10 Miles

0 2 4 6 8 10 12 14 16 Kilometers



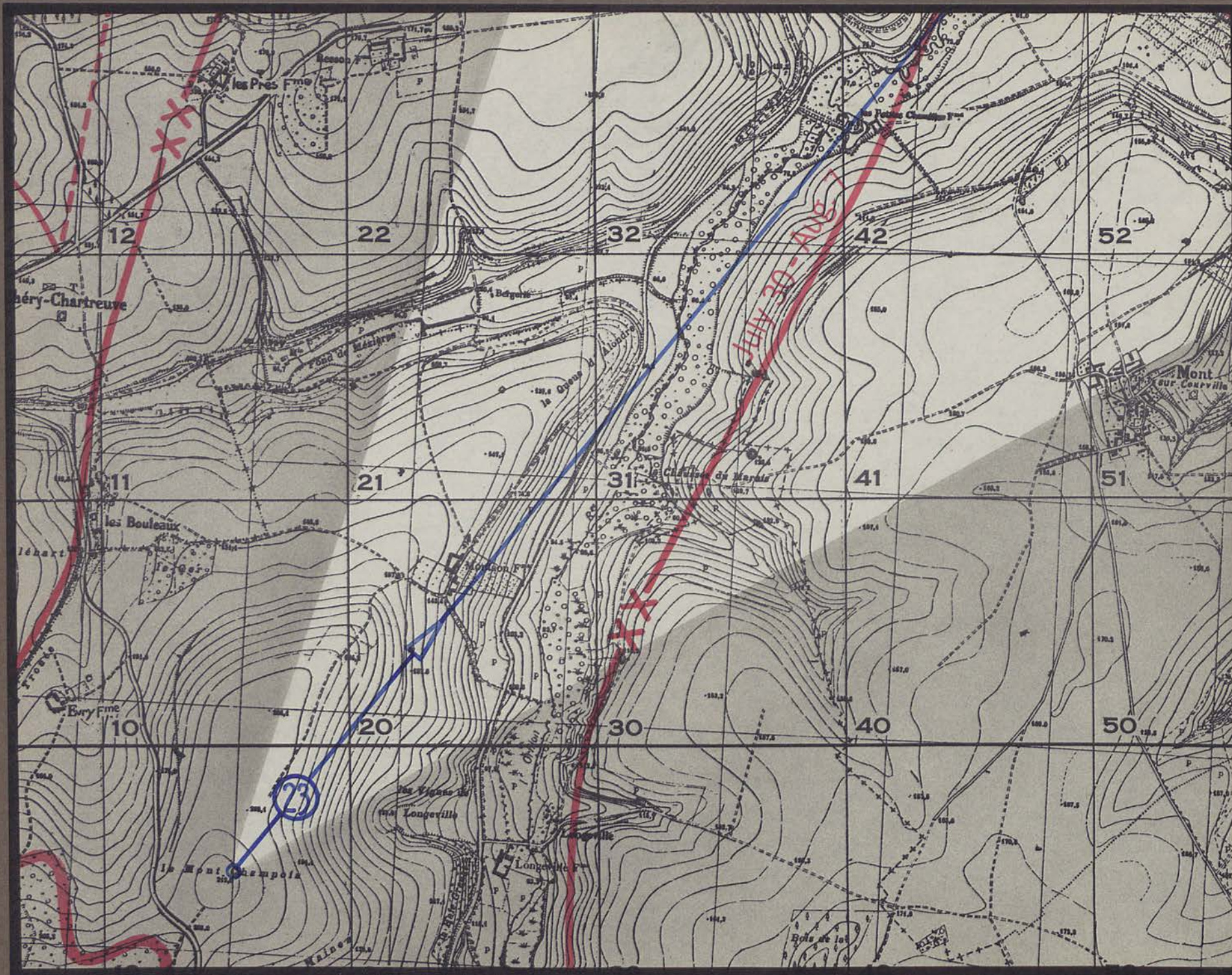
Dravegny-St Gilles road

la Haie Grenat

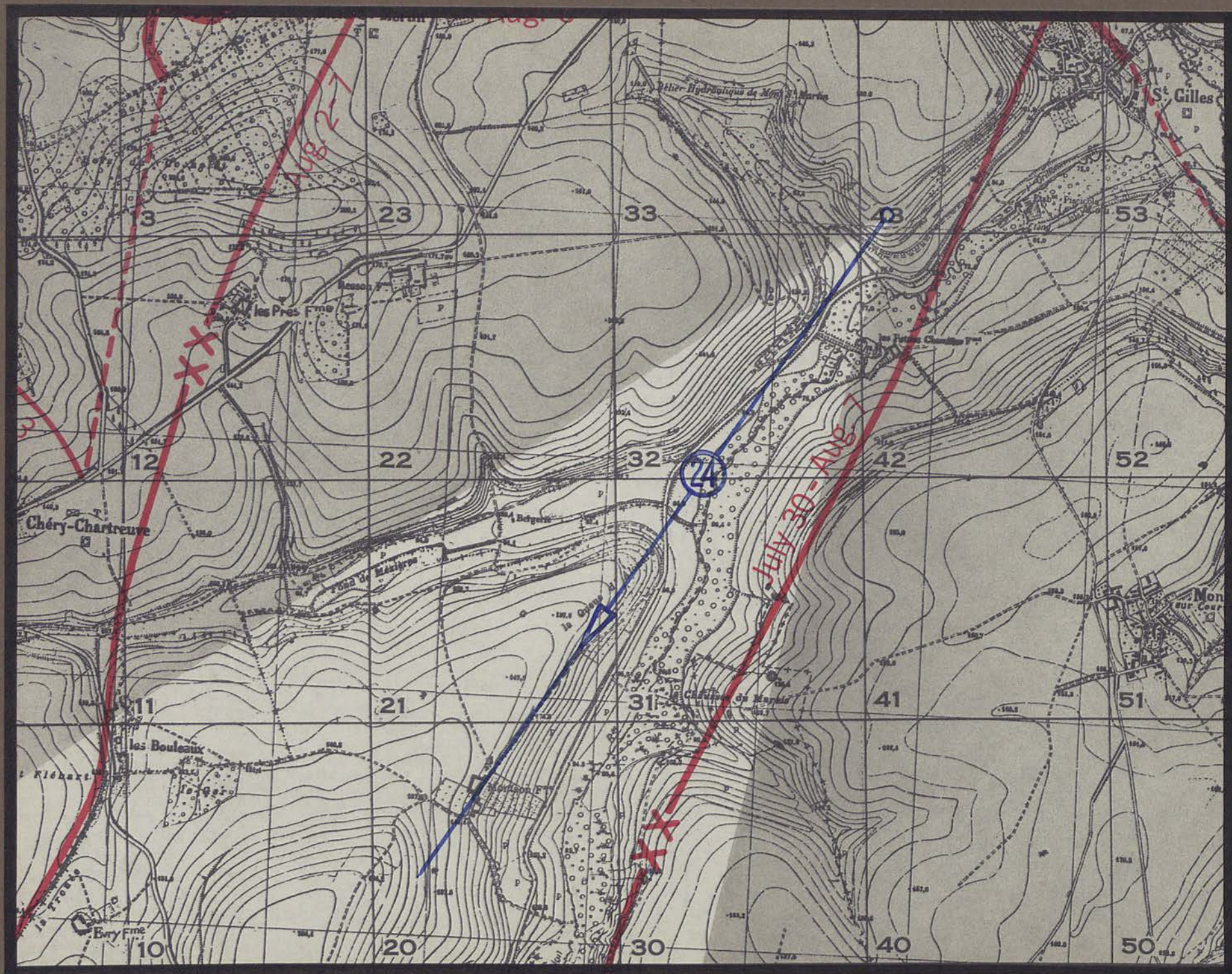
Longeville Fm

Longeville

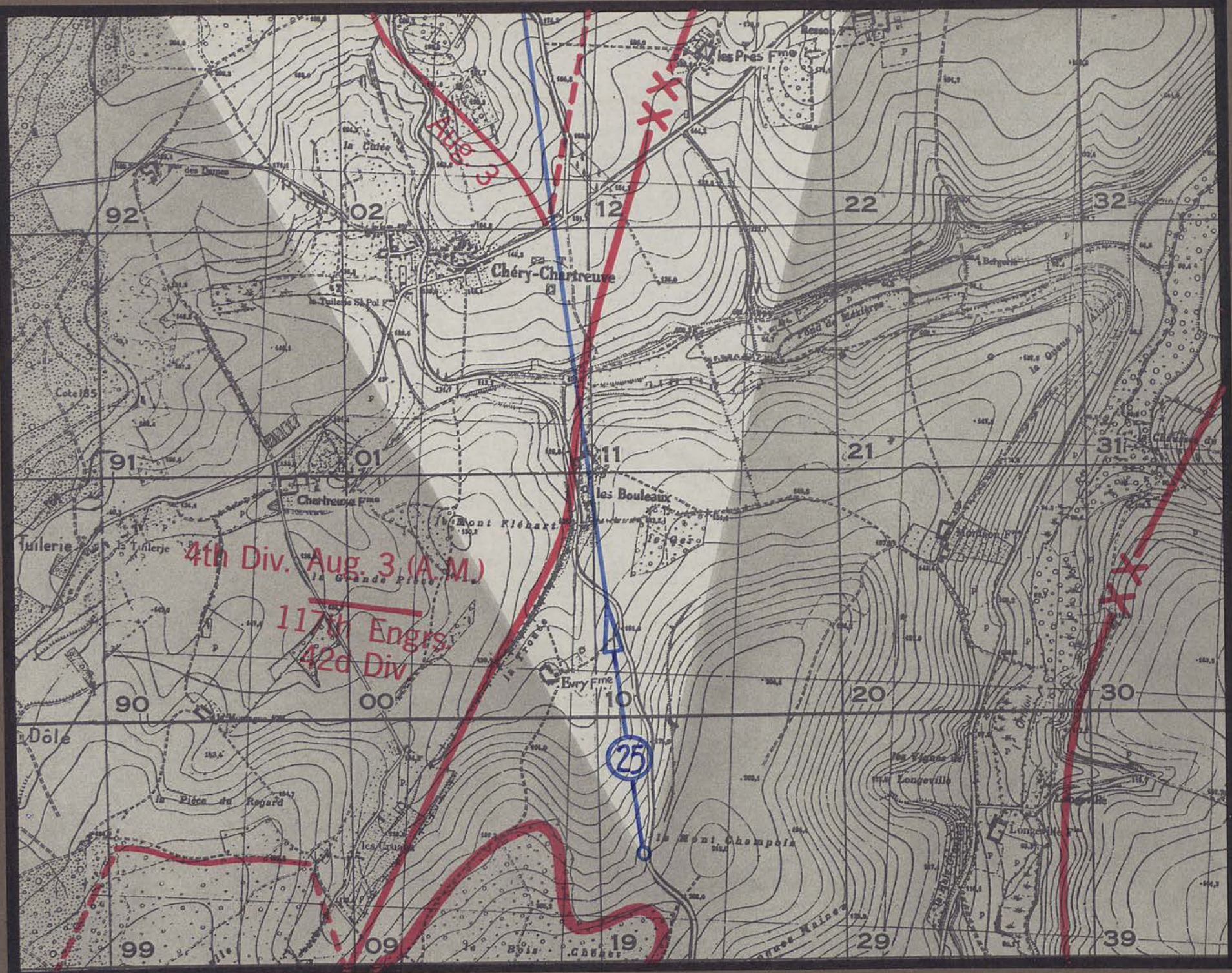






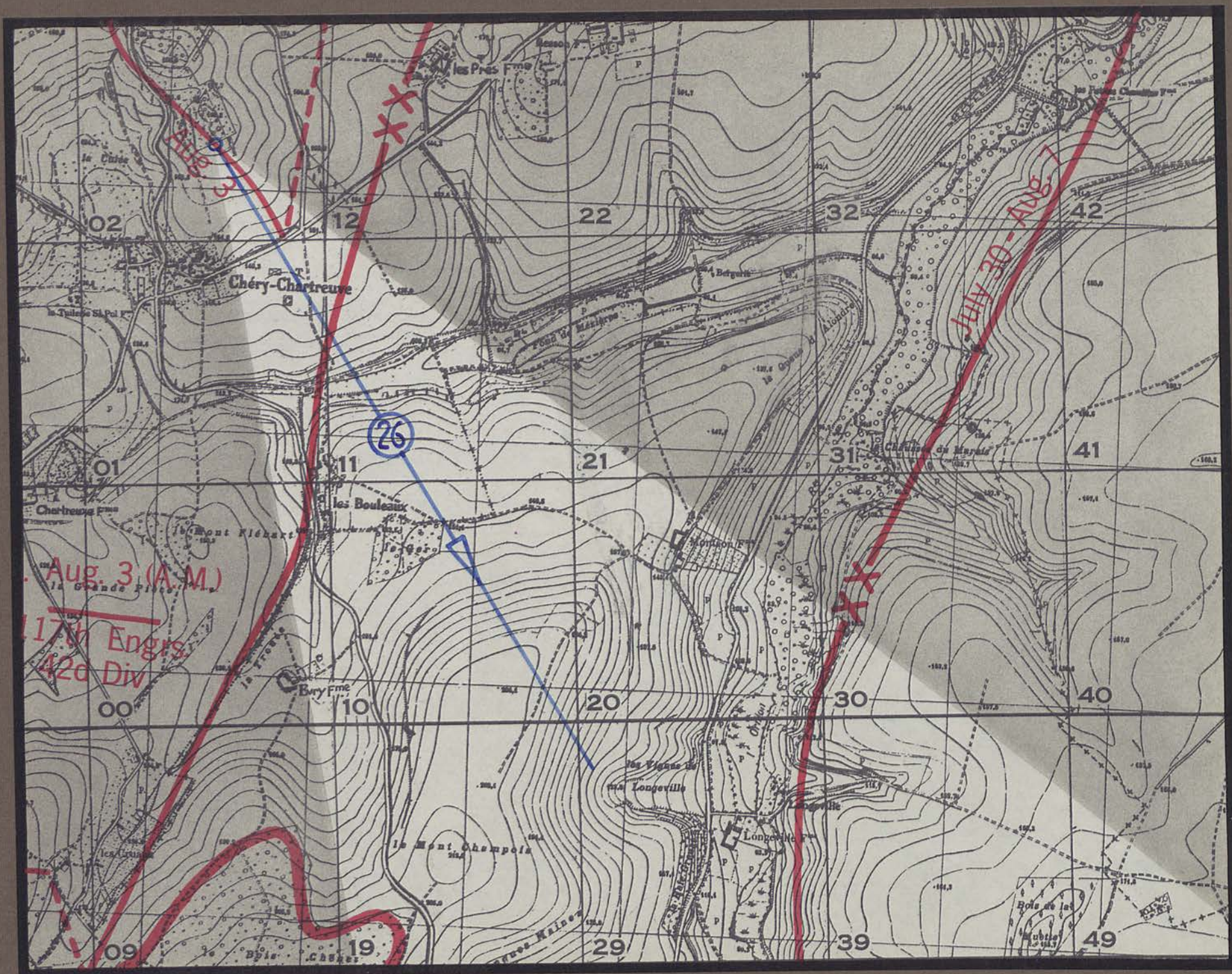




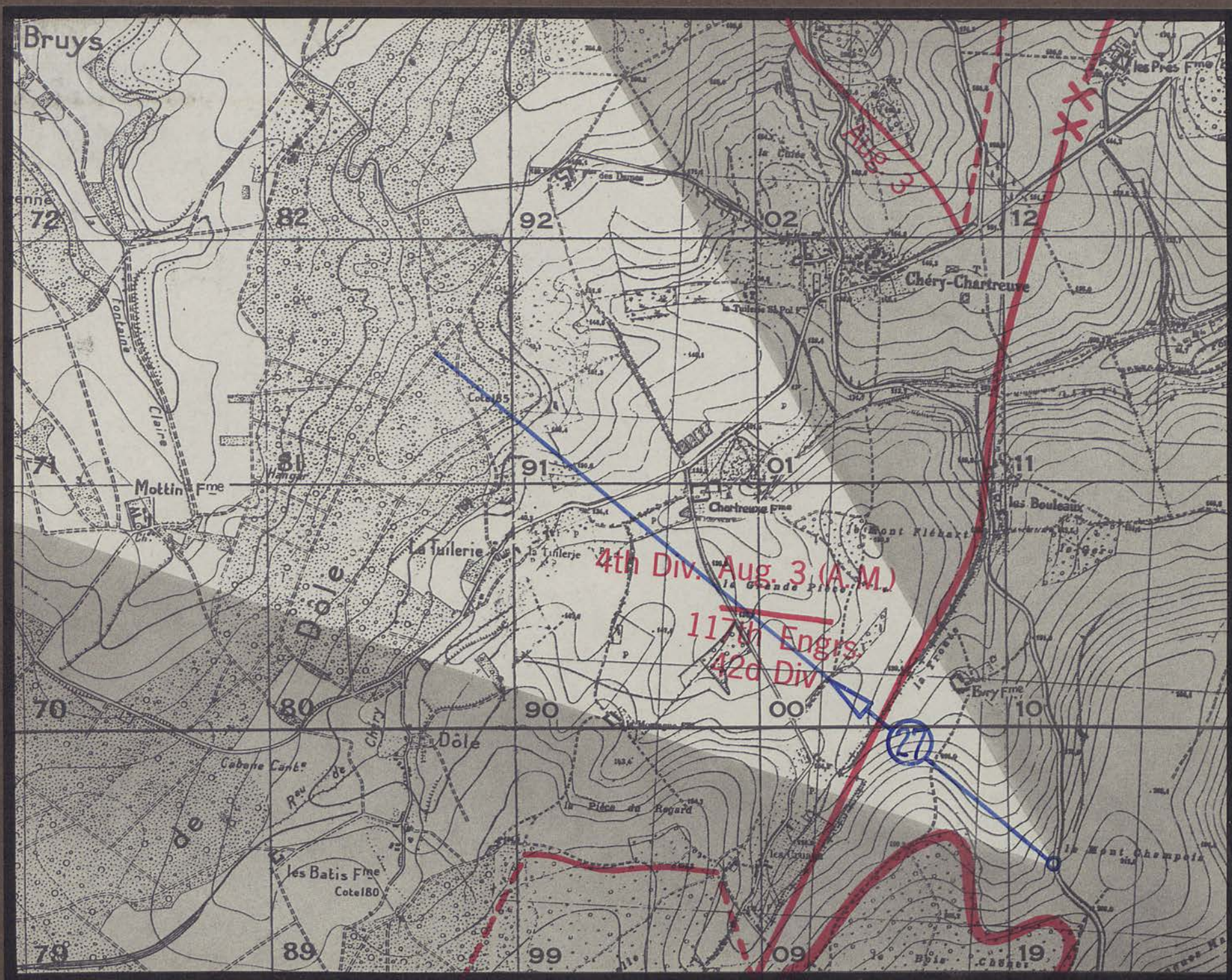


Evry Fm B. des Clercs Chéry-Chartreuve road to Mont Notre Dame les Bouleaux road to St Thibaut le Ger B. du Cochelet les Prés Fm Chéry-Chartreuve Dravegny road









Forêt de Dôle

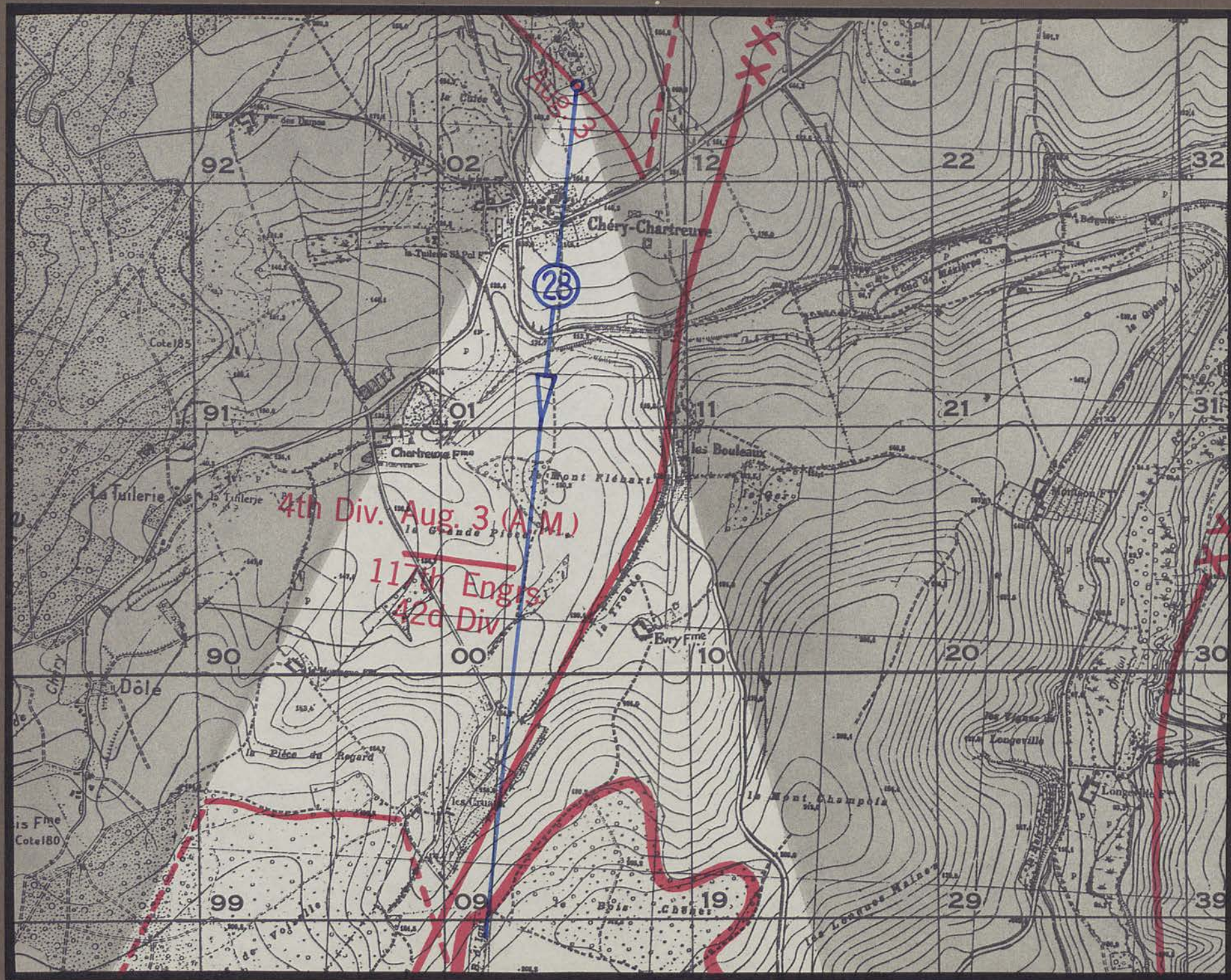
Chartreuse Fm

Fm^e des Dames

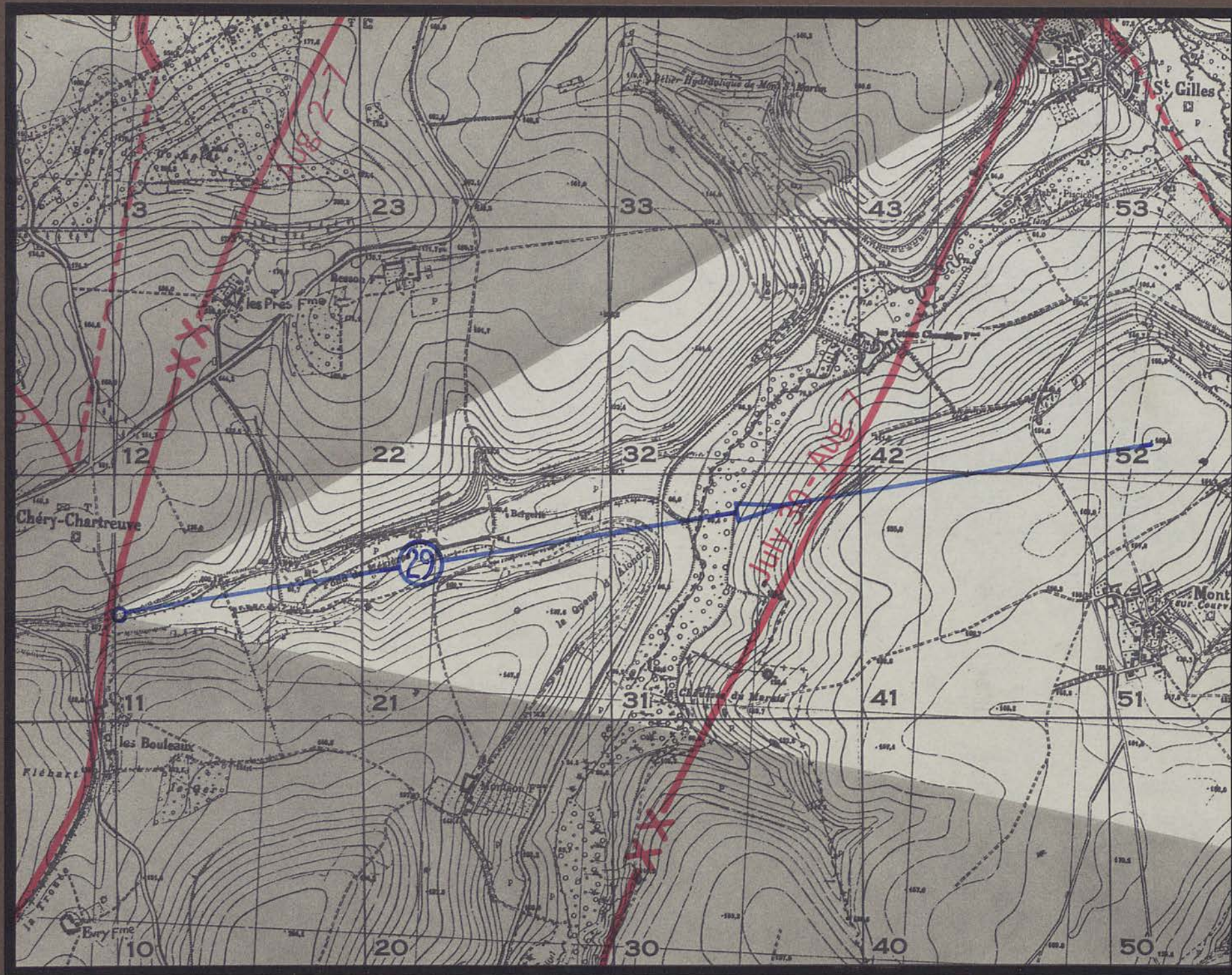
les Grands Hureaux

Evry Fm



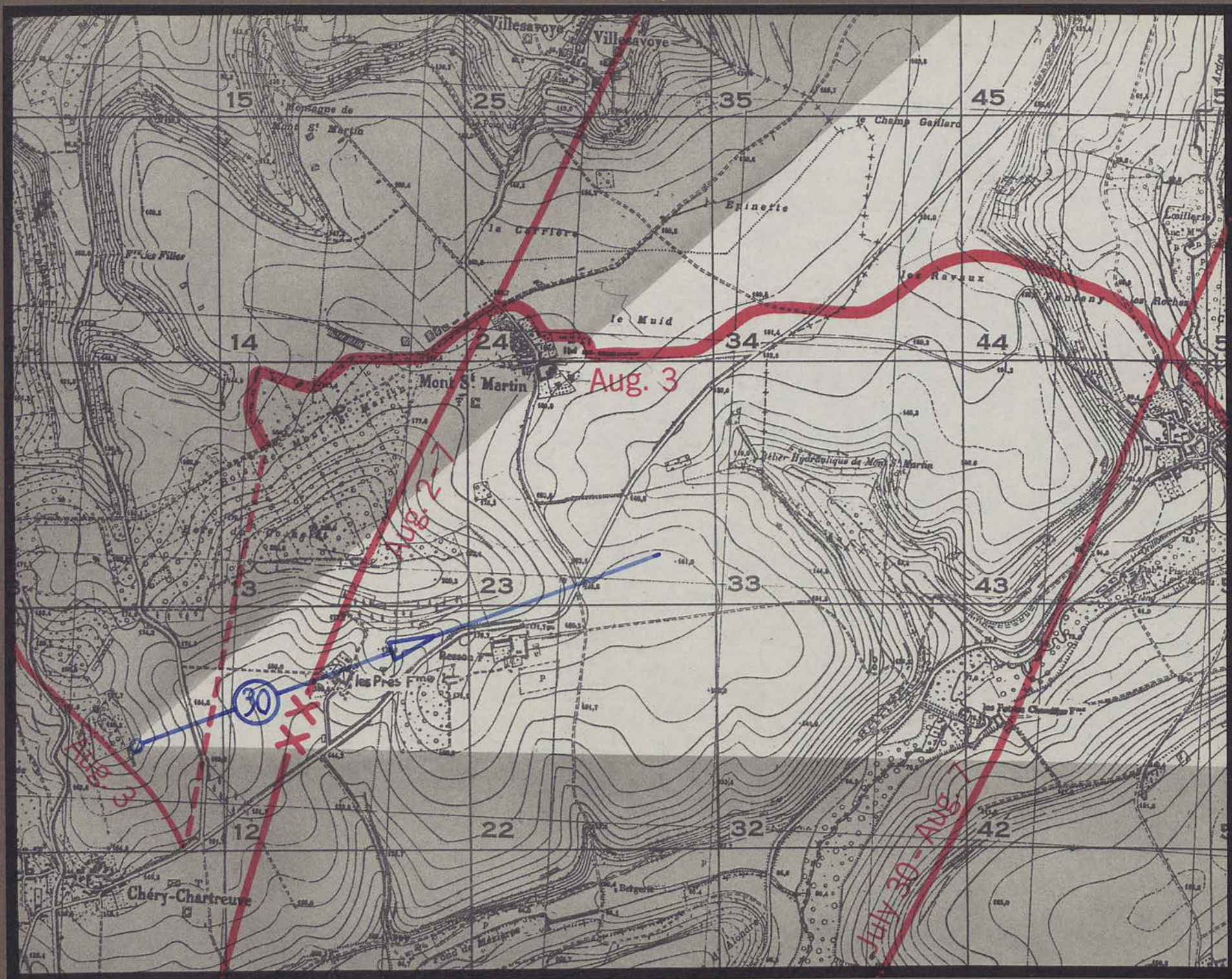






Fond de Mezières







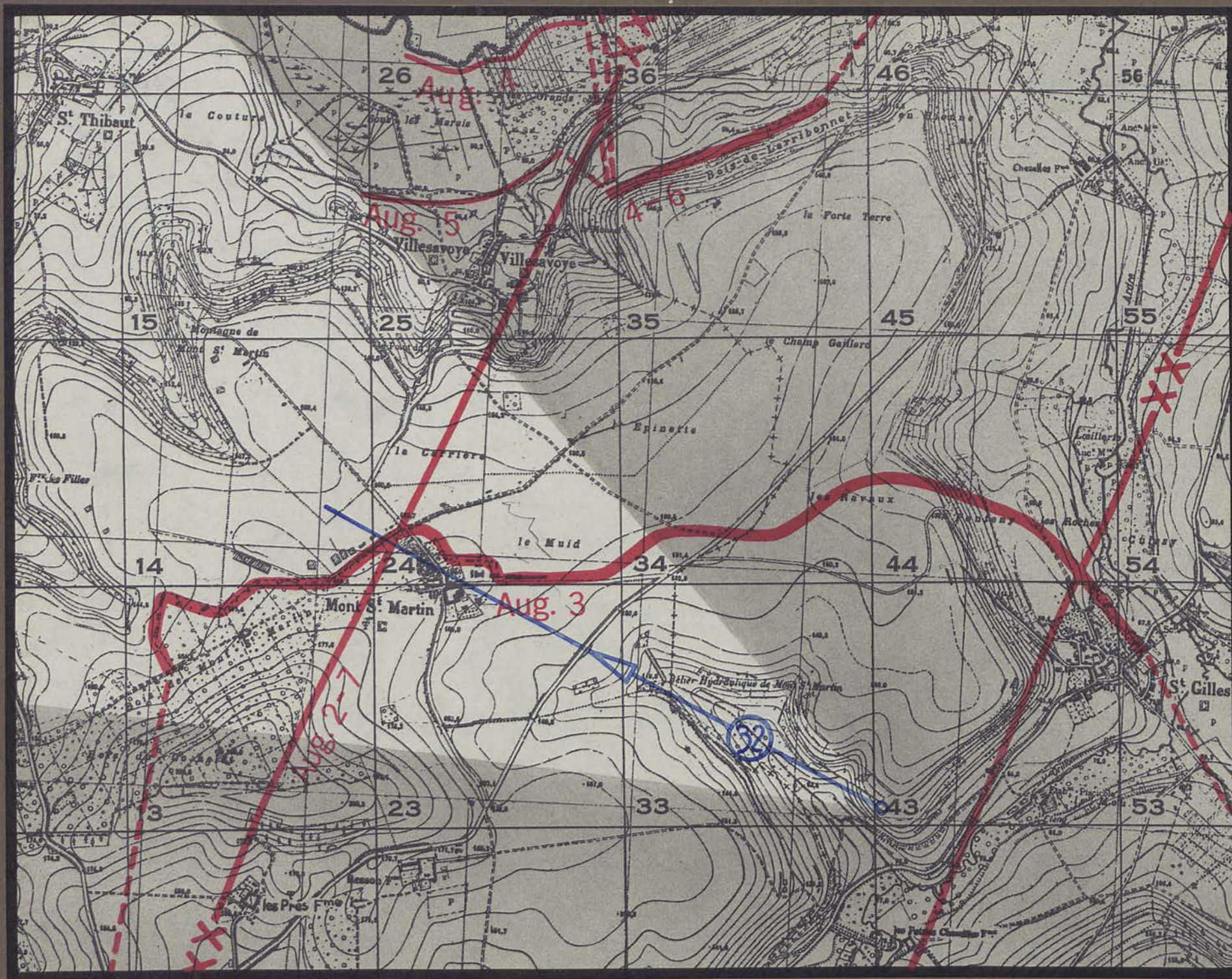


to M^t S^t Martin and Villedavoye

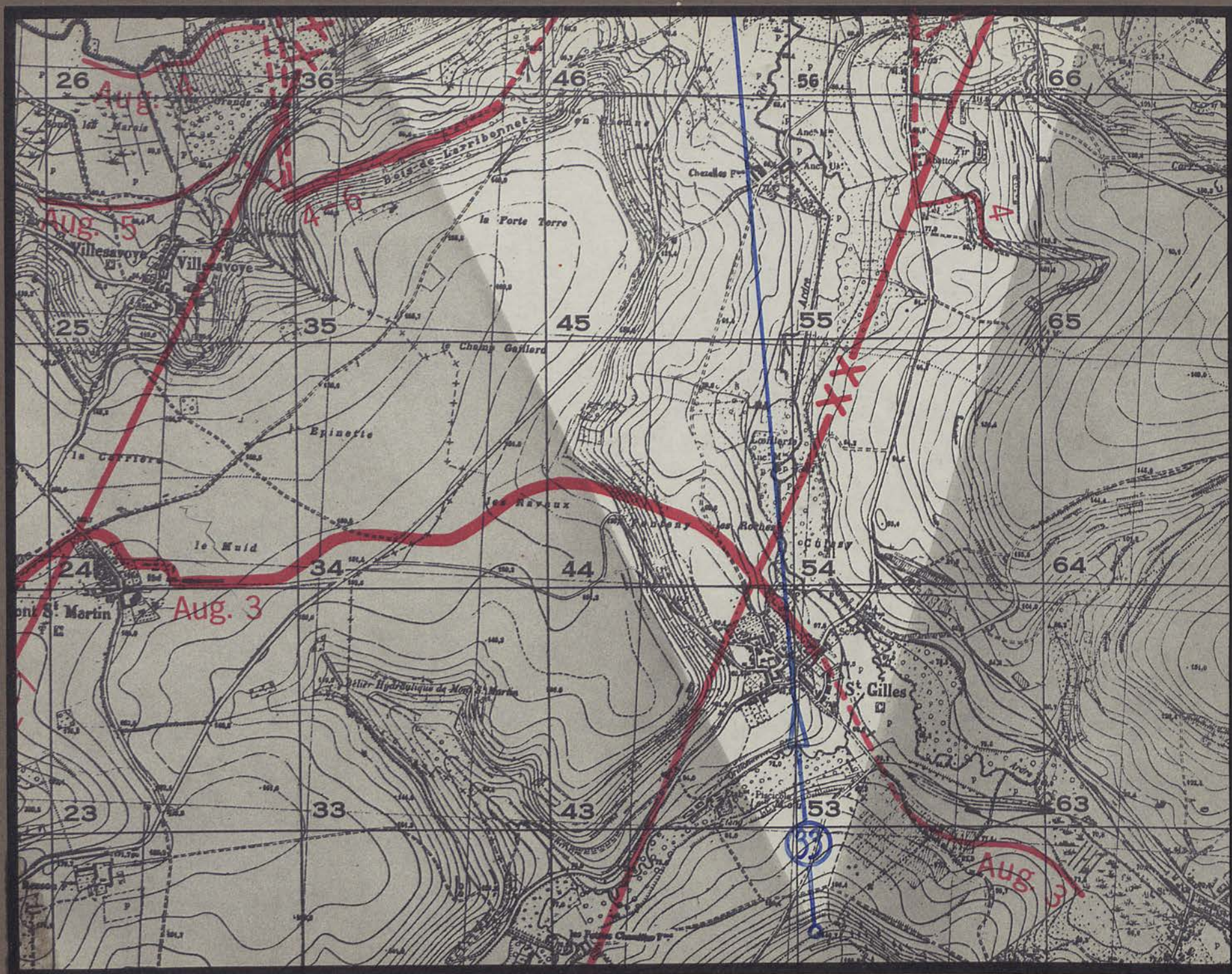
M^t S^t Martin

to Fismes →

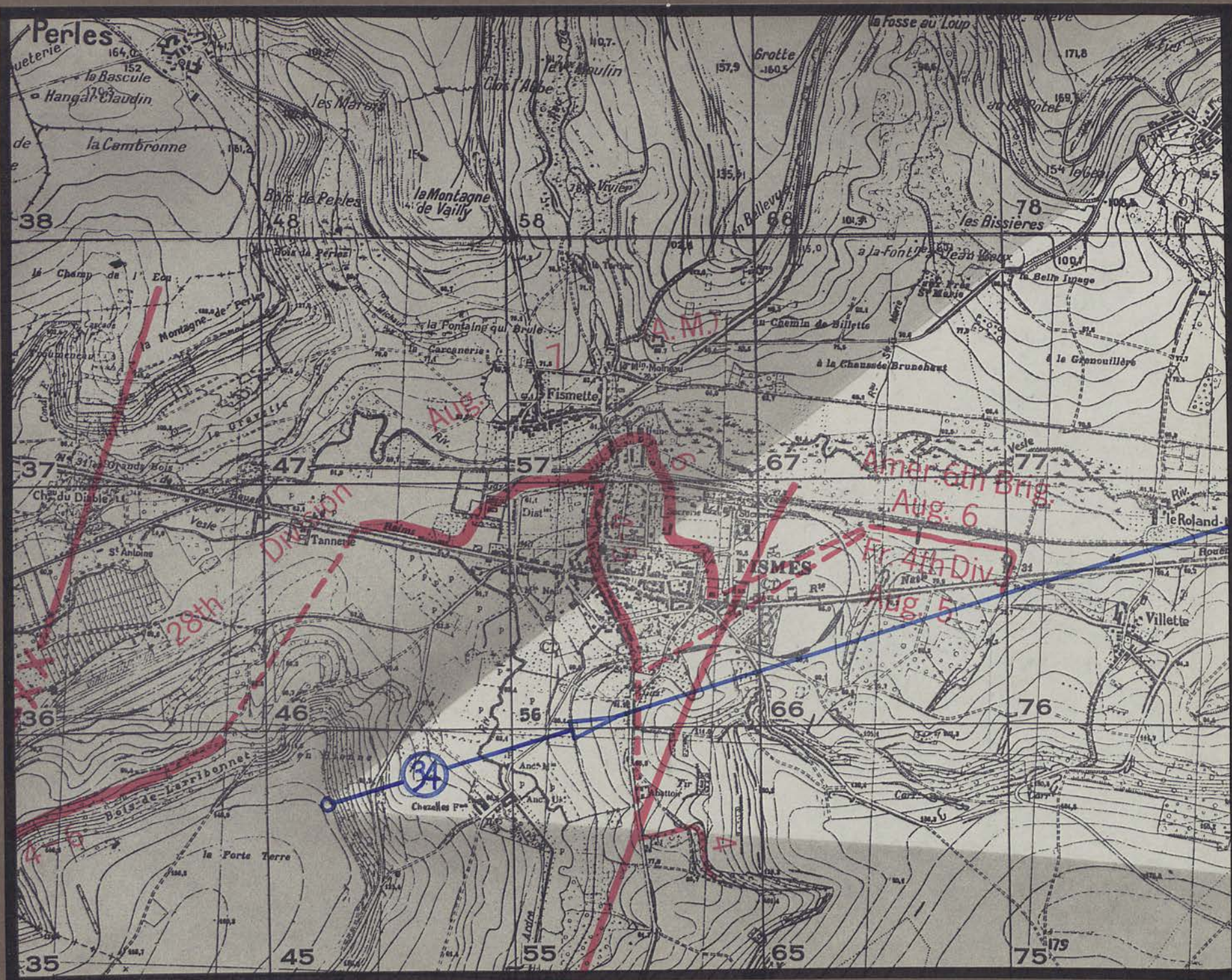












Baslieux

Vesle River

Fismes

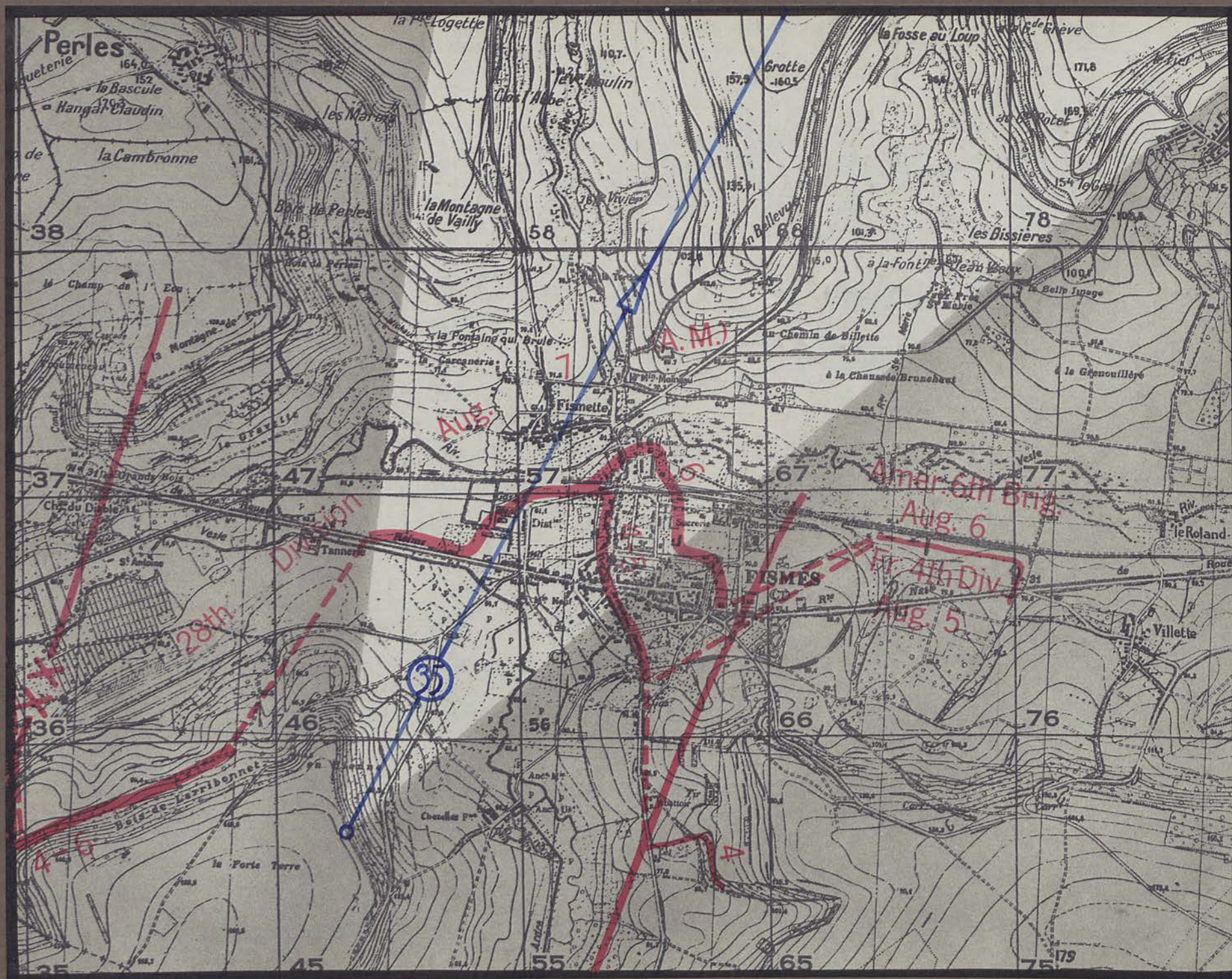
Fismes-Chery Chartreuse road

Chezelles Fm

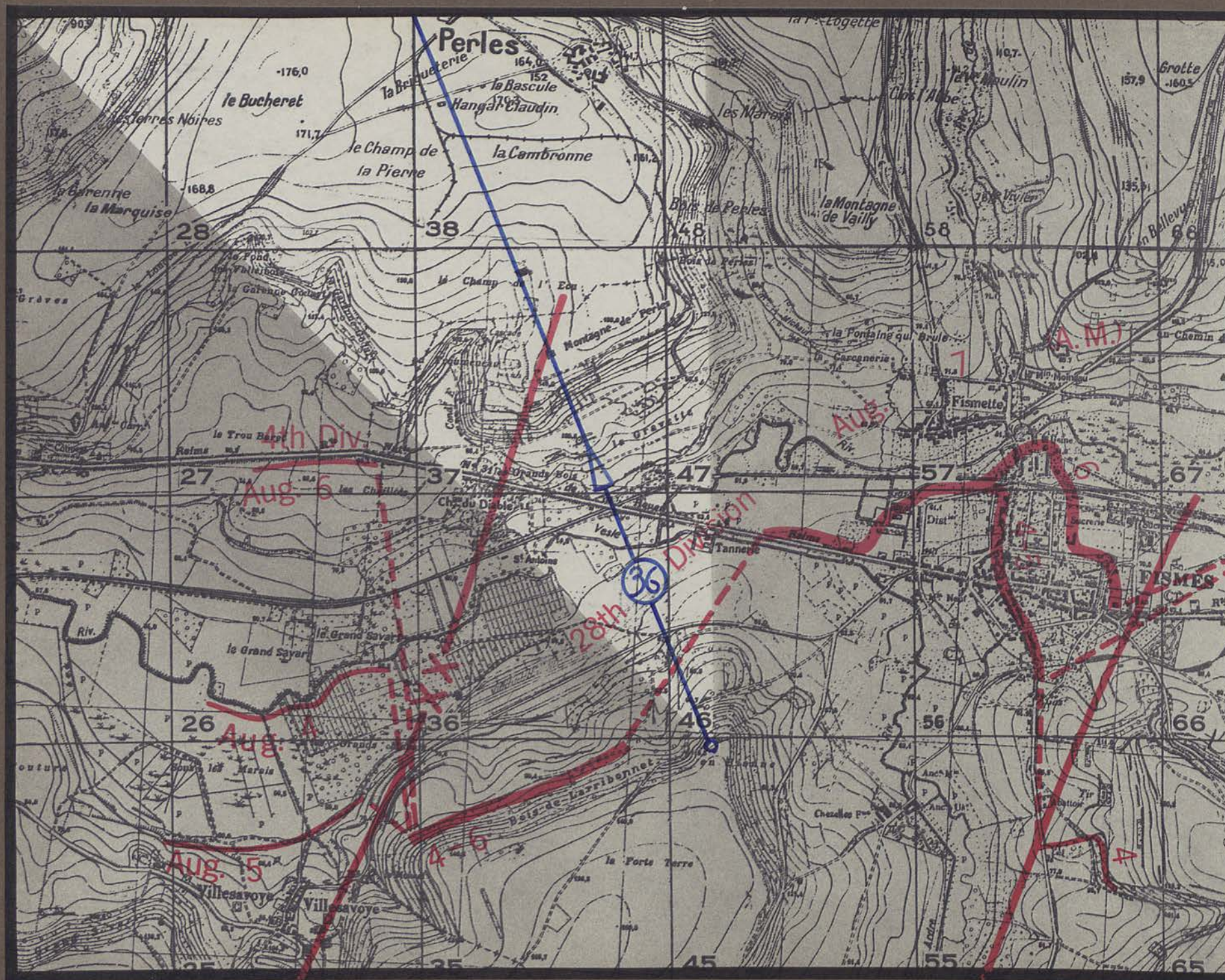
Fismes-St Gilles road

Abattoir









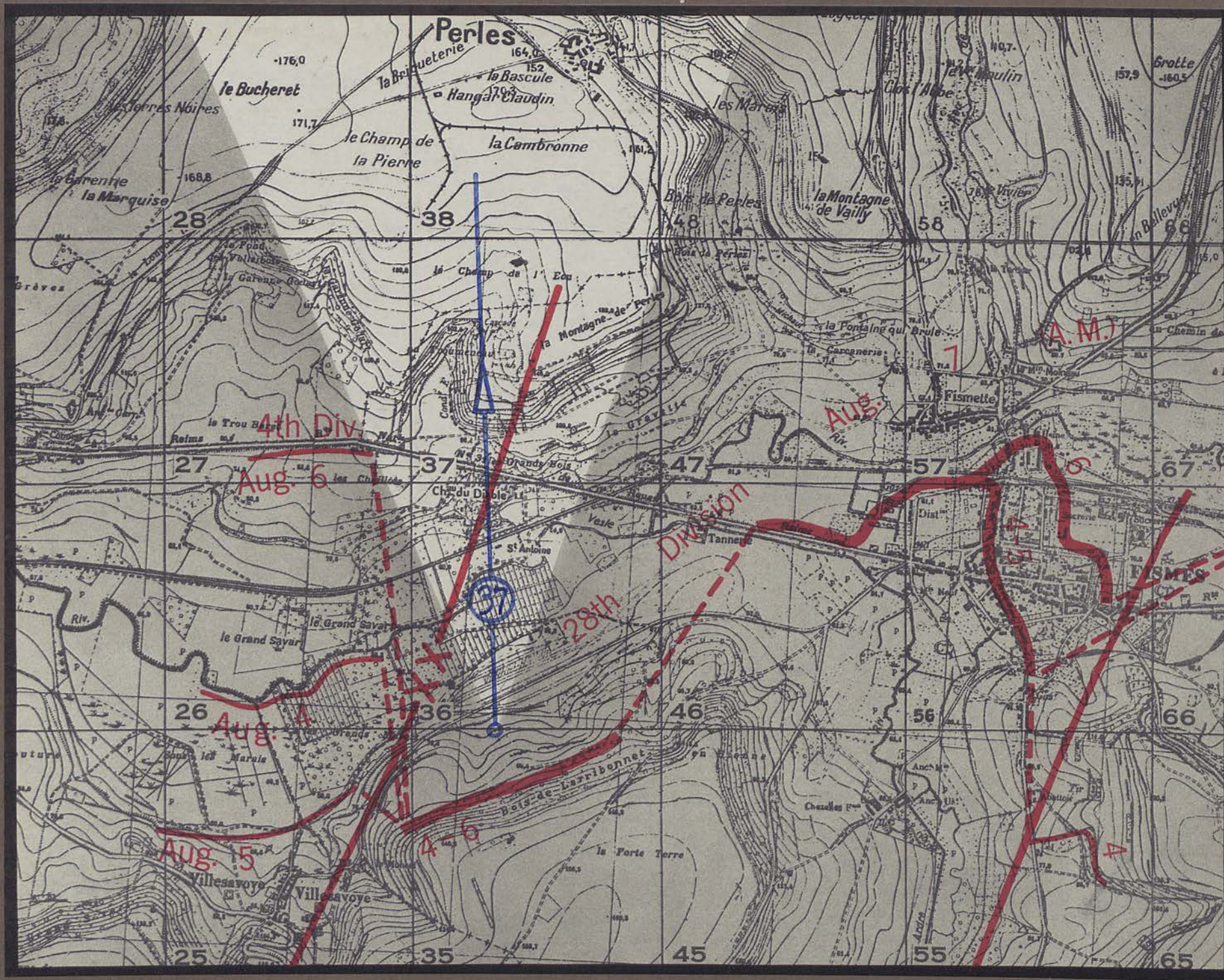
R.R. Château du Diable

Soissons-Reims
highway

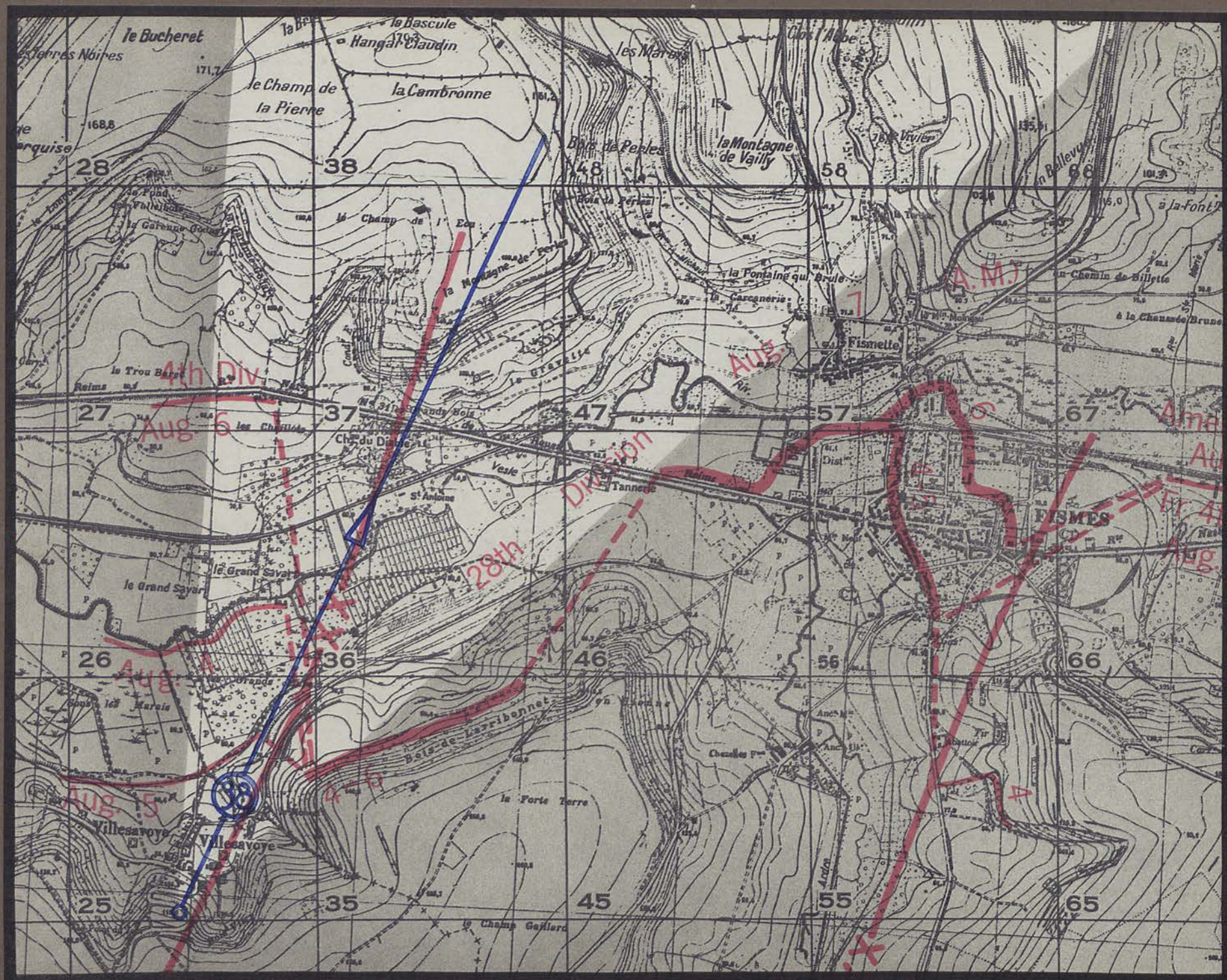
Vesle R.

Perles





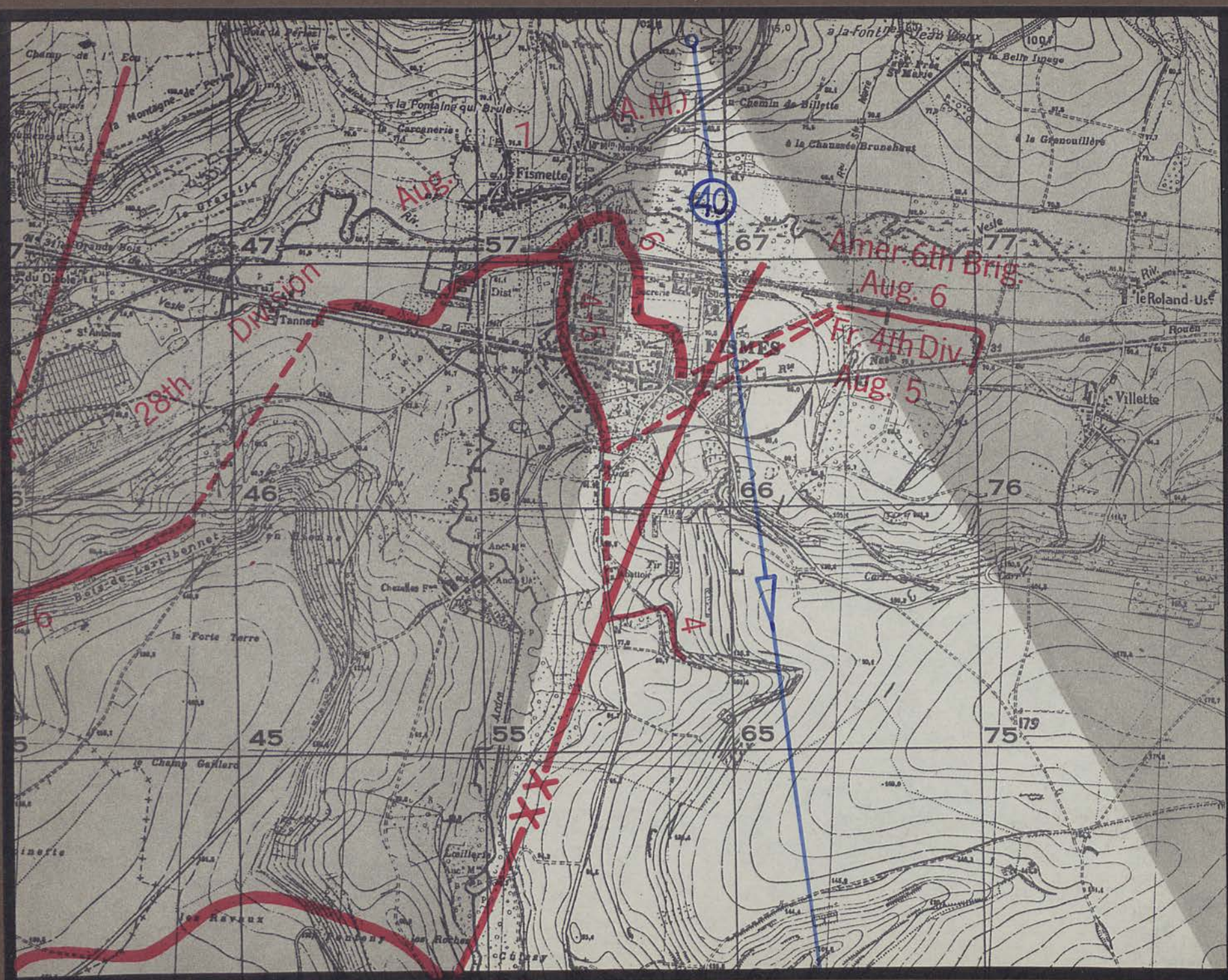














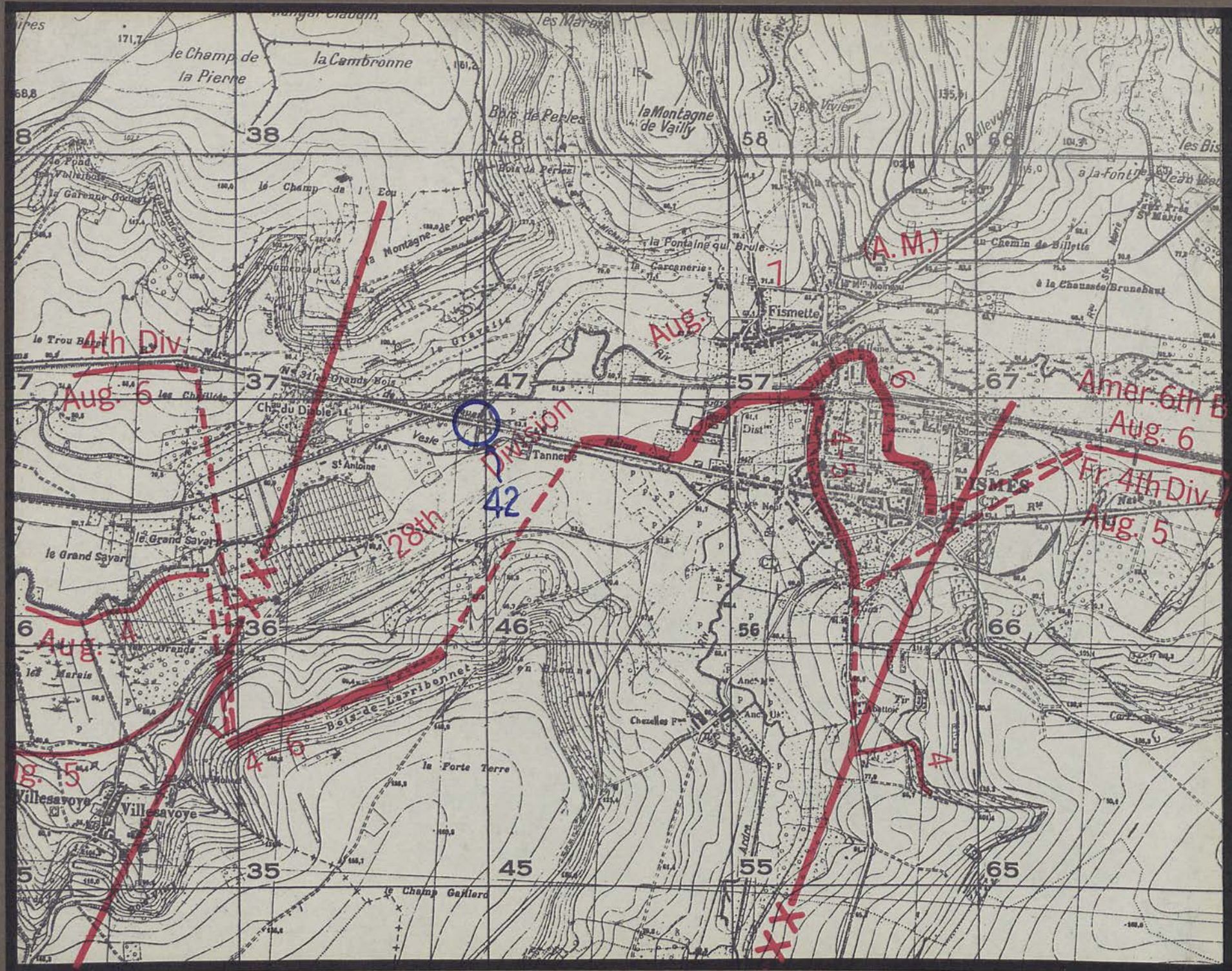
Reims-Soissons highway

R.R.

Vesle R.

Fismes

St Gilles



Vesle River near Flomes



69582



LIBRARY
COMMAND
AND
STAFF
COLLEGE

