

UNCLASSIFIED

AD NUMBER
ADB274286
NEW LIMITATION CHANGE
TO Approved for public release, distribution unlimited
FROM Distribution authorized to U.S. Gov't. agencies only; Proprietary Info.; Aug 2001. Other requests shall be referred to U.S. Army Medical Research and Materiel Command, 504 Scott St., Ft. Detrick, MD 21702-5012.
AUTHORITY
USAMRC LTR, 26 Aug 2002

THIS PAGE IS UNCLASSIFIED

AD _____

Award Number: DAMD17-98-1-8146

TITLE: Characterization of an Adhesion-Associated Tumor
Suppressor in Breast Cancer

PRINCIPAL INVESTIGATOR: Michael S. Kinch, Ph.D.

CONTRACTING ORGANIZATION: Purdue Research Foundation
West Lafayette, Indiana 47907-1021

REPORT DATE: August 2001

TYPE OF REPORT: Final

PREPARED FOR: U.S. Army Medical Research and Materiel Command
Fort Detrick, Maryland 21702-5012

DISTRIBUTION STATEMENT: Distribution authorized to U.S. Government
agencies only (proprietary information, Aug 01). Other requests
for this document shall be referred to U.S. Army Medical Research
and Materiel Command, 504 Scott Street, Fort Detrick, Maryland
21702-5012.

The views, opinions and/or findings contained in this report are
those of the author(s) and should not be construed as an official
Department of the Army position, policy or decision unless so
designated by other documentation.

20020117 057

4.

2

LIMITED RIGHTS LEGEND

Award Number: DAMD17-98-1-8146
Organization: Purdue Research Foundation

Those portions of the technical data contained in this report marked as limited rights data shall not, without the written permission of the above contractor, be (a) released or disclosed outside the government, (b) used by the Government for manufacture or, in the case of computer software documentation, for preparing the same or similar computer software, or (c) used by a party other than the Government, except that the Government may release or disclose technical data to persons outside the Government, or permit the use of technical data by such persons, if (i) such release, disclosure, or use is necessary for emergency repair or overhaul or (ii) is a release or disclosure of technical data (other than detailed manufacturing or process data) to, or use of such data by, a foreign government that is in the interest of the Government and is required for evaluational or informational purposes, provided in either case that such release, disclosure or use is made subject to a prohibition that the person to whom the data is released or disclosed may not further use, release or disclose such data, and the contractor or subcontractor or subcontractor asserting the restriction is notified of such release, disclosure or use. This legend, together with the indications of the portions of this data which are subject to such limitations, shall be included on any reproduction hereof which includes any part of the portions subject to such limitations.

THIS TECHNICAL REPORT HAS BEEN REVIEWED AND IS APPROVED FOR PUBLICATION.

01/03/2

REPORT DOCUMENTATION PAGEForm Approved
OMB No. 074-0188

Public reporting burden for this collection of information is estimated to average 1 hour per response, including the time for reviewing instructions, searching existing data sources, gathering and maintaining the data needed, and completing and reviewing this collection of information. Send comments regarding this burden estimate or any other aspect of this collection of information, including suggestions for reducing this burden to Washington Headquarters Services, Directorate for Information Operations and Reports, 1215 Jefferson Davis Highway, Suite 1204, Arlington, VA 22202-4302, and to the Office of Management and Budget, Paperwork Reduction Project (0704-0188), Washington, DC 20503

1. AGENCY USE ONLY (Leave blank)		2. REPORT DATE August 2001	3. REPORT TYPE AND DATES COVERED Final (01 Aug 98 - 31 Jul 01)	
4. TITLE AND SUBTITLE Characterization of an Adhesion-Associated Tumor Suppressor in Breast Cancer			5. FUNDING NUMBERS DAMD17-98-1-8146	
6. AUTHOR(S) Michael S. Kinch, Ph.D.				
7. PERFORMING ORGANIZATION NAME(S) AND ADDRESS(ES) Purdue Research Foundation West Lafayette, Indiana 47907-1021 E-Mail: kinch@purdue.edu			8. PERFORMING ORGANIZATION REPORT NUMBER	
9. SPONSORING / MONITORING AGENCY NAME(S) AND ADDRESS(ES) U.S. Army Medical Research and Materiel Command Fort Detrick, Maryland 21702-5012			10. SPONSORING / MONITORING AGENCY REPORT NUMBER	
11. SUPPLEMENTARY NOTES				
12a. DISTRIBUTION / AVAILABILITY STATEMENT Distribution authorized to U.S. Government agencies only (proprietary information, Aug 01). Other requests for this document shall be referred to U.S. Army Medical Research and Materiel Command, 504 Scott Street, Fort Detrick, Maryland 21702-5012.				12b. DISTRIBUTION CODE
13. ABSTRACT (Maximum 200 Words) The D7 antigen was identified in a screen of monoclonal antibodies that recognized tyrosine kinases and their substrates in breast cancer cells. D7 was found to be differentially expressed in normal, non-malignant and malignant breast epithelial cells. In our funded proposal, we identified D7 as the EphA2 receptor tyrosine kinase. We also found that EphA2 function is regulated by the E-cadherin tumor suppressor protein. Specifically, E-cadherin causes EphA2 to negatively regulate breast cancer cell growth and invasiveness. However, in the most aggressive breast cancers, E-cadherin function is frequently lost. Consequently, the EphA2 in metastatic cells is overexpressed and functionally altered and these changes cause EphA2 to promote metastatic cell growth. These defects in EphA2 could be overcome using monoclonal antibodies or fusion proteins and this facilitated selective inhibition of the growth and invasiveness of metastatic breast cancer cells. The information learned in our studies has identified a key regulator of breast cancer cell growth and invasiveness. Moreover, our studies indicate that EphA2 holds potential as a target for therapeutic intervention against metastatic breast cancer.				
14. SUBJECT TERMS Breast cancer, EphA2, Tyrosine Kinase			15. NUMBER OF PAGES 49	
			16. PRICE CODE	
17. SECURITY CLASSIFICATION OF REPORT Unclassified	18. SECURITY CLASSIFICATION OF THIS PAGE Unclassified	19. SECURITY CLASSIFICATION OF ABSTRACT Unclassified	20. LIMITATION OF ABSTRACT Unlimited	

TABLE OF CONTENTS:

FRONT COVER

REPORT DOCUMENTATION PAGE 2

TABLE OF CONTENTS 3

INTRODUCTION 4

BODY 4

KEY RESEARCH ACCOMPLISHMENTS 7

REPORTABLE OUTCOMES 7

CONCLUSIONS 8

REFERENCES 9

APPENDICES 11

INTRODUCTION

It is generally understood that cancer is a disease of aberrant signal transduction. In particular, the expression levels or function of receptor tyrosine kinases are frequently elevated in malignant cells. The purpose of our funded project was to identify one particular receptor tyrosine kinase, which was identified using D7 monoclonal antibodies. Our interest in the D7 antigen centered upon its differential expression in benign and malignant cells. Once identified, we sought to overexpress the gene that encodes for the D7 antigen in D7-deficient mammary epithelial cells and test for changes in cell growth and invasiveness.

BODY

Identification of the D7 Antigen (Objectives 1A and 1B)

In the search for the causes of breast cancer, many different lines of investigation have identified elevated levels of tyrosine kinase in breast cancer cells (Cance and Liu, 1995). However, the tyrosine kinases that are responsible for this signaling remain largely unknown. Our laboratory became interested in tyrosine kinase activity in breast cancer cells upon noting that elevated levels of tyrosine phosphorylation cause a dramatic reorganization of cellular adhesions and thereby promote a malignant phenotype (Kinch and Burridge, 1995a; Kinch et al., 1995b). We had also demonstrated that general inhibitors of tyrosine kinase activity (e.g., herbimycin, genistein) could revert the adhesive phenotype of malignant cells to that of non-transformed mammary epithelial cells. To identify the specific tyrosine kinases that were responsible for this phenotype, we generated a panel of monoclonal antibodies that recognized tyrosine kinases in oncogene-transformed epithelial cells (Kinch et al., 1998). We developed and applied new methodologies to generate monoclonal antibodies tyrosine kinases in cancer cells.

Our antibody study yielded a large number of different antigens, but we focussed upon one particular kinase, recognized by D7 antibodies. This decision was based upon evidence that the D7 antigen was differentially expressed in non-transformed and malignant breast cancer cells. Moreover, we found that the phosphotyrosine content and subcellular localization of the D7 antigen differed when comparing non-transformed and tumor-derived cells (See Appended Manuscript) (Zantek et al., 1999). However, the identity and nature of enzymatic activity (tyrosine or serine/threonine activity) of the D7 kinase was unknown.

The first goal of our DoD-funded project sought to identify the D7 antigen. To accomplish this, we synthesized a cDNA expression library (in lambda-GT11 bacteriophage) from breast cancer cells that overexpressed the D7 antigen. We then probed this library with D7 antibodies and isolated three independent phage clones. DNA sequencing revealed that each phage encoded for the EphA2 receptor tyrosine kinase. We then confirmed the specificity of D7 antibodies for EphA2 using known EphA2 antibodies.

At the time that we identified the D7 antigen, rather little was known of EphA2. EphA2 is a 130 kDa transmembrane receptor tyrosine kinase of the Eph family of receptor tyrosine (Lindberg and Hunter, 1990) (Figure 1). Eph kinases are unique in that they bind ligands that are attached to the cell surface and this feature will be important below for understanding the functional alterations of EphA2 in breast cancer (Flanagan et al., 1997; Gale and Yancopoulos, 1997; van der Geer et al., 1994). Most Eph kinases are expressed only in the developing nervous system. By contrast, EphA2 is the only Eph family member that is expressed predominantly in adult epithelial cells (indeed, its original name was the Epithelial Cell Kinase or ECK) (Lindberg and Hunter, 1990). This expression pattern, along with a lack of available monoclonal antibodies, had severely limited study of EphA2.

EphA2 and E-cadherin (Objectives 1C and 2)

Immunolocalization studies of the D7 antigen in non-transformed and malignant breast epithelial cells revealed dramatic differences in EphA2 subcellular distribution. In non-transformed cells, EphA2 co-distributed with E-cadherin into cell-cell contacts. In contrast, EphA2 in malignant cells was either diffusely distributed or found within membrane ruffles at the leading edge of cell invasion. Notably, the differential subcellular localization of EphA2 was found to relate to E-cadherin expression and the phosphotyrosine content of EphA2. This relationship was intriguing since E-cadherin is a potent tumor suppressor in breast cancer and we asked whether E-cadherin regulates EphA2 function.

As detailed in the Appended Manuscript (Zantek et al., 1999), we have demonstrated that E-cadherin regulates EphA2 subcellular localization and function. Specifically, we found that E-cadherin stabilizes cell-cell contacts and thereby allows EphA2 to interact with its ligands, which are anchored to the cell membrane. Consequently, the EphA2 in non-transformed cells is tyrosine phosphorylated whereas the EphA2 in malignant cells is not tyrosine phosphorylated. Interestingly, we also have demonstrated that the EphA2 in non-transformed and malignant cells has comparable enzymatic activity and that EphA2 enzymatic activity is independent of its phosphotyrosine content. Rather than directing the magnitude of enzymatic activity, our results suggest that ligand-mediated tyrosine phosphorylation of EphA2 controls substrate specificity or links EphA2 to downstream signaling pathways (via interactions with proteins that contain SH2 domains). This regulation has important biological implications for breast cancer since we also demonstrated that ligand-mediated activation of EphA2 blocks the growth and invasiveness of breast cancer cells.

EphA2 Expression in Breast Cancer (Objective 3A)

As demonstrated in the Appended Manuscript (Zelinski et al.), our studies have found differential expression of EphA2 in benign and malignant breast epithelial cells. Western blot analysis reveals that the highest levels of EphA2 are

consistently found in breast cancer cell models that are metastatic *in vivo* (i.e., xenograft analyses). Moreover, we have begun to measure EphA2 levels in clinical specimens of breast cancer. Immunohistochemical analyses of archival, formalin-fixed paraffin-embedded specimens of benign and malignant breast tissues confirm elevated EphA2 levels in breast cancer specimens. As a follow-up study, we are currently preparing to increase the size of the study to determine if EphA2 levels relate to disease grade or outcome.

EphA2 Is a Powerful Oncoprotein (Objective 3B)

Since the highest levels of EphA2 consistently related to a metastatic phenotype, we have begun to overexpress EphA2 in cells with little or no endogenous EphA2. As detailed in the Appended Manuscript (Zantek et al., 1999), we overexpressed EphA2 cDNAs in non-transformed MCF-10A cells and showed that this is sufficient to induce malignant transformation as defined using standard *in vitro* and *in vivo* analyses. These results are exciting since no other oncogene (e.g., Ras, HER2, TC21, Rac, Rho) has been able to confer tumorigenic or metastatic potential upon MCF-10A cells (Clark et al., 1996; Miller et al., 1993; Zelinski et al., 2001a). Thus, these results suggest that EphA2 overexpression is particularly relevant to breast cancer. Ongoing studies in our laboratory are dissecting the mechanisms by which EphA2 overexpression can induce malignant transformation of MCF-10A cells.

EphA2 overexpression alters the adhesive interactions of MCF-10A cells. In particular, EphA2 destabilizes cell-cell attachments while increasing cell interactions with extracellular matrix (ECM proteins). We have shown that the change in cellular adhesions results from the fact that EphA2 overexpression induces production of the ECM protein fibronectin. Moreover, we have shown that epithelial cell binding to fibronectin is necessary and sufficient for the malignant character of aggressive breast cancer cells (see appended manuscript, Zelinski and Kinch for details). The decrease in cell-cell contacts is intriguing since this indicates that EphA2 overexpression destabilizes its interactions with its cell-anchored ligands and thus alters its function. However, we have found that the EphA2 in transformed MCF-10A cells remains responsive to stimulation by monoclonal antibodies or soluble forms of ligand (Zantek et al., 1999; Zelinski et al., 2001b). These reagents activate EphA2 (defined as increased phosphotyrosine content) and can thereby block the growth and invasiveness of breast cancer cells (e.g., MDA-MB-231, EphA2-transformed MCF-10A cells). These results formed the basis of our follow-up studies, recently approved for funding by the USA-MRMC, which will test EphA2 as a potential target for monoclonal antibody-based targeting of metastatic breast cancer cells.

KEY ACCOMPLISHMENTS:

- Identification of the D7 antigen as the EphA2 receptor tyrosine kinase (Objective 1A and 1B)
- Demonstration that E-cadherin regulates the function of EphA2 in benign mammary epithelial cells (Objective 1C)
- Demonstration of differential subcellular localization and function of EphA2 in benign and malignant mammary epithelial cells (Objective 2)
- Demonstration that EphA2 is grossly overexpressed in malignant breast cancer cell lines and tissues (Objective 3A)
- Demonstration that EphA2 overexpression is sufficient to induce malignant transformation (Objective 3B)
- Demonstration that EphA2 overexpression alters cell adhesions and promotes malignant cell behavior by inducing fibronectin (Objective 3B).

REPORTABLE OUTCOMES:***Manuscripts:***

Zantek, N.D., Azimi, M., Fedor-Chaiken, M., Wang, B., Brackenbury, R., and Kinch, M.S. (1999). E-cadherin regulates the function of the EphA2 receptor tyrosine kinase. *Cell Growth Differentiation* 10, 629-638.

Zelinski, D.P., Zantek, N.D., Stewart, J.C., Irizarry, AR, Kinch, M.S. 2001. EphA2 overexpression causes tumorigenesis of mammary epithelial cells. *Cancer Res.* 61, 2301-2306.

Zelinski, D.P., and Kinch, M.S. (2001). ECM Attachments Decrease Epithelial Cell-Cell Adhesions. *In preparation.*

Presentations:

Invited Speaker, EphA2 Overexpression in Breast Cancer. American Society for Cell Biology National Conference, Washington, DC, December 1998.

Presentation, Aberrant expression and function of the EphA2 tyrosine kinase in breast cancer. American Association for Cancer Research National Conference, San Francisco, CA, April, 2000.

Patents:

Kinch, M.S., 1999. Antibody treatment of metastatic disease. U.S. Provisional Patent Application No 60/149258.

Kinch, M.S. and Zantek, N., 1999. Antibodies as cancer diagnostic. U.S. Provisional Patent Application No 60/149259.

Degrees Supported:

Zantek, N.D. 1999. Ph.D., Purdue University.

Zelinski, D.P. 2001. Ph.D. Purdue University.

Cell Line Development:

EphA2-transformed MCF-10A cells

Funding Applications as a Result of this Award:

National Institutes of Health (R21). EphA2: A marker of breast cancer progression, P.I., Michael S. Kinch. 4-1-00 to 3-31-02

National Institutes of Health (U01). Targeted intervention against EphA2 on cancer cells., P.I., Michael S. Kinch. 5-1-01 to 4-30-05

US Army Medical Research and Materiel Command – Congressionally-Directed Medical Research Program in Breast Cancer (Idea Award). Antibody targeting of the EphA2 kinase on breast cancer cells., P.I., Michael S. Kinch. 4-1-01 to 3-31-04

US Army Medical Research and Materiel Command – Congressionally-Directed Medical Research Program in Breast Cancer (Career Development Award). Antibody targeting of the EphA2 kinase on breast cancer cells., P.I., Michael S. Kinch. 4-1-01 to 3-31-04

US Army Medical Research and Materiel Command – Congressionally-Directed Medical Research Program in Prostate Cancer (Idea Award). Antibody targeting of the EphA2 kinase on prostate cancer metastases. P.I., Michael S. Kinch. 11-1-01 to 10-31-03.

US Army Medical Research and Materiel Command – Congressionally-Directed Medical Research Program in Breast Cancer (Concept Award). Differential substrate profile of the EphA2 tyrosine kinase in non-transformed and malignant breast epithelia. P.I., Michael S. Kinch. 9-1-00 to 8-31-01.

US Army Medical Research and Materiel Command – Congressionally-Directed Medical Research Program in Breast Cancer (Concept Award). Regulation of the EphA2 by the HCPTP tyrosine phosphatase. P.I., Michael S. Kinch. 2-1-01 to 1-31-02.

Purdue Cancer Center. The EphA2 tyrosine kinase in bladder cancer. P.I. M.S. Kinch (Co-PI: D. Knapp and L. Cheng). 1-1-01 to 12-31-01.

CONCLUSIONS:

Our funded proposal allowed us to identify a receptor tyrosine kinase, EphA2, which is overexpressed and functionally altered in breast cancer cells. EphA2 overexpression identifies an aggressive subset of breast tumor and we find that EphA2 directly contributes to breast cancer metastasis. EphA2 functions as a powerful oncoprotein when overexpressed in human mammary epithelial cells. Importantly, the aggressive behaviors of EphA2 overexpressing breast cancer cells

can be reversed by treating tumor-derived or EphA2-transformed cells with specific antibodies or artificial forms of ligand.

Our studies have potentially important implications for breast cancer diagnosis and treatment. EphA2 overexpression appears to apply to a large number of breast cancer patients and importantly, identifies cells with metastatic potential. Moreover, our studies suggest that unique properties of EphA2 (*e.g.*, aberrant ligand binding) may render malignant cells susceptible to future therapeutic strategies that could redirect EphA2 so that it blocks the growth or invasiveness of malignant breast cancer cells.

REFERENCES:

- Cance, W.G. and Liu, E.T. (1995). Protein kinases in human breast cancer. *Breast Cancer Res Treat* 35, 105-114.
- Clark, G.J., Kinch, M.S., Gilmer, T.M., Burrridge, K., and Der, C.J. (1996). Overexpression of the Ras-related TC21/R-Ras2 protein may contribute to the development of human breast cancers. *Oncogene* 12, 169-176.
- Flanagan, J.G., Gale, N.W., Hunter, T., Pasquale, E.B., and Tessier-Lavigne, M. (1997). Unified nomenclature for Eph family receptors and their ligands, the ephrins. *Cell* 90, 403-404.
- Gale, N.W. and Yancopoulos, G.D. (1997). Ephrins and their receptors: a repulsive topic? *Cell & Tissue Res* 290, 227-241.
- Kinch, M.S. and Burrridge, K. (1995a). Altered adhesions in ras-transformed breast epithelial cells. *Biochem Soc Trans* 23, 446-450.
- Kinch, M.S., Clark, G.J., Der, C.J., and Burrridge, K. (1995b). Tyrosine phosphorylation regulates the adhesions of ras-transformed breast epithelia. *J Cell Biol* 130, 461-471.
- Kinch, M.S., Kilpatrick, K., and Zhong, C. (1998). Identification of tyrosine phosphorylated adhesion proteins in human cancer cells. *Hybridoma* 17, 227-235.
- Lindberg, R.A. and Hunter, T. (1990). cDNA cloning and characterization of eck, an epithelial cell receptor protein-tyrosine kinase in the eph/elk family of protein kinases. *Mol Cell Biol* 10, 6316-6324.
- Miller, F.R., Soule, H.D., Tait, L., Pauley, R.J., Wolman, S.R., Dawson, P.J., and Heppner, G.H. (1993). Xenograft model of progressive human proliferative breast disease. *J National Cancer Institute* 85, 1725-1732.
- van der Geer, P., Hunter, A.J., and Lindberg, R.A. (1994). Receptor protein-tyrosine kinases and their signal transduction pathways. *Annu Rev Cell Biol* 10, 251-337.

- Zantek, N.D., Azimi, M., Fedor-Chaiken, M., Wang, B., Brackenbury, R., and Kinch, M.S. (1999). E-cadherin regulates the function of the EphA2 receptor tyrosine kinase. *Cell Growth & Differentiation* *10*, 629-638.
- Zelinski, D.P., Zantek, N.D., Stewart, J., Irizarry, A., and Kinch, M.S. (2001a). EphA2 overexpression causes tumorigenesis of mammary epithelial cells. *Cancer Res* *61*, 2301-2306.

APPENDICES:

1. Revised Statement of Work (Revision requested by USA-MRMC, August, 1999).
2. Zantek, N.D., Azimi, M., Fedor-Chaiken, M., Wang, B., Brackenbury, R., and Kinch, M.S. (1999). E-cadherin regulates the function of the EphA2 receptor tyrosine kinase. *Cell Growth Differentiation* 10, 629-638.
3. Zelinski, D.P., Zantek, N.D., Stewart, J.C., Irizarry, AR, Kinch, M.S. 2001. EphA2 overexpression causes tumorigenesis of mammary epithelial cells. *Cancer Res.* 61, 2301-2306.
4. Zelinski, D.P., and Kinch, M.S. (2001). ECM Attachments Decrease Epithelial Cell-Cell Adhesions. *In preparation*.

Part II.F. Statement of Work

Characterization of an Adhesion-Associated Tumor Suppressor in Breast Cancer

Objective 1A: Identify the D7 antigen (months 1-6)

- Task 1. Affinity purification and microsequencing (months 1-3)
- Task 2. cDNA isolation and sequencing (months 1-6)

Objective 1B: Determine the nature of D7's enzymatic activity (months 1-8)

- Task 1. Assess for possible interacting proteins (months 1-3)
 - Concomitant with affinity purification (Objective 1A, Task 1)
- Task 2. Determine whether D7 has serine/threonine or tyrosine kinase activity (months 6-8)

Objective 1C: Determine whether D7 is present in E-cadherin adhesion complexes (months 4-7)

- Task 1. Confocal microscopy for E-cadherin and D7 (month 4)
- Task 2. Measure interactions using protein chemistry (months 4-7)

Objective 2A: Measure differences in D7 enzymatic activity between normal and transformed breast epithelia (months 5-10)

- Task 1. Measure tyrosine phosphorylation of D7 (month 5)
 - Concomitant with Objective 1C, Task 2
- Task 2. Compare kinase activity *in vitro* (months 6-10)

Objective 2B: Compare D7 enzymatic activity in normal and transformed breast epithelia (months 6-12)

- Task 1. Measure D7 activity during E-cadherin signaling in non-transformed cells (months 6-10)
 - Concomitant with Objective 2A, Task 2
- Task 2. Measure D7 activity during E-cadherin signaling in transformed cells (months 10-12)

Objective 3A. Begin to determine why D7 is lost in invasive cancers (months 13-18)

- Task 1. Analyze D7 in non-transformed and breast cancer cells by Northern blotting (months 13-16)
- Task 2. Analyze D7 in non-transformed and breast cancer cells by RT-PCR (months 13-16)
- Task 3. Measure D7 protein stability using pulse-label (months 17-18)

Objective 3B. Determine whether D7 suppresses a metastatic phenotype (months 17-36)

- Task 1. Construct expression vectors (months 17-19)
- Task 2. Transfect (infect) and select ZR-75-1 with D7 (months 20-24)
- Task 3. Analyze phenotype (immunofluorescence, cell growth, migration) (months 25-30)
- Task 4. Transfect (infect) and select MCF-10-ST cell with E-cadherin (months 29-32)
- Task 5. Analyze phenotype (immunofluorescence, cell growth, migration) (months 33-36)

E-Cadherin Regulates the Function of the EphA2 Receptor Tyrosine Kinase¹

Nicole Dodge Zantek, Minoudokht Azimi,
Mary Fedor-Chaiken, Bingcheng Wang,
Robert Brackenbury, and Michael S. Kinch²

Department of Basic Medical Sciences and Purdue Cancer Center, Purdue University, West Lafayette, Indiana 47907 [N. D. Z., M. A., M. S. K.]; Department of Cell Biology, Neurobiology and Anatomy, University of Cincinnati, Cincinnati, Ohio 45267 [M-F. C.]; and Department of Medicine, Rammelkamp Center for Research, MetroHealth Campus, Case Western Reserve University, Cleveland, Ohio 44109 [B. W.]

Abstract

EphA2 is a member of the Eph family of receptor tyrosine kinases, which are increasingly understood to play critical roles in disease and development. We report here the regulation of EphA2 by E-cadherin. In nonneoplastic epithelia, EphA2 was tyrosine-phosphorylated and localized to sites of cell-cell contact. These properties required the proper expression and functioning of E-cadherin. In breast cancer cells that lack E-cadherin, the phosphotyrosine content of EphA2 was decreased, and EphA2 was redistributed into membrane ruffles. Expression of E-cadherin in metastatic cells restored a more normal pattern of EphA2 phosphorylation and localization. Activation of EphA2, either by E-cadherin expression or antibody-mediated aggregation, decreased cell-extracellular matrix adhesion and cell growth. Altogether, this demonstrates that EphA2 function is dependent on E-cadherin and suggests that loss of E-cadherin function may alter neoplastic cell growth and adhesion via effects on EphA2.

Introduction

Protein tyrosine phosphorylation generates the powerful signals necessary for the growth, migration, and invasion of normal and malignant cells (1). A number of tyrosine kinases have been linked with cancer progression (2), and increased tyrosine kinase activity is an accurate marker of cancer progression (3, 4). EphA2 (epithelial cell kinase) is a M_r 130,000 member of the Eph family of receptor tyrosine kinases (5), which interact with cell-bound ligands known as ephrins

(1, 6, 7). Whereas EphA2 and most other Eph kinases are expressed and well studied in the developing embryo (8), in the adult, EphA2 is expressed predominantly in epithelial tissues (5). The function of EphA2 is not known, but it has been suggested to regulate proliferation, differentiation, and barrier function of colonic epithelium (9); stimulate angiogenesis (10); and regulate neuron survival (11). Little is known of EphA2's role in cancer, although recent studies demonstrate EphA2 expression in human melanomas (12), colon cancers (9), and some oncogene-induced murine mammary tumors (13).

There is much interest in how tyrosine kinases like EphA2 regulate cell growth and differentiation. One often unappreciated mechanistic hint is the observation that substrates of tyrosine kinases are found almost exclusively within sites of cellular adhesion (14). In epithelial cells, for example, tyrosine-phosphorylated proteins are predominantly located in E-cadherin-associated adherens junctions (14, 15). E-cadherin mediates calcium-dependent cell-cell adhesions through homophilic interactions with E-cadherin on apposing cells (16, 17). In cancer cells, E-cadherin function is frequently destabilized, either by loss of E-cadherin expression (18) or by disruption of linkages between E-cadherin and the actin cytoskeleton (19–23). Restoration of E-cadherin function, either by E-cadherin transfection (24, 25) or treatment with pharmacological reagents (21), is sufficient to block cancer cell growth and induce epithelial differentiation. However, the mechanisms by which E-cadherin imparts these tumor suppressor functions are largely unknown. Whereas E-cadherin-mediated stabilization of cell-cell contacts undoubtedly is involved, there is recent evidence that E-cadherin also generates intracellular signals that could contribute to tumor suppression (15, 26, 27).

Previous studies by our laboratory have linked E-cadherin with signaling by tyrosine phosphorylation. E-cadherin aggregation into assembling adherens junctions initiates a signaling cascade involving tyrosine phosphorylation that may contribute to E-cadherin's tumor suppressor function (28). In addition, we have demonstrated that transformed epithelial cells have elevated levels of tyrosine phosphorylation that destabilize E-cadherin function (21). To identify tyrosine kinases and their substrates in breast cancer, we recently generated monoclonal antibodies that are specific for tyrosine-phosphorylated proteins in Ras-transformed breast epithelial cells (15). Using these antibodies, we identified the EphA2 tyrosine kinase as a protein that is tyrosine-phosphorylated upon E-cadherin-mediated adhesion. We also show that E-cadherin regulates the functioning of EphA2.

Results

Regulation of EphA2 Expression in Breast Cancer Cells. We measured EphA2 expression levels in breast epithelial cell lines derived from nonneoplastic epithelia (e.g., MCF-

Received 4/13/99; revised 7/2/99; accepted 7/28/99.

The costs of publication of this article were defrayed in part by the payment of page charges. This article must therefore be hereby marked advertisement in accordance with 18 U.S.C. Section 1734 solely to indicate this fact.

¹ Supported by American Cancer Society Grant RPG CSM-86522 (to M. S. K.), NIH Grant AR44713 (to R. B. and M. S. K.), and U. S. Army Medical Research and Material Command Grants 17-98-1-8146 (to M. S. K.) and 17-98-1-8292 (to R. B.). N. D. Z. is a Howard Hughes Medical Institute Predoctoral Fellow.

² To whom requests for reprints should be addressed, at Department of Basic Medical Sciences, Purdue University, West Lafayette, IN 47907-1246. E-mail: msk@vet.purdue.edu.

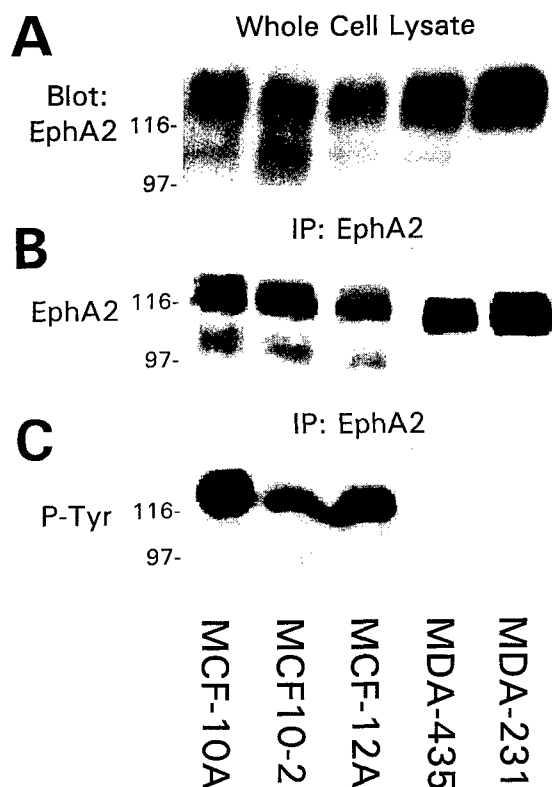


Fig. 1. Decreased EphA2 phosphorylation in metastases. EphA2 from whole cell lysates (**A**) or immunoprecipitated from monolayers of nonneoplastic (MCF-10A, MCF10-2, and MCF-12A) and metastatic (MDA-MB-231 and MDA-MB-435) breast cancer cell lines (**B**) was resolved by SDS-PAGE and Western blot analysis performed with EphA2 antibodies. **C**, the blot from **B** was stripped and reprobed with phosphotyrosine-specific (PY20) antibodies. Note the absence of tyrosine-phosphorylated EphA2 in metastatic breast cancer cells.

10A, MCF-12A, and MCF10-2; Refs. 29 and 30) and metastatic breast cancer (e.g., MDA-MB-231 and MDA-MB-435; Refs. 31 and 32). EphA2 was found to be expressed in nontransformed mammary epithelial and metastatic breast cancer cell lines tested (Fig. 1A and data not shown), with 2–5-fold more EphA2 in neoplastic cells, as determined by Western blot analysis using multiple EphA2 antibodies and by Northern blot analysis (data not shown).

Despite its overexpression, EphA2 in metastatic cells displayed a much-reduced phosphotyrosine content. For these studies, EphA2 was immunoprecipitated from confluent monolayers of either nonneoplastic or metastatic cells and Western blot analysis performed with phosphotyrosine specific antibodies. This revealed prominent phosphorylation of EphA2 in nonneoplastic cells, whereas the EphA2 from metastatic cells was not tyrosine-phosphorylated (Fig. 1C). The decreased phosphotyrosine content was confirmed using different EphA2 antibodies (D7, B2D6, and rabbit polyclonal antibodies) for immunoprecipitation and with multiple phosphotyrosine antibodies (PY20, 4G10, and rabbit polyclonal antibodies) for Western blot analysis (data not shown). Decreased EphA2 phosphorylation was also observed in other metastatic breast cancer cell lines as well as invasive tumor

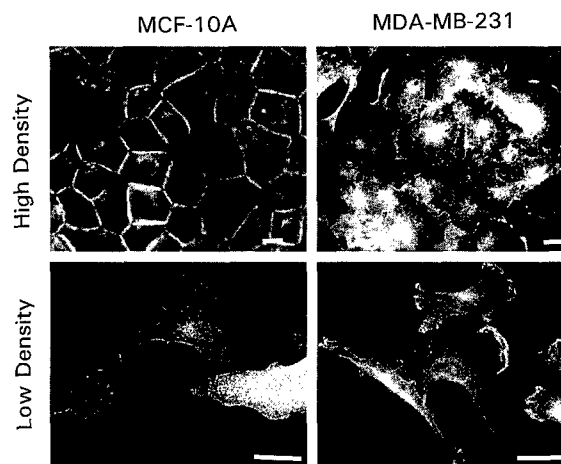


Fig. 2. Altered EphA2 localization in metastatic cancer cells. The subcellular distribution of EphA2 in nontransformed mammary epithelial cells (MCF-10A) and metastatic breast cancer cells (MDA-MB-231) was assessed by immunostaining with EphA2-specific antibodies. The cells were plated at either high (*top*) or low (*bottom*) cell density to emphasize the localization of EphA2 within cell-cell contacts or membrane ruffles of nontransformed or invasive cells, respectively. Scale bars, 10 μ m.

cell lines derived from colon, pancreatic, ovarian, and lung cancers (data not shown).

Further comparison of EphA2 in nonneoplastic and metastatic cells revealed other changes in EphA2 distribution and function. Immunofluorescence staining with EphA2-specific antibodies revealed that EphA2 in nonneoplastic cells was mostly found within sites of cell-cell contact (Fig. 2), with little staining of membrane that was not in contact with neighboring cells. In contrast, EphA2 in metastatic cells was absent from sites of cell-cell contacts. Instead, the EphA2 in these cells was either diffusely distributed or enriched within membrane ruffles at the leading edge of migrating cells. The enrichment within membrane ruffles was confirmed by colocalization of EphA2 with f-actin (data not shown). This localization within membrane ruffles was not observed in nontransformed epithelia, even at low cell density. These differences in subcellular distribution were confirmed using three different EphA2-specific antibodies (D7, B2D6, and rabbit polyclonal antibodies). The correlation between EphA2 localization and phosphotyrosine content forms the basis for much of the remainder of this study.

EphA2 Enzymatic Activity in Metastatic Cells. Tyrosine phosphorylation of a kinase often regulates enzymatic activity. To test the effect of differences in EphA2 phosphorylation on kinase activity, we measured EphA2 autophosphorylation by using *in vitro* kinase assays with immunoprecipitated material (Fig. 3). Despite the low phosphotyrosine content of EphA2 in metastatic cells, this EphA2 demonstrated enzymatic activity that was comparable with or higher than the activity of EphA2 isolated from nonneoplastic cells. This activity was unaffected by the basal phosphotyrosine content of EphA2 because unlabeled phosphate was rapidly exchanged with labeled phosphate during the autophosphorylation assays as described previously (33, 34). KOH treatment of the membranes prior to autoradiography did not

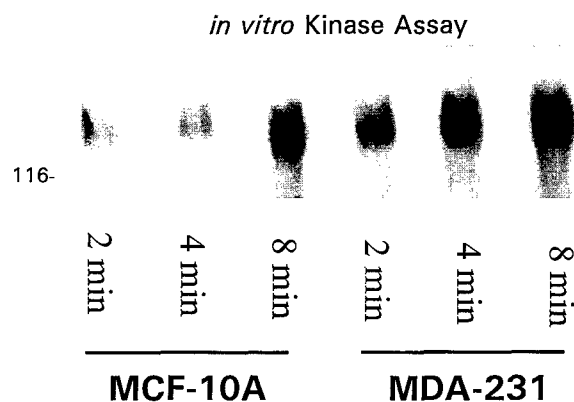


Fig. 3. EphA2 enzymatic activity. The enzymatic activity of EphA2 was measured using an *in vitro* autophosphorylation assay. At the times shown, the *in vitro* reaction was terminated and resolved by SDS-PAGE. The blot shown was treated with KOH to hydrolyze phosphoserine and phosphothreonine prior to autoradiography. After several half-lives, Western blot analysis was performed with EphA2 antibodies to confirm equal sample loading (data not shown).

significantly reduce the level of phosphorylation, indicating that the observed enzymatic activity represented mostly phosphorylation on tyrosine residues. It is also notable that the phosphotyrosine content of EphA2 (Fig. 1B) was not predictive of its enzymatic activity (Fig. 3).

Receptor Aggregation Induces EphA2 Tyrosine Phosphorylation in Metastatic Cells. EphA2 in neoplastic cells retained the capacity to become activated. For example, EphA2 tyrosine phosphorylation was induced by aggregation of EphA2 with a soluble form of ephrin-A (B61-IgG, a chimera of the EphrinA1 extracellular domain fused to immunoglobulin heavy chain; also known as a "ligand-body"; Refs. 10 and 35; Fig. 4C). In contrast, a control chimera (Ctrl-IgG) did not alter EphA2 phosphorylation. Clustering EphA2 at the cell surface with specific antibodies (EK166B or B2D6) also induced levels of EphA2 activation that were comparable with that nonneoplastic cells (Fig. 4A). Receptor aggregation, not simply antibody binding, was necessary for EphA2 phosphorylation as incubation with anti-EphA2 (Fig. 4, 1°) alone did not increase EphA2 phosphorylation relative to matched controls. This effect was specific for EphA2 as neither secondary (Fig. 4, 2°) antibodies alone or clustering of isotype-matched control antibodies (which recognize an inaccessible cytoplasmic epitope on EphA2) did not induce tyrosine phosphorylation of EphA2 (data not shown). Analysis of the timing of EphA2 phosphorylation revealed EphA2 phosphorylation within 2 min after cross-linking, with optimal phosphorylation detected after 5 min (Fig. 4B).

E-Cadherin Regulates EphA2 in Nontransformed Epithelia. Tyrosine phosphorylation of EphA2 correlates with its localization within sites of cell-cell contact. Because Eph receptors become activated by ligands that are attached to the surface of neighboring cells (36), we reasoned that stable cell-cell adhesions might be necessary for EphA2 activation. Adhesions mediated by E-cadherin generate the most stable interactions between epithelial cells (16), and we noted that EphA2 was not phosphorylated and was absent from inter-

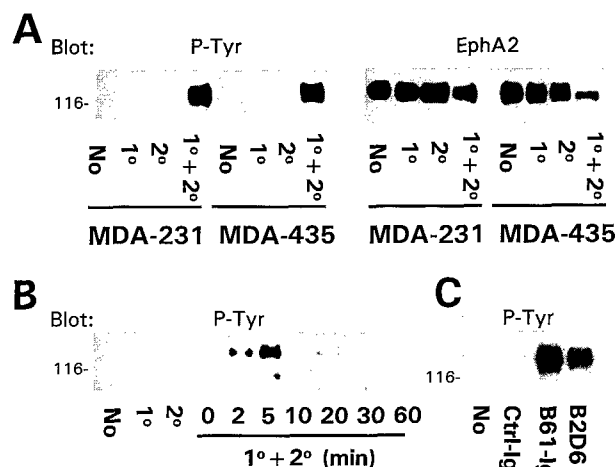


Fig. 4. Antibody-mediated aggregation induces EphA2 phosphorylation in metastatic cells. A, immunoprecipitated EphA2 was subjected to Western blot analysis with phosphotyrosine antibodies (PY20) following aggregation of cell surface EphA2 for 5 min at 37°C with specific primary and secondary antibodies (1°+2°). Note that simple engagement of anti-EphA2 (1°) or antimouse (2°) alone was insufficient to induce tyrosine phosphorylation above basal levels (No). The blot was then stripped and reprobed with EphA2 antibodies as a loading control. B, the time course of EphA2 phosphorylation was measured after cross-linking (1°+2°) EphA2 in MDA-MB-231 cells for 0–60 min by Western blot analysis of immunoprecipitated EphA2 with phosphotyrosine-specific antibodies (PY20). C, EphA2 was aggregated using a soluble ligand fusion protein (B61-IgG). A control fusion protein (Ctrl-IgG) served as a negative control, and B2D6-mediated aggregation served as a positive control for activation.

cellular contacts in cells lacking E-cadherin. These include metastatic cancer cells as well as nontransformed fibroblasts (e.g., NIH 3T3, REF-52, and C3H10T $\frac{1}{2}$) and myoepithelial cells (HBL-100; data not shown). We, therefore, tested whether E-cadherin might regulate EphA2 phosphorylation.

Because both EphA2 and E-cadherin are found at sites of cell-cell contact, we first examined whether the two proteins colocalize using two-color immunofluorescence microscopy. This revealed an overlapping distribution of EphA2 and E-cadherin along the lateral membranes of epithelial cells and, specifically, within sites of cell-cell contact (Fig. 5). Vertical sectioning by confocal microscopy confirmed colocalization of E-cadherin and EphA2 within sites of cell-cell contact (data not shown).

To test whether the colocalization of EphA2 and E-cadherin might indicate a functional link between the two proteins, we disrupted calcium-dependent E-cadherin-mediated adhesion by supplementing the cell culture medium with 4 mM EGTA, a calcium-chelating agent. EGTA treatment caused EphA2 dephosphorylation (Fig. 6A) and induced either a diffuse or membrane ruffle pattern of staining (Fig. 6C), which was reminiscent of EphA2 in metastatic cells. Subsequent restoration of normal levels of extracellular calcium restored normal levels of EphA2 phosphorylation and cell-cell localization within 5 min (Fig. 6, A and C).

Although results with EGTA-treated samples implicate cell-cell adhesion with the control of EphA2 phosphorylation

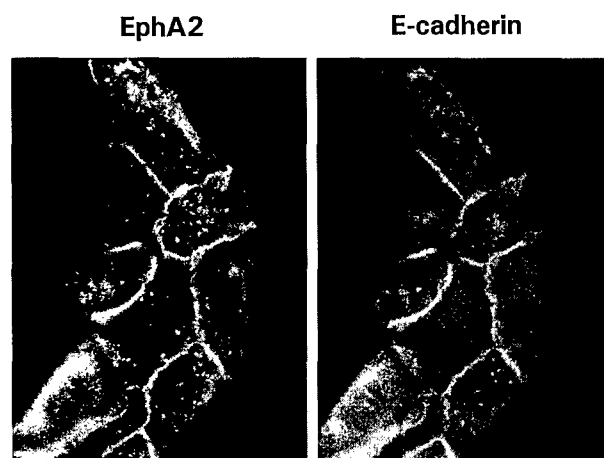


Fig. 5. Colocalization of EphA2 and E-cadherin. The subcellular distribution of EphA2 (left) and E-cadherin (right) was evaluated in MCF-10A cells using two-color immunofluorescence microscopy. Note the overlapping distribution of EphA2 and E-cadherin within sites of intercellular junctions.

and subcellular localization, we sought to determine whether E-cadherin contributed to this regulation. For this, we supplemented the cell culture medium with function-blocking E-cadherin antibodies and peptides (DECMA-1 antibodies or HAV peptides; Refs. 37 and 38). When inhibitors of E-cadherin function were added to the medium concomitant with the restoration of extracellular calcium, EphA2 did not become tyrosine-phosphorylated (Fig. 7A) and remained diffuse or present within membrane ruffles (Fig. 7C). In contrast, isotype-matched control antibodies and scrambled peptides did not prevent EphA2 phosphorylation or localization within intercellular junctions. Specific inhibition of E-cadherin with these inhibitors also blocked EphA2 phosphorylation and cell-cell localization upon treatment of confluent cell monolayers (data not shown), thus confirming that EphA2 phosphorylation and localization are sensitive to the functioning of E-cadherin.

EphA2 Is Responsive to E-Cadherin Expression in Metastatic Cells. To examine further the link between EphA2 and E-cadherin, we transfected MDA-MB-231 cells with E-cadherin (231-E-cad) and selected for levels of E-cadherin expression that were equivalent to MCF-10A cells. As controls, we transfected cells with empty vector (231-neo). EphA2 in 231-neo was not phosphorylated and was enriched within membrane ruffles (Fig. 8). In contrast, the EphA2 in 231-E-cad redistributed into sites of cell-cell contacts and had levels of phosphotyrosine that were comparable with that of MCF-10A cells (Fig. 9A). These changes in EphA2 phosphorylation and localization increased with cell density (data not shown), consistent with an idea that E-cadherin function regulates EphA2 phosphorylation and localization.

EphA2 Regulates Cell Adhesion and Proliferation. Microscopic analysis revealed that E-cadherin expression altered the adhesive profile of MDA-MB-231 cells (Fig. 8). Whereas parental and 231-neo cells were mesenchymal in appearance and readily grew atop one another, the E-cadherin-transfected cells had more prominent cell-cell adhe-

sions and grew as single-cell monolayers. Analysis of cell-ECM³ attachments by staining with paxillin-specific antibodies revealed numerous focal adhesions in control MDA-MB-231 cells, whereas 231-E-cad cells had fewer focal adhesions. The decrease in focal adhesions was most prominent in 231-E-cad cells within colonies (Fig. 8, bottom right), whereas individual cells had focal adhesions that were comparable with controls (data not shown).

EphA2 activation contributes to the decreased cell-ECM adhesion. To activate EphA2 in MDA-MB-231 cells, we aggregated EphA2 at the cell surface with specific antibodies (as described above) and found that this caused a rapid loss of focal adhesions within 5 min. This was confirmed by paxillin staining (Fig. 10) and by interference reflection microscopy (data not shown). Similar results were obtained in other neoplastic cell lines (data not shown). In contrast, treatment with either primary or secondary antibodies alone did not alter focal adhesions.

Focal adhesions are sites of intracellular signaling that promote cell growth (39, 40). Because EphA2 activation blocks focal adhesions, we questioned whether EphA2 activation would impact cell growth. To test this, we activated EphA2 with specific antibodies or B61-IgG ligand-bodies (as described above). Concomitant with receptor cross-linking, we included BrdUrd in the culture medium and measured DNA synthesis over the following 4 h. As shown in Table 1, EphA2 activation decreased the proliferation in MDA-MB-231 cells (31% reduction; $P < 0.001$), whereas control conditions (primary or secondary antibodies alone and isotype controls) did not change cell growth. The short duration of EphA2 signaling that is induced by antibody aggregation (Fig. 4B) likely underestimates EphA2's growth-inhibitory potential. A similar decrease in cell growth was obtained following EphA2 activation in other cell types, including MDA-MB-435 cells (22% reduction; $P < 0.0005$) and MCF-10A cells (16% reduction; $P < 0.01$). For experiments with MCF-10A, we plated cells at low cell density and scored individual cells (to preclude cell-cell contacts that might otherwise activate EphA2).

Discussion

The major findings of this study are that the localization and phosphorylation of EphA2 in mammary epithelial cells are dependent on E-cadherin-mediated adhesion and that loss of E-cadherin in metastatic tumor cells causes alterations in EphA2 localization and phosphorylation. In addition, we found that experimental induction of EphA2 phosphorylation decreases cell-ECM attachment at focal adhesions and negatively regulates the proliferation of metastatic cells.

Decreased EphA2 Phosphorylation in Metastatic Cells.

We originally identified EphA2 using antibodies that recognize tyrosine-phosphorylated proteins in Ras-transformed MCF-10A-neoT cells (15). MCF-10A-neoT cells express E-cadherin (21) and, consequently, EphA2 is tyrosine-phosphorylated (data not shown). Notably, EphA2 was tyrosine-

³ The abbreviations used are: ECM, extracellular matrix; BrdUrd, bromodeoxyuridine.

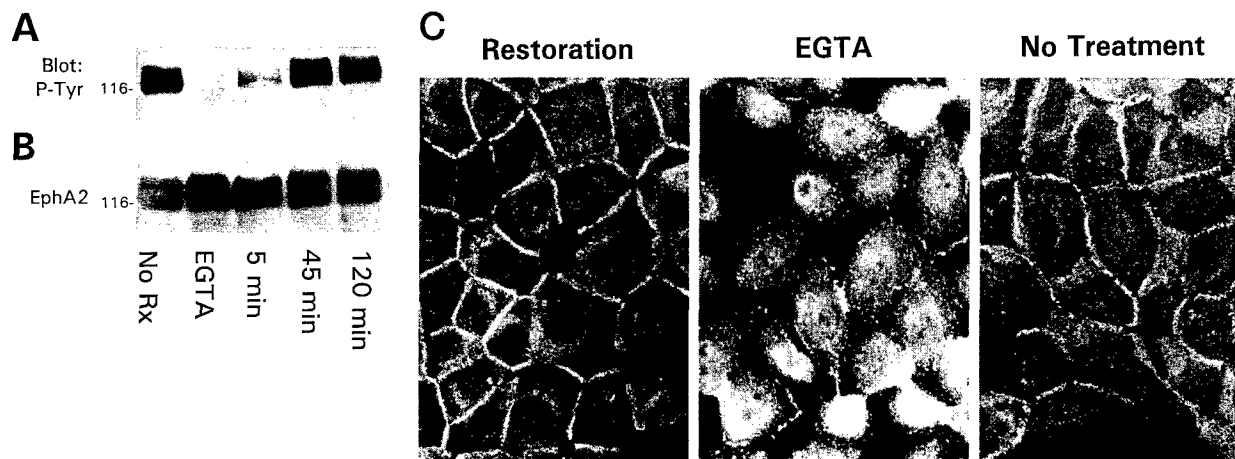


Fig. 6. EphA2 phosphorylation and localization require stable E-cadherin adhesions. Stable cell-cell contacts in monolayers of MCF-10A cells were disrupted by the addition of EGTA (4 mM, 30 min, 37°C) to the culture medium. After removal of the EGTA, normal growth medium was returned for 0–120 min. **A**, EphA2 was immunoprecipitated and Western blot analysis performed with phosphotyrosine-specific (PY20) antibodies. **B**, the blot from **A** was stripped and reprobed with EphA2 antibodies as a loading control. **C**, staining with EphA2-specific antibodies assessed changes in the subcellular distribution of EphA2 before and after restoration of cell-cell adhesions.

phosphorylated in nonneoplastic mammary epithelial cell lines but not in metastatic cell lines. In this respect, EphA2 differs from many other tyrosine kinases (e.g., cErbB2, epidermal growth factor receptor, platelet-derived growth factor receptor, and Src), the phosphorylation of which increases in cancer cells (2, 41, 42). For these kinases, phosphorylation elevates tyrosine kinase activity, triggering signal transduction cascades that promote cell proliferation.

The phosphotyrosine content of EphA2 does not relate to its intrinsic enzymatic activity in mammary epithelial cells. *In vitro* assays revealed that, despite its low phosphotyrosine content, the enzymatic activity of EphA2 in metastatic cells is comparable with or increased over the activity of phosphorylated EphA2 in nonneoplastic epithelial cells. This is consistent with evidence that the phosphorylation of EphB2 also has little effect on its kinase activity (43). Our results suggest that, rather than controlling enzymatic activity, the phosphotyrosine content of EphA2 might influence the choice or availability of substrates and interacting proteins. In addition, changes in the phosphotyrosine content of EphA2 might provide signals that are independent of EphA2 enzymatic activity, which is supported by recent reports that other Eph kinases (VAB-1 and EphB2) have kinase-independent functions (44, 45). This suggests that protein interactions, localization, phosphotyrosine content, and enzymatic activity all contribute to Eph receptor function.

There are several possible explanations for the loss of EphA2 phosphorylation in metastatic cells. The primary sites of receptor autophosphorylation are not mutated because the sites that become autophosphorylated *in vitro* are the same in nontransformed and neoplastic cells.⁴ Consistent with this, EphA2 tyrosine phosphorylation was restored by cross-linking EphA2 with antibodies or by transfection with E-cadherin. Another possible cause for decreased EphA2

phosphorylation could be loss of EphA2 ligands (ephrin-A class molecules). However, our ability to restore EphA2 phosphorylation in E-cadherin-transfected cells appears to exclude this possibility. A third possibility is that the phosphotyrosine content of EphA2 is repressed by an associated tyrosine-phosphatase. Consistent with this, treatment of neoplastic cells with tyrosine-phosphatase inhibitors restores normal levels of EphA2 tyrosine phosphorylation.⁵ However, the identities of the phosphatases responsible for this are presently unknown.

Regulation of EphA2 Activation by E-Cadherin. We focused on the possibility that decreased stability of cell-cell contacts inhibits tyrosine phosphorylation of EphA2 in metastatic cells. Both Eph family receptor tyrosine kinases and their ephrin ligands are bound to the cell surface (1, 6, 7), so cells must be in close contact to facilitate Eph-ephrin interactions. Little is known, however, about the nature of these contacts and their precise effects on Eph-ephrin interactions.

Because many breast tumors lack E-cadherin and have unstable cell-cell junctions (18, 46), we investigated how expression of E-cadherin affects EphA2 phosphorylation in mammary epithelial cells. We found inhibition of E-cadherin function either by removal of Ca^{2+} or with function-blocking antibodies or peptides reduced EphA2 phosphorylation and caused EphA2 to redistribute into membrane ruffles. Conversely, expression of E-cadherin in MDA-MB-231 cells restored EphA2 phosphorylation and localization to sites of cell-cell contact. The simplest explanation for these results is that E-cadherin stabilizes cell-cell contacts and, thereby, facilitates interactions between EphA2 and its ligands.

At present, there is no evidence for or against a direct interaction between E-cadherin and EphA2. The two proteins are expressed in overlapping patterns, but we have not been able to coimmunoprecipitate EphA2 and E-cadherin.⁵ EphA2

⁴ M. S. Kinch, unpublished results.

⁵ N. D. Zantek, unpublished results.

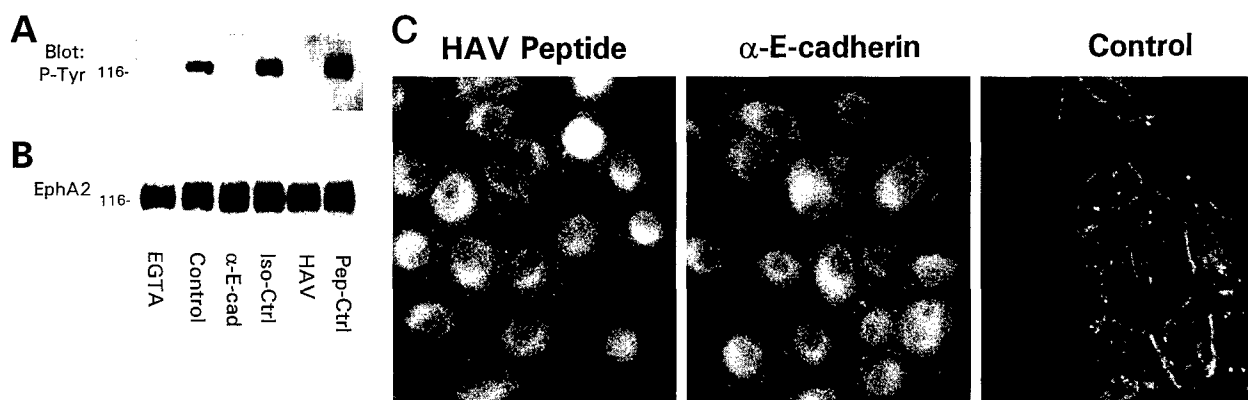


Fig. 7. Inhibition of E-cadherin-mediated adhesion. Following treatment of MCF-10A cell monolayers with EGTA, normal medium conditions were restored in the absence (*Control*) or presence of function-blocking E-cadherin antibodies (α -E-cad) or peptides (*HAV*). Isotype control antibodies (*Iso-Ctrl*) and scrambled peptides (*Pep-Ctrl*) were included as matched negative controls. *A*, immunoprecipitated EphA2 was subjected to Western blot analysis with phosphotyrosine (PY20) antibodies. *B*, the same blot as in *A* was stripped and reprobed with EphA2 antibodies as a loading control. *C*, EphA2 localization was determined after calcium restoration in the absence (*Control*) or presence of E-cadherin inhibitors.

also does not cocluster with E-cadherin at the cell surface in response to antibody-mediated aggregation of either molecule,⁶ which is consistent with our biochemical evidence. We cannot exclude that experimental conditions used for protein extraction dissociate such interactions or that a small fraction of activated EphA2 coclusters with E-cadherin. Direct interaction between the two molecules may not be necessary if E-cadherin primarily serves to stabilize cell-cell contacts and thereby promote interactions between EphA2 and its ligands. Other aspects of E-cadherin function, such as signaling (28), cytoskeletal association (47), and junction formation (16) might also target EphA2 to sites of cell-cell contact.

EphA2 Regulates Cell-ECM Adhesion and Growth. An immediate consequence of EphA2 activation is decreased cell-ECM contact at focal adhesions. Focal adhesions are sites of membrane-cytoskeletal interaction that provide anchorage for cell migration and invasion (48). Focal adhesions also play critical roles in signal transduction, where they organize intracellular signals that control cell growth and survival (39, 40). We propose that E-cadherin-mediated stabilization of ligand binding induces EphA2 to block focal adhesions. Consistent with this, it is understood that epithelial cells balance their cell-cell and cell-ECM adhesions and that this is linked with the proper functioning of E-cadherin (49, 50). Individual epithelial cells have more focal adhesions than cells within colonies, whereas cells with decreased E-cadherin function have increased cell-matrix adhesion, regardless of cell density (21). Although the molecular mechanisms responsible for this are unknown, many proteins that interact with Eph kinases regulate cell adhesion or cytoskeletal organization, including the p85 subunit of phosphatidylinositol 3'-kinase, Src, Fyn, and Ras-GAP (35, 51–53).

Focal adhesions initiate signals that promote cell growth, and it follows that loss of these structures may contribute to decreased cell growth following EphA2 activation. By inference, loss of EphA2 activation might contribute to deregulated

growth of neoplastic cells by increasing signals from focal adhesions. This would be consistent with evidence that neoplastic cells have increased signaling by focal adhesion proteins (e.g., FAK; Ref. 54). Although EphA2 activation decreases cell growth, the expression pattern of EphA2 does not fit the classic pattern of a tumor suppressor. Most tumor suppressors are inactivated either because of decreased expression or loss of enzymatic activity. In contrast, neoplastic cells express high levels of EphA2, which, although nonphosphorylated, retains comparable levels of enzymatic activity. An alternative explanation is that EphA2 positively regulates cell growth but that this signaling is reduced in nontransformed epithelia. Support for this includes evidence that EphA2 is overexpressed in neoplastic cells and is supported by the fact that other Eph kinases (e.g., EphA1) are oncogenic (55). In this scenario, EphA2 "activation" by E-cadherin or receptor aggregation might decrease EphA2 function, perhaps by reducing EphA2 expression levels. It is intriguing that the lowest levels of EphA2 are found in cells where it is phosphorylated and that ligand-mediated aggregation decreases EphA2 expression levels. A third possibility is that EphA2 functions very differently in normal and neoplastic epithelia. The phosphotyrosine content and subcellular localization of EphA2 differ in normal and neoplastic cells, and either property could alter substrate specificity or availability. Indeed, tyrosine-phosphorylated EphA2 (but not unphosphorylated EphA2) interacts with the phosphatidylinositol 3'-kinase and the SLAP adapter protein (56). SLAP was recently shown to negatively regulate cell growth (57), which is supportive of our evidence that EphA2 also regulates cell proliferation. Future studies will be necessary to define EphA2's role as a positive and/or negative regulator of cell growth and to determine whether these properties differ between normal and neoplastic epithelia.

Conclusions. Loss of E-cadherin in carcinomas promotes invasion (18, 58), cell motility (27), and cell proliferation (26). In this study, we have identified the receptor tyrosine kinase EphA2 as one protein that is phosphorylated after cell-cell contact and demonstrated that both the phospho-

⁶ M. Fedor-Chaiken and M. S. Kinch, unpublished results.

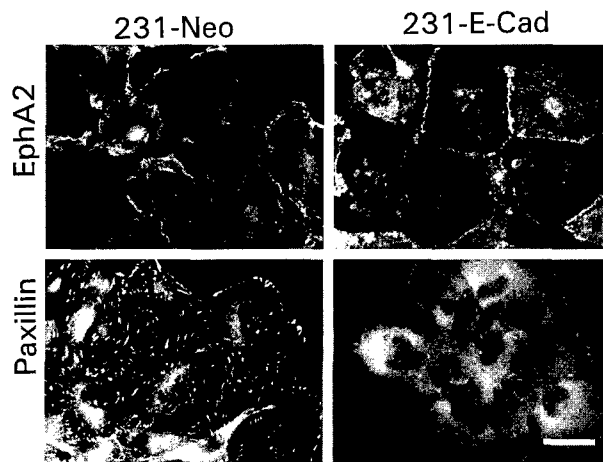


Fig. 8. E-Cadherin expression directs EphA2 into cell-cell contacts. The subcellular distribution of EphA2 and paxillin was assessed by immunofluorescence microscopy in control (231-Neo) and E-cadherin transfected (231-E-Cad) MDA-MB-231 cells. Note that E-cadherin promotes a redistribution of EphA2 into cell-cell contacts and decreases focal adhesions. Scale bar, 25 μ m.

ylation and localization of EphA2 are sensitive to changes in E-cadherin function and expression. We also find that EphA2 activation negatively regulates cell-ECM adhesion and cell growth. These findings raise the possibility that important effects of E-cadherin on tumor cell behavior may occur via effects on EphA2.

Materials and Methods

Cell Lines and Antibodies. Human breast carcinoma cells and non-transformed human mammary epithelial cell lines were cultured as described previously (29, 46). We purchased antibodies specific for E-cadherin (polyclonal antibodies, Transduction Laboratories, Lexington, KY; and DECMA-1, Sigma Chemical Co., St. Louis, MO), phosphotyrosine (PY20, ICN, Costa Mesa, CA; 4G10, Upstate Biotechnology Inc., Lake Placid, NY; and polyclonal antibodies, Transduction Laboratories), and fluorescein-conjugated BrdUrd (Harlan Sera-Lab Ltd., Loughborough, United Kingdom). Monoclonal antibodies specific for EphA2 (clones D7 and B2D6) were produced in the laboratory as described (15) or purchased from Upstate Biotechnology Inc. Rabbit polyclonal antibodies for EphA2 were purchased from Santa Cruz Biotechnology, Inc. (Santa Cruz, CA). EK166B monoclonal EphA2 antibodies were generously provided by R. Lindberg (Amgen, Thousand Oaks, CA). Paxillin-specific antibodies were obtained from K. Burridge (University of North Carolina, Chapel Hill, NC). To visualize f-actin, we used fluorescein-conjugated phalloidin, purchased from Molecular Probes (Eugene, OR).

Western Blot Analysis. Unless noted otherwise, all experiments used confluent cell monolayers that were extracted in a buffer containing 1% Triton X-100 or in RIPA buffer containing 1% Triton X-100, 0.5% sodium deoxycholate, and 0.1% SDS for 6 min on ice, as described previously (21). After protein concentrations were measured by Coomassie Blue staining (Pierce, Rockford, IL) or Bio-Rad D₅ Protein Assay (Hercules, CA), equal amounts of protein were resolved by SDS-PAGE and transferred to nitrocellulose (Protran, Schleicher & Schuell, Keene, NH), and Western blot analysis was performed as described previously (21). Antibody binding was detected by enhanced chemiluminescence as recommended by the manufacturer (Pierce). To reprobe, we stripped blots as described previously (21).

Immunofluorescence and Confocal Microscopy. Immunostaining was performed as described previously (21). In brief, cells were grown on glass coverslips to visualize individual cells. Cells were observed at both high cell density (~70% confluence) and low cell density (~20% confluence) by seeding 1×10^6 cells onto either a 3.5- or 10-cm tissue culture

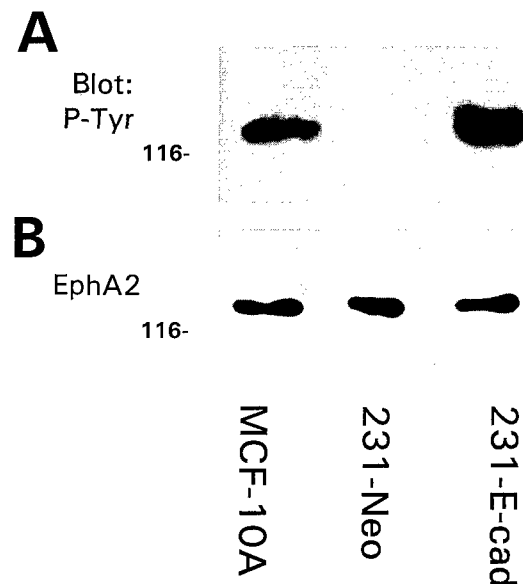


Fig. 9. E-cadherin expression restores normal EphA2 function. **A**, the phosphotyrosine content of immunoprecipitated EphA2 was measured by Western blot analysis following transfection of MDA-MB-231 cells with E-cadherin (231-E-cad) or a matched vector control (231-Neo). MCF-10A was included as a positive control for EphA2 tyrosine phosphorylation. **B**, The blot from **A** was stripped and reprobed with EphA2-specific antibodies as a loading control.

plate overnight at 37°C. At high cell density, extensive overlapping of neoplastic cells precludes accurate subcellular visualization. The samples were fixed in 3.7% formaldehyde solution, extracted in 0.5% Triton X-100, and stained. Immunostaining was visualized using rhodamine-conjugated donkey antimouse antibodies (Chemicon, Temecula, CA) and FITC-conjugated donkey antirabbit (Chemicon) and epifluorescence microscopy (model BX60, $\times 600$, Olympus Lake Success, NY) and recorded onto T-Max 400 film (Eastman-Kodak, Rochester, NY). For confocal microscopy, samples were viewed on a Nikon Diaphot 300 outfitted with a Bio-Rad MRC 1024 UV/Vis System and Coherent Innova Enterprise model 622 60-mW output water-cooled lasers.

Immunoprecipitation. Immunoprecipitation experiments were performed as described (21) for 1.5 h at 4°C with the appropriate EphA2-specific monoclonal antibodies (D7 or B2D6) and rabbit antimouse (Chemicon) conjugated protein A-Sepharose (Sigma). Immunoprecipitates were washed three times in lysis buffer, resuspended in SDS sample buffer (Tris buffer containing 5% SDS, 3.8% DTT, 25% glycerol, and 0.1% bromophenol blue), and resolved by 10% SDS-PAGE.

In Vitro Kinase Assays. For *in vitro* autophosphorylation assays, immunoprecipitated EphA2 was washed in lysis buffer and incubated in 10 mM PIPES, 3 mM MnCl₂, 5 mM PNPP (Sigma 104 phosphatase substrate; Sigma), 1 mM NaVO₄, 1 μ M ATP, and 10 μ Ci of [γ -³²P]ATP (New England Nuclear, Boston, MA) at 25°C for the times shown. The reactions were terminated by the addition of 5 \times Laemmli sample buffer at multiple time points before saturation. After resolving samples by 10% SDS-PAGE, the gel was transferred to nitrocellulose (Schleicher & Schuell) or Immobilon P (Pierce), and incorporated material was detected by autoradiography. To hydrolyze phosphoserine/threonine, we treated the membranes with 1 N KOH at 65°C for 1 h and reassessed them by autoradiography. After several half-lives, Western blot analysis was performed to determine EphA2 loading.

Cross-Linking of EphA2 Receptors. For antibody cross-linking experiments, cells grown as a monolayer were incubated at 4°C for 20 min with 4 μ g/ml EphA2 antibody (either clone EK166B or B2D6) or purified fusion protein of ephrin-A1 fused to IgG (B61-IgG; Ref. 10). Primary antibody alone, rabbit antimouse IgG alone and control fusion proteins were used as controls. The samples were washed with medium, incubated with 20 μ g/ml rabbit antimouse IgG in conditioned medium at 4°C

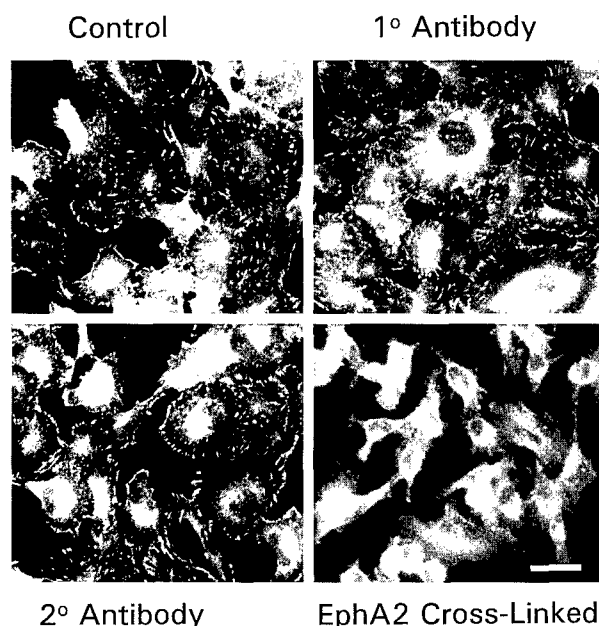


Fig. 10. EphA2 activation decreases cell-ECM adhesion. The presence of focal adhesions was assessed by immunostaining for paxillin in MDA-MB-231 cells before and after activation of EphA2 by antibody-mediated aggregation. Note that incubation of cells with either primary (1°) or secondary (2°) antibodies alone did not alter the presence of focal adhesions, whereas EphA2 aggregation dissipated focal adhesions. Scale bar, 25 μ m.

for 10 min, and warmed to 37°C for 10 min before extraction and immunoprecipitation. To determine the optimal time for activation, we incubated the plates in the presence of cross-linking antibody at 37°C for 0–120 min.

EGTA and Antibody Treatments. “Calcium switch” experiments were performed as described previously (28). Monolayers of MCF-10A cells were grown to ~80% confluence. EGTA was added to growth medium to a final concentration of 4 mM, and the cells were incubated at 37°C for 30 min. The medium was removed, and calcium concentrations restored with normal growth medium. To block E-cadherin function, we supplemented the medium with E-cadherin antibodies (1:100 dilution; DECMA-1; Sigma) or 10 μ g/ml peptide corresponding to the E-cadherin HAV sequence (YTLFSHAVSSNGN). Controls include isotype control antibodies (rat anti-HA antibody; Boehringer Mannheim, Indianapolis, IN) and matched, scrambled peptides (SGATNSLHNFSVY). The Purdue Laboratory for Macromolecular Structure synthesized peptides. Cells were then incubated for the indicated times at 37°C and extracted for Western blot analysis and immunoprecipitation. Cell monolayers grown on glass coverslips were treated in the same manner and immunostained for EphA2.

E-Cadherin Expression and Function. MDA-MB-231 cells were co-transfected with pBATEM2, a mouse E-cadherin expression vector (59) and pSV2neo (60) using FuGENE 6 Transfection Reagent (Boehringer Mannheim), following the manufacturer's instructions. Transfected cells were selected in growth media supplemented with 400 μ g/ml G418. Immunostaining and Western blot analysis with specific antibodies confirmed E-cadherin expression.

Proliferation Assay. Cells were plated onto glass coverslips and cultured overnight in growth medium. EphA2 antibodies (EK166B or B2D6, extracellular or D7, intracellular) or ligand fusion protein (B61-IgG) were added to the media at 1 μ g/ml and incubated at 4°C for 20 min, washed with medium, and incubated with 20 μ g/ml rabbit antimouse plus 3 μ g/ml BrdUrd at 37°C for 4 h. Cells were fixed in cold methanol for 8 min, extracted with 2 N HCl at 37°C for 30 min and stained with a BrdUrd antibody to indicate proliferating cells and Hoechst dye to label the nuclei of all cells on the coverslip. A minimum of six random fields were selected

Table 1 EphA2 Activation Inhibits Cell Proliferation^a

Cell line	Treatment	% BrdUrd uptake (mean \pm SE)	Statistical analysis ^b (P)
MDA-MB-231	Untreated	43.8 \pm 2.0	
	Primary Ab ^c alone	44.1 \pm 2.2	>0.43
	Secondary Ab alone	39.7 \pm 2.3	>0.21
	Primary + secondary	30.4 \pm 1.7	<0.0001
	Control-IgG + secondary	43.0 \pm 2.1	>0.44
MDA-MB-435	B61-IgG + secondary	29.1 \pm 3.1	<0.01 ^d
	Untreated	52.8 \pm 5.1	
	Primary Ab alone	52.6 \pm 3.4	>0.25
	Secondary Ab alone	52.8 \pm 6.3	>0.39
MCF-10A (low density)	Primary + secondary	39.6 \pm 3.0	<0.00005
	Untreated	53.6 \pm 1.8	
	Primary Ab alone	53.9 \pm 0.8	>0.43
	Secondary Ab alone	55.1 \pm 0.5	>0.22
	Primary + secondary	45.0 \pm 1.4	<0.01

^a BrdUrd uptake into newly synthesized DNA was measured for 4 h after cross-linking of EphA2 at the cell surface with specific antibodies. The data represent at least three independent, double-blinded experiments. Cell growth was determined in at least 100 cells from each experimental and control, and the results shown are compared with DNA synthesis with untreated (untreated) samples. None of the differences between or among individual negative controls (untreated, primary antibody alone, or secondary antibody alone) were significant ($P > 0.05$).

^b Statistical analyses compared the experimental to untreated for each sample.

^c Ab, antibody.

^d For the fusion proteins, there was also a significant difference ($P < 0.02$) between the control and B61 fusion proteins.

in a double-blind study, and at least 150 cells were assessed in each sample. Each experiment was repeated at least three times.

Statistical Methods. All statistical analyses were performed using the SAS System for Windows, Version 6.12. An ANOVA model was used to compare the percentage of cells that grew in each field, within each specimen, in the control group to the percentage of cells that grew in each field, within each specimen, in the experimental group. Group (control versus experimental) was treated as a fixed effect and specimen within each group was treated as a random effect. A normal probability plot of the residuals was used to assess the homogeneity of the variances of the mean percentage cell growth for the control and experimental groups. $P < 0.05$ was considered statistically significant.

Acknowledgments

We thank Drs. T. Tlsty for advice, R. Lindberg and T. Hunter for reagents, N. Glickman for data analysis, J. P. Robinson for assistance with confocal microscopy, and J. Stewart for expert technical support.

References

- van der Geer, P., Hunter, A. J., and Lindberg, R. A. Receptor protein-tyrosine kinases and their signal transduction pathways. *Annu. Rev. Cell Biol.*, 10: 251–337, 1994.
- Cance, W. G., and Liu, E. T. Protein kinases in human breast cancer. *Breast Cancer Res. Treat.*, 35: 105–114, 1995.
- Kopreski, M. S., Witters, L., Brennan, W. A. J., Buckwalter, E. A., Chinchilli, V. M., Demers, L. M., and Lipton, A. Protein tyrosine kinase activity in breast cancer and its relation to prognostic indicators. *Anticancer Res.*, 16: 3037–3041, 1996.
- Lower, E. E., Franco, R. S., Miller, M. A., and Martelo, O. J. Enzymatic and immunohistochemical evaluation of tyrosine phosphorylation in breast cancer specimens. *Breast Cancer Res. Treat.*, 26: 217–224, 1993.
- Lindberg, R. A., and Hunter, T. cDNA cloning and characterization of eck, an epithelial cell receptor protein-tyrosine kinase in the eph/elk family of protein kinases. *Mol. Cell. Biol.*, 10: 6316–6324, 1990.

6. Gale, N. W., and Yancopoulos, G. D. Ephrins and their receptors: a repulsive topic? *Cell Tissue Res.*, 290: 227-241, 1997.
7. Pasquale, E. B. The Eph family of receptors. *Curr. Opin. Cell Biol.*, 9: 608-615, 1997.
8. Zisch, A. H., and Pasquale, E. B. The Eph family: a multitude of receptors that mediate cell recognition signals. *Cell Tissue Res.*, 290: 217-226, 1997.
9. Rosenberg, I. M., Goke, M., Kanai, M., Reinecker, H. C., and Podolsky, D. K. Epithelial cell kinase-B61: an autocrine loop modulating intestinal epithelial migration and barrier function. *Am. J. Physiol.*, 273: G824-G832, 1997.
10. Pandey, A., Shao, H., Marks, R. M., Poverini, P. J., and Dixit, V. M. Role of B61, the ligand for the Eck receptor tyrosine kinase, in TNF- α -induced angiogenesis. *Science (Washington DC)*, 268: 567-569, 1995.
11. Magal, E., Holash, J. A., Toso, R. J., Chang, D., Lindberg, R. A., and Pasquale, E. B. B61, a ligand for the Eck receptor protein-tyrosine kinase, exhibits neurotrophic activity in cultures of rat spinal cord neurons. *J. Neurosci. Res.*, 43: 735-744, 1996.
12. Easty, D. J., Guthrie, B. A., Maung, K., Farr, C. J., Lindberg, R. A., Toso, R. J., Herlyn, M., and Bennett, D. C. Protein B61 as a new growth factor: expression of B61 and up-regulation of its receptor epithelial cell kinase during melanoma progression. *Cancer Res.*, 55: 2528-2532, 1995.
13. Andres, A. C., Zuercher, G., Djonov, V., Flueck, M., and Ziemiecki, A. Protein tyrosine kinase expression during the estrous cycle and carcinogenesis of the mammary gland. *Int. J. Cancer*, 63: 288-296, 1995.
14. Maher, P. A., Pasquale, E. B., Wang, J. Y., and Singer, S. J. Phosphotyrosine-containing proteins are concentrated in focal adhesions and intercellular junctions in normal cells. *Proc. Natl. Acad. Sci. USA*, 82: 6576-6580, 1985.
15. Kinch, M. S., Kilpatrick, K., and Zhong, C. Identification of tyrosine phosphorylated adhesion proteins in human cancer cells. *Hybridoma*, 17: 227-235, 1998.
16. Geiger, B., and Ayalon, O. Cadherins. *Annu. Rev. Cell Biol.*, 8: 307-332, 1992.
17. Fagotto, F., and Gumbiner, B. M. Cell contact-dependent signaling. *Dev. Biol.*, 180: 445-454, 1996.
18. Behrens, J., and Birchmeier, W. Cell-cell adhesion in invasion and metastasis of carcinomas. *Cancer Treat. Res.*, 71: 251-266, 1994.
19. Hamaguchi, M., Matsuyoshi, N., Ohnishi, Y., Gotoh, B., Takeichi, M., and Nagai, Y. p60v-src causes tyrosine phosphorylation and inactivation of the N-cadherin-catenin cell adhesion system. *EMBO J.*, 12: 307-314, 1993.
20. Matsuyoshi, N., Hamaguchi, M., Taniguchi, S., Nagafuchi, A., Tsukita, S., and Takeichi, M. Cadherin-mediated cell-cell adhesion is perturbed by v-src tyrosine phosphorylation in metastatic fibroblasts. *J. Cell Biol.*, 118: 703-714, 1992.
21. Kinch, M. S., Clark, G. J., Der, C. J., and Burridge, K. Tyrosine phosphorylation regulates the adhesions of ras-transformed breast epithelia. *J. Cell Biol.*, 130: 461-471, 1995.
22. Behrens, J., Vakaet, L., Friis, R., Winterhager, E., Van, R. F., Mareel, M. M., and Birchmeier, W. Loss of epithelial differentiation and gain of invasiveness correlates with tyrosine phosphorylation of the E-cadherin/ β -catenin complex in cells transformed with a temperature-sensitive v-SRC gene. *J. Cell Biol.*, 120: 757-766, 1993.
23. Volberg, T., Zick, Y., Dror, R., Sabanay, I., Gilon, C., Levitzki, A., and Geiger, B. The effect of tyrosine-specific protein phosphorylation on the assembly of adherens-type junctions. *EMBO J.*, 11: 1733-1742, 1992.
24. Frixen, U. H., Behrens, J., Sachs, M., Eberle, G., Voss, B., Warda, A., Lochner, D., and Birchmeier, W. E-cadherin-mediated cell-cell adhesion prevents invasiveness of human carcinoma cells. *J. Cell Biol.*, 113: 173-185, 1991.
25. Marrs, J. A., Andersson-Fisone, C., Jeong, M. C., Cohen-Gould, L., Zurzolo, C., Nabi, I. R., Rodriguez-Boulon, E., and Nelson, W. J. Plasticity in epithelial cell phenotype: modulation by expression of different cadherin cell adhesion molecules. *J. Cell Biol.*, 129: 507-519, 1995.
26. Kandikonda, S., Oda, D., Niederman, R., and Sorkin, B. C. Cadherin-mediated adhesion is required for normal growth regulation of human gingival epithelial cells. *Cell Adhes. Commun.*, 4: 13-24, 1996.
27. Chen, H., Paradies, N. E., Fedor-Chaiken, M., and Brackenbury, R. E-cadherin mediates adhesion and suppresses cell motility via distinct mechanisms. *J. Cell Sci.*, 110: 345-356, 1997.
28. Kinch, M. S., Petch, L., Zhong, C., and Burridge, K. E-cadherin engagement stimulates tyrosine phosphorylation. *Cell Adhes. Commun.*, 4: 425-437, 1997.
29. Paine, T. M., Soule, H. D., Pauley, R. J., and Dawson, P. J. Characterization of epithelial phenotypes in mortal and immortal human breast cells. *Int. J. Cancer*, 50: 463-473, 1992.
30. Pauley, R. J., Soule, H. D., Tait, L., Miller, F. R., Wolman, S. R., Dawson, P. J., and Heppner, G. H. The MCF10 family of spontaneously immortalized human breast epithelial cell lines: models of neoplastic progression. *Eur. J. Cancer Prev.*, 2 (Suppl. 3): 67-76, 1993.
31. Price, J. E. Metastasis from human breast cancer cell lines. *Breast Cancer Res. Treat.*, 39: 93-102, 1996.
32. Zhang, R. D., Fidler, I. J., and Price, J. E. Relative malignant potential of human breast carcinoma cell lines established from pleural effusions and a brain metastasis. *Invasion Metastasis*, 11: 204-215, 1991.
33. Foulkes, J. G., Chow, M., Gorka, C., Frackelton, A. R. J., and Baltimore, D. Purification and characterization of a protein-tyrosine kinase encoded by the Abelson murine leukemia virus. *J. Biol. Chem.*, 260: 8070-8077, 1985.
34. Hutchcroft, J. E., Harrison, M. L., and Geahlen, R. L. B lymphocyte activation is accompanied by phosphorylation of a 72-kDa protein-tyrosine kinase. *J. Biol. Chem.*, 266: 14846-14849, 1991.
35. Pandey, A., Lazar, D. F., Saltiel, A. R., and Dixit, V. M. Activation of the Eck receptor protein tyrosine kinase stimulates phosphatidylinositol 3-kinase activity. *J. Biol. Chem.*, 269: 30154-30157, 1994.
36. Gale, N. W., Holland, S. J., Valenzuela, D. M., Fienniken, A., Pan, L., Ryan, T. E., Henkemeyer, M., Strebhardt, K., Hirai, H., Wilkinson, D. G., Pawson, T., Davis, S., and Yancopoulos, G. D. Eph receptors and ligands comprise two major specificity subclasses and are reciprocally compartmentalized during embryogenesis. *Neuron*, 17: 9-19, 1996.
37. Vestweber, D., and Kemler, R. Rabbit antiserum against a purified surface glycoprotein decompacts mouse preimplantation embryos and reacts with specific adult tissues. *Exp. Cell Res.*, 152: 169-178, 1984.
38. Ozawa, M., Hoschutzky, H., Herrenknecht, K., and Kemler, R. A possible new adhesive site in the cell-adhesion molecule uvomorulin. *Mech. Dev.*, 33: 49-56, 1990.
39. Burridge, K., and Chrzanowska-Wodnicka, M. Focal adhesions, contractility, and signaling. *Annu. Rev. Cell Dev. Biol.*, 12: 463-518, 1996.
40. Parsons, J. T. Integrin-mediated signalling: regulation by protein tyrosine kinases and small GTP-binding proteins. *Curr. Opin. Cell Biol.*, 8: 146-152, 1996.
41. Press, M. F., Jones, L. A., Godolphin, W., Edwards, C. L., and Slamon, D. J. *HER-2/neu* oncogene amplification and expression in breast and ovarian cancers. *Prog. Clin. Biol. Res.*, 354A: 209-221, 1990.
42. Murphy, L. C., Murphy, L. J., Dubik, D., Bell, G. I., and Shiu, R. P. Epidermal growth factor gene expression in human breast cancer cells: regulation of expression by progestins. *Cancer Res.*, 48: 4555-4560, 1988.
43. Holland, S. J., Gale, N. W., Gish, G. D., Roth, R. A., Songyang, Z., Cantley, L. C., Henkemeyer, M., Yancopoulos, G. D., and Pawson, T. Juxtamembrane tyrosine residues couple the Eph family receptor EphB2/Nuk to specific SH2 domain proteins in neuronal cells. *EMBO J.*, 16: 3877-3888, 1997.
44. George, S. E., Simokat, K., Hardin, J., and Chisholm, A. D. The VAB-1 Eph receptor tyrosine kinase functions in neural and epithelial morphogenesis in *C. elegans*. *Cell*, 92: 633-643, 1998.
45. Henkemeyer, M., Orioli, D., Henderson, J. T., Saxton, T. M., Roder, J., Pawson, T., and Klein, R. Nuk controls pathfinding of commissural axons in the mammalian central nervous system. *Cell*, 86: 35-46, 1996.
46. Bae, S. N., Arand, G., Azzam, H., Pavasant, P., Torri, J., Frandsen, T. L., and Thompson, E. W. Molecular and cellular analysis of basement

membrane invasion by human breast cancer cells in Matrigel-based *in vitro* assays. *Breast Cancer Res. Treat.*, 24: 241-255, 1993.

47. Vestweber, D., and Kemler, R. Some structural and functional aspects of the cell adhesion molecule uvomorulin. *Cell Differ.*, 15: 269-273, 1984.
48. Burridge, K., Fath, K., Kelly, T., Nuckolls, G., and Turner, C. Focal adhesions: transmembrane junctions between the extracellular matrix and the cytoskeleton. *Annu. Rev. Cell Biol.*, 4: 487-525, 1988.
49. Kinch, M. S., and Burridge, K. Altered adhesions in ras-transformed breast epithelial cells. *Biochem. Soc. Trans.*, 23: 446-450, 1995.
50. Vestweber, D., and Kemler, R. Identification of a putative cell adhesion domain of uvomorulin. *EMBO J.*, 4: 3393-3398, 1985.
51. Stein, E., Huynh-Do, U., Lane, A. A., Cerretti, D. P., and Daniel, T. O. Nck recruitment to Eph receptor, EphB1/ELK, couples ligand activation to c-Jun kinase. *J. Biol. Chem.*, 273: 1303-1308, 1998.
52. Stein, E., Lane, A. A., Cerretti, D. P., Schoecklmann, H. O., Schroff, A. D., Van, E., RL, and Daniel, T. O. Eph receptors discriminate specific ligand oligomers to determine alternative signaling complexes, attachment, and assembly responses. *Genes Dev.*, 12: 667-678, 1998.
53. Zisch, A. H., Kalo, M. S., Chong, L. D., and Pasquale, E. B. Complex formation between EphB2 and Src requires phosphorylation of tyrosine 611 in the EphB2 juxtamembrane region. *Oncogene*, 16: 2657-2670, 1998.
54. Owens, L. V., Xu, L., Craven, R. J., Dent, G. A., Weiner, T. M., Kornberg, L., Liu, E. T., and Cance, W. G. Overexpression of the focal adhesion kinase (p125FAK) in invasive human tumors. *Cancer Res.*, 55: 2752-2755, 1995.
55. Maru, Y., Hirai, H., and Takaku, F. Overexpression confers an oncogenic potential upon the *eph* gene. *Oncogene*, 5: 445-447, 1990.
56. Pandey, A., Duan, H., and Dixit, V. M. Characterization of a novel Src-like adapter protein that associates with the Eck receptor tyrosine kinase. *J. Biol. Chem.*, 270: 19201-19204, 1995.
57. Roche, S., Alonso, G., Kazlauskas, A., Dixit, V. M., Courtneidge, S. A., and Pandey, A. Src-like adaptor protein (SLAP) is a negative regulator of mitogenesis. *Curr. Biol.*, 8: 975-978, 1998.
58. Takeichi, M. Cadherins in cancer: implications for invasion and metastasis. *Curr. Opin. Cell Biol.*, 5: 806-811, 1993.
59. Nose, A., Nagafuchi, A., and Takeichi, M. Expressed recombinant cadherins mediate cell sorting in model systems. *Cell*, 54: 993-1001, 1988.
60. Southern, P. J., and Berg, P. Transformation of mammalian cells to antibiotic resistance with a bacterial gene under control of the SV40 early region promoter. *J. Mol. Appl. Genet.*, 1: 327-341, 1982.

EphA2 Overexpression Causes Tumorigenesis of Mammary Epithelial Cells¹

Daniel P. Zelinski, Nicole Dodge Zantek, Jane C. Stewart, Armando R. Irizarry, and Michael S. Kinch²

Departments of Basic Medical Sciences [D. P. Z., N. D. Z., J. C. S., M. S. K.] and Veterinary Pathobiology [A. R. I.], Purdue University, West Lafayette, Indiana 47907-1246

ABSTRACT

Elevated levels of protein tyrosine phosphorylation contribute to a malignant phenotype, although the tyrosine kinases that are responsible for this signaling remain largely unknown. Here we report increased levels of the EphA2 (ECK) protein tyrosine kinase in clinical specimens and cell models of breast cancer. We also show that EphA2 overexpression is sufficient to confer malignant transformation and tumorigenic potential on nontransformed (MCF-10A) mammary epithelial cells. The transforming capacity of EphA2 is related to the failure of EphA2 to interact with its cell-attached ligands. Interestingly, stimulation of EphA2 reverses the malignant growth and invasiveness of EphA2-transformed cells. Taken together, these results identify EphA2 as a powerful oncoprotein in breast cancer.

INTRODUCTION

Cancer is a disease of aberrant signal transduction. In the search for signals that cause breast cancer, many lines of investigation have linked cancer with elevated expression or altered function of receptor tyrosine kinases (1). Recent studies have identified overexpression of HER2 or epidermal growth factor receptor in some tumors and used this knowledge to develop successful approaches for therapeutic targeting of cancer cells (2). However, overexpression of HER2 and epidermal growth factor receptor is limited to a subset of tumors, which creates a need to identify other tyrosine kinases that are responsible for cancer progression and pathogenesis.

When malignant cells metastasize to distant sites in the body, morbidity and mortality increase significantly (3). Metastatic cells have acquired the abilities to break away from the primary tumor, translocate to distant sites in the body, and colonize a foreign microenvironment (4). At the cellular level, malignant cells have overcome restraints on cell growth and migration that result from physical linkages and signals conveyed by cell-cell contacts (5). Malignant cells often have increased interactions with surrounding ECM³ proteins, which provide linkages and signals that promote several aspects of metastasis (6).

Our previous studies revealed that the levels of protein tyrosine phosphorylation regulate a balance between cell-cell and cell-ECM adhesions in epithelial cells (7). Using oncogene-transformed mammary epithelial cells, we showed that elevated tyrosine kinase activity weakens cell-cell contacts and promotes ECM adhesions (7). To identify tyrosine kinases that control tumor cell adhesion, we developed novel technologies to generate monoclonal antibodies against tyrosine kinases in cancer cells (8). We focused on one particular antigen that was functionally altered in oncogene-transformed epithelial cells. This antigen was identified as EphA2 (ECK). EphA2 is a M_r 130,000 receptor tyrosine kinase that is expressed on adult epithelia (9), where it is found at low levels and enriched within sites of

cell-cell adhesion (10). The subcellular localization is important because EphA2 binds five different ligands, ephrinA1-5, which are attached to the cell membrane (11).

MATERIALS AND METHODS

Cells and Antibodies. All cells were cultured as described previously (10). Monoclonal antibodies against EphA2 were generated in our laboratory (D7 and B2D6; Ref. 8) or purchased from Upstate Biologicals, Inc. (Lake Placid, NY). EK166B was generously provided by Dr. R. Lindberg (Amgen, Thousand Oaks, CA). Antibodies specific for β -catenin and P-Tyr (PY-20) were purchased from Transduction Laboratories (Lexington, KY). Antibodies specific for P-Tyr (4G10) were purchased from Upstate Biologicals, Inc. EA1 was a generous gift from Dr. B. Wang (Case Western Reserve University, Cleveland, OH).

Western Blot Analysis and Immunoprecipitation. Western blot analyses were performed as described previously (10), and antibody binding was detected by enhanced chemiluminescence (Pierce, Rockford, IL) and autoradiography (Kodak X-OMAT; Kodak, Rochester, NY). To confirm equal sample loading, the blots were stripped and reprobed with antibodies specific for β -catenin or vinculin.

Immunohistochemistry and Immunofluorescence Staining. Formalin-fixed, paraffin-embedded "sausage" slides, each containing 15-30 breast cancer specimens (kindly provided by B. J. Kerns; BioGenex, San Ramon, CA), were stained and scored as described previously (12). Mean immunostaining intensity in benign and malignant breast was compared using Student's *t* test with statistical software (SAS for Windows v.6.04 and Microsoft Excel '97), defining $P < 0.05$ as significant. Staining of cell monolayers with EphA2 antibodies (clones D7 or B2D6) was performed as described previously (10).

Transfection and Selection. Monolayers of MCF-10A cells were cotransfected with the pNeoMSV-EphA2 (generously provided by Dr. T. Hunter, Scripps Institute, La Jolla, CA) and pBABE-Puro eukaryotic expression vectors, at a 4:1 ratio, using LipofectAMINE Plus (Life Technologies, Inc., Grand Island, NY). As a control for the transfection procedure, a parallel transfection was performed using pNeoMSV and pBABE-Puro. Puromycin-resistant cells were selected by supplementing the growth medium with 1 μ g/ml puromycin (Sigma, St. Louis, MO). EphA2 overexpression was confirmed by Western blot analysis with specific antibodies. All experiments were performed using bulk culture transfectants, and identical results were obtained using cells from two separate transfections with EphA2 cDNAs. Parental cells and cultures transfected with pBABE-Puro were used as negative controls.

Colony Formation in Soft Agar. Colony formation in soft agar was performed as described previously (13). Colony formation was scored microscopically, and clusters of at least three cells were defined as a positive result. For experiments with EA1, 0.5 μ g/ml EA1 or a matched vehicle (50% glycerol in PBS) was included in top agar solution, and ligand was replenished daily with fresh media. The data shown are pooled from 10 separate high-power microscopic fields from each sample and representative of at least three separate experiments.

Cell Behavior in Matrigel. The behavior of cells in Matrigel was analyzed as described previously (14). Briefly, tissue culture dishes were coated with Matrigel (Collaborative, Bedford, MA) at 37°C before adding 1×10^5 vector- or EphA2-transfected MCF-10A cells. The behavior of EphA2-overexpressing cells was assessed at 6-h intervals using an inverted light microscope (Olympus IX-70). For experiments with EA1, the culture medium was supplemented with 0.5 μ g/ml EA1 or an appropriately matched vehicle control. All images were recorded onto 35-mm film (T-Max-400; Kodak, Rochester, NY).

Xenograft Analyses. Athymic (*nu/nu*) 3-4-week-old mice were purchased from Harlan Sprague Dawley (Indianapolis, IN) and Charles River (Wilmington, MA) and acclimated for 7-10 days. For s.c. implantation, 1×10^6 or 5×10^6 vector- or EphA2-transfected MCF-10A cells were suspended in 100

Received 8/10/00; accepted 1/3/01.

The costs of publication of this article were defrayed in part by the payment of page charges. This article must therefore be hereby marked advertisement in accordance with 18 U.S.C. Section 1734 solely to indicate this fact.

¹Supported by the American Cancer Society, NIH, Department of Defense Breast Cancer Research Program, and the Howard Hughes Medical Institute (N. D. Z.).

²To whom requests for reprints should be addressed, at Department of Basic Medical Sciences, 1246 Lynn Hall, Purdue University, West Lafayette, Indiana 47907-1246.

³The abbreviations used are: ECM, extracellular matrix; EA1, EphrinA1-Fc; P-Tyr, phosphotyrosine; 3dRBM, 3-dimensional, reconstituted basement membrane.

μ l of fresh media and injected into the right cranialateral thorax (axilla) using a 23-gauge needle. For tail vein injections, 1×10^6 cells were injected into the tail vein, and mice were monitored for 7–28 days. At necropsy, primary tumors and all organs were evaluated macroscopically for the presence of tumors. Tissue samples of the primary tumor and organs were fixed in 10% buffered neutral formalin and embedded in paraffin. Tissue sections of the tumors and lung were stained with H&E to assess morphology. Lung sections were stained with antibodies specific for cytokeratin (AE1/AE3) or factor VIII-related antigen (DAKO, Carpinteria, CA) to confirm the epithelial nature of lung metastases.

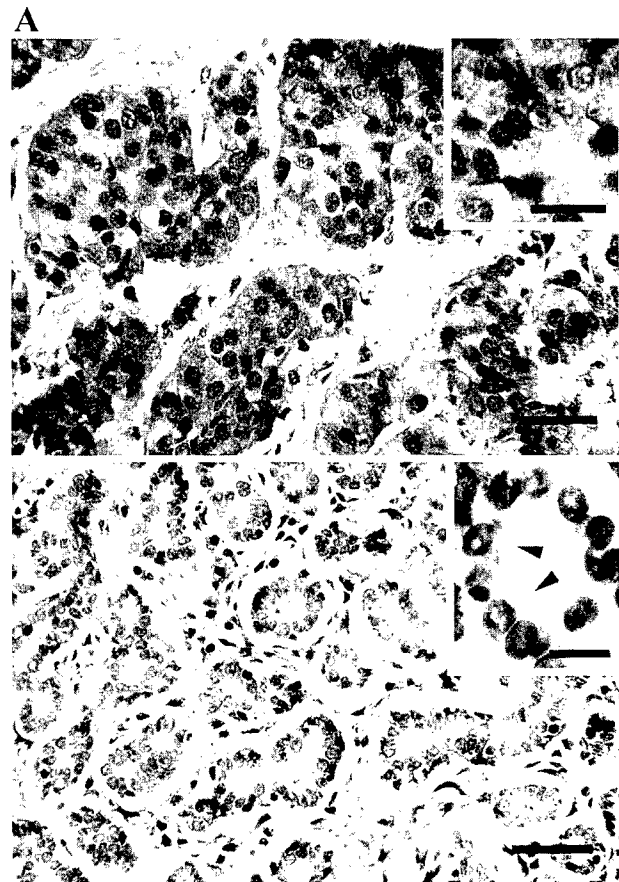
RESULTS

Elevated EphA2 Protein Levels in Breast Cancer Cells. The levels of EphA2 protein were measured in clinical specimens of benign or malignant mammary glands (Fig. 1A). Immunohistochemical staining of formalin-fixed, paraffin-embedded tissue sections revealed a low level of EphA2 immunoreactivity in benign mammary epithelia, with an average staining intensity of 0.1 (using a 0–3 scale to report staining intensity; Fig. 1B). EphA2 immunoreactivity was increased in breast carcinoma specimens, with an average staining intensity of 2.9. Interestingly, EphA2 immunoreactivity in the breast carcinoma cells was diffusely distributed throughout the cytoplasm (Fig. 1A, top). Increased staining intensity was accompanied by a larger percentage of carcinoma cells (an average of 87%) that stained positive for EphA2 as compared with benign mammary epithelial cells (an average of 3%).

The elevated levels of EphA2 in clinical specimens prompted us to measure EphA2 in cell models of nontransformed breast epithelia (MCF-10A, MCF-12A, and MCF-10-2) and aggressive breast cancer epithelia [Hs578T, MDA-436, MDA-435, MDA-231, and BT549 (15, 16)]. Equal amounts of whole cell extracts were resolved by SDS-PAGE and subjected to Western blot analysis using EphA2-specific antibodies. Whereas lower levels of EphA2 protein were detected in nontransformed epithelial cells (Fig. 2A, Lanes 1–3), more EphA2 was detected in aggressive carcinoma cells (Fig. 2A, Lanes 4–8). Identical results were obtained when equivalent numbers of cells or equal amounts of protein were analyzed (data not shown). Increased levels of EphA2 in aggressive cancer cell models were also confirmed using different EphA2 antibodies (D7, B2D6, and EK166B; data not shown), revealing that the differences in EphA2 levels did not reflect changes in a single epitope. The blots were stripped and reprobed with antibodies specific for β -catenin (Fig. 2A) or vinculin (data not shown), which confirmed equal sample loading.

EphA2 Overexpression in MCF-10A Cells. Because EphA2 was overexpressed in a large number of breast cancers, we assessed the consequences of EphA2 overexpression in nontransformed mammary epithelial cells. MCF-10A cells were transfected with human EphA2 cDNA (EphA2) or a vector control (Vector; Fig. 2B, top panel). After establishing cultures of MCF-10A cells with stable overexpression of EphA2, microscopic evaluation revealed differences in the cell morphology as compared with vector-transfected control cells (Fig. 2C). Nontransformed MCF-10A cells displayed an epithelial morphology and interacted with one another, even at low cell density. In contrast, EphA2-overexpressing MCF-10A cells (MCF^{EphA2} cells) adopted a fibroblast-like morphology and did not form cell-cell contacts, even at high cell density (data not shown). To confirm that the mesenchymal morphology did not represent clonal variation, a separate sample of MCF-10A cells was transfected with EphA2 cDNAs and yielded identical results.

EphA2 Overexpression Decreases Ligand-mediated Stimulation. Because stable cell-cell contacts cause EphA2 to become enriched within sites of cell-cell contact (10), we assessed EphA2 subcellular localization by immunostaining with specific antibodies



	EphA2 Staining Intensity			
	0 (Negative)	1 (Weak)	2 (Moderate)	3 (Strong)
Benign Breast				
Sample Number	9	3	0	0
% Cells Positive	<5%	10–20%		
Breast Carcinoma				
Sample Number	1	0	6	5
% Cells Positive	<5%		50–100%	90–100%

Fig. 1. EphA2 overexpression in breast cancer specimens. A, EphA2 protein levels were assessed by immunohistochemical staining of formalin-fixed, paraffin-embedded specimens of malignant (top) or benign (bottom) breast specimens (bar, 40 μ m). The insets are higher magnification images (bar, 10 μ m). Note that the nonimmunoreactive cytoplasm of benign epithelium (arrowheads) contrasts with the strong and cytoplasmic immunoreactivity of malignant cells. B, the results of immunohistochemical staining of benign and malignant mammary tissues with EphA2-specific antibodies are shown. The staining intensity and fraction of cells staining positive was evaluated as described in "Materials and Methods." Statistical analyses revealed differences in EphA2 staining of benign and malignant samples ($P < 1 \times 10^{-6}$).

(Fig. 2C). The EphA2 on nontransformed MCF-10A cells was restricted to a narrow line where adjacent cells came into direct contact with each other, with little staining of membrane that was not in contact with neighboring cells. In contrast, the pattern of EphA2 staining on MCF^{EphA2} cells was diffuse, with little staining of cell-cell contacts. Notably, the cytoplasmic immunoreactivity of EphA2, which was prominent in tumor specimens, was also observed in MCF^{EphA2} cells.

The lack of EphA2 within the cell-cell contacts of MCF^{EphA2} cells was intriguing because EphA2 is stimulated by ligands that are anchored to the cell membrane (11, 17). To measure EphA2 stimu-

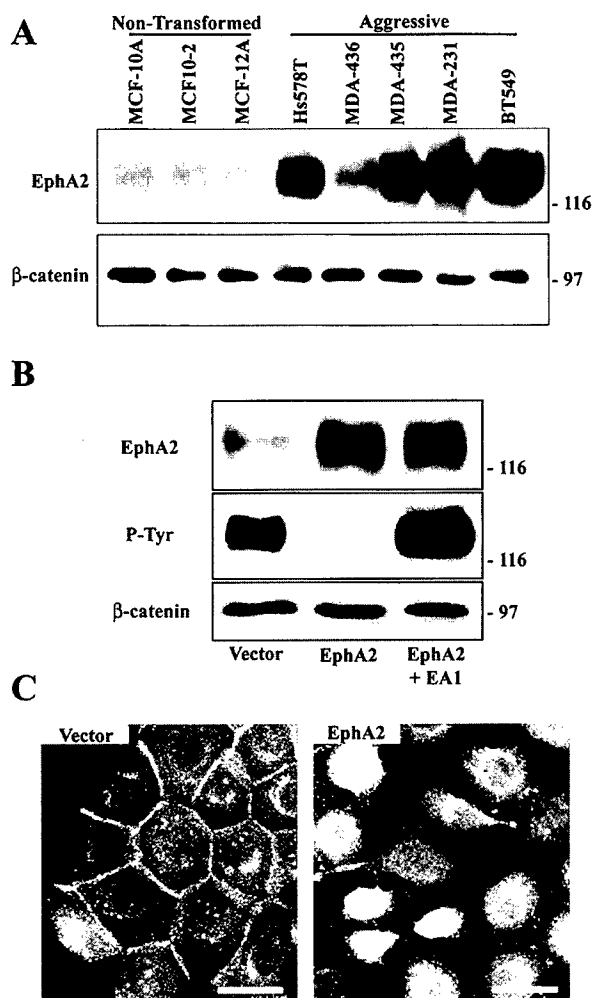


Fig. 2. EphA2 overexpression in malignant cells decreases ligand binding. **A**, whole cell lysates from cell models of nontransformed mammary epithelia (Lanes 1–3) or aggressive breast cancers (Lanes 4–8) were resolved by SDS-PAGE. Western blot analysis was performed using EphA2-specific (D7) antibodies. As a loading control, the membranes were stripped and reprobed with antibodies specific for β -catenin. The relative electrophoretic mobility of standards is shown on the right. **B**, MCF-10A cells were cotransfected with pBABE-Puro or either pNeoMSV (Vector) or pNeoMSV-EphA2 (EphA2) and treated in the presence or absence of 0.5 μ g/ml EA1. Western blot analysis of whole cell lysates resolved by SDS-PAGE was performed using EphA2-specific antibodies (top). To control for sample loading, the membranes were stripped and reprobed with β -catenin antibodies (bottom). The P-Tyr content of immunoprecipitated EphA2 was determined by Western blot analyses with P-Tyr-specific antibodies (PY-20 and 4G10; middle). The blots were then stripped and reprobed with EphA2-specific antibodies as a loading control (clone D7; data not shown). **C**, monolayers of vector- or EphA2-transfected MCF-10A cells were stained with EphA2-specific antibodies (clone D7). Note that EphA2 was enriched within sites of cell-cell contact in vector-transfected controls but was diffusely distributed in EphA2-transfected cells. Bar, 50 μ m.

lation, the P-Tyr content of immunoprecipitated EphA2 was measured by Western blot analysis with P-Tyr-specific antibodies (Fig. 2B, middle panel). Whereas the EphA2 in vector-transfected MCF-10A cells was tyrosine phosphorylated, EphA2 was not tyrosine phosphorylated in MCF^{EphA2} cells. The decreased P-Tyr content was confirmed using multiple EphA2 antibodies for immunoprecipitation (D7 and B2D6) and different P-Tyr-specific antibodies (4G10 and PY-20) for Western blot analyses (Table 1).

To test whether the EphA2 on MCF^{EphA2} cells could be stimulated by an exogenous ligand, we used EA1, which consists of the extracellular domain of ephrinA1 linked to immunoglobulin heavy chain (18). Treatment of MCF^{EphA2} cells with 0.5 μ g/ml EA1 increased the P-Tyr content of EphA2 (Fig. 2B, middle panel). Despite its inability to interact with its endogenous ligands, the EphA2 in MCF^{EphA2} cells could respond to exogenous stimuli.

EphA2 Overexpression Causes Malignant Transformation.

The pattern of defects in cell adhesion, EphA2 subcellular distribution, and P-Tyr content in MCF^{EphA2} cells were all reminiscent of metastatic cells (10), which prompted us to ask whether EphA2 overexpression induces malignant transformation. MCF^{EphA2} cells were found to colonize soft agar. Whereas vector-transfected MCF-10A cells formed fewer than 3 colonies/high-power field, MCF^{EphA2} cells displayed increased colony growth in soft agar, with an average of 30 colonies/sample ($P < 3 \times 10^{-7}$; Fig. 3A). We then tested whether the decreased ligand binding in MCF^{EphA2} cells was related to colony formation in soft agar. To test this, MCF^{EphA2} cells were suspended in soft agar in the presence or absence of 0.5 μ g/ml EA1. EA1 reduced colony formation in soft agar by 49% relative to vehicle-treated controls ($P < 5 \times 10^{-6}$). Thus, EphA2 stimulation reversed the effects of EphA2 overexpression.

Based on evidence linking the aggressiveness of tumor cells *in vivo* with their behavior in Matrigel (19), vector-transfected and EphA2-overexpressing MCF-10A cells were allowed to interact with Matrigel. Nontransformed MCF-10A cells rapidly organized into spherical colonies when cultured on Matrigel (regardless of EA1 treatment; Fig. 3B, left side). In contrast, MCF^{EphA2} cells adopted a stellate organization (Fig. 3B, top right) that was indistinguishable from the behavior of aggressive breast cancer cells (e.g., MDA-MB-231 and MDA-MB-435; data not shown). To test whether EphA2 stimulation could alter cell behavior on Matrigel, the MCF^{EphA2} cells were treated with 0.5 μ g/ml EA1, which restored a spherical phenotype that was comparable to that of nontransformed MCF-10A cells (Fig. 3B, bottom right).

EphA2 Overexpression Confers Tumorigenic Potential. Because *in vitro* analyses of transformation do not always predict tumorigenic potential *in vivo*, control or EphA2-overexpressing MCF-10A cells were implanted in athymic (*nu/nu*) mice (Fig. 4). The s.c. injection of MCF^{EphA2} cells caused the formation of palpable tumors within 4 days (Fig. 4, A–C) in 19 of 19 mice. The median volume of resulting tumors was related to the number of implanted cells and reached an average of 300 mm³ (for samples injected with 5×10^6 cells) within 10 days (Fig. 4E). Necropsy revealed that the tumors were firmly attached to the underlying axillary muscle and surrounded by fibrous tissue (data not shown). Histologically, the neoplastic cells were invasive and associated with fibrous connective tissue (Fig. 4, B and C). These neoplastic cells exhibited moderate cytoplasmic and nuclear pleomorphism and formed dysplastic tubular and secreting structures. In control experiments, cells transfected with vector DNA failed to grow in athymic mice (0 of 13 mice; Fig. 4E), and necropsy failed to identify any growth or invasion of these cells (data not shown).

Because the highest levels of EphA2 were consistently found in breast cancer cells that are invasive *in vivo* (16), 1×10^6 control or MCF^{EphA2} cells were injected into the tail vein of athymic mice. Within 7 days, necropsy revealed lung emboli within large- and medium-sized vessels in two of four mice injected with MCF^{EphA2} cells. The emboli were generally found to occlude large blood vessels

Table 1 Summary of EphA2-overexpressing MCF-10A cells

The subcellular localization and P-Tyr content of EphA2 in control (vector) and EphA2-overexpressing MCF-10A cells are summarized. Also shown is a summary of the behaviors of the two cell types as measured in the presence or absence of soluble ligand (0.5 μ g/ml EA1).

	Subcellular localization	P-Tyr content	Soft agar colonization	Behavior in 3dRBM ^a
Vector	Cell-cell contacts	High	Negative	Benign
EphA2	Membrane ruffles	Low	High	Aggressive (stellate)
EphA2+EA1	Membrane ruffles	High	Low	Benign

^a 3dRBM, 3-dimensional reconstituted basement membrane.

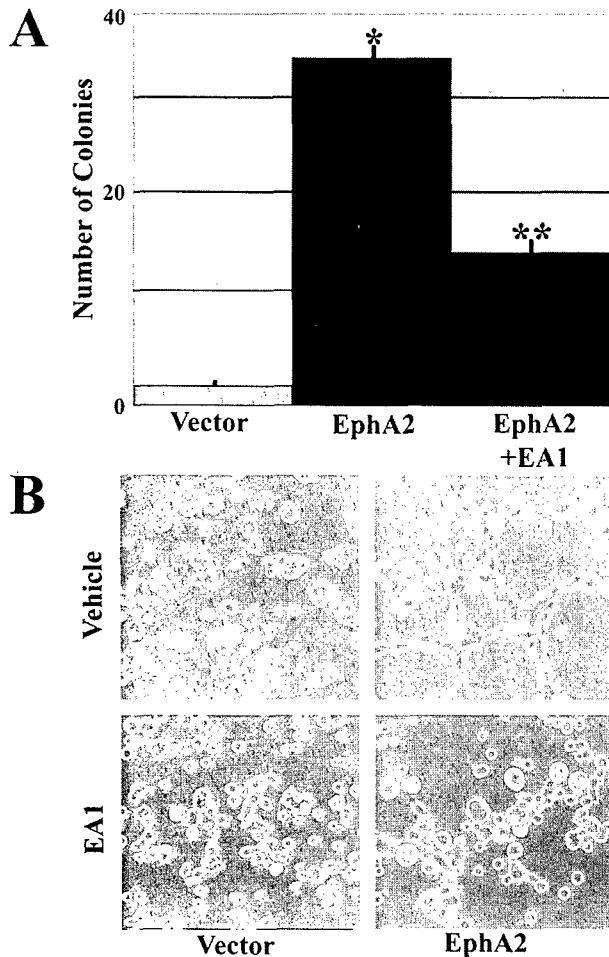


Fig. 3. EphA2 overexpression induces malignant transformation but is reversed by ligand binding. **A**, to measure anchorage-independent cell growth and survival, 1×10^4 vector- or EphA2-transfected MCF-10A cells were suspended in soft agar in the presence or absence of 0.5 $\mu\text{g/ml}$ EA1. After 7 days, colony formation was scored microscopically, and clusters containing at least 3 cells were defined as a positive colony. MCF^{EphA2} cells demonstrated significant increases in anchorage-independent growth (*, $P < 4 \times 10^{-7}$), whereas EA1 treatment significantly blocks the growth of MCF^{EphA2} cells (**, $P < 5 \times 10^{-6}$). **B**, the phenotype of control and EphA2-transformed MCF-10A cells was evaluated after incubation atop polymerized Matrigel \pm 0.5 $\mu\text{g/ml}$ EA1 (bottom panels) or an appropriately matched vehicle (PBS; top panels). Whereas control MCF-10A cells were organized into spherical colonies, MCF^{EphA2} cells displayed a stellate growth pattern in Matrigel that mimicked the behavior of aggressive breast cancer cells (MDA-MB-231; data not shown). Note that treatment with 0.5 $\mu\text{g/ml}$ EA1 caused the phenotype of MCF^{EphA2} cells to be indistinguishable from that of control MCF-10A cells.

but did not breach the vessel wall (Fig. 4D). Immunohistochemical staining with cytokeratin antibodies confirmed the epithelial nature of the emboli, and a lack of anti-factor VIII-related antigen immunoreactivity revealed that the thrombus did not represent an abnormal or atypical outgrowth of endothelial cells (data not shown). No pulmonary emboli were observed in mice that had been injected with control MCF-10A cells (Fig. 4E).

DISCUSSION

The major finding of this study is that the EphA2 tyrosine kinase is overexpressed in many clinical specimens and cell models of breast cancer. We have also shown that EphA2 overexpression is sufficient to induce malignant transformation of nontransformed epithelial cells. Importantly, EphA2 overexpression destabilizes cell-cell contacts and thereby prevents EphA2 from interacting with its ligands, which are anchored to the membrane of adjacent cells. This defect in ligand-mediated stimulation of EphA2 is important because we show that

ligand binding reverses the malignant phenotype of EphA2-overexpressing cells.

Consistent results with several cell models suggest that elevated levels of EphA2 are relevant to breast cancer. High levels of EphA2 are found in a large number of clinical specimens and aggressive cell models of breast cancer. Recent studies reveal that high levels of EphA2 may also be found in advanced melanoma (20), colon cancer (21), and prostate cancer (12). The fact that elevated EphA2 levels are found on multiple types of cancer suggests that EphA2 overexpression may be a common event in the metastatic progression of carcinoma cells.

Our results provide the first evidence that EphA2 is not merely a marker but an active participant in tumorigenesis. EphA2-overexpressing MCF-10A cells displayed the hallmarks of malignant transformation as defined *in vitro* and *in vivo*. EphA2-transformed MCF-10A cells formed tumors *in vivo* at a high frequency, which is remarkable given that other oncogenes (*e.g.*, Ras, HER2, and TC21) are insufficient to convey tumorigenic potential on MCF-10A cells (13, 14). Thus, we suggest that EphA2 overexpression may be particularly relevant to breast cancer.

EphA2 overexpression causes defects in cell-cell contacts that are characteristic of aggressive cancer cells. EphA2 weakens cell-cell contacts and thereby prevents EphA2 from interacting with its ligands, which are anchored to the surface of neighboring cells. Consistent with this, the highest levels of EphA2 are consistently found on tumor-derived breast cell lines that have weak cell-cell contacts (10, 16). Moreover, the EphA2 in these aggressive cancer cells is not tyrosine phosphorylated (10). One possible explanation for the weakened cell-cell adhesions is that overexpressed EphA2 may phosphorylate adhesion or cytoskeletal proteins and thereby destabilize cell-cell adhesions. Consistent with this, elevated levels of protein tyrosine phosphorylation have been shown to destabilize cell-cell adhesions (7, 22). Further support is provided by evidence that EphA2 interacts with important adhesion and cytoskeletal proteins, including E-cadherin, Src-like adapter protein, and phosphatidylinositol 3'-kinase (10, 18, 23). Another possibility is that EphA2 alters the expression of important adhesion molecules. Future studies will be needed to identify the molecular targets of EphA2 in malignant cells.

The weakened cell-cell adhesions of EphA2-overexpressing cells are notable because EphA2 binds a membrane-anchored ligand. We have recently shown that EphA2 in nontransformed epithelia is enriched within sites of cell-cell contact, where it interacts with ligand and becomes tyrosine phosphorylated (10). We demonstrate here that EphA2 overexpression causes EphA2 to become diffusely distributed. Consequently, the overexpressed EphA2 fails to interact with ligand and become tyrosine phosphorylated. Interestingly, EphA2 immunoreactivity in EphA2-overexpressing cells and in clinical specimens of breast cancer was similarly diffuse and cytoplasmic (see Fig. 1A). The cytoplasmic localization of EphA2 contrasts with its known localization within sites of cell-cell contact between nontransformed epithelial cells (9). These results lead us to postulate that the levels of EphA2 protein influence its subcellular localization and thereby regulate ligand binding.

EphA2 overexpression causes malignant transformation and decreases ligand binding. These properties appear to be directly linked because EphA2 stimulation by soluble ligands reverses the malignant behavior of EphA2-transformed cells. Ligand-mediated tyrosine phosphorylation of EphA2 also decreases the growth and invasiveness of malignant breast and prostate cancer cells (10, 18). Thus, whereas ligand binding inhibits tumor cell growth, EphA2 overexpression causes malignant transformation and tumorigenesis. Taken together, these results indicate that the expression levels and ligand binding

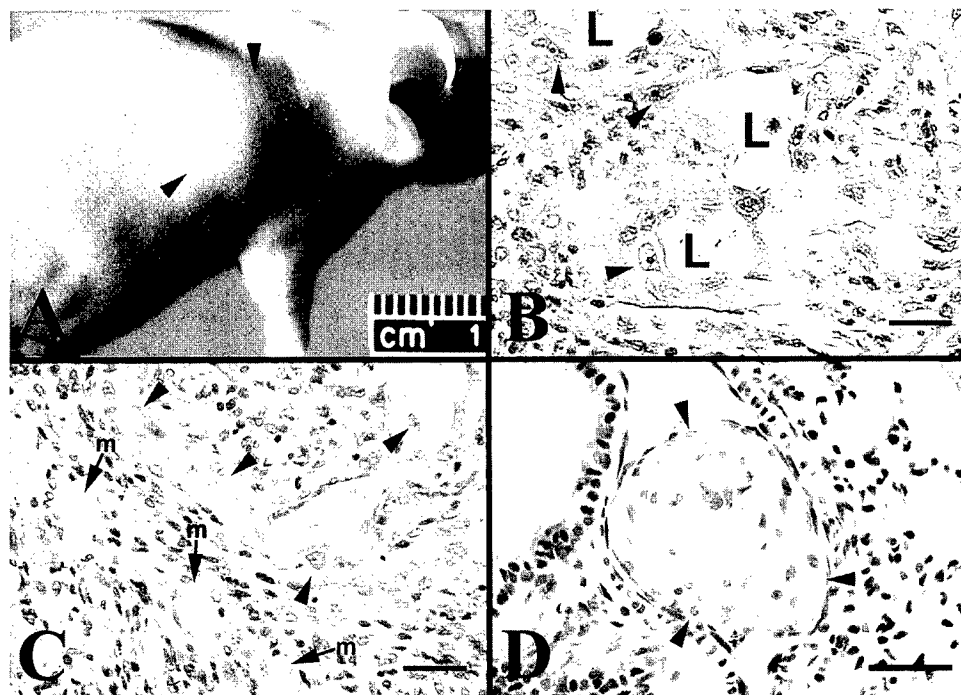


Fig. 4. EphA2 overexpression conveys tumorigenic potential. A–C, MCF^{EphA2} cells were implanted s.c. into the right cranio-lateral thorax (axilla) of athymic (*nu/nu*) mice. A, within 4 days, the implanted cells formed palpable masses (arrowheads). B, the histological appearance of the tumor revealed that these masses were almost entirely composed of moderately differentiated and invasive tumor cells (arrowheads) that formed dysplastic tubules with fluid-filled lumens (L). C, neoplastic cells (arrowheads) invaded adjacent skeletal muscle fibers (m). D, MCF^{EphA2} cells injected i.v. into the tail vein of athymic mice formed emboli in the lung within large- and medium-sized vessels (arrowheads). Histological examination of pulmonary tumor thrombi in athymic mice revealed that tumor cells partially to totally obstructed intravascular spaces but did not invade the vessel wall. Bar, 40 μ m. E, tumorigenesis by EphA2-transformed MCF-10A cells (or vector-transfected controls) was evaluated after s.c. or tail vein injection. The significance of tumor formation was estimated to be $P < 1.3 \times 10^{-7}$ as determined by χ^2 analyses.

Cell	Site of Inoculation	# of Cells Injected	Incidence of Tumorigenicity	Tumor Volume (mm ³)
Control	Subcutaneous	1×10^6	0/9	NA
EphA2	Subcutaneous	1×10^6	9/9	66 \pm 20
Control	Subcutaneous	5×10^6	0/4	NA
EphA2	Subcutaneous	5×10^6	10/10	293 \pm 70
Control	Tail vein	1×10^6	0/4	
EphA2	Tail vein	1×10^6	2/4	

properties work together to allow EphA2 to differentially regulate tumor cell growth and invasiveness.

EphA2 overexpression may cause malignant transformation by regulating cell contact with the ECM. In contrast to evidence that ligand-mediated stimulation of EphA2 blocks ECM attachments (10, 18), ECM adhesions are increased in EphA2-transformed MCF-10A cells relative to nontransformed epithelial cells.⁴ Many different lines of investigation have shown that ECM adhesions provide linkages and signals that promote cell growth, migration, and survival (6, 24, 25). The molecular basis by which EphA2 regulates ECM adhesions remains largely unknown. However, EphA2 has been shown to interact with a variety of cytoskeletal and signaling proteins, including phosphatidylinositol 3'-kinase, FAK, SHP-2, and a Src-like adapter protein (18, 23, 26). These protein interactions are intriguing because

each of the associated proteins has been independently found to regulate cell growth or ECM adhesion (24, 27, 28).

Overexpressed receptor tyrosine kinases can facilitate new and efficacious modalities for targeted intervention against cancer cells (2). A recent success arose from antibody targeting of HER2, a receptor tyrosine kinase that is overexpressed on some breast cancer cells (2). Unfortunately, HER2 overexpression is limited to one-third of breast carcinomas and is sporadic on other tumor types, which underscores the need for new targets. Our results suggest that EphA2 might provide a target for intervention against aggressive breast cancers. At minimum, EphA2 overexpression may identify a larger or different set of tumors than HER2. Strong EphA2 immunoreactivity was detected in 5 of 12 (~40%) breast cancer specimens, whereas strong HER2 immunoreactivity was limited to 2 of 12 samples (data not shown). Our evidence suggests that strategies that restore or mimic the effects of ligand could negatively regulate tumor cell

⁴ D. P. Zelinski and M. S. Kinch, unpublished results.

growth and invasiveness (10, 18). This latter approach would redirect the function of an overexpressed oncoprotein so that it blocks tumor cell growth and invasiveness.

ACKNOWLEDGMENTS

We thank Drs. B. Wang, T. Hunter, R. Lindberg, and B. J. Kerns for their generosity in providing reagents; Drs. D. Waters and M. Nichols for expert technical assistance; and Drs. R. Brackenbury and M. Chaiken for advice and critical reading of the manuscript.

REFERENCES

- Dickson, R. B., and Lippman, M. E. Growth factors in breast cancer. *Endocr. Rev.*, **16**: 559–589, 1995.
- Weiner, L. M. Monoclonal antibody therapy of cancer. *Semin. Oncol.*, **26**: 43–51, 1999.
- Fidler, I. J. Molecular biology of cancer: invasion and metastasis. In: V. T. Devita, S. Hellman, and S. A. Rosenberg (eds.), *Cancer: Principles and Practice of Oncology*, pp. 135–152. Philadelphia: Lippincott-Raven, 1997.
- Steeg, P. S., Clare, S. E., Lawrence, J. A., and Zhou, Q. Molecular analysis of premalignant and carcinoma in situ lesions of the human breast. *Am. J. Pathol.*, **149**: 733–738, 1996.
- Birchmeier, W. E-cadherin as a tumor (invasion) suppressor gene. *Bioessays*, **17**: 97–99, 1995.
- Ruoslahti, E. Cell adhesion and tumor metastasis. *Princess Takamatsu Symp.*, **24**: 99–105, 1994.
- Kinch, M. S., Clark, G. J., Der, C. J., and Burridge, K. Tyrosine phosphorylation regulates the adhesions of ras-transformed breast epithelia. *J. Cell Biol.*, **130**: 461–471, 1995.
- Kinch, M. S., Kilpatrick, K., and Zhong, C. Identification of tyrosine phosphorylated adhesion proteins in human cancer cells. *Hybridoma*, **17**: 227–235, 1998.
- Lindberg, R. A., and Hunter, T. cDNA cloning and characterization of eck, an epithelial cell receptor protein-tyrosine kinase in the eph/ek family of protein kinases. *Mol. Cell. Biol.*, **10**: 6316–6324, 1990.
- Zantek, N. D., Azimi, M., Fedor-Chaiken, M., Wang, B., Brackenbury, R., and Kinch, M. S. E-cadherin regulates the function of the EphA2 receptor tyrosine kinase. *Cell Growth Differ.*, **10**: 629–638, 1999.
- Bartley, T. D., Hunt, R. W., Welcher, A. A., Boyle, W. J., Parker, V. P., Lindberg, R. A., Lu, H. S., Colombero, A. M., Elliott, R. L., Guthrie, B. A., *et al.* B61 is a ligand for the ECK receptor protein-tyrosine kinase. *Nature (Lond.)*, **368**: 558–560, 1994.
- Walker-Daniels, J., Coffman, K., Azimi, M., Rhim, J. S., Bostwick, D. G., Snyder, P., Kerns, B. J., Waters, D. J., and Kinch, M. S. Overexpression of the EphA2 tyrosine kinase in prostate cancer. *Prostate*, **41**: 275–280, 1999.
- Clark, G. J., Kinch, M. S., Gilmer, T. M., Burridge, K., and Der, C. J. Overexpression of the Ras-related TC21/R-Ras2 protein may contribute to the development of human breast cancers. *Oncogene*, **12**: 169–176, 1996.
- Giunciuglio, D., Culty, M., Fassina, G., Masiello, L., Melchiori, A., Pagliarunga, Arand, G., Ciardiello, F., Basolo, F., and Thompson, E. W. Invasive phenotype of MCF10A cells overexpressing c-Ha-ras and c-erbB-2 oncogenes. *Int. J. Cancer*, **63**: 815–822, 1995.
- Pauley, R. J., Soule, H. D., Tait, L., Miller, F. R., Wolman, S. R., Dawson, P. J., and Heppner, G. H. The MCF10 family of spontaneously immortalized human breast epithelial cell lines: models of neoplastic progression. *Eur. J. Cancer Prev.*, **2** (Suppl. 3): 67–76, 1993.
- Bae, S. N., Arand, G., Azzam, H., Pavasant, P., Torri, J., Frandsen, T. L., and Thompson, E. W. Molecular and cellular analysis of basement membrane invasion by human breast cancer cells in Matrigel-based *in vitro* assays. *Breast Cancer Res. Treat.*, **24**: 241–255, 1993.
- Davis, S., Gale, N. W., Aldrich, T. H., Maisonpierre, P. C., Lhotak, V., Pawson, T., Goldfarb, M., and Yancopoulos, G. D. Ligands for EPH-related receptor tyrosine kinases that require membrane attachment or clustering for activity. *Science (Washington DC)*, **266**: 816–819, 1994.
- Miao, H., Burnett, E., Kinch, M. S., Simon, E., and Wang, B. EphA2 kinase associates with focal adhesion kinase and upon activation, inhibits integrin-mediated cell adhesion and migration. *Nature Cell Biol.*, **2**: 62–69, 2000.
- Weaver, V. M., Howlett, A. R., Langton-Webster, B., Petersen, O. W., and Bissell, M. J. The development of a functionally relevant cell culture model of progressive human breast cancer. *Semin. Cancer Biol.*, **6**: 175–184, 1995.
- Easty, D. J., Herlyn, M., and Bennett, D. C. Abnormal protein tyrosine kinase gene expression during melanoma progression and metastasis. *Int. J. Cancer*, **60**: 129–136, 1995.
- Rosenberg, I. M., Goke, M., Kanai, M., Reinecker, H. C., and Podolsky, D. K. Epithelial cell kinase B61: an autocrine loop modulating intestinal epithelial migration and barrier function. *Am. J. Physiol.*, **273**: G824–G832, 1997.
- Volberg, T., Zick, Y., Dror, R., Sabanay, I., Gilon, C., Levitzki, A., and Geiger, B. The effect of tyrosine-specific protein phosphorylation on the assembly of adherens-type junctions. *EMBO J.*, **11**: 1733–1742, 1992.
- Pandey, A., Duan, H., and Dixit, V. M. Characterization of a novel src-like adapter protein that associates with the Eck receptor tyrosine kinase. *J. Biol. Chem.*, **270**: 19201–19204, 1995.
- Keely, P., Parise, L., and Juliano, R. Integrins, and GTPases in tumour cell growth, motility and invasion. *Trends Cell Biol.*, **8**: 101–106, 1998.
- Frisch, S. M., and Ruoslahti, E. Integrins and anoikis. *Curr. Opin. Cell Biol.*, **9**: 701–706, 1997.
- Pandey, A., Lazar, D. F., Saltiel, A. R., and Dixit, V. M. Activation of the Eck receptor protein tyrosine kinase stimulates phosphatidylinositol 3-kinase activity. *J. Biol. Chem.*, **269**: 30154–30157, 1994.
- Roche, S., Alonso, G., Kazlauskas, A., Dixit, V. M., Courtneidge, S. A., and Pandey, A. Src-like adaptor protein (SLAP) is a negative regulator of mitogenesis. *Curr. Biol.*, **8**: 975–978, 1998.
- Takeda, H., Matozaki, T., Fujioka, Y., Takada, T., Noguchi, T., Yamao, T., Tsuda, M., Ochi, F., Fukunaga, K., Narumiya, S., Yamamoto, T., and Kasuga, M. Lyso-phosphatidic acid-induced association of SHP-2 with SHPS-1: roles of RHO, FAK, and a SRC family kinase. *Oncogene*, **16**: 3019–3027, 1998.

In Preparation

Unpublished

ECM Attachments Decrease Epithelial Cell-Cell Adhesions

Daniel P. Zelinski and Michael S. Kinch
Department of Basic Medical Sciences
Purdue University Cancer Center
West Lafayette, IN 47907-1246

Address Correspondence to:
Michael S. Kinch
Purdue Cancer Center
1246 Lynn Hall
West Lafayette, IN 47907-1246
765 496-2372
kinch@purdue.edu

ABSTRACT

A continuous exchange of information takes place between epithelial cells and their surrounding tissue environment. This communication governs many aspects of cell behavior and changes in this communication are frequently associated with oncogenesis. Recent studies have linked oncogenic tyrosine kinases with the regulation of epithelial cell adhesion to the surrounding microenvironment. The EphA2 tyrosine kinase is overexpressed in a large number of aggressive cancers and overexpressed EphA2 functions as a powerful oncoprotein. In the present study, we show that EphA2 overexpression alters a fine balance of cell-cell and cell-ECM adhesions in epithelial cells. EphA2-overexpressing cells have increased ECM attachments, which prevent E-cadherin-mediated cell-cell adhesions. These changes in cellular adhesion result from increased production of the ECM protein fibronectin. In addition, exposure of non-transformed epithelial cells to fibronectin elicits changes in cell adhesion and EphA2 that are reminiscent of metastatic carcinoma cells. These findings have important implications for understanding how alterations in communication with the environment can regulate cell behavior.

INTRODUCTION

An important concept in cancer research is that the local microenvironment regulates malignant progression {Weaver & Bissell 1999 ID: 2411}{Hayward, Grossfeld, et al. 1998 ID: 2561}. The microenvironment includes insoluble extracellular matrix (ECM), stromal cells, and soluble factors (*e.g.*, growth factors), which combine to provide signals and structural cues that govern cell growth, survival and differentiation {Ruoslahti 1999 ID: 2227}{Clark, King, et al. 1998 ID: CLARK1998}{Hagios, Lochter, et al. 1998 ID: 2591}. The composition and organization of the microenvironment is constantly renewed by continuous production and post-translational modifications of ECM proteins {Werb & Chin 1998 ID: 2590}{McCawley & Matrisian 2000 ID: 2503}. This plasticity is relevant to cancer because malignant cells often have altered expression of growth factors, ECM components and extracellular proteases and the resulting changes to the local microenvironment have important roles in regulating malignant behavior {Lawrence & Steeg 1996 ID: 2279}{Radinsky & Fidler 1992 ID: 2527}{McCawley & Matrisian 2000 ID: 2503}{Fidler 1995 ID: 2521}.

Cellular adhesions are frequently altered in malignant cells {Zetter 1993 ID: 2570}{Ruoslahti 1999 ID: 2227}{Takeichi 1993 ID: 954}. Cellular adhesions can be broadly divided into either cell-cell or cell-ECM contacts, and these two types of adhesions are dynamic and coordinately regulated in epithelial cells {Yamada & Geiger 1997 ID: 763}. In benign epithelial cells, stable cell-cell

contacts predominate over ECM adhesions {Kinch & Burridge 1995 ID: 2}. E-cadherin attachments, the primary cell-cell adhesion interactions in epithelial cells, are stabilized by cytoplasmic catenin molecules, which link E-cadherin to the actin cytoskeleton {Geiger & Ayalon 1992 ID: GEIGER1992}{Gumbiner 2000 ID: 2537}. In contrast, malignant epithelial cells generally have weakened cell-cell contacts and increased integrin attachments to ECM components {Kinch, Clark, et al. 1995 ID: 4}{Ruoslahti 1994 ID: 1245}. In particular, tumor cell binding to fibronectin has been implicated in metastatic progression {Ruoslahti 1999 ID: 2227}. Fibronectin is a extracellular matrix glycoprotein that has been linked to certain aggressive cancer and inhibitors of fibronectin have been shown to decrease metastatic invasiveness {Ruoslahti 1999 ID: 2227}{Akiyama 1996 ID: 1092}{Livant, Pienta, et al. 2000 ID: 2559}.

Changes in the balance between cell-cell and cell-ECM adhesions can impact metastatic cell behavior in a variety of ways. In benign cells, cell-cell contacts supply physical constraints and signals that negatively regulate cell growth and migration {Takeichi 1993 ID: 954}{Birchmeier 1995 ID: 338}{Fagotto & Gumbiner 1996 ID: 2540}. In contrast, ECM attachments provide structural cues and signals that promote cell growth, migration and survival {Frisch & Ruoslahti 1997 ID: 969}{Ruoslahti 1999 ID: 2227}{Keely, Parise, et al. 1998 ID: KEELY1998}{Howlett, Bailey, et al. 1995 ID: 256}{Schwartz & Ingber 1994 ID: 542}. Consequently, an altered balance of cell-cell and ECM adhesions can actively promote malignant behavior. For example, altered cellular adhesions allow metastatic cells to detach from the primary tumor and disseminate throughout the body {Akiyama, Olden, et al. 1995 ID: 533}{Ruoslahti 1999 ID: 2227}{Keely, Parise, et al. 1998 ID: KEELY1998}.

Many lines of investigation have demonstrated increased expression or function of tyrosine kinases in metastatic cells {Hunter 1997 ID: 2294}{Cance & Liu 1995 ID: 738}{Press, Pike, et al. 1994 ID: PRESS1994}. Interestingly, most tyrosine phosphorylated proteins are concentrated within sites of cell-cell or cell-ECM adhesion {Maher, Pasquale, et al. 1985 ID: 227}{Kinch, Kilpatrick, et al. 1998 ID: 938}. Indeed, increased tyrosine kinase activity destabilizes epithelial cell-cell adhesions and promotes ECM contacts. Conversely, treatment of malignant cells with tyrosine kinase inhibitors can restore a normal balance of cellular adhesions {Kinch, Clark, et al. 1995 ID: 4}{Volberg, Geiger, et al. 1991 ID: 135}. However, the identity of the tyrosine kinases that are responsible for these changes and the mechanisms by which they regulate the balance of cell-cell and cell-ECM adhesions have remained largely unclear.

Recent studies in our laboratory have sought to identify tyrosine kinases that regulate cellular adhesions in malignant cells {Kinch, Clark, et al. 1995 ID: 4}{Kinch, Kilpatrick, et al. 1998 ID: 938}. Much of our recent effort has focussed on one particular receptor tyrosine kinase, EphA2, which is overexpressed in a large number of aggressive carcinomas {Walker-Daniels, Coffman, et al. 1999 ID: 2202}{Zantek, Azimi, et al. 1999 ID: 2203}{Zelinski, Zantek, et al. 2001 ID:

ZANTEK1999}{Rosenberg, Goke, et al. 1997 ID: 851}{Hess A.R., Seftor, et al. 2001 ID: 2509}{Ogawa, Pasqualini, et al. 2000 ID: 2585}. We recently showed that overexpressed EphA2 functions as a powerful oncoprotein {Zelinski, Zantek, et al. 2001 ID: ZANTEK1999}. In the present study, we demonstrate that EphA2 overexpression alters the balance of cell-cell and cell-ECM adhesions in epithelial cells. We also show that EphA2-transformed cells overexpress fibronectin and that fibronectin is necessary and sufficient to elicit changes in cellular adhesions and EphA2 that are characteristic of aggressive carcinoma cells.

METHODS

Cell Culture and Antibodies. All cells were cultured as described previously {Zelinski, Zantek, et al. 2001 ID: ZANTEK1999}. In some experiments, tissue culture dishes were pre-incubated overnight at 4°C in PBS supplemented with 1% Matrigel (Collaborative, Bedford, MA), 100µg/mL of fibronectin (Sigma Chemical Co., St. Louis, MO), or vitronectin (from 5% horse serum) (GibcoBRL).

The EphA2 monoclonal antibody (D7) was generated in our laboratory or purchased from Upstate Biologicals, Inc. (Lake Placid, NY). Antibodies specific for E-cadherin, α -catenin, β -catenin, γ -catenin, phosphotyrosine and fibronectin were purchased from Transduction Laboratories (Lexington, KY). Antibodies specific for P-Tyr (4G10) were purchased from Upstate Biologicals, Inc. Antibodies specific for $\alpha 5$ and $\beta 1$ integrins were purchased from Developmental Studies Hybridoma Bank (Iowa City, IA) and were used as recommended {Howlett, Bailey, et al. 1995 ID: 256}{Huhtala, Humphries, et al. 1995 ID: 537}. Rabbit anti-E-cadherin antibodies were generously provided by Dr. R. Brackenbury (Univ. Cincinnati). Paxillin antibodies were generously provided by Dr. K. Burridge (Univ. North Carolina).

Western Blot Analysis and Immunoprecipitation. Western blot analyses were performed as described previously {Zantek, Azimi, et al. 1999 ID: 2203}{Zelinski, Zantek, et al. 2001 ID: ZANTEK1999} and antibody binding was detected by enhanced chemiluminescence (Pierce, Rockford, IL) and autoradiography (Kodak X-OMAT; Kodak, Rochester, NY). Band intensity was measured using the Kodak Image Station 440 (Kodak, Rochester, NY). To confirm equal sample loading, the blots were reprobed with antibodies specific for β -catenin. To determine statistical significance, at least three independent experiments were analyzed using a Student's t-test, defining $p < 0.05$ as significant.

Immunofluorescence and Phase-Contrast Microscopy. MCF-10A cells were incubated on glass coverslips overnight at 37°C. The samples were then fixed

with 3.7% formaldehyde solution (Sigma, St. Louis, MO) and permeabilized with 0.5% Triton X-100 as described {Zantek, Azimi, et al. 1999 ID: 2203}. After incubation with antibodies specific for paxillin or E-cadherin, the samples were labeled with rhodamine-conjugated donkey anti-mouse IgG (Chemicon, Temecula, CA). The coverslips were viewed using an Olympus BX-60 epifluorescence microscope outfitted with the appropriate filters and images were recorded onto T-Max 400 professional film (Kodak, Rochester, NY). For phase-contrast microscopy, viable cell cultures were observed using an Olympus IX-70 microscope and images were recorded onto 35 mm professional film as detailed above.

Cell Adhesion Assays. For cell-cell adhesion assays, two distinct assays were employed. In 'monolayer scrape' assays, cells were detached from tissue culture-treated plates using a cell scraper. The average colony size of suspended aggregates was determined using high-power, phase-contrast microscopy (an Olympus BK2 outfitted with a 40x objective). As a second assay of cell-cell adhesions (hanging drop assays), cells were detached from tissue cultures dish using Versene and separated into individual cells by vigorous agitation. The samples were then incubated in suspension for 60 minutes at 37°C before calculating the average size of cell aggregates, which determined using high power light microscopy (40X objective). To calculate the average size of cell-cell aggregates, the number of particles (defined as clusters containing one or more cells) was divided by the total number of cells as described previously {Kinch 1999 ID: KINCH1999}.

For substrate attachment assays, MCF-10Aneo and MCF^{EphA2} cells were suspended using PBS supplemented with 4.5mM EDTA. To measure cell attachment, 5×10^5 cells were suspended in media and plated into 35-mm tissue culture dishes for 30 min at 37°C and 5% CO₂. Weakly adherent cells were detached by three vigorous washes, and the remaining adherent cells were suspended with trypsin and counted using a hemacytometer. The average number of cells attached from at least four separate experiments is reported. For assays on dishes coated with horse serum, matrigel or fibronectin, cells were continuously incubated in the presence of 25µg/ml cycloheximide or a matched vehicle (PBS) beginning 60 min prior to suspension. Additionally, cells were suspended in serum free media prior to plating. For experiments with integrin antibodies, the culture media was supplemented with 1% $\alpha 5$ or $\beta 1$ integrin ascites or 10-20% $\alpha 5$ or $\beta 1$ integrin hybridoma supernatant. When necessary, integrin ascites or supernatant was replenished every 24 hours with fresh media. Additional analysis with a non-reactive hybridoma supernatant was included as an isotype-matched control.

To determine statistical significance, all cell adhesion analyses were assessed in at least three independent experiments and were analyzed using a Student's t-test, defining $p < 0.05$ as significant.

RESULTS

EphA2 Regulates the Balance of Cell-Cell and Cell-ECM Adhesions.

Biochemical and microscopic evaluation of non-transformed and EphA2-transformed (MCF^{EphA2}) MCF-10A cells revealed differences in EphA2-ligand binding that related to altered cell morphology. We evaluated ligand binding by immunoprecipitating EphA2 and subjecting this material to Western blot analysis with phosphotyrosine-specific antibodies. Despite its overexpression, the EphA2 in MCF^{EphA2} cells had reduced phosphotyrosine content as compared to the EphA2 in non-transformed controls (Fig. 1A). The decreased tyrosine phosphorylation of EphA2 related to decreased cell-cell adhesions (Fig. 1B). Microscopic evaluation revealed that non-transformed MCF-10A cells displayed a characteristic epithelial morphology and organized into stable multicellular colonies, even when cultured at low cell density. In contrast, EphA2-transformed cells adopted a mesenchymal morphology and appeared to resist cell-cell contacts, even when cultured at high cell density. Based on these differences, we performed objective measures of cell-cell adhesion, which confirmed that the reduced EphA2 phosphotyrosine content and mesenchymal morphology of MCF^{EphA2} cells were indicative of weakened cell-cell contacts (Fig. 1C). Following suspension, non-transformed MCF-10A cells were found in clusters of greater than 4.5 cells, whereas EphA2 cells failed to interact with one-another and instead were predominantly observed as individual cells ($P < 0.0002$). Hanging drop assays of cell-cell adhesion also confirmed the reduced cell-cell contacts of EphA2-transformed MCF-10A cells (data not shown).

Consistent with the inability of MCF^{EphA2} cells to form stable cell-cell contacts, immunofluorescence microscopy revealed prominent differences in E-cadherin subcellular localization (Fig. 2A). In non-transformed controls, E-cadherin localized to sites of cell-cell contact. Western blot analysis revealed that the inability to detect E-cadherin within intercellular junctions did not reflect decreased E-cadherin expression and these results were confirmed using different E-cadherin-specific antibodies (Fig. 2B and data not shown). Similarly, we did not detect any differences in the expression, cadherin binding or phosphotyrosine content of E-cadherin or catenin molecules (Fig. 2C and data not shown). Thus, EphA2 overexpression appears to destabilize cell-cell adhesions independent of changes in E-cadherin binding to cytoplasmic catenins.

EphA2 Overexpression Increases ECM Attachments and Fibronectin Levels.

We recently put forth a hypothesis that cell-cell and cell-ECM adhesions are coordinately and inversely regulated in epithelial cells {Kinch & Burridge 1995 ID: 2}. Given our inability to detect differences in E-cadherin, we postulated that EphA2 overexpression might destabilize cell-cell adhesions by increasing ECM attachments. Initial support for this hypothesis was obtained by comparing

the matrix attachments of control and transformed MCF-10A cells to plastic culture dishes. Cell detachment assays revealed a 24-fold increase in the ability of EphA2-transformed cells to adhere to underlying supports (tissue culture-treated plastic) as compared to non-transformed controls ($P < 3 \times 10^{-4}$) (Fig. 3A). Immunostaining with paxillin antibodies confirmed that the MCF^{EphA2} cells displayed larger and more numerous focal adhesions than matched controls (Fig. 3B). In non-transformed MCF-10A cells, small focal adhesions were restricted to the free edges (lacking cell-cell contact) of cell colonies whereas large focal adhesions were dispersed all throughout MCF^{EphA2} cells, regardless of cell-cell contacts.

The increased attachment of MCF^{EphA2} cells to underlying plastic supports required *de novo* synthesis of an adhesive substrate. Based on evidence that cells continually synthesize ECM substrates {Pavalko, Schneider, et al. 1995 ID: 50}, we asked if the increased substratum attachments of MCF^{EphA2} cells required new protein synthesis. Treatment with cycloheximide prevented virtually all substratum attachment by MCF^{EphA2} cells (Fig. 3A). However, cycloheximide-treated MCF^{EphA2} cells retained the ability to adhere to supports that had been coated with exogenous sources of ECM, such as purified fibronectin or Matrigel (laminin and collagen IV). Thus, protein synthesis was not necessary for the binding of integrins on MCF^{EphA2} cells to their adhesive substrates. Instead, we postulated that the increased substrate attachments indicated that EphA2-overexpressing cells were producing an adhesive substrate that was not expressed in non-transformed controls. Recent reports have linked fibronectin to tumor cell invasiveness {Ruoslahti 1999 ID: 2227}{Livant, Pienta, et al. 2000 ID: 2559}. Thus, we measured fibronectin protein levels in control and MCF^{EphA2} cells by western blot analyses of whole cell lysates (Figure 4). Immunoblotting revealed a dramatic increase (>30-fold) in fibronectin levels in EphA2-transformed MCF-10A cells relative to non-transformed MCF-10A cells. The membranes were subsequently re-probed with antibodies specific for β -catenin to confirm that the elevated fibronectin levels did not represent differences in sample loading.

Fibronectin Alters the Balance of Cellular Adhesions in Transformed Cells

We then asked if fibronectin binding was necessary for the altered cellular adhesions of MCF^{EphA2} cells. To test this, EphA2-overexpressing cells were incubated in the presence of monoclonal antibodies that inhibit $\alpha_5\beta_1$ integrin, the primary fibronectin receptor {Howlett, Bailey, et al. 1995 ID: 256}. Integrin antibodies efficiently blocked the attachments of MCF^{EphA2} cells to underlying supports. α_5 antibodies decreased substrate attachments by at least 60%, β_1 integrin antibodies reduced substrate attachments by at least 80%, while the combination of α_5 and β_1 integrin antibodies reduced substrate attachment by at least 95% (Fig. 5A). In contrast, integrin antibodies increased the size of cell colonies formed by MCF^{EphA2} cells. The average colony size of MCF^{EphA2} cells that had been treated with α_5 integrin antibodies increased by at least three-fold as

compared with matched controls ($P < 0.0005$). β_1 integrin antibodies or the combination of α_5 and β_1 integrin antibodies increased the average colony size of MCF^{EphA2} cells by at least 7 and 10-fold, respectively ($P < 0.004$ and $P < 0.00005$, respectively). Thus, cell attachment to fibronectin was necessary for the altered balance of cell-cell and cell-ECM adhesions in EphA2-transformed MCF-10A cells.

Fibronectin Alters the Adhesions of Non-Transformed Epithelial Cells.

Since integrin antibodies increase cell-cell contacts by transformed cells, we then asked whether fibronectin would decrease cell-cell contacts by non-transformed cells. We tested this by culturing non-transformed MCF-10A cells onto supports that had been coated with either purified fibronectin or Matrigel (as a negative control). Cells on Matrigel retained an epithelial morphology, with E-cadherin enriched within sites of cell-cell contact (Fig. 6A). Paxillin staining revealed that cells on Matrigel had few focal adhesions that were restricted to unoccupied edges (lacking cell-cell contact). In contrast, cells plated onto fibronectin adopted a mesenchymal appearance that persisted for at least 72 hours. E-cadherin largely failed to localize within sites of cell-cell contact and paxillin staining revealed larger and more numerous focal adhesions all throughout the cells (Fig. 6A), which was consistent with their efficient adhesion to fibronectin (See Fig. 3A). Analyses of cell-cell adhesion revealed that fibronectin reduced cell-cell contacts by at least 60% as compared to Matrigel-treated controls (Fig. 6B). Fibronectin similarly decreased cell-cell contacts as measured using hanging-drop analyses (not shown), which indicates that fibronectin inhibits cell-cell adhesion independent of cell spreading. Thus, consistent results with EphA2-transformed and fibronectin-treated MCF-10A cells indicate that fibronectin binding is necessary and sufficient for the altered balance of adhesions that characterize malignant epithelial cells.

Recent studies by our laboratory have shown that the binding of EphA2 to its cell-attached ligands requires stable E-cadherin-mediated cell-cell adhesions {Zantek, Azimi, et al. 1999 ID: 2203}. Since exposure to fibronectin decreased cell-cell adhesions, we asked whether fibronectin would alter EphA2-ligand binding. We evaluated ligand binding by measuring the phosphotyrosine content of immunoprecipitated EphA2. Consistent with their stable cell-cell contacts, the EphA2 from cells on Matrigel was tyrosine phosphorylated (Fig. 6D). However, the EphA2 from cells on fibronectin displayed reduced phosphotyrosine content. The reduced phosphotyrosine content was even more dramatic given that EphA2 was overexpressed by at least xx-fold on fibronectin-treated cells (Fig. 6C and data not shown). Altogether, these results indicate that exposure of non-transformed cells to fibronectin causes changes in EphA2 expression and ligand binding that are reminiscent of EphA2-transformed cells (Compare Fig. 6C with Fig. 1A).

DISCUSSION

More recently, altered cellular adhesion have been linked to metastatic colonization of foreign microenvironments {Fidler 1995 ID: 2521}{Frisch & Ruoslahti 1997 ID: 969}{Lawrence & Steeg 1996 ID: 2279}. Such findings have been interpreted as evidence that metastatic cells bypass signals that are normally transmitted by ECM contacts {Frisch & Ruoslahti 1997 ID: 969}{Juliano 1994 ID: 2200}. An alternative explanation is that metastatic cells have gained the ability to reconstitute a permissive environment through autocrine production or remodeling of the local microenvironment.

The major finding of this study is that overexpression of the EphA2 tyrosine kinase alters the balance of cell-cell and cell-ECM adhesions in epithelial cells. EphA2 increases ECM contacts by inducing fibronectin and, in turn, fibronectin weakens cell-cell adhesions and decreases EphA2-ligand binding. Notably, fibronectin treatment of non-transformed cells confers changes in cell adhesion, EphA2 expression and EphA2-ligand binding in a manner that is identical to these same behaviors in malignant carcinoma cells. Thus, our results suggest a reciprocal regulation of EphA2 and fibronectin that could be widely applicable to understanding the molecular basis of malignant progression.

EphA2-Mediated Regulation of Fibronectin and ECM Attachments

The finding that EphA2 induces autocrine sources of ECM is consistent with evidence linking ECM attachments with the positive regulation of tumor cell growth, survival, migration and invasion {Howlett, Bailey, et al. 1995 ID: 256}{Frisch & Ruoslahti 1997 ID: 969}{Ruoslahti 1999 ID: 2227}{Juliano 1994 ID: 2200}{Akiyama, Olden, et al. 1995 ID: 533}. Our present findings are unique in that we show that EphA2 increases ECM attachments by upregulating fibronectin. This finding is consistent with evidence that fibronectin is overexpressed in metastatic cells and that fibronectin binding is necessary for an invasive phenotype {Livant, Pienta, et al. 2000 ID: 2559}{Ruoslahti 1999 ID: 2227}. These observations may not be unique to cancer as fibronectin is similarly upregulated as embryonic cells invade into the blastula during gastrulation, which is intriguing since Eph kinases have been shown to regulate mammalian development {Thiery, Duband, et al. 1985 ID: 2564}{Sanders 1983 ID: 2565}{Sefton & Nieto 1997 ID: SEFTON1997}{Frisen & Barbacid 1997 ID: FRISEN1997}{Stein, Cerretti, et al. 1996 ID: STEIN1996}{Zisch & Pasquale 1997 ID: 870}{Flanagan & Vanderhaeghen 1998 ID: FLANAGAN1998}{Drescher 1997 ID: DRESCHER1997}.

We also provide the first demonstration that fibronectin can cause non-transformed epithelial cells to acquire a phenotype that is reminiscent of aggressive carcinoma cells. If these results can be extended to the situation *in vivo*, then fibronectin may sensitize epithelial cells to malignant progression. In part, fibronectin could destabilize cell-cell contacts and facilitate cell detachment from the primary tumor. At the same time, increased ECM contacts could promote dissemination of metastases throughout the body. Our results suggest that malignant cells respond to autocrine sources of fibronectin. However, we cannot exclude that stromal elements could also provide paracrine sources of fibronectin. This possibility is intriguing in light of recent evidence that tumor-derived stromal cells can promote the malignant progression of benign epithelial cells {Hayward, Grossfeld, et al. 1998 ID: 2561}{Olumi, Grossfeld, et al. 1999 ID: 2560}.

EphA2, Fibronectin and Cell-Cell Adhesions.

The mechanism by which EphA2 destabilizes cell-cell adhesions is presently unknown. Although EphA2 does not decrease E-cadherin expression, MCF^{EphA2} cells appear to repel one another and thereby prevents E-cadherin function. Notably, other Eph kinases mediate similarly repel intercellular contacts during embryonic development {Cook, Tannahill, et al. 1998 ID: COOK1998}{Gale & Yancopoulos 1997 ID: GALE1997}{Connor, Menzel, et al. 1998 ID: CONNOR1998}{Ciossek, Monschau, et al. 1998 ID: CIOSSEK1998}{Drescher 1997 ID: DRESCHER1997}. Cadherins and integrins both require mechanical support from the actin cytoskeleton {Takeichi 1993 ID: 954}{Kemler 1992 ID: 402} and an alternative possibility is that EphA2 mediates a competition between integrins and cadherins for cytoskeletal interactions. Finally, cell binding to fibronectin could initiate intracellular signals that prevent the proper localization or molecular interactions of E-cadherin {Burridge, Turner, et al. 1992 ID: 113}{Rosales & Juliano 1995 ID: 1923}{Schwartz & Shattil 2000 ID: 2402}{Schlaepfer & Hunter 1998 ID: 2292}. Further investigation will be necessary to distinguish among these possibilities.

The altered adhesions EphA2-transformed cells are interesting given that E-cadherin is one of the most powerful tumor suppressors identified to date {Birchmeier 1995 ID: 338}. Our results suggest that decreased E-cadherin function could contribute to the oncogenic actions of overexpressed EphA2. Fibronectin production could further modify the surrounding microenvironment and thereby favor malignant growth and invasiveness. If these results can be extrapolated to analogous situations *in vivo*, then EphA2-mediated changes in cell adhesion could substantially disrupt the architecture and function of tissues that are proximal to EphA2-overexpressing tumors and thereby contribute to the pathology associated with malignant disease.

Recent studies by our laboratory and others have shown that ligand-mediated activation of EphA2 negative regulates ECM attachments {Miao, Burnett, et al. 2000 ID: MIAO1999}{Zantek, Azimi, et al. 1999 ID: 2203}.

Ligand-mediated autophosphorylation links EphA2 to downstream signaling molecules {Miao, Burnett, et al. 2000 ID: MIAO1999}{Pandey, Duan, et al. 1995 ID: PANDEY1995}{Pandey, Lazar, et al. 1994 ID: 182} and these signals likely compromise cytoskeletal support for ECM contacts. At first glance, our evidence that EphA2 promotes ECM attachments seemed to contradict these earlier findings. Upon closer inspection, we found that the EphA2 in malignant cells failed to bind its ligands. This observation is consistent with evidence that the highest levels of EphA2 are consistently found on tumor cells that lack ligand binding {Zantek, Azimi, et al. 1999 ID: 2203}{Zelinski, Zantek, et al. 2001 ID: ZANTEK1999}. Based on these findings, we postulate that EphA2-overexpressing tumor cells demonstrate increased ECM attachments for two reasons. First, EphA2 overexpression increases fibronectin and thereby provides a powerful adhesive substrate. Second, increased ECM contacts decreases cell-cell contacts, which prevents ligand-mediated inhibition of ECM contacts (Fig. 7).

Reciprocal Induction of EphA2 and Fibronectin During Malignant Progression

EphA2 overexpression increases ECM attachments by inducing fibronectin. Cell binding to fibronectin, in turn, destabilizes cell-cell adhesions and decreases ligand-mediated autophosphorylation (Figure 7). One consequence of ligand binding is EphA2 degradation, (Kinch et al., in preparation) and it logically follows that decreased ligand binding could allow EphA2 to accumulate in tumor cells. Indeed, this may explain why fibronectin treatment of non-transformed epithelia decreases EphA2 phosphotyrosine content while increasing EphA2 protein levels. Based on these observations, we propose that stimuli that either increase EphA2 expression, increase ECM attachments, or decrease cell-cell contacts will amplify the defects in EphA2 and cell adhesion described herein. Such a model might account for the prevalence of EphA2 overexpression and defective ligand binding in malignant carcinomas (*e.g.*, at least 70% of breast and prostate cancers) {Zantek, Azimi, et al. 1999 ID: 2203}{Zelinski, Zantek, et al. 2001 ID: ZANTEK1999}{Walker-Daniels, Coffman, et al. 1999 ID: 2202}. This model is also consistent with evidence that ligand binding reverses the malignant behavior of EphA2-overexpressing cells {Zantek, Azimi, et al. 1999 ID: 2203}{Zelinski, Zantek, et al. 2001 ID: ZANTEK1999}. Ultimately, strategies that target these defects in malignant cells could be used to target the large number of malignant cancers that overexpress EphA2.

Acknowledgements:

The authors thank Drs. xx for helpful discussions and critical reading of the manuscript. This work was supported by the American Cancer Society, NIH, and the USAMRAA Breast Cancer Research Program.

FIGURE LEGENDS:

Figure 1. Transformation of MCF-10A cells with EphA2 decreases cell-cell attachment. (B) EphA2-transformed (EphA2) and vector-transfected (Neo) MCF-10A cells, grown on coverslips in culture media overnight, were observed using phase-contrast microscopy (400x). Note that the EphA2-overexpressing cells did not organize into colonies, even at high cell density. (C) Cell-substratum (left panel) and cell-cell (right panel) adhesions were evaluated in control and EphA2-overexpressing cells using monolayer scrape and cell suspension analyses as detailed in the Materials and Methods. Bar = 50 μ m.

Figure 2. E-cadherin expression and localization in normal and EphA2-overexpressing MCF-10A cells. (A) The protein levels of E-cadherin and catenins in control and EphA2-transformed MCF-10A cells were evaluated by western blot analyses of whole cell lysates. (B) The association of catenins with E-cadherin in control and EphA2-transformed cells were evaluated by western blot analysis of E-cadherin immunoprecipitates. (C) The subcellular localization of EphA2 was observed in control and EphA2-overexpressing cells using immunofluorescence microscopy. Whereas E-cadherin was enriched within sites of cell-cell contact in control MCF-10A cells, E-cadherin was diffusely distributed over the surface of EphA2-overexpressing cells.

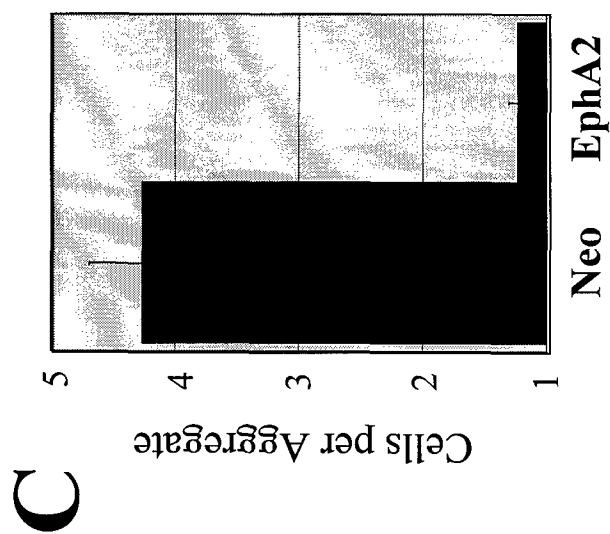
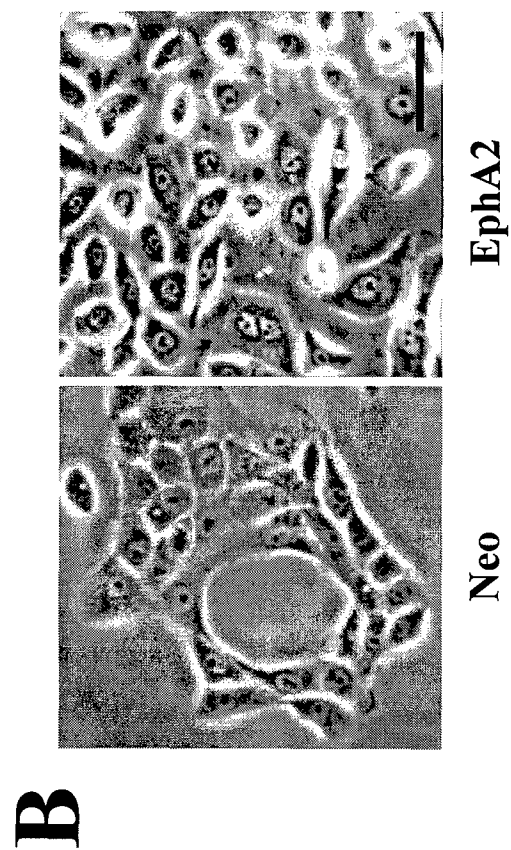
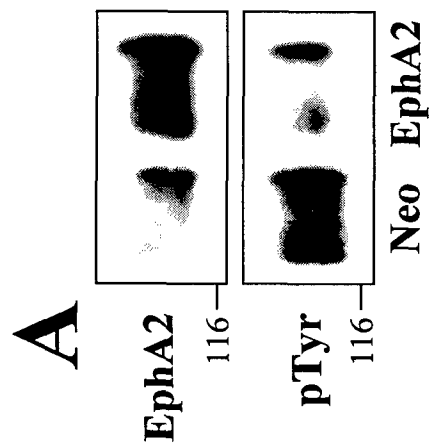
Figure 3. The increased substratum attachments of EphA2-transformed MCF-10A cells requires synthesis of an adhesive substrate. (A) Control and EphA2-transformed MCF-10A cells, grown on coverslips in culture media overnight, were stained with paxillin antibodies to assess focal adhesion formation. Bar = 25 μ m. (B) Control (Neo) and EphA2-transformed (EphA2) MCF-10A cells were suspended and incubated onto tissue-culture dishes for 30 minutes in the presence or absence of the protein synthesis inhibitor cycloheximide. Note that protein synthesis is necessary for the prominent substratum attachments of EphA2-transformed cells. (C) Control (Neo) and EphA2-transformed (EphA2) MCF-10A cells were suspended and incubated onto tissue-culture dishes that had been coated with saturating concentrations of either matrigel or fibronectin. Note that both normal and EphA2-transformed MCF-10A cells adhered comparably well to exogenous sources of extracellular matrix.

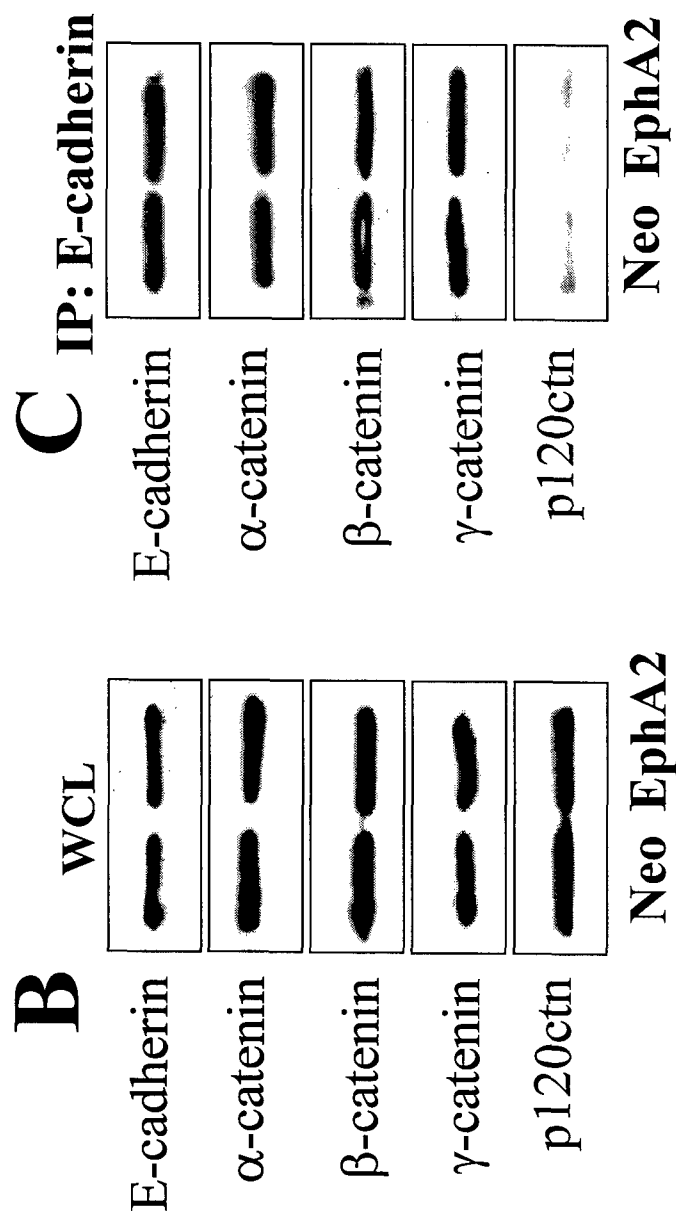
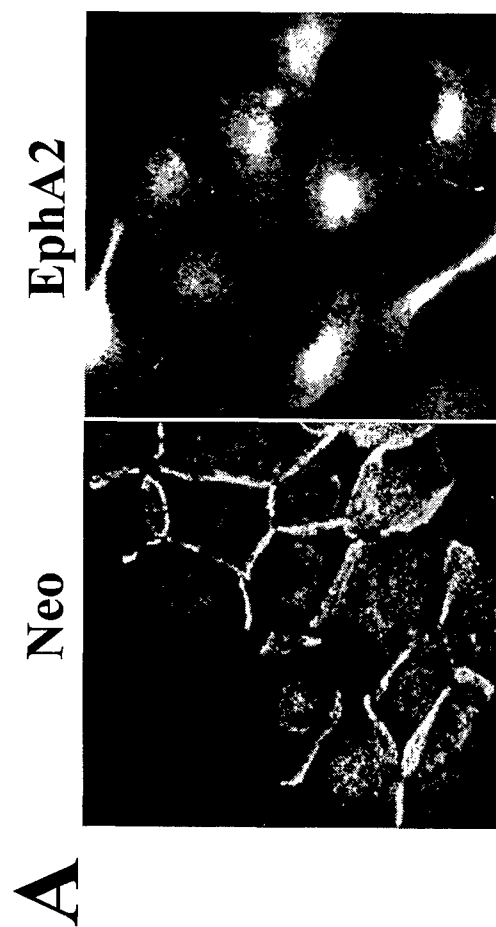
Figure 4. EphA2-transformed MCF-10A cells overexpress fibronectin. Whole cell lysates were collected from control and EphA2-transformed MCF-10A cells and subjected to western blot analysis with fibronectin-specific antibodies. The membranes were then stripped and re-probed with β -catenin antibodies to confirm equal sample loading. The graph indicates the relative levels of fibronectin as measured using digital scanning.

Figure 5. Integrin function is necessary for the altered balance of adhesions in EphA2-transformed MCF-10A cells. (A) EphA2-transformed MCF-10A cells were suspended and treated with the indicated function-blocking integrin antibodies before ECM detachment assay was performed as detailed above. (B) EphA2 transformed cells were incubated with integrin antibodies for 24 hours monolayer scrape cell-cell adhesion assay was performed as detailed above. Note that integrin function is necessary for the reduced cell-cell adhesions of EphA2-transformed cells.

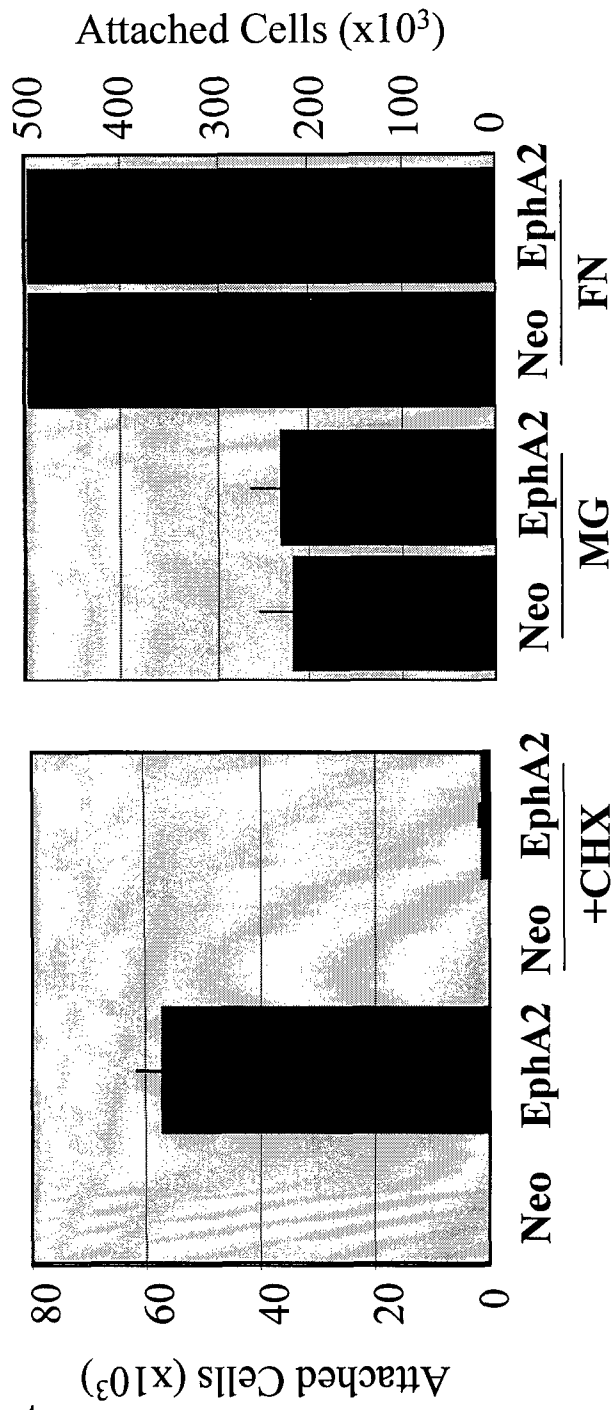
Figure 6. Fibronectin is sufficient to decrease cell-cell adhesion in normal MCF-10A cells. Monolayers of normal MCF-10A cells were incubated onto supports that had been coated with fibronectin, with matrigel-coated supports serving as a negative control. (A) Cells plated onto coated glass coverslips were immunostained with antibodies specific for paxillin (top) or E-cadherin (bottom). Bar = 25 μ m. (B) The cell-cell contacts of cells cultured on either fibronectin or Matrigel were assessed as detailed above. Note that exposure of normal MCF-10A cells to fibronectin was sufficient to induce an adhesive phenotype that was similar to EphA2-transformed MCF-10A cells. (C) Western blot analysis of whole cell lysates with EphA2-specific antibodies revealed increased levels of EphA2 in cells that had been incubated onto fibronectin. (D) EphA2 was immunoprecipitated and subjected to western blot analysis with phosphotyrosine-specific antibodies. Note that

Figure 7. Reciprocal regulation of EphA2 and fibronectin in transformed epithelial cells. Depicted is a model to summarize the relationships among EphA2, fibronectin and cellular adhesions. This model suggests that stimuli that either increase EphA2, fibronectin or ECM adhesions, or that decrease cell-cell adhesion, could initiate a cycle that increases EphA2 and fibronectin. This model also reflects our evidence that cell-cell adhesions are sensitive to cell-ECM interactions.

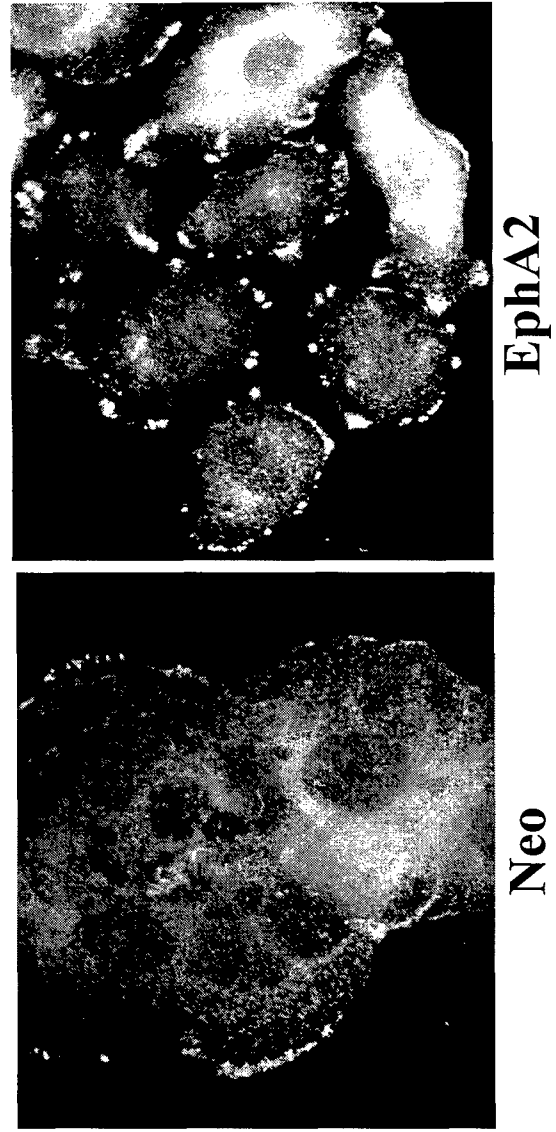


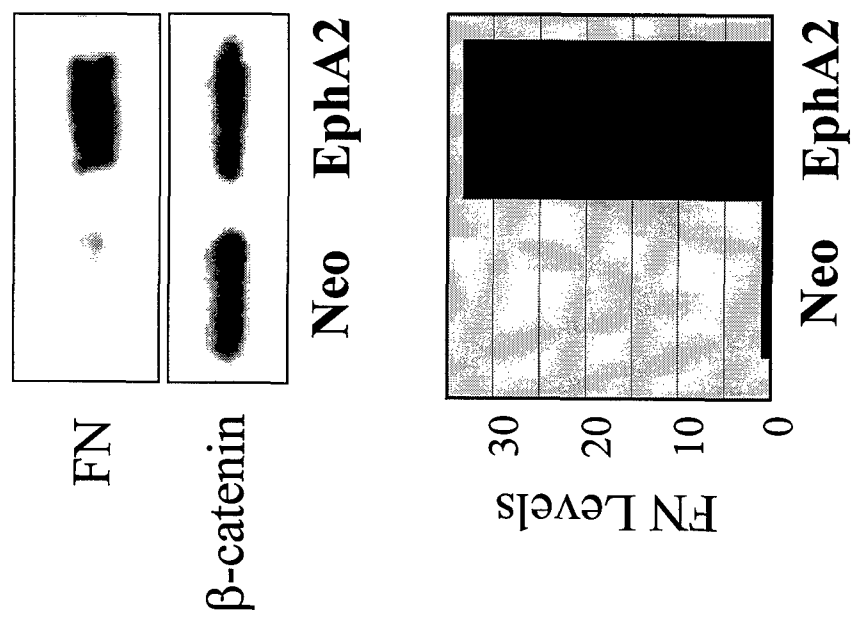


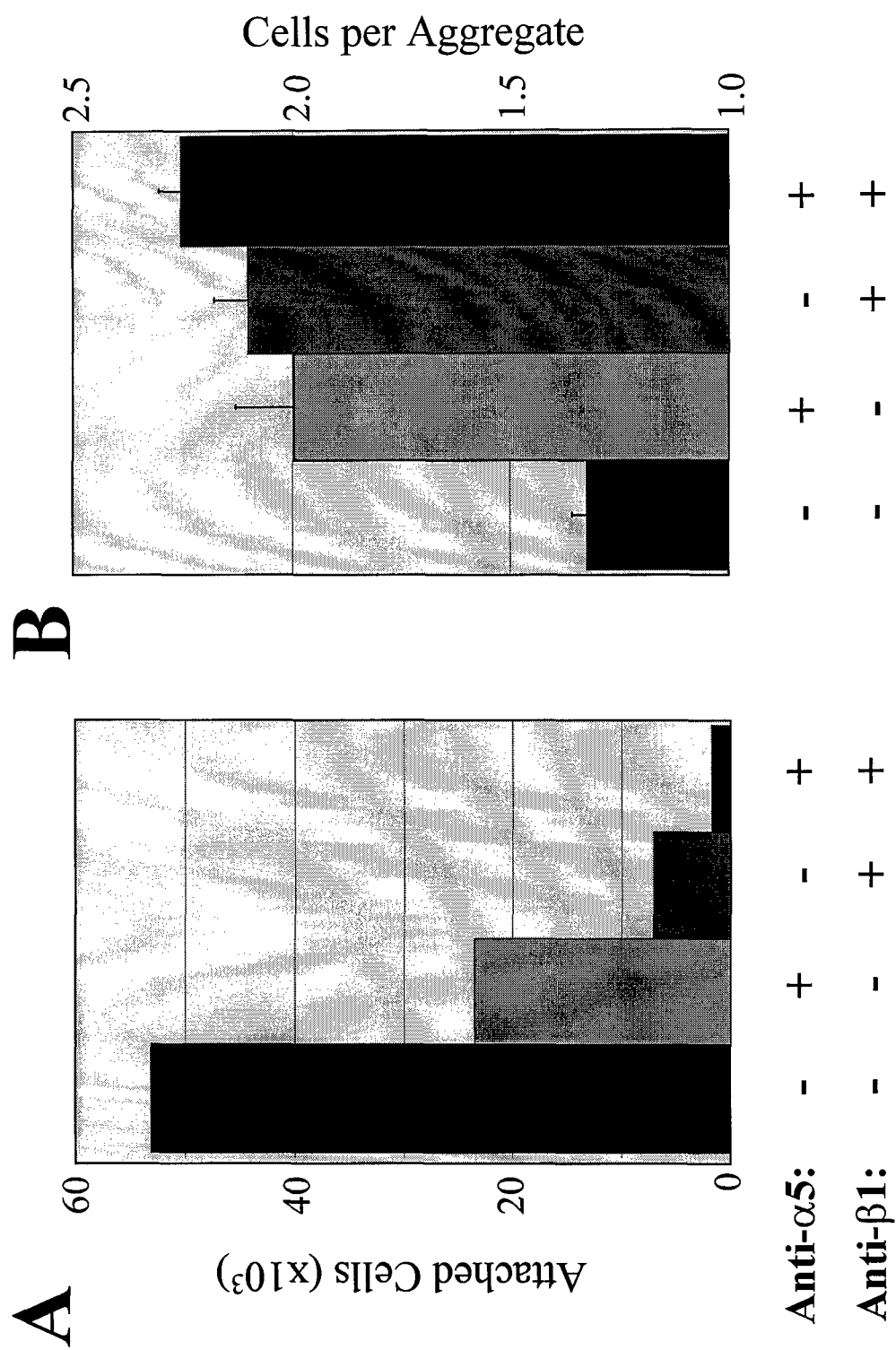
A

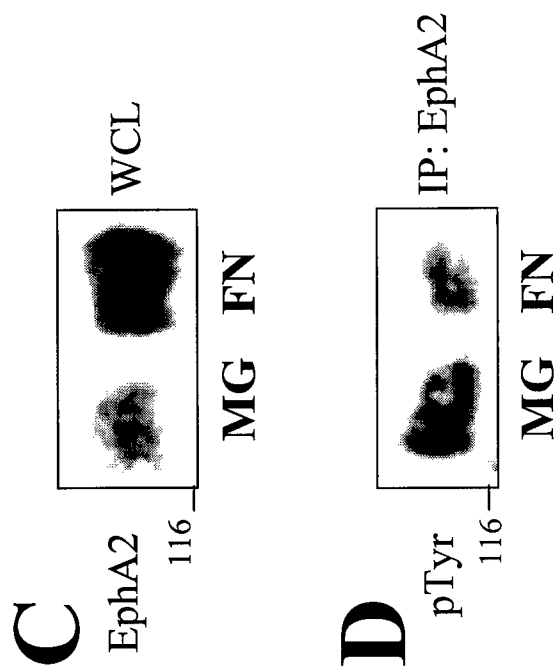
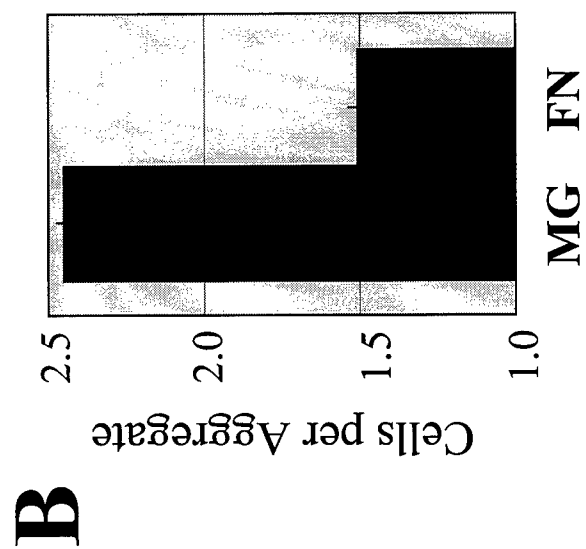
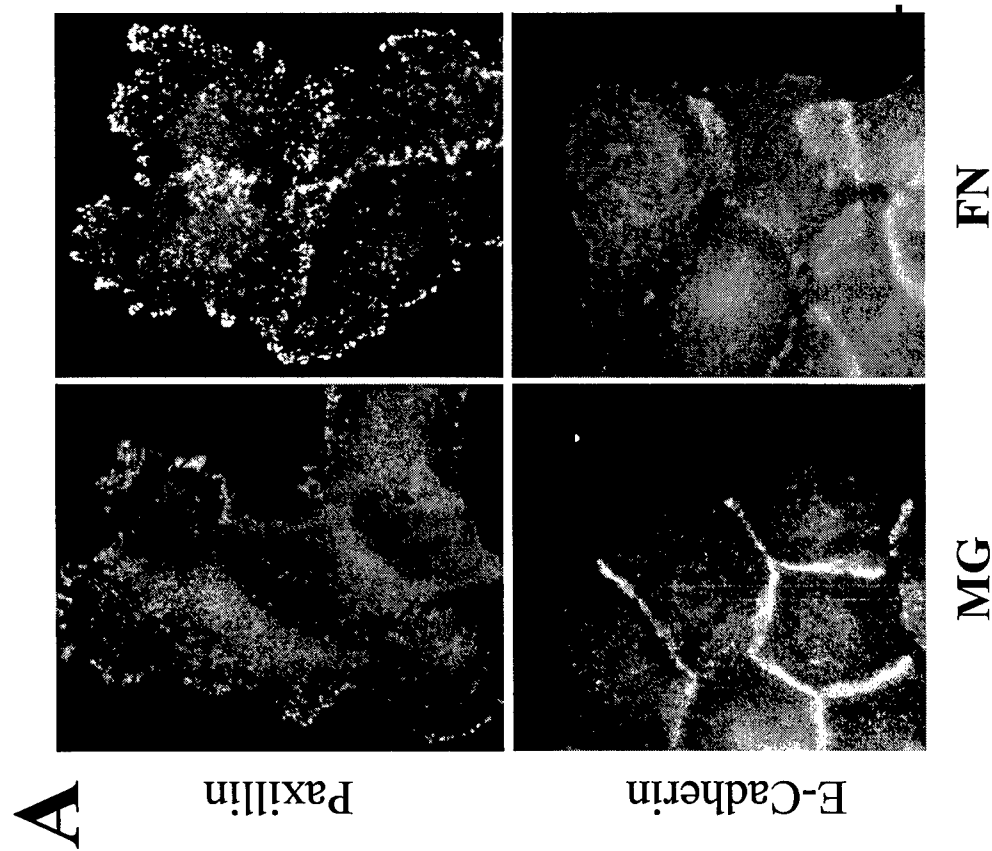


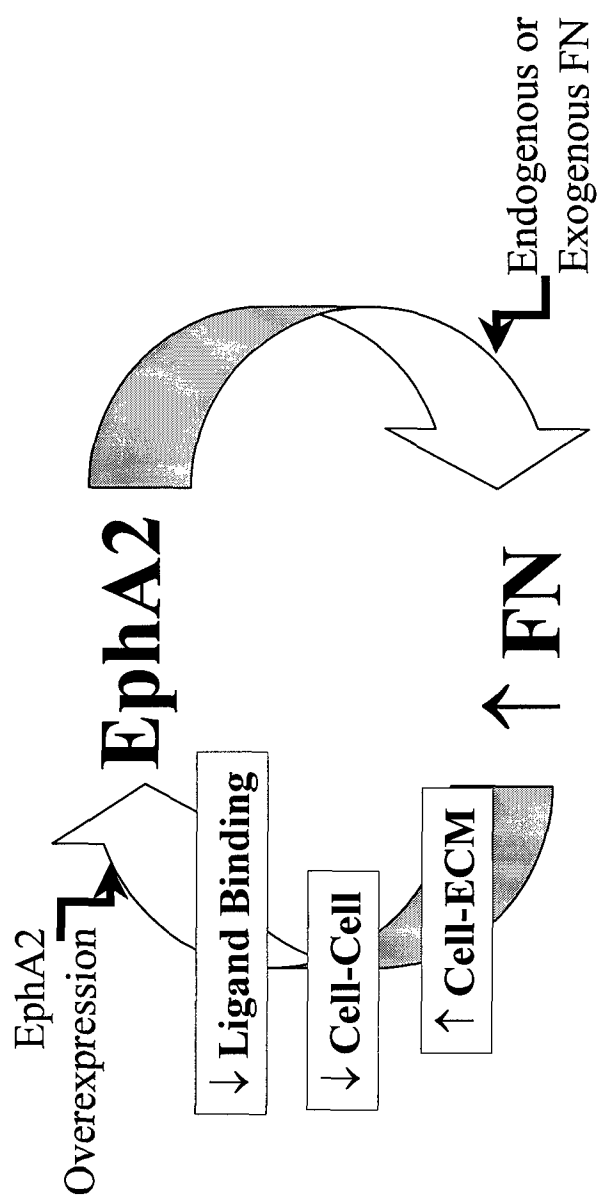
B













DEPARTMENT OF THE ARMY
US ARMY MEDICAL RESEARCH AND MATERIEL COMMAND
504 SCOTT STREET
FORT DETRICK, MARYLAND 21702-5012

REPLY TO
ATTENTION OF:

MCMR-RMI-S (70-1y)

26 Aug 02

MEMORANDUM FOR Administrator, Defense Technical Information
Center (DTIC-OCA), 8725 John J. Kingman Road, Fort Belvoir,
VA 22060-6218


SUBJECT: Request Change in Distribution Statement

1. The U.S. Army Medical Research and Materiel Command has reexamined the need for the limitation assigned to technical reports written for this Command. Request the limited distribution statement for the enclosed accession numbers be changed to "Approved for public release; distribution unlimited." These reports should be released to the National Technical Information Service.

2. Point of contact for this request is Ms. Kristin Morrow at DSN 343-7327 or by e-mail at Kristin.Morrow@det.amedd.army.mil.

FOR THE COMMANDER:

Encl


PHYLLIS M. RINEHART
Deputy Chief of Staff for
Information Management

ADB274369	ADB274596
ADB256383	ADB258952
ADB264003	ADB265976
ADB274462	ADB274350
ADB266221	ADB274346
ADB274470	ADB257408
ADB266221	ADB274474
ADB274464	ADB260285
ADB259044	ADB274568
ADB258808	ADB266076
ADB266026	ADB274441
ADB274658	ADB253499
ADB258831	ADB274406
ADB266077	ADB262090
ADB274348	ADB261103
ADB274273	ADB274372
ADB258193	
ADB274516	
ADB259018	
ADB231912	
ADB244626	
ADB256677	
ADB229447	
ADB240218	
ADB258619	
ADB259398	
ADB275140	
ADB240473	
ADB254579	
ADB277040	
ADB249647	
ADB275184	
ADB259035	
ADB244774	
ADB258195	
ADB244675	
ADB257208	
ADB267108	
ADB244889	
ADB257384	
ADB270660	
ADB274493	
ADB261527	
ADB274286	
ADB274269	
ADB274592	
ADB274604	