

Brief of Downfall

By: United States Army Forces, Pacific, [1945]

D
767.2
.U42
1945

Report Documentation Page

Form Approved
OMB No. 0704-0188

Public reporting burden for the collection of information is estimated to average 1 hour per response, including the time for reviewing instructions, searching existing data sources, gathering and maintaining the data needed, and completing and reviewing the collection of information. Send comments regarding this burden estimate or any other aspect of this collection of information, including suggestions for reducing this burden, to Washington Headquarters Services, Directorate for Information Operations and Reports, 1215 Jefferson Davis Highway, Suite 1204, Arlington VA 22202-4302. Respondents should be aware that notwithstanding any other provision of law, no person shall be subject to a penalty for failing to comply with a collection of information if it does not display a currently valid OMB control number.

1. REPORT DATE 1945	2. REPORT TYPE N/A	3. DATES COVERED -			
4. TITLE AND SUBTITLE Brief of Downfall		5a. CONTRACT NUMBER			
		5b. GRANT NUMBER			
		5c. PROGRAM ELEMENT NUMBER			
6. AUTHOR(S)		5d. PROJECT NUMBER			
		5e. TASK NUMBER			
		5f. WORK UNIT NUMBER			
7. PERFORMING ORGANIZATION NAME(S) AND ADDRESS(ES) United States Army Forces, Pacific		8. PERFORMING ORGANIZATION REPORT NUMBER			
9. SPONSORING/MONITORING AGENCY NAME(S) AND ADDRESS(ES)		10. SPONSOR/MONITOR'S ACRONYM(S)			
		11. SPONSOR/MONITOR'S REPORT NUMBER(S)			
12. DISTRIBUTION/AVAILABILITY STATEMENT Approved for public release, distribution unlimited					
13. SUPPLEMENTARY NOTES JFSC - WW II Declassified Records.					
14. ABSTRACT					
15. SUBJECT TERMS					
16. SECURITY CLASSIFICATION OF:			17. LIMITATION OF ABSTRACT	18. NUMBER OF PAGES	19a. NAME OF RESPONSIBLE PERSON
a. REPORT unclassified	b. ABSTRACT unclassified	c. THIS PAGE unclassified	SAR	10	



Army structures 10

M/G/W
1877

RDS

21 June 1945

MEMORANDUM FOR THE CHIEF, S&P GROUP:

SUBJECT: Brief of DOWNFALL.

1. Attached is a brief of DOWNFALL, which is General MacArthur's strategic plan for operations in the Japanese Archipelago. The plan deals with the broad strategic aspect and covers both OLYMPIC and CORONET.
2. General Hull has already been briefed on this plan.
3. It is recommended that this plan should be released to ANSCOL after the Kanto Plain has been secured.

MAX S. JOHNSON
 Colonel, GSC
 Chief, Strategy Section

Classification changed to
~~RESTRICTED~~
 by authority of _____
 by _____ date _____

~~TOP SECRET~~

BRIEF OF "DOWNFALL"

1. Scope.

DOWNFALL is General MacArthur's strategic plan for operations in the Japanese Archipelago. It constitutes the basis for directives for operations to force the unconditional surrender of Japan by seizure of vital objectives in the Japanese Archipelago.

The plan outlines:

- a. Existing directives.
- b. Assumptions concerning enemy intentions.
- c. Operations.
- d. Logistics.

It gives the broad outlines of Operations OLYMPIC and CORONET but does not go into details (see Map A).

2. Phases.

The plan visualizes attainment of the assigned objectives by two successive operations.

a. OLYMPIC - To advance our land-based air forces into Southern Kyushu in order to support the second, a knock-out blow to the enemy's heart in the Tokyo area.

b. CORONET - A major joint assault supported by the massed air and naval power in the Pacific to destroy hostile forces and seize the Tokyo - Yokohama Area.

c. Subsequent operations continued and extended until such organized resistance in the Japanese Archipelago ceases.

3. Enemy Forces.

OLYMPIC

3 Divs in Northern Kyushu

3 Divs in Southern Kyushu

8 to 10 Divs total enemy commitment

2,500 enemy aircraft.

~~TOP SECRET~~

CORONET

21 Divs in Honshu

14 Divs employed in Kanto Plain area.

Hostile capability for air action reduced to suicide attacks of uncertain proportions at an early phase of the operations.

4. Own Forces.OLYMPIC

Assault - 12 Divs

Follow-up - 2 Divs (including 1 A/B Div)

Area reserve - 3 Divs

If required, divisions set up for CORONET could be used in OLYMPIC and replaced from strategic reserve in USA.

Air Forces - see Map A.

CORONET

Assault - 14 Divs (including 2 Armored Divs)

Follow-up - 11 Divs (including 1 A/B Div)

Area reserve - 3 Divs

Strategic reserve in USA - 4 Divs per month beginning June 1946.

Air Forces - see Map A.

5. Command and Logistics.OLYMPIC

Sixth Army

Mounted - Philippines - 9 Divs

Okinawa - 1 Div

Marianas - 1 Div

Hawaii - 3 Divs

CORONET

Eighth and Tenth Armies

Mounted - Philippines - 15 Divs

Okinawa - 4 Divs

Kyushu - 4 Divs

Marianas - 2 Divs

~~RESTRICTED~~

WEST REPUBLICS

DOWN

SEA OF OKHOTSK

GINCAFPAC STRA
FOR OPERATIO
JAPANESE ARC
(Pursuant to JCS 1259
and WX 87938,

~~RESTRICTED~~
~~RESTRICTED RES~~

MANCHURIA

SAKHALIN I

KARAFUTO

GULF OF TARTARY

CHISHIMA RETTO
(KURIL ISLANDS)

HOKKAIDO

Enemy employed
in CORONET

JAPAN SEA

CHOSSEN
(KOREA)

YELLOW SEA
Total Enemy
committed to
OLYMPIC

Oki Retto

21

1 MAR - 12 GPS
1 JUN - 50 GPS

CORONET

ASSAULT

FOLLOW-UP

XX

⚓

3

XX

9

XX

2

1 MAR 46

XX

XX

10

XX

XX

1

XX
2 to 10

XX 3
XX 2

XX
14

XX
21

Hachijo Jima

A

P

A

N

MANCHURIA

CHISHIMA RETTO
(KURIL ISLANDS)

Enemy employed
in CORONET

XX
14

JAPAN SEA

HOKKAIDO

CORONET	
ASSAULT	FOLLOW-UP
XX ⚓ 3	XX 10
XX 9	XX 1
XX 2	

YELLOW SEA
Total Enemy
committed to
OLYMPIC

XX
8 to 10

XX 3

1 NOV - 8 GPS
1 MAR - 40 GPS
1 JUN - 34 GPS

1 NOV - 51 GPS
1 MAR - 30 GPS
1 JUN - 19 GPS

OLYMPIC	
ASSAULT	FOLLOW-UP
XX ⚓ 3	XX 1
XX 9	XX 1

1 MAR - 12 GPS
1 JUN - 50 GPS

1 NOV - 3 GPS
1 MAR - 3 GPS
1 JUN - 2 GPS

Nanking

Shanghai

CHOSSEN
(KOREA)

Oki Retto

21

Tokyo

Kyushu

4

Shikoku

Hachijo Jima

OLYMPIC

OGASAWARA
GUNTO

Io Jima

Formosa Strait

TAIWAN
(Formosa)

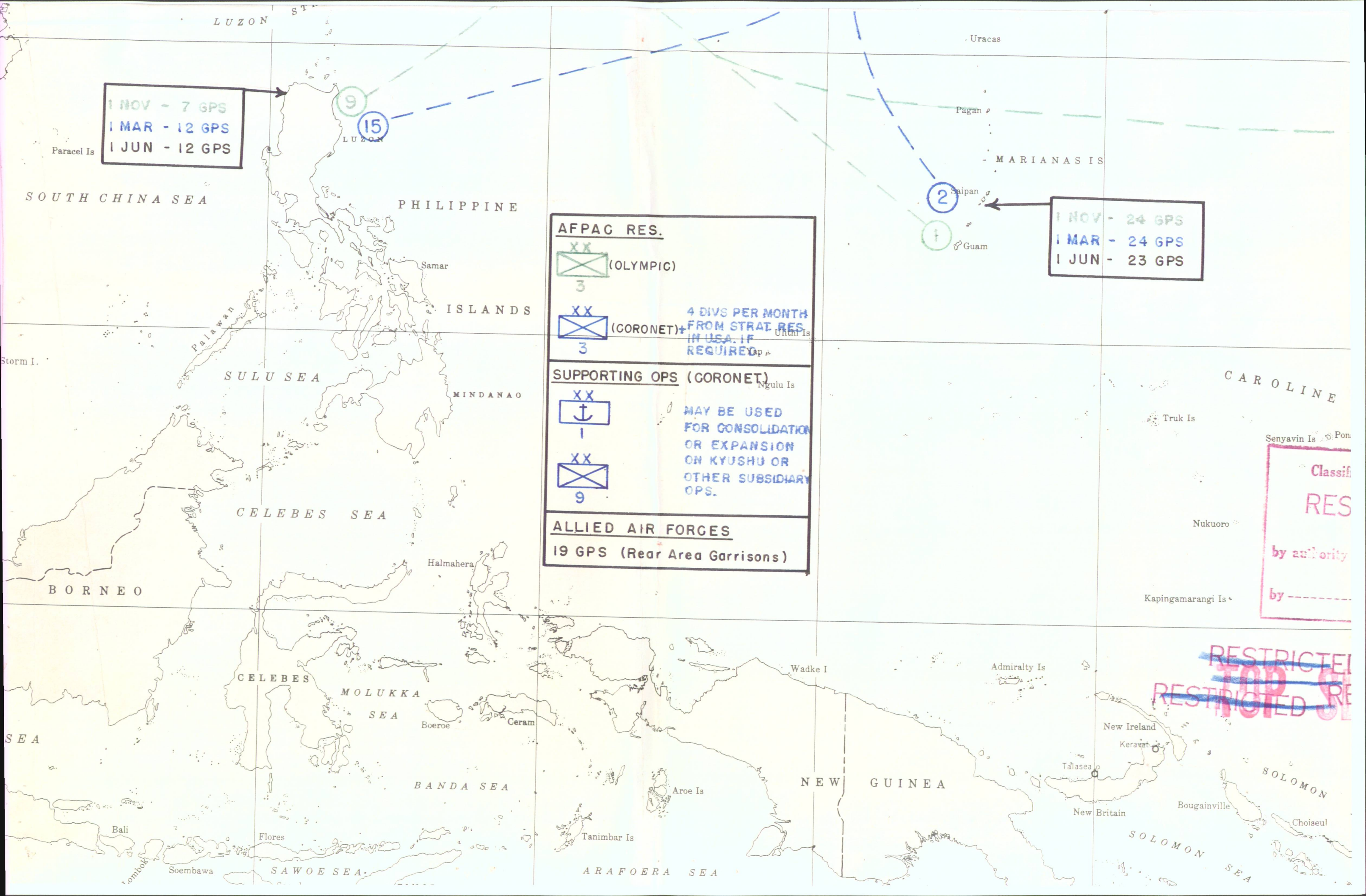
OKINAWA

4

SHOTO

Hongkong

Marcus I



1 NOV - 7 GPS
 1 MAR - 12 GPS
 1 JUN - 12 GPS

9
 15

1 NOV - 24 GPS
 1 MAR - 24 GPS
 1 JUN - 23 GPS

2

AFFAG RES.
 XX
 (OLYMPIC)
 3

XX
 (CORONET)
 3
 4 DIVS PER MONTH FROM STRAT RES. IN USA. IF REQUIRED

SUPPORTING OPS (CORONET)
 XX
 1
 XX
 9
 MAY BE USED FOR CONSOLIDATION OR EXPANSION ON KYUSHU OR OTHER SUBSIDIARY OPS.

ALLIED AIR FORGES
 19 GPS (Rear Area Garrisons)

Classif
 RES
 by authority
 by -----

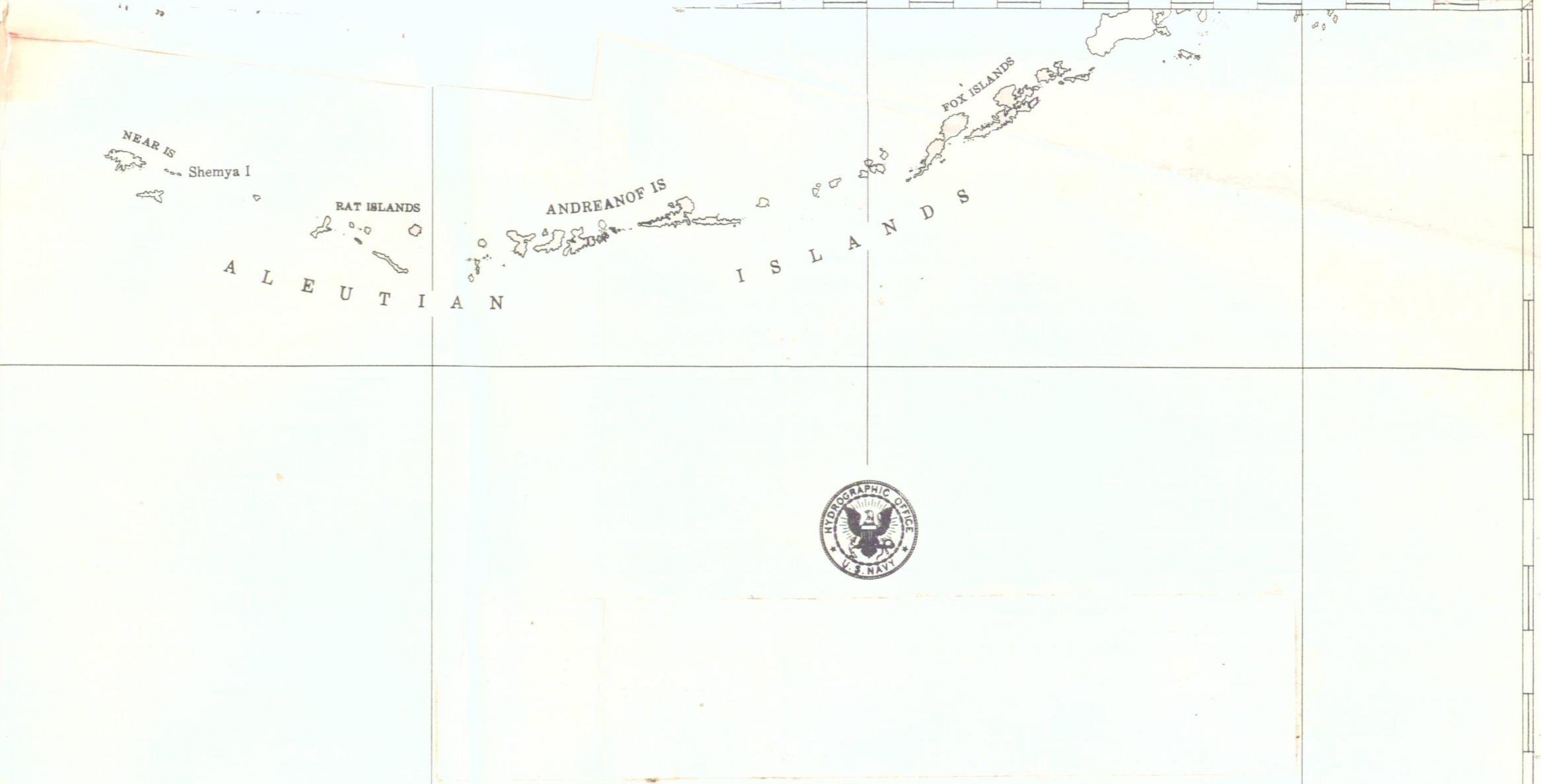
~~RESTRICTED~~
~~TOP SECRET~~
~~RESTRICTED~~

N FALL

Komandorski Is

STRATEGIC PLAN
 OPERATIONS IN
 ARCHIPELAGO
 (259/4, 3 April 1945
 138, 26 May 1945)

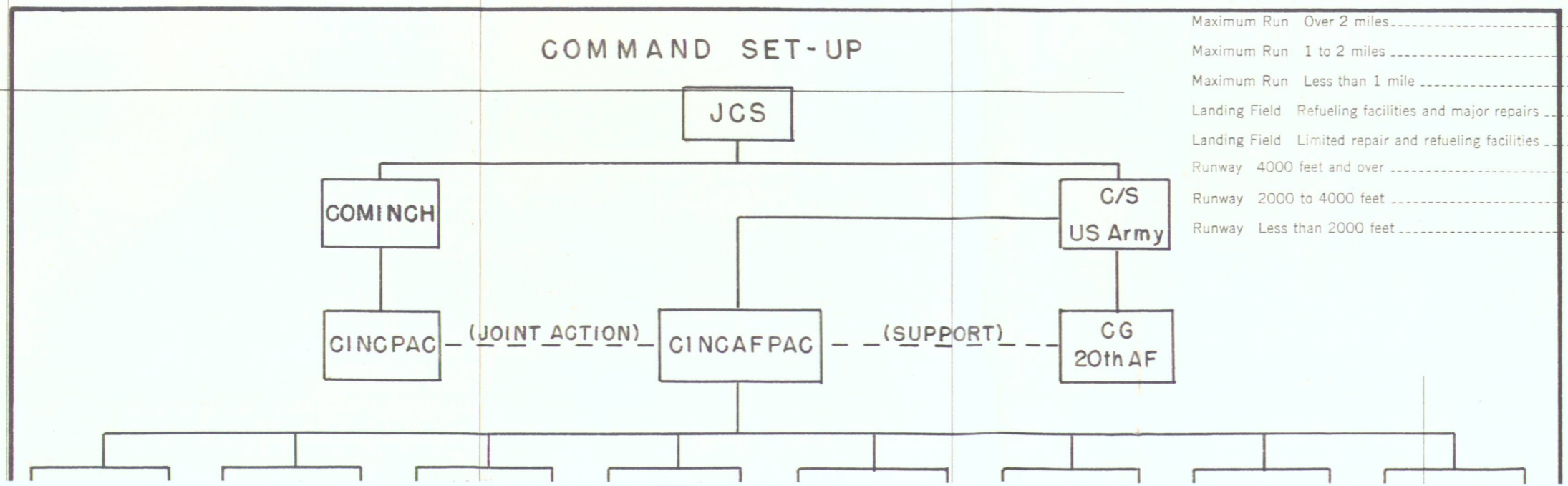
~~RESTRICTED~~
RESTRICTED



LEGEND

- Seaplane Anchorage Ramp, hauling out facilities, refueling facilities, and major repairs.....
- Seaplane Anchorage Limited repair and refueling facilities
- Emergency Seaplane Anchorage Limited or no facilities.....
- Maximum Run Over 2 miles.....
- Maximum Run 1 to 2 miles
- Maximum Run Less than 1 mile
- Landing Field Refueling facilities and major repairs
- Landing Field Limited repair and refueling facilities
- Runway 4000 feet and over
- Runway 2000 to 4000 feet
- Runway Less than 2000 feet.....

COMMAND SET-UP



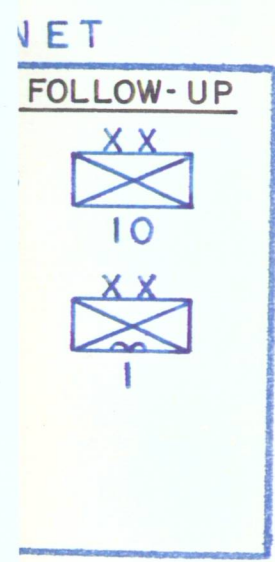
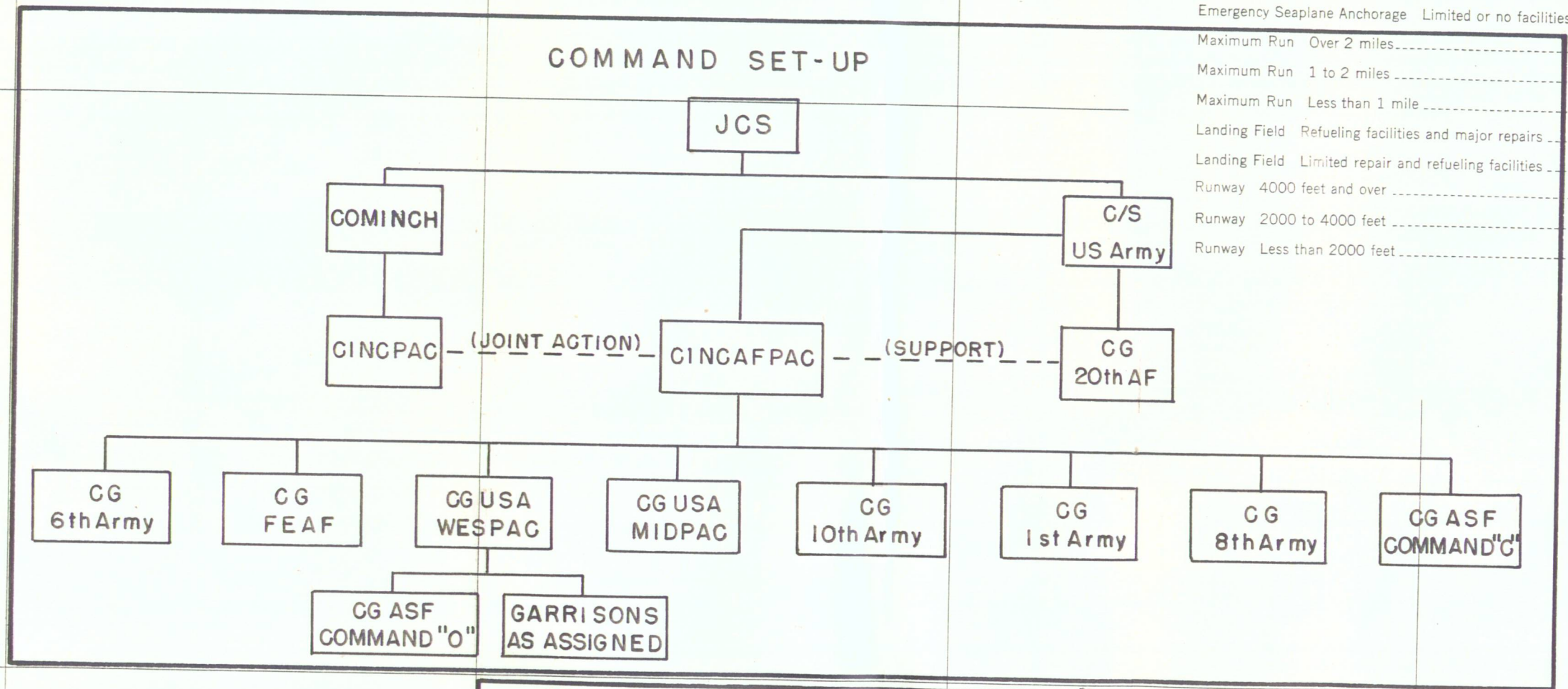
COMMAND SET-UP



LEGEND

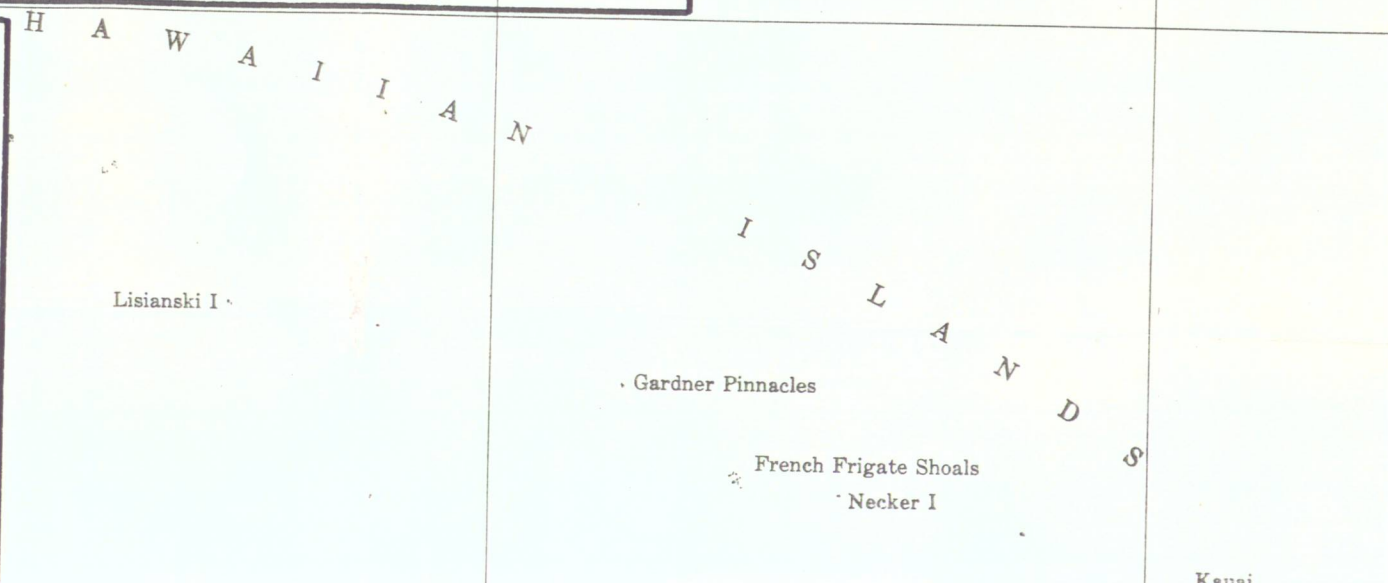
- Seaplane Anchorage Ramp, hauling out facilities, refueling facilities, and major repairs.....
- Seaplane Anchorage Limited repair and refueling facilities.....
- Emergency Seaplane Anchorage Limited or no facilities.....
- Maximum Run Over 2 miles.....
- Maximum Run 1 to 2 miles.....
- Maximum Run Less than 1 mile.....
- Landing Field Refueling facilities and major repairs.....
- Landing Field Limited repair and refueling facilities.....
- Runway 4000 feet and over.....
- Runway 2000 to 4000 feet.....
- Runway Less than 2000 feet.....

COMMAND SET-UP



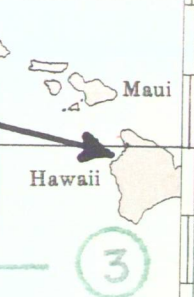
FORCES

OLYMPIC		Assault	Follow-up	14 DIVS
6th Army	}			
9 Divs				
3 Mar Divs				
1 Div	}	}	}	
1 A/B Div				
3 Divs - AFPAC Res.				
CORONET				
AFPAC	}	}	}	
8th Army				
10th Army				
9 Divs				



3	Mar Divs	} Assault	25	DIVS
2	Armd Divs			
1st	Army	} Follow-up		
10	Divs			
1	A/B Div			
3	Divs - AFPAG Res.			

1 NOV - 1 GP
 1 MAR - 1 GP
 1 JUN - 1 GP



CONCEPT

OLYMPIC
 Initial assaults seize and develop KAGOSHIMA WAN and ARIAKE WAN as ports of entry. Occupy area as far north as general line TSUNO - SENDAI.

CORONET
 Initially establish local air support and drive into KANTO PLAIN from outlying beaches while defences of approaches to TOKYO-WAN and Northern SAGAMI BAY are reduced by intensive naval and air action. Then occupation of TOKYO-YOKOHAMA area and rest of KANTO PLAIN.

NOTE:

- In event commitment for DOWNFALL exceeds forces projected, build-up of 4 divs per month from USA begins June 1946.
- Air Redeployments: -
 1 Nov 45 - 1 Jun 46 - 47 Gps
- Ultimate VHB Garrisons: -
 Marianas - 20 Gps
 Ryukyus - 12 Gps

NE ISLANDS

Classification changed to
 RESTRICTED

Priority of _____
 Date _____

~~SECRET~~
 RESTRICTED

