



## Army Sustainable Range Program (SRP)

# US Army Europe Integrated Training Area Management (ITAM) Program – Training Support and the Environment



**Jeff Andrews**

USAREUR ITAM Operations Coordinator  
Jeffrey.a.andrews@us.army.mil

# Report Documentation Page

*Form Approved*  
*OMB No. 0704-0188*

Public reporting burden for the collection of information is estimated to average 1 hour per response, including the time for reviewing instructions, searching existing data sources, gathering and maintaining the data needed, and completing and reviewing the collection of information. Send comments regarding this burden estimate or any other aspect of this collection of information, including suggestions for reducing this burden, to Washington Headquarters Services, Directorate for Information Operations and Reports, 1215 Jefferson Davis Highway, Suite 1204, Arlington VA 22202-4302. Respondents should be aware that notwithstanding any other provision of law, no person shall be subject to a penalty for failing to comply with a collection of information if it does not display a currently valid OMB control number.

1. REPORT DATE <b>JUN 2010</b>	2. REPORT TYPE	3. DATES COVERED <b>00-00-2010 to 00-00-2010</b>			
4. TITLE AND SUBTITLE <b>US Army Europe Integrated Training Area Management (ITAM) Program - Training Support and the Environment</b>		5a. CONTRACT NUMBER			
		5b. GRANT NUMBER			
		5c. PROGRAM ELEMENT NUMBER			
6. AUTHOR(S)		5d. PROJECT NUMBER			
		5e. TASK NUMBER			
		5f. WORK UNIT NUMBER			
7. PERFORMING ORGANIZATION NAME(S) AND ADDRESS(ES) <b>US Army Europe (ITAM), HQ, 7ATC,ATTN: AEAGC-TD-SH,Unit 28130,APO,AE,09114</b>		8. PERFORMING ORGANIZATION REPORT NUMBER			
9. SPONSORING/MONITORING AGENCY NAME(S) AND ADDRESS(ES)		10. SPONSOR/MONITOR'S ACRONYM(S)			
		11. SPONSOR/MONITOR'S REPORT NUMBER(S)			
12. DISTRIBUTION/AVAILABILITY STATEMENT <b>Approved for public release; distribution unlimited</b>					
13. SUPPLEMENTARY NOTES <b>Presented at the NDIA Environment, Energy Security &amp; Sustainability (E2S2) Symposium &amp; Exhibition held 14-17 June 2010 in Denver, CO.</b>					
14. ABSTRACT					
15. SUBJECT TERMS					
16. SECURITY CLASSIFICATION OF:			17. LIMITATION OF ABSTRACT <b>Same as Report (SAR)</b>	18. NUMBER OF PAGES <b>12</b>	19a. NAME OF RESPONSIBLE PERSON
a. REPORT <b>unclassified</b>	b. ABSTRACT <b>unclassified</b>	c. THIS PAGE <b>unclassified</b>			



# Agenda

- **ITAM Program / Introduction**
  - **Historical**
  - **Mission**
  
- **Monitoring**
  
- **Land Rehabilitation and Maintenance**
  
- **GIS Products and Services**
  
- **Outreach**
  
- **Final Thoughts**



## About the ITAM Program

**ITAM** is one of two DA G3 “Enabler” programs - the other, RTLP – that supports the objectives of the Army Sustainable Range Program (SRP) to **maximize the capability, availability, and accessibility of ranges and training land** (AR 350-19)

**Strategy:** Recognize inherent **requirement to train on land**, the **effects** of training on the land, and the Army’s need to **sustain** its training land assets and its responsibility for environmental stewardship.

**Intent:** Execute ITAM **within operations and training channels**

### Components:

1. Land Rehabilitation and Maintenance
  2. Range and Training Land Assessment
  3. Training Requirements Integration
  4. Sustainable Range Awareness
- ❖ Geographic Information System

**Managing the Army’s Training Land “Platform” to Sustain its Future Use for Training**



# Integrated Training Area Management ITAM Mission



- Land Rehabilitation and Maintenance
  - ✓ Initial Focus: JMRC Hohenfels ('87 Flood)
  - ✓ Check Dams / Retention Basins ('90s)
  - ✓ 3K Acres Reseeded Annually ('90)
  
- Land Condition Monitoring
  - ✓ Land Condition Plots Monitored Annually ('86)
  - ✓ Annual Satellite Imagery ('86)
  - ✓ Runoff Monitoring Stations ('93)
  
- Geographic Information System (GIS) Data Acquisition
  - ✓ Aerial Orthoimagery ('92)
  - ✓ LIDAR (Sub-Meter Elevation Models) ('03)
  - ✓ NAVTEQ ('04)



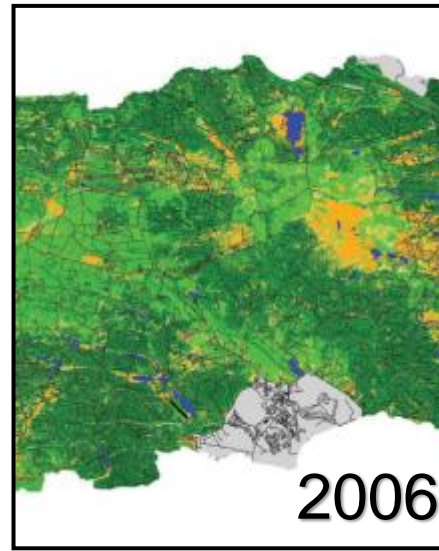


## Traditional Perspective

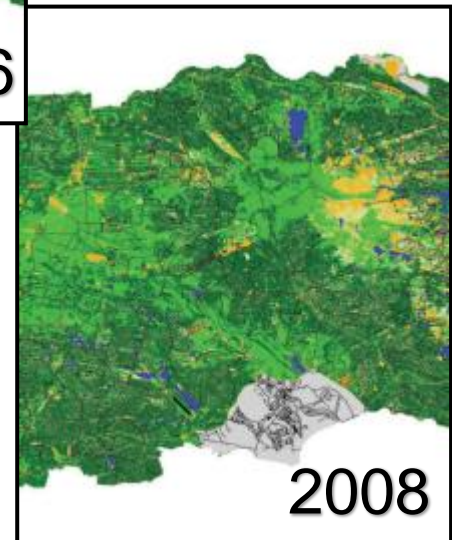


**RTLA** is used to characterize and monitor natural resources, geospatially and temporally. RTLA assessments generate installation-specific ecological information that is used to evaluate the impacts of training and testing activities.

## USAREUR Perspective



The **USAREUR RTLA** program identifies and tracks the distribution of land cover types using satellite imagery interpretation.





# Integrated Training Area Management Land Rehabilitation and Maintenance



## Traditional Perspective

- LRAM projects were dominated by the concept of “sustainability” with a focus on the construction, repair and maintenance of a training area’s erosion control infrastructure.
- Currently the state of USAREUR’s Training Areas infrastructure is strong, and, in some cases, the roads and maneuver space are in a condition far superior to that of the Contemporary Operating Environment (COE).





# Integrated Training Area Management Land Rehabilitation and Maintenance

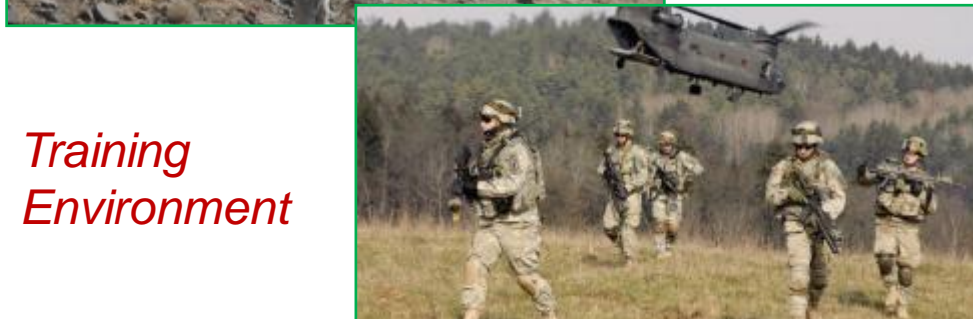


## In the Future!

- USAREUR ITAM will place a higher priority on projects that enhance training realism by attempting to create realistic training environments.



*Operating Environment*



*Training Environment*

## Select observations from the Afghanistan OE:

- Agriculture / pastoral land use surrounding villages
- Narrow passages
- Obstacles to walk over or hide behind, curbs, roofs, trash, low hanging wires.
- Lack of developed roads
- Recovery of vehicles
- Mountain, dismounted, rough terrain, little mounted





## Traditional Standard Product Line:

- **Hard Copies**
  - Soldier Field Cards
  - Installation Special Maps
  - Map Atlases
  - Raised Relief Maps
  - Military Installation Maps (MIMs)
- **Online**
  - SRP Website
  - Army Range Mapper
- **DVD**
  - ITAM Viewer
  - Flight Simulator



## USAREUR Standard Product Line:

- **Hard Copies**
  - Soldier Field Cards
  - Installation Special Maps
  - Map Atlases
  - Raised Relief Maps
  - Military Installation Maps (MIMs)
- **Online**
  - **NEW** - Army Range Mapper (ARM)
  - **NEW** - SRP Website
- **DVD**
  - **NEW** - ITAM Viewer
  - Flight Simulator



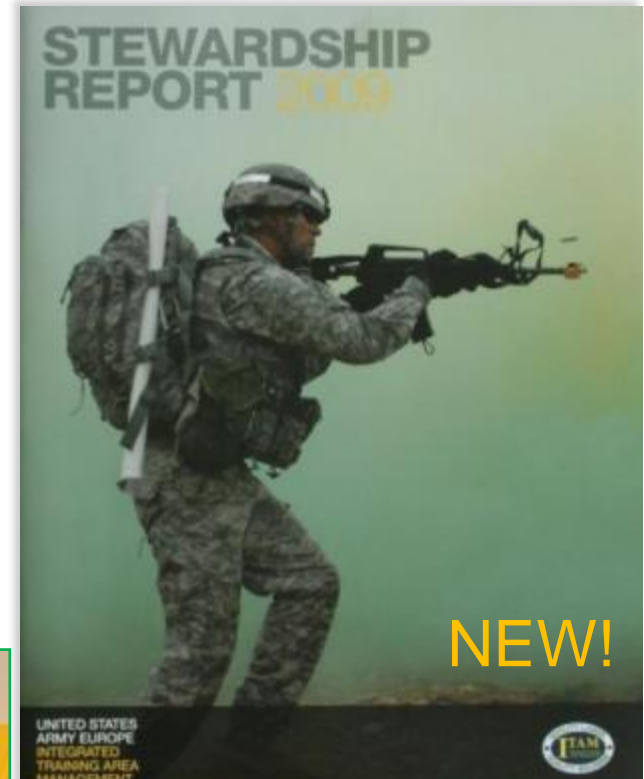


# Integrated Training Area Management Outreach



- Public support is critical for mitigating range encroachment challenges that can restrict or shut down training activities. **Much of the public is not aware of how or why the U.S. Army trains.**

- USAREUR ITAM plays an active role in supporting community outreach events, including dissemination of informational products detailing USAREUR's environmental commitment.







# Integrated Training Area Management Sharing with Multinational Partners



Swaziland



Tanzania



Romania



Malawi





# Integrated Training Area Management Quality Lands, Quality Soldiers



## Questions?

### USAREUR ITAM Operations Coordinator

Jeff Andrews

DSN: 475-6902

CIV: 09641-83-6902

FAX: 475-8344 / 09641-83-8344

EMAIL: [jeffrey.a.andrews@us.army.mil](mailto:jeffrey.a.andrews@us.army.mil)

### MAILING ADDRESS

HQ, 7ATC

ATTN: AEAGC-TD-SH

Unit 28130

APO AE 09114

