

AD _____

(Leave blank)

Award Number: W81XWH-08-1-0319

TITLE: XBP1, Unfolded Protein Response, and Endocrine Responsiveness

PRINCIPAL INVESTIGATOR: Robert Clarke, Ph.D.

CONTRACTING ORGANIZATION: Georgetown University
Washington, DC 20007

REPORT DATE: May 2009

TYPE OF REPORT: ANNUAL

PREPARED FOR: U.S. Army Medical Research and Materiel Command
Fort Detrick, Maryland 21702-5012

DISTRIBUTION STATEMENT: (Check one)

☒ XX Approved for public release; distribution unlimited

☐ Distribution limited to U.S. Government agencies only;
report contains proprietary information

The views, opinions and/or findings contained in this report are those of the author(s) and should not be construed as an official Department of the Army position, policy or decision unless so designated by other documentation.

REPORT DOCUMENTATION PAGE			Form Approved OMB No. 074-0188	
Public reporting burden for this collection of information is estimated to average 1 hour per response, including the time for reviewing instructions, searching existing data sources, gathering and maintaining the data needed, and completing and reviewing this collection of information. Send comments regarding this burden estimate or any other aspect of this collection of information, including suggestions for reducing this burden to Washington Headquarters Services, Directorate for Information Operations and Reports, 1215 Jefferson Davis Highway, Suite 1204, Arlington, VA 22202-4302, and to the Office of Management and Budget, Paperwork Reduction Project (0704-0188), Washington, DC 20503				
1. Agency Use Only (Leave blank)	2. Report Date May 2009	3. Report Type and Period Covered (i.e., annual 1 Jun 00 - 31 May 01) Annual; 15 APR 2008 - 14 APR 2009		
4. Title and Subtitle XBP1, Unfolded Protein Response and Endocrine Responsiveness		5. Award Number W81XWH-08-1-0319		
6. Author(s) Robert Clarke, Ph.D.				
7. Performing Organization Name (Include Name, City, State, Zip Code and Email for Principal Investigator) Georgetown University 37 th & O Sts, NW Washington, DC 20007, USA E-Mail: clarker@georgetown.edu		8. Performing Organization Report Number (Leave Blank)		
9. Sponsoring/Monitoring Agency Name and Address U.S. Army Medical Research and Materiel Command, Fort Detrick, Maryland 21702-5012		10. Sponsoring/Monitoring Agency Report Number (Leave Blank)		
11. Supplementary Notes (i.e., report contains color photos, report contains appendix in non-print form, etc.)				
12a. Distribution/Availability Statement (check one) XX Approved for public release; distribution unlimited			12b. Distribution Code (Leave Blank)	
13. Abstract (Maximum 200 Words) (abstract should contain no proprietary or confidential information) Almost 50% of all ER+ breast tumors will not respond to endocrine therapy. Resistance to endocrine therapy remains a significant clinical problem and advanced ER+ breast cancer is largely an incurable disease. Endocrine manipulation in sensitive cells can result in the induction of cell death through autophagy and/or apoptosis. We have recently obtained data implicating the unfolded protein response (UPR) as induced by the splicing of X-box binding protein-1 (XBP1) in the regulation of endocrine responsiveness in breast cancer cells. UPR is a key component of the endoplasmic reticulum stress response and has not previously been implicated in endocrine responsiveness. We hypothesize that XBP1(S) is a key regulator of breast cancer cell fate, acting through its regulation of UPR, BCL2, and BCL2:BECN1 heterodimers, and their subsequent effects on autophagy and apoptosis. We will determine how XBP1(S) affects cell fate, evaluating the role of an induction of UPR that activates a prosurvival autophagy. In endocrine sensitive cells, autophagy should persist and become a cell death mechanism that can also initiate apoptosis. In resistant cells, basal autophagy should represent a survival mechanism to deal with the loss of autocrine and other growth factor signaling that accompanies endocrine therapy. We will explore the mechanistic role of XBP1(S) and its integrated signaling through UPR and BCL2 to regulate cell fate in both endocrine sensitive and resistant cells.				
14. Subject Terms (keywords previously assigned to proposal abstract or terms which apply to this award) Antiestrogens, aromatase inhibitors, BCL2 family, bioinformatics, drug resistance, endoplasmic reticulum, Faslodex, Fulvestrant, gene networks, mitochondria, molecular signaling, Tamoxifen, unfolded protein response.			15. Number of Pages (all'd' g" incl cover) 29 16. Price Code (Leave Blank)	
17. Security Classification of Report Unclassified	18. Security Classification of this Page Unclassified	19. Security Classification of Abstract Unclassified	20. Limitation of Abstract Unlimited	

TABLE OF CONTENTS

Introduction.....	4
Body.....	4-9
Key Research Accomplishments.....	5-8
Reportable Outcomes.....	9
Conclusions.....	9
References.....	9-10
Appendices.....	

1. Shajahan, et al., *Drug News Perspect* 22: 241-246, 2009.
2. Clarke, et al., *J Steroid Biochem Mol Biol*, 114: 8-20, 2009.

INTRODUCTION

In 2008, over 40,000 American women will die of breast cancer [1]. In the same period, there will be over 178,000 newly diagnosed cases of invasive breast cancer, almost 70% of which will be estrogen receptor- α positive (ER+) [2,3]. However, 50% of all ER+ breast tumors will not respond to endocrine therapy [4]. Tamoxifen produces an overall 26% proportional reduction in mortality [5] but many ER+ tumors that show an initial response to tamoxifen eventually recur [4]. Resistance to endocrine therapy remains a significant clinical problem and advanced ER+ breast cancer is largely an incurable disease. Endocrine manipulation in sensitive cells can result in the induction of cell death through autophagy and/or apoptosis. However, the control of these processes, and an understanding of how the dual nature of autophagy is regulated in breast cancer cells (autophagy can be prodeath or prosurvival), is largely unknown. We have recently obtained data implicating the unfolded protein response (UPR) as induced by the splicing of X-box binding protein-1 (XBP1) in the regulation of endocrine responsiveness in breast cancer cells. UPR is a key component of the endoplasmic reticulum stress response and has not previously been implicated in endocrine responsiveness.

We propose that XBP1 uses a specific cellular stress response mechanism (the unfolded protein response), members of the BCL2 gene family, and two other genes, *i.e.*, beclin 1 (BECN1) and MYC to mediate this control of cell fate. The choice to live or die is a critical decision for a breast cancer cell, and a greater understanding of how this choice is regulated is needed. This IDEA award would allow us to explore, in a timely and effective manner, these very recent observations that have lead directly to the construction of our novel hypothesis.

The proposed research could lead to better approaches to predict an individual patient's responsiveness to endocrine therapies and to the development of new strategies to improve the efficacy of endocrine therapies and increase overall survival. For example, measuring the coexpression of activated XBP1 and its key downstream targets that regulate cell survival could be used to more accurately predict the sensitivity of a tumor to endocrine therapy. Inhibiting the activation of XBP1 could either prevent the development of resistance or restore sensitivity.

BODY

Overview: We will study how XBP1(S)-UPR mechanistically affects endocrine responsiveness. We propose that XBP1(S)-regulation of UPR activates prosurvival autophagy in endocrine resistant cells but can switch to prodeath autophagy leading to an autophagic and/or apoptotic cell death in sensitive cells. In endocrine resistant cells, **we propose** that XBP1(S) maintains a high level of *prosurvival* autophagy (UPR), while also increasing BCL2 expression that feeds back to limit *prodeath* autophagy (BCL2:BECN1) and/or apoptosis (BCL2).

We hypothesize that XBP1(S) is a key regulator of breast cancer cell fate, acting through its regulation of UPR, BCL2, and BCL2:BECN1 heterodimers, and their subsequent effects on autophagy and apoptosis. Specifically, we hypothesize that XBP1(S) uses UPR (proautophagy) and BCL2 (antiapoptosis) and BCL2:BECN1 interactions (antiautophagy) to regulate the balance between autophagy and apoptosis and to determine breast cancer cell fate in response to antiestrogens and aromatase inhibitors (which we will model with estrogen deprivation).

Specific Aims We will use a series of human breast cancer cell lines/variants and apply established and state-of-the art methods to address our specific aims. We will explore the mechanistic role of XBP1(S) and its integrated signaling through UPR and BCL2 to regulate cell fate in both endocrine sensitive and resistant cells.

AIM 1: We will determine how XBP1(S) affects cell fate, evaluating the role of an induction of UPR that activates a prosurvival autophagy. In endocrine sensitive cells, autophagy should persist and become a cell

death mechanism that can also initiate apoptosis. In resistant cells, basal autophagy should represent a survival mechanism to deal with the loss of autocrine and other growth factor signaling that accompanies endocrine therapy, with the switch to prodeath signaling being concurrently suppressed.

AIM 2: We will determine how XBP1(S) signals (*e.g.*, through BCL2 and BECN1) to affect endocrine responsiveness and cell survival. We will then use these data to build an interactive *in silico* model of how this signaling operates (how the nodes are connected and function) in the context of endocrine responsiveness.

KEY RESEARCH ACCOMPLISHMENTS

- Endocrine resistance in breast cancer cells over-expressing XBP1 is linked to increase in autophagy and UPR; however, the PERK arm of the UPR is not involved
- Knockdown of XBP1 in resistant cells down-regulates endogenous BCL2 (antiapoptotic) expression
- Resistant cells are more sensitive to growth inhibition by small molecule BCL2 and MYC inhibitors
- Published two peer-reviewed articles (see Reportable Outcomes)

Progress on our Statement of Work

AIM 1.

Aim 1 – Determine the role of XBP1(S) in endocrine sensitivity.

- Transiently transfect sensitive cells (MCF-7, T47D, LCC1), resistant variants (LCC2, LCC9, T47D-r) and the negative control (MDA-MB-231) cells with XBP1(S) siRNA or XBP1(S) cDNA to assess their effects on E2 withdrawal, response to 4OHT and FAS.

We are currently testing the efficacy of transfection methods (by electroporation, or by cationic lipids) to transiently express XBP1(U) and XBP1(S) in the various cell lines. Overexpression of full length in T47D cells increased cleavage of autophagy marker LC3II in response to treatment with FAS (Fig. 1).

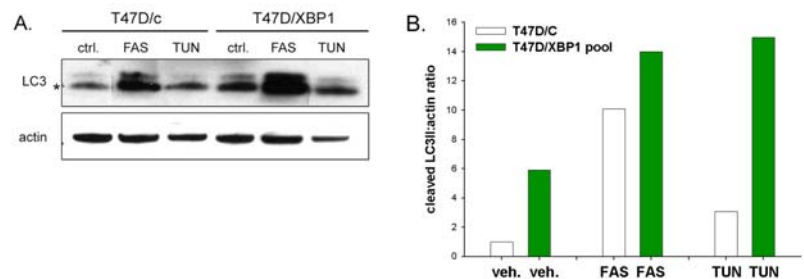


Fig 1: Cleavage of the autophagy-associated marker LC3II is enhanced in T47D/XBP1 cells. *A*, Western blot. *denotes LC3II cleavage product. *B*, quantitation of LC3II:actin ratio. C=empty vector; TUN = 2μg/ml (positive control), FAS=100 nM.

We have found that knockdown of XBP1(S) in LCC9 (resistant cells), decreases endogenous BCL2 levels (Fig. 2). We have also purchased XBP1 shRNA lentiviral particles and are currently generating stable cell lines that will be used to study response to E2 withdrawal and sensitivity to 4OHT and FAS for longer treatment periods (up to 7 days).

Aim 1 – Study UPR, autophagy and apoptosis *in vitro*.

- Quantify UPR in the sensitive, resistant and negative control cells following transient expression of XBP1(S) using multiplex qPCR to measure gene expression in UPR.
- Measure XBP1 splicing using the luminescent splice reporter plasmid and lipid-

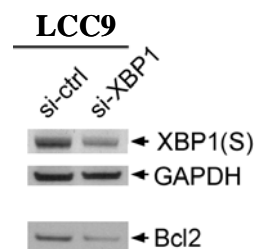


Fig 2: Knockdown of XBP1 by siRNA reduces BCL2 expression

linked oligosaccharide (LLO) extension during UPR as the ratios of mature LLOs to immature LLO intermediates.

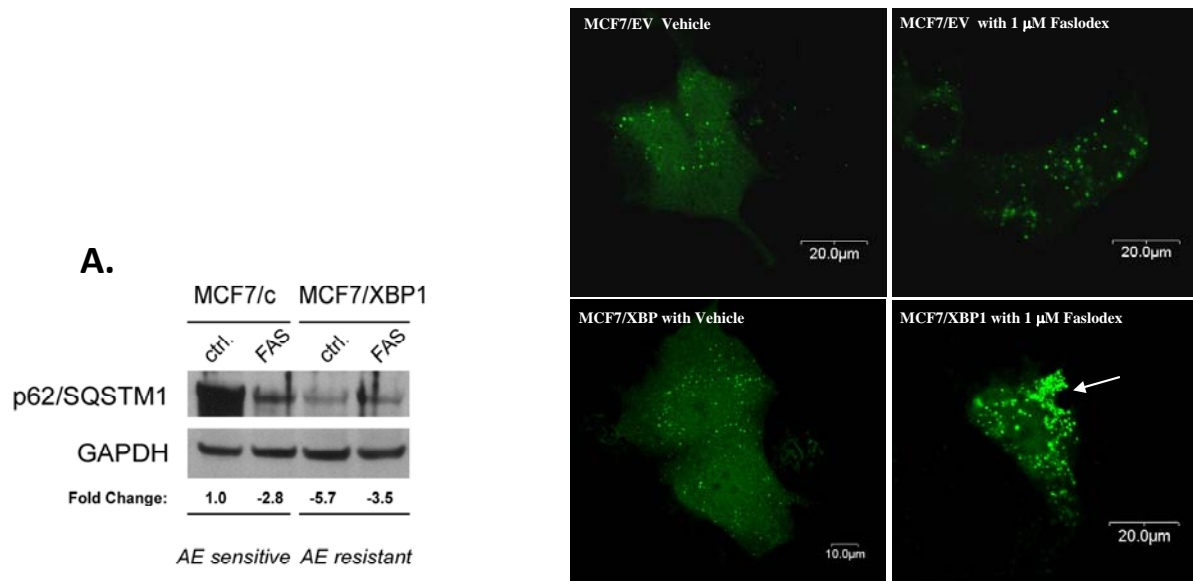


Fig 3: Autophagy is enhanced upon FAS treatment and/or XBP1 over-expression in ER+ breast cancer cell lines. *A*, MCF7 stably expressing XBP1 cDNA or the empty vector control (c) were treated with FAS or ethanol control (ctrl.) vehicle prior to lysis and immunoblotting using standard procedures. Fold change values indicate the ratio of each target protein to the loading control, and are normalized to empty vector, vehicle-treated cells. *B*, Expression of GFP-LC3II in MCF7/EV or MCF7/XBP1 stable cells. MCF7/XBP1 cells treated with 1μM FAS showed increased level of GFP-LC3II.

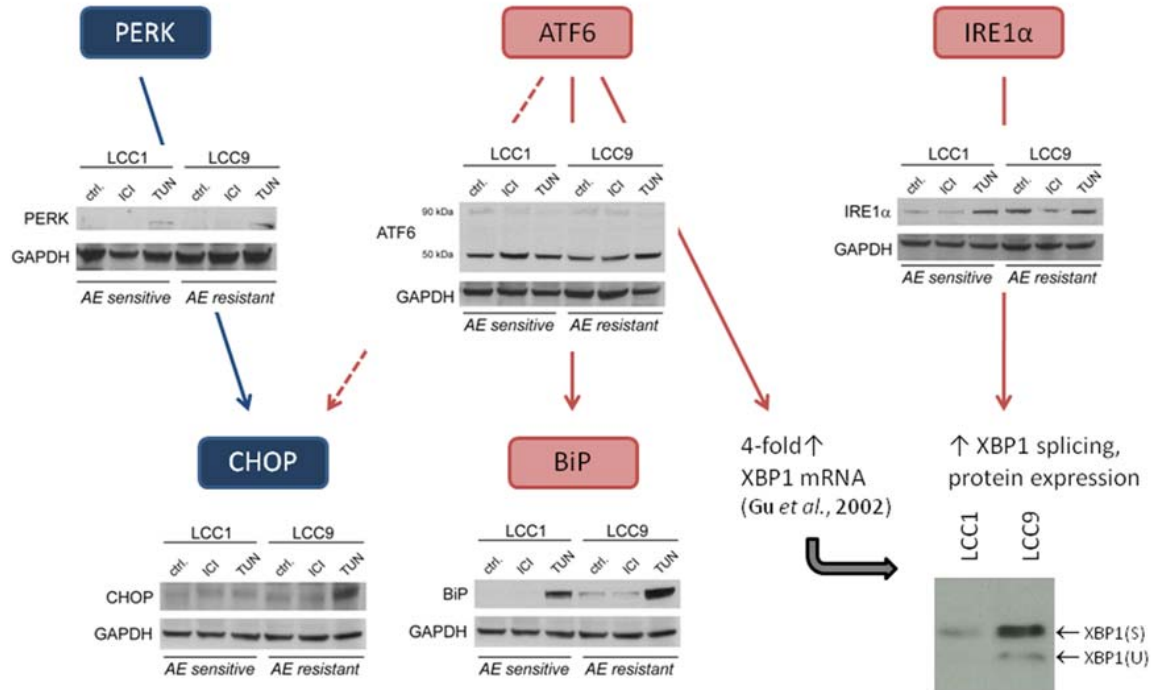


Fig 4: UPR signaling through ATF6 and IRE1α is enhanced in resistant LCC9 cells.

- Analyze autophagy and apoptosis at early (4-18 hrs), early-to-middle (18-36 hrs), and late stages (≥ 36 hs) using standard measures.

Currently, we are working on measuring UPR-related gene expression levels using a multiplex qPCR approach. Expression levels of the following genes will be measured: ATF6, IRE1α, PERK, BIP, and EDEM1. We are

also collaborating with the newly established Proteomics and Metabolomics Shared Resource facility at our institution to carry out the HPLC analysis to detect the mature LLOs to immature LLOs.

Expression levels of UPR-related protein expression levels were analyzed by Western blotting (Fig 3, 4). Fig 3 shows that autophagy is enhanced upon FAS treatment and/or XBP1 over-expression in ER+ breast cancer cell lines. The data in Fig 4 show that expression of PERK is not altered by either the acquisition of resistance or FAS treatment. In fact, PERK expression is undetectable in LCC1 and LCC9 cells except in the presence of the tunicamycin positive control. PERK's downstream effector CHOP/GADD153 is also not increased in resistant cells or induced upon FAS treatment. By contrast, active ATF6 (p50 cleavage product) is abundant in both cell lines and basal expression of its downstream effector BiP/GRP78 is increased in resistant LCC9 cells. This is consistent with BiP's role as a prosurvival factor and its association with drug resistance [6,7], and with our published data showing increased XBP1 mRNA in these cells [8]. Finally, basal IRE1 α expression is also increased in resistant LCC9 cells (Fig 4). Since unconventional splicing of XBP1(U) mRNA is only performed by IRE1 α [9], these data provide a rational explanation for our observation that XBP1(S) is the translated protein that is upregulated in LCC9 cells. Together, these new data suggest that ATF6- and IRE1 α -driven UPR (but not PERK) are essential mediators of endocrine resistance. A central role for XBP-1 is already evident in canonical UPR signaling, XBP1(T) being induced by the ATF6 arm and spliced in the IRE1 α arm.

Months 9-12:

Aim 1 – Address *in vivo* studies of the manipulations that are most informative from the *in vitro* studies.

- Evaluate hormone sensitivity by administration of E2 (0.72 mg) or TAM (5 mg) by s.c. intrascapular implantation of a 60-day release pellet, ICI 182,780 (0.5 mg *i.p.* depot once weekly) or the BCL2 inhibitor ABT-737 (75 mg/kg given daily *i.p.* for two weeks).
- Explore tumor latency and specific growth delay using the Kaplan-Meier approach, and study differences among groups by the Log-Rank test.

We have chosen to delay the *in vivo* studies to allow for a more detailed understanding of the system *in vitro*. This will also help us to design the most informative *in vivo* studies. We also have not yet obtained final approval to initiate the animal studies. This delay was on our part (not the DOD), we the animal protocol had expired and we first had to obtain new institutional approval for these studies from our IACUC. We obtained institutional approval and we will shortly submit the necessary paperwork to DOD for their approval. We will not initiate any animal studies on this award until we have final approval from DOD to proceed.

AIM 2.

Aim 2 – Studies to block BCL2 and MYC *in vitro*

- Use siRNA/small molecule inhibitors to block BCL2 and MYC in cells constitutively expressing XBP1(S) – both transfected cells and cells that over-express endogenous XBP1(S) – and determine their effects on FAS, 4OHT, and E2-withdrawal.

We have begun the studies using small molecule inhibitors of BCL2 and MYC. Fig 5 shows that the antiestrogen resistant LCC9 cells are more sensitive to growth inhibition by small molecule inhibitors of BCL2. The preliminary data in Fig 6 show that LCC9 cells are more sensitive to a small molecule inhibitor of myc. These studies are still on progress and will likely be updated further in the next annual report.

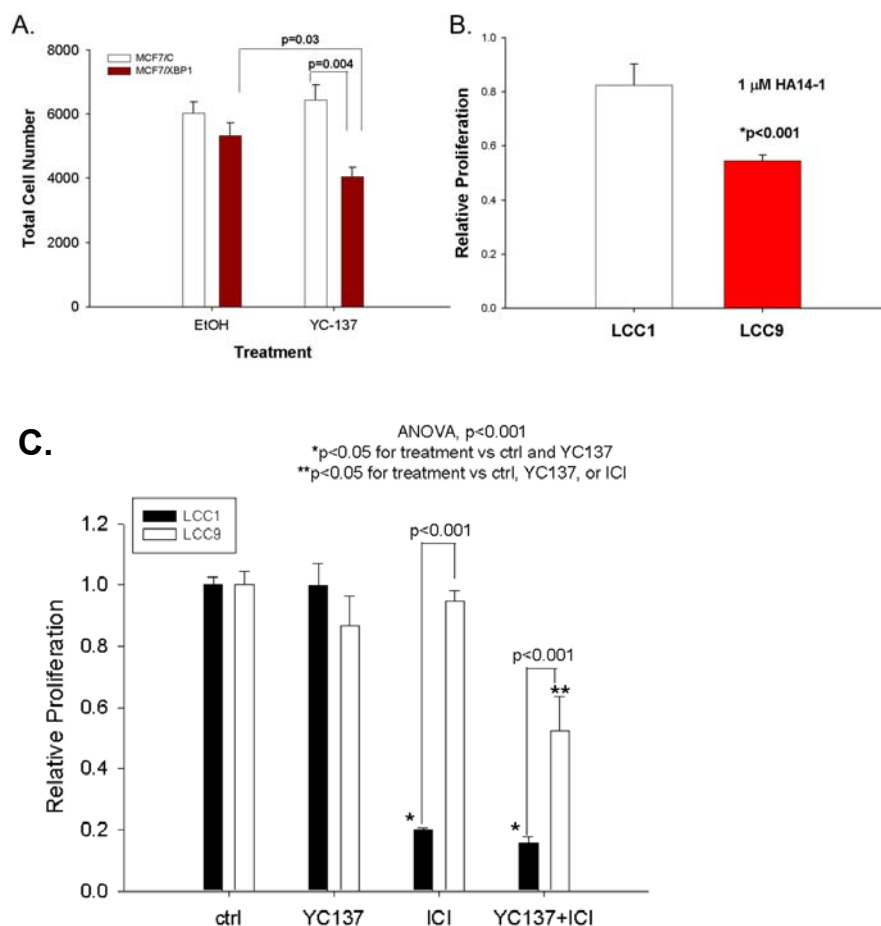


Fig. 5: AE-resistant cells are more sensitive to growth inhibition by small molecule BCL2 inhibitors. A, MCF7/XBP1; B, LCC1/LCC9 using HA14-1. C, LCC1/LCC9 using YC-137.

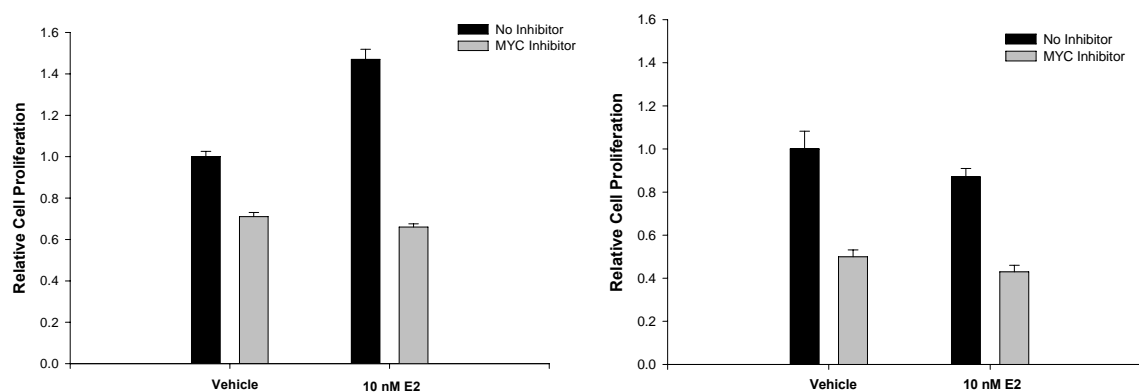


Fig 6: LCC9 cells were more sensitive to growth inhibition by small molecule MYC inhibitor (10058-F4, Calbiochem) and inhibits E2-mediated increase in cell proliferation in LCC1 cells. Left Panel, LCC1, Right Panel, LCC9.

REPORTABLE OUTCOMES

Papers and Meeting Reports*

- Shajahan, A.N., Riggins, R.B. & **Clarke, R.** “The role of X-box binding protein-1 in tumorigenicity” *Drug News Perspect* 22: 241-246, 2009.
- **Clarke, R.**, Shajahan, A.N., Riggins, R.B., Cho, Y., Crawford, A., Xuan, J., Wang, Y., Zwart, A., Nehra, R. & Liu, M.C. “Gene network signaling in hormone responsiveness modifies apoptosis and autophagy in breast cancer cells.” *J Steroid Biochem Mol Biol*, 114: 8-20, 2009.

*We include in the appendix reprints of those papers that are already published and for which we have proofs or reprints. We do not list here or include in the appendices any published abstracts, but can do so if requested.

CONCLUSIONS

We have made very good progress on the proposed work in our first year. The data strongly support our preliminary data on a central role for autophagy and UPR, and have shown that the PERK arm of the UPR is probably not a key player. The two remaining arms (the ATF6 arm that induces XBP1 transcription and the IRE1 α arm that splices XBP1) seem to be the most important. Our initial data showing that the resistant cells are more sensitive to BCL2 and MYC inhibitors is particularly interesting and important, as they suggests that our initial ideas about signaling are potentially on the right track. Furthermore, the potential that these small molecule inhibitors may be candidates for consideration as new drug therapies is now being directly support as worthy of further investigation.

REFERENCES

- 1 Jemal, A., Siegel, R., Ward, E., Murray, T., Xu, J., Smigal, C. and Thun, M. J. Cancer statistics, 2006. *CA Cancer J Clin*, 56: 106-130, 2006.
- 2 Foulkes, W. D., Metcalfe, K., Sun, P., Hanna, W. M., Lynch, H. T., Ghadirian, P., Tung, N., Olopade, O. I., Weber, B. L., McLennan, J., Olivotto, I. A., Begin, L. R. and Narod, S. A. Estrogen receptor status in BRCA1- and BRCA2-related breast cancer: the influence of age, grade, and histological type. *Clin Cancer Res*, 10: 2029-2034, 2004.
- 3 Thorpe, S. M. Estrogen and progesterone receptor determinations in breast cancer. Technology, biology and clinical significance. *Acta Oncol*, 27: 1-19, 1988.
- 4 Clarke, R., Leonessa, F., Welch, J. N. and Skaar, T. C. Cellular and molecular pharmacology of antiestrogen action and resistance. *Pharmacol Rev*, 53: 25-71, 2001.
- 5 EBCTCG Early Breast Cancer Trialists' Collaborative Group. Tamoxifen for early breast cancer: an overview of the randomized trials. *Lancet*, 351: 1451-1467, 1998.
- 6 Jiang, C. C., Mao, Z. G., very-Kiejda, K. A., Wade, M., Hersey, P. and Zhang, X. D. Glucose-Regulated Protein 78 Antagonizes Cisplatin and Adriamycin in Human Melanoma Cells. *Carcinogenesis*, 2008.

-
- 7 Virrey, J. J., Dong, D., Stiles, C., Patterson, J. B., Pen, L., Ni, M., Schonthal, A. H., Chen, T. C., Hofman, F. M. and Lee, A. S. Stress chaperone GRP78/BiP confers chemoresistance to tumor-associated endothelial cells. *Mol Cancer Res*, 6: 1268-1275, 2008.
 - 8 Gu, Z., Lee, R. Y., Skaar, T. C., Bouker, K. B., Welch, J. N., Lu, J., Liu, A., Zhu, Y., Davis, N., Leonessa, F., Brunner, N., Wang, Y. and Clarke, R. Association of interferon regulatory factor-1, nucleophosmin, nuclear factor-kappaB, and cyclic AMP response element binding with acquired resistance to faslodex (ICI 182,780). *Cancer Res*, 62: 3428-3437, 2002.
 - 9 Yoshida, H., Matsui, T., Yamamoto, A., Okada, T. and Mori, K. XBP1 mRNA is induced by ATF6 and spliced by IRE1 in response to ER stress to produce a highly active transcription factor. *Cell*, 107: 881-891, 2001.

LOOKING AHEAD

THE ROLE OF X-BOX BINDING PROTEIN-1 IN TUMORIGENICITY

by Ayesha N. Shajahan,
Rebecca B. Riggins and Robert Clarke

In poorly vascularized solid tumors, cancer cells face hypoxia and glucose deprivation that disrupt protein folding in their endoplasmic reticulum (EnR).¹ Abnormal accumulation of proteins in the EnR activates an adaptive mechanism called the unfolded protein response (UPR). Initially a compensatory mechanism allowing cells to recover normal EnR function, prolonged UPR may induce cell death. This is often dependent upon which arm of the UPR signaling pathway predominates. The UPR can also activate autophagy² but whether this is a pro-survival or prodeath autophagy is unknown since UPR activation leads to prodeath and prosurvival outcomes.³ Prolonged cell survival in nutrient-limiting conditions or following anticancer drug treatment is attained by coordinating the transcription of a complex array of genes in the UPR.⁴ X-box binding protein-1 (XBP-1), which undergoes unconventional splicing in the cytosol, is an obligate component in two arms of the UPR signaling pathway.^{5,6} Therefore, compounds that target XBP-1 may have therapeutic activity for the treatment of some cancers.

XBP-1 IN UPR

Transmembrane EnR proteins ATF6 (activating transcription factor 6), IRE1 α (inositol requiring enzyme 1 α), or IRE1 β , and PERK (double-stranded RNA-activated protein kinase [PKR]-like endoplasmic reticulum kinase) initiate UPR through different signaling pathways that include transcription factors and that lead in turn, to the coordinated expression of multiple UPR target genes (Fig. 1).^{7,8} Activated ATF6 increases

the messenger RNA (mRNA) level of XBP-1, while IRE1 α mediates the unconventional splicing of the XBP-1(U) mRNA, the unspliced form, to produce XBP-1(S), the spliced form that is a potent UPR transcriptional activator.^{6,9,10} XBP-1 belongs to the basic region/leucine zipper (bZIP) family.^{11,12} XBP-1(S) has a molecular weight of ~54 kDa; splicing removes a 26-bp intron and creates a translational frame-shift. XBP-1(U) has a molecular weight of ~33 kDa and acts as a dominant negative.^{13,14} While both XBP-1 isoforms contain DNA-binding domains, XBP-1(S) contains an activation domain and XBP-1(U) contains a degradation domain (Fig. 2). The basic region of the DNA-binding domain functions as a nuclear localization signal (NLS) but only XBP-1(U) contains a nuclear exclusion domain (NES) that enables the protein to shuttle in and out of the nucleus.¹⁵ Regulation of transcription by XBP-1(S) is a consequence of its homodimers activating specific cAMP response elements (CREs) with a conserved ACGT core sequence GATGACGTG(T/G) NNN(A/T)T—sometimes called the UPR element^{3,16} or the endoplasmic reticulum stress response element I (ERSE-I).¹⁷ XBP-1(U) acts as a dominant-negative inhibitor of the active XBP-1(S) species and can prevent an effective UPR.¹⁸

XBP-1 can induce EnR-targeted proteins including glucose regulated protein 78 (GRP78), also called binding immunoglobulin protein (BiP), which help resolve EnR stress and foster cell survival.¹⁹ Once UPR is initiated, accumulated unfolded protein is either correctly refolded, or degraded through the EnR-associated protein degradation (ERAD) system. However, if the unfolded protein level exceeds a threshold, the affected cells are committed to cell death, which is mediated by ATF4 and ATF6,

Pharmacological inhibitors of the XBP-1-mediated UPR pathway could be important anticancer therapeutic tools.

SUMMARY

Rapid growth of a tumor can overwhelm the vasculature that supplies it with nutrients and oxygen. Inside such tumors, cells undergo endoplasmic reticulum stress but can survive such adverse microenvironments by an adaptive mechanism called the unfolded protein response (UPR). X-box binding protein-1 (XBP-1) is a critical transcriptional activator of the UPR and is responsible for regulating the function of genes in cell survival. An unconventional splicing of the XBP-1(U) messenger RNA (mRNA) results in two proteins: XBP-1(S) that is often increased in a variety of human cancers and any translated proteins from the unspliced XBP-1(U) mRNA that acts as a dominant negative of endogenous XBP-1(S) action. In cancer cells, overexpression of XBP-1 can confer drug resistance by preventing drug-induced cell-cycle arrest and mitochondrial permeability and apoptosis, while downregulation of XBP-1 increases the sensitivity to killing by hypoxia. XBP-1 is also implicated in cellular de-differentiation, oncovirus infection and the epithelial-to-mesenchymal transition. Given that XBP-1 mediates a wide range of responses in tumorigenesis, it is logical to focus on XBP-1 as an anticancer therapeutic target. Furthermore, combining inhibitors of XBP-1 with other anti-UPR drugs may enhance the activity of some anti-neoplastic therapies.

Correspondence: R. Clarke, clarker@georgetown.edu

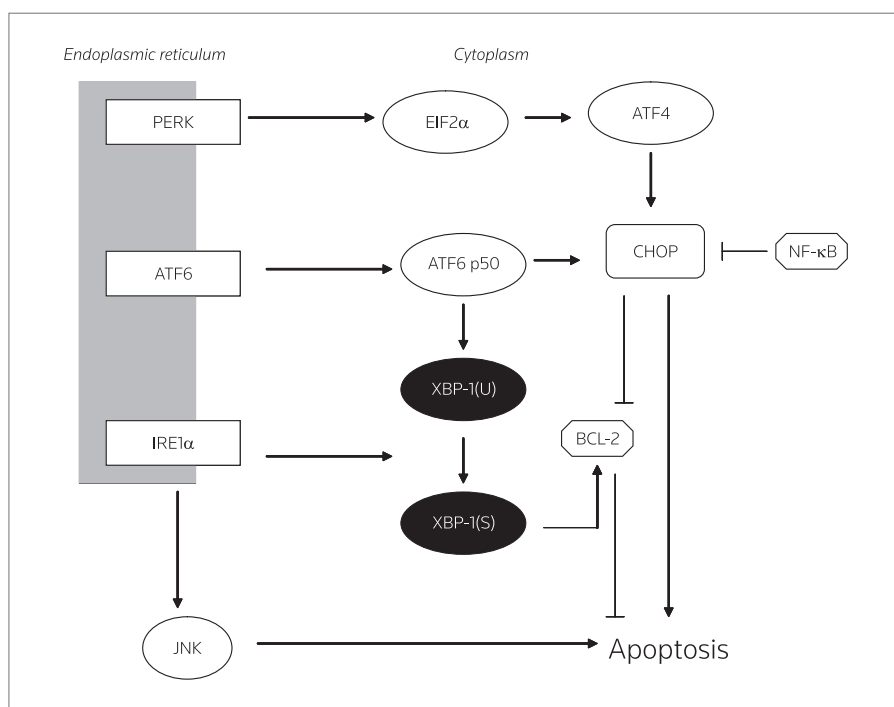


Figure 1. Schematic diagram of X-box binding protein-1 (XBP-1) in the unfolded protein response (UPR) signaling pathway. XBP-1 is located at a critical junction in this pathway that controls prodeath and pro-survival signals. PERK, double-stranded RNA-activated protein kinase (PKR)-like endoplasmic reticulum kinase; ATF, activating transcription factor; IRE1α, inositol requiring kinase 1 α; JNK, c-Jun N-terminal kinase; eIF2α, eukaryotic initiation factor 2 α; CHOP, C/EBP-homologous protein; NF-κB, nuclear factor-κB.

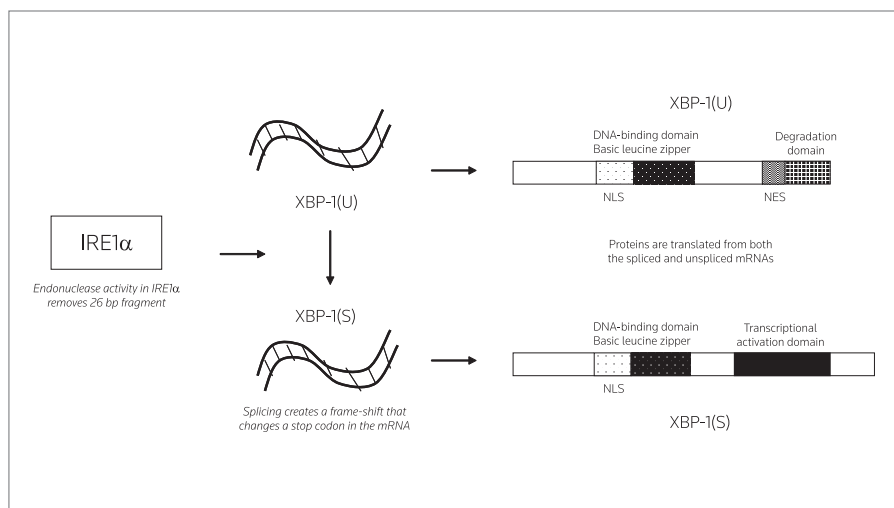


Figure 2. Unconventional splicing of X-box binding protein-1 (XBP-1). This splicing is considered unconventional because it occurs in the cytoplasm. Endonuclease activity in IRE1α (inositol requiring kinase 1 α) removes a 26-bp fragment from a conserved stem-loop region of XBP-1 RNA, resulting in two spliced variants. The sizes of the resulting proteins, XBP-1(U) and XBP-1(S), are ~33 kDa and ~54 kDa, respectively. The DNA-binding domain and nuclear localization signal (NLS) are present on both isoforms. The nuclear exclusion signal (NES) domain and the degradation domain are unique to XBP-1(U) while the transcriptional activation domain is unique to XBP-1(S).

as well as activation of the JNK/AP-1/Gadd153 or C/EBP-homologous protein (CHOP)-signaling pathway.²⁰ While CHOP negatively regulates antiapoptotic molecules such as BCL-2,²¹ the prosurvival nuclear factor-κB (NF-κB) can inhibit CHOP activation in breast cancer cells undergoing ER stress.²² Thus, the balance of GRP78 and CHOP expression regulates the UPR-mediated cell survival or cell death. Reduced susceptibility to cell death upon activation of the UPR may contribute to tumor progression.²⁰

XBP-1 IN CELL SURVIVAL

Apoptosis

Apoptosis is defined by morphological criteria related to organized chromatin condensation and fragmentation of the cell nucleus, accompanied by cleavage of DNA, formation of apoptotic bodies, cell shrinkage and ruffling of the cell membrane.^{23,24} Apoptosis is a form of programmed cell death, and primarily, two major pathways are involved: intrinsic and extrinsic pathways. The intrinsic (mitochondrial) pathway is regulated by the proapoptotic and antiapoptotic BCL-2 family members. This pathway involves changes in mitochondrial membrane permeability (MMP), release of cytochrome c, exposure of phosphatidylserine, and the eventual loss of plasma membrane integrity.²⁵ The extrinsic (cell surface receptor) pathway is dependent upon extracellular signals including tumor necrosis factor-α (TNF-α), Fas ligand, and TNF-related ligand TRAIL.^{24,26} Both of these pathways can activate caspases that cleave DNA and catabolize the cytoskeleton resulting in cell death.

Considering the association between UPR and tumor development, pharmacological inducers of ER stress that selectively promote apoptosis while disrupting the prosurvival UPR molecules could be promising anticancer therapeutic agents. The anticancer drug resveratrol, a naturally occurring polyphenolic compound highly enriched in grapes and red wine, has been reported to induce apoptosis in response to ER stress followed by XBP-1 splicing.²⁷ Bortezomib, a 26S proteasome ATPase inhibitor, was shown to induce apoptosis in multiple myeloma cells by inducing UPR and preventing prosurvival UPR components such as BiP and XBP-1.²⁸

Autophagy

In the process of autophagy, cytoplasmic contents are degraded by double/multi-membrane vacuoles or autophagosomes, normally resulting in the removal of defective or damaged organelles, e.g., mitochondria. Autophagy can be classified into three forms: microautophagy, chaperone-mediated autophagy and macroautophagy.²⁹ Autophagy can be either prodeath and act as an alternative cell death pathway to apoptosis, or prosurvival when extracellular nutrients or growth factors are limited.³⁰ Prosurvival outcomes likely reflect an adequate adjustment to stress, with energy/nutrients recovered from the organelles “digested” in the autophagosomes. Prodeath outcomes may arise when the self-digestion of autophagy leads to such a loss of organelles that the cell can no longer survive. In cancer cells, autophagy induction can accelerate cell death^{31,32} or promote cell survival,³³⁻³⁵ independently or in response to treatment with cytotoxic agents.

Morphologically, autophagy can be identified by the presence of autophagosomes, absence of marginated nuclear chromatin and/or the presence of cytoplasmic vacuoles using monodansylcadaverine.^{36,37} At the molecular level, autophagy can also be classified by assessing the cleavage of LC3, a mammalian homologue of yeast Atg8, accumulation of GFP-LC3-labeled autophagosomes,^{38,39} and degradation of p62/SQSTM1 by autophagosomes.^{38,40} UPR (initiated by XBP-1 splicing by IRE1 α) activation can induce autophagy through JNK activation and eIF2 α phosphorylation.² Other key regulators of autophagy are now known to include BCL-2 family members⁴¹⁻⁴³ and their interacting proteins such as Beclin-1/ATG6 (BECN1).⁴⁴ BCL-2 antiapoptotic proteins, which are regulated by XBP-1(S)⁴⁵ can block autophagy by inhibiting BECN1.⁴⁶ Monoallelic loss of the BECN1 locus occurs in > 40% of breast cancers⁴⁷ (and in MCF7 cells), and thus, modulating the XBP-1/BCL-2 pathway may be an effective mechanism for regulating autophagic cell death. The early events in autophagy may be reversible, while the later events may (or appear to) share mechanisms with other cell death pathways. A switch from autophagy

Table I. Genes regulated by X-box binding protein-1 (XBP-1) in breast cancer cells

Symbol	Gene name	Change	P value	# CREs
APBB2	amyloid beta (A4) precursor protein-binding	-1.3	0.001	1
BCL2	B-cell CLL/lymphoma 2	3.1	0.029	3
CRK	v-crk sarcoma virus CT10 oncogene homologue	-2.0	0.003	2
ESR1	estrogen receptor alpha (ER α)	2.8	0.040	0*
IL24	interleukin 24	-9.7	<0.001	1
MYC	v-myc myelocytomatosis viral oncogene homologue	1.6	0.04	1
PHLDA2	pleckstrin homology-like domain, family A, member 2	-3.3	0.004	2
S100A6	S100 calcium binding protein A6 (calcyclin)	2.3	0.001	1
XRCC6	X-ray repair complementing defective repair 6	1.6	0.016	1

*Several ATF6 (activating transcription factor 6) sites that may be regulated by ATF6:XBP1 heterodimers. CRE, cAMP response elements.

Modified from Gomez, B.P. et al. FASEB J 2007, 21(14): 4013-27, and reproduced with permission.

to apoptosis occurs, for example, following upregulation of BID.⁴²

XBP-1 AND CANCER PROGRESSION

XBP-1 is ubiquitously expressed in adult tissue. In breast tumors, higher XBP-1 mRNA is expressed in estrogen receptor α (ER α)-positive breast tumors than in ER α -negative breast tumors⁴⁸⁻⁵² and serial analysis of gene expression (SAGE) showed XBP-1 to be highly expressed in cancerous mammary epithelial cells.⁵³ Investigation of the transcriptomes of antiestrogen-responsive (MCF7/LCC1) and -resistant variants (MCF7/LCC9) of the MCF7 human breast cancer cell line revealed upregulation of the XBP-1 gene in MCF7/LCC9 cells compared with MCF7/LCC1 cells.⁵⁴ While these studies may not differentiate between XBP-1(U) and XBP-1(S) or the sum of these signals, XBP-1 isoforms have been recently shown to be differentially associated with outcome of endocrine therapy for breast cancer patients. Higher levels of dominant-negative XBP-1(U) favor apoptosis of tumor cells and higher levels of XBP-1(S) increase tumor cell survival.⁵⁵ We have shown that overexpression of XBP-1(S) in ER α -positive breast cancer cells leads to estrogen-independent growth and reduced sensitivity to growth inhibition induced by the antiestrogens.⁴⁵ Table I shows genes that are known to be regulated by XBP-1 in breast cancer cells. Immunohistochemical staining showed increased XBP-1 protein in the cytoplasm of cancer cells but almost none

in noncancerous breast tissue.⁵⁶ Thus, XBP-1 may promote human breast carcinogenesis through impairment of cell differentiation regulation.⁵⁷

XBP-1(S) and XBP-1(U) interact with the DNA-binding domain of ER α and the ER α -interacting regions on XBP-1(S) and XBP-1(U) have been mapped to two regions: the N-terminal bZIP and the C-terminal activation domain. Moreover, XBP-1(S) as well as XBP-1(U) increase ER α -dependent transcriptional activity in a ligand-independent manner¹⁶ by regulation of large-scale chromatin unfolding⁵⁸ while deletion of the N-terminal portion of XBP-1(S) and XBP-1(U) fully abolishes their ability to regulate ER α transcriptional activity.

Hypoxia

In solid tumors, hypoxia is a physiologically important cause of EnR stress. Hypoxia is associated with decreased local control, increased distant metastases and decreased overall survival in a variety of human tumors.⁵⁹ Downregulation of XBP-1 increases the sensitivity of transformed human cells to killing by hypoxia and severely impedes tumor growth without affecting angiogenesis.⁶⁰ Thus, targeting XBP-1 can be used as a therapeutic strategy to eliminate hypoxic cells and inhibit tumor growth.

Drug resistance

In breast cancer, overexpression of XBP-1(S) in ER-positive breast cancer cells prevents antiestrogen-induced cell-cycle arrest and cell death through the mitochondrial apoptotic pathway. XBP-1(S) also confers estrogen-independence and antiestrogen cross-resistance.⁴⁵ XBP-1 is rapidly induced in response to E2-stimulation^{61,62} and XBP-1(S) can bind to and activate ER α in a ligand-independent manner.¹⁶ These activities of XBP-1 are closely related to the complex biological consequences of initiating, or failing to initiate, an appropriate UPR.

Cell differentiation

EnR stress can cause de-differentiation of both primary and immortalized cells and this event may be instrumental in the survival and recovery function of the UPR.^{63,64} Cells adapt to stress by downregulating genes, which are involved in differentiation, at the levels of their transcription or translation.^{65,66} EnR stress may induce de-differentiation in those cells whose phenotype is associated with the synthesis of numerous proteins in the EnR. In thyroid cells, EnR induced de-differentiation is also associated with an epithelial-to-mesenchymal transition-like phenotype,⁶⁴ a hallmark for cancer progression. XBP-1 is known to be essential for the development of highly secretory exocrine cells and is believed to be involved in UPR-dependent EnR expansion.⁶⁷ Although the function of XBP-1 in membrane biogenesis in cancer cells is unknown, it is possible that XBP-1's ability to affect phospholipid biosynthesis may be part of an adaptive response in cancer cells that enable them to survive EnR stress.

Viral infection

Several viruses are known to initiate UPR in host cells following infection.⁶⁸⁻⁷¹ Among them are oncoviruses such as the human T-lymphotropic virus type 1 (HTLV-1) that is a causative agent of adult T-cell leukemia/lymphoma⁶⁹ and the Epstein-Barr virus (EBV) that is associated with Burkitt's lymphoma, breast and gastric cancer.^{68,72} XBP-1(S) can activate the transcription of HTLV-1⁶⁹ and induce the switch from latent to lytic EBV infection⁷² and thus, the coordination between viral activation and cell differentiation enables oncovirus-mediated carcinogenesis.

CONCLUSIONS

Under normal conditions, the EnR provides a unique location that assists in proper protein folding and assures that only correctly folded proteins advance in the secretory pathway. However, when a cell is deprived of nutrients or oxygen, such as the microenvironments deep inside a tumor, accumulation of proteins can occur in the EnR that can trigger UPR.⁷³ Although the UPR is a well-conserved adaptive mechanism that ensures proper protein folding or apoptosis, this process can also promote cell survival. UPR activation of ERAD may support the "reusing" of materials recovered from the degradation of misfolded proteins, which could also allow cells to survive when extracellular nutrient sources are limited. XBP-1 is a key gene that is induced by the UPR. XBP-1(S) can activate a variety of genes involved in protein maturation, degradation or EnR expansion that enables the cells to efficiently produce and secrete proteins. XBP-1 has also been linked to tumor cell responses to hypoxia, drug therapy, cellular differentiation and oncovirus infections. Thus, pharmacological inhibitors of the XBP-1-mediated UPR pathway could be important anticancer therapeutic tools.

ACKNOWLEDGEMENTS

This work was supported in part by a Department of Defense award W81XWH-08-1-0319 (RC) from the United States Army Medical Research and Materiel Command, and a Susan G. Komen for the Cure Fellowship award PDF0600477 (ANS).

REFERENCES

1. Brown, J.M. and Giaccia, A.J. *The unique physiology of solid tumors: opportunities (and problems) for cancer therapy.* Cancer Res 1998, 58(7): 1408-16.
2. Ogata, M., Hino, S., Saito, A. et al. *Autophagy is activated for cell survival after endoplasmic reticulum stress.* Mol Cell Biol 2006, 26(24): 9220-31.
3. Feldman, D.E., Chauhan, V. and Koong, A.C. *The unfolded protein response: a novel component of the hypoxic stress response in tumors.* Mol Cancer Res 2005, 3(11): 597-605.
4. Kaufman, R.J., Scheuner, D., Schroder, M., Shen, X., Lee, K., Liu, C.Y. and Arnold, S.M. *The unfolded protein response in nutrient sensing and differentiation.* Nat Rev Mol Cell Biol 2002, 3(6): 411-21.

5. DuRose, J.B., Tam, A.B. and Niwa, M. *Intrinsic capacities of molecular sensors of the unfolded protein response to sense alternate forms of endoplasmic reticulum stress.* Mol Biol Cell 2006, 17(7): 3095-107.
6. Yoshida, H., Matsui, T., Yamamoto, A., Okada, T. and Mori, K. *XBP1 mRNA is induced by ATF6 and spliced by IRE1 in response to ER stress to produce a highly active transcription factor.* Cell 2001, 107(7): 881-91.
7. Harding, H.P., Calton, M., Urano, F., Novoa, I. and Ron, D. *Transcriptional and translational control in the Mammalian unfolded protein response.* Annu Rev Cell Dev Biol 2002, 18: 575-99.
8. Ma, Y. and Hendershot, L.M. *The unfolding tale of the unfolded protein response.* Cell 2001, 107(7): 827-30.
9. Calton, M., Zeng, H., Urano, F. et al. *IRE1 couples endoplasmic reticulum load to secretory capacity by processing the XBP-1 mRNA.* Nature 2002, 415(6867): 92-6.
10. Lee, K., Tirasophon, W., Shen, X. et al. *IRE1-mediated unconventional mRNA splicing and S2P-mediated ATF6 cleavage merge to regulate XBP1 in signaling the unfolded protein response.* Genes Dev 2002, 16(4): 452-66.
11. Clauss, I.M., Gravalles, E.M., Darling, J.M., Shapiro, F., Glimcher, M.J. and Glimcher, L.H. *In situ hybridization studies suggest a role for the basic region-leucine zipper protein hXBP-1 in exocrine gland and skeletal development during mouse embryogenesis.* Dev Dyn 1993, 197(2): 146-56.
12. Liou, H.C., Boothby, M.R., Finn, P.W. et al. *A new member of the leucine zipper class of proteins that binds to the HLA DR alpha promoter.* Science 1990, 247(4950): 1581-4.
13. Lee, A.H., Iwakoshi, N.N. and Glimcher, L.H. *XBP-1 regulates a subset of endoplasmic reticulum resident chaperone genes in the unfolded protein response.* Mol Cell Biol 2003, 23(21): 7448-59.
14. Sriburi, R., Jackowski, S., Mori, K. and Brewer, J.W. *XBPI: A link between the unfolded protein response, lipid biosynthesis, and biogenesis of the endoplasmic reticulum.* J Cell Biol 2004, 167(1): 35-41.
15. Yoshida, H. *Unconventional splicing of XBP-1 mRNA in the unfolded protein response.* Antioxid Redox Signal, 2007, 9(12): 2323-33.
16. Ding, L., Yan, J., Zhu, J. et al. *Ligand-independent activation of estrogen receptor alpha by XBP-1.* Nucleic Acids Res 2003, 31(18): 5266-74.
17. Lacroix, M. and Leclercq, G. *About GATA3, HNF3A, and XBPI, three genes co-expressed with the oestrogen receptor-alpha gene (ESR1) in breast cancer.* Mol Cell Endocrinol 2004, 219(1-2): 1-7.

18. Lee, A.H., Iwakoshi, N.N., Anderson, K.C. and Glimcher, L.H. *Proteasome inhibitors disrupt the unfolded protein response in myeloma cells*. Proc Natl Acad Sci U S A 2003, 100(17): 9946-51.
19. Shuda, M., Kondoh, N., Imazeki, N. et al. *Activation of the ATF6, XBP1 and grp78 genes in human hepatocellular carcinoma: a possible involvement of the ER stress pathway in hepatocarcinogenesis*. J Hepatol 2003, 38(5): 605-14.
20. Kim, R., Emi, M., Tanabe, K. and Murakami, S. *Role of the unfolded protein response in cell death*. Apoptosis 2006, 11(1): 5-13.
21. McCullough, K.D., Martindale, J.L., Klotz, L.O., Aw, T.Y. and Holbrook, N.J. *Gadd153 sensitizes cells to endoplasmic reticulum stress by down-regulating Bcl2 and perturbing the cellular redox state*. Mol Cell Biol 2001, 21(4): 1249-59.
22. Nozaki, S., Sledge, G.W. Jr. and Nakshatri, H. *Repression of GADD153/CHOP by NF-kappaB: A possible cellular defense against endoplasmic reticulum stress-induced cell death*. Oncogene 2001, 20(17): 2178-85.
23. Riggins, R.B., Bouton, A.H., Liu, M.C. and Clarke, R. *Antiestrogens, aromatase inhibitors, and apoptosis in breast cancer*. In: Vitamins and Hormones, Vol. 71. Litwack, G. (Ed.) Elsevier Academic Press: London 2005, 71: 201-37.
24. Zhivotovsky, B. and Kroemer, G. *Apoptosis and genomic instability*. Nat Rev Mol Cell Biol 2004, 5(9): 752-62.
25. Goldstein, J.C., Waterhouse, N.J., Juin, P., Evan, G.I. and Green, D.R. *The coordinate release of cytochrome c during apoptosis is rapid, complete and kinetically invariant*. Nat Cell Biol 2000, 2(3): 156-62.
26. Brown, J.M. and Attardi, L.D. *The role of apoptosis in cancer development and treatment response*. Nat Rev Cancer 2005, 5(3): 231-7.
27. Park, J.W., Woo, K.J., Lee, J.T. et al. *Resveratrol induces pro-apoptotic endoplasmic reticulum stress in human colon cancer cells*. Oncol Rep 2007, 18(5): 1269-73.
28. Gu, H., Chen, X., Gao, G. and Dong, H. *Caspase-2 functions upstream of mitochondria in endoplasmic reticulum stress-induced apoptosis by bortezomib in human myeloma cells*. Mol Cancer Ther 2008, 7(8): 2298-307.
29. Klionsky, D.J. and Emr, S.D. *Autophagy as a regulated pathway of cellular degradation*. Science 2000, 290(5497): 1717-21.
30. Jin, S. *Autophagy, mitochondrial quality control, and oncogenesis*. Autophagy 2006, 2(2): 80-4.
31. Park, M.A., Yacoub, A., Sarkar, D. et al. *PERK-dependent regulation of MDA-7/IL-24-induced autophagy in primary human glioma cells*. Autophagy 2008, 4(4): 513-5.
32. Yan, C.H., Yang, Y.P., Qin, Z.H., Gu, Z.L., Reid, P. and Liang, Z.Q. *Autophagy is involved in cytotoxic effects of crotoxin in human breast cancer cell line MCF-7 cells*. Acta Pharmacol Sin 2007, 28(4): 540-8.
33. Apel, A., Herr, I., Schwarz, H., Rodemann, H.P. and Mayer, A. *Blocked autophagy sensitizes resistant carcinoma cells to radiation therapy*. Cancer Res 2008, 68(5): 1485-94.
34. Boya, P., Gonzalez-Polo, R.A., Casares, N. et al. *Inhibition of macroautophagy triggers apoptosis*. Mol Cell Biol 2005, 25(3): 1025-40.
35. Li, M., Jiang, X., Liu, D., Na, Y., Gao, G.F. and Xi, Z. *Autophagy protects LNCaP cells under androgen deprivation conditions*. Autophagy 2008, 4(1): 54-60.
36. Broker, L.E., Kruyt, F.A. and Giaccone, G. *Cell death independent of caspases: a review*. Clin Cancer Res 2005, 11(9): 3155-62.
37. Edinger, A.L. and Thompson, C.B. *Death by design: apoptosis, necrosis and autophagy*. Curr Opin Cell Biol 2004, 16(6): 663-9.
38. Klionsky, D.J., Abeliovich, H., Agostinis, P. et al. *Guidelines for the use and interpretation of assays for monitoring autophagy in higher eukaryotes*. Autophagy 2008, 4(2): 151-75.
39. Mizushima, N. and Yoshimori, T. *How to interpret LC3 immunoblotting*. Autophagy 2007, 3(6): 542-5.
40. Pankiv, S., Clausen, T.H., Lamark, T. et al. *p62/SQSTM1 binds directly to Atg8/LC3 to facilitate degradation of ubiquitinated protein aggregates by autophagy*. J Biol Chem 2007, 282(33): 24131-45.
41. Akar, U., Chaves-Reyez, A., Barria, M. et al. *Silencing of Bcl-2 expression by small interfering RNA induces autophagic cell death in MCF-7 breast cancer cells*. Autophagy 2008, 4(5): 669-79.
42. Lamparska-Przybylska, M., Gajkowska, B. and Motyl, T. *BID-deficient breast cancer MCF-7 cells as a model for the study of autophagy in cancer therapy*. Autophagy 2006, 2(1): 47-8.
43. Shimizu, S., Kanaseki, T., Mizushima, N., Mizuta, T., Arakawa-Kobayashi, S., Thompson, C.B. and Tsujimoto, Y. *Role of Bcl-2 family proteins in a non-apoptotic programmed cell death dependent on autophagy genes*. Nat Cell Biol 2004, 6(12): 1221-8.
44. Furuya, N., Yu, J., Byfield, M., Pattingre, S. and Levine, B. *The evolutionarily conserved domain of Beclin 1 is required for Vps34 binding, autophagy and tumor suppressor function*. Autophagy 2005, 1(1): 46-52.
45. Gomez, B.P., Riggins, R.B., Shajahan, A.N. et al. *Human X-box binding protein-1 confers both estrogen independence and antiestrogen resistance in breast cancer cell lines*. FASEB J 2007, 21(14): 4013-27.
46. Pattingre, S., Tassa, A., Qu, X. et al. *Bcl-2 anti-apoptotic proteins inhibit Beclin 1-dependent autophagy*. Cell 2005, 122(6): 927-39.
47. Liang, X.H., Jackson, S., Seaman, M., Brown, K., Kempkes, B., Hibshoosh, H. and Levine, B. *Induction of autophagy and inhibition of tumorigenesis by beclin 1*. Nature 1999, 402(6762): 672-6.
48. Bertucci, F., Houlgatte, R., Benziane, A. et al. *Gene expression profiling of primary breast carcinomas using arrays of candidate genes*. Hum Mol Genet 2000, 9(20): 2981-91.
49. Iwao, K., Matoba, R., Ueno, N. et al. *Molecular classification of primary breast tumors possessing distinct prognostic properties*. Hum Mol Genet 2002, 11(2): 199-206.
50. Perou, C.M., Sorlie, T., Eisen, M.B. et al. *Molecular portraits of human breast tumours*. Nature 2000, 406(6797): 747-52.
51. van't Veer, L.I., Dai, H., van de Vijver, M.J. et al. *Gene expression profiling predicts clinical outcome of breast cancer*. Nature 2002, 415(6871): 530-6.
52. West, M., Blanchette, C., Dressman, H. et al. *Predicting the clinical status of human breast cancer by using gene expression profiles*. Proc Natl Acad Sci U S A 2001, 98(20): 11462-7.
53. Porter, D.A., Krop, I.E., Nasser, S. et al. *A SAGE (serial analysis of gene expression) view of breast tumor progression*. Cancer Res 2001, 61(15): 5697-702.
54. Gu, Z., Lee, R.Y., Skaar, T.C. et al. *Association of interferon regulatory factor-1, nucleophosmin, nuclear factor-kappaB, and cyclic AMP response element binding with acquired resistance to Faslodex (ICI 182,780)*. Cancer Res 2002, 62(12): 3428-37.
55. Davies, M.P., Barraclough, D.L., Stewart, C. et al. *Expression and splicing of the unfolded protein response gene XBP-1 are significantly associated with clinical outcome of endocrine-treated breast cancer*. Int J Cancer 2008, 123(1): 85-8.
56. Zhu, Y., Singh, B., Hewitt, S., Liu, A., Gomez, B., Wang, A. and Clarke, R. *Expression patterns among interferon regulatory factor-1, human X-box binding protein-1, nuclear factor kappa B, nucleophosmin, estrogen receptor-alpha and progesterone receptor proteins in breast cancer tissue microarrays*. Int J Oncol 2006, 28(1): 67-76.
57. Fujimoto, T., Onda, M., Nagai, H., Nagahata, T., Ogawa, K. and Emi, M. *Upregulation and overexpression of human X-box binding protein 1 (hXBP-1) gene in primary breast cancers*. Breast Cancer 2003, 10(4): 301-6.

58. Fang, Y., Yan, J., Ding, L. et al. *XBP-1 increases ERalpha transcriptional activity through regulation of large-scale chromatin unfolding*. Biochem Biophys Res Commun 2004, 323(1): 269-74.
59. Vaupel, P., Kelleher, D.K. and Hockel, M. *Oxygen status of malignant tumors: Pathogenesis of hypoxia and significance for tumor therapy*. Semin Oncol 2001, 28(2 Suppl. 8): 29-35.
60. Romero-Ramirez, L., Cao, H., Nelson, D. et al. *XBP1 is essential for survival under hypoxic conditions and is required for tumor growth*. Cancer Res 2004, 64(17): 5943-47.
61. Tozlu, S., Girault, I., Vacher, S. et al. *Identification of novel genes that co-cluster with estrogen receptor alpha in breast tumor biopsy specimens, using a large-scale real-time reverse transcription-PCR approach*. Endocr Relat Cancer 2006, 13(4): 1109-20.
62. Wang, D.Y., Fulthorpe, R., Liss, S.N. and Edwards, E.A. *Identification of estrogen-responsive genes by complementary deoxyribonucleic acid microarray and characterization of a novel early estrogen-induced gene: EEIG1*. Mol Endocrinol 2004, 18(2): 402-11.
63. Yang, L., Carlson, S.G., McBurney, D. and Horton, W.E. Jr. *Multiple signals induce endoplasmic reticulum stress in both primary and immortalized chondrocytes resulting in loss of differentiation, impaired cell growth, and apoptosis*. J Biol Chem 2005, 280(35): 31156-65.
64. Ulianich, L., Garbi, C., Treglia, A.S. et al. *ER stress is associated with dedifferentiation and an epithelial-to-mesenchymal transition-like phenotype in PC C13 thyroid cells*. J Cell Sci 2008, 121(Pt. 4): 477-86.
65. Pirot, P., Naamane, N., Libert, F. et al. *Global profiling of genes modified by endoplasmic reticulum stress in pancreatic beta cells reveals the early degradation of insulin mRNAs*. Diabetologia 2007, 50(5): 1006-14.
66. Tsang, K.Y., Chan, D., Cheslett, D. et al. *Surviving endoplasmic reticulum stress is coupled to altered chondrocyte differentiation and function*. PLoS Biol 2007, 5(3): e44.
67. Lee, A.H., Chu, G.C., Iwakoshi, N.N., Glimcher, L.H. *XBP-1 is required for biogenesis of cellular secretory machinery of exocrine glands*. EMBO J 2005, 24(24): 4368-80.
68. Sun, C.C. and Thorley-Lawson, D.A. *Plasma cell-specific transcription factor XBP-1s binds to and transactivates the Epstein-Barr virus BZLF1 promoter*. J Virol 2007, 81(24): 13566-77.
69. Ku, S.C., Lee, J., Lau, J. et al. *XBP-1, a novel human T-lymphotropic virus type 1 (HTLV-1) tax binding protein, activates HTLV-1 basal and tax-activated transcription*. J Virol 2008, 82(9): 4343-53.
70. Umareddy, I., Pluquet, O., Wang, Q.Y., Vasudevan, S.G., Chevet, E. and Gu, F. *Dengue virus serotype infection specifies the activation of the unfolded protein response*. Virol J 2007, 4: 91.
71. Tiros, B., Iwakoshi, N.N., Lilley, B.N., Lee, A.H., Glimcher, L.H. and Ploegh, H.L. *Human cytomegalovirus protein US11 provokes an unfolded protein response that may facilitate the degradation of class I major histocompatibility complex products*. J Virol 2005, 79(5): 2768-79.
72. Bhende, P.M., Dickerson, S.J., Sun, X., Feng, W.H. and Kenney, S.C. *X-box-binding protein 1 activates lytic Epstein-Barr virus gene expression in combination with protein kinase D*. J Virol 2007, 81(14): 7363-70.
73. Koong, A.C., Chauhan, V. and Romero-Ramirez, L. *Targeting XBP-1 as a novel anti-cancer strategy*. Cancer Biol Ther 2006, 5(7): 756-9.

.....
 Ayesha N. Shajahan, Rebecca B. Riggins and Robert Clarke* work in the Department of Oncology at Lombardi Comprehensive Cancer Center, Georgetown University, Washington, D.C., U.S.A. *Correspondence: Robert Clarke, Ph.D., D.Sc., Department of Oncology, Lombardi Comprehensive Cancer Center, Georgetown University, School of Medicine, 3970 Reservoir Road, N.W., NRB W405, Washington, D.C. 20057, U.S.A. Tel.: +1 202 687 7237; Fax: +1 202 687 7505; E-mail: clarker@georgetown.edu.



Contents lists available at ScienceDirect

Journal of Steroid Biochemistry and Molecular Biology

journal homepage: www.elsevier.com/locate/jsbmbGene network signaling in hormone responsiveness modifies apoptosis and autophagy in breast cancer cells[☆]Robert Clarke^{a,b,*}, Ayesha N. Shajahan^a, Rebecca B. Riggins^a, Younsook Cho^a, Anatasha Crawford^a, Jianhua Xuan^c, Yue Wang^c, Alan Zwart^a, Ruchi Nehra^a, Minetta C. Liu^a^a Department of Oncology and Lombardi Comprehensive Cancer Center, Georgetown University School of Medicine, Washington, DC, USA^b Department of Physiology & Biophysics, Georgetown University School of Medicine, Washington, DC, USA^c Department of Electrical and Computer Engineering, Virginia Polytechnic Institute and State University, Arlington, VA, USA

ARTICLE INFO

Article history:

Received 25 November 2008

Accepted 31 December 2008

Keywords:

Antiestrogen

Autophagy

Apoptosis

Breast cancer

Cell signaling

Endoplasmic reticulum

Estrogens

Gene networks

Unfolded protein response

ABSTRACT

Resistance to endocrine therapies, whether *de novo* or acquired, remains a major limitation in the ability to cure many tumors that express detectable levels of the estrogen receptor alpha protein (ER). While several resistance phenotypes have been described, endocrine unresponsiveness in the context of therapy-induced tumor growth appears to be the most prevalent. The signaling that regulates endocrine resistant phenotypes is poorly understood but it involves a complex signaling network with a topology that includes redundant and degenerative features. To be relevant to clinical outcomes, the most pertinent features of this network are those that ultimately affect the endocrine-regulated components of the cell fate and cell proliferation machineries. We show that autophagy, as supported by the endocrine regulation of monodansylcadaverine staining, increased LC3 cleavage, and reduced expression of p62/SQSTM1, plays an important role in breast cancer cells responding to endocrine therapy. We further show that the cell fate machinery includes both apoptotic and autophagic functions that are potentially regulated through integrated signaling that flows through key members of the BCL2 gene family and beclin-1 (BECN1). This signaling links cellular functions in mitochondria and endoplasmic reticulum, the latter as a consequence of induction of the unfolded protein response. We have taken a seed-gene approach to begin extracting critical nodes and edges that represent central signaling events in the endocrine regulation of apoptosis and autophagy. Three seed nodes were identified from global gene or protein expression analyses and supported by subsequent functional studies that established their abilities to affect cell fate. The seed nodes of nuclear factor kappa B (NFκB), interferon regulatory factor-1 (IRF1), and X-box binding protein-1 (XBP1) are linked by directional edges that support signal flow through a preliminary network that is grown to include key regulators of their individual function: NEMO/IKKγ, nucleophosmin and ER respectively. Signaling proceeds through BCL2 gene family members and BECN1 ultimately to regulate cell fate.

© 2009 Elsevier Ltd. All rights reserved.

1. Introduction

Over 40,000 American women die of breast cancer each year [1]; incidence is broadly similar across the European Union when considered as a percentage of the population. In 2008, over 178,000 women will be diagnosed with invasive breast cancer in the U.S., almost 70% of which will be estrogen receptor-α positive (ER+; HUGO Gene Symbol=ESR1) [2,3]. The percentage of ER+ sporadic breast cancers increases linearly with age but even in pre-

menopausal cases the proportion is high; 62% at age ≤35 and 72% by age 49 [2–4]. Data from randomized trials and meta-analyses clearly show that all breast cancer patients derive a statistically significant survival benefit from adjuvant chemotherapy, and that all hormone receptor positive breast cancer patients benefit from adjuvant endocrine therapy [5–9]. For postmenopausal women, the benefit from adjuvant Tamoxifen (TAM) is comparable to that seen for cytotoxic chemotherapy. While 5 years of adjuvant TAM produces a 26% proportional reduction in mortality [8], many ER+ tumors eventually recur [10]. Since advanced ER+ breast cancer largely remains an incurable disease, resistance to endocrine therapies is a significant clinical problem.

Endocrine therapy is administered as an antiestrogen (AE) like Tamoxifen (TAM) or Fulvestrant (FAS; Faslodex; ICI 182,780), or as an aromatase inhibitor (AI) such as Letrozole or Exemestane. It is less toxic and potentially more effective therapy in the management of hormone-dependent breast cancers. Antiestrogens, and TAM in

[☆] Lecture presented at the '18th International Symposium of the Journal of Steroid Biochemistry and Molecular Biology', 18–21 September 2008, Seefeld, Tyrol, Austria.

* Corresponding author at: Room W405A Research Building, Department of Oncology, Georgetown University School of Medicine, 3970 Reservoir Rd, NW, Washington, DC 20057, USA. Tel.: +1 202 687 3755; fax: +1 202 687 7505.

E-mail address: clarker@georgetown.edu (R. Clarke).

particular, have been the “gold standard” first line endocrine therapy for over 30 years [11], clinical experience with this drug likely exceeding over 15 million patient years [10]. TAM increases both disease free and overall survival from early stage breast cancer, and it also reduces the incidence of invasive and noninvasive breast cancer in high-risk women [8,9]. Raloxifene, another antiestrogen, is effective in reducing the rate of postmenopausal bone loss from osteoporosis as well as the rate of invasive breast cancer [12]. Newer antiestrogens such as FAS show significant activity relative to TAM and some AIs [13,14]. Third generation AIs are now widely accepted as viable alternatives to AEs for first line endocrine therapy in postmenopausal women with metastatic disease; overall response rates are generally greater for AIs [15]. Importantly, Tamoxifen is the only single agent with demonstrated efficacy in both premenopausal and postmenopausal women with invasive breast cancer. Other AEs and all of the AIs require the complete cessation of ovarian function.

Of current interest is identification of the optimum choice and scheduling of AEs and AIs. Evidence clearly shows improvements in disease free survival for combined adjuvant therapy (an AI and an AE usually given sequentially) over single agent TAM [16–20]. However, the ability of AIs to induce a significant improvement in overall survival compared with 5 years of TAM alone is uncertain [15]. In terms of metastatic disease, recent data imply that response rates with an AI are either equivalent with or higher than with TAM [21,22]. Given the increasing number of endocrine treatment options, there is a clear need to optimize the selection and scheduling of agents for both early stage and advanced disease. Whichever way these controversies are eventually resolved, it is clear that both AIs and AEs will remain as key modalities in the management of ER+ breast cancers. Unfortunately, the inability of endocrine therapies to cure many women with ER+ disease will also remain.

1.1. Endocrine resistance: receptor phenotypes

Several resistance phenotypes are evident from both experimental models and clinical observations. The two primary receptor phenotypes are ER+ and ER–. These receptor-based phenotypes have been further stratified by addition of the estrogen-regulated receptor for progesterone (PGR; HUGO Gene Symbol = PGR). The degree of treatment benefit from endocrine therapy varies according to receptor phenotype. For example, approximately 75% of ER+/PGR+, 33% of ER+/PGR–, and 45% of ER–/PGR+ cases of metastatic breast cancer respond to TAM [10]. Endocrine responses in truly ER– tumors are probably relatively rare and of uncertain relevance, as they most likely reflect incorrect assessments of what may be very low ER and/or PGR expression values. Data from the Early Breast Cancer Trialists' Collaborative Group meta-analyses show that TAM therapy generates a non-significant 6% reduction in the 10-year risk of recurrence. A non-significant increase in the risk of death from any cause in patients with ER– breast cancer also was reported [8,9]. The real value of PGR, which is the only modification to this clinical prediction scheme for directing endocrine therapy to become routine in over 30 years (the value of directing endocrine therapy based on HER2 is still controversial), is largely limited to ER– tumors. It is general practice in the United States to treat all ER+ and/or PR+ invasive breast tumors with endocrine therapy. However, it remains impossible to predict whether an individual patient will receive benefit from treatment and the magnitude or duration of any benefit. Better predictors of each individual patient's endocrine responsiveness are clearly needed.

1.2. Endocrine resistance: pharmacological phenotypes

Several pharmacological phenotypes have been identified in experimental models of either human breast cancer cells growing *in vitro* or of xenografts in immune-deficient rodents [10]. These

phenotypes include (i) estrogen-independent (which appears equivalent to AI resistance but is not so for antiestrogen resistance [23]—some breast cancers can become resistant to an AE but still respond to an AI and *vice versa*); (ii) estrogen-inhibited (recently identified in MCF-7 models [24]); (iii) TAM-stimulated (identified first in MCF-7 xenografts [25,26]); TAM-unresponsive but FAS sensitive [27] (identified first in MCF-7 models and subsequently observed in clinical trials [13]); TAM and FAS crossresistant [28] (perhaps this is truly antiestrogen crossresistant and it is seen both clinically in patients and experimentally in MCF-7 models [13,29]). Other variations on these phenotypes likely occur but are beyond the scope of our discussion.

1.3. Clinical evidence for the prevalence of pharmacological resistance phenotypes

Obtaining direct clinical evidence for the prevalence of each of the pharmacological resistance phenotypes is challenging. We have previously noted the utility of applying clinical responses to TAM withdrawal in metastatic breast cancer as one means to define, at least in broad terms, the likely relevance of a series of pharmacological phenotypes [29]. This approach is somewhat limited, as the number of cases across all studies is modest ($n=241$). Furthermore, TAM withdrawal responses cannot readily distinguish between TAM-stimulation and estrogen-inhibition because each should predict for a clinical benefit. The latter would induce a benefit because many breast cancers contain significant concentrations of 17 β -estradiol, independent of both menopausal and ER/PGR status [10], sufficient to produce the estrogen-inhibited phenotype [24]. Indeed, the superiority of AIs over TAM in inducing clinical response strongly implies that over 75% of ER+/PGR+, at least 50% of all ER+ breast cancers irrespective of PGR expression, and 45% or more of ER–/PGR+ breast tumors are probably driven by adequate access to estrogen.

In our prior assessment, almost 9% of patients received an overall clinical response to TAM withdrawal (partial responses + complete responses). When disease stabilizations were included we estimated that less than 20% of patients received clinical benefit [29], suggesting that the sum of TAM-stimulated plus estrogen-inhibited clinical phenotypes may not account for the majority of resistant phenotypes in women. Of course, given the number of ER+ breast cancers arising every year, these phenotypes are relevant to a notable number of women. The major response to TAM withdrawal was clinically detectable disease progression – greater than 80% of cases – strongly implicating unresponsiveness as the primary clinical resistance mechanism to TAM. Whether these breast cancers are fully crossresistant to all endocrine therapies, or retain sensitivity to AIs, cannot be determined from this simple analysis.

Nomura et al. [30] took a different approach and assessed the responsiveness to estrogen and TAM in short-term primary cell cultures of $n=153$ ER+ breast cancer biopsies. This approach allowed the authors to separate the various pharmacological phenotypes; approximately 7% of ER+ primary cultures were stimulated by TAM and almost 3% were inhibited by physiological concentrations of estradiol—notably close to our estimate of 9% for the sum of these two clinical phenotypes.

It is important here to separate responses to physiological estrogens from those produced by pharmacological estrogen therapy. High dose estrogen therapy was used prior to the advent of TAM. As with all endocrine therapies, approximately 30% of all breast cancers (receptor status was not available when most of these studies were done) responded [31,32]. Side effects were unfavorable, probably explaining the switch to TAM that also induces responses in approximately 30% of all breast cancers (when receptor status is not considered). It is also likely that the mechanisms of action of pharmacological and physiological dose estrogens differ. Over 15 years

ago, we were the first to show that pharmacological concentrations of both estradiol and TAM induce changes in the membrane fluidity of breast cancer cells and that this correlates with changes in cell growth [33]. It is unlikely that membrane fluidity changes are major contributors to the action, either prosurvival or prodeath, of physiological estrogen exposures but they likely do contribute to the prodeath effects of pharmacological exposures.

2. Cell fate in the context of endocrine responsiveness

Therapeutic strategies for breast cancer generally aim to alter the balance between cell death and cell survival such that cancer cells (but ideally not normal cells) die. However, endocrine therapies consistently also induce a notable growth arrest in sensitive tumors. The relative importance of growth arrest and cell death remains unclear. To explore this issue, we will first discuss the forms of cell death and then compare the potential for cell death and cell growth arrest to contribute to endocrine responsiveness.

Cell death pathways include signaling to apoptosis, autophagy, mitotic catastrophe, necrosis, and senescence. Late events in cell death are reasonably well defined at the molecular (such as PARP cleavage) and cellular levels (including DNA disintegration). However, knowledge of the regulatory signaling upstream of these events, and how this signaling is integrated and processed, is now known to be incomplete. Mitochondrial function and integrity, regulated in part by BCL2 family members, are central to several forms of cell death [34–36].

2.1. Apoptosis

Apoptosis is a programmed cell death defined by morphological criteria related to organized chromatin condensation and fragmentation of the cell nucleus, accompanied by cleavage of DNA, formation of apoptotic bodies, cell shrinkage, and ruffling of the cell membrane [35,37,38]. Two major pathways are involved. The *intrinsic (mitochondrial) pathway* is regulated by the proapoptotic and antiapoptotic BCL2 family members; this pathway involves changes in mitochondrial membrane permeability (MMP), release of cytochrome c, exposure of phosphatidylserine on the outer leaflet of the plasma membrane, and the eventual loss of plasma membrane integrity [39]. The *extrinsic (cell surface receptor) pathway* is dependent upon extracellular signals including tissue necrosis factor- α (TNF α), Fas ligand, and TNF-related ligand TRAIL [37,38]. The intrinsic and extrinsic pathways activate caspases, the “executioners” of apoptosis, which cleave DNA and catabolize the cytoskeleton. Apoptosis is not a discrete process and occurs over time—early (4–18 h), middle (18–36 h), and late stages (≥ 36 h) are often described based largely on data from cell culture models. Changes in specific BCL2 family members (early events that can precede changes in MMP), changes in MMP, and the exposure of phosphatidylserine are generally interpreted as representing early-to-middle apoptosis. Cytoplasmic cytochrome c release from mitochondria, changes in propidium iodide staining, increased terminal transferase dUTP nick end labeling (TUNEL) and cleavage of the DNA repair enzyme PARP-1 are associated with late apoptosis or necrosis [35].

2.2. Autophagy

Autophagy is a lysosomal pathway where cytoplasmic contents are degraded by double/multi-membrane vacuoles or autophagosomes, normally resulting in the removal of defective or damaged organelles, e.g., mitochondria. A better understanding of the regulation of autophagy has recently begun to emerge; key regulators are now known to include BCL2 family members [40,41] and their

interacting proteins such as beclin-1/ATG6 (BECN1) [42]. BCL2 anti-apoptotic proteins can block autophagy by inhibiting BECN1 [36]. Since monoallelic loss of the BECN1 locus is seen in >40% of breast cancers [43] (and in MCF-7 cells), modulating BCL2 may be an effective mechanism for regulating BECN1-activated autophagy. Autophagy can be identified by the absence of marginated nuclear chromatin, the presence of cytoplasmic vacuoles using transmission electron microscopy or monodansylcadaverine [44,45], cleavage of the LC3B protein [46,47], and regulation of the p62/SQSTM1 protein [48]. Early events in autophagy may be reversible; later events may (or appear to) share mechanisms with other cell death pathways. For example, cleavage of ATG5 by caplain [49] or upregulation of BID [41] can cause a switch from autophagy to apoptosis.

Paradoxically, autophagy can act as a cell survival mechanism when extracellular nutrients or growth factors are limited, or as an alternative cell death pathway to apoptosis [50]. Prosurvival outcomes likely reflect an adequate adjustment to stress, with energy/nutrients recovered from the organelles “digested” in the autophagosomes. Prodeath outcomes may arise when the self-digestion of autophagy leads to such a loss of organelles that the cell can no longer survive. In cancer cells, autophagy induction can accelerate cell death [51–55] or promote cell survival [56–58], independently or in response to treatment with cytotoxic agents.

2.3. Mitotic catastrophe

Faulty DNA structure checkpoints, or the spindle assembly checkpoint, are key components of this form of cell death [59,60]. Disruption of the normal segregation of many chromosomes results in rapid cell death [59]. When this cell death does not occur, the cell can divide asymmetrically and produce aneuploid daughter cells [61] that can become neoplastic [59,61]. Thus, mitotic catastrophe is characterized by multinucleation.

2.4. Necrosis

Necrosis is a chaotic process marked by cellular edema, vacuolization of the cytoplasm, breakdown of the plasma membrane, and an associated inflammatory response caused by the release of cell contents into the surroundings. Increased permeability to trypan blue or other vital dyes, in the absence of organized chromatin condensation and DNA fragmentation, is characteristic of necrosis [44,62].

2.5. Senescence

Senescent cells are characteristically enlarged, flattened with vacuoles and a large nucleus, become permanently cell cycle arrested and unresponsive to mitogenic stimuli and express β -galactosidase [45,63]. Normally, as telomerase activity falls over time, successive telomere shortening limits proliferation and leads to “cellular senescence” or “mortality stage 1 (M1)”. Inactivation of p53 can bypass M1 growth arrest, producing critically short telomeres and massive cell death called “mortality stage 2 (M2)” or “crisis” [64].

2.6. Endocrine-induced cell death in breast cancer

Precisely how breast cancer cells die following estrogen withdrawal (or AI treatment) or AE treatment is unclear. Senescence may not be the dominant mechanism, since this process frequently involves DNA damage and p53 activation [38,45] but breast cancer cells respond to AEs and to estrogen withdrawal even if they have mutated p53 [35,65]. While apoptosis is clearly implicated [65–68], some of the apoptosis endpoints in prior studies may not

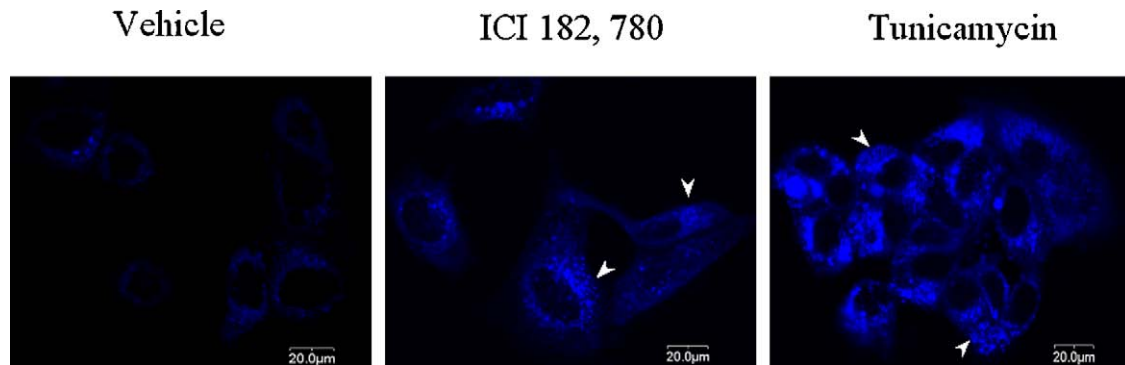


Fig. 1. Autophagy is enhanced upon FAS treatment in ER+ breast cancer cell lines. MCF-7 cells were treated with FAS (ICI 182,780), the endoplasmic reticulum stress and autophagy inducer tunicamycin (TUN), or ethanol control (vehicle) prior to staining with monodansylcadaverine (MDC). Increased MDC staining indicates that autophagy has been induced.

distinguish among earlier events more closely implicated with signaling initiated through autophagy. Autophagy has been implicated in response to endocrine therapy [69–71] and we also see the induction of significant autophagy associated with endocrine therapies.

Fig. 1 shows our ability to detect significant changes in the number of autophagosomes as measured by an increase in the presence of cytoplasmic vacuoles identified by monodansylcadaverine staining [44,45] (Fig. 1), increased cleavage of the LC3 protein [46,47], and reduced expression of p62/SQSTM1 [48,72–74] (Fig. 2). We have previously shown, as have others, that AE treatment and estrogen withdrawal are also accompanied by increases in the level of apoptosis and growth arrest in sensitive cells. Indeed, when restoring AE sensitivity in resistant cells we frequently see that sensitivity is reflected in the restoration of an ability of the antiestrogen (or estrogen withdrawal) to both increase apoptosis and reduce proliferation [75,76]. As shown in Figs. 1 and 2, and consistent with other reports [69–71], prodeath autophagy also is associated with the growth inhibitory effects of endocrine therapies in breast cancer cells. Thus in experimental models, cells responding to endocrine therapies concurrently experience an increase in cell growth arrest accompanied by both apoptosis and a prodeath autophagy.

2.7. Proliferation, cell death, and endocrine responsiveness

One of the most consistent observations in both experimental models *in vitro* and *in vivo* and in clinical specimens is the ability of endocrine therapies to induce a profound growth arrest in sensitive breast cancer cells. However, the relative importance of increased cell death compared with reduced proliferation is not entirely clear. In most endocrine sensitive experimental models, growth arrest and cell death concurrently occur and both clearly

contribute to the ability of endocrine therapies to affect changes in anchorage-dependent cell number, anchorage-independent colony formation, or tumorigenesis over time [27,77,78]. Less clear is their relative contribution in driving clinical responses to endocrine therapies. Growth arrest appears to be readily detected in breast tumors responding to endocrine therapy. Less clear is the ability to detect robust changes in apoptosis. Some investigators do [79], and some do not [66], see an association of apoptosis or a molecular marker(s) of apoptosis with clinical response. The latter is in marked contrast to studies in experimental models. For some studies, response is related to molecular markers of apoptosis such as BCL2 [79] or the FasL:Fas ratio [80]. Notably, expression of the anti-apoptotic molecule BCL2 is reduced in responsive breast tumors by 3 months of TAM treatment [79], while in breast tumors that remain after TAM therapy BCL2 expression is elevated [81]. However, as noted above, BCL2 can affect both an apoptotic and autophagic cell death and its measurement alone is likely a poor predictor of any specific cell death mechanism.

If cell death does not occur in clinical breast cancer this observation clearly requires explanation. Several possible explanations exist—in the absence of compelling experimental/clinical data supporting or eliminating these explanations we make no assessment at this time on their relative merits. Firstly, it should be noted that measures of apoptosis are usually the primary endpoints for assessing rates of cell death. Our previously published results, the data in Figs. 1 and 2, and the work of others [69–71] show that estrogen withdrawal or antiestrogens increase both the rates of apoptosis and autophagy in breast cancer models responding to treatment. We interpret this as a prodeath autophagy in sensitive cells, consistent with other reports [69–71]. It remains unclear whether autophagy or apoptosis dominates as the cell death mechanism or whether this varies among different breast cancer cells. Measuring apoptosis may be the wrong measure of cell death in tumors, or it may be an inadequate measure if it represents only some proportion of cells that die through this process. Secondly, apoptosis is often considered to comprise early, mid and late stages, and an irreversible commitment to cell death may not be robustly associated with endpoints other than those definitively reflecting late stage apoptosis. A measure of apoptosis that is not robustly associated with ultimate cell death could provide an incomplete assessment of the rate or extent of cell death. Thirdly, if the timing of apoptosis is as fast in patient tumors as it is *in vitro*, measurements taken before 24–36 h and/or after 36–48 h could miss many of the key events. The most sensitive cells would have been through apoptosis and be already dead and gone, and the rate of apoptosis could have returned to the basal level. Fourthly, duration of the apoptotic response may differ between basal apoptosis and drug-induced apoptosis. If drug-induced apoptosis leads to a more rapid death, the number of cells processing through apoptosis could increase

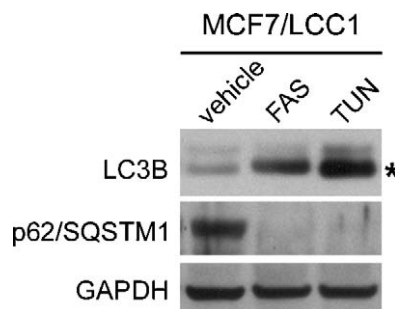


Fig. 2. Autophagy is enhanced upon FAS treatment in ER+ breast cancer cell lines. MCF7/LCC1 cells were treated with FAS, TUN, or vehicle prior to lysis and immunoblotting using standard procedures. Increased LC3BII (asterisk) and decreased p62/SQSTM1 expression both indicate that autophagy has been induced.

without any detectable change across time in the apparent rate of apoptosis.

Finally, a reduction in cell proliferation alone could be sufficient to account for some shrinkage of tumor size, as the rate of cell replacement might no longer be sufficient to account for cell loss from either a basal rate of cell death and/or loss to migration and metastasis. However, unless almost all growth arrested cells also undergo some form of cell death, it is unclear why growth arrest alone should lead to large and relatively rapid reductions in tumor size (over several weeks compared with often many years of presumably much longer growth prior to clinical detection and treatment). Growth arrest alone may be sufficient to account for good responses in some tumors, particularly where there is a high basal rate of cell death. However, it is not immediately clear how this applies to tumors with an inherently low rate of proliferation, whether because the growth fraction is large but cycling slowly or the growth fraction is small but proliferating rapidly. This is an area where mathematical modeling could be particularly useful, since it could compare the effect sizes needed for relative changes in proliferation and cell death to affect predicted overall tumor size over time.

While there is currently no definitive understanding of the primary cell death mechanisms in either experimental models or in breast tumors in women, or of the relative importance of endocrine therapy-induced changes in proliferation compared with cell death, there are potentially important implications for the underlying biology of the cancer cells. If the primary driver of response as seen in tumor shrinkage is a reduction in proliferation, this will leave many cells alive and still metabolically active. Surviving cells have the ability to adapt to the endocrine-induced stress and eventually overcome the proliferative blockade and grow—they will become resistant. This process seems unlikely to occur in many of those women who receive the clear long term benefit of a significant reduction in the risk of death [8,9].

Whether it is the growth arrested but surviving cells that eventually become resistant is unknown but it is certainly an intuitively satisfying hypothesis. Moreover, this hypothesis is supported by the ability to take sensitive cells in culture, expose them for prolonged periods to either estrogen withdrawal or AE treatment, and eventually induce an acquired resistant phenotype [27,28,77,82]. This process is accompanied by a profound and prolonged period of growth arrest prior to the emergence of resistant cells, a pattern consistent with the clinical progress of the disease in tumors that initially respond to therapy but that eventually recur—often a decade or more after the initiation of TAM treatment.

3. Molecular signaling and resistance

The precise mechanisms of resistance to an AE and/or an AI remain unclear, reflecting an incomplete understanding of the signaling affecting cell proliferation, survival, and death and their hormonal regulation in breast cancer. We have previously reviewed the mechanisms of resistance to AEs and to estrogen deprivation elsewhere in some detail [10,23,29], so we focus here on the molecular signaling aspects of resistance and how these may be integrated and explored using emerging technologies. We will focus primarily on signaling to cell death—signaling to regulate proliferation in the context of endocrine responsiveness will be the subject of a separate review.

The primary technologies that have matured sufficiently to enable global approaches to network modeling include gene expression microarrays, ChIP-on-chip, SNP chips, high-throughput DNA sequencing, and array CGH. Each of these technologies has reached a high level of maturity, and each is characterized by the generation of very high dimensional data on each sample

whether the read-out be genomic or transcriptomic data; this also is true of the emerging high-throughput proteomic technologies. The remarkable volume of data, and the diversity of biological information that informs the interpretation of these data, has begun to transform the fields of biostatistics, computer science, and bioinformatics. However, the properties of these datasets are often not fully understood nor are the challenges these properties provide for data analysis and network modeling. Readers interested in exploring some of these challenges can read recent reviews [83,84]. Here we will address briefly several approaches to the use of these data for network modeling.

3.1. A network signaling hypothesis of endocrine responsiveness

Estrogen-independence and AE resistance are complex phenotypes and both genomic and non-genomic activities are implicated [10,33,85]. We consider it unlikely that endocrine resistance in ER+ tumors is driven by a single gene/signaling pathway. Unlike many previous single gene/pathway studies, our central hypothesis invokes a gene network that confers diversity and redundancy in signaling [10,86]. The cell death/survival network incorporates specific signaling as affected by estrogen and AE modification of ER α function. Thus, AEs regulate this network differently than other agents such as cytotoxic drugs.

Signaling leads first to the reversible initiation of several cell death/survival signaling pathways within the network. The irreversible machinery of cell destruction is activated at some later point. This machinery may induce common outcomes – such as activation of effector caspases and DNA/plasma membrane disintegration – independent of the early specific initiating signals. Hence, we envision multiple concurrent signals processing through this network, some prosurvival and some prodeath, with cell fate reflecting the dominant signaling. In endocrine resistant cells, endocrine regulation and/or function of components of this network are changed and prodeath signals are either no longer induced or dominant.

This cell fate signaling network hypothesis is intuitively logical and certainly testable. Evidence that cells induce prosurvival signaling in an attempt to circumvent stressors implies that some cells are successful and ultimately survive whereas others are unsuccessful and die. Thus, the balance between prosurvival and prodeath signaling is likely the final arbiter of cells fate [83]. While this remains an area of active investigation, we first discuss the basic principles of network modeling and then provide an example of a seed-gene network of endocrine-regulated signaling in endocrine responsiveness.

3.2. Basic concepts of gene networks

Cellular signaling occurs more in the context of interactive networks than through linear pathways [83]. The basic topology of a network is defined by nodes (genes/proteins) and their interconnections (edges). Interconnections are multi-faceted and include one-to-one, one-to-many, or many-to-one relationships, and feed-forward or feed-back loops. The dynamic activity of a network is constrained by the various forms of interactions, and the network behaves only in certain ways and controlled manners in response to changing cellular conditions or external stimuli [87]. While often built solely from gene expression microarray data, these data are high dimensional and contain spurious correlations that can confound simple solutions for network building [83,84]. Relevant events also occur in the genome and proteome, some of which can affect the transcriptome. For example, a transcription factor (TF) may be activated by phosphorylation and bind to responsive elements in the genome but the regulation of its downstream targets is seen in the transcriptome [83]. An example of this relationship is

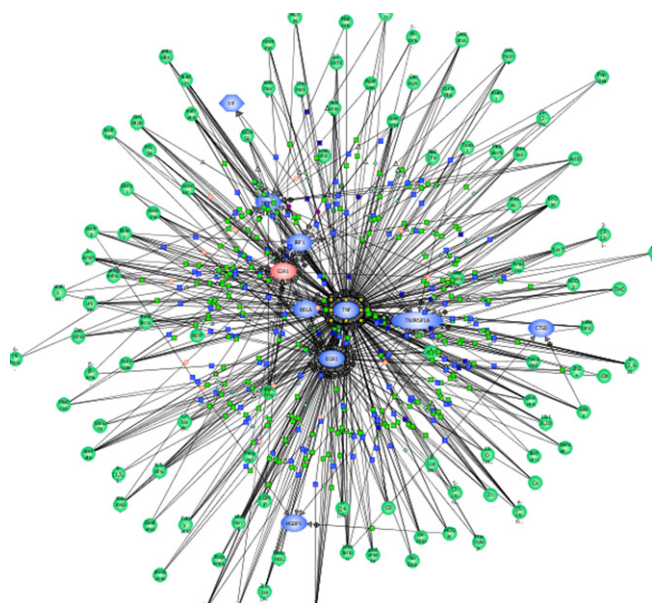


Fig. 3. Illustration of the complex and challenging nature of pathway analysis. Genes identified as being differentially expressed in resistant MCF7/LCC9 cells by SAGE and gene expression microarray were analyzed by Pathway Architect (Stratagene) to identify relationships *in silico*.

the ligand-independent activation of ER α following its phosphorylation on SER118 by MAPK [88].

Simplistically, there are two basic approaches to network modeling of high dimensional data: top-down and bottom-up. The former is probably the most widely used approach as several accessible commercial software packages are available that make this an easy task to perform without the need for training in biostatistics or bioinformatics. These packages often apply various implementations of gene ontologic and semantic search algorithms that identify cellular functions and pathways to which individual nodes are assigned; these data are then graphically represented.

The solutions produced by several popular top-down algorithms are often characterized by representations of tens-to-hundreds of nodes linked by hundreds-to-thousands of edges, making interpretation challenging (Fig. 3). Whether the algorithms address the confounding properties of high dimensional spaces, such as the curse of dimensionality or the confound of multimodality, or incorporate the critical aspects of cellular context and alleviate the trap of self-fulfilling prophecy, is not clear [83]. Among the additional challenges are the incompleteness of relevant biological knowledge and the annotation error rate in the source databases searched by these algorithms [83]. Nonetheless, these approaches can be useful when carefully applied and their limitations fully understood, and when experts from both the biological and mathematics domains combine expertise to assess the validity of the solutions. Currently, such approaches probably have most to offer in the area of hypothesis generation, rather than in the construction of truly biologically meaningful signal transduction networks.

3.3. The “seed-gene” approach to network modeling

The bottom-up approach is generally referred to as the “seed-gene approach” to network modeling [89]. This approach requires the extraction of a small number of seed genes from within the primary data; these genes are then used to grow the network in several ways. We will not address all the various approaches in this review but provide a few brief examples. Various modeling methods can be applied to find and link adjacent nodes, growing the network *de novo*. Local subnetworks can be identified and overlaid or linked to

the initial seed genes. A simple approach is the incorporation of a canonical pathway (which may be a subnetwork in what would be a final and much broader network) when it is known to be relevant in the cellular context under study and where incorporating the nodes and edges of the canonical pathway members is consistent with statistical properties of the growing model topology.

Knowledge of how a gene (node) affects the expression/function of another node provides directional connectivity information that can be applied to the interacting nodes. Transcription networks can be grown (or transcriptional edges between nodes in a network that incorporates other biological knowledge) by linking TFs to their downstream targets. These targets can be predicted using specific algorithms [90–93]; where possible it is preferable to incorporate functional data such as that obtained from ChIP-on-chip arrays [91]. Thus, interacting nodes can be identified along with the directionality of their edges as the seed-gene network is grown.

The most labor intensive approach is to derive experimentally nodes and edges, growing the network using definitive laboratory-derived knowledge. Where additional high-throughput data are already available, such as ChIP-on-chip, this is preferable. Currently, functional data is probably more often obtained one gene at a time, using standard molecular methods such as gene knock-down and overexpression. This laborious approach is becoming supplanted by the emerging functional genomic methods such as siRNA, ribozyme, or antisense libraries that can test experimentally the contribution of hundreds to thousands of genes. These methods enable investigators to extract concurrently nodes that experimentally generate biologically appropriate changes in the phenotype under investigation.

Once seeds and their edges are identified, and functional biological metadata obtained, interactive models can be grown using neural network and other machine learning tools. Several models have been proposed to reveal the behaviors of regulatory networks from gene expression data [22,23] including Boolean networks [24–26], Bayesian networks [27–30], linear additive regulation models [31,32], state-space models (SSMs) [33,34], and recurrent neural networks (RNN) [35,36]. However, these methods use only mRNA expression data to infer networks.

Integrated approaches have been recently proposed to learn transcriptional regulation from various data sources [27,30,37–43]. An iterative search on mRNA expression and ChIP-on-chip data [37], or the incorporation of expression profiles, ChIP-on-chip, and motif data [41] have each been used in yeast to discover transcriptional networks. Several linear models or matrix decomposition methods have also been proposed [43–46]. Network component analysis (NCA) is a notably powerful approach [45] but NCA and these other methods cannot easily infer regulatory networks in biological systems more complex than yeast.

Other limitations exist in network modeling. Complete biological knowledge for topology estimation (node–node edges and directionality), such as high-throughput ChIP-on-chip data or functional data from laboratory experiments, are often not (or only partially) available for human cells. When heterogeneous data sources are integrated for computational inference, the consistency of different data sources is often inadequate or unknown. Topological knowledge also comes from biological experiments, which often contains false positives/negatives that can lead to incorrect network inference.

4. Seed-gene model for cell signaling and the regulation of cell fate

While we continue to develop new methods for network modeling, we have yet to report our modeling approaches to our own expanding data sets. Hence, we will here describe our initial studies

on the use of seed genes and experimental data to construct a simple wiring-diagram of our initial seed-gene network. The inability to induce signaling to irreversible cell death is a central component of drug resistance [94]. Thus, we propose that cells possess a common cell death/survival regulatory decision network of integrated and/or interacting pathways (see above).

Prior to building network models, it is necessary to extract initial nodes (seed genes) from which a network can be built [89]. Since ER is a TF and regulates other functionally relevant TFs that influence endocrine responsiveness and cell fate, selecting a small number of TFs as seed genes is reasonable for network modeling. The full list of *relevant* ER-regulated TFs that may affect cell fate is unknown. Nonetheless, our published data support the central hypothesis that that IRF1 [65,95–97], XBP1 [76,95] and NFκB (RELA) [75,95] are key regulatory nodes or control key modules in this network. Moreover, our experimental data in endocrine sensitive and resistant breast human cancer cells now allow us to map their edges and directionality, in an appropriate cellular context, with some confidence.

4.1. X-box binding protein-1 (XBP1) and the unfolded protein response (UPR)

UPR is a central component of the endoplasmic stress response [98], an adaptive signaling pathway that allows cells to survive the accumulation of unfolded proteins in the endoplasmic reticulum lumen [99]. Initially a compensatory mechanism allowing cells to recover normal endoplasmic reticulum function, a prolonged UPR may induce cell death. UPR, which can be induced by cellular stressors such as hypoxia, is activated by each of three molecular sensors: IRE1α, ATF6, PERK [100]. XBP1's *unconventional* splicing (occurs in the cytosol) by IRE1α is an obligate component in both IRE1α- and ATF6-induced UPR [100,101]. The UPR (initiated by XBP1 splicing by IRE1α) can activate autophagy [102]. Whether this is a pro-survival or prodeath form of autophagy is unknown, since UPR activation also can induce both prodeath and prosurvival outcomes [103].

XBP1 is a transcription factor that belongs to the basic region/leucine zipper (bZIP) family [104,105]. The unspliced form, XBP1(U), has a molecular weight of ~33 kDa and acts as a dominant negative of spliced XBP1 [106,107]. The spliced form, XBP1(S), has a molecular weight of ~54 kDa; splicing removes a 26 bp intron and creates a translational frame-shift. Regulation of transcription by XBP1(S) is a consequence of its homodimers activating specific cAMP response elements (CREs) with a conserved ACGT core sequence GATGACGTG(T/G)NNN(A/T)T—sometimes called the UPR element [103,104,108]. XBP1(S), which is implicated in affecting plasma cell differentiation [109], is essential for fetal survival, neurological development, bone growth, immune system activation, and liver development [110,111]. XBP1 is also rapidly induced in response to estrogen-stimulation [112,113]. Consistent with the work of others [108], we have shown that XBP1(S) can bind to and activate ERα in a ligand-independent manner (Fig. 4).

We have recently shown that XBP1(S) confers E2-independence (effectively an AI resistant phenotype) and AE crossresistance (TAM and FAS crossresistance) in both MCF-7 and T47D human breast cancer cells [76]. This activity appears to be driven primarily by XBP1(S), as introduction of the full-length XBP1 cDNA in either MCF-7 or T47D cells generates predominately the XBP1(S) protein. This observation suggests that the basal activity of IRE1α is already adequate and that XBP1(S) is the rate limiting protein. XBP1 is the only known substrate for the IRE1α endonuclease and only IRE1α can splice mammalian XBP1. Since XBP1 splicing is thought to function primarily within the UPR, breast cancer cells may be primed to respond to multiple stressors by activating a prosurvival induction of UPR.

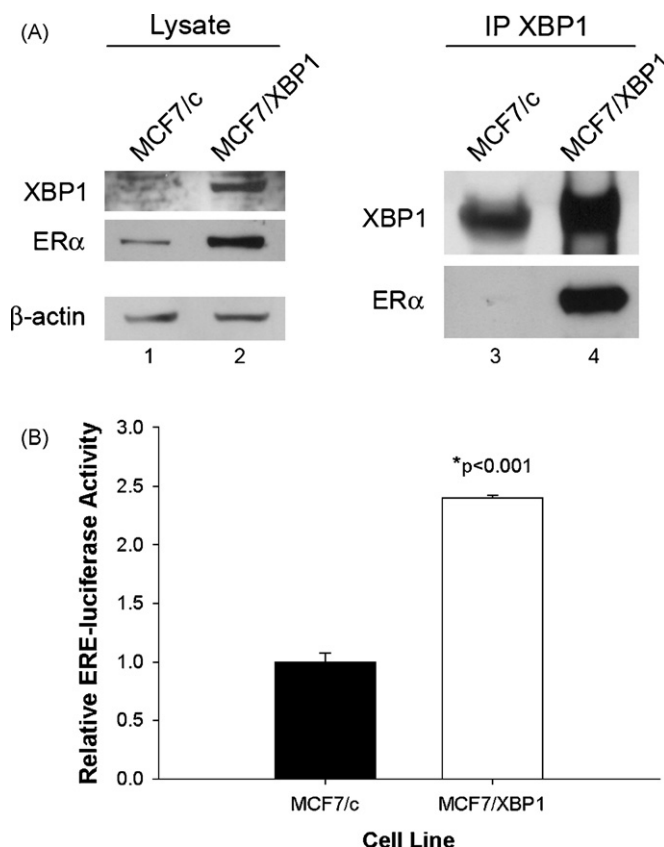


Fig. 4. Physical association of XBP1 and ERα is accompanied by robust ERE-driven transcriptional activity in MCF7/XBP1 cells. (A) MCF-7 cells stably expressing XBP1 cDNA or the empty vector control (c) were treated with FAS or ethanol control (ctrl.) vehicle prior to lysis and immunoblotting (lanes 1 and 2) or co-immunoprecipitation of XBP1 and ERα (lanes 3 and 4) using standard procedures. (B) MCF7/c and MCF7/XBP1 cells were transiently co-transfected with plasmids encoding 3xERE-luciferase and pRLSV40-Renilla for 24 h prior to lysis and promoter-reporter luciferase assay by standard methods. Data are presented as mean relative ERE-luciferase activity \pm SE for a representative experiment performed in triplicate, * $p < 0.001$.

4.2. Interferon regulatory factor-1 (IRF1)

RFLP linkage analysis assigned the IRF1 gene to 5q23-31; more definitive studies identified the locus as 5q31.1 [114]. IRF1 was initially identified because of its transcriptional activation of type I interferon (IFN) genes. We first showed the ability of interferons to sensitize breast cancer cells to TAM over 20 years ago [115]. More recently, IRF1 was implicated in T-cell development [116], and it is now known also to coordinate expression of the immunoproteasome [117], to regulate human telomerase activity [118,119], and to regulate key aspects of DNA damage repair [120,121]. Loss of IRF1 increases tumorigenicity in mouse models driven by ras or loss of p53 [122]. These activities may reflect IRF1's ability to signal to apoptosis [123], which can occur in a p53-dependent or -independent manner [120,124], with or without induction of p21^{cip1} [124] or p27^{kip1} [125], and through caspase-1 [120], caspase-3 [96], caspase-7 [96,126], caspase-8 [96,127], and/or FasL [128].

Following our initial observations of IRF1's likely role in breast cancer [129–131] and antiestrogen resistance [129], we confirmed its functional involvement using a dominant negative approach (dnIRF1) [65]. IRF1 and dnIRF1 induce opposing effects on proliferation *in vitro* and tumorigenesis *in vivo* through regulation of caspases-3/7 and caspase-8 activities [96]. These observations are consistent with the effects of inoculating an adenoviral vec-

tor containing IRF1 directly into mouse mammary tumors [132]. While p53-dependent apoptosis occurs in the breast [133], T47D cells express mutant p53 and our data show that intact p53 is not required for the proapoptotic actions of IRF1 [65,96]. In AE sensitive breast cancer cells, inhibition of AE-induced IRF1 activity by dnIRF1 is accompanied by reduced proapoptotic activity [65]. These observations on IRF1 and AE responsiveness have been confirmed and extended by others in both normal [134] and other neoplastic breast cell culture models [135,136]. IRF1, which can signal through both p53-dependent and -independent mechanisms [120,124], provides a new and potentially important signaling molecule for integrating and regulating breast cancer cell survival in response to AEs.

4.3. Nuclear factor kappa B (NFκB)

The NFκB p50/p65 heterodimer complex comprises two homologous proteins; the p50 product of its p105 precursor (NFκB1; chromosome 4q24) and the p65 (RELA; 11q13). NFκB is maintained in the cytosol in an inactive state, bound with members of the IκB family that inhibit nuclear transport or block NFκB's nuclear translocation signal [137]. Activation usually proceeds by the IKK kinase complex phosphorylating IκB, resulting in IκB ubiquitination and degradation [138]. NFκB (RELA/NFκB1) is implicated in several critical cellular functions [139]. Reflecting its regulation by both estrogen and growth factors [140,141] that are involved in endocrine resistance [10,142], normal mammary gland development is dependent upon NFκB [143]. Increased NFκB activity arises during neoplastic transformation in the rat [144] and mouse mammary gland [145]. Upregulation of NFκB is associated with E2-independence [140,143]. The predominant NFκB form in breast cancer cell lines is RELA/NFκB1; the p52 family member also is expressed in some breast cancers [146].

We have shown that NFκB can confer estrogen-independence and AE crossresistance [75,95,147]. Estrogen-independent growth *in vitro* and *in vivo* is supported by increases in both NFκB DNA binding activity and expression of BCL3 [147]. This study highlights the functional implications of NFκB in AI resistance. Expression of IκBα (NFκB repressor) in estrogen-independent LCC1 cells (LCC1 cells are derived from MCF-7 and are estrogen-independent but sensitive to AEs [148]), which have increased NFκB activation relative to estrogen-dependent MCF-7 cells, eliminates their estrogen-independence *in vivo*.

LCC9 cells (TAM and FAS crossresistant variant of LCC1 [28]) exhibit a further increase in NFκB expression and activation relative to LCC1 cells, apparently driven by increased expression of NEMO (IKKγ) [75]. These observations imply that the level of activity in LCC1 cells is adequate for estrogen-independence but not AE resistance. Increased activation of NFκB [95] and loss of its antiestrogenic regulation in LCC9 cells [75] suggest that these cells might be dependent upon NFκB for survival/growth. Thus, we compared the growth response of LCC1 and LCC9 cells to vehicle or parthenolide (300 and 600 nM), a small molecule inhibitor of NFκB [149]. Parthenolide produces a dose-dependent inhibition of MCF7/LCC9 cells with an apparent IC₅₀ of approximately 600 nM ($p < 0.01$ at both 300 and 600 nM parthenolide). In marked contrast, parthenolide does not affect growth of LCC1 cells at either of these concentrations [75]. We next asked if parthenolide can re-sensitize LCC9 cells to FAS-mediated apoptosis. FAS and parthenolide synergize to induce LCC9 cell death [75]. Since FAS alone is inactive [28], this synergism reflects at least a partial reversal of the FAS resistance component of the LCC9 cell phenotype and implicates NFκB as a key determinant [75]. Thus, AE crossresistant cells exhibit a greater reliance upon NFκB signaling for proliferation, and inhibition

of NFκB restores their sensitivity to apoptosis induced by FAS [95].

4.4. Expression of ER, PGR, XBP1, NFκB and IRF1 in breast tumors

Using gene expression microarrays, we previously compared the global structures of the transcriptomes of three ER+ human breast cancer cell lines (MCF-7, T47D, ZR75-1) and 13 human breast tumors (11 ER+; 2 ER-) and showed these to be notably similar to ER+ breast tumors from patients [150]. The striking similarities between cell lines and tumors are supported by a report that the estrogen-regulated genes in these cell lines are similarly regulated in breast tumors [151]. These data show that ER+ breast cancer cell lines and ER+ breast tumors in women share global similarities in the structures of their respective transcriptomes [150], and that these cell lines are appropriate models in which to identify clinically relevant endocrine-regulated molecular events [150,151]. Nonetheless, it is necessary to show that the seed genes we have selected are likely to be relevant to the biology of ER+ breast tumors.

To begin to explore the possible clinical relevance of these functional studies, we first asked if we could detect XBP1, NFκB, and IRF1 in breast tumors. We then asked whether any of these proteins were coexpressed in patterns consistent with the experimental data from cell lines. Using a series of breast cancer tissue arrays comprising 480 cores from 54 breast carcinomas (mostly ER+ tumors), we applied immunohistochemistry to explore the expression of the seed genes [152]. Pairwise correlation analyses cannot account for the possibility that unknown associations among proteins may confound each other, so we applied a novel use of partial correlation coefficient analysis. Partial correlation analysis allows an estimate of the correlation between two variables while controlling for a third, fourth and/or fifth and is particularly useful in the analysis of small signaling networks of 3–5 variables [153].

We confirmed the well established coexpression of ERα and PgR, implying that the samples are representative of most ER+ breast cancers. XBP1, NFκB, and IRF1 are each found in a high proportion of breast tumors [152]. Total XBP1 was measured, as XBP1(S) antibodies were not then available. XBP1 staining is variable but detectable in 79% of breast tumors. A very recent study has reported a significant association between XBP1(S) mRNA and poor response to endocrine therapy [154]—entirely consistent with our studies in breast cancer cell lines [76]. 57% of the tumors express detectable RELA in their neoplastic cells, similar to a prior study of $n = 17$ breast tumors [146].

Expression of several of the proteins is correlated in breast tumors. IRF1 correlates with ER and PGR, and also with RELA and XBP1. While, these correlations depend on the subcellular localization of IRF1 and some are direct and others inverse correlations, they are fully consistent with the interpretation that these expression patterns reflect functionally relevant signaling links. For example, we might predict that IRF1 sequestered in the cytosol, unlike that in the nucleus, cannot act as a proapoptotic TF (the full coexpression patterns are described detail in the report by Zhu et al. [152]). We also find coexpression of XBP1 and RELA, consistent with the observation that XBP1 may be downstream of NFκB [109]. When each of the significant correlations is examined in the partial correlation coefficient models, the IRF1, NFκB, and XBP correlations remain [152]. These data are consistent with these three reflecting some component of a larger signaling network active in some ER+ breast cancers and further support their selection as seed genes from which to grow this network and understand its topology and function. Moreover, the functional data from our experimental models implies that this network links signaling and function through two key subcellular components—mitochondria and the endoplasmic reticulum.

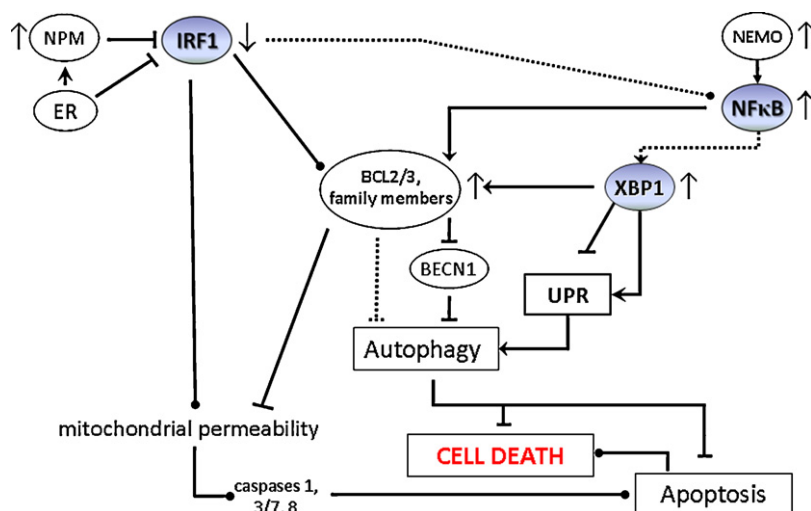


Fig. 5. Endocrine resistance seed-gene network. Simple representation of a seed-gene network of XBP1, NFκB and IRF1 based on functional data obtained from an appropriate cellular context (resistant MCF7/LCC9 cells).

4.5. Simple representation of a seed-gene network of XBP1, NFκB and IRF1 based on functional data obtained from an appropriate cellular context

The experimental data supporting the wiring-diagram representation of the network model shown in Fig. 5 are discussed in the preceding sections. Here we discuss how the signals may flow through this network. The three primary seed genes of IRF1, XBP1, and NFκB are evident as previously proposed [95]. IRF1 expression is repressed in resistant cells [95] but induced by antiestrogens in sensitive cells [65]. A dominant negative IRF1 confers an antiestrogen resistant phenotype, implying that IRF1-driven prodeath signaling is key to the regulation of cell fate [65].

In addition to changes in the expression of IRF1, the upregulation of NPM expression [95,155] could also affect IRF1 action. Both NPM and IRF1 are estrogen-regulated genes in MCF-7 cells, IRF1 expression being suppressed, whereas NPM is induced [129,155]. Since NPM inhibits the transcriptional regulatory activities of IRF1 [156], the increase in NPM expression could bind remaining IRF1 and inhibit its ability to initiate an apoptotic caspase cascade. We also cannot exclude the possibility that NPM has activities independent of blocking IRF1, since NPM overexpression is sufficient to transform NIH 3T3 cells in a standard oncogenesis assay [156]. Increased levels of serum autoantibodies to NPM predict recurrence on TAM 6-months prior to clinical detection [157].

IRF1 and NFκB are known to form heterodimers and to regulate directly gene expression [158,159] including that of the inducible nitric oxide synthase promoter [158]. Since we do not know if it is primarily the gene regulatory effects of these heterodimers, or if their subcellular location is key (they act by preferentially sequestering one or the other so that transcriptional regulation does not occur), this is shown as a dotted line. We would predict, based on the inverse expression between NFκB and IRF1 in LCC9 cells [95] and in some breast cancers [152], that either the prodeath effects of any remaining IRF1 are being sequestered by NFκB in resistant cells and/or that the overexpression and activation of NFκB leads to a dominance of its prosurvival activities. The increased sensitivity of resistant cells to parthenolide is consistent with the functional relevance of at least the latter signaling outcome [75].

We have previously shown that the upregulation of NFκB in antiestrogen resistant cells [95] is likely driven in part by increased NEMO/IKKγ activity [75]. The prosurvival activities of NFκB are well documented [160]. Precisely how NFκB regulates cell survival remains to be fully established but activation of prosurvival

members of the BCL2 gene family are involved in both acquired estrogen-independence [147] and antiestrogen resistance [75,76]. While NFκB is predicted to induce transcription of XBP1 [109], we have yet to report this direct regulation in breast cancer cells (studies are in progress). Whether or not this occurs, XBP1 is clearly upregulated in resistant cells [95] and this activity is sufficient to confer both estrogen-independence and antiestrogen resistance [76]. More recently, increased XBP1 mRNA expression has been shown to predict for a poor response to TAM in breast cancer patients [154].

The central role of XBP1 within the UPR clearly implicates UPR activation in responsiveness to both estrogen-withdrawal and antiestrogen treatment [76]. UPR also is known to induce autophagy [102], although whether this is a prosurvival or prodeath autophagy remains unclear in the context of determining endocrine responsiveness. Autophagy is regulated, at least in part, by the action of BECN1. BECN1 activity is regulated by BCL2, which binds BECN1 and can block BECN1-mediated autophagy [36].

The regulation of BCL2 family members (BCL2, BCL3, and probably others) whether by IRF1, NFκB, and/or XBP1, can affect both autophagy and the intrinsic apoptosis pathway. The intersection of their signaling at BCL2 family members, as shown in Fig. 5, is one location within the broader network where the balance between prodeath and prosurvival signaling, and whether prodeath is autophagic or apoptotic, is determined. This intersection also links signaling through the UPR and endoplasmic reticulum to the mitochondria with the cell fate decision mechanisms—at least in the context of determining cell fate in the context of endocrine responsiveness in breast cancer. The signaling depicted in Fig. 5 represents only a small component of this broader network. Nevertheless, this initial wiring-diagram is consistent with a body of functional data in experimental models and it provides sufficient seed genes, their edges, and the directionality of these edges, to begin a more detailed exploration of this central network. Understanding this network's topology and function will lead to better candidates for drug discovery and to better algorithms to predict how individual tumors will respond to specific endocrine therapies.

References

- [1] A. Jemal, R. Siegel, E. Ward, T. Murray, J. Xu, C. Smigal, M.J. Thun, Cancer statistics, 2006, CA Cancer J. Clin. 56 (2006) 106–130.
- [2] W.D. Foulkes, K. Metcalfe, P. Sun, W.M. Hanna, H.T. Lynch, P. Ghadirian, N. Tung, O.I. Olopade, B.L. Weber, J. McLennan, I.A. Olivetto, L.R. Begin, S.A. Narod, Estrogen receptor status in BRCA1- and BRCA2-related breast cancer: the influ-

- ence of age, grade, and histological type, Clin. Cancer Res. 10 (2004) 2029–2034.
- [3] S.M. Thorpe, Estrogen and progesterone receptor determinations in breast cancer. Technology, biology and clinical significance, Acta Oncol. 27 (1988) 1–19.
- [4] W.D. Foulkes, Re: Estrogen receptor status of primary breast cancer is predictive of estrogen receptor status of contralateral breast cancer, J. Natl. Cancer Inst. 96 (2004) 1040–1041.
- [5] Early Breast Cancer Trialists' Collaborative Group, Polychemotherapy for early breast cancer: an overview of randomised trials, Lancet 352 (1998) 930–942.
- [6] B. Fisher, J. Dignam, E.P. Mamounas, J.P. Costantino, D.L. Wickerham, C. Redmond, N. Wolmark, N.V. Dimitrov, D.M. Bowman, A.G. Glass, J.L. Atkins, N. Abramson, C.M. Sutherland, B.S. Aron, R.G. Margolese, Sequential methotrexate and fluorouracil for the treatment of node-negative breast cancer patients with estrogen-receptor-negative tumors: eight year results from National Surgical Adjuvant Breast and Bowel Project (NSABP) B-13 and first report of findings from NSABP B-19 comparing methotrexate and fluorouracil with conventional cyclophosphamide, methotrexate, and fluorouracil, J. Clin. Oncol. 14 (1996) 1982–1992.
- [7] E.G. Mansour, R. Gray, A.H. Shatila, D.C. Tormey, M.R. Cooper, C.K. Osborne, G. Falkson, Survival advantage of adjuvant chemotherapy in high-risk node-negative breast cancer: ten-year analysis—an intergroup study, J. Clin. Oncol. 16 (1998) 3486–3492.
- [8] Early Breast Cancer Trialists' Collaborative Group, Tamoxifen for early breast cancer: an overview of the randomized trials, Lancet 351 (1998) 1451–1467.
- [9] Early Breast Cancer Trialists Collaborative Group, Systemic treatment of early breast cancer by hormonal, cytotoxic, or immune therapy, Lancet 399 (1992) 1–15.
- [10] R. Clarke, F. Leonessa, J.N. Welch, T.C. Skaar, Cellular and molecular pharmacology of antiestrogen action and resistance, Pharmacol. Rev. 53 (2001) 25–71.
- [11] M.P. Cole, C.T.A. Jones, I.D.H. Todd, A new antioestrogenic agent in late breast cancer. An early clinical appraisal of ICI 46474, Br. J. Cancer 25 (1971) 270–275.
- [12] S.R. Cummings, S. Eckert, K.A. Krueger, D. Grady, T.J. Powles, J.A. Cauley, L. Norton, T. Nickelsen, N.H. Bjarnson, M. Morrow, M.E. Lippman, D. Black, J.E. Glusman, A. Costa, V.C. Jordan, The effect of raloxifene on risk of breast cancer in postmenopausal women; results from the MORE randomized trial. Multiple Outcomes of Raloxifene Evaluation, J. Am. Med. Assoc. 281 (1999) 2189–2197.
- [13] A. Howell, D. DeFriend, J.F.R. Robertson, R.W. Blamey, P. Walton, Response to a specific antioestrogen (ICI 182,780) in tamoxifen-resistant breast cancer, Lancet 345 (1995) 29–30.
- [14] A. Howell, J.F. Robertson, A.J. Quaresma, A. Aschermannova, L. Mauriac, U.R. Kleeberg, I. Vergote, B. Erikstein, A. Webster, C. Morris, Fulvestrant, formerly ICI 182, 780, is as effective as anastrozole in postmenopausal women with advanced breast cancer progressing after prior endocrine treatment, J. Clin. Oncol. 20 (2002) 3396–3403.
- [15] G. Ferretti, E. Bria, D. Giannarelli, A. Felici, P. Papaldo, A. Fabi, C.S. Di, E.M. Ruggeri, M. Milella, M. Ciccarese, F.L. Cecere, A. Gelibter, C. Nuzzo, F. Cognetti, E. Terzoli, P. Carlini, Second- and third-generation aromatase inhibitors as first-line endocrine therapy in postmenopausal metastatic breast cancer patients: a pooled analysis of the randomised trials, Br. J. Cancer 94 (2006) 1789–1796.
- [16] B. Thurlimann, A. Keshaviah, A.S. Coates, H. Mouridsen, L. Mauriac, J.F. Forbes, R. Paridaens, M. Castiglione-Gertsch, R.D. Gelber, M. Rabaglio, I. Smith, A. Wardley, K.N. Price, A. Goldhirsch, A comparison of letrozole and tamoxifen in postmenopausal women with early breast cancer, N. Engl. J. Med. 353 (2005) 2747–2757.
- [17] R.C. Coombes, E. Hall, L.J. Gibson, R. Paridaens, J. Jassem, T. Delozier, S.E. Jones, I. Alvarez, G. Bertelli, O. Ortmann, A.S. Coates, E. Bajetta, D. Dodwell, R.E. Coleman, L.J. Fallowfield, E. Mickiewicz, J. Andersen, P.E. Lonning, G. Cocconi, A. Stewart, N. Stuart, C.F. Snowden, M. Carpentieri, G. Massimini, J.M. Bliss, A randomized trial of exemestane after two to three years of tamoxifen therapy in postmenopausal women with primary breast cancer, N. Engl. J. Med. 350 (2004) 1081–1092.
- [18] F. Boccardo, A. Rubagotti, D. Amoroso, M. Mesiti, D. Romeo, C. Caroti, A. Faris, G. Cruciani, E. Villa, G. Schieppati, G. Mustacchi, Sequential tamoxifen and aminoglutethimide versus tamoxifen alone in the adjuvant treatment of postmenopausal breast cancer patients: results of an Italian cooperative study, J. Clin. Oncol. 19 (2001) 4209–4215.
- [19] R. Jakesz, W. Jonat, M. Gnant, M. Mittlboeck, R. Greil, C. Tausch, J. Hilfrich, W. Kwasny, C. Menzel, H. Samonigg, M. Seifert, G. Gademann, M. Kaufmann, J. Wolfgang, Switching of postmenopausal women with endocrine-responsive early breast cancer to anastrozole after 2 years' adjuvant tamoxifen: combined results of ABCSG trial 8 and ARNO 95 trial, Lancet 366 (2005) 455–462.
- [20] M. Baum, A. Buzdar, J. Cuzick, J. Forbes, J. Houghton, A. Howell, T. Sahmoud, Anastrozole alone or in combination with tamoxifen versus tamoxifen alone for adjuvant treatment of postmenopausal women with early-stage breast cancer: results of the ATAC (Arimidex, Tamoxifen Alone or in Combination) trial efficacy and safety update analyses, Cancer 98 (2003) 1802–1810.
- [21] J. Bonnetterre, A. Buzdar, J.M. Nabholz, J.F. Robertson, B. Thurlimann, M. von Euler, T. Sahmoud, A. Webster, M. Steinberg, Anastrozole is superior to tamoxifen as first-line therapy in hormone receptor positive advanced breast carcinoma, Cancer 92 (2001) 2247–2258.
- [22] H. Mouridsen, M. Gershanovich, Y. Sun, R. Perez-Carrion, C. Boni, A. Monnier, J. Appfelstaedt, R. Smith, H.P. Sleetboom, F. Janicke, A. Pluzanska, M. Dank, D. Becquart, P.P. Bapsy, E. Salminen, R. Snyder, M. Lassus, J.A. Verbeek, B. Staffler, H.A. Chaudri-Ross, M. Dugan, Superior efficacy of letrozole versus tamoxifen as first-line therapy for postmenopausal women with advanced breast cancer: results of a phase iii study of the international letrozole breast cancer group, J. Clin. Oncol. 19 (2001) 2596–2606.
- [23] R. Clarke, N. Brünner, Cross resistance and molecular mechanisms in antiestrogen resistance, Endocr. Relat. Cancer 2 (1995) 59–72.
- [24] C. Osipo, C. Gajdos, H. Liu, B. Chen, V.C. Jordan, Paradoxical action of fulvestrant in estradiol-induced regression of tamoxifen-stimulated breast cancer, J. Natl. Cancer Inst. 95 (2003) 1597–1608.
- [25] M.M. Gottardis, V.C. Jordan, Development of tamoxifen-stimulated growth of MCF-7 tumors in athymic mice after long-term antiestrogen administration, Cancer Res. 48 (1988) 5183–5187.
- [26] C.K. Osborne, E.B. Coronado, J.P. Robinson, Human breast cancer in athymic nude mice: cytostatic effects of long-term antiestrogen therapy, Eur. J. Cancer Clin. Oncol. 23 (1987) 1189–1196.
- [27] N. Brünner, T.L. Frandsen, C. Holst-Hansen, M. Bei, E.W. Thompson, A.E. Wakefield, M.E. Lippman, R. Clarke, MCF7/LCC2: A 4-hydroxytamoxifen resistant human breast cancer variant which retains sensitivity to the steroidal antiestrogen ICI 182, 780, Cancer Res. 53 (1993) 3229–3232.
- [28] N. Brünner, B. Boysen, S. Jirus, T.C. Skaar, C. Holst-Hansen, J. Lippman, T. Frandsen, M. Spang-Thomsen, S.A.W. Fuqua, R. Clarke, MCF7/LCC9: an antiestrogen resistant MCF-7 variant in which acquired resistance to the steroidal antiestrogen ICI 182, 780 confers an early crossresistance to the non-steroidal antiestrogen tamoxifen, Cancer Res. 57 (1997) 3486–3493.
- [29] R. Clarke, M.C. Liu, K.B. Bouker, Z. Gu, R.Y. Lee, Y. Zhu, T.C. Skaar, B. Gomez, K. O'Brien, Y. Wang, L.A. Hilakivi-Clarke, Antiestrogen resistance in breast cancer and the role of estrogen receptor signaling, Oncogene 22 (2003) 7316–7339.
- [30] Y. Nomura, H. Tashiro, K. Hisamatsu, Differential effects of estrogen and antiestrogen on in vitro clonogenic growth of human breast cancers in soft agar, J. Natl. Cancer Inst. 82 (1990) 1146–1149.
- [31] A. Haddow, J.M. Watkins, E. Paterson, Influence of synthetic oestrogens upon advanced malignant disease, Br. Med. J. 2 (1944) 393–398.
- [32] A.L. Walpole, E. Paterson, Synthetic oestrogens in mammary cancer, Lancet 2 (1949) 783–789.
- [33] R. Clarke, H.W. van den Berg, R.F. Murphy, Tamoxifen and 17 β -estradiol reduce the membrane fluidity of human breast cancer cells, J. Natl. Cancer Inst. 82 (1990) 1702–1705.
- [34] S. Patingre, B. Levine, Bcl-2 inhibition of autophagy: a new route to cancer? Cancer Res. 66 (2006) 2885–2888.
- [35] R. Riggins, A.H. Bouton, M.C. Liu, R. Clarke, Antiestrogens, aromatase inhibitors, and apoptosis in breast cancer, Vitam. Horm. 71 (2005) 201–237.
- [36] S. Patingre, A. Tassa, X. Qu, R. Garuti, X.H. Liang, N. Mizushima, M. Packer, M.D. Schneider, B. Levine, Bcl-2 antiapoptotic proteins inhibit Beclin 1-dependent autophagy, Cell 122 (2005) 927–939.
- [37] B. Zhivotovsky, G. Kroemer, Apoptosis and genomic instability, Nat. Rev. Mol. Cell Biol. 5 (2004) 752–762.
- [38] J.M. Brown, L.D. Attardi, The role of apoptosis in cancer development and treatment response, Nat. Rev. Cancer 5 (2005) 231–237.
- [39] J.C. Goldstein, N.J. Waterhouse, P. Juin, G.I. Evan, D.R. Green, The coordinate release of cytochrome c during apoptosis is rapid, complete and kinetically invariant, Nat. Cell Biol. 2 (2000) 156–162.
- [40] S. Shimizu, T. Kanaseki, N. Mizushima, T. Mizuta, S. Rakawa-Kobayashi, C.B. Thompson, Y. Tsujimoto, Role of Bcl-2 family proteins in a non-apoptotic programmed cell death dependent on autophagy genes, Nat. Cell Biol. 6 (2004) 1221–1228.
- [41] M. Lamparska-Przybylska, B. Gajkowska, T. Motyl, BID-deficient breast cancer MCF-7 cells as a model for the study of autophagy in cancer therapy, Autophagy 2 (2006) 47–48.
- [42] N. Furuya, J. Yu, M. Byfield, S. Patingre, B. Levine, The evolutionarily conserved domain of Beclin 1 is required for Vps34 binding, autophagy and tumor suppressor function, Autophagy 1 (2005) 46–52.
- [43] X.H. Liang, S. Jackson, M. Seaman, K. Brown, B. Kempkes, H. Hibshoosh, B. Levine, Induction of autophagy and inhibition of tumorigenesis by beclin 1, Nature 402 (1999) 672–676.
- [44] A.L. Edinger, C.B. Thompson, Death by design: apoptosis, necrosis and autophagy, Curr. Opin. Cell Biol. 16 (2004) 663–669.
- [45] L.E. Broker, F.A. Krut, G. Giaccone, Cell death independent of caspases: a review, Clin. Cancer Res. 11 (2005) 3155–3162.
- [46] N. Mizushima, T. Yoshimori, How to interpret LC3 immunoblotting, Autophagy 3 (2007) 542–545.
- [47] S. Kimura, T. Noda, T. Yoshimori, Dissection of the autophagosome maturation process by a novel reporter protein, tandem fluorescent-tagged LC3, Autophagy 3 (2007) 452–460.
- [48] D.J. Klionsky, H. Abeliovich, P. Agostinis, D.K. Agrawal, G. Aliev, D.S. Askew, M. Baba, E.H. Baehrecke, B.A. Bahr, A. Ballabio, B.A. Bamber, D.C. Bassham, E. Bergamini, X. Bi, M. Biard-Piechaczyk, J.S. Blum, D.E. Bredesen, J.L. Brodsky, J.H. Brummell, U.T. Brunk, W. Bursch, N. Camougrand, E. Cebollero, F. Cecconi, Y. Chen, L.S. Chin, A. Choi, C.T. Chu, J. Chung, P.G. Clarke, R.S. Clark, S.G. Clarke, C. Clave, J.L. Cleveland, P. Codogno, M.I. Colombo, A. Coto-Montes, J.M. Cregg, A.M. Cuervo, J. Debnath, F. Demarchi, P.B. Dennis, P.A. Dennis, V. Deretic, R.J. Devenish, S.F. Di, J.F. Dice, M. Difiglia, S. Nesh-Kumar, C.W. Distelhorst, M. Djavaheri-Mergny, F.C. Dorsey, W. Droge, M. Dron, W.A. Dunn Jr., M. Duszenko, N.T. Eissa, Z. Elazar, A. Escalante, E.L. Eskelinen, L. Fesus, K.D. Finley, J.M. Fuentes, J. Fueyo, K. Fujisaki, B. Galliot, F.B. Gao, D.A. Gewirtz, S.B. Gibson, A. Gohla, A.L. Goldberg, R. Gonzalez, C. Gonzalez-Estevez, S. Gorski, R.A. Gottlieb, D. Haussinger, Y.W. He, K. Heidenreich, J.A. Hill, M. Hoyer-Hansen, X. Hu, W.P. Huang, A. Iwasaki, M. Jaattala, W.T. Jackson, X. Jiang, S. Jin, T. Johansen, J.U.

- Jung, M. Kadowaki, C. Kang, A. Kelekar, D.H. Kessel, J.A. Kiel, H.P. Kim, A. Kimchi, T.J. Kinsella, K. Kiselyov, K. Kitamoto, E. Knecht, M. Komatsu, E. Kominami, S. Kondo, A.L. Kovacs, G. Kroemer, C.Y. Kuan, R. Kumar, M. Kundu, J. Landry, M. Laporte, W. Le, H.Y. Lei, M.J. Lenardo, B. Levine, A. Lieberman, K.L. Lim, F.C. Lin, W. Liou, L.F. Liu, G. Lopez-Berestein, C. Lopez-Otin, B. Lu, K.F. Macleod, W. Malorni, W. Martinet, K. Matsuoka, J. Mautner, A.J. Meijer, A. Melendez, P. Michels, G. Miotto, W.P. Mistiaen, N. Mizushima, B. Mograbi, I. Monastyrsky, M.N. Moore, P.I. Moreira, Y. Moriyasu, T. Motyl, C. Munz, L.O. Murphy, N.I. Naqvi, T.P. Neufeld, I. Nishino, R.A. Nixon, T. Noda, B. Nurnberg, M. Ogawa, N.L. Oleinick, L.J. Olsen, B. Ozpolat, S. Paglin, G.E. Palmer, I. Papassideri, M. Parkes, D.H. Perlmutter, G. Perry, M. Piacentini, R. Pinkas-Kramarski, M. Prescott, T. Proikas-Czanane, N. Raben, A. Rami, F. Reggiori, B. Rohrer, D.C. Rubinsztein, K.M. Ryan, J. Sadoshima, H. Sakagami, Y. Sakai, M. Sandri, C. Sasakawa, M. Sass, C. Schneider, P.O. Seglen, O. Seleverstov, J. Settleman, J.J. Shacka, I.M. Shapiro, A. Sibirny, E.C. Silva-Zacarin, H.U. Simon, C. Simone, A. Simonsen, M.A. Smith, K. Spänel-Borowski, V. Srinivas, M. Steeves, H. Stenmark, P.E. Stromhaug, C.S. Subauste, S. Sugimoto, D. Sulzer, T. Suzuki, M.S. Swanson, I. Tabas, F. Takeshita, N.J. Talbot, Z. Talloczy, K. Tanaka, K. Tanaka, I. Tanida, G.S. Taylor, J.P. Taylor, A. Terman, G. Tettamanti, C.B. Thompson, M. Thumm, A.M. Tolkovsky, S.A. Tooze, R. Truant, L.V. Tumanovska, Y. Uchiyama, T. Ueno, N.L. Uzcategui, d.K. van I, E.C. Vaquero, T. Vellai, M.W. Vogel, H.G. Wang, P. Webster, J.W. Wiley, Z. Xi, G. Xiao, J. Yahalom, J.M. Yang, G. Yap, X.M. Yin, T. Yoshimori, L. Yu, Z. Yue, M. Yuzaki, O. Zabirnyk, X. Zheng, X. Zhu, R.L. Deter, Guidelines for the use and interpretation of assays for monitoring autophagy in higher eukaryotes, *Autophagy* 4 (2008) 151–175.
- [49] S. Yousefi, R. Perozzo, I. Schmid, A. Ziemiecki, T. Schaffner, L. Scapozza, T. Brunner, H.U. Simon, Calpain-mediated cleavage of Atg5 switches autophagy to apoptosis, *Nat. Cell Biol.* 8 (2006) 1124–1132.
- [50] S. Jin, Autophagy, mitochondrial quality control, and oncogenesis, *Autophagy* 2 (2006) 80–84.
- [51] M.A. Park, A. Yacoub, D. Sarkar, L. Emdad, M. Rahmani, S. Spiegel, C. Koumenis, M. Graf, D.T. Curiel, S. Grant, P.B. Fisher, P. Dent, PERK-dependent regulation of MDA-7/IL-24-induced autophagy in primary human glioma cells, *Autophagy* 4 (2008).
- [52] A. Yacoub, M.A. Park, P. Gupta, M. Rahmani, G. Zhang, H. Hamed, D. Hanna, D. Sarkar, I.V. Lebedeva, L. Emdad, M. Sauane, N. Vozhilla, S. Spiegel, C. Koumenis, M. Graf, D.T. Curiel, S. Grant, P.B. Fisher, P. Dent, Caspase-, cathepsin-, and PERK-dependent regulation of MDA-7/IL-24-induced cell killing in primary human glioma cells, *Mol. Cancer Ther.* 7 (2008) 297–313.
- [53] Y. Chen, E. Millan-Ward, J. Kong, S.J. Israels, S.B. Gibson, Oxidative stress induces autophagic cell death independent of apoptosis in transformed and cancer cells, *Cell Death Differ.* 15 (2008) 171–182.
- [54] C.H. Yan, Y.P. Yang, Z.H. Qin, Z.L. Gu, P. Reid, Z.Q. Liang, Autophagy is involved in cytotoxic effects of crotoxin in human breast cancer cell line MCF-7 cells, *Acta Pharmacol. Sin.* 28 (2007) 540–548.
- [55] A. Guillon-Munos, M.X. van Bemmelen, P.G. Clarke, Autophagy can be a killer even in apoptosis-competent cells, *Autophagy* 2 (2006) 140–142.
- [56] A. Apel, I. Herr, H. Schwarz, H.P. Rodemann, A. Mayer, Blocked autophagy sensitizes resistant carcinoma cells to radiation therapy, *Cancer Res.* 68 (2008) 1485–1494.
- [57] M. Li, X. Jiang, D. Liu, Y. Na, G.F. Gao, Z. Xi, Autophagy protects LNCaP cells under androgen deprivation conditions, *Autophagy* 4 (2008) 54–60.
- [58] P. Boya, R.A. Gonzalez-Polo, N. Casares, J.L. Perfettini, P. Dessen, N. Larochette, D. Metivier, D. Meley, S. Souquere, T. Yoshimori, G. Pierron, P. Codogno, G. Kroemer, Inhibition of macroautophagy triggers apoptosis, *Mol. Cell Biol.* 25 (2005) 1025–1040.
- [59] M. Castedo, J.L. Perfettini, T. Roumier, A. Valent, H. Raslova, K. Yakushijin, D. Horne, J. Feunteun, G. Lenoir, R. Medema, W. Vainchenker, G. Kroemer, Mitotic catastrophe constitutes a special case of apoptosis whose suppression entails aneuploidy, *Oncogene* 23 (2004) 4362–4370.
- [60] I.B. Roninson, E.V. Broude, B.D. Chang, If not apoptosis, then what? Treatment-induced senescence and mitotic catastrophe in tumor cells, *Drug Resist. Updat.* 4 (2001) 303–313.
- [61] G.J. Kops, B.A. Weaver, D.W. Cleveland, On the road to cancer: aneuploidy and the mitotic checkpoint, *Nat. Rev. Cancer* 5 (2005) 773–785.
- [62] D. Kanduc, A. Mittelman, R. Serpico, E. Sinigaglia, A.A. Sinha, C. Natale, R. Santacroce, M.G. Di Corcia, A. Lucchese, L. Dini, P. Pani, S. Santacroce, S. Simone, R. Bucci, E. Farber, Cell death: apoptosis versus necrosis, *Int. J. Oncol.* 21 (2002) 165–170.
- [63] G.P. Dimri, X. Lee, G. Basile, M. Acosta, G. Scott, C. Roskelley, E.E. Medrano, M. Linskens, I. Rubelj, O. Pereira-Smith, A biomarker that identifies senescent human cells in culture and in aging skin in vivo, *Proc. Natl. Acad. Sci. U.S.A.* 92 (1995) 9363–9367.
- [64] W.E. Wright, O.M. Pereira-Smith, J.W. Shay, Reversible cellular senescence: implications for immortalization of normal human diploid fibroblasts, *Mol. Cell Biol.* 9 (1989) 3088–3092.
- [65] K.B. Bouker, T.C. Skaar, D.R. Fernandez, K.A. O'Brien, R. Clarke, Interferon regulatory factor-1 mediates the proapoptotic but not cell cycle arrest effects of the steroidal antiestrogen ICI 182,780 (Faslodex, Fulvestrant), *Cancer Res.* 64 (2004) 4030–4039.
- [66] N. Kyprianou, H.F. English, N.E. Davidson, J.T. Isaacs, Programmed cell death during regression of the MCF-7 human breast cancer following estrogen ablation, *Cancer Res.* 51 (1991) 162–166.
- [67] M.F. El Etreby, Y. Liang, R.W. Wrenn, P.V. Schoenlein, Additive effect of mifepristone and tamoxifen on apoptotic pathways in MCF-7 human breast cancer cells, *Breast Cancer Res. Treat.* 51 (1998) 149–168.
- [68] V.T. Gaddy, J.T. Barrett, J.N. Delk, A.M. Kallab, A.G. Porter, P.V. Schoenlein, Mifepristone induces growth arrest, caspase activation, and apoptosis of estrogen receptor-expressing, antiestrogen-resistant breast cancer cells, *Clin. Cancer Res.* 10 (2004) 5215–5225.
- [69] W. Bursch, A. Ellinger, H. Kienzl, L. Torok, S. Pandey, M. Sikorska, R. Walker, R.S. Hermann, Active cell death induced by the anti-estrogens tamoxifen and ICI 164 384 in human mammary carcinoma cells (MCF-7) in culture: the role of autophagy, *Carcinogenesis* 17 (1996) 1595–1607.
- [70] B. Inbal, S. Bialik, I. Sabanay, G. Shani, A. Kimchi, DAP kinase and DRP-1 mediate membrane blebbing and the formation of autophagic vesicles during programmed cell death, *J. Cell Biol.* 157 (2002) 455–468.
- [71] M.A. Qadir, B. Kwok, W.H. Dragowska, K.H. To, D. Le, M.B. Bally, S.M. Gorski, Macroautophagy inhibition sensitizes tamoxifen-resistant breast cancer cells and enhances mitochondrial depolarization, *Breast Cancer Res. Treat.* 3 (2008) 389–403.
- [72] G. Bjorkoy, T. Lamark, A. Brech, H. Outzen, M. Perander, A. Overvatn, H. Stenmark, T. Johansen, p62/SQSTM1 forms protein aggregates degraded by autophagy and has a protective effect on huntingtin-induced cell death, *J. Cell Biol.* 171 (2005) 603–614.
- [73] Y. Ichimura, T. Kumanomidou, Y.S. Sou, T. Mizushima, J. Ezaki, T. Ueno, E. Kominami, T. Yamane, K. Tanaka, M. Komatsu, Structural basis for sorting mechanism of p62 in selective autophagy, *J. Biol. Chem.* 283 (2008) 22847–22857.
- [74] Y. Ichimura, E. Kominami, K. Tanaka, M. Komatsu, Selective turnover of p62/A170/SQSTM1 by autophagy, *Autophagy* 4 (2008).
- [75] R. Riggins, A. Zwart, N. Nehra, P. Agarwal, R. Clarke, The NFκB inhibitor parthenolide restores ICI 182,780 (Faslodex; Fulvestrant)-induced apoptosis in antiestrogen resistant breast cancer cells, *Mol. Cancer Ther.* 4 (2005) 33–41.
- [76] B.P. Gomez, R. Riggins, A.N. Shajahan, U. Klimach, A. Wang, A.C. Crawford, Y. Zhu, A. Zwart, M. Wang, R. Clarke, Human X-Box binding protein-1 confers both estrogen independence and antiestrogen resistance in breast cancer cell lines, *FASEB J.* 21 (2007) 4013–4027.
- [77] R. Clarke, N. Brünner, B.S. Katzenellenbogen, E.W. Thompson, M.J. Norman, C. Koppi, S. Paik, M.E. Lippman, R.B. Dickson, Progression from hormone dependent to hormone independent growth in MCF-7 human breast cancer cells, *Proc. Natl. Acad. Sci. U.S.A.* 86 (1989) 3649–3653.
- [78] R. Clarke, N. Brünner, E.W. Thompson, P. Glanz, D. Katz, R.B. Dickson, M.E. Lippman, The inter-relationships between ovarian-independent growth, antiestrogen resistance and invasiveness in the malignant progression of human breast cancer, *J. Endocrinol.* 122 (1989) 331–340.
- [79] D.A. Cameron, J.C. Keen, J.M. Dixon, C. Bellamy, A. Hanby, T.J. Anderson, W.R. Miller, Effective tamoxifen therapy of breast cancer involves both antiproliferative and pro-apoptotic changes, *Eur. J. Cancer* 36 (2000) 845–851.
- [80] T. Reimer, D. Koczan, H. Muller, K. Friese, H.J. Thiesen, B. Gerber, Tumour Fas ligand: Fas ratio greater than 1 is an independent marker of relative resistance to tamoxifen therapy in hormone receptor positive breast cancer, *Breast Cancer Res.* 4 (2002) R9.
- [81] P.A. Ellis, I.E. Smith, S. Detre, S.A. Burton, J. Salter, R. A'Hern, G. Walsh, S.R. Johnston, M. Dowsett, Reduced apoptosis and proliferation and increased Bcl-2 in residual breast cancer following preoperative chemotherapy, *Breast Cancer Res. Treat.* 48 (1998) 107–116.
- [82] N. Brunner, V. Boulay, A. Fojo, C.E. Freter, M.E. Lippman, R. Clarke, Acquisition of hormone-independent growth in MCF-7 cells is accompanied by increased expression of estrogen-regulated genes but without detectable DNA amplifications, *Cancer Res.* 53 (1993) 283–290.
- [83] R. Clarke, H.W. Ransom, A. Wang, J. Xuan, M.C. Liu, E.A. Gehan, Y. Wang, The properties of very high dimensional data spaces: implications for exploring gene and protein expression data, *Nat. Rev. Cancer* 8 (2008) 37–49.
- [84] Y. Wang, D.J. Miller, R. Clarke, Approaches to working in high-dimensional data spaces: gene expression microarrays, *Br. J. Cancer* 98 (2008) 1023–1028.
- [85] R. Clarke, T.C. Skaar, K.B. Bouker, N. Davis, Y.R. Lee, J.N. Welch, F. Leonessa, Molecular and pharmacological aspects of antiestrogen resistance, *J. Steroid Biochem. Mol. Biol.* 76 (2001) 71–84.
- [86] R. Clarke, N. Brünner, Acquired estrogen independence and antiestrogen resistance in breast cancer: estrogen receptor-driven phenotypes? *Trends Endocrinol. Metab.* 7 (1996) 25–35.
- [87] S. Huang, Genomics, complexity and drug discovery: insights from Boolean network models of cellular regulation, *Pharmacogenomics* 2 (2001) 203–222.
- [88] P.E. Goss, J.N. Ingle, S. Martino, N.J. Robert, H.B. Muss, M.J. Piccart, M. Castiglione, D. Tu, L.E. Shepherd, K.I. Pritchard, R.B. Livingston, N.E. Davidson, L. Norton, E.A. Perez, J.S. Abrams, D.A. Cameron, M.J. Palmer, J.L. Pater, Randomized trial of letrozole following tamoxifen as extended adjuvant therapy in receptor-positive breast cancer: updated findings from NCIC CTG MA. 17, *J. Natl. Cancer Inst.* 97 (2005) 1262–1271.
- [89] R.F. Hashimoto, S. Kim, I. Shmulevich, W. Zhang, M.L. Bittner, E.R. Dougherty, Growing genetic regulatory networks from seed genes, *Bioinformatics* 20 (2004) 1241–1247.
- [90] C. Wang, J. Xuan, L. Chen, P. Zhao, Y. Wang, R. Clarke, E. Hoffman, Motif-directed component analysis for regulatory network inference, *BMC Bioinform.* 9 (2008), doi:10.1186/1471-2105-9-51-521.
- [91] Y. Zhang, J. Xuan, B.G. de Los Reyes, R. Clarke, H.W. Ransom, Network motif-based identification of transcription factor-target gene relationships by integrating multi-source biological data, *BMC Bioinform.* 9 (2008) 203.

- [92] I.B. Jeffery, S.F. Madden, P.A. McGettigan, G. Perriere, A.C. Culhane, D.G. Higgins, Integrating transcription factor binding site information with gene expression datasets, *Bioinformatics* 23 (2007) 298–305.
- [93] L. Chen, J. Xuan, C. Wang, L.-M. Shih, Y. Wang, Z. Zhang, E.P. Hoffman, R. Clarke, Knowledge guided multi-scale independent component analysis for biomarker identification, *BMC Bioinform.* 9 (2008), doi:10.1186/1471-2105-9-416.
- [94] S. McKenzie, N. Kyprianou, Apoptosis evasion: the role of survival pathways in prostate cancer progression and therapeutic resistance, *J. Cell Biochem.* 97 (2006) 18–32.
- [95] Z. Gu, R.Y. Lee, T.C. Skaar, K.B. Bouker, J.N. Welch, J. Lu, A. Liu, Y. Zhu, N. Davis, F. Leonessa, N. Brunner, Y. Wang, R. Clarke, Association of interferon regulatory factor-1, nucleophosmin, nuclear factor-kappaB, and cyclic AMP response element binding with acquired resistance to faslodex (ICI 182, 780), *Cancer Res.* 62 (2002) 3428–3437.
- [96] K.B. Bouker, T.C. Skaar, R. Riggins, D.S. Harburger, D.R. Fernandez, A. Zwart, A. Wang, R. Clarke, Interferon regulatory factor-1 (IRF-1) exhibits tumor suppressor activities in breast cancer associated with caspase activation and induction of apoptosis, *Carcinogenesis* 26 (2005) 1527–1535.
- [97] K.B. Bouker, T.C. Skaar, D.S. Harburger, R. Riggins, D.R. Fernandez, A. Zwart, R. Clarke, The A4396G polymorphism in interferon regulatory factor-1 is frequently expressed in breast cancer, *Cancer Genet. Cytogenet.* 175 (2007) 61–64.
- [98] D. Ron, Translational control in the endoplasmic reticulum stress response, *J. Clin. Invest.* 110 (2002) 1383–1388.
- [99] K. Zhang, R.J. Kaufman, The unfolded protein response: a stress signaling pathway critical for health and disease, *Neurology* 66 (2006) S102–S109.
- [100] J.B. DuRose, A.B. Tam, M. Niwa, Intrinsic capacities of molecular sensors of the unfolded protein response to sense alternate forms of endoplasmic reticulum stress, *Mol. Biol. Cell* 17 (2006) 3095–3107.
- [101] H. Yoshida, T. Matsui, A. Yamamoto, T. Okada, K. Mori, XBP1 mRNA is induced by ATF6 and spliced by IRE1 in response to ER stress to produce a highly active transcription factor, *Cell* 107 (2001) 881–891.
- [102] M. Ogata, S. Hino, A. Saito, K. Morikawa, S. Kondo, S. Kanemoto, T. Murakami, M. Taniguchi, I. Tanii, K. Yoshinaga, S. Shiosaka, J.A. Hammarback, F. Urano, K. Imaizumi, Autophagy is activated for cell survival after endoplasmic reticulum stress, *Mol. Cell Biol.* 26 (2006) 9220–9231.
- [103] D.E. Feldman, V. Chauhan, A.C. Koong, The unfolded protein response: a novel component of the hypoxic stress response in tumors, *Mol. Cancer Res.* 3 (2005) 597–605.
- [104] I.M. Clauss, M. Chu, J.L. Zhao, L.H. Glimcher, The basic domain/leucine zipper protein hXBP-1 preferentially binds to and transactivates CRE-like sequences containing an ACGT core, *Nucleic Acids Res.* 24 (1996) 1855–1864.
- [105] H.C. Liou, M.R. Boothby, P.W. Finn, R. Davidon, N. Nabavi, L. Zeleznik, J.P. Ting, L.H. Glimcher, A new member of the leucine zipper class of proteins that binds to the HLA DR alpha promoter, *Science* 247 (1990) 1581–1584.
- [106] R. Sriburi, S. Jackowski, K. Mori, J.W. Brewer, XBP1: a link between the unfolded protein response, lipid biosynthesis, and biogenesis of the endoplasmic reticulum, *J. Cell Biol.* 167 (2004) 35–41.
- [107] A.H. Lee, N.N. Iwakoshi, K.C. Anderson, L.H. Glimcher, Proteasome inhibitors disrupt the unfolded protein response in myeloma cells, *Proc. Natl. Acad. Sci. U.S.A.* 100 (2003) 9946–9951.
- [108] L. Ding, J. Yan, J. Zhu, H. Zhong, Q. Lu, Z. Wang, C. Huang, Q. Ye, Ligand-independent activation of estrogen receptor alpha by XBP-1, *Nucleic Acids Res.* 31 (2003) 5266–5274.
- [109] A.M. Reimold, N.N. Iwakoshi, J. Manis, P. Vallabhajosyula, E. Szomolanyi-Tsuda, E.M. Gravalles, D. Friend, M.J. Grusby, F. Alt, L.H. Glimcher, Plasma cell differentiation requires the transcription factor XBP-1, *Nature* 412 (2001) 300–307.
- [110] I.M. Clauss, E.M. Gravalles, J.M. Darling, F. Shapiro, M.J. Glimcher, L.H. Glimcher, In situ hybridization studies suggest a role for the basic region–leucine zipper protein hXBP-1 in exocrine gland and skeletal development during mouse embryogenesis, *Dev. Dyn.* 197 (1993) 146–156.
- [111] A.M. Reimold, A. Etkin, I. Clauss, A. Perkins, D.S. Friend, J. Zhang, H.F. Horton, A. Scott, S.H. Orkin, M.C. Byrne, M.J. Grusby, L.H. Glimcher, An essential role in liver development for transcription factor XBP-1, *Genes Dev.* 14 (2000) 152–157.
- [112] D.Y. Wang, R. Fulthorpe, S.N. Liss, E.A. Edwards, Identification of estrogen-responsive genes by complementary deoxyribonucleic acid microarray and characterization of a novel early estrogen-induced gene: EEIG1, *Mol. Endocrinol.* 18 (2004) 402–411.
- [113] S. Tozlu, I. Girault, S. Vacher, J. Vendrell, C. Andrieu, F. Spyrtas, P. Cohen, R. Lidereau, I. Bieche, Identification of novel genes that co-cluster with estrogen receptor alpha in breast tumor biopsy specimens, using a large-scale real-time reverse transcription-PCR approach, *Endocr. Relat. Cancer* 13 (2006) 1109–1120.
- [114] C.L. Willman, C.E. Sever, M.G. Pallavicini, H. Harada, N. Tanaka, M.L. Slovák, H. Yamamoto, K. Harada, T.C. Meeker, A.F. List, T. Taniguchi, Deletion of IRF-1, mapping to chromosome 5q31.1, in human leukemia and preleukemic myelodysplasia, *Science* 259 (1993) 965–971.
- [115] H.W. van den Berg, W.J. Leahy, M. Lynch, R. Clarke, J. Nelson, Recombinant human interferon alpha increases oestrogen receptor expression in human breast cancer cells (ZR-75-1) and sensitises them to the anti-proliferative effects of tamoxifen, *Br. J. Cancer* 55 (1987) 255–257.
- [116] T. Matsuyama, T. Kimura, M. Kitagawa, K. Pfeffer, T. Kawakami, N. Watanabe, T.M. Kundig, R. Amakawa, K. Kishihara, A. Wakeham, J. Potter, C.L. Furlonger, A. Narendran, H. Suzuki, P.S. Ohashi, C.J. Paige, T. Taniguchi, T.W. Mak, Targeted disruption of IRF-1 or IRF-2 results in abnormal type I IFN gene induction and aberrant lymphocyte development, *Cell* 75 (1993) 83–97.
- [117] S. Namiki, T. Nakamura, S. Oshima, M. Yamazaki, Y. Sekine, K. Tsuchiya, R. Okamoto, T. Kanai, M. Watanabe, IRF-1 mediates upregulation of LMP7 by IFN-gamma and concerted expression of immunosubunits of the proteasome, *FEBS Lett.* 579 (2005) 2781–2787.
- [118] S.H. Lee, J.W. Kim, S.H. Oh, Y.J. Kim, S.B. Rho, K. Park, K.L. Park, J.H. Lee, IFN-gamma/IRF-1-induced p27kip1 down-regulates telomerase activity and human telomerase reverse transcriptase expression in human cervical cancer, *FEBS Lett.* 579 (2005) 1027–1033.
- [119] S.H. Lee, J.W. Kim, H.W. Lee, Y.S. Cho, S.H. Oh, Y.J. Kim, C.H. Jung, W. Zhang, J.H. Lee, Interferon regulatory factor-1 (IRF-1) is a mediator for interferon-gamma induced attenuation of telomerase activity and human telomerase reverse transcriptase (hTERT) expression, *Oncogene* 22 (2003) 381–391.
- [120] T. Tamura, M. Ishihara, M.S. Lamphier, N. Tanaka, I. Oishi, S. Aizawa, T. Matsuyama, T.W. Mak, S. Taki, T. Taniguchi, An IRF-1 dependent pathway of DNA damage-induced apoptosis in mitogen-activated T lymphocytes, *Nature* 376 (1995) 596–599.
- [121] S. Prost, C.O.C. Bellamy, D.S. Cunningham, D.J. Harrison, Altered DNA repair and dysregulation of p53 in IRF-1 null hepatocytes, *FASEB J.* 12 (1998) 181–188.
- [122] H. Nozawa, E. Oda, K. Nakao, M. Ishihara, S. Ueda, T. Yokochi, K. Ogasawara, Y. Nakatsuru, K. Hioki, S. Aizawa, T. Ishikawa, M. Katsuki, T. Muto, T. Taniguchi, N. Tanaka, Loss of transcription factor IRF-1 affects tumor susceptibility in mice carrying the Ha-ras transgene or nullizygosity for p53, *Genes Dev.* 1–3 (1999) 1240–1245.
- [123] N. Tanaka, M. Ishihara, M. Kitagawa, H. Harada, T. Kimura, T. Matsuyama, M.S. Lamphier, S. Aizawa, T.W. Mak, T. Taniguchi, Cellular commitment to oncogene-induced transformation or apoptosis is dependent on the transcription factor IRF-1, *Cell* 77 (1994) 829–839.
- [124] N. Tanaka, M. Ishihara, M.S. Lamphier, H. Nozawa, T. Matsuyama, T.W. Mak, S. Aizawa, T. Tokino, M. Oren, T. Taniguchi, Cooperation of the tumour suppressors IRF-1 and p53 in response to DNA damage, *Nature* 382 (1996) 816–818.
- [125] A. Moro, A. Santos, M.J. Arana, S.E. Perea, Activation of the human p27(Kip1) promoter by IFNalpha 2b, *Biochem. Biophys. Res. Commun.* 269 (2000) 31–34.
- [126] J. Sanceau, J. Hiscott, O. Delattre, J. Wietzerbin, IFN-beta induces serine phosphorylation of Stat-1 in Ewing's sarcoma cells and mediates apoptosis via induction of IRF-1 and activation of caspase-7, *Oncogene* 19 (2000) 3372–3383.
- [127] K. Suk, I. Chang, Y.H. Kim, S. Kim, J.Y. Kim, H. Kim, M.S. Lee, Interferon gamma (IFNgamma) and tumor necrosis factor alpha synergism in ME-180 cervical cancer cell apoptosis and necrosis. IFNgamma inhibits cytoprotective NF-kappa B through STAT1/IRF-1 pathways, *J. Biol. Chem.* 276 (2001) 13153–13159.
- [128] W.A. Chow, J.J. Fang, J.K. Yee, The IFN regulatory factor family participates in regulation of Fas ligand gene expression in T cells, *J. Immunol.* 164 (2000) 3512–3518.
- [129] T.C. Skaar, K.B. Bouker, R. Clarke, Interferon regulatory factor-1 (IRF-1) in breast cancer, *Proc. Am. Assoc. Cancer Res.* 41 (2000) 428.
- [130] K.B. Bouker, T.C. Skaar, R. Clarke, IRF-1 as a mediator of responsiveness to antiestrogens in breast cancer, *Proc. Am. Assoc. Cancer Res.* 41 (2000) 427–428.
- [131] Z. Gu, J. Hanfelt, C. Hurley, H. Xiao, F. Gray, D. Flessate-Harley, R. Clarke, High throughput gene expression profiles associated with antiestrogen responsive vs. resistant breast cancer cells, *Proc. Am. Assoc. Cancer Res.* 40 (1999) 158–159.
- [132] P.K.M. Kim, M. Armstrong, Y. Liu, P. Yan, B. Bucher, B.S. Zuckerbraun, A. Gambotto, T.R. Billiar, J.H. Yim, IRF-1 expression induces apoptosis and inhibits tumor growth in mouse mammary cancer cells in vitro and in vivo, *Oncogene* 23 (2004) 1125–1135.
- [133] Y. Tu, D.J. Jerry, B. Pazik, S.S. Smith, Sensitivity to DNA damage is a common component of hormone-based strategies for protection of the mammary gland, *Mol. Cancer Res.* 3 (2005) 435–442.
- [134] M.L. Bowie, E.C. Dietze, J. Delrow, G.R. Bean, M.M. Troch, R.J. Marjoram, V.L. Seewaldt, Interferon-regulatory factor-1 is critical for tamoxifen-mediated apoptosis in human mammary epithelial cells, *Oncogene* 23 (2004) 8743–8755.
- [135] J.H. Yim, S.H. Ro, J.K. Lowney, S.J. Wu, J. Connett, G.M. Doherty, The role of interferon regulatory factor-1 and interferon regulatory factor-2 in IFN-gamma growth inhibition of human breast carcinoma cell lines, *J. Interferon Cytokine Res.* 23 (2003) 501–511.
- [136] E. Pizzoferrato, Y. Liu, A. Gambotto, M.J. Armstrong, M.T. Stang, W.E. Gooding, S.M. Alber, S.H. Shand, S.C. Watkins, W.J. Storkus, J.H. Yim, Ectopic expression of interferon regulatory factor-1 promotes human breast cancer cell death and results in reduced expression of survivin, *Cancer Res.* 64 (2004) 8381–8388.
- [137] W.F. Tam, R. Sen, Ikb family members function by different mechanisms, *J. Biol. Chem.* 276 (2001) 7701–7704.
- [138] A. Yaron, A. Hatzubai, M. Davis, I. Lavon, S. Amit, A.M. Manning, J.S. Andersen, M. Mann, F. Mercurio, Y. Ben Neria, Identification of the receptor component of the IkappaBalpha-ubiquitin ligase, *Nature* 396 (1998) 590–594.
- [139] V. Bours, M. Bentes-Alj, A.C. Hellin, P. Viatour, P. Robe, S. Delhalle, V. Benoit, M.P. Merville, Nuclear factor-kappa B, cancer, and apoptosis, *Biochem. Pharmacol.* 60 (2000) 1085–1089.
- [140] H. Nakshatri, P. Bhat-Nakshatri, D.A. Martin, R.J. Goulet, G.W. Sledge, Constitutive activation of NF-kappaB during progression of breast cancer to hormone-independent growth, *Mol. Cell Biol.* 17 (1997) 3629–3639.
- [141] D.K. Biswas, A.P. Cruz, E. Gansberger, A.B. Pardee, Epidermal growth factor-induced nuclear factor kappa B activation: a major pathway of cell-cycle

- progression in estrogen-receptor negative breast cancer cells, *Proc. Natl. Acad. Sci. U.S.A.* 97 (2000) 8542–8547.
- [142] R.B. Dickson, M.E. Lippman, Growth factors in breast cancer, *Endocr. Rev.* 16 (1995) 559–589.
- [143] R.W. Clarkson, C.J. Watson, NF-kappaB and apoptosis in mammary epithelial cells, *J. Mammary Gland Biol. Neoplasia* 4 (1999) 165–175.
- [144] D.W. Kim, M.A. Sovak, G. Zanieski, G. Nonet, R. Romieu-Mourez, A.W. Lau, L.J. Hafer, P. Yaswen, M. Stampfer, A.E. Rogers, J. Russo, G.E. Sonenshein, Activation of NF-kappaB/Rel occurs early during neoplastic transformation of mammary cells, *Carcinogenesis* 21 (2000) 871–879.
- [145] S. Tonko-Geymayer, W. Doppler, An essential link to mammary cancer? *Nat. Med.* 8 (2002) 108–110.
- [146] P.C. Cogswell, D.C. Guttridge, W.K. Funkhouser, A.S. Baldwin Jr., Selective activation of NF-kappa B subunits in human breast cancer: potential roles for NF-kappa B2/p52 and for Bcl-3, *Oncogene* 19 (2000) 1123–1131.
- [147] M.A.C. Pratt, T.E. Bishop, D. White, G. Yasvinski, M. Menard, M.Y. Niu, R. Clarke, Estrogen withdrawal-induced NF-kappaB activity and bcl-3 expression in breast cancer cells: roles in growth and hormone independence, *Mol. Cell Biol.* 23 (2003) 6887–6900.
- [148] N. Br  nner, V. Boulay, A. Fojo, C. Freter, M.E. Lippman, R. Clarke, Acquisition of hormone-independent growth in MCF-7 cells is accompanied by increased expression of estrogen-regulated genes but without detectable DNA amplifications, *Cancer Res.* 53 (1993) 283–290.
- [149] S.P. Hehner, T.G. Hofmann, W. Droge, M.L. Schmitz, The antiinflammatory sesquiterpene lactone parthenolide inhibits NF- kappa B by targeting the I kappa B kinase complex, *J. Immunol.* 163 (1999) 5617–5623.
- [150] Y. Zhu, A. Wang, M.C. Liu, A. Zwart, R.Y. Lee, A. Gallagher, Y. Wang, W.R. Miller, J.M. Dixon, R. Clarke, Estrogen receptor alpha (ER) positive breast tumors and breast cancer cell lines share similarities in their transcriptome data structures, *Int. J. Oncol.* 29 (2006) 1581–1589.
- [151] C.J. Creighton, K.E. Cordero, J.M. Larios, R.S. Miller, M.D. Johnson, A.M. Chinnaiyan, M.E. Lippman, J.M. Rae, Genes regulated by estrogen in breast tumor cells in vitro are similarly regulated in vivo in tumor xenografts and human breast tumors, *Genome Biol.* 7 (2006) R28.
- [152] Y. Zhu, B. Singh, S. Hewitt, A. Liu, B. Gomez, A. Wang, R. Clarke, Expression patterns among interferon regulatory factor-1, human X-box binding protein-1, nuclear factor kappa B, nucleophosmin, estrogen receptor alpha and progesterone receptor proteins in breast cancer tissue microarrays, *Int. J. Oncol.* 28 (2006) 67–76.
- [153] A. de la Fuente, N. Bing, I. Hoeschele, P. Mendes, Discovery of meaningful associations in genomic data using partial correlation coefficients, *Bioinformatics* 20 (2004) 3565–3574.
- [154] M.P. Davies, D.L. Barraclough, C. Stewart, K.A. Joyce, R.M. Eccles, R. Barraclough, P.S. Rudland, D.R. Sibson, Expression and splicing of the unfolded protein response gene XBP-1 are significantly associated with clinical outcome of endocrine-treated breast cancer, *Int. J. Cancer* 123 (2008) 85–88.
- [155] T.C. Skaar, S.C. Prasad, S. Sharaeh, M.E. Lippman, N. Br  nner, R. Clarke, Two-dimensional gel electrophoresis analyses identify nucleophosmin as an estrogen regulated protein associated with acquired estrogen-independence in human breast cancer cells, *J. Steroid Biochem. Mol. Biol.* 67 (1998) 391–402.
- [156] T. Kondo, N. Minamino, T. Nagamura-Inoue, M. Matsumoto, T. Taniguchi, N. Tanaka, Identification and characterization of nucleophosmin/B23/numatrin which binds the anti-oncogenic transcription factor IRF-1 and manifests oncogenic activity, *Oncogene* 15 (1997) 1275–1281.
- [157] B. Brankin, T.C. Skaar, B.J. Trock, M. Berris, R. Clarke, Autoantibodies to numatrin: an early predictor for relapse in breast cancer, *Cancer Epidemiol. Biomarkers Prev.* 7 (1998) 1109–1115.
- [158] M. Saura, C. Zaragoza, C. Bao, A. McMillan, C.J. Lowenstein, Interaction of interferon regulatory factor-1 and nuclear factor kappaB during activation of inducible nitric oxide synthase transcription, *J. Mol. Biol.* 289 (1999) 459–471.
- [159] P.D. Drew, G. Franzoso, K.G. Becker, V. Bours, L.M. Carlson, U. Siebenlist, K. Ozato, NF kappa B and interferon regulatory factor 1 physically interact and synergistically induce major histocompatibility class I gene expression, *J. Interferon Cytokine Res.* 15 (1995) 1037–1045.
- [160] M. Karin, Y. Cao, F.R. Greten, Z.W. Li, NF-kappaB in cancer: from innocent bystander to major culprit, *Nat. Rev. Cancer* 2 (2002) 301–310.