

**AFRL-ML-WP-TP-2006-421**

**PROCESSING AND  
CHARACTERIZATION OF SHAPE  
MEMORY POLYMER  
NANOCOMPOSITES (PREPRINT)**

**David Fortener**



**FEBRUARY 2006**

**This is a Small Business Innovation Research (SBIR) Phase II report.**

**Approved for public release; distribution is unlimited.**

**STINFO COPY**

**This work, resulting in whole or in part from Department of the Air Force contract FA8650-05-C-5047, has been submitted to The Society for the Advancement of Material and Process Engineering (SAMPE) 2006 Conference Proceedings. If this work is published, SAMPE may assert copyright. The United States has for itself and others acting on its behalf an unlimited, paid-up, nonexclusive, irrevocable worldwide license to use, modify, reproduce, release, perform, display, or disclose the work by or on behalf of the Government. All other rights are reserved by the copyright owner.**

**MATERIALS AND MANUFACTURING DIRECTORATE  
AIR FORCE RESEARCH LABORATORY  
AIR FORCE MATERIEL COMMAND  
WRIGHT-PATTERSON AIR FORCE BASE, OH 45433-7750**

## NOTICE AND SIGNATURE PAGE

Using Government drawings, specifications, or other data included in this document for any purpose other than Government procurement does not in any way obligate the U.S. Government. The fact that the Government formulated or supplied the drawings, specifications, or other data does not license the holder or any other person or corporation; or convey any rights or permission to manufacture, use, or sell any patented invention that may relate to them.

This report was cleared for public release by the Air Force Research Laboratory Wright Site (AFRL/WS) Public Affairs Office and is available to the general public, including foreign nationals. Copies may be obtained from the Defense Technical Information Center (DTIC) (<http://www.dtic.mil>).

AFRL-ML-WP-TP-2006-421 HAS BEEN REVIEWED AND IS APPROVED FOR PUBLICATION IN ACCORDANCE WITH ASSIGNED DISTRIBUTION STATEMENT.

//Signature//

---

SHANE B. JUHL, Program Manager  
Polymers Branch  
Nonmetallic Materials Division

//Signature//

---

JOHN F. MAGUIRE, Chief  
Polymers Branch  
Nonmetallic Materials Division

//Signature//

---

PERSIS A. ELWOOD, Deputy Chief  
Nonmetallic Materials Division  
Materials and Manufacturing Directorate

This report is published in the interest of scientific and technical information exchange, and its publication does not constitute the Government's approval or disapproval of its ideas or findings.

\*Disseminated copies will show “//Signature//” stamped or typed above the signature blocks.

<b>REPORT DOCUMENTATION PAGE</b>				<i>Form Approved</i> OMB No. 0704-0188	
The public reporting burden for this collection of information is estimated to average 1 hour per response, including the time for reviewing instructions, searching existing data sources, gathering and maintaining the data needed, and completing and reviewing the collection of information. Send comments regarding this burden estimate or any other aspect of this collection of information, including suggestions for reducing this burden, to Department of Defense, Washington Headquarters Services, Directorate for Information Operations and Reports (0704-0188), 1215 Jefferson Davis Highway, Suite 1204, Arlington, VA 22202-4302. Respondents should be aware that notwithstanding any other provision of law, no person shall be subject to any penalty for failing to comply with a collection of information if it does not display a currently valid OMB control number. <b>PLEASE DO NOT RETURN YOUR FORM TO THE ABOVE ADDRESS.</b>					
<b>1. REPORT DATE (DD-MM-YY)</b> February 2006		<b>2. REPORT TYPE</b> Conference Paper Preprint		<b>3. DATES COVERED (From - To)</b>	
<b>4. TITLE AND SUBTITLE</b> PROCESSING AND CHARACTERIZATION OF SHAPE MEMORY POLYMER NANOCOMPOSITES (PREPRINT)				<b>5a. CONTRACT NUMBER</b> FA8650-05-C-5047	
				<b>5b. GRANT NUMBER</b>	
				<b>5c. PROGRAM ELEMENT NUMBER</b> 65502F	
<b>6. AUTHOR(S)</b> David Fortener				<b>5d. PROJECT NUMBER</b> 3005	
				<b>5e. TASK NUMBER</b> ML	
				<b>5f. WORK UNIT NUMBER</b> 113T0100	
<b>7. PERFORMING ORGANIZATION NAME(S) AND ADDRESS(ES)</b> Cornerstone Research Group, Inc. 2750 Indian Ripple Road Dayton, OH 45440				<b>8. PERFORMING ORGANIZATION REPORT NUMBER</b>	
<b>9. SPONSORING/MONITORING AGENCY NAME(S) AND ADDRESS(ES)</b> Materials and Manufacturing Directorate Air Force Research Laboratory Air Force Materiel Command Wright-Patterson AFB, OH 45433-7750				<b>10. SPONSORING/MONITORING AGENCY ACRONYM(S)</b> AFRL-ML-WP	
				<b>11. SPONSORING/MONITORING AGENCY REPORT NUMBER(S)</b> AFRL-ML-WP-TP-2006-421	
<b>12. DISTRIBUTION/AVAILABILITY STATEMENT</b> Approved for public release; distribution is unlimited.					
<b>13. SUPPLEMENTARY NOTES</b> This is a Small Business Innovation Research (SBIR) Phase II report. This paper contains color. PAO Case Number: AFRL/WS 06-0546, 24 Feb 2006. This work, resulting in whole or in part from Department of the Air Force contract FA8650-05-C-5047, has been submitted to The Society for the Advancement of Material and Process Engineering (SAMPE) 2006 Conference Proceedings. If this work is published, SAMPE may assert copyright. The United States has for itself and others acting on its behalf an unlimited, paid-up, nonexclusive, irrevocable worldwide license to use, modify, reproduce, release, perform, display, or disclose the work by or on behalf of the Government. All other rights are reserved by the copyright owner.					
<b>14. ABSTRACT</b> This report was developed under a SBIR contract. Cornerstone Research Group, Inc. (CRG) has demonstrated the feasibility of adding nanoparticulates into their shape memory polymer (SMP) resin systems. Under thermal or other stimuli, SMPs can exhibit a radical change from a rigid polymer to a flexible, elastic state, and then back to a rigid state again. Nanoparticles, including carbon nanofibers and carbon nanotubes, are expected to increase material properties such as electrical conductivity, thermal conductivity, and mechanical properties. CRG has demonstrated this on a lab-scale. For end use purposes, these results must be transitioned to large-scale manufacturing. This paper will discuss the process of transitioning SMP nanocomposites from lab-scale to large-scale production. In order to verify the properties after scale-up, the scaled-up samples of various percent loading of nanoparticles will undergo thorough testing to include, but not be limited to, electrical conductivity, thermal conductivity, and dispersion study in the resin using a scanning electron microscope (SEM).					
<b>15. SUBJECT TERMS</b> SBIR Report, Nanocomposites, Smart Materials, Advanced Composite Materials					
<b>16. SECURITY CLASSIFICATION OF:</b>			<b>17. LIMITATION OF ABSTRACT:</b> SAR	<b>18. NUMBER OF PAGES</b> 28	<b>19a. NAME OF RESPONSIBLE PERSON (Monitor)</b> Shane B. Juhl <b>19b. TELEPHONE NUMBER (Include Area Code)</b> N/A
<b>a. REPORT</b> Unclassified	<b>b. ABSTRACT</b> Unclassified	<b>c. THIS PAGE</b> Unclassified			



*Cornerstone Research Group, Inc.*

*Applying Tomorrow's Materials Today...*

---

9 February 2006

Shane Juhl  
Material Research Engineer  
AFRL/MLBP  
2941 Hobson Way, Bldg. 654, Rm. 138  
WPAFB, OH 45433-7750

Subject: Request for Public Release Approval for Information Related to Contract  
FA8650-05-C-5047, Hierarchical Shape Recovery Polymer  
Nanocomposites (PNCs) for Next-Generation Aerosystem Applications

Dear Mr. Juhl:

The attached material is submitted for Government public release approval. Please advise me of the Government case number and approval reference number.

I certify that internal company technical and information security reviews have been accomplished and, to the best of our knowledge, this information is technically accurate; does not disclose proprietary, classified, or militarily critical technology information; does not violate copyright laws; and is suitable for public release.

The attached draft AFRL Form 6 defines the planned initial release of this information and presents our best understanding of appropriate form content pertaining to that release. However, we specifically request Government confirmation regarding the issues addressed in the form's Block 9. This letter constitutes the "waiver letter" required by the form's Block 11.

For follow-up in this matter, please contact me at (937) 320-1877, Fax (937) 320-1886, or e-mail [rayburnkk@crgrp.net](mailto:rayburnkk@crgrp.net).

Sincerely,

Kimberly K. Rayburn  
Public Affairs Coordinator

2 Attachments

1. Draft SAMPE Proceedings
2. Draft AFRL Form 6, "Public Affairs Security and Policy Review, Request for Public Release Clearance"

# **Processing and Characterization of Shape Memory Polymer Nanocomposites**

David Fortener  
Cornerstone Research Group  
Dayton, OH 45440

## **ABSTRACT**

Cornerstone Research Group, Inc. (CRG) has demonstrated the feasibility of adding nanoparticulates into their shape memory polymer (SMP) resin systems. Under thermal or other stimuli, SMPs can exhibit a radical change from a rigid polymer to a flexible, elastic state, and then back to a rigid state again. Nanoparticles, including carbon nanofibers and carbon nanotubes, are expected to increase material properties such as electrical conductivity, thermal conductivity, and mechanical properties. CRG has demonstrated this on a lab-scale. For end use purposes, these results must be transitioned to large-scale manufacturing. This paper will discuss the process of transitioning SMP nanocomposites from lab-scale to large-scale production. In order to verify the properties after scale-up, the scaled-up samples of various percent loading of nanoparticles will undergo thorough testing to include, but not be limited to, electrical conductivity, thermal conductivity, and dispersion study in the resin using a scanning electron microscope (SEM).

**KEYWORDS:** Nanocomposites, Smart Materials, Advanced Composite Materials

## **1. INTRODUCTION**

Polymer nanocomposites (PNC) are a new class of composites in which polymers have been reinforced with small quantities of nano-sized particles having high aspect ratios ( $L/h > 300$ ) [1]. PNCs have been shown to offer remarkable property enhancements relative to conventionally scaled composites [2]. The addition of low-volume fractions of nanoparticles, such as carbon nanofibers or carbon nanotubes, into polymer matrix has provided unique thermal and electrical properties not normally possible with traditional fillers [3]. Thus, CRG can envision enhanced performance and new capabilities, such as unique triggering mechanisms for shape recovery beyond direct external thermal heating, by integration of these two material concepts (shape recovery polymers and nanocomposites).

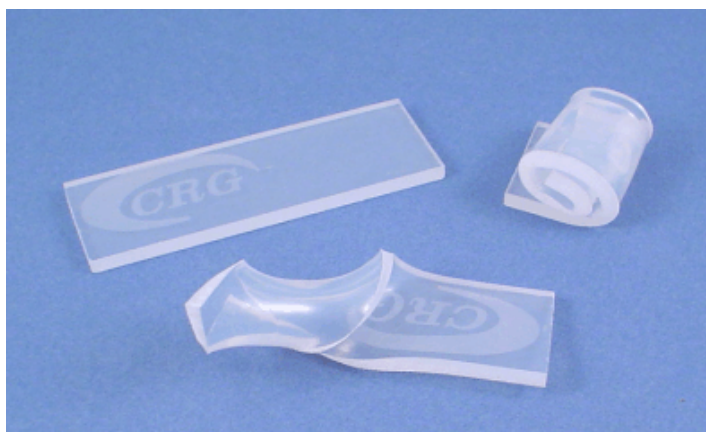
Nanoparticle additives can provide benefits in comparison to both their conventional filler counterparts and base polymer. Mechanical, thermal, and electrical properties have been shown to undergo substantial improvements [1]. The addition of nanofibers to increase electrical conductivity is already being used in conductive paint applications, in the case of automotive

**PREPRINT**

side mirror housings [4]. In addition, it is important to recognize that nanoparticulate loading offers significant property improvements with very low loading levels. This, in turn, can result in significant weight reductions (of obvious importance for various military and aerospace applications) compared with conventional composite materials for similar performance [1].

At the forefront of shape memory polymer (SMP) technology, CRG has been researching SMP since 1998 under the trade name Veriflex™. SMPs are polymers whose qualities have been altered to give them dynamic shape “memory” properties. Under thermal stimuli, SMPs can exhibit a radical change from a rigid polymer to a very flexible elastic state, and then back to a rigid state again. In its elastic state, SMP will recover its “memory” shape if left unrestrained. Veriflex™ is used as the resin matrix for composites, which offers several benefits in terms of manufacturing composite parts. SMP composites are similar to other high-performance composites, with the exception that SMP resin is used as the matrix resin, which makes these composites extraordinary. SMP composites allow for easy manipulation of the composite above the activation temperature, while affording high strength and stiffness at lower temperatures. The SMP composite acquires some SMP characteristics, making it a unique material for use in dynamic structures and other applications requiring both load strength and “shape-shifting” modulus flexibility.

There are three types of shape memory polymers: partially cured resins, thermoplastics, and fully cured thermoset systems. Through years of research, CRG has found limitations and drawbacks to the first two types of SMP. Partially cured resins continue to cure during operation and change properties with every cycle. Thermoplastic SMP “creeps,” which means it gradually “forgets” its memory shape over time. With this supporting research and a thorough understanding of the chemical mechanisms of SMP, CRG has developed fully cured, high-performance thermoset systems. These systems are trademarked as Veriflex™ (see Figure 1). The memorized shape is the flat, rectangular coupon. Veriflex™ can be heated, then twisted, rolled, stretched, or compressed. It can then be cooled to maintain the new shape in a rigid state. Heated above its glass transition temperature again, it will return to its memorized shape.

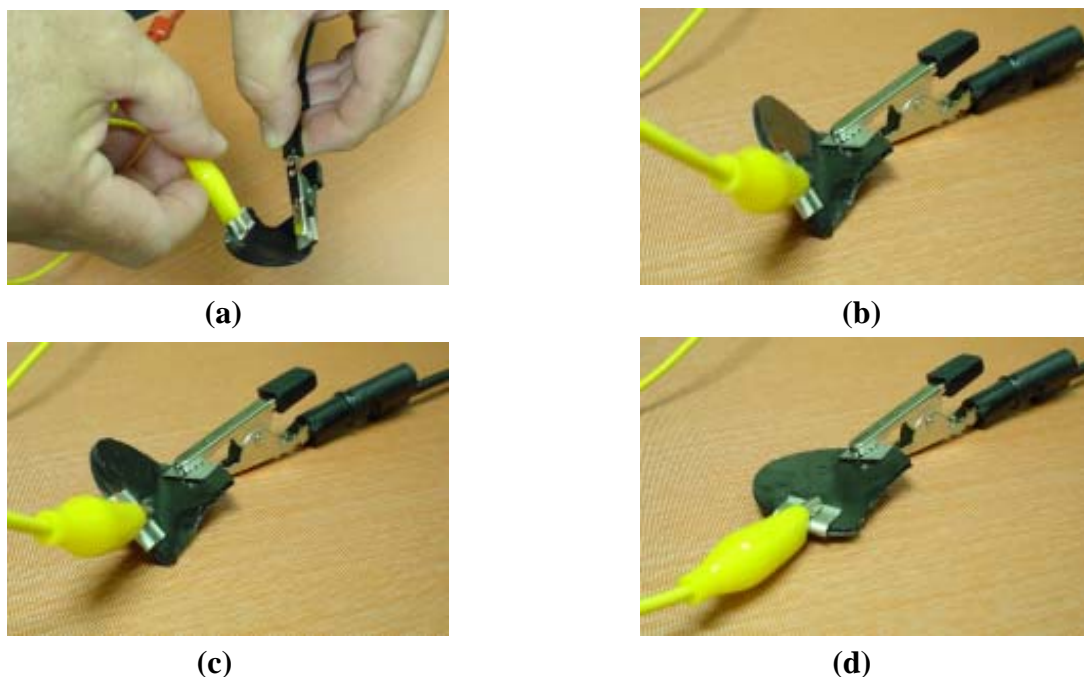


**Figure 1: Veriflex™ shape memory polymer coupons**

A polymer engineered with shape memory characteristics provides a unique set of material qualities and capabilities that enhance traits inherent in the polymer system itself. Veriflex™ can



be chemically formulated with a glass transition temperature to match any application need. It can be cast and cured into a wide variety of “memorized” shapes, including thick sheets, concave dishes, and even very tiny parts. Developing alternative activation mechanisms will improve response time, efficiency, and lessen the general drawbacks with external thermal heating. The addition of electrically and thermally conductive nanoparticles will allow for these alternative means. Figure 2 depicts the ability of SMP nanocomposites to be activated using Joule heating.



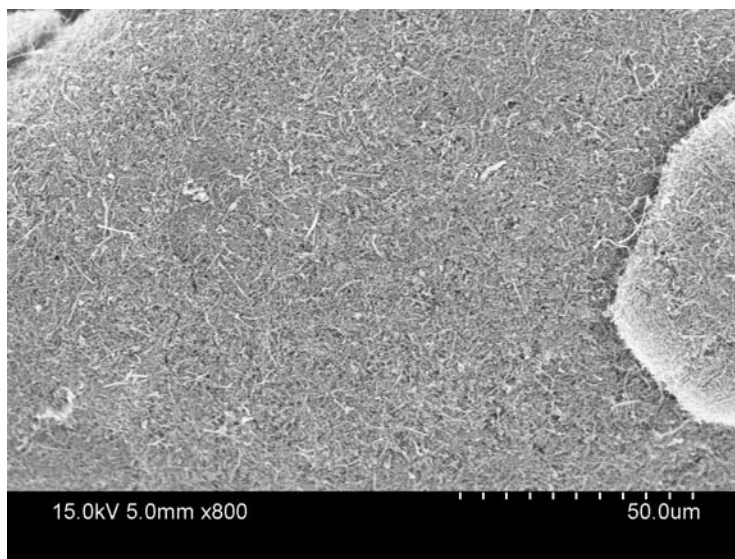
**Figure 2: Deformation and deployment of CNF-SMP nanocomposite (7 wt % CNF) by Joule heating. (a) Deformation after the nanocomposite was heated up past the  $T_g$  by passing an electric current through the sample; (b, c, and d) different stages of deployment from the rigid state to the original shape as the nanocomposite was heated by Joule heating**

CRG has demonstrated the addition of nanofibers to SMP on a lab-scale. For end-use purposes, these results must be transitioned to large-scale manufacturing. This paper will discuss the process of taking SMP nanocomposites from lab-scale to large-scale production. In order to verify the properties after scale-up, the scaled-up samples of various percent loading of nanoparticles will undergo thorough testing to include, but not be limited to, electrical conductivity, thermal conductivity, and dispersion study in the resin using a scanning electron microscope (SEM).

## 2. MATERIALS

The resin used in this study is a styrene-based shape memory polymer (SMP) designed and developed by Cornerstone Research Group. The resin is styrene-based SMP, VF-62 (CRG Industries, Dayton, OH). This resin is a thermoset resin that must be cured in a closed mold to inhibit the styrene from boiling off. From previous research, it was found that with the addition of carbon nanofibers, the resin must cure at 85 °C for twenty-four hours. The carbon nanofibers used in this study are Pyrograf® PR-24-XT-LHT-LD. These fibers were obtained from Applied

Sciences, Inc. (Cedarville, OH). Pyrograf® fibers are produced through vapor growth, which is a catalytic process of hydrocarbons in the vapor state [5]. Their configuration is what gives the fibers their physical properties, including electrical and thermal conductivity [6]. The nanofibers themselves tend to clump together due to Van der Waals forces [7]. This can be seen with a SEM image of the fibers received as is in Figure 3. The use of a continuous mixer will aid in the breaking up and dispersion of these nanofibers.



**Figure 3: SEM of Pyrograf® PR-24-XT-LHT-LD carbon nanofibers as received**

### **3. EXPERIMENTAL**

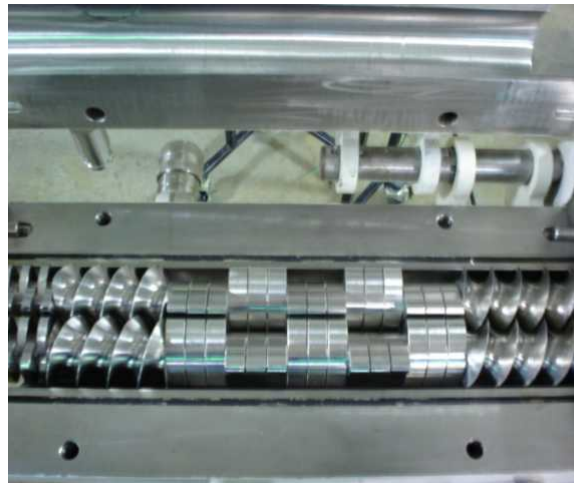
**3.1 Large-Scale Production** Creating a homogenous mixture of the SMP and a nanoparticulate on a large scale is a difficult task. A process must be implemented that will result in repetitive successful homogenous mixtures of the resin and nanoparticulate. Handmixing the resin and the nanoparticulate will be one approach to scale up from lab-scale to manufacturing-scale process. A more economical and efficient mixing method is the use of a continuous mixer. CRG is a beta-site for a Readco Continuous Mixer which will be used for the scale-up process for the SMP nanocomposites. Figure 4 shows the machine to be used for the mixing of the SMP and the nanoparticles.





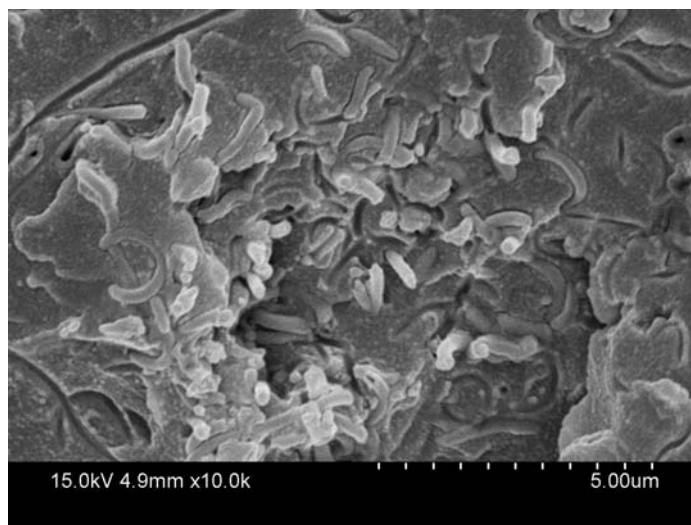
**Figure 4: Readco 2-inch Continuous Processor**

The paddle configuration inside the Readco continuous mixer can be changed in order to optimize the mixing process. The mixing can vary from very low shear to very high shear mixing. Figure 5 shows a sample of the paddle configuration inside the barrel of Readco continuous processor.



**Figure 5: Paddle Configuration of the Readco Continuous Mixer**

**3.2 Dispersion Verification** Verifying that the carbon nanofibers are dispersed into the SMP matrix is a critical step. The improvement of both electrical and thermal conductivity relies on the nanofibers creating a continuous network throughout the polymer. An uneven dispersion would cause the nanofibers to act as filler, rather than an improvement. In order to verify that the resulting nanocomposites contain evenly dispersed nanofibers, samples of different weight percentage will be examined using a scanning electron microscope (SEM). This high powered microscope will allow CRG to determine how well the nanofibers are being mixed into the SMP after scale up. Figure 6 shows dispersion of carbon nanofibers and SMP mixed by a small-scale automated mixer.

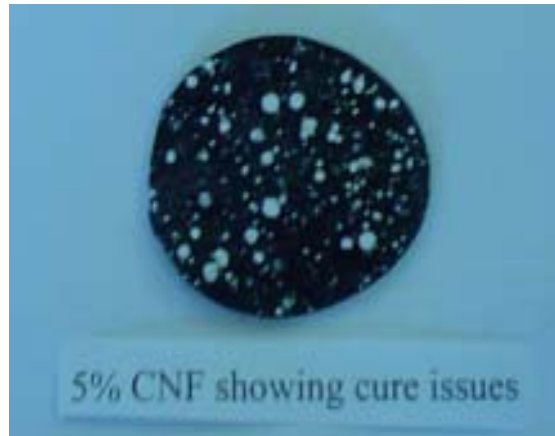


**Figure 6: SEM of SMP nanocomposite showing good dispersion of nanofibers in polymeric matrix**

**3.3 Characterization** Using in-house equipment, CRG has tested the nanocomposites to verify the improved electrical and thermal properties of the product. Using an automated 4-point probe and computer software, the electrical conductivity of the nanocomposite will be determined. Carbon nanofibers are a highly conductive material and the addition of these fibers into an inherently non-conductive polymer will result in an electrically conductive SMP. The resulting SMP will be able to be activated using electricity, instead of an external heating element. The new, intrinsically conductive SMP can then be implemented into any number of systems needing quick shape shifting mechanisms without needing an external heating mechanism. The ability of an SMP to be heated quickly and evenly is extremely important. The addition of carbon nanofibers, which are good thermal conductors, are expected to increase the thermal conductivity. The resulting nanocomposite can then be heated quickly and be employed in operation needing quick activation to accommodate shape change.

## 4. RESULTS AND DISCUSSION

**4.1 Large-Scale Production** Initially, CRG used a handmixing method to incorporate the nanofibers into the SMP resin matrix to fabricate larger parts. This resulted in unevenly dispersed fibers in the matrix, and it is not conducive to large-scale production of either resin or cured sheets of material. Handmixing on a small scale has been replaced with a small-scale automated mixer. This new process is getting good dispersion as seen from Figure 6 as well as through electrical conductivity measurements. An issue with curing was also a problem with handmixing the nanofibers into the resin. “Hot spots” appeared in sample made with hand mixing, as seen in Figure 7.

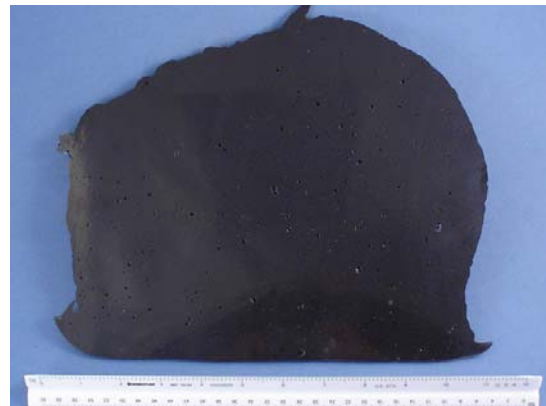


**Figure 7: Nanocomposite showing “hot spots” from cure issues incurred during the hand mixing of nanofibers into SMP**

The next trial for scale up was to incorporate the Readco Continuous Mixer into the mixing process. This process was less time consuming and more efficient in mixing in the nanofibers. Figure 8 shows two sheets of cured material of different weight percent loadings, with no sign of cure issues or of “hot spots.”



**(a)**

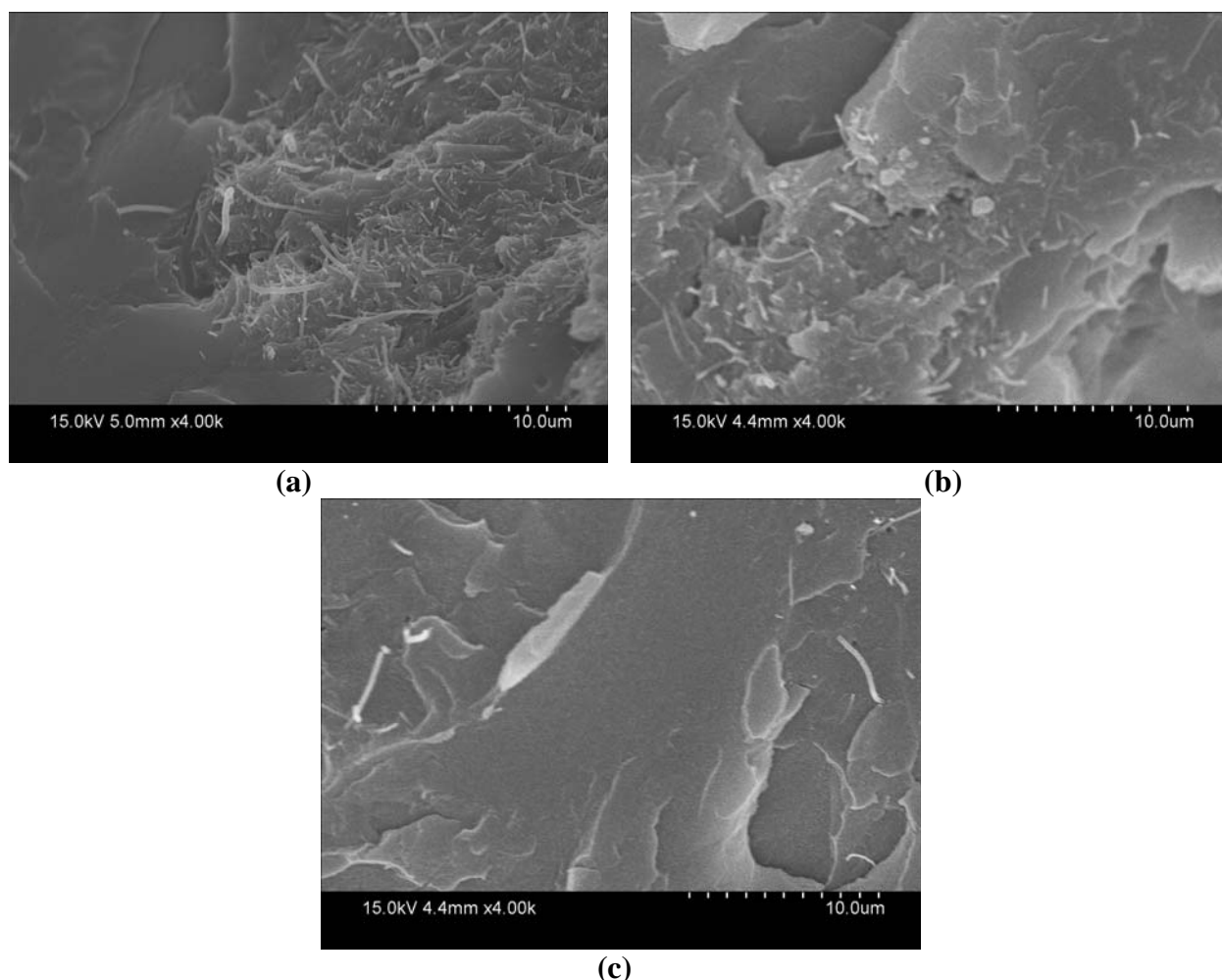


**(b)**

**Figure 8: Cured nanocomposite of varying weight percentage. Item (a) had a loading of 2% by weight while item (b) has a 7% by weight loading.**

The continuous mixing process reduced the time and man hours needed to mix the nanofibers into the SMP resin. The continuous mixer also allows for much higher weight % loadings than can be attempted by hand. The mechanical energy produced by the machine far exceeds that of human-powered mixing.

**4.2 Dispersion Verification** In order to confirm that the mixing process in the Readco was producing well dispersed nanocomposite, the samples needed to be examined at under high magnification, as discussed in Section 2.2. Figure 9 shows SEMs of 2% by weight nanocomposite and a 7% by weight nanocomposite.



**Figure 9: (a) SEM at 4000x of a 2% by weight loading nanocomposite showing an uneven dispersion of the nanofibers in the SMP matrix. SEM at 4000x of a 7% by weight loading nanocomposite showing both fiber rich (b) and resin rich areas (c).**

The first iteration of using the Readco to incorporate the carbon nanofibers into the SMP was successful in that no cure issues were encountered as well as demonstrating a more efficient process for integrating the nanofibers into the SMP. However, the dispersion of the CNF in these nanocomposites were not ideal, as shown in Figure 9, further iterations with more aggressive mixing paddle configurations inside the Readco mixing chamber should result in a more evenly dispersed resin.

**4.3 Characterization** Two of the most important properties that the addition of carbon nanofibers will improve are thermal and electrical conductivity. SMP is not an electrically conductive polymer. Previous testing of the nanofibers for electrical conductivity showed that loadings under 2% did not demonstrate any detectable change in the properties of the material. Once the fiber loading was over 2%, noticeable changes ensued. The following table shows the results of electrical conductivity of a nanocomposite with 5% nanofibers hand mixed on a small scale.

Position in X Direction mm	Position in Y Direction mm	Sheet Resistance (ohm)	Resistivity o-cm	Thickness microns
0	0	939.3	126.8	1350
90	0	1290.1	174.1	1350
0	90	329.7	44.5	1350
-90	0	673.6	90.9	1350
0	-90	1556.8	210.1	1350

**Table 1: Electrical conductivity data for a 5% by weight loading of carbon nanofibers into SMP**

Resistivity is the inherent property of the material which gives it electrical resistance. It is sometimes called specific resistance. Sheet resistance is the resistance of a thin sheet of material which when multiplied by the thickness (in cm) gives the value of resistivity. As can be seen from the data, the 5% loading of carbon nanofibers handmixed into the SMP results in a conductive polymer. When the nanocomposites mixed using the continuous mixer were tested, the inadequate mixing of the fibers into the polymeric matrix was apparent. The material behaved as if there were no fibers in the composite and did not register any conductivity. However, once the mixing of nanofibers into SMP using the Readco is optimized, results comparable to these can be expected.

The thermal conductivity unit measures thermo-physical properties according to ASTM D5930 [8]. Values for thermal conductivity are express in units W/mK, are determined within the range of -15 °C and 50 °C. Thermal conductivity data of the first iteration of mixing was determined using this apparatus. Table 2 shows the results of the thermal conductivity testing.

Weight % of carbon nanofibers	Thermal Conductivity (W/mk)
0	0.17
2	0.177
7	0.164

**Table 2: Thermal conductivity data carbon nanofibers-SMP nanocomposite**

The thermal conductivity data demonstrates that the non-uniform dispersion of the nanofibers in the SMP results in an inconsistent improvement of the thermal conductivity. A slight increase was seen in the 2% loading while a slight decrease was seen in the 7% loading. Theoretically, the thermal conductivity should not decrease at higher loading. This characterization method requires a material sample large enough to acquire a bulk property representation. The thickness of the samples tested was not thick enough to accommodate this requirement and had to be stacked on top of each other to achieve an adequate thickness. In stacking the samples, the interface between each sheet introduces an additional variable that may have skewed the results. Thicker samples will be fabricated and analyzed to confirm this theory.

## 5. SUMMARY AND CONCLUSIONS

CRG has demonstrated the ability to incorporate carbon nanofibers and improve the properties of the material on a lab-scale. The ability to transition this success to a larger scale is a difficult, long process. The first few steps toward this process have been accomplished. CRG has demonstrated the ability to mix nanofibers into SMP on a large-scale and have not encountered any cure issues. By changing the paddle configuration on the Readco continuous mixer, the mixer can vary the shear level from high shear to little or no shear mixing. This capability should enable even dispersion of the nanofibers. Future work will optimize the paddle configuration for the Readco to enable even dispersion for the improvement of electrical and thermal conductivity.

## 6. REFERENCES

1. National Research Council Canada, Technology Group on Polymer Nanocomposites- PNC-Tech, <http://www.imi.cnrc-nrc.gc.ca/english/Default.htm>.
2. Zhu, J., et al., "Reinforcing Epoxy Polymer Composites through Covalent Integration of Functionalized Nanotubes", *Advanced Functional Materials*, No. 7, 2004, pp.643-648.
3. Zeng, J., et al., "Processing and properties of poly(methyl methacrylate)/carbon nanofibers composites", *Composites: Part B*, 35, 2004, pp245-249.
4. Lozano, K., Bonilla-Rios, E., Barrera, V., "A Study on Nanofiber-Reinforced Thermoplastic Composites (II): Investigation of the mixing Rheology and Conduction Properties", *Journal of Applied Polymer Science*, Vol. 80, 2001, pp1162-1172.
5. <http://www.apsci.com>
6. Lozano, K., Barrera, V., "Nanofiber-Reinforced Thermoplastic Composites. I. Thermoanalytical and Mechanical Analysis", *Journal of Applied Polymer Science*, Vol. 79, 2001, pp125-133.
7. McMorow, B., Chartoff, R., Klosterman, D., "Processing and Characterization of a Carbon Nanofiber/Vinyl-Ester Resin Composite", *Proceedings of SAMPE 2003*, Long Beach, CA, May, 2003.
8. ASTM D5930, "Standard Test Method for Thermal Conductivity of Plastics by Means of a Transient Line-Source Technique" ASTM International.

## ACKNOWLEDGEMENT

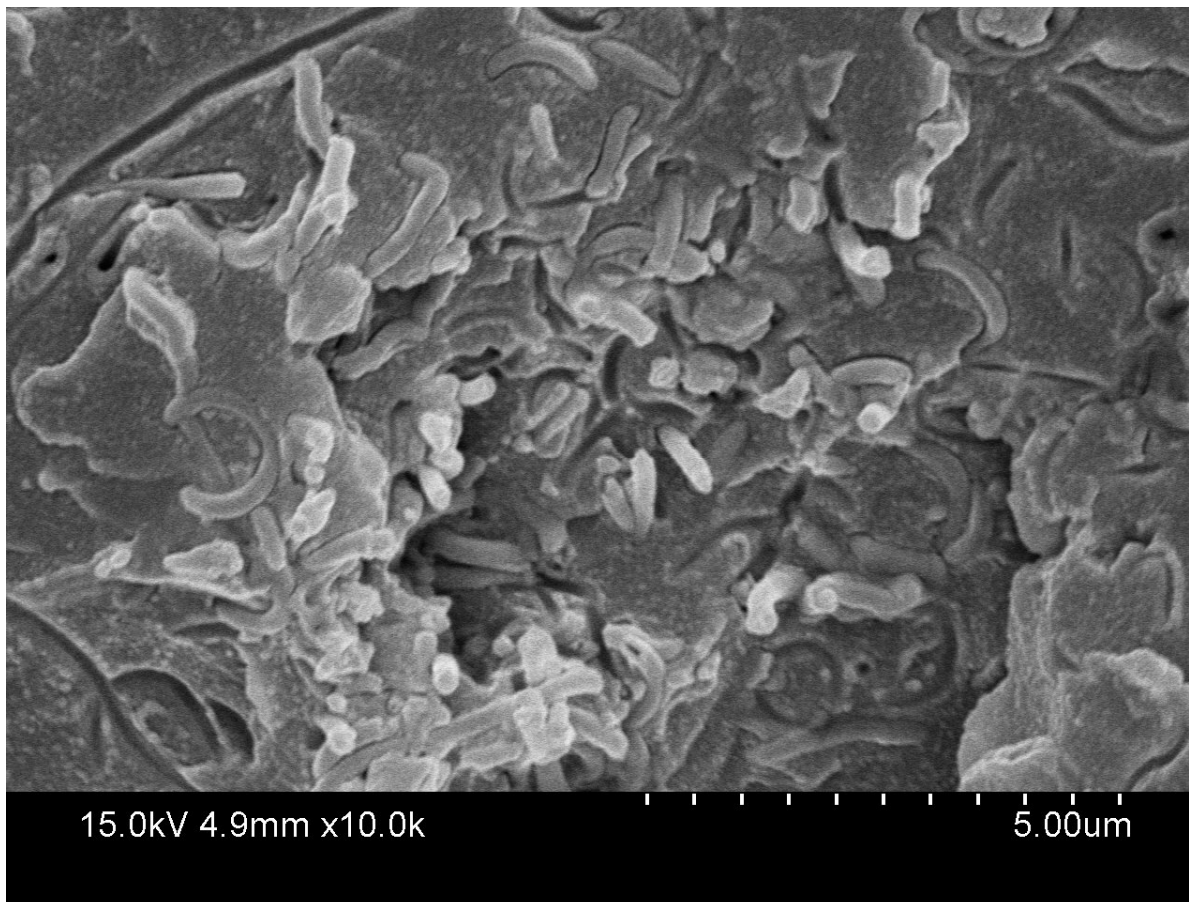
This testing was performed during Phase II of a Small Business Innovative Research effort under the guidance of the Air Force Research Lab contract number FA-8650-05-C-5047 at Cornerstone Research Group, Inc. in Dayton, OH.





*Cornerstone Research Group, Inc.*

# SMP Nanocomposite



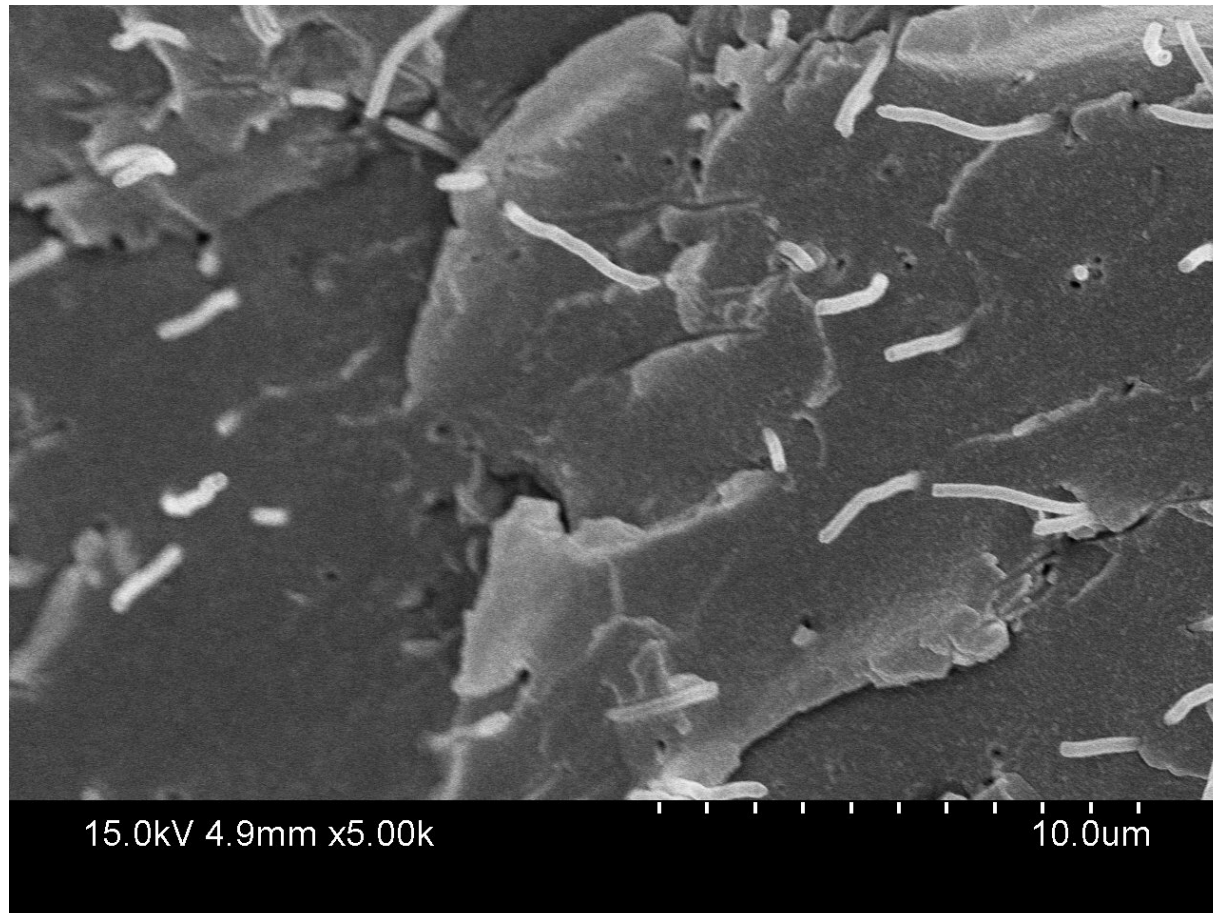
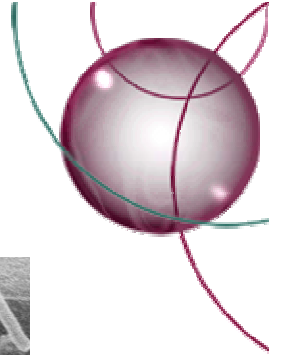
**Shape memory polymer composite with 3% wt. CNF  
using Veriflex™ resin at 10.0k magnification**

*...delivering value-added innovation...*



*Cornerstone Research Group, Inc.*

# SMP Nanocomposite



**Shape memory polymer composite with 3% wt. CNF  
using Veriflex™ resin at 5.00k magnification**

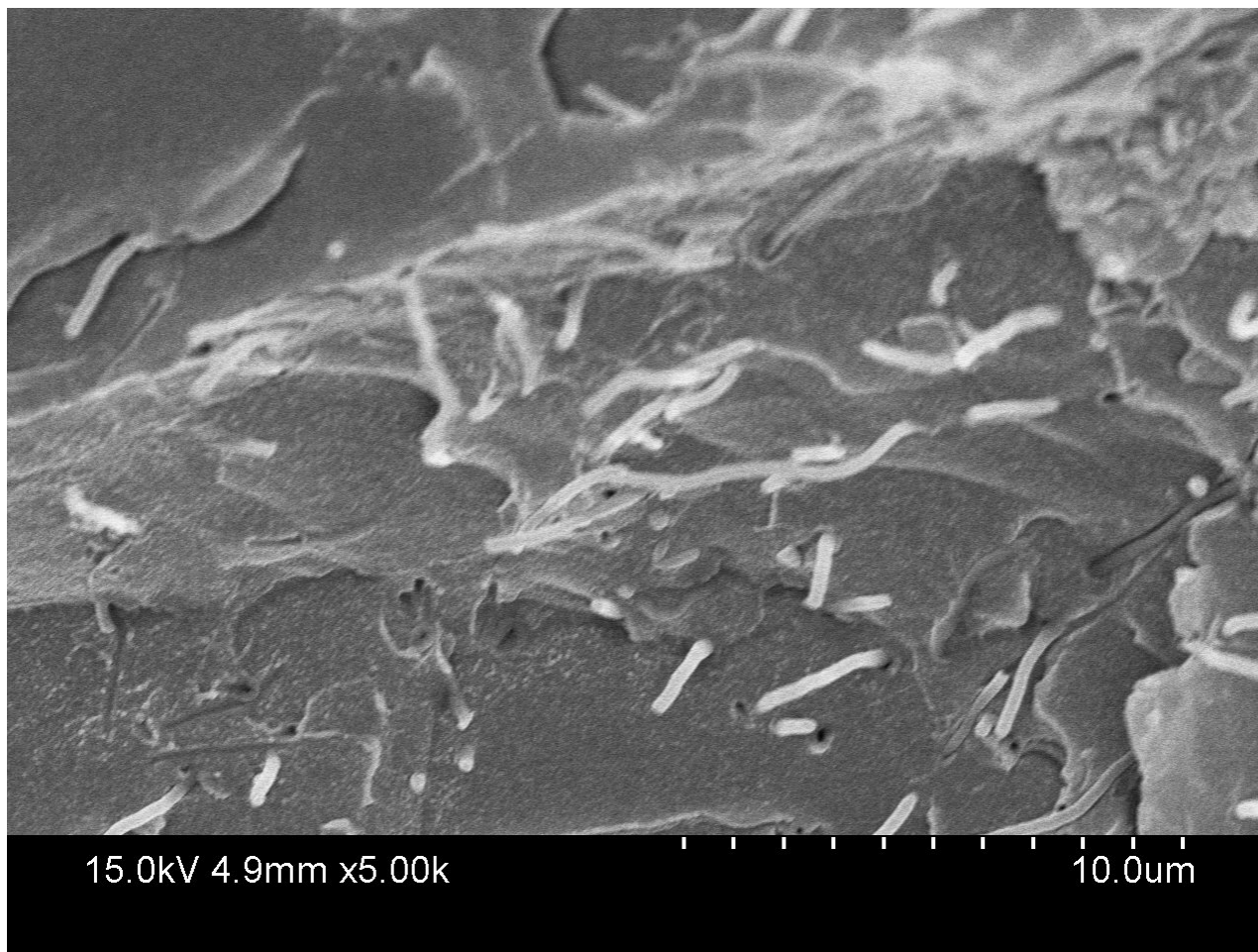
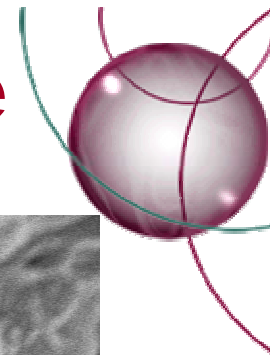
*...delivering value-added innovation...*





*Cornerstone Research Group, Inc.*

# SMP Nanocomposite



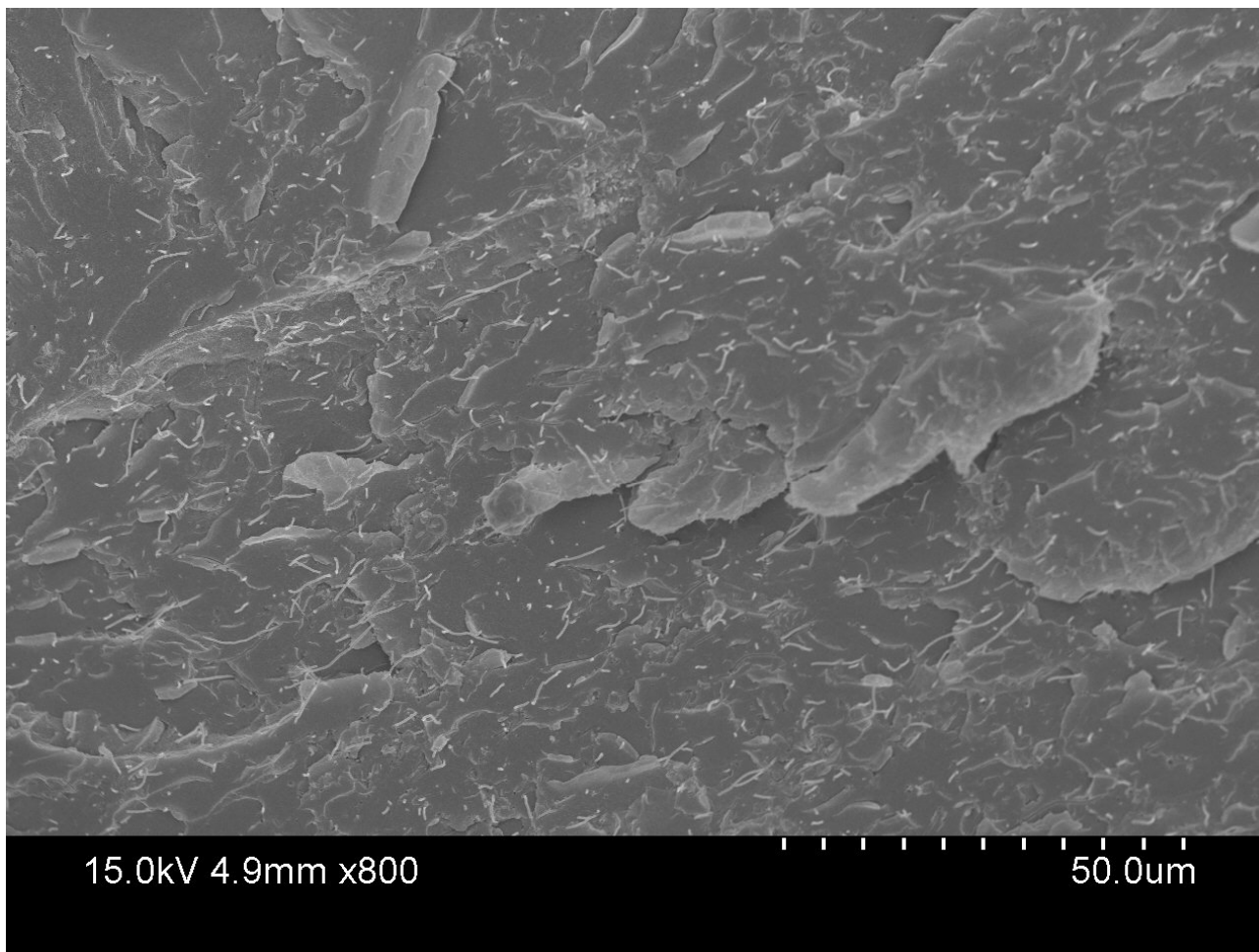
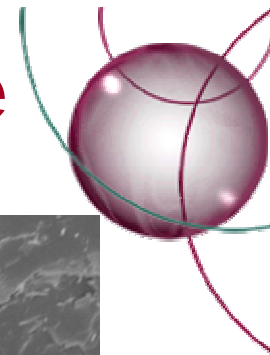
**Shape memory polymer composite with 3% wt. CNF  
using Veriflex™ resin at 5.00k magnification**

*...delivering value-added innovation...*



*Cornerstone Research Group, Inc.*

# SMP Nanocomposite



**Shape memory polymer composite with 3% wt. CNF  
using Veriflex™ resin at 800 magnification**

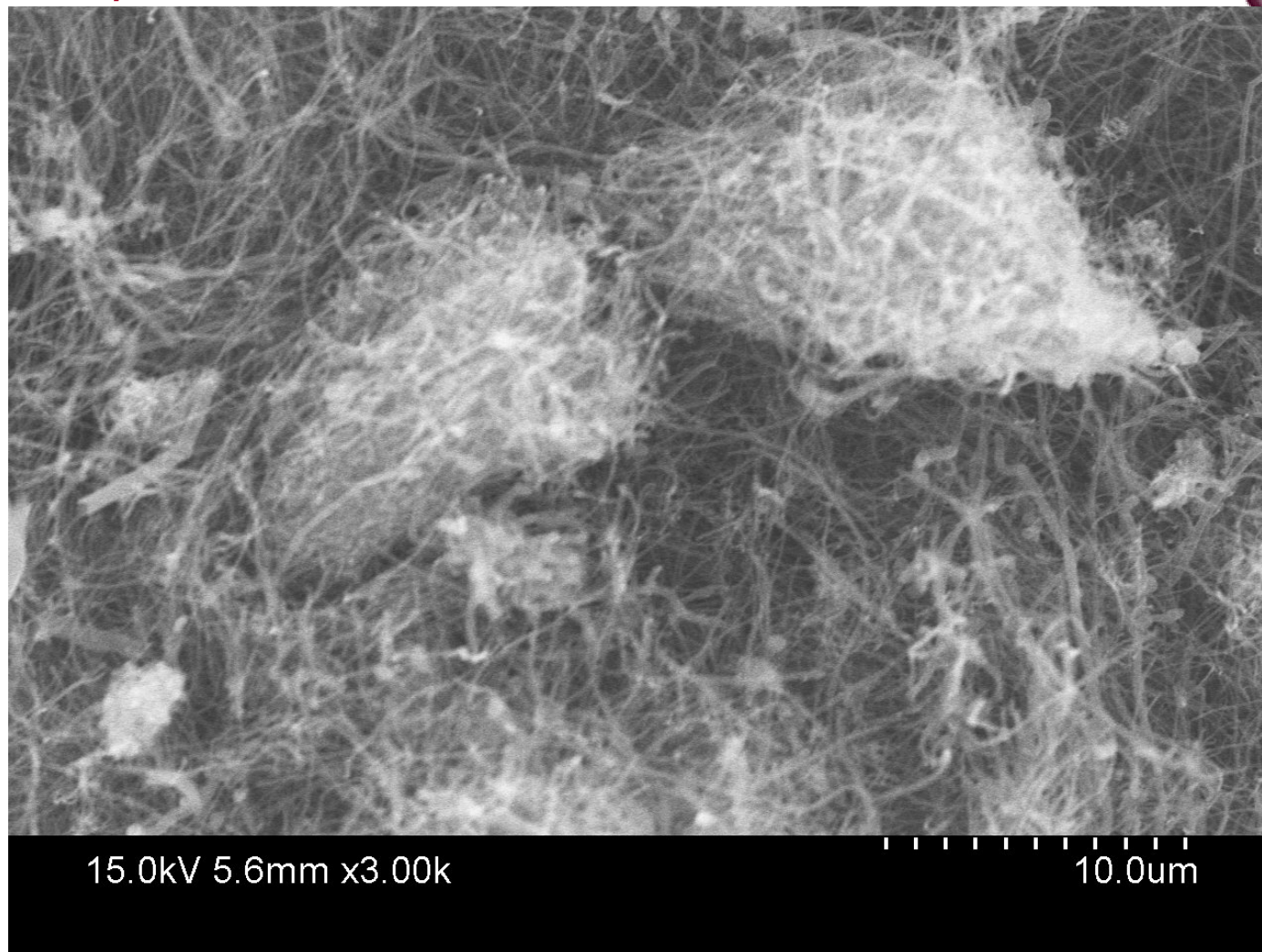
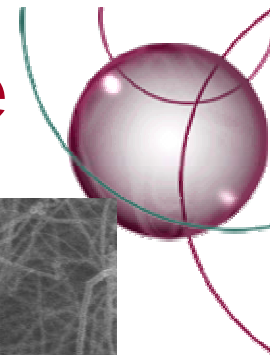
*...delivering value-added innovation...*





*Cornerstone Research Group, Inc.*

# SMP Nanocomposite



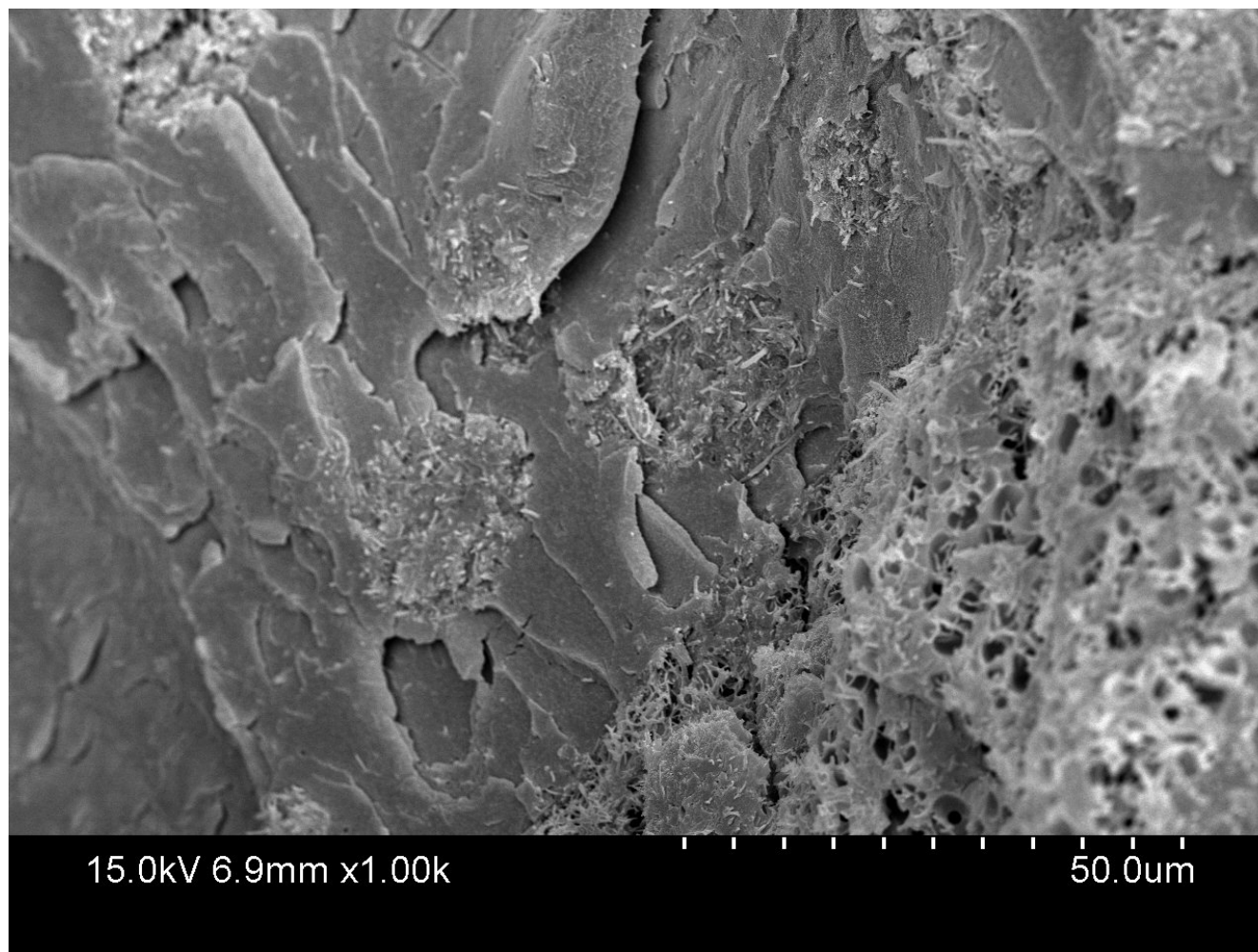
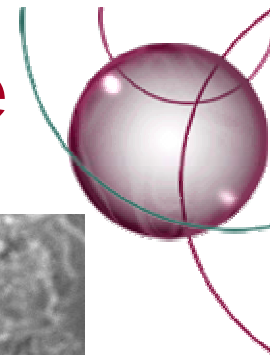
**Carbon nanofibers at 3.00k magnification**

*...delivering value-added innovation...*



*Cornerstone Research Group, Inc.*

# SMP Nanocomposite



**Shape memory polymer composite with 7% wt. CNF using Veriflex™ resin at 1.00k magnification. Shows agglomerations of CNF and poor dispersion.**

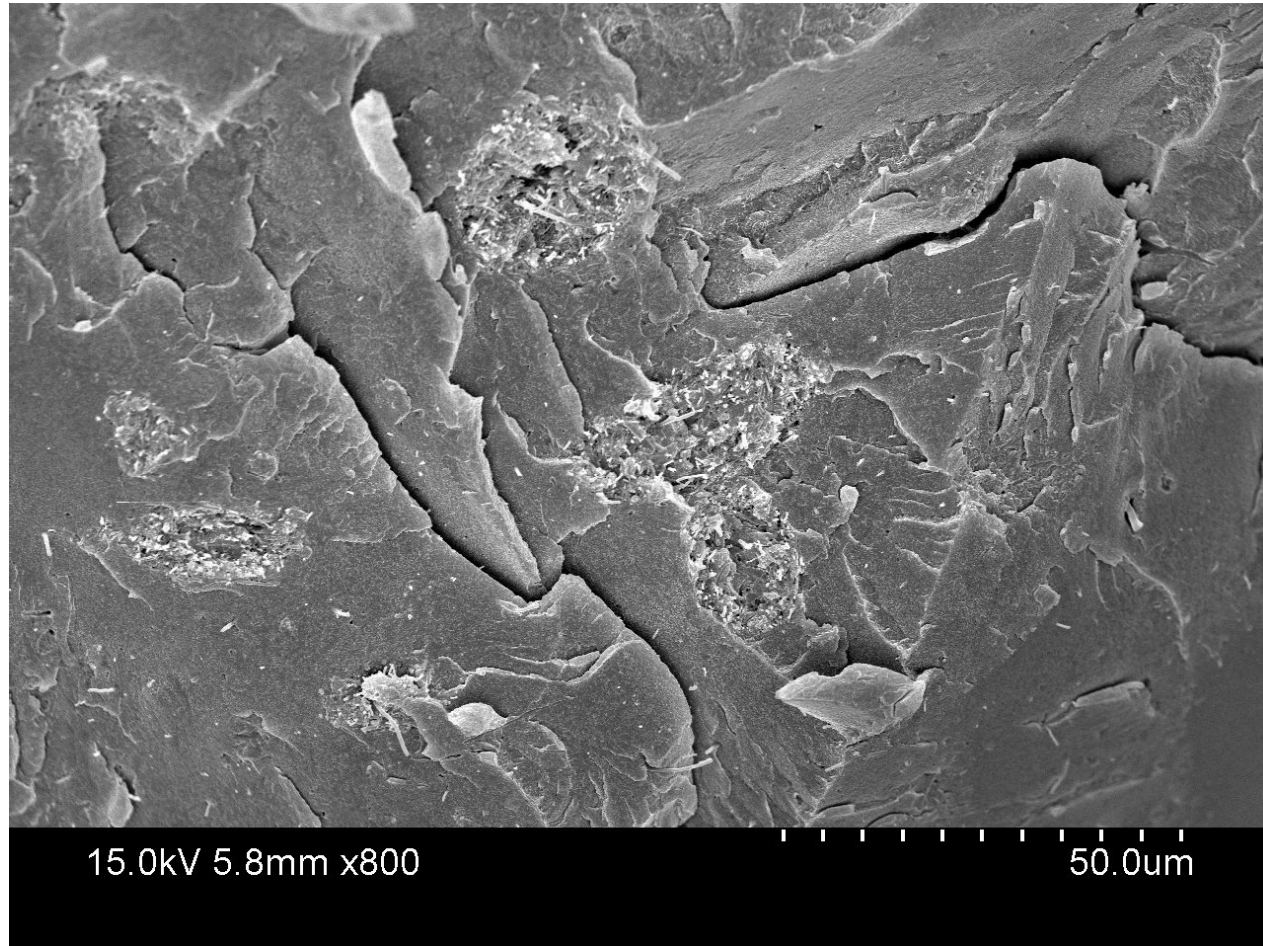
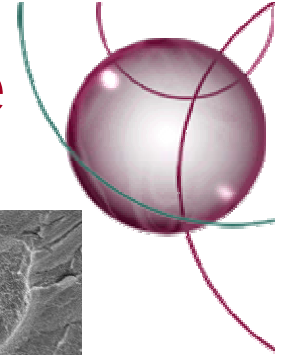
*...delivering value-added innovation...*





*Cornerstone Research Group, Inc.*

# SMP Nanocomposite



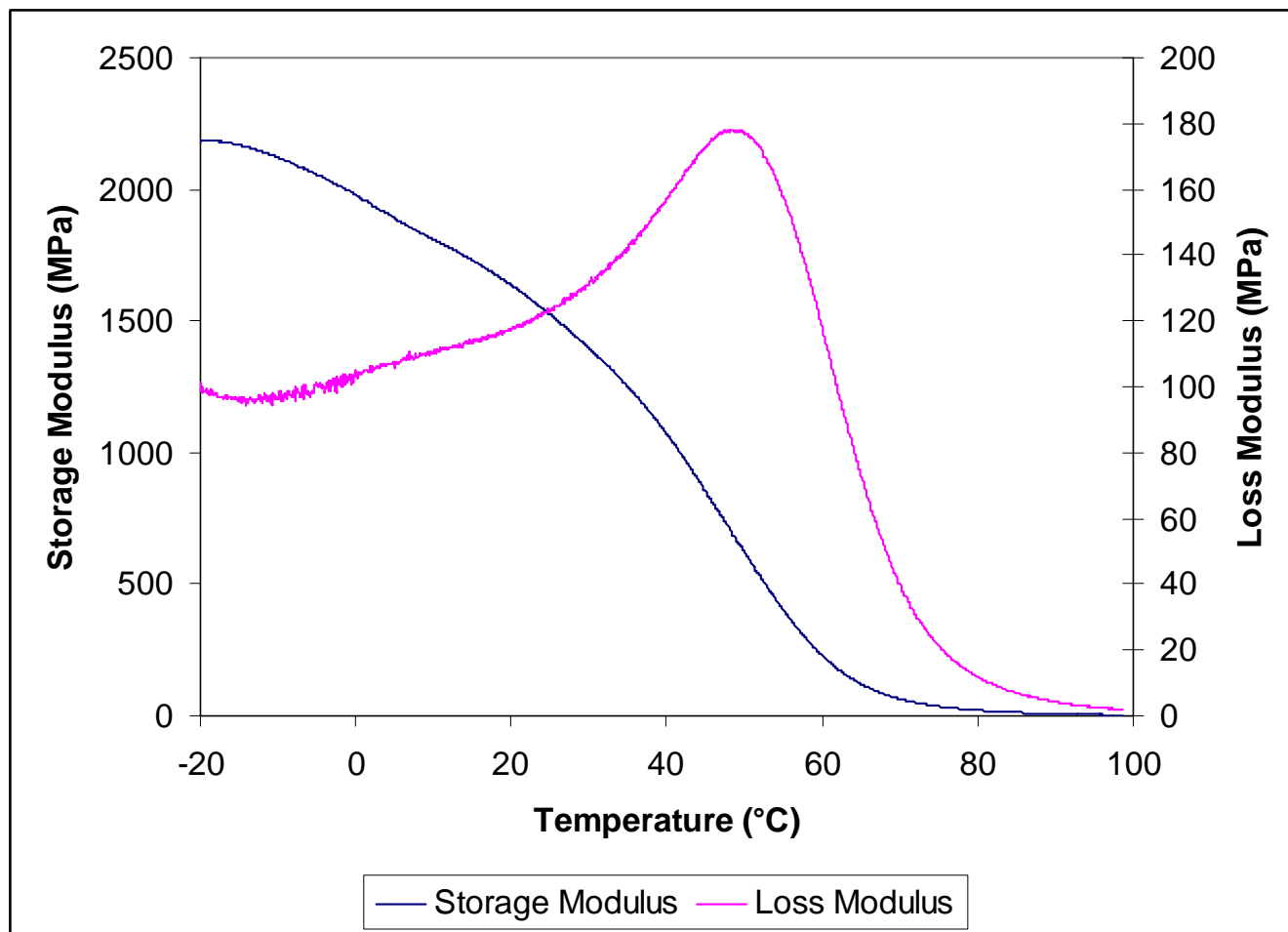
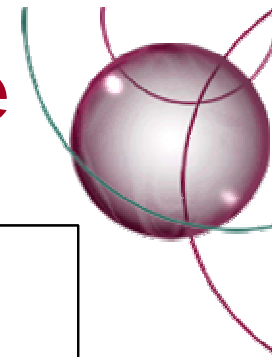
**Shape memory polymer composite with 7% wt. CNF  
using Veriflex™ resin at 800 magnification. Shows  
agglomerations of CNF and poor dispersion.**

*...delivering value-added innovation...*



Cornerstone Research Group, Inc.

# SMP Nanocomposite



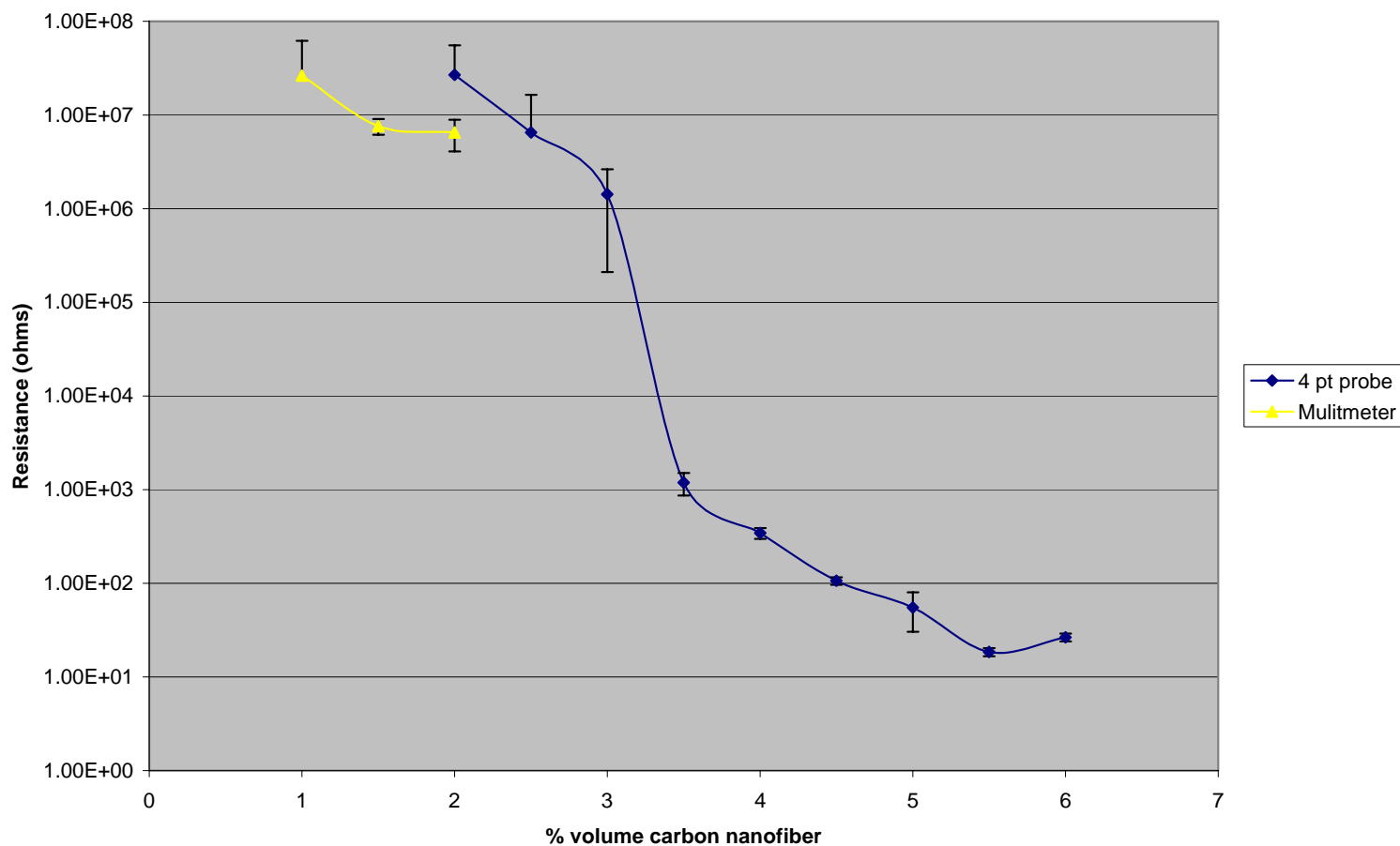
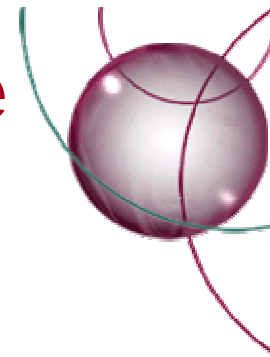
**Temperature versus storage modulus of shape memory polymer composite of Veriflex™ with 7% wt CNF**

*...delivering value-added innovation...*



Cornerstone Research Group, Inc.

# SMP Nanocomposite



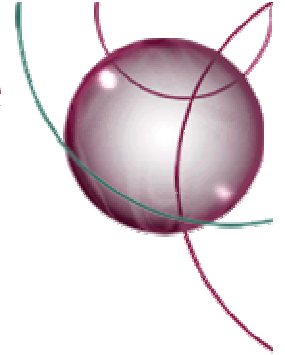
**Percolation curve for shape memory polymer nanocomposite.**

*...delivering value-added innovation...*



*Cornerstone Research Group, Inc.*

# SMP Nanocomposite



## Rheology

- Properties examined by rheology include deformation and flow.
- Viscosity can be explored as a function of shear stress applied on fluids.

## Rheological Properties of Carbon Nanofiber Resin

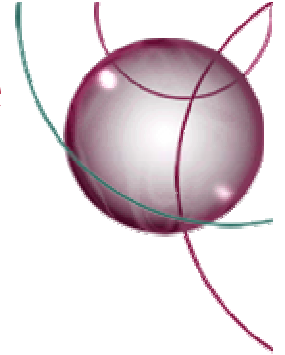
The level of nanofiber dispersion can affect the characteristics and conductivity of the host polymer drastically. Rheological properties were examined at various weight percent loadings under controlled testing procedures.

*...delivering value-added innovation...*



*Cornerstone Research Group, Inc.*

# SMP Nanocomposite



## Storage Modulus

The storage modulus ( $G'$ ) increases with respect to the percent loading of carbon nanofibers due to the increase in particle-particle interactions. These increased interactions can be related to the increase in conductivity of the host polymer.

The following slide exhibits the rheological properties of carbon nanofiber resin at increasing loadings from zero to four percent by weight. A dramatic increase in storage modulus is noted between one and two percent loadings with similar increase in modulus up to four percent loading.

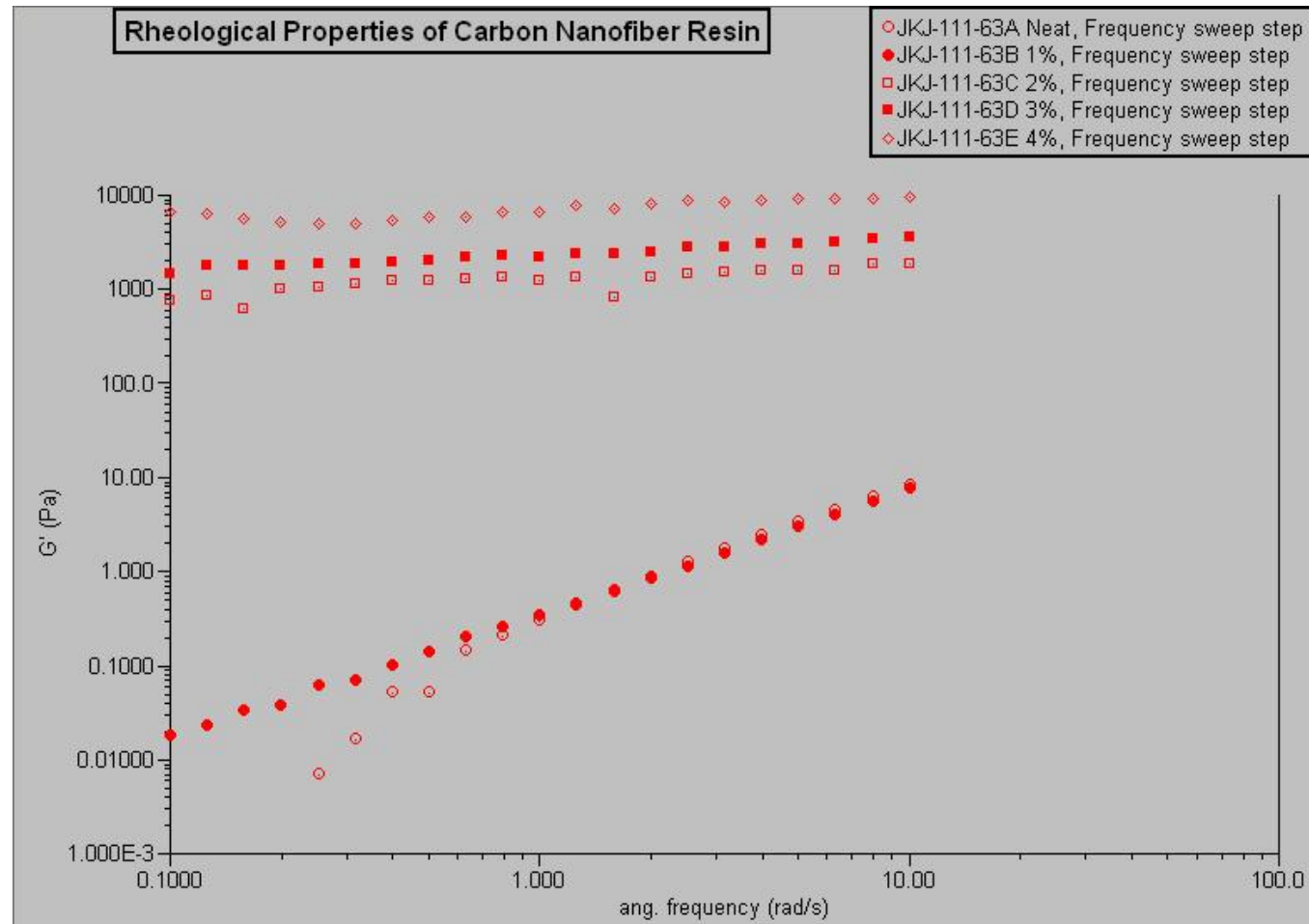
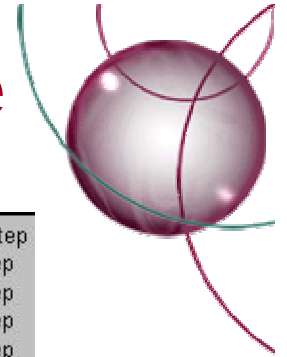
*...delivering value-added innovation...*





Cornerstone Research Group, Inc.

# SMP Nanocomposite



**Rheological properties of Veriflex™ nanocomposite resin defining the quality of dispersion of the resin system.**

*...delivering value-added innovation...*