

FOCUSING AND DESCRIPTION IN NATURAL LANGUAGE DIALOGUES

Technical Note 185

April 1979

By: Barbara J. Grosz  
Artificial Intelligence Center  
Computer Science and Technology Division

SRI Project 5844

Published in:

Elements of Discourse Understanding: Proc. of a  
Workshop on Computational Aspects of Linguistic  
Structure and Discourse Setting, A. K. Joshi,  
I. A. Sag, and B. L. Webber, eds. Cambridge  
University Press, Cambridge, England 1980.

# Report Documentation Page

Form Approved  
OMB No. 0704-0188

Public reporting burden for the collection of information is estimated to average 1 hour per response, including the time for reviewing instructions, searching existing data sources, gathering and maintaining the data needed, and completing and reviewing the collection of information. Send comments regarding this burden estimate or any other aspect of this collection of information, including suggestions for reducing this burden, to Washington Headquarters Services, Directorate for Information Operations and Reports, 1215 Jefferson Davis Highway, Suite 1204, Arlington VA 22202-4302. Respondents should be aware that notwithstanding any other provision of law, no person shall be subject to a penalty for failing to comply with a collection of information if it does not display a currently valid OMB control number.

1. REPORT DATE <b>APR 1979</b>		2. REPORT TYPE		3. DATES COVERED <b>00-04-1979 to 00-04-1979</b>	
4. TITLE AND SUBTITLE <b>Focusing and Description in Natural Language Dialogues</b>				5a. CONTRACT NUMBER	
				5b. GRANT NUMBER	
				5c. PROGRAM ELEMENT NUMBER	
6. AUTHOR(S)				5d. PROJECT NUMBER	
				5e. TASK NUMBER	
				5f. WORK UNIT NUMBER	
7. PERFORMING ORGANIZATION NAME(S) AND ADDRESS(ES) <b>SRI International,333 Ravenswood Avenue, Menlo Park, CA, 94025</b>				8. PERFORMING ORGANIZATION REPORT NUMBER	
9. SPONSORING/MONITORING AGENCY NAME(S) AND ADDRESS(ES)				10. SPONSOR/MONITOR'S ACRONYM(S)	
				11. SPONSOR/MONITOR'S REPORT NUMBER(S)	
12. DISTRIBUTION/AVAILABILITY STATEMENT <b>Approved for public release; distribution unlimited</b>					
13. SUPPLEMENTARY NOTES					
14. ABSTRACT					
15. SUBJECT TERMS					
16. SECURITY CLASSIFICATION OF:			17. LIMITATION OF ABSTRACT	18. NUMBER OF PAGES <b>34</b>	19a. NAME OF RESPONSIBLE PERSON
a. REPORT <b>unclassified</b>	b. ABSTRACT <b>unclassified</b>	c. THIS PAGE <b>unclassified</b>			

## ABSTRACT

When two people talk, they focus their attention on only a small portion of what each of them knows or believes. Both what is said and how it is interpreted depend on a shared understanding of this narrowing of attention to a small highlighted portion of what is known.

Focusing is an active process. As a dialogue progresses, the participants continually shift their focus and thus form an evolving context against which utterances are produced and understood. A speaker provides a hearer with clues of what to look at and how to look at it -- what to focus on, how to focus on it, and how wide or narrow the focusing should be. As a result, one of the effects of understanding an utterance is that the listener becomes focused on certain entities (both objects and relationships) from a particular perspective.

Focusing clues may be linguistic or they may come from knowledge about the relationships between entities in the domain. Linguistic clues may be either explicit, deriving directly from certain words, or implicit, deriving from sentential structure and from rhetorical relationships between sentences.

This paper examines the relationship between focusing and definite descriptions in dialogue and its implications for natural language processing systems. It describes focusing mechanisms based on domain-structure clues which have been included in a computer system and, from this perspective, indicates future research problems entailed in modeling the focusing process more generally.



## FOCUSING AND DESCRIPTION IN NATURAL LANGUAGE DIALOGUES\*

Barbara J. Grosz  
SRI International  
Menlo Park, California

### A. Introduction

When two people talk, they focus their attention on only a small portion of what each of them knows or believes. Some entities (objects or relationships) are central to the dialogue at a certain point and hence are focused on more sharply than others. More importantly, much of what each participant knows is not clearly in view at all; it is neither considered by the speaker in choosing what to say and how to say it, nor by the hearer in interpreting an utterance. Not only do speaker and hearer concentrate on particular entities, but they do so using particular perspectives on those entities. In choosing a particular set of words with which to describe an entity, a speaker indicates a perspective on that entity. The hearer is led, then, to see the entity more as one kind of thing than as another. For example, a single building may be viewed as an architectural wonder, a house, or a home, and a single event may be viewed at one time as a selling, another time as a buying, and still another as a trading.

Focusing is an active process.\*\* As a dialogue progresses, the participants shift their focus to new entities or to new perspectives on entities previously highlighted by the dialogue. Furthermore, an actor is involved in focusing (as the term is used in this paper). If an entity is in focus, it is the object of someone's focusing; it cannot be impersonally in focus. When I use the constructions "highlighted",

-----  
\* The work reported herein was supported by the National Science Foundation under Grant No. MCS 76-22004 and by the Advanced Research Projects Agency of the Department of Defense under Contract No. N00039-78-C-0060. I would like to thank Gary Hendrix, Jerry Hobbs, David Levy, Ann Robinson, Jane Robinson, Candy Sidner, and Brian Smith for discussing the ideas in this paper and commenting on various drafts of it.

\*\* This is the reason the verb "focusing" rather than the noun "focus" is used most often in this paper.

"focused on", or "in focus", there is always an implicit actor doing the highlighting or focusing. Finally, the entities that the speaker and hearer focus on are entities in their shared reality.\* Focusing, then, is the active process, engaged in by the participants in a dialogue, of concentrating attention on, or highlighting, a subset of their shared reality.

The relationship between language and focusing is two-way: what is said influences focusing; what is focused on influences what is said. The speaker provides clues for the hearer both to what s/he is currently focused on and to what s/he wants to focus on next. These clues may be linguistic or may derive from shared linguistic or nonlinguistic knowledge. The hearer depends on shared beliefs about what entities are highlighted to interpret such things as the appropriate sense of a particular word, and the object or event corresponding to a definite description. The link between the entities discussed in an utterance and the entities focused on when the utterance is spoken is thus an important aspect both of producing and of understanding that utterance.

The use and interpretation of definite descriptions in dialogue demonstrate the importance of focusing to dialogue participants.\*\* This paper examines the relationship between focusing and definite description and the implications of this relationship for computer systems for natural language processing. Section B presents an example that illustrates this relationship. Section C discusses definite descriptions from both the speaker's and the hearer's perspectives and presents problems that arise for both participants whose solutions are influenced by how the participants are focused. Section D describes some initial mechanisms that were used to incorporate focusing in a

-----  
\* This does not mean the entities must exist in the "real world". Even so, the statement is not quite correct. In Grosz and Hendrix (1978), we point out that the only kind of object an interpreter can focus on are structures in its memory. The perspective of an outside observer is required to relate these structures to entities in some real or hypothetical world.

\*\* Although we will concentrate on dialogue, much of what will be said carries over to other forms of discourse.

computer system constructed to participate in task-oriented dialogues. Section E addresses some problems that arise in computationally capturing the notion of focusing, and discusses other aspects of dialogue with which focusing mechanisms must be coordinated in a natural language processing system, in order to deal with the problems introduced in the preceding sections.

#### B. An Example

To begin, I want to examine a sample dialogue between two people, an expert and an apprentice, cooperating to complete a task. It illustrates several important aspects of the role of focusing in communication. The sample comes from a corpus of task-oriented dialogues collected in situations simulating direct interaction between a person and a computer (Grosz, 1977; Deutsch, 1974; Walker, 1978).<sup>\*</sup> The particular task being performed is disassembly of an air compressor.

- (1) E: First you have to remove the flywheel.
- (2) A: How do I remove the flywheel?
- (3) E: First, loosen the two allen head setscrews holding it to the shaft, then pull it off.
- (4) A: OK.
- (5) I can only find one screw. Where's the other one?
- (6) E: On the hub of the flywheel.
- (7) A: That's the one I found. Where's the other one?
- (8) E: About ninety degrees around the hub from the first one.
- (9) A: I don't understand. I can only find one. Oh wait, yes I think I was on the wrong wheel.
- (10) E: Show me what you are doing.
- (11) A: I was on the wrong wheel and I can find them both now.
- (12) The tool I have is awkward. Is there another tool that I could use instead?
- (13) E: Show me the tool you are using.
- (14) A: OK.
- (15) E: Are you sure you are using the right size key?
- (16) A: I'll try some others.
- (17) I found an angle I can get at it.

-----  
<sup>\*</sup> For most of these dialogues the expert and apprentice had only limited visual contact.

- (18) The two screws are loose, but I'm having trouble getting the wheel off.
- (19) E: Use the wheelpuller. Do you know how to use it?
- (20) A: No.
- (21) E: Do you know what it looks like?
- (22) A: Yes.
- (23) E: Show it to me please.
- (24) A: OK
- (25) E: Good. Loosen the screw in the center and place the jaws around the hub of the wheel, then tighten the screw onto the center of the shaft. The wheel should slide off.

First, consider the use of the phrase "the two screws" in (18) to refer to the two setscrews holding the pulley on its shaft and the use of the phrases "the screw in the center" and "the screw" in (25) to refer to a part of the wheelpuller.\* Since most objects do not have proper names, definite descriptions are a primary means of identifying objects. However, as in this dialogue, the same description may be used to identify different objects at different times. When (25) was uttered, the two screws mentioned in (3) through (18) were the most recently mentioned objects that could be referred to by a phrase such as "the screw", but they were no longer focused on by the dialogue participants -- they were no longer relevant to either the dialogue or the task -- and hence were not considered as possible referents for either "the screw in the center" or "the screw" in (25).

One can see in this example that the most recently mentioned object that satisfies a description may not be the object identified by that description. What entities a speaker and hearer are focused on influences both the kinds of descriptions they use and how their descriptions are interpreted. In utterance (3), the expert indicates that he is focused on, and concurrently gets the apprentice to focus on, the two subtasks involved in removing the pulley. In particular, the two allen-head setscrews involved in the first task are brought into

-----  
\* The modifying phrase "in the center" does not distinguish the main wheelpuller screw from the setscrews, but from other screws that are part of the wheelpuller.



focus; they continue to be in focus through the first part of (18). The initial clause of (18) indicates the completion of the task involving the screws and hence suggests that the apprentice will shift her attention to some new task (she might not -- she could still say something more about the screws). She does make such a shift in the second clause of (18) ("but I'm having trouble getting the wheel off"). In (19), the expert indicates that he has followed this shift (note that he might have asked a question about the screws -- e.g., "How loose are they?" -- and thereby continued to focus on them and the associated task) and narrows focusing from the task of removing the flywheel to a particular tool involved in that task. In this context, it is clear that the phrase "the screw" cannot refer to either of the setscrews, but must refer to something else.\*

This dialogue also indicates some of the ways in which focusing is manipulated in a dialogue. In particular, it illustrates how the structure of the entities being discussed (the 'domain') influences focusing and hence the structure of the discourse. The dialogue concerns the performance of a task; its topic is that task. As a result, the way in which the apprentice and expert focus, and hence the structure of the dialogue,\*\* are closely linked to the structure of the task. Information about the structure of entities in the domain provides one kind of clue to how focusing can change. What about general linguistic clues to focusing? What information in words themselves or in sentence structure can influence focusing? The use of

-----  
\* It is interesting that some people who are not familiar with the compressor or wheelpuller find this sequence confusing: (18) seems to end any concern with screws and hence (25) is unintelligible. One must know -- or infer -- that the wheelpuller has a screw for the statement to make sense.

\*\* The concept of structure used here is similar to that in Levy (1979), but different from that in work on story and text grammars (cf. van Dijk 1972; Rumelhart 1975). In particular, we are not interested in such things as generating or recognizing a valid dialogue (the analogy to sentence grammars), but rather in those dynamic aspects of intersentential relationships such as focusing that influence the interpretation and generation of utterances in a dialogue.

"but" in (18) illustrates one kind of linguistic clue to focus. The indication of contrast suggests a shifting of focus to the entities described in the clause following the "but". In fact, this shift does occur and the remainder of the fragment concerns things involved with "getting the wheel off".\*

The final point I want to make with respect to this fragment concerns the relationship between how the speaker and hearer are focused and how differences in focusing affect understanding. It is clearly crucial for speaker and hearer to be able to distinguish their own beliefs from each other's beliefs. What about focus? We are concerned here not with the consistent difference in focusing that results from the speaker being one step ahead of the hearer (closing this gap is one goal of an utterance), but rather with whether speaker and hearer purposely maintain differences in focusing over several interactions (as they do with beliefs). An analysis of the dialogues we collected indicates that, in most cases, whether or not a speaker and hearer are focused similarly, they speak as though they were. Speaker and hearer assume a common focus; they usually do not have distinct models of each other's focus. That is, the speaker assumes that the hearer, in understanding an utterance, has followed any shift in focus indicated by that utterance and is, to the extent it matters, focused on the entities the speaker intended (from the perspective the speaker intended). It is only when a difference in focusing results in some fairly major incompatibility that a problem is detected. The interchange in (5) through (11) illustrates what happens when the two participants in a dialogue believe erroneously that they are focused on the same entity. Initially, the apprentice is focused on the motor pulley, which she thinks is the flywheel. Because the expert is not aware of this (he probably doesn't even consider the possibility), his responses are not very helpful.

-----  
\* One of the open problems for incorporating focusing mechanisms in natural language processing systems that bears further investigation is identifying the different kinds of clues to focusing and how they interact. Some aspects of this problem are discussed in Section D.

### C. Descriptions

One of the key ways in which the influence of focusing on dialogue is manifest is in the definite descriptions used. There is a two-way interaction between definite descriptions and focusing: (1) what entities a speaker and hearer concentrate on (and from what perspectives) influences the manner in which they describe entities, and (2) how entities are described influences how the speaker and hearer continue to focus their attention. Two specific problems relating to descriptions are strongly influenced by focusing. From the speaker's perspective, there is the problem of what to include in a description. From the hearer's perspective, there is the problem of what to do when a description doesn't correspond to any known entity -- when it doesn't "match" anything.

#### 1. Generating Descriptions

Three factors that influence the production of a description are: (1) the information speaker and hearer share about the entity being described, (2) the perspectives they have on it, and (3) the use of redundancy. The following fragment of dialogue illustrates the first two of these factors.\*

E: OK. Now we need to attach the conduit to the motor. The conduit is the covering around the wires that you . . . were working with earlier. There is a small part . . . oh brother  
A: Now wait a s . . . the conduit is the cover to the wires?  
E: Yes and . . .  
A: Oh I see, there's a part that . . . a part that's supposed to go over it.  
E: Yes.  
A: I see . . . it looks just the right shape too. Ah hah! Yes.  
E: Wonderful, since I did not know how to describe the part.

-----  
\* This segment also illustrates the cooperative nature of task-oriented dialogues: the two participants work together to achieve a shared goal of identifying the object the expert wants the apprentice to locate.

The problem that arises here is that there is no simple shape-based description for the object the expert needs to identify, so he must find some other shared information on which to base his description (cf. Downing, 1977; Chafe, 1979). The problem is complicated because the expert and apprentice do not share a visual field. If they did, the expert could point (if they and the object being pointed at were all in the same location) or use relative location (e.g., "it's next to the red-handled screwdriver").\* The expert's solution in this case is to anchor the description on the basis of a past action the apprentice performed and then to describe the object functionally (i.e., to describe its function rather than its shape). Functional descriptions often enable bypassing other more complex descriptions. The statement "it is used for doing x" or "it has the right shape for doing x" may be used to communicate complex shapes and structures. As always, the success of such descriptions depends on the hearer's ability to determine what such an object is like, or to pick out the object from a set.

The fragment also illustrates the problems that arise when two participants in a dialogue have different perspectives on what is being described. The expert's orientation is basically functional; he has a model of what is going on, of how the compressor works, and of how it goes together. His descriptions are based on this model. The apprentice's orientation is basically visual or shape-based. He can see the parts and can tell by trying whether they fit. This discrepancy is even clearer in the following fragment, where from the functional perspective of the expert we get the descriptions "pump" and "cooling fins", while from the shape-based perspective of the apprentice, the same objects are described as "thing with flanges" and "little ribby things":

E: Remove the pump and the belt.

A: Is this thing with flanges on it the pump?

E: Point at "the thing with flanges on it" please.

\* Rubin (1978) describes spatial and temporal commonality between speaker and hearer as two dimensions along which language experiences may differ and considers how these dimensions affect the interpretation of deictic expressions.

A: I'm pointing at the thing with flanges on it.  
These little ribby things are flanges.

E: Yes, the thing you are pointing at is the  
pump. The little ribby things are cooling  
fins.

In this fragment, one can see the expert and apprentice working toward a shared view, trying to establish, or check that they have established, a common referent and hence a common focus.\* An implicit goal in a dialogue is to establish this commonality -- the effort this requires is very clear here. One of the ways in which misunderstandings arise is when the participants in a dialogue fail to establish this common ground but think they have (this happened with the flywheel and motor pulley in the initial dialogue fragment). Not only do such mismatches occur, they are difficult to detect and often go unnoticed until a fairly major problem arises.

A further problem that arises in producing a description is deciding how much information to include in it. The linguistic description of an object must distinguish it from all others currently focused on by the speaker and hearer.\*\* But the situation is more complicated than this. It is clear from an analysis of the task-oriented dialogues and from other data (Freedle, 1972) that the description of an object seldom contains only the minimal amount of

-----  
\* There is a clear indication at the end of the fragment concerning "the conduit" that the expert realizes the importance of shape in the apprentice's orientation: he says he didn't know how to describe the part, apparently meaning that he didn't have a description of its shape (he did describe it functionally and that seems to have worked very well).

\*\* Olson (1970) has shown that the description of an object changes depending on the surrounding objects from which it must be distinguished. For example, the same flat, round, white object was described as "the round one" when a flat, square object of similar size and material was present, but as "the white one" when a similarly shaped but black object was present. The importance of contrast for distinguishing objects is well established in vision research (e.g., Gregory, 1966). Comparison of differences has also played a crucial role in computer programs that reason analogically (Evans, 1963; similar strategies are used in Winston, 1970).

information necessary to distinguish it. Descriptions, like the rest of language, are often redundant.\* What appears to be the case for physical objects is that the speaker describes an object not in the minimum number of 'bits' of information, but rather in a manner that will enable the hearer to locate the object as quickly as possible. Clear distinguishing features (e.g., color, size, and shape) are part of a description precisely because they eliminate large numbers of wrong objects and hence help the hearer to isolate the correct object more quickly.

The use of redundant information (and not just distinguishing information) to speed up the search for a referent can be seen easily from an example. If someone asks "What tool should I use?" the response "The red-handled one." may not be satisfactory even if there is only one red-handled tool, because processing such a description requires considering too many alternatives. The phrase "the red-handled screwdriver" is more helpful, because it limits the search to screwdrivers. In giving a description that minimizes the time it takes the hearer to identify the referent of a referring expression, a balance must be reached. Too much information is as harmful as too little, since all parts of the description must be processed to make sure the object is the correct one. Furthermore, the hearer may wonder whether he is mistaken if he thinks he has determined the referent but there is more description to process (cf. Grice, 1975). Using the phrase, "the red-handled screwdriver with the small chip on the bottom and a loose handle" to identify the only red-handled screwdriver will probably both increase the hearer's search time and confuse him. Rather than minimize either the communication time (including processing of the description) or the search time alone, the combination of communication time and search time must be minimized. A speaker should be redundant only to the degree that redundancy reduces the total time involved in identifying the referent.

-----  
\* Olson, 1970, p.266, comments on this phenomenon and on the need for further investigation of it.

## 2. Matching a Description

As the preceding discussion illustrates, a major role of descriptions is to point; the speaker is directing the hearer's attention to some entity. For the hearer, focusing is crucial in providing a small set of items from which to choose that entity. Being able to so restrict attention is necessary both for identifying the correct referent (as the interpretation of the phrase "the screw" in the initial dialogue fragment illustrates) and constraining search time (see Grosz, 1977).

One problem that arises for a hearer, especially a computer system in the role of hearer, is what to do when a reference does not correspond to (or match) any known entity.\* If the description suffices to distinguish the entity being pointed at from others that are currently focused on, then the mismatch does not matter. But, what does "suffice to distinguish" mean? The question of what kind of mismatch is significant depends on more than the entities in focus. For example, the difference between yellow and green may not matter when a yellow-green shirt is being distinguished from a red one; it does matter when picking lemons.

In addition, the hearer must decide whether or not an inexact match should even be considered. In the usual use of definite descriptions, to identify some entity in the domain of discourse, inexact matches are always acceptable. Donellan (1966) distinguishes this referential use from an attributive use for which an inexact match is not possible: "In the attributive use, the attribute of being the so-and-so is all important, while it is not in the referential use" (p.102). But the distinction in the terms that Donnellan makes it poses a problem for a hearer, since it is the speaker's intent and not

-----  
\* Grosz and Hendrix (1978) examine the question of matching in a more coherent framework. In particular the notions of processor-dependent interpretation and processor state are used to explain how an expression can refer (in the standard sense) to different entities for a speaker and hearer.

the speaker's beliefs\* that distinguishes attributive from referential uses of a description. This means that the hearer (whether a person or a computer system) must be able to detect this intent. In certain cases (for example, descriptions of entities that do not yet exist), the attributive use is usually clear. In using the phrase, "the winner of the 1980 Nobel Peace Prize", a speaker is describing a person whose identity is not yet known; there is no other way to describe that person (yet).\*\* There are other instances in which the distinction relies on knowledge outside the dialogue in which the reference occurs (in particular, what the hearer believes the speaker wants). It seems that for this problem the dialogue participants must rely on the potential for clarification available in further dialogue. If a hearer misinterprets an attributive use of a description, the speaker can explicitly indicate the need for an exact match.\*\*\*

To summarize, the importance of focusing to both the interpretation and the generation of definite descriptions comes from the highlighting function it serves. By separating those items currently highlighted from those that are not, focusing provides a boundary around the entities from which the entity being either described or identified must be distinguished. For generation purposes, this boundary circumscribes those items from which the entity being described must be distinguished, and thus provides some means of determining when a description is sufficiently complete. This boundary is useful for interpretation in providing a small set of items from

-----

\* "A definite description can be used attributively even when the speaker believes that some particular person fits the description, and it can be used referentially in the absence of this belief."(p.111)

\*\* There is, of course, the possibility that the speaker meant to say 1977, in which case s/he is referring (wrongly) to an existing entity, but then we are back with the referential case.

\*\*\* We have ignored a third issue that arises when considering a computer system for natural language processing: the formalism used for encoding knowledge in the system must be adequate for handling attributive descriptions. For a discussion of this issue, see Cohen, 1978 and Webber, 1978.



which to choose. If an exact match cannot be found in focus, it is reasonable to ask if any of the items in focus comes close to matching the definite description and, if so, which is the closest.

#### D. A Focus Representation

We turn now to the question of how to integrate mechanisms for focusing into a computer system, in particular into a language processing system. Suppose the system has a knowledge base which encodes the portion of the world the system knows about, and that this knowledge base contains formal elements which stand for entities in that world. Then the system needs a means of highlighting those elements in its knowledge base that correspond to the entities currently focused on and must be able both to use this highlighting (for example, to interpret and generate descriptions) and to change it appropriately as the dialogue progresses.\* In this section I will describe focusing mechanisms that were incorporated in a computer system constructed to participate in task-oriented dialogues. The representations described in this section are used by the procedures that determine the referents of definite noun phrases.\*\* Some of the limitations of these mechanisms will be discussed in Section E.

A key characteristic of the focusing mechanisms I will describe is that they segment the knowledge base of the system into subunits. Each subunit, called a focus space, contains those items that are focused on by the participants in the dialogue during a particular part of the dialogue. This segmentation is structured by ordering the spaces in a hierarchy that corresponds to the structure of the dialogue. To illustrate the focusing mechanisms, I will consider how they are used for interpreting the phrases "the screws", "the screw in the center", and "the screw" in the initial dialogue fragment.

-----  
\* In addition, during retrieval and deduction operations, this highlighting enables the system to access more important information first. Grosz (1977) describes this aspect of focusing in relation to identifying the referents of definite noun phrases.

\*\* Robinson, 1978 contains a description of the system and a sample of the kind of dialogue it can currently handle.

Figure 1 illustrates a piece of the encoding of the knowledge about the task and objects being discussed in this dialogue fragment.\* There is a particular air compressor, AIRCOMPRESSOR1, which has as one of its parts a pump, PUMP1, which in turn has as one of its parts a flywheel, FLYWHEEL1. (The arcs labelled h.a.p are a shorthand for the representation of these has-as-part relationships.) The arc labelled e from PUMP1 to PUMPS indicates that PUMP1 is an element of PUMPS (as is PUMP2, a part of some bicycle, BICYCLE1). In addition, there is a removal operation, A.REMOVAL1, which involves PUMP1 and has an event-part (indicated by the arc labelled e.p), a taking-off operation A.TAKEOFF1. This taking off operation has an event-part A.LOOSEN1 that involves two quarter-inch setscrews, SETSCREWS1, a subset of the set of all SCREWS.

Consider the situation just before (18) is uttered. The loosening of the setscrews is the primary focus of the dialogue at this point. It is viewed here as part of taking off the flywheel, which in turn is focused on as part of the pump removal. Figure 2 shows the network of Figure 1 partitioned to reflect this focusing. The nodes and arcs of the network have been separated into spaces. Space FS1 highlights removing the pump, space FS2 taking off the flywheel, and space FS3 loosening the screws. The heavy arrows between spaces indicate the hierarchy of focus. Space FS3 is the primary focus at this point in the dialogue. As long as this is the focusing situation, the phrase "the screws" will be taken to refer to SETSCREWS1, the two setscrews involved in the loosening operation. When the apprentice indicates that this operation is complete [in (18)], the potential for closing space FS3 arises. If this were to happen, as it indeed does in this dialogue fragment, focus would shift back to space FS2. Notice that once space

-----  
 \* To avoid complicating the figures and the description, I have used a simplified network notation. The actual network representation used for implementing and testing the focus mechanisms described here is presented in Hendrix, 1978. Among the things glossed over are the actual representation of individual instances. Also, time information has been left out. A more detailed presentation of the initial use of partitioned networks for encoding focusing can be found in Grosz, 1977 and Walker et al., 1978.

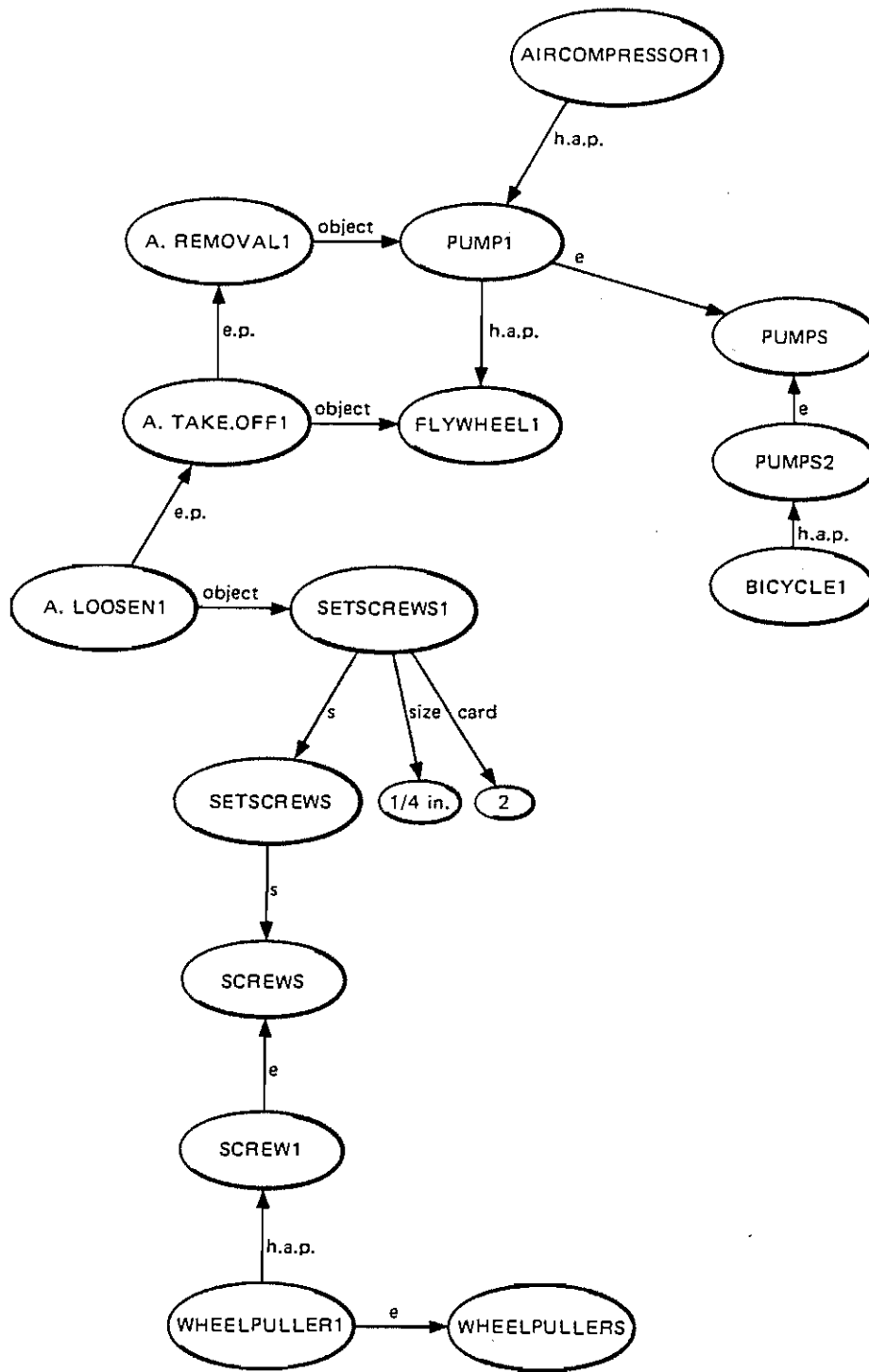


FIGURE 1 PARTIAL ENCODING OF DOMAIN KNOWLEDGE

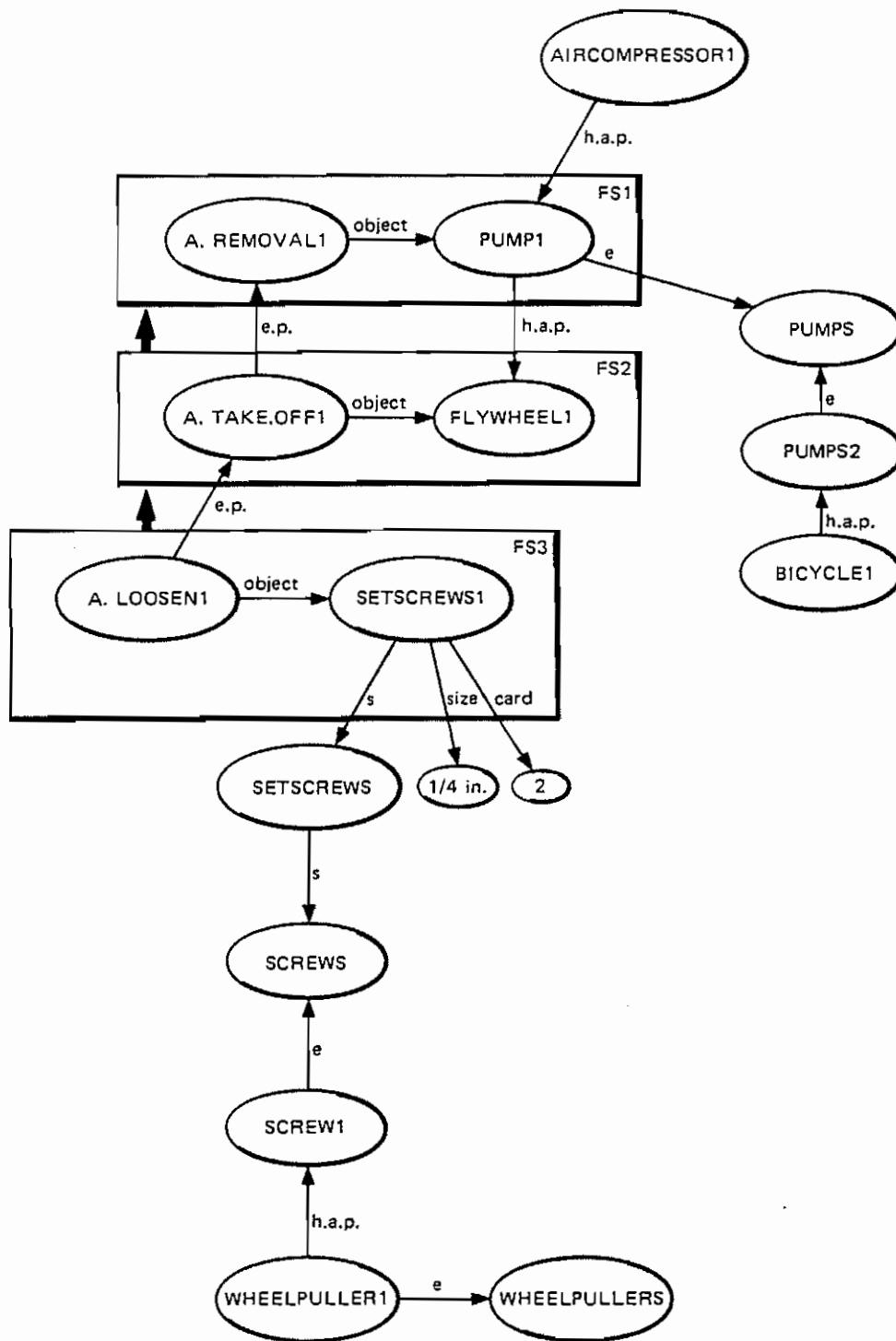


FIGURE 2 PARTITIONING THE ENCODING TO REFLECT FOCUSING

FS3 is closed, SETSCREWS1 are no longer in focus. In particular, they are no longer considered candidates as referents for definite noun phrases. This situation could change of course -- a reference to the loosening operation (e.g., "when I was loosening the setscrews") would reopen space FS3; discussion of another operation involving the setscrews would bring them back into focus in another focus space.

The interpretation of utterances (19)-(25) requires expanding the fragment of encoded knowledge to include some task (or process) information. Figure 3 shows in shorthand some of the information needed to understand the subtasks that participate in the task of removing the flywheel. The double arrows indicate the succession of task steps.\* The dashed line between A.TAKE.OFF1 and the space labelled PLOT1 indicates an indirect pointer from the taking-off task to its subtasks and the objects involved in those subtasks. In particular, we can see that the task breaks down into two subtasks, a loosening (A.LOOSEN) and a removal operation involving a tool (A.REMOVE.WITH.TOOL), and that the removal operation uses a wheelpuller as its tool. This information is recorded on a separate space to indicate that it is only a template.\*\* The node A.LOOSEN1 is an instantiation of the template subtask A.LOOSEN. The instantiation is made when the real task of loosening the setscrews [mentioned in utterances (3)-(18)] is performed.

This encoding of task information also plays a role in shifting focus. In addition to highlighting those items explicitly focused on by the dialogue participants by placing them on focus spaces, the focusing mechanisms differentially access certain information associated with these items. In particular, the subactions and objects involved in a task are implicitly focused on whenever that task is focused on. In this case, the dashed line to the space PLOT1 indicates certain entities implicitly focused on by the taking-off operation.

\* Additional information includes the effects and preconditions of the operation. The actual representation also accounts for partial ordering in the task steps (see Hendrix, 1975; Sacerdoti, 1977; Robinson, 1978).

\*\* This is part of the partitioning that Hendrix (1978) uses for quantification.

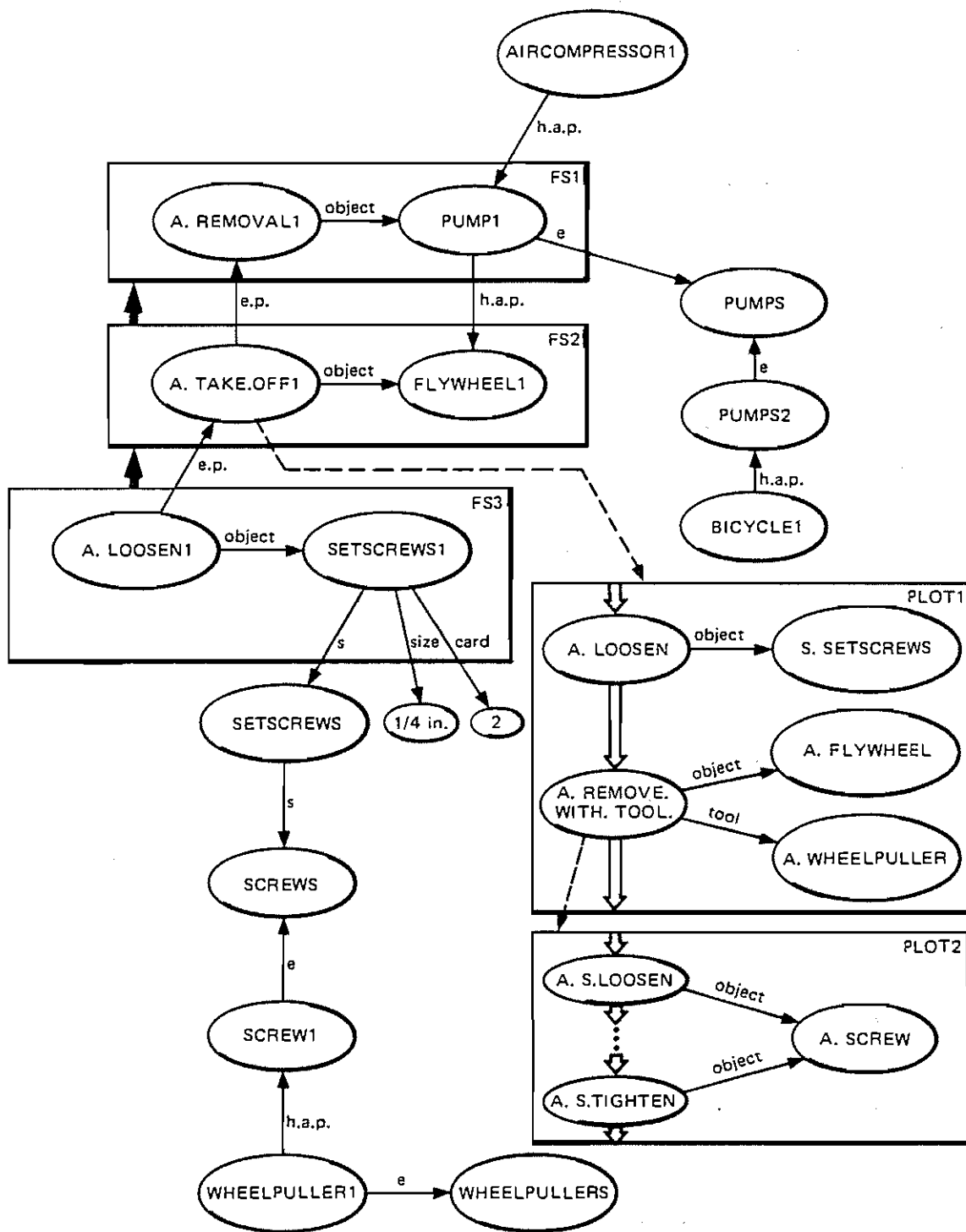


FIGURE 3 IMPLICIT FOCUS

Concepts that are implicitly focused on are separated from those that are explicitly focused on (i.e., they are not added to focus spaces) for two reasons. First, there are numerous implicitly focused entities, many of which are never referred to in a dialogue. Including such entities in focus spaces would clutter them, weakening their highlighting function. Second, references to implicitly focused items may indicate a shift of focus to those items, making it useful to distinguish those references from others.

Utterance (18) results in focusing on the task following A.LOOSEN1, in this case the removal operation involving a wheelpuller. The dashed line from A.REMOVE.WITH.TOOL to PLOT2 indicates which entities are implicitly focused by the mention of the use of the wheelpuller. It is in this context that the definite noun phrases in (25) are resolved. The indirect pointer from A.REMOVE.WITH.TOOL is followed, and the screw A.SCREW is found as a possible referent for "the screw in the center". Two things remain to be done. First, a check must be made to see that A.SCREW satisfies this description. Second, a real screw corresponding to A.SCREW must be identified. Once this is done, we have the situation of Figure 4, where instantiations of the information in the plot spaces of Figure 3 have been made and the 'real' wheelpuller screw SCREW1 is in explicit focus.

#### E. Focus in Discourse: Prospects and Problems

The preceding section described focusing mechanisms incorporated in a computer system for task-oriented dialogues. These include structures for highlighting elements of a knowledge base, operations on those structures, procedures that use them for interpreting definite noun phrases, and procedures for updating them. The implementation provides or two kinds of highlighting, explicit and implicit, and uses task information to determine shifts in focus. An explicit focus data structure contains those elements that are relevant to the interpretation of an utterance because they have been discussed in the preceding discourse. In addition, the focusing mechanisms provide for

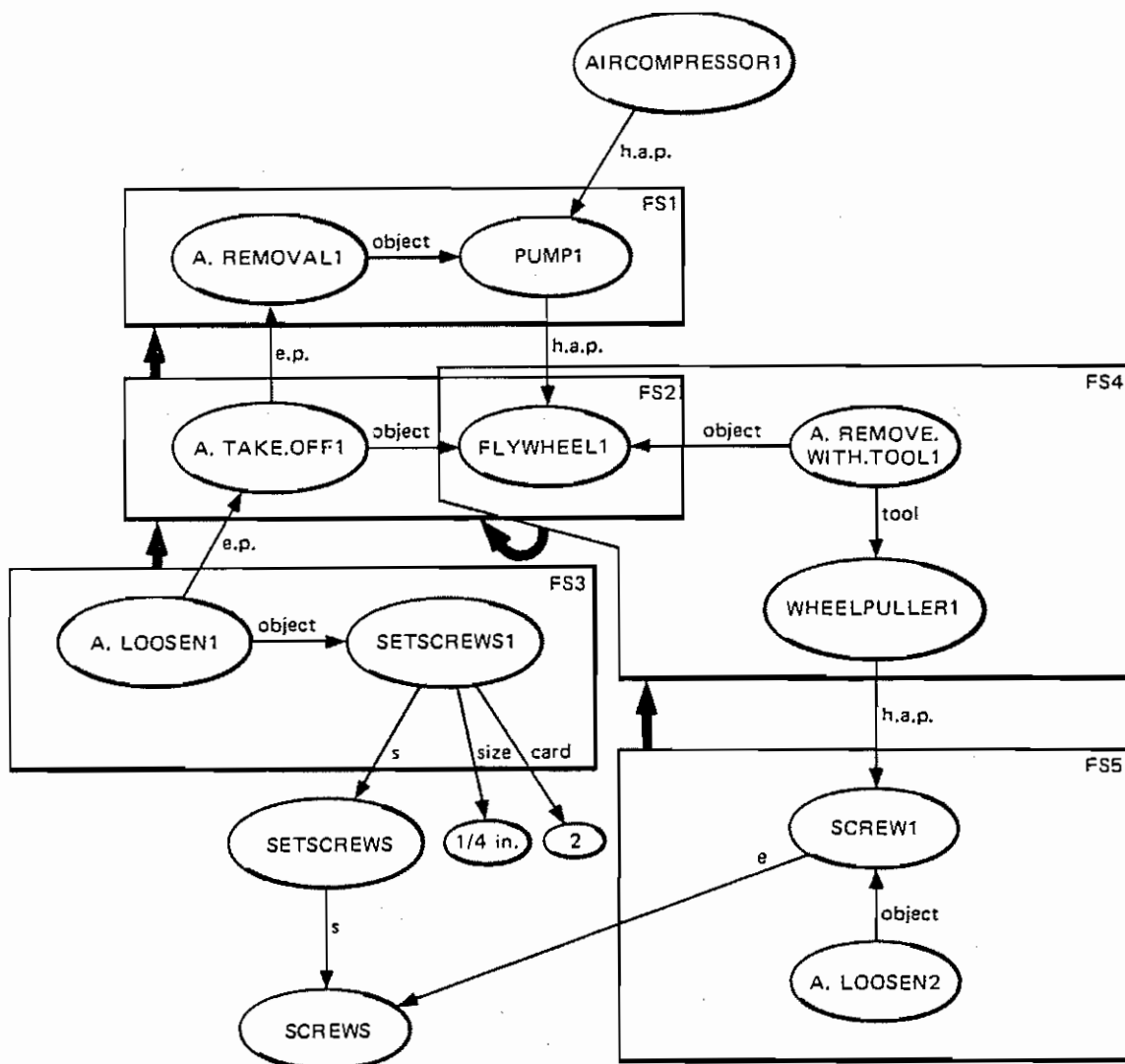


FIGURE 4 UPDATED FOCUS PARTITIONING



differential access to certain information associated with these elements. In particular, the subactions and objects involved in a task are implicitly highlighted whenever that task is highlighted. That is, implicit focus consists of those elements that are relevant to the interpretation of an utterance because they are closely connected to task-related elements in explicit focus.

There are several directions in which these mechanisms must be extended for a system to be able to deal with the general problems posed by focusing and definite descriptions in dialogue. First, the only clues to changes in focusing that are used by the system are clues based on shared knowledge about the structure of entities in the domain (in particular, the structure of the task). Linguistic clues and the interaction between different kinds of clues remain to be examined. Second, the highlighting of explicit focus and implicit focus are used in interpreting definite descriptions, but an exact match is required; the question of what constitutes an inexact match has not yet been faced. Third, although the highlighting structures provide for focusing on different aspects of an entity, the deduction routines do not use this information in accessing information about an entity in focus. Finally, the question of how the focusing mechanisms interact with representations of belief has not been addressed. The following sections examine the problems posed by each of these extensions in more detail.

#### 1. Ranges of Focusing and Clues to Shifts in Focus

The term focus (as well as theme) is sometimes used (e.g., Halliday, 1967) to refer to prominence in a sentence, a more local phenomenon than focus as discussed here. It is clear that a speaker and hearer are focused not only globally on some set of entities but also more locally, and that this more local focusing affects the way in which a particular idea is expressed in an utterance. This raises the question of how sentential focusing interacts with the more global focusing discussed in this paper. When does the way in which an

utterance is phrased not only highlight certain entities, but also change the global focusing of the dialogue participants? An answer to this question requires looking more closely at what kinds of clues a speaker can use to shift focus.\*

A speaker's clues on how to focus may be linguistic or may come from knowledge about the relationships among entities being discussed. Linguistic clues may be either explicit, given directly by certain words, or implicit, deriving from sentential structure or from rhetorical relationships between sentences. In the model described in Grosz (1977), both implicit focus and the procedures for shifting focus are based on clues that derive from knowledge a speaker and hearer share about the structure of the entities being discussed; they use a representation of the task to decide when and how to shift focus.\*\* For the focusing mechanisms to be useful for discourse in general, they must be extended to take care of the linguistic clues that a speaker may use. In particular, two kinds of implicit linguistic clues must be understood and their use for shifting formalized.

First, there are the global linguistic clues that come from patterns of relationships between sentences, such as paraphrase and elaboration (Grimes, 1975; Halliday and Hasan, 1976). For example, by elaborating on some element of a sentence, a speaker shifts focus to that element (really the entity expressed by that element). A major question here is how to recognize when such patterns occur (cf. Hobbs 1976). Perhaps more important, there is the question of whether recognizing the patterns requires knowing how the focus of attention in

-----  
\* It is important to note that shifting and focusing are not separable tasks. Focusing is an ongoing process that both influences and is influenced by the interpretation of an utterance. This dynamic aspect of focusing is clear in the interpretation of the phrase "one screw" in utterance (5) of the initial dialogue fragment. The focusing established by the expert in utterance (3) highlights a set of screws from which the one screw can be chosen. The reference to one screw shifts focus to the particular subtask of loosening those screws.

\*\* The structure need not be that of a task. For example, in describing a house, focus can move from the total house to one of the rooms of the house.

the two sentences is related. It may be that such global patterns are more useful in setting expectations about where focus may be in the succeeding utterances than in determining the focus in any particular utterance.

The second kind of implicit clue comes from the syntactic form of an utterance. Sidner (1979) presents rules for determining focus, based on thematic relations and syntactic structure. A particularly important aspect of her work involves the recognition that focusing is only predicted by a single utterance and that the "potential focus" must be confirmed by succeeding utterances. That is, the question of whether an utterance changes global focus cannot be answered on the basis of the individual utterance. Rather, an utterance can only suggest a global shift in focus. This expectation may then be confirmed in a following -- utterance if the speaker continues. If the hearer speaks next s/he may choose to accept or reject this shift.

## 2. Inexact Matches: The Problems that Remain

Before the focusing mechanisms can be extended to handle inexact matches two major problems must be addressed: determining how to decide whether an inexact match is close enough and determining how to decide between accepting an inexact match and considering a shift in focus. For the first problem, focusing makes it possible to determine the closest match, but not to decide whether that match is close enough. For example, if a red ball and a green ball are in focus, then the red ball comes closest to matching the description "the red block" but not close enough to be considered the referent of that phrase. For the second problem, if no exact match can be found in explicit focus the matching procedures must decide whether to accept a referent that inexactly matches a description or to consider the possibility that the speaker wants to focus on some new entity. For example, should a hearer confronted with the phrase "the red spot" in the situation just described look for a red spot on one of the balls? Answers to these questions require research on some fundamental issues in semantics and on speech errors.

### 3. Focusing and Perspective

Focusing involves not only highlighting certain entities, but also highlighting certain ways of viewing those entities. For example, a doctor may be viewed as a member of the medical profession or as having a role in a family. In the process of focusing on some entity, the speaker also chooses a certain perspective on that entity and, as a result, focuses on that entity from that perspective (Fillmore, 1978; Halliday, 1977). Fillmore says,

The point is that whenever we pick a word or phrase, we automatically drag along with it the larger context or framework in terms of which the word or phrase we have chosen has an interpretation. It is as if descriptions of the meanings of elements must identify simultaneously "figure" and "ground".

To say it again, whenever we understand a linguistic expression of whatever sort, we have simultaneously a background scene and a perspective on that scene.

The perspective from which an entity is viewed influences how further information about that entity is accessed. The representation of focus presented in Grosz (1977) allows for differential access to properties of an entity, but this addresses only one part of the problem.\* Using the initial perspective from which an entity is viewed for differential access, does not rule out considering a concept differently from the way it has already been portrayed. Instead, it orders the way in which aspects of the concept are to be examined. One of the problems this raises is how to decide; when to consider a switch in perspective, when to abandon deriving properties or searching items implicitly focused by an initial perspective, and when to examine other aspects of the entity.

Another problem that relates to perspective is how perspective influences the particular description a speaker chooses. Does global focus give an indication to a speaker of which properties to choose?

-----  
\* Consequently, the reference resolution mechanisms did not use this feature.

The preceding fragments of dialogue in Section B contained several examples that illustrated the effect of differences in how a speaker and hearer were focused on communication. This suggests that focusing, though often quite useful, can cause problems for people; similar problems may be unavoidable in a natural language processing system.

#### 4. Focusing and Beliefs

An additional aspect of focus that has not yet been addressed is its interaction with a representation of beliefs. The dialogue fragments in the section on description pointed out some of the problems that arise when the two participants know different things about the entity being described. It is important, then, for a speaker to be able to separate his own beliefs from what he believes his hearer knows or believes. It seems equally clear from the dialogues, however, that focusing is not one of the things that is separate for the two participants. There is a pervasive assumption by speaker and hearer that they share a common focus (this is, in fact, an important part of how and why focusing works). Of course, the speaker is always a step ahead of the hearer in shifting focus, but communication only ensues if the shift is clearly indicated to the hearer. The main extension that seems to be needed here is to coordinate the focusing mechanisms with an encoding of knowledge that distinguishes beliefs (rather than, as is now the case, with some uniform encoding of knowledge that does not distinguish between speaker and hearer), and a reasoning system that can reason about knowledge and beliefs (e.g., Moore 1979, Cohen 1978).

#### F. Summary

Focusing is the active process, engaged in by the participants in a dialogue, of concentrating attention on, or highlighting, a subset of their shared reality. Not only does it make communication more efficient, it makes communication possible. Speaker and hearer can concentrate on a small portion of what they know and ignore the rest. The importance of focusing in communication is clearly demonstrated by

the definite descriptions that are used in dialogue. For a natural language processing system to carry on a dialogue with a person it must include mechanisms that computationally capture this focusing process. This paper has examined the requirements that definite descriptions impose on such mechanisms, discussed focusing mechanisms included in a computer system for understanding task-oriented dialogue, and indicated future research problems entailed in modeling the focusing process more generally.

## REFERENCES

- Chafe, Wallace L., "The Flow of Thought and the Flow of Language," Syntax and Semantics, vol. 12, Talmy Givon, ed., (Academic Press, New York, 1979).
- Cohen, Philip R., "On Knowing What to Say: Planning Speech Acts," Ph. D. thesis, University of Toronto, Canada, 1978.
- Deutsch[Grosz], Barbara G., "Typescripts of Task Oriented Dialogs," SUR Note 146, Artificial Intelligence Center, Stanford Research Institute, Menlo Park, California, August 20, 1974.
- Donnellan, Keith, "Reference and Definite Description," The Philosophical Review, Vol. 75, 1966. Reprinted in Semantics, Danny P. Steinberg and Leon A. Jakobovits, eds., pp. 100-114 (The University Press, Cambridge, 1971).
- Downing Pamela A., "On 'Basic Levels' and the Categorization of Objects in English Discourse," Proceedings of the Third Annual Meeting of the Berkeley Linguistics Society, Berkeley, California, February 1977.
- Evans, Thomas G., "A Heuristic Program to Solve Geometric-Analogy Problems," Ph. D. thesis, Department of Mathematics, Massachusetts Institute of Technology, Cambridge, Massachusetts, May 1963.
- Fillmore, Charles J., "The Case for Case Reopened," in Syntax and Semantics, vol. 8, Peter Cole and Jerrold M. Sadock, eds. (Academic Press, New York, 1978).
- Freedle, Roy O., "Language Users as Fallible Information-Processors: Implications for Measuring and Modeling Comprehension," in Language Comprehension and the Acquisition of Knowledge, John B. Carroll and Roy O. Freedle, eds., pp. 169-209 (Winston, Washington, D.C., 1972).
- Gregory, R. L., Eye and Brain: The Psychology of Seeing (McGraw Hill, New York 1966).
- Grice, H., "Logic and Conversation," in Syntax and Semantics, P. Cole and J. Morgan, eds., Vol. 3, pp. 41-58 (Academic Press, New York 1975).
- Grimes, Joseph E., The Thread of Discourse (Mouton, The Hague, 1975).
- Grosz, Barbara J., "The Representation and Use of Focus in Dialogue Understanding," Ph. D. thesis, University of California, Berkeley, California. Also Technical Note No. 151, Artificial Intelligence Center, SRI International, Menlo Park, California, 1977.
- Grosz, Barbara J. and Hendrix, Gary G., "A Computational Perspective on Indefinite Reference," presented at Sloan Workshop on Indefinite Reference, University of Massachusetts, Amherst, Massachusetts,

- December 1978. Also Technical Note No. 181, Artificial Intelligence Center, SRI International, Menlo Park, California (in preparation).
- Halliday, Michael A., "Notes on Transitivity and Theme in English, Part 2," Journal of Linguistics, Vol. 31, 177-274, 1967.
- Halliday, Michael A., "Language as Code and Language as Behaviour: A Systemic-functional Interpretation of the Nature and Ontogenesis of dialogue," in Semiotics of Culture and Language, Sydney M. Lamb and Adam Makkai, eds. 1977.
- Halliday, Michael A., and Hasan, Ruqaiya, Cohesion in English (Longman, London 1976).
- Hendrix, Gary G., "Partitioned Networks for the Mathematical Modeling of Natural Language Semantics," Technical Report NL-28, Department of Computer Sciences, University of Texas, Austin, Texas, 1975.
- Hendrix Gary G., "The Representation of Semantic Knowledge," in Understanding Spoken Language D. E. Walker, ed. (Elsevier North-Holland, Inc. New York, 1978).
- Hobbs Jerry R., "A Computational Approach to Discourse Analysis," Research Report 76-2, Department of Computer Sciences, City College, CUNY, December 1976.
- Levy, David M., "Communicative Goals and Strategies: Between Discourse and Syntax," in Syntax and Semantics, vol. 12, Talmy Givon, ed., (Academic Press, New York, 1979).
- Moore, Robert C., "Reasoning About Action and Knowledge," Ph.D. Thesis, Massachusetts Institute of Technology, Cambridge, Massachusetts, February 1979.
- Olson, David R., "Language and Thought: Aspects of a Cognitive Theory of Semantics," Psychological Review, Vol. 77, pp. 257-273, 1970.
- Robinson, Ann E., "Investigating the Process of Natural-Language Communication," Technical Note 165, Artificial Intelligence Center, SRI International, Menlo Park, California, July 1978.
- Rubin, A. D., "A Theoretical Taxonomy of the Differences Between Oral and Written Language," in Theoretical Issues in Reading Comprehension, R. Sprio, B. Bruce and W. Brewer, eds., (Lawrence Erlbaum, Hillsdale, N.J., 1978).
- Rumelhart, David E., "Notes on a Schema for Stories," in Representation and Understanding: Studies in Cognitive Science, Daniel R. Bobrow and Alan Collins, eds. (Academic Press, New York, 1975).
- Sacerdoti, Earl D., A Structure for Plans and Behavior, (Elsevier North-Holland, Inc., New York, 1977).
- Sidner, Candace L., "A Computational Model of Co-reference Comprehension in English," Ph. D. thesis, Massachusetts Institute of Technology, Cambridge, Massachusetts (in preparation).
- van Dijk, Teun A., Some Aspects of Text Grammars: A Study in Theoretical Linguistics and Poetics (Mouton, The Hague, 1972).



Walker, Donald E., Understanding Spoken Language, (Elsevier North-Holland, Inc., New York, 1978).

Webber, B. L., "A Formal Approach to Discourse Anaphora," BBN Report No. 3761, Bolt Beranek and Newman Inc., Cambridge, Massachusetts, May 1978.

Winston, Patrick H., "Learning Structural Descriptions From Examples," MAC TR-76. MIT Artificial Intelligence Laboratory, Cambridge, Massachusetts, 1970.

