

Award Number: DAMD17-97-1-7316

TITLE: Development and Use of Novel Tools to Directly Screen for  
Substrates of Cyclin Dependent Kinases

PRINCIPAL INVESTIGATOR: Joseph Donovan, Ph.D.

CONTRACTING ORGANIZATION: Cold Spring Harbor Laboratory  
Cold Spring Harbor, New York 11724

REPORT DATE: August 2000

TYPE OF REPORT: Annual Summary

PREPARED FOR: U.S. Army Medical Research and Materiel Command  
Fort Detrick, Maryland 21702-5012

DISTRIBUTION STATEMENT: Approved for Public Release;  
Distribution Unlimited

The views, opinions and/or findings contained in this report are those of the author(s) and should not be construed as an official Department of the Army position, policy or decision unless so designated by other documentation.

20010419 056

# REPORT DOCUMENTATION PAGE

Form Approved  
OMB No. 0704-0188

Public reporting burden for this collection of information is estimated to average 1 hour per response, including the time for reviewing instructions, searching existing data sources, gathering and maintaining the data needed, and completing and reviewing this collection of information. Send comments regarding this burden estimate or any other aspect of this collection of information, including suggestions for reducing this burden to Washington Headquarters Services, Directorate for Information Operations and Reports, 1215 Jefferson Davis Highway, Suite 1204, Arlington, VA 22202-4302, and to the Office of Management and Budget, Paperwork Reduction Project (0704-0188), Washington, DC 20503

<b>1. AGENCY USE ONLY (Leave blank)</b>	<b>2. REPORT DATE</b> August 2000	<b>3. REPORT TYPE AND DATES COVERED</b> Annual Summary (1 Jul 97 - 1 Jul 00)	
<b>4. TITLE AND SUBTITLE</b> Development and Use of Novel Tools to Directly Screen for Substrates of Cyclin Dependent Kinases		<b>5. FUNDING NUMBERS</b> DAMD17-97-1-7316	
<b>6. AUTHOR(S)</b> Joseph Donovan, Ph.D.		<b>8. PERFORMING ORGANIZATION REPORT NUMBER</b>	
<b>7. PERFORMING ORGANIZATION NAME(S) AND ADDRESS(ES)</b> Cold Spring Harbor Laboratory Cold Spring Harbor, New York 11724  <b>E-MAIL:</b> donovan@cshl.org			
<b>9. SPONSORING / MONITORING AGENCY NAME(S) AND ADDRESS(ES)</b>  U.S. Army Medical Research and Materiel Command Fort Detrick, Maryland 21702-5012		<b>10. SPONSORING / MONITORING AGENCY REPORT NUMBER</b>	
<b>11. SUPPLEMENTARY NOTES</b> <p style="text-align: center;">Report contains color photos</p>			
<b>12a. DISTRIBUTION / AVAILABILITY STATEMENT</b> Approved for public release; distribution unlimited			<b>12b. DISTRIBUTION CODE</b>
<b>13. ABSTRACT (Maximum 200 Words)</b>  <p>The aim of this research is to gain further insights into the means by which cell proliferation is controlled by cyclin dependent kinases. To this end, a screen has been carried out for proteins that interact with the budding yeast cdk, Cdc28. 10 novel interacting proteins have been identified in a two-hybrid screen using a Gal4/Cdc28 fusion as the bait. Several of the putative interacting proteins have been shown to interact with specific cyclin-Cdc28 kinase complexes. For each of the 10 two-hybrid positives the nature of the Cdc28 interaction is currently being determined by biochemical means.</p> <p>The functional difference between cyclins in their abilities to induce and repress transcription has been investigated using the genomic technology of microarrays. In addition, the complete set of cell cycle regulated genes in yeast has been defined. This work has now been published (MBC 9:3273-3297 1998), and a full description and complete data sets are available on a public website at <a href="http://cellcycle-www.stanford.edu">http://cellcycle-www.stanford.edu</a>.</p>			
<b>14. SUBJECT TERMS</b> Breast Cancer, cell cycle, budding yeast, cdk, cyclins, transcription two-hybrid screen, DNA microarrays		<b>15. NUMBER OF PAGES</b> 36	
<b>17. SECURITY CLASSIFICATION OF REPORT</b> Unclassified		<b>16. PRICE CODE</b>	
		<b>20. LIMITATION OF ABSTRACT</b> Unlimited	
<b>18. SECURITY CLASSIFICATION OF THIS PAGE</b> Unclassified		<b>19. SECURITY CLASSIFICATION OF ABSTRACT</b> Unclassified	

## FOREWORD

Opinions, interpretations, conclusions and recommendations are those of the author and are not necessarily endorsed by the U.S. Army.

U.S. Where copyrighted material is quoted, permission has been obtained to use such material.

U.S. Where material from documents designated for limited distribution is quoted, permission has been obtained to use the material.

U.S. Citations of commercial organizations and trade names in this report do not constitute an official Department of Army endorsement or approval of the products or services of these organizations.

N/A In conducting research using animals, the investigator(s) adhered to the "Guide for the Care and Use of Laboratory Animals," prepared by the Committee on Care and use of Laboratory Animals of the Institute of Laboratory Resources, national Research Council (NIH Publication No. 86-23, Revised 1985).

N/A For the protection of human subjects, the investigator(s) adhered to policies of applicable Federal Law 45 CFR 46.

X In conducting research utilizing recombinant DNA technology, the investigator(s) adhered to current guidelines promulgated by the National Institutes of Health.

X In the conduct of research utilizing recombinant DNA, the investigator(s) adhered to the NIH Guidelines for Research Involving Recombinant DNA Molecules.

N/A In the conduct of research involving hazardous organisms, the investigator(s) adhered to the CDC-NIH Guide for Biosafety in Microbiological and Biomedical Laboratories.

J. D. Donovan 7/27/00

## Table of Contents

Cover.....	1
SF 298.....	2
Foreword.....	3
Table of Contents.....	4
Introduction.....	5
Body.....	6
Key Research Accomplishments.....	11
Reportable Outcomes.....	11

**Introduction**

We have undertaken two separate projects to gain insights into the means by which cell proliferation is controlled by cyclin dependent kinases. First, a screen has been carried out for proteins that interact with the budding yeast cdk, Cdc28. Ten novel interacting proteins have been identified in a two-hybrid screen using a Gal4/Cdc28 fusion as the bait. For each of the positives the nature of the Cdc28 interaction is being determined (i.e. whether substrate or part of a complex). Second, using DNA microarray technology we have characterized yeast cyclin specificity in terms of their ability to induce and repress transcription of other yeast genes. In addition, in collaboration with Dr. Botstein's group at Stanford University, we have sought to define the complete set of cell cycle-regulated genes in yeast. The microarray project has now been completed and a paper published (1998 MBC 9 3723-3297).

## Screen for Cdc28 interacting proteins

A two-hybrid screen was carried out using a Gal4/Cdc28 fusion protein as bait. In collaboration with Stan Field's laboratory, the Gal4/Cdc28 fusion was tested for two hybrid interactions against a library containing all budding yeast ORFs fused to the Gal4 activation domain.

## **Results**

Besides several known interactor ten novel interacting proteins were identified in the two-hybrid screen using a Gal4/Cdc28 fusion as the bait

### Known interactors

Cln1

Cln2

Cln3

Clb1

CAK1 (Cdc28 activating kinase, a known interactor)

### **Novel interactors**

**PCL7** Pcl7 is a cyclin normally associated with Pho85p. All cyclins have common structure called the cyclin fold that consists of 5 alpha helices, and a cross complex formation of a Pho85 cyclin with Cdc28 is not unreasonable. Indeed in a two hybrid screen using Pho85, in which *PCL7* was originally isolated, Cln1, Ume3 and Ccl1 were all isolated as interactors, all of which are considered partners for other Cdks (Cdc28, Ume5 and Kin28 respectively) [Measday et al, *Mol Cell Biol* **17** 1212-23 1997]. Whether this interaction is functionally relevant is however unclear. If in the absence of Pho85 (which is not essential), a *PCL7* deletion results in additional phenotypes, then Pcl7 may have some Pho85 independent functions.

**STB1** A protein that binds Sin3p, a transcriptional regulator. Sin3 contains 9 potential Cdc28 consensus phosphorylation sites, which out of over 6000 yeast proteins places it 19<sup>th</sup> on the list of most sites. In fact it has the 5<sup>th</sup> highest density of Cdc28 sites of all yeast proteins.

**SPC42** Spindle pole body component. Spc42 has also been isolated in an unpublished 2-hybrid screen using Clb5 as the bait. It is possible that Spc42 is a substrate itself, or that it acts to actually localize Cdc28 complexes to the SPB where they can phosphorylate/interact with other targets.

**ARP8** Actin related protein. Nothing much is really known about ARP8. It has 3 potential Cdc28 phosphorylation sites, and of all the actin-related proteins in yeast, it has the largest number of insertions between the actin conserved blocks of homology.

**YKR077W** This protein is a good candidate for a Cdc28 substrate because it contains 7 potential Cdc28 phosphorylation sites. The expression of *YKR077W* peaks at the G1/S phase boundary, suggesting a cell cycle role. We also know, from unpublished data, that *YKR077W* is non-essential, and we didn't observe any obvious phenotype in the deletant. There is however a weak homologue, *YOR066W*. What gives us a little more confidence that it may be a real homologue is the fact that yeast has several duplicated chromosomal blocks. One block contains *YKR077W*, and the corresponding duplicate block contains *YOR066W* in the corresponding position. *YOR066W* also has a large number of potential Cdc28 phosphorylation sites, it is cell cycle regulated, though in this case it peaks at the M/G1 boundary.

**YOR066W** A homolog of *YKR077W*

**YDR130C** Novel. It contains 5 potential phosphorylation sites, and is predicted to form a coiled-coil structure, which is often indicative of structural proteins, either with a role in the SPB, or microtubule biology. In addition the transcript is regulated, and that it peaks somewhere in S/G2, again suggestive of a role in the cell cycle.

**YPL014W** Novel.

**YPL070W** Novel.

**YKL014C** Novel.

### Cyclin specificity of two-hybrid interaction

Of the many cyclins in yeast the function of the G1 cyclins, Cln1-3, the S-phase cyclins Clb5 and 6, and the mitotic cyclins Clb1-4 are best understood. For each of the ten non-cyclin positives it would be very useful to know which of the cyclin-cdc28 kinase complexes they interacted with. Therefore it was decided to test the 10 positives for two-hybrid interactions using different cyclins as baits. To do this Clb2, Clb5 and Cln3 fusions were constructed and the plasmids transformed into a reporter strain harbouring the Cdc28 interacting positives. Transformed cells were plated out on leu-trp- SC plates and single colonies obtained. Patched colonies on fresh plates were then replica-plated to his-, his- +3mM 3AT, his- +10mM3AT plates and incubated at 30C for several days. From this the following results were obtained:

Cyclin bait used in two hybrid assay

<u>GENE</u>	<u>CLN3</u>	<u>CLB5</u>	<u>CLB2</u>
STB1		+	+
SPC42			
ARP8			
YKR077W			+
YOR066W		+	+
YDR130C		+	
YPL0142W	+		
YPL070W			
YKL014C			
CAK1			

Significantly, all of the positive interactions that were noted in the table above were also observed on plates containing either 3 or 10mM 3AT.

Deletion analysis of *Δykr077w* and *Δyor066w* mutant strains

Probably the most exciting result from the Cdc28 two-hybrid screen was the isolation of two positives that are homologs, *YKR077W* and *YOR066W*. From our analysis of all cell cycle-regulated genes in yeast we have established that both genes are cell cycle regulated at the G1/S boundary. Furthermore *YOR066W* encodes a protein that has several potential Cdc28 phosphorylation sites, making it a good candidate for a Cdk substrate. I decided to carry out a deletion analysis of both genes to see whether they carried out an essential function. Both *Δykr077w:URA3* and *Δyor066w:KANMX* haploid strains were found to be viable. Furthermore both single deletion strains show little difference in growth rates compared to that of an isogenic wild type control strain. Surprisingly, spores deleted for both *YKR077W* and *YOR066W* were readily obtained, demonstrating that the two genes, though homologs, do not carry out a common essential function. Furthermore, similar to the single deletions, I have been unable to detect any significant growth or morphological defects in *Δykr077w* and *Δyor066w* cells compared to an isogenic wildtype control strain.

Nature of the interaction between *Ykro77w* and Cdc28

I have examined, biochemically, whether the protein encoded by *YKR077W* interacts with Cdc28. A plasmid was obtained containing *YKRO77W* under the control of the *GAL* promoter. In addition the gene carried the HA epitope tag at the C-terminus. By



Western blotting a band was detected that migrated at a size consistent with the predicted molecular weight of the Ykro77w protein. However the protein migrates as a single band rather than a doublet- which would be consistent with Ykro77w being a phosphoprotein. Next I endeavoured to Co-immunoprecipitate the Ykro77w and Cdc28 proteins. To detect Cdc28 I used either polyclonal antibody raised against the Cdc28 protein or PSTAIR antibody, which recognises a conserved motif in the protein structure of all cyclin-dependent kinases. However, despite numerous attempts using different amounts of protein extracts, incubation times and varying other parameters I have yet to detect an interaction between the two proteins.

### **Further characterization of the Cdc28 interactor Ypl014w**

Another very interesting positive identified from the Cdc28 two-hybrid screen was Ypl014w. This protein appears to interact specifically with Cln3-Cdc28, suggesting that Ypl014w may have some role in linking cellsize to passage through START in G1. A strain deleted for *YPL014w* was constructed, and logarithmically growing  $\Delta ypl014w$  cells were compared to an isogenic wild type strain. No significant difference was found in cell size, DNA content or morphology between the wildtype and mutant strains. A plasmid was constructed harbouring ypl014w under the control of the *GAL* promoter. Using this plasmid high level expression of ypl014wc was induced in wildtype yeast cells. However, this did not result in any significant morphological or growth defects compared to the control strain.

A plasmid has also been constructed which has *GAL-YPL014w* tagged with three copies of the HA epitope. We are currently using this to try and Co-immunoprecipitate Cln3 and Ypl014w.

### **Further two hybrid screens**

A two hybrid screen was carried out with Cln3 fused to the Gal4 DNA binding domain. A total of eleven positives were identified, the most interesting of which are:

*CDC28*

*YPL014w*

*SPA2*- involved in cell polarity

*NGR1*- RNA binding protein

*PAC1*- interacts genetically with the spindle protein Cin8

Thus, Ypl014w has been identified in two separate and independent two hybrid screens using either Cdc28m or Cln3 as bait.

### **Genome wide analysis of cyclin specificity and cell cycle transcription**

The functional difference between cyclins in their abilities to induce and repress transcription has been investigated using the genomic technology of microarrays. In addition the complete set of cell cycle regulated genes in yeast has been defined. This work has now been published (MBC 9 3273-3297 1998), and a full description and complete data sets are available on a public website at

<http://cellcycle-www.stanford.edu>

### **Cell cycle regulated genes in budding yeast**

Approximately 800 genes were found whose transcripts oscillate through one peak per cell cycle. About 300 of the cell cycle regulated genes could be grouped by both function and phase of gene expression. Many functional categories display strong biases toward gene expression during particular intervals of the cell cycle. Examples include genes involved in DNA synthesis and DNA repair (G1), mating (M, M/G1 and G1), chromatin structure (G1 and S), and methionine biosynthesis (S and G2):

### **Cdk activity and gene expression**

#### **Summary of results**

A large number of genes (>200) are induced in G1 and S by the action of Cln3-Cdc28p on MBF and SBF.

Of the genes that are cell cycle regulated, there are 116 genes that are induced more than twofold by Cln3p, and are repressed by Clb2p. Of these, about 100 peak in G1 or S phase.

Cln3 can repress the transcription of certain genes, particularly a group of genes involved in mating.

Clb2p-Cdc28 induces the expression of > 50 genes in M or M/G1

There are 33 genes induced greater than twofold by Clb2p that are repressed by Cln3p. All cell cycle regulated genes responsive to Clb2 peak in either M or M/G1.

## **Research accomplishments**

11

-Comprehensive identification of cell cycle-regulated genes in yeast

-Identification of 10 novel cdk interacting proteins

-Establishing that several of the novel cdk interacting proteins interact with specific cyclin-cdc28 complexes.

## **Reportable outcomes**

-Paper published on the comprehensive analysis of cell cycle-regulated genes in yeast (1998 MBC 9 3273-3297)

-Public website established providing a full description and complete data sets of all cell cycle-regulated genes in yeast:

<http://cellcycle-www.stanford.edu>

# Comprehensive Identification of Cell Cycle–regulated Genes of the Yeast *Saccharomyces cerevisiae* by Microarray Hybridization<sup>□</sup>

Paul T. Spellman,<sup>\*†</sup> Gavin Sherlock,<sup>\*†‡</sup> Michael Q. Zhang,<sup>‡</sup> Vishwanath R. Iyer,<sup>§</sup> Kirk Anders,<sup>\*</sup> Michael B. Eisen,<sup>\*</sup> Patrick O. Brown,<sup>§||</sup> David Botstein,<sup>\*¶</sup> and Bruce Futcher<sup>‡</sup>

<sup>\*</sup>Department of Genetics, Stanford University Medical Center, Stanford, California 94306-5120; <sup>‡</sup>Cold Spring Harbor Laboratory, Cold Spring Harbor, New York 11724-2209; <sup>§</sup>Department of Biochemistry, Stanford University Medical Center, Stanford, California 94306-5428; and <sup>||</sup>Howard Hughes Medical Institute, Stanford, California 94305-5428

Submitted September 4, 1998; Accepted October 15, 1998  
Monitoring Editor: Gerald R. Fink

We sought to create a comprehensive catalog of yeast genes whose transcript levels vary periodically within the cell cycle. To this end, we used DNA microarrays and samples from yeast cultures synchronized by three independent methods:  $\alpha$  factor arrest, elutriation, and arrest of a *cdc15* temperature-sensitive mutant. Using periodicity and correlation algorithms, we identified 800 genes that meet an objective minimum criterion for cell cycle regulation. In separate experiments, designed to examine the effects of inducing either the G1 cyclin Cln3p or the B-type cyclin Clb2p, we found that the mRNA levels of more than half of these 800 genes respond to one or both of these cyclins. Furthermore, we analyzed our set of cell cycle–regulated genes for known and new promoter elements and show that several known elements (or variations thereof) contain information predictive of cell cycle regulation. A full description and complete data sets are available at <http://cellcycle-www.stanford.edu>

## INTRODUCTION

In 1981 Hereford and coworkers discovered that yeast histone mRNAs oscillate in abundance during the cell division cycle (Hereford *et al.*, 1981). To date 104 messages that are cell cycle regulated have been identified using traditional methods, and it was estimated that some 250 cell cycle–regulated genes might exist (Price *et al.*, 1991). There are several reasons why genes might be regulated in a periodic manner coincident with the cell cycle. Such regulation might be required for the proper functioning of mechanisms that maintain order during cell division. Alternatively, regulation of these genes could simply allow conservation of resources. Much of the literature has focused on the

posttranscriptional mechanisms that control the basic timing of the cell cycle. However, there is also clear evidence that *trans*-acting factors play a critical role in the regulation of the abundance of many cell cycle–regulated transcripts.

Most identified cell cycle controls that exert influence over mRNA levels do so at the level of transcription. Three major types of cell cycle transcription factors are known in yeast, the MBF and SBF factors, Mcm1p-containing factors, and Swi5p/Ace2p (Table 1). Many genes expressed at about the G1/S transition contain MCB or SCB elements in their promoters to which MBF and SBF bind respectively (for review, see Koch and Nasmyth, 1994). It is now apparent that SBF is not as specific for SCBs as was originally thought but, rather, can bind, at least in some cases, to motifs more closely matching the MCB consensus (Partridge *et al.*, 1997). MBF and SBF are activated posttranslationally by Cln3p-Cdc28p, and SBF, at least, is inacti-

<sup>□</sup> A complete data set for this article is available at [www.molbiolcell.org](http://www.molbiolcell.org).

<sup>†</sup> These authors contributed equally to this work.

<sup>¶</sup> Corresponding author.

**Table 1.** Transcription factors that regulate the cell cycle

Complex	Composition	Site name	Site	Reference
SBF	Swi6p + Swi4p	SCB	CACGAAA	Nasmyth, 1985; Andrews and Herskowitz, 1989
MBF	Swi6p + Mbp1p	MCB	ACGCGT	Lowndes <i>et al.</i> , 1991; McIntosh <i>et al.</i> , 1991; Koch <i>et al.</i> , 1993
Mcm1p	Mcm1p	MCM1	TTACCNAATTNGGTAA	Acton <i>et al.</i> , 1997
SFF	SFF	SFF	GTMAACAA	Althoefer <i>et al.</i> , 1995
Ace2p	Ace2p	SWI5	ACCAGC	Dohrmann <i>et al.</i> , 1996
Swi5p	Swi5p	SWI5	ACCAGC	Knapp <i>et al.</i> , 1996

vated by Clb2p-Cdc28p (Amon *et al.*, 1993). It is this cyclin-dependent activation and inactivation that causes MBF- and SBF-mediated transcription to be cell cycle regulated. Mcm1p can bind with other DNA binding proteins to mediate a specific biological effect. In cooperation with Ste12p, Mcm1p directs the cell cycle expression of some genes in early G1 phase (Oehlen *et al.*, 1996). In cooperation with an uncloned factor called "Swi five factor" (SFF), it induces the expression of *CLB1*, *CLB2*, *BUD4*, and *SWI5* in M (Lydall *et al.*, 1991; Sanders and Herskowitz, 1996). Finally, possibly acting without a partner, it induces transcription of *CLN3*, *SWI4*, and *CDC6* at the M/G1 boundary (McInerney *et al.*, 1997). The Mcm1p + SFF combination is interesting, because it is somehow activated by Clb2p-Cdc28p, and Mcm1p + SFF then induces further transcription of *CLB2*. Thus, Mcm1p is part of a positive feedback loop for *CLB2* transcription. Finally, Swi5p and Ace2p, which are transcriptionally controlled by Mcm1p and SFF, are responsible for the expression of many genes in M and M/G1 (Kovacech *et al.*, 1996). Some of these genes are responsible for inactivating Clb2p and promoting cytokinesis, thus allowing exit from mitosis, and allowing the cycle to begin anew.

Many cell cycle-regulated genes are involved in processes that occur only once per cell cycle. Such processes include DNA synthesis, budding, and cytokinesis. Additionally many of these genes are involved in controlling the cell cycle itself, although in most cases it is unclear whether their regulated transcription is absolutely required. The cell division cycle is thus a complex self-regulating program, such that

many genes involved in aspects of the cell cycle are also controlled by it.

We present the results of a comprehensive series of experiments aimed at objectively identifying all protein-encoding transcripts in the genome of *Saccharomyces cerevisiae* that are cell cycle regulated. We used DNA microarrays to analyze mRNA levels in cell cultures that had been synchronized by three independent methods. These data were analyzed by deriving a numerical score based on a Fourier algorithm (testing periodicity) and by a correlation function that identified genes whose RNA levels were similar to the RNA levels of genes already known to be regulated by the cell cycle. This protocol allowed us to include data from a previously published study (Cho *et al.*, 1998). We find that ~800 genes are cell cycle regulated, which constitutes >10% of all protein-coding genes in the genome. We also find that about one-half of these genes can be controlled by the G1 cyclin *CLN3* and/or the mitotic cyclin *CLB2*. The primary data presented in this article, tools for examining them, and supporting analyses can be found at <http://cellcycle-www.stanford.edu>.

## MATERIALS AND METHODS

### Strains

Strains used in this study are shown in Table 2.

### Media and Growth Conditions

YEP medium (Sherman, 1991) was used in all experiments, supplemented with an appropriate carbon source. Carbon sources are indicated in the descriptions of each experiment and were used at a

**Table 2.** Strains used in this study

Name	Genotype	Source
DBY7286	MATa GAL2 <i>ura3</i>	This study
DBY8724	MATa GAL2 <i>ura3 bar1::URA3</i>	This study
W303a	MATa <i>ade2-1 trp1-1 leu2-3,112 his3-11, 15 ura3 can1-100 [psi<sup>+</sup>]</i>	Thomas <i>et al.</i> , 1989
#31	MATa <i>leu2 ura3 cln1::HIS3 cln2::TRP1 cdc34-2<sup>ts</sup> ura3-GAL-CLN3</i>	Schneider <i>et al.</i> , 1996
#245	W303a <i>clb1::URA3 clb2::LEU2 clb3::TRP1 clb4::HIS3 GAL-CLB2</i>	Fitch <i>et al.</i> , 1992
cdc15-2	W303a <i>cdc15-2<sup>ts</sup></i>	Fitch <i>et al.</i> , 1992

final concentration of 2% (wt/vol), unless otherwise noted. The pH of the YEP for the  $\alpha$  factor experiment was adjusted to 5.5 before use. The medium used for the elutriation was first passed through Whatman #1 filter paper. Cultures of yeast were shaken at 250–300 rpm, in a volume no more than 25% of the vessel maximum at the temperature specified in the description of each experiment.

### Microarray Manufacture

Yeast ORFs were amplified using gene PAIRS primers (Research Genetics, Huntsville, AL). One hundred-microliter PCR reactions were performed in 96-well PCR plates using each primer pair with the following reagents: 1  $\mu$ M each primer, 200  $\mu$ M each dATP, dCTP, dTTP, and dGTP, 1 $\times$  PCR buffer (Perkin Elmer-Cetus, Norwalk, CT), 2 mM MgCl<sub>2</sub>, and 2 U of *Taq* DNA polymerase (Perkin Elmer-Cetus). Thermalcycling was performed in Perkin Elmer-Cetus 9600 thermalcyclers with a 5-min denaturation step at 94°C, followed by 30 cycles with melting, annealing, and extension temperatures and times of 94°C, 30 s; 54°C, 45 s; and 72°C, 3 min 30 s, respectively. Production of the correct PCR product was verified by gel electrophoresis. Products deemed to have failed were reamplified either by repeating the PCR reaction with the gene PAIRS primers, ordering custom primers, or using the yeast ORF DNA (Research Genetics) as a template. Reamplification of failed PCRs used the same protocol as initial amplification.

DNAs were prepared and printed onto microarrays as described previously (Shalon *et al.*, 1996; DeRisi *et al.*, 1997 [http://cmgm.stanford.edu/pbrown/]; Eisen and Brown, 1999) with 190- $\mu$ m spacing between the centers of each element. Each microarray was visually inspected, and all microarrays used in this study were estimated to be missing <1% of all elements except for arrays used in the *cdc15* experiments, which were missing ~3% of all elements.

### Cell Density and Size Measurements

All cell size measurements were made using a Coulter Counter Multisizer (Coulter Electronics, Hialeah, FL) or a Beckman FACScan workstation (Beckman Instruments, Fullerton, CA). The Coulter Counter was also used to measure the cell density for elutriation. Cell densities in the  $\alpha$  factor experiment were measured at OD<sub>600</sub> using a Pharmacia Ultraspec III spectrophotometer (Pharmacia, Piscataway, NJ).

### Budding Index Calculations

Each sample was sonicated for 30 s with a Virsonic 300 (Virtis, Gardiner, NY) microprobe equipped sonicator at 50% power to separate divided cells. At least 200 cells were counted and scored for the presence of a bud.

### DNA Content Determination

Samples were prepared as described previously (Futcher, 1993), and DNA content was measured using a Beckman FACScan workstation.

### Nuclear Staining

Cells were washed in water and resuspended in water containing DAPI at 1  $\mu$ g/ml. Cells were then placed on a glass slide and visualized by fluorescence microscopy, using a Zeiss Axioplan microscope (Carl Zeiss, Thornwood, NY).

### $\alpha$ Factor-based Synchronization

Yeast strain DBY8724 was grown to an OD<sub>600</sub> of 0.2 in YEP glucose, an asynchronous sample was taken, and  $\alpha$  factor (PAN facility, Beckman Center, Stanford University) was added to a concentration of 12 ng/ml. After 120 min the  $\alpha$  factor was removed by pelleting the cells for 5 min in a Sorvall (Newtown, CT) S34 rotor at 3000 rpm

and decanting the supernatant. The arrested cells were resuspended in fresh YEP glucose to an OD<sub>600</sub> of 0.18. Every 7 min, for the next 140 min, 25-ml samples were taken for RNA, and 5-ml samples were taken for FACS analysis. At 91 min after release the OD<sub>600</sub> of the culture was reduced to ~0.2 from ~0.4 by addition of fresh medium.

### Size-based Synchronization

Nine liters of yeast strain DBY7286 were grown in YEP ethanol (2%, vol/vol) at 25°C to a cell density of  $1.5 \times 10^7$  cells/ml. Cells were pelleted in a Beckman JA-10 rotor for 10 min. The supernatant was saved and is referred to as clarified medium. Cells were resuspended in 300 ml of the clarified medium and sonicated for 2 min with a Virsonic 300 equipped with a microprobe at 50% power. This volume was loaded into a dual-chamber elutriation chamber (Beckman Instruments, Fullerton, CA; catalog numbers 356940 and 356941) in a Beckman J-6 M/E centrifuge equipped with a JE-5.0 elutriation rotor. The elutriator was run with clarified medium at 25°C. Unbudded daughter cells (400 ml at  $2.3 \times 10^7$  cells/ml) were collected at a modal cell volume of 17.7 fl and grown at 25°C. Samples were taken every 30 min for the next 6.5 h with independent samples for DAPI staining (1 ml), FACS analysis (2 ml), budding index (1 ml), and RNA preparation (25 ml). After harvesting, the samples for DAPI, FACS, and budding index were immediately chilled on ice.

### *Cdc15*-based Synchronization

The *cdc15-2* (DBY8728) strain was grown to  $2.5 \times 10^6$  cells/ml in YEP glucose medium at 23°C. The culture was then shifted to an air incubator at 37°C and held at that temperature for 3.5 h. By this time, cell density had reached  $6.6 \times 10^6$  cells/ml, and 96% of the cells were large dumbbells characteristic of a *cdc15* arrest. The cells were then released from the *cdc15* arrest by shifting the culture to a 23°C water bath. Samples were taken every 10 min for 300 min, starting at the time of the shift to the 23°C water bath. By 300 min after shift, cell density had reached  $4 \times 10^7$  cells/ml. Part of the same original culture was grown at 23°C to  $1 \times 10^7$  cells/ml, and cells were harvested for extraction of the control mRNA. Progress through the cell cycle was monitored by the appearance of new buds.

Because *cdc15-2* cells do not quantitatively complete cell separation after a release from a 37°C arrest, FACS analysis is difficult to interpret. We therefore followed the progress of the *cdc15-2* cells through the cycle by monitoring the appearance of new buds. The first new buds appeared 50 min after the release to 23°C, when 12% of the dumbbells had small buds (usually, two small buds, one on each half of the dumbbell). The percentage of dumbbells with small buds was 52% at 60 min, 76% at 70 min, 96% at 80 min, and virtually 100% at 90 min, at which time almost all the dumbbells had not just one bud, but two, one on each half of the dumbbell. The second round of small buds appeared at 150 min, when 3% of the cells had small buds. The percentage was 9.7% at 160 min, 32% at 170 min, 68% at 180 min, and 81% at 190 min. The third round of small buds appeared at 270 min, although by this time synchrony was decaying.

### *Cln3* and *Cib2* Experiments

For the *Cln3* experiment strain 31 (DBY8725) was grown in YEP raffinose/galactose (1% each) at 23°C to a density of  $1 \times 10^7$  cells/ml. The cells were then filtered and washed with 2 vol of YEP and resuspended in YEP raffinose at 23°C. These cells arrested because of lack of *Cln* activity after incubating for 3 h. *Cdc34p* was then inactivated by shifting the culture to 37°C for 2.5 h. The culture was then split, and galactose was added to one-half at a final concentration of 2% (wt/vol). Cells from this culture were harvested every 10 min for 40 min for RNA. The entire control culture was harvested at

time 0. The experiment was performed twice (once for each hybridization in our data set). Data from the 40-min (first experiment) and 30-min (second experiment) postgalactose samples are shown.

For the *Cib2* experiment strain 245 (DBY8726) was grown to a density of  $5 \times 10^6$  at 30°C in YEP raffinose/galactose (1% each) and then centrifuged, and the cells were washed with 2 vol of YEP and then resuspended in YEP raffinose. After 6 h DMSO was added to a final concentration of 1%, and nocodazole was added to a final concentration of 15  $\mu\text{g}/\text{ml}$ . The culture was then split, and galactose was added to one-half at a final concentration of 2% (wt/vol). Cells from this culture were harvested every 10 min for 40 min for RNA. The entire control culture was harvested at time 0. The experiment was performed twice (once for each hybridization in our data set). Data from the two 40 min postgalactose samples are shown.

To control the *Cln3* and *Cib2* experiments for the effects of galactose addition, strain W303a (DBY8727) was grown in 250 ml of YEP raffinose at 30°C to a cell density of  $1 \times 10^7$  cells/ml. The culture was split in two, and to one-half (the experimental culture) was added galactose to a final concentration of 2% (wt/vol). Forty minutes later both cultures were harvested for preparation of mRNA. The data for this experiment are available on our web site.

### RNA Preparation

Samples for RNA isolation were taken by pipetting culture directly into 50-ml Falcon (Lincoln Park, NJ) tubes containing ~20 g of ice to quickly chill the cells. Cells were collected by spinning for 3 min in a tabletop centrifuge and then frozen by immersion in liquid nitrogen and stored at -80°C until RNA was prepared. RNA was prepared by adding 10 ml of water-saturated phenol, 10 ml of sodium acetate buffer (50 mM sodium acetate, 10 mM EDTA, pH 5.0), and 1 ml of 10% SDS (all prewarmed to 65°C) to each frozen cell pellet. Each mixture was incubated at 65°C for 10 min, vortexing vigorously every 1 min for 10 s. After spinning at 1500  $\times$  g for 10 min, the aqueous phase was transferred to another 50-ml conical tube containing 10 ml of water-saturated phenol. Samples were vortexed for 30 s, and the spin was repeated. Aqueous phases were again transferred to a new 50-ml conical tube and 10 ml of phenol:chloroform (1:1) were added, followed by a 15-min spin. RNA was precipitated by adding the aqueous phase to an equal volume of isopropanol and 0.1 vol of 3 M sodium acetate. Samples were spun for 30 min at 1500  $\times$  g to pellet the RNA. Pellets were washed with 70% ethanol and dried at room temperature. RNA pellets were dissolved in TE (10 mM Tris, 1 mM EDTA, pH 8.0) to ~2.5 mg/ml.

### Probe Preparation

Total RNA (15  $\mu\text{g}$ ) and 6  $\mu\text{g}$  of oligo-dT were combined in a total volume of 15  $\mu\text{l}$ . RNA oligo-dT mixtures were heated to 70°C for 1 min and then cooled on ice. Three microliters of 25 mM Cy3- or Cy5-conjugated dUTP (Amersham, Arlington Heights, IL), 3  $\mu\text{l}$  of 1 M DTT, 6  $\mu\text{l}$  of first-strand buffer (Stratagene, La Jolla, CA), 0.6  $\mu\text{l}$  of dNTPs (25 mM each dATP, dCTP, and dGTP and 15 mM dTTP), and 2  $\mu\text{l}$  of Superscript II (Stratagene) were added. Each sample was then incubated at 42°C for 2 h to generate Cy-labeled cDNA. Starting RNA was degraded by addition of 1.5  $\mu\text{l}$  of stop solution (1 N NaOH, 0.1 M EDTA) and incubation at 70°C for 10 min. Samples were neutralized by addition of 15  $\mu\text{l}$  of 0.1 N HCl and 400  $\mu\text{l}$  of TE (10 mM Tris, 1 mM EDTA, pH 7.4). Labeled cDNA was concentrated and separated from unbound fluor by separation in a Centricon-30 (Amicon, Danvers, MA) until no further fluor was visible in the flow through, and the probe was concentrated to <4  $\mu\text{l}$ .

### Microarray Hybridizations

A probe mixture (12  $\mu\text{l}$ ) consisting of Cy3- and Cy5-labeled cDNAs, 3 $\times$  SSC, 0.3% SDS, and 1.8  $\mu\text{g}/\mu\text{l}$  yeast tRNA was applied to each microarray. The microarray was covered by a 22-mm-square coverslip (Fisher Scientific, Pittsburgh, PA) and placed in a custom-manu-

factured hybridization chamber (see <http://cmgm.stanford.edu/pbrown/>). Ten microliters of water were placed inside the hybridization chamber before sealing, and the chamber was placed in a 65°C water bath. The microarrays were allowed to hybridize 4–6 h. Microarrays were removed from the chambers and placed in standard histochemistry slide holders where they were washed by plunging 30 times in each of the following solutions, respectively: 2 $\times$  SSC, 0.2% SDS; 0.4 $\times$  SSC; and 0.2 $\times$  SSC.

### Data Acquisition and Processing

Microarrays were scanned using a custom-built scanning laser microscope. Separate 2  $\times$  2-cm images were acquired for each fluor at a resolution of 20  $\mu\text{m}/\text{pixel}$ . Data were extracted by manually superimposing a grid of boxes over the combined Cy3–Cy5 image so that each box contained a single array spot. The average fluorescence intensity for each fluor within each box was recorded. The local background was estimated by averaging the intensities of the weakest 12% of the pixels in each box. Fluorescence ratios were computed based on the background corrected values. Spots of poor quality (as assayed by visual inspection) were removed from further consideration. As a measure of the internal consistency of the data for each spot, the pixel-by-pixel correlation coefficient between the Cy3 and Cy5 intensities was computed; spots with low correlation values (i.e., <0.4) were excluded from further analysis.

### Identification of mRNAs Regulated in a Cell Cycle-dependent Manner

Data for each gene in the  $\alpha$  factor time series were extracted from the database and were normalized so that the average  $\log_2(\text{ratio})$  over the course of the experiments was equal to 0. A Fourier transform (Eq. 1–3) was applied to the data series for each gene, and the resulting vector (C) was stored for each gene, where  $\omega$  is the period of the cell cycle,  $t$  is the time,  $\Phi$  is the phase offset, and  $\text{ratio}(t)$  is the ratio measurement at time  $t$ . We found that the magnitude of the Fourier transform (D, Eq. 4) was unstable for small variations of  $\omega$ , so we averaged the vectors of the transform over a range of 40 values, which were evenly spaced around the estimated division time for the experiment ( $66 \pm 11$ ). We initially set the value of  $\Phi$  to 0.

$$A = \sum \sin(\omega t + \Phi) \log_2(\text{ratio}(t)) \quad (1)$$

$$B = \sum \cos(\omega t + \Phi) \log_2(\text{ratio}(t)) \quad (2)$$

$$C = (A, B) \quad (3)$$

$$D = \sqrt{A^2 + B^2} \quad (4)$$

The expression profile of each gene across the experiments was then correlated to five different profiles representing genes known to be expressed in G1, S, G2, M, and M/G1 using a standard Pearson correlation function. The profiles for known gene classes were identified by averaging the  $\log_2(\text{ratio})$  data for each of the genes known to peak in each of the five time periods. The peak correlation score was defined as the highest correlation value between the data series for each gene and each of the profiles. The vector calculated by the Fourier transform was scaled by the peak correlation value.

The above process was repeated for the *cdc15* experiment ( $\omega$  varying between 60 and 80) and for the *cdc28* data ( $\omega$  varying between 80 and 100) from Cho *et al.* (1998). The *cdc28* data set was first converted to ratio style measurements by dividing each measurement by the average value of the measurements for that gene. Before this step it was necessary to exclude some data points that appeared to be aberrant. Any data value where the two values on either side were threefold different in the same direction were excluded. Each gene thus had three vector scores (one for each of the three analyzed data series).

To generate a single vector for each gene, we added the vectors for each experiment together. However, the value of  $\Phi$  for the three

experiments should not be the same, because the experiments start at different points in the cell cycle. Therefore, before combining the vectors from the three experiments, constants,  $\Phi_{cdc15}$  and  $\Phi_{cdc28}$  (relative to the  $\alpha$  factor experiment), were calculated for the *cdc15* and *cdc28* experiments, respectively, that maximized, for the known genes, the average magnitude of the summed vectors. The elutriation data were not included, because it was not possible to calculate a  $\Phi$  that maximized the values of more than a handful of the known genes. The  $\alpha$  factor and *cdc15* vectors were multiplied by 0.7, so that they would not unduly contribute to the final "aggregate CDC score," which was calculated by taking the magnitude of this final vector.

Genes were ranked by their aggregate CDC scores, and the list was examined to identify the positions of known cell cycle genes within it. We selected a threshold CDC score that was exceeded by 91% of known cell cycle-regulated genes. Altogether 800 genes met or exceeded this CDC score.

### Promoter Analysis

Motifs were identified in the 700 bp upstream of the start codon using a Gibbs sampling strategy. Such a strategy was originally developed by Lawrence *et al.* (1993) to find patterns in protein sequences and later modified by Neuwald *et al.* (1995) to take into account the possibility of a repeated motif. We have modified these Gibbs sampling algorithms to allow pattern searches of DNA (Zhang, unpublished data), for which functions such as double-strand search, palindrome symmetry, and submotif inclusion and exclusion were included. Once motifs were established for a group or cluster, we tested their predictive value by searching for the motif consensus (with specified mismatches) in the 700 bp upstream of the ATG for all groups, as well as for a control set of non-cell cycle-regulated genes, and compared the distribution of these sites in different groups.

### TAQman Assay

The TAQman assay was performed on the same  $\alpha$  factor samples that were used in the microarray hybridization experiments. For each sample, 500 ng of total RNA were incubated for 15 min with 0.1 U/ $\mu$ l DNase I (amplification grade; Life Technologies, Grand Island, NY) in 2 mM MgCl<sub>2</sub>, 50 mM KCl, 20 mM Tris-HCl (pH 8.4). The reaction was stopped by adding EDTA to 2.5 mM and incubating at 65°C for 10 min. The RNA was reverse transcribed using TAQman reverse transcription reagents (PE Applied Biosystems, Foster City, CA) consisting of 2.5  $\mu$ M oligo-dT 16 mer, 1.25 U/ $\mu$ l MultiScribe reverse transcriptase, 0.5 mM dGTP, dATP, dTTP, and dCTP, 0.4 U/ $\mu$ l RNase inhibitor, 50 mM KCl, 10 mM Tris-HCl (pH 8.3). The reaction was incubated at 25°C for 10 min, 48°C for 30 min, and then 95°C for 5 min. The resulting cDNA served as a template for real-time quantitative PCR as follows, in which a fluorescent reporter dye (6-carboxy-fluorescein [FAM]) was released and quantitated during each specific replication of the template (Heid *et al.*, 1996). The cDNA was mixed with 2 $\times$  TAQman universal PCR master mix (PE Applied Biosystems) and then split into separate reaction tubes containing gene-specific forward and reverse primers (900 nM each) and dye-labeled oligonucleotide probes (200 nM). Each resultant PCR (25  $\mu$ l) contained cDNA generated from 5 ng of RNA. The sequences of the primers and probes were the following: *TUB1* primers: forward, 5'-AAAGCCGAAGGGAGGAGAAG-3'; reverse, 5'-CCCTTGAACGAACCTACCGT-3'; *TUB1* probe: 5'(FAM)-CTCCACGTTTTCCATGAAACCGGC-(6-carboxy-tetramethylrhodamine [TAMRA])p3'; *TUB2* primers: forward, 5'-TTGTCCATTCCACGTTTAC-3'; reverse, 5'-GATTGAGAGCCAA-TTGCGT-3'; *TUB2* probe: 5'(FAM)-TTCTTCATGGTTCGGCTAC-GCTCCATT-(TAMRA)p3'; *TUB3* primers: forward, 5'-CCTGCGC-CTCAATTGTCTACT-3'; reverse, 5'-TTCCAGGGTGGTATGCGTG-3'; *TUB3* probe: 5'(FAM)-CGTCGTGGAACCTACAACACG-GTTTAA-(TAMRA)p3'; *PPA1* primers: forward, 5'-TGTCGGTG-

CTTCCAATTGAT-3'; reverse, 5'-CATCGGAAATGGCAGCAGT-3'; and *PPA1* probe: 5'(FAM)-CCGGTGATACCGACAGCGAT-ACCA-(TAMRA)p3'. Each gene-specific PCR was done in triplicate or quadruplicate. The tubes were placed in a PE Applied Biosystems Prism 7700 sequence detection system and were incubated with the following parameters: 50°C for 2 min, 95°C for 10 min, followed by 40 cycles of 95°C for 15 sec and 60°C for 1 min. The computer program Sequence Detector version 1.6.3 (PE Applied Biosystems) provided output, which allowed the average quantities of *TUB* mRNA relative to *PPA1* mRNA to be determined for each RNA sample. The *TUB:PPA1* ratio in the asynchronous sample A1 was arbitrarily set at 1, and the results from the other samples were adjusted accordingly.

## RESULTS

### Experimental Overview

We wished to identify the genes whose RNA levels varied periodically during the cell cycle. We initially obtained microarray data from synchronized cells and suitable controls and analyzed the >400,000 measurements to obtain objective scores based on a Fourier algorithm (which assesses periodicity) and a correlation measurement (which compared our data with those of previously identified cell cycle-regulated genes). We compared scores among the previously known and total gene sets to find a threshold value for deciding the significance of the apparent cell cycle regulation. For completeness, we also reanalyzed the published data of Cho *et al.* (1998). Using all the data, we arrived at a threshold CDC value above which 91% (95 of 104) of the genes previously shown to be cell cycle regulated are included. This procedure identified a total of 800 yeast genes as being periodically regulated.

### Synchronized Cultures

We measured the relative levels of mRNA as a function of time in cell cultures that had been synchronized in three independent ways. First we used  $\alpha$  pheromone to arrest MATa cells in G1. Second, we used centrifugal elutriation to obtain small G1 cells. Finally, we used a temperature-sensitive mutation, *cdc15-2*, which, at the restrictive temperature, arrests cells late in mitosis. We used three methods because each introduces characteristic artifacts. For instance, use of pheromone has regulatory consequences characteristic of mating, whereas use of temperature-sensitive mutants can cause heat shock.

The synchronization experiments differed in major ways. First, they were performed using different carbon sources and at different temperatures, with the consequence that the cells grew at different rates. Second, two different yeast strain backgrounds were used (S288C and W303), and finally, cells were synchronized at different points during the cell cycle. Each method produced significant cell cycle synchrony through one cell cycle (elutriation), two cycles ( $\alpha$  pher-



omone), or three cycles (*cdc15*), as established by at least one of the following methods for each experiment: bud count, DNA content analysis (FACS) and nuclear staining (DAPI), as described in MATERIALS AND METHODS.

RNA was extracted from each of the samples collected, as well as from a control sample (asynchronous cultures of the same cells growing exponentially at the same temperature in the same medium). Fluorescently labeled cDNA was synthesized using Cy3 ("green") for all controls and Cy5 ("red") for all experimental samples. Mixtures of labeled control and experimental cDNAs were competitively hybridized to individual microarrays containing essentially all yeast genes (Derisi *et al.*, 1997). The ratio of experimental (red) to control (green) cDNA was measured by scanning laser microscopy (Shalon *et al.*, 1996).

### *Transcription in Response to the Cyclins Cln3p and Clb2p*

To gain mechanistic insight into the control of the observed cell cycle regulation, we identified genes whose mRNA levels responded to the induction of two well-characterized cell cycle regulators, Cln3p and Clb2p (see Nasmyth, 1993). Late in G1 phase, the Cln3p-Cdc28p protein kinase complex activates two transcription factors, MBF and SBF, and these in turn promote the transcription of a number of genes important for budding and DNA synthesis (Cross, 1995). Later in the cell cycle, the Clb2p-Cdc28p complex represses the activity of SBF, returning the expression of SBF-regulated genes to low levels (Amon *et al.*, 1993). Furthermore, Clb2p-Cdc28p is known to activate expression of at least four genes, *CLB1*, *CLB2*, *SWI5*, and *BUD4* (Althoefer *et al.*, 1995; Sanders and Herskowitz, 1996).

To identify other genes controlled by Cln3p and Clb2p, we arrested *cln<sup>-</sup>* or *clb<sup>-</sup>* cells in late G1 with *cdc34-2* for the *CLN3* experiment and in M with nocodazole for the *CLB2* experiment. We then induced expression of *CLN3* or *CLB2* without inducing cell cycle progression. RNA from the G1-phase cells expressing Cln3p (labeled red) was compared with control RNA (labeled green) from the G1-phase cells arrested in the absence of Cln3p. Similarly, for the *CLB2* experiment, RNA from M-phase cells expressing Clb2p (labeled red) was compared with control RNA (labeled green) from M-phase cells arrested in the absence of Clb2p. In each case, mRNA levels were quantitatively measured by microarray hybridization. In addition, we performed an experiment to test the effects of galactose to an asynchronous culture with no inducible cyclin (see MATERIALS AND METHODS). Genes identified as strongly affected by galactose addition were not considered further in the Gal cyclin experiments.

### *Data Analysis and Availability*

The total data we collected comprise ~400,000 individual ratio measurements. The quality and reliability of the data can only be assessed by unrestricted access to all data in forms suitable for further query or computer analysis. Therefore, in addition to the summary printed here, we provide primary data from two locations on the Internet. The numerical data are provided in a table of the actual ratios measured for each gene, on each array. They can be downloaded as a tab-delimited text file from the journal web site (<http://www.molbiolcell.org>) or from a server at Stanford (<http://cellcycle-www.stanford.edu>). The Stanford web site also provides images of the arrays, accessory data, and the capability to browse and search the complete data set. Raw data are also available from the authors upon request.

The comprehensive nature of this work has another consequence: in what follows we refer by name to as many as 400 genes. It is impractical to provide detailed literature documentation for each gene every time it appears. Instead, we have provided references selectively, and we encourage readers to use the hyperlinks to the *Saccharomyces* Genome Database (<http://genome-www.stanford.edu/Saccharomyces>) and the Yeast Protein Database (<http://quest7.proteome.com/YPDhome.html>) that will be provided at both the *Molecular Biology of the Cell* and Stanford web sites.

### *Identification of Cell Cycle-regulated Transcripts*

Combining the data from the synchronization experiments, we were able to identify 800 genes whose expression is cell cycle regulated. We did this by the combination of a Fourier algorithm and a correlation algorithm as described in MATERIALS AND METHODS. This resulted in a score for each gene that we refer to as the aggregate CDC score. To illustrate this, Table 3 provides some summary statistics and examples of the kinds of scores obtained for several genes (including specific examples that are and are not cell cycle regulated).

In setting the threshold for the aggregate CDC score by our empirical method, we intended to minimize false-positive assessments while including the vast majority of previously characterized genes that are known to have periodic mRNA levels. Many additional genes showed indications of cell cycle regulation (by visual inspection of the data and by quantitation using our algorithm), although we could not objectively distinguish this behavior from noise.

We estimated the false-positive rate in two ways. First, we randomized the data from each experiment (both by gene and by time point) and performed all of the analyses described above. The randomized data produced 24 "genes" (of nearly 6200) with CDC scores that exceed the threshold we used to classify genes as cell cycle regulated. We assume that this represents a

**Table 3.** Example scores and statistics for a collection of genes

Rank by score	Score gene name	Peak to trough
1	15.99 <i>PIR1</i>	27.3
9	10.90 <i>CLN2</i>	12.1
37	8.78 <i>CLB1</i>	9.4
82	6.51 <i>BUD9</i>	7.0
177	4.25 <i>STE3</i>	12.8
224	3.55 <i>TUB4</i>	4.8
255	3.29 <i>DUN1</i>	4.2
401	2.37 <i>CIN8</i>	5.4
407	2.33 <i>TUB2</i>	5.5
585	1.71 <i>MET1</i>	3.0
800	1.314 <i>STP4</i>	5.9
<b>800</b>	<b>1.314 Threshold for inclusion</b>	
844	1.28 <i>SEC8</i>	4.2
861	1.25 <i>TUB1</i>	2.7
1258	0.92 <i>ANP1</i>	3.1
1799	0.71 <i>TUP1</i>	3.0
2499	0.54 <i>TUB3</i>	2.7
2673	0.50 <i>IME2</i>	3.5
6054	0.05 <i>RPS8B</i>	10.9

reasonable estimate of the false-positive rate (i.e., ~3% of all genes identified would be false positives). In a second, more conservative test, we randomized the data set only within genes. The number of genes that had scores above our threshold was about three times higher (75 genes) when we randomly shuffled the data in this way. Thus, the number of false positives (of the 800 genes identified as cell cycle regulated) is likely <10% and perhaps as low as 3%.

#### Classifying the Cell Cycle-regulated Genes by Pattern of Expression

We used two distinct methods to classify genes by their pattern of expression, which we refer to as "phasing" (by time of peak expression) and "clustering" (by similarity of expression across the experiments, which is described below). There is no simple relationship between these two methods, although there are common features in the results. "Phase groups" were created by determining the time of peak expression for each gene (calculated from the Fourier algorithm) and ordering all genes by this time. We divided this ordered set into five (somewhat arbitrary) groups termed G1, S, G2, M, and M/G1 that approximate those commonly used in the literature. To this end we used the published timing of gene expression for the known genes in determining which genes belonged in which phase group. Figure 1A displays the 800 genes that we identified, sorted according to the phase of expression. Each column represents a time point in an experiment, and each row represents a gene that we identified as cell cycle regulated. The ratio of expression that we measured for each gene in each time

point is color coded, reflecting the magnitude of the ratio of expression relative to the average of that gene, with shades of red indicating an increase (on) and shades of green indicating a decrease (off). This display is based on the paradigm of Eisen *et al.* (1998). Genes expressed during each part of the cell cycle are indicated by the color bar (and phase) on the side, and temporal progress through the cell cycle is indicated on the top.

By phasing there were 300 G1 genes (e.g., *CLN2*, *RNR1*, *CDC9*, *RAD27*, *SMC3*, and *MNN1*), 71 S genes (e.g., the histones), 121 G2 genes (e.g., *CLB4*, *WHI3*, and *CIS3*), 195 M genes (e.g., *DBF2*, *CLB2*, *CDC5*, *CDC20*, and *SWI5*), and 113 M/G1 genes (e.g., *ASH1*, *SIC1*, *CDC6*, and *EGT2*). This is a crude classification with many disadvantages (e.g., the last gene in the G2 group and the first gene in the M group are expressed at virtually the same time yet are in different groups), but nevertheless it is useful for discussing the results.

#### Identification of DNA Binding Sites

We searched through the 700 bp immediately upstream of the start codon of each of the 800 genes in our list to identify potential binding sites for known or novel factors that might control expression during the cell cycle. We found that the majority of the genes have good matches to known cell cycle transcription factor binding sites relevant to the time of peak expression. Furthermore, we examined the distribution of these elements within the upstream sequences, and found that both the site and its position relative to the ATG contain information that is predictive of the phase group of the gene. Figure 2 shows the frequency of six sites in promoters of the G1, S, G2, M, and M/G1 phase groups and a control set of non-cell cycle-regulated genes. These sites are the previously published SCB and MCB as well as four extensions and modifications of published sites (MCM1 + SFF, extended SWI5, SCB variant, and degenerate MCB). Full results of all promoter searches are available on our web site.

#### Clusters and Their Regulation

Clusters were established using the clustering algorithm of Eisen *et al.* (1999). This algorithm sorts through all the data to find the pairs of genes that behave most similarly in each experiment and then progressively adds other genes to the initial pairs to form clusters of apparently coregulated genes. As will be discussed below, the clustering algorithm successfully identifies coregulated genes, because analysis of the 5' regions of the genes in a cluster shows that such genes share common promoter elements, many of which are identifiable based on the published literature. Thus, these clusters provide a foundation for understanding the transcriptional mechanisms of cell cycle regulation. Figure 1B shows the entire clustergram of our cell cycle-regulated genes; a larger ver-

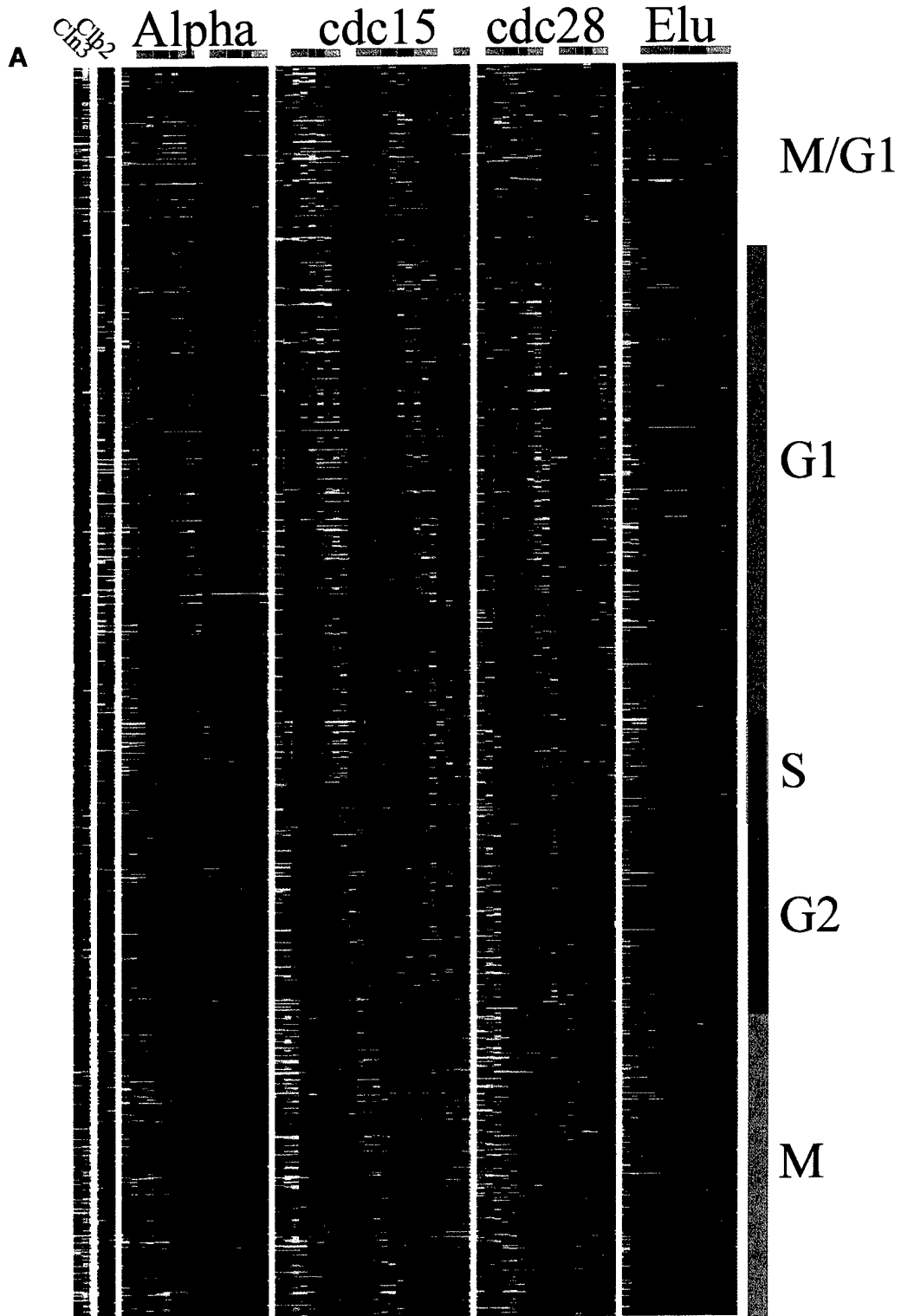


Figure 1.

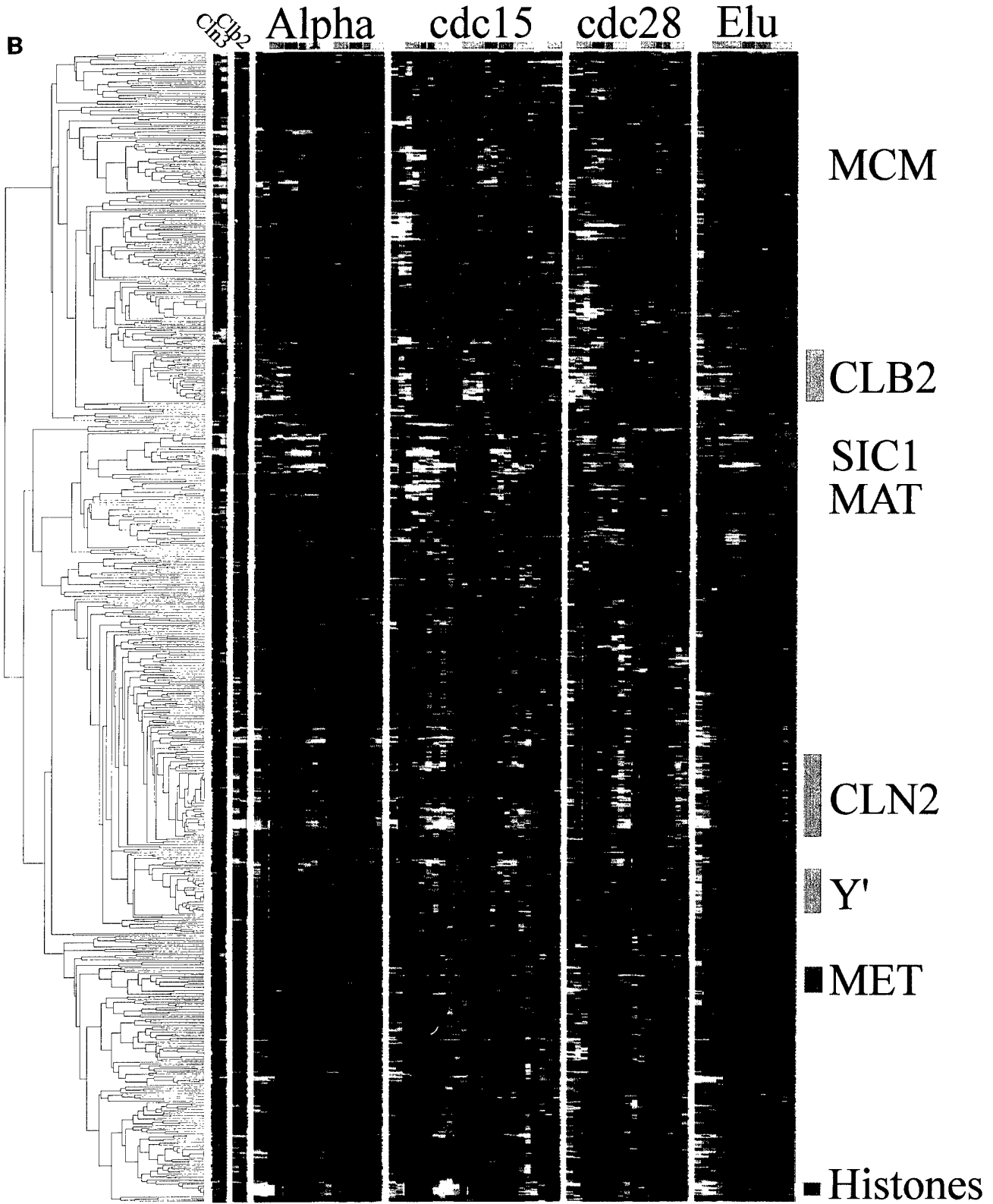
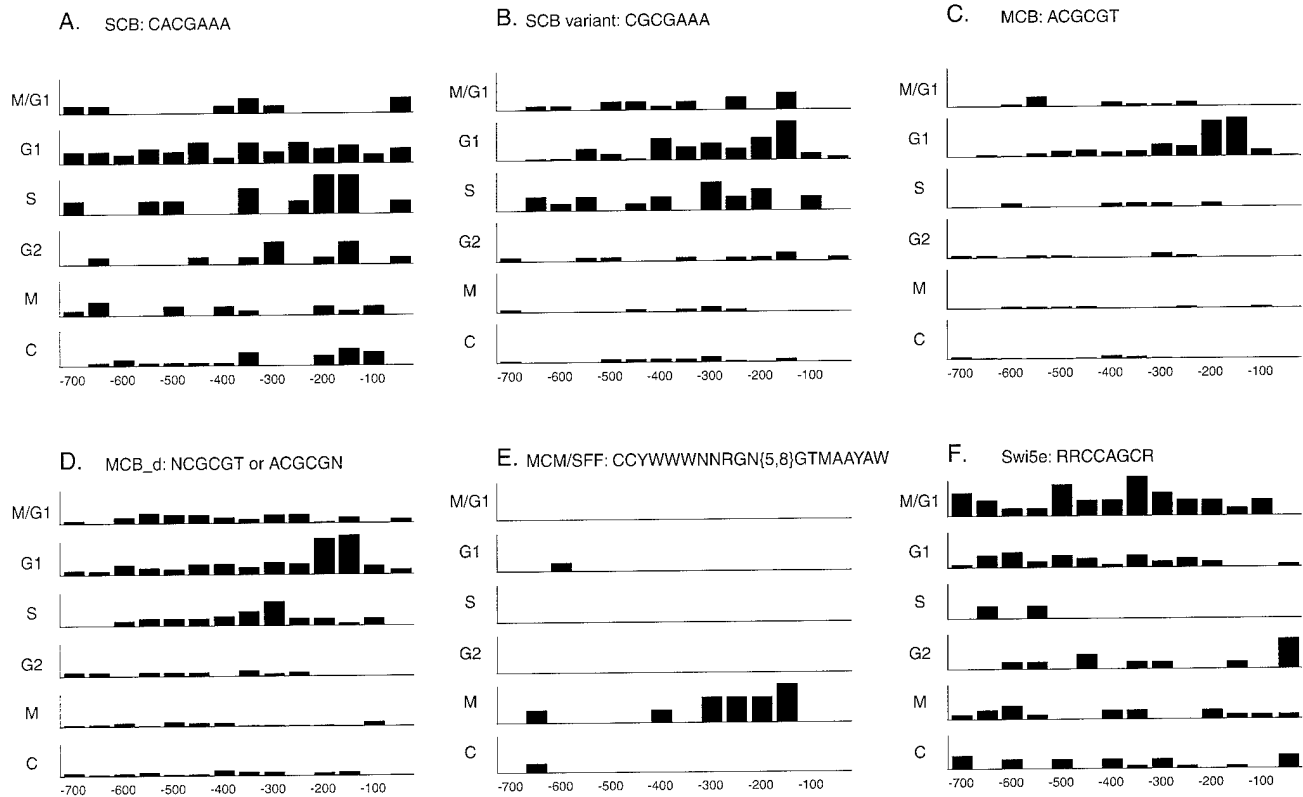


Figure 1. (cont).



**Figure 2.** Binding site frequencies. The distribution of various promoter elements in the upstream regions of each the five cell cycle-regulated groups and a control group of 279 non-cell cycle-regulated genes that do not respond to either *Cln3p* or *Clb2p* induction are graphically displayed. In each case the numbers on the x axes represent distance from the start codon, and the bars represent the frequency of a particular site per residue per gene at that position in the upstream promoter regions. N is any base; Y is C or T; W is A or T; R is A or G; and M is A or C. (A) SCB. (B) A variant on the SCB, which is also similar to an MCB. (C) MCB. (D) MCB<sub>d</sub>, a degenerate MCB sequence. (E) MCM1/SFF site. (F) Swi5e, an extended Swi5 site.

sion with gene names attached is available at our web site. The same color-coded presentation is used, with the addition, on the extreme left, of the similarity tree (dendrogram) calculated by the clustering algorithm. Many portions of the clustergram (subclusters) are

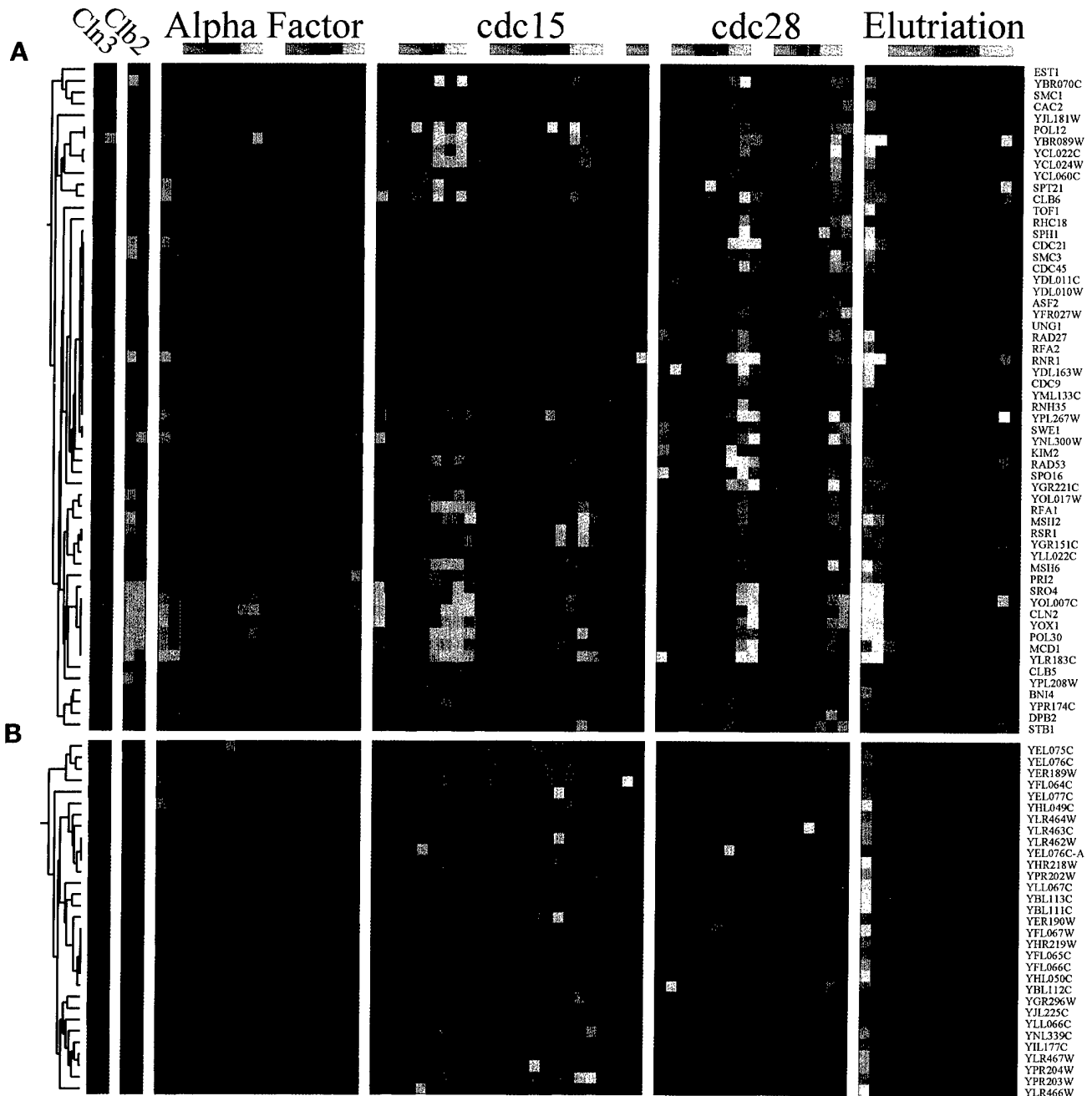
described below, and those that we discuss are summarized in Table 4. The locations of these subclusters in the main cluster are indicated on Figure 1B.

**Figure 1 (cont).** Gene expression during the yeast cell cycle. Genes correspond to the rows, and the time points of each experiment are the columns. The ratio of induction/repression is shown for each gene such that the magnitude is indicated by the intensity of the colors displayed. If the color is black, then the ratio of control to experimental cDNA is equal to 1, whereas the brightest colors (red and green) represent a ratio of 2.8:1. Ratios >2.8 are displayed as the brightest color. In all cases red indicates an increase in mRNA abundance, whereas green indicates a decrease in abundance. Gray areas (when visible) indicate absent data or data of low quality. Color bars on the right indicate the phase group to which a gene belongs (M/G1, yellow; G1, green; S, purple; G2, red; M, orange). These same colors indicate cell cycle phase along the top. (A) Gene expression patterns for cell cycle-regulated genes. The 800 genes are ordered by the times at which they reach peak expression. (B) Genes that share similar expression profiles are grouped by a clustering algorithm as described in the text. The dendrogram on the left shows the structure of the cluster.

**Table 4.** Cluster summary

Cluster	No. of genes	Binding site	Regulator	Peak expression
CLN2	119	ACGCGT	MBF, SBF	G1
Y'	26	Unknown	Unknown	G1
FKS1	92	ACRMSAAA	SBF, (MBF?)	G1
Histone	10	ATGCGAAR	Unknown	S
MET	20	AAACTGTGG	Met31p, Met32p	S
CLB2	35	MCM1 + SFF	Mcm1p + SFF	M
MCM	34	MCM1	Mcm1p	M/G1
SIC1	27	RRCCAGCR	Swi5p/Ace2p	M/G1
Total	363			

The FKS1 set of genes is not a cluster, and the CLN2 cluster includes genes outside the core cluster that is shown. Consensus binding sites defined in the literature for various factors are as follows: MCM1, TTACCNAATTNGGTAA; SFF, GTMAACAA.



**Figure 3.** The G1 clusters. The transcription profiles are displayed as described in the legend to Figure 1. (A) *CLN2* cluster. A fraction of the genes regulated similarly to the G1 cyclin *CLN2*, which reaches peak expression in the G1 phase of the cell cycle. To view the full cluster of all the cell cycle-regulated genes, visit <http://cellcycle-www.stanford.edu>. (B) *Y'* cluster. Thirty-one genes that are located within the *Y'* elements show cell cycle regulation of mRNA levels that peak in G1.

**The G1 Clusters**

The "CLN2" cluster is the largest subcluster and contains 76 genes. Genes in this cluster include *CLN1*, *CLN2*, *CLB6*, *RNR1*, *CDC9*, *CDC21*, *CDC45*, *POL12*, *POL30*, *SWE1*, and many other genes involved in DNA replication. A portion of this cluster

is shown in Figure 3A. The key features of these genes are that expression is strongly cell cycle regulated (i.e., large peak-to-trough ratios); peak expression occurs in mid-G1 phase (~10 min before budding in the *cdc15* experiment); and they are strongly induced by *GAL-CLN3* but are strongly

repressed by *GAL-CLB2*. Fifty-eight percent of the 5' regions of these genes had at least one copy of the motif ACGCGT (vs. 6% of control genes), which is a perfect MCB element. Fifty-two percent had at least one copy of CRCGAAA (vs. 13% of control genes), a degenerate SCB element. In addition, 16 had the motif AGAAGAAA, which is similar to a functionally important sequence found upstream of *CLN3* (AAGAAAA) (Parviz *et al.*, 1998). Finally, 17 had the motif CCACAK, which we do not recognize. Outside the core of this cluster are at least 43 additional genes that are less tightly clustered but nevertheless appear to be coregulated with the *CLN2* cluster (119 total genes).

The "Y" cluster (Figure 3B) contains 31 ORFs that all share DNA sequence similarity. There are 38 ORFs that share this similarity in the genome and we identify 36 of them as cell cycle regulated. All of these 38 ORFs are found in Y' elements, located at chromosomes ends. It should be noted that these results may not represent 36 independent observations, because the cDNAs corresponding to these ORFs are almost certain to cross-hybridize on the microarrays. We do not know how these ORFs are regulated or the functional significance.

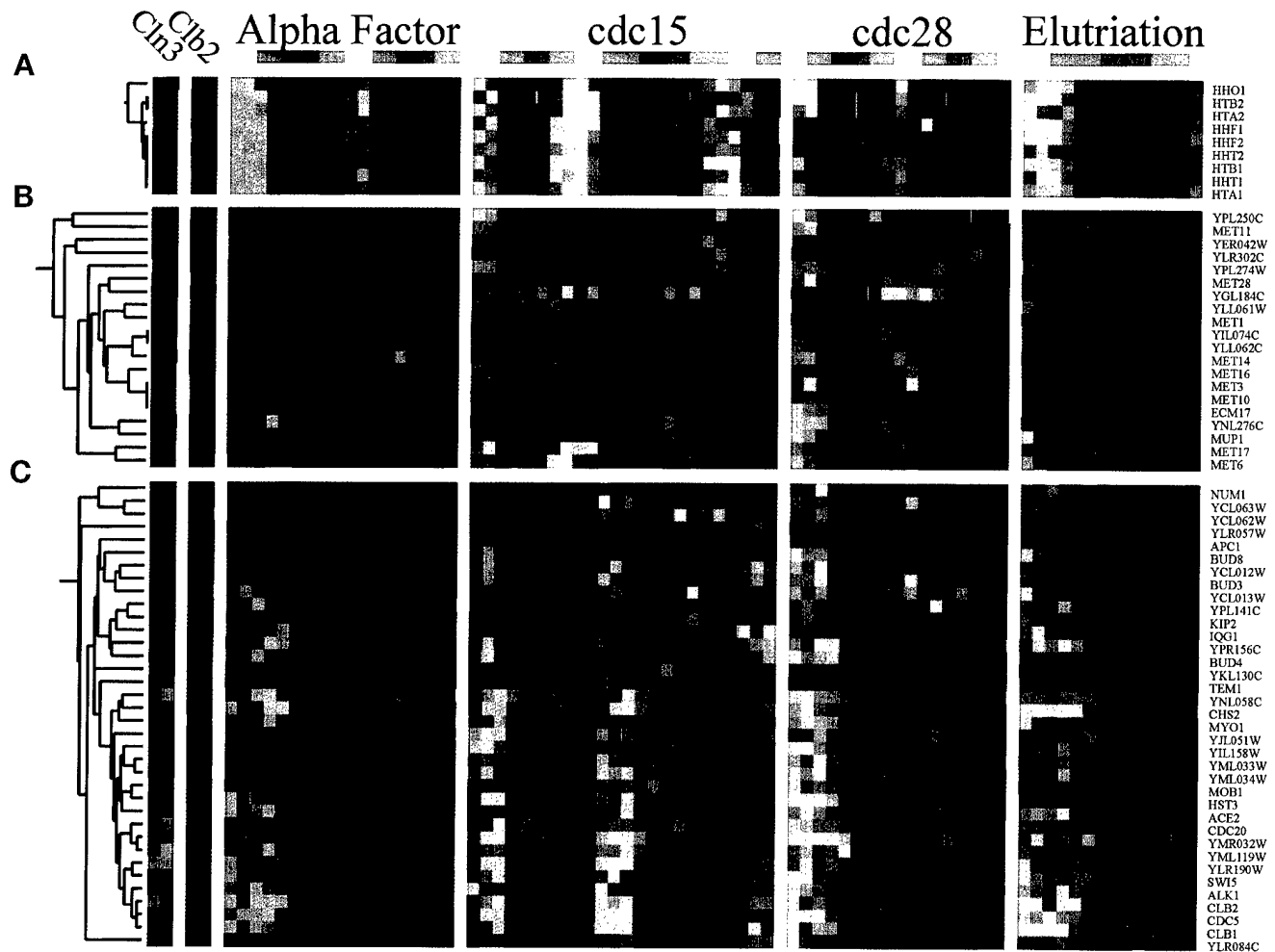
There is a set of 92 genes, containing *ALG7*, *FKS1*, *GAS1*, *GOG5*, *PMT1*, and *PMI40*, as well as other genes involved in cell wall synthesis (Klis, 1994), that are not a cluster on the clustergram but that are substantially coregulated. These genes can be seen on our web site as Figure 3C. Expression is strongly cell cycle regulated, and peak expression is nearly coincident with budding (~10 min later than the *CLN2* cluster in the *cdc15* experiment). These genes are induced by *GAL-CLN3* and repressed by *GAL-CLB2*. The majority of these genes had the motif ACRMSAAA (where R is A or G, M is A or C, and S is C or G), which may be an extension and variation of the SCB motif (CACGAAA). Comparison of the *CLN2* cluster with this set suggests that expression from MCB motifs may be activated somewhat before expression from SCB motifs, but both kinds of expression are induced by *CLN3* (consistent with previous studies) and repressed by *CLB2*. Earlier studies demonstrated that repression of SCB-driven expression requires *CLB2*, whereas repression of MCB-driven expression did not (Amon *et al.*, 1993). Our results extend this by showing that *CLB2* can repress MCB-driven expression, even though there may be additional repressive mechanisms. Many of the genes in this set also had the motif AARAARAAG, which is similar to a motif found in the *CLN2* cluster (see above). However, because promoters generally are rich in such sequences, the significance of this motif is unclear.

### The S and M Clusters

The histone cluster in Figure 4A forms the tightest cluster of any of the cell cycle genes. These nine genes have very high peak-to-trough ratios and give aggregate scores of ~10. The histones have three known modes of regulation: first, there are negative elements repressing transcription; second, there is an element in the 3' region of the mRNAs that destabilizes the message except during S phase; and third, there is a repeated positive element, which activates transcription (Freeman *et al.*, 1992). Part of the core motif of the positive element is ATGCGAAR, which is similar to our degenerate SCB motif (ACRMSAAA). Consistent with this, histone expression is induced by *GAL-CLN3*. However it has been shown that the level and periodicity of *HTA2/HTB2* mRNA accumulation are not noticeably affected by single mutation of *SWI4*, *SWI6*, or *MBP1* (Lowndes *et al.*, 1992; Cross *et al.*, 1994). Additionally, histone levels are unaffected by *GAL-CLB2*. The sharpness of the peak in histone regulation is worth noting, both because it gives a good impression of the degree of synchronization and because the histones were the first genes for which periodic regulation was discovered (Hereford *et al.*, 1981).

The "MET" cluster (20 genes, Figure 4B) was completely unexpected. It contains 10 genes involved in the biosynthesis of methionine. Furthermore, two of the unnamed genes in this cluster show sequence similarity to human methionine synthetase, two are likely to be amino acid transporters (with unidentified specificities), one is similar to *MET17*, and one is on the opposite strand of *MET2*. Finally, *ECM17*, the only previously characterized gene in the cluster that is not known to be part of the methionine biosynthetic pathway, is similar to a sulfite reductase from human. Thus, nearly all of the genes in this cluster are likely to be involved in methionine metabolism. Expression of the genes in this cluster peaks just after the histones, and at least some are inducible by *CLN3*. We searched the upstream region of the genes in the MET cluster and found that 15 of the genes had the consensus AAACGTGG, which is identical to the consensus found for Met31/Met32 binding (Blaiseau *et al.*, 1997).

The "CLB2" cluster (Figure 4C) contains 35 genes and includes many genes involved in mitosis such as *CLB2*, *CDC5*, *CDC20*, and *SWI5*. There are also many other less tightly clustered genes that appear to be regulated in a similar manner, including *WSC4*, *PMP1*, and the major plasma membrane proton pumps *PMA1* and *PMA2*. The *CLB2* cluster is highly regulated with a peak in M, and the genes are very strongly induced by *GAL-CLB2*, whereas *GAL-CLN3* appears somewhat repressive. It was previously known that four of the genes found in this cluster, *CLB1*, *CLB2*, *SWI5*, and *BUD4*, are regulated by a combination of two transcription factors, Mcm1p and



**Figure 4.** The S and M clusters. The transcription profiles are displayed as described in the legend to Figure 1. (A) Histone cluster. The eight genes encoding histones and the yeast histone H1 homologue cluster very tightly and are expressed during S phase of the yeast cell cycle. (B) MET cluster. The expression of many of the members of the methionine pathway peaks just after the histones. (C) CLB2 cluster. A subcluster of genes that are expressed similarly to *CLB2* highlights genes that peak during M phase.

SFF (Althoefer *et al.*, 1995; Sanders and Herskowitz, 1996). Mcm1p binds to the consensus TTACCNAAT-TNGGTAA (Acton *et al.*, 1997), whereas, on the basis of three of these genes, SFF was thought to bind to the consensus sequence GTMAACAA. Furthermore, transcription of *CLB1*, *CLB2*, and *SWI5* was known to be induced by Clb2p activity, possibly because of post-translational activation of SFF (Amon *et al.*, 1993). We compared the upstream regions of genes in the *CLB2* cluster and certain other coregulated genes (e.g., *ASE1*, also thought to be a possible target of SFF [Pellman *et al.*, 1995]) and found that most of them contain an easily recognizable MCM1 + SFF motif. Of the 35 genes in the cluster, only 9 genes (*KIP2*, *MOB1*, *NUM1*, *YCL012W*, *BUD3*, *CHAI*, *YCL063W*, *YLR057W*, and *YML033W*) did not have an easily recognizable near match to the MCM1 +

SFF consensus. An alignment of the genes that contained this site can be viewed on our web site, and on the basis of this alignment, we deduce a new consensus for MCM1 + SFF binding, shown in Figure 5.

#### The M/G1 Clusters

The "MCM" cluster (Figure 6A) contains 34 genes, including all six MCM genes that are directly involved in DNA replication (*MCM2*, *MCM3*, *CDC54*, *CDC46*, *MCM6*, and *CDC47*; reviewed by Chevalier and Blow, 1996) as well as *FAR1*, *DBF2*, *SPO12*, and *KIN3*. These genes peak late in the cycle, at about the M/G1 boundary, and are induced by *CLB2* and somewhat repressed by *CLN3*. This cluster has similarities to the *CLB2* cluster, except that peak expression is slightly later. Searches of



	1	2	3	4	5	6	7	8	9	10	11	12	13	14	15	16	17	18	19	20	21	22	23	24	25	26	27
T	23	23	17	3	2	13	2	6	16	13	7	0	1	7	3	1	11	11	8	3	25	3	2	0	15	0	4
A	5	5	11	0	0	5	25	26	18	8	17	2	0	21	32	33	21	22	7	8	6	24	33	34	0	34	26
C	4	4	0	32	33	14	2	1	1	7	3	0	0	4	0	1	0	0	7	4	2	8	0	0	20	0	1
G	3	3	7	0	1	3	6	2	0	7	8	33	34	3	0	0	3	2	5	20	2	0	0	1	0	1	4
	T	T	W	C	C	Y	A	A	W	N	N	G	G	W	A	A	W	W	N	R	T	A	A	A	Y	A	A

**Figure 5.** The MCM1 + SFF consensus. By aligning promoter elements of several coregulated genes found in the *CLB2* cluster (see our web site for the alignment), we developed a matrix for a new MCM1 + SFF consensus. The number of times each base was found at each position in the site was tallied and is displayed. The consensus was determined by examining the nucleotide frequencies at each position.

the upstream regions reveal that the majority of these genes contain binding sites for Mcm1p, as was previously shown for some members of the cluster (McInerney *et al.*, 1997). Some, but not all, of these MCM1 sites have nearby sites for SFF (e.g., in *FAR1*, *SPO12*, *KIN3*, and *CDC47*), although these presumptive SFF sites are of varying quality. It has been suggested that some of the genes in this cluster are regulated through the "ECB," a variant of the Mcm1p binding site (McInerney *et al.*, 1997).

The "SIC1" cluster comprises 27 genes, including *EGT2*, *PCL9*, *TEC1*, *ASH1*, *SIC1*, and *CTS1*. These genes are strongly cell cycle regulated (Figure 6B) and peak in late M or at the M/G1 boundary. *GAL-CLN3* may repress some of these genes, whereas *GAL-CLB2* has no consistent effect on the expression of these genes. Several of these genes are known to be regulated by the transcription factor Swi5p, which itself is a member of the *CLB2* cluster (Dohrmann *et al.*, 1992; Bobola *et al.*, 1996; Knapp *et al.*, 1996). Swi5p is thought to bind to a site with the consensus ACCAGC (Knapp *et al.*, 1996), and indeed, when we searched for common motifs in the 5' regions of the *SIC1* cluster, we found the consensus RRCCAGCR in many of the 27 genes. When all cell cycle-regulated genes were examined for the presence of either the original Swi5p consensus, or this new extended consensus, the extended consensus was found to be much more specific for late M-phase genes. This comparison is shown on our web site. The motif GCSCRGC was also found in ~40% of the genes in this cluster.

The "MAT" cluster contains 13 genes and is shown in Figure 6C. Some of these genes (*MF $\alpha$ 1*, *MF $\alpha$ 2*, and *STE3*) are specific for MAT $\alpha$  cells (Jarvis *et al.*, 1988) and so are significantly expressed only in the *cdc15* experiment, which was done with a MAT $\alpha$  strain. Other genes in the cluster (*KAR4*, *AGA1*, *SST2*, and *FUS1*) are induced by  $\alpha$  factor and so are very strongly expressed at the beginning of the  $\alpha$  factor experiment. However, these four genes oscillate in the other experiments when no  $\alpha$  factor is present. We found MCM1 binding sites in the upstream regions of several of these genes, including *MF $\alpha$ 1* and *MF $\alpha$ 2*. Furthermore, as discussed below, we found MAT $\alpha$ 1, the transcription factor that cooperates with Mcm1p to induce

$\alpha$ -specific genes, is itself cell cycle regulated, and this may largely explain the oscillation of the  $\alpha$  specific genes in this cluster.

#### Other Genes and Regulators

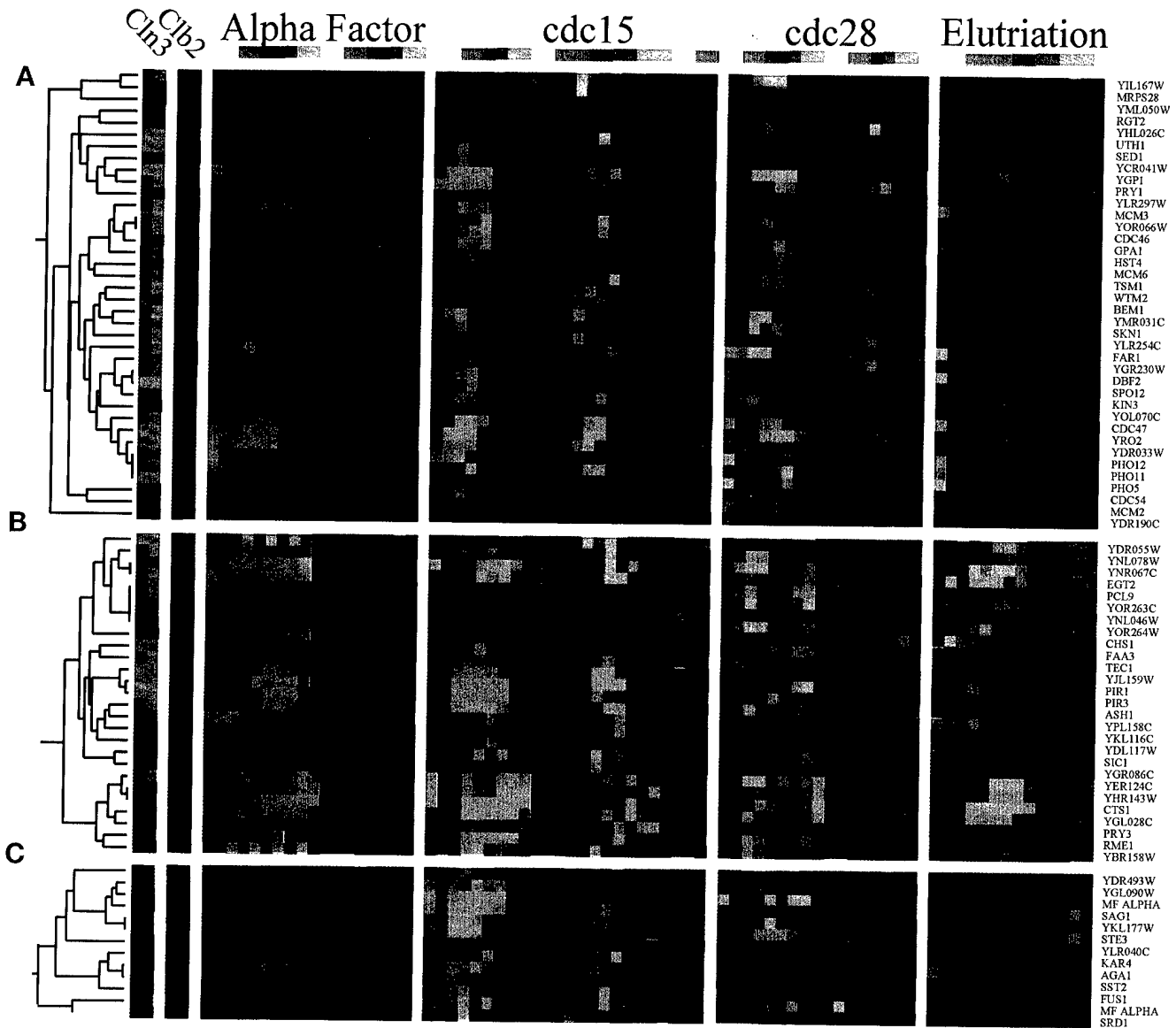
The nine clusters or near clusters summarized in Table 4 account for about half of the cell cycle-regulated genes. The remaining genes tend to be less strongly cell cycle regulated and cluster less tightly. We have attempted to find novel elements in the promoters of the remaining genes without great success. The best of these elements was the consensus GCAGNRNCCW, which we found in the upstream regions of *CLB4*, *BUD3*, *CPR8*, *PRO2*, *YCL012W*, *YCL063W*, *YGL217C*, *YNL043C*, *YDR130C*, and *YOL030W*; these genes appear to be moderately well coregulated (peak expression occurs in G2). There may be additional, novel, upstream elements that we are unable to find.

It is likely that many of the remaining genes are actually coregulated with members of the clusters we have described, and their transcription may be controlled by the same types of elements. Indeed, we know that some of the remaining genes have recognizable elements (e.g., MCBs and SCBs), whereas in other cases, the elements may be highly degenerate versions of the known elements. This may explain why the cell cycle regulation we observe is relatively weak and why the genes do not cluster tightly. Finally, mRNA levels could oscillate, not because of transcriptional control, but because of cell cycle control of mRNA stability; the histone mRNAs are controlled partly in this way (Wang *et al.*, 1996).

For the clusters we have identified, some of the genes in the cluster do not contain an obvious element; for instance, nine of the genes in the *CLB2* cluster do not contain an obvious MCM1 + SFF site. We do not know whether these genes contain cryptic, degenerate sites that our algorithms fail to recognize, or whether these genes are regulated by an unknown factor.

#### The Functions of the Cell Cycle-regulated Genes

The major functions of the cell cycle regulated genes we identified are cell cycle control, DNA replication, DNA repair, budding, glycosylation, nuclear division and mi-



**Figure 6.** The M/G1 clusters. The transcription profiles are displayed as described in the legend to Figure 1. (A) MCM cluster. The MCM genes are involved in initiation of DNA replication and are coregulated during the M/G1 transition of the cell cycle. (B) *SIC1* cluster. Twenty-seven genes that peak at the M/G1 boundary form a subcluster. (C) MAT cluster. This is a cluster of 13 coregulated genes expressed at the M/G1 boundary, many of which are involved in mating.

tosis, structure of the cytoskeleton, and mating. In Figure 7 we arrange 294 named genes in our set, according to both a functional class and the phase group to which they belong.

#### *DNA Replication, Repair, and Chromosome Assembly*

It is instructive to look at the pattern of expression of genes involved in a particular process. For instance, we can trace the expression of many genes somehow involved in DNA replication (as shown in Figure 7). Of the

genes that peak in G1 there are 23 genes with known functions in DNA replication. These genes include subunits of the DNA polymerases and their accessory factors (e.g. *CDC2*, *POL1*, and *POL2*), genes involved in nucleotide synthesis (e.g. *CDC21*), and genes involved in initiation of DNA synthesis (e.g. *CDC45*). Many genes involved in DNA repair such as *PMS1* and *MSH2* reach peak expression in G1 phase, suggesting that repair of DNA lesions may be a normal part of S phase.

Later, when S phase is actually occurring, the histone genes reach peak expression. In late M phase or

Figure 7		G1	S	G2	M	M/G1	
DNA	repair	DHS1 PMS1 RAD54 DUN1 RAD27 RDH54 MSH2 RAD5 RHC18 MSH6 RAD51 UNG1 OGG1 RAD53	HPR5	MEC3	ALK1		
	DNA Syn	CDC2 POL12 RFC4 CDC9 POL30 RFC5 CTF18 HYS2 TEL2 CTF4 POL32 TOF1 DPB2 PRI2 TOP3 EST1 RFA1 YNK1 POL1 RFA2 POL2 RFA3	TOF2				
	Replication Init.	CDC45		ORC1	CDC47 MCM2 CDC54 MCM6	CDC6 MCM3 CDC46	
	Chromatin	ASF1 MIF2 ASF2 RLF2 CAC2 SPT16 CBF2 ESC4 HIF1	ADA2 HTA1 HHF1 HTA2 HHF2 HTA3 HHO1 HTB1 HHT1 HTB2 HHT2	RAP1 SAS3 TBF1	HST3 WTM2	HST4 WTM1	
	Nucleotide Syn.	CDC21 RNR1 RNR3					
	Budding	Site Selection/ Morphogenesis	BNI4 GIN4 SPH1 BUD9 MCD4 SRO4 CDC10 MSB2 GIC2 RSR1	DFG5 GIC1 MSB1	BUD3 MSB4	BEM1 BUD4 BUD8	RGA1
		Glycosylation	MNN1 PMT3 QRI1 OCH1 PMT5 SVS1 PMT1 PSA1 SSO1	GDA1 GOG6 PMI40	ALG7		
		Secretion	EMP24 SLY41 SEC28 UFE1	ERV25	SSO2		GYP6
	Cell Wall Synthesis		CWH41 GAS1 EXG1 FKS1	ECM17 KRE6 ECM25 WSC2 EXG2	CHS6 CWP1 CWP2	CHS2 WSC4 SED1 SKN1	CHS1 TIP1 GFA1 YGP1 SKT5
		Cytokinesis	CSI2 CTS1			CYK2 MYO1 IQG1	EGT2
Fatty Acids/ Lipid/Sterols/ Membranes		EPT1 SUR1 LPP1 SUR2 PSD1 SUR4		AUR1 ERG3 LCB3	ERG2 PMA2 ERG5 PMP1 PMA1	ELO1 FAA4 FAA1 FAS1 FAA3	
Mitosis	Spindle Pole Body	CNM67 SPC42 SPC98 NUF1 SPC97 TUB4	YKR037C (SPC34)		NUF2		
	Microtubules	BIM1 KAR3 BUB1 SLK19 IPL1	CIN8 STU2 KAR9 VIK1 KIP1	BUB2 KIP3 CIK1 NUM1 KIP2 TUB2	ASE1		
	Chromatid Cohes.	SMC1 MCD1 PDS5 SMC3 PDS1					
	Mitotic Exit			DBF20	APC1 MOB1 CDC5 SPO12 CDC20 TEM1 DBF2	SIC1	
	Mating/ Mating Type	HO JEM1 MF $\alpha$ 2 MFA1 PEA2			Alpha1 FAR1 MFA2 SHE2 STE2 STE6	AFR1 KAR4 AGA1 MDG1 AGA2 MF $\alpha$ 1 ASH1 SAG1 FUS1 SST2 GPA1 STE3	
Cell Cycle Control	CLB5 CLN2 PCL2 CLB6 HSL1 RME1 CLN1 PCL1 SWE1		CLB4 HSL7 WHI3	ACE2 CLN3 CLB1 SWI5 CLB2	PCL9 SWI4		
Methionine	MUP1	MET1 MET13 MET6 MET14 MET10 MET28	MET16 SAM1 MET17 MET3				
Nutrition	BAT2 PHO8		AGP1 BAT1 GAP1	DIP5 PHO12 FET3 PHO84 FTR1 RGT2 MEP3 SUC2 PFK1 SUT1 PHO3 VAP1 PHO5 VCX1 PHO11 ZRT1	AUA1 GLK1 HXT2 HXT2 HXT4 HXT7		
Sporulation	PCH1 SPO16		HOP1	HDR1 SPS4	SSP2		
Pseudohyphae			ELM1	PHD1	TEC1		

Figure 7.

M/G1 all six MCM genes important for prereplicative complex formation (*MCM2*, *MCM3*, *CDC54*, *CDC47*, *MCM6*, *CDC47*, and *CDC54*) and *CDC6* reach their peaks, presumably to help set up origins for the next cell cycle. Thus, many genes needed for replication and repair reach peak expression just before they are needed, the histones peak exactly at the time they are needed, and a few genes important for regulation of DNA synthesis peak well in advance of the next round of S phase. Only two known initiator genes, *CDC45* and *DBF4* (which we did not identify in our analysis; see below) peak just before S phase, suggesting these may be particularly important to trigger replication.

### Bud Initiation and Bud Growth

Budding is a major metabolic activity for the cell and involves several subprocesses. The cell must choose a site for the new bud (initiation) and make components for an ever-increasing surface area consisting of a new cell membrane (which requires lipids and integral membrane proteins) and a new cell wall (composed largely of glucan, chitin, and mannoproteins). All of these processes require delivery of components, via the secretory apparatus, to the sites of new membrane and cell wall synthesis, which, in normal conditions, occurs exclusively in the bud (Kaiser *et al.*, 1997; for reviews, see Lew *et al.*, 1997; Orlean, 1997).

We found 17 genes that involved in bud site selection and cell polarization (e.g., *BUD3*, *BUD4*, *BUD8*, *BUD9*, *BEM1*, *GIC1*, *MSB1*, and *MSB2*). As indicated in Figure 7, none of these genes had been reported to be cell cycle regulated. Some of these (*BUD9*, *CDC10*, and *RSR1*) show peak expression in G1, consistent with roles in bud initiation. Others, (*BUD4*, *BUD8*, and *BEM1*) peak in M phase, suggesting roles in the following cell cycle, i.e., earlier in the budding pathway than the G1 group. We also identified many genes needed for secretion, glycosylation (needed for making mannoproteins), synthesis of lipids, and cell wall synthesis.

### Cell Division and Mitosis

Another fundamental process of cell division, in which a large number of the genes involved have their messages regulated by the cell cycle, is the process of mitosis (for review of microtubule-related topics, see Botstein *et al.*, 1997). During the cell cycle many events occur that allow mitosis to progress in a timely manner. This process begins in G1 when the spindle pole

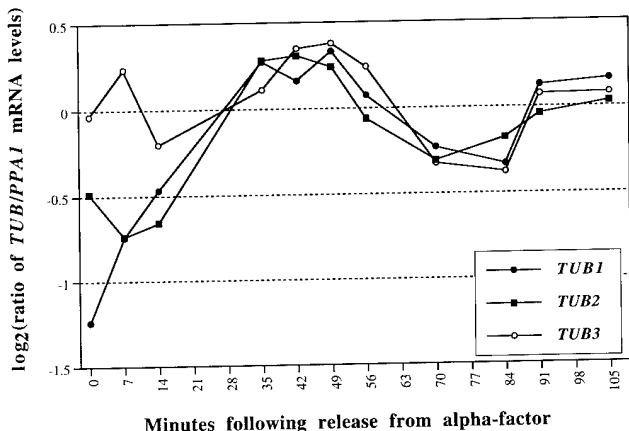
body (SPB) replicates. To facilitate this process six known components of the SPB reach peak expression in G1 (*CNM67*, *NUF1*, *SPC42*, *SPC97*, *SPC98*, and *TUB4*), one (*SPC34*) peaks during S, and one (*NUF2*) peaks during M phase. Some of these genes were already known to be cell cycle regulated (*NUF1*, and *SPC42*) (Kilmartin *et al.*, 1993; Donaldson and Kilmartin 1996).

Once the mitotic program is entered the cell must create a spindle, which is responsible for moving the nucleus to the bud neck so that nuclear division can occur. This process requires microtubules and many accessory proteins (to form the spindle) as well as kinesins (for movements of the nucleus and the SPB). These genes reach peak expression largely during the first half of the cell cycle. In G1 *BIM1*, *BUB1*, *IPL1*, *KAR3*, and *SLK19* reach peak expression, and during S, five genes (*CIN8*, *KAR9*, *KIP1*, *STU2*, and *VIK1*) peak. Five genes peak during G2 (*BUB2*, *CIK1*, *KIP2*, *KIP3*, and *NUM1*), as well as the major  $\beta$  tubulin *TUB2*. Finally, one gene (*ASE1*) reaches peak expression during M.

It was somewhat unexpected that tubulin messages would be regulated by the cell cycle; unfortunately the microarrays that we used for the  $\alpha$  factor and elutriation experiments did not contain DNA complementary to either the major (*TUB1*) or minor (*TUB3*)  $\alpha$  tubulins. Our data set suggested that that *TUB1* might be cell cycle regulated because it had a score just below our cutoff. We wished to verify that the major tubulins were regulated in the cell cycle by an independent method (quantitative real-time PCR [Heid *et al.*, 1996]). This method allows determinations of relative mRNA levels with excellent reproducibility. We performed the analysis as detailed in MATERIALS AND METHODS with the result that, as we suspected, *TUB1* and *TUB2* are moderately cell cycle regulated, but *TUB3* appears less so (Figure 8). This suggests that the low score for *TUB1* may have been caused by their absence from some of the arrays. It should be noted that *TUB2* with a score of 2.33 is clearly above the threshold we set for cell cycle regulation, but that *TUB1* with a score of 1.25 is just below, and *TUB3* (score 0.53) is considerably below the threshold. Comparison with Figure 8 illustrates the point that a score near the threshold can be the result either of inadequate data or weak regulation.

One relatively small class of genes that displays tight temporal regulation is a group of genes involved in chromatid cohesion. Five of these genes (*SMC1*,

**Figure 7 (facing page).** Cell cycle-regulated genes with characterized functions. Two hundred ninety-seven of the cell cycle-regulated genes are grouped by both function and phase of peak expression. Several functional groups are split into subgroups, which reflect the nature of the function. Those highlighted in red were previously known to be cell cycle regulated. Many functional categories display strong biases toward gene expression during particular intervals of the cell cycle. Obvious examples include genes involved in DNA synthesis and DNA repair (G1), mating (M, M/G1, and G1), chromatin structure (G1 and S), and methionine biosynthesis (S and G2).



**Figure 8.** Tubulin message levels. The mRNA levels for *TUB1*, *TUB2*, and *TUB3*, relative to those of *PPA1*, were determined during synchronous division after release from an  $\alpha$  factor arrest, using the TAQman assay as described in MATERIALS AND METHODS.

*SMC3*, *MCD1*, *PDS1*, and *PDS5* [Strunnikov *et al.*, 1993; Yamamoto *et al.*, 1996; Guacci *et al.*, 1997; Michaelis *et al.*, 1997]) have peak expression during G1 just before the next round of DNA synthesis.

At the end of the cell cycle the cell must exit mitosis so that the next round of division can occur. To do this, a system of proteins acts to inhibit the activity of Clb-Cdc28p. One of these proteins is Sic1p, whose expression is known to peak at this time (Donovan *et al.*, 1994). Many of the proteins that inhibit Clb-Cdc28p or prepare the cell to exit from mitosis are known to be cell cycle regulated and peak in M phase. We also find that *DBF20* (which is functionally related to *DBF2*) is cell cycle regulated and peaks in G2.

### Mating

At least 19 genes directly involved in mating are cell cycle regulated. These include both mating pheromones ( $\alpha$ -factor and  $\alpha$ -factor) and, perhaps most interestingly, include the central mating-type transcription factor *MAT $\alpha$ 1* itself. *MAT $\alpha$ 1* binds to DNA in cooperation with *Mcm1* (Sengupta and Cochran, 1991) and induces expression of  $\alpha$ -specific genes. It was previously shown that some genes involved in mating were cell cycle regulated, and this regulation was shown to be due to cooperative binding between *Mcm1* and *Ste12*. The fact that the *MAT $\alpha$ 1* transcription factor itself oscillates provides yet another mechanism by which genes involved in mating might be cell cycle regulated. We found *Mcm1* sites in the upstream regions of several of these genes, including *MAT $\alpha$ 1*. The regulation of genes involved in mating is clearly complex, and several transcription factors are involved. However, it seems that most of these transcription factors cooperate in one way or another with *Mcm1*.

The fact that so many mating functions are cell cycle regulated, including an  $\alpha$ -specific transcription factor, helps explain the deep connection between mating, start, and the cell cycle. For instance, if genes involved in mating are turned off at start by multiple mechanisms, it helps explain how passage through start precludes mating.

### Cell Cycle Control Genes

Of the 19 genes involved in cell cycle control we identified, 17 were already known to be cell cycle regulated. This set mainly includes cyclins and transcription factors, whose activities and time of action are well documented (see Koch and Nasmyth, 1994; Andrews and Measday, 1998). The only two cell cycle control genes that we identified newly as regulated were *WHI3* and *HSL7*.

### Methionine Biosynthesis

It was an unexpected and somewhat surprising result that many genes involved in methionine biosynthesis are cell cycle regulated. A number of possibilities suggest themselves. First, the pool of available cellular methionine is smaller than virtually any other amino acid; thus, methionine is likely to be limiting (Jones and Fink, 1982). Indeed, Unger and Hartwell (1976) noted that starvation for sulfur or for methionine effectively causes G1 arrest, suggesting that cell cycle progression is particularly sensitive to the availability of methionine. They also found that a temperature-sensitive allele of methionine tRNA synthetase causes G1 arrest, even in the presence of methionine. These observations suggest that the cell cycle regulation of methionine genes ensures sufficient capacity for protein synthesis in that biosynthetic pathway for the next cell cycle; if there are insufficient resources, G1 arrest ensues.

It is known that the more than 20 genes that constitute the sulfur amino acid biosynthesis pathway are coordinately regulated at the level of transcription. This transcription is repressed in response to an increase in the intracellular concentration of *S*-adenosylmethionine, an end product of the pathway (methionyl tRNA is another end product) (Thomas *et al.*, 1989). A second possibility therefore is that the concentration of *S*-adenosylmethionine is depleted as cells enter S phase, causing derepression of these genes, which results in cell cycle regulation.

A third possibility is that the protein that actually represses these genes, *Met30p*, is available in limiting amounts and for some reason is titrated during or just before S phase, causing coordinate derepression of this set of genes. Data supporting this idea are that *Met30p* is involved in cell cycle regulation as an F-box protein that targets *Swe1* for degradation (Kaiser *et al.*, 1998; Patton *et al.*, 1998). *SWE1* transcription is cell

cycle regulated (Ma *et al.*, 1996) (our analyses recapitulate this observation), peaking at the G1/S phase boundary. Therefore, the concentration of a known Met30p substrate increases just before the derepression of genes involved in methionine biosynthesis that Met30p is known to repress. Thus, Met30p may become limiting, allowing expression of the MET genes. We do not know whether the cell cycle regulation of these genes is important for their function.

Interestingly, another F-box protein, Grr1, which is also involved in cell cycle regulation, regulates the expression of the *HXT* genes (hexose transporters). The *HXT* genes are members of a cluster of very weakly cell cycle-regulated genes peaking in M/G1 that also includes *PHD1* and *RGA1* (visible in Figure 1B on our web site). Thus, two different F-box proteins involved in cell cycle control also regulate genes involved in providing nutrients, and these nutrient-related genes are weakly cell cycle regulated. It is possible that these F-box proteins somehow coordinate nutrient availability with the cell cycle.

#### Other Nutritional Genes

A very large fraction of the genes involved in nutrition that are cell cycle regulated are involved in transport of essential minerals and organic compounds across the cell membrane. Some of the compounds that are moved by these transporters are amino acids (*GAP1*), ammonia (*AUA1* and *MEP3*), sugars (e.g., *HXT1* and *RGT2*), and iron (*FET3* and *FTR1*). We also identified the acid phosphatases (e.g., *PHO3* and *PHO8*). Nearly all of these genes reach peak expression late in the cell cycle during M and M/G1.

#### Developmental Pathway Genes: Sporulation and Pseudohyphal Growth

A number of genes associated with functions in specialized developmental pathways show cell cycle regulation. These include the apparently sporulation-specific genes *SPS4* and *SSP2*, which have peak expression in M and M/G1, respectively. These might represent cases such as *SPO12*, which has known function in both mitotic and meiotic pathways (Klapholz and Esposito, 1980; Toyn and Johnston, 1993).

#### The Y' Genes

Although not strictly a functional category, the Y' genes form an interesting group of coregulated genes. The Y' sequences are repeated sequences found just centromere proximal to the telomere itself on many chromosomes. Within the Y' elements are two open reading frames, and there are appropriate splicing signals that suggest that they form one large product, although it has not been shown experimentally that these sites are functional (Louis and Haber, 1992;

Louis, 1995). The larger (telomere proximal) of these two ORFs shows similarity to RNA helicases, containing all the motifs known to be necessary for helicase activity (Louis and Haber, 1992). However, sequence similarities among these ORFs are very high, and we cannot distinguish whether one, a few, or all of these elements are cell cycle regulated.

#### The GAL-CLN3 and GAL-CLB2 Experiments

Our experiments to investigate the transcriptional effects of Cln3p and Clb2p provide an excellent corroborative data set that supports cell cycle regulation for more half of the genes in our list. Of the genes that are cell cycle regulated, there are 116 genes that are induced more than twofold by Cln3p, and are repressed by Clb2p. Eighty-seven percent of these peak in either G1 or S phase. In contrast there are only eight cell cycle-regulated genes that are induced by Cln3p and not repressed by Clb2p. There are 33 genes induced greater than twofold by Clb2p that are repressed by Cln3p, whereas only five genes induced by Clb2 are not repressed by Cln3p. All cell cycle-regulated genes responsive to Clb2p peak in either M or M/G1 phases.

There were also genes that responded to Clb2p or Cln3p (or both) that we did not identify as cell cycle regulated. For instance there are 53 genes induced by Cln3p and repressed by Clb2p that are not on our cell cycle-regulated list. Many of these are involved in functions for which we know many genes are cell cycle regulated, e.g., secretion (*PMT2*, *PMT4*, *SEC53*, and *SEC21*), chitin synthesis (*CHS3*), and nucleotide biosynthesis (*ADE3*, *RNR2*). However, we have no other evidence to suggest that these may be false negatives. Indeed, by visual inspection, none of these genes displays convincing signs of periodicity. This observation reinforces the notion that using many types of experiments is crucial to drawing legitimate conclusions.

Our experiments on the transcriptional effects of Cln3p and Clb2p help us dissect the transcriptional regulators of each gene (see above). In addition, they support the notion that mechanistically two opposing oscillators drive the cell cycle. This is particularly well illustrated in some of the subclusters, for instance, the *CLN2* cluster, where the effects of *CLN3* induction are almost exactly mirrored by the opposite effects of *CLB2* induction. For other subclusters we see that the genes respond to only one of the cyclins, (e.g., the Y' cluster is induced by *CLN3* yet relatively unchanged by *CLB2*).

Finally, we found that *CLN3* can repress the transcription of certain genes, particularly a group of genes involved in mating. This was not entirely unexpected, because it had previously been demonstrated that *FAR1* transcription (McKinney *et al.*, 1993) is neg-

actively regulated by start, although a direct link to Cln3p activity has not been previously demonstrated.

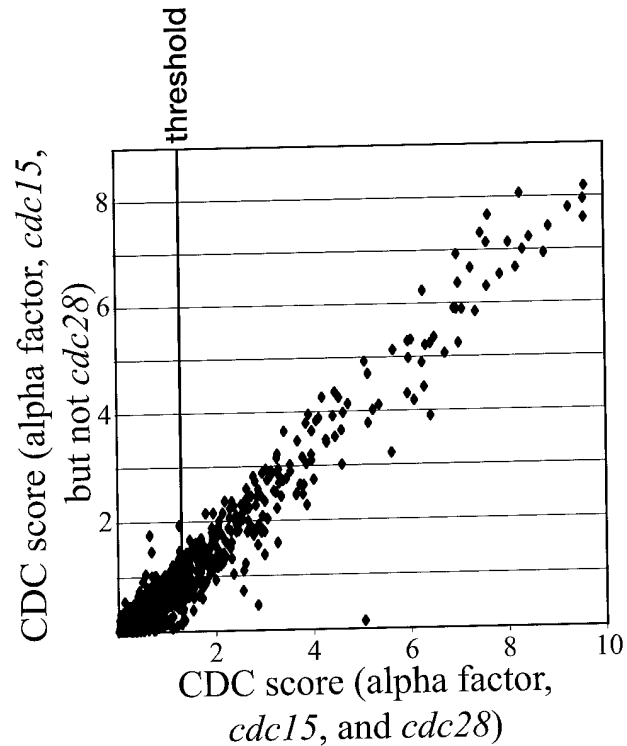
## DISCUSSION

### Reliability of the Methods for Assessing Cell Cycle Regulation

Our identification of a gene as cell cycle regulated was objective in the sense that it was entirely quantitative. Nevertheless, it should be clear that the setting of the threshold was in the end arbitrary. We can ask whether genes below the threshold might still be cell cycle regulated in a biologically significant way, and we can consider whether there are any circumstances in which our experiments might have failed to reveal the cell cycle pattern of regulation. In this context it is relevant that we do not identify 9 of the 104 genes (*CDC8*, *DBF4*, *CHS3*, *PR11*, *TIR1*, *CDC14*, *CLB3*, *DPB3*, and *RAD17*) previously reported to be cell cycle regulated (White *et al.*, 1987; Chapman and Johnston, 1989; Siede *et al.*, 1989; Johnston *et al.*, 1990b; Araki *et al.*, 1991; Fitch *et al.*, 1992; Wan *et al.*, 1992; Igual *et al.*, 1996; Caro *et al.*, 1998). Of these, only *RAD17* appears visually to vary with the cell cycle in our data and then only in the *cdc15* experiment. We believe that most of the remaining false negatives are due to noise in our data set that dampens their signal. It is worth noting that some of these genes showed only very weak cell cycle regulation in the original publications or in other studies done by traditional methods. For instance, *DBF4* oscillated by 2.5-fold in the original publication (Chapman and Johnston, 1989), and in some Northern blotting experiments, oscillation is not seen (Sclafani, personal communication).

This analysis convinces us that relatively few genes with significant cell cycle regulation have not been identified. However, there are many plausible causes of false-positive identifications. Random fluctuations in the data could appear as a cell cycle oscillation, but as described in MATERIALS AND METHODS, we expect this to be a relatively rare event.

Cross-hybridization between genes whose DNA sequences are similar can produce false positives when only one of the genes is actually cell cycle regulated. It has been estimated that cross hybridization in our system can become significant at or above 75% DNA sequence identity (DeRisi, Iyer, and Brown, personal communication). For instance, our data set includes both *DBF2* and *DBF20*, which are 75% identical over the last 800 bp of each gene; it has previously been published that only *DBF2* is cell cycle regulated (Johnston *et al.*, 1990a; Toyn *et al.*, 1991). *DBF20* may appear in our set because *DBF2* cDNA is cross-hybridizing with the DNA sequence of *DBF20* on the microarray. These two genes show somewhat different regulation, however, so this could be an instance of strain differences or errors in the published literature.



**Figure 9.** Aggregate CDC score is largely independent of the *cdc28* data set. Scatter plot for the scores that were derived using either the *cdc15* and  $\alpha$  factor experiments only (plotted on the y axis) or using the *cdc15*, the  $\alpha$  factor, and the *cdc28* experiments (x axis). A single dot is plotted for each gene. It should be noted that adding data increases the absolute magnitude of the scores; it is the relative magnitude, however, that indicates cell cycle regulation.

A third manner in which false positives can occur is when an unregulated gene overlaps the mRNA for a cell cycle-regulated gene. The cDNA corresponding to the regulated gene would hybridize with the unregulated gene's DNA, generating a false positive. In our list there are 42 pairs of genes that overlap, and 39 additional pairs in which the distance between the two genes is <300 bp. A full list of all genes that are near each other by chromosomal position can be found at the web site.

### Comparisons with Previous Analyses

One part of our method for identifying genes regulated by the cell cycle relied on the examining the large body of data already that has been published. Cho *et al.* (1998) performed a study similar to ours using different technology and methods. Our methods can aggregate data from many experiments and thereby improve the signal-to-noise ratio in the total data set. It illustrates as well the value and necessity for making available primary data from genome scale experiments of this kind. The data from Cho *et al.* (1998)

aided in our ability to identify some genes as being cell cycle regulated. Figure 9 shows several points located very near the x axis that represent genes whose identification as cell cycle regulated clearly depends on the data of Cho *et al.* The assessment of cell cycle regulation for the remainder of the genes, as shown in Figure 9, is essentially the same whether the data of Cho *et al.* are included.

The most obvious difference between our results and those of Cho *et al.* (1998) is in the number of genes identified as cell cycle regulated. With a manual decision process, they found 421 genes to be cell cycle regulated. Our set of 800 genes includes 304 of these, but the other 117 do not appear significantly cell cycle regulated in our data. Our set of 800 therefore contains 496 genes not identified by Cho *et al.*

There were many technical differences in the way the two studies were carried out, and it is difficult to say how these may have contributed to the differences between the results. One significant advantage of our analysis was the diversity of experiments from which we could identify the characteristic pattern of cell cycle regulation. This allowed us to distinguish cell cycle regulation from confounding patterns such as those caused by the heat shock response when a culture is shifted from one temperature to another.

One of the largest discrepancies between the two analyses regards genes that may peak twice per cell cycle. We identified 10 genes as cell cycle regulated that according to Cho *et al.* (1998) showed more than one peak but had no single prominent peak in expression. Our algorithm is designed to find genes with single expression peaks; it significantly penalizes more than one peak. Furthermore, visual inspection of the aggregate data does not show multiple peaks in any of these cases. Therefore, we believe the aggregate data set does not support the existence of multiple peaks of expression for these genes. This leaves open the possibility that there may be other genes with more than one peak per cell cycle.

Many of the genes differing between the two data sets had low peak-to-trough ratios and relatively poor aggregate CDC scores. It is perhaps natural that we identified a larger number of modestly regulated genes, because we had a larger number of experiments and a statistical rather than manual approach to identification. It is important to note, however, that some of the differences were in genes with very strong cell cycle regulation. Cho *et al.* (1998) failed to find *FKS1*, *GOG5*, *EGT2*, two histone genes, and several other genes with very strong regulation. Before including the data set of Cho *et al.*, we had failed to find *HO*. Quite a few of the strongly regulated genes not identified by Cho *et al.* were genes known to be regulated fairly directly by Cdc28p (in combination with either Cln3p or Clb2p). The expression of such CDC28-de-

pendent genes may have been altered in the *cdc28-13* block-release experiment of Cho *et al.*

### *Mechanisms of Transcriptional Regulation*

The 800 genes in our list were examined for the binding sites of known cell cycle transcription factors, and for a little more than half of these we found good matches to known sites relevant to the phase of peak expression. Moreover, nearly 70% of these same genes showed a significant response to Cln3p or Clb2p induction (or both). In addition, we identified as cell cycle regulated other sets of genes that form functional pathways and are known to be coregulated (e.g., the methionine biosynthesis genes) or about whose regulation something is known (e.g., the hexose transporters). Thus, there are ~500 genes for which we understand, at some level, the molecular mechanism of cell cycle control, a gratifying number.

This, however, leaves ~300 genes for which we do not have good binding sites for appropriate cell cycle transcription factors and have not identified any compelling novel sites. Because these 300 genes tend to be the less strongly regulated ones, it may be that some of them contain degenerate sites for known factors and were therefore missed in our searches (which generally did not allow mismatches). Alternatively, some of these genes may be controlled by novel sites that we failed to identify; others may be controlled by known factors in a combinatorial manner such that peak expression is at an unexpected time. Another possibility is that some of these transcripts may be controlled in some other way, such as by mRNA stability. Our data set provides fertile ground for further investigation of these questions.

These data give us a partial picture of the logical circuitry of transcriptional controls in the cell cycle. A large number of genes ( $\geq 200$ ) are induced in G1 and S by the action of Cln3p-Cdc28p on MBF and SBF. Furthermore, by M they become repressed by the action of Clb2p-Cdc28p. At the same time, Clb2p-Cdc28p, acting through MCM1 + SFF, induces its own constellation of genes, which may number  $>50$ . These genes include the important transcription factor Swi5p; once its transcription has been induced, and it is allowed to enter the nucleus (perhaps because of a dip in Clb2p-Cdc28p activity) (Moll *et al.*, 1991), another set of genes is turned on. Among these is the CDK inhibitor *SIC1*, which is important for deactivating Clb2p-Cdc28p. The loss of Clb2-Cdc28 activity causes a collapse in the transcription of all Clb2p-dependent transcripts and, moreover, allows Cln3p-Cdc28p to reactivate MBF and SBF to begin a new cell cycle. A gap in this picture is that we do not understand the oscillation in the genes expressed in M/G1 phase from an MCM1 site (the ECB). That is, what is it about an ECB or about Mcm1p that makes expression of these genes cell cycle regulated? A second omission is that we do not un-



derstand very clearly how *CLB2* is induced in the first place, although part of the answer certainly lies in regulation of Clb2p protein stability and Clb2p-Cdc28p activity.

### Functional Significance of Cell Cycle Regulation

Studies of cell cycle regulation have focused on genes with cell cycle-specific functions. That is, they are genes whose functions are only needed for a part of the cycle. These genes are directly involved in, for instance, DNA replication, budding, and mitosis. For some such genes, transcriptional regulation may be a matter of conserving resources. For instance, it would probably do no great harm to express *CDC9* (DNA ligase) constitutively. However, by expressing it, and hundreds of other similar genes, only when needed, the cell can achieve a small advantage. Moreover, yeast often encounter what one might call a "Sleeping Beauty" situation: they lie dormant for weeks or months, and then are required to resume life where they left off. Genes needed for cycling are evidently not needed during the dormant period, but very much needed immediately afterward. Thus, cell cycle-regulated expression may ensure that necessary gene products are always available to cycling cells. In this regard, it is interesting to note that the purine-rich motif AAGAAAAA (Parviz *et al.*, 1998) is thought to be important for response to glucose; this motif may be important in the switch from stationary phase to rapid growth, and we find similar motifs enriched in the promoters of several types of cell cycle-regulated genes. That is, these genes may be growth regulated as well as cell cycle regulated.

Other genes with cell cycle-specific functions act as regulators or switches. For these genes, it is not only important when exactly they are on but also when they are off. An excellent example is Clb2p, which is important for mitotic events but antagonistic toward G1 events. Clb2p is highly regulated: its transcription is regulated; the stability of the protein is regulated; and the activity of the Clb2p-Cdc28p complex is regulated by phosphorylation, dephosphorylation, and the binding of inhibitors. Any one of these regulatory mechanisms is dispensable for viability, but if several are lost, the deregulated Clb2p is lethal. Thus, transcriptional regulation of a gene controlling a switch can be central to its function.

Cell cycle-regulated transcription can be used to build a structure in a highly controlled way. This can be illustrated with some parallels between the strategy of the cell for regulating DNA replication and its strategy for regulating budding. Both processes occur once and only once per cycle; that is, the cell must both initiate the process and also prevent reinitiation. In both cases the cell builds an initiation structure, which for prereplication complexes contains origin recogni-

tion complex components, Mcm proteins, and Cdc6p, and for the prebud site contains Bud proteins (and others). In both cases transcriptional controls provide key components of the initiation complexes at certain times so that the complexes can be built in an orderly manner; however, the complexes cannot easily later be rebuilt at an inappropriate time, partly because the components are no longer available. The building of the replication and budding initiation complexes occurs long before replication or budding actually occur, and accordingly, key components of the complexes (e.g., Mcms, Cdc6p, Bud4p, and Bud8p) are provided in M phase, long before they are used.

These types of cell cycle-regulated genes are well known. However, because our identifications were relatively complete and inclusive, and because the method of identification was not hypothesis driven, we were able to find cell cycle-regulated genes of quite unexpected types. In particular, we found many cell cycle-regulated genes whose functions are essentially not cell cycle specific. These include genes involved in secretion and lipid synthesis, which are probably needed at all times, at least at some level. In these cases, the role of cell cycle regulation may be to provide extra transcript when there is extra demand, i.e., at the time of budding. The best single example of such a gene may be *PMA1*, encoding the major plasma membrane proton pump, a stable protein. The *PMA1* function is essential, and although its function is required throughout the cell cycle (Serrano *et al.*, 1986), its transcription is strongly periodic. Peak expression probably coincides with the time of fastest growth of the plasma membrane in the bud; presumably periodic expression is needed to provide the *PMA1* for the daughter cell. In this case, it is impractical to make a store of *PMA1* beforehand, because excess *PMA1* is toxic, causing accumulation of intracellular membranous structures (Espinet *et al.*, 1995). The cell cycle regulation of *PMA1* might be considered partly an answer to a problem of stoichiometry. Stoichiometric considerations are important for other cell cycle-regulated genes as well, notably the histones, SPB components, and microtubules.

### Conclusions

To summarize, we found 800 yeast genes whose transcripts oscillate through one peak per cell cycle. We defined these 800 genes by using an objective, empirical model of cell cycle regulation, whose threshold was somewhat arbitrary. Below this threshold there may well be genes whose expression is truly periodic and whose periodicity might even have biological significance. Unfortunately we cannot reliably detect such genes, but it is likely that they are relatively few in number, because very few of the genes known

beforehand to be periodically expressed during the cell cycle fall below our threshold.

With respect to mechanism, we could account for the periodicity of expression of about half. We found relevant DNA motifs upstream of these genes, and we observed independently that their expression was affected by induction of Cln3p and Clb2p. The basis of the regulation of the remaining genes remains to be elucidated, and some of the detailed behavior of some of the cyclin-dependent gene expression also remains to be explained.

Finally, we hope that our colleagues in the scientific community will find this paper to be valuable not as only a description of our results but also as a resource for data for some time to come. We made measurements for virtually every gene or open reading frame in the yeast genome but are in a position to interpret explicitly only a tiny fraction of these measurements. We make our data available, as did Cho *et al.* (1998), in the expectation that there will be increasing value in genomic data sets as more of them accumulate and that together these will fully realize the promise of the genome sequencing projects.

## ACKNOWLEDGMENTS

We thank Jon Mulholland, Holly Sundberg, Trisha Davis, Anita Sil, and Lee Hartwell for their assistance and helpful conversations. We also thank those who assisted in the tedious task of microarray manufacture (Cammy Kao, Audrey Gasch, Tracy Ferea, Joseph DeRisi, Craig Cummings, and Barbara Dunn). Herman Wijnen, Max Diehn, and Doug Ross deserve thanks for critical reading of the manuscript. Our efforts were greatly aided by the genome databases, particularly the *Saccharomyces* Genome Database (<http://genome-www.stanford.edu/Saccharomyces/>) and the Yeast Protein Database (<http://quest7.proteome.com/YPDhome.html>). This work was supported by grants from the National Institutes of Health to D.B. (GM46406 and CA77097), to B.F. (GM45410), to P.O.B. (HG00450), and to M.Q.Z. (HG01696). This work was also supported by the Howard Hughes Medical Institute. P.O.B. is an associate investigator of the Howard Hughes Medical Institute. M.Q.Z. is also supported by a Cold Spring Harbor Laboratory Association Award, and G.S. was supported by a postdoctoral fellowship from the Department of the Army (DAMD17-97-1-7316).

## REFERENCES

- Acton, T.B., Zhong, H., and Vershon, A.K. (1997). DNA-binding specificity of Mcm1: operator mutations that alter DNA-bending and transcriptional activities by a MADS box protein. *Mol. Cell Biol.* **17**, 1881-1889.
- Althoefer, H., Schleiffer, A., Wassmann, K., Nordheim, A., and Ammerer, G. (1995). Mcm1 is required to coordinate G2-specific transcription in *Saccharomyces cerevisiae*. *Mol. Cell Biol.* **15**, 5917-5928.
- Amon, A., Tyers, M., Fitcher, B., and Nasmyth, K. (1993). Mechanisms that help the yeast cell cycle clock tick: G2 cyclins transcriptionally activate G2 cyclins and repress G1 cyclins. *Cell* **74**, 993-1007.
- Andrews, B., and Measday, V. (1998). The cyclin family of budding yeast: abundant use of a good idea. *Trends Genet.* **14**, 66-72.
- Andrews, B.J., and Herskowitz, I. (1989). Identification of a DNA binding factor involved in cell-cycle control of the yeast HO gene. *Cell* **57**, 21-29.
- Araki, H., Hamatake, R.K., Morrison, A., Johnson, A.L., Johnston, L.H., and Sugino, A. (1991). Cloning DPB3, the gene encoding the third subunit of DNA polymerase II of *Saccharomyces cerevisiae*. *Nucleic Acids Res.* **19**, 4867-4872.
- Blaiseau, P.L., Isnard, A.D., Surdin-Kerjan, Y., and Thomas, D. (1997). Met31p and Met32p, two related zinc finger proteins, are involved in transcriptional regulation of yeast sulfur amino acid metabolism. *Mol. Cell Biol.* **17**, 3640-3648.
- Bobola, N., Jansen, R.P., Shin, T.H., and Nasmyth, K. (1996). Asymmetric accumulation of Ash1p in postanaphase nuclei depends on a myosin and restricts yeast mating-type switching to mother cells. *Cell* **84**, 699-709.
- Botstein, D., Amberg, D., Mulholland, J., Huffaker, T., Adams, A., Drubin, D., and Stearns, T. (1997). The yeast cytoskeleton. In: *The Molecular and Cellular Biology of the Yeast Saccharomyces: Cell Cycle and Cell Biology*, ed. J.R. Pringle, J.R. Broach, and E.W. Jones, Cold Spring Harbor, NY: Cold Spring Harbor Press, 1-90.
- Caro, L.H., Smits, G.J., van Egmond, P., Chapman, J.W., and Klis, F.M. (1998). Transcription of multiple cell wall protein-encoding genes in *Saccharomyces cerevisiae* is differentially regulated during the cell cycle. *FEMS (Fed. Eur. Microbiol. Soc.) Microbiol. Lett.* **161**, 345-349.
- Chapman, J.W., and Johnston, L.H. (1989). The yeast gene, *DBF4*, essential for entry into S phase is cell cycle regulated. *Exp. Cell Res.* **180**, 419-428.
- Chevalier, S., and Blow, J.J. (1996). Cell cycle control of replication initiation in eukaryotes. *Curr. Opin. Cell Biol.* **8**, 815-821.
- Cho, R.J., *et al.* (1998). A genome-wide transcriptional analysis of the mitotic cell cycle. *Mol. Cell* **2**, 65-73.
- Cross, F.R. (1995). Starting the cell cycle: what's the point? *Curr. Opin. Cell Biol.* **7**, 790-797.
- Cross, F.R., Hoek, M., McKinney, J.D., and Tinkelenberg, A.H. (1994). Role of *SWI4* in cell cycle regulation of *CLN2* expression. *Mol. Cell Biol.* **14**, 4779-4787.
- DeRisi, J.L., Iyer, V.R., and Brown, P.O. (1997). Exploring the metabolic and genetic control of gene expression on a genomic scale. *Science* **278**, 680-686.
- Dohrmann, P.R., Butler, G., Tamai, K., Dorland, S., Greene, J.R., Thiele, D.J., and Stillman, D.J. (1992). Parallel pathways of gene regulation: homologous regulators *SWI5* and *ACE2* differentially control transcription of HO and chitinase. *Genes & Dev.* **6**, 93-104.
- Dohrmann, P.R., Voth, W.P., and Stillman, D.J. (1996). Role of negative regulation in promoter specificity of the homologous transcriptional activators *Ace2p* and *Swi5p*. *Mol. Cell Biol.* **16**, 1746-1758.
- Donaldson, A.D., and Kilmartin, J.V. (1996). *Spc42p*: a phosphorylated component of the *S. cerevisiae* spindle pole body (SPB) with an essential function during SPB duplication. *J. Cell Biol.* **132**, 887-901.
- Donovan, J.D., Toyn, J.H., Johnson, A.L., and Johnston, L.H. (1994). P40SDB25, a putative CDK inhibitor, has a role in the M/G1 transition in *Saccharomyces cerevisiae*. *Genes & Dev.* **8**, 1640-1653.
- Eisen, M.B., and Brown, P.O. (1999). DNA arrays for analysis of gene expression. *Methods Enzymol.* (*in press*).
- Eisen, M.B., Spellman, P.T., Brown, P.O., and Botstein, D. (1999). Cluster analysis and display of genome-wide expression patterns. *Proc. Natl. Acad. Sci. USA* (*in press*).

- Espinete, C., de la Torre, M.A., Aldea, M., and Herrero, E. (1995). An efficient method to isolate yeast genes causing overexpression-mediated growth arrest. *Yeast* 11, 25–32.
- Fitch, I., Dahmann, C., Surana, U., Amon, A., Nasmyth, K., Goetsch, L., Byers, B., and Futcher, B. (1992). Characterization of four B-type cyclin genes of the budding yeast *Saccharomyces cerevisiae*. *Mol. Biol. Cell* 3, 805–818.
- Freeman, K.B., Karns, L.R., Lutz, K.A., and Smith, M.M. (1992). Histone H3 transcription in *Saccharomyces cerevisiae* is controlled by multiple cell cycle activation sites and a constitutive negative regulatory element. *Mol. Cell. Biol.* 12, 5455–5463.
- Futcher, A.B. (1993). Analysis of the cell cycle in *S. cerevisiae*. In: *The Cell Cycle: A Practical Approach*, ed. P. Fantes and R. Brooks, Oxford: IRL Press, 69–92.
- Guacci, V., Koshland, D., and Strunnikov, A. (1997). A direct link between sister chromatid cohesion and chromosome condensation revealed through the analysis of *MCD1* in *S. cerevisiae*. *Cell* 91, 47–57.
- Heid, C.A., Stevens, J., Livak, K.J., and Williams, P.M. (1996). Real time quantitative PCR. *Genome Res.* 6, 986–994.
- Hereford, L.M., Osley, M.A., Ludwig, T.R.d., and McLaughlin, C.S. (1981). Cell-cycle regulation of yeast histone mRNA. *Cell* 24, 367–375.
- Igual, J.C., Johnson, A.L., and Johnston, L.H. (1996). Coordinated regulation of gene expression by the cell cycle transcription factor *Swi4* and the protein kinase C MAP kinase pathway for yeast cell integrity. *EMBO J.* 15, 5001–5013.
- Jarvis, E.E., Hagen, D.C., and Sprague, G.F., Jr. (1988). Identification of a DNA segment that is necessary and sufficient for alpha-specific gene control in *Saccharomyces cerevisiae*: implications for regulation of alpha-specific and a-specific genes. *Mol. Cell. Biol.* 8, 309–320.
- Johnston, L.H., Eberly, S.L., Chapman, J.W., Araki, H., and Sugino, A. (1990a). The product of the *Saccharomyces cerevisiae* cell cycle gene *DBF2* has homology with protein kinases and is periodically expressed in the cell cycle. *Mol. Cell. Biol.* 10, 1358–1366.
- Johnston, L.H., White, J.H., Johnson, A.L., Lucchini, G., and Plevani, P. (1990b). Expression of the yeast DNA primase gene, *PR1*, is regulated within the mitotic cell cycle and in meiosis. *Mol. Gen. Genet.* 221, 44–48.
- Jones, E.W., and Fink, G.R. (1982). The regulation of amino acid and nucleotide biosynthesis in yeast. In: *The Molecular Biology of the Yeast Saccharomyces: Metabolism and Gene Expression*, ed. J.N. Strathern, E.W. Jones, and J.R. Broach, Cold Spring Harbor, NY: Cold Spring Harbor Press.
- Kaiser, C.A., Gimeno, R.E., and Shaywitz, D.A. (1997). Protein secretion, membrane biogenesis, and endocytosis. In: *The Molecular and Cellular Biology of the Yeast Saccharomyces: Cell Cycle and Cell Biology*, ed. J.R. Pringle, J.R. Broach, and E.W. Jones, Cold Spring Harbor NY: Cold Spring Harbor Press, 91–227.
- Kaiser, P., Sia, R.A.L., Bardes, E.G.S., Lew, D.J., and Reed, S.I. (1998). *Cdc34* and the F-box protein *Met30* are required for degradation of the Cdk-inhibitory kinase *Swe1*. *Genes & Dev.* 12, 2587–2597.
- Kilmartin, J.V., Dyos, S.L., Kershaw, D., and Finch, J.T. (1993). A spacer protein in the *Saccharomyces cerevisiae* spindle pole body whose transcript is cell cycle-regulated. *J. Cell Biol.* 123, 1175–1184.
- Klapholz, S., and Esposito, R.E. (1980). Isolation of *SPO12-1* and *SPO13-1* from a natural variant of yeast that undergoes a single meiotic division. *Genetics* 96, 567–588.
- Klis, F.M. (1994). Review: cell wall assembly in yeast. *Yeast* 10, 851–869.
- Knapp, D., Bhoite, L., Stillman, D.J., and Nasmyth, K. (1996). The transcription factor *Swi5* regulates expression of the cyclin kinase inhibitor *p40SIC1*. *Mol. Cell. Biol.* 16, 5701–5707.
- Koch, C., Moll, T., Neuberger, M., Ahorn, H., and Nasmyth, K. (1993). A role for the transcription factors *Mbp1* and *Swi4* in progression from G1 to S phase. *Science* 261, 1551–1557.
- Koch, C., and Nasmyth, K. (1994). Cell cycle regulated transcription in yeast. *Curr. Opin. Cell Biol.* 6, 451–459.
- Kovacech, B., Nasmyth, K., and Schuster, T. (1996). *EGT2* gene transcription is induced predominantly by *Swi5* in early G1. *Mol. Cell. Biol.* 16, 3264–3274.
- Lawrence, C.E., Altschul, S.F., Boguski, M.S., Liu, J.S., Neuwald, A.F., and Wootton, J.C. (1993). Detecting subtle sequence signals: a Gibbs sampling strategy for multiple alignment. *Science* 262, 208–214.
- Lew, D.J., Weinert, T., and Pringle, J.R. (1997). Cell cycle control in *Saccharomyces cerevisiae*. In: *The Molecular and Cellular Biology of the Yeast Saccharomyces: Cell Cycle and Cell Biology*, ed. J.R. Pringle, J.R. Broach, and E.W. Jones, Cold Spring Harbor, NY: Cold Spring Harbor Press, 607–695.
- Louis, E.J. (1995). The chromosome ends of *Saccharomyces cerevisiae*. *Yeast* 11, 1553–1573.
- Louis, E.J., and Haber, J.E. (1992). The structure and evolution of subtelomeric Y' repeats in *Saccharomyces cerevisiae*. *Genetics* 131, 559–574.
- Lowndes, N.F., Johnson, A.L., Breeden, L., and Johnston, L.H. (1992). *Swi6* protein is required for transcription of the periodically expressed DNA synthesis genes in budding yeast. *Nature* 357, 505–508.
- Lowndes, N.F., Johnson, A.L., and Johnston, L.H. (1991). Coordination of expression of DNA synthesis genes in budding yeast by a cell-cycle regulated trans factor. *Nature* 350, 247–250.
- Lydall, D., Ammerer, G., and Nasmyth, K. (1991). A new role for *MCM1* in yeast: cell cycle regulation of *SWI5* transcription. *Genes & Dev.* 5, 2405–2419.
- Ma, X.J., Lu, Q., and Grunstein, M. (1996). A search for proteins that interact genetically with histone H3 and H4 amino termini uncovers novel regulators of the *Swe1* kinase in *Saccharomyces cerevisiae*. *Genes & Dev.* 10, 1327–1340.
- McInerney, C.J., Partridge, J.F., Mikesell, G.E., Creemer, D.P., and Breeden, L.L. (1997). A novel *Mcm1*-dependent element in the *SWI4*, *CLN3*, *CDC6*, and *CDC47* promoters activates M/G1-specific transcription. *Genes & Dev.* 11, 1277–1288.
- McIntosh, E.M., Atkinson, T., Storms, R.K., and Smith, M. (1991). Characterization of a short, cis-acting DNA sequence which conveys cell cycle stage-dependent transcription in *Saccharomyces cerevisiae*. *Mol. Cell. Biol.* 11, 329–337.
- McKinney, J.D., Chang, F., Heintz, N., and Cross, F.R. (1993). Negative regulation of *FAR1* at the start of the yeast cell cycle. *Genes & Dev.* 7, 833–843.
- Michaelis, C., Ciosk, R., and Nasmyth, K. (1997). Cohesins: chromosomal proteins that prevent premature separation of sister chromatids. *Cell* 91, 35–45.
- Moll, T., Tebb, G., Surana, U., Robitsch, H., and Nasmyth, K. (1991). The role of phosphorylation and the *CDC28* protein kinase in cell cycle-regulated nuclear import of the *S. cerevisiae* transcription factor *SWI5*. *Cell* 66, 743–758.
- Nasmyth, K. (1985). At least 1400 base pairs of 5'-flanking DNA is required for the correct expression of the *HO* gene in yeast. *Cell* 42, 213–223.

- Nasmyth, K. (1993). Control of the yeast cell cycle by the Cdc28 protein kinase. *Curr. Opin. Cell. Biol.* 5, 166-179.
- Neuwald, A.F., Liu, J.S., and Lawrence, C.E. (1995). Gibbs motif sampling: detection of bacterial outer membrane protein repeats. *Protein Sci.* 4, 1618-1632.
- Oehlen, L.J., McKinney, J.D., and Cross, F.R. (1996). Ste12 and Mcm1 regulate cell cycle-dependent transcription of *FAR1*. *Mol. Cell. Biol.* 16, 2830-2837.
- Orlean, P. (1997). Biogenesis of yeast wall and surface components. In: *The Molecular and Cellular Biology of the Yeast Saccharomyces: Cell Cycle and Cell Biology*, ed. J.R. Pringle, J.R. Broach, and E.W. Jones, Cold Spring Harbor, NY: Cold Spring Harbor Press, 229-362.
- Partridge, J.F., Mikesell, G.E., and Breeden, L.L. (1997). Cell cycle-dependent transcription of *CLN1* involves swi4 binding to MCB-like elements. *J. Biol. Chem.* 272, 9071-9077.
- Parviz, F., Hall, D.D., Markwardt, D.D., and Heideman, W. (1998). Transcriptional regulation of *CLN3* expression by glucose in *Saccharomyces cerevisiae*. *J. Bacteriol.* 180, 4508-4515.
- Patton, E.E., Willems, A.R., Sa, D., Kuras, L., Thomas, D., Craig, K.L., and Tyers, M. (1998). Cdc53 is a scaffold protein for multiple Cdc34/Skp1/F-box protein complexes that regulate cell division and methionine biosynthesis in yeast. *Genes & Dev.* 12, 692-705.
- Pellman, D., Bagget, M., Tu, Y.H., Fink, G.R., and Tu, H. (1995). Two microtubule-associated proteins required for anaphase spindle movement in *Saccharomyces cerevisiae*. *J. Cell. Biol.* 130, 1373-1385 (erratum 131, 561).
- Price, C., Nasmyth, K., and Schuster, T. (1991). A general approach to the isolation of cell cycle-regulated genes in the budding yeast, *Saccharomyces cerevisiae*. *J. Mol. Biol.* 218, 543-556.
- Sanders, S.L., and Herskowitz, I. (1996). The *BUD4* protein of yeast, required for axial budding, is localized to the mother/BUD neck in a cell cycle-dependent manner. *J. Cell Biol.* 134, 413-427.
- Schneider, B.L., Yang, Q.H., and Futcher, A.B. (1996). Linkage of replication to start by the Cdk inhibitor Sic1. *Science* 272, 560-562.
- Sengupta, P., and Cochran, B.H. (1991). MAT alpha 1 can mediate gene activation by a-mating factor. *Genes & Dev.* 5, 1924-1934.
- Serrano, R., Kielland-Brandt, M.C., and Fink, G.R. (1986). Yeast plasma membrane ATPase is essential for growth and has homology with (Na<sup>+</sup> + K<sup>+</sup>), K<sup>+</sup>- and Ca<sup>2+</sup>-ATPases. *Nature* 319, 689-693.
- Shalon, D., Smith, S.J., and Brown, P.O. (1996). A DNA microarray system for analyzing complex DNA samples using two-color fluorescent probe hybridization. *Genome Res.* 6, 639-645.
- Sherman, F. (1991). Getting started with yeast. In: *Guide to Yeast Genetics and Molecular Biology*, ed. C.G.a.G.R. Fink, San Diego: Academic Press, 3-21.
- Siede, W., Robinson, G.W., Kalainov, D., Malley, T., and Friedberg, E.C. (1989). Regulation of the *RAD2* gene of *Saccharomyces cerevisiae*. *Mol. Microbiol.* 3, 1697-7707.
- Strunnikov, A.V., Larionov, V.L., and Koshland, D. (1993). *SMC1*: an essential yeast gene encoding a putative head-rod-tail protein is required for nuclear division and defines a new ubiquitous protein family. *J. Cell Biol.* 123, 1635-1648.
- Thomas, D., Cherest, H., and Surdin-Kerjan, Y. (1989). Elements involved in S-adenosylmethionine-mediated regulation of the *Saccharomyces cerevisiae* *MET25* gene. *Mol. Cell. Biol.* 9, 3292-3298.
- Toyn, J.H., Araki, H., Sugino, A., and Johnston, L.H. (1991). The cell-cycle-regulated budding yeast gene *DBF2*, encoding a putative protein kinase, has a homologue that is not under cell-cycle control. *Gene* 104, 63-70.
- Toyn, J.H., and Johnston, L.H. (1993). Spo12 is a limiting factor that interacts with the cell cycle protein kinases Dbf2 and Dbf20, which are involved in mitotic chromatid disjunction. *Genetics* 135, 963-971.
- Unger, M.W., and Hartwell, L.H. (1976). Control of cell division in *Saccharomyces cerevisiae* by methionyl-tRNA. *Proc. Natl. Acad. Sci. USA* 73, 1664-1668.
- Wan, J., Xu, H., and Grunstein, M. (1992). *CDC14* of *Saccharomyces cerevisiae*. Cloning, sequence analysis, and transcription during the cell cycle. *J. Biol. Chem.* 267, 11274-11280.
- Wang, Z.F., Whitfield, M.L., Ingledue, T.C., III, Dominski, Z., and Marzluff, W.F. (1996). The protein that binds the 3' end of histone mRNA: a novel RNA-binding protein required for histone pre-mRNA processing. *Genes & Dev.* 10, 3028-3040.
- White, J.H., Green, S.R., Barker, D.G., Dumas, L.B., and Johnston, L.H. (1987). The *CDC8* transcript is cell cycle regulated in yeast and is expressed coordinately with *CDC9* and *CDC21* at a point preceding histone transcription. *Exp. Cell Res.* 171, 223-231.
- Yamamoto, A., Guacci, V., and Koshland, D. (1996). Pds1p, an inhibitor of anaphase in budding yeast, plays a critical role in the APC and checkpoint pathway(s). *J. Cell Biol.* 133, 99-110.