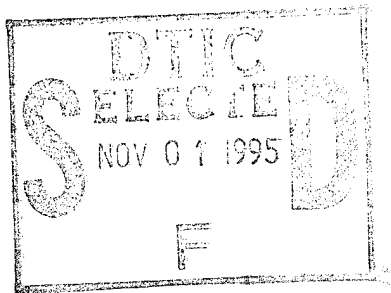


FIELD EMITTER ARRAY BASED DICKE SWITCH ARRAY FOR MM-WAVE



RADIOMETRIC SYSTEMS

Contract No: N00014-94-C-0243

MONTHLY REPORT NO. 3

Period Ending December 1994

Prepared For

BALLISTIC MISSILE DEFENSE ORGANIZATION

OFFICE OF NAVAL RESEARCH

CODE 251A

BALLSTON TOWER ONE

800 NORTH QUINCY STREET

ARLINGTON VA 22217-5660

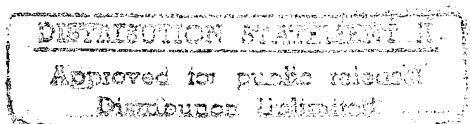
Prepared By.

Princeton Microwave Technology Inc.

3564 Quakerbridge Road

Mercerville. NJ 08619

DATA QUALITY IMPROVED



19951031 035

TASK 1.3. Software Analysis of Array.

The preliminary analysis of the array has been completed. Based on this analysis an array has been designed and a prototype circuit is being readied. The array will be first tested statically so that its performance is documented for comparison later. In order to conduct the testing of the array, illumination and receiving horn antennas at 30 Ghz have been designed . Once the transmission characteristics of the array have been completed, the final array with the switches will be implemented to test the overall objective of the program.

TASK 2.0 Fabrication

A preliminary design of the array has been completed. A prototype array has been layed out for fabrication in order to test its transmission characteristics. The Experiment will consist of the array illuminated by circular horn for the source and the energy will be received by a second circular horn, after it has passed through the array. The design of the horns have also been concluded and submitted for fabrication.

Plans for next month:

During the next month the testing of the switch will be completed. It is expected to complete the testing of the switch array in its transmission mode.

J	
Distribution /	
Availability Codes	
Dist	Avail and/or Special
A-1	

TASK 1.3. Software Analysis of Array.

The preliminary analysis of the array has been completed. Based on this analysis an array has been designed and a prototype circuit is being readied. The array will be first tested statically so that its performance is documented for comparison later. In order to conduct the testing of the array, illumination and receiving horn antennas at 30 Ghz have been designed . Once the transmission characteristics of the array have been completed, the final array with the switches will be implemented to test the overall objective of the program.

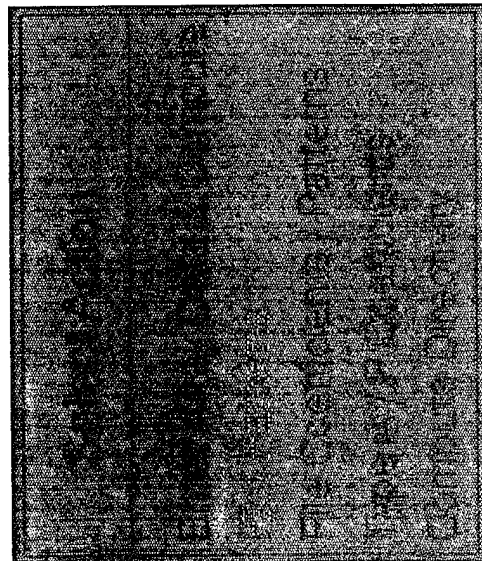
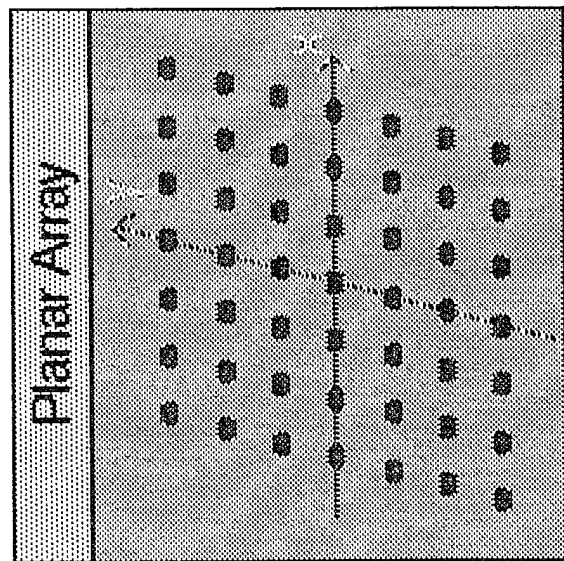
Figures 1 and 2 shown the specificatons of the planar array and its radiation pattern. Figures 3,4,5 and 6 detail the design parameters associated with the test horn antennas.

TASK 2.0 Fabrication

A preliminary design of the array has been completed. A prototype array has been layed out for fabrication in order to test its transmission characteristics. The Experiment will consist of the array illuminated by circular horn for the source and the energy will be received by a second circular horn, after it has passed through the array. The design of the horns have also been concluded and submitted for fabrication.

Plans for next month:

During the next month the testing of the switch will be completed. It is expected to complete the testing of the switch array in its transmission mode.

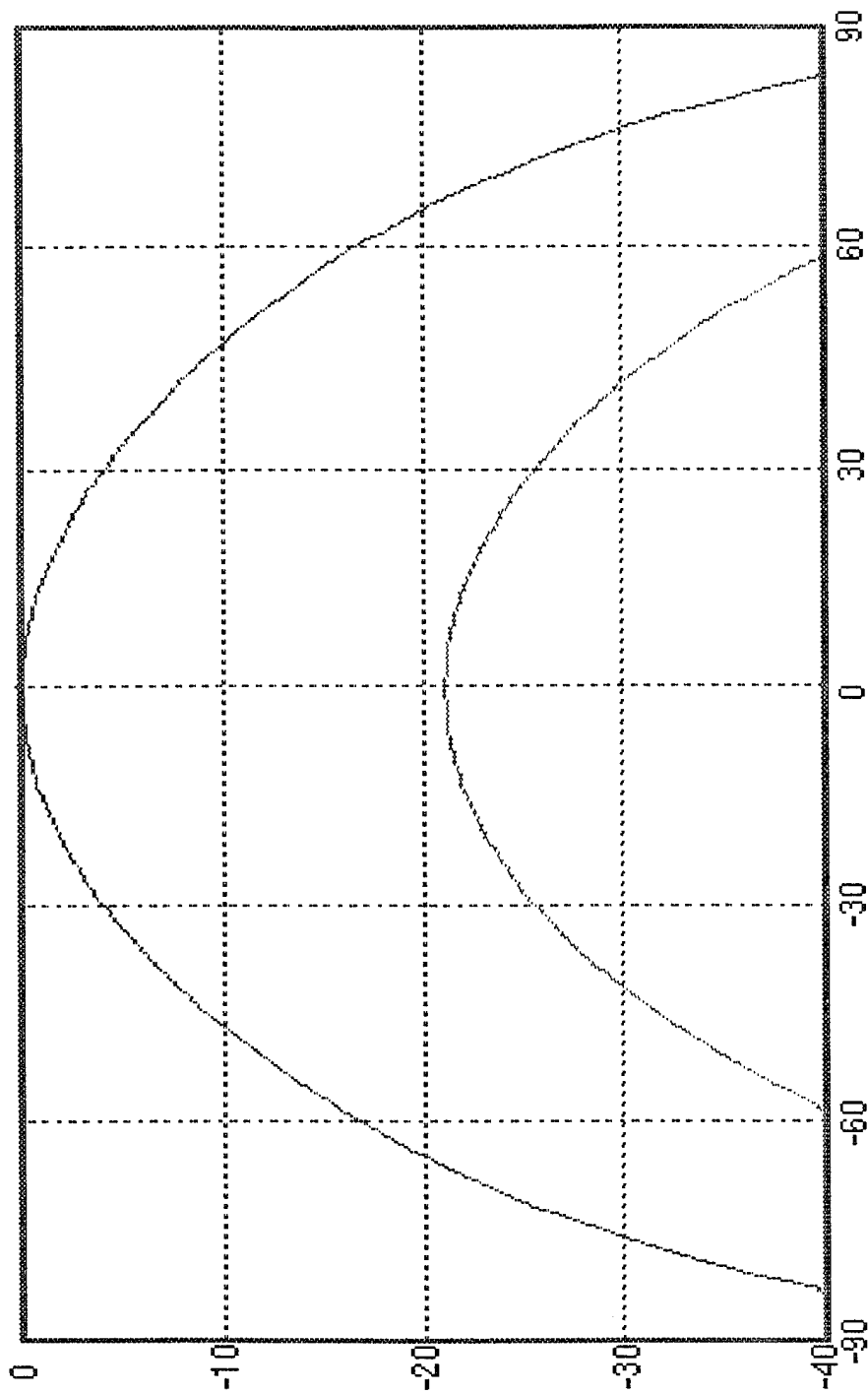


Array Specifications	
Number of elements	in x: 2 in y: 2
Element spacing (cm)	in x: .5 in y: .5
Operating frequency (GHz):	30
Amplitude Distribution: Uniform	
Phase Distribution: Broadside Beam	
Phase shift in x:	0.0 in y: 0.0
Scan angle:	$\theta = 0.0$ $\phi = 0.0$ deg.
Element type: Rectangular Patch	
Polarization of elements: (X/Y)? X	
Resonant length (cm): .3	
Patch width (cm): .3	
Pattern cut: ϕ (deg)= 5	
Pattern increment (deg): 1	

Use ↑ and Enter for menus;

Esc to backup or quit

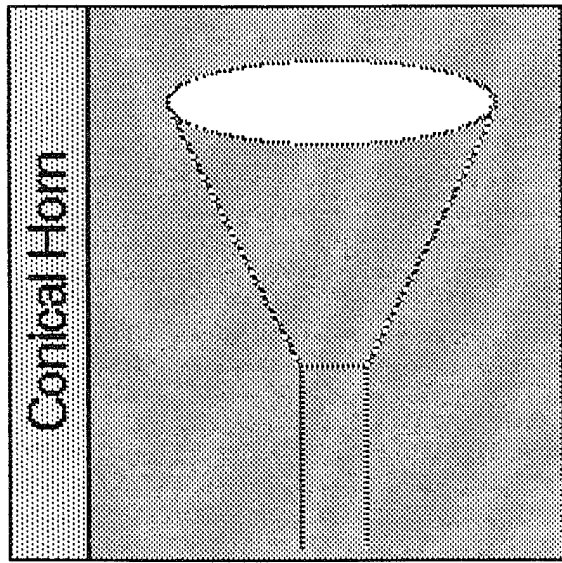
FIGURE 1: 2 x 2 ARRAY AT 30 GHz



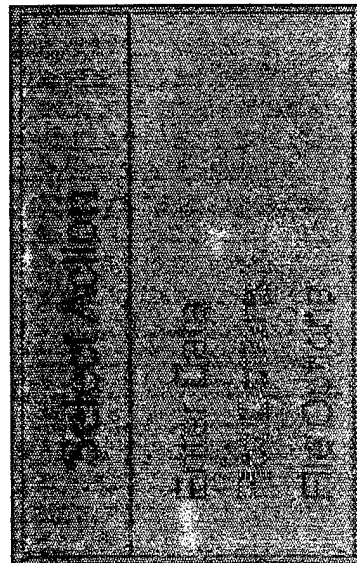
Use \leftrightarrow to move cursor
PrtSc for EGAD
Esc to quit

E-theta = 0.00 dB
E-phi = -21.16 dB
at Theta= 0.0 deg.

Figure 2: Pattern Associated
with Figure 1



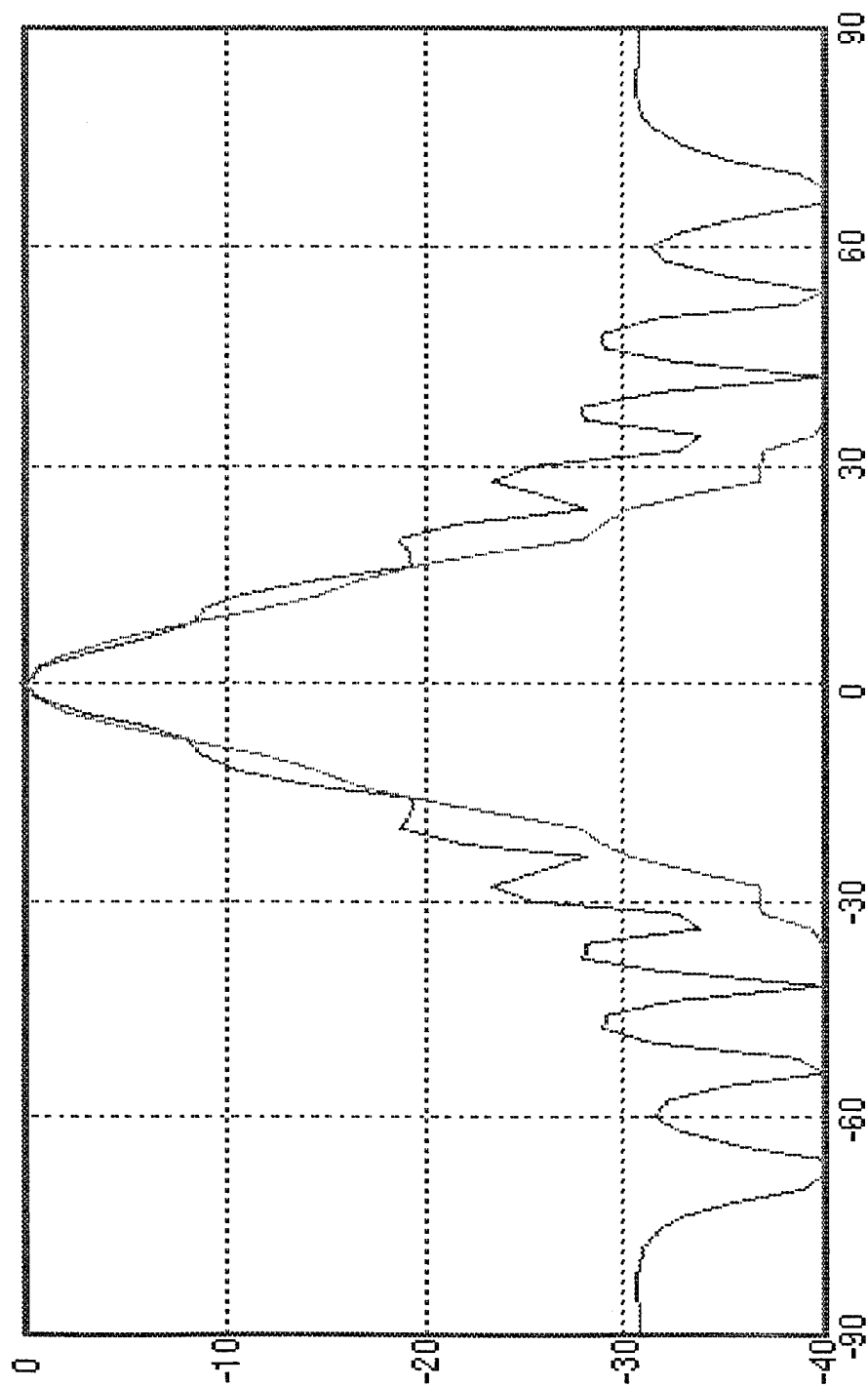
Input Data
Enter the frequency (GHz): 30
Enter aperture radius (cm): 3.9
Enter axial horn length (to apex)(cm): 20
Enter pattern increment (deg): 2



Horn Characteristics
Maximum phase error is 136.9°
Optimum aperture radius is 3.9 cm
The directivity is 24.8 dB

Use ↑ and Enter for menus; Esc to backup or quit

Figure 3: 'Illuminating Horn at 30 GHz

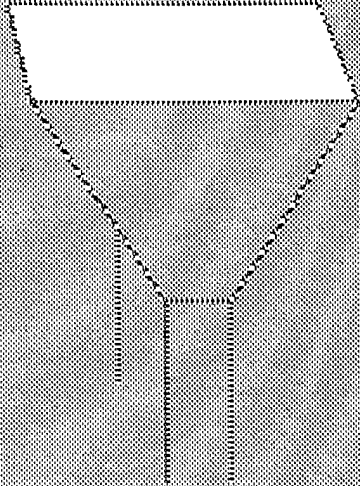


Use \leftrightarrow to move cursor
 PrtSc for EGAD
 Esc to quit

E-plane = 0.00 dB
 H-plane = 0.00 dB
 at Theta= 0.0 deg.

Figure 4: Pattern of illuminating Conical Horn

E-plane Sectoral Horn



Input Data

Enter the frequency (GHz): 30
Enter E-plane aperture dimension (cm): 6
Enter H-plane aperture dimension (cm): 6
Enter axial horn length (to apex)(cm): 20
Enter pattern increment (deg): 2

Plot Options

Plot type (P/R): R

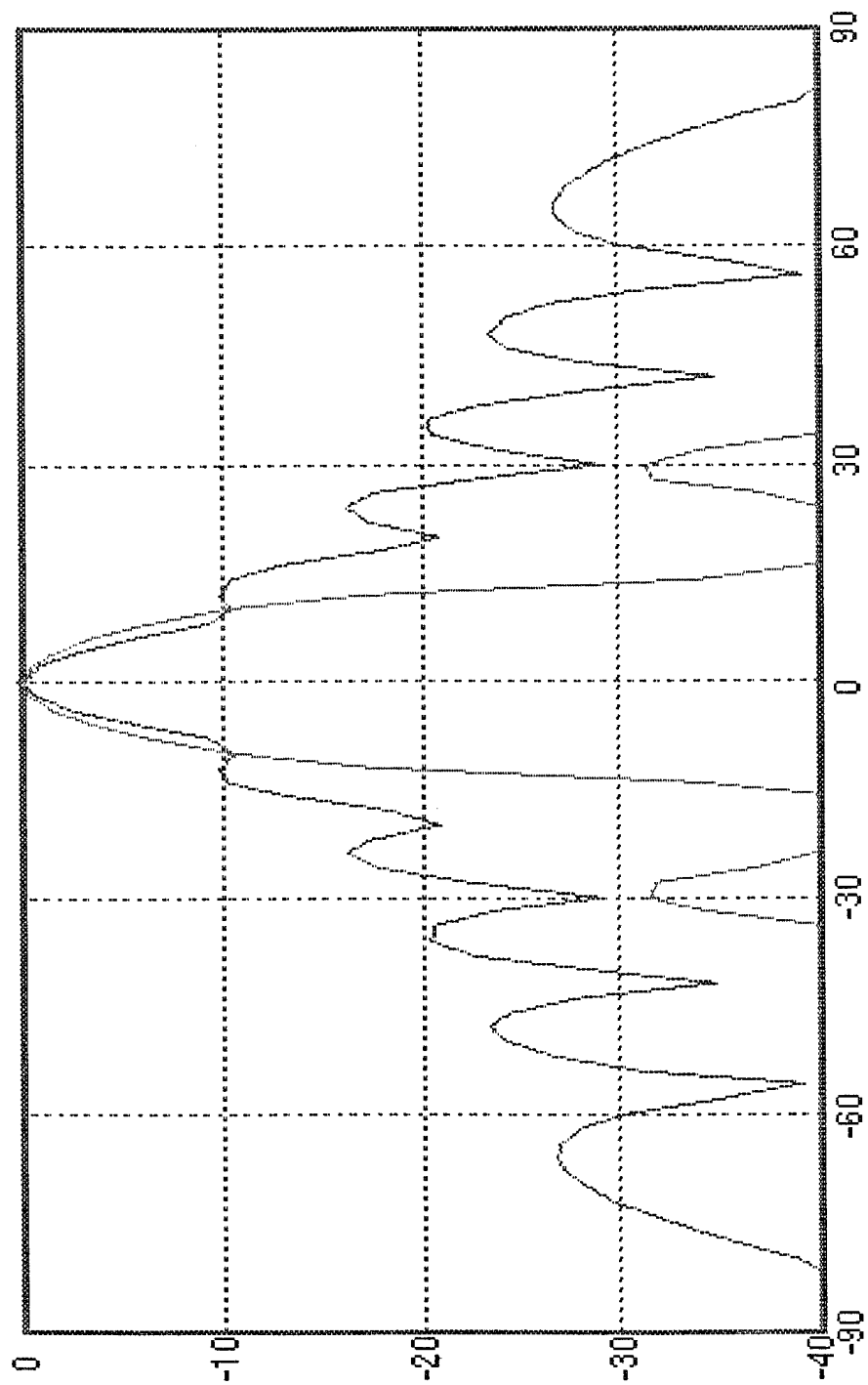
Horn Characteristics

Maximum phase error is 81.0°
Optimum E-plane dimension is 6.3 cm
The directivity is 24.9 dB

Use ↑ and Enter for menus;

Esc to backup or quit

Figure 5: *illuminating* H_{an} at 30 GHz



Use \leftarrow to move cursor
 PrtSc for EGAD
 Esc to quit

E-plane = 0.00 dB
 H-plane = 0.00 dB
 at Theta= 0.0 deg.

Figure 6: Pattern of Rectangular illuminating
 Horn at 30 GHz.



OFFICE OF THE UNDER SECRETARY OF DEFENSE (ACQUISITION)
DEFENSE TECHNICAL INFORMATION CENTER
CAMERON STATION
ALEXANDRIA, VIRGINIA 22304-6145

IN REPLY
REFER TO

DTIC-OCC

SUBJECT: Distribution Statements on Technical Documents

TO:

OFFICE OF NAVAL RESEARCH
CORPORATE PROGRAMS DIVISION
ONR 353
800 NORTH QUINCY STREET
ARLINGTON, VA 22217-5660

1. Reference: DoD Directive 5230.24, Distribution Statements on Technical Documents, 18 Mar 87.

2. The Defense Technical Information Center received the enclosed report (referenced below) which is not marked in accordance with the above reference.

MONTHLY REPORT #3
N00014-94-C-0243
TITLE: FIELD EMITTER ARRAY
BASED DICKE SWITCH ARRAY FOR
MM-WAVE

3. We request the appropriate distribution statement be assigned and the report returned to DTIC within 5 working days.

4. Approved distribution statements are listed on the reverse of this letter. If you have any questions regarding these statements, call DTIC's Cataloging Branch, (703) 274-6837.

FOR THE ADMINISTRATOR:

1 Encl

GOPALAKRISHNAN NAIR
Chief, Cataloging Branch

1995 1031 035

DISTRIBUTION STATEMENT A:

APPROVED FOR PUBLIC RELEASE: DISTRIBUTION IS UNLIMITED

DISTRIBUTION STATEMENT B:

DISTRIBUTION AUTHORIZED TO U.S. GOVERNMENT AGENCIES ONLY;
(Indicate Reason and Date Below). OTHER REQUESTS FOR THIS DOCUMENT SHALL BE REFERRED
TO (Indicate Controlling DoD Office Below).

DISTRIBUTION STATEMENT C:

DISTRIBUTION AUTHORIZED TO U.S. GOVERNMENT AGENCIES AND THEIR CONTRACTORS;
(Indicate Reason and Date Below). OTHER REQUESTS FOR THIS DOCUMENT SHALL BE REFERRED
TO (Indicate Controlling DoD Office Below).

DISTRIBUTION STATEMENT D:

DISTRIBUTION AUTHORIZED TO DOD AND U.S. DOD CONTRACTORS ONLY; (Indicate Reason
and Date Below). OTHER REQUESTS SHALL BE REFERRED TO (Indicate Controlling DoD Office Below).

DISTRIBUTION STATEMENT E:

DISTRIBUTION AUTHORIZED TO DOD COMPONENTS ONLY; (Indicate Reason and Date Below).
OTHER REQUESTS SHALL BE REFERRED TO (Indicate Controlling DoD Office Below).

DISTRIBUTION STATEMENT F:

FURTHER DISSEMINATION ONLY AS DIRECTED BY (Indicate Controlling DoD Office and Date
Below) or HIGHER DOD AUTHORITY.

DISTRIBUTION STATEMENT X:

DISTRIBUTION AUTHORIZED TO U.S. GOVERNMENT AGENCIES AND PRIVATE INDIVIDUALS
OR ENTERPRISES ELIGIBLE TO OBTAIN EXPORT-CONTROLLED TECHNICAL DATA IN ACCORDANCE
WITH DOD DIRECTIVE 5230.25, WITHHOLDING OF UNCLASSIFIED TECHNICAL DATA FROM PUBLIC
DISCLOSURE, 6 Nov 1984 (Indicate date of determination). CONTROLLING DOD OFFICE IS (Indicate
Controlling DoD Office).

The cited documents has been reviewed by competent authority and the following distribution statement is
hereby authorized.

A
(Statement)

OFFICE OF NAVAL RESEARCH
CORPORATE PROGRAMS DIVISION
ONR 353
800 NORTH QUINCY STREET
ARLINGTON, VA 22217-5660

(Controlling DoD Office Name)

(Reason)

DEBRA T. HUGHES
DEPUTY DIRECTOR
CORPORATE PROGRAMS OFFICE

Debra T. Hughes
(Signature & Typed Name)

(Assigning Office)

(Controlling DoD Office Address,
City, State, Zip)

19 SEP 1995

(Date Statement Assigned)