

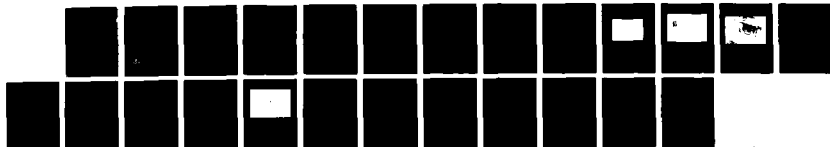
NO-A100 173

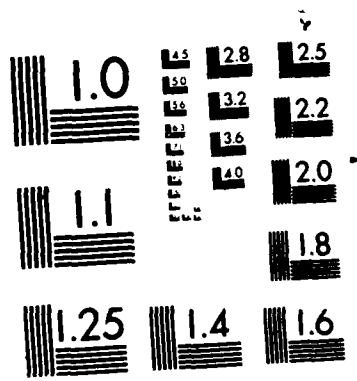
SAFETY EVALUATION OF LOCC/ROCC (NSC-6) NAVY SHF
SATELLITE COMMUNICATIONS SET (U) NAVAL SURFACE WEAPONS
CENTER SILVER SPRING MD S E BUCHHOLZ ET AL. 04 APR 84
NSWC/TR-84-174

UNCLASSIFIED

F/G 10/3

NL





MICROCOPY RESOLUTION TEST CHART
NATIONAL BUREAU OF STANDARDS-1963-A

NSWC TR 84-174

AD A180173

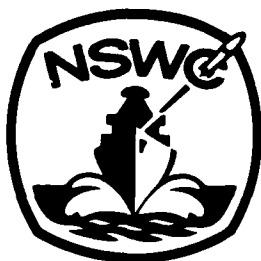
SAFETY EVALUATION OF LOCC/ROCC (WSC-6) NAVY SHF SATELLITE COMMUNICATIONS SET

BY S. E. BUCHHOLZ, J. A. BARNES, R. F. BIS,
F. C. DEBOLD, P. B. DAVIS, L. A. KOWALCHIK

RESEARCH AND TECHNOLOGY DEPARTMENT

4 APRIL 1984

Approved for public release; distribution unlimited.



NAVAL SURFACE WEAPONS CENTER

Dahlgren, Virginia 22448 • Silver Spring, Maryland 20910

UNCLASSIFIED

SECURITY CLASSIFICATION OF THIS PAGE (When Data Entered)

REPORT DOCUMENTATION PAGE		READ INSTRUCTIONS BEFORE COMPLETING FORM
1. REPORT NUMBER NSWC TR 84-174	2. GOVT ACCESSION NO.	3. RECIPIENT'S CATALOG NUMBER
4. TITLE (and Subtitle) SAFETY EVALUATION OF LOCC/ROCC (WSC-6) NAVY SHF SATELLITE COMMUNICATIONS SET		5. TYPE OF REPORT & PERIOD COVERED
		6. PERFORMING ORG. REPORT NUMBER
7. AUTHOR(s) S. E. BUCHHOLZ, J. A. BARNES, R. F. BIS, F. C. DEBOLD, P. B. DAVIS, L. A. KOWALCHIK		8. CONTRACT OR GRANT NUMBER(s)
9. PERFORMING ORGANIZATION NAME AND ADDRESS Naval Surface Weapons Center (Code R33) 10901 New Hampshire Avenue Silver Spring, MD 20903-5000		10. PROGRAM ELEMENT, PROJECT, TASK AREA & WORK UNIT NUMBERS OMN
11. CONTROLLING OFFICE NAME AND ADDRESS		12. REPORT DATE 4 April 1984
		13. NUMBER OF PAGES 25
14. MONITORING AGENCY NAME & ADDRESS (if different from Controlling Office)		15. SECURITY CLASS. (of this report) UNCLASSIFIED
		15a. DECLASSIFICATION/DOWNGRADING SCHEDULE
16. DISTRIBUTION STATEMENT (of this Report) Approved for public release; distribution is unlimited.		
17. DISTRIBUTION STATEMENT (of the abstract entered in Block 20, if different from Report)		
18. SUPPLEMENTARY NOTES		
19. KEY WORDS (Continue on reverse side if necessary and identify by block number) Navy SHF Satellite Communications Set Batteries LOCC/ROCC (WSC-6)		
20. ABSTRACT (Continue on reverse side if necessary and identify by block number) The battery for the LOCC/ROCC (WSC-6) Navy SHF Satellite Communications Set is evaluated for use in the fleet according to NAVSEAINST 9310.1A. The following tests are performed: forced discharge, short circuit, heat tape, and charging.		

DD FORM 1 JAN 73 1473

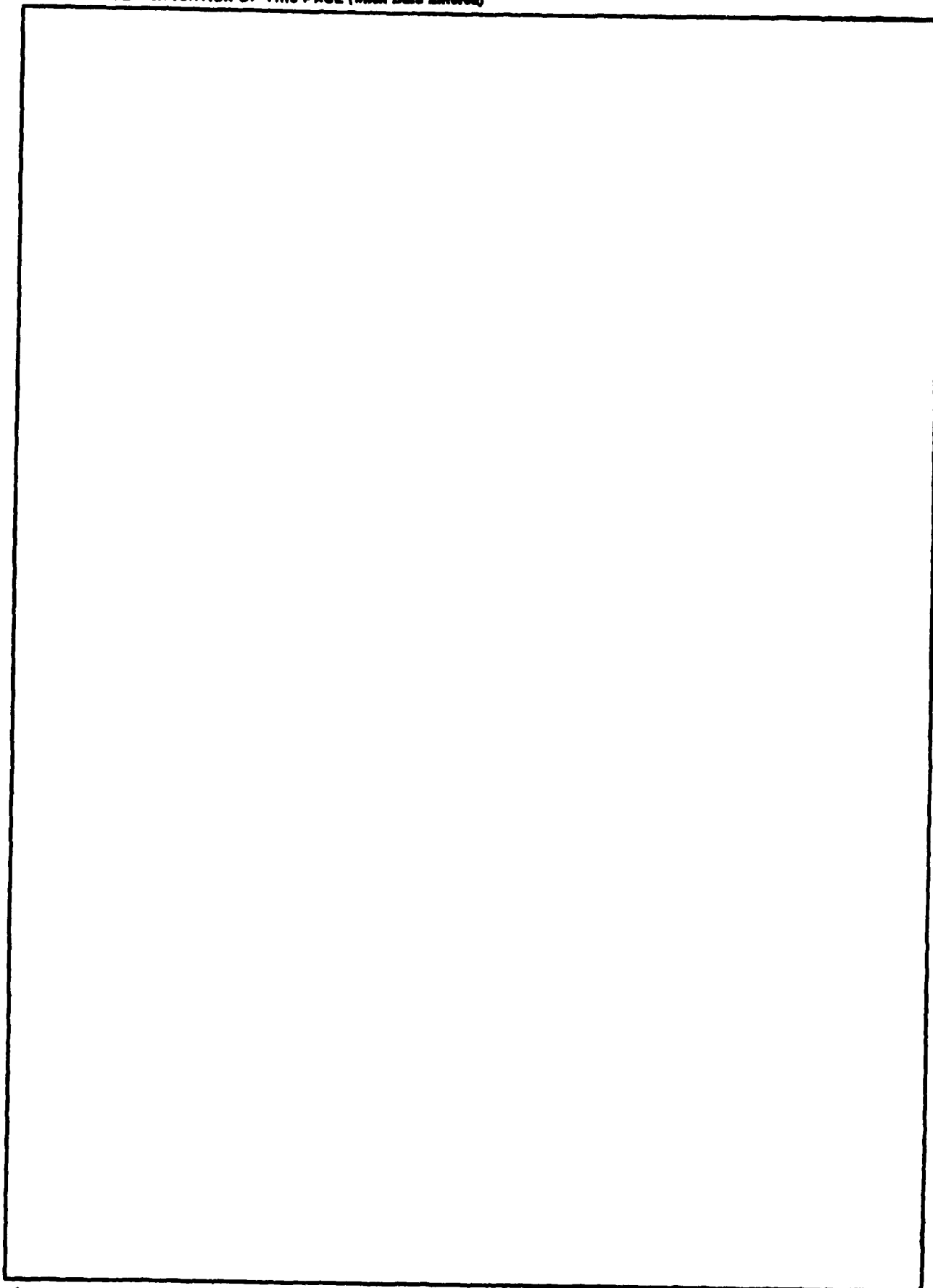
EDITION OF 1 NOV 65 IS OBSOLETE
S/N 0102-LF-014-6601

UNCLASSIFIED

SECURITY CLASSIFICATION OF THIS PAGE (When Data Entered)

UNCLASSIFIED

SECURITY CLASSIFICATION OF THIS PAGE (When Data Entered)



S/N 0102- LF- 014- 6601

UNCLASSIFIED

SECURITY CLASSIFICATION OF THIS PAGE(When Data Entered)

FOREWORD

This work was performed for and funded by the Naval Electronic Systems Command. The safety testing was performed on the Eagle-Picher backup memory battery for a LOCC/ROCC (WSC-6) Navy SHF satellite communications set. The testing was carried out to determine if the LOCC/ROCC (WSC-6) set was safe to ship and deploy as configured. The tests presented in this report follow the guidelines set forth in NAVSEAINST 9310.1A.

Approved by:


JACK R. DIXON, Head
Materials Division

CONTENTS

<u>Chapter</u>		<u>Page</u>
1	INTRODUCTION	1
2	EXPERIMENTAL	3
3	RESULTS	9
4	CONCLUSIONS	15

ILLUSTRATIONS

<u>Figure</u>		<u>Page</u>
1	COMMUNICATIONS SET DRAWER	4
2	BATTERY AND CIRCUIT BOARD	5
3	MOCK-UP OF THE INSIDE OF A COMMUNICATIONS SET DRAWER	6
4	CIRCUIT DIAGRAM FOR A SHORT CIRCUIT	7
5	CIRCUIT DIAGRAM FOR A FORCED DISCHARGE AT 125 mA	7
6	CIRCUIT DIAGRAM FOR A CHARGING CIRCUIT	7
7	SHORT CIRCUIT	10
8	FORCED DISCHARGE WITH CASE IN COMMUNICATIONS SET DRAWER	11
9	HEAT TAPE TEST	12
10	RESULTS OF HEAT TAPE TEST	13
11	CHARGING TEST	14

CHAPTER 1

INTRODUCTION

The Eagle-Picher 3V $[(\text{Li}/(\text{CF})_x)]$ Keeper battery was selected for use on a printed circuit board to function as the keep alive memory for a Navy SHF Satellite Communications Set (AN/WSC-6). The system was developed under Contract N00039-82-C-0243. The work was done in accordance with the requirements laid out in NAVSEAINST 9310.1A. The minimum requirement of nine tests were completed: three short circuit, three forced discharge, and three heat tape. Also performed were two charging tests: one on a fresh cell and one on a partially discharged cell.

CHAPTER 2

EXPERIMENTAL

Nine tests were run, three Short Circuit, three Forced Discharge, and three Heat Tape. One of each of these tests was performed on the battery outside the drawer in which it is used. Two of each of these tests were performed with the battery in the drawer (See Figure 1). In each case, the battery was on a printed circuit board (See Figure 2). To see the relative location of the battery with respect to the other circuit boards and other equipment in the mock-up drawer, refer to Figure 3. One thermocouple was placed on each side of the battery. Temperature, voltage, and current were monitored on a Fluke datalogger and recorded on a Columbia 300C. The circuits used for the short circuit test and forced discharge are shown in Figures 4 and 5, respectively.

Also, charging tests were conducted on a fresh cell as well as a partially discharged cell. The charging circuit used is shown in Figure 6. The cells were charged at 125 mA with the voltage limited to 5V.

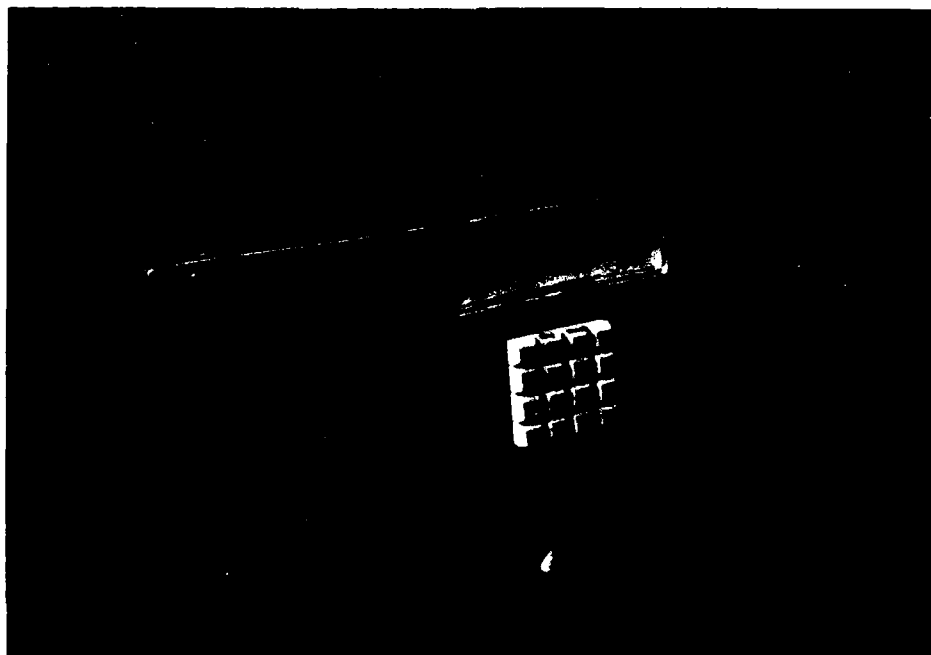


FIGURE 1. COMMUNICATIONS SET DRAWER.

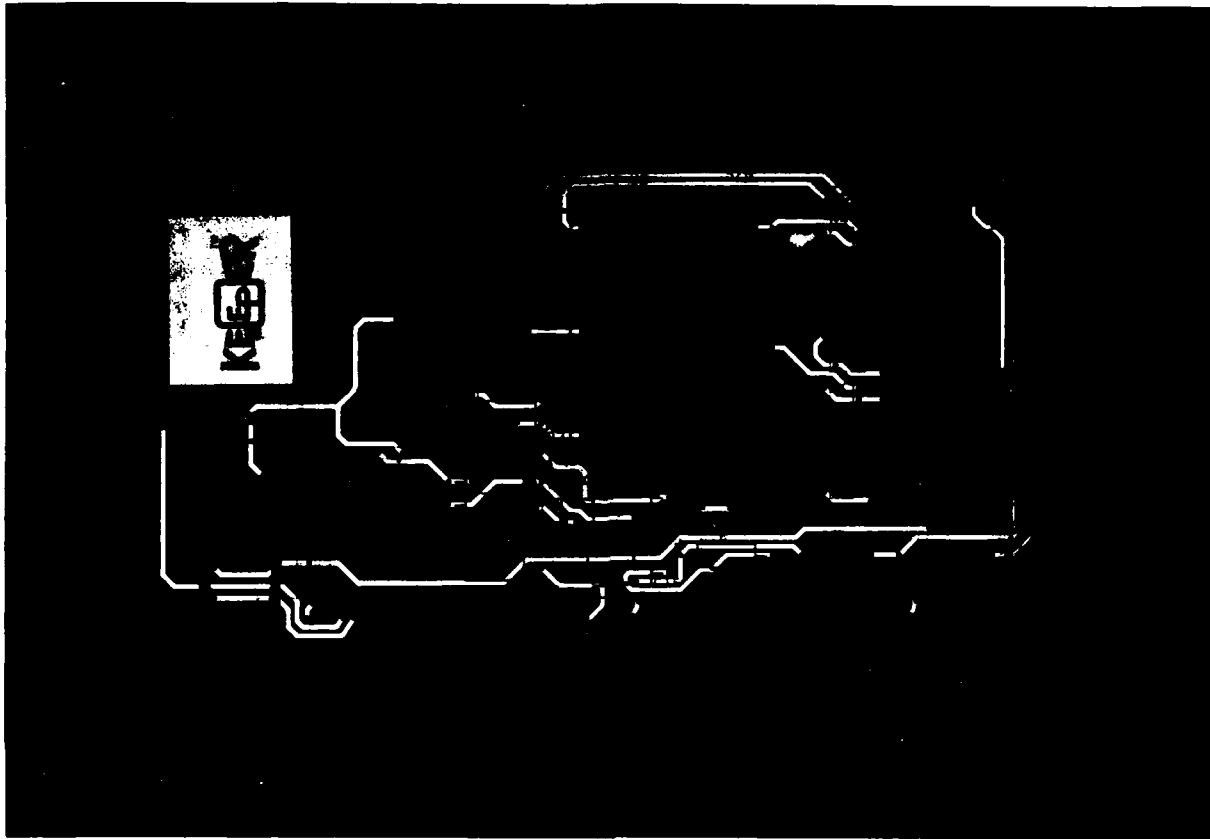


FIGURE 2. BATTERY AND CIRCUIT BOARD.

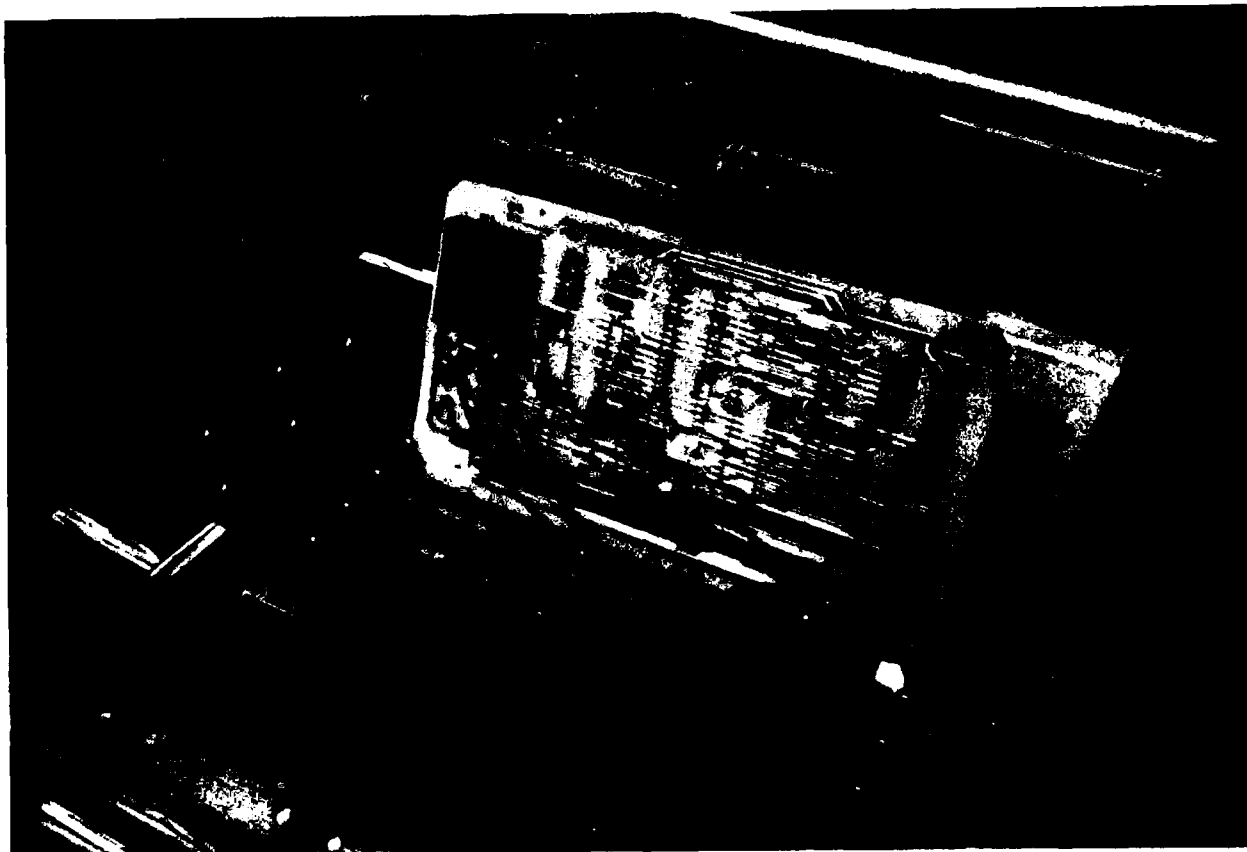


FIGURE 3. MOCK-UP OF THE INSIDE OF A COMMUNICATIONS SET DRAWER

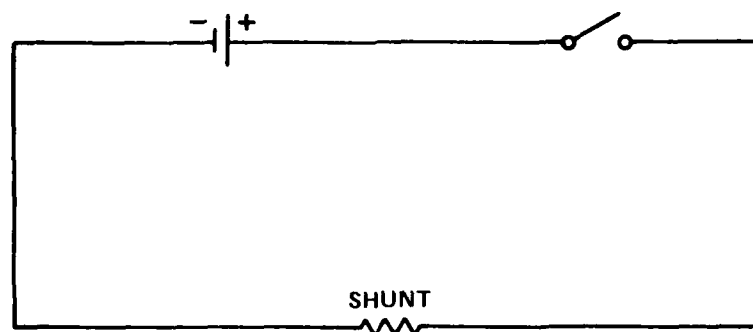


FIGURE 4. CIRCUIT DIAGRAM FOR A SHORT CIRCUIT

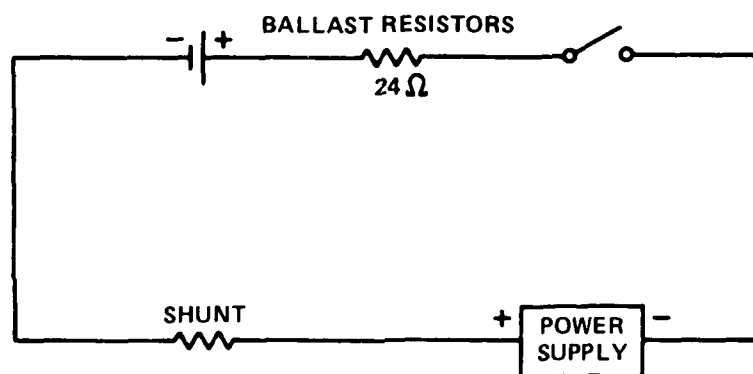


FIGURE 5. CIRCUIT DIAGRAM FOR A FORCED DISCHARGE AT 125 mA

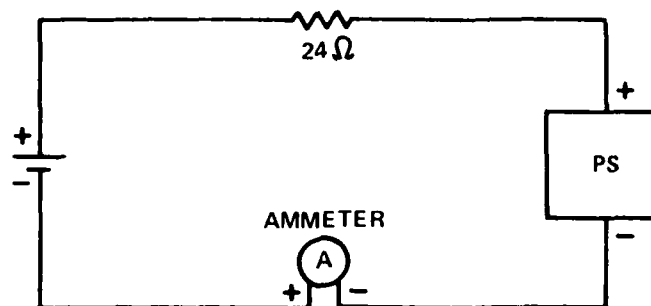


FIGURE 6. CIRCUIT DIAGRAM FOR A CHARGING CIRCUIT AT 125mA

CHAPTER 3

RESULTS

There was no significant difference between the tests run on the batteries inside or outside the unit.

In the short circuit test, the battery voltage dropped immediately to between 0.07 and 0.11 volt and continued to drop slowly. The battery heated slightly, reaching a peak temperature of between 34.4°C and 36°C. A representative graph is shown in Figure 7. No evidence of hazardous reaction or visible flame was apparent.

In the first forced discharge test, the battery voltage dropped immediately to 1.59 volts and continued to decrease slowly after that. The battery reached a peak temperature of 38.6°C seventeen minutes into the test. In the second forced discharge test, the voltage dropped immediately to 1.24 volts and continued to decrease slowly. The battery reached a peak temperature of 35.2°C eight minutes into the test. There was no reaction or flame generated during any of the three tests. A representative graph of the forced discharge tests is shown in Figure 8.

Lengths of heat tape were wrapped around the battery and around the section of the circuit board immediately behind the battery. The battery was heated at a rate of 6°C/min. Two of the batteries vented at 240°C approximately 38 minutes into the test. They vented again shortly after that. There was a relatively small amount of smoke. The third battery vented at 204°C approximately 26 minutes into the test with a relatively small amount of smoke. A graph of the test results is shown in Figure 9. A representative cell is shown in Figure 10. There were no differences between tests run on the batteries inside or outside the unit.

Without violent reaction, a fresh cell was discharged for 4 hours with a 24 Ω resistor. The battery was charged at 125 mA for 4 hours. Before the charging test began, the voltage had recovered to a value of 2.729 volts. During the charging tests, no hazardous reactions were observed. The cell was then discharged at 125 mA. The voltage decreased rapidly toward zero. The details of the charging experiment are shown in Figure 11.

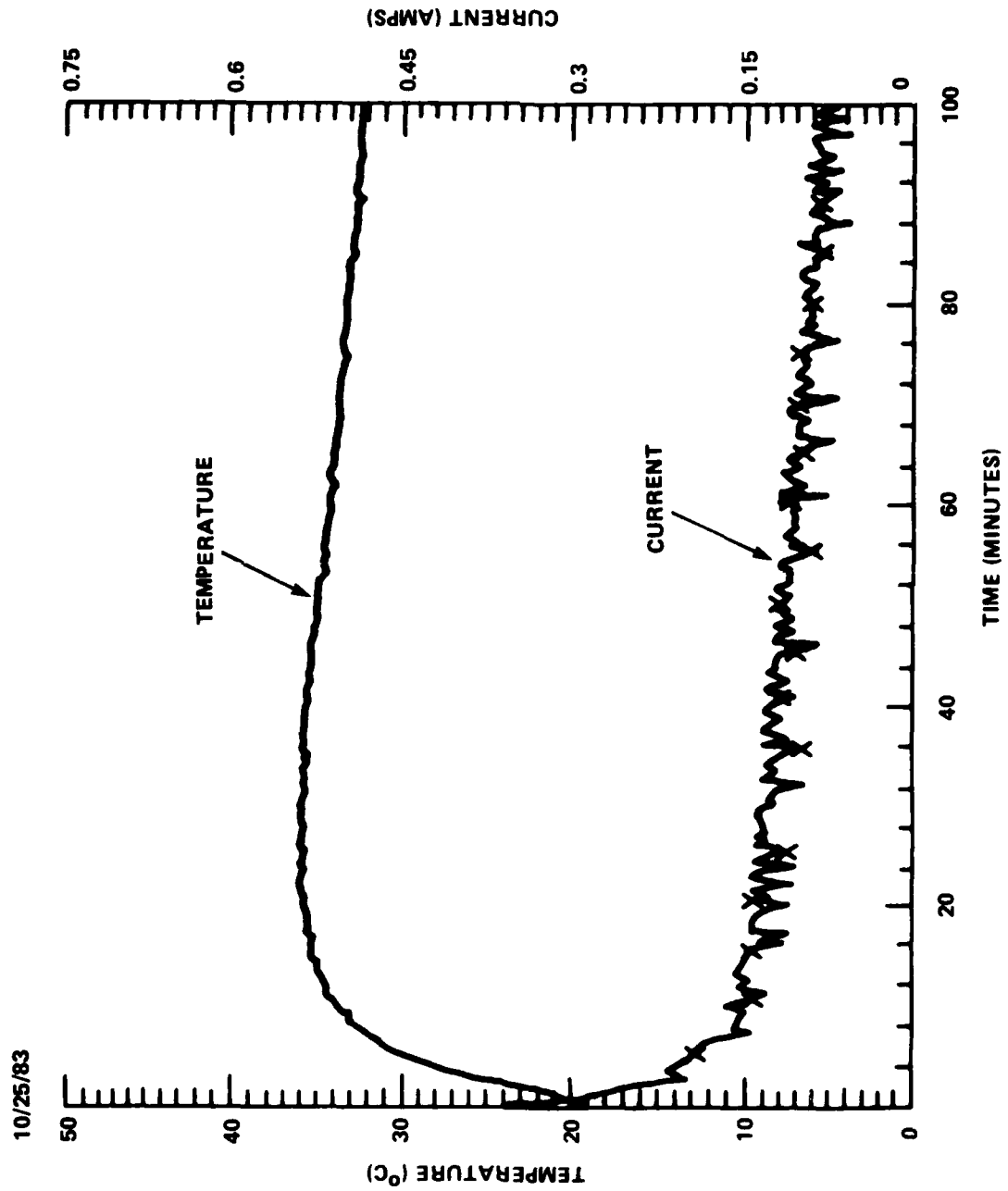


FIGURE 7. SHORT CIRCUIT

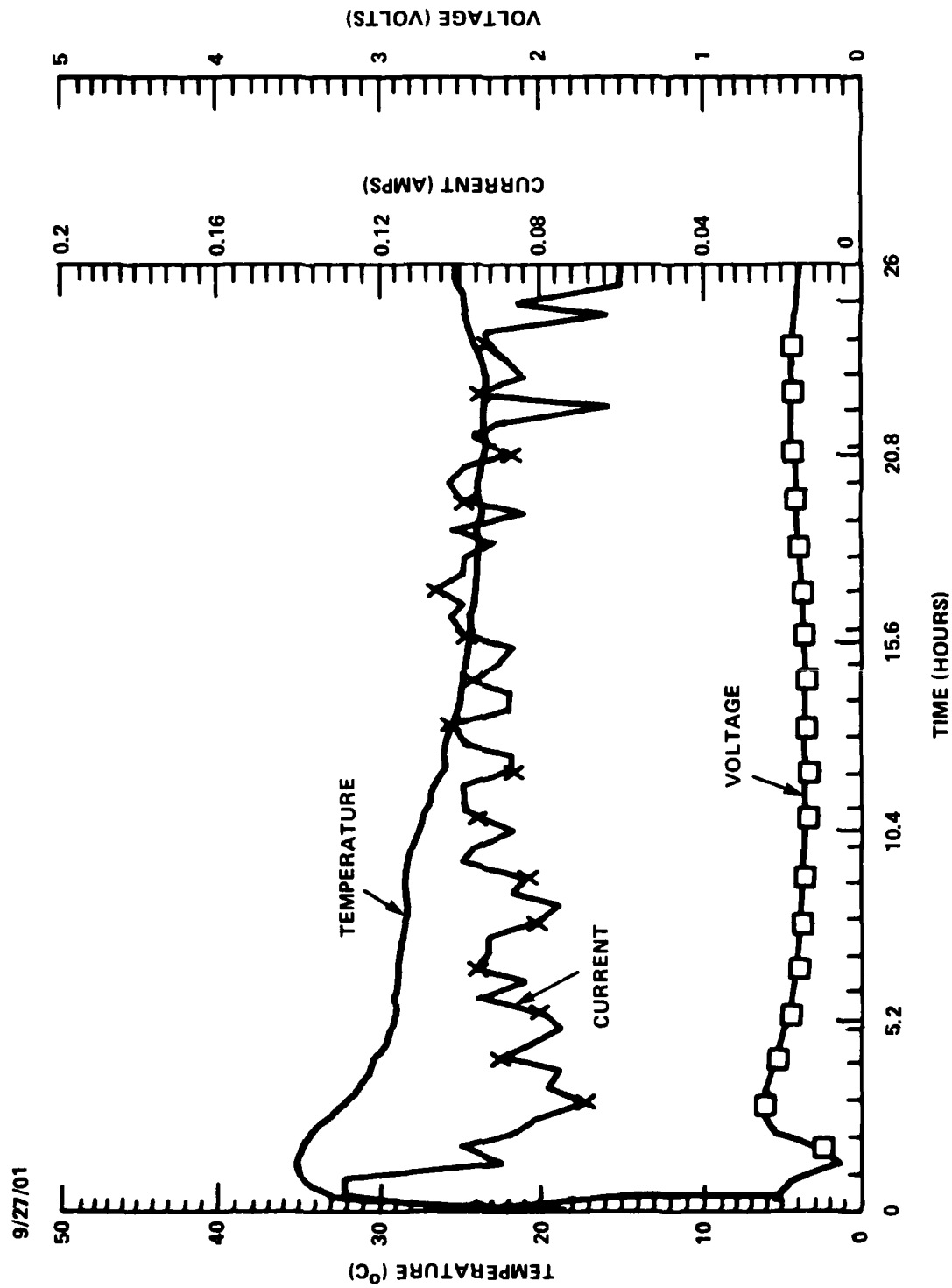


FIGURE 8. FORCED DISCHARGE WITH CASE IN COMMUNICATIONS SET DRAWER

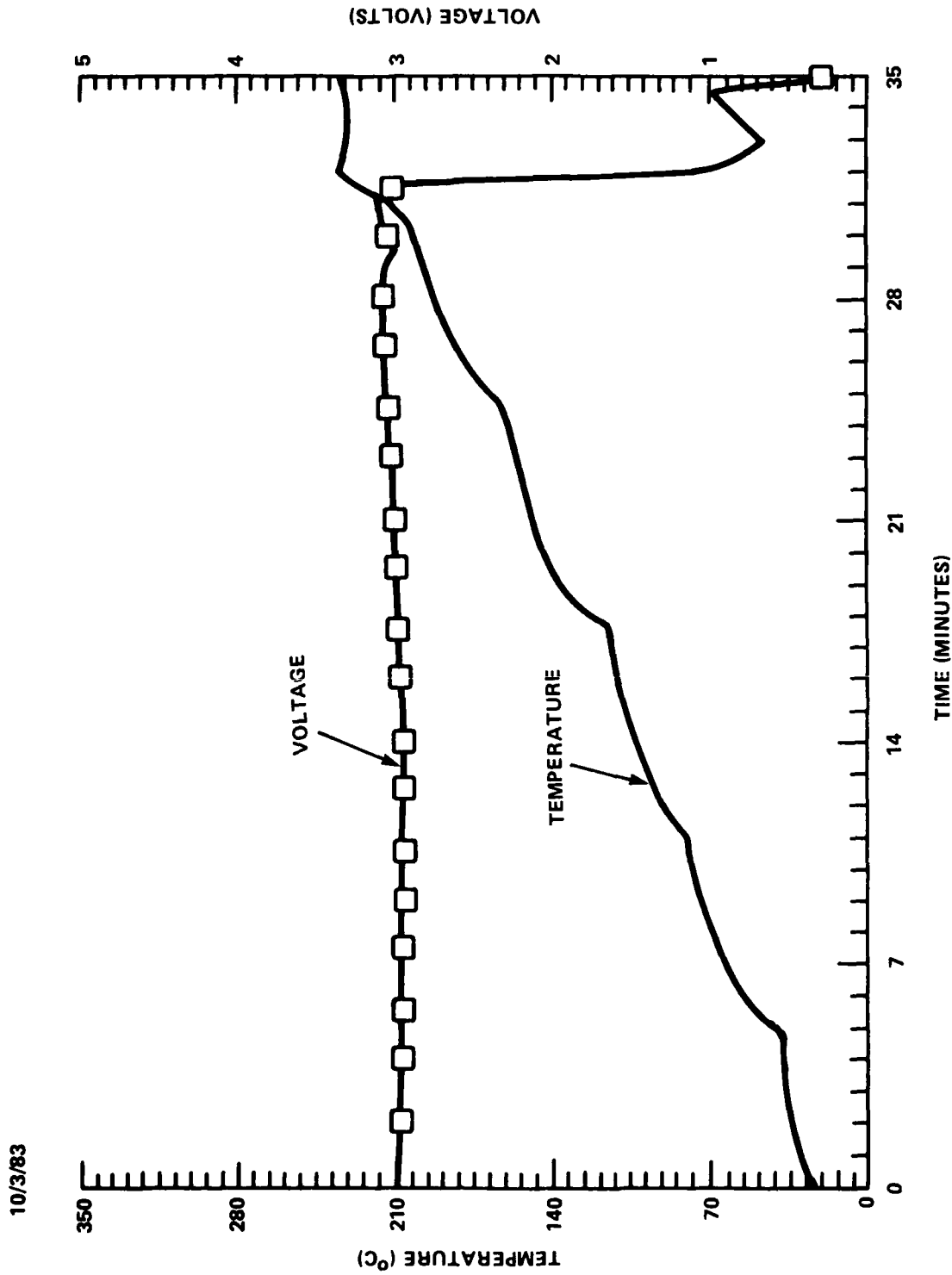


FIGURE 9. HEAT TAPE TEST

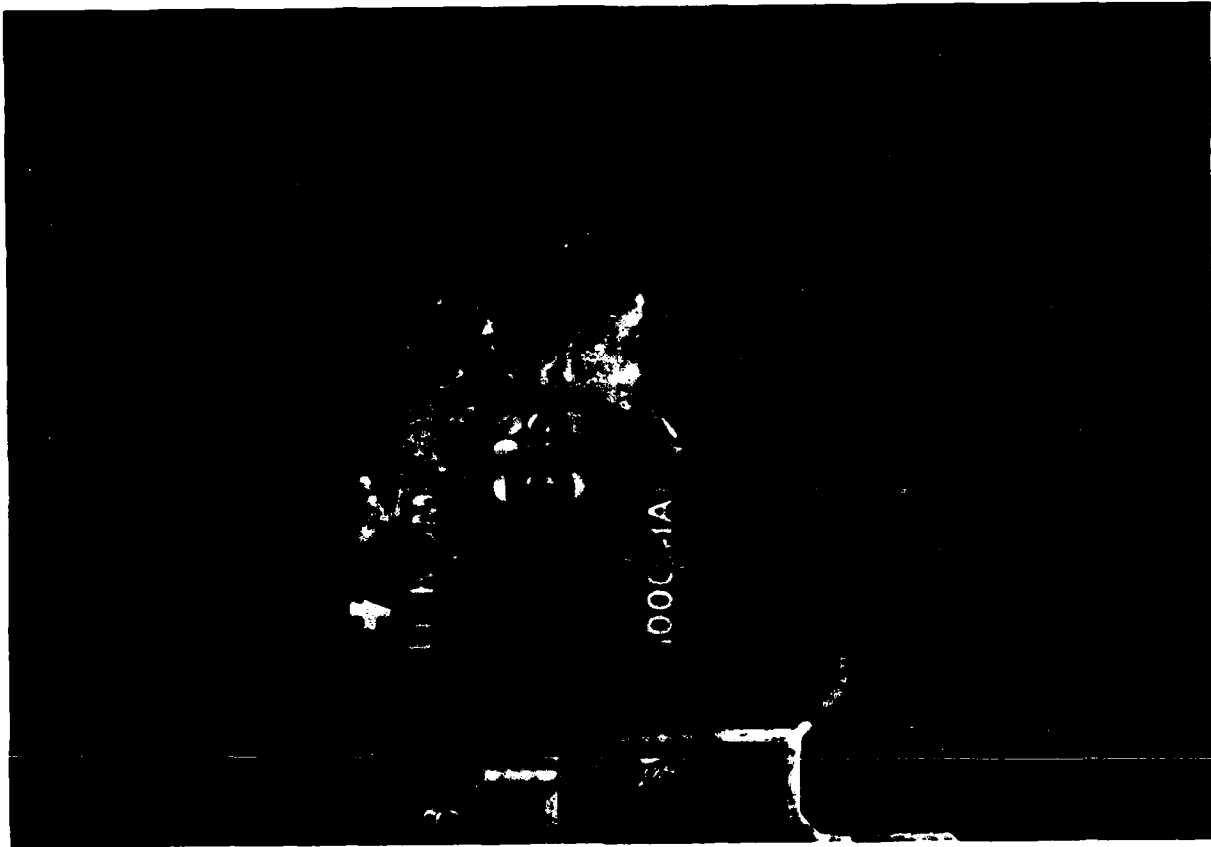


FIGURE 10. RESULTS OF HEAT TAPE TEST.

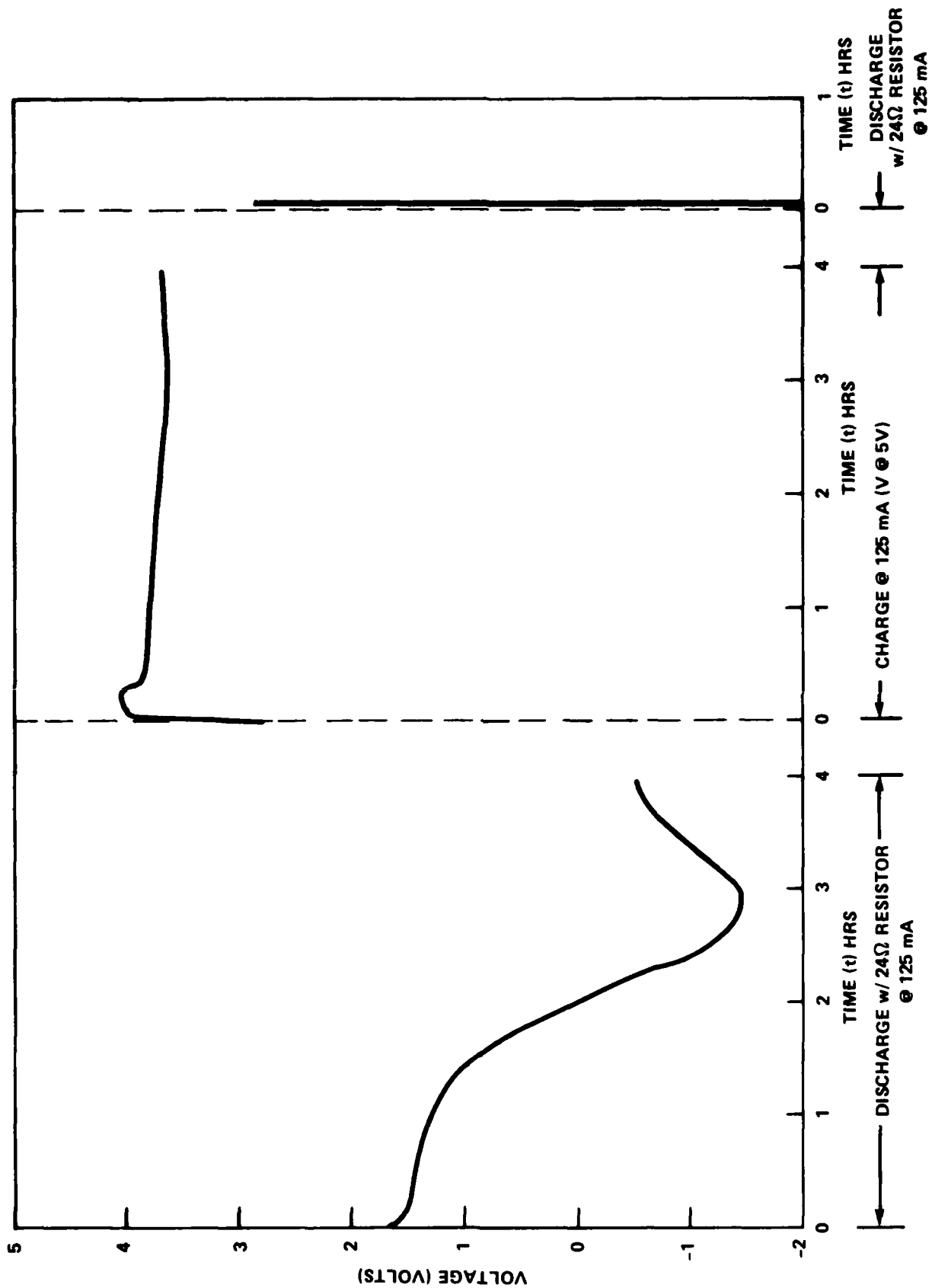


FIGURE 11. CHARGING TEST.

CHAPTER 4

CONCLUSIONS

Based on the test data discussed in this report, a recommendation for service use has been made to NAVSEA 06H. The results indicate that the Eagle-Picher 3V $[(\text{Li}/(\text{CF})_x)]$ Keeper battery is abuse-resistant under the tests conditions described here.

DISTRIBUTION

	<u>Copies</u>		<u>Copies</u>
Commander		Commander	
Naval Sea Systems Command		Naval Weapons Center	
Attn: Sea 63R3	1	Attn: Code 38 (E. Royce)	1
Sea 63X12 (J. Lascody)	1	Code 3852	1
Sea 9823	1	Code 3626 (W. Haight)	1
Sea 65321 (H. Holter)	2	China Lake, CA 93555	
Sea 09G32	2		
Sea 921AN	1	Office of Naval Research	
Sea 543	1	Attn: ONR 472 (G. Neece)	2
Washington, DC 20362		800 N. Quincy Street	
		Arlington, VA 22217	
Commander		Commander	
Naval Ocean Systems Center		Naval Intelligence Support Center	
Attn: Code 19 (CAPT M Dorman)	1	Attn: Code 362 (H. Ruskie)	1
Code 922	1	Washington, DC 20390	
Code 712 (J. McCartney)	1		
San Diego, CA 92152		Office of Navy Technology	
Commander		Associate Director	
Naval Weapons Support Center		Attn: Support Technology (072)	1
Electrical Power Sources Division		800 N. Quincy Street	
Attn: Code 3054 (S. Shuler)	1	Arlington, VA 22217	
Crane, IN 47522		Chief of Naval Operations	
Commander		Operating Evaluation Group	1
Space and Naval Warfare Systems		Washington, DC 20350	
Command		Commander	
Attn: Code PME124-31 (A. Sobel)	1	Naval Air Development Center	
Code PME 106-13B (W. McCabe)	1	Attn: Library	1
SPAWAR 01K (A. Sliwa)	1	Warminster, PA 18974	
40736 (W. Weingartner)	1		
Washington, DC 20363-5100		Defense Technical Information Center	
Commander		Cameron Station	12
Naval Underwater Systems Center		Alexandria, VA 22314	
Attn: Code 3642 (R. Lazar)	2		
(J. Moden)	1		
Newport, RI 02840			

DISTRIBUTION (Cont.)

	<u>Copies</u>		<u>Copies</u>
Jet Propulsion Laboratory		EIC Corporation	
Attn: MS 277-102 (G. Halpert)	2	Attn: K. M. Abraham	1
4800 Oak Grove Drive		111 Downey Street	
Pasadena, CA 911909		Norwood, MA 02062	
Saft America Inc.		Mare Island Naval Ship Yard	
Advanced Battery Systems		Attn: Code 280.08 Stop 060	
Attn: Franklin C. Regan	1	(R. Houlder)	1
107 Beaver Court		Vallejo, CA 94592	
Cockeysville, MD 21030			
U. S. Army Laboratory Command		David W. Taylor Naval Ship and	
Attn: Code SLET-PB (T. Reiss)	1	Development Center	
Code SLCET-PR (S. Gilman)	1	Annapolis Laboratory	
Fort Monmouth, NJ 07703		Attn: Code 2724 (H. R. Urbach)	1
		Code 2724 (R. Bloomquist)	1
		Annapolis, MD 21401	
Air Force Aero Propulsion Laboratory		NOAA Data Buoy Center	
Attn: AFWAL/POOC-1 (W. S. Bishop)	1	Attn: D. Scully	1
AFAPL/OPE-1 (D. Marsh)	1	NSTL Station, MS 39529	
Wright Patterson AFB, OH 45433			
NASA Johnson Space Center		U. S. Army HQDA-DAEN-ASR-SL	
Attn: Code EP5 (B. J. Bragg)	1	Washington, DC 20314	1
NASA Road 1			
Houston, TX 77058		Norton Air Force Base	
National Bureau of Standards		Attn: Code BMO/ENBE	1
Attn: William Dorko	1	Code AFISC/SES	1
B 364 (CHEM)		Norton AFB, CA 92409	
Washington, DC 20234			
Panasonic Industrial Company		NASA Goddard Space Flight Center	
Attn: R. Morioka	1	Attn: Code 711	1
P. O. Box 1511		Greenbelt, MD 20771	
Secaucus, NJ 07094			
Wilson Greatbatch Ltd.		NASA Langley	
Attn: P. Krall	1	Attn: MS 433 (J. Gowdey)	1
10000 Wehrle Drive		Hampton, VA 23665	
Clarence, NY 14031			
		Central Intelligence Agency	
		Attn: OTS (C. Schuilla)	1
		Washington, DC 20505	

DISTRIBUTION (Cont.)

	<u>Copies</u>		<u>Copies</u>
Headquarters			
Department of Transportation		Martin Marietta Aerospace	
U. S. Coast Guard		Attn: John Wear	1
Ocean Engineering Division		P. O. Box 179	
Attn: GEOE-3/61 (R. Potter)	1	Denver, CO 80201	
Washington, DC 20590			
Magnavox		Teledyne Electronics	
Department 529		Attn: G. Lamb	1
Attn: Carl Keuneke	1	649 Lawrence Drive	
1313 Production Road		Newbury Park, CA 91320	
Fort Wayne, IN 46808			
McDonnell Douglas Corporation		Duracell U. S. A.	
1150 17th Street NW		Attn: Glenn Cruze	1
Suite 500		Technical Sales Marketing Group	
Washington, DC 20036	1	Berkshire Industrial Park	
		Bethel, CT 06801	
Gould Incorporated		Power Conversion Incorporated	
Gould Laboratories		495 Boulevard	
40 Gould Center		Elmwood Park, NJ 07407	1
Rolling Meadows, IL 60000	1		
The Aerospace Corporation		Lockheed Palo Alto Research	
Attn: H. F. Bittner	1	Laboratory	
MS/275		Lockheed Missiles and Space	
P. O. Box 92957		Company Incorporated	
Los Angeles, CA 90009		Attn: Library	1
		3251 Hanover Street	
		Palo Alto, CA 94304	
Honeywell Incorporated		General Electric Company	
Power Sources Center		Attn: R. W. Race	1
Attn: Library	1	Manager Advance Programs	
104 Rock Road		Marketing	
Horsham, PA 19044		Room 2544A-OP#2	
		100 Plastics Avenue	
The Boeing Company		Pittsfield, MA 01201	
Attn: A. C. Johnson	1		
P. O. Box 3707		Acoustic Systems Incorporated	
Seattle, WA 98124		Attn: J. Fish	1
		600 Norman Firestone Road	
GTE Laboratories Incorporated		Goleta, CA 93177	
Attn: Library	1		
40 Sylvan Road			
Waltham, MA 02154			

DISTRIBUTION (Cont.)

	<u>Copies</u>		<u>Copies</u>
Honeywell Power Sources Center Attn: D. Chua 104 Rock Road Horsham, PA 19044	1	Navy Environmental Health Center Attn: J. R. Crawl, Head Hazardous Material Evaluation Branch Naval Station Norfolk, VA 23511	1
Battery Engineering Attn: N. Marincic 80 Oak Street Newton, MA 02164	1	Sparton Electronics Attn: C. H. Bush 2400 East Ganson Street Jackson, MI 49202	1
GTE Sylvania Attn: R. McDonald 189 B Street Needham Heights, MA 02194	1	Sanders Associates Attn: G. Disco 95 Canal Street Nashua, NH 03061	1
Altus Corporation 1610 Crane Court San Jose, CA 95112	1	Sonatech Incorporated Attn: R. Cyr 700 Francis Botello Road Goleta, CA 93017	1
Yardney Electric Corporation Attn: Library 82 Mechanic Street Pawcatuck, CT 02891	1	Internal Distribution: R30 R33 (Files) R33 (Staff) R33 (Bis) E35 E231 E232	1 1 20 70 1 9 3
Duracell U. S. A. Laboratory for Physical Science Attn: Library Burlington, MA 01803	1		
Eagle-Picher Industries Couples Department Attn: Library Joplin, MO 64801	1		
Advance Battery Group ATTN: R. Murphy 269 Westwood Street Lancaster, NY 14086	1		
Ray-O-Vac Attn: R. F. Udell B. C. Bergum 101 East Washington Street Madison, WI 53703	1 1		

END

7-87

DTIC