

AD-A188 128

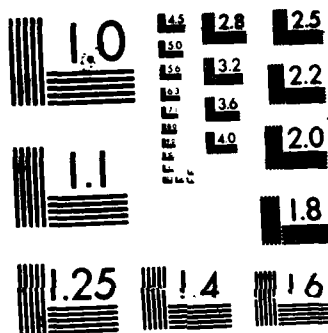
USING DATA DEVELOPMENT ANALYSIS TO MEASURE THE
EFFICIENCY OF NOT-FOR-PROF (U) TEXAS UNIV AT AUSTIN
CENTER FOR CYBERNETIC STUDIES T AMN ET AL MAR 87
CCS-565 N00014-86-C-0398 F/G 12/2

1/1

UNCLASSIFIED

NL





MICROCOPY RESOLUTION TEST CHART
NATIONAL BUREAU OF STANDARDS-1963-A

AD-A180 128

(12)

Research Report CCS 565

USING DATA ENVELOPMENT ANALYSIS TO MEASURE
THE EFFICIENCY OF NOT-FOR-PROFIT ORGANIZATION
A CRITICAL EVALUATION-COMMENT

by

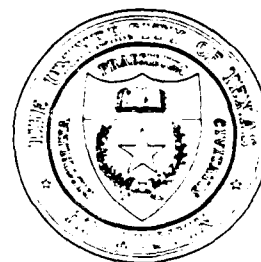
T. Ahn
A. Charnes
W.W. Cooper

CENTER FOR CYBERNETIC STUDIES

The University of Texas
Austin, Texas 78712

DTIC
ELECTE
S MAY 11 1987 D

DISTRIBUTION STATEMENT A
Approved for public release
Distribution Unlimited



07 5 8_060

12

Research Report CCS 565

USING DATA ENVELOPMENT ANALYSIS TO MEASURE
THE EFFICIENCY OF NOT-FOR-PROFIT ORGANIZATIONS:
A CRITICAL EVALUATION-COMMENT

by

T. Ahn
A. Charnes
W.W. Cooper

March 1987

DTIC
ELEC
S MAY 11 1987
D

This research was partly supported by ONR Contracts N00014-86-C-0398 and N00014-82-K-0295, and National Science Foundation Grants SES-8408134 and SES-8520806 with the Center for Cybernetic Studies, The University of Texas at Austin. Reproduction in whole or in part is permitted for any purpose of the United States Government.

DISTRIBUTION STATEMENT A
Approved for public release;
Distribution Unlimited

CENTER FOR CYBERNETIC STUDIES

A. Charnes, Director

College of Business Administration, 5.202
The University of Texas at Austin
Austin, Texas 78712-1177
(512) 471-1821

ABSTRACT

This note responds to Nunamaker (1985) who supposedly deals with deficiencies in Data Envelopment Analysis (DEA) as an approach for (i) measuring efficiencies of not-for-profit entities identified as Decision Making Units (DMUs) and (ii) locating sources and amounts of inefficiencies in each of the inputs used and in each of the outputs produced by each DMU. Corrections and comments are offered with references supplied for interested readers who wish to examine more detailed treatments of the topics covered.



KEYWORDS :

Data Envelopment Analysis
CCR Ratio Model
Pareto-Koopmans Efficiency

Accession For	
NTIS CRA&I	<input checked="checked" type="checkbox"/>
DTIC TAB	<input type="checkbox"/>
Unannounced	<input type="checkbox"/>
Justification	
By	
Distribution/	
Availability Codes	
Dist	Avail and/or Special
A-1	

Nunamaker's (1985) critical evaluation of DEA is erroneous in its interpretation of the concept of Pareto-Koopmans efficiency as introduced by Charnes, Cooper and Rhodes (1978) for use in DEA. This turns out to seriously affect what Nunamaker has to say and is accompanied by other inadequacies and misleading characterizations of DEA.

In this comment we focus on Nunamaker's interpretations of the Pareto-Koopmans efficiency concept for which we use the following DEA model:

$$\begin{aligned}
 & \min \quad \theta & -\epsilon \sum_{i=1}^m s_i^- & -\epsilon \sum_{r=1}^s s_r^+ \\
 & \text{subject to} \\
 & \theta x_{io} = \sum_{j=1}^n x_{ij} \lambda_j + s_i^-, \quad i=1, \dots, m, \\
 & y_{ro} = \sum_{j=1}^n y_{rj} \lambda_j - s_r^+, \quad r=1, \dots, s,
 \end{aligned}
 \tag{1}$$

where the variables to be determined are $\lambda_j \geq 0$, $j=1, \dots, n$; $s_i^- \geq 0$, $i=1, \dots, m$; $s_r^+ \geq 0$, $r=1, \dots, s$; and θ is not constrained in sign. This model, apart from some changes in the symbols, is the same as version (2) in Nunamaker. It is obtained from the CCR ratio form of Charnes, Cooper and Rhodes (1978) by using the theory of fractional programming as given in Charnes and Cooper (1962).

The above formulation is the one that originally gave rise to the name Data Envelopment Analysis.^{1/} The reasons underlying the

choice of this name are seen by noting that the above optimization envelops from above the observed output values y_{r0} , $r=1, \dots, s$, for the decision making unit (DMU) being evaluated, and it also envelops its input values x_{i0} , $i=1, \dots, m$, from below, with the latter also being adjusted by the "scale" or "intensity" variable θ .

Denoting optimal values by a star, Nunamaker proceeds on the assumption that $\theta^*=1$ is necessary and sufficient for Pareto-Koopmans efficiency and this leads him to believe that this concept contains a "subtle yet important weakness...as used by DEA." However, as noted on p. 433 of Charnes, Cooper and Rhodes (1978) there are two conditions which must be fulfilled for Pareto-Koopmans efficiency: (i) $\theta^*=1$ and (ii) the slack variables s_i^{-*} and s_r^{+*} in (1) must all be zero. In short, $\theta^*=1$ is a necessary but not a sufficient condition.

To see how the presence of slack enters into the Pareto-Koopmans efficiency condition, let it be supposed that an optimum is achieved with $\theta^*=1$ but some $s_i^{-*} > 0$. Such a solution means that it is possible to replace the observed x_{i0} with a new $\hat{x}_{i0} = x_{i0} - s_i^{-*} < x_{i0}$ and it is therefore possible to reduce this observed x_{i0} input value without disturbing any other value in any of the constraints. Hence DMU_0 cannot be characterized as Pareto-Koopmans efficient even with $\theta^*=1$.

Similar remarks apply to the presence of non-zero output slack. Indeed, it is possible to have an optimum in which both output and input slacks may be non-zero, in which case outputs may be augmented and inputs may be decreased simultaneously. Inefficiency in the sense of Pareto-Koopmans optimality would then be present in both outputs and inputs.

The two conditions for efficiency noted above may be simultaneously represented by rewriting the functional in (1) in the following form:

$$(2) \quad h_o = \theta - \epsilon \sum_{i=1}^m s_i^- - \epsilon \sum_{r=1}^s s_r^+$$

and then setting the objective as $\min h_o$. Defining $\epsilon > 0$ as a non-Archimedean infinitesimal in this expression for the functional provides access to the Non-Archimedean Efficiency theorem as given in Charnes and Cooper (1985),^{2/} which we now summarize by denoting optimal values with a star and writing

$$(3) \quad \min h_o = h_o^* = \theta^* - \epsilon \sum_{i=1}^m s_i^{-*} - \epsilon \sum_{r=1}^s s_r^{+*} \leq 1,$$

with $h_o^* = 1$ if and only if DMU_o is efficient. Note that $h_o^* = 1$ implies $\theta^* = 1$. On the other hand it is possible to have $\theta^* = 1$ and $h_o^* < 1$, in which case efficiency is not achieved because some of the optimal slack values are not zero.

Nunamaker's central proposition is that when a DMU has been accorded efficient status by DEA, then introducing a new variable will never alter this previously achieved efficient status. This is not correct, as will now be shown by means of the following simple example:

$$\begin{aligned}
 \min h_o &= \theta & -\epsilon s_1^+ & -\epsilon s_1^- \\
 \text{subject to} & & & \\
 (4) \quad 1 &= \lambda_1 + \lambda_2 - s_1^+ \\
 \theta &= \lambda_1 + \lambda_2 + s_1^- \\
 \lambda_1, \lambda_2, s_1^+, s_1^- &\geq 0.
 \end{aligned}$$

In this example we are considering 2 DMUs which we identify via subscripts as DMU_1 and DMU_2 , each of which uses a single input in unit amount, as shown in the second constraint of (4), to produce a single output in a unit amount, as represented in the first constraint. Their output and input values being the same, DMU_1 and DMU_2 are evidently both efficient with

$$(5) \quad \min h_o = h_o^* = \theta^* = 1$$

and all slack at zero value when evaluating either DMU_1 or DMU_2 .

Now suppose another variable is added with data as exhibited in the third constraint in the following model where DMU_1 is being evaluated:

$$\begin{aligned}
 \min h_o' &= \theta & -\epsilon s_1^+ & -\epsilon s_1^- & -\epsilon s_2^- \\
 \text{subject to} & & & & \\
 (6) \quad 1 &= \lambda_1 + \lambda_2 - s_1^+ \\
 \theta &= \lambda_1 + \lambda_2 + s_1^- \\
 2\theta &= \lambda_1 + \lambda_2 + s_2^- \\
 \lambda_1, \lambda_2, s_1^+, s_1^-, s_2^- &\geq 0.
 \end{aligned}$$

Evidently $\lambda_1=1$ and $\lambda_2=1$ will continue to satisfy the constraints with $s_2^- = 1$ required to supplement the choice of $\lambda_2=1$ in the latter case. These are not alternate optima, however, since the choice of $\lambda_1 = 1$ does not maximize the slacks, and hence it does not minimize h'_0 . The latter is achieved only for $\lambda_2^* = 1$, $s_2^{-*} = 1$ and $\theta^* = 1$ so that:

$$(7) \quad \min h'_0 = h'^*_0 = \theta^* - \epsilon s_2^{-*} < h^*_0 = 1.$$

Hence, contradicting Nunamaker's central proposition, DMU_1 has lost its efficient status when the data for this new variable are introduced in the course of moving from (4) to (6).

As Nunamaker notes, it is possible for a DMU to be rated as efficient with $h^*_0=1$ when one of its inputs is "small" and another of its inputs is "very large." This is a requisite of the concept of Pareto-Koopmans efficiency which, as used in DEA, avoids the need for assigning a priori systems of weights to reflect the relative importance of different inputs (as in index numbers). DEA also avoids the need for explicitly stipulating the functional forms that are supposed to relate the variables to each other (as in regression systems). Furthermore, the DEA efficiency ratio is independent of the units of measurement of inputs and outputs, as shown in Charnes and Cooper (1980) and Charnes and Cooper (1985). Thus, by changing these units one can get some small and some large as desired for any purpose without affecting the value of this efficiency rating.

To be noted is that the values of the slack variables in the constraints for (1) are stated in whatever metric is regarded as natural or convenient for identifying these variables as potential sources of inefficiencies. The non-Archimedean elements appear only in the functional. As already

noted, the θ^* value in the functional is mathematically independent of the units of measurement used. The slack variables in the functional may also be made independent of the unit of measurement by following the route used in Charnes, Cooper, Golany, Seiford and Stutz (1985) and dividing each s_i^- and s_r^+ in the functional by its corresponding x_{io} or y_{ro} . These adjustments in the functional do not alter the statement of the Non-Archimedean Efficiency Theorem as given in (3), above, and their use does not preclude continuing with whatever metrics are regarded as natural or convenient for the slack values in the constraints.

Nunamaker's discussion of DEA is also inadequate in that it omits any reference to the values of the dual variables which can be used to guide still further tradeoff adjustments. The possible use of optimal dual variable values for the purposes of effecting tradeoffs has been repeatedly noted, starting with the article by Charnes, Cooper and Rhodes (1978) (which Nunamaker cites) and has been carried into further development in subsequent articles such as Charnes, Cooper, Golany, Seiford and Stutz (1985). Thus while preserving the advantages of using the concept of Pareto-Koopmans efficiency in the manner noted in the preceding paragraphs, DEA is also able to delineate the efficient production frontier and to provide information to effect whatever tradeoffs may be desired by movement along these frontiers. Note, however, that movement along such efficiency frontiers requires making tradeoffs in which additional reductions in some resources or augmentations in some outputs may be obtained provided one is willing to increase other resources or diminish other outputs. Using such tradeoff possibilities may involve departures from the conditions of Pareto-Koopmans efficiency but DEA nevertheless provides such information to guide these tradeoffs, if wanted, and also to identify

efficiency frontiers which, in piecewise linear fashion, indicate where these tradeoffs are to be considered.

Extensions for evaluating returns to scale possibilities are available via the formulations in Banker, Charnes and Cooper (1984). Returns to scale possibilities -- which may differ from one output to another, as well as from one DMU to another -- may also be dealt with via the concept of Most Productive Scale Size introduced by Banker (1984). Using this concept in their DEA approach to data from North Carolina hospitals, Banker, Conrad and Straus (1986) identified both increasing and decreasing returns to scale as being present in individual hospitals along with technical inefficiencies which had all been "averaged out" in an earlier econometric study using a translog version of "flexible functional form" regressions.

Further extensions of DEA continue to be made in contemporary research but we doubt that any of them will be up to handling the "creative accounting, political lobbying, [bogus] alterations of input/output mixes," etc., which Nunamaker fears may be induced by DEA. Difficulties like these and incentives for their use are present, however, in every other known system of comparative evaluation -- including the theory of competitive markets, in which economic theory must assume an absence of force and fraud to obtain the desirable results from the exchanges that such markets are supposed to produce. The remedy for these difficulties lies in using a multiplicity of controls including the extensive use of

audits noted on p. 57 of Nunamaker. DEA can also add to the repertory of such controls and, in fact, it can be used to guide and control audit processes along lines like those described by Thomas (1986) in his evaluation of the uses of DEA and other analytic tools for the Public Utility Commission of Texas in guiding its legislatively mandated audits of managerial efficiency.

FOOTNOTES

- 1/ The multiplicative form given in Charnes, Cooper, Seiford and Stutz (1983) and the additive form given in Charnes, Cooper, Golany, Seiford and Stutz (1985) provide alternative models which also utilize the Data Envelopment Analysis principle.
- 2/ These $\epsilon > 0$ values may be thought of as reciprocals of the non-Archimedean "large" constants usually symbolized as M and associated with the use of artificial variables in linear programming so that one can alternately represent (2) in the form

$$\hat{h}_0 = M\theta - \sum_{i=1}^m s_i^- - \sum_{r=1}^s s_r^+ .$$

In any case, methods for treating such non-Archimedean constructs via ordinary simplex calculations are given on pp. 196 ff. in Chapter VI of Charnes and Cooper (1961).

REFERENCES

- Banker, R. D., 1984, Estimating Most Productive Scale Size Using Data Envelopment Analysis, European Journal of Operational Research 17, 35-44.
- Banker, R. D., Charnes, A. and Cooper, W. W., 1984, Models for the Estimation of Technical and Scale Inefficiencies in Data Envelopment Analysis, Management Science 20, 35-44.
- Banker, R. D., Conrad, R. F. and Straus, R. P., 1986. A Comparative Application of DEA and Translog Methods: An Illustrative Study of Hospital Production, Management Science 32, 30-44.
- Charnes, A. and Cooper, W. W., 1961. Management Models and Industrial Applications of Linear Programming, New York: John Wiley & Sons.
- Charnes, A., Cooper, W. W., 1980. "Management Science Relations for Evaluation and Management Accountability." Journal of Enterprise Management 2, 143-168.
- Charnes, A. and Cooper, W. W., 1985. Preface to Topics in Data Envelopment Analysis, in Annals of Operations Research, (R. G. Thompson and R. M. Thrall, eds.) Weltsteinplatz 10, CH-14058 Basel, Switzerland.
- Charnes, A. and Cooper, W. W., 1962. Programming with Linear Fractional Functionals, Naval Research Logistics Quarterly 9, 181-185.
- Charnes, A., Cooper, W. W., Golany, G., Seiford, L. and Stutz, J., 1985. Foundations of Data Envelopment Analysis for Pareto-Koopmans Efficient Empirical Production Functions, Journal of Econometrics 30, 91-107.
- Charnes, A., Cooper, W. W. and Rhodes, E., 1978. Measuring Efficiency of Decision Making Units, European Journal of Operational Research 2, (November) 429-444. See also Charnes, A., Cooper, W. W. and Rhodes, E., 1979. Short Communication, European Journal of Operational Research 3, 339.
- Charnes, A., Cooper, W. W., Seiford, L. and Stutz, J., 1983. "Invariant Multiplicative Efficiency and Piecewise Cobb-Douglas Envelopments," Operations Research Letters 2, (August) 101-103.
- Nunamaker, T. R., 1985. Using Data Envelopment Analysis to Measure the Efficiency of Non-Profit Organizations: A Critical Evaluation, Managerial and Decision Economics 6, (March), 50-58.
- Thomas, D., 1986. Auditing the Efficiency of Regulated Companies: An Application of Data Envelopment Analysis to Electric Cooperatives, (May). (Available from the IC² Institute, The University of Texas at Austin, 2815 San Gabriel Avenue, Austin, TX 78705-4018).

Unclassified

SECURITY CLASSIFICATION OF THIS PAGE (When Data Entered)

REPORT DOCUMENTATION PAGE		READ INSTRUCTIONS BEFORE COMPLETING FORM
1. REPORT NUMBER CCS 565	2. GOVT ACCESSION NO. AD-A180128	3. RECIPIENT'S CATALOG NUMBER
4. TITLE (and Subtitle) USING DATA ENVELOPMENT ANALYSIS TO MEASURE THE EFFICIENCY OF NOT-FOR-PROFIT ORGANIZATIONS: A CRITICAL EVALUATION COMMENT		5. TYPE OF REPORT & PERIOD COVERED Technical
7. AUTHOR(s) T. Ahn, A. Charnes, W.W. Cooper		6. PERFORMING ORG. REPORT NUMBER CCS 565
9. PERFORMING ORGANIZATION NAME AND ADDRESS Office of Naval Research (Code 434) Washington, DC		8. CONTRACT OR GRANT NUMBER(s) N00014-86-C-0398
11. CONTROLLING OFFICE NAME AND ADDRESS		10. PROGRAM ELEMENT, PROJECT, TASK AREA & WORK UNIT NUMBERS
14. MONITORING AGENCY NAME & ADDRESS (if different from Controlling Office)		12. REPORT DATE January 1987
		13. NUMBER OF PAGES 10
		15. SECURITY CLASS. (of this report) Unclassified
		15a. DECLASSIFICATION/DOWNGRADING SCHEDULE
16. DISTRIBUTION STATEMENT (of this Report) This document has been approved for public release and sale; its distribution is unlimited.		
17. DISTRIBUTION STATEMENT (of the abstract entered in Block 20, if different from Report)		
18. SUPPLEMENTARY NOTES		
19. KEY WORDS (Continue on reverse side if necessary and identify by block number) Data Envelopment Analysis, CCR Ratio Model, Pareto-Koopmans Efficiency		
20. ABSTRACT (Continue on reverse side if necessary and identify by block number) This note responds to Nunamaker (1985) who supposedly deals with deficiencies in Data Envelopment Analysis (DEA) as an approach for (i) measuring efficiencies of not-for-profit entities identified as Decision Making Units (DMUs) and (ii) locating sources and amounts of inefficiencies in each of the inputs used and in each of the outputs produced by each DMU. Corrections and comments are offered with references supplied for interested readers who wish to examine more detailed treatments of the topics covered.		

DD FORM 1473 JAN 73

EDITION OF 1 NOV 65 IS OBSOLETE
S/N 0102-014-6601

Unclassified

SECURITY CLASSIFICATION OF THIS PAGE (When Data Entered)

END

6-87

DTIC