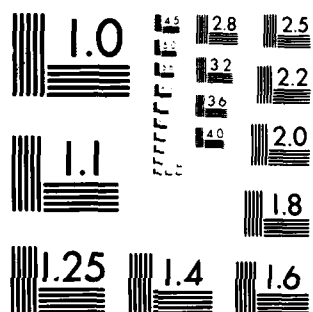


AD-A145 546 TIME VARIABILITY OF DIRECTIONALITY PROPERTIES OF PULSED 1/1  
EB-EDL (ELECTRON..(U) ARMY MISSILE COMMAND REDSTONE  
ARSENAL AL DIRECTED ENERGY DIRE.. R W JONES FEB 84  
UNCLASSIFIED DRSM1/RH-84-3-TR SBI-AD-E950 534 F/G 20/5 NL

END  
DATE  
FILMED  
10 84  
DTIC



MICROCOPY RESOLUTION TEST CHART  
NATIONAL BUREAU OF STANDARDS 1963 A

2

AD-A145 546



TECHNICAL REPORT RH-84-3

TIME VARIABILITY OF DIRECTIONALITY PROPERTIES OF PULSED  
EB-EDL  $N_2 - CO_2$  LASERS

R. W. Jones  
Directed Energy Directorate  
US Army Missile Laboratory

FEBRUARY 1984



**U.S. ARMY MISSILE COMMAND**  
*Redstone Arsenal, Alabama 35809*

*Approved for public release; distribution unlimited.*

DTIC FILE COPY

DTIC  
ELECTE  
SEP 10 1984  
D

#### **DISPOSITION INSTRUCTIONS**

**DESTROY THIS REPORT WHEN IT IS NO LONGER NEEDED. DO NOT RETURN IT TO THE ORIGINATOR.**

#### **DISCLAIMER**

**THE FINDINGS IN THIS REPORT ARE NOT TO BE CONSTRUED AS AN OFFICIAL DEPARTMENT OF THE ARMY POSITION UNLESS SO DESIGNATED BY OTHER AUTHORIZED DOCUMENTS.**

#### **TRADE NAMES**

**USE OF TRADE NAMES OR MANUFACTURERS IN THIS REPORT DOES NOT CONSTITUTE AN OFFICIAL INDORSEMENT OR APPROVAL OF THE USE OF SUCH COMMERCIAL HARDWARE OR SOFTWARE.**

UNCLASSIFIED

SECURITY CLASSIFICATION OF THIS PAGE (When Data Entered)

REPORT DOCUMENTATION PAGE		READ INSTRUCTIONS BEFORE COMPLETING FORM
1. REPORT NUMBER RH-84-3	2. GOVT ACCESSION NO. AD-A145546	3. RECIPIENT'S CATALOG NUMBER
4. TITLE (and Subtitle)  Time Variability of Directionality Properties of Pulsed EB-EDL N <sub>2</sub> - CO <sub>2</sub> Lasers		5. TYPE OF REPORT & PERIOD COVERED Technical Report
7. AUTHOR(s)  R. W. Jones		6. PERFORMING ORG. REPORT NUMBER
9. PERFORMING ORGANIZATION NAME AND ADDRESS Commander US Army Missile Command ATTN: DRSMI-RHS Redstone Arsenal, AL 35898		8. CONTRACT OR GRANT NUMBER(s)
11. CONTROLLING OFFICE NAME AND ADDRESS Commander US Army Missile Command ATTN: DRSMI-RPT Redstone Arsenal, AL 35898		10. PROGRAM ELEMENT, PROJECT, TASK AREA & WORK UNIT NUMBERS
14. MONITORING AGENCY NAME & ADDRESS (if different from Controlling Office)		12. REPORT DATE February 1984
		13. NUMBER OF PAGES
		15. SECURITY CLASS. (of this report)  Unclassified
		15a. DECLASSIFICATION/DOWNGRADING SCHEDULE
16. DISTRIBUTION STATEMENT (of this Report)		
17. DISTRIBUTION STATEMENT (of the abstract entered in Block 20, if different from Report)		
Approved for public release; distribution unlimited.		
18. SUPPLEMENTARY NOTES		
19. KEY WORDS (Continue on reverse side if necessary and identify by block number)		
Transverse Mode Formation                      Gain Switched Spike/Main Pulse Unstable Resonators                              Far-Field Distribution Pulsed Electric Discharge Lasers              High Energy Laser Far-Field Fluence Far-Field Fluence Distribution		
20. ABSTRACT (Continue on reverse side if necessary and identify by block number)		
Measurements were made of the time dependence of radiation intensity in various parts of the far-field patterns of pulsed e-beam electric discharge laser (EB-EDL) N <sub>2</sub> -CO <sub>2</sub> lasers. It was found that the relative intensity of the early-time gain-switch spike as compared to the later-time main pulse was different in different portions of the far-field pattern when the resonator alignment was of fully decentered type. (author)		

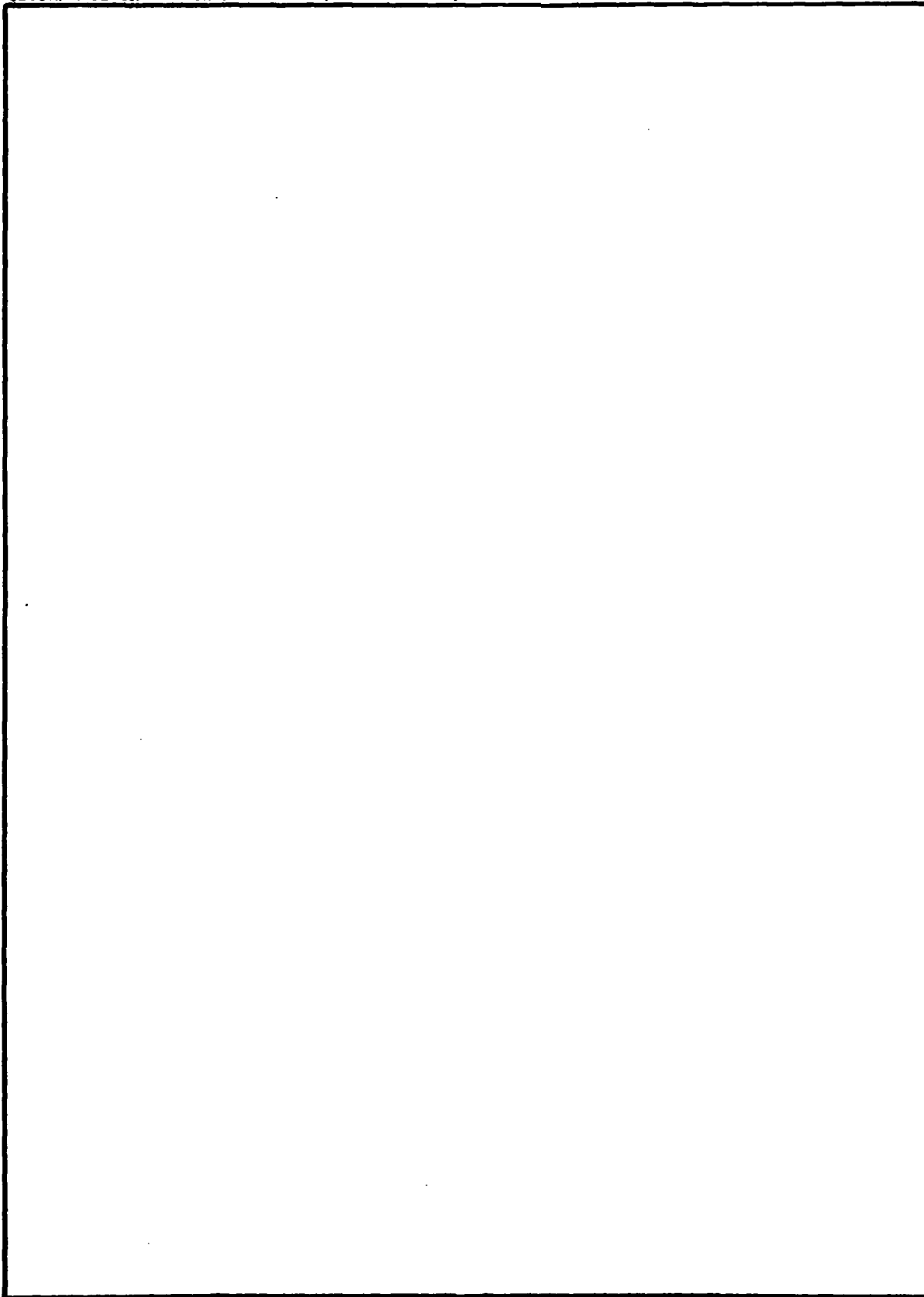
DD FORM 1 JAN 73 1473

EDITION OF 1 NOV 65 IS OBSOLETE

UNCLASSIFIED

SECURITY CLASSIFICATION OF THIS PAGE (When Data Entered)

**SECURITY CLASSIFICATION OF THIS PAGE(When Data Entered)**



**SECURITY CLASSIFICATION OF THIS PAGE(When Data Entered)**

## I. INTRODUCTION

An important practical feature of lasers is the high directionality of the output beam. For cw lasers, and also for many pulsed lasers, directionality is very good, being essentially limited only by diffraction. However, significant reductions in directionality can occur for some pulsed lasers.

One cause of reduced directionality is incomplete "transverse mode formation." This occurs when a substantial fraction of the total pulse power is emitted in a time shorter than that which is required for development of a well-formed transverse mode. This phenomena is presumably independent of the detailed properties of the pumping scheme, and has been observed with various gain media. Observation of this phenomenon in an electron beam initiated, electric-discharge (EB-EDL) sustained CO<sub>2</sub> laser operated without an admixture of N<sub>2</sub> was recently reported<sup>1</sup>. A report on the phenomenon observed in an EB-alone pumped excimer laser will soon be available<sup>2</sup>. Some of the work on transverse mode formation has been limited to observations of the spatial distribution (often a burn pattern in a suitable material) in the focal plane integrated over the total duration of the output. The present work includes both burn patterns and measurements of the time dependence of the radiation intensity at various points in the focal plane.

The observations reported herein indicate a reduction of directionality under conditions such that "transverse mode formation" does not seem to be the cause. The reported phenomena presumably do depend on the nature of the pumping scheme.

The present work employed two EB-EDL lasers which contain both N<sub>2</sub> and CO<sub>2</sub> in the gain medium and produce a double output pulse for each laser shot, namely a gain spike followed by the main pulse. The spike has significant effects in some applications in target coupling. These effects would be modified if the far-field spatial distribution of radiation in the gain spike is significantly different from that of radiation in the main pulse. Such different directionality properties of the gain spike and the main pulse have been observed and are being reported herein.

## II. EXPERIMENTS

Observations reported here include two distinct sets of experiments with different lasers of the same general type but with quite different magnifications. The arrangement for the first set of experiments is indicated in Figure 1. The EB-EDL laser<sup>3</sup> used a 1:2:3 gas mixture of N<sub>2</sub>:CO<sub>2</sub>:He at a pressure of one atmosphere. The nominal energy output was some 200 Joules within a pulse length of about 3.5  $\mu$  sec. The gain region was 100 cm in length, with a cathode to anode separation of 11 cm and a width of 10 cm.

The unstable resonator cavity was formed by a pair of mirrors placed so that at the confocal spacing of 2.892 meters, the magnification is 1.32. A mirror spacing of 3.374 meters was used in order to produce an output beam which focused on an experimental position located 136 meters downbeam. Observations were made with the resonator in each of two principal arrangements, namely centered alignment and fully decentered alignment; the latter is

illustrated in Figure 1. Important differences in results were obtained with the two types of alignment. The time-dependent directionality properties which were observed occurred only for the decentered alignment configurations; further discussions will be limited to such configurations.

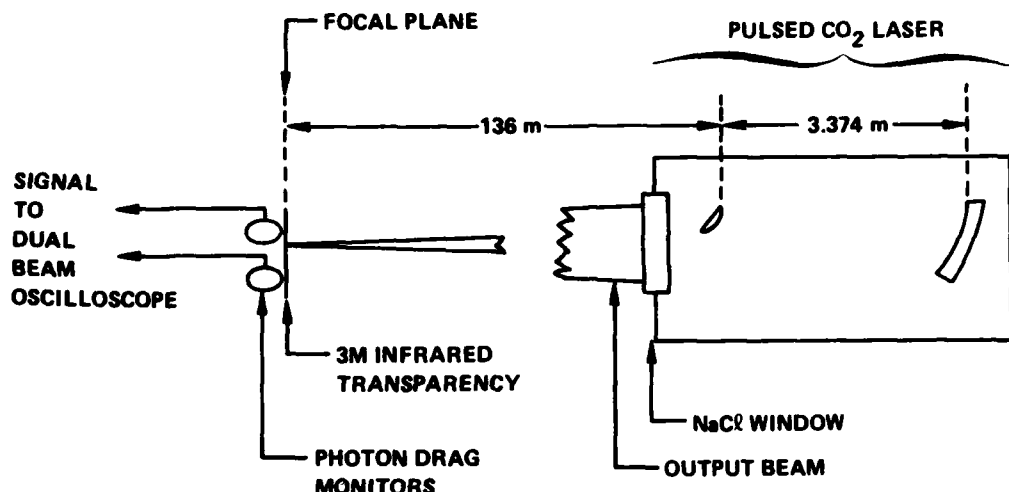


Figure 1. Experimental test configuration for observations of directionality properties of pulsed laser (using unstable resonator with decentered alignment.)

For some of the laser shots, the temporal behavior of the near field intensity was recorded using photon drag detectors; an example is shown in Figure 2. There is no appreciable difference between the two traces regarding the relative heights of the gain-switch spike and the later main pulse. This contrasts with observations made in the far-field as discussed below.

The principal far-field measurements which were made for each laser shot were: (a) a conventional burn pattern on a 3M (Minnesota Mining and Manufacturing) transparency showing the spatial distribution of the time-integrated far-field intensity and (b) the time history of the radiation intensity measured at two points in the focal plane. The latter measurements were obtained using photon drag detectors (rise time less than 1 nsec) located behind holes cut into a 3M transparency which was placed at the general position of the expected far-field pattern prior to pulsing the laser. The response of the two detectors was recorded on a dual beam oscilloscope. After the shot, the precise location of the two detectors relative to the time-integrated far-field pattern could be readily noted from inspection of the burn pattern on the 3M material.

Figure 3 shows the focal plane burn pattern obtained with a typical shot. It also shows the positions of the holes behind which were placed photon drag detectors. One of the holes falls at a secondary maximum in the pattern, while the other falls at a point of very low fluency. The time history of the radiation intensity at these positions is shown in Figure 4; the relative intensity of the main pulse as compared to the gain-switch spike is greatly different at the two detector positions. This general feature was rather common in the set of measurements which were made using this laser (with a decentered resonator). Figure 5 is a near-field burn pattern from the decentered resonator.



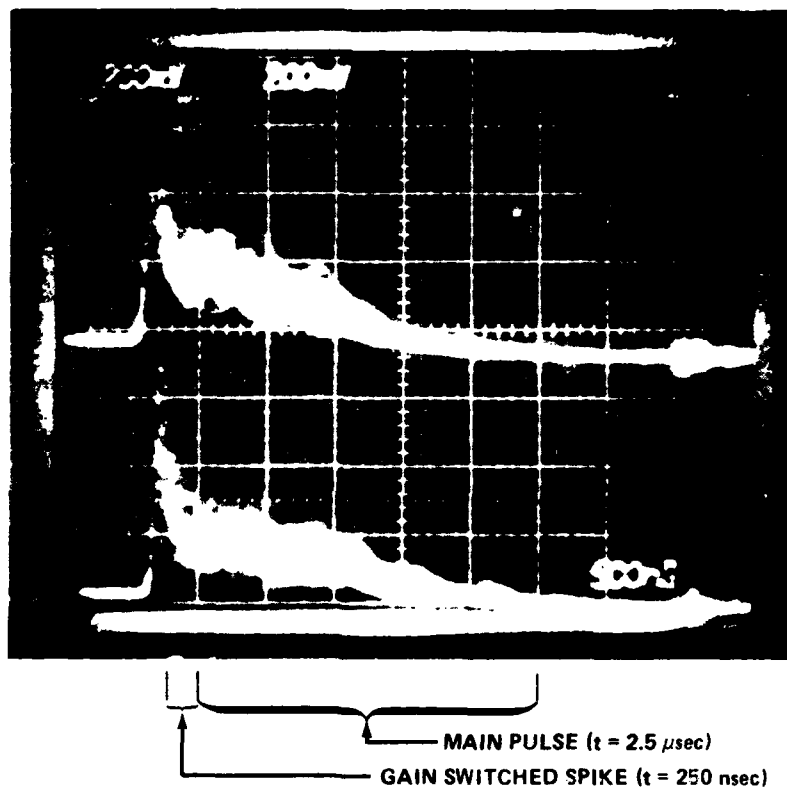


Figure 2. Temporal shape of the laser pulse in the near field (detectors were placed near the anode and cathode side of the beam). The slight horizontal offset is a misalignment with the oscilloscope.

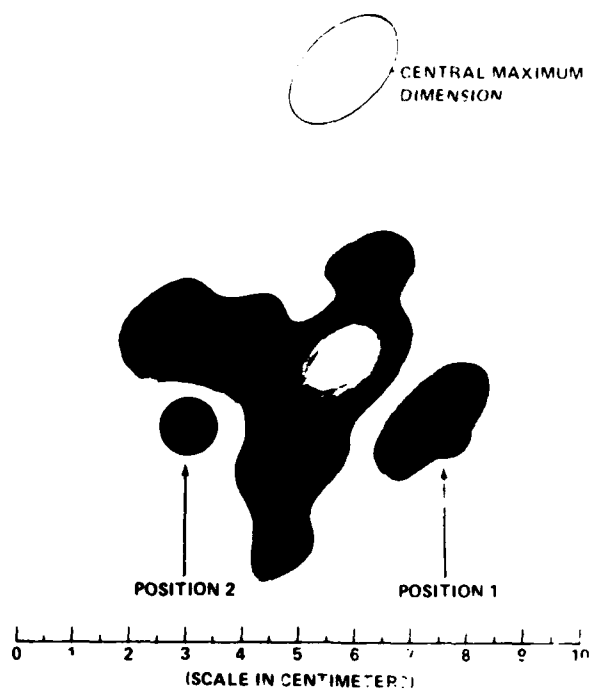


Figure 3. Far-field observations. Focal plane burn pattern (detectors were placed behind holes at positions 1 and 2).

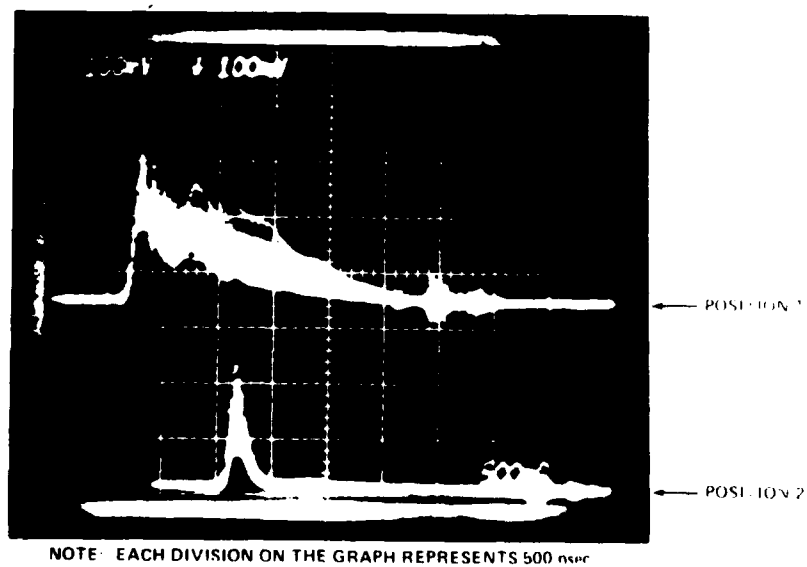


Figure 4. Far-field observations. Temporal shapes of the focal-plane intensities at positions 1 and 2 as recorded with photon drag detectors (the bottom trace has been deliberately displaced horizontally approximately 900 nsec or 1.8 divisions on the graph.)



Figure 5. Near-field burn pattern taken 50 cm from CO<sub>2</sub> laser. (Feed-back mirror support partially block the beam on top and bottom.)

Similar measurements were made with a second CO<sub>2</sub> laser<sup>4</sup>, which is similar in general characteristics to the laser described above but is larger and has a more intense output. It was operated with a nominal resonator magnification of about 2.23. The above noted directionality properties were also observed in experiments carried out with the second laser with decentered alignment. An example of these properties is shown in Figures 6, 7, and 8, which shows temporal traces of the near-field and 3 far-field positions at 225 meters, respectively.

The observed differential directionality of radiation emitted during the gain-switch spike and the main pulse portions of the output is consistent with various possible interpretations. One of these is a "mode-formation" interpretation in the sense described above. This possibility was investigated in a separate series of experiments, results of which argue against that interpretation. Another possible interpretation is slewing of the output beam through an angle of the order of half a diffraction angle during the period of the overall output pulse. This might occur due to laser-medium gradients arising from behavior of the electron beam which pre-ionizes the gas<sup>5</sup>. A further series of investigations is being undertaken in an effort to clarify the cause of the observed phenomena.

### III. CONCLUSIONS

It has been found that significantly different directionality properties are associated with the radiation emitted during the time of the gain-switch spike and of the later main pulse for a rather common type of electrically pulsed N<sub>2</sub>-CO<sub>2</sub> laser when operated with an unstable resonator with fully decentered alignment. This undesired time variability of directionality can be avoided by restricting the resonator alignment to be of centered type. Imposition of that restriction, however, eliminates advantages of the more compact far-field distributions which can be achieved with decentered alignment<sup>6</sup>.

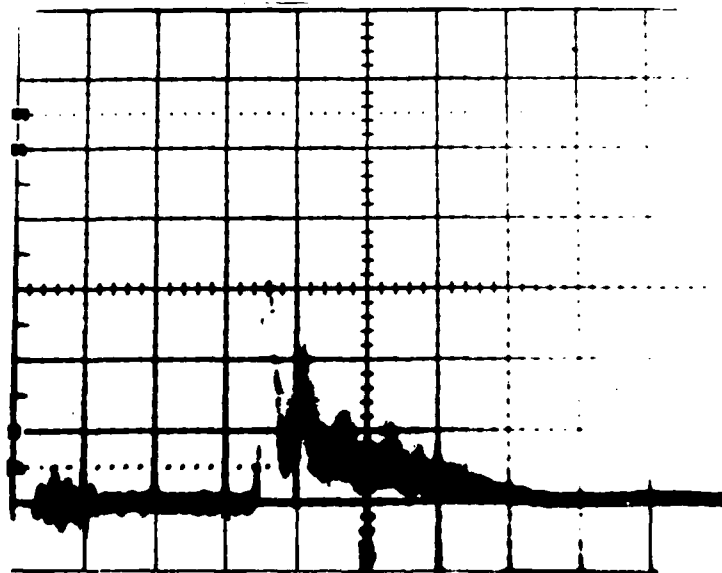


Figure 6. Simultaneous temporal traces of a pulsed CO<sub>2</sub> laser. Near-field intensity.

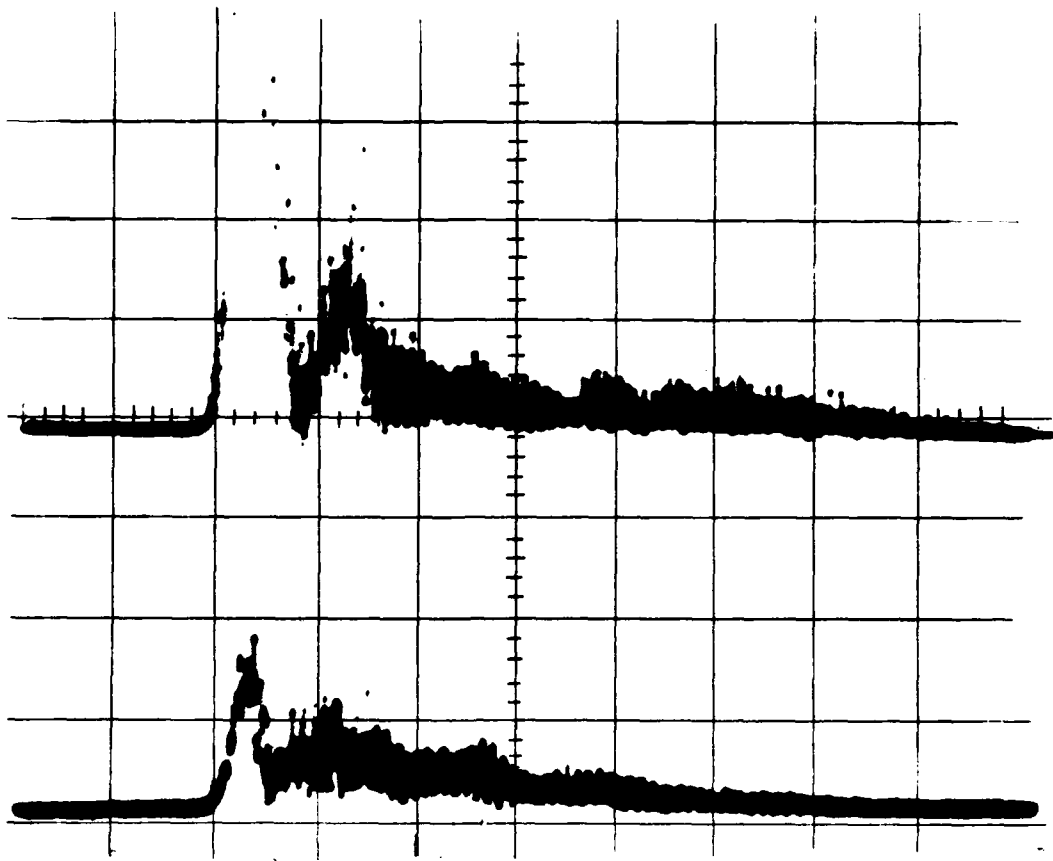


Figure 7. Simultaneous temporal traces of a pulsed CO<sub>2</sub> laser. Far-field intensity at 225 meters.

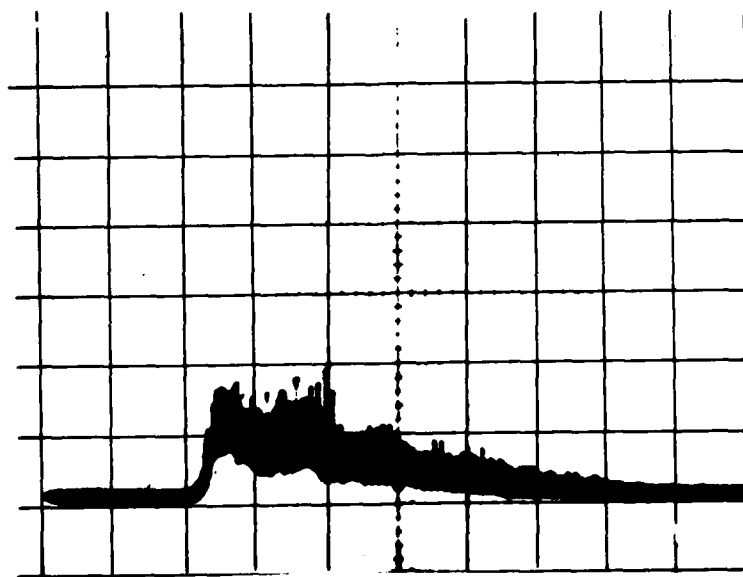


Figure 8. Simultaneous temporal traces of a pulsed CO<sub>2</sub> laser. Far-field intensity at 225 meters.

#### REFERENCES

1. R. W. Jones, Physics Letters, 93A, 472 (1983).
2. R. W. Jones and J. F. Perkins, Appl. Opt. 23, 1 May 1984.
3. C. Cason, A. H. Werkheiser, W. Otto, and R. W. Jones, J. Appl. Phys. 48, 2531 (1977).
4. G. Dezenberg, et al., AIAA 16th Thermophysics Conference, June 23, 1981.
5. Charles Cason, J. F. Perkins, A. H. Werkheiser, and J. Duderstadt, AIAA 15, 1070-1083 (1977).
6. G. W. Sutton, M. M. Weiner, and S. A. Mani, Appl. Opt. 15, 2228 (1976).

# DISTRIBUTION LIST

	<u>Number of Copies</u>
Lockheed Missile and Space Company ATTN: Mr. Roy Stewart P.O. Box 504 Sunnyvale, CA 94086	1
Lockheed Missile and Space Company ATTN: Mr. Owne Hofer P.O. Box 1103, West Station Huntsville, AL 35807	1
McDonnell Douglas Astronautics Company ATTN: Dr. W. Boxich 5301 Bolsa Avenue Huntington Beach, CA 92647	1
General Electric Company ATTN: Mr. Bill East 3198 Chestnut Street Philadelphia, PA 19101	1
Bell Aerospace Textron ATTN: Dr. Wayne Solomon P.O. Box 1 Buffalo, NY 14240	1
Science Applications, Inc. ATTN: Mr. Harvey Ford 6600 Powers Ferry Road Suite 220 Atlanta, GA 30339	1
Science Applications, Inc. ATTN: Mr. Larry Pechham Three San Pedro Park, Suite 212/206 2201 San Pedro Drive, NE Albuquerque, NM 87110	1
Navy High Energy Laser Project Office ATTN: Mr. John P. Albertine LCDR Nanos Naval Sea Systems Command (PM22/PMS405) Washington, DC 20351	2
Westinghouse Electric Corporation ATTN: Mr. Charles Thompson 80 Holiday Office Center Huntsville, AL 35801	1

Braddock, Dunn & McDonald, Inc. ATTN: Mr. Roger Hoppe P.O. Box 9274 Albuquerque, NM 87119	1
Boeing Aerospace Company ATTN: Dr. Davis Nichols P.O. Box 399 Seattle, WA 98124	1
AVCO-Everett Research Laboratory ATTN: Dr. George Sutton Dr. M. J. Smith 2385 Revere Beach Parkway Everett, MA 02149	1 1
Cincinnati Electronics ATTN: Mr. E. E. Cook 2630 Glendale-Milford Road Cincinnati, OH 45241	1
Naval Research Laboratory ATTN: Dr. Stuart Searles CODE 6540 Washington, DC 20375	1
Sperry Systems Management ATTN: Mr. Jon Nickrehm 1112 Church Street Huntsville, AL 35801	1
Director US Army Ballistic Research Laboratory ATTN: Mr. John McNeilly Aberdeen Proving Ground, MD 21005	1
Director Defense Advance Research Projects Agency/STO ATTN: COL Rettig Benedict 1400 Wilson Blvd Arlington, VA 22209	1
Aerospace Corporation ATTN: Mr. W. Warren P.O. Box 95085 El Segundo, CA 90045	1
United Technologies Research Center Optics and Applied Technology ATTN: Dr. Frank Ebricht P.O. Box 2691 West Palm Beach, FL 33402	1



Commander	
Air Force Weapons Laboratory	
ATTN: AFWL/ARAO, COL James Mayo	1
AFWL/ARAO, Dr. Diane Martin	1
Kirtland AFB, NM 87117	
Maxwell Laboratories	
ATTN: Dr. John F. Asmus	1
Mr. Jerry R. Oldenettel	1
8835 Balboa Avenue	
San Diego, CA 92123	
Pratt & Whitney Aircraft	
ATTN: Mr. D. Witt	1
P.O. Box 2691	
West Palm Beach, FL 33402	
Rockwell International	1
ATTN: Mr. John Wrubel	
6633 Canoga Ave	
Canoga Park, CA 91304	
Hughes Aircraft	1
Centinela and Teale Streets	
ATTN: Mr. Bernard Skehan	
Culver City, CA 90230	
Charles Stark Draper Laboratory	1
ATTN: Mr. Juri Valge	
555 Technology Square	
Cambridge, MA 02139	
W. J. Schafer Associates, Inc.	1
ATTN: Dr. Jack Albers	
2005 C Gallatin St., SW	
Huntsville, AL 35801	
Perkin-Elmer Corporation	1
ATTN: Mr. Norbert Schnog	
Main Avenue, Mail Station 231	
Norwalk, CT 06856	
General Dynamics	1
Pomona Division	
ATTN: Mr. F. Bannie Kuffer	
P.O. Box 2507	
Pomona, CA 91766	

General Research Corporation	1
ATTN: Dr. Karl Wormbrod	
307 Wynn Dr.	
Huntsville, AL 35807	
 TRW, Inc.	 1
Defense and Space Systems Group	
One Space Park	
Redondo Beach, CA 90278	
 US Army Materiel System Analysis Activity	 1
ATTN: DRXSY-MP	
Aberdeen Proving Ground, MD 21005	
 BMD Systems Command	 15
ATTN: BMDSC-HO (Dr. Jones)	
P.O. Box 1500	
Huntsville, AL 35807	
 DRSMI-R (Dr. McCorkle)	 1
-R (Dr. Rhoades)	1
-LP (Mr. Voigt)	1
-RPR	5
-RH (Mr. Jennings)	1
-RHA	1
-RHB	1
-RHC	1
-RHE (Mr. Mitchell)	1
-RHS (Dr. Honeycutt)	1
-RHS (Mr. Smith)	1
-Q (Mr. Hutcheson)	1
-RL (Mr. Parham)	1

END

DATE  
FILMED

0-84

DTIC