

AD-A122 253

A METHOD OF EVALUATING LAPLACE TRANSFORMS WITH SERIES
OF COMPLETE OR INCO..(U) ARMY ARMAMENT RESEARCH AND
DEVELOPMENT COMMAND ABERDEEN PROVI.. A S ELDER ET AL.

1/1

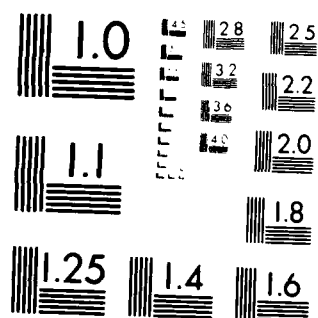
UNCLASSIFIED

DEC 82 ARBRL-TR-02450 SBI-AD-F300 141

F/G 12/1

NL

END
DATE
FILMED
F. R. S.
DTIC



MICROCOPY RESOLUTION TEST CHART
NATIONAL BUREAU OF STANDARDS-1963-A

AD A122253

12

AD

TECHNICAL REPORT ARBRL-TR-02450

A METHOD OF EVALUATING LAPLACE
TRANSFORMS WITH SERIES OF COMPLETE
OR INCOMPLETE BETA FUNCTIONS

Alexander S. Elder
Emma M. Wineholt

December 1982



US ARMY ARMAMENT RESEARCH AND DEVELOPMENT COMMAND
BALLISTIC RESEARCH LABORATORY
ABERDEEN PROVING GROUND, MARYLAND

Approved for public release; distribution unlimited.

Destroy this report when it is no longer needed.
Do not return it to the originator.

Secondary distribution of this report is prohibited.

Additional copies of this report may be obtained
from the National Technical Information Service,
U. S. Department of Commerce, Springfield, Virginia
22161.

The findings in this report are not to be construed as
an official Department of the Army position, unless
so designated by other authorized documents.

*The use of trade names or manufacturers' names in this report
does not constitute indorsement of any commercial product.*

UNCLASSIFIED

SECURITY CLASSIFICATION OF THIS PAGE (When Data Entered)

REPORT DOCUMENTATION PAGE		READ INSTRUCTIONS BEFORE COMPLETING FORM
1. REPORT NUMBER Technical Report ARBRL-TR-02450	2. GOVT ACCESSION NO. AD-A122 353	3. RECIPIENT'S CATALOG NUMBER
4. TITLE (and Subtitle) A METHOD OF EVALUATING LAPLACE TRANSFORMS WITH SERIES OF COMPLETE OR INCOMPLETE BETA FUNCTIONS		5. TYPE OF REPORT & PERIOD COVERED
7. AUTHOR(s) A.S. Elder, E.M. Wineholt		6. PERFORMING ORG. REPORT NUMBER
9. PERFORMING ORGANIZATION NAME AND ADDRESS U.S. Army Ballistic Research Laboratory ATTN: DRDAR-BLI Aberdeen Proving Ground, MD 21005		8. CONTRACT OR GRANT NUMBER(s)
11. CONTROLLING OFFICE NAME AND ADDRESS US Army Armament Research & Development Command US Army Ballistic Research Laboratory (DRDAR-BL) Aberdeen Proving Ground, MD 21005		10. PROGRAM ELEMENT, PROJECT, TASK AREA & WORK UNIT NUMBERS 11161102AM45
14. MONITORING AGENCY NAME & ADDRESS (if different from Controlling Office)		12. REPORT DATE December 1982
		13. NUMBER OF PAGES 35
		15. SECURITY CL. ASS. (of this report) UNCLASSIFIED 15a. DECLASSIFICATION DOWNGRADING SCHEDULE
16. DISTRIBUTION STATEMENT (of this Report) Approved for public release; distribution unlimited		
17. DISTRIBUTION STATEMENT (of the abstract entered in Block 20, if different from Report)		
18. SUPPLEMENTARY NOTES		
19. KEY WORDS (Continue on reverse side if necessary and identify by block number) Incomplete beta functions Laplace integrals Beta functions Factorial series Bessel functions Stirling numbers		
20. ABSTRACT (Continue on reverse side if necessary and identify by block number) JMK In a previous paper factorial series were used to calculate ordinary and modified Bessel functions of the second kind. In the present paper the factorial series is generalized so that Laplace integrals in which the integrand has a branch point at the origin are represented by a series of beta functions. To effect the required transformation, formulas for calculating Stirling numbers of fractional order were derived; these were used in the same manner as the Stirling numbers of integer order are used to calcu-		

Unclassified

SECURITY CLASSIFICATION OF THIS PAGE(When Data Entered)

20. Abstract (Cont'):

late the coefficients of a factorial series. Formulas for calculating $K_0(x)$ and $K_1(x)$ have been derived and programmed, using these modified Stirling numbers. Formulas for calculating $I_0(x)$ and $I_1(x)$ have been derived and programmed using series of incomplete beta functions in a similar algorithm. Results agree to thirteen significant figures for $K_0(x)$ and $K_1(x)$ when $x > 8$ and for $I_0(x)$ and $I_1(x)$ when $x > 15$. The modified Stirling numbers increase very slowly with order and index since gamma functions do not occur in the definition. Consequently no problems with overrun of the electronic computer occurred during the course of the calculations.

UNCLASSIFIED

SECURITY CLASSIFICATION OF THIS PAGE(When Data Entered)

TABLE OF CONTENTS

	Page
LIST OF TABLES.....	5
I. INTRODUCTION.....	7
II. MODIFIED STIRLING NUMBERS OF THE FIRST KIND AND FRACTIONAL ORDER.....	8
III. GENERALIZED FACTORIAL SERIES.....	13
IV. A SERIES OF INCOMPLETE BETA FUNCTIONS.....	16
V. CALCULATIONS.....	19
VI. RESULTS AND CONCLUSIONS.....	26
ACKNOWLEDGMENTS.....	27
REFERENCES.....	29
DISTRIBUTION LIST.....	31



A

LIST OF TABLES

Table		Page
1.	MODIFIED STIRLING NUMBERS, $v_k^{(v)}$	21
2.	BINOMIAL COEFFICIENTS FOR SERIES EXPANSION.	22
3.	PARTIAL SUMS, c_m	23
4.	INCOMPLETE AND COMPLETE BETA FUNCTIONS.	24
5.	MODIFIED BESSEL FUNCTIONS	25

I. INTRODUCTION

Factorial series for Bessel functions, confluent hypergeometric functions, and certain other special functions can be used to check the accuracy of calculations for these functions provided the argument is not too small. Generally, if a function is analytic in the right half plane, including the imaginary axis, and can be represented as a Laplace transform, then a factorial series can be derived which will converge in the right half plane. Buchal and Duffy¹ obtained factorial series for Hankel functions, Coulomb wave functions, and Mathieu functions. These authors also studied the convergence properties of the factorial series for the Hankel functions in considerable detail. Their results showed that factorial series were more accurate than Hankel asymptotic series for the same argument. The analysis was based on Bernoulli polynomials as discussed by Doetsch² and Milne-Thomson³.

The analysis in this paper is based on an algorithm of Wasow⁴ which uses Stirling numbers of the first kind to calculate coefficients for the factorial series. The Stirling numbers of the first kind increase very rapidly with order, eventually obtaining overrun in the electronic computer. Moreover, the factorial series for complex argument is awkward if there is a branch point at the origin. Rosser⁵ obtained a generalized factorial series for modified

¹R.N. Buchal and G. Duffy, "Factorial Series Representations as Check Solutions in the Development of Special Function Subroutines," Argonne National Laboratory Technical Memorandum No. 200, May 1970.

²G. Doetsch, Hanbuch Der Laplace-Transformation, Band II, Birkhauser Verlag, Basel and Stuttgart, 1955, pages 201-232.

³L.M. Milne - Thomson, The Calculus of Finite Differences, Macmillan and Co., Limited, London, 1933.

⁴W. Wasow, Asymptotic Expansions for Ordinary Differential Equations, Interscience Publishers, a Division of John Wiley & Sons, Inc., New York, pages 323-331.

⁵J. B. Rosser, "Factorial Expansions for Certain Bessel Functions," Mathematics Research Center Summary Report No. 1572, November 1975.

Bessel functions of the second kind by direct manipulation of the Laplace transform and also established the convergence properties. His analysis is quite difficult and requires a separate treatment for each case. In this paper we derive Stirling numbers of the first kind and fractional order, leading to a generalization of Wasow's algorithm. Overrun in the computer is eliminated by scaling the Stirling numbers of integral and fractional order by omitting the gamma functions in the definition.

A further generalization of factorial series is required if the Laplace integral representing the function is evaluated between finite limits. If a factorial series is regarded as a series of beta functions, it is logical to represent a Laplace integral with finite limits in terms of a series of incomplete beta functions. The new series obtained by this method is convergent even though the corresponding factorial series may be divergent.

II. MODIFIED STIRLING NUMBERS OF THE FIRST KIND AND FRACTIONAL ORDER

Stirling numbers of the first kind are defined as coefficients which occur when a factorial is expanded into a polynomial^{6,7}, given by

$$x(x-1)(x-2) \dots (x-n+1) = \sum_{m=0}^n S_n^{(m)} x^m. \quad (1)$$

Clearly m must be an integer in the above equation. However, a generating function involving logarithms is not subject to this restriction, such as

$$[\ln(1+x)]^m = m! \sum_{n=m}^{\infty} S_n^{(m)} \frac{x^n}{n!}, \text{ for } |x| < 1 \quad (2)$$

⁶M. Abramowitz and L.A. Stegun, Handbook of Mathematical Functions, Graphs, and Mathematical Tables. National Bureau of Standards, Washington, D.C., No. 55, Applied Mathematics Series, June 1964. See Formulas 24.1.3, page 824, for discussion of Stirling numbers. Continued fractions for the incomplete beta functions are given in Formulas 26.5.8, page 944.

⁷C. Jordan, Calculus of Finite Differences, Rottig and Romwalter, Saproon, Hungary, 1939. Stirling numbers are discussed in Chapter 4, pages 142-229.

or, alternatively,

$$[\ln(1+x)]^m = \Gamma(m+1) \sum_{n=m}^{\infty} S_n^{(m)} \frac{x^n}{\Gamma(n+1)}.$$

In order to avoid the gamma function and to include non-integral indices we define $W_n^{(v)}$ by the equation

$$[\ln(1+x)]^v = \sum_{k=0}^{\infty} W_k^{(v)} x^{v+k}, \quad (3)$$

where v may take on fractional as well as integral values. When the $W_k^{(v)}$ have been calculated, Stirling numbers of the first kind may be obtained from the following equations.

$$S_n^{(m)} = \Gamma(n+1) W_{n-m}^{(m)} / \Gamma(m+1), \quad (4)$$

where

$$v = m \quad (5)$$

$$k = n - m. \quad (6)$$

To find $W_0^{(v)}$, divide Eq. (3) by x^v and evaluate the limit of each side of resulting equations as $x \rightarrow 0$. We obtain

$$W_0^{(v)} = 1. \quad (7)$$

We can also prove that

$$W_k^{(0)} = 0, \text{ for } k > 1 \quad (8)$$

and

$$W_0^{(0)} = 1. \quad (9)$$

We now derive a sequence of triangular equations for calculating $W_1^{(u)}, W_2^{(u)}, \dots, W_l^{(u)}$ in turn. Let

$$y(x) = [\ln(1+x)]^u \quad (10)$$

and

$$u(x) = (x+1) \ln(1+x). \quad (11)$$

Then

$$u(x) y'(x) = uy(x). \quad (12)$$

But

$$y(x) = \sum_{k=0}^{\infty} W_k^{(u)} x^{u+k}, \quad (13)$$

$$y'(x) = \sum_{k=0}^{\infty} W_k^{(u)} (u+k) x^{u+k-1} \text{ and} \quad (14)$$

$$u(x) = x + \frac{1}{2}x^2 - \frac{1}{6}x^3 + \frac{1}{12}x^4 - \dots + (-1)^k \frac{x^k}{k(k-1)}, \text{ for } k > 1. \quad (15)$$

On inserting these series into Eq. (12), carrying out the indicated multiplication and equating coefficients of like powers of x on each side of the resulting equation, we find

$$w_0^{(v)} = w_0^{(v)},$$

$$\frac{v+1}{1} w_1^{(v)} + \frac{1}{2} v = v w_1^{(v)} \text{ and}$$

$$\frac{v+2}{1} w_2^{(v)} + \frac{v+1}{2} w_1^{(v)} - \frac{v}{6} = v w_2^{(v)}.$$

On rearranging these equations we find

$$w_1^{(v)} + \frac{1}{2} v = 0, \quad (16)$$

$$2 w_2^{(v)} + \frac{v+1}{2} w_1^{(v)} - \frac{v}{6} = 0, \quad (17)$$

$$3 w_3^{(v)} + \frac{v+2}{2} w_2^{(v)} - \frac{v+1}{6} w_1^{(v)} + \frac{v}{12} = 0, \quad (18)$$

and, in general,

$$l w_l^{(v)} + \sum_{k=0}^{l-1} (-1)^{l+k+1} \frac{v+k}{(l-k)(l-k+1)} w_k^{(v)} = 0. \quad (19)$$

To find a recurrence formula involving different orders, differentiate Eq. (3) with respect to x and then multiply both sides of the resulting equation by $(x+1)$, giving

$$u [\ln(1+x)]^{u-1} = \sum_{k=0}^{\infty} w_k^{(u)} (u+k)(x+1) x^{u+k-1}. \quad (20)$$

If we replace u by $(u-1)$ in Eq. (3) and multiply both sides of the resulting equation by u , we find

$$u [\ln(1+x)]^{u-1} = \sum_{k=0}^{\infty} w_k^{(u-1)} u x^{u+k-1}. \quad (21)$$

On comparing coefficients of like powers of x in the last two equations we find

$$w_{k+1}^{(u)} = [u w_{k+1}^{(u-1)} - (u+k) w_k^{(u)}] / [u+k+1]. \quad (22)$$

Hence we can calculate $w_{k+1}^{(u+1)}$ from $w_{k+1}^{(u)}$ and $w_k^{(u+1)}$. Higher order numbers can be generated in succession in the same manner. The values of $w_0^{(u)}, w_1^{(u)}, \dots, w_\ell^{(u)}$ must be calculated from Eq. (19) before the recurrence formula given by Eq. (22) can be used; a double entry table is finally obtained.

Wasow uses Schlomlich's definition of factorial coefficients in his development of factorial series ⁴

$$x(x+1)(x+2) \dots (x+n-1) = \sum_{m=0}^{n-1} \Gamma_m^n x^{n-m}. \quad (23)$$

It follows that the factorial coefficients and Stirling numbers of the first kind are related by the formula

$$\Gamma_{n-m}^{(n)} = (-1)^{n-m} S_n^{(m)}. \quad (24)$$

We define

$$v_{n-m}^{(m)} = (-1)^{m-n} \Gamma(m+1) S_n^{(m)} / \Gamma(n+1) \quad (25)$$

and for fractional orders

$$[-\ln(1-x)]^u = \sum_{k=0}^{\infty} v_k^{(u)} x^{u+k}. \quad (26)$$

Finally, we obtain the following recurrence formulas in the manner indicated previously

$$\ell v_{\ell}^{(u)} - \sum_{k=0}^{\ell-1} \frac{u+k}{(\ell-k)(\ell-k+1)} v_k^{(u)} = 0 \text{ and} \quad (27)$$

$$v_{k+1}^{(u)} = [u v_{k+1}^{(u-1)} + (u+k) v_k^{(u)}] / [u+k+1]. \quad (28)$$

III. GENERALIZED FACTORIAL SERIES

We now derive an extension of Wasow's algorithm for a Laplace integral to functions with a branch point at the origin. The branch point involves fractional powers, in the same context as Watson's Lemma⁸; logarithmic branch points are not considered. Assume

⁸E.T. Copson, An Introduction to the Theory of Functions of a Complex Variable, Oxford, 1935, pages 218-219.

$$F(x) = \int_0^{\infty} f(t) e^{-xt} dt \quad (29)$$

and let

$$t = -\ln(1-u) ; \quad (30)$$

then

$$F(x) = \int_0^1 f[-\ln(1-u)] [1-u]^{x-1} du . \quad (31)$$

If

$$f(t) = \sum_{n=0}^{\infty} a_n t^{u+n}, \text{ for } u > -1 \text{ and } 0 < t < 1 , \quad (32)$$

then

$$F(x) = \sum_{n=0}^{\infty} a_n \int_0^1 [-\ln(1-u)]^{u+n} [1-u]^{x-1} du. \quad (33)$$

On referring to Eq. (26) we see

$$F(x) = \sum_{n=0}^{\infty} \sum_{k=0}^{\infty} a_n v_k^{(u+n)} \int_0^1 u^{u+k+n} (1-u)^{x-1} du. \quad (34)$$

Now

$$B(\alpha, \beta) = \int_0^1 t^{\alpha-1} (1-t)^{\beta-1} dt \quad (35)$$

so that

$$F(x) = \sum_{n=0}^{\infty} \sum_{k=0}^{\infty} a_n v_k^{(u+n)} B(k+n+u+1, x) . \quad (36)$$

We enter the terms in a double entry table; then by summing the diagonals, we obtain the Cauchy sum of the double series⁹. Let

$$k+n=l \quad (37)$$

and define

$$b_l = \sum_{n=0}^l a_n v_{l-n}^{(u+n)} ; \quad (38)$$

then

$$F(x) = \sum_{l=0}^{\infty} b_l B(u+l+1, x) . \quad (39)$$

On noting that

$$B(u+l+1, x) = B(u, x) \frac{u(u+1) \dots (u+l)}{(x+u)(x+u+1) \dots (x+u+l)} \quad (40)$$

⁹K. Knapp, *Infinite Sequences and Series*, Dover Publications, New York, 1956, pages 82-85.

and using Pochhammer's symbol to represent the factorials, we find

$$F(x) = B(u, x) \sum_{l=0}^{\infty} b_l(u)_{l+1} / (x+u)_{l+1} \quad (41)$$

in a formal sense. By analogy with conventional factorial series, the series should converge in a half plane which lies to the right of the imaginary axis. Details of the required analysis will not be considered at this time.

IV. A SERIES OF INCOMPLETE BETA FUNCTIONS

Since a generalized factorial series is in fact a series of beta functions, it is natural to represent a Laplace integral with finite limits of integration as a series of incomplete beta functions. The lower limit of integration can be taken equal to zero without loss of generality. Assume

$$F(x) = \int_0^{\tau} e^{-tx} f(t) dt, \quad t > 0. \quad (42)$$

Let

$$\epsilon = 1 - e^{-\tau} ; \quad (43)$$

then

$$F(x) = \int_0^{\epsilon} f[-\ln(1-u)] [1-u]^{x-1} du. \quad (44)$$

On referring to Eq. (26) we find

$$F(x) = \sum_{n=0}^{\infty} \sum_{k=0}^{\infty} a_n v_k^{(\nu+n)} \int_0^{\epsilon} u^{\nu+k+n} (1-u)^{x-1} du . \quad (45)$$

Since

$$B_{\epsilon}(\alpha, \beta) = \int_0^{\epsilon} t^{\alpha-1} (1-t)^{\beta-1} dt , \quad (46)$$

we find

$$F(x) = \sum_{n=0}^{\infty} \sum_{k=0}^{\infty} a_n v_k^{(\nu+n)} B_{\epsilon}(\nu+k+n+1, x) \quad (47)$$

or

$$r(x) = \sum_{\ell=0}^{\infty} b_{\ell} B_{\epsilon}(\nu+\ell+1, x) \quad (48)$$

on referring to Eqs. (37) and (38).

To compute the incomplete beta function, set

$$\nu+\ell = \delta \quad (49)$$

and use the formula

$$B_{\epsilon}(\delta+1, x) = B(x, \delta+1) - B_{1-\epsilon}(x, \delta+1) . \quad (50)$$

The beta function on the right side of Eq. (50) was expressed in terms of gamma functions, as shown in Eq. (51),

$$B(x, \delta+1) = \Gamma(x) \Gamma(\delta+1) / \Gamma(x+\delta+1). \quad (51)$$

The gamma functions were obtained from the subroutine CDLGAM by H. Kuki¹⁰. This subroutine is valid for both real and complex values of x .

The incomplete beta function on the right side of Eq. (50) is given by the integral formula

$$B_{1-\epsilon}(x, \delta+1) = \int_0^{1-\epsilon} t^{x-1} (1-t)^\delta dt. \quad (52)$$

On expanding the binomial factor in the integrand and integrating term by term we find

$$\begin{aligned} B_{1-\epsilon}(x, \delta+1) &= \frac{(1-\epsilon)^x}{x} - \frac{\delta}{1!} \frac{(1-\epsilon)^{x+1}}{(x+1)} \\ &+ \frac{\delta(\delta-1)}{2!} \frac{(1-\epsilon)^{x+2}}{(x+2)} - \frac{\delta(\delta-1)(\delta-2)}{3!} \frac{(1-\epsilon)^{x+3}}{(x+3)} + \dots \end{aligned} \quad (53)$$

This series is satisfactory if δ is small, but is subject to round-off error if δ is large and positive. To overcome this difficulty, integrate the right-hand side of Eq. (52) repeatedly by parts. We find

$$\begin{aligned} B_{1-\epsilon}(x, \delta+1) &= \frac{(1-\epsilon)^x}{x} \epsilon^\delta + \frac{\delta(1-\epsilon)^{x+1}}{x(x+1)} \epsilon^{\delta-1} \\ &+ \frac{\delta(\delta-1)(1-\epsilon)^{x+2}}{x(x+1)(x+2)} \epsilon^{\delta-2} + \dots + \frac{\delta(\delta-1)(\delta-2)\dots(\delta-m)}{x(x+1)(x+2)\dots(x+m)} R_m, \end{aligned} \quad (54)$$

where

¹⁰H. Kuki, *Communications of the ACM*, Vol 15, No 4, April 1972. The subroutine CDLGAM was extracted from Algorithm 421.

$$R_m = B_{1-\epsilon}(x+m+1, \delta-m). \quad (55)$$

We choose m so that

$$1 < \delta-m < 2. \quad (56)$$

Then the terms of the series given by Eq. (54) are positive when x is real and positive, and consequently the round-off error should be small.

The remainder R_m is calculated from Eq. (53),

$$R_m = \frac{(1-\epsilon)^{x+m+1}}{x+m+1} - \frac{(\delta-m-1)(1-\epsilon)^{x+m+2}}{1! (x+m+2)} + \frac{(\delta-m-1)(\delta-m-2)(1-\epsilon)^{x+m+3}}{2! (x+m+3)} - \dots \quad (57)$$

All the terms of this series after the first term are negative, and decrease rapidly in magnitude. Hence, the error in calculating R_m should be small.

V. CALCULATIONS

We calculated the modified Bessel functions $K_0(x)$, $K_1(x)$, $I_0(x)$, and $I_1(x)$ from the integrals

$$K_0(x) = \frac{\Gamma(1/2) e^{-x}}{\Gamma(1/2)} \int_0^{\infty} e^{-xt} (t^2+2t)^{-1/2} dt, \quad (58)$$

$$K_1(x) = \frac{\Gamma(1/2) (1/2 x) e^{-x}}{\Gamma(3/2)} \int_0^{\infty} e^{-xt} (t^2+2t)^{1/2} dt, \quad (59)$$

$$I_0(x) = \frac{e^x}{\Gamma(1/2) \Gamma(1/2)} \int_0^2 e^{-xt} (2t-t^2)^{-1/2} dt, \quad (60)$$

$$I_1(x) = \frac{(1/2 x) e^x}{\Gamma(1/2) \Gamma(3/2)} \int_0^2 e^{-xt} (2t-t^2)^{1/2} dt. \quad (61)$$

On referring to Eqs. (29) and (32), we see that

$$v = -1/2 \quad (62)$$

in Eqs. (58) and (60), and

$$v = 1/2 \quad (63)$$

in Eqs. (59) and (61). Hence, the modified Stirling numbers $v_k^{-1/2+m}$ and $v_k^{1/2+m}$ are required for the coefficients of the factorial series. A short table of these numbers is given in Table 1.

Next, the coefficients a_n for the series expansions of $(1+1/2 t)^{-1/2}$, $(1-1/2 t)^{-1/2}$, $(1+1/2 t)^{1/2}$ and $(1-1/2 t)^{1/2}$ were calculated from the appropriate recurrence formulas, as shown in Table 2.

The coefficients b_ℓ were calculated from Eq. (38) for each of the four cases listed above. In addition, the partial sums

$$C_m = \sum_{\ell=0}^m b_\ell \quad (64)$$

were calculated in order to study the convergence of the factorial series.

The series $\sum_m C_m$ must converge if the corresponding factorial series is to converge. This condition is apparently violated for the functions $I_0(x)$ and $I_1(x)$, which shows why the factorial series for these functions apparently diverged. These results are given in Table 3.

The beta functions and incomplete beta functions required in the series expansions for $K_0(x)$, $K_1(x)$, $I_0(x)$, and $I_1(x)$ were calculated from formulas discussed previously. Sample tabulations are shown in Table 4. Finally, the modified Bessel functions were calculated for a limited range of variables. These results are shown in Table 5.

TABLE 1. MODIFIED STIRLING NUMBERS, $v_k^{(v)}$

v	k	0	1	2	3	4	5
...	...	1.000	-.250	-.073	-.039	-.026	-.019
...	...	1.000	.250	.135	.091	.058	.054
...	...	1.000	.750	.594	.492	.421	.369
...	...	1.000	1.250	1.302	1.289	1.253	1.209
...	...	1.000	1.750	2.260	2.607	2.844	3.007
...	...	1.000	2.250	3.469	4.570	5.538	6.360
...	...	1.000	2.750	4.927	7.305	9.742	12.156
...	...	1.000	3.250	6.635	10.935	15.924	21.410
...	...	1.000	3.750	8.594	15.586	24.616	35.493
...	...	1.000	4.250	10.802	21.383	36.411	56.061
...	...	1.000	4.750	13.260	28.451	51.966	85.112
...	...	1.000	5.250	15.969	36.914	71.999	125.010
...	...	1.000	5.750	18.927	46.898	97.291	178.523
...	...	1.000	6.250	22.135	58.529	128.697	243.849
...	...	1.000	6.750	25.594	71.930	167.092	339.653
...	...	1.000	7.250	29.302	87.227	213.476	455.091
...	...	1.000	7.750	33.260	104.544	268.869	593.645
...	...	1.000	8.250	37.469	124.008	334.365	779.160
...	...	1.000	8.750	41.927	145.742	411.121	998.863
...	...	1.000	9.250	46.635	169.672	500.356	1265.403
...	...	1.000	9.750	51.594	196.523	603.349	1585.680
...	...	1.000	10.250	56.802	225.920	721.447	1969.079
...	...	1.000	10.750	62.260	257.868	856.053	2420.492
...	...	1.000	11.250	67.969	292.852	1008.638	2952.363
...	...	1.000	11.750	73.927	330.836	1180.733	3573.708

TABLE 2. BINOMIAL COEFFICIENTS FOR SERIES EXPANSION

[illegible]

TABLE 3. PARTIAL SUMS, C_M

M	(FOR I (X)) C _M	(FOR I (X)) C _M	(FOR K (X)) C _M	(FOR K (X)) C _M
1	.1000000000+01	.1000000000+01	.1000000000+01	.1000000000+01
2	0.	0.	-.5000000000+00	.5000000000+00
3	.8333333333D-01	-.9333333333D-01	-.4166666667D-01	.2916666667D+00
4	.1041666667D+00	-.1041666667D+00	-.4166666667D-01	.2033333333D+00
5	.1187500000D+00	-.1180555556D+00	-.2447916667D-01	.1616319444D+00
6	.1329861111D+00	-.1156250000D+00	-.1814236111D-01	.1320312500D+00
7	.1483775628D+00	-.1183139054D+00	-.1392712457D-01	.1115689071D+00
8	.1655691904D+00	-.1268354001D+00	-.1121135056D-01	.9653663150D-01
9	.1849897015D+00	-.1235905120D+00	-.9297019245D-02	.8514439389D-01
10	.2070163777D+00	-.1267699119D+00	-.7991392514D-02	.7612111033D-01
11	.2220438054D+00	-.1304793276D+00	-.6820430172D-02	.6832367917D-01
12	.2605000552D+00	-.1347898414D+00	-.5981169633D-02	.6230056847D-01
13	.2928672853D+00	-.1397599840D+00	-.5303128754D-02	.5774504858D-01
14	.3296929445D+00	-.1454462447D+00	-.4757997793D-02	.5344147367D-01
15	.3716013404D+00	-.1519085092D+00	-.4301053015D-02	.4973381885D-01
.
85	.4486264325D+04	-.2132930456D+03	-.4049428749D-03	.3466639314D-02
86	.5158981027D+04	-.2421390452D+03	-.3988377917D-02	.8367300496D-02
87	.5932950354D+04	-.2749495588D+03	-.3928963534D-03	.8270263456D-02
88	.6823459192D+04	-.3122761345D+03	-.3871123161D-03	.8175449148D-02
89	.7848108405D+04	-.3547478056D+03	-.3814797434D-03	.8032782055D-02
90	.9027163886D+04	-.4030820658D+03	-.3759929874D-03	.7992190200D-02

TABLE 4. INCOMPLETE AND COMPLETE BETA FUNCTIONS

$\gamma = 15.$	$\epsilon = .96406$	
$\nu+1$	INCOMPLETE	COMPLETE
.50	.40147455340+00	.46147455340+00
1.50	.14836275920-01	.14836275920-01
2.50	.13532978110-02	.13532978110-02
3.50	.19332825860-03	.19332825870-03
4.50	.36575615500-04	.36575616500-04
5.50	.84405253820-05	.84405268850-05
6.50	.22645315000-05	.22645316030-05
7.50	.68462583100-06	.68462583360-06
8.50	.22820860890-06	.22820861120-06
9.50	.2543538240-07	.62543540220-07
10.50	.3206677130-07	.32066678860-07
11.50	.13179219200-07	.13179220710-07
12.50	.57132831400-08	.57192344580-08
13.50	.25996735020-08	.25996747530-08
14.50	.12314238770-08	.12314248830-08
15.50	.60527575760-09	.60527663750-09
16.50	.30759833340-09	.30759960270-09
17.50	.16112292830-09	.16112360140-09
18.50	.86759274110-10	.86758862290-10
19.50	.4791036120-10	.47911510520-10
20.50	.27030025590-10	.27080475510-10
21.50	.15637627500-10	.15638021070-10
22.50	.92110927520-11	.92114370680-11
23.50	.55255609820-11	.55268622410-11
24.50	.33732756740-11	.33735392900-11

TABLE 5. MODIFIED BESSEL FUNCTIONS

X	I (X) 0	I (X) 1	K (X) 0	K (X) 1	
15.	.33964937330+05	.32812492220+06	.93195564820-07	.10141729370-06	1BF, FOSN
15.	.33964937330+05	.32812492220+06	.93195564820-07	.10141729370-06	SUBROUTINE
20.	.43559282550+09	.42454973390+08	.57412378150-05	.56930579700-09	1BF, FOSN
20.	.43559282550+09	.42454973390+08	.57412378150-09	.56930579700-09	SUBROUTINE
25.	.57745606050+10	.56578651300+10	.34641615620-11	.35327780730-11	1BF, FOSN
25.	.57745606050+10	.56578651300+10	.34641615620-11	.35327780730-11	SUBROUTINE
30.	.78167229780+12	.76953203890+12	.21324774960-13	.21677320020-13	1BF, FOSN
30.	.78167229780+12	.76953203890+12	.21324774960-13	.21677320020-13	SUBROUTINE
35.	.10733981850+15	.10579412610+15	.13310351490-15	.13499173340-15	1BF, FOSN
35.	.10733981850+15	.10579412610+15	.13310351490-15	.13499173340-15	SUBROUTINE
40.	.14394774790+17	.14707396160+17	.83928611000-18	.84971319550-18	1BF, FOSN
40.	.14394774790+17	.14707396160+17	.83928611000-18	.84971319550-18	SUBROUTINE
45.	.20834140750+19	.20601334620+19	.53334561230-20	.53923945940-20	1BF, FOSN
45.	.20834140750+19	.20601334620+19	.53334561230-20	.53923945940-20	SUBROUTINE
50.	.29325537340+21	.29030785900+21	.34101677500-22	.34441022270-22	1BF, FOSN
50.	.29325537340+21	.29030785900+21	.34101677500-22	.34441022270-22	SUBROUTINE
55.	.41487895610+23	.41108986450+23	.21913102180-24	.22111422720-24	1BF, FOSN
55.	.41487895610+23	.41108986450+23	.21913102180-24	.22111422720-24	SUBROUTINE
60.	.58940770560+25	.58447515880+25	.14138978410-26	.14256320270-26	1BF, FOSN
60.	.58940770560+25	.58447515880+25	.14138978410-26	.14256320270-26	SUBROUTINE
65.	.84030398460+27	.83391485470+27	.91544673210-29	.92246195280-29	1BF, FOSN
65.	.84030398460+27	.83391485470+27	.91544673210-29	.92246195280-29	SUBROUTINE
70.	.12015889590+30	.11929750790+30	.59446613370-31	.59859736740-31	1BF, FOSN
70.	.12015889590+30	.11929750790+30	.59446613370-31	.59859736740-31	SUBROUTINE
75.	.17226390790+32	.17111160150+32	.38701170460-33	.38956329470-33	1BF, FOSN
75.	.17226390790+32	.17111160150+32	.38701170460-33	.38956329470-33	SUBROUTINE

VI. RESULTS AND CONCLUSIONS

These series expansions in terms of beta functions and incomplete beta functions were derived in order to check the accuracy of our Bessel function subroutine^{11,12} with independent calculations. The error analysis of our subroutine by theoretical methods would be very difficult, especially for the section involving continued fractions. Hence, computational efficiency is a secondary consideration for the new series expansions. Addressing the comment of the reviewer*, we believe our algorithm for the incomplete beta function is as efficient as the continued fractions of Stegun⁶ when x is large, since Eq. (54) can then be used without the remainder. We have not made any specific comparison for small values of x .

Since factorial series are a method of summing certain asymptotic series, they are most effective for large and moderately large values of the argument. The convergence is slow when x is small, so that an excessive number of terms is required. Round-off error may occur in the coefficients b_k and in summing the series. Alternate methods of calculating Bessel functions, such as quadratures, are required when x is small. Subroutines used for checking should not use continued fractions or other procedures used in the subroutine, to insure the calculations are in fact independent.

The generalized factorial series for $K_0(x)$ and $K_1(x)$ yield accurate numerical values when x is only moderately large and the Hankel asymptotic series is not sufficiently accurate. On the other hand, the new series for $I_0(x)$ and $I_1(x)$ have the same range of accuracy as the Hankel asymptotic series, and do not offer any computational advantage. This is probably due to the apparent divergence of the series for the partial sums of b_k .

The generalized factorial series for $K_0(x)$ and $K_1(x)$ are being extended to the complex plane. Programming of generalized factorial series for the ordinary Bessel functions is in progress. Alternate methods of calculating

¹¹A. S. Elder, "Formulas for Calculating Bessel Functions of Integral Order and Complex Argument," BRL Report No. 1423, November, 1968.

¹²K.L. Zimmerman, A.S. Elder and A.K. Depue, "User's Manual for the BRL Subroutine to Calculate Bessel Functions of Integral Order and Complex Argument," ARBRL-TR-02068, May 1978.

*See ACKNOWLEDGMENTS

$I_n(x)$ are also being considered, as the results obtained in this paper fell short of our expectations.

The modified Stirling numbers, as defined in this paper, are more useful for computations involving Wasow's algorithm than the original Stirling numbers, as problems arising from very large numbers and overrun of the computer registers are entirely avoided. The method of scaling employed in this paper, which merely involves the omission of gamma functions in the definition of Stirling numbers, is more effective than the method of scaling used in previous paper by the authors¹³.

ACKNOWLEDGMENTS

We acknowledge the assistance of Prof. J.B. Rosser, Mathematics Research Center, during the early stages of this analysis. Dr. M.A. Weinberger, Director of Mathematics and Statistics, Operational Research and Analysis Establishment, Department of National Defence, Canada, noted several errors during the course of the discussion. Mr. E.L. Leese, Dr. Weinberger's predecessor, reviewed the analysis in detail and corrected several formulas. Dr. R.N. Buchal made several helpful suggestions and later provided a copy of his report.

¹³A.S. Elder and E.M. Wineholt, "Factorial and Hadamard Series for Bessel Functions of Orders Zero and One," *Transactions of the Twenty-Second Conference of Army Mathematicians, Army Research Office, 1977, pp. 277- 287.*

REFERENCES

1. R. N. Buchal and G. Duffy, "Factorial Series Representations as Check Solutions in the Development of Special Function Subroutines," Argonne National Laboratory Technical Memorandum No. 200, May 1970.
2. G. Doetsch, Hanbuch Der Laplace-Transformation, Band II, Birkhauser Verlag, Basel and Stuttgart, 1955, pages 201-232.
3. L.M. Milne - Thomson, The Calculus of Finite Differences, MacMillan and Co., Limited, London, 1933.
4. W. Wasow, Asymptotic Expansions for Ordinary Differential Equations, Interscience Publishers, a Division of John Wiley & Sons, Inc., New York, pages 323-331.
5. J. B. Rosser, "Factorial Expansions for Certain Bessel Functions," Mathematics Research Center Summary Report No. 1572, November 1975.
6. M. Abramowitz and L.A. Stegun, Handbook of Mathematical Functions, Graphs, and Mathematical Tables. National Bureau of Standards, Washington, D.C., No. 55, Applied Mathematics Series, June 1964. See Formulas 24.1.3, page 824, for discussion of Stirling numbers. Continued fractions for the incomplete beta functions are given in Formulas 26.5.8, page 944.
7. C. Jordan, Calculus of Finite Differences, Rottig and Romwalter, Saproon, Hungary, 1939. Stirling numbers are discussed in Chapter 4, pages 142-229.
8. E.T. Copson, An Introduction to the Theory of Functions of a Complex Variable, Oxford, 1935, pages 218-219.
9. K. Knapp, Infinite Sequences and Series, Dover Publications, New York, 1956, pages 82-85.

10. H. Kuki, Communications of the ACM, Vol 15, No. 4, April 1972. The subroutine CDLGAM was extracted from Algorithm 421.
11. A. S. Elder, "Formulas for Calculating Bessel Functions of Integral Order and Complex Argument," BRL Report No. 1423, November, 1968.
12. K.L. Zimmerman, A.S. Elder and A.K. Depue, "User's Manual for the BRL Subroutine to Calculate Bessel Functions of Integral Order and Complex Argument," ARBRL-TR-02068, May 1978.
13. A.S. Elder and E.M. Wineholt, "Factorial and Hadamard Series for Bessel Functions of Orders Zero and One," Transactions of the Twenty-Second Conference of Army Mathematicians, Army Research Office, 1977, pp 277-287.

DISTRIBUTION LIST

<u>No. of Copies</u>	<u>Organization</u>	<u>No. of Copies</u>	<u>Organization</u>
12	Administrator Defense Technical Info Center ATTN: DTIC-DDA Cameron Station Alexandria, VA 22314	1	Commander US Army BMD Advanced Technology Center ATTN: BMDATC-M P.O. Box 1500 Huntsville, AL 35804
1	Director Defense Nuclear Agency Arlington, VA 22209	1	Commander US Army Armament Research and Development Command ATTN: DRDAR-TSE, L. Goldsmith Dover, NJ 07801
1	Commander US Army Materiel Development and Readiness Command ATTN: DRCDMD-ST 5001 Eisenhower Avenue Alexandria, VA 22333	2	Commander US Army Armament Research and Development Command ATTN: DRDAR-SC, B. Shulman DRDAR-SC, Mr. Webster Dover, NJ 07801
5	Commander US Army Armament Research and Development Command ATTN: DRDAR-LCR-R, C. Moore DRDAR-LCS, K. Rubin DRDAR-LCA, W. Williver DRDAR-LCA, S. Bernstein DRDAR-LCA, B. Knutulsky Dover, NJ 07801	2	Commander US Army Armament Research and Development Command ATTN: DRDAR-SE Dover, NJ 07801
2	Commander US Army Armament Research and Development Command ATTN: DRDAR-QA Dover, NJ 07801	1	Commander US Army Armament Research and Development Command ATTN: DRDAR-FU Dover, NJ 07801
2	Commander US Army Armament Research and Development Command ATTN: Dev. Project Office For Selected Ammo DRDAR-DP Dover, NJ 07801	3	Commander US Army Armament Research and Development Command ATTN: DRDAR-TSS (2 cys) DRDAR-TDC Dover, NJ 07801
2	Director Defense Advanced Research Projects Agency 1400 Wilson Boulevard Arlington, VA 22209	1	Commander US Army Armament Materiel Readiness Command ATTN: DRSAR-LEP-L, Tech Lib Rock Island, IL 61299

DISTRIBUTION LIST

<u>No. of Copies</u>	<u>Organization</u>	<u>No. of Copies</u>	<u>Organization</u>
1	Commander US Army Aviation Research and Development Command ATTN: DRDAV-E 4300 Goodfellow Blvd St. Louis, MO 63120	1	Commander US Army Communications Research & Development Cmd ATTN: DRDCO-PPA-SA Fort Monmouth, NJ 07703
1	Director US Army Air Mobility Research and Development Laboratory Ames Research Center Moffett Field, CA 94035	1	Commander US Army Harry Diamond Labs 2800 Powder Mill Road Adelphi, MD 20783
1	Commander US Army Electronics Research and Development Command Technical Support Activity ATTN: DELSD-L Fort Monmouth, NJ 07703	1	Commander US Army MissileCommand ATTN: DRSMI-R Redstone Arsenal, AL 35898
2	Commander US Army Mobility Equipment Research &Development Cmd Fort Belvoir, VA 22060	1	Commander US Army Missile Command ATTN: DRSMI-RBL Redstone Arsenal, AL 35898
1	Commander US Army Missile Command ATTN: DRSMI-YDL Redstone Arsenal, AL 35898	2	Commander US Army Tank Automotive Research & Development Cmd ATTN: DRDTA-UL Technical Director Warren, MI 48090
2	Project Manager Division Air Defense Gun ATTN: DRCPM-ADG Dover, NJ 07801	3	Project Manager Cannon Artillery Weapons System ATTN: DRCPM-CAWS Dover, NJ 07801
3	Director Benet Weapons Laboratory USA ARRADCOM ATTN: Dr. T. Simpkins Dr. T. Davidson DRDAR-LCB-TL Watervliet, NY 12189	2	Project Manager Tank Main Armament Systems ATTN: DRCPM-TMA Dover, NJ 07801
2	Director US Army Research and Technology Laboratories Ames Research Center Moffett Field, CA 94035	2	Product Manager M110E2 Weapon System, DARCM ATTN: DRCPM-M110E2 Rock Island, IL 61299

DISTRIBUTION LIST

<u>No. of Copies</u>	<u>Organization</u>	<u>No. of Copies</u>	<u>Organization</u>
3	Commander US Army Research Office P.O. Box 12211 ATTN: Technical Director Engineering Division Metallurgy & Materials Division Research Triangle Park NC 27709	1	Commander US Army Research Office ATTN: Dr. J. Chandra Research Triangle Park NC 27709
1	Commander Naval Air Systems Command Washington, DC 20360	2	Director US Army TRADOC Systems Analysis Activity ATTN: ATAA-SL (Tech Lib) Director White Sands Missile Range NM 88002
1	Commander Naval Sea Systems Command Washington, DC 20362	1	Commander Naval Air Development Center, Johnsville Warminster, PA 18974
1	Commander Naval Missile Center Point Mugu, CA 93041	2	Commander David W. Taylor Naval Ship Research & Development Center Bethesda, MD 20084
2	Commander Naval Surface Weapons Center Dahlgren, VA 22448	2	Commander Naval Weapons Center China Lake, CA 93555
2	Commander Naval Surface Weapons Center Silver Spring, MD 20910	1	Commander Naval Research Laboratory Washington, DC 20375
2	Project Manager Nuclear Munitions ATTN: DRCPM-NUC Dover, NJ 07801	1	Commander Naval Ordnance Station Indian Head, MD 20640
1	Product Manager for 30 mm Ammunition ATTN: DRCPM-AAH-30mm Dover, NJ 07801	2	AFATL Eglin AFB, FL 32542
1	Director US Army Materials and Mechanics Research Center ATTN: DRXMR-ATL (1 cy) Watertown, MA 02172		

DISTRIBUTION LIST

<u>No. of Copies</u>	<u>Organization</u>	<u>No. of Copies</u>	<u>Organization</u>
2	Director National Aeronautics and Space Administration Langley Research Center Langley Station Hampton, VA 23365	1	BLM Applied Mechanics Consultants ATTN: Dr. A. Boresi 3310 Willett Dr. Laramie, WY 82070
1	Director Los Alamos Scientific P.O. Box 1663 Los Alamos, NM 87544	1	S&D Dynamics, Inc. ATTN: Dr. M. Soifer 755 New York Ave. Huntington, NY 11743
1	Director Lawrence Livermore Laboratory P.O. Box 808 Livermore, CA 94550	1	Stanford University Stanford Linear Accelerator Center Stanford, CA 94305
1	CALSPAN Corp. ATTN: E. Fisher P.O. Box 400 Buffalo, NY 14225	1	Towson State University Department of Mathematics Towson, MD 21204
1	Southwest Research Institute ATTN: P. Cox 8500 Culebra Road San Antonio, TX 78228	1	University of Colorado Department of Aerospace Engineering ATTN: Prof. G. Inger Boulder, CO 80309
1	Superintendent Naval Postgraduate School ATTN: Dir of Lib Monterey, CA 93940	1	University of Illinois Department of Mathematics ATTN: Dr. E. Frank Urbana, IL 61801
2	AFRPL (W. Andrepont;) T. Park) Edwards, AFB, CA 93523	5	University of Wisconsin- Madison Mathematics Research Center ATTN: Dr. J. Nohel Dr. C. de Boor Dr. G. Box Dr. B. Noble Dr. J.B. Rosser 610 Walnut Street Madison, WI 53706
2	AFWL/SUL Kirtland AFB, NM 87115		
1	Headquarters National Aeronautics and Space Administration Washington, DC 20546		
1	Director National Aeronautics and Space Administration Manned Spacecraft Center ATTN: Lib Houston, TX 77058		

DISTRIBUTION LIST

<u>No. of Copies</u>	<u>Organization</u>
1	Virginia Commonwealth University Department of Math. Sciences 901 W. Franklin Richmond, VA 23284
2	University of Delaware Department of Mathematics Department of Mechanical Engineering Newark, DE 19711
1	University of Kentucky Department of Computer Science ATTN: Prof. H.C. Thacker, Jr. 915 Patterson Office Tower Lexington, KY 40506
1	Argonne National Laboratory ATTN: Dr. R.N. Buchal 9700 S. Cass Avenue Argonne, IL 60440

Aberdeen Proving Ground

Dir, USAMSAA
ATTN: DRXSY-D
DRXSY-MP, H. Cohen

Dir, MTD
ATTN: H. King
P. Paules

Cdr, USATECOM
ATTN: DRSTE-TO-F

Dir. USACSL, Bldg. E3516, EA
ATTN: DRDAR-CL
DRDAR-CLD
DRDAR-CLB
DRDAR-CLY
DRDAR-CLN
DRDAR-CLB-PA

USER EVALUATION OF REPORT

Please take a few minutes to answer the questions below; tear out this sheet, fold as indicated, staple or tape closed, and place in the mail. Your comments will provide us with information for improving future reports.

1. BRL Report Number _____

2. Does this report satisfy a need? (Comment on purpose, related project, or other area of interest for which report will be used.)

3. How, specifically, is the report being used? (Information source, design data or procedure, management procedure, source of ideas, etc.) _____

4. Has the information in this report led to any quantitative savings as far as man-hours/contract dollars saved, operating costs avoided, efficiencies achieved, etc.? If so, please elaborate.

5. General Comments (Indicate what you think should be changed to make this report and future reports of this type more responsive to your needs, more usable, improve readability, etc.) _____

6. If you would like to be contacted by the personnel who prepared this report to raise specific questions or discuss the topic, please fill in the following information.

Name: _____

Telephone Number: _____

Organization Address: _____

----- FOLD HERE -----

Director
US Army Ballistic Research Laboratory
Aberdeen Proving Ground, MD 21005

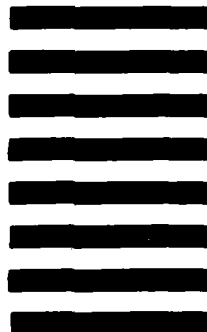


NO POSTAGE
NECESSARY
IF MAILED
IN THE
UNITED STATES

OFFICIAL BUSINESS
PENALTY FOR PRIVATE USE, \$300

BUSINESS REPLY MAIL
FIRST CLASS PERMIT NO 12062 WASHINGTON, DC
POSTAGE WILL BE PAID BY DEPARTMENT OF THE ARMY

Director
US Army Ballistic Research Laboratory
ATTN: DRDAR-TSB -S
Aberdeen Proving Ground, MD 21005



----- FOLD HERE -----

