

AD-A116 156

WISCONSIN UNIV-MADISON MATHEMATICS RESEARCH CENTER
A UNIFYING NOTE ON FATOU'S LEMMA IN SEVERAL DIMENSIONS.(U)

F/G 12/1

APR 82 E J BALDER

DAAG29-80-C-0041

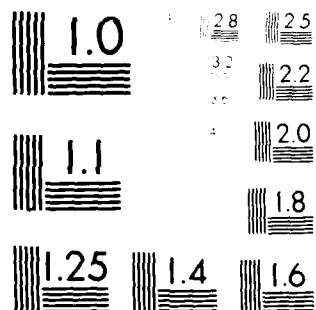
UNCLASSIFIED

MRC-TSR-2368

NL

1 08
AD-A
116 156

END
DATE
FILMED
07-82
DTIC



MICROCOPY RESOLUTION TEST CHART

AD A116156

MRC Technical Summary Report #2368

A UNIFYING NOTE ON FATOU'S LEMMA
IN SEVERAL DIMENSIONS

E. J. Balder

**Mathematics Research Center
University of Wisconsin-Madison
610 Walnut Street
Madison, Wisconsin 53706**

April 1982

(Received March 24, 1982)

**Approved for public release
Distribution unlimited**

Sponsored by

U. S. Army Research Office
P. O. Box 12211
Research Triangle Park
North Carolina 27709

1982

82 06 29 040

A

DTIC FILE COPY

UNIVERSITY OF WISCONSIN - MADISON
MATHEMATICS RESEARCH CENTER

A UNIFYING NOTE ON FATOU'S LEMMA
IN SEVERAL DIMENSIONS

E. J. Balder^{*}

Technical Summary Report #2368

April 1982

ABSTRACT

A general version of Fatou's lemma in several dimensions is presented. It generalizes the Fatou lemmas given by Schmeidler (1970), Hildenbrand (1974), Cesari-Suryanarayana (1978) and Artstein (1979). Also, it is equivalent to an abstract variational existence result that extends and generalizes results by Aumann-Perles (1965), Berliocchi-Lasry (1973), Artstein (1974) and Balder (1979) in several respects.

AMS (MOS) Subject Classification: 49A50

Key Words: Fatou's lemma in several dimensions, variational
problems arising in economics, relaxed control theory.

Work Unit Number 1 - Applied Analysis

^{*}Mathematical Institute, University of Utrecht, The Netherlands.

Sponsored by the United States Army under Contract No. DAAG29-80-C-0041.

SIGNIFICANCE AND EXPLANATION

Fatou's Lemma for functions of one variable is an important, classical tool of real analysis. Less known, but equally important for a number of applications (e.g. mathematical economics and relaxed controls) are various attempts at extensions of this result to several variables. The present paper presents a general Fatou lemma in several dimensions, equivalent to a variational existence theorem; the lemma contains most other such known multidimensional results as a special case.



Accession For
NTIS GRANT
LIFE TAB
Unannounced
Self-Initiation

The responsibility for the wording and views expressed in this descriptive summary lies with MRC, and not with the author of this report.

A UNIFYING NOTE ON FATOU'S LEMMA IN SEVERAL DIMENSIONS

E. J. Balder^{*}

1. Main results.

Let (T, \mathcal{T}, μ) be a finite measure space and m a prescribed dimension. Let $L_1^m \equiv L_1^m(T, \mathcal{T}, \mu)$ be the space of all integrable functions from T into \mathbb{R}^m . For any $y \in \mathbb{R}^m$ we shall define y^+, y^- in \mathbb{R}^m by $(y^+)^i \equiv \max(y^i, 0)$, $i = 1, \dots, m$ and $y^- \equiv (-y)^+$. In this note we introduce a pair of equivalent existence results, one of which is the following version of Fatou's lemma in several dimensions.

Fatou Lemma. Suppose $\{f_k\} \subset L_1^m$ is such that

(1) $\{f_k^-\}$ is uniformly integrable,

(2) $\lim_k \int f_k \, d\mu$ exists (in \mathbb{R}^m).

Then there exists $f_* \in L_1^m$ with

(3) $f_*(t)$ is a limit point of $\{f_k(t)\}$ a.e. in T ,

(4) $\int f_* \, d\mu \leq \lim_k \int f_k \, d\mu$.

This lemma generalizes similar results by Schmeidler (1970), Hildenbrand (1974), Cesari-Suryanarayana (1978) and Artstein (1979).

To begin with, it clearly generalizes Schmeidler's original result;

this is obtained by setting $f_k^- \equiv 0$ for all k . Further, the result in Cesari-Suryanarayana (1978, 2.2) follows from it, since by (3) certainly $f_*(t)$ belongs to the closure of $\{f_k(t)\}$ for a.e. t in T .

^{*}Mathematical Institute, University of Utrecht, The Netherlands.

[The stronger result in (3) is essential for a lot of applications!] Moreover, Cesari and Suryanarayana require (T, \mathcal{T}, μ) to be nonatomic. [Since they do not provide a proof of their version of Fatou's lemma, it is not possible to determine whether this restriction could be lifted.] Because the original version of Fatou's lemma in Hildenbrand (1974, p.69) is a special case of the later result by Artstein (1979), it suffices to show that the latter result also follows from our version of Fatou's lemma [Hildenbrand (1974) requires additionally that $\{f_k(t)\}$ be pointwise bounded].

Corollary 1. Suppose $\{f_k\} \subset L_1^m$ is such that

$\{f_k\}$ is uniformly integrable,

$\lim_k \int f_k d\mu$ exists.

Then there exists $f_* \in L_1^m$ with

$f_*(t)$ is a limit point of $\{f_k(t)\}$ a.e. in T ,

$\int f_* d\mu = \lim_k \int f_k d\mu$.

Proof. Apply the Fatou lemma to $\{(f_k, -f_k)\}$. This gives existence of $(f_*, -f^*) \in L_1^{2m}$ with $(f_*(t), -f^*(t))$ a limit point of $\{(f_k(t), -f_k(t))\}$ a.e. in T and $\int f_* \leq \lim_k \int f_k \leq \int f^*$. The former property gives that $f_*(t) = f^*(t)$ a.e. in T . QED

Before stating other consequences of the Fatou lemma, we shall need some definitions and notation. Suppose S is a metrizable Lusin space (alias standard Borel space) [Dellacherie-Meyer (1975, III.15)]¹. The Borel σ -algebra on S is denoted by $\mathcal{B}(S)$.

¹For instance, every Polish (separable metric complete) space is metrizable Lusin.

The set of all Borel measurable functions from T into S is denoted by $M(T;S)$. A function $g : T \times S \rightarrow (-\infty, +\infty]$ is said to be a normal integrand on $T \times S$ if g is $T \times \mathcal{B}(S)$ -measurable and $g(t, \cdot)$ is lower semicontinuous on S for every t in T . The set of all [nonnegative] normal integrands on $T \times S$ is denoted by $\mathcal{G}(T;S)$ [$\mathcal{G}^+(T;S)$]. The set of all $g \in \mathcal{G}^+(T;S)$ such that $g(t, \cdot)$ is inf-compact² on S for every t in T is denoted by $H(T;S)$. For any $g \in \mathcal{G}(T;S)$, $u \in M(T;S)$ we shall write

$$I_g(u) \equiv \int g(t, u(t)) \mu(dt) \equiv \int g^+(t, u(t)) \mu(dt) - \int g^-(t, u(t)) \mu(dt),$$

where $g^+ \equiv \max(g, 0)$, $g^- \equiv \max(-g, 0)$, with the understanding that $(+\infty) - (+\infty) \equiv +\infty$ by convention. Also, for any $g \in \mathcal{G}(T;S)$, $h \in H(T;S)$ the symbolism $g^- \ll h$ will indicate the following growth property of h with respect to $g^- \equiv \max(-g, 0)$: for every $\epsilon > 0$ there exists $f_\epsilon \in L_1$ such that on $T \times S$

$$g^-(t, x) \leq \epsilon h(t, x) + f_\epsilon(t).$$

Now let X_1, X_2 be metrizable Lusin spaces and n a prescribed number. We have the following abstract variational existence result as a consequence of the Fatou lemma. Later, we shall prove a very weak version of this result from which the Fatou lemma follows. Hence, the two results are in fact equivalent.

² I.e., $\{x \in S : g(t, x) \leq \beta\}$ is compact for every $\beta \in \mathbb{R}$.

Proposition 1. Suppose $\{(x_k, u_k)\} \subset M(T; X_1 \times X_2)$ satisfies

(5) $\{x_k\}$ converges in measure to $x_0 \in M(T; X_1)$,

(6) $\sup_k I_h(u_k) < +\infty$ for some $h \in H(T; X_2)$.

Suppose also that $\{g_1, \dots, g_n\} \subset G(T; X_1 \times X_2)$ is such that

(7) $\{g_i^-(\cdot, x_k(\cdot), u_k(\cdot))\}$ is uniformly integrable, $i = 1, \dots, n$.

Then there exist a subsequence $\{u_{k_j}\}$ of $\{u_k\}$ and $u_* \in M(T; X_2)$ with

(8) $u_*(t)$ is a limit point of $\{u_{k_j}(t)\}$ a.e. in T ,

(9) $I_h(u_*) \leq \sup_k I_h(u_k)$,

(10) $I_{g_i}(x_0, u_*) \leq \liminf_{k_j} I_{g_i}(x_{k_j}, u_{k_j})$, $i = 1, \dots, n$.

Proof. Let β denote the supremum in (6). By (7) $\{I_{g_i}(x_k, u_k)\}$ is bounded from below by a constant for every i , $1 \leq i \leq n$. Hence, there is a subsequence $\{(x_{k_j}, u_{k_j})\}$ of $\{(x_k, u_k)\}$ such that for every i , $1 \leq i \leq n$, $\{I_{g_i}(x_{k_j}, u_{k_j})\}$ converges to some $\beta_i \in (-\infty, +\infty]$ and $\{I_h(x_{k_j}, u_{k_j})\}$ to some $\beta_{n+1} \in [0, \beta]$. Rather than extracting a subsequence once more, we may suppose without loss of generality that

$x_{k_j}(t) \rightarrow x_0(t)$ a.e. in T , by (5) [Hildenbrand (1974, p.47)]. Let E denote the (possibly empty) set of those i , $1 \leq i \leq n$, for which

$\beta_i < +\infty$. Define f_{k_j} to consist of $e + 1$ component functions $g_i(\cdot, x_{k_j}(\cdot), u_{k_j}(\cdot))$, $i \in E$, and $h(\cdot, u_{k_j}(\cdot))$. Here e stands for the number of indices in E . In view of (7), $g_i(\cdot, x_{k_j}(\cdot), u_{k_j}(\cdot))$ is integrable whenever $I_{g_i}(x_{k_j}, u_{k_j}) < +\infty$, so our construction of E gives $f_{k_j} \in L_1^{e+1}$ for sufficiently large k_j . Now condition (1) of the Fatou lemma holds by (7), and (2) holds in view of the choice of

$\{(x_{k_j}, u_{k_j})\}$. By the Fatou lemma there exists $f_* \in L_1^{e+1}$ such that $f_*(t)$ is a limit point of $\{f_{k_j}(t)\}$ a.e. in T and $f_*^i \leq \beta_i$ for every $i \in E \cup \{e+1\}$. It follows that for a.e. t in T there exist a sub-

sequence $\{k_1\}$ of $\{k_j\}$ - quite possibly depending upon t - such that $g_i(t, x_{k_1}(t), u_{k_1}(t)) \rightarrow f_*^i(t)$ for every $i \in E$ and with $h(t, u_{k_1}(t)) \rightarrow f_*^{e+1}(t) < +\infty$. By inf-compactness of $h(t, \cdot)$, $\{u_{k_1}(t)\}$ contains a subsequence converging to some $u_t \in X_2$. Note that u_t belongs to $\Omega(t) \equiv \bigcap_n \text{cl}_{k_j \geq n} \{u_{k_j}(t)\}$ ³. From the facts that $x_{k_j}(t) \rightarrow x_0(t)$ a.e. in T and that $g_i(t, \dots)$ is lower semicontinuous, we conclude that for a.e. t in T there exists $u_t \in \Omega(t)$ such that $g_i(t, x_0(t), u_t) \leq f_*^i(t)$, $i \in E$, and $h(t, u_t) \leq f_*^{e+1}(t)$. By Himmelberg (1975, Theorem 6.1) the graph of the multifunction Ω is easily seen to be $T \times B(X_2)$ -measurable. Hence, the set of all $(t, x) \in T \times X_2$ such that $x \in \Omega(t)$, $g_i(t, x_0(t), x) \leq f_*^i(t)$, $i \in E$, and $h(t, x) \leq f_*^{e+1}(t)$ is also $T \times B(X_2)$ -measurable. By Aumann's measurable selection theorem [Himmelberg (1975, Theorem 5.2)] there exists $u_* \in M(T; X_2)$ such that a.e. in T $u_*(t) \in \Omega(t)$, $g_i(t, x_0(t), u_*(t)) \leq f_*^i(t)$ for each $i \in E$ and $h(t, u_*(t)) \leq f_*^{e+1}(t)$. This gives $I_h(u_*) \leq \int f_*^{e+1} \leq \beta$ and $I_{g_i}(x_0, u_*) \leq \beta_i$ for all i , $1 \leq i \leq n$, since the inequality holds trivially when $i \notin E$.

QED

Corollary 2. Suppose $h \in H(T; X_2)$ and $\{g_0, g_1, \dots, g_n\} \subset G(T; X_2)$ satisfy (11) $g_i^- \ll h$, $i = 0, 1, \dots, n$.

For given constants $\alpha_1, \dots, \alpha_n, \alpha_{n+1}$, let M be the set of all $u \in M(T; X_2)$ which satisfy the following constraints

$$(12) \quad I_{g_i}(u) \leq \alpha_i, \quad i = 1, \dots, n \quad \text{and} \quad I_h(u) \leq \alpha_{n+1}.$$

Suppose that M is nonempty; then there exists $u_* \in M$ such that

$$(13) \quad I_{g_0}(u_*) = \inf_{u \in M} I_{g_0}(u).$$

³ Here cl stands for closure.

Proof. Since M is nonempty, there exists a minimizing sequence $\{u_k\}$ in M . [That is, $I_{g_0}(u_k) \rightarrow \inf_M I_{g_0}$.] Now (11)-(12) imply the validity of (6)-(7). It follows from applying Proposition 1 that there exist a subsequence $\{u_{k_j}\}$ of $\{u_k\}$ and $u_* \in M(T; X_2)$ such that (8), (9) and (10) hold for $i = 0, 1, \dots, n$. By our choice of $\{u_k\}$, u_* then satisfies (12) and (13). QED

Corollary 3. Suppose T is the unit interval $[0, 1]$, equipped with Lebesgue σ -algebra and measure. Suppose $h \in H(T; X_2)$ and $\{g_0, g_1, \dots, g_n\} \subset G(T; X_2)$ satisfy
 (14) $g_i^- \ll h$, $i = 0, 1, \dots, n$.

For given constants $\alpha_1, \dots, \alpha_n, \alpha_{n+1}$ let M' be the set of all $(t_0, t_1, u) \in [0, 1] \times [0, 1] \times M(T; X_2)$ which satisfy

$$(15) \quad \int_{t_0}^{t_1} g_i(t, u(t)) dt \leq \alpha_i, \quad i = 1, \dots, n, \quad \text{and} \quad I_h(u) \leq \alpha_{n+1}.$$

Suppose that M' is nonempty; then there exists $(t_{0*}, t_{1*}, u_*) \in M'$ such that

$$(16) \quad \int_{t_{0*}}^{t_{1*}} g_0(t, u_*(t)) dt = \inf \left\{ \int_{t_0}^{t_1} g_0(t, u(t)) dt : (t_0, t_1, u) \in M' \right\}.$$

Proof. M' being nonempty, there exists a minimizing sequence $\{(t_{0,k}, t_{1,k}, u_k)\}$ in M' . By compactness of $[0, 1] \times [0, 1]$ we may suppose without loss of generality that $t_{0,k} \rightarrow t_{0*}$, $t_{1,k} \rightarrow t_{1*}$ for some t_{0*}, t_{1*} in $[0, 1]$. Take $X_1 \equiv \{0, 1\}$ and define x_k to be the characteristic function $1_{(t_{0,k}, t_{1,k})}$ of the interval $(t_{0,k}, t_{1,k})$. Define $g'_i \in G(T; X_1 \times X_2)$ by $g'_i(t, x_1, x_2) \equiv x_1 \cdot g_i(t, x_2)$. Condition (5)

of Proposition 1 is fulfilled by the choice of $\{(t_{0,k}, t_{1,k})\}$. For $\{g'_0, \dots, g'_n\}$ (6)-(7) hold by virtue of (14)-(15). By Proposition 1 there exist a subsequence $\{(t_{0,k_j}, t_{1,k_j}, u_{k_j})\}$ and $u_* \in M(T; X_2)$ such that (9) holds for $i = 0, 1, \dots, n$ [and with $x_0 = 1_{(t_{0*}, t_{1*})}$]. This shows that (t_{0*}, t_{1*}, u_*) has the required properties.

QED

Like its counterpart, Proposition 1 is a novel result. We should point out that it strongly resembles a classical lower semicontinuity result for integral functionals; cf. Cesari (1974b), Ioffe (1977), Balder (1981b, 1982, 1983) and their references. There seem to be no references in the literature on Fatou's lemma that indicate the reciprocity between this lemma and abstract variational existence results.

Corollary 2 extends the existence results obtained this far for a well-known variational problem concerning the optimal selection of continuous-time allocation plans, to the case where the underlying measure space may have atoms. Influenced by Yaari (1964), the first such result was given by Aumann-Perles (1965) [for T, X_2 Euclidean and μ Lebesgue]. Subsequently, this result was generalized by Berliocchi-Lasry (1973) [T, X_2 locally compact Polish and μ nonatomic], Artstein (1974) [T abstract, X_2 Polish and μ nonatomic] and Balder (1979) [T abstract, X_2 metrizable Lusin and μ nonatomic]. Corollary 3 deals with a variable consumption period. In its present abstract form it seems to be a new result. Less abstract versions of it would turn out to be well-known existence results for optimal

control with variable time "without convexity"; cf. Cesari (1974a) and forthcoming work by the present author. [Incidentally, it is interesting to note that a version of Fatou's lemma in several dimensions was also used to deal with existence results for optimal control "with convexity"; cf. Cesari-Suryanarayana (1978), Angell (1981).]

2. Proof of the Fatou lemma.

We shall derive the Fatou lemma from a very weak version of Proposition 1, to be proven here by using what are essentially the main results of relaxed control theory combined with Lyapunov's theorem. This would seem to suggest a new approach to the Fatou lemma. Of course, since Proposition 1 was already shown to follow from the Fatou lemma, this also establishes the equivalence of this lemma and Proposition 1.

In the weak version of Proposition 1 presented below, Proposition C, we shall only need to take $X_1 \equiv \mathbb{N} \cup \{\infty\}$, $X_2 \equiv \mathbb{R}^m$.

Observe that these are both locally compact Polish spaces. Before proving Proposition C we shall introduce some facts, notation and terminology about relaxed control functions. Practically all of this can be found in Berliocchi-Lasry (1973) and Warga (1972); in a more abstract setting it can all be found in Balder (1979 , 1981 a-b).

Let S be a locally compact Polish space. Such a space is countable at infinity, so its Alexandrov (one point) compactification \hat{S} is metrizable [Hildenbrand (1974, p.15)]. Let ρ stand for a fixed compatible metric on \hat{S} . Define $C(\hat{S})$ to be the set of all continuous functions on \hat{S} and $C_e(\hat{S})$ to be the set of all elementary functions c in $C(\hat{S})$ that are of the form $c = \rho(.,x) + \gamma$ for some $x \in \hat{S}$, $\gamma \in \mathbb{R}$.

Lemma A. For every normal integrand $g \in G^+(T;S)$ [$g \in G^+(T;\hat{S})$] there exist a null set N and sequences $\{T_p\}$ in T , $\{c_p\}$ in $C_e(\hat{S})$ such that on $(T \setminus N) \times S$ [$(T \setminus N) \times \hat{S}$]

$$g(t,x) = \sup_p 1_{T_p}(t) c_p(x).$$

Proof [Cf. Balder (1981a, proof of theorem 1)]. Let $\{x_i\}$ be a countable dense subset of S and let $\{r_j\}$ be an enumeration of the rationals. For $i,j,k \in \mathbb{N}$ we define $c_{ijk} \in C_e(\hat{S})$ by $c_{ijk} \equiv r_j - k\rho(x_i,.)$ and set $B_{ijk} \equiv \{t \in T: c_{ijk}(x) \leq g(t,x) \text{ for all } x \in S\}$. Then B_{ijk} is the projection of the set of all $(t,x) \in T \times S$ such that $c_{ijk}(x) > g(t,x)$ onto T . By a well-known projection theorem [Castaing-Valadier (1977, III.23)], the set B_{ijk} belongs to the completion of the σ -algebra T with respect to μ . Hence, there exists for every i,j,k a set T_{ijk} in T such that $T_{ijk} \subset B_{ijk}$ and $B_{ijk} \setminus T_{ijk}$ is contained in a null set N_{ijk} . Using the lower semicontinuity and nonnegativity of the function $g(t,.)$, it is not hard to see that $\sup_{i,j,k} 1_{B_{ijk}}(t) c_{ijk}(x) = g(t,x)$ on $T \times S$. Taking N to be the union of all N_{ijk} , the result for the first case now follows. The second case is proven in an entirely similar way.

QED

Let $M(\hat{S})[M_1^+(\hat{S})]$ be the set of all signed bounded measures [probability measures] on $(\hat{S}, \mathcal{B}(\hat{S}))$. We shall equip these with the [relative] vague topology $\sigma(M(\hat{S}), \mathcal{C}(\hat{S}))$ [Dellacherie-Meyer (1975, III.54)]. Let $\hat{L}_1 \equiv L_1(T, \mathcal{T}, \mu; \mathcal{C}(\hat{S}))$ be the space of (equivalence classes of) integrable functions from T into $\mathcal{C}(\hat{S})$. The topological dual of \hat{L}_1 can be identified with the space $\hat{L}_\infty \equiv L_\infty(T, \mathcal{T}, \mu; M(\hat{S}))$ of (equivalence classes of) essentially bounded Borel measurable functions from T into $M(\hat{S})$ [Ionescu-Tulcea (1969, VII.7); cf. Meyer (1966, p.301) for a short proof]. More precisely, \hat{L}_∞ consists of (equivalence classes of) functions $\hat{\delta} : T \rightarrow M(\hat{S})$ that are vaguely Borel and have $\text{ess sup}_t |\hat{\delta}(t)|_V < +\infty$, where $|\cdot|_V$ denotes the total variation norm. Let \hat{R} be the set of (equivalence classes of) Borel measurable functions $\hat{\delta} : T \rightarrow M(\hat{S})$ such that $\hat{\delta}(t) \in M_1^+(\hat{S})$ a.e. in T ; then evidently $\hat{R} \subset \hat{L}_\infty$. We shall equip \hat{L}_∞ [\hat{R}] with the [relative] topology $\sigma(\hat{L}_\infty, \hat{L}_1)$; note that this makes \hat{L}_∞ into a Hausdorff locally convex space. By abuse of notation we write for any $\hat{\delta} \in \hat{R}$, $g \in G(T; \hat{S})$

$$I_g(\hat{\delta}) \equiv \int g(t, \hat{\delta}(t)) \mu(dt) \equiv \int g^+(t, \hat{\delta}(t)) \mu(dt) - \int g^-(t, \hat{\delta}(t)) \mu(dt),$$

with the provision $(+\infty) - (+\infty) \equiv +\infty$. Here

$g^+(t, \hat{\delta}(t)) \equiv \int_{\hat{S}} g^+(t, x) \hat{\delta}(t)(dx)$, etc. It follows easily from Lemma

A that, modulo abuse in our notation, this integral is well-defined.

Our next result forms the centerpiece of relaxed control theory;

cf. Warga (1972, IV), Castaing-Valadier (1977, V.2).

Theorem B. (i) \hat{R} is compact and sequentially compact.
(ii) For every $g \in G^+(T; \hat{S})$ the function $I_g : \hat{R} \rightarrow [0, +\infty]$ is lower semicontinuous.

Proof. (i) Compactness of the closed convex set \hat{R} in the unit ball of \hat{L}_∞ follows by the Alaoglu-Bourbaki theorem [Holmes (1975, 12.D)]. Sequential compactness of \hat{R} is seen as follows; cf. Nölle-Plachky (1967), Kirschner (1976). Given a sequence $\{\hat{\delta}_k\}$ in \hat{R} , let T' be the sub- σ -algebra of T generated by $\{\hat{\delta}_k\}$. Since $M_1^+(\hat{S})$ is metrizable and separable, T' is countably generated. Hence, $\hat{L}'_1 \equiv L_1(T, T', \mu; C(\hat{S}))$ is separable, so by Holmes (1975, 12.F) the set \hat{R}' of all (equivalence classes of) T' -measurable functions $\hat{\delta} : T \rightarrow M_1^+(\hat{S})$, is metrizable for the topology $\sigma(\hat{L}'_\infty, \hat{L}'_1)$, where $\hat{L}'_\infty \equiv L_\infty(T, T', \mu; M(\hat{S}))$. Also, \hat{R}' is compact for $\sigma(\hat{L}'_\infty, \hat{L}'_1)$. Hence, a subsequence of $\{\hat{\delta}_k\}$ converges to some $\hat{\delta}_0 \in \hat{R}'$ in the topology $\sigma(\hat{L}'_\infty, \hat{L}'_1)$. It follows easily from the conditional expectation result of Castaing-Valadier (1977, VIII.32) that this subsequence converges now also to $\hat{\delta}_0$ in $\sigma(\hat{L}_\infty, \hat{L}_1)$.
(ii) Given $g \in G^+(T; \hat{S})$, we can apply Lemma A. In the notation of that lemma, define $\hat{g}_q \equiv \max[\sup_{p \leq q} 1_{T_p} c_p, 0]$. Then $\hat{g}_q \uparrow g$ on $(T \setminus N) \times \hat{S}$. Note that each \hat{g}_q is a version of an equivalence class in \hat{L}_1 . Hence, I_g is the supremum of a collection of continuous functions on \hat{R} , as follows by applying the monotone convergence theorem.

QED

We are now in a position to prove Proposition C, a weak version of Proposition 1. Let $\hat{N} \equiv N \cup \{\infty\}$ denote the usual Alexandrov compactification of N ("addition of point at infinity").

Proposition C. Suppose $\{u_k\} \subset M(T; \mathbb{R}^m)$ satisfies

$$(17) \sup_k I_h(u_k) < +\infty \text{ for some } h \in H(T; \mathbb{R}^m).$$

Suppose also that $g_0 \in G^+(T; \mathbb{N} \times \mathbb{R}^m)$ and $\{g_1, \dots, g_n\} \subset G(T; \mathbb{R}^m)$ are such that

$$(18) g_i^- \ll h, i = 1, \dots, n.$$

Then there exist a subsequence $\{u_{k_j}\}$ of $\{u_k\}$ and $u_* \in M(T; \mathbb{R}^m)$ with

$$(19) I_h(u_*) \leq \sup_k I_h(u_k),$$

$$(20) I_{g_0}(\infty, u_*) \leq \liminf_{k_j} I_{g_0}(k_j, u_{k_j}),$$

$$(21) I_{g_i}(u_*) \leq \liminf_{k_j} I_{g_i}(u_{k_j}), i = 1, \dots, n.$$

Proof. By (17)-(18) the sequences $\{I_{g_0}(k, u_k)\}$ and $\{I_{g_i}(u_k)\}$, $i = 1, \dots, n$, are bounded below, so there exists a subsequence $\{u_{k_j}\}$ of $\{u_k\}$ such that $\{I_{g_0}(k_j, u_{k_j})\}$ converges to some $\beta_0 \in [0, \infty]$ and $\{I_{g_i}(u_{k_j})\}$ converges to some $\beta_i \in (-\infty, +\infty]$.

Secondly, we shall show now that to a subsequence of $\{u_{k_j}\}$, there corresponds a generalized limit $\delta_1 \in \hat{R}$ such that $\delta_1(t)$ is a point measure a.e. in T_1 . Here T_1 denotes the purely atomic part of (T, \mathcal{T}, μ) [(a version of) the essential supremum of all atoms]. Let $T_0 \equiv T \setminus T_1$ be the nonatomic part. For $S \equiv \mathbb{R}^m$ we shall apply Theorem B to the case where (T, \mathcal{T}, μ) is replaced by $(T_0, \mathcal{T}_0, \mu_0)$. Here $T_0 \equiv T \setminus T_1$, $\mu_0 \equiv \mu|_{T_0}$. Also, we write correspondingly $\hat{L}_\infty^0, \hat{L}_1^0, \hat{R}^0$, etc. The Alexandrov compactification of $S \equiv \mathbb{R}^m$ is denoted by $\hat{\mathbb{R}}^m \equiv \mathbb{R}^m \cup \{\omega\}$. Since \mathbb{R}^m is open in $\hat{\mathbb{R}}^m$, each function $u_k|_{T_0}$ also belongs to $M(T_0; \hat{\mathbb{R}}^m)$. Hence, the mapping $t \mapsto [\text{point mass at } u_k(t)]$

defines (a version of) an element ε_{u_k} in \hat{R}^0 . By Theorem B(i) $\{u_{k_j}\}$ has a subsequence $\{u_{k_1}\}$ such that $\{\varepsilon_{u_{k_1}}\} \subset \hat{R}^0$ converges to some $\delta_0 \in \hat{R}^0$ in the topology $\sigma(\hat{L}_\infty^0, \hat{L}_1^0)$. We can split T_1 into at most countably many atoms A_j (modulo null sets this decomposition is unique). Every function u_{k_1} is equal to a constant $u_{k_1}^j \in \mathbb{R}^m$ almost everywhere on an atom A_j .

By Lemma A, applied to h , there corresponds to each atom A_j an inf-compact function $h_j : \mathbb{R}^m \rightarrow [0, +\infty]$ such that $h(t, \cdot) = h_j$ for a.e. t in A_j . [Note that the restrictions of the functions 1_{T_p} to A_j are a.e. constant zero or constant one.] By (17) we have for each A_j that $\sup_{k_1} h_j(u_{k_1}^j) \leq \beta/\mu(A_j)$, where $\beta \equiv \sup_k I_h(u_k)$. By inf-compactness of h_j , each sequence $\{u_{k_1}^j\}$ has a subsequence converging to some $u_*^j \in \mathbb{R}^m$. By an obvious diagonal extraction argument it follows that a subsequence $\{u_{k_r}\}$ of $\{u_{k_1}\}$ exists with the following properties: for every j , $\{u_{k_r}^j\}$ converges to $u_*^j \in \mathbb{R}^m$ and $\{\varepsilon_{u_{k_r}}\} \subset \hat{R}^0$ converges to $\delta_0 \in \hat{R}^0$ in $\sigma(\hat{L}_\infty^0, \hat{L}_1^0)$. Define $\delta_1 \in \hat{R}$ by $\delta_1(t) \equiv \delta_0(t)$ if $t \in T_0$, $\delta_1(t) \equiv [\text{point mass at } u_*^j]$ if $t \in A_j$. By the simple nature of the weak star topology of $L_\infty(T_1, T|T_1, \mu|T_1; M(\mathbb{R}^m))$, it is easy to check that $\{\varepsilon_{u_{k_r}}\} \subset \hat{R}$ (so with domain extended to T) converges to δ_1 in $\sigma(\hat{L}_\infty, \hat{L}_1)$.

Thirdly, we shall show that (19)-(21) hold with u_* replaced by δ_1 . Define $\hat{h} \in G^+(T; \mathbb{R}^m)$ by $\hat{h}(t, x) \equiv h(t, x)$ if $x \in \mathbb{R}^m$ and $h(t, \omega) \equiv +\infty$. [By definition of the topology on $\hat{\mathbb{R}}^m$, lower semi-continuity of $\hat{h}(t, \cdot)$ on $\hat{\mathbb{R}}^m$ is equivalent to inf-compactness of

$h(t, \cdot)$ on \mathbb{R}^m .] By Theorem B(ii) $I_{\hat{h}}(\delta_1) \leq \liminf_{k_r} I_{\hat{h}}(\varepsilon_{u_{k_r}})$
 $= \liminf_{k_r} I_h(u_{k_r}) \leq \beta < +\infty$. Hence, for a.e. t in T the point ω
 "at infinity" cannot belong to the carrier of the probability
 measure $\delta_1(t)$. By the above this implies that $I_h(\delta_1) = I_{\hat{h}}(\delta_1) \leq \beta$,
 which proves (19) with u_* replaced by δ_1 . Applying Lemma A with
 $S \equiv \hat{N} \times \mathbb{R}^m$, equipped with the sum $\rho_1 + \rho_2$ of compatible metrics
 ρ_1 on \hat{N} and ρ_2 in \mathbb{R}^m , we find that there exist a null set N ,
 sequences $\{T_p\} \subset T$ and $\{c_p\} \subset C_e(T; \hat{N} \times \mathbb{R}^m)$ such that $g_0(t, k, x) =$
 $= \sup_p 1_{T_p}(t) c_p(k, x)$ on $(T \setminus N) \times \hat{N} \times \mathbb{R}^m$.

Define $\hat{g}_q \equiv \max(\sup_{p \leq q} 1_{T_p} c_p, 0)$; since elementary functionals
 are Lipschitz-continuous, it follows that for each \hat{g}_q there exists
 $K_q > 0$ such that

$$|\hat{g}_q(t, k, x) - \hat{g}_q(t, k', x')| \leq K_q[\rho_1(k, k') + \rho_2(x, x')]$$

on $T \times \hat{N} \times \mathbb{R}^m$. Now by the monotone convergence theorem
 $I_{g_0}(k_r, u_{k_r}) = \lim_q \uparrow I_{\hat{g}_q}(k_r, u_{k_r})$ and $I_{g_0}(\infty, \delta_1) = \lim_q \uparrow I_{\hat{g}_q}(\infty, \delta_1)$,
 where the latter identity follows from the fact that $\delta_1(t)$ is not
 supported by ω for a.e. t in T . In view of this, it is enough to
 prove that $\liminf_{k_r} I_{\hat{g}_q}(k_r, u_{k_r}) \geq I_{\hat{g}_q}(\infty, \delta_1)$ for arbitrary $q \in \mathbb{N}$.
 By Lipschitz continuity of $\hat{g}_q(t, \dots)$ it follows that

$$\begin{aligned}
 I_{\hat{g}_q}(k_r, u_{k_r}) - I_{\hat{g}_q}(\infty, \delta_1) &\geq -K_q \rho_1(k_r, \infty) + I_{\hat{g}_q}(\infty, u_{k_r}) - \\
 &- I_{\hat{g}_q}(\infty, \delta_1).
 \end{aligned}$$

Since $\{\varepsilon_{u_{k_r}}\}$ is known to converge to δ_1 and since $(t, x) \rightarrow \hat{g}_q(t, \infty, x)$
 clearly belongs to $G^+(T; \mathbb{R}^m)$, it follows from Theorem B(ii) that
 (20) holds with u_* replaced by δ_1 . For every $i = 1, \dots, n$, $\varepsilon > 0$

there exists by (18) a function $f_{i,\epsilon} \in L_1$ such that $g_{i,\epsilon} \equiv g_i + \epsilon h + f_{i,\epsilon}$ is nonnegative, whence belongs to $G^+(T; \mathbb{R}^m)$. By applying Lemma A in the usual way it follows that there exist a null set N_ϵ and $\hat{g}_{i,\epsilon} \in G^+(T; \hat{\mathbb{R}}^m)$ such that $g_{i,\epsilon}(t,x) = \hat{g}_{i,\epsilon}(t,x)$ on $(T \setminus N_\epsilon) \times \mathbb{R}^m$. Define $\hat{R}(\hat{h})$ to be the set of all $\delta \in \hat{R}$ such that $I_h^-(\delta) \leq \beta$. It is elementary to prove that for every $\delta \in \hat{R}(\hat{h})$

$$\sup_{\epsilon > 0} [I_{g_{i,\epsilon}}(\delta) - \epsilon\beta - \int f_{i,\epsilon}] = I_{g_i}(\delta), \quad i = 1, \dots, n.$$

[Note that for every $\delta \in \hat{R}(\hat{h})$ the point ω is not carried by $\delta(t)$ for a.e. t in T .] By Theorem B(ii) this means that I_{g_i} is lower semicontinuous on $\hat{R}(\hat{h})$. Hence (21) holds with u_* replaced by δ_1 .

Lastly, the proof is finished by showing that there exists $u_* \in M(T; \mathbb{R}^m)$ such that

$$I_{g_0}(\omega, u_*) \leq I_{g_0}(\omega, \delta_1) \text{ and } I_{g_i}(u_*) \leq I_{g_i}(\delta_1), \quad i = 1, \dots, n.$$

No harm is done if we denote from now on $g_0(t, \omega, x)$ as $g_0(t, x)$. For $i = 0, 1, \dots, n$ we write

$$I_{g_i}^0(\delta_1) \equiv \int_{T_0} g_i(t, \delta_1(t)) \mu(dt), \text{ etc.}$$

Define $\hat{R}^0(\hat{h})$ to be the set of all $\delta \in \hat{R}^0$ such that $I_h^0(\delta) \leq \beta$.

By Theorem B(i) $\hat{R}^0(\hat{h})$ is compact in \hat{R}^0 . It is clear from the previous step that $I_{g_i}^0$ is lower semicontinuous (and affine) on $\hat{R}^0(\hat{h})$

for $i = 0, 1, \dots, n$. Hence, the set P of all $\delta \in \hat{R}^0(\hat{h})$ with $I_{g_i}^0(\delta) \leq I_{g_i}^0(\delta_1)$, $0 \leq i \leq n$, is nonempty and compact. Therefore, it contains an extreme point of δ_* by the Krein-Milman theorem. By a consequence of Carathéodory's theorem δ_* is a convex combi-

nation of at most $n + 2$ extreme points in $\hat{R}^0(\hat{h})$ [Berliocchi-Lasry (1973, Proposition II.2)]. By the same result, every extreme point of $\hat{R}^0(\hat{h})$ is the convex combination of at most two extreme points in \hat{R}^0 . By Himmelberg (1975, Theorems 5.2, 9.3) there corresponds to every extreme point δ in \hat{R}^0 a function $u \in M(T_0; \mathbb{R}^m)$ such that $\delta(t) = \varepsilon_u(t)$ a.e. in T_0 . We conclude that there exist at most $2n + 4$ coefficients $\alpha_j \geq 0$ and associated $v_j \in M(T_0; \mathbb{R}^m)$, such that $\sum \alpha_j = 1$ and $\delta = \sum \alpha_j \varepsilon_{v_j}$. Since $\delta_* \in \hat{R}^0(h)$, we also know that for a.e. t in T_0 the measure $\delta_*(t)$ is not carried by ω . Hence, all v_j can be supposed to belong to $M(T_0; \mathbb{R}^m)$. Writing temporarily $g_{n+1} \equiv h$, we find that

$$\sum \alpha_j I_{g_i}^0(v_j) = I_{g_i}^0(\delta_*) \leq I_{g_i}^0(\delta_1), \quad i = 0, 1, \dots, m+1.$$

By a well-known extension of Lyapunov's theorem there exists $v_* \in M(T_0; \mathbb{R}^m)$ with $I_{g_i}^0(\delta_*) = I_{g_i}^0(v_*)$, $i = 0, 1, \dots, m$ [Castaing-Valadier (1977, IV.17)]. Now define $u_* \in M(T; \mathbb{R}^m)$ by $u_*(t) \equiv v_*(t)$ on T_0 , $u_*(t) \equiv u_*^j$ on A_j . Then combining the above steps gives that (19)-(21) hold.

QED

Proof of the Fatou Lemma. Let us apply Proposition C to the following case. Take $n = 3m$. Define g_0 as follows. For $p \neq +\infty$ define $g_0(t, p, x) \equiv 0$ if $x \in \text{cl}_{k_j \geq p} \bigcup \{u_{k_j}(t)\}$ and $g_0(t, p, x) \equiv +\infty$ if not. For $p = +\infty$ define $g_0(t, \infty, x) \equiv 0$ if $x \in \bigcap_{p=1}^{\infty} \text{cl}_{k_j \geq p} \bigcup \{u_{k_j}(t)\}$ and $g_0(t, \infty, x) \equiv +\infty$ if not.

Measurability of g_0 follows by applying Himmelberg (1975, Theorem 6.1) and it is not hard to verify that $g_0(t, \dots)$ is lower semicontinuous on $\hat{N} \times \mathbb{R}^m$. Hence $g_0 \in G^+(T; \hat{N} \times \mathbb{R}^m)$. Define g_1, \dots, g_m by $g_i(t, x) \equiv (x^+)^i$, g_{m+1}, \dots, g_{2m} by $g_{m+i}(t, x) \equiv (x^-)^i$ and g_{2m+1}, \dots, g_{3m} by $g_{2m+i}(t, x) \equiv -(x^-)^i$. Clearly all g_i , $1 \leq i \leq 3m$, belong to $G(T; \mathbb{R}^m)$. Now by de la Vallée-Poussin's theorem [Dellacherie-Meyer (1975, II.22)] it follows from (1) that there exists a lower semicontinuous $h' : \mathbb{R}_+ \rightarrow \mathbb{R}_+$ such that

- (i) $\sup_k \int h'(|f_k^-|) d\mu < +\infty$,
- (ii) $h'(\beta) / \beta \rightarrow +\infty$ as $\beta \rightarrow +\infty$.

Define now $h(t, x) \equiv |x^+| + h'(|x^-|)$. Then (17) is valid by (2) and (i). Also, (ii) implies that (18) holds. By an application of Proposition C it follows that there exist a subsequence $\{f_{k_j}\}$ of $\{f_k\}$ and $f_* \in M(T; \mathbb{R}^m)$ such that (19)-(21) hold mutatis mutandis. Now (19) implies that f_* is integrable, (20) implies (3) and it follows from (21) that

$$\int f_*^- = \lim_{k_j} \int f_{k_j}^-, \quad \int f_*^+ \leq \liminf_{k_j} \int f_{k_j}^-.$$

A fortiori (4) follows, in view of (2).

QED

References

- Angell, T.S., 1981, Some remarks on existence of optimal controls for Mayer problems with singular components, *Annali di Matematica Pura ed Applicata* 127, 13-24.
- Artstein, Z., 1974, On a variational problem, *Journal of Mathematical Analysis and Applications* 45, 404-415.
- Artstein, Z., 1979, A note on Fatou's lemma in several dimensions, *Journal of Mathematical Economics* 6, 277-282.
- Artstein, Z., 1980, Generalized solutions to continuous-time allocation processes, *Econometrica* 48, 899-922.
- Aumann, R.J., and M. Perles, 1965, A variational problem arising in economics, *Journal of Mathematical Analysis and Applications* 11, 488-503.
- Balder, E.J., 1979, On a useful compactification for optimal control problems, *Journal of Mathematical Analysis and Applications* 72, 391-398.
- Balder, E.J., 1981a, Relaxed inf-compactness for variational problems by Hilbert cube compactification, *Journal of Mathematical Analysis and Applications* 79, 1-12.
- Balder, E.J., 1981b, Lower semicontinuity of integral functionals with nonconvex integrands by relaxation-compactification, *SIAM Journal on Control and Optimization* 19, 533-542.
- Balder, E.J., 1982, Lower closure problems with weak convergence conditions in a new perspective, *SIAM Journal on Control and Optimization* 20, 198-210.
- Balder, E.J., 1983, An existence result for optimal control problems with unbounded time domain and its application to optimal economic growth problems, *Journal of Mathematical Analysis and Applications*, to appear.
- Berliocchi, H., and J.-M. Lasry, 1973, Intégrands normales et mesures paramétrées en calcul des variations, *Bulletin de la Société Mathématique de France* 101, 129-184.
- Castaing, C., and M. Valadier, 1977, *Convex analysis and measurable multifunctions* (Springer, Berlin).
- Cesari, L., 1974a, An existence theorem without convexity conditions, *SIAM Journal on Control* 12, 319-331.

- Cesari, L., 1974b, Lower semicontinuity and lower closure theorems without seminormality conditions, *Annali di Matematica Pura ed Applicata* 98, 381-397.
- Cesari, L., and M.B. Suryanarayana, 1978, An existence theorem for Pareto problems, *Nonlinear Analysis* 2, 225-233.
- Dellacherie C., and P.-A. Meyer, (1975), *Probabilités et potentiel* (Hermann, Paris) Engl. Transl., 1979 (North-Holland, Amsterdam).
- Hildenbrand, W., 1974, *Core and equilibria of a large economy* (Princeton University Press, Princeton).
- Himmelberg, C.J., 1975, Measurable relations, *Fundamenta Mathematicae* 87, 53-72.
- Holmes, R.B., 1975, *Geometric functional analysis and its applications* (Springer, Berlin).
- Ioffe, A.D., 1977, On lower semicontinuity of integral functionals I, *SIAM Journal on Control and Optimization* 15, 521-538.
- Ionescu-Tulcea, A. and C., 1969, *Topics in the theory of lifting* (Springer, Berlin).
- Kirschner, H.P., 1976, On the risk-equivalence of two methods of randomization in statistics, *Journal of Multivariate Analysis* 6, 159-166.
- Meyer, P.-A., 1966, *Probabilités et potentiel* (Hermann, Paris).
- Nölle, G. and D. Plachky, 1967, Zur schwachen folgenkompaktheit von testfunktionen, *Zeitschrift für Wahrscheinlichkeitstheorie und Verwandte Gebiete* 8, 182-184.
- Schmeidler, D., 1970, Fatou's lemma in several dimensions, *Proceedings of the American Mathematical Society* 24, 300-306.
- Warga, J., 1972, *Optimal control of differential and functional equations* (Academic Press, New York).
- Yaari, M.E., 1964, On the existence of optimal plans in continuous-time allocation processes, *Econometrica* 32, 576-590.

SECURITY CLASSIFICATION OF THIS PAGE (When Data Entered)

REPORT DOCUMENTATION PAGE		READ INSTRUCTIONS BEFORE COMPLETING FORM
1. REPORT NUMBER #2368	2. GOVT ACCESSION NO. AD-A116 156	3. RECIPIENT'S CATALOG NUMBER
4. TITLE (and Subtitle) A Unifying Note on Fatou's Lemma in Several Dimensions		5. TYPE OF REPORT & PERIOD COVERED Summary Report - no specific reporting period
		6. PERFORMING ORG. REPORT NUMBER
7. AUTHOR(s) E. J. Balder		8. CONTRACT OR GRANT NUMBER(s) DAAG29-80-C-0041
9. PERFORMING ORGANIZATION NAME AND ADDRESS Mathematics Research Center, University of 610 Walnut Street Madison, Wisconsin 53706 Wisconsin		10. PROGRAM ELEMENT, PROJECT, TASK AREA & WORK UNIT NUMBERS Work Unit Number 1 - Applied Analysis
11. CONTROLLING OFFICE NAME AND ADDRESS U. S. Army Research Office P.O. Box 12211 Research Triangle Park, North Carolina 27709		12. REPORT DATE April 1982
		13. NUMBER OF PAGES 19
14. MONITORING AGENCY NAME & ADDRESS (if different from Controlling Office)		15. SECURITY CLASS. (of this report) UNCLASSIFIED
		15a. DECLASSIFICATION/DOWNGRADING SCHEDULE
16. DISTRIBUTION STATEMENT (of this Report) Approved for public release; distribution unlimited.		
17. DISTRIBUTION STATEMENT (of the abstract entered in Block 20, if different from Report)		
18. SUPPLEMENTARY NOTES		
19. KEY WORDS (Continue on reverse side if necessary and identify by block number) Fatou's lemma in several dimensions, variational problems arising in economics, relaxed control theory.		
20. ABSTRACT (Continue on reverse side if necessary and identify by block number) A general version of Fatou's lemma in several dimensions is presented. It generalizes the Fatou lemmas given by Schmeidler (1970), Hildenbrand (1974), Cesari-Suryanarayana (1978) and Artstein (1979). Also, it is equivalent to an abstract variational existence result that extends and generalizes results by Aumann- Perles (1965), Berliocchi-Lasry (1973), Artstein (1974) and Balder (1979) in several respects.		

DD FORM 1 JAN 73 1473

EDITION OF 1 NOV 68 IS OBSOLETE

UNCLASSIFIED

SECURITY CLASSIFICATION OF THIS PAGE (When Data Entered)

DATE
FILMED
7-8