

MICROCOPY RESOLUTION TEST CHART
NATIONAL BUREAU OF STANDARDS-1963-A

Good

LIBRARY
MISC-
Army

ADA084212

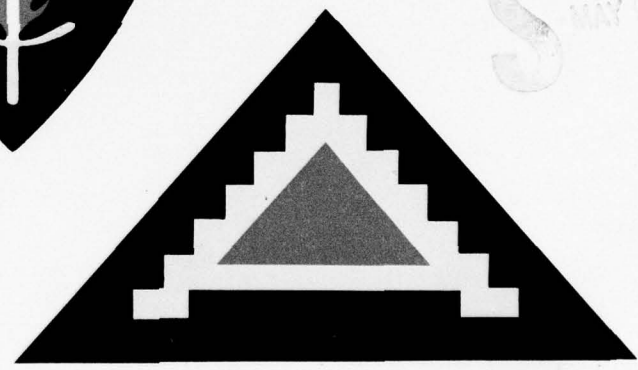
US ARMY EUROPE & 7th ARMY LEVEL

(A)

HUMERO
DIVISION NO. 4
DEC 18 1974
FT. BENNING, GEORGIA



DTIC
ELECTE
MAY 9 1980
S D



This document has been approved
for public release and sale; its
distribution is unlimited.

DOC FILE COPY

USAREUR COMMAND EDUCATION 79 10 29 315 SERVICES PLAN

August 1974



DEPARTMENT OF THE ARMY
HEADQUARTERS, UNITED STATES ARMY, EUROPE and SEVENTH ARMY
THE COMMANDER IN CHIEF
APO 09403

12 126

11

AEAGC-GED 6

21 August 1974

SUBJECT: The USAREUR Command Education Services Plan (ESP),

Commanders of USAREUR Major Commands and Assigned
Units and Activities
Heads of Staff Offices, This Headquarters

This letter expires 1 year from date of publication.

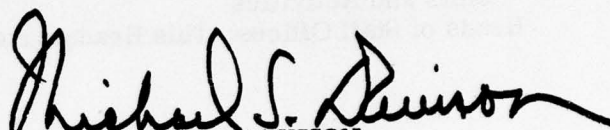
1. A major command objective for Fiscal Year 1975 (FY 75) is to provide all USAREUR personnel ample opportunity to attain the education goals in the Department of the Army Education Services Plan. In furtherance of this objective, the attached Education Services Plan provides guidance to the command and lists educational programs available through Army Education Centers.
2. Education is an integral part of individual and unit training in a complex, volunteer Army. The outstanding soldier, noncommissioned officer, officer, or civilian, is the individual who can rapidly understand written or oral orders and translate these orders into meaningful actions. The USAREUR ESP goal is to provide all personnel with the educational opportunities, during duty and nonduty hours, to strengthen individual duty performance, enhance promotion potential, and add to individual self-worth.
3. ~~Chapter one of the plan highlights the USAREUR Command Education Program, other chapters contain~~ ^{This} ESP of the USAREUR commands (action addressees) responsible for education. The United States Army, Europe, has created an educational environment that not only parallels educational opportunities available to soldiers assigned to CONUS installations but also provides special language and vocational-technical training.

405761

mt

4. Because the USAREUR ESP provides education and training programs for all service people, all USAREUR personnel should be in some type of program based on their individual needs and professional development goals. To insure that all individuals in a unit are aware of the importance of education and are fully cognizant of the opportunities available, I expect each company level commander, on his initial contact with a newly arrived NCO or soldier to apprise him or her of the local education program and to direct him or her to the unit's servicing Army Education Center.

5. In summary, commanders at all levels are reminded that educational training, like mission training, is a command responsibility. Commanders should assist their soldiers in achieving greater educational and professional growth.


 MICHAEL S. DAVISON
 General, USA
 Commander in Chief

DISTRIBUTION: D, plus
 For Action:
 100 - Cdr, V Corps
 100 - Cdr, VII Corps
 50 - Cdr, USAB
 50 - Cdr, USASETAF
 100 - Cdr, 1st Spt Bde
 25 - Cdr, NSSG (US)
 250 - DCSOPS, USAREUR (AEAGC-GED)

Accession For	
NTIS GRA&I	
DDC TAB	
Unannounced	
Justification <i>for files</i>	
By _____	
Distribution/	
Availability	
Dist	Atail and/or special
A	

USAREUR COMMAND
EDUCATION SERVICES PLAN

Table of Contents

	<u>Page</u>
I. Letter by the Commander in Chief, United States Army, Europe	i
II. Table of Contents	iii
III. <u>Chapter Number One</u> - USAREUR Command Education Services Plan	I-1
PART I	I-8
PART II	II-14
IV. <u>Chapter Number Two</u> - The Army Continuing Education and Professional Development Program (ACEPD)	11-1
V. <u>Chapter Number Three</u> - The V U.S. Corps Command Education Services Plan	111-1
PART I	111-2
PART II	111-5
VI. <u>Chapter Number Four</u> - The VII U.S. Corps Command Education Services Plan	
PART I	IV-1
PART II	IV-3
VII. <u>Chapter Number Five</u> - The 1st U.S. Support Brigade Command Education Services Plan	
PART I	V-1
PART II	V-3
VIII. <u>Chapter Number Six</u> - The U.S. Army Berlin Command Education Services Plan	VI-1
PART I	VI-2
PART II	VI-4
IX. <u>Chapter Number Seven</u> - The U.S. Army Southern European Task Force Command Education Services Plan	VII-1
PART I	VII-2
PART II	VII-4
X. <u>Chapter Number Eight</u> - The NATO/SHAPE Support Group Command Education Services Plan	VIII-1
PART I	VIII-2
PART II	VIII-5

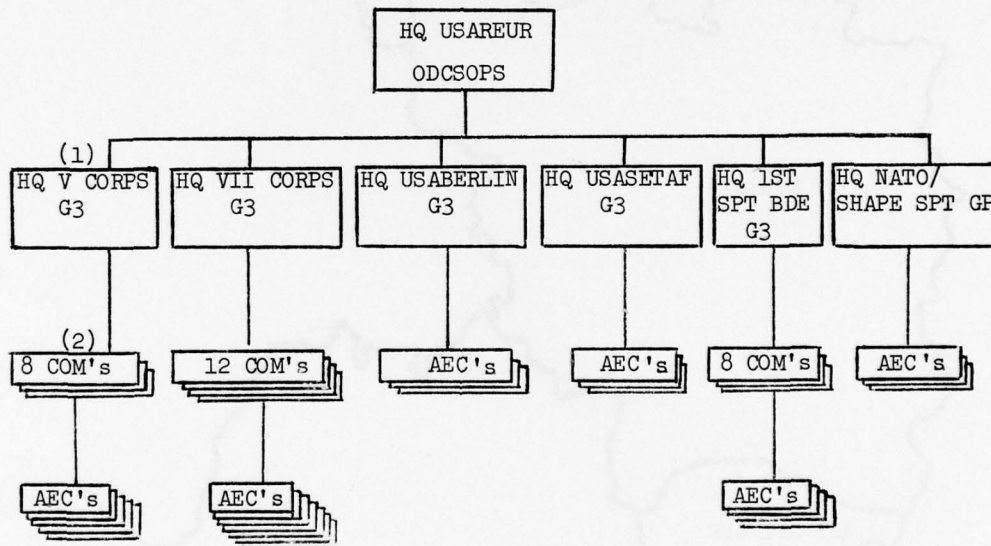
CHAPTER NUMBER ONE

USAREUR COMMAND EDUCATION

SERVICES PLAN

THE USAREUR COMMAND GED STRUCTURE

In USAREUR education is training and like mission training it is a part of the commander's responsibilities at all levels. Since 1 April 1974, the General Educational Development (GED) Program Management responsibility has resided with the Deputy Chief of Staff for Operations at USAREUR headquarters and with G3/S3's throughout the USAREUR chain of command. Commanders, through their operations officers, allocate time for the activities of soldiers. Thus it is the ultimate responsibility of unit commanders and their 3's to insure that soldiers receive education training as well as mission training. This is now being accomplished in USAREUR. Unlike a conventional military installation in CONUS, USAREUR commands stretch across an entire continent and occupy over 400 separate casernes or garrisons. The command structure for managing GED programs is as follows:



The major subordinate commands at (1) above equate to large CONUS installations such as Fort Bragg, Fort Hood, or Fort Benning. The actual management of the 113 Army Education Centers (AEC's) is executed by the local Community Commander, the senior Army officer in one of the 32 military communities (2) located in Germany or the command directors of GED located in Berlin, USASETAF and NATO/SHAPE Support Group. A sketch of this command structure follows.

NATO/SHAPE
SUPPORT GROUP
Mons

USA BERLIN

1ST SPT BDE

V CORPS

1ST SPT BDE

VII CORPS

US Army Southern
European Task Force
Vicenza, Italy

V CORPS COMMAND GED STRUCTURE (8 MILITARY COMMUNITIES)

3D ARMD DIV (FKT)

1. Frankfurt Community

IG Farben, Annex A - AEC
McNair Kas - AEC
Camp King, Oberursel - AEC
Gutleut Kas - AEC
Camp Pieri, Wiebaden - AEC
97th General Hospital - AEC
Edwards Kas - AEC

2. Hanau Community

Gelnhausen - AEC
Pioneer Kas - AEC
Fliegerhorst Kas - AEC
Hutier Kas - AEC
Coleman Kas - AEC
Armstrong Barracks - AEC

3. Darmstadt Community

Cambrail-Fritsch Kas - AEC

Ernst Ludwig Kas - AEC
Kelly Barracks - AEC
Muenster Kas/Babenhausen - AEC
Babenhausen Kas - AEC

4. Giessen Community

Butzbach, Friedberg,
Kirchgoens, Muenster(AECs)
Giessen Army Deport - AEC
Seelbach, Herborn, Arty Kas,
Handorf Rivers Barracks,
Giessen Pay Barracks,
Friedberg Schloss Kas,
Butzbach Ayers Kas,
Kirchgoens (AECs)

5. Fulda Community

Downs Barracks, Fulda
Arty Kas, Bueren
McPheeters Barracks, B.H. (AECs)

8TH INF DIV (BAD KREUZ)

6. Baumholder Community

Oberstein, Nahbollenbach,
Neubruecke, Pruem
Smith Barracks, Baumholder
Strassburg Kas, I-Ob.
Neubruecke Insti.
Pruem Mil. Post (AECs)

7. Bad Kreuznach Community

Dexheim - AEC

Bad Kreuznach - AEC
Anderson Barracks, Dexheim - AEC

8. Mainz Community

Lee Barracks, Mainz - AEC
McCully Barracks, Wackernheim
Army Air Field, Finthen - AECs

VII CORPS GED STRUCTURE (12 MILITARY COMMUNITIES)

1ST ARMD DIV (ANSBACH)

1. Ansbach Community

Katterbach - AEC
Hindenburg Kas, Ansbach - AEC
Katterbach Post - AEC
Storck Barracks, Illesheim - AEC

Nellingen Barracks, Nellingen
Kelly Barracks, Stuttgart
Echterdingen, Stuttgart
Flak Kas, Ludwigsburg
Krabbenloch Kas, Ludwigsburg
Coffey Barracks, Ludwigsburg (AECs)

2. Augsburg Community

Sheridan Kas - AEC
Reese Barracks - AEC
Gablingen Kas - AEC
Flak Kas - AEC
(New Ulm)
Wiley Barracks - AEC
Nelson Barracks - AEC
Arty Kas, Guenzburg - AEC

(Munich)
McGraw Kas - AEC

(Bad Toelz/Bad Aibling)
Flint Kas, Bad Toelz
18th USASA, Bad Aibl.

(Berchtesgaden)

(Garmisch/Oberammergau)
Sheridan Barracks, Garmisch
Hawkins Barracks, O'gau - AECs

3. Heilbronn Community

Arty Kas, Neckarsulm - AEC
Badenerhof Kas - AEC
Wharton Barracks - AEC

4. Stuttgart Community

Echterdingen, Pattonville,
Vaihingen (Patch)
Grenadier Kas, Stuttgart
Ludendorff Kas, Kornwhm
Wilkins Barracks, Kornwhm
Patch Barracks, Vaihingen
Panzer Kas, Boeblingen

5. Schwaebisch Hall Community

Crailsheim - AEC
McKee Barracks, Crailsheim-AEC
Dolan Barracks, Sch. Hall - AEC

6. Nuernberg (Fuerth) Community

Erlangen, Herzogenaurach,
Schwaebach, Zirndorf
Wm O'Darby Kas, Fuerth
Johnson Barracks, Fuerth
Nuernberg Stockade
Nuernberg Hospital
Monteith Barracks, Fuerth
Pinder Barracks, Zirndorf
Merrell Barracks, Nuernberg
O'Brien Barracks, Schwaebach
Ferris Barracks, Erlangen
Herzo Base (AECs)

7. Bamberg/Bayreuth Community

Coburg - AEC
Warner Kas, Bamberg - AEC
Christensen Barracks, Bindlach (AEC)

8. Goepingen/Schwaebisch Gmuend

Cooke Barracks, Goepingen
Bismaeck Kas, Schw Gmd (AECs)

9. 7th Army Training Center

(Grafenwoehr), Amberg, Hohen-
fels, Regensburg, Vilseck, Eild-
flecken, Grafenwoehr, Hohenfels,
Regensburg, Vilseck, Bond Bks,
Amberg Wildflecken Post (AECs)

VII CORPS (CON)

3D INF DIV (WUERZBURG)

10. Wuerzburg/Kitzingen Community

Wertheim - AEC
Leighton Barracks, Wuerzburg
Emery Barracks, Wuerzburg
Harvey Barracks, Kitzingen
Larson Barracks, Kitzingen
Peden Barracks, Wertheim (AECs)

11. Aschaffenburg Community

Jaeger Kas-AEC

12. Schweinfurt/Bad Kissingen Com.

Ledwards Barracks, Schw.- AEC
Conn Barracks, Schw.- AEC
Daley Barracks, Bad Kiss. - AEC

1ST SUPPORT BRIGADE COMMAND GED STRUCTURE (8 MILITARY COMMUNITIES)

1. Kaiserslautern/Landstuhl Community

Miesau, North Point,
Vogelweh, Weirhof
Kapaun Bks, Vogelweh
Klever Kas, K-lautern
North Point, Schoeborn
Landstuhl Med Center
Miesau Army Depot(AECs)

2. Bremerhaven Community

Bremerhaven Post - AEC
552d Arty - AEC
294th Arty Gp - AEC
Det L BSC SAFF - AEC
Cet K BSC SAFF - AEC

3. Karlsruhe Community

Gerszweski, Bks - AEC
Rheinland Kas, Ettlingen - AEC
Neureut Kas - AEC

4. Mannheim Community

Sullivan Bks, Mann - AEC
Taylor Bks, Mann. - AEC
Coleman Bks, Mann - AEC
Sandh.- AEC
Mannheim Stockade - AEC
Turley Bks, Mann - AEC
Spinelli Bks, Mann - AEC
Hammonds Bks, Mann - AEC

5. Heidelberg Community

Patton Bks, Heidelberg- AEC
USA Hospital, Heidelberg - AEC

Tompkins Bks, Schwetzingen - AEC

6. Worms Community

Taukkunen Bks - AEC

7. Pirmasens Community

Fischback, Germersheim, - AEC
Muehchweiler - AEC
Husterhoeh Kas, Pirm - AEC
Army Depot, Fischbh. - AEC
Army Depot, Germersh. - AEC

8. Zweibruecken Community

Massweiler - AEC
Kreuzberg Kas - AEC

US ARMY BERLIN COMMAND GED STRUCTURE

Berlin Brigade

HQ Berlin Brigade
McNair Barracks - AEC
Andrews Barracks - AEC
US Army Hospital - AEC
Tempelhof Avn Det - AEC
Helmstedt Det - AEC

US ARMY SOUTHERN EUROPEAN TASK FORCE COMMAND

GED STRUCTURE

SETAF (Vincenza, Italy)

Italy (less Naples),

Greece, Turkey & Ethiopia

Vincenza Post, Italy - AEC

SETAF Msl Cmd - AEC

558th Arty Gp, Athens - AEC

TUSLOG, Sinop Turkey - AEC

MAAG, Addis Ababa - AEC

Kagnew St, Asmara - AEC

Camp Darby, Livorno, Italy - AEC

Embassy Annes, Rome - AEC

NATO/AFSOUTH, Naples - AEC

NATO/SHAPE SUPPORT GROUP (US) COMMAND

Belgium/Brussels
(NATO), Belgium;
Brunssum (AFCENT),
Holland & Northern
Hessen Sites;
Burtonwood (UK) (AECs)

SHAPE HQ, Casteau
NATO HQ, Brussels
AFCENT HW, Brunssum
Army Depot Burtonwood (AECs)

PART I

USAREUR COMMAND EDUCATION NEEDS

Section A: Introduction:

The United States Army Europe (USAREUR) General Educational Development Program must be planned, programmed, structured, and executed to take care of approximately 190,000 combat, combat support and combat service support troops. This combat ready force, representing approximately one-fourth of the active United States Army troops of the Nation, is operationally oriented in the fullest and most direct sense of the word.

While largely concentrated in the Federal Republic of Germany, the USAREUR Units are spread throughout three continents of multi-varying cultures and environments. The GED activities must be geared to the peculiarities of this diverse, diffuse, complex, and operationally ready group of Army units and to the multi-faceted 190,000 soldiers, 9,000 Departments of the Army Civilians and 119,000 dependents in the Command. Unlike a fixed installation in a CONUS environment such as Fort Benning, Fort Knox or Fort Bragg where the education and needs are primarily associated with the traditional off-duty purely educational pursuits, the USAREUR Program in contrast must address a total spectrum of education/training in non-duty, on-duty and off-duty modes in a "Total Community of the Army" effort. In a stateside environment, for example, dependents can enroll in the local college or adult high school contiguous to the installation; whereas in USAREUR such a capability does not exist, thereby making it necessary for the GED Program and the Army Education Centers to endeavor to take care of its "Army Family". Further, at a CONUS installation the problem of a foreign governmental structure, a strange culture, and an unfamiliar language pose no problems. In addition, in USAREUR the very context of an installation does not fit the pattern of the isolated and poorly housed and equipped casernes spread throughout the breadth and length of three continents. To meet the USAREUR peculiar environment there is a requirement to use many of the resources (financial, personnel and time) that elsewhere in the world could be devoted to the highly visible, universally acclaimed and tradition education programs.

The USAREUR GED Program will address the full spectrum of education needs of the command, and will extend from the remedial levels on up through graduate programs. However, based on USAREUR troop accessions during FY 74 and FY 75, the greatest educational needs for the soldiers in the Command are for:

- (1) The host nation language and culture instruction to enable all of the individuals who have not previously been stationed in the Theater to have an opportunity to move more freely about in the foreign society where in they work and live.

(2) High school instruction through PREP agencies to meet the problem of over 35% of the soldiers in the Command not having high school diplomas and to provide the high school drop-out with a foundation and a basis to move not only toward a better posture for mission accomplishment and training modality, but also to give him or her the means to expand his (her) horizons for further education.

(3) English-as-a-Second Language to meet the requirement to give the 5% of the individuals in the Command the means to have English fluency to function more effectively in their unit and community.

(4) Vocational-Technical Education Programs to provide the means for reinforcing and improving MOS proficiency, technical competency, accreditation basis and achieving an associate degree for all soldiers but particularly for improving the professionalism of the NCO Corps and Warrant Officers.

(5) Counseling to pull together all of the facets of the GED Program and to insure that every individual is counseled and develops his or her own education and training program commensurate with his or her personal needs and goals and the needs and goals of his or her unit and the Army.

Section B: Listing of Education Needs by Army Management Code:

Army Management Code Number	Instructional Program Description	Total Number of Soldiers in Need of this Category of Instruction
P.871117.10000	High School Level Instruction	34,081
P.871117.20000	Vocational Instruction	102,042
P.871117.30000	College Instruction	116,932
P.871117.40000	Foreign Language Instruction	142,645
P.871117.50000	MOS-Related Instruction	143,689
P.871117.60000	General Interest Instruction	70,376
P.871117.70000	Counseling	172,810
P.871117.80000	Education Center Learning Support (Testing, MOS Library, Individual Learning Laboratory)	175,726

Section C: How Needs Were Identified:

The total of all the educational needs of USAREUR, identified in Section B above, are derived by means of the following:

(1) Compilation of all of the needs of each of the subordinate commands (Regions) which in turn came from an assessment of the needs of each of the communities under its command via the input action from each local Army Education Center in each caserne.

- (2) A review of the troop accessions into the Theater.
- (3) Evaluation of the recruiting trends in the Army.
- (4) Extrapolation and interpolation of DA Goals in the DA Education Services Plan.
- (5) Review of Education Level Surveys of the Command.
- (6) Establishment by the Commander in Chief of his own education priorities.
- (7) Review and evaluation of the interaction of unit mission and operational requirements with education requirements and offerings.
- (8) Interpolation and integration of programs with facility, equipment, organizational and geographic constraints.
- (9) Command-wide surveys.
- (10) Meetings with senior commanders and Regional G3's and General Educational Development Directors.
- (11) Input from servicing institutions and agencies; such as, the colleges and PREP organizations.
- (12) Evaluation of the specific mission of the command and its component units.
- (13) Contacts with professional organizations, groups and federal agencies; such as, Department of Labor, American Culinary Federation and Environmental Protection Agency.
- (14) Establishment of a model and supporting pilot programs for education and training - Army Continuing Education and Professional Development (ACEPD) Program.

In summary, all possible devices, channels and organizations were used to arrive at the needs. The mutual exchange and interchange of the General Educational Development activities with the unit commanders at all levels, from the lowest level (in some instances a platoon or isolated detachment) up through the major commands such as the Corps on into and including Headquarters, USAREUR. The needs and resulting programs represent the upward and downward channel of communication and assessment to meet on a common ground of "providing ample opportunity for USAREUR personnel to attain the education goals of the DA Educational Services Plan".

Section D: Unique Command Education Needs/Challenges in USAREUR:

The uniqueness of the educational needs and special requirements of USAREUR rest with the very nature of the Command; namely, it is in foreign territory, highly dispersed throughout three continents and is the fighting force that is directly devoted to fulfilling immediate and on-going operational commitments. This organization is an Army in the field. It is this very fact that places the needs for educational services in a highly differing perspective from those of the static, fixed, limited-in-operation CONUS installation.

The entire chain of Command, as well as the operational and training doctrine, necessarily places heavy emphasis on decentralization. The traditional concept of Base Operations Support that holds for CONUS does not completely parallel that type of support in USAREUR. The combat chain of command is the basic structure; yet support in USAREUR activities such as those of GED must be configured in some measure with a type of base support structure through the community commander that does not in all aspects coincide with the command chain. This means that in most instances an Army Education Center will be servicing units from many commands, necessitating that the local GED personnel work with the varying operational segments of the many units that are within these geographic areas.

The diverse types of combat, combat support and combat service support units in USAREUR have not only varying missions, but also varying degrees of access to training areas (due to the urban nature of the countries in which USAREUR troop units are stationed). All of these units have a "readiness" mission which requires instantaneous response to practice alerts as well as real threats to NATO and United States interests such as the October - November 1973 Arab-Israeli conflict or the July-August 1974 Cyprus conflict. This "readiness" mission along with the command's emphasis on decentralized training requires great emphasis on the imaginative integration of education and training along with unconventional approaches to instruction.

The stationing of US troops in a foreign environment impose a particularly unique requirement on the General Educational Development Program in that the Army Education Centers are tasked to conduct host nation language and acculturation programs for all personnel who have not been in-country on a previous tour. This vital need to meet essentially ninety percent of the incoming troops, as well as the special language programs of Gateway, insures that the commander has soldiers and, to some degree (on space available) their dependents, who are better able not only to function operationally with companion nation units but also allows for the soldier and his family to move away from the isolation of the caserne and the American housing areas into the environment of the host countries.

The very nature of the foreign environment also places special demands on the GED system with regard to dependents. In CONUS installations the dependents can avail themselves of the on-going programs of colleges, adult high schools and specialized training institutions that are co-located on a post or in close proximity to the installation. In USAREUR this is not the case, and, insofar as possible, the education programs, on a space available basis, are provided for dependents and DAC's. In point of fact, the Army Education Center must attempt to become a true community service to all of the United States citizens living in a foreign geographic area.

The problems associated with a foreign environment are also translated into special requirements such as the NATO Status of Forces Agreement wherein only certain institutions that are approved by the Government of the Federal Republic of Germany can conduct instructional programs in Germany. Only a limited number of such institutions are allowed to perform their educational functions for the GED program. Further, programs that may be acceptable in Belgium or Italy, for example, may well not be acceptable in Germany. In addition, this type of situation requires screening of individuals who are or are not logistically supported by the Department of the Army.

Another type of special requirement for USAREUR rests with the fact that many Army Education Centers may well be tasked to support Air Force or Navy personnel and in some instances the other services support Army personnel. While not insurmountable this situation poses problems up and down the educational system that require special effort and programs and diversion of resources in order to solve them.

A very special educational challenge in USAREUR that tends to structure and in some cases limits the educational programs is the lack of in many, many casernes appropriate facilities. Being in a foreign environment places demands on all of the facilities in a given caserne that generally necessitates the educational program being conducted in a limited or even marginal physical set-up. All contractual instructional service, for example, must be conducted in military facilities, that is, troop training classrooms, (which are minimal and below marginal in many instances), or through the shared use of US Dependent Education System European Area (USDESEA) classrooms. This facility problem is further compounded by the extreme dispersion of troops and small size of units and the supporting Army Education Centers and Subcenters. Attempts being made to establish learning centers are in many instances met with lack of ability to supply dedicated space for this type of educational activity. A further peculiarity of the facilities situation in USAREUR is that all of the multi-media and other type of supporting equipments must be re-worked or especially ordered to accomodate the 220-volt 50-cycle electrical system in Europe.

A unique situation and a highly positive one for the education program in USAREUR has been the establishment of the monitorship of the GED program by the Deputy Chief of Staff for Operations and the G3/S3 staff elements in the chain of command. This unique organizational arrangement is one that provides for a highly integrated, coordinated effort. It provides for education being training and training being education. It has assisted in establishing a model Army Continuing Education and Professional Development (ACEPD). This configuration rightly causes additional demands on the MOS instruction and the types of Education Programs that complement, supplement and are integrated with the mission and "training" activities. These programs also bring about the need to work more directly with organizations and agencies outside of the DOD establishment.

The special requirements, needs, and challenges of the USAREUR General Educational Development Program placed into perspective and quantified in this Education Services Plan point to the necessity of all echelons beyond USAREUR of fully supporting the program both with funds and personnel. The funds shortage for FY 75 will be \$4,511,000 and the personnel shortage will be 40 Education Services Officers. If the GED Program is to support fully the USAREUR mission and DA Goals and is to function effectively and efficiently these designated shortages must be alleviated.

PART II USAREUR

COMMAND EDUCATION PROGRAM

SECTION A - PROGRAM DESCRIPTIONS

SUBSECTION 1. GENERAL:

The General Educational Development Program is designed to give every soldier in USAREUR ample opportunity to participate in the education program so that he may learn in order that he can better himself professionally by reinforcing his own military skills and at the same time achieve self-satisfaction in attaining some of his own personal educational goals. The GED program provides for a complete spectrum of educational opportunity from remedial activities on up through graduate, collegiate endeavors. By being under the operation and training staff monitorship, at all levels, the education program is fully integrated with and mutually supportive of, mission and in concert with both the individual training and unit efforts. The design of the USAREUR GED Program centers about this training/education complementary, supplementary, integrated role. Units in the command designate on their training schedules Prime Training Time - Mission and Prime Training Time - Education. The GED Programs described in the subsequent sections are in general available at the majority of the 165 Army Education Centers and subcenters in USAREUR. Some variations in the basic programs will be found dependent on the missions and locations of the units and the constraints of the specific situation at given casernes.

SUBSECTION 2. GED SERVICES AVAILABLE:

The General Education Program in other sections of this USAREUR Education Services Plan are specifically delineated by .1 through .8 budget codes in the 871117 program. For the subsection of program offerings, however, in order to present a more concise and general overview of what is available, a broad break-out falling into the major categories of counseling, instruction and testing is presented:

a. Counseling Services. Military personnel and the GED activities will recognize counseling as a fundamental and key essential of the program. The addition of 167 professional DAC counselor spaces for all Education Centers at the GS 7 and GS 9 levels will assist in providing the basic structure for the counseling service. The soldiers will be assisted in having their interests, needs, accomplishments, aptitudes, skills and career goals identified, assessed and programmed so that they will be able to fit in with the unit activities, goals and mission as well as those of the Department of the Army. The counseling program will be established so that all incoming personnel will be counseled. It is

planned that preliminary counseling, with appropriate permanent record initiation, will be provided at when the soldiers arrive at the 21st Replacement Center in USAREUR. This counseling will include filling out DA Form 669, explanation of the services available, some testing and the directing of the soldier to his counselor at the Army Education Center which will service his unit where he is to be assigned. Upon arrival at his unit the preliminary counseling and record activity will be expanded and the programs available at the given sites will be integrated into the individuals career and professional program. Whenever the soldier leaves his unit he will check out at the Army Education Center with his counselor to insure that the records are complete and all of the actions necessary for the continuation of his program as his next unit are in order. The counseling program is designed to be a positive, active one and a continuing process and not merely talking to the person if he or she has chosen to walk-in the door of the Army Education Center. The counselors will maintain the approach of being actively interested in each of his or her clients.

b. Instructional Services.

(1) Pre High School. Remedial Reading for those personnel identified as being below 5th Grade level by the (UAT II) and English-as-a-Second Language for all personnel who are foreign decent soldiers from non-English speaking background who have been identified as being deficient in English language skills.

(2) PREP. (Pre-discharge Education Program) High School Completion. PREP has been designated as being conducted at least 50% on duty time. This Program (funded by VA with no loss of VA benefits for individuals on AD for more than 180 days) is to be in a high priority resting just behind the Remedial Reading and English-as-a-Second Language and the Host Language Head Start Programs. Big Bend Community College and United States Dependents Schools, European Area (USDESEA) will conduct the high school diploma programs with the major post high school PREP effort being by the University of Maryland. The direction of effort is to achieve high school diplomas and not merely participation in the program. All levels of command have been made aware of the fact that the completion of high school is basic to their mission efforts and foundation to the entry of the individual with most military training programs and educational programs. Learning Centers are being established in connection with PREP.

(3) Post High School PREP. A review of English and mathematics for those military who have completed high school and wish a refresher before enrolling in college, will be conducted primarily by University of Maryland. VA funds the program for military on AD for more than 180 days without loss of VA educational entitlement. Some expansion into other subject areas will be explored.

(4) Language. USAREUR has the largest and most comprehensive Foreign Language instruction program in the Army and the only mandatory commander-directed language programs in the Army. The nature of these programs is as follows:

(a) Commander-Directed, On-Duty, Mission-Oriented and Job Connected Training (62% of the total language program).

(b) Voluntary Participation, Off-Duty, Training (38%) - 8 Years Ago, this was 99% of the total.

(c) Language Laboratory group and individual instruction, in support of the Commander-Directed and voluntary participation programs.

The objectives and priorities of USAREUR Language Programs are:

(a) The attainment of a proficiency level. Primarily the elementary and the limited working levels, as defined in DLI directives, in the host-nation languages, other key languages in demand by commanders or individuals, and English-as-a-Second Language.

(b) Achievement of the Department of the Army minimum quarterly participation rates, i.e., meeting or exceeding the 10% rate for officers and 2% for enlisted personnel.

(c) Responsiveness to CINCUSAREUR General Educational Development Program Priorities. Organizing instructional resources to meet these priorities. English-as-a-Second Language for Non-English speaking soldiers and host-nation orientation programs have top priority.

The language programs will involve:

(a) Host Nation Head Start of 30 hours of language and 10 hours of culture; about 50,000 persons a year will be involved in this program.

(b) Gateway to German, French and Italian for military and civilian personnel who are identified by commanders as requiring elementary level proficiency to work with their foreign counter parts. This program has 3 successive 30 hour blocks and builds on Head Start. Language programs are conducted at 99 Army Education Centers, 53 Subcenters, and 46 Language Laboratories located in Belgium, Holland, England, West Germany, Berlin, Italy, Greece, Turkey, and Ethiopia. These programs fall into two categories; commander-directed and voluntary.

In the Commander-Directed category the principal programs are as follows:

(a) Host-Nation Orientations Called Head Start. These are 40 hour blocks of instruction in which 10 hours are devoted to an orientation to the host-nation's language and its customs and 30 hours to an introduction to its language. This is currently being done for German, French, Italian, and Dutch and is designed for all incoming personnel who have not had a

recent tour in the host nation (about 50,000 soldiers a year fall in this category).

(b) Gateway to German, French, and Italian. These programs, for the time being, are made up of 3 successive 30-hour blocks of classroom/laboratory instruction. They are for military and civilian personnel occupying positions identified by commanders as requiring the elementary level of proficiency as described in the joint service regulation titled "Management of the Defense Language Program". These programs are extensions of the Head Start Orientation. In FY 75 and FY 76, six additional 30-hour blocks of instruction will be prepared. The goal here will be limited working proficiency in all 4 communication skills (understanding, speaking, reading, and writing).

(c) "Around-the-Clock" Programs. These are 21-day "Immersion" efforts. Included are 160 hours of intensive classroom/laboratory work.

(d) Military Terminology for Border Guards, Military Policemen and Customs Policemen are specialized 40 hour extension of the 120 hour ALM Course. These courses will be conducted as required by the commanders of special categories of personnel.

(e) Intensive- non specialized programs of 120-160 hours using ALM materials and/or adaptations conducted on 4 to 8 hours a day, 5 days a week for selected military and civilian personnel.

(f) Voluntary participation programs either ALM materials or "Gateway" materials for military and civilian personnel and their adult dependents.

(5) Military Occupational Specialty (MOS) and MOS-Related Courses. MOS and MOS-related courses are conducted in response to unit and mission requirements. These comprise a wide range of courses designed to increase ones knowledge and understanding of his MOS. Included are such courses as: Effective Writing; Effective Reading; Typing; Data Processing; Automotive Mechanics; Methods of Instruction; Military Correspondence; electronics; etc.

(6) Correspondence Study. Correspondence courses are available without cost in numerous military and non-military subjects from the following Department of Defense extension schools: Department of the Army Extension Courses; all branches; Department of the Air Force Extension Course Institute; Department of the Navy, Scotia, New York and NAVFAC; and Marine Course Institute. Correspondence courses from civilian colleges and universities are available.

(7) College Programs - Undergraduate (to include Vocational-Technical Education). Courses are offered by accredited schools; credit is transferable; Department of the Army pays 75% of tuition costs.

Two-Year College Programs, Associate of Arts Degree, and/or Special
Certificates (Voc-Tech Programs):

CENTRAL TEXAS COLLEGE* (CTC) Hotel/Motel Management
Law Enforcement
Automotive Technology
Electronics
Real Estate/Insurance
Welding
Carpentry
Radio/TV Repair

CITY COLLEGES OF CHICAGO*
(CCC) Data Processing
Real Estate
Office Skills

EMBRY-RIDDLE AERONAUTICAL
UNIVERSITY Aeronautical Sciences

UNIVERSITY OF MARYLAND Certificates in Vocational and Industrial
Management and Law Enforcement

*SERVICEMEN'S OPPORTUNITY
COLLEGES (SOC) CTC and CCC are members of a network of
colleges and universities pledged to
improve post high school opportunities
for military personnel. SOC are geared
to the mobility and variety of the military
environment. To assist military personnel
in pursuing their endeavors, colleges and
schools belonging to SOC have liberal
admissions policies; flexible and liberal
residency requirements; maximum credit for
educational experiences obtained in the
Armed Forces; and policies which offer a
contract for a degree, designate an
advisor, permit transfer (a reverse
transfer) of credits earned subsequently
at other schools, and serve as a repository
for all academic records, in addition to
awarding the appropriate certificate or
degree.

(8) College Programs - Graduate. Master's Degree Programs, funded through VA.

BOSTON UNIVERSITY

Business Administration
Counseling
Engineering Management
International Relations
Secondary Education

UNIVERSITY OF OKLAHOMA

Economics
Human Relations
Public Administration

UNIVERSITY OF SOUTHERN
CALIFORNIA

Education
International Relations
Systems Management

UNIVERSITY OF UTAH

Business Administration
Industrial Relations

A complete listing of civilian institutions providing programs in USAREUR by location and field of study is set forth in sub-section 3 below.

c. Testing Services. The following testing services to be available at Army Education Centers in USAREUR:

ACHIEVEMENT TESTS

To determine grade-level placement pre-high school.

HIGH SCHOOL GENERAL EDUCATIONAL DEVELOPMENT TEST
(HIGH SCHOOL GED)

To determine high school equivalency.

COLLEGE LEVEL EXAMINATION PROGRAM (CLEP)

A battery of five examinations (English, Social Science, Natural Science, Humanities and Math). Six semester hours of college credit to be earned for successful completion of each test for a total of 30 semester hours (1 year college completion).

TESTING SERVICES

A full range of testing activities are available through Army Education Centers. Included are diagnostic achievement and vocational interests and aptitude tests.

**SUBJECT STANDARDIZED TESTS
(SST)**

These tests enable a student to challenge the subject matter in a given college level discipline. Successful completions of SSTs may result in the award of three semester hours of college credit per examination.

QUALIFICATION EXAMINATIONS

USAREUR Army Education Centers provide assistance to personnel interested in the various examinations associated with qualification for undergraduate or graduate college study, such as the American College Test (ACT), Scholastic Achievement Test (SAT), Graduate Record Examination (GRE), the examinations for graduate study in business, education, medicine, law and others. These examinations are administered periodically at various AECs in USAREUR.

**MILITARY OCCUPATIONAL
SPECIALTY (MOS) LIBRARIES**

USAREUR AECs maintain libraries of Field Manuals, Training Manuals, Circulars, and other documents related to the MOSs of the units served. These libraries are available to military personnel for general reference and for study in preparation for testing on primary and secondary MOSs.

NOTE: Dependents of military personnel participate in GED programs on a space available basis. The language and undergraduate programs are especially well attended by dependents.

SUB - SECTION 3 - CONTRACTUAL EDUCATION SERVICES PROGRAM

A. GRADUATE (MASTER'S DEGREE) PROGRAM

1. V Corps Region

SCHOOL	LOCATION	FIELD OF STUDY
Boston University	Frankfurt, Annex A	Business Administration
Boston University	Frankfurt, Annex A	Engineering Management
Boston University	Frankfurt, Annex A	Counseling
Boston University	Hanau, Pioneer	Business Administration
Boston University	Fulda*	Business Administration
Boston University	Bad Kreuznach	Business Administration
Boston University	Baumholder	Business Administration
University of Southern California	Frankfurt, Annex A	Education
University of Southern California	Frankfurt, Annex A	International Relations
University of Southern California	Hanau, Pioneer	Education
University of Southern California	Bad Kreuznach	Education
University of Southern California	Baumholder	Education

2. VII Corps Region

Boston University	Aschaffenburg	Business Administration
-------------------	---------------	-------------------------

2. VII Corps Region (cont)

SCHOOL	LOCATION	FIELD OF STUDY
Boston University	Aschaffenburg	Counseling
Boston University	Ansbach	Business Administration
Boston University	Bad Kissingen	Business Administration
Boston University	Bad Kissingen	Counseling
Boston University	Vilseck	Education
Boston University	Vilseck	Guidance & Counseling
Boston University	Wildflecken	Business Administration
Boston University	Schweinfurt	Education
Boston University	Bamberg	Business Administration
Boston University	Grafenwoehr	Business Administration
Boston University	Munich	Secondary Education
Boston University	Augsburg	Secondary Education
Boston University	Stuttgart, Grenadier	Secondary Education
Boston University	Stuttgart, Grenadier	Counseling
University of Southern California	Wuerzburg	Education
University of Southern California	Fuerth, W.O. Darby	Education
University of Southern California	Munich	International Relations

2. VII Corps Region (cont)

SCHOOL	LOCATION	FIELD OF STUDY
University of Southern California	Augsburg	International Relations
University of Southern California	Stuttgart, Grenadier	International Relations
University of Southern California	Goeppingen, Cooke	International Relations
University of Southern California	Stuttgart, Grenadier	Systems Management
University of Oklahoma	Nuernberg, Monteith	Public Administration
University of Oklahoma	Nuernberg, Pinder	Public Administration
University of Utah	Munich	Business Administration
University of Utah	Augsburg	Business Administration
University of Utah	Stuttgart, Patch	Business Administration
University of Utah	Heilbronn, Wharton	Business Administration

3. Berlin Brigade

SCHOOL	LOCATION	FIELD OF STUDY
Boston University	Berlin, McNair	International Relations
Boston University	Berlin McNair	Business Administration

4. NATO/SHAPE Region

SCHOOL	LOCATION	FIELD OF STUDY
Boston University	Casteau, Shape	International Relations

4. NATO/SHAPE Region (cont)

SCHOOL	LOCATION	FIELD OF STUDY
Boston University	Brussels	International Relations
University of Southern California	Casteau, Shape	Education
University of Southern California	Brussels	Education
University of Southern California	Brunssum, AFCENT	Education
University of Southern California	Casteau, Shape	Systems Management
University of Southern California	Brussels	Systems Management
University of Oklahoma	Brunssum, AFCENT	Public Administration

5. SETAF Region

Boston University	Vicenza	International Relations
Boston University	Livorno	Business Administration
Boston University	Naples	Secondary Education
Boston University	Naples	International Relations

6. 1st Support Brigade Region

Boston University	Pirmasens	Education
Boston University	Mannheim, Sullivan	Business Administration
Boston University	Mannheim, Sullivan	Secondary Education

6. 1st Support Brigade Region (cont)

SCHOOL	LOCATION	FIELD OF STUDY
Boston University	Heidelberg, Patton	Secondary Education
Boston University	Heidelberg, Patton	International Relations
Boston University	Karlsruhe, Smiley	Secondary Education
Boston University	Karlsruhe, Smiley	Counseling
Boston University	Karlsruhe, Gerszewski	Engineering Management
University of Southern California	Heidelberg, Patton	Systems Management
University of Southern California	Mannheim, Sullivan	Systems Management
University of Southern California	Worms	Systems Management
University of Southern California	Kaiserslautern, Vogelweh	Education
University of Southern California	Kaiserslautern, Vogelweh	Systems Management
University of Southern California	Zweibruecken	Systems Management
OPEN	Bremerhaven	Business Administration
OPEN	Bremerhaven	Education (Counseling)
B. UNDERGRADUATE PROGRAMS (Less Vocational-Technical)		
University of Maryland	All	General Studies**

C. VOCATIONAL-TECHNICAL PROGRAMS***

1. V Corps Region

SCHOOL	LOCATION	FIELD OF STUDY
City Colleges of Chicago	Frankfurt, Annex A	Data Processing
City Colleges of Chicago	Frankfurt, Annex A	Real Estate
City Colleges of Chicago	Darmstadt, Cambrai-Fritsch	Data Processing
Central Texas College	Frankfurt, Annex A	Hotel/Motel Management
Central Texas College	Frankfurt, Annex A	Law Enforcement
Central Texas College	Frankfurt, 97th USAGH	Real Estate/Insurance
Central Texas College	Frankfurt, 97th USAGH	Medical Technology
Central Texas College	Hanau, Pioneer	Law Enforcement
Central Texas College	Hanau, Pioneer	Hotel/Motel Management
Central Texas College	Hanau*, Pioneer	Electronics
Central Texas College	Hanau, Fliegerhorst	Automotive Technology
Central Texas College	Hanau*, Pioneer	Real Estate/Insurance
Central Texas College	Hanau*, Pioneer	Medical Technology
Central Texas College	Fulda, Downs	Law Enforcement
Central Texas College	Fulda*, Downs	Hotel/Motel Management
Central Texas College	Fulda*, Downs	Real Estate/Insurance
Central Texas College	Kirchgoens, Ayers	Automotive Technology
Central Texas College	Kirchgoens*, Ayers	Law Enforcement
Central Texas College	Kirchgoens*, Ayers	Real Estate/Insurance
Central Texas College	Giessen	Law Enforcement
Central Texas College	Giessen*	Real Estate/Insurance

1. V Corps Region (cont)

SCHOOL	LOCATION	FIELD OF STUDY
Central Texas College	Giessen*	Air Conditioning & Refrigeration
Central Texas College	Wiesbaden, Camp Pieri	Law Enforcement
Central Texas College	Friedberg, Ray	Law Enforcement
Central Texas College	Friedberg, Ray	Real Estate/Insurance
Central Texas College	Darmstadt, Cambrai-Fritsch	Law Enforcement
Central Texas College	Darmstadt*, Cambrai-Fritsch	Hotel/Motel Management
Central Texas College	Darmstadt*, Cambrai-Fritsch	Real Estate/Insurance
Central Texas College	Hanau, Pioneer	Welding
Central Texas College	Hanau*, Pioneer	Carpentry
Central Texas College	Hanau*, Pioneer	Radio & TV Repair
Central Texas College	Frankfurt, McNair	Real Estate/Insurance
Central Texas College	Gelnhausen	Law Enforcement
Central Texas College	Gelnhausen*	Real Estate/Insurance
Central Texas College	Buedingen	Real Estate/Insurance
Central Texas College	Buedingen*	Law Enforcement
Central Texas College	Bad Hersfeld	Law Enforcement
Central Texas College	Bad Hersfeld	Real Estate/Insurance
Embry Riddle Aeronautical University	Hanau, Fliegerhorst	Aeronautical Science
Embry Riddle Aeronautical University	Finthen	Aeronautical Science

1. V Corps Region (cont)

SCHOOL	LOCATION	FIELD OF STUDY
Central Texas College	Bad Kreuznach	Automotive Mechanics
Central Texas College	Bad Kreuznach	Law Enforcement
Central Texas College	Bad Kreuznach	Brake Service
Central Texas College	Bad Kreuznach	Transmission Repair
Central Texas College	Bad Kreuznach	Carpentry
Central Texas College	Bad Kreuznach	Welding
Embry Riddle Aeronautical University	Finthen	Aeronautical Science
Central Texas College	Mainz	Automotive Mechanics
Central Texas College	Mainz	Welding
Central Texas College	Mainz	Law Enforcement
Central Texas College	Baumholder	Law Enforcement
Central Texas College	Idar-Oberstein	Automotive Technology
Central Texas College	Neubruেকে	Automotive Technology
Central Texas College	Baumholder	Automotive Mechanics
Central Texas College	Baumholder	Electronics

2. VII Corps Region

City Colleges of Chicago	Augsburg	Data Processing
City Colleges of Chicago	Augsburg	Mid-Management
City Colleges of Chicago	Augsburg	Real Estate
City Colleges of Chicago	Neu-Ulm	Real Estate
City Colleges of Chicago	Neu-Ulm	Data Processing

2. VII Corps Region

SCHOOL	LOCATION	FIELD OF STUDY
Central Texas College	Aschaffenburg	Open
Central Texas College	Vilseck	Open
Central Texas College	Schweinfurt	Open
Central Texas College	Wuerzburg	Open
Central Texas College	Bamberg	Open
Central Texas College	Kitzingen	Open
Central Texas College	Nuernberg, Merrell	Open
Central Texas College	Schwabach	Open
Central Texas College	Nuernberg, Monteith	Open
Central Texas College	Fuerth, W.O. Darby	Open
Central Texas College	Erlangen	Open
Central Texas College	Grafenwoehr	Open
Embry Riddle Aeronautical University	Kitzingen	Aeronautical Science
Embry Riddle Aeronautical	Illesheim	Aeronautical Science
City Colleges of Chicago	Stuttgart, Patch	Data Processing
City Colleges of Chicago	Stuttgart, Patch	Real Estate
Central Texas College	Stuttgart, Ludendorf*	Hotel/Motel Management
Central Texas College	Stuttgart, Ludendorf	Law Enforcement
Central Texas College	Ludwigsburg, Flak	Electronics
Central Texas College	Stuttgart, Grenadier	Real Estate/Insurance
Embry-Riddle Aeronautical University	Schwaebisch Hall*	Aeronautical Science

3. Berlin Region

SCHOOL	LOCATION	FIELD OF STUDY
Central Texas College	Berlin, McNair	Law Enforcement
Central Texas College	Berlin, Andrews*	Hotel/Motel Management

4. NATO/SHAPE Region

City Colleges of Chicago	Casteau, Shape	Data Processing
City Colleges of Chicago	Brussels	Data Processing
City Colleges of Chicago	Brunssum, AFCENT	Data Processing
City Colleges of Chicago	Casteau, Shape	Real Estate
City Colleges of Chicago	Brussels	Real Estate
City Colleges of Chicago	Brunssum, AFCENT	Real Estate
City Colleges of Chicago	Brunssum, AFCENT*	Mid-Management
City Colleges of Chicago	Rotterdam*	Mid-Management

5. 1st Support Region

Embry Riddle Aeronautical University	Mannheim, Coleman*	Aeronautical Science
Central Texas College	Mannheim, Sullivan	Electronics
Central Texas College	Karlsruhe, Gerszewski	Hotel/Motel Management
Central Texas College	Karlsruhe, Gerszewski	Law Enforcement
Central Texas College	Heidelberg, Patton	Hotel/Motel Management
Central Texas College	Heidelberg, Patton	Law Enforcement
City Colleges of Chicago	Heidelberg, Patton	Data Processing
City Colleges of Chicago	Heidelberg, Patton*	Real Estate

5. 1st Support Region (cont)

SCHOOL	LOCATION	FIELD OF STUDY
City Colleges of Chicago	Mannheim, Sullivan*	Real Estate
Central Texas College	Worms	Law Enforcement
Central Texas College	Worms	Automotive Mechanics
Central Texas College	Worms	Air Conditioning & Refrigeration
Central Texas College	Worms	Drafting
City Colleges of Chicago	Worms	Data Processing
Central Texas College	Kaiserslautern, Vogelweh	Air Conditioning & Refrigeration
Central Texas College	Kaiserslautern, Vogelweh	Radio-TV Repair
Central Texas College	Miesau	Electronics
Central Texas College	Landstuhl	Medical Technology
Central Texas College	Kaiserslautern, Kleber	Data Processing
Central Texas College	Kaiserslautern, Kleber	Electronics
City Colleges of Chicago	Zweibruecken	Computer Programming
Central Texas College	Zweibruecken	Dental Tech
Central Texas College	Zweibruecken	Automotive Body
Central Texas College	Zweibruecken	Forestry
Central Texas College	Pirmasens	Photo Journalism
Central Texas College	Pirmasens	Automotive Repair
Central Texas College	Pirmasens	Electronics/Radio-TV
Central Texas College	Pirmasens	X-Ray Technician

5. 1st Support Region

<u>SCHOOL</u>	<u>LOCATION</u>	<u>FIELD OF STUDY</u>
Central Texas College	Fischbach	Law Enforcement
Central Texas College	Fischbach	Welding
Central Texas College	Germersheim	Automotive Mechanics
Central Texas College	Germersheim	Rough Carpentry
Central Texas College	Pruem	Electronics
University of Maryland	Bremerhaven	Business Management
University of Maryland	Bremerhaven	Law Enforcement

FOOTNOTES:

* New Program.

** Includes newspaper course "Energies of America - The Dream and Reality" (subject to review of first newspaper course currently being conducted).

***Contingent upon availability of funds and facilities which can be used for workshop areas.

USAREUR

SECTION B. PRIORITIES AND ENROLLEMT RATES FOR MILITARY PERSONNEL

<u>Code</u>	<u>Priority</u>	<u>No. in Category</u>	<u>Av. Qtrly Enrollment</u>	<u>Schedule</u>
1. HS PREP	3d	No. Non-HS Graduates	8899	(Minimum) 50% Duty
Remedial Reading	1st <u>1</u>	All below 5th Level	1952	Duty
2. Voc Tech	4th 1st	All above HS Complet.	4129	Duty Non-Duty
3. College -Undergrad	5th	All above HS Complet	8990	Duty (When Classes are not in conflict with mission require- ments)
-Graduate	2d (Non- duty)	All above Bach. Degree	2218	Non-duty
4. Foreign Lang Eng. as a 2d Lang	1st <u>2</u>	All whose basic Lang not Eng.	1469	Duty
Headstart	2d	All newly arrived in Host Country	14293	Duty
Host Nation	6th 3d	(Command Determined)	5864	Duty Non-duty
5. MOS-Related Instruction	4th	All above HS Complet.	9160	Duty
6. General Instruction	N/A	(Command Determined)	1164	Duty

<u>Code</u>	<u>Priority</u>	<u>No. in Category</u>	<u>Av. Qtrly Enrollment</u>	<u>Schedule</u>
7. Counseling	n/a	All upon Assign. in USAREUR	48,771	Duty
8. -Testing	n/a	Determined by outcome of .1-.7	23,106	Duty
-MOS Lib	n/a	Determined by outcome of .1-.7	22,136	Duty
-Lang Lab	n/a	Determined by outcome of .1-.7	4,646	Duty

1 1st priority for individuals with English reading deficiency.

2 1st priority for individuals whose basic language is not English.

CHAPTER NUMBER TWO

THE ARMY CONTINUING EDUCATION AND
PROFESSIONAL DEVELOPMENT PROGRAM (ACEPD)

USAREUR'S

ARMY CONTINUING EDUCATION AND PROFESSIONAL DEVELOPMENT (ACEPD) PROGRAM

The USAREUR Army Continuing Education and Professional Development (ACEPD) Program is a model training and education concept which will be followed by commanders at all levels when implementing their command Education Services Plans (ESPs). This model serves as a guide to commanders in the allocation of their most precious resource -- TIME, and assists them in satisfying individual soldier needs for professional development while achieving mission requirements.

The ability of any unit to perform its mission rests with the ability of each individual in that unit to perform effectively. This individual performance is based on training, experience and education. To bring about the most logical development of the individual and the use of his skills at the appropriate level requires an integrating, complementing and supplementing of these elements of training, experience and education.

Military success depends in a large measure, in this type of a setting, on the goal congruence of the military organization with those of the individuals who make up that unit.

If the individual in the unit sees his goals (objectives) are not in conflict with those of the unit and the unit is able to have its goals (objectives) in tune with the individual's aspirations, then mission accomplishment has a positive assurance of being attained. Therefore, a program to insure this goal congruence *within the education/training framework* is required. Such a program of continuing education and professional development within the Army would have for its purpose the providing for an educational-vocational para professional system which will satisfy the needs of the professional volunteer Army and at the same time increase the individual's career opportunities, enhance his job satisfaction and document his achievements. This program will enable the unit to have more broadly and soundly trained individuals who will be prepared to meet the units requirements and concurrently attain the education credentials necessary to compete with both his/her military and civilian contemporaries.

The Certification and Associate Degree Program for USAREUR Foodservice personnel will serve as the pilot for this concept. Certification will be provided by the American Culinary Federation Inc., through the Association of Military Chefs, Europe located at HQ, USAREUR and Seventh Army.

Army Training and experience will be recognized for certification. Supplementary and complementary education and training will be provided, on and off duty, by colleges in USAREUR. Individuals will qualify for certification and advancement consistent with their achievements. The attained military skill level translates to civilian positions through certification and is accepted by industry.

Such a program can be schematically depicted as in Table 1 for a Combat Arms MOS and Table 2 for a Technical/Administrative MOS. This schematic, while greatly simplified presents a model for achieving these goals. The two left-hand columns represent the "military training" aspects and the two right-hand columns represent the "Education-Academic" aspects of the program. Both sides of this dual ladder point to a reinforcing and supplementing each other, so that at any point in time the individual can be appropriately certified and accredited by the proper professional organizations and societies, both in the military and in his civilian life when he leaves the service.

The idea in this model is to have the individual move up his career ladder with MOS training and promotion and at the same time have other education opportunities to fit in with this upward mobility aiding him and aiding the unit. At each level there will be "something" education-wise and training-wise for every one.

This career program requires some considerations by commanders and training officers which are listed at Table 3. A possible schedule situation is also shown on Table 3.

ACEPD CAREER LADDER

MIL TNG	MOS'S & GRADES	ACADEMIC TNG		SKILL LEVEL SECOND MOS	ACCREDI- TATION
		ON DUTY	OFF DUTY		
11-20 yrs SGM acad	00Z-CSM 11G50 E9-SGM 11G50 E8-1ST SGT		Grad	Mech Maint Supv	Svc Mgr
5-10 yrs NCOES Adv	11B40 E7-Plt SGT E6-Sqd Ldr E5-Ammo Sec Ldr	MOS Crs Lan Headst	BA AA Corres MOS Crs	Wheel Veh Mech Autmv Rpmn	Gen Auto- mobil Mech
2-4 yrs	11B20 E4-Sr Rifleman	Prov Dev	Credit For Sch	Spec Sys Rpmn	Mech (Spec1)
1-2 yrs	11B10 E1-E3 Lt Wpn Inf	Rem		Mech Maint Helper	Appr
BCT					

Table 1

ACEPD CAREER LADDER

MIL TNG	MOS'S & GRADE	ACADEMIC TNG			CERTIFICATION	
		ON DUTY	OFF DUTY			
			AA	BA	GRAD	
SGM Academy	Food Adv Food Svc Supv 941A (W0) 94Z50 94F50 (E7-E9)		Ass Degree Appl Science			Master Chef
NCOES Advance	Dining Fac Mgr Food Svc Steward 94B40 94F40 (E6-E7)	MOS Crs Lang Headst	MOS Crs Corres			Executive Chef
NCOES Basic	First Cook Cook 94B20 94F20 (E4-E6)	Cert Prov	Undergrad			Working Chef (Prof Cook)
AIT	Cook's Helper Baker's Helper Meat Cutter's Helper 94A10 (E1-E3)	Dev Rem	Crs for Sch			Appr Culinarian
BCT						

Table 2

BASIC CONSIDERATION FOR ACEPD PROGRAM

SCHEDULING

COUNSELING

DOCUMENTATION/CERTIFICATION

MANAGEMENT SYSTEM

ORGANIZATION STABILITY

PERSONNEL SYSTEM

FUNDS

BASIC CONSIDERATIONS FOR IMPLEMENTING A PROGRAM

Scheduling - Prototype

ON DUTY

AM - Mission Training
Maintenance Activities

Certificate and Academic
Credit

LUNCH

PM - Professional Development
Sports/PT

PREP
MOS
Language

EVENING MEAL

OFF DUTY

Reinforce and Continue Professional Development

Associate of Arts Degree
Evening PREP
Language

BA/Graduate
Certification

Table 3

CHAPTER NUMBER THREE

THE V U.S. CORPS COMMAND

EDUCATION SERVICES PLAN

DEPARTMENT OF THE ARMY
Headquarters V Corps
APO 09079

AETVGC-T

SUBJECT: The Education Services Plan

16 AUG 1974

Commander-in-Chief
United States Army, Europe and Seventh Army
ATTN: DCSOPS GED Div
APO 09403

1. The V Corps Regional Education Services Plan represents a conscientious effort to plan and implement a broad and varied educational program for all military and civilian personnel stationed within V Corps boundaries.
2. The educational objectives contained in the plan are designed to meet the needs of both the individual and the Army. It is my desire that Commanders at all levels fully support the education program and recognize that educational services are tools of the command in developing the best possible leadership, management, and communication capabilities and in the attainment of high morale.
3. I have full intention of supporting this program and I will be keenly interested in the progress made toward the attainment of the goal congruent objectives and the development of a functional interface between education and training.

William R. Desobry
WILLIAM R. DESOBRY
LTG, USA
Commanding

Telephone: FKT (2311-) 5713

PART I

V CORPS COMMAND EDUCATION NEEDS

SECTION A. INTRODUCTION - 1. The V Corps Region is a geographical area of 12,000 square miles composed of varied environs divided into eight military communities. Community individual differences and diversified requirements are evident in the community ESPs. V Corps Region in the educational context contains thirty-three Army Education Centers and nine sub-centers with a military population of approximately sixty-two thousand. The eastern portion contains the Third Armored Division and supporting troop units. The Eighth Infantry Division and supporting elements is located in the western sector. The following Profile characterizes the troop complexion and provides a reasonable percentage break-out of the types of soldiers who needs have been considered. Military duties are characterized by extensive and frequent maneuvers and training which takes men away from their "home installations" for periods up to thirty days or more duration.

<u>Community</u>	<u>Approx Troop Population</u>	<u>% of Combat Troops</u>	<u>% of Combat Support Troops</u>	<u>% of Combat Service Support Troops</u>
Bad Kreuznach	3,900	15	80	5
Baumholder	9,300	78	11	11
Mainz	4,200	95	3	2
Hanau	12,500	50	25	25
Frankfurt	11,200	5	85	15
Giessen	10,800	20	65	15
Fulda	4,100	70	15	10
Darmstadt	6,000	40	35	25

2. Although it may be too early to prognosticate, there appears to be an ever increasing need for vocational-technical certification and AA programs and emphasis will be placed on this program in equal priority to high school completions. Of course, the mandatory Head-start German Orientation Program will be fully funded and monitored very closely.

3. A closer study of each community will be achieved by conducting a thorough and more detailed analysis of each community and installation ESP. This will be accomplished as soon as time permits and will result in a closer and more valid identification of soldier needs, problem areas and available programs.

SECTION B. LISTING OF EDUCATION NEEDS BY ARMY MANAGEMENT CODE

<u>Army Management Code Number</u>	<u>Instructional Program Description</u>	<u>Total # of Soldiers in need of this Category of Instruction</u>
P.871117.10000	High School Level Instruction	11,544
P.871117.20000	Vocational Instruction	27,177
P.871117.30000	College Instruction	18,666
P.871117.40000	Foreign Language Instruction	33,872
P.871117.50000	MOS-Related Instruction	39,255
P.871117.60000	General Interest Instruction	9,992
P.871117.70000	Counseling	45,723
P.871117.80000	Education Center Learning Support (Testing, MOS Library, Individual Learning Laboratory)	48,496

SECTION C. 1. The needs for each community were identified by using the following methods:

- a. Analysis of quarterly education level survey (PQRS) provided by community ARPACs.
- b. Personal discussions with battalion and unit commanders.
- c. Individual counseling sessions between professional counselors and soldiers.
- d. Utilization of MOS density lists available in MOS libraries.
- e. Maximum use of local interest surveys.
- f. Unit surveys requested of commanders and/or unit administrative personnel.
- g. Community military participation in "Education Information Fairs" at which military personnel are thoroughly appraised of all educational programs available in the community and provided an opportunity to express their desires and needs. GED and contractual school counseling personnel are available at the information fair.

h. Feeder data provided by a screening of AEC 669 current files.

i. Group orientations with time provided for individuals to make their desired and needs known.

2. When all of these techniques are employed and cross-referenced, it is possible to reach a reliable estimate of community educational needs.

SECTION D. 1. Special needs vary from community to community but in the final analysis the V Corps Region requires a broad based and diversified program to meet the needs of all personnel. A very special need easily identified for all communities (except Baumholder) is the need for facilities which can have a dedicated utilization for vocational-technical courses in the hard skills. Until this need is met, V Corps Region programs will fall short of meeting the vocational-technical needs of large numbers of enlistees in the all-Vounteer Army.

2. The geographical location and minimum troops available in isolated ADA units will make it difficult, if not impossible to provide such isolated units with viable education programs. There is a need for transporting men from these units to the nearest Army Education Centers for many programs which require a minimum of 10 to 20 enrollees under AR 621-5 and contractual college requirements. Testing programs and correspondence schools programs can be increased by the appointment of more military as TCOs and troop diversion programs to place qualified EM in established Army Education Centers. This would provide more time for civilian education advisors and counselors to visit the sites to provide guidance and technical assistance.

3. It is recognized that the above remarks may be more related to the category of problem areas but, until they are resolved, the ability of V Corps Region advisors to provide all encompassing programs for all military personnel will be limited.

PART II V CORPS COMMAND

EDUCATION PROGRAM

SECTION A - PROGRAM DESCRIPTION

<u>Program</u>	<u>Narrative Description</u>	<u>Projected Term Schedules</u>
I. High School PREP	Big Bend Community College & USDESEA PREP provide instruction in basic and intermediate skills. Courses offered include Remedial Reading, Basic Math, Consumer Math, Elementary Algebra, English Usage, Effective Writing, U.S. History, Social Problems, Physical Science, Government.	To be determined by the individual AEC & communities in coordination with units' Master Training Schedule.
College PREP	Non-credit courses in English & Math are offered by Univ of Maryland and Big Bend Community to those students in need of refresher courses to prepare for college entrance.	" "
II. Vocational Programs	Central Texas College, Embry-Riddle Aeronautical Univ, & City Colleges of Chicago, offer courses in the vocational-technical area which provide competency certificate, proficiency certificate and Associate Degrees in Applied Sciences. Embry-Riddle Aeronautical Univ in addition to offering Associate Arts Degrees also offers Bachelor Arts Degrees in Aviation Management, Aviation Maintenance.	" "
III. College Instruction		
A. Undergraduate	The University of Maryland	Term one- 26 Aug

<u>Program</u>	<u>Narrative Description</u>	<u>Projected Term Schedules</u>
	offers a variety of programs leading to Bachelor of Arts or Bachelor of Science degrees and additionally Associate of Arts and one year certification in Business Management & Law Enforcement, at 15 different locations within this region.	to 18 Oct 74. Term two- 28 Oct to 20 Dec 74. Term three- 20 Jan 75 to 14 Mar 75. Term four- 31 Mar 75 to 23 May 75. Term five: 2 Jun to 25 Jul 75.
B. Graduate Program	Boston University offers Master of Science in Business Administration Counseling, English Management at 4 locations. University of Southern California offers graduate programs in ED & Inter Relations at 6 locations. The University of Utah is scheduled to offer a MS in Human Resources at Giessen by Oct.	To be determined by the individual AEC & communities in coordination with units' Master Training Schedule.
IV. Foreign Language		
A. Host Nation Language	<u>Headstart</u> -an introductory 40 hour one week group, study offered at Education Centers throughout the Corps Region for all newly arrived military personnel from E-1 to E-3. Courses at most centers start each week and are Command directed. <u>Gateway</u> -a 30 hour, 5 to 6 week non-credit course in German with concentration on speaking & understanding. Three levels I thru III, are offered.	" "
B. Spanish & French	Non-Credit courses offered	" "

<u>Program</u>	<u>Narrative Description</u>	<u>Projected Term Schedules</u>
	at various centers throughout the year.	
C. English as a 2d Language (ESL)	Three phase program with each phase consisting of 120 hours of instruction. Course is designed for the soldiers who do not speak English or read English at an acceptable level. Courses are offered throughout the Corps Region and are Command directed.	To be determined by the individual AEC & Communities in coordination with units' Master Training Schedule.
V. MOS- Related Instruction	Courses are offered at most centers in typing and military correspondence, GT Improvements, Methods of Instruction classes and specific MOS classes to assist the soldier in achieving higher scored on his MOS Proficiency Test.	" "
VI. General Interest Instruction	These are courses offered at various centers as the demand or interest justifies. Such courses as Black History are offered at various locations. Courses in Stocks & Bonds, Risk & Insurance, First Aid, English for Foreign Born, mainly for dependents.	" "
VII. Correspondence Study	Education Centers in V Corps Region provide two types of correspondence programs, (a) Military Correspondence courses from the 27 service schools which are MOS related. These courses are processed thru the MOS library. (b) Correspondence	" "

<u>Program</u>	<u>Narrative Description</u>	<u>Projected Term Schedules</u>
	courses from numerous colleges and universities. These courses are not associated with the former USAFI PC&U courses.	To be determined by the individual AEC & communities in coordination with units' Master Training Schedules.
VIII. Testing	The V Corps Region has 35 accredited testing centers administering up to 26 different types of tests.	" "

V CORPS

SECTION B - PRIORITIES AND ENROLLMENT RATES FOR MILITARY PERSONNEL

<u>CODE</u>	<u>PRIORITY</u>	<u>NO. IN CATEGORY</u>	<u>AV. QTR ENROLL</u>	<u>SCHEDULE</u>
.1 Remed Reading	1st <u>1</u>	1,162	364	Duty
HS PREP	3rd	7,175	2,030	(Minimum) 50% Duty
.2 Vo-Tech	4th 1st	27,177	1,179	Duty Non-duty
.3 .3 College Undergrad	5th	16,328	2,196	Duty (When classes are not in con- flict with mission requirements)
Grad	2d (non- duty)	2,338	464	Non-duty
.4 Foreign Lang Eng. as a 2d Lang	1st <u>2</u>	1,374	234	Duty
Headstart	2d	23,211	3,558	Duty
Host Nation Lang Tng	6th 3rd	9,287	1,043	Duty Non-duty
.5 MOS-Rel Instr	4th	39,255	1,516	Duty
.6 Gen Instr		9,992	260	Duty/Non-duty
.7 Counseling	N/A	45,723	10,656	Duty

SECTION B (continued)

<u>CODE</u>	<u>PRIORITY</u>	<u>NO. IN CATEGORY</u>	<u>AV. QTR ENROLL</u>	<u>SCHEDULE</u>
.8				
Testing	N/A	18,773	5,035	Duty
MOS Lib		23,100	4,717	
Lang Lab			247	

1 1st priority for individuals with English reading deficiency.

2 1st priority for individuals whose basic language is not English.

V CORPS

SECTION C - QUARTERLY PARTICIPATION RATES

PROGRAM CODE		1st Qtr		2nd Qtr		3rd Qtr		4th Qtr	
		#Participation		#Participation		#Participation		#Participation	
		Mil	Civ	Mil	Civ	Mil	Civ	Mil	Civ
1.	Remedial Reading	405	31	449	29	363	39	371	25
HS	PREP	1,909	117	2,114	143	2,140	147	1,956	96
2.	Vo-Tech	868	72	1,126	85	1,313	95	1,413	117
3.	College Undergrad	2,077	382	2,152	389	2,224	376	2,271	447
	Graduate	406	130	438	138	464	136	438	126
4.	Foreign Lang								
	Eng as a 2d Lang	218	26	200	19	241	25	215	18
	Headstart	3,543	118	3,506	118	3,397	103	3,387	109
	Host Nation Lang Tng	1,059	552	1,109	545	1,041	451	963	398
5.	MOS-Rel Instr	1,567	64	1,501	54	1,481	56	1,515	50
6.	Gen Instr	245	40	245	40	285	40	265	35
7.	Counseling	14,202	933	16,012	915	14,719	880	14,935	803
8.	Testing	3,196	305	5,985	328	5,932	312	5,843	323
	MOS Lib	4,248	20	4,528	20	4,283	15	4,574	10
	Lang Lab	230	160	230	160	339	160	188	130

V CORPS

SECTION D - CORPS CONSOLIDATION OF COMMUNITIES - PROJECTED ENROLLMENTS (ANNUAL)

	BKR		BHR		DMT		FKT		FDA	
	MIL	CIV	MIL	CIV	MIL	CIV	MIL	CIV	MIL	CIV
1. Rem Read	135	7	329	47	147	8	38	20	116	8
HS PREP	530	50	1,577	215	860	36	1,080	80	719	68
2. Vo-Tech	290	8	1,701	166	93	18	310	130	255	19
3. College										
Undergrad	410	18	1,669	171	840	80	1,120	980	770	50
Graduate	180	10	402	54	52	8	680	395	125	4
4. Forg Lang										
ESL	80	8	122	26	45	0	64	32	64	14
Headstart	950	40	3,082	144	1,901	168	1,080	88	660	0
Host Nation	370	100	579	116	793	147	610	1,121	152	92
5. MOS-Rel	190	20	621	38	2,593	0	528	146	485	0
6. Gen Instr	0	0	0	0	0	0	220	135	0	0
7. Counseling	2,150	90	11,535	919	1,916	590	4,145	980	3,068	120
8. Testing	850	50	6,465	225	1,916	161	2,180	436	830	40
MOS Lib	800	0	1,233	0	6,763	0	950	65	1,025	0
Lang Lab	0	0	438	80	184	0	365	530	0	0

V CORPS

SECTION D (continued)

	MIL GSN		HNU		MNZ		TOTAL CORPS	
	MIL	CIV	MIL	CIV	MIL	CIV	MIL	CIV
1. Rem Read	348	34	225	0	117	0	1,455	124
HS PREP	1,247	30	1,506	13	600	11	8,119	503
2. Vo-Tech	570	0	1,073	49	455	0	4,717	390
3. College								
Undergrad	1,110	155	1,503	108	1,362	0	8,784	1,562
Graduate	188	49	154	31	75	0	1,856	551
4. Forg Lang								
ESL	285	24	228	2	48	0	936	106
Headstart	2,160	0	3,600	8	800	0	14,233	448
Host Nation	526	143	542	228	600	0	4,172	1,947
5. MOS-Rel	825	12	447	0	375	8	6,064	224
6. Gen Inst	0	0	700	25	120	0	1,040	160
7. Counseling	5,420	538	11,985	259	2,405	40	42,624	3,536
8. Testing	3,945	126	2,680	193	1,275	23	20,141	1,254
MOS Lib	4,260	0	3,660	0	175	0	18,866	65
Lang Lab	0	0	0	0	0	0	987	610



81 AUG 1974

ACT-300-7

SUBJECT: VII Corps FY 75 Education Services Plan (ESP) (PDS) (REF: 330)

Commander-in-Chief
United States Army
ATTN: ASAG-ED
APO 9605

CHAPTER NUMBER FOUR

THE VII U.S. CORPS COMMAND

EDUCATION SERVICES PLAN

1. Letter, ASAG-ED, dated 10 July 74, subject: Forward for Command FY 75-76 Education Services Plan (ESP) (REF: ASAG-330).

2. Letter, ASAG-ED, dated 10 July 74, subject: Letter of Instruction Number One Hundred and Forty-Five - Education (LIFE) (REF: ASAG-330).

3. A coordinated program of military training and academic education is key to the success of a professional volunteer Army. I believe the VII Corps Education Service Plan sets forth the guidance for education programs designed to complement Army traditions and best provide the soldier with the opportunity for continuing education and professional growth.

4. The professional capability and quality of today's modern Army depends on the technical knowledge and skill of our military personnel as well as their capacity to assume and fulfill responsible positions of leadership. Education is a major means to achieve this end.

5. The Education Services Plan for VII Corps will receive strong support at every level of this command. Interest and support of the educational needs of VII Corps soldiers has always been of foremost concern and will continue to receive our closest attention.

John E. Richardson
Lieutenant General, USA
Commanding General



DEPARTMENT OF THE ARMY
HEADQUARTERS, VII CORPS
APO 09107

AETSGC-T

21 AUG 1974

SUBJECT: VII Corps FY 75 Education Services Plan (ESP) (RCS: AEAGC-336)

Commander-in-Chief
United States Army, Europe & Seventh Army
ATTN: AEAGC-GED
APO 09403

1. References:


a. Letter, AEAGC-GED, HQ, USAREUR & Seventh Army, dtd 26 Jul 74,
Subject: Format for Command FY 75-76 Education Services Plan (ESP)
(RCS: AEAGC-336).

b. Letter, AEAGC, HQ, USAREUR & Seventh Army, dtd 11 Apr 74, Subject:
Letter of Instruction Number One Hundred and Forty-Five - Peacetime
Mission: Reorganization of USAREUR General Educational Development (GED)
Program.

2. A coordinated program of military training and academic education is key to the success of a professional volunteer Army. I believe the VII Corps Education Services Plan sets forth the guidance for education programs designed to complement Army missions and best provides the soldier with the opportunity for continuing education and professional growth.

3. The professional capability and quality of today's modern Army depends on the technical knowledge and skill of our military personnel as well as their capacity to assume and fulfill responsible positions of leadership. Education is a major means to achieve this end.

4. The Education Services Plan for VII Corps will receive strong support at every level of this command. Awareness and support of the educational needs of VII Corps soldiers has always been of foremost concern and will continue to receive our closest attention.


GEORGE S. BLANCHARD
Lieutenant General, USA
Commanding

PART I

VII CORPS COMMAND EDUCATION NEEDS

SECTION A. INTRODUCTION - The objective of VII Corps' Education Services Plan for FY 75 is to provide the opportunity and means to attain the Modern Volunteer Army's educational goal of developing the professional and educational capability of all personnel to the maximum potential. The wide range of programs and courses described in this plan are offered to enable every military and eligible adult civilian to strive toward and achieve his individual educational and professional career goal in the unique setting of an overseas command.

The Corps plan is designed to meet the broad educational needs of sixteen progressive military communities serviced by fifty-six Army education centers and twenty-four sub-centers which are dispersed throughout a geographic area encompassing over one-third of USAREUR's West German area of responsibility. As a broad overview, the military population consists primarily of combat ready and combat service support units as well as other organizations providing varied logistic services to the military communities. Combined, these elements total a troop population of over 82,000 and an adult civilian population of over 60,000.

The scope of the current education programs is being constantly broadened to meet the expressed needs of each Community. A complete spectrum of education programs and affiliated services has been instituted within the Corps area from pre-high school remedial reading to graduate college level courses.

Academic and vocational counseling, coupled with appropriate diagnostic testing, is being stressed throughout the Corps area in order to identify the individual educational needs of the newly arrived soldiers. Assistance and advisement are offered in the development and improvement of MOS skills in preparation for MOS Evaluation Testing. Additionally, extensive MOS reference libraries containing AR's, SR's, TM's, FM's, and other related military publications are available at Army Education Centers.

One of the programs which will receive special emphasis this year is the vocational-technical program which has been greatly expanded to enable our specialists, NCO's, and warrant officers to obtain certificates and associate degrees in specific technical fields. The importance of these job and skill related programs cannot be over-emphasized and participation by our personnel, both during duty and non-duty hours, is strongly stressed. The high school level programs, especially the diploma and completion programs as well as the various remedial courses, will continue to receive major emphasis. In addition to these programs, increased opportunities have also been made available through the expansion of various university programs for those who wish to pursue undergraduate and graduate collegiate studies.

The professional capability and quality of today's modern Army depend on the technical knowledge and skill of our personnel as well as their capacity to assume and fulfill responsible positions of leadership. Education is a major means to achieve these ends.

We recognize that the success of the Modern Volunteer Army depends, to a great degree, on achieving an equitable balance between lower priority mission requirements and a reasonable response to the legitimate aspirations of our soldiers for personal development. Commanders at all levels will provide and support a comprehensive educational program integrated with other elements of their mission.

SECTION B. LISTING OF EDUCATION NEEDS BY ARMY MANAGEMENT CODE:

<u>Army Management Code Number</u>	<u>Instructional Program Description</u>	<u>Total # of Soldiers in need of this Category of Instruction</u>
P.871117.10000	High School Level Instruction	15,793
P.871117.20000	Vocational Instruction	46,694
P.871117.30000	College Instruction	55,386
P.871117.40000	Foreign Language Instruction	66,107
P.871117.50000	MOS Related Instruction	64,751
P.871117.60000	General Interest Instruction	46,215
P.871117.70000	Counseling	74,778
P.871117.80000	Education Center Learning Support (Testing, MOS Library, Individual Learning Laboratory)	73,063

SECTION C. DATA SOURCES - The primary sources of data used in the determination of education needs and in projecting class schedules were Education Level Surveys, Personnel Qualification Rosters, unit personnel rosters, interest surveys conducted by community commanders and education centers, individual interviews and counseling sessions, individual education records (DA Form 669), and past education requirements.

SECTION D. SPECIAL NEEDS - American Language Training for L.N. employees, plus typing classes for American dependent hire clerical personnel. Additionally, Vocational-Technical Courses for adult dependent personnel (i.e., nurses, training, dental technicians, lab technicians) are required.

PART II VII CORPS COMMAND

EDUCATION PROGRAM

SECTION A - PROGRAM DESCRIPTION

<u>Program</u>	<u>Narrative Description</u>	<u>Projected Courses Per Quarter*</u>	
I. High School Instruction			
A. USDESEA HS-PREP	USDESEA-PREP offers a comprehensive course of study leading to a high school diploma and also specialized remedial work. USDESEA-PREP is accredited by the North Central Association of American Colleges and Secondary Schools and awards an official high school diploma to personnel who satisfy program requirements. Specific courses are programmed in Communicative Arts, English, Social Science, History, Science and Math. USDESEA-PREP is VA funded and is monitored by GED.	1st 2nd 3rd 4th TOTAL	340 308 402 348 1,398
B. College PREP University of Maryland	The University of Maryland PREP English and PREP Math, non-credit courses provide selected students special preparation before undertaking university courses in English and Math. This program is funded by VA. Courses will be offered both on and off duty.	1st 2nd 3rd 4th TOTAL	18 23 27 23 91

* Rather than project term schedules the number of courses projected for each quarter are listed.

<u>Program</u>	<u>Narrative Description</u>	<u>Projected Courses Per Quarter</u>	
Big Bend Community College	Big Bend Community College post-high school, college-PREP instruction in English, Math and testing skills are planned for Echterdingen, Stuttgart Air Field.	1st	3
		2nd	2
		3rd	2
		4th	3
		TOTAL	10
II. Vocational Programs	Vocational courses are provided by Central Texas College, City Colleges of Chicago and Embry Riddle Aeronautical University.		
Central Texas College	Central Texas College is a fully accredited SOC college that offers vocational-technical courses in law enforcement, electronics/communication, automotive mechanics, office mgmt., military mgmt., hospital mgmt., leading to an associate of Applied Science degree. Competency and Proficiency certificates are awarded for one semester and one year of course work respectively. Normally, 5 terms, 8 weeks in length will be offered; however, out-of-phase courses can also be provided to fit unit training schedules.	<u>SEMESTER</u>	
		1st	44
		2nd	58
		3rd	74
		4th	58
		TOTAL	234
		<u>Term I</u>	
		26 Aug-18 Oct	74
		<u>Term II</u>	
		28 Oct-20 Dec	74
		<u>Term III</u>	
		20 Jan-14 Mar	75
		<u>Term IV</u>	
		31 Mar-23 May	75
		<u>Term V</u>	
		02 Jun-25 Jul	75
City Colleges of Chicago	City Colleges of Chicago is a fully accredited college that will offer courses in general studies, Data Processing, Real Estate, Law Enforcement, Mid-Management and Computer programming that lead to an associate. Courses are normally run on a 5 term, 8 week schedule.	1st	21
		2nd	21
		3rd	39
		4th	18
		TOTAL	99

<u>Program</u>	<u>Narrative Description</u>	<u>Projected Courses Per Quarter</u>	
Embry Riddle Aeronautical University	Embry Riddle Aeronautical University is accredited by the Southern Association of Colleges and Schools, and provides a program of Aeronautical studies for individuals interested in a career in aviation. This program essentially parallels the first two years for the B.S. degree in Aeronautical Studies.	1st 2nd 3rd 4th TOTAL	7 8 11 10 36
III. College Instruction	College courses are offered in the VII Corps area by the University of Maryland, Boston University, University of Southern California, and the University of Utah. The University of Oklahoma has been approached regarding offering graduate level courses in Public Administration.		
A. Associate Programs	The University of Maryland also awards an AA degree in Liberal Arts. Projected courses are included in item III., Baccalaureate Programs.		
B. Baccalaureate Programs	The University of Maryland is a four year Serviceman's Opportunity College that offers Liberal Arts courses leading to a B.A. or a B.S. degree. Normally, courses are given during 5 terms, 8 weeks in length, primarily off-duty; however, there is flexibility to enable scheduling out-of-phase classes for tactical units involved in Military exercises.	1st 2nd 3rd 4th TOTAL	164 165 214 130 673

<u>Program</u>	<u>Narrative Description</u>	<u>Projected Courses Per Quarter</u>
C. Graduate Instruction	The Boston University Graduate School conducts a program leading to the Master of Science in Business Administration and Masters in Education (with emphasis in elementary, secondary education and human resources). Courses are offered during 2 winter semesters and 1 summer semester.	1st 26 2nd 17 3rd 26 4th 23 TOTAL 93
University of Southern California	The University of Southern California conducts a program leading to Masters of Science in Education and Masters in International Relations. There are five, 8 week terms planned for FY 75.	1st 15 2nd 10 3rd 15 4th 10 TOTAL 50
University of Utah	The University of Utah offers preparatory and graduate courses leading to the Masters in Business Administration Degree (MBA).	1st 7 2nd 6 3rd 10 4th 4 TOTAL 27
University of	Projected graduate programs for FY 75 include the University of Oklahoma's advanced program in Public Administration that allows extensive independent study and research combined with formal course work. A survey is currently being conducted to determine program potential.	1st 0 2nd 3 3rd 0 4th 4 TOTAL 7

<u>Program</u>	<u>Narrative Description</u>	<u>Projected Courses Per Quarter</u>	
IV. Foreign Language Instruction			
A. English as a Second Language	These courses are for personnel whose native tongue is other than English who experience difficulty speaking and understanding English. Participants are selected on the basis of ALCPT results. DLI materials are used in the English as a Second Language Program.	1st 2nd 3rd 4th TOTAL	17 28 33 32 110
B. Headstart	Headstart is an introductory course to German life, culture and language. Approximately one half of this 40 hour course is devoted to familiarization with the German Language and the remaining time is used to teach history, customs and use of public transportation and facilities. A tour to some area of interest in the vicinity is included in each course.	1st 2nd 3rd 4th TOTAL	298 275 277 256 1,106
C. Gateway to German	A 30 hour course in Conversational German Language for officers and senior NCO's down to the Battalion level as prescribed by the VII Corps Commander. Gateway places more stress on German Language and less emphasis on host nation culture that does Headstart. Individuals who have completed German language courses or who demonstrate competency by test are exempt from participation.	1st 2nd 3rd 4th TOTAL	48 54 66 64 232

<u>Program</u>	<u>Narrative Description</u>	<u>Projected Courses Per Quarter</u>	
D. ALM German Volunteer	These are 40 hour German Language courses usually held in evenings for military personnel and authorized American civilian personnel and their dependents. ALM courses are offered on 3 levels, Phase 1, 11, and 111.	1st 2nd 3rd 4th TOTAL	80 84 97 82 343
E. Other	German for Military Police, German Military Intelligence, German for Prisoners and English for German Police is also planned in VII Corps during FY 75. Additionally, language labs are maintained in many centers. Figures on projected courses are included under ALM above.		
V. MOS Related Instruction	The following courses are designed to provide instruction to enable personnel to upgrade their MOS proficiency and career opportunity in Armed Forces. All projected MOS type courses are included in the figures at right.	1st 2nd 3rd 4th TOTAL	61 67 70 59 257
A. Military Career and Typing	Courses are designed to train personnel in type-writing and correct procedure used in military correspondence.		
B. Shorthand	Courses are offered for military and civilian personnel to provide instruction in basic shorthand.		

<u>Program</u>	<u>Narrative Description</u>	<u>Projected Courses Per Quarter</u>	
C. MOS Test Preparation	These courses are designed to assist personnel in preparation for proficiency testing in specific MOS series.		
D. TAMMS	These courses provide instruction to assist military personnel with military equipment maintenance and operation records.		
E. PLL	These courses provide instruction in prescribed load list for supply clerks.		
F. Data Processing	Courses in basic data processing and advanced computer science techniques for military personnel.		
G. Defense Driving	These courses for military and civilian personnel on techniques of defensive driving.		
H. ACB Review	These courses assist military personnel in preparation for retesting on the Army Classification Battery (GT) by providing instruction in basic math problem solving, vocabulary, spatial relationships, mechanic principles and testing procedure.		
VI. General Interest Instruction	General interest courses are grouped together in this consolidated VII Corps Education Services Plan. Specific course data can be obtained from community ESP's. Race/Human Relations, typing/clerical Practice for Dependents, NAF and Budget Management are included as general interest courses.	1st 2nd 3rd 4th TOTAL	35 36 47 36 154

<u>Program</u>	<u>Narrative Description</u>	<u>Projected Courses Per Quarter</u>
VII. Correspondence Study	Information, counseling, and registration assistance are provided for personnel interested in correspondence study with various Army Service Schools and colleges and universities.	Individuals and groups are enrolled in correspondence courses on an as required basis.
A. College Level Correspondence	DANTES, the replacement for USAFI will become operational during FY 75 and will provide, thru GED, opportunity for service personnel to complete accredited correspondence work from selected colleges and universities.	
B. Service Schools Correspondence	Course catalogs of all Army Service schools are maintained at MOS libraries where GED staff provide guidance in course selection and assist personnel with application.	
VIII. Testing	Testing services will be resumed through DANTES during FY 75. A full range of tests from basic achievement tests, HS-GED to CLEP - GE's and subject examinations will be made available thru AEC testing facilities. Additionally diagnostic, vocational interest tests, ETS sponsored (GRE, LSAT, NTE, ATGSB) and military tests (ACB, FAST, OQI, AFQT, ALPT, DLAT) are administered at some of the AEC with VII Corps.	

VII CORPS

SECTION B - PRIORITIES AND ENROLLMENT RATES FOR MILITARY PERSONNEL

<u>CODE</u>	<u>PRIORITY</u>	<u>NO. IN CATEGORY</u>	<u>AV. QTR ENROLL</u>	<u>SCHEDULE</u>
.1 Remed. Reading	1st <u>1</u>	1,287	1,273	Duty
HS PREP	3rd	13,147	5,001	Duty
.2 Vo-Tech	4th 1st	46,694	1,730	Duty/Non-duty
.3 College Undergrad	5th	50,773	3,656	Duty/Non-duty
Grad	2nd (non- duty)	4,613	835	Non-duty
.4 Foreign Lang				
Eng as a 2d Lang	1st <u>2</u>	7,467	528	Duty
Headstart	2nd	15,873	7,454	Duty
Host Nation Lang Tng	6th	42,767	2,528	Duty/Non-duty
.5 MOS- Related Instruc	4th	64,751	2,942	Duty
.6 General Instruc		46,215	374	Duty/Non-duty
.7 Counseling	N/A	74,778	22,550	Duty/Non-duty

SECTION B (continued)

<u>CODE</u>	<u>PRIORITY</u>	<u>NO. IN CATEGORY</u>	<u>AV. QTR ENROLL</u>	<u>SCHEDULE</u>
.8				
Testing	N/A	28,283	12,619	Duty/Non-Duty
MOS Lib		23,775	11,025	
Lang Lab		21,005	1,696	

1 1st priority for individuals with English reading deficiency.

2 1st priority for individuals whose basic language is not English.

VII CORPS

SECTION C - QUARTERLY PARTICIPATION RATES

PROGRAM CODE	1st Qtr		2nd Qtr		3rd Qtr		4th Qtr	
	#Participation		#Participation		#Participation		#Participation	
	Mil	Civ	Mil	Civ	Mil	Civ	Mil	Civ
1. Remedial Reading	508	26	640	26	741	32	620	25
HS PREP	4,114	76	5,948	89	4,600	87	5,506	81
2. Vo-tech	1,206	57	1,571	86	1,993	95	2,178	95
3. College								
Undergrad	3,594	417	3,461	486	3,607	610	3,707	372
Grad	794	157	879	176	868	176	796	171
4. Foreign Lang								
Eng as a 2nd Lang	465	29	578	39	559	41	508	41
Headstart	7,390	144	7,176	173	6,989	182	8,160	174
Host Nation Lang Tng	2,457	636	2,474	695	2,664	694	2,558	557
5. MOS-Related Inst	2,243	103	2,788	106	3,142	59	3,180	50
6. Gen Inst	487	296	689	287	500	287	511	257
7. Counseling	21,707	982	23,117	1,086	24,104	1,068	21,976	915
8. Testing	8,698	442	13,006	568	14,827	587	12,985	632
MOS Lib	10,624	36	10,794	30	11,171	28	11,509	32
Lang Lab	1,448	348	1,632	419	1,787	399	1,665	376

VII CORPS

SECTION D - CORPS CONSOLIDATION OF COMMUNITIES - PROJECTED ENROLLMENTS (ANNUAL)

	ANSB		ASCH		AUGS		BAD T		BAMB		GARM		GOEP		HEIL	
	MIL	CIV	MIL	CIV	MIL	CIV	MIL	CIV	MIL	CIV	MIL	CIV	MIL	CIV	MIL	CIV
1. Rem Read	160	15	110	0	39	9	0	0	43	0	0	0	0	0	137	16
HS PREP	1,120	30	525	18	299	28	12	0	1,978	20	0	0	713	14	758	24
Coll PREP	160	0	100	0	160	0	0	0	80	0	0	0	0	0	120	0
2. Vo-Tech	800	25	355	0	515	34	0	0	360	0	0	0	140	0	210	19
3. College																
Undergrad	1,000	47	479	34	1,349	175	246	189	640	23	42	12	614	44	334	45
Graduate	160	26	148	37	252	27	28	16	0	0	8	4	94	6	100	16
4. Forg Lang																
Engl 2d	80	12	85	28	48	17	0	0	160	0	0	0	93	11	68	7
Headstart	2,080	110	1,224	0	6,467	120	47	118	2,000	34	0	0	920	36	1,084	41
Host Nation	500	140	243	84	570	120	0	0	264	198	33	15	80	20	300	59
5. MOS-Rel	550	55	1,530	0	335	106	0	0	1,404	0	0	0	124	28	188	3
6. Gen Instr	0	0	0	0	0	0	0	0	0	0	0	0	60	21	200	0
7. Counseling	4,800	160	4,100	103	10,940	136	824	132	5,424	94	28	72	3,600	140	1,435	240
8. Testing	4,000	30	685	342	7,600	60	2,370	244	3,382	0	56	20	650	37	1,381	52
MOS Lib	4,000	0	3,300	25	2,400	0	1,870	0	924	0	40	0	2,200	0	955	0
Lang Lab	340	130	0	0	2,400	0	12	28	450	0	106	10	0	0	0	0

VII CORPS

SECTION D - CORPS CONSOLIDATION OF COMMUNITIES - PROJECTED ENROLLMENTS (ANNUAL) (con't)

	MUN		N ULM		NURN		SCH H		SCHW		STUT	
	MIL	CIV	MIL	CIV	MIL	CIV	MIL	CIV	MIL	CIV	MIL	CIV
1. Rem Read	40	48	60	0	408	0	45	0	160	8	960	6
HS PREP	60	14	532	20	6,518	31	40	10	1,592	8	2,596	64
Coll PREP	0	0	105	0	190	0	0	0	160	0	580	0
2. Vo-Tech	369	42	180	0	830	80	40	20	669	17	1,600	116
3. College												
Undergrad	441	730	695	35	1,664	192	95	0	1,412	18	3,052	404
Graduate	440	220	0	0	132	88	12	0	91	0	1,404	148
4. Forg Lang												
Engl 2d	20	0	10	0	245	1	0	0	380	8	348	28
Headstart	100	32	1,000	30	3,184	40	80	0	2,052	0	5,828	153
Host Nation	52	220	200	80	2,899	445	60	10	705	28	2,624	1,963
5. MOS-Rel	88	0	245	0	1,280	59	95	0	1,502	0	1,616	56
6. Gen Instr	146	437	0	0	160	108	0	0	195	10	732	100
7. Counseling	740	907	5,250	190	17,985	158	560	0	3,596	200	13,412	1,228
8. Testing	269	383	4,350	190	6,862	62	540	0	1,872	162	2,500	240
MOS Lib	120	19	1,800	80	6,898	0	240	0	2,580	0	5,088	0
Lang Lab	190	1,090	300	0	1,650	100	0	0	0	0	1,294	124

VII CORPS

SECTION D - CORPS CONSOLIDATION OF COMMUNITIES - PROJECTED ENROLLMENTS (ANNUAL) (con't)

	WURZ		7ATC		CORPS TOTAL	
	MIL	CIV	MIL	CIV	MIL	CIV
1. Rem Read	387	7	4	0	5,093	109
HS PREP	1,926	35	1,331	20	20,006	336
Coll PREP	120	0	864	0	2,645	0
2. Vo-Tech	468	0	384	0	6,920	353
3. College						
Undergrad	1,526	87	1,037	52	14,623	2,087
Graduate	279	48	189	125	3,337	761
4. Forg Lang						
Engl 2d	282	2	291	28	2,110	142
Headstart	2,768	46	982	31	29,816	791
Host Nation	1,090	320	491	102	10,111	3,804
5. MOS-Rel	1,028	12	1,783	0	11,768	319
6. Gen Instr	3	7	0	0	1,496	683
7. Counseling	12,708	120	5,502	171	90,201	4,754
8. Testing	6,070	354	7,889	53	50,476	2,229
MOS Lib	5,721	0	5,956	0	44,098	124
Lang Lab	0	0	48	12	6,784	1,494

CHAPTER NUMBER FIVE

THE 1ST U.S. SUPPORT BRIGADE COMMAND

EDUCATION SERVICES PLAN

PART I

1ST SUPPORT BRIGADE COMMAND EDUCATION NEEDS

SECTION A. INTRODUCTION: The true common denominator of the Education Services Area (ESA) of the 1st Support Brigade is its diversity. No two of its eight communities are alike though their population sizes may be comparable, e.g., Bremerhaven, Worms, Zweibruecken, or Heidelberg and Pirmasens, or Mannheim and Kaiserslautern.

Combat troops are relatively few, but there are many combat support and combat service support troops throughout the ESA. There are, for example, many involved in communications, equipment, maintenance and transportation. These in medicine-dentistry, finance, military police and postal service are ubiquitous.

Diversity is furthered by large concentrations of family housing developments in certain communities of servicemen drawn from wideranging sites, e.g., Kaiserslautern's Vogelweh, Karlsruhe's Paul Revere Village, and Mannheim's Benjamin Franklin Village. Two other communities are unique in the mixtures of members of sister services: Bremerhaven and Zweibruecken.

SECTION B. LISTING OF EDUCATION NEEDS BY ARMY MANAGEMENT CODE:

<u>Army Management Code Number</u>	<u>Instructional Program Description</u>	<u>Total Number of Soldiers in Need of this Category of Institution</u>
P 871117.1000	High School Instruction	5,721
P 871117.20000	Vocational-Technical Instruction	21,031
P 871117.30000	College/University Instruction	35,532
P 871117.40000	Foreign Language Instruction	32,219
P 871117.50000	MOS-Related Instruction	28,153
P 871117.60000	General Interest Instruction	10,094
P 871117.70000	Counseling	35,729
P 871117.80000	AEC Learning Support (Testing, MOS Lib., Labs.)	42,549

SECTION C. SOURCES: Standard information sources for predicting needs include periodic education level surveys and Personnel Qualification Reports (PQRs). The felt needs of military personnel are expressed to counselors during in-processing and at subsequent sessions. Organized means include meetings of NCO councils, GED briefings, and visits to concerned unit and installation commanders. Interest surveys have been taken and "want lists" filled in at education centers. Past references are evidenced by class rosters and GED individual records on-hand in AECs.

SECTION D. SPECIAL NEEDS: Needs not readily apparent in the above program descriptions include the above education courses and related services for the adult dependents of servicemen. Nonuniformed personnel are admissable on a spaceavailable basis; the needs of wives are often not identical with their spouses. Foreign descent wives, i.e., Koreans, need American language and orientation courses quite different from High School PREP or English as a Second Language (ESL) primarily for Puerto Ricans.

Community ESP address requirements to make explicit that which standard nomenclature does not disclose, i.e., the need for flexible scheduling to accommodate individuals with nonduty time and travel distance problems. Classroom space is also indispensable for reaching the objectives prescribed by HQDA and in the community and regional ESPs.

PART II

1ST SUPPORT BRIGADE COMMAND EDUCATION PROGRAM

SECTION A. PROGRAM DESCRIPTION

<u>Program</u>	<u>Description</u>	<u>Frequency</u>
I. High School PREP	The predischage Education Program is operated primarily thru USADESEA PREP, but also thru Big Bend Community College both funded by VA. Eligible are EM lacking grammar or High school completion or proficiency. Programs are at elementary, high school and pre-college, levels. Courses are given in reading, English, mathematics, science, social studies, and in other subjects in conventional classes and in a few "open admission" learning laboratories. Adult dependents (up to 20% per class) are welcome to attend and graduate.	From 4 to 6, 6 - 9 week cycles per annum (p/a). NCO Night PREP and Remedial Reading less often, @ 8 week, College PREP 1 to 3, 8 week cl/cles p/a Usually inphase w/UMD: 5,8 week terms p/a
II. Vocational Programs	Nonduty, regular or "hands-on" and training by Central Texas College (CTC), City Colleges of Chicago (CCC), and Embry-Riddle Aeronautical University (ERAU) in aviation, in Comm-Electronics, Data Processing, Law Enforcement, Military and Middle Management now, and perhaps Automobile Technology by January 1975. This is a recent and expanding program in this region. Certificates and associate degrees are attainable.	
III. College Instruction	Credits may be earned in resident and nonresident instruction and by examination and applied to the schools listed below, to others, e.g., SOC	

<u>Program</u>	<u>Description</u>	<u>Frequency</u>
	colleges, and to the New York Regents External Degree Program and to State University of New York (SUNY).	
A. Associate Programs	Associate of Arts (AA) and Associate of Science (AS) degrees are certificate programs with supplementary, e.g., cultural, courses from the University of Maryland (UMD). The UMD AA degree concentrations are in general studies, law enforcement, and in management.	
B. Baccalaureate	Bachelors degrees (BS & BA) are available in our ESA thru UMD. Popular majors are in business, German, Government & Politics, History, Psychology & Sociology.	
C. Graduate Programs	Five AECs -- for the lion's share in USAREUR -- have University of Southern California (USC) MS programs in Systems Management, one AEC has MS in education. Five AECs have Boston University (BU) programs in Masters of Education, Masters of Business Administration or Masters of Engineer Management programs, Recent expansion is being consolidated.	2 long & 2 short terms p/a
IV. Foreign Language Instruction	Headstart classes are 3/4 situational language content, and 1/4 orientation content. They have expanded, are now leveling off, and remain popular with students and commander. The Gateway to Germany instruction is also new, replacing old ALM & USAFI texts used off-duty, not on-duty as much as in VII	40 hrs in 1-2 weeks, for 20-40 terms, p/a

<u>Program</u>	<u>Description</u>	<u>Frequency</u>
	Corps, DLP levels I - III or NTE V. English as a 2d Language (ESL)/American Language Course (ALC) use DLI materials and were run in this region thru PREP, but with GED funds eff. this fall.	480 hours (Max). 1 - 3 terms p/a
V. MOS-Related Instruction	Subjects related to equivalent civilian skills, but mostly purely military training, given to improve mission effectiveness, e.g., Methods of Instruction, Effective Writing, MOS Study and Testing Procedures, Teletype Operation, Food Service, Typing & Correspondence, Unit Admin, and Avionics & Electronics.	40 hour, 3 week, 4 - 12 terms p/a
VI. General Interest	Courses in human relations are sometimes taught. Classes for wives are offered on a pro-rata paid basis when and where no conflicts exist with GED courses for military personnel.	Indef. Length per demand
VII. Correspondence Study	Every AEC in this region's ESA has recently become fully capable of registration in Army, AF, Navy, USMC extension courses with catalogs and forms on-hand in MOS libraries. Civilian school catalogs are also available in quantity in AECs before and since the termination of USAFI on 31 May 74. Counseling with respect to proprietary school correspondence courses is another GED feature. A DANTES LOI is expected soon with details on VA registration procedures and precautions.	Daily
VIII. Testing	The college level exam program (CLEP) was resumed in August with DANTES, and GED testing will soon start. Advice about subject stan-	Daily

<u>Program</u>	<u>Descriptions</u>	<u>Frequency</u>
	<p>standardized tests (SST) and end-of-course tests (EOCT) is also imminent. ACB retesting is ineffective despite recommendations to HQ USAREUR, but another attempt is being made through the Brigade AG to stock ACB for PREP graduates. Too few standard diagnostic e.g., interest survey, tests are available to AEC counselor; some were purchased lately. Educational Testing Service (ETC) and other fee-type examinations are ordered on individual basis, or coordinated with USDESEA or other proctors.</p>	Daily

1ST SUPPORT BRIGADE

SECTION B. FORMAT: PRIORITIES AND ENROLLMENT RATES FOR MILITARY PERSONNEL

<u>CODE</u>	<u>PRIORITY</u>	<u>NO. IN CATEGORY</u>	<u>AVG QTRLY ENROLLMENT</u>	<u>SCHEDULE</u>
1. High School -Remedial Reading	1st <u>1</u>	543	210	Duty
-PREP	3d	4,754	1,382	(Minimum) 50% Duty
2. Vocational/ Technical	4th 1st	21,031	825	Duty Non-duty
3. College -Undergrad	5th	33,439	1,952	Duty (When Classes are not in conflict with mission re- quirements)
-Graduate	2d (non- duty)	2,093	629	
4. Foreign Language -Eng. as a 2d Lang	1st <u>2</u>	1,335	547	Duty
-Headstart	2d	6,385	2,333	Duty
-Other Lang Tng	6th 3d	24,499	1,131	Duty Non-duty
5. MOS-Related Instruction	4th	28,153	1,242	Duty
6. General Instruc		10,094	178	Duty/Non-duty
7. Counseling	n/a	35,729	11,534	Duty
8. Learning Support -Testing	n/a	16,470	3,758	Duty
-MOS Lib		13,847	4,857	
-Learning Laboratory		12,232	1,578	

1ST SUPPORT BRIGADE

SECTION C.

QUARTERLY PARTICIPATION RATES

PROGRAM CODE	1st QTR		2d QTR		3d QTR		4th QTR	
	<u>#Participation</u>		<u>#Participation</u>		<u>#Participation</u>		<u>#Participation</u>	
	<u>Mil</u>	<u>Civ</u>	<u>Mil</u>	<u>Civ</u>	<u>Mil</u>	<u>Civ</u>	<u>Mil</u>	<u>Civ</u>
1. HIGH SCHOOL								
-Remedial	205	40	230	47	226	49	210	44
-Reading	1343	84	1389	107	1425	115	1371	110
-PREP								
2. VOCATIONAL								
TECHNICAL	665	63	787	71	895	93	950	83
3. COLLEGE								
-Undergrad	1927	524	1963	509	2031	418	1886	401
-Graduate	617	236	621	216	650	207	628	206
4. FOREIGN LANG								
-Eng.as a 2d								
Language	143	9	143	23	136	29	125	10
-Headstart	2265	158	2184	143	2285	163	2196	149
-Other								
Lang Trng	1114	342	1157	356	1192	338	1061	292
5. MOS-RELATED								
INSTRUCTION	1140	77	1275	98	1304	108	1247	88
6. GENERAL								
INSTRUCTION	166	51	161	58	185	57	199	60
7. COUNSELING	11476	1526	11356	1622	11611	1614	11691	1859
8. LEARNING								
SUPPORT								
-Testing	3506	162	4144	165	4184	166	3301	143
-MOS Lib	4872	-	5125	-	5007	-	4425	-
-Learning								
Laboratory	1120	345	1172	298	1233	317	1106	298

1ST SUPPORT BRIGADE

SECTION D. PROJECTED ENROLLMENTS REGIONAL CONSOLIDATION OF COMMUNITIES (ANNUAL)

PROGRAM CODE	BREMERHAVEN		HEIDELBERG		KAISERSLAUTERN		KARLSRUHE	
	MIL	CIV	MIL	CIV	MIL	CIV	MIL	CIV
1. HIGH SCHOOL								
-Remedial Reading	---	---	55	(-)	546	(165)	88	(-)
-PREP	120	(-)	415	(28)	1696	(231)	966	(32)
2. VOCATIONAL								
TECHNICAL	---	---	255	(105)	1747	(86)	255	(21)
3. COLLEGE								
-Undergraduate	506	(54)	976	(923)	2738	(331)	611	(81)
-Graduate	31	(19)	440	(332)	1320	(320)	140	(72)
4. FOREIGN LANGUAGE								
-Eng., 2d Lang	15	(-)	28	(24)	268	(27)	111	(8)
-Headstart	180	(-)	1360	(36)	2799	(144)	1460	(60)
-Other Lang								
Training	141	(22)	1180	(555)	1490	(346)	710	(126)
5. MOS-RELATED								
INSTRUCTION	90	(-)	372	(162)	1800	(210)	336	(-)
6. GENERAL INSTRUCTION								
---	---	---	---	---	531	(32)	---	---
7. COUNSELING	2155	(117)	6780	(3010)	14000	(1850)	5405	(200)
8. LEARNING SUPPORT								
-Testing	450	(-)	1413	(70)	7113	(134)	810	(140)
-MOS Library	501	(-)	3100	(-)	7453	(-)	1564	(-)
-Learning Lab	49	(-)	1600	(650)	1860	(370)	---	---

1ST SUPPORT BRIGADE

SECTION D. PROJECTED ENROLLMENTS REGIONAL CONSOLIDATION OF COMMUNITIES (ANNUAL)

PROGRAM CODE	MANNHEIM		PIRMASENS		WORMS		ZWEIBRUECKEN		1ST SPT BDE	
	MIL	CIV	MIL	CIV	MIL	CIV	MIL	CIV	MIL	CIV
1. HIGH SCHOOL										
-Remedial Reading	62	(-)	50	(5)	10	(2)	60	(8)	871	(180)
-PREP	1690	(64)	420	(34)	113	(19)	108	(8)	5528	(416)
2. VOCATIONAL										
TECHNICAL	512	(34)	310	(4)	50	(12)	168	(48)	3297	(310)
3. COLLEGE										
-Undergraduate	1880	(159)	552	(118)	300	(70)	224	(116)	7807	(1852)
-Graduate	260	(57)	57	(4)	68	(17)	200	(44)	2516	(865)
4. FOREIGN LANGUAGE										
-Eng., 2d Lang	86	(12)	39	(-)	---	---	---	---	547	(71)
-Headstart	1560	(65)	720	(48)	175	(60)	376	(200)	8930	(613)
-Other Lang										
Training	664	(117)	94	(46)	109	(36)	136	(80)	4524	(1328)
5. MOS-RELATED										
INSTRUCTION	1536	(-)	600	(-)	40	(-)	192	(-)	4966	(372)
6. GENERAL										
INSTRUCTION	60	(-)	---	---	20	(10)	100	(184)	711	(226)
7. COUNSELING										
	7180	(650)	5200	(260)	1230	(210)	4184	(324)	46134	(6621)
8. LEARNING SUPPORT										
-Testing	3779	(78)	900	(104)	110	(30)	460	(80)	15034	(636)
-MOS Library	3782	(-)	1940	(-)	225	(-)	864	(-)	19429	(-)
-Learning Lab	645	(102)	160	(40)	109	(36)	208	(60)	4631	(1258)

CHAPTER NUMBER SIX

THE U.S. ARMY BERLIN COMMAND

EDUCATION SERVICES PLAN



DEPARTMENT OF THE ARMY
HEADQUARTERS, BERLIN BRIGADE
APO 9742

AEBAB-CG

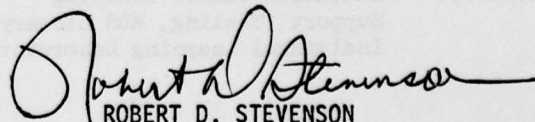
19 August 1974

FOREWORD

The educational programs contained in the US Army Berlin Education Services Plan offer educational opportunities to every member of the Berlin American Community. Programs and courses range from the basic to the graduate level and from technical vocational to purely academic subjects. A wide spectrum of administrative services, such as counseling, testing, availability of laboratory and library facilities round out the total educational offerings of the BBde Education Branch.

The primary motivating factor in the establishment and conduct of a multifacet Education Program at Berlin is to provide means whereby the modern soldier can better himself educationally. The increasing complexity of national defense and the highly technical nature of modern warfare have created special requirements in the fields of training and education. It has become vitally important that all military personnel with potential for development be brought to the maximum level of their educational capability. The education programs offered at the BBde Education Centers give all personnel the opportunities to achieve these goals.

I urge each one, officer, enlisted and also civilian, to investigate the programs and subjects described in the Educational Services Plan and to participate in the Berlin Education Branch sponsored activities to the highest degree possible.


ROBERT D. STEVENSON
Brigadier General, USA
Commanding

PART I

BERLIN COMMAND EDUCATION NEEDS

Section A: Introduction:

Berlin Command Education (GED) needs are in keeping with the diversity of command unit components. Experience reveals that the command's Infantry Battalions require Basic English Language Skills, Remedial Reading, PREP, Technical-Vocational Instruction, Foreign Language Training.

Berlin Command Support Troops have traditionally required PREP, Foreign Language Training, and now Vocational-Technical Training.

USASA and Military Intelligence Units stationed in Berlin require extensive Foreign Language Training as well as numerous Undergraduate and Graduate University Programs.

Berlin's large Civilian Community requires Foreign Language Training, Vocational-Technical Instruction, Undergraduate and Graduate University Programs. The presence of a sizable diplomatic State Department contingent also necessitates conduct of graduate school programs and general instruction programs, which in program size and content are well above normal program offerings in these categories.

Air Force Units stationed in Berlin are also supported by the Berlin Command. Although the Berlin Air Force provides a variety of USAFE sponsored education programs, the majority of Berlin based Air Force personnel take advantage of and participate in US Army Education (GED) Programs conducted under the auspices of the G3 Education Branch.

Section B: Listing of Education Needs by Army Management Code:

Army Management Code Number	Instructional Program Description	Total Number of Soldiers in Need of this Category of Instruction
P.871117.10000	High School Level Instruction	389
P.871117.20000	Vocational Instruction	3309
P.871117.30000	College Instruction	3805
P.871117.40000	Foreign Language Instruction	4120
P.871117.50000	MOS-Related Instruction	4660
P.871117.60000	General Interest Instruction	2500
P.871117.70000	Counseling	6000
P.871117.80000	Education Center Learning Support (Testing, MOS Library, Individual Learning Laboratory)	6350

Section C: Survey Sources:

Data concerning itemized Command educational needs given in Section B was obtained from following documents:

- a. Education Rosters, BBde ADP Print out.
- b. Form 2-1, Personnel Information Card.
- c. Battalion S-1 Personnel Files.
- d. DA Forms 669 and Counseling records.
- e. Local educational interest surveys.

Section D: A unique educational need of the Berlin Command is the teaching of US Citizenship Courses. These courses are conducted in cooperation with the US Immigration Department in order to prepare non-citizen US military personnel and non-citizen dependents of US military personnel and of DA civilians for their citizenship examinations in the United States.

The objectives of the courses are to insure that all alien candidates for US citizenship can (a) speak, read, and write English; and (b) demonstrate a knowledge and understanding of the fundamentals of US History and Government. The course consists of 30 hours of instruction and are conducted upon request of military commanders or whenever 10 or more interested persons are enrolled.

PART II BERLIN COMMAND EDUCATION PROGRAM

The Berlin Brigade G-3 Education Branch Education Service Plan outlines the educational opportunities available to military personnel and adult dependents in the Berlin Command. In accordance with the provisions of AR 621-5, General Educational Development opportunities are provided to enable military personnel to:

1. Perform their military assignment more effectively.
2. Prepare for more responsible military assignments and increase their chances for promotion.
3. Maintain continuity in the academic or vocational training begun before entering military service or while stationed elsewhere.
4. Prepare to continue their education after they leave the Army, and increase their value to the civilian community when they leave the Army.

The information contained in this Education Services Plan provides guidance to Berlin Commanders and Berlin Brigade GED personnel that can be used to implement effective educational training programs by using the services and facilities of installations education centers. Course offerings and schedules presented in this Services Plan are not intended to be all encompassing but may be further expanded and broadened, or used as guides when developing other educational programs which are responsive to specific command needs.

All Berlin Brigade Education Centers and/or Education Offices are prepared to offer assistance in the planning of individual educational careers or in the setting up of programs designed to meet unit training requirements.

SECTION A - PROGRAM DESCRIPTION

<u>Program</u>	<u>Narrative Description</u>	<u>Projected Term Schedules</u>
I. High School PREP	PREP enables soldiers who have not completed high school to receive, on a duty - non duty basis, professional instruction in pursuite of a high school diploma, either from a USADESEA high school or from the individual's former high school. If desired, soldiers may also secure a GED equivalency certificate	PREP classes operate on a nine-week cycle Monday - Friday, 1300 - 1700 hours.

<u>Program</u>	<u>Narrative Description</u>	<u>Projected Term Schedules</u>
----------------	------------------------------	---------------------------------

from this program. PREP offers the following courses that are taught by fully certified instructors. Regular high school academic courses including U.S. Government, U.S. History, Contemporary Problems, English Grammar, and Literature, and Mathematics. Remedial courses include reading instruction that will further prepare the soldiers for the GED test battery. To provide flexibility, credit may also be earned through Independent Study courses. A minimum of sixteen units of credit must be earned in order to acquire the USDESEA diploma.

II. Vocational Programs

Central Texas College gives servicemen in Berlin the opportunity to achieve their career educational goals through college level vocational/technical programs. Courses in Electronics, Law Enforcement, and NCO Management have been offered in Berlin since June 3, 1974. Other career areas such as Automotive Technology Air Conditioning and Refrigeration, or Drafting and Design Technology are now being added on our schedule for institution at a later date. Courses offered by Central Texas College lead to two levels of certificates, Competency and Proficiency, and to the Associate of Arts Degree in Applied Science. Courses are open to all military personnel and their dependents who are high school graduates or hold a

<u>Program</u>	<u>Narrative Description</u>	<u>Projected Term Schedules</u>
	<p>GED equivalency certificate. All courses being offered by Central Texas College have been approved for tuition assistance or VA funding for eligible personnel.</p> <p>Central Texas College is a Serviceman's Opportunity College which recognizes and accomodates the needs of the serviceman or woman in their quest for education. Students with Central Texas College can establish credit through USAFI courses and standardized examination, the College Level Examination Program (CLEP), institutional challenge exams, military technical schools, and courses from other institutions of higher learning as they apply to the student's chosen curriculum.</p>	
III. College Instruction	<p>The Berlin Brigade Education operates college and University Programs which offer fully accredited undergraduate and graduate level instruction to military personnel, dependents, and authorized civilian personnel. These programs permit members of Berlin Command to pursue academic studies in such diverse areas as International Affairs, Economics, Business Administration, Urban Affairs, Education (Counseling and Guidance), Data Processing, Business Affairs, and General Studies. Degrees to be earned range from professional certificates to Master's Degree in Education, Economics, Urban Affairs, International Relations and Business Administration.</p>	

<u>Program</u>	<u>Narrative Description</u>	<u>Projected Term Schedules</u>
A. Associate or Baccalaureate Programs	<p>The University of Maryland European Division offers courses leading to Associate or Bachelor of Arts Degrees in General Studies. The General Studies curriculum provides an opportunity for a qualified student to enroll in and complete a degree program permitting concentration principally in the social sciences and the humanities. This program fosters the acquisition of a useful body of knowledge related to the student's intellectual and community life, and to their career. The principal concentrations of study are limited to Commerce (Business Administration), Economics, English, Government and Politics, History, Philosophy, Psychology, Sociology, and German. In special cases, and with the permission of the Dean, University College, a student may elect concentrations in other areas. At least one-third of the courses in the primary area of concentration and the secondary area of concentration must be taken with the University of Maryland.</p>	<p>Term one- 26 Aug to 18 Oct 1974. Term two - 28 Oct to 20 Dec 1974. Term three- 20 Jan 1975 to 14 Mar 1975. Term four- 31 Mar 1975 to 23 May 1975. Term five- 2 Jun to 25 Jul 1975.</p>
B. Graduate Programs	<p><u>Boston University</u> offers programs leading to a Masters of Science in Business Administration and a Master of Arts degree in International Relations. It is desirable that applicants</p>	<p>Term one- Jul and Aug 1974. Term two- 16 Sept through 20 Dec 1974. Term three- 15 Jan to 15 Feb 1975. Term four- 1 Mar through 31 May 1975.</p>

AD-A084 212

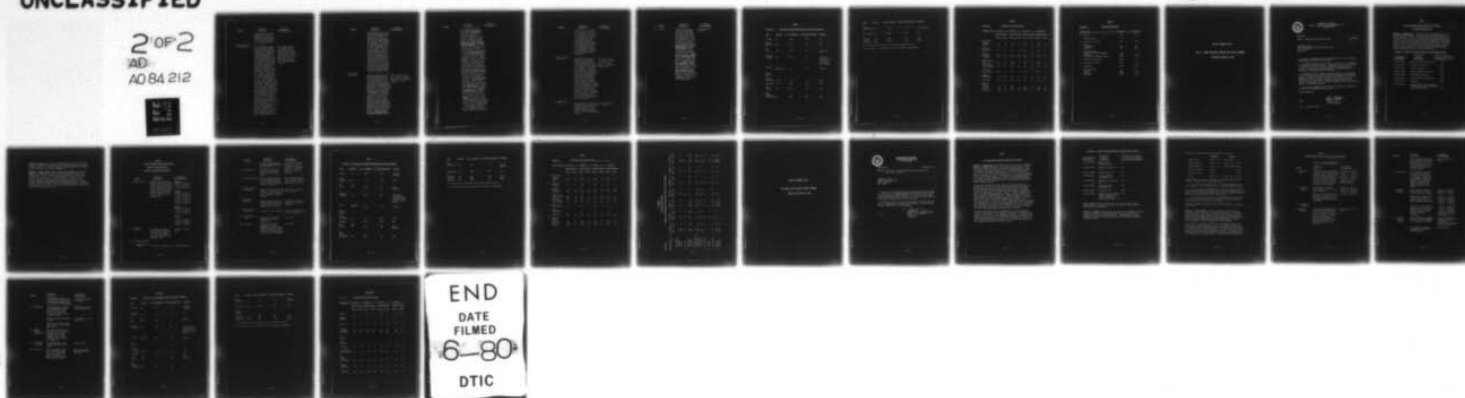
ARMY EUROPE AND SEVENTH ARMY APO NEW YORK 09403
THE USAREUR COMMAND EDUCATION SERVICES PLAN (ESP). (U)
AUG 74

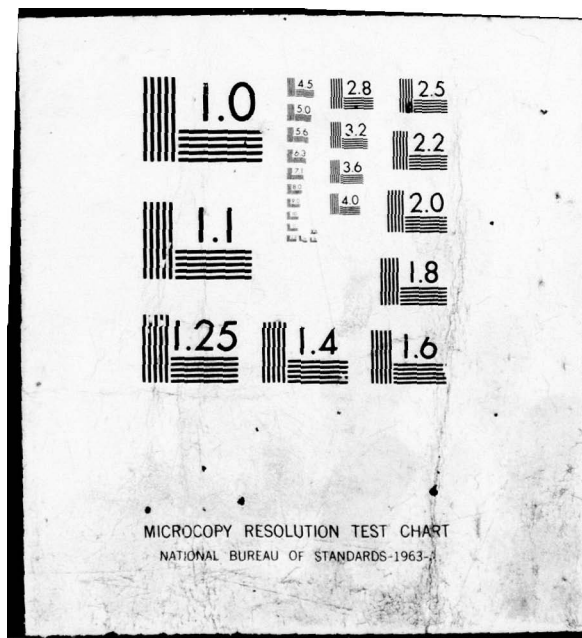
F/G 5/9

UNCLASSIFIED

NL

2 OF 2
AD
AD 84 212





<u>Program</u>	<u>Narrative Description</u>	<u>Projected Term Schedules</u>
	have at least 22 Months remaining in their European tour of duty upon commencing these studies so as to allow successful program completion.	
IV. Foreign Language Instruction	<p>Foreign language courses are available in German, French, Russian, Spanish, and Italian on either the elementary, intermediate, or the advanced level. Language Laboratories also offer study opportunities in languages such as Vietnamese, Hungarian, Polish, and Czech. In addition the G-3 Education Branch conducts the USAREUR and Command Directed Headstart Orientation Course. This orientation program runs for 17 Hours. It provides for timely introduction to the German language and way of life to the incoming soldier. The orientation course includes basic forms of greeting, shopping, ordering a meal, telling time, the days of the week, counting to 100, means of transportation, general expressions of time, directions, motorist's vocabulary, menu translator, and conversation table etc. It also includes the Berlin districts, local customs, and points of interest. The "German Headstart Orientation Course" provides for a smooth tie-in with the language courses conducted at the Berlin Brigade Army Education Center. The program is offered to all personnel newly assigned to Berlin Brigade during their</p>	<p>All Language courses are offered during regularly scheduled Adult Education terms at the Berlin Brigade Army Education Centers. Additional courses are conducted at every Berlin Brigade Education Center throughout the year.</p>

<u>Program</u>	<u>Narrative Description</u>	<u>Projected Term Schedules</u>
	<p>inprocessing at the Berlin Brigade Replacement Detachment. The G-3 Education Branch also conducts the USAREUR directed mandatory DLI American English Language Program. This program is designed to provide intensive language training to military personnel of foreign decent. The DLI American English Courses consist of Elementary and Intermediate parts. Each course is accompanied by a set of similarly numbered prerecord tapes which provided aural-oral exercises coordinated with the contents of the course lessons. Course includes classroom instruction, with integrated individual language and/or reading laboratory studies.</p>	
V. MOS Related Instruction	<p>The MOS-related education training program provided by the Berlin Brigade G-3 Education Branch, is used to furnish instruction and information having immediate application in improving the performance of military duties. The function of the GED program in support of MOS skill development and Improvement is supplemental to service-school, unit and on-th-job training. Of particular value is the use of this program to assist commanders in executing MOS-related instruction that is beyond the capability of units training capabilities and facilities. The following technical and combat training courses are offered: <u>MOS Proficiency</u> <u>Preparatory Course</u>: Prepares</p>	<p>Some of these courses are in session throughout the year. Starting dates are announced locally.</p>

<u>Program</u>	<u>Narrative Description</u>	<u>Projected Term Schedules</u>
	the student for MOS Testing. <u>Drivers' Training</u> : 20 Hours. A comprehensive coverage of traffic laws, signs and regulations needed to qualify for issuance of a USAREUR Military and/or POV drivers license. <u>TAMMUS (The Army Maintenance Management System)</u> : 20 hours. Covers mainly operator forms and procedures in reporting actions taken, periodic checks, results of inspections, etc. <u>Map and Compass (Basic)</u> : 20 Hours. Trains personnel in basic military map reading, orientation, use, etc. <u>Map Reading</u> : 4 Hours. Purely a review for personnel that already have a basic knowledge of military map reading. Additionally, the following Leadership and Administrative Training Courses are offered: <u>MOI (Methods of Instruction)</u> : 40 Hours. Designed to familiarize Officers and NCO's with the basic tools, methods and procedures of Military Instruction. <u>Effective Writing</u> : 40 Hours. Basic writing principles, based on ST 12-160, "Effective Army Writing". <u>Unit Administration</u> : 40 Hours. Cover basic knowledge needed by a company clerk. <u>Military Correspondence</u> : 20 Hours. Clerical and administrative work done by enlisted men with an MOS in the 70 series. <u>Typing</u> : 20-60 Hours. For beginners or those with only limited experience. Practical work and basic typing exercises. A Food Service Cooking Courses is also offered periodically. In this program, selected Berlin Brigade Food Service personnel receive one week of	

<u>Program</u>	<u>Narrative Description</u>	<u>Projected Term Schedules</u>
	instruction in the Hilton Hotel kitchens. The instruction covers the areas of: Technical layout of the kitchen and its general organization, the control and storing of food items, menu planning (including menus for special occasions/holidays), the production of a menu and its presentation, and the preparation of pastries, buffets, desserts, and sandwiches.	
VI. General Interest Instruction	Special Adult Education Terms are offered three times during the year by the Berlin Brigade Education Centers. Participation in the Special Adult Education Program is voluntary and courses are conducted during off-duty evening hours only. The terms present educational opportunities for the entire American population of Berlin Command. Those non-college courses usually offered include Criminology, Sociology, Personnel Management, Algebra, Basic Electronics, Radio Repair, use of Slide Rule, Mechanical Drawing, Typing, as well as Basic and Advanced Data Processing. Additionally, US Citizenship courses are conducted throughout the year as required.	Term one- 1 Aug to 31 Oct 1974. Term Two- 15 Jan to 31 Mar 1975. Term three- 1 May through 21 Jul 1975.
VII. Coorespondence Study	Berlin Education Centers assist As individually soldiers and civilians in en-rolling in Military Correspondence Courses from the various service schools as well as college correspondence courses.	scheduled

<u>Program</u>	<u>Narrative Description</u>	<u>Projected Term Schedules</u>
VIII. Testing	<p>Berlin has three official testing centers. High School level GED As well as the College Level Examination Program (CLEP) test series are administered. Additionally the following tests are also given upon individual request:</p> <p><u>Aptitude Test For Occupations (GATB)</u>: An aid in discovering the basic occupational interests and abilities possessed by an individual. <u>Intermediate Achievement Test</u>: Aid in determining readiness for the high school GED test and GT preparation. <u>Strong Vocational Preference Test</u>: Shows the likes and dislikes of people interested in certain occupational fields. <u>Kuder Preference Test</u>: Helps to make a systematic approach to a person's preference in choosing an occupational field. <u>U.S. Civil Service Test</u>.</p>	As individually scheduled.

BERLIN

SECTION B. PRIORITIES AND ENROLLMENT RATES FOR MILITARY PERSONNEL

<u>Code</u>	<u>Priority</u>	<u>No. in Category</u>	<u>Av. Qtrly Enrollment</u>	<u>Schedule</u>
1. HS PREP	3d	389	180	Duty
Remed Reading	1st 1	230	58	Duty
2. Voc Tech	1st	3309	240	On and off Duty
3. College Undergrad	5th	3323	350	Duty (When Classes are not in conflict with mission requirements)
Graduate	2d (Non-Duty)	482	80	Non-Duty
4. Foreign Lang				
Eng as a 2d Lang	1st 2	60	15	Duty
Headstart	2d	2060	515	Duty
Host Nation	6th	2000	400	Duty
5. MOS- Related Instruction	4th	4660	2975	Duty

<u>Code</u>	<u>Priority</u>	<u>No. in Category</u>	<u>Av. Qtrly. Enrollment</u>	<u>Schedule</u>
6.				
General				
Instruction	n/a	2500	250	Duty/Non-duty
7.				
Counseling	n/a	6000	2100	Duty
8.				
-Testing	n/a	2300	575	Duty
-MOS Lib	n/a	2600	650	Duty
-Lang Lab	n/a	1450	362	Duty

1 1st priority for individuals with English reading deficiency.

2 1st priority for individuals whose basic language is not English.

BERLIN

SECTION C.

QUARTERLY PARTICIPATION RATES

PROGRAM CODE	1st QTR		2d QTR		3d QTR		4th QTR	
	<u>#Participation</u>		<u>#Participation</u>		<u>#Participation</u>		<u>#Participation</u>	
	<u>MIL</u>	<u>CIV</u>	<u>MIL</u>	<u>CIV</u>	<u>MIL</u>	<u>CIV</u>	<u>MIL</u>	<u>CIV</u>
1. HIGH SCHOOL								
-Remedial								
Reading	50	0	60	0	70	0	50	0
-PREP	70	10	90	10	110	10	90	10
2. VOCATIONAL								
TECHNICAL	220	30	220	30	220	30	220	30
3. COLLEGE								
-Undergrad	280	90	225	80	280	90	225	80
-Graduate	80	25	80	25	80	25	80	25
4. FOREIGN LANG								
-Eng. as a 2d	15	1	15	1	15	1	15	1
-Headstart	450	0	580	0	580	0	450	0
-Host Nation								
Lang Training	400	160	400	160	400	160	400	160
5. MOS-Related								
Instruction	2500	0	3500	0	3400	0	2500	0
6. GENERAL								
INSTRUCTION	260	180	240	140	260	180	240	140
7. COUNSELING	2100	250	2100	250	2100	250	2100	250
8. LEARNING								
SUPPORT								
-Testing	510	50	550	50	680	60	560	40
-MOS Lib	350	0	970	0	680	0	600	0
-Lang Lab	290	250	420	300	480	280	260	280

BERLIN

SECTION D.

PROJECTED ENROLLMENTS

<u>PROGRAM CODE</u>	<u>MILITARY</u>	<u>CIVILIAN</u>
1. HS PREP	720	80
Remedial Reading	232	0
2. Vocational Technical	1350	120
3. College		
-Undergraduate	1410	680
-Graduate	480	200
4. Foreign Language		
-English as a Second Language	60	4
-Headstart	2060	0
-Host Nation Language Training	1800	960
5. MOS-Related Instruction	11900	0
6. General Instruction	1000	640
7. Counseling	10000	2000
8. Learning Support		
-Testing	4600	260
-MOS Lib	2600	0
-Lang Lab	2900	1590

CHAPTER NUMBER SEVEN

THE U.S. ARMY SOUTHERN EUROPEAN TASK FORCE COMMAND

EDUCATION SERVICES PLAN



DEPARTMENT OF THE ARMY
HEADQUARTERS, UNITED STATES ARMY, SOUTHERN EUROPEAN TASK FORCE
OFFICE OF THE DEPUTY COMMANDER
APO 09168

AESE-GCT-T

SUBJECT: Educational Services Plan (ESP)

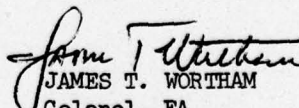
16 AUG 1974

Commander in Chief
United States Army, Europe and Seventh Army
ATTN: AEAGC-GED
APO 09403

1. Reference: CINCUSAREUR message AEAGC-GED 051502Z, Aug 74, subject: USAREUR Educational Services Plan Format.
2. The USASETAF Educational Services Plan, Parts I and II, is submitted in accordance with reference above. Statistical data is based entirely on historical records and personnel expertise and, though not all inclusive, it represents a trend favoring the continuing expansion of educational services throughout this command.
3. Educational support personnel located in Vicenza, Italy and in our seven sub-centers located throughout southern Europe will continuously monitor the program outlined in the ESP. Every effort will be made by commanders, staff and education personnel to stay abreast of the changing needs of this command. Periodic updating of our ESP will reflect our determination to develop and maintain a viable and beneficial program of educational services.
4. Headquarters, USASETAF strongly supports the education programs as outlined in the Educational Services Plan.

FOR THE COMMANDER:

1 Incl
as


JAMES T. WORTHAM
Colonel, FA
Deputy Commander

Tel: VI 8069/7246 (634-)

PART I

US ARMY SOUTHERN EUROPEAN TASK FORCE (USASETAF)

COMMAND EDUCATION NEEDS

SECTION A. INTRODUCTION - The SETAF sphere of responsibility for educational services covers a vast area of the Mediterranean region in Italy, Greece, and Turkey. It was formerly known as "Outlying Areas." The installations in Vicenza and Naples have many administrative headquarters troops; Darby in Leghorn consists exclusively of operational service type troops; Vicenza and the sites dependent upon it, and the sites in Greece and Turkey have exclusively combat troops. The basic needs for these areas cover all levels and types of education from Remedial Reading, English as a Second Language, High School PREP up through postgraduate studies for Masters' degrees.

SECTION B. LISTING OF EDUCATION NEEDS BY INSTRUCTIONAL PROGRAM

<u>Army Management Code Number</u>	<u>Instructional Program Description</u>	<u>Total # of Soldiers in need of this Category of Instruction</u>
P 871117.10000	High School Level Instruction	527
P 871117.20000	Vocational Instruction	3684
P 871117.30000	College Instruction	3201
P 871117.40000	Foreign Language Instruction	8160
P 871117.50000	MOS-Related Instruction	6458
P 871117.60000	General Interest Instruction	1310
P 871117.70000	Counseling	9992
P 871117.80000	Education Center Learning Support (Testing, MOS Library, Individual Learning Laboratory)	4621

SECTION C. SOURCES: These needs enumerated were obtained from the most recent educational level surveys, past participation records, and special interest surveys of Vocational Technical, Undergraduate and post graduate programs, and special requests of commanders.

SECTION D. SPECIAL NEEDS. Certain combat troops dependent upon Vicenza, Elefsis, and Cakmakli are located at considerable distances from their headquarters. They are served by traveling counselors for counseling, testing, MOS services. The troop concentrations at these sites are too small for the establishment of regular classes. In Italy and to a certain extent in Greece, personnel needing instruction in the high priority segments of the program (Remedial Reading, English as a Second Language, High School PREP) are sent to Vicenza for intensive instruction during a period of 5 weeks. It has been recommended that the same be done with similar personnel in Turkey.

PART II

US ARMY SOUTHERN EUROPEAN TASK FORCE

COMMAND EDUCATION PROGRAM

SECTION A - PROGRAM DESCRIPTION

<u>Program</u>	<u>Narrative Description</u>	<u>Projected Term Schedules</u>
1. High School PREP	USDESEA high school completion program to include refresher and remedial PREP. Courses taught are English Grammar, composition literature, reading improvement, journalism, business math, general studies, Italian culture, typing I & II, business law.	<u>Leghorn</u> 9 Sep to 15 Nov 74 18 Nov to 7 Feb 75 10 Feb to 18 Apr 75 21 Apr to 29 Jun 75 <u>Vicenza</u> 12 Aug to 12 Sep 74 23 Sep to 25 Oct 74 5 Nov to 6 Dec 74 13 Jan to 14 Feb 75 24 Feb to 28 Mar 75 14 Apr to 9 May 75 19 May to 20 Jun 75 <u>Verona</u> 19 Aug to 25 Oct 74 4 Nov to 6 Dec 74 13 Jan to 28 Mar 75 14 Apr to 20 Jun 75 <u>Naples</u> 9 Sep to 8 Nov 74 6 Jan to 14 Mar 75 17 Mar to 9 May 75 12 May to 25 Jul 75
II. Vocational Programs	No programs at present. Central Texas College has been contacted regarding courses in Electronics, Automotive Maintenance and Communications.	Targeted for early 1975.
III. College Instruction		
A. Associate Programs	University of Maryland 2 yr	Term One-26 Aug to

<u>Programs</u>	<u>Narrative Description</u>	<u>Projected Term Schedules</u>
	Associate Degree programs in Business Management and Law Enforcement.	18 Oct 1974. Term Two- 28 Oct to 20 Dec 74. Term Three - 20 Jan to 14 Mar 75. Term Four- 31 Mar to 23 May 75. Term five - 2 Jun to 25 Jul 75.
B. Baccalaureate	University of Maryland General Studies program leading to BA and BS degrees.	
C. Graduate Programs	Boston University offers degree programs leading to an MA in International Relations and ED M in Education and Counseling.	First Semester- Sep to Dec 74. Second Semester- Jan to Apr 75. Third Semester- May to Jul 75.
IV. Foreign Language Instruction	Headstart Italian, Greek and Turkish. Four levels of ALM Italian as well as light levels of English as a Second Language.	Classes start every two or three weeks.
V. MOS-Related Instruction	Beginning typing, Military Correspondence, speed reading and other subjects according to local interest.	Scheduled as required in coordination with unit commanders.
VI. General Interest Instruction	According to local Interest.	Scheduled when requested by local commanders.
VII. Correspondence Study	Army Service Schools and DANTES upon individual application.	As required
VIII. Testing	DANTES (CLEP and GED), Language Proficiency Examination, College Boards, Subject Examination, Kuder Vocational Interest and the Miller Analogies Examination.	As required.

SETAF

SECTION B: PRIORITIES AND ENROLLMENT RATES FOR MILITARY PERSONNEL

<u>Code</u>	<u>Priority</u>	<u>No. in Category</u>	<u>Av. Qtrly Enrollment</u>	<u>Schedule</u>
1. HS PREP	3d	463	235	(Minimum) 50% Duty
Remed Reading	1st <u>1</u>	64	33	Duty
2. Voc Tech	4th 1st	3684	105	Duty Non-Duty
3. College Undergrad	5th	1998	541	Duty (When classes are not in conflict with mission require- ments)
Grad	2d (non- duty	1203	127	Non-duty
4. Foreign Lang				
Eng as a 2d Lang	1st <u>2</u>	87	145	Duty
Headstart	2d	2163	355	Duty
Host Nation	6th 3d	5910	636	Duty Non-duty
5. MOS- Related Instruction	4th	6458	182	Duty

<u>Code</u>	<u>Priority</u>	<u>No. in Category</u>	<u>Av. Qtrly Enrollment</u>	<u>Schedule</u>
6.				
General				
Instruction	n/a	1310	15	Duty/ Non-duty
7.				
Counseling	n/a	9992	1050	Duty
8.				
-Testing	n/a	611	516	Duty
-MOS Lib	n/a	2987	523	Duty
-Lang Lab	n/a	1023	750	Duty

1 1st priority for individuals with English reading deficiency.

2 1st priority for individuals whose basic language is not English.

SETAF

SECTION C.

QUARTERLY PARTICIPATION RATES

PROGRAM CODE	1st QTR		2d QTR		3d QTR		4th QTR	
	<u>#Participation</u>		<u>#Participation</u>		<u>#Participation</u>		<u>#Participation</u>	
	<u>MIL</u>	<u>CIV</u>	<u>MIL</u>	<u>CIV</u>	<u>MIL</u>	<u>CIV</u>	<u>MIL</u>	<u>CIV</u>
1. HIGH SCHOOL								
-Remedial	44	0	33	0	33	0	33	0
Reading	220	15	250	21	238	20	220	17
-PREP								
2. VOCATIONAL								
TECHNICAL	80	0	100	0	120	0	120	0
3. COLLEGE								
-Undergrad	555	170	520	140	560	185	530	160
-Graduate	130	45	130	45	125	40	125	40
4. FOREIGN LANG-								
-Eng. as a 2d	128	30	218	50	63	25	60	25
-Headstart	367	128	367	123	342	103	342	103
-Host Nation								
Lang Training	665	220	665	220	640	245	400	190
5. MOS-Related								
Instruction	173	5	175	0	190	5	170	0
6. GENERAL								
INSTRUCTION			20		20		20	
7. COUNSELING	1078	245	1123	295	1003	220	1003	220
8. LEARNING								
SUPPORT								
-Testing	510	103	535	103	510	103	410	103
-MOS Lib	515		525		525		525	
-Lang Lab	435	210	435	210	435	210	435	210

USASSETAF

PROJECTED ENROLLMENTS

REGIONAL CONSOLIDATION OF SITES AND AREAS OF SETAF (ANNUAL)

SECTION D.

PROGRAM CODE	Vicenza		Leghorn		Naples		Elefsis		Cakmakly		Sinep		Total	
	MIL	CIV	MIL	CIV	MIL	CIV	MIL	CIV	MIL	CIV	MIL	CIV	MIL	CIV
1. HIGH SCHOOL														
-Remedial	88	-	5	-	-	-	6	-	3	-	20	-	132	-
Reading	600	40	150	7	100	26	15	-	13	-	60	-	938	73
-PREP														
2. Voc Tech	240	-	100	-	-	-	80	-	-	-	-	-	420	-
3. COLLEGE														
-Undergrad	720	100	380	120	825	275	80	20	80	20	80	20	2165	535
-Graduate	140	60	80	40	209	70	-	-	-	-	-	-	510	170
4. FOREIGN LANG														
-Eng. as 2d Lang	36	-	10	-	410	130	16	-	-	-	9	-	581	130
-Headstart	600	200	240	40	150	80	300	105	48	12	80	20	1418	457
-Host Nation														
Training	1200	200	200	160	775	400	200	100	100	-	70	15	2545	875
5. MOS-Related	500	-	80	-	18	10	60	-	30	-	40	-	728	10
6. General														
Interest	-	-	60	-	-	-	-	-	-	-	-	-	60	-
7. Counseling	1200	200	735	-	1300	600	440	80	344	40	180	60	4199	980
8. Testing	1400	200	240	12	425	200	-	-	-	-	-	-	2065	412
MOS Lib	1000	-	-	-	390	-	400	-	140	-	160	-	2090	-
Lang Lab	1400	40	-	-	1600	800	-	-	-	-	-	-	3000	840

CHAPTER NUMBER EIGHT

THE NATO/SHAPE SUPPORT GROUP COMMAND

EDUCATION SERVICES PLAN



DEPARTMENT OF THE ARMY

Headquarters, NATO/SHAPE Support Gp (US)
APO New York 09088

AEUSG-SPO-ED

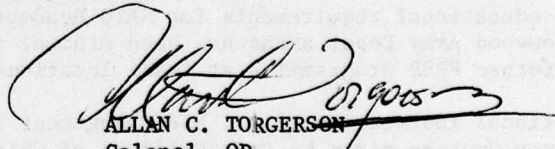
14 August 1974

SUBJECT: Parts I and II of FY 75-76 Educational Services Plan
(ESP) (RCS: AEAGC-336)

Commander in Chief
USAREUR and Seventh Army
ATTN: AEAGC-GED
APO 09403

1. NSSG (US) is giving education and the GED program a high priority in accordance with CINCUSAREUR guidance and within current resources. Cooperation between civilian Education Services Officers and appropriate commanders and staff officers is at a high level and continued improvement in educational services is our goal.
2. Enclosed are Parts I and II of the Educational Services Plan for the four communities in the NSSG (US) GED Region. The NSSG (US) GED Regional consolidation is also enclosed.

5 Incl


ALLAN C. TORGERSON
Colonel, OD
Commanding

PART I

NATO SHAPE SUPPORT GROUP COMMAND EDUCATION NEEDS

SECTION A - INTRODUCTION - NATO/SHAPE Support Group (US) has Educational Programs in support of US Army, Air Force and Navy personnel at NATO, SHAPE, and AFCENT Headquarters. Educational program authority covers the BENELUX countries and extends also to US Army personnel stationed at Burtonwood Army Depot, United Kingdom, and to those stationed in Oslo, Norway, for lesser educational services. The total international military population served is approximately 8,000 of which approximately 700 are under USAREUR command. The authority for NATO/SHAPE Support Group (US) to provide educational services to all US Forces assigned in the BENELUX is DOD Instruction 5105.20, EUCOM Directive 66-8, and USAREUR Regulation 700-26.

The military population at SHAPE, NATO and AFCENT Headquarters is characterized by a high level of professional training, excellent educational backgrounds, and strong personal motivation in all grades. The generally high education levels keep participation in the PREP Program at a low level. At the present time, there is a PREP Program only at the SHAPE Education Center. There is a small requirement for PREP training at AFCENT Headquarters. Nearby, US Army units in the Federal Republic of Germany also have a PREP requirement. A PREP Program should be approved at AFCENT Headquarters to support all requirements in this area. A request for AFCENT SUPACT (US) to offer educational services to specific units in western FRG has been submitted for consideration. This list may be expanded in the future. High school PREP educational requirements for NATO Headquarters in the Brussels and Burtonwood Army Depot areas has been minimal in the past. No request for future PREP programming at these locations is planned.

Vocational instruction (i.e., Mid Management for NCO's and Computer Science Courses given by City Colleges of Chicago) is in demand at all centers in the BENELUX. The College Degree Programs, Undergraduate and Graduate, given by University of Maryland, University of Southern California, Boston University, and University of Oklahoma are very active. The College Degree Graduate Programs of the University of Maryland are also popular in Norway and the United Kingdom.

SECTION B - LISTING OF EDUCATION NEEDS BY INSTRUCTIONAL PROGRAM

<u>Army Management Code Number</u>	<u>Instructional Program Description</u>	<u>USAREUR Military Personnel in need of this category of Instruction (Estimate)</u>
P.871117.10000	High School Level Instruction (.1)	47
P.871117.20000	Vocational Instruction (.2)	147
P.871117.30000	College Instruction	218
P.871117.40000	Foreign Language Instruction (.4)	625
P.871117.50000	MOS-Related Instruction (.5)	412
P.871117.60000	General Interest Instruction (.6)	265
P.871117.70000	Counseling (.7)	588
P.871117.80000	Education Center Learning Support (Testing, MOS Library, Individual Learning Laboratory) (.8)	647

NOTE: USAREUR military personnel only are included in this section.
USAREUR personnel represent a minority of those served (See Section A,
Introduction, and Section C.)

SECTION C - SOURCES - Needs estimated in Section B are USAREUR personnel
estimates only and do not reflect estimates of the total military
population served in the NSSG (US) Region. USAREUR personnel support
figures are developed from Education surveys and updated from personnel
counseling records.

Total NSSG (US) Educational Services personnel needs are:

	<u>PROPOSED</u>		<u>CURRENT</u>	
Region Office	1 DAC	2 LN	1 DAC	3 LN
SHAPE Ed Center	4 DAC*	3 LN	3 DAC	2 LN 2 contr
AFCENT SUPACT Cent	4 DAC*	1 LN	1 DAC	1 LN** 1 contr
Brussels SUPACT Cen	1 DAC*	-		1 contr
Burtonwood Center	1 DAC*	-		1 contr
TOTAL	11 DAC	6 LN	5 DAC	6 LN 5 contr

* These Figures are totals. Subsequent to 31 October 1974, NSSG (US) requires 6 additional DAC spaces authorizations.

a. Two will be used to replace the 3 contract GED counselors who were contracted to work 39 hours per week at the SHAPE Education Center.

b. Two DAC spaces authorizations will be used to replace one 39 hour/week contract counselor at the AFCENT Center and one secretarial type position to keep educational records and do other secretarial/educational type duties previously performed by a contractor.

c. Brussels and Burtonwood will require one DAC space authorization for each or authority to utilize the services of contract counselors (see Section D for Exception to policy request).

** Reference USAREUR Utilization Survey, AFCENT SUPACT (US), conducted May-June 1972.

SECTION D - SPECIAL NEEDS - Request an exception to Policy for not utilizing contract counselors at Burtonwood Army Depot. The present part-time DAC will leave early in FY 75. Due to the small size of the program and the scarcity of qualified personnel in the 1710 career field, a part-time contractor is the best solution for both maintaining the Army Education Program at Burtonwood and monitoring the Army Tuition Assistance Program throughout the United Kingdom.

Also, request an exception to Policy for not utilizing contract counselors at the Brussels Education Center. The program requirements in the Brussels area are comprehensive and warrant either a full time DAC or a highly qualified contract counselor. 59 hours per week of contract counselor time has been the requirement in the past. The counseling services in the Brussels area cannot be effectively accomplished except on a daily basis as a primary duty by a counselor located at Brussels.

PART II

NATO/SHAPE SUPPORT GROUP COMMAND EDUCATION PROGRAM

SECTION A - PROGRAM DESCRIPTION

<u>Program</u>	<u>Narrative Description</u>	<u>Projected Term Schedules</u>
I. High School PREP	USDESEA operates small programs at SHAPE. Courses stressed are: language, arts, civics, general and consumer math, general science. Courses last 8 weeks and students usually attend 20 hours per week. Authority to initiate a small PREP at AFCENT has been requested.	25 Jun 74 - 27 Aug 74 3 Sep 74 - 6 Nov 74 12 Nov 74 - 28 Jan 75 10 Feb 75 - 4 Apr 75 14 Apr 75 - 15 Jun 75 23 Jun 75 - 15 Aug 75 Schedule pending USAREUR approval.
II. Vocational Programs	City Colleges of Chicago (CCC) offers a Certificate in DATA Processing. Real Estate program in Brussels and SHAPE. CCC offers a Certificate in Mid Management at Rotterdam/Holland (sub-center of AFCENT).	26 Aug 74 - 18 Oct 74 28 Oct 74 - 20 Dec 74 20 Jan 75 - 14 Mar 75 31 Mar 75 - 23 May 75 2 Jun 75 - 25 Jul 75
III. College Instruction		
A. Associate Programs	All City Colleges of Chicago Certificate Programs listed above offer the possibility of an AA Degree in conjunction with the University of Maryland or any accredited institution from which the applicant has earned or will earn certain liberal arts credits.	Same schedule as in Para 2.

<u>Program</u>	<u>Narative Description</u>	<u>Projected Term Schedules</u>
	The University of Maryland offers general education programs at all centers in the NSSG (US) Region. The military student can earn an academic AA Degree at any of these centers.	Same schedule as in Para 2.
B. Baccalaureate	The University of Maryland courses at all centers in the Region lead toward the baccalaureate. Except for the program at Burtonwood, England, it is possible to complete a baccalaureate degree "on post" in all Education Centers in the Region.	
C. Graduate Programs	Boston University offers a Master of Arts in International Relations at SHAPE.	16 Sep 74 - 20 Dec 74 13 Jan 75 - 25 Apr 75 19 May 75 - 4 Jul 75
	University of Southern California offers a Master of Science in Education at SHAPE, Brussels, and AFCENT.	23 Jun 74 - 15 Aug 74 9 Sep 74 - 1 Nov 74 11 Nov 74 - 17 Jan 75 3 Feb 75 - 28 Mar 75 14 Apr 75 - 6 Jun 75
	University of Oklahoma offers a Masters of Arts in Public Administration at AFCENT. Students take one or two seminar courses per trimester.	1 May 75 - 31 Aug 75 1 Sep 74 - 31 Dec 74 1 Jan 75 - 30 Apr 75 1 May 75 - 31 Aug 75 2 seminar type courses per trimester.
IV. Foreign Language Program	French Headstart and Gateway to French at NATO and SHAPE. Dutch Headstart at AFCENT.	3 twenty hour Headstart courses per quarter 10 forty hour conversational (Gateway) courses per quarter.
	All languages in language laboratories at NATO and NICSMA (Brussels)	Open enrollment

<u>Program</u>	<u>Narrative Description</u>	<u>Projected Term Schedules</u>
	Voluntary participation in introduction to Spoken German in United Kingdom (Personnel go frequently to Zweibruecken).	1 twenty hour course per quarter.
V. MOS-Related	Classes organized at AFCENT in coordination with Operation's Officer to insure that every enlisted man prepares in a formal class for his PMOS test.	Determined by Command. Free instruction.
	Courses in Reading Improvement at SHAPE	1 fifteen hour course per quarter
	Typing, Auto Mechanics, Basic Math, Carpentry, Slide Rule, Electricity.	
VI. General Interest Instruction	Certain of the MOS courses when taken for personal interest reasons (i.e., high ranking officers taking carpentry fall in this category, but are included in paragraph 5).	
VII. Correspondence Study	All Army Extension courses through DANTE when operational.	Open enrollment
VIII. Testing	CLEP, all national qualifications graduate level tests (i.e., GRE, ATGSB, etc). Anticipate full DANTE test program. Full PMOS testing at AFCENT.	Open participation except PMOS which is set by DA

NATO/SHAPE

SECTION B. PRIORITIES AND ENROLLMENT RATES FOR MILITARY PERSONNEL

<u>Code</u>	<u>Priority</u>	<u>No. in Category</u>	<u>Av. Qtrly Enrollment</u>	<u>Schedule</u>
1. HS PREP	3d	89	71	(Minimum) 50% Duty
Remedial Reading	1st <u>1</u>	18	14	Duty
2. Voc	4th			Duty
Tech	1st	147	50	Non-duty
3. College -Undergrad	5th	218	295	Duty (When classes are not in conflict with mission require- ments)
-Graduate	2d (non- duty)	124	83	Non-duty
4. Foreign Lang				
Eng as a 2d Lang	1st <u>2</u>	1	-	Duty
Headstart	2d	209	78	Duty
Host Nation	6th 3d	415	126	Duty Non-duty
5. MOS- Related Instruction	4th	412	303	Duty

<u>Code</u>	<u>Priority</u>	<u>No. in Category</u>	<u>Av. Qtrly Enrollment</u>	<u>Schedule</u>
6. General Instruction	n/a	265	87	Duty/ Non-duty
7. Counseling	n/a	588	881	Duty
8. Learning Support				
-Testing	n/a	647	603	Duty
-MOS Lib	n/a	647	364	Duty
-Lang Lab	n/a	647	13	Duty

1 1st priority for individuals with English reading deficiency.

2 1st priority for individuals whose basic language is not English.

NATO/SHAPE

SECTION C. QUARTERLY PARTICIPATION RATES

PROGRAM CODE	1st QTR		2d QTR		3d QTR		4th QTR	
	<u>#Participation</u>		<u>#Participation</u>		<u>#Participation</u>		<u>#Participation</u>	
	<u>MIL</u>	<u>CIV</u>	<u>MIL</u>	<u>CIV</u>	<u>MIL</u>	<u>CIV</u>	<u>MIL</u>	<u>CIV</u>
1. HS PREP	29	2	50	8	60	10	67	11
Remedial Reading	13	0	17	2	14	3	11	5
2. Voc-Tech	60	30	44	26	43	25	52	27
3. College								
-Undergrad	223	101	256	118	253	88	326	115
-Graduate	64	42	71	36	71	36	67	41
4. Foreign Lang								
-Eng as a 2d Lang	1	0	0	0	0	0	0	0
Headstart	55	10	75	15	91	19	76	19
-Host Nation Lang Training	99	80	110	95	189	122	92	64
5. MOS- Related Instruction	260	23	335	30	330	34	307	28
6. General Instruction	48	8	120	48	89	37	92	37
7. Counseling	892	345	863	408	884	415	841	418