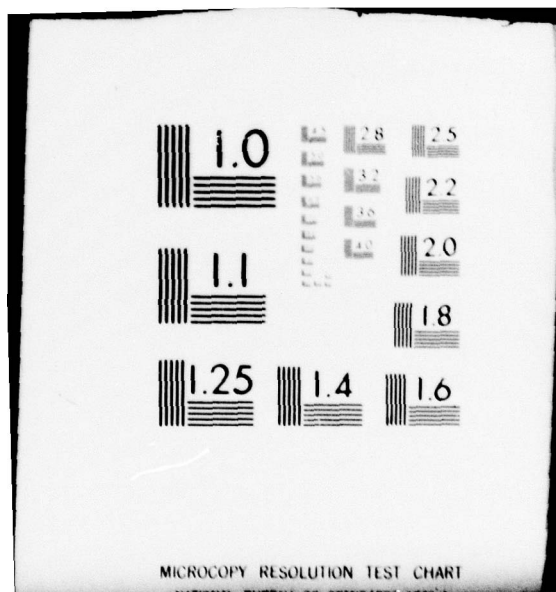


AD-A076 829 SPRINGFIELD ARMORY MA F/G 19/6
NOTES ON DEVELOPMENT TYPE MATERIEL FOR RIFLE, CALIBER 7.62MM, T--ETC(U)
MAR 58 C F PACKARD
UNCLASSIFIED SA-NM11-2617 NL

| OF |
AD
A076829





AD A 076829

DDC FILE COPY

SPRINGFIELD ARMORY

RESEARCH AND DEVELOPMENT

ORD
mar 58

LEVEL

Ord Project: TS2-2015

Report: SA-NM11-2617

DA Project: 502-08-006

Date: 27 March 1958

Report Title: Notes on Development Type Materiel for Rifle,
Caliber 7.62MM, T44E5 (M15),

Author:

C. F. Packard
C. F. PACKARD
Head, Rifle Sect
Weapons Dev Br

Approved:

H. F. Hawthorne
H. F. HAWTHORNE
Chief, Res & Dev Div

These Notes have been prepared under the direction
of the Office, Chief of Ordnance

DDC
RECEIVED
NOV 16 1979
A

U. S. ARMY INFANTRY
HUMAN RESEARCH UNIT

AUG 7 1961

Box 2086,
Ft. Benning, Ga.

DISTRIBUTION STATEMENT A

Approved for public release;
Distribution Unlimited

SPRINGFIELD, MASSACHUSETTS



DEPARTMENT OF THE ARMY
ARI FIELD UNIT, BENNING
U. S. ARMY RESEARCH INSTITUTE FOR THE BEHAVIORAL AND SOCIAL SCIENCES
P O BOX 2086 FORT BENNING, GEORGIA 31905

PER1-1J

8 August 1979

SUBJECT: Shipment of Documents

Defense Documentation Center
Cameron Station
Alexandria, VA 22314
ATTN: Selection & Cataloging

The Documents in these shipments are approved for public release. The distribution is unlimited.

FOR THE CHIEF:

A large, stylized handwritten signature in black ink, appearing to read "Alexander Nicolini".

ALEXANDER NICOLINI
Major, Infantry
R&D Coordinator

DISCLAIMER NOTICE

**THIS DOCUMENT IS BEST QUALITY
PRACTICABLE. THE COPY FURNISHED
TO DDC CONTAINED A SIGNIFICANT
NUMBER OF PAGES WHICH DO NOT
REPRODUCE LEGIBLY.**

12 48

14

Report: SA-NM11-2617

Date: 11 27 Mar 1958

6
Report Title: Notes on Development Type Materiel for Rifle, Caliber 7.62MM,
T44E5 (M15)

10
Author: C. F. BACKARD
Head, Rifle Sect
Weapons Dev Br

Approved:

H. F. HAWTHORNE
Chief, Res & Dev Div

Project Title: Rifles, Shoulder-fired, Infantry Types (Lightweight
Development)

Ord Project: TS2-2015

DA Project: 502-08-006

Preparing Agency: Springfield Armory, Springfield, Mass.

This report does not contain any copyright matter.

Initial distribution of this report has been made in accordance with the attached distribution list. Requests for additional copies will be made direct to the Commanding Officer, Diamond Ordnance Fuse Laboratories, Washington 25, D. C., ATTN: Technical Reference Section, ORDTL 06.33.

Prepared for Publication by: United Engineers, Inc.
Contract DA 19-059-ORD-2555

331 450

slb

CONTENTS

	<u>Page</u>
Section I. Introduction	4
II. General Description	5
III. General Data	7
IV. Operation	8
1. Application of Safety	8
2. Loading of Rifle	8
3. Semiautomatic Fire	8
4. Full Automatic Fire	8
5. Bolt Lock	9
6. Unloading of Rifle	9
V. Functioning	10
1. Operational System	10
2. Semiautomatic Fire	10
a. Recoil Movement	10
b. Counterrecoil Movement	10
3. Full Automatic Fire	11
a. Recoil Movement	11
b. Counterrecoil Movement	11
VI. Disassembly of Rifle	12
1. General Disassembly (Field-stripping)	12
2. Bolt Group	13
3. Barrel and Receiver Group	13
4. Trigger Group	14
5. Stock Group	15
6. Magazine Group	15
VII. Assembly of Rifle	16

REPORT
SA-NM11-2617

CONTENTS - Continued

	<u>Page</u>
Section VIII. Accessories	18
1. Charger, Magazine, T16	18
2. Trigger, Winter, Auxiliary, T6	18
IX. Service and Maintenance	19
1. Cleaning and Lubrication	19
2. Tools	19
X. Distribution	20
 APPENDIX A - List of Parts	 23
APPENDIX B - Photographs (8)	28
APPENDIX C - Figures (5)	29

Accession For	
NTIS GRA&I	<input checked="checked" type="checkbox"/>
DDC TAB	<input type="checkbox"/>
Unannounced	<input type="checkbox"/>
Justification	
By _____	
Distributor/ _____	
Availability Codes	
Dist	Avail and/or special
A23	

REPORT
SA-NM11-2617

SECTION I. INTRODUCTION

✓ This report is directed to personnel charged with the use, care, and maintenance of the Caliber 7.62mm T44E5 (M15) Rifle. The subject rifle is a heavy barrel version of the Caliber 7.62mm T44E4 (M14) Rifle, designed to permit sustained full automatic fire.

REPORT
SA-NM11-2617

SECTION II. GENERAL DESCRIPTION

The caliber 7.62mm, T44E5 (M15) rifle is a heavy barreled, air-cooled, gas-operated, magazine-fed, shoulder weapon, designed for selective semiautomatic or full automatic fire. In principle of operation, it is similar to the M1 rifle. The T44E5 is chambered for the NATO caliber 7.62mm cartridge, and a 20-round box magazine has been added.

The operational mechanism of the T44E5 (M15) is identical with that of the T44E4 (M14) and is basically similar to that of the M1 rifle. The receiver, bolt, and firing pin are shorter than those components of the M1. A roller was added to the bolt stud in order to reduce friction at the operating rod cam surface during locking and unlocking of the bolt. The trigger subassembly is basically the same as that of the M1, but the trigger housing floor plate was cut back to allow for insertion of the magazine. The magazine latch is located in a recess in the forward face of the trigger housing.

The bolt lock is mounted on the left side of the receiver.

The rear sight group, mounted on the receiver, is composed of M1 rifle parts.

The sear release, selector shaft, and connector assembly, mounted on the right side of the receiver and positioned by the selector lock, are inoperative during semiautomatic firing.

The operating rod is a welded assembly, composed of a handle and a capped short tube. This tube houses the operating rod spring and the operating rod spring guide. The rear end of the operating rod spring guide serves as a front latch for the box magazine and is attached to the receiver by the connector lock. The operating rod tube slides in the operating rod guide which is pinned to the barrel. The end of the operating rod tube abuts the gas piston when the operating rod is in its forward position.

REPORT
SA-NM11-2617

SECTION II. GENERAL DESCRIPTION - Continued

The gas cylinder, unlike that of the M1 rifle, contains a hollow gas piston and is mounted on the barrel with the gas port located approximately eight inches from the muzzle. The gas cylinder positions the front band against a shoulder on the barrel and is locked in place by the looped gas cylinder lock and gas cylinder plug. The wooden hand guard is secured to the barrel by the front and rear bands.

The flash suppressor is held in place on the barrel by the flash suppressor nut which is locked by a socket setscrew. The flash suppressor is of the five-pronged type with a closed front end. The wide lower prong provides moderate compensation for muzzle climb.

The front sight is mounted on the flash suppressor.

The barrel and receiver group is bedded in a conventional drop stock. The butt plate assembly is similar to the B.A.R. butt plate design in providing a hinged shoulder rest. The butt swivel, attached to the stock, is an M1 rifle component. The bracket of the front swivel assembly is riveted to the forearm of the stock. The receiver well opening and the recoil abutments in the stock are reinforced by the stock liner which is attached to the stock by two stock liner screws. The stock is locked to the barrel and receiver group by the trigger group.

The bipod is attached to the flash suppressor by a sleeve type mount and spring loaded retainer latch to provide both positive retention and ready removal. The bipod legs are adjustable for height and may be folded rearward to rest against the underside of the stock.

REPORT
SA-NM11-2617

SECTION III. GENERAL DATA

Weight of basic rifle (with empty magazine, less sling)	13.7 lb.
Weight of rifle, ready to fire (fully loaded with sling)	15.0 lb.
Length of rifle (with hinged butt plate folded)	45.30 in.
Length of rifle (with hinged butt plate extended)	47.34 in.
Length of barrel	22.0 in.
Rifling, four grooves, right-hand twist	12.0 in.
Sight radius (at 100 yds.)	25.87 in.
Type of mechanism	rotating bolt
Method of actuation	gas-operated
Loading device	10-round charger
Cyclic rate	725 r.p.m.
Cooling	air
Trigger pull, maximum	7.5 lb.
minimum	5.5 lb.
Muzzle velocity	2800 f.p.s.
Magazine capacity	20 rd.
Chamber pressure, maximum	50,000 p.s.i.
Ammunition types	Ball, A.P., tracer
Cartridge, ball type	caliber 7.62 mm., M59
Maximum range	3500 yd.

REPORT
SA-NM11-2617

SECTION IV. OPERATION

1. Application of Safety.

Place the safety in the SAFE position by cocking the hammer and snapping the safety rearward.

2. Loading of Rifle.

a. Place the safety in the SAFE position.

b. Insert a loaded magazine into the magazine well, front end leading, until the front catch snaps into engagement; then pull backward and upward until the magazine latch snaps into position.

c. Pull the operating rod handle to its rearmost position and release; this allows the top round to rise and the bolt to move forward, thus stripping and chambering a round from the magazine.

3. Semiautomatic Fire.

a. Press in and turn the selector until it snaps into position with its blank face to the rear and its projection downward. The connector assembly is inoperative in this position since the connector is held forward and out of engagement with the operating rod.

b. Load the rifle and release the safety. The rifle will now fire one round upon each pull of the trigger.

4. Full Automatic Fire.

a. Press in and turn the selector until it snaps into position with the face marked "A" to the rear and the projection upward. This rotation of the eccentric selector shaft moves the sear release to the rear into contact with the sear and moves the connector assembly rearward into contact with the operating rod.

REPORT
SA-NM11-2617

SECTION IV. OPERATION - Continued

b. Load the rifle and release the safety.

c. Pull and hold the trigger. The rifle will fire automatically as long as the trigger is squeezed and there is ammunition in the magazine. To cease firing, release the trigger.

5. Bolt Lock.

When the last round of ammunition is fired, the magazine follower engages the bolt lock and raises it into the path of the retracted bolt; this holds the bolt in the OPEN position.

6. Unloading of Rifle.

a. Place the safety in the SAFE position.

b. Grasp the magazine, placing the thumb on the magazine latch, and squeeze the latch. Push the magazine forward and downward to disengage it from the front catch and remove the magazine from the magazine well.

c. Pull the operating handle rearward to extract and eject a chambered round, and to inspect the chamber. The rifle is now clear.

REPORT
SA-NM11-2617

SECTION V. FUNCTIONING

1. Operational System.

Operational power is derived from a gas cutoff and expansion system. In this system, gas is bled from the barrel through a port in its underside which registers with a port in the rear loop of the gas cylinder and a port in the wall of the hollow gas piston. Propellant gases, released by firing, enter these ports and are trapped in the hollow chambers in the gas piston and gas cylinder. The piston, in contact with the operating rod, is driven rearward a complete stroke (one and one-half inches). The resultant force is of sufficient magnitude to drive the operating rod and the bolt to their rearmost positions, and to compress the operating rod spring. The exhaust port in the bottom of the gas cylinder is uncovered as the gas piston nears the end of its stroke; this allows the expanded gases to escape.

The reaction of the operating rod spring now returns the bolt and operating rod to their original positions.

The gas system functions in the same manner for all firing cycles.

2. Semiautomatic Fire.

a. Recoil Movement.

During its rearward travel, the operating rod unlocks and carries the bolt assembly rearward; this action extracts and ejects the fired cartridge case, and cocks the hammer. Ammunition is lifted into the path of the retracted bolt by action of the magazine spring and follower.

b. Counterrecoil Movement.

The operating rod moves forward under spring pressure; this carries the bolt assembly forward, stripping the top round from the magazine, chambering the round, and locking the bolt in battery position.

REPORT
SA-NM11-2617

SECTION V. FUNCTIONING - Continued

3. Full Automatic Fire.

a. Recoil Movement.

- (1) After approximately one-eighth inch of rearward travel, the operating rod disengages from the hook on the connector assembly. This allows the spring-loaded connector assembly to move rearward and to rotate the sear release out of engagement with the sear.
- (2) With the trigger held back, the sear engages the hammer.

b. Counterrecoil Movement.

- (1) As the operating rod moves forward, the hammer remains in the cocked position until the shoulder on the operating rod engages the hook on the connector assembly. Further travel of the operating rod moves the connector assembly forward, rotates the sear release against the sear, and disengages it from the hammer. This disengagement allows the hammer to fall and to fire the chambered cartridge.
- (2) Because the firing pin is prevented from moving forward prematurely by the bridge in the receiver, the weapon cannot be fired until the bolt is locked (or driven into the locked position by action of the nose of the hammer against the cam on the rear end of the bolt).
- (3) If the trigger is released at any time prior to the firing of the last round, the hammer will be held in the cocked position by the trigger lugs (secondary sear) and automatic actuation of the sear release by the connector assembly will not release the hammer to fire the chambered cartridge.

REPORT
SA-NM11-2617

SECTION VI. DISASSEMBLY OF RIFLE

1. General Disassembly (Field-stripping).

a. Unload the rifle, remove the magazine, and place the safety in the SAFE position. Remove the bipod by pressing the latch on the underside of the bipod head toward the left and slide the bipod assembly forward off of the flash suppressor.

b. Turn the rifle upside down with the muzzle pointing to the left.

c. Insert the nose of a cartridge into the hole in the trigger guard and pry upward to unlatch the trigger guard.

d. Swing the trigger guard upward and lift the trigger group from the stock.

e. Separate the stock from the rifle by cradling the receiver firmly in one hand and by striking upward sharply on the stock butt with the palm of the other hand.

f. Turn the barrel and receiver group on its side with the connector assembly upward. (Press in and turn the selector until the face marked "A" is toward the rear sight knob and the projection forward.) Press forward on the connector with the right thumb until the forward end can be lifted off the connector lock. Rotate the connector, clockwise, until the slot at the rear end is aligned with the elongated stud on the sear release. Lower slightly the front end of the connector and lift it from the sear release.

NOTE: The connector assembly is a semipermanent assembly and it should not be disassembled.

g. With the barrel and receiver group upside down, pull forward on the operating rod spring, relieving pressure on the connector lock. Pull the lock outward, disconnect the operating rod spring guide, and remove the spring guide and spring. Turn the barrel and receiver group right side up.

REPORT
SA-NM11-2617

SECTION VI. DISASSEMBLY OF RIFLE - Continued

h. Retract the operating rod until the key on its lower surface coincides with the dismount notch in the receiver. Lift the operating rod free and pull to the rear, disengaging it from the operating rod guide.

i. Grasp the bolt group by the roller and, while sliding it forward, lift it upward and outward to the right front with a slight rotating motion. The rifle is now field-stripped, and basic assemblies such as the bolt and the trigger groups may be disassembled, if required.

2. Bolt Group.

With the bolt in the left hand and the thumb over the ejector, insert the blade of a screw driver between the extractor and the lower cartridge seat flange. Pry the extractor upward to unseat it. The ejector will snap out against the thumb. Lift out the ejector assembly, and the extractor plunger and spring. Remove the firing pin from the rear of the bolt.

NOTE: No attempt should be made to disassemble the roller from the bolt stud.

3. Barrel and Receiver Group.

a. Disassemble the rear sight as follows: Run the aperture all the way down and record the reading for use in re-assembling the sight. Hold the elevating knob and unscrew the nut in the center of the windage knob. Withdraw the elevating knob. Unscrew and remove the windage knob. Pull the aperture up about one-half inch. Place the thumb under the aperture and push upward and forward to remove the aperture, cover and base. Separate the rear sight cover from the rear sight base.

b. Loosen the setscrew in the lower left side of the flash suppressor. Unscrew the flash suppressor nut and slide the flash suppressor forward off the barrel.

REPORT
SA-NM11-2617

SECTION VI. DISASSEMBLY OF RIFLE - Continued

c. Loosen and remove the gas plug, using the gas cylinder plug wrench. Tilt the muzzle down and remove the gas piston from the gas cylinder. Unscrew the gas cylinder lock and slide the lock and the gas cylinder off the barrel.

d. Slip the front band off the barrel. Push the hand guard forward and lift it from the barrel.

NOTE: The bolt lock, charger guide, operating rod guide, and sear release with selector are semipermanent assemblies held together by spring pins. These pins must be driven out with appropriate drift punches to disassemble these parts.

4. Trigger Group.

a. To disassemble the trigger group, close and latch the trigger guard. Squeeze the trigger, allowing the hammer to go forward. Hold the trigger housing group with the first finger of the right hand on the trigger and the thumb against the sear. Place the front of the trigger housing against a firm surface. Squeeze the trigger with the finger and push forward on the sear with the thumb. At the same time, using the tip of a cartridge, push out the trigger pin from left to right. Slowly release the pressure with the finger and thumb; this allows the hammer spring to expand.

b. Lift out the trigger assembly. Remove and separate the hammer spring plunger, hammer spring, and the hammer spring housing.

c. Push out the hammer pin from left to right, using the tip of a cartridge. Move the hammer slightly to the rear and lift out.

REPORT
SA-NM11-2617

SECTION VI. DISASSEMBLY OF RIFLE - Continued

d. Unlatch the trigger guard. Push out the stud of the safety from its hole. Remove the safety and safety spring. Slide the trigger guard to the rear until the wings of the trigger guard are aligned with the safety stud hole. Rotate the trigger guard to the right and upward until the hammer stop clears the base of the housing. Remove the trigger guard.

e. Drive out the magazine latch spring pin with a suitable drift to remove the semipermanently assembled magazine latch and spring.

5. Stock Group.

a. Disassemble the butt plate assembly and butt swivel from the stock by removing the butt plate screws.

b. Remove the stock liner by unscrewing the stock liner screws, using a suitable spanner wrench. Press the heavy vertical bars at the rear of the liner together and push the liner out of the bottom of the stock rear end first.

NOTE: The front swivel bracket is permanently riveted to the forearm.

The stock ferrule on the front of the forearm is a semipermanent assembly and should not be disassembled.

6. Magazine Group.

a. Hold the magazine upside down and lift the skirted end of the magazine base to disengage the detent. Slide the base off the magazine tube.

CAUTION: Exercise care when removing the base because the magazine spring is under pressure.

b. Remove the magazine spring and magazine follower, and then separate them.

REPORT
SA-NM11-2617

SECTION VII. ASSEMBLY OF RIFLE

To assemble the rifle, reverse the disassembly procedure. However, the following instructions are provided to facilitate and to insure satisfactory assembly:

Hand Guard:

To assemble the hand guard, when the gas cylinder and related components are in place, position the front end of the guard in the front band and snap the rear band of the hand guard assembly into the barrel grooves.

NOTE: The hand guard need not be reassembled prior to assembly of the gas cylinder and related components.

Trigger Group.

To assemble the trigger group to the stock and receiver, cock the hammer and swing the trigger guard to the open position. Insert the assembly into the receiver, and close the trigger guard.

Gas System.

To assemble the gas system, replace front band, gas cylinder, and gas cylinder lock. Tighten the lock by hand to its full assembled position and then back off until the loop is aligned with the gas cylinder. Assemble the piston and the gas cylinder plug.

REPORT
SA-NM11-2617

SECTION VII. ASSEMBLY OF RIFLE - Continued

To prevent loosening under the vibration of firing, tighten securely each of the following components:

Nut, Flash Suppressor
Setscrew, Socket, Full Dog Point (to lock the flash
suppressor nut)
Plug, Gas Cylinder (tighten with a torque of approxi-
mately 15 ft-lb.)
Screw, Front Sight

NOTE: The reassembled rifle should be hand-operated without ammunition to check for correct assembly and for freedom of action of such components as the safety, trigger, hammer, operating rod, bolt, piston, selector, connector, bolt catch, and magazine follower. The magazine should also latch and unlatch properly.

REPORT
SA-NM11-2617

SECTION VIII. ACCESSORIES

1. Charger, Magazine, T16. (Fig. 1)

To load the rifle, retract the bolt, place safety in SAFE position, insert the magazine charger (holding ten rounds of ammunition) into the guide located in the top of the receiver, and press down on the column of cart-ridges to strip the rounds from the charger into the magazine.

2. Trigger, Winter, Auxiliary, T6. (Fig. 2)

a. To assemble the winter trigger to the trigger and trigger guard, open the trigger guard and insert the end of the trigger guard between the actuator assembly and the lever, and then between the coiled spring and the support. (The lever inclines to the rear and away from the rifle.) Swing the cylindrical section of the actuator up over the front of the trigger and close the trigger guard.

b. To disassemble the winter trigger, reverse the foregoing procedure.

NOTE: The winter trigger is designed to provide a means of firing this rifle when arctic mittens are worn.

REPORT
SA-NM11-2617

SECTION IX. SERVICE AND MAINTENANCE

1. Cleaning and Lubrication.

a. Before the rifle is fired, it should be disassembled and cleaned thoroughly; a light coat of oil should be applied to all metal parts except the bore, chamber, and other parts which come in contact with the ammunition. Particular care should be exercised to lubricate locking lugs of bolt, bolt roller, bolt guides, cocking cam on bolt, operating rod guide groove, camming surfaces of operating rod, and operating rod spring.

b. Promptly after the rifle is fired, it should be cleaned and lubricated. The bore should be swabbed with a flannel cleaning patch saturated with either bore cleaner or hot water and soap solution; it should then be brushed and dried with patches, and protective oil applied. The chamber should be cleaned with a chamber cleaning brush, wiped clean with a cloth, and oiled lightly. The piston, gas cylinder, and gas cylinder plug should be disassembled, and excess carbon deposits removed by careful scraping and cleaning with rifle bore cleaner. When all carbon has been removed, the components should be wiped dry and oiled lightly. Other metal parts should be cleaned with a dry cloth to remove dampness, dirt, and perspiration, and then oiled lightly.

2. Tools.

- a. Wrench, gas cylinder plug (Fig. 3)
- b. Allen wrench (for use with No. 6 screw)
- c. Brush, chamber cleaning
- d. Brush, cleaning, caliber .30
- e. Rod, cleaning, jointed, caliber .30, M10
- f. Screw driver
- g. Drift Punches

REPORT
SA-MH11-2617

SECTION X. DISTRIBUTION

	<u>Copies</u>
Chief of Ordnance Department of the Army Washington 25, D.C. ATTN: ORDTS (2) ORDIR (3) ORDPD (2) ORDFS (2)	9
The President, Board No. 3 United States Continental Army Command Fort Benning, Georgia	1
Commanding General United States Continental Army Command Fort Monroe, Virginia	1
Commanding Officer Diamond Ordnance Fuze Laboratories Washington 25, D.C. ATTN: Technical Reference Section ORDTL 06.33	1
Commanding Officer Springfield Armory Springfield, Massachusetts ATTN: ORDBD-TX	6
Commanding General Aberdeen Proving Ground, Maryland ATTN: Development and Proof Services (3) The Ordnance Training Command (2) The Ordnance Board (1) United States Army Ordnance Explosive Disposal Office (2)	8
Commandant The Ordnance School Aberdeen Proving Ground, Maryland	2
Commanding Officer Raritan Arsenal Metuchen, New Jersey ATTN: National Maintenance Publications Center	2

REPORT
SA-NM11-2617

SECTION X. DISTRIBUTION - Continued

	<u>Copies</u>
Commanding Officer Rossford Ordnance Depot Toledo, Ohio ATTN: ORDDW-TEM	1
Commandant United States Military Academy West Point, New York ATTN: Department of Ordnance and Gunnery	2
Commandant United States Marine Corps Washington 25, D.C. ATTN: Division of Plans and Policies	1
Commanding General Ordnance Weapons Command Rock Island, Illinois ATTN: ORDOW-TX (3) National Development (1) Industrial Engineering (1) National Maintenance (1)	6
Commanding Officer United States Army Ordnance Test Activity Yuma Test Station Yuma, Arizona	1
Commanding Officer Arctic Test Branch Fort Greeley, Alaska	1

REPORT
SA-NM11-2617

APPENDICES

APPENDIX A - List of Parts, T44E5 Rifle

APPENDIX B - Photographs (8)

APPENDIX C - Figures (5)

REPORT
SA-NM11-2617

APPENDIX A

List of parts, T44E5 (M15) Rifle*

*Figures 4 and 5

REPORT
SA-NM11-2617

APPENDIX A

LIST OF PARTS, T44E5 (M15) RIFLE

(See Fig. 4 and 5, App. C)

<u>Ordinance</u> <u>Dwg. No.</u>	<u>Components</u>	<u>Number, Spare Parts</u> <u>for Maintenance of</u> <u>100 Weapons</u>
D6008868	Aperture, Rear Sight	4
SA-C-24043	Band, Front	5
	Barrel and Receiver, Assembly (composed of)	
SA-F-34831	1 - Barrel	6
C7267028	1 - Guide, Packet Charger	2
B7267035	1 - Lock, Connector	10
B7267042	1 - Pin, Connector Lock	10
BFXS2.1 (586064)	1 - Pin, Spring	2
F7267056	1 - Receiver	
D5546001	Base, Rear Sight	2
D7267005	Bolt, Assembly (composed of)	
D7267004	1 - Bolt and Roller, Assembly (composed of)	6
F7267003	1 - Body, Bolt	
B7267059	1 - Retainer, Bolt Roller	10
B7267065	1 - Roller, Bolt	10
B7267015	1 - Ejector, Cartridge with Spring, Assembly (composed of)	12
C7267014	1 - Ejector, Cartridge	
B7267077	1 - Spring, Cartridge Ejector	
F5546003	1 - Extractor	8
C7267043	1 - Pin, Firing	20
B6008618	1 - Plunger, Extractor Spring, Assembly (composed of)	15
B5013671	1 - Plunger, Extractor Spring	
B6008886	1 - Spring, Extractor	
D7267012	Connector, Assembly (composed of)	8
D7267011	1 - Bar, Connector	
D7267024	1 - Guide, Connector Spring	
B7267050	1 - Plate, Connector	
B7267076	1 - Spring, Connector	
C6008872	Cover, Rear Sight	2
SA-C-24048	Cylinder, Gas	4

REPORT
SA-NM11-2617

LIST OF PARTS, T44E5 (M15) RIFLE - Continued

<u>Ordinance</u> <u>Dwg. No.</u>	<u>Components</u>	<u>Number, Spare Parts</u> <u>for Maintenance of</u> <u>100 Weapons</u>
	Guard, Hand and Band, Assembly (composed of)	10
B6008870	1 - Band, Rear Hand Guard	
SA-C-24050	1 - Guard, Hand	
D7267023	Guard, Trigger and Stop, Assembly (composed of)	4
D7267022	1 - Guard, Trigger	
B7312633	1 - Stop, Hammer	
SA-B-34122	Guide, Operating Rod	4
C7267027	Guide, Operating Rod Spring	10
D5546008	Hammer	4
C6008883	Housing, Hammer Spring	2
D7267031	Housing, Trigger and Latch, Assembly (composed of)	4
F7267030	1 - Housing, Trigger	
C7267032	1 - Latch, Magazine	5
BFSX2.1 (586081)	1 - Pin, Spring	9
B7267041	1 - Spring, Magazine Latch	5
D7312737	Knob, Windage, Rear Sight, Assembly (composed of)	4
D7312735	1 - Knob, Windage, Rear Sight	
C7312731	1 - Lock, Rear Sight Nut	
C7312726	1 - Nut, Rear Sight	
B7312728	1 - Retainer, Rear Sight Nut	
C7267034	Lock, Bolt	5
SA-B-24054	Lock, Gas Cylinder	4
C7267172	Lock, Selector Shaft	5
D7267038	Magazine, Assembly (composed of)	1000
C7267019	1 - Follower, Magazine and Stop, Assembly (composed of)	
D7267018	1 - Follower, Magazine	
B7267085	1 - Stop, Follower	
C7267051	1 - Plate, Magazine Floor	
C7267078	1 - Spring, Magazine	
D7267091	1 - Tube, Magazine	
SA-B-31699	Nut, Stabilizer	5

REPORT
SA-NM11-2617

LIST OF PARTS, T44E5 (M15) RIFLE - Continued

<u>Ordinance</u> <u>Dwg. No.</u>	<u>Components</u>	<u>Number, Spare Parts</u> <u>for Maintenance of</u> <u>100 Weapons</u>
B5013668	Pin, Hammer	4
BFSX2.1 (586072)	Pin, Spring	10
BFSX2.1 (586045)	Pin, Spring	2
BFSX2.1 (586070)	Pin, Spring	20
B5013669	Pin, Trigger	4
D7312738	Pinion, Elevating, Rear Sight, Assembly (composed of)	4
C7312733	1 - Dog, Indexing, Assembly (composed of)	
C7312725	1 - Dog, Indexing	
B7312729	1 - Retainer, Rear Sight Screw	
C7312730	1 - Screw, Rear Sight	2
BEAX1 (138534)	1 - Washer, Lock Tooth Type	
D7312734	1 - Knob, Elevating, Rear Sight	
D7312736	1 - Pinion, Elevating, Rear Sight	
B7312727	1 - Retainer, Dog	
D7312732	1 - Spring, Rear Sight	
D7267047	Piston	4
C7267053	Plug, Gas Cylinder	4
B6008880	Plunger, Hammer Spring	2
D7267058	Release, Sear	5
D7267064	Rod, Operating, Assembly (composed of)	8
F7267029	1 - Handle, Operating Rod	
B7267092	1 - Tube, Operating Rod	
D7267066	Safety	2
D7267067	Screw, Front Sight	2
SA-B-31946	Screw, Stabilizer Nut, Lock	10
C7267071	Selector	5
C7267072	Shaft, Selector	5
D7267073	Sight, Front	2
B7267074	Spring, Bolt Lock	5
B6008887	Spring, Hammer	4
B7267079	Spring, Operating Rod	5

REPORT
SA-NM11-2617

LIST OF PARTS, T44E5 (M15) RIFLE - Continued

<u>Ordinance</u> <u>Dwg. No.</u>	<u>Components</u>	<u>Number, Spare Parts</u> <u>for Maintenance of</u> <u>100 Weapons</u>
B7267080	Spring, Safety	5
B7267081	Spring, Selector	5
SA-F-33598	Stook Assembly, Heavy Barrel (composed of)	10
SA-A-24049	1 - Ferrule, Stook	
SA-C-34120	1 - Liner, Stook	
SA-D-32057	1 - Plate, Butt Hinge Assembly (composed of)	
D6147465	1 - Cap, Butt Plate	
A5152865	1 - Pin, Butt Plate Cap	
SA-C-32056	1 - Plate, Butt, Assembly	
B5152864	1 - Plunger, Butt Plate	
B5152863	1 - Spring, Butt Plate Plunger	
SA-C-32055	1 - Plate, Shoulder Rest	
SA-A-33364	1 - Pin, Hinge, Shoulder Rest	
CCAX1	1 - Ball	
(104918)		
SA-A-33974	1 - Setscrew	
A5013747	1 - Spring, Shoulder Rest	
C6008881	1 - Screw, Butt Plate, Long	2
B6146873	1 - Screw, Butt Plate, Small	2
C6008889	1 - Swivel, Butt	2
BMCX1.3	2 - Rivet, Truss Head	10
(106886)		
SA-B-38554	1 - Screw, Stook, Left Side	4
SA-B-38555	1 - Screw, Stook, Right Side	4
SA-F-34119	1 - Stook	
C7267089	1 - Swivel, Front, Assembly (composed of)	2
B7267007	1 - Bracket, Front Swivel	
B7267037	1 - Loop, Front Swivel	
SA-D-31921	Suppressor, Flash	5
C7267090	Trigger and Sear, Assembly (composed of)	4
A5013673	1 - Pin, Sear	
D7267070	1 - Sear	
D5546020	1 - Trigger	

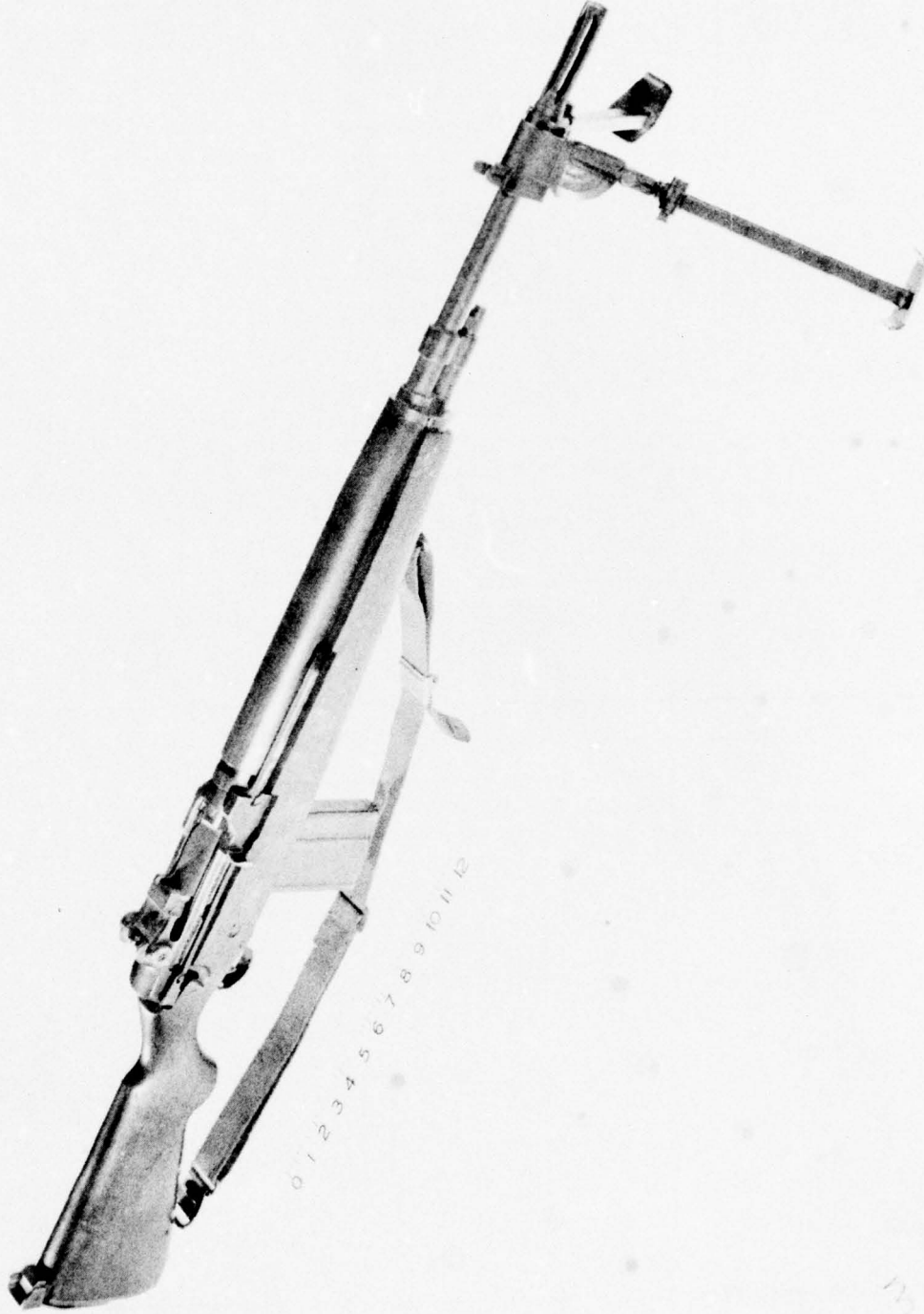
REPORT
SA-NM11-2617

APPENDIX B

PHOTOGRAPHS (8)

View

- | | | |
|---|-------------------|---|
| 1 | 19-058-621/ORD-58 | Left-side View |
| 2 | 19-058-620/ORD-58 | Right-side View |
| 3 | 19-058-622/ORD-58 | Field-stripped |
| 4 | 19-058-630/ORD-58 | Magazine Disassembled |
| 5 | 10913-SA | Disassembled Bolt Group |
| 6 | 10914-SA | Disassembled Trigger Group |
| 7 | 10915-SA | Disassembled Connector Assembly,
Connector Lock, Selector and Bolt
Lock |
| 8 | 19-058-623/ORD-58 | Gas System |

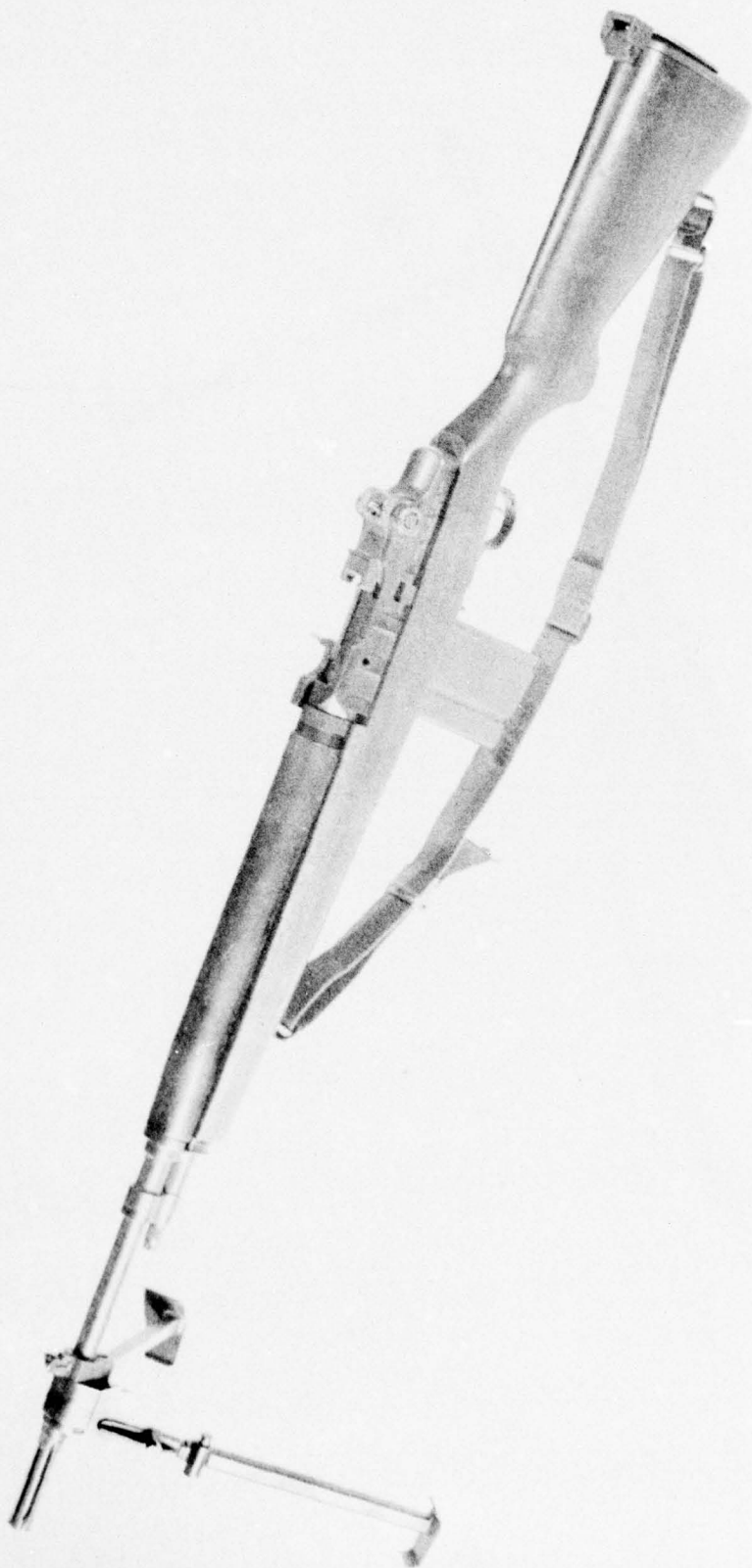


19-058-620/ORD-58

SPRINGFIELD ARMORY
RIFLE, CALIBER .30, T44E5
Right Side View

18 June 1958

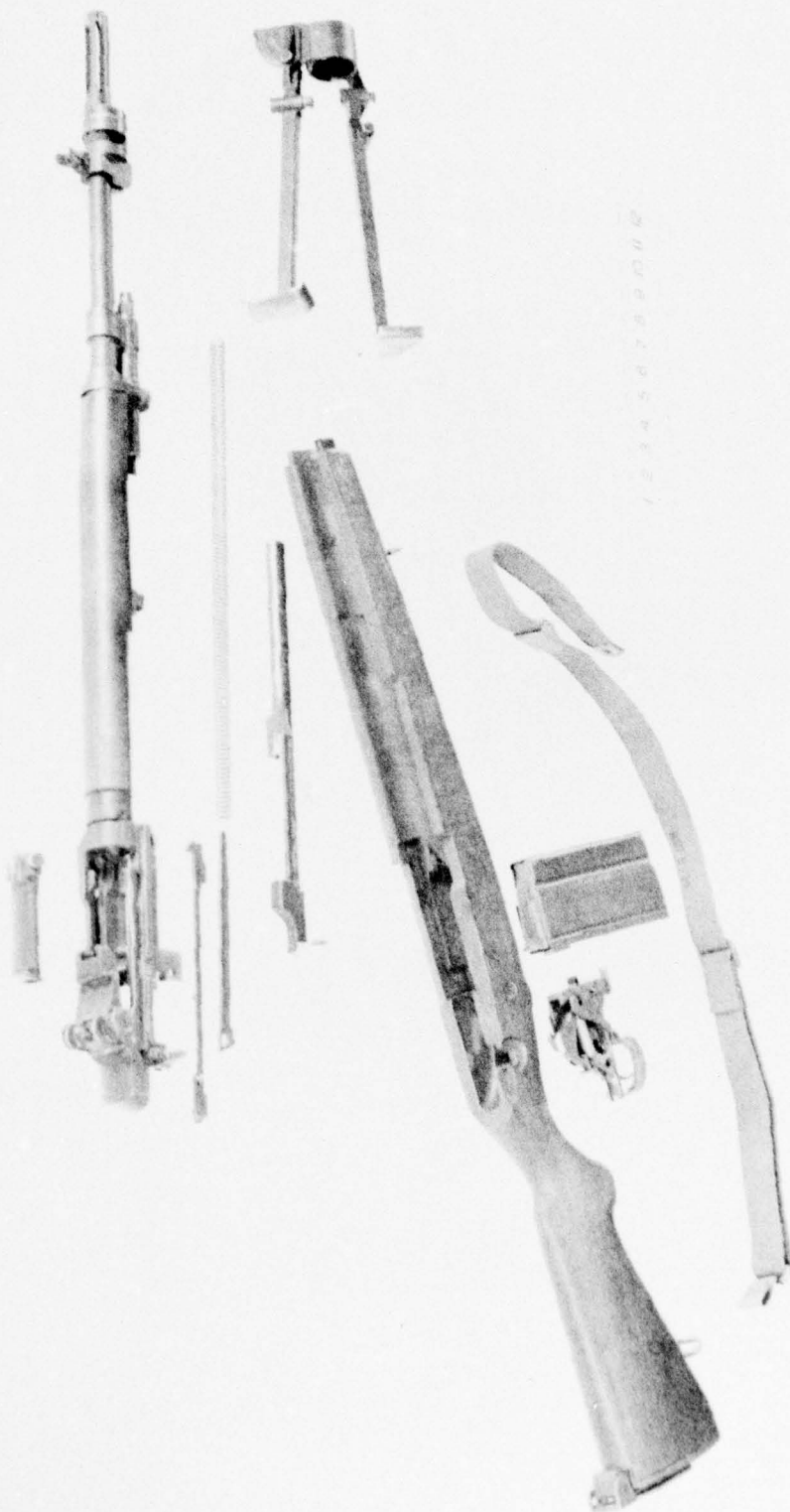
31



19-058-621/ORD-58

SPRINGFIELD ARMORY
RIFLE, CALIBER. 30, T44E5
Left Side View

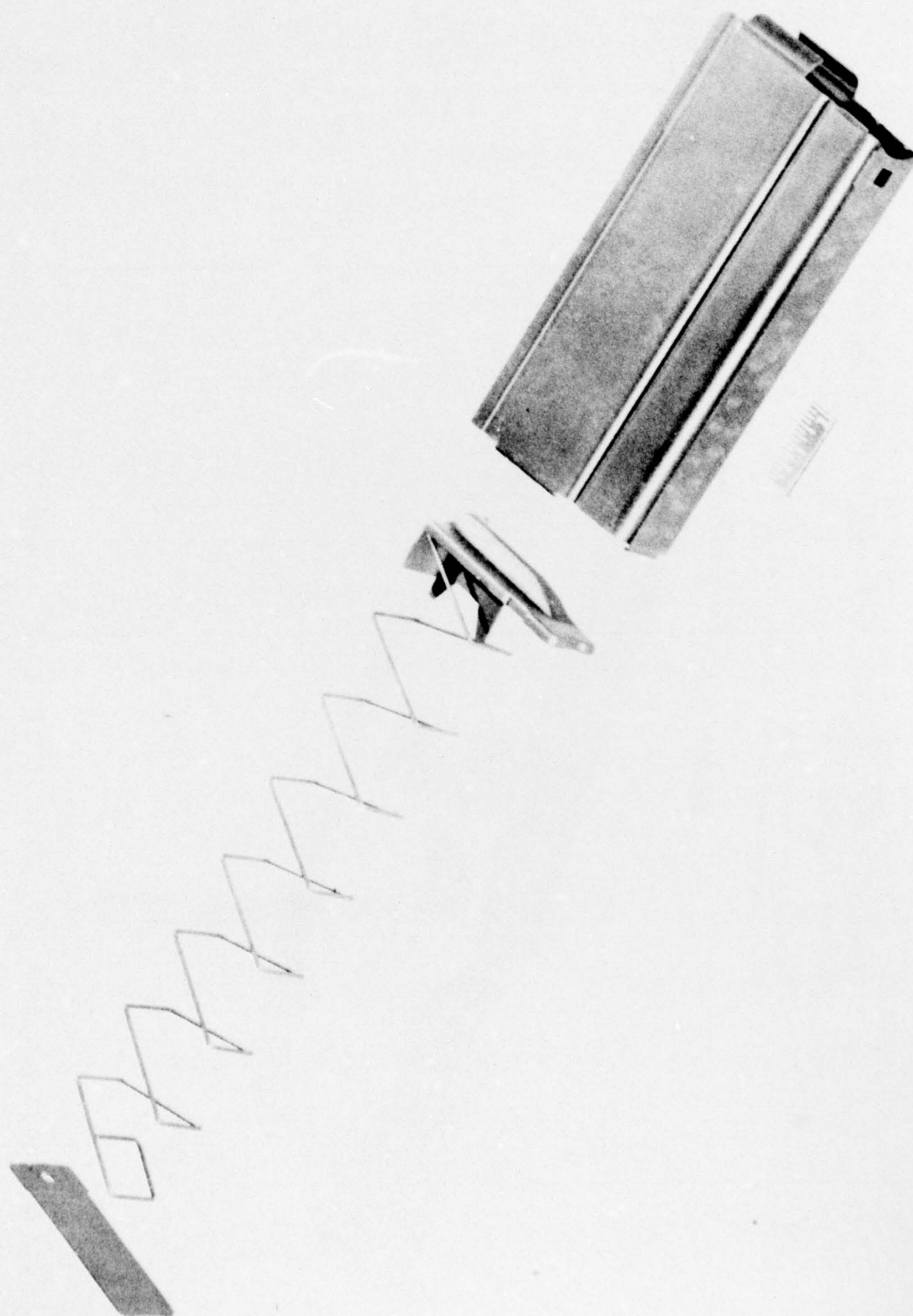
17 June 1958



19-058-622/ORD-58

SPRINGFIELD ARMORY
SPRINGFIELD RIFLE, M15
Field-stripped

18 June 1958



19-058-630/ORD-58

SPRINGFIELD ARMORY

19 JUNE 58

RIFLE CALIBER .30, T44E4 and T44E5
MAGAZINE DISASSEMBLED

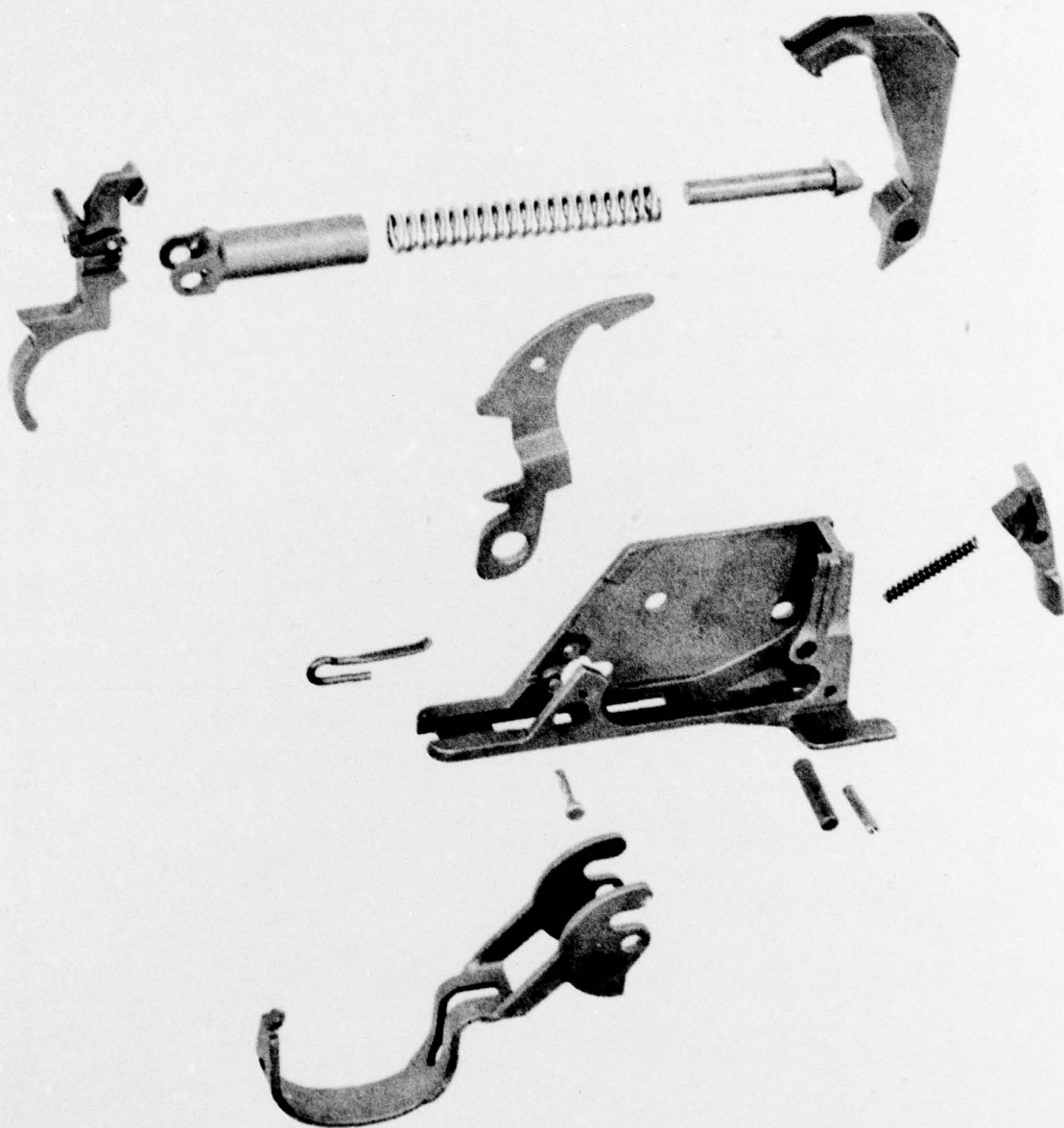


10913-SA SPRINGFIELD ARMORY - ORDNANCE CORPS 13 June 1955

RIFLE, CALIBER.30, T44E4

Disassembled Bolt Group.

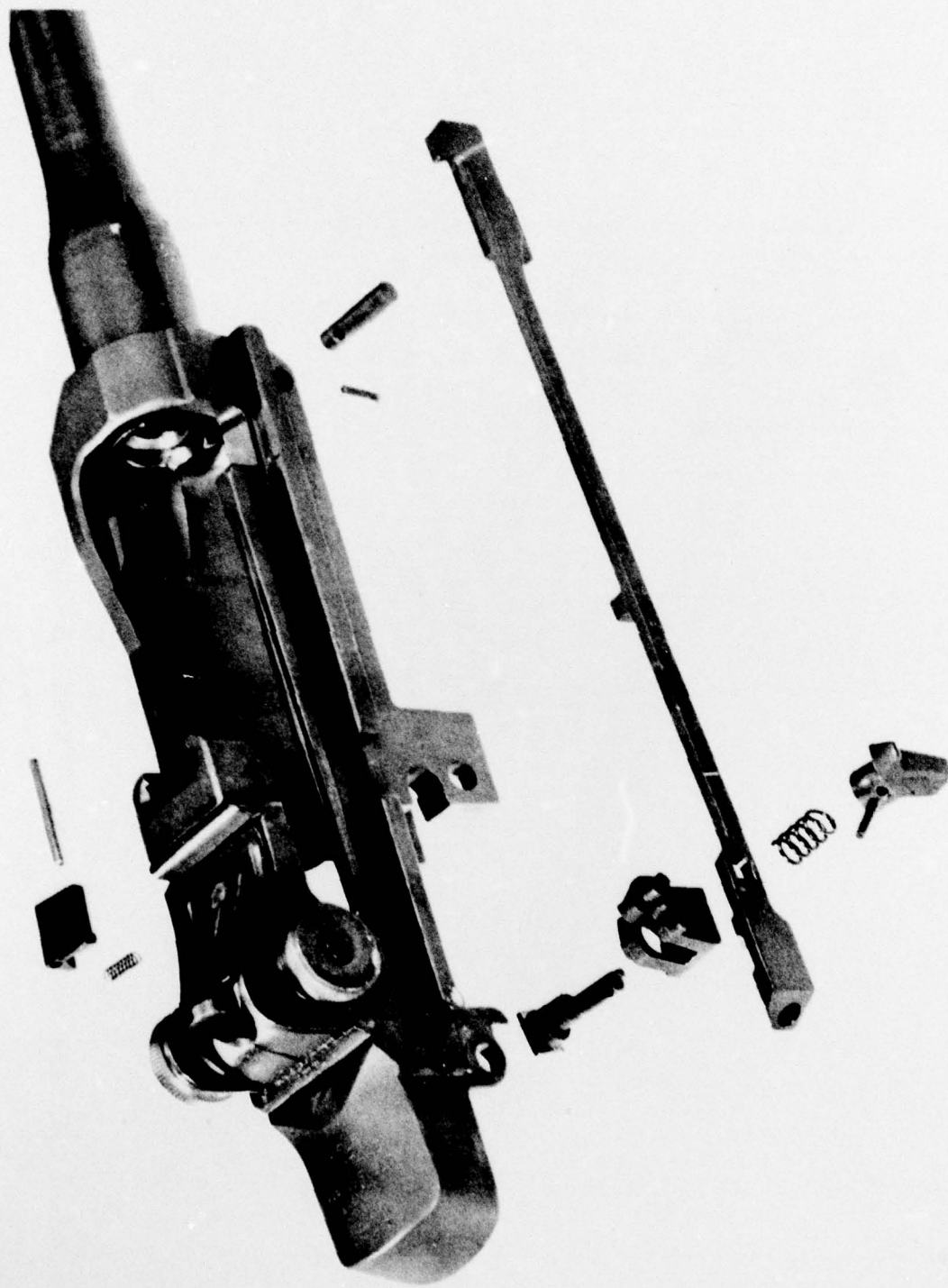
31



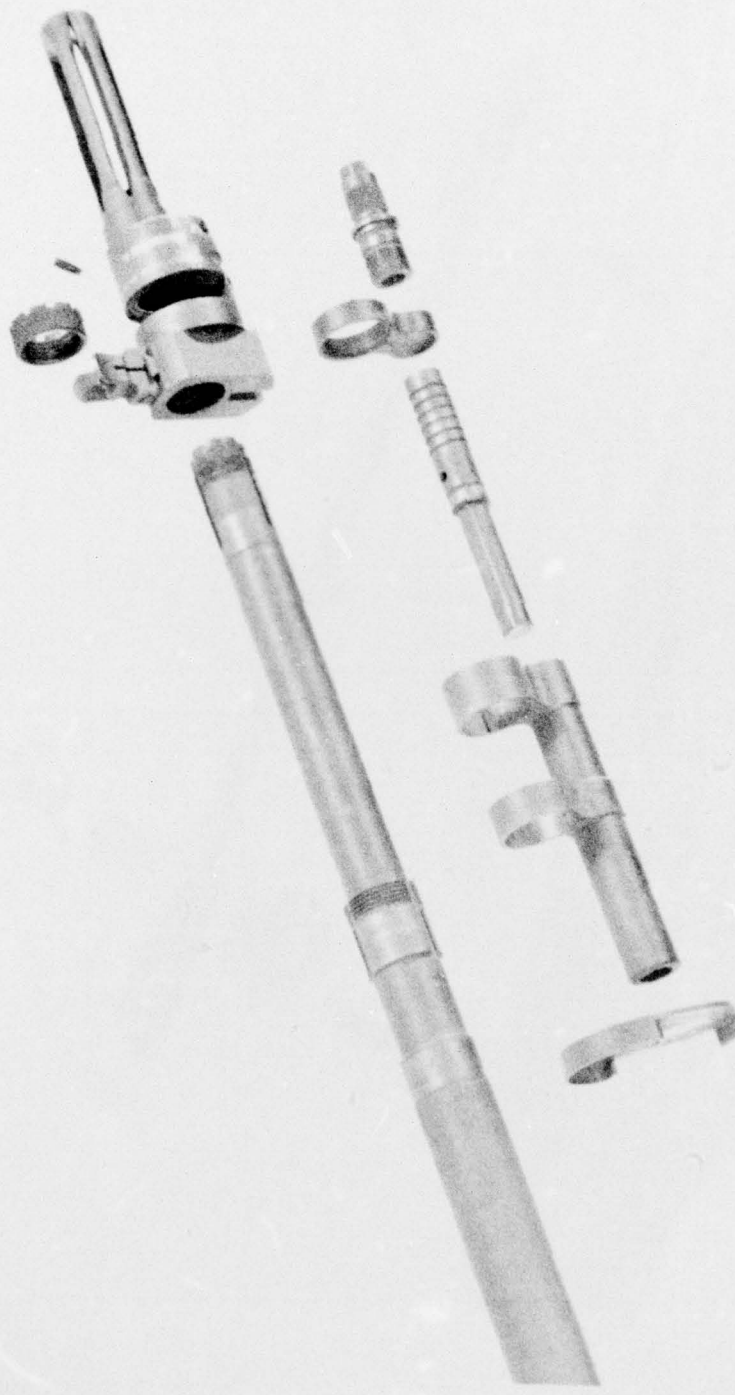
10914-SA

SPRINGFIELD ARMORY
RIFLE, CALIBER .30, T44E4 AND T44E5
Disassembled Trigger Group

13 June 1955



10915-SA SPRINGFIELD ARMORY - ORDNANCE CORPS 13 June 1955
RIFLE, CALIBER. 30, T44E4
Disassembled Connector Assembly, Connector Lock, Selector and Bolt Lock



19-058-623/ORD-58

SPRINGFIELD ARMORY
RIFLE, CALIBER .30, T44E5
Gas System

18 June 1958

PLATE-SA-C32055

PIN-SA-A33364

BODY-SA-C35716

SCREW-BG46873

SWIVEL-CG008329

SCREW-CG008381

STOCK-SA-F34119

PLATE-SA-D32054

RECEIVER-F7267056

PIN-B5013669

SEAR-D7267070

PIN-A5013673

PLUNGER-BG008880

SPRING-BG008887

BASE-D5546003

LATCH-C7267032

PIN-BFSXB1(554085)

SPRING-B7267041

HOUSING-F7267030

PIN-B5013669

HAMMER-D7267963

SPRING-B7267080

SAFETY-D7267066

HOUSING-CG008883

TRIGGER-D5546020

GUARD-D7267022

APERTURE

PINION

PIN-BFS

GUIDE

LOVER

BOLT-F

PIN-C73

LOCK-BY

1000000000

12730

1590000

17020

17000

17000

17000

17000

17000

17000

17000

17000

17000

17000

17000

17000

17000

17000

17000

17000

17000

17000

17000

17000

17000

17000

17000

17000

17000

17000

17000

17000

17000

17000

17000

17000

17000

17000

17000

17000

17000

17000

17000

17000

17000

17000

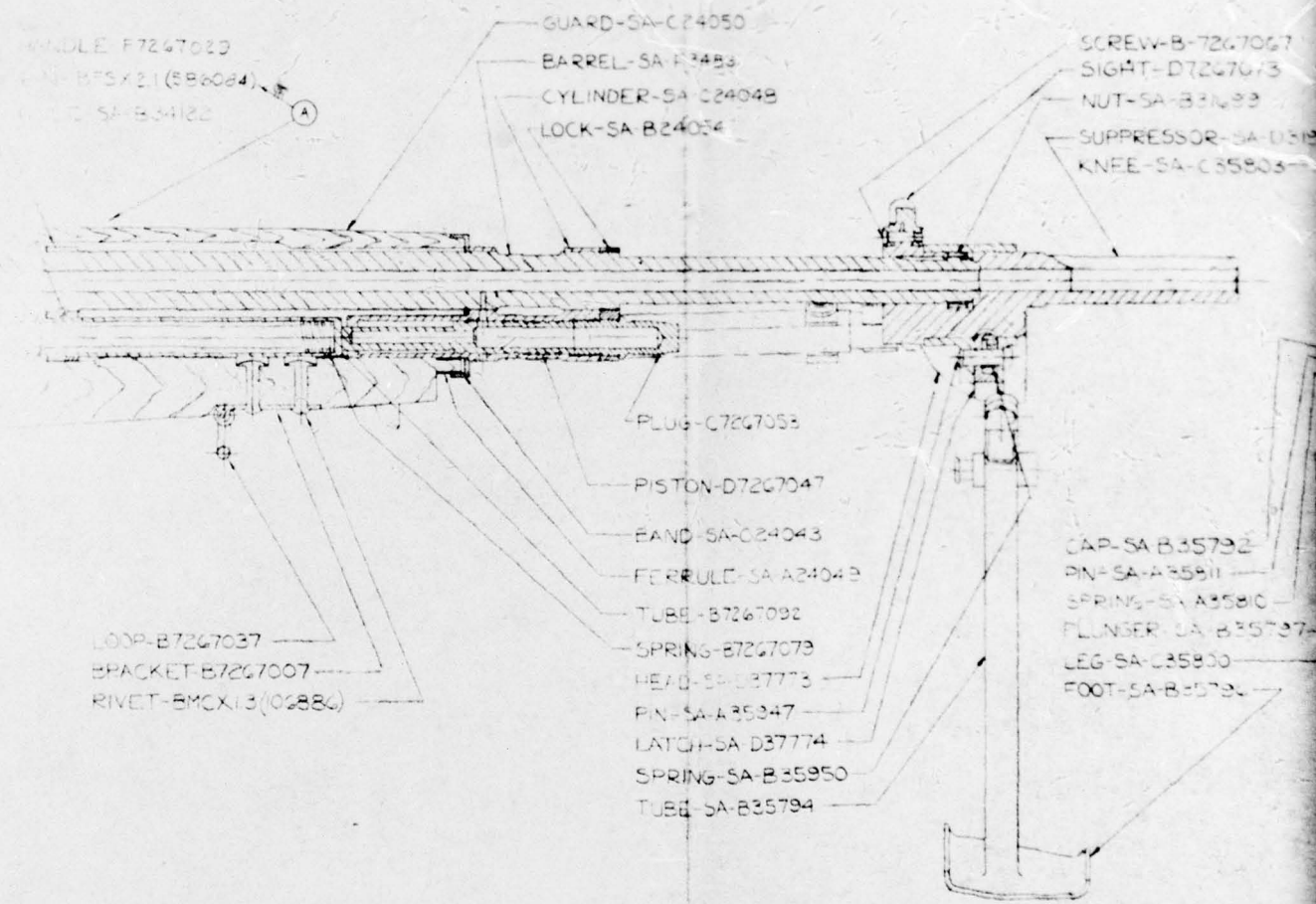
17000

17000

17000

17000

17000



2

PROFESSIONAL DESIGN CO.

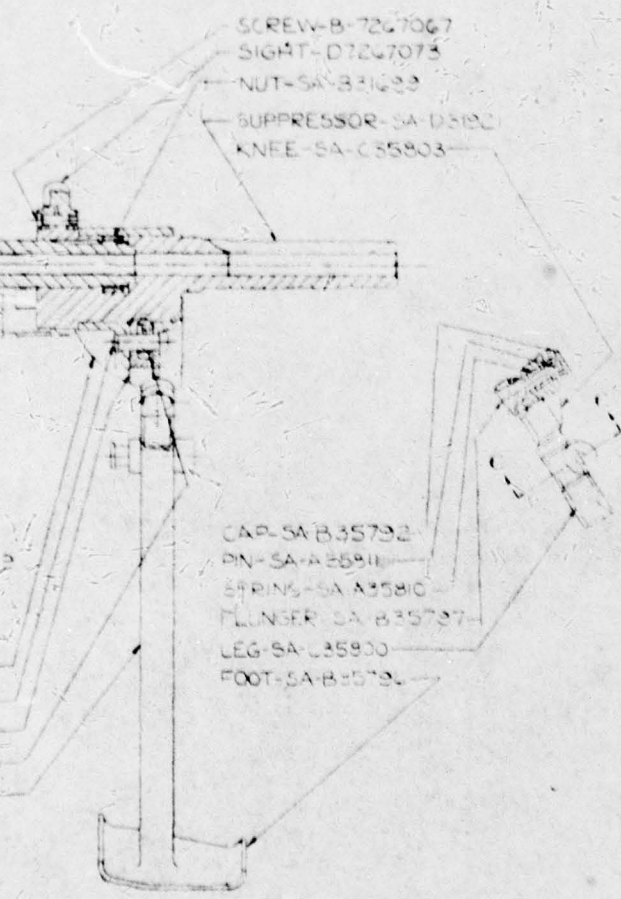
PROPERTY	QUANTITY	DESCRIPTION	UNIT	REMARKS
1	1	BARREL	INCHES	1.00
2	1	GUARD	INCHES	1.00
3	1	LOCK	INCHES	1.00
4	1	WADLE	INCHES	1.00
5	1	WADLE	INCHES	1.00
6	1	WADLE	INCHES	1.00
7	1	WADLE	INCHES	1.00
8	1	WADLE	INCHES	1.00
9	1	WADLE	INCHES	1.00
10	1	WADLE	INCHES	1.00
11	1	WADLE	INCHES	1.00
12	1	WADLE	INCHES	1.00
13	1	WADLE	INCHES	1.00
14	1	WADLE	INCHES	1.00
15	1	WADLE	INCHES	1.00
16	1	WADLE	INCHES	1.00
17	1	WADLE	INCHES	1.00
18	1	WADLE	INCHES	1.00
19	1	WADLE	INCHES	1.00
20	1	WADLE	INCHES	1.00
21	1	WADLE	INCHES	1.00
22	1	WADLE	INCHES	1.00
23	1	WADLE	INCHES	1.00
24	1	WADLE	INCHES	1.00
25	1	WADLE	INCHES	1.00
26	1	WADLE	INCHES	1.00
27	1	WADLE	INCHES	1.00
28	1	WADLE	INCHES	1.00
29	1	WADLE	INCHES	1.00
30	1	WADLE	INCHES	1.00
31	1	WADLE	INCHES	1.00
32	1	WADLE	INCHES	1.00
33	1	WADLE	INCHES	1.00
34	1	WADLE	INCHES	1.00
35	1	WADLE	INCHES	1.00
36	1	WADLE	INCHES	1.00
37	1	WADLE	INCHES	1.00
38	1	WADLE	INCHES	1.00
39	1	WADLE	INCHES	1.00
40	1	WADLE	INCHES	1.00
41	1	WADLE	INCHES	1.00
42	1	WADLE	INCHES	1.00
43	1	WADLE	INCHES	1.00
44	1	WADLE	INCHES	1.00
45	1	WADLE	INCHES	1.00
46	1	WADLE	INCHES	1.00
47	1	WADLE	INCHES	1.00
48	1	WADLE	INCHES	1.00
49	1	WADLE	INCHES	1.00
50	1	WADLE	INCHES	1.00
51	1	WADLE	INCHES	1.00
52	1	WADLE	INCHES	1.00
53	1	WADLE	INCHES	1.00
54	1	WADLE	INCHES	1.00
55	1	WADLE	INCHES	1.00
56	1	WADLE	INCHES	1.00
57	1	WADLE	INCHES	1.00
58	1	WADLE	INCHES	1.00
59	1	WADLE	INCHES	1.00
60	1	WADLE	INCHES	1.00
61	1	WADLE	INCHES	1.00
62	1	WADLE	INCHES	1.00
63	1	WADLE	INCHES	1.00
64	1	WADLE	INCHES	1.00
65	1	WADLE	INCHES	1.00
66	1	WADLE	INCHES	1.00
67	1	WADLE	INCHES	1.00
68	1	WADLE	INCHES	1.00
69	1	WADLE	INCHES	1.00
70	1	WADLE	INCHES	1.00
71	1	WADLE	INCHES	1.00
72	1	WADLE	INCHES	1.00
73	1	WADLE	INCHES	1.00
74	1	WADLE	INCHES	1.00
75	1	WADLE	INCHES	1.00
76	1	WADLE	INCHES	1.00
77	1	WADLE	INCHES	1.00
78	1	WADLE	INCHES	1.00
79	1	WADLE	INCHES	1.00
80	1	WADLE	INCHES	1.00
81	1	WADLE	INCHES	1.00
82	1	WADLE	INCHES	1.00
83	1	WADLE	INCHES	1.00
84	1	WADLE	INCHES	1.00
85	1	WADLE	INCHES	1.00
86	1	WADLE	INCHES	1.00
87	1	WADLE	INCHES	1.00
88	1	WADLE	INCHES	1.00
89	1	WADLE	INCHES	1.00
90	1	WADLE	INCHES	1.00
91	1	WADLE	INCHES	1.00
92	1	WADLE	INCHES	1.00
93	1	WADLE	INCHES	1.00
94	1	WADLE	INCHES	1.00
95	1	WADLE	INCHES	1.00
96	1	WADLE	INCHES	1.00
97	1	WADLE	INCHES	1.00
98	1	WADLE	INCHES	1.00
99	1	WADLE	INCHES	1.00
100	1	WADLE	INCHES	1.00

1050
 1083
 C24048
 104

C7267063
 D7267047
 SA-C24043
 LE-SA-A24042
 B7267092
 B7267073
 B7267073
 A35347
 SA D37774
 SA-B35950
 A-B35794

SCREW-B-7267067
 SIGHT-D7267073
 NUT-SA-B31623
 SUPPRESSOR-SA-D3192
 KNEE-SA-C35803

CAP-SA-B35792
 PIN-SA-A35911
 SPRING-SA-A35810
 FLINGER-SA-B35797
 LEG-SA-C35800
 FOOT-SA-B35794



41

3

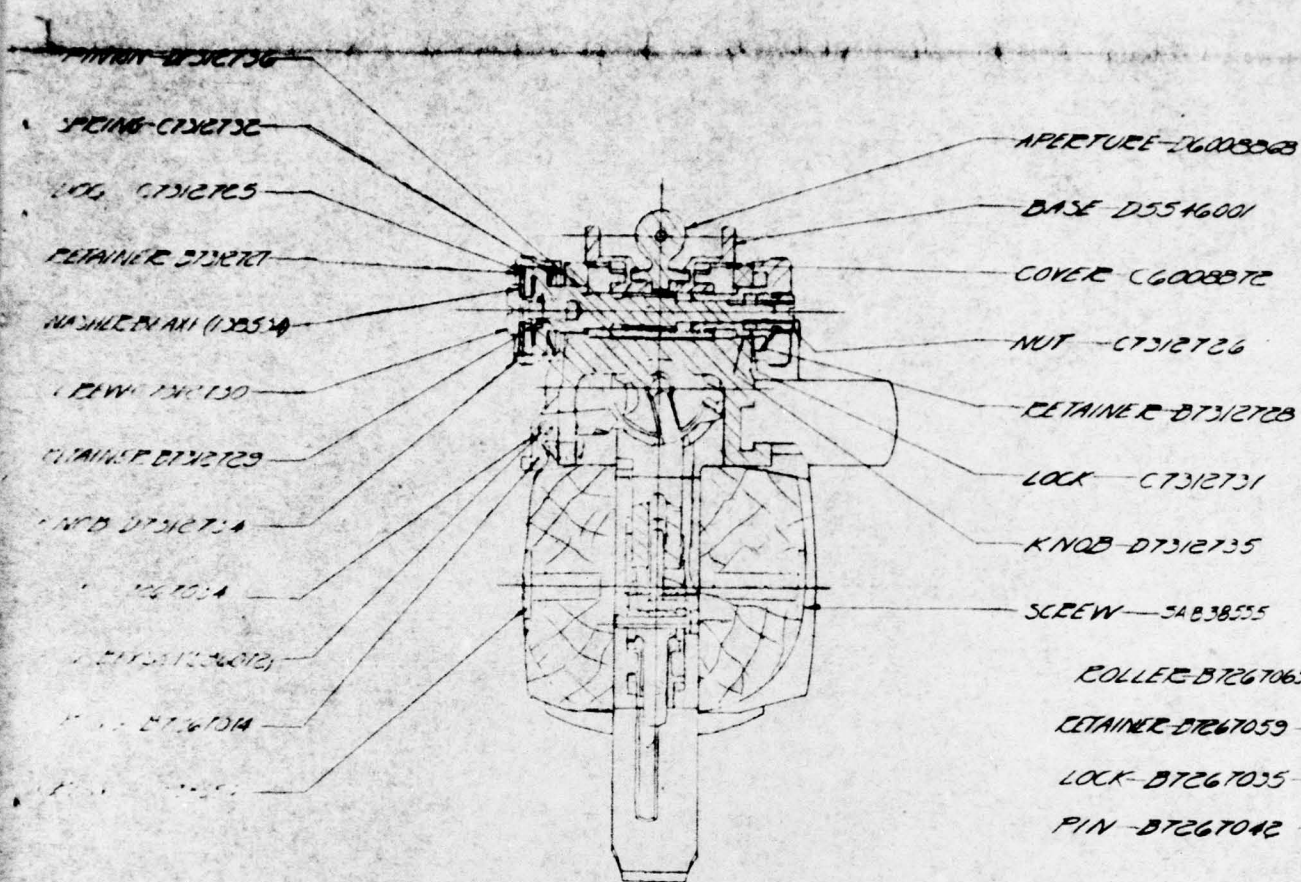
PROFESSIONAL DESIGN CO.

DESIGNER	DATE	REVISION	BY	DATE	REVISION	BY	DATE
1							
2							
3							
4							
5							
6							
7							
8							
9							
10							
11							
12							
13							
14							
15							
16							
17							
18							
19							
20							
21							
22							
23							
24							
25							
26							
27							
28							
29							
30							
31							
32							
33							
34							
35							
36							
37							
38							
39							
40							
41							
42							
43							
44							
45							
46							
47							
48							
49							
50							
51							
52							
53							
54							
55							
56							
57							
58							
59							
60							
61							
62							
63							
64							
65							
66							
67							
68							
69							
70							
71							
72							
73							
74							
75							
76							
77							
78							
79							
80							
81							
82							
83							
84							
85							
86							
87							
88							
89							
90							
91							
92							
93							
94							
95							
96							
97							
98							
99							
100							

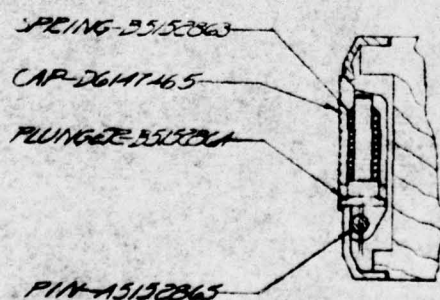
RIFLE, CAL. 30, 144ES
 LONGITUDINAL SECTION

ORDINANCE BOOK
 DEPT OF THE ARMY

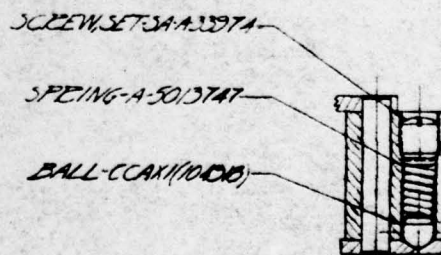
SA H38557



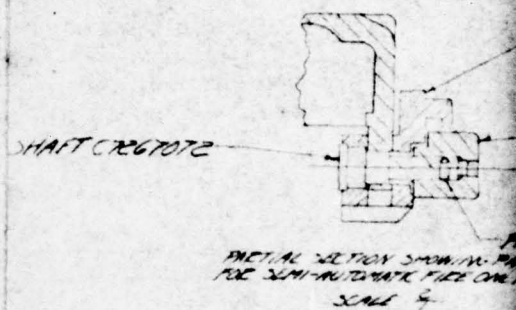
SECTION A-A
SCALE: 4/5



PARTIAL SECTION E-E
SCALE: 4/5



PARTIAL SECTION D-D
SCALE: 4/5

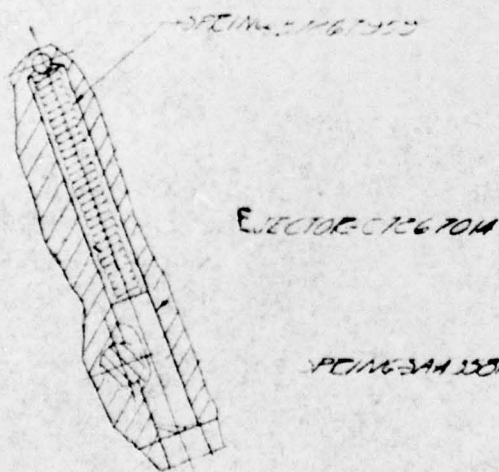


GUARD

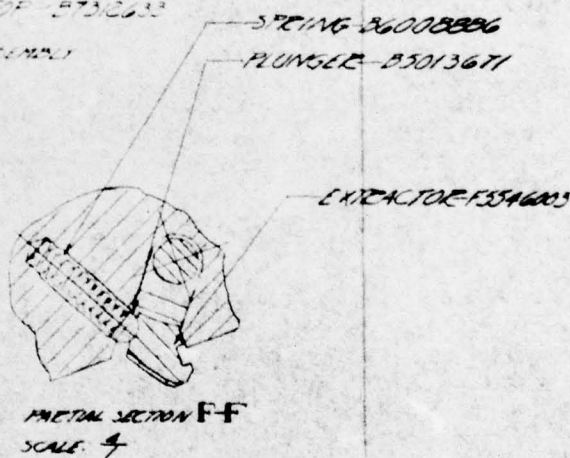
STOP

THIS WAS THE GUARD ASSEMBLY

END



PARTIAL SECTION G G
SCALE: $\frac{1}{4}$



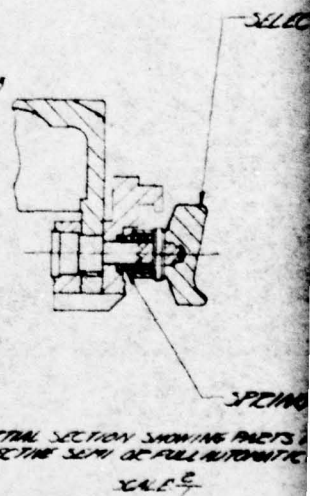
SECTION C-C
SCALE: 2:1

PIN-3A-A-3500

BLANK-3A-C-35798

PLUNGER-3A-B-35795

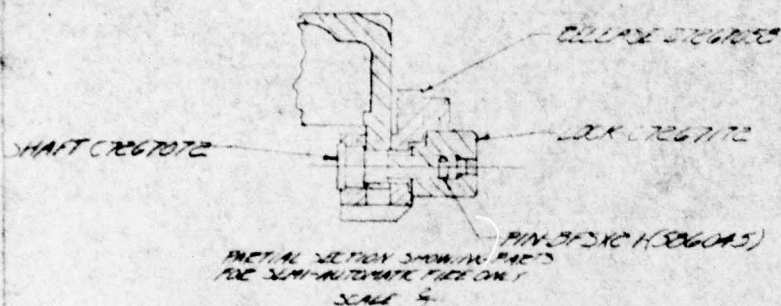
G



PROFESSIONAL DESIGN CO.			
1	DATE		REVISIONS MADE
2			BY
3			REASON
4			
5			
6			
7			
8			
9			
10			
11			
12			
13			
14			
15			
16			
17			
18			
19			
20			
21			
22			
23			
24			
25			
26			
27			
28			
29			
30			
31			
32			
33			
34			
35			
36			
37			
38			
39			
40			
41			
42			
43			
44			
45			
46			
47			
48			
49			
50			
51			
52			
53			
54			
55			
56			
57			
58			
59			
60			
61			
62			
63			
64			
65			
66			
67			
68			
69			
70			
71			
72			
73			
74			
75			
76			
77			
78			
79			
80			
81			
82			
83			
84			
85			
86			
87			
88			
89			
90			
91			
92			
93			
94			
95			
96			
97			
98			
99			
100			

57267024

Abstract

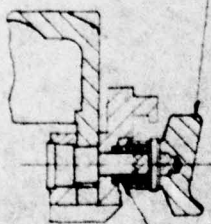


STING 8600886

PLUNGER-B5013671

~~SELECTOR C726 TO 71~~

EXTRACTOR F5546003



SPRING-B7267081

FRONTAL SECTION SHOWING PARTS FOR
SELECTING SEMI OR FULL AUTOMATIC FIRE

245

44-38861-1000

W-5A-A-35012

~~RUNGE-3A-B-35795~~

3

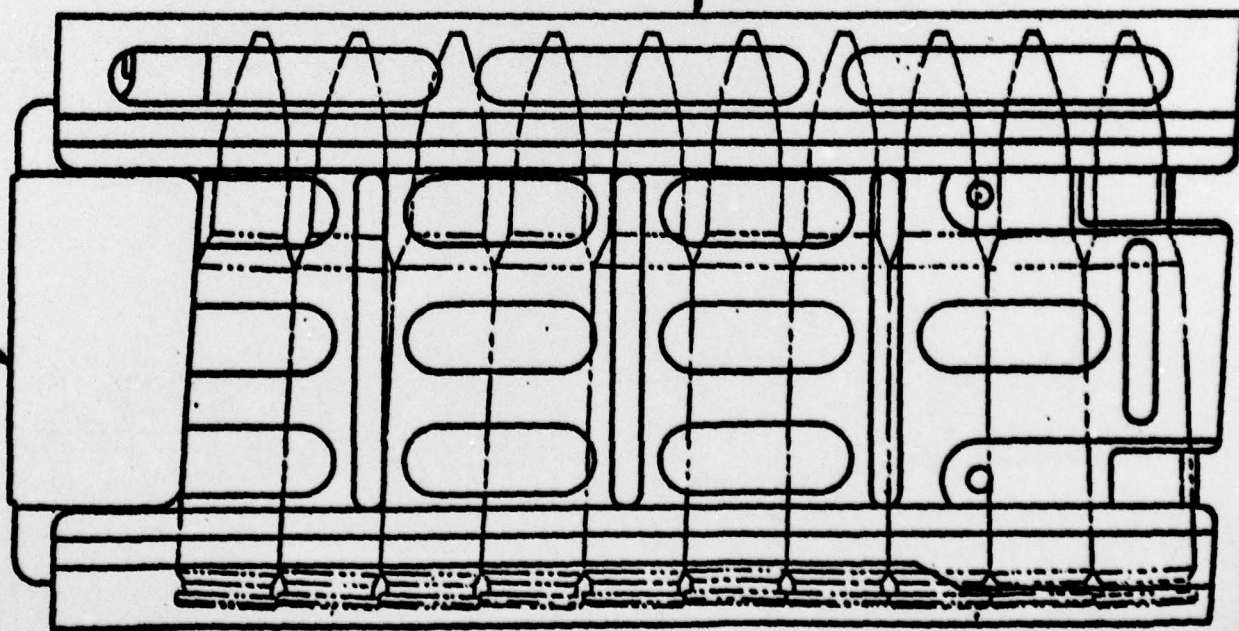
3																																																																																																																																																																																																																																																																																																																																																					
PROFESSIONAL DESIGN CO.																																																																																																																																																																																																																																																																																																																																																					
<table border="1"> <tr><td>1</td><td></td></tr> <tr><td>2</td><td></td></tr> <tr><td>3</td><td></td></tr> <tr><td>4</td><td></td></tr> <tr><td>5</td><td></td></tr> <tr><td>6</td><td></td></tr> <tr><td>7</td><td></td></tr> <tr><td>8</td><td></td></tr> <tr><td>9</td><td></td></tr> <tr><td>10</td><td></td></tr> <tr><td>11</td><td></td></tr> <tr><td>12</td><td></td></tr> </table>		1		2		3		4		5		6		7		8		9		10		11		12		<table border="1"> <tr><td>13</td><td></td></tr> <tr><td>14</td><td></td></tr> <tr><td>15</td><td></td></tr> <tr><td>16</td><td></td></tr> <tr><td>17</td><td></td></tr> <tr><td>18</td><td></td></tr> <tr><td>19</td><td></td></tr> <tr><td>20</td><td></td></tr> <tr><td>21</td><td></td></tr> <tr><td>22</td><td></td></tr> <tr><td>23</td><td></td></tr> <tr><td>24</td><td></td></tr> <tr><td>25</td><td></td></tr> <tr><td>26</td><td></td></tr> <tr><td>27</td><td></td></tr> <tr><td>28</td><td></td></tr> <tr><td>29</td><td></td></tr> <tr><td>30</td><td></td></tr> <tr><td>31</td><td></td></tr> </table>		13		14		15		16		17		18		19		20		21		22		23		24		25		26		27		28		29		30		31																																																																																																																																																																																																																																																																																					
1																																																																																																																																																																																																																																																																																																																																																					
2																																																																																																																																																																																																																																																																																																																																																					
3																																																																																																																																																																																																																																																																																																																																																					
4																																																																																																																																																																																																																																																																																																																																																					
5																																																																																																																																																																																																																																																																																																																																																					
6																																																																																																																																																																																																																																																																																																																																																					
7																																																																																																																																																																																																																																																																																																																																																					
8																																																																																																																																																																																																																																																																																																																																																					
9																																																																																																																																																																																																																																																																																																																																																					
10																																																																																																																																																																																																																																																																																																																																																					
11																																																																																																																																																																																																																																																																																																																																																					
12																																																																																																																																																																																																																																																																																																																																																					
13																																																																																																																																																																																																																																																																																																																																																					
14																																																																																																																																																																																																																																																																																																																																																					
15																																																																																																																																																																																																																																																																																																																																																					
16																																																																																																																																																																																																																																																																																																																																																					
17																																																																																																																																																																																																																																																																																																																																																					
18																																																																																																																																																																																																																																																																																																																																																					
19																																																																																																																																																																																																																																																																																																																																																					
20																																																																																																																																																																																																																																																																																																																																																					
21																																																																																																																																																																																																																																																																																																																																																					
22																																																																																																																																																																																																																																																																																																																																																					
23																																																																																																																																																																																																																																																																																																																																																					
24																																																																																																																																																																																																																																																																																																																																																					
25																																																																																																																																																																																																																																																																																																																																																					
26																																																																																																																																																																																																																																																																																																																																																					
27																																																																																																																																																																																																																																																																																																																																																					
28																																																																																																																																																																																																																																																																																																																																																					
29																																																																																																																																																																																																																																																																																																																																																					
30																																																																																																																																																																																																																																																																																																																																																					
31																																																																																																																																																																																																																																																																																																																																																					
<table border="1"> <tr><td>32</td><td></td></tr> <tr><td>33</td><td></td></tr> <tr><td>34</td><td></td></tr> <tr><td>35</td><td></td></tr> <tr><td>36</td><td></td></tr> <tr><td>37</td><td></td></tr> <tr><td>38</td><td></td></tr> <tr><td>39</td><td></td></tr> <tr><td>40</td><td></td></tr> <tr><td>41</td><td></td></tr> <tr><td>42</td><td></td></tr> <tr><td>43</td><td></td></tr> <tr><td>44</td><td></td></tr> <tr><td>45</td><td></td></tr> <tr><td>46</td><td></td></tr> <tr><td>47</td><td></td></tr> <tr><td>48</td><td></td></tr> <tr><td>49</td><td></td></tr> <tr><td>50</td><td></td></tr> <tr><td>51</td><td></td></tr> <tr><td>52</td><td></td></tr> <tr><td>53</td><td></td></tr> <tr><td>54</td><td></td></tr> <tr><td>55</td><td></td></tr> <tr><td>56</td><td></td></tr> <tr><td>57</td><td></td></tr> <tr><td>58</td><td></td></tr> <tr><td>59</td><td></td></tr> <tr><td>60</td><td></td></tr> <tr><td>61</td><td></td></tr> <tr><td>62</td><td></td></tr> <tr><td>63</td><td></td></tr> <tr><td>64</td><td></td></tr> <tr><td>65</td><td></td></tr> <tr><td>66</td><td></td></tr> <tr><td>67</td><td></td></tr> <tr><td>68</td><td></td></tr> <tr><td>69</td><td></td></tr> <tr><td>70</td><td></td></tr> <tr><td>71</td><td></td></tr> <tr><td>72</td><td></td></tr> <tr><td>73</td><td></td></tr> <tr><td>74</td><td></td></tr> <tr><td>75</td><td></td></tr> <tr><td>76</td><td></td></tr> <tr><td>77</td><td></td></tr> <tr><td>78</td><td></td></tr> <tr><td>79</td><td></td></tr> <tr><td>80</td><td></td></tr> <tr><td>81</td><td></td></tr> <tr><td>82</td><td></td></tr> <tr><td>83</td><td></td></tr> <tr><td>84</td><td></td></tr> <tr><td>85</td><td></td></tr> <tr><td>86</td><td></td></tr> <tr><td>87</td><td></td></tr> <tr><td>88</td><td></td></tr> <tr><td>89</td><td></td></tr> <tr><td>90</td><td></td></tr> <tr><td>91</td><td></td></tr> <tr><td>92</td><td></td></tr> <tr><td>93</td><td></td></tr> <tr><td>94</td><td></td></tr> <tr><td>95</td><td></td></tr> <tr><td>96</td><td></td></tr> <tr><td>97</td><td></td></tr> <tr><td>98</td><td></td></tr> <tr><td>99</td><td></td></tr> <tr><td>100</td><td></td></tr> </table>		32		33		34		35		36		37		38		39		40		41		42		43		44		45		46		47		48		49		50		51		52		53		54		55		56		57		58		59		60		61		62		63		64		65		66		67		68		69		70		71		72		73		74		75		76		77		78		79		80		81		82		83		84		85		86		87		88		89		90		91		92		93		94		95		96		97		98		99		100		<table border="1"> <tr><td>101</td><td></td></tr> <tr><td>102</td><td></td></tr> <tr><td>103</td><td></td></tr> <tr><td>104</td><td></td></tr> <tr><td>105</td><td></td></tr> <tr><td>106</td><td></td></tr> <tr><td>107</td><td></td></tr> <tr><td>108</td><td></td></tr> <tr><td>109</td><td></td></tr> <tr><td>110</td><td></td></tr> <tr><td>111</td><td></td></tr> <tr><td>112</td><td></td></tr> <tr><td>113</td><td></td></tr> <tr><td>114</td><td></td></tr> <tr><td>115</td><td></td></tr> <tr><td>116</td><td></td></tr> <tr><td>117</td><td></td></tr> <tr><td>118</td><td></td></tr> <tr><td>119</td><td></td></tr> <tr><td>120</td><td></td></tr> <tr><td>121</td><td></td></tr> <tr><td>122</td><td></td></tr> <tr><td>123</td><td></td></tr> <tr><td>124</td><td></td></tr> <tr><td>125</td><td></td></tr> <tr><td>126</td><td></td></tr> <tr><td>127</td><td></td></tr> <tr><td>128</td><td></td></tr> <tr><td>129</td><td></td></tr> <tr><td>130</td><td></td></tr> <tr><td>131</td><td></td></tr> <tr><td>132</td><td></td></tr> <tr><td>133</td><td></td></tr> <tr><td>134</td><td></td></tr> <tr><td>135</td><td></td></tr> <tr><td>136</td><td></td></tr> <tr><td>137</td><td></td></tr> <tr><td>138</td><td></td></tr> <tr><td>139</td><td></td></tr> <tr><td>140</td><td></td></tr> <tr><td>141</td><td></td></tr> <tr><td>142</td><td></td></tr> <tr><td>143</td><td></td></tr> <tr><td>144</td><td></td></tr> <tr><td>145</td><td></td></tr> <tr><td>146</td><td></td></tr> <tr><td>147</td><td></td></tr> <tr><td>148</td><td></td></tr> <tr><td>149</td><td></td></tr> <tr><td>150</td><td></td></tr> <tr><td>151</td><td></td></tr> <tr><td>152</td><td></td></tr> <tr><td>153</td><td></td></tr> <tr><td>154</td><td></td></tr> <tr><td>155</td><td></td></tr> <tr><td>156</td><td></td></tr> <tr><td>157</td><td></td></tr> <tr><td>158</td><td></td></tr> <tr><td>159</td><td></td></tr> <tr><td>160</td><td></td></tr> <tr><td>161</td><td></td></tr> <tr><td>162</td><td></td></tr> <tr><td>163</td><td></td></tr> <tr><td>164</td><td></td></tr> <tr><td>165</td><td></td></tr> <tr><td>166</td><td></td></tr> <tr><td>167</td><td></td></tr> <tr><td>168</td><td></td></tr> <tr><td>169</td><td></td></tr> <tr><td>170</td><td></td></tr> <tr><td>171</td><td></td></tr> <tr><td>172</td><td></td></tr> <tr><td>173</td><td></td></tr> <tr><td>174</td><td></td></tr> <tr><td>175</td><td></td></tr> <tr><td>176</td><td></td></tr> <tr><td>177</td><td></td></tr> <tr><td>178</td><td></td></tr> <tr><td>179</td><td></td></tr> <tr><td>180</td><td></td></tr> <tr><td>181</td><td></td></tr> <tr><td>182</td><td></td></tr> <tr><td>183</td><td></td></tr> <tr><td>184</td><td></td></tr> <tr><td>185</td><td></td></tr> <tr><td>186</td><td></td></tr> <tr><td>187</td><td></td></tr> <tr><td>188</td><td></td></tr> <tr><td>189</td><td></td></tr> <tr><td>190</td><td></td></tr> <tr><td>191</td><td></td></tr> <tr><td>192</td><td></td></tr> <tr><td>193</td><td></td></tr> <tr><td>194</td><td></td></tr> <tr><td>195</td><td></td></tr> <tr><td>196</td><td></td></tr> <tr><td>197</td><td></td></tr> <tr><td>198</td><td></td></tr> <tr><td>199</td><td></td></tr> <tr><td>200</td><td></td></tr> </table>		101		102		103		104		105		106		107		108		109		110		111		112		113		114		115		116		117		118		119		120		121		122		123		124		125		126		127		128		129		130		131		132		133		134		135		136		137		138		139		140		141		142		143		144		145		146		147		148		149		150		151		152		153		154		155		156		157		158		159		160		161		162		163		164		165		166		167		168		169		170		171		172		173		174		175		176		177		178		179		180		181		182		183		184		185		186		187		188		189		190		191		192		193		194		195		196		197		198		199		200	
32																																																																																																																																																																																																																																																																																																																																																					
33																																																																																																																																																																																																																																																																																																																																																					
34																																																																																																																																																																																																																																																																																																																																																					
35																																																																																																																																																																																																																																																																																																																																																					
36																																																																																																																																																																																																																																																																																																																																																					
37																																																																																																																																																																																																																																																																																																																																																					
38																																																																																																																																																																																																																																																																																																																																																					
39																																																																																																																																																																																																																																																																																																																																																					
40																																																																																																																																																																																																																																																																																																																																																					
41																																																																																																																																																																																																																																																																																																																																																					
42																																																																																																																																																																																																																																																																																																																																																					
43																																																																																																																																																																																																																																																																																																																																																					
44																																																																																																																																																																																																																																																																																																																																																					
45																																																																																																																																																																																																																																																																																																																																																					
46																																																																																																																																																																																																																																																																																																																																																					
47																																																																																																																																																																																																																																																																																																																																																					
48																																																																																																																																																																																																																																																																																																																																																					
49																																																																																																																																																																																																																																																																																																																																																					
50																																																																																																																																																																																																																																																																																																																																																					
51																																																																																																																																																																																																																																																																																																																																																					
52																																																																																																																																																																																																																																																																																																																																																					
53																																																																																																																																																																																																																																																																																																																																																					
54																																																																																																																																																																																																																																																																																																																																																					
55																																																																																																																																																																																																																																																																																																																																																					
56																																																																																																																																																																																																																																																																																																																																																					
57																																																																																																																																																																																																																																																																																																																																																					
58																																																																																																																																																																																																																																																																																																																																																					
59																																																																																																																																																																																																																																																																																																																																																					
60																																																																																																																																																																																																																																																																																																																																																					
61																																																																																																																																																																																																																																																																																																																																																					
62																																																																																																																																																																																																																																																																																																																																																					
63																																																																																																																																																																																																																																																																																																																																																					
64																																																																																																																																																																																																																																																																																																																																																					
65																																																																																																																																																																																																																																																																																																																																																					
66																																																																																																																																																																																																																																																																																																																																																					
67																																																																																																																																																																																																																																																																																																																																																					
68																																																																																																																																																																																																																																																																																																																																																					
69																																																																																																																																																																																																																																																																																																																																																					
70																																																																																																																																																																																																																																																																																																																																																					
71																																																																																																																																																																																																																																																																																																																																																					
72																																																																																																																																																																																																																																																																																																																																																					
73																																																																																																																																																																																																																																																																																																																																																					
74																																																																																																																																																																																																																																																																																																																																																					
75																																																																																																																																																																																																																																																																																																																																																					
76																																																																																																																																																																																																																																																																																																																																																					
77																																																																																																																																																																																																																																																																																																																																																					
78																																																																																																																																																																																																																																																																																																																																																					
79																																																																																																																																																																																																																																																																																																																																																					
80																																																																																																																																																																																																																																																																																																																																																					
81																																																																																																																																																																																																																																																																																																																																																					
82																																																																																																																																																																																																																																																																																																																																																					
83																																																																																																																																																																																																																																																																																																																																																					
84																																																																																																																																																																																																																																																																																																																																																					
85																																																																																																																																																																																																																																																																																																																																																					
86																																																																																																																																																																																																																																																																																																																																																					
87																																																																																																																																																																																																																																																																																																																																																					
88																																																																																																																																																																																																																																																																																																																																																					
89																																																																																																																																																																																																																																																																																																																																																					
90																																																																																																																																																																																																																																																																																																																																																					
91																																																																																																																																																																																																																																																																																																																																																					
92																																																																																																																																																																																																																																																																																																																																																					
93																																																																																																																																																																																																																																																																																																																																																					
94																																																																																																																																																																																																																																																																																																																																																					
95																																																																																																																																																																																																																																																																																																																																																					
96																																																																																																																																																																																																																																																																																																																																																					
97																																																																																																																																																																																																																																																																																																																																																					
98																																																																																																																																																																																																																																																																																																																																																					
99																																																																																																																																																																																																																																																																																																																																																					
100																																																																																																																																																																																																																																																																																																																																																					
101																																																																																																																																																																																																																																																																																																																																																					
102																																																																																																																																																																																																																																																																																																																																																					
103																																																																																																																																																																																																																																																																																																																																																					
104																																																																																																																																																																																																																																																																																																																																																					
105																																																																																																																																																																																																																																																																																																																																																					
106																																																																																																																																																																																																																																																																																																																																																					
107																																																																																																																																																																																																																																																																																																																																																					
108																																																																																																																																																																																																																																																																																																																																																					
109																																																																																																																																																																																																																																																																																																																																																					
110																																																																																																																																																																																																																																																																																																																																																					
111																																																																																																																																																																																																																																																																																																																																																					
112																																																																																																																																																																																																																																																																																																																																																					
113																																																																																																																																																																																																																																																																																																																																																					
114																																																																																																																																																																																																																																																																																																																																																					
115																																																																																																																																																																																																																																																																																																																																																					
116																																																																																																																																																																																																																																																																																																																																																					
117																																																																																																																																																																																																																																																																																																																																																					
118																																																																																																																																																																																																																																																																																																																																																					
119																																																																																																																																																																																																																																																																																																																																																					
120																																																																																																																																																																																																																																																																																																																																																					
121																																																																																																																																																																																																																																																																																																																																																					
122																																																																																																																																																																																																																																																																																																																																																					
123																																																																																																																																																																																																																																																																																																																																																					
124																																																																																																																																																																																																																																																																																																																																																					
125																																																																																																																																																																																																																																																																																																																																																					
126																																																																																																																																																																																																																																																																																																																																																					
127																																																																																																																																																																																																																																																																																																																																																					
128																																																																																																																																																																																																																																																																																																																																																					
129																																																																																																																																																																																																																																																																																																																																																					
130																																																																																																																																																																																																																																																																																																																																																					
131																																																																																																																																																																																																																																																																																																																																																					
132																																																																																																																																																																																																																																																																																																																																																					
133																																																																																																																																																																																																																																																																																																																																																					
134																																																																																																																																																																																																																																																																																																																																																					
135																																																																																																																																																																																																																																																																																																																																																					
136																																																																																																																																																																																																																																																																																																																																																					
137																																																																																																																																																																																																																																																																																																																																																					
138																																																																																																																																																																																																																																																																																																																																																					
139																																																																																																																																																																																																																																																																																																																																																					
140																																																																																																																																																																																																																																																																																																																																																					
141																																																																																																																																																																																																																																																																																																																																																					
142																																																																																																																																																																																																																																																																																																																																																					
143																																																																																																																																																																																																																																																																																																																																																					
144																																																																																																																																																																																																																																																																																																																																																					
145																																																																																																																																																																																																																																																																																																																																																					
146																																																																																																																																																																																																																																																																																																																																																					
147																																																																																																																																																																																																																																																																																																																																																					
148																																																																																																																																																																																																																																																																																																																																																					
149																																																																																																																																																																																																																																																																																																																																																					
150																																																																																																																																																																																																																																																																																																																																																					
151																																																																																																																																																																																																																																																																																																																																																					
152																																																																																																																																																																																																																																																																																																																																																					
153																																																																																																																																																																																																																																																																																																																																																					
154																																																																																																																																																																																																																																																																																																																																																					
155																																																																																																																																																																																																																																																																																																																																																					
156																																																																																																																																																																																																																																																																																																																																																					
157																																																																																																																																																																																																																																																																																																																																																					
158																																																																																																																																																																																																																																																																																																																																																					
159																																																																																																																																																																																																																																																																																																																																																					
160																																																																																																																																																																																																																																																																																																																																																					
161																																																																																																																																																																																																																																																																																																																																																					
162																																																																																																																																																																																																																																																																																																																																																					
163																																																																																																																																																																																																																																																																																																																																																					
164																																																																																																																																																																																																																																																																																																																																																					
165																																																																																																																																																																																																																																																																																																																																																					
166																																																																																																																																																																																																																																																																																																																																																					
167																																																																																																																																																																																																																																																																																																																																																					
168																																																																																																																																																																																																																																																																																																																																																					
169																																																																																																																																																																																																																																																																																																																																																					
170																																																																																																																																																																																																																																																																																																																																																					
171																																																																																																																																																																																																																																																																																																																																																					
172																																																																																																																																																																																																																																																																																																																																																					
173																																																																																																																																																																																																																																																																																																																																																					
174																																																																																																																																																																																																																																																																																																																																																					
175																																																																																																																																																																																																																																																																																																																																																					
176																																																																																																																																																																																																																																																																																																																																																					
177																																																																																																																																																																																																																																																																																																																																																					
178																																																																																																																																																																																																																																																																																																																																																					
179																																																																																																																																																																																																																																																																																																																																																					
180																																																																																																																																																																																																																																																																																																																																																					
181																																																																																																																																																																																																																																																																																																																																																					
182																																																																																																																																																																																																																																																																																																																																																					
183																																																																																																																																																																																																																																																																																																																																																					
184																																																																																																																																																																																																																																																																																																																																																					
185																																																																																																																																																																																																																																																																																																																																																					
186																																																																																																																																																																																																																																																																																																																																																					
187																																																																																																																																																																																																																																																																																																																																																					
188																																																																																																																																																																																																																																																																																																																																																					
189																																																																																																																																																																																																																																																																																																																																																					
190																																																																																																																																																																																																																																																																																																																																																					
191																																																																																																																																																																																																																																																																																																																																																					
192																																																																																																																																																																																																																																																																																																																																																					
193																																																																																																																																																																																																																																																																																																																																																					
194																																																																																																																																																																																																																																																																																																																																																					
195																																																																																																																																																																																																																																																																																																																																																					
196																																																																																																																																																																																																																																																																																																																																																					
197																																																																																																																																																																																																																																																																																																																																																					
198																																																																																																																																																																																																																																																																																																																																																					
199																																																																																																																																																																																																																																																																																																																																																					
200																																																																																																																																																																																																																																																																																																																																																					
<table border="1"> <tr><td>201</td><td></td></tr> <tr><td>202</td><td></td></tr> <tr><td>203</td><td></td></tr> <tr><td>204</td><td></td></tr> <tr><td>205</td><td></td></tr> <tr><td>206</td><td></td></tr> <tr><td>207</td><td></td></tr> <tr><td>208</td><td></td></tr> <tr><td>209</td><td></td></tr> <tr><td>210</td><td></td></tr> <tr><td>211</td><td></td></tr> <tr><td>212</td><td></td></tr> <tr><td>213</td><td></td></tr> <tr><td>214</td><td></td></tr> <tr><td>215</td><td></td></tr> <tr><td>216</td><td></td></tr> <tr><td>217</td><td></td></tr> <tr><td>218</td><td></td></tr> <tr><td>219</td><td></td></tr> <tr><td>220</td><td></td></tr> <tr><td>221</td><td></td></tr> <tr><td>222</td><td></td></tr> <tr><td>223</td><td></td></tr> <tr><td>224</td><td></td></tr> <tr><td>225</td><td></td></tr> <tr><td>226</td><td></td></tr> <tr><td>227</td><td></td></tr> <tr><td>228</td><td></td></tr> <tr><td>229</td><td></td></tr> <tr><td>230</td><td></td></tr> <tr><td>231</td><td></td></tr> <tr><td>232</td><td></td></tr> <tr><td>233</td><td></td></tr> <tr><td>234</td><td></td></tr> <tr><td>235</td><td></td></tr> <tr><td>236</td><td></</td></tr></table>		201		202		203		204		205		206		207		208		209		210		211		212		213		214		215		216		217		218		219		220		221		222		223		224		225		226		227		228		229		230		231		232		233		234		235		236	</																																																																																																																																																																																																																																																																												
201																																																																																																																																																																																																																																																																																																																																																					
202																																																																																																																																																																																																																																																																																																																																																					
203																																																																																																																																																																																																																																																																																																																																																					
204																																																																																																																																																																																																																																																																																																																																																					
205																																																																																																																																																																																																																																																																																																																																																					
206																																																																																																																																																																																																																																																																																																																																																					
207																																																																																																																																																																																																																																																																																																																																																					
208																																																																																																																																																																																																																																																																																																																																																					
209																																																																																																																																																																																																																																																																																																																																																					
210																																																																																																																																																																																																																																																																																																																																																					
211																																																																																																																																																																																																																																																																																																																																																					
212																																																																																																																																																																																																																																																																																																																																																					
213																																																																																																																																																																																																																																																																																																																																																					
214																																																																																																																																																																																																																																																																																																																																																					
215																																																																																																																																																																																																																																																																																																																																																					
216																																																																																																																																																																																																																																																																																																																																																					
217																																																																																																																																																																																																																																																																																																																																																					
218																																																																																																																																																																																																																																																																																																																																																					
219																																																																																																																																																																																																																																																																																																																																																					
220																																																																																																																																																																																																																																																																																																																																																					
221																																																																																																																																																																																																																																																																																																																																																					
222																																																																																																																																																																																																																																																																																																																																																					
223																																																																																																																																																																																																																																																																																																																																																					
224																																																																																																																																																																																																																																																																																																																																																					
225																																																																																																																																																																																																																																																																																																																																																					
226																																																																																																																																																																																																																																																																																																																																																					
227																																																																																																																																																																																																																																																																																																																																																					
228																																																																																																																																																																																																																																																																																																																																																					
229																																																																																																																																																																																																																																																																																																																																																					
230																																																																																																																																																																																																																																																																																																																																																					
231																																																																																																																																																																																																																																																																																																																																																					
232																																																																																																																																																																																																																																																																																																																																																					
233																																																																																																																																																																																																																																																																																																																																																					
234																																																																																																																																																																																																																																																																																																																																																					
235																																																																																																																																																																																																																																																																																																																																																					
236	</																																																																																																																																																																																																																																																																																																																																																				

FIGURES (5)

Figure

- | | | |
|----|--------------------|---|
| 1 | 19-058-624/ORD-58 | Charger, Magazine |
| 2 | 19-058-625/ORD-58 | Trigger, Winter Auxiliary |
| 3 | 19-058-626/ORD-58 | Wrench, Gas Cylinder, Plug |
| 4) | SA-H38557, Sheet 2 | Sectional Views of Rifle, Caliber
.30, T44E5 (M15) |
|) | | |
|) | | |
| 5) | SA-H38557, Sheet 3 | |

RAMMER - D7267632



BODY, ASSY - D7267673

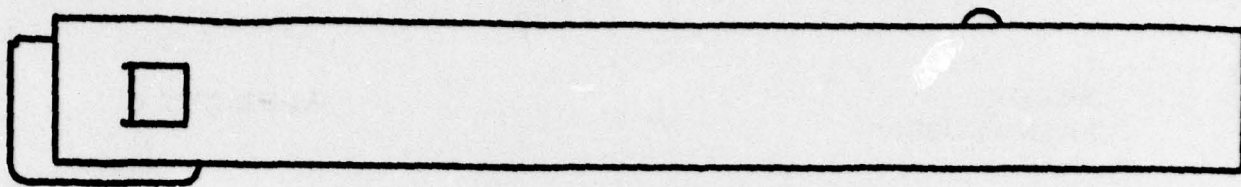


Fig. 1 - Charger, Magazine

19-058-624/080-58

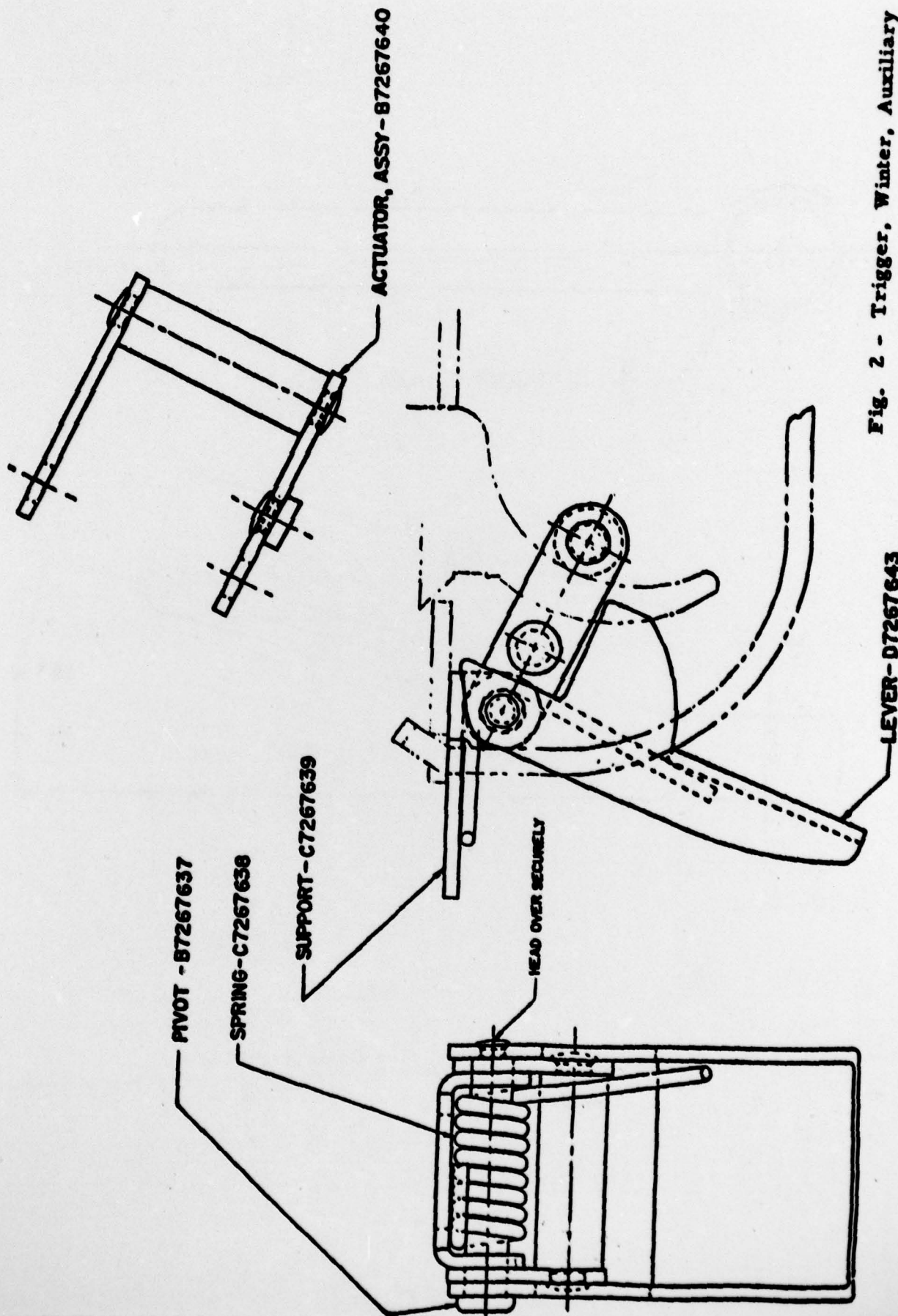


Fig. 2 - Trigger, Winter, Auxiliary
19-058-625/CED-58

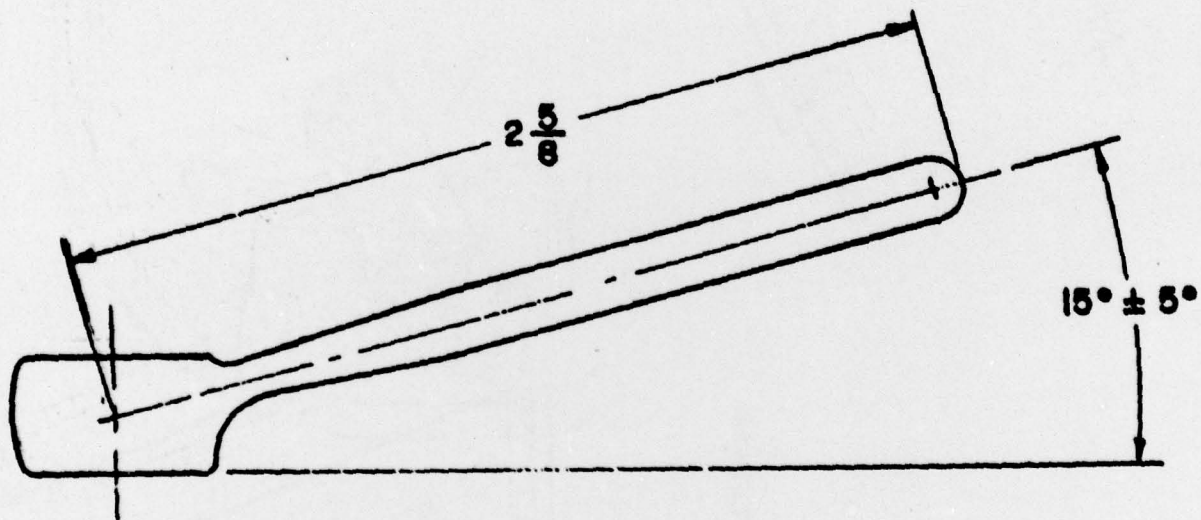
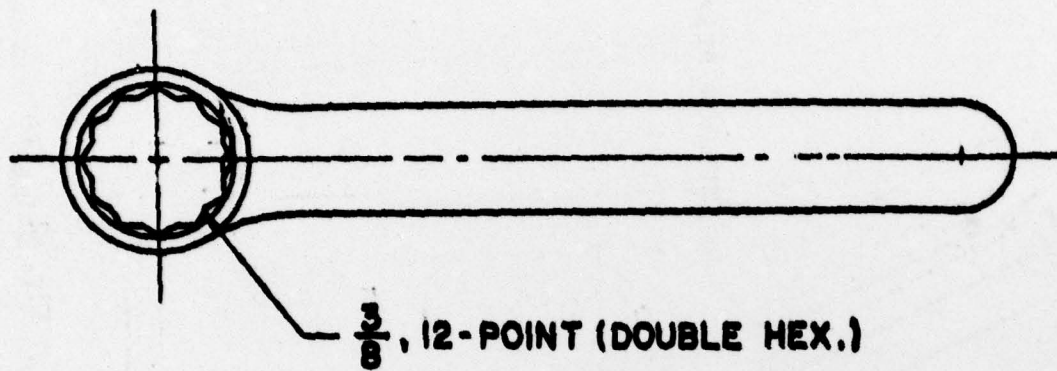


Fig. 3 - Wrench, Gas Cylinder, Plug
19-058-626/ORD-58