

AD-A056 213

NATIONAL MILITARY COMMAND SYSTEM SUPPORT CENTER WASH--ETC F/8 9/2
NMCS INFORMATION PROCESSING SYSTEM 360 FORMATTED FILE SYSTEM (N--ETC(U)
JUN 75

UNCLASSIFIED

NMCSSC-CSM-UM-15-74-V9-1/

NL

1 OF 2

AD
A056213

100
 100
 100



DEFENSE COMMUNICATIONS AGENCY
NATIONAL MILITARY COMMAND SYSTEM
SUPPORT CENTER
WASHINGTON, D. C. 20301

NMCS Information Processing System
360 Formatted File System (NIPS 360 FFS)
Users Manual. Volume IX. Error
Codes. Changes 1, 2, and 3.

11 June 1975

IN REPLY
REFER TO:

TO: DISTRIBUTION

-AD-A002953

SUBJECT: Change 1 to CSM UM 15-74, Error Codes
Volume IX, dated 15 October 1974

LEVEL III

1. Insert the enclosed change pages and destroy the replaced pages according to applicable security regulations.
2. A list of Effective Pages to verify the accuracy of this manual is enclosed. This list should be inserted before the title page.
3. When this change has been posted, make an entry in the Record of Changes on the inside cover.

FOR THE COMMANDER:

40 Enclosures
Change 1 pages

[Signature]
J. DOUGLAS POTTER
Chief, Military Personnel
and Administrative
Services Office

DDC
RECEIVED
JUN 14 1975
A

DISTRIBUTION STATEMENT A
Approved for public release;
Distribution Unlimited

J No. AD A056213
DC FILE COPY

243 000

JOB

EFFECTIVE PAGES - 1 June 1975

This list is used to verify the accuracy of CSM UM 15-74, Volume IX, after change pages have been inserted. Original pages are indicated by the letter O, change 1 by the numeral 1.

<u>Page No.</u>	<u>Change No.</u>
TITLE	O
ii	O
iii - iv	1
v - 42	O
43 - 48	1
49 - 72	O
73 - 74	1
74.1 - 74.2	1
75 - 252	O
253 - 254	1
255 - 274	O
275 - 278	1
278.1 - 278.2	1
279 - 280	O
281 - 288	1
288.1 - 288.2	1
289 - 308	O
309 - 312	1
312.1 - 312.2	1
313 - 342	O
343 - 344	1
344.1 - 344.2	1
345 - 373	O

ACCESSION for	
NTIS	DATE INDEXED <input checked="" type="checkbox"/>
DOC	DATE INDEXED <input checked="" type="checkbox"/>
UNANNOUNCED	<input checked="" type="checkbox"/>
JUSTIFICATION	<input checked="" type="checkbox"/>
BY	
DISTRIBUTION/AVAILABILITY CODES	
Dist.	AVAIL. END/SP. SPECIAL
A	

CONTENTS

Section		Page
	ACKNOWLEDGMENT.....	ii
	ABSTRACT.....	vi
1	INTRODUCTION.....	1
2	FILE STRUCTURING ERROR CODES.....	2
2.1	Advisory Messages.....	3
2.2	Error Messages.....	12
2.3	Special Messages.....	34
2.4	Abnormal End Error Messages (USEF)..	36
# 2.5	Index Specification Messages.....	39
2.6	File Revision Control Card Edit Messages.....	43
2.7	File Revision Processing Error Messages.....	44
2.8	File Revision Advisory Messages.....	47
3	FILE MAINTENANCE ERROR CODES.....	48
3.1	FM Edit and Library Action Errors...	48
# 3.2	FM Proper Error Messages.....	69
3.3	NFL Logic Statement Errors.....	79
3.4	FM User ABEND Codes.....	94
3.5	Index Maintenance Errors.....	112
4	RETRIEVAL AND SORT PROCESSOR ERROR CODES.....	117
4.1	CXX Series Edit Diagnostics -- General.....	118
4.2	1XX Series-Control Division Statements (FILE, EXECUTE, DELETE)...	119
4.3	2XX Series-TITLE Statements.....	131
4.4	3XX Series-LIMIT Statements.....	136
4.5	36XX Series - KEYWORD Statement.....	149
4.6	4XX Series-IF and FURTHER Statements	150
4.7	5XX Series-Library Actions.....	173
4.8	6XX Series-SORT Statements.....	177
4.9	7XX Series-SELECT Statements.....	183
4.10	8XX Series-Retrieval Proper Messages	185
4.10.1	Termination Messages.....	185
4.10.2	Record Qualification Error Messages.....	192
4.10.3	End-of-Job Information Message Errors.....	193
4.11	9XX Series-Keywrd Statements and Edit Flag.....	194

Section		Page
4.12	Index Processing Messages.....	199
4.13	EASP User ABEND Codes.....	205
5	OUTPUT PROCESSOR ERROR CODES.....	206
5.1	EIT Specification Error Messages....	207
5.2	Control and Program Error Messages..	227
5.3	OP User ABEND Codes.....	239
5.4	Post-Publish List.....	242
6	TERMINAL PROCESSING COMPONENT.....	243
6.1	TP Monitor/Supervisor.....	243
6.1.1	Normal Progress Messages.....	243
6.1.2	Warnings and Errors.....	244
6.1.2.1	While Paging Through Output.....	244
6.1.2.2	In Response to a TX Program Request.	245
6.1.2.3	In Response to a Line of Input Other Than Paging Commands.....	246
6.1.3	System Operator's Console - TP Monitor/Supervisor Advisory/Diagnostic Messages.....	247
6.1.4	TP Monitor/Supervisor ABEND Codes...	248
6.1.5	DUMP Error Messages.....	249
6.1.6	ELAST Error Messages.....	251
6.1.7	UTILITY ERROR Messages.....	252
6.2	QUIP Error Messages.....	253
# 6.2.1	QUIP Error Diagnostic Messages.....	253
6.2.2	QUIP Control and Program Messages...	279
6.2.3	QUIP User ABEND Codes.....	285
6.2.4	Secondary Indexing and Keyword Indexing in QUIP.....	286
6.3	SODA Error Messages.....	286
6.4	EDIT Error and Diagnostic Messages.....	288.2
# 6.4.1	EDIT Component Error Messages.....	288.2
6.4.2	CCEDIT Error Messages.....	321
6.4.3	Batch Component TP Error Messages...	322
7	UTILITY COMPONENT ERROR CODES.....	324
7.1	11XX Series-TABGEN Utility Error Codes.....	324
7.2	12XX Series-SUBLDE Utility Error Codes.....	333
7.3	13XX Series-Data Conversion Error Codes.....	335
7.4	14XX Series-UTELDISM Utility Error Codes.....	337
# 7.5	15XX Series-UTBLDSAM Utility Error Codes.....	340
7.6	16XX Series-UTQRTQIF Utility Error Codes.....	343

ERROR CODES

3331 DUPLICATE SPECIFICATION OF AAAA OPTION

Cause - An INDEX KEYWORD statement has specified more than one name defining the same function (e.g., dictionary, etc.).

Action - Check the SUE/TAE and index statements to make sure everything was defined correctly.

#34XX NOTE: Refer to paragraph 3.5 (Index Maintenance Messages) for 34XX messages encountered while using the Index Specification utility.

There is one ABEND in Index Specification - Code 9. This occurs only under extremely severe error conditions. Consult the system programmer.

2.6 File Revision Control Card Edit Messages

Error messages immediately follow the printout of an erroneous control card and indicate the type of error that was encountered in the control card. If no errors are detected during editing, a confirmation message is printed.

1000 NC RIGHT PAREN AFTER LEFT PAREN.

Cause - Unbalanced parenthesis in a control statement.

Action - Correct the erroneous card and resubmit the job.

1001 NC LEFT PAREN BEFORE RIGHT PAREN.

Cause - Unbalanced parenthesis in a control statement.

Action - Correct the erroneous card and resubmit the job.

1002 TERM EXCEEDS 16 CHAR MAX.

Cause - Illegal parameter or operand in a control statement.

ERROR CODES

Action - Correct the card and resubmit the job.

1003 NO FILE NAME SPECIFIED.

Cause - The OLDFILE or FILE parameter was omitted in the control deck.

Action - Specify the file name using the CLIFILE or FILE parameter and resubmit the job.

1004 FIELD XXXXXX NOT FOUND IN OLD FFT.

Cause - Either the user punched a field name in his field change information that did not exist in the old FFT, or he has extraneous information punched in his control deck that FR interpreted as field name change information.

Action - Correct the FR input deck and resubmit the job.

2.7 File Revision Processing Error Messages

These messages are indicative of processing errors that cause the File Revision program to terminate.

2000 ERROR DURING SORT - CALLED FROM ROUTINE FBSUP.

Cause - This message will occur if System/360 CS sort returns a condition code indicating an error was encountered while performing the sort.

Action - Try job. If error persists, contact system programmer.

2001 INVALID NAME CHANGE.

Cause - This message follows an entry in the FFT comparison list. It indicates that a field name change request could not be processed because the new field name could not be found in the new FFT.

ERROR CODES

- Action - Correct the erroneous field change information and resubmit the run.
- 2002 ILLEGAL MODE CHANGE TC/PRCM COORD.
- Cause - The user attempted to change a coordinate field to a binary or decimal field or to change a binary or decimal field to a coordinate field. These changes are illogical.
- Action - Correct the new FFT and restructure the new file, or correct the field change card that caused the error, and rerun the job.
- 2003 CORE NOT AVAILABLE.
- Cause - The File Revision program could not obtain sufficient core space for one of its internal tables.
- Action - Rerun the job in a larger partition or region.
- 2004 ILLEGAL RETURN CODE.
- Cause - This is indicative of a program error.
- Action - See the system programmer.
- 2005 I/O ERROR - 'FILE NAME'.
- Cause - This message indicates that an I/O error occurred when reading or writing the indicated file.
- Action - Resubmit the job. If error persists, see system programmer.
- 2006 FIELD CHANGE CAUSIS SET MERGE.
- Cause - PR detected that changes in field set numbers cause data from two sets to be moved to one set. PR cannot logically revise the file. This

ERROR COLES

situation could result from the structure of the new FFT, or from field name change requests.

- Action - Correct the situation and resubmit the job. If the user can logically connect the sets, he should run FF in the NC-CO mode, punch the generated statements and adjust them, as required, to perform the desired revision.

2007 TWO OLD FIELDS MOVED TO ONE FIELD.

- Cause - The user has specified a field name change, with a new name that exists in both files.

- Action - Correct either the new FFT or the field name change information, and resubmit the job.

2008 NC MAJOR CTL FLD RETAINED.

- Cause - The user has deleted all major control fields. This may happen if control fields are renamed in new FFT and field name change cards have not been provided.

- Action - Correct FR input deck or new FFT and resubmit the job.

2009 ILLEGAL MERGE-FIXED TO PER SET.

- Cause - FR detected that a change in a field set number would cause data from the fixed set to be moved to a periodic set. FR cannot logically revise the file.

- Action - Correct the situation and resubmit the job.

2010 FR ENDED DUE TO FM LS COMPILE ERRORS.

- Cause - FR detected that FM encountered one or more compilation errors during library actions being performed on FR generated logic statements.

ERROR CODES

Action - Consult system programmer.

2011 NO LOGIC STATEMENTS TO BE COMPILED

Cause - FR did not generate any logic statements to be passed to FM.

Action - Consult system programmer.

2.8 File Revision Advisory Messages

RUN CANCELLED BECAUSE OF FIELD CHANGE ERRORS

Cause - This advisory message is printed just prior to termination. Specific field change errors are identified by individual messages.

Action - Correct errors noted by each message and resubmit the job.

NO ERRORS DETECTED IN INPUT CARDS

Cause - Message confirms corrections of control deck.

Action - No action required.

NO GO OPTIONS SPECIFIED-PR RUN TERMINATED

Cause - Self-explanatory.

Action - No action required.

THIS PAGE IS BEST QUALITY PRACTICABLE
FROM COPY FURNISHED TO DDC

ERROR CODES

Section 3

FILE MAINTENANCE

ERROR CODES

A numerical listing of all error codes and messages output from the File Maintenance (FM) program is contained in this section. Each error message is followed by the cause of the error and the appropriate action to be taken to correct the error condition. If the file being maintained is indexed, the error codes listed in 3.5, Index Maintenance Errors, are applicable.

3.1 FM Edit and Library Action Errors

10000 ABNORMAL TERMINATION OF RUN DUE TO MISSING OR
INVALID CONTROL CARD.

Cause - Either the FMS control card contained errors,
or the control card was not the first card in
the input stream.

Action - Correct, or include, the card as the first
card in the input stream and rerun the job.

10001 THE STATEMENT CONTAINS AN ILLEGAL FILE NAME.

Cause - The name of the file does not conform to
system standards for data file name. Names
must contain from one to seven characters with
no special characters; the first character
must be alphabetic.

Action - Correct the name to conform to system
standards and rerun the job.

ERROR CODES

- Cause - The fixed set had not been created.
- Action - Create the fixed set before attempting direct subset updating or the recrd.
- 51005 TOO MANY RANGE TRANSACTIONS; RUN TERMINATED.
- Cause - More than 75 range transactions were processed.
- Action - Break the run into two or more FM runs.
- 51006 DUPLICATE SUBSET GENERATED BY MCS.
- Cause - The user attempted to change the control field of an existing subset such that it would become a duplicate.
- Action - The existing subset control field is left unchanged. Any other fields in that subset which were changed will remain changed. The subset whose control fields matched the duplicate is unchanged. Correct the transaction and resubmit the job.
- 51008 DUPLICATE SUBSET GENERATED BY MCS
- Cause - The user attempted to change the control field of a new subset such that it would become a duplicate.
- Action - The new subset is deleted. The subset whose control field matched the duplicate is unchanged. Correct the transaction and resubmit the job.
- 51501 KEYWORD FIELD NNN MEMBER NOT IN IIERAFY - Z
WHERE NNN IS THE FIELD ID AND Y IS A MEMBER
ID:
- 1 - Scan Subroutine
 - 2 - Stop Word Table
 - 3 - Dictionary

ERROR CODES

- Cause - Self-explanatory.
- Action - See the system programmer; use CTNDXSPC to delete and add the field index for proper index data maintenance.
- 51503 KEYWORD FIELD NNN MEMBER LOAD FAILURE - X
WHERE NNN IS THE FIELD ID AND X IS A MEMBER ID:
- 1 - Scan Subroutine
 - 2 - Stop Word Table
 - 3 - Dictionary
- Cause - Self-explanatory.
- Action - See the system programmer; use UTNDXSPC to delete and add the field index for proper index data set maintenance.
- 51505 INSUFFICIENT CODE FOR SUBROUTINE.
- Cause - Self-explanatory.
- Action - See the system programmer.
- #51506 ATTEMPT TO CONVERT INVALID COORD DATA.
- Cause - Invalid coordinate data was supplied to a compare instruction.
- Action - Make sure data, mode of data, and address of data is correct. If error persists, see systems programmer.
- 51507 SUBROUTINE NOT FOUND IN LIBRARY.
- Cause - Self-explanatory.
- Action - Add subroutine to library and resubmit the affected transactions.
- 51509 INVALID SUBROUTINE OUTPUT FOR 'TEI' 'VAI', AND 'GEN' INSTRUCTIONS. LCG WAS SPECIFIED.

ERROR CODES

Cause - Self-explanatory.

Action - Since the instruction specified the logging action, no action is needed.

ERROR CODES

Action - Determine proper operand format and re-enter.

CP COMMAND UNSUCCESSFUL

Cause - A requested CP COMMAND WAS ISSUED BY NIPS TP, however, the command was not executed successfully by the CP/67.

Action - Determine cause for unsuccessful execution and reenter.

CP COMMAND EXECUTED

Cause - A request to issue a CP/67 command was processed successfully.

Action - None.

INVALID CP COMMAND

Cause - A request was made to issue an invalid CP command.

Action - Determine proper format and reenter.

6.2 QUIP Error Messages

QUIP error messages consist of two categories of messages as follows:

6.2.1 QUIP Error Diagnostic Messages

Quick Inquiry Processor (QUIP) error diagnostic messages are displayed in the following format:

S	C	I	DIAGNOSTICS
sss	ccc	1	Message-----
			Message crrt'd-----

ERROR CODES

where

- sss = the source statement (input line) number.
- ccc = points to the high-order character position of the term in error or to an operator with invalid operands.
- l = the error level code which is interpreted as follows:
- 0- advisory message
 - 1- warning, default assumed, will execute
 - 2- minor error, error scan will continue, query will not be executed
 - 4- major error, will attempt to continue error scan, query will not be executed
 - 8- terminal error, serious error which will cause run to be terminated.

The error messages are, in general, self-explanatory. Cause and corrective action are implied. Selective messages have further explanation of the use of statement and character number pointers.

Error Diagnostic Messages are as follows:

000 INVALID CHARACTER IN INPUT STREAM
 IGNORED.

001 QUIP WAS UNABLE TO ALLOCATE A DYNAMIC
 SCRATCH DATA SET (SEE NOTE).

Note: The statement number is used to indicate data set

THIS PAGE IS BEST QUALITY PRINTING
FROM COPY FURNISHED TO DDC

ERROR CCDES

THIS PAGE IS BEST QUALITY PRACTICABLE
FROM COPY FURNISHED TO DDC

209 INVALID FIELD NAME - KEYWORD FIELDNAMES
 MUST BE DEFINED AS KEYWORD INDEXED
 FIELDS.

210 SYNTAX ERROR - UNBALANCED PARENTHESIS.

211 SYNTAX ERROR - INVALID OPERATOR, INCLUDES
 IS ONLY LEGAL OPERATOR FOR KEYWORD
 STATEMENT.

212 SYNTAX ERROR - DATA VALUE OF KEYWORD
 STATEMENT NOT SELF-DEFINING TERM OR
 LITERAL.

213 ILLEGAL KEYWORD STATEMENT. EITHER MORE
 THAN ONE KEYWORD STATEMENT IS PRESENT OR
 IT IS AFTER THE IF STATEMENT.

214 INVALID OPERATOR - FIELD NAME
 COMBINATION. CONTAINS NOT ALLOWED ON
 NUMERIC FIELDS.

#215 INVALID SYNTAX - USER DEFINED SUM LENGTH
 INVALID.

#216 INVALID FILE ACCESS - USER DOES NOT HAVE
 PROPER PERMISSION TO ACCESS FILE. QUIP
 TERMINATED.

#217 CPT MSG GENERATED BY VALIDATION ROUTINE.
 MSG SAVED IN TCT AE4/AFA BY IPT20C.

#218 INVALID NAME - THE NAME FOR THE SUBFILE
 IS NOT A VALID NAME.

#219 ALLOCATION ERROR - ALLOCATION OF THE
 SUBFILE DATA SET WAS NOT SUCCESSFUL.

220 THE SECONDARY INDEXING FEATURE OF
 RETRIEVAL WILL BE BYPASSED. THE REASON
 CODE IS PRINTED IN THE STATEMENT NUMBER
 COLUMN.

ERROR CODES

Note: Codes are:

- 1 - There are no Index Field Descriptor Records in the file even though the file B-record indicates the file is indexed. This is a system error.
- 2 - There is no ccre available for the Secondary Indexing work area. Increase the regicr size.

#221	DATA SET NOT FOUND - THE REQUESTED SUBFILE COULD NOT BE LOCATED.
#222	DUPLICATE SUBFILE NAME - THE NAME SPECIFIED FOR THE SUBFILE HAS ALREADY BEEN ASSIGNED.
#223	INVALID USE OF OPERATOR - ONLY ONE SUBFILE OPERATOR IS ALLOWED IN A QUERY.
#224	INVALID REQUEST - 'SUBFILE' IS STATEMENT NOT FOUND.
#225	INVALID USE OF OPERATOR - THE SUBFILE OPERATOR WAS USED WITHOUT A RETRIEVAL TYPE OPERATOR IN THE QUERY.
#226	TERMINAL ID VIOLATION - THE SUBFILE CANNOT BE ACCESSED FROM THIS TERMINAL.
#227	END CALL TO INSTALLATION VALIDATION SUBROUTINE.
#228	INVALID COORDINATE OVERLAP - POINT TO POINT, LINE TO POINT, AND POINT TO LINE COMPARISONS ILLEGAL WITH OVP OPERATOR.
229	SYSTEM LIMITS EXCEEDED - THE MAXIMUM NUMBER OF FUNCTION ARGUMENTS HAS BEEN EXCEEDED.

ERROR CODES

**THIS PAGE IS BEST QUALITY PRACTICABLE
FROM COPY FURNISHED TO DDG**

- 230 INVALID REQUEST - THE FUNCTION ARGUMENT
 MAY NOT BE FROM THE 'SCRTKEY' OR THE
 RESULT OF A 'COMPUTE' OPERATOR.
- 231 SYNTAX ERROR - INVALID FUNCTION PARAMETER
 LIST ENTRY.
- 232 SYNTAX ERROR - A MAJOR SYNTAX ERROR
 OCCURRED IN THE FUNCTION PARAMETER
 STRING.
- 233 FUNCTION NOT LOCATED - THE REQUESTED
 FUNCTION CAN NOT BE LOCATED.
- 234 INVALID USE OF COORDINATE LITERAL - THE
 FIELD AGAINST WHICH THE LITERAL IS TO BE
 COMPARED MUST BE EITHER A LATITUDE OR A
 LONGITUDE.
- 235 WARNING - OBJECT IS LONGER THAN BINARY
 FIELD AGAINST WHICH IT IS TO BE COMPARED.
 CONVERSION OF OBJECT TO INTERNAL FORMAT
 HAS PERMITTED RETRIEVAL TO PROCEED
 NORMALLY.
- 236 WARNING - LEADING ZEROS OR ALGEBRAIC SIGN
 CAUSED INPUT LITERAL TO EXCEED LENGTH OF
 FIELD AGAINST WHICH IT IS TO BE COMPARED.
 ZEROS HAVE BEEN TRUNCATED OR THE SIGN HAS
 BEEN INCORRECTLY SET.
- 237 CONVERSION SUBROUTINE ERROR - ERROR
 OCCURRED DURING EXECUTION OF SPECIFIED
 INPUT SUBROUTINE.
- 238 CONVERSION SUBROUTINE ERROR - ERROR
 OCCURRED DURING EXECUTION OF SPECIFIED
 INPUT SUBROUTINE.
- 239 CONVERSION SUBROUTINE ERROR - ARGUMENT OF
 INPUT SUBROUTINE EXCEEDS MAXIMUM SIZE
 EXPECTED BY THAT ROUTINE.

ERROR CODES

- 240 CONVERSION SUBROUTINE ERROR - MODE OF
FUNCTION FROM INPUT SUBROUTINE CONFLICTS
WITH THAT OF SUBJECT FIELD.
- 241 CONVERSION SUBROUTINE ERROR - QUIP DOES
NOT PRESENTLY SUPPORT INPUT SUBROUTINES
WHOSE ARGUMENTS ARE BINARY OR COORDINATE.
- 242 CONVERSION SUBROUTINE ERROR - THE
FUNCTION FROM THE SPECIFIED INPUT
SUBROUTINE EXCEEDS SIZE OF FIELD (AFTER
APPLYING PARTIAL FIELD NOTATION IF
SPECIFIED).
- 243 INVALID COORDINATE LITERAL - COORDINATE
LITERAL IS OF IMPROPER FORM.
- 244 INVALID USE OF GEOGRAPHIC OPERATOR -
GEOGRAPHIC OPERATORS REQUIRE SUBJECTS IN
COORDINATE MODE.
- 245 INVALID LITERAL - THE LITERAL USING THE
UNIVERSAL MATCH CAPABILITY IS LONGER THAN
THE FIELD AGAINST WHICH IT IS TO BE
COMPARED (AFTER APPLICATION OF PARTIAL
FIELD NOTATION IF SPECIFIED).
- #246 INVALID USE OF UNIVERSAL MATCH
CAPABILITY. THE UNIVERSAL MATCH
CAPABILITY MAY NOT BE APPLIED WITH
LITERALS REQUIRING INPUT SUBROUTINES.
- 247 INVALID USE OF UNIVERSAL MATCH CAPABILITY
- THE \$ MAY NOT BE USED AS A UNIVERSAL
MATCH CHARACTER AGAINST BINARY OR
COORDINATE FIELDS.
- 248 INVALID LITERAL - LITERALS CONTAINING
SPECIAL CHARACTERS MUST BE ENCLOSED IN
SINGLE QUOTES.
- 249 INVALID COORDINATE LITERAL - COORDINATE
LITERAL CONTAINS INVALID CHARACTER.

ERROR CODES

THIS PAGE IS BEST QUALITY PRACTICABLE
FROM COPY FURNISHED TO DDC

- 250 INVALID NUMERIC LITERAL - NUMERIC LITERAL
CONTAINS INVALID NONDIGIT CHARACTER.
- 251 INVALID USE OF COORDINATE LITERAL -
COORDINATE LITERALS ARE REQUIRED TO BE
EITHER A LATITUDE OF A LONGITUDE WHEN NOT
APPEARING AS THE OBJECT OF A GEOGRAPHIC
OPERATOR.
- 252 INVALID NUMERIC LITERAL - BINARY AND
DECIMAL LITERALS MAY NOT BE ENCLOSED IN
QUOTES.
- 253 IF STATEMENT EFFECT - ONLY TWO SETS MAY BE
REFERENCED IN A SINGLE CLAUSE. IF TWO
ARE REFERENCED ONE MUST BE THE FIXED SET.
- 254 IF STATEMENT EFFECT - SUBJECT AND OBJECT
MODES ARE NOT COMPATIBLE. ALPHA DECIMAL
AND COORDINATE SUBJECTS REQUIRE ALPHA,
DECIMAL AND COORDINATE OBJECTS,
RESPECTIVELY. BINARY SUBJECTS REQUIRE
BINARY OR DECIMAL OBJECTS.
- 255 FEATURE NOT YET AVAILABLE - THIS FEATURE
HAS NOT YET BEEN MADE AVAILABLE IN QUIP.
- #256 INVALID SUBFILE RESTART - SUBFILE ALREADY
ACTIVE. SIGNON REQUIRED FIRST.
- #257 SUBFILE RESTART FAILURE - CANNOT LOCATE
REQUESTED DATA SET.
- #258 INVALID SUBFILE RESTART - SIGNON MUST BE
FIRST AND ONLY STATEMENT.

ERROR CODES

THIS PAGE IS BEST QUALITY PRACTICABLE
FROM COPY FURNISHED TO DDC

- 1011 SYSTEM ERROR. COULD NOT LOCATE THE
 COMPLETE IF/FINL STATEMENT ON SYSUT1 FOR THE
 SECONDARY INDEXING EXECUTIVE (IFXIXF).
- Cause - A record was read from SYSUT1 containing a
 continuation indicator; however, another
 record with the same read-back key could not be
 found.
- Action - Contact system maintenance for further analysis.
- 1020 NO RECORDS PASSED THE LIMITS.
- Cause - The query LIMIT statement excluded all records.
- 1021 NO RECORDS QUALIFIED.
- Cause - No records met the conditions of the query.
- 1039 PESIZE PARAMETER WAS ENTERED INCORRECTLY ON
 THE EXEC CARD. SIZE DEFAULTED TO 10000 BYTES.
- Cause - Self-explanatory.
- Action - The correct format is:
- PARM='PE=nK' or PARM='PESIZE=nK'
 where 'n' is between 1 and 99.
- 1040 PERMANENT I/O ERROR WHILE PROCESSING VOLUME
 CONTAINING IIEFIEY.
- Cause - Error detected during execution of the OBTSIN
 macro.
- Action - Ferun job and contact customer engineer if error
 is repeated.
- 1041 PROCESS BLOCK EXCEEDS MAX SIZE. FIELD SET FOR
 BLOCK IS - (1st 56 characters).
- Cause - The processing block for the specified record
 exceeded the PBSIZE indicated on the EXEC card,

ERROR CODES

or, if the FBSIZE was not specified, the block exceeded the default size of 10K bytes.

Action - Increase the FBSIZE on the EXEC card. The format is:

PARM='FB=nK' or PARM='FBSIZE=nK'
where 'n' is between 1 and 99.

1042 REQUIRED VOLUME OF LIBRARY NOT MOUNTED.

Cause - Self-explanatory.

Action - Rerun job with complete operator instructions.

1043 LIBRARY DATA SET NOT FOUND ON SPECIFIED VOLUME.

Cause - The data set was either scratched, not kept, or not generated, or the wrong volume was specified on the DD card.

Action - Correct the JCL or rebuild the data set.

1044 I/O ERROR ON QLF.

Cause - Self-explanatory.

Action - Rerun job.

1045 I/O ERROR ON QRT.

Cause - Self-explanatory.

Action - Rerun job.

1046 RUN TERMINATED BY SYSTEM CODE nnn.

Cause - Self-explanatory.
(MSG. generated by QIPERR)

Action - See System Maintenance Programmer.

#1050 RUN TERMINATED BY SYSTEM CODE

ERRCR CODES

THIS PAGE IS BEST QUALITY PRACTICABLE
FROM COPY FURNISHED TO DDC

- Cause - Self explanatory. (MSG. generated by QIPERR)
Action - See System Maintenance Programmer.
- 1051 UNABLE TO OPEN filename.
- Cause - Self-explanatory. (MSG. generated by QIPERR)
Action - Correct the problem and rerun.
- 1052 UNABLE TO MOUNT filename.
- Cause - Self-explanatory (MSG. generated by QIPERR.)
Action - Correct the problem and rerun.
- 1053 QUIP TERMINATED BY USER ABEND CODE rrrr.
- Action - See Section 6.2.3, QUIP User ABEND Codes, for
 explanation.
- 1054 UNABLE TO OPEN DDNAME SYSIN.
- Cause - Self-explanatory.
Action - Correct the problem and rerun.
- 1055* INSUFFICIENT CORE FOR EXPANSION OF
 COMPRESSION/ COMPACTION DATA RECORDS.
 INCREASE REGION 2K.
- Cause - The problem occurred in the NIPS system
 subroutine IPEDPE when an attempt was made to
 obtain core for the expansion of a C/C record.
- Action - Increase region size and rerun the job.
- 1056 QUERYLIB DD STMT NO LONGER USED TO STORY
 QUERY. NO LIBRARY ACTION TAKEN.
- Cause - The user attempted to store a query by using
 the defunct QUERYLIB DD statement.

ERROR CODES

Action - See Section 10, Utility Support, Volume VII of the NIPS Users Manual for the procedure for storing the query.

#1057 SUBFILE PDS SPACE EXCEED - D37.

Cause - A subfile PDS WRITE resulted in a system D37 ABEND.

Action - SIGNOFF to scratch the existing PDS, then SIGNON with SUBFILE to allocate a new PDS. If this error occurs frequently, see the system programmer to allocate more space for the PDS.

#1058 NO DIRECTORY SPACE AVAILABLE FOR SUBFILE PDS. SUBFILE NOT CREATED.

Cause - The directory of the subfile partitioned data set has been filled. No entry could be made for the requested subfile.

Action - No new subfile can be added to the subfile partitioned data set. See systems programmer concerning the allocation of more directory space for future subfile processing.

#1059 I/O ERROR UPDATING DIRECTORY OF SUBFILE PDS. SUBFILE NOT CREATED.

Cause - An attempt to update the directory of the subfile partitioned data set resulted in an I/O error.

Action - Rerun the query. If the problem persists, contact system maintenance for further analysis.

#1060 CATALOG OF PDS NOT SUCCESSFUL. SIGNON RECOVERY WILL NOT BE POSSIBLE.

Cause - An attempt to catalog the subfile partitioned data set just allocated failed.

ERROR CODES

THIS PAGE IS BEST QUALITY PRACTICABLE
FROM COPY FURNISHED TO DDC

Action - Subfile creation and processing can proceed, but in the event a restart of the TF control program is required the subfile PDS previously created will not be available.

#1061 DUPLICATE SUBFILE NAME. SUBFILE NOT CREATED.

Cause - The name assigned to the subfile to be created by the current query has already been assigned to a subfile that is a member of this PDS.

Action - Change the name of the subfile and execute the query again.

6.2.3 QUIP User ABEND Codes

QUIP may generate the following user ABEND codes:

001- A system ABEND 0C1 through 0CF has been intercepted by QUIP Executive SPIE.

002- A system ABEND 0C1 through 0CF has been intercepted by Translator Executive SPIE.

003- QUIP system error.

Occurrence of these ABENDs will require assistance of System Maintenance Programmer for correction.

When a user has entered an invalid file classification at a terminal, the CLASSIFICATION ERROR message will be displayed and the run will be terminated. When operating in the batch partition, the following message will be displayed on the computer operator's console:

XXX WARNING *** JOB jobname STEP stepname (prcc.stepname)
THE OUTPUT FROM THIS JOB MAY BE INCORRECTLY CLASSIFIED.

The CLASSIFICATION ERROR message will be printed on the output and the report will be printed with the user's classification.

ERRORR CCDES

6.2.4 Secondary Indexing and Keyword Indexing in QUIP

In addition to the errors described in the previous sections, error conditions interpreted by Index Processing may occur. Messages describing these are found in Section 4.12, Index Processing Messages. QUIP uses the same Index Processing and Keyword Processing programs as RASP.

6.3 SODA Error Messages

* THE HOLD FILE IS NEARING CAPACITY. YOU SHOULD UPDATE OR CANCEL ALL SCON.

Cause - Updated records have filled more than 80% of HOLD FILE.

Action - Transactions may still be entered -
UPDATE ALL or CANCEL ALL should be entered when convenient.

*** THE HOLD FILE IS FULL. YOU CAN NOT PROCEED UNTIL YOU UPDATE OR CANCEL ALL. YOU MAY THEN REENTER THIS TRANSACTION.

Cause - The HOLD FILE is full.

Action - The present transaction is not processed. UPDATE ALL or CANCEL ALL must be entered prior to another transaction.

I/O ERRORR ON HOLD FILE.

Cause - I/O error reading key dictionary member from HOLD FILE.

Action - Retry transaction. UPDATE or CANCEL ALL, if unsuccessful.

I/O ERROR WHILE READING HOLD FILE RECORDS.

Cause - I/O error on HOLD FILE.

Action - The transaction is retained on IMQ. Retry or CANCEL.

ERROR CODES

I/O ERROR WHILE READING (FILE) (KEY).

Cause - I/O error on master file.

Action - The transaction is retained. It may be retried. If this error is persistent, the file may have to be reorganized or hardware malfunctions investigated.

DIRECT SUBSET UPDATE TO DELETED RECORD (KEY).

Cause - Self-explanatory.

Action - Transaction is saved on IMQ.

DIRECT SUBSET UPDATE TO NONEXISTENT RECORD (KEY).

Cause - Self-explanatory.

Action - Transaction is saved on IMQ.

I/O ERROR READING (FILE).

Cause - I/O error reading master file control record.

Action - If a retry fails, and no hardware malfunction can be found, the master file should be restored from a backup prior to further updating.

I/O ERROR READING FILE (FILE) (KEY).

Cause - I/O error reading the Master File.

Action - The transaction is retained on the IMQ. It may be retried. If this error is persistent, the file may have to be reorganized or hardware malfunctions investigated.

I/O*ERR**SODA**TRL.

Cause - I/O error reading the HCLD FILE.

ERROR CCDES

Action - Previous updates to this record are lost. Transaction is saved on IMQ. The transaction may be retried or CANCEL this record key and reenter this transaction.

I/O*ERR**SODA**TR2.

Cause - I/C error writing on the HOLD FILE.

Action - The update to this record is lost. UPDATE or CANCEL ALL and retry.

I/O*ERR**SODA HF1 (FILE) (TERMINAL) (KEY).

Cause - I/C error on HOLD FILE.

Action - Unable to read the Key Dictionary member. Entire HOLD FILE is canceled.

I/O*ERRCR**SODA HF2.

I/O*ERRCR**SODA HF3.

I/O*ERRCR**SODA HF4.

Cause and Action same as previous.

I/O*ERROR**SODA HF5 (FILE) (TERMINAL) (KEY).

Cause - I/O error reading second block of Key Dictionary member.

Action - Remainder of HOLD FILE is canceled.

I/O*ERR**SODA**HF6.

Cause - I/O error writing on HOLD FILE.

Action - SODA was in the process of modifying the Key Dictionary block of the HOLD FILE. Some or all of the update may be lost. Try UPDATE or CANCEL commands.

I/O*ERROR**SODA MF1 (FILE) (TERMINAL).

ERROR CODES

Cause - I/C error on EOL1 FILE.

Action - UPDATE ALL was specified. One or more records could not be updated. All possible records were updated.

I/O*ERROR**SODA MFI (FILE) (TERMINAL) (KEY).

Cause - I/O error encountered during the file update.

Action - All records which could be updated, have been.

EBRCR CODES

6.4 EDIT Error and Diagnostic Messages

EDIT error messages consist of three types: EDIT component error messages, CCEDIT error messages, and batch component TP error messages.

6.4.1 EDIT Component Error Messages

The error messages displayed by EDIT are generally self-explanatory, and the necessary corrective action is implied. Additional explanation is provided here following each message.

These messages are written to the Edit Message Queue immediately following the commands they reference.

Each message is identified by a 4-digit number, a 2-digit prefix followed by a 2-digit sequence number; e.g.,

XXYY where:

XX is the prefix digits identifying the EDIT routine where the message is generated

00 = Structure Errors
01-29 = Input/Modification Command
30-59 = Output WCRK Command
60-89 = Output non-WCRK Command

Prefix-00 messages are a special category of errors not pertinent to any one single command. They apply to entry structure problems applicable to all commands.

yy is the sequence digits enumerating the messages per command.

01-49 = indicates the error occurred during the validity check of the command statement

50-99 = indicates the error occurred during the execution of a command function.

The error codes for the commands are as follows:

1
ERROR CODES

THIS PAGE IS BEST QUALITY PRACTICABLE
FROM COPY FURNISHED TO DDC

1611 PACK XXXXXX NOT MOUNTED

EXPLANATION - Self-explanatory. The pack must be mounted for SCRATCH and RENAME functions.

1612 INVALID CONTINUATION LINE

EXPLANATION - The first line ends with a comma, but the next line does not begin with a /U.

1613 CVOL PACK XXXXXX NOT MOUNTED

EXPLANATION - The data set is cataloged through the use of a control volume pointer which is on the designated pack.

#1650 DSN CATALOGED

EXPLANATION - The specified data set name was entered in the system catalog.

1651 CVOL PACK NOT MOUNTED

EXPLANATION - See Error Code 1613.

1652 DSN ALREADY CATALOGED, NO ACTION TAKEN

EXPLANATION - Self-explanatory.

1653 REQUEST NOT SERVICED, CONDITION CODE=XX

EXPLANATION -

For LOCATE function:

- 12 - Either index, alias, or CVOL pointer was found when list of qualified names exhausted.
- 16 - A data set resides at some level of index other than the lowest index level specified.
- 20 - Illegal data set name
- 24 - Permanent I/O error while processing catalog

CH-1

ERRCR CCDES

For CATLG or UNCLTG function:

- 16 - The index structure necessary to catalog the data set does not exist
- 20 - Space is not available on the catalog
- 28 - Permanent I/C error while processing catalog

For the SCRATCH or RENAME function:

- 4 - Permanent I/C error on volume

#1654 DSN UNCATALOGED

EXPLANATION - The specified data set name entry was deleted from the systems catalog.

1655 DSN LOCATED ON MORE THAN FIVE VOLUMES

EXPLANATION - Self-explanatory.

1656 XXXXXX DSN NOT ON PACK

EXPLANATION - The data set cannot be found on the specified pack.

1657 XXXXXX DSN ALREADY EXISTS ON PACK, NO ACTION TAKEN.

EXPLANATION - Self-explanatory.

#1658 XXXXXX DSN RENAMED ON PACK

EXPLANATION - X is the volume serial.

1659 DSN NOT CATALOGED, CANNOT BE LOCATED.

EXPLANATION - Self-explanatory.

1660 RETENTION PERIOD NOT UP; PURGE NOT SPECIFIED.

EXPLANATION - The data set cannot be scratched unless PURGE is specified.

1
ERROR CODES

THIS PAGE IS BEST QUALITY PRACTICABLE
FROM COPY FURNISHED TO DDC

#1661 INVALID OS DATA SET NAME
EXPLANATION - Data set name does not meet OS/VS
name conventions.

1662 DSN NOT ON PACK; NO ACTION TAKEN.
EXPLANATION - Self-explanatory.

#1663 DSN COMPLETELY SCRATCHED.
EXPLANATION - Specified data set was scratched

#1664 DSN RENAMED
EXPLANATION - Specified data set was renamed.

#1665 XXXXXX DSN SCRATCHED FROM THIS PACK.
EXPLANATION - X is the volume serial.

2900 INVALID SIGNOFF CIPHER.

EXPLANATION - DELETE is sole acceptable operand on
SIGNOFF entry.

2902 TEMPORARY DATA SETS EXIST - DELETE OPTION REQUIRED.
EXPLANATION - DELETE must be coded if temporary
data sets exist.

3055 NO MEMBER NAMES WERE FOUND FOR THE COMPONENT.
EXPLANATION - Self-explanatory.

3100 UNRECOGNIZED KEYWORD OPTION IN PUT OPERAND.
EXPLANATION - Option other than MEMBER, LIBRARY
NEW, OLD, FM, PS, RASP, OP, QUIP, MOVE, FESEQ, WORK
or valid tempname encountered in PUT command.

3103 INVALID MEMBER NAME SPECIFICATION.

ERROR CODES

- EXPLANATION - Member name entered does not conform to CS/360 conventions.
- 3104 LIBRARY OPTION OMISSION INVALID WITH NO PREVIOUSLY ESTABLISHED LIBRARY.
- EXPLANATION - LIBRARY parameter omission implies reference to previously defined library and requires same.
- 3106 INVALID LIBRARY NAME SPECIFICATION.
- EXPLANATION - Library name specified does not conform to OS/360 conventions.
- 3107 LIB NAME NOT SAME AS IN GET-UPDATE COMMAND.
- EXPLANATION - The library specified in a PUT OLD command must be the same as that in the previous GET UPDATE command.
- 3108 INVALID ATTEMPT TO REFERENCE SECOND LIBRARY PER EDIT PASS.
- EXPLANATION - EDIT restricts library reference to one library per EDIT pass.
- 3120 RESEQ INVALID OPTION FOR NONSEQUENCED DATA.
- EXPLANATION - When the input, either WORK file or a temporary data set, is nonsequenced, EDIT will not accept the RESEQ option.
- 3121 MEMBER NOT IN UPDATE MODE: OLD OPTION INVALID.
- EXPLANATION - If member has not been classified as update mode by a previous GET command, it cannot be recipient of a PUT.
- 3122 OMISSION OF COMPONENT OPTION INVALID WITH 'NEW' SPECIFICATION.
- EXPLANATION - EDIT requires either a component entry or the word 'NEW' for a new member name.

ERROR CODES

3123 INVALID COMPONENT ENTRY: INCONSISTENT WITH OLD
 COMPONENT SPECIFICATION OF MEMBER.

EXPLANATION - Component specification with the OLD
option must be consistent with the component
already indicated in the library.

3124 INVALID ATTEMPT TO CREATE DUPLICATE MEMBER NAME.

EXPLANATION - Member name option specified as NEW
already exists.

3125 INVALID MEMBER NAME COMMISSION.

EXPLANATION - HLT requires member name
specification on the PUT command.

3126 INVALID TEMPNAME OPTION: TEMPORARY DATA SET
REQUESTED IS VOID OF DATA.

EXPLANATION - Temporary data set requested has not
received actual data either previous to, or during,
this EDIT pass.

3130 DUPLICATE KEYWORD PARAMETERS.

ERROR CODES

Cause - Advisory message. The PARM on the EXEC card contains a quantity which is not recognized by the UTELDISM program.

Action - Reexamine the EXEC card.

#1542 SERIOUS ERROR, CONTACT SYSTEMS
PROGRAMMER.

Cause - Some flag bits which control the output file are invalid.

Action - Contact systems programmer.

7.6 16XX Series - UTQRTQDP Utility Error Codes

ABEND 0001

1600 PHYSICAL EOLAD IN QDP - ERROR ABEND.

Cause - A physical end of data was encountered on the Qualifying Data File. This condition implies a bad answer file.

Action - Corrective action would require rerunning the RASP processor to create a good QDP.

1605 ERROR READING QRT - ERROR ABEND.

Cause - Indicates an I/O failure while reading the Qualifying Record Table.

Action - Corrective action requires rerunning the RASP processor to create a good QRT.

ABEND 0002

1610 INVALID KEYWORD - RUN TERMINATED.

Cause - An unrecognizable key word was found during control card processing.

ERROR CODES

- Action - The user should check the input control card, correct, and resubmit the run.
- 1615 NC ANSWER SET FOR QUERYNO/RITID.
- Cause - The query number or the query number and RITID specified in the control card do not correspond to an answer set on the CRT/QDF provided to the program.
- Action - Recheck the RASP run which produces the answer set, correct the control parameter and resubmit the run with the correct query number and/or RITID.
- 1620 CRT/QDF IS MULTIFILE PRODUCT - ERROR.
- Cause - Run is not permitted.
- Action - Change run to produce single file product.
- 1625 NO FILE RECORD ON CRT - EAD INPUT.
- Cause - This is a series of system problems usually indicated by a bad QDF. The program is saying that it can find a Qualifying Data File data set, but cannot find a critical control record in the set.
- Action - No corrective action can be taken except to rerun the RASP job creating the answer stream and retrying the utility. If error persists, contact system programmer.
- 1630 ONLY ONE CONTROL CARD PERMITTED.
- Cause - All input parameters must be supplied on a single control card.
- Action - Recheck the input stream, eliminate superfluous card, and resubmit run.

ERROR CODES

ABEND 0003

1635

ECD FCUNI CCEYING FFT AND LS - NO DATA.

Cause - The program is stipulating that no data qualified during the RASP run creating the QUERY/RITID answer stream identified in the utility control card.



DEFENSE COMMUNICATIONS AGENCY

COMMAND AND CONTROL
TECHNICAL CENTER
WASHINGTON, D. C. 20301

10 June 1976

IN REPLY
REFER TO:

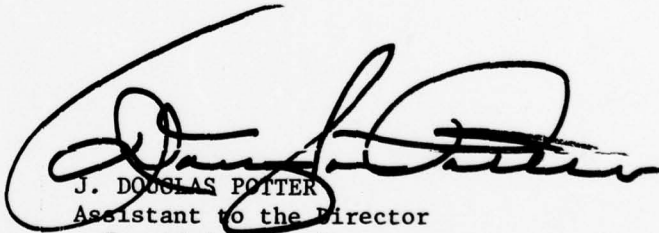
TO: DISTRIBUTION

SUBJECT: Change 2 to CSM UM 15-74, Error Codes,
Volume IX, dated 15 October 1974

1. Insert the enclosed change pages and destroy the replaced pages according to applicable security regulations.
2. A list of Effective Pages to verify the accuracy of this manual is enclosed. This list should be inserted before the title page.
3. When this change has been posted, make an entry in the Record of Changes on the inside cover.

FOR THE DIRECTOR:

50 Enclosures
Change 2 pages


J. DOUGLAS POTTER
Assistant to the Director
for Administration

PRECEDING PAGE BLANK-NOT FILMED



EFFECTIVE PAGES - 10 June 1976

This list is used to verify the accuracy of CSM UM 15-74, Volume IX, after change 2 pages have been inserted. Original pages are indicated by the letter O, change 2 by the numeral 2.

<u>Page No.</u>	<u>Change No.</u>
Title Page	2
iii - iv	2
v	2
vi	O
1 - 60	O
61 - 74	2
74.1 - 74.2	2
75 - 102	O
103 - 104	2
104.1 - 104.2	2
105 - 254	O
255 - 256	2
257 - 274	O
275 - 278	2
278.1 - 278.2	2
279 - 282	O
283 - 288	2
288.1 - 288.2	2
289 - 323	O
323.1 - 323.7	2
324	2
325 - 330	O
331 - 332	2
333 - 373	O

COMMAND AND CONTROL TECHNICAL CENTER
Computer System Manual Number CSM UM 15-74


10 June 1976

NMCS INFORMATION PROCESSING SYSTEM
360 FORMATTED FILE SYSTEM (NIPS 360 FFS)


Users Manual

Volume IX - Error Codes

SUBMITTED BY:


CRAIG K. HILL
Captain USA
CCTC Project Officer

APPROVED BY:


CEDRIC S. WALLACE
Captain, USN
Deputy Director, NMCS ADP

This document has been approved for public release and sale;
its distribution is unlimited.

CH-2

CONTENTS

Section		Page
	ACKNOWLEDGMENT.....	ii
	ABSTRACT.....	vi
1	INTRODUCTION.....	1
2	FILE STRUCTURING ERROR CODES.....	2
2.1	Advisory Messages.....	3
2.2	Error Messages.....	12
2.3	Special Messages.....	34
2.4	Abnormal End Error Messages (USER)..	36
# 2.5	Index Specification Messages.....	39
2.6	File Revision Control Card Edit Messages.....	43
2.7	File Revision Processing Error Messages.....	44
2.8	File Revision Advisory Messages.....	47
3	FILE MAINTENANCE ERROR CODES.....	48
# 3.1	FM Edit and Library Action Errors...	48
# 3.2	FM Proper Error Messages.....	71
3.3	NFL Logic Statement Errors.....	79
3.4	FM User ABEND Codes.....	94
3.5	Index Maintenance Errors.....	112
4	RETRIEVAL AND SORT PROCESSOR ERROR CODES.....	117
4.1	0XX Series Edit Diagnostics -- General.....	118
4.2	1XX Series-Control Division Statements(FILE, EXECUTE, DELETE)...	119
4.3	2XX Series-TITLE Statements.....	131
4.4	3XX Series-LIMIT Statements.....	136
4.5	36XX Series - KEYWORD Statement.....	149
4.6	4XX Series-IF and FURTHER Statements	150
4.7	5XX Series-Library Actions.....	173
4.8	6XX Series-SORT Statements.....	177
4.9	7XX Series-SELECT Statements.....	183
4.10	8XX Series-Retrieval Proper Messages	185
4.10.1	Termination Messages.....	185
4.10.2	Record Qualification Error Messages.....	192
4.10.3	End-of-Job Information Message Errors.....	193
4.11	9XX Series-Keyword Statements and Edit Flag.....	194

Section		Page
4.12	Index Processing Messages.....	199
4.13	RASP User ABEND Codes.....	205
5	OUTPUT PROCESSOR ERROR CODES.....	206
5.1	RIT Specification Error Messages....	207
5.2	Control and Program Error Messages..	227
5.3	OP User ABEND Codes.....	239
5.4	Post-Publish List.....	242
6	TERMINAL PROCESSING COMPONENT.....	243
6.1	TP Monitor/Supervisor.....	243
6.1.1	Normal Progress Messages.....	243
6.1.2	Warnings and Errors.....	244
6.1.2.1	While Paging Through Output.....	244
6.1.2.2	In Response to a -X Program Request.	245
6.1.2.3	In Response to a Line of Input Other Than Paging Commands.....	246
6.1.3	System Operator's Console - TP Monitor/Supervisor Advisory/ Diagnostic Messages.....	247
6.1.4	TP Monitor/Supervisor ABEND Codes...	248
6.1.5	DUMP Error Messages.....	249
6.1.6	BLAST Error Messages.....	251
6.1.7	UTILITY ERROR Messages.....	252
6.2	QUIP Error Messages.....	253
# 6.2.1	QUIP Error Diagnostic Messages.....	253
6.2.2	QUIP Control and Program Messages...	279
6.2.3	QUIP User ABEND Codes.....	285
6.2.4	Secondary Indexing and Keyword Indexing in QUIP.....	286
6.3	SODA Error Messages.....	286
6.4	EDIT Error and Diagnostic Messages.....	288.2
# 6.4.1	EDIT Component Error Messages.....	288.2
6.4.2	COEDIT Error Messages.....	321
6.4.3	Batch Component TP Error Messages...	322
# 6.5	FORMATTER Error and Diagnostic Messages.....	323.1
# 6.5.1	Definition Phase Error Messages.....	323.2
# 6.5.2	Operational Phase Error Messages....	323.5
7	UTILITY COMPONENT ERROR CODES.....	324
7.1	11XX Series-TABGEN Utility Error Codes.....	324
7.2	12XX Series-SUBLDR Utility Error Codes.....	333
7.3	13XX Series-Data Conversion Error Codes.....	335
7.4	14XX Series-UTBLDISM Utility Error Codes.....	337

Section		Page
# 7.5	15XX Series-UTBLDSAM Utility Error Codes.....	340
7.6	16XX Series-UTQRTQDF Utility Error Codes.....	343
7.7	17XX Series-UTSUBCHK Utility Error Codes.....	346
7.8	18XX Series-UTDMPLIB Utility Error Codes.....	347
7.9	19XX Series-UTCLASS Utility Error Codes.....	348
7.10	20XX Series UTFLESCN Error Codes.....	344
7.11	21XX Series File Analysis Statistics Error Codes.....	352
7.12	22XX Series UTSOURC Error Codes.....	354
7.12.1	40XX Series UTSOURC ABEND Codes.....	356
7.13	Index Transfer Utility.....	356
7.14	Index Specifications Utility.....	357
7.15	Dictionary Maintenance Utility.....	358
7.16	Keyword Analysis Utility.....	364
8	SYSTEM UTILITY ERROR CODES.....	367
	DISTRIEUTION.....	368

ERROR CODES

4095). The dump should be given to the system programmer for diagnosis.

20044 THE SMR OPERATOR CAN ONLY BE USED IN RANGE STATEMENTS

Cause - An SMR instruction was detected in a nonrange logic statement.

Action - Correct the logic statement and rerun the job.

#20060 INPUT/CUTPUT ERROR READING A WORK FILE

Cause - This message indicates that an I/O error occurred when reading a work file.

Action - Rerun job. If error persists, see systems programmer.

#20061 INPUT/CUTPUT ERROR READING A WORK FILE SEE ERROR CODE 20060

#20062 INPUT/CUTPUT ERROR READING A WORK FILE. SEE ERROR CODE 20060.

#20063 INPUT/OUTPUT ERROR READING WORK FILE. SEE ERROR CODE 20060.

#20064 INPUT/CUTPUT ERROR READING WORK FILE. SEE ERROR CODE 20060.

#20065 INPUT/OUTPUT ERROR READING WORK FILE. SEE ERROR CODE 20060.

#20066 INPUT/OUTPUT ERROR READING WORK FILE. SEE ERROR CODE 20060.

#20067 INPUT/OUTPUT ERROR READING WORK FILE. SEE ERROR CODE 20060.

21000 THIS STATEMENT CONTAINS A DUPLICATE TDC FIELD NAME.

ERROR CODES

- Cause - All transaction fields which are referred to within a logic statement must have a unique name within the logic statement; this card violates this rule.
- Action - Correct the card and rerun the job.
- 21002 THE DESCRIPTIVE INFORMATION ON THE TDD CARD IS NOT NUMERIC.
- Cause - A numeric field on the TDD card contains non-numeric data.
- Action - Correct the card and rerun job.
- 21004 THIS STATEMENT CONTAINS AN ILLEGAL CPERAND.
- Cause - The operand is illegal for use with the operator or statement.
- Action - Check operator for valid operands. Check that operands are punched beginning in proper card column. Correct the instruction and rerun the job.
- 21006 THE OPERAND TYPE ON THIS STATEMENT IS ILLEGAL FOR THIS OPERATOR.
- Cause - The operand is illegal for use with the operator or statement.
- Action - Check operator for valid operands. Correct the instruction and rerun the job.
- 21008 THIS STATEMENT CONTAINS AN ILLEGAL POOL STATEMENT.
- Cause - The operator is not a valid POOL operator.
- Action - Check POOL instructions for correct operators. Check that operators are punched in proper card columns. Correct and rerun the job.

ERROR CODES

21010 THE FIELD NAME ON THIS STATEMENT WAS NOT FOUND
IN THE FFT.

Cause - Self-explanatory.

Action - Check the FFT for the name of the field. If
name is in FFT, see the system programmer.

21011 FIELD NAME NOT IN FFT.

Cause - The field name was not found in the FFT.

Action - Check the FFT for the name of the field. If
name is in FFT, see the system programmer.

21012 AN ILLEGAL ATTEMPT TO ACCESS A SYSTEM FIELD
WAS SPECIFIED ON THIS STATEMENT.

Cause - An illegal reference to a system generated
field.

Action - Remove the reference to the field and rerun
the job.

21014 SYSTEM ERROR. THE FFT DOES NOT CONTAIN
A VALID CHARACTER DESCRIPTOR.

Cause - Self-explanatory.

Action - See the system programmer.

21016 THE DATA FILE FIELD NAME ON THIS STATEMENT
EXCEEDS SEVEN CHARACTERS.

Cause - The name of the statement does not conform to
system standards for data file field names.
Names must contain from one to seven
characters, with no special characters; the
first character must be alphabetic.

Action - Correct the name to conform to system
standards and rerun the job.

ERROR CODES

- 21018 THE MODE OF THIS OPERAND IS INCOMPATIBLE WITH THIS STATEMENT.
- Cause - The operand is illegal for use with the operator or statement.
- Action - Check operator for valid operands. Correct the instruction and rerun the job.
- 21020 THE TYPE OF FIELD ON THIS STATEMENT IS INVALID.
- Cause - The operand is illegal for use with the operator or statement.
- Action - Check operator for valid operands. Correct the instruction and rerun the job.
- 21022 THE TRANSACTION FIELD NAME ON THIS STATEMENT WAS NOT DEFINED ON TDD CARDS.
- Cause - Self-explanatory.
- Action - Correct the statement if the name was incorrect. Otherwise, define the name.
- 21024 THE TRANSACTION FIELD HAS AN ILLEGAL MODE FOR THIS OPERATOR.
- Cause - The operand is illegal for use with the operator.
- Action - Check operator for valid operands. Correct the instruction and rerun the job.
- 21026 THE VALIDITY CODE SPECIFIED ON THIS STATEMENT IS INVALID.
- Cause - The validity code is not correct.
- Action - Check the instruction for correct validity codes. Correct and rerun the job.

ERROR CODES

- 21028 THIS STATEMENT CONTAINS A NONNUMERIC LITERAL.
- Cause - The literal is invalid with the operator.
- Action - Check the literal, correct, and rerun the job.
- 21030 THE ALPHA LITERAL USED ON THIS STATEMENT IS
 ILLEGAL FOR THIS OPERATOR.
- Cause - The literal is invalid with the operator.
- Action - Check the literal, correct, and rerun the job.
- 21032 AN INVALID DESIGNATION HAS BEEN SPECIFIED ON A
 DIRECTLY-ADDRESSED FIELD.
- Cause - The B field in the instruction is not valid as
 a designation of the A field.
- Action - Check the B field for validity with the
 operator and the A field. Correct and rerun
 the job.
- 21034 AN INVALID LENGTH HAS BEEN SPECIFIED ON A
 DIRECTLY-ADDRESSED FIELD.
- Cause - Length of the field is invalid.
- Action - Check the instruction. Correct the length and
 rerun the job.
- 21036 AN INVALID LENGTH HAS BEEN SPECIFIED ON A
 BINARY WORK AREA.
- Cause - The length of binary work areas must be
 specified in multiples of four. This
 statement violates this rule.
- Action - Change the length of the binary work area to
 a multiple of four and rerun the job.
- 21038 THE LABEL OPERAND ON THIS STATEMENT IS
 UNDEFINED.

ERROR CODES

- Cause - The operand on the statement refers to an instruction symbol which is undefined.
- Action - Include the instruction symbol on the instruction and rerun the job.
- 21040 SYSTEM ERROR WHILE READING THE PFT.
- Cause - Self-explanatory.
- Action - See the system programmer.
- 30001 NO TRANSACTION REPORT NAME WAS SPECIFIED FOR THE RUN. RUN TERMINATED.
- Cause - Self-explanatory.
- Action - Include the name of the first report type on the FMS control card and make certain succeeding transaction report types are preceded by a new report card. Rerun the job.
- 30002 TRANSACTION REPORT - XXXXXXXX - NOT FOUND IN LIBRARY. RUN TERMINATED.
- Cause - Self-explanatory.
- Action - Include an ADD report card to add the report name to the library and rerun the job.
- 30003 REPORT - XXXXXXXX - STATEMENT - XXXXXXXX NOT FOUND IN LIBRARY.
TRANSACTION RECORD FOLLOWS ****
- Cause - The statement name on the transaction record has not been added to the library.
- Action - Check transaction record for error in statement name field. If an error is found, correct it. If record is correct, compile and add logic statement to library and rerun the job. This message is printed only for the first error transaction. Check other transactions for the same error.

ERROR CODES

- 30004 INVALID FIELD NAME - XXXXXXX - IN TRANSACTION
FIELD. REPORT ID - XXXXXXX - STATEMENT ID -
XXXXXX - TRANSACTION RECORD FOLLOWS ****
- Cause - The indirectly-addressed data field in the
transaction record is invalid.
- Action - Correct the transaction record and resubmit
the corrected transaction.
- 30005 ADVISORY MESSAGE - NO LIBRARY UPDATES WILL BE
PERFORMED WHEN COM or LIB MODE IS USED WHEN
PROCESSING SEQUENTIAL FILES***
- Cause - Advisory message to caution user when
executing COM or LIB modes during sequential
file processing.
- Action - Library actions for sequential files must be
made with a GEN (generate) or UPD (update) FM
run.
- 30006 FOLLOWING BLOCKS OF TRANSACTIONS CAUSED I/O
ERRORS. DATA READ INTO CORE WILL BE PRINTED.
- Cause - This is a header message for transaction input
errors. See ABEND code 102.
- Action - See cause above.
- 30007 ERROR READING ISAM TRANSACTIONS OR SAM PFT
RECORDS.
- Cause - See ABEND code 102.
- Action - See ABEND code 102.
- 30008 RUN TERMINATED BY I/O ERROR WHILE READING
TRANSACTION.
- Cause - See ABEND code 102.
- Action - See ABEND code 102.

ERROR CODES

30009 RUN TERMINATED. TRANSACTION I/O ERRORS
 EXCEEDED LIMIT OF 100 OCCURRENCES OR 1000
 LINES PRINTED.

Cause - See ABEND code 102.

Action - See ABEND code 102.

30010 ABNORMAL RETURN FROM LINK-EDIT; ATTEMPT TO
 CONTINUE WILL BE MADE.

Cause - In attempting to perform a library action with
 user logic statement an error return code was
 passed to FM from the OS Link-Edit.

Action - Run will continue, and a specific error
 message will be returned from FM when logic
 statement is encountered during processing.
 The specific FM user ABEND code will pinpoint
 exact error.

30011 INSUFFICIENT SORT WORK SPACE REQUESTED.

Cause - The space allocated in the sort work DD state-
 ment is insufficient.

Action - Increase space and resubmit job.

30012 DDNAME- -ENCOUNTERED IN NEW REPORT RECORD
 ON TAPE/DISK TRANSACTION SOURCE. NEW REPORT
 RECORD IGNORED.

Cause - A NEW REPORT card containing the optional DD
 Name parameter was encountered on a tape or
 disk transaction source.

Action - Record is ignored. NEW REPORT control records
 must be entered through SYSIN when utilizing
 the optional DD Name parameter to designate
 multiple transaction sources.

ERROR CODES

- 30013 DDNAME- -NOT SUPPORTED BY USER-SUPPLIED
JCL STATEMENT. NEW REPORT RECORD IGNORED.
- Cause - A NEW REPORT card was encountered containing the optional specification of a new transaction source ID name which was not supported by user-supplied JCL.
- Action - NEW REPORT card ignored. Run continues. Rerun FM after correctly supplying required JCL DD statement. Input to FM need be only the transaction source which was ignored as a result of the error.
- 30014 DDNAME- -NOT IN FORM - ISTRANxx or
PSTRANxx. NEW REPORT RECORD IGNORED.
- Cause - A NEW REPORT card was encountered containing the optional specification of a new transaction source ID name. However, the DD name supplied did not conform to required format of PSTRANxx for sequential organization or ISTRANxx for indexed sequential organization.
- Action - NEW REPORT card ignored. Run continues. Rerun FM after correcting DD Name to conform to standards. Input to FM need be only the transaction source which was ignored as a result of the error.
- 30016 STATEMENT XXXXXX FOR REPORT XXXXXX IS
INCOMPLETE ON THE DATA FILE.
- Cause - Probable machine malfunctions during run which added the logic statement to the file.
- Action - Delete logic statement and recompile.
- 31000 UPDATE RECORD ID NOT WITHIN SEGMENT BOUNDARY.
UPDATE RECORD ID FOLLOWS ***.
- Cause - Self-explanatory.

ERROR CODES

Action - The update record-transaction is skipped. Check for errors and determine action to be performed.

#31001 LIMIT IGNORED - NO CORE FOR WORK AREA.

Cause - Self-explanatory.

Action - Re-run job with increased region size.

#31002 INVALID PARTIAL FIELD NOTATION.

Cause - Self-explanatory.

Action - Check rules for specifying partial field notation.

#31003 INVALID OPERATOR

Cause - Invalid relational operator specified.

Action - Check list of valid relational operators.

#31004 CANNOT FIND 2 VALUES FOR -BT-.

Cause - Two values were not specified on LIMIT control card.

Action - Specify 2 values on control card; i.e. A/B.

#31005 VALUE LENGTH 0 OR TOO LONG.

Cause - Literal on control card not equal in length to field or group.

Action - Make sure literal and field or group to be compared are equal in length.

#31006 FIELD IS NOT HIGH ORDER POSITION OF MAJOR CONTROL.

Cause - Self-explanatory.

ERROR CODES

Action - Make field, group, or the partial field HOP of major control.

3.2 FM Proper Error Messages

The following error codes are printed without a message during FM Proper. Depending on the error condition, information about the status of the run is printed. The items printed are the transaction record, statement and report names, data record ID, update record ID, subroutine name, and the record that caused an I/O error. The error codes are listed below with a description of the error cause and the appropriate corrective actions to be taken.

50102 PROCESSING ATTEMPTED ON INACTIVE SUBSET.

Cause - Logic statement attempted to perform actions on a subset prior to activation.

Action - Activate the subset through use of the POOL instructions 'POS', 'POV', or BSS, before processing fields in the subset.

50104 PROCESSING BLOCK FULL ON A MOVE TO A VARIABLE SET.

Cause - Self-explanatory.

Action - Check to ensure there is no loop in the logic statement. If there is no loop, see the system programmer.

50105 PROCESSING ATTEMPTED ON INACTIVE SUBSET. INDIRECT ADDRESSING.

Cause - Logic statement attempted to perform actions on a subset prior to activation.

Action - Activate the subset through use of the POOL instructions 'POS', 'POV', or 'BSS' before processing fields in the subset.

50106 MOVE TO VARIABLE FIELD WILL MAKE THE RECORD TCO LCNG.

ERROR CODES

Cause - The variable field has been increased to such a size that the record cannot contain the characters to be added.

Action - If possible, reduce the amount of variable data in the transaction and resubmit the transaction.

50500 MODE ERROR IN INDIRECTLY-ADDRESSED FIELD FOR MOVE INSTRUCTION.

Cause - Indirectly-addressed fields are resolved at execution time and a mode error has been detected.

Action - Check the operation involving the field. Correct and resubmit the transaction.

50501 CONVERSION ERROR IN MOVING DATA TO A COORDINATE FIELD USING INDIRECT ADDRESSING.

Cause - The data in the indirectly-addressed field does not conform to PFS standard internal or external coordinate data format.

Action - Correct logic statement if in error or correct the (transaction) data field content.

50503 DECIMAL NUMBER TO BE CONVERTED TO BINARY IS OUTSIDE THE RANGE $\pm 2,147,483,647$.

Cause - A conversion to binary operation resulted in a fixed-point divide exception because the binary number could not be contained in one register (31 bits plus sign).

Action - Transaction data being moved to numeric (binary) fields and binary work areas must be constrained to the range $\pm 2,147,483,647$. Since all arithmetic operations performed within the logic statement utilize fixed point arithmetic, results of computations must also be within this range of values. Where computations can be deferred to CF(i.e.,

ERROR CODES

performed within the RI), results may be up to 15 decimal digits since decimal arithmetic is used.

- 50505 CONVERSION OF DECIMAL FIELD WITH INCORRECT SIGN BITS.
- Cause - A conversion to binary operation detected a decimal field with incorrect sign bits (probably a blank in the rightmost position of the numeric transaction field).
- Action - Check the transaction record to determine the invalid field. If transaction record is not displayed, see system programmer.
- 50606 PROCESSING BLOCK FULL ON POSITIONING OF SUBSET.
- Cause - Self-explanatory.
- Action - Check to ensure there is no loop in the logic statement. If there is no loop, see the system programmer.
- 50507 DUPLICATE RECORD ID CAUSED BY MCT OR MCW.
- Cause - Self-explanatory.
- Action - The duplicate record has not been added to the file. Correct the transaction and rerun.
- 50700 PROCESSING BLOCK FULL ON BUILD SUBSET.
- Cause - Self-explanatory.
- Action - Check to ensure there is no loop in the logic statement. If there is no loop, see the system programmer.
- 50702 KEYWORD FIELD NNN PROCESSING BLOCK FULL WHERE NNN IS THE FIELD ID - SET NUMBER AND HOP.

ERROR CODES

Cause - Insufficient core in input processing block to build old value word list; value not processed.

Action - See the system programmer; use UTNDXSPC to delete and add the field index for proper index data set maintenance.

50800 MODE ERROR IN INDIRECTLY-ADDRESSED FIELD.

Cause - Indirectly-addressed fields are resolved at execution time and a mode error has been detected.

Action - Check the operation involving the field. Correct and resubmit the transaction.

50900 EXCESSIVE BRANCHES TO A LABEL.

Cause - The label has been branched to by an instruction more than 999 times. Processing of this transaction is halted.

Action - Check to ensure there is no loop in the logic statement. If there is no loop, override the instruction counter on the library action card.

51001 FIXED SET DOES NOT EXIST FOR DIRECT SUBSET UPDATE.

Cause - The fixed set had not been created.

Action - Create the fixed set before attempting direct subset updating on the record.

51005 TOO MANY RANGE TRANSACTIONS; RUN TERMINATED.

Cause - More than 75 range transactions were processed.

Action - Break the run into two or more FM runs.

ERROR CODES

51006 DUPLICATE SUBSET GENERATED BY MCS.

Cause - The user attempted to change the control field of an existing subset such that it would become a duplicate.

Action - The existing subset control field is left unchanged. Any other fields in that subset which were changed will remain changed. The subset whose control fields matched the duplicate is unchanged. Correct the transaction and resubmit the job.

51008 DUPLICATE SUBSET GENERATED BY MCS

Cause - The user attempted to change the control field of a new subset such that it would become a duplicate.

Action - The new subset is deleted. The subset whose control field matched the duplicate is unchanged. Correct the transaction and resubmit the job.

51501 KEYWORD FIELD NNN MEMBER NOT IN LITERAFY - X WHERE NNN IS THE FIELD ID AND X IS A MEMBER ID:

- 1 - Scan Subroutine
- 2 - Stop Word Table
- 3 - Dictionary

Cause - Self-explanatory.

Action - See the system programmer; use UTNDXSPC to delete and add the field index for proper index data maintenance.

51503 KEYWORD FIELD NNN MEMBER LOAD FAILURE - X WHERE NNN IS THE FIELD ID AND X IS A MEMBER ID:

- 1 - Scan Subroutine
- 2 - Stop Word Table

ERROR CODES

3 - Dictionary

- Cause - Self-explanatory.
- Action - See the system programmer; use UTNDXSEC to delete and add the field index for proper index data set maintenance.
- 51505 INSUFFICIENT CORE FOR SUBROUTINE.
- Cause - Self-explanatory.
- Action - See the system programmer.
- #51506 ATTEMPT TO CONVERT INVALID CCORD DATA.
- Cause - Invalid coordinate data was supplied to a compare instruction.
- Action - Make sure data, mode of data, and address of data is correct. If error persists, see systems programmer.
- 51507 SUBROUTINE NOT FOUND IN LIBRARY.
- Cause - Self-explanatory.
- Action - Add subroutine to library and resubmit the affected transactions.
- 51509 INVALID SUBROUTINE OUTPUT FOR 'TBL' 'VAL', AND 'GEN' INSTRUCTIONS. LOG WAS SPECIFIED.
- Cause - Self-explanatory.
- Action - Since the instruction specified the logging action, no action is needed.

ERROR CODES

- Action - Take action described for specified error message.
- 172 ISAM DATA FILE I/O ERROR DURING FILE UPDATE.
- Cause - The error described by the last error message printed by the file processor resulted in the ABEND.
- Action - Take action described for specified error message.
- 204 ERROR READING DATA FILE DURING FILE UPDATE.
- Cause - During a file update, a permanent read error was encountered by the system while processing Range statements.
- Action - Restore file from a backup copy and rerun the job.
- 231 ERROR READING DATA FILE.
- See ABEND code 172 for cause and action.
- 400 I/O ERROR READING DATAFILE.
- Cause - A permanent I/O error was encountered by the system while attempting to READ DATAFILE.
- Action - Rerun the job. If error persists, see the system programmer.
- 707 ERROR COMPILATION ILLEGAL FOR EXECUTE ONLY PROCEDURE. RUN TERMINATED WITH ABEND 707.
- Cause - User attempted to compile a logic statement using the procedure FMEX.

ERROR CODES

Action - Use the procedure, FM, or remove the logic statement from the run deck.

#1000 INPUT/OUTPUT ERROR READING A WORK FILE

Cause - An I/O error was encountered by the system when it attempted to read the file containing GEN or EDIT macro instructions.

Action - Rerun job. If error persists, see systems programmer.

4094 ERROR OCCURRED WHILE PROCESSING AN NPL LOGIC STATEMENT.

Cause - The message (and code) preceding the ABEND described the cause of the error. Possible messages and recommended actions are as follows:

Message- *** NPL PASS 1 ***
*** UNABLE TO CONTINUE MESSAGE CCDE
(See Below)
*** DIAGNOSTIC MESSAGE

(A) FMFLUC DATA SET NOT OPENED.

Cause - Self-explanatory.

Action - Check the JCL and resubmit the job.

(B) SCRTWK01 DATA SET NOT OPENED.

Cause - Self-explanatory.

Action - Check the JCL and resubmit the job.

(C) SORTWK03 DATA SET NOT OPENED.

Cause - Self-explanatory.

Action - Check the JCL and resubmit the job.

ERROR CODES

- (D) FMFLUD I/O READ ERROR.
Cause - Self-explanatory.
Action - Resubmit the job.
- (E) SORTWK01 I/O WRITE ERROR.
Cause - Self-explanatory.

ERROR CODES

- 1 = SYSUT1
- 2 = SYSUT2
- 3 = SYSUT3

The character position is used to indicate the error.

Blank = Missing ID card, supply required DD card.

4 = Duplicate DSNNAME, rerun job.

8 = No space on disk, clean VTOC, or supply different disk.

12 = Permanent I/O error, contact local IBM representative.

20 = Requested quantity not available, clean VTCC, or supply different disk.

- 002 SYSTEM ERROR - INVALID SYNTAX IN SYSTEM INTERMEDIATE WORK QUEUE.
- 003 INVALID NUMERIC LITERAL - THE NUMERIC LITERAL IS LONGER THAN THE FIELD WIDTH. THIS MAY ALSO BE CAUSED BY AN EXCESSIVE NUMBER OF LEADING ZEROS.
- 004 UNBALANCED DELIMITERS - THE END OF THE INPUT STATEMENT WAS ENCOUNTERED BEFORE THE ENDING DELIMITER, ASSUMED AT END OF STATEMENT.
- 005 INVALID SYNTAX - SKIPPING TO NEXT OPERATOR, OPERATOR INITIATOR, OR STATEMENT TERMINATOR.
- 006 MULTIPLE DEFINITION - ONLY ONE USE OF THIS OPERATOR IS PERMITTED.
- 007 INVALID LITERAL - THE CLASSIFICATION LITERAL IS A RESERVED WORD OR CONTAINS A

ERROR CODES

SPECIAL CHARACTER AND MUST BE ENCLOSED IN APOSTROPHES.

- 008 INVALID CLASSIFICATION - THE
CLASSIFICATION LITERAL EXCEEDS THE
MAXIMUM ALLOWED LENGTH.
- 009 INVALID FILE NAME - THE FILE NAME IS A
RESERVED WORD OR CONTAINS A SPECIAL
CHARACTER AND MUST BE ENCLOSED IN
APOSTROPHES.
- 010 INVALID FILE NAME - THE FILE NAME EXCEEDS
THE MAXIMUM ALLOWED LENGTH.
- 011 INVALID QUERY NUMBER - THE QUERY NUMBER
MUST BE A NUMERIC LITERAL OF FOUR DIGITS
OR LESS.
- 012 INVALID RIT NAME - THE RIT NAME IS A
RESERVED WORD OR CONTAINS A SPECIAL
CHARACTER AND MUST BE ENCLOSED IN
APOSTROPHES.
- 013 INVALID RIT NAME - THE RIT NAME EXCEEDS
THE MAXIMUM ALLOWED LENGTH.
- 014 WARNING THE NUMBER OF LINES TO BE
SPACED IS LARGER THAN THE NUMBER OF LINES
PER PAGE (DEFAULT=1).
- 016 CLASSIFICATION ERROR - THE CLASSIFICATION
DOES NOT MATCH THE CLASSIFICATION OF THE
FILE.
- 017 NCISE WORD - IGNORED.
- 018 INVALID SYNTAX - INPUT WORD OR LITERAL
EXCEEDS THE MAXIMUM ALLOWED LENGTH -
TRUNCATED TO MAXIMUM LENGTH (2250).

ERROR CODES

- 209 INVALID FIELD NAME - KEYWORD FIELDNAMES
 MUST BE DEFINED AS KEYWORD INDEXED
 FIELDS.
- 210 SYNTAX ERROR - UNBALANCED PARENTHESIS.
- 211 SYNTAX ERROR - INVALID OPERATOR, INCLUDES
 IS ONLY LEGAL OPERATOR FOR KEYWORD
 STATEMENT.
- 212 SYNTAX ERROR - DATA VALUE OF KEYWORD
 STATEMENT NOT SELF-DEFINING TERM OR
 LITERAL.
- 213 ILLEGAL KEYWORD STATEMENT. EITHER MORE
 THAN ONE KEYWORD STATEMENT IS PRESENT OR
 IT IS AFTER THE IF STATEMENT.
- 214 INVALID OPERATOR - FIELD NAME
 COMBINATION. CONTAINS NOT ALLOWED ON
 NUMERIC FIELDS.
- 215 INVALID SYNTAX - USER DEFINED SUM LENGTH
 INVALID.
- 216 INVALID FILE ACCESS - USER DOES NOT HAVE
 EXECUTIVE AUTHORITY TO ACCESS FILE. QUIP
 TERMINATED.
- 217 OPT MSG GENERATED BY VALIDATION ROUTINE.
 MSG SAVED IN TCT AB4/AFA BY IPT200.
- 218 INVALID NAME - THE NAME FOR THE SUBFILE
 IS NOT A VALID NIPS NAME.
- 219 ALLOCATION ERROR - ALLOCATION OF THE
 SUBFILE DATA SET WAS NOT SUCCESSFUL.
- 220 THE SECONDARY INDEXING FEATURE OF
 RETRIEVAL WILL BE BYPASSED. THE REASON
 CODE IS PRINTED IN THE STATEMENT NUMBER
 COLUMN.

ERROR CODES

Note: Codes are:

- 1 - There are no Index Field Descriptor Records in the file even though the file B-recrd indicates the file is indexed. This is a system error.
- 2 - There is no core available for the Secondary Indexing work area. Increase the region size.

- | | |
|-----|--|
| 221 | DATA SET NOT FOUND - THE REQUESTED SUBFILE COULD NOT BE LOCATED. |
| 222 | DUPLICATE SUBFILE NAME - THE NAME SPECIFIED FOR THE SUBFILE HAS ALREADY BEEN ASSIGNED. |
| 223 | INVALID USE OF OPERATOR - ONLY ONE SUBFILE OPERATOR IS ALLOWED IN A QUERY. |
| 224 | INVALID REQUEST - 'SUBFILE' DD STATEMENT NOT FOUND. |
| 225 | INVALID USE OF OPERATOR - THE SUBFILE OPERATOR WAS USED WITHOUT A RETRIEVAL TYPE OPERATOR IN THE QUERY. |
| 227 | BAD CALL TO INSTALLATION VALIDATION SUBROUTINE. |
| 228 | INVALID COORDINATE OVERLAP - POINT TO POINT, LINE TO POINT, AND POINT TO LINE COMPARISONS ILLEGAL WITH OVP OPERATOR. |
| 229 | SYSTEM LIMITS EXCEEDED - THE MAXIMUM NUMBER OF FUNCTION ARGUMENTS HAS BEEN EXCEEDED. |
| 230 | INVALID REQUEST - THE FUNCTION ARGUMENT MAY NOT BE FROM THE 'SORTKEY' OR THE RESULT OF A 'COMPUTE' OPERATOR. |

ERROR CODES

- 231 SYNTAX ERROR - INVALID FUNCTION PARAMETER LIST ENTRY.
- 232 SYNTAX ERROR - A MAJOR SYNTAX ERROR OCCURRED IN THE FUNCTION PARAMETER STRING.
- 233 FUNCTION NOT LOCATED - THE REQUESTED FUNCTION CAN NOT BE LOCATED.
- 234 INVALID USE OF COORDINATE LITERAL - THE FIELD AGAINST WHICH THE LITERAL IS TO BE COMPARED MUST BE EITHER A LATITUDE OR A LONGITUDE.
- 235 WARNING - OBJECT IS LONGER THAN BINARY FIELD AGAINST WHICH IT IS TO BE COMPARED. CONVERSION OF OBJECT TO INTERNAL FORMAT HAS PERMITTED RETRIEVAL TO PROCEED NORMALLY.
- 236 WARNING - LEADING ZEROS OR ALGEBRAIC SIGN CAUSED INPUT LITERAL TO EXCEED LENGTH OF FIELD AGAINST WHICH IT IS TO BE COMPARED. ZEROS HAVE BEEN TRUNCATED OR THE SIGN HAS BEEN INCORPORATED.
- 237 CONVERSION SUBROUTINE ERROR - ERROR OCCURRED DURING EXECUTION OF SPECIFIED INPUT SUBROUTINE.
- 238 CONVERSION SUBROUTINE ERROR - ERROR OCCURRED DURING EXECUTION OF SPECIFIED INPUT SUBROUTINE.
- 239 CONVERSION SUBROUTINE ERROR - ARGUMENT OF INPUT SUBROUTINE EXCEEDS MAXIMUM SIZE EXPECTED BY THAT ROUTINE.
- 240 CONVERSION SUBROUTINE ERROR - MODE OF FUNCTION FROM INPUT SUBROUTINE CONFLICTS WITH THAT OF SUBJECT FIELD.

ERROR CODES

- 241 CONVERSION SUBROUTINE ERROR - QUIP DOES NOT PRESENTLY SUPPORT INPUT SUBROUTINES WHOSE ARGUMENTS ARE BINARY OR COORDINATE.
- 242 CONVERSION SUBROUTINE ERROR - THE FUNCTION FROM THE SPECIFIED INPUT SUBROUTINE EXCEEDS SIZE OF FIELD (AFTER APPLYING PARTIAL FIELD NOTATION IF SPECIFIED).
- 243 INVALID COORDINATE LITERAL - COORDINATE LITERAL IS OF IMPROPER FORM.
- 244 INVALID USE OF GEOGRAPHIC OPERATOR - GEOGRAPHIC OPERATORS REQUIRE SUBJECTS IN COORDINATE MODE.
- 245 INVALID LITERAL - THE LITERAL USING THE UNIVERSAL MATCH CAPABILITY IS LONGER THAN THE FIELD AGAINST WHICH IT IS TO BE COMPARED (AFTER APPLICATION OF PARTIAL FIELD NOTATION IF SPECIFIED).
- #246 INVALID USE OF UNIVERSAL MATCH CAPABILITY. THE UNIVERSAL MATCH CAPABILITY MAY NOT BE APPLIED WITH LITERALS REQUIRING INPUT SUBROUTINES.
- 247 INVALID USE OF UNIVERSAL MATCH CAPABILITY - THE \$ MAY NOT BE USED AS A UNIVERSAL MATCH CHARACTER AGAINST BINARY OR COORDINATE FIELDS.
- 248 INVALID LITERAL - LITERALS CONTAINING SPECIAL CHARACTERS MUST BE ENCLOSED IN SINGLE QUOTES.
- 249 INVALID COORDINATE LITERAL - COORDINATE LITERAL CONTAINS INVALID CHARACTER.
- 250 INVALID NUMERIC LITERAL - NUMERIC LITERAL CONTAINS INVALID NONDIGIT CHARACTER.

ERROR CODES

- 251 INVALID USE OF COORDINATE LITERAL -
COORDINATE LITERALS ARE REQUIRED TO BE
EITHER A LATITUDE OR A LONGITUDE WHEN NOT
APPEARING AS THE OBJECT OF A GEOGRAPHIC
OPERATOR.
- 252 INVALID NUMERIC LITERAL - BINARY AND
DECIMAL LITERALS MAY NOT BE ENCLOSED IN
QUOTES.
- 253 IF STATEMENT ERROR - ONLY TWO SETS MAY BE
REFERENCED IN A SINGLE CLAUSE. IF TWO
ARE REFERENCED ONE MUST BE THE FIXED SET.
- 254 IF STATEMENT ERROR - SUBJECT AND OBJECT
MODES ARE NOT COMPATIBLE. ALPHA DECIMAL
AND COORDINATE SUBJECTS REQUIRE ALPHA,
DECIMAL AND COORDINATE OBJECTS,
RESPECTIVELY. BINARY SUBJECTS REQUIRE
BINARY OR DECIMAL OBJECTS.
- 255 FEATURE NOT YET AVAILABLE - THIS FEATURE
HAS NOT YET BEEN MADE AVAILABLE IN QUIP.
- 256 INVALID SUBFILE RESTART - SUBFILE ALREADY
ACTIVE. SIGNOFF REQUIRED FIRST.
- 257 SUBFILE RESTART FAILURE - CANNOT LOCATE
REQUESTED DATA SET.
- 258 INVALID SUBFILE RESTART - SIGNON MUST BE
FIRST AND ONLY STATEMENT.
- #259 SUBFILE TRACE - TRACE MUST BE THE ONLY
QUERY STATEMENT.
- #260 SUBFILE TRACE - UNIDENTIFIABLE STATEMENT
OPERAND.
- #261 SUBFILE TRACE - SUBFILE FUNCTION IS
INACTIVE.
- #262 SUBFILE TRACE - UNABLE TO LOCATE THE
SUBFILE DATA SET.

ERROR CODES

#263	SUBFILE TRACE - SUBFILE DATA SET OPEN FAILURE.
#264	SUBFILE - UNEXPECTED PDS DIRECTORY ERROR - FIND MACRO FAILURE.
#266	INVALID REFERENCE - THE SORT OPERATOR REFERENCED A FIELD FROM A PERICLCIC SET WHICH WAS NOT RETRIEVED WITH A RETRIEVAL STATEMENT.

ERROR CODES

- Cause - Self explanatory. (MSG. generated by QIPERR)
Action - See System Maintenance Programmer.
- 1051 UNABLE TO OPEN filename.
Cause - Self-explanatory. (MSG. generated by QIPERR)
Action - Correct the problem and rerun.
- 1052 UNABLE TO MOUNT filename.
Cause - Self-explanatory (MSG. generated by QIPERR.)
Action - Correct the problem and rerun.
- 1053 QUIP TERMINATED BY USER ABEND CODE nnnn.
Action - See Section 6.2.3, QUIP User ABEND Codes, for explanation.
- #1054 LACK OF CORE FOR EXPANSION OF COMPRESSION
 COMPACTION DATA RECORDS.
Cause - The problem occurred in the NIPS system
 subroutine IPBLDPB where an attempt was made
 to obtain core for the expansion of a C/C
 record.
Action - Increase the region size and rerun the job.
- #1055 COMPRESSION COMPACTION RECORD CANNOT BE
 EXPANDED. RECORD=XXXXXXXXXXXXXX.
Cause - The UTEXPAND utility was unable to expand the
 data record identified following 'FECCRE=' in
 the message.
Action - Probable program logic error. Consult NIPS
 System Maintenance group.
- 1056 QUERYLIB DD STMT NO LONGER USED TO STORY
 QUERY. NO LIBRARY ACTION TAKEN.

ERROR CODES

- Cause - The user attempted to store a query by using the defunct QUERYLIB DD statement.
- Action - See Section 10, Utility Support, Volume VII of the NIPS Users Manual for the procedure for storing the query.
- 1057 SUBFILE PDS SPACE EXCEED - D37.
- Cause - A subfile PDS WRITE resulted in a system D37 ABEND.
- Action - SIGNOFF to scratch the existing PDS, then SIGNON with SUBFILE to allocate a new PDS. If this error occurs frequently, see the system programmer to allocate more space for the PDS.
- 1058 NC DIRECTORY SPACE AVAILABLE FOR SUBFILE PDS. SUBFILE NCT CREATED.
- Cause - The directory of the subfile partitioned data set has been filled. No entry could be made for the requested subfile.
- Action - No new subfile can be added to the subfile partitioned data set. See systems programmer concerning the allocation of more directory space for future subfile processing.
- 1059 I/O ERROR UPDATING DIRECTORY OF SUBFILE PDS. SUBFILE NCT CREATED.
- Cause - An attempt to update the directory of the subfile partitioned data set resulted in an I/O error.
- Action - Rerun the query. If the problem persists, contact system maintenance for further analysis.
- 1060 CATALOG OF PDS NOT SUCCESSFUL. SIGNON RECOVERY WILL NOT BE POSSIBLE.

ERROR CODES

Cause - An attempt to catalog the subfile partitioned data set just allocated failed.

Action - Subfile creation and processing can proceed, but in the event a restart of the TP control program is required the subfile PDS previously created will not be available.

1061 DUPLICATE SUBFILE NAME. SUBFILE NOT CREATED.

Cause - The name assigned to the subfile to be created by the current query has already been assigned to a subfile that is a member of this PDS.

Action - Change the name of the subfile and execute the query again.

6.2.3 QUIP User ABEND Codes

QUIP may generate the following user ABEND codes:

001- A system ABEND 0C1 through 0CF has been intercepted by QUIP Executive SPIE.

002- A system ABEND 0C1 through 0CF has been intercepted by Translator Executive SPIE.

003- QUIP system error.

Occurrence of these ABENDs will require assistance of System Maintenance Programmer for correction.

When a user has entered an invalid file classification at a terminal, the CLASSIFICATION ERROR message will be displayed and the run will be terminated. When operating in the batch partition, the following message will be displayed on the computer operator's console:

*** WARNING *** JOB jobname STEP stepname (proc.stepname)
THE OUTPUT FROM THIS JOB MAY BE INCORRECTLY CLASSIFIED.

ERROR CODES

The CLASSIFICATION ERROR message will be printed on the output and the report will be printed with the user's classification.

6.2.4 Secondary Indexing and Keyword Indexing in QUIP

In addition to the errors described in the previous sections, error conditions interpreted by Index Processing may occur. Messages describing these are found in Section 4.12, Index Processing Messages. QUIP uses the same Index Processing and Keyword Processing programs as RASP.

6.3 SODA Error Messages

* THE HOLD FILE IS NEARING CAPACITY. YOU SHOULD UPDATE OR CANCEL ALL SCCN.

Cause - Updated records have filled more than 80% of HOLD FILE.

Action - Transactions may still be entered - UPDATE ALL or CANCEL ALL should be entered when convenient.

*** THE HOLD FILE IS FULL. YOU CAN NOT PROCEED UNTIL YOU UPDATE OR CANCEL ALL. YOU MAY THEN REENTER THIS TRANSACTION.

Cause - The HOLD FILE is full.

Action - The present transaction is not processed. UPDATE ALL or CANCEL ALL must be entered prior to another transaction.

I/O ERROR ON HOLD FILE.

Cause - I/O error reading key dictionary member from HOLD FILE.

Action - Retry transaction. UPDATE or CANCEL ALL, if unsuccessful.

I/O ERROR WHILE READING HOLD FILE RECORDS.

ERROR CODES

Cause - I/O error on HOLD FILE.

Action - The transaction is retained on IMQ. Retry or CANCEL.

I/O ERROR WHILE READING (FILE) (KEY).

Cause - I/O error on master file.

Action - The transaction is retained. It may be retried. If this error is persistent, the file may have to be reorganized or hardware malfunctions investigated.

DIRECT SUBSET UPDATE TO DELETED RECORD (KEY).

Cause - Self-explanatory.

Action - Transaction is saved on IMQ.

DIRECT SUBSET UPDATE TO NONEXISTENT RECORD (KEY).

Cause - Self-explanatory.

Action - Transaction is saved on IMQ.

I/O ERROR READING (FILE).

Cause - I/O error reading master file control record.

Action - If a retry fails, and no hardware malfunction can be found, the master file should be restored from a backup prior to further updating.

I/O ERROR READING FILE (FILE) (KEY).

Cause - I/O error reading the Master File.

Action - The transaction is retained on the IMQ. It may be retried. If this error is persistent, the file may have to be

ERROR CODES

reorganized or hardware malfunctions investigated.

I/O*ERR**SODA**TR1.

Cause - I/O error reading the HOLD FILE.

Action - Previous updates to this record are lost. Transaction is saved on IMQ. The transaction may be retried or CANCEL this record key and reenter this transaction.

I/O*ERR**SODA**TR2.

Cause - I/O error writing on the HOLD FILE.

Action - The update to this record is lost. UPDATE or CANCEL ALL and retry.

I/O*ERR**SODA HF1 (FILE) (TERMINAL) (KEY).

Cause - I/O error on HOLD FILE.

Action - Unable to read the Key Dictionary member. Entire HOLD FILE is canceled.

I/O*ERROR**SODA HF2.

I/O*ERROR**SODA HF3.

I/O*ERROR**SODA HF4.

Cause and Action same as previous.

I/O*ERROR**SODA HF5 (FILE) (TERMINAL) (KEY).

Cause - I/O error reading second block of Key Dictionary member.

Action - Remainder of HOLD FILE is canceled.

I/O*ERR**SODA**HF6.

Cause - I/O error writing on HOLD FILE.

ERROR CODES

Action - SODA was in the process of modifying the Key Dictionary block of the HOLD FILE. Some or all of the update may be lost. Try UPDATE or CANCEL commands.

I/O*ERROR**SODA MFX (FILE) (TERMINAL).

Cause - I/O error on HOLD FILE.

Action - UPDATE ALL was specified. One or more records could not be updated. All possible records were updated.

I/O*ERROR**SODA MFL (FILE) (TERMINAL) (KEY).

Cause - I/O error encountered during the file update.

Action - All records which could be updated, have been.

ERROR CODES

6.4 EDIT Error and Diagnostic Messages

EDIT error messages consist of three types: EDIT component error messages, COEDIT error messages, and batch component TP error messages.

6.4.1 EDIT Component Error Messages

The error messages displayed by EDIT are generally self-explanatory, and the necessary corrective action is implied. Additional explanation is provided here following each message.

These messages are written on the Edit Message Queue immediately following the commands they reference.

Each message is identified by a 4-digit number, a 2-digit prefix followed by a 2-digit sequence number; e.g.,

XXYY where:

XX is the prefix digits identifying the EDIT routine where the message is generated

00 = Structure Errors
01-29 = Input/Modification Command
30-59 = Output WORK Command
60-89 = Output non-WORK Command

Prefix-00 messages are a special category of errors not pertinent to any one single command. They apply to entry structure problems applicable to all commands.

yy is the sequence digits enumerating the messages per command.

01-49 = indicates the error occurred during the validity check of the command statement

50-99 = indicates the error occurred during the execution of a command function.

The error codes for the commands are as follows:

ERROR CODES

#6.5 FORMATTER Error and Diagnostic Messages

FORMATTER error messages consist of two types, the Definition Phase error messages and the operational phase error messages. Each error message is identified by a five digit number, starting with the digits 80.

#6.5.1 Definition Phase Error Messages

The following error messages result from errors found during the FORMATTER Definition Phase. FORMATTER will examine the entire format definition for errors and write the appropriate error messages on the OMQ or printer. If FORMATTER discovers any errors, the format definition will not be added to the user library.

For most of the errors, the corrective action is implied by the message itself.

80202 DISPLAY STATEMENT MISSING. SKIPPING TC NEXT
 DISPLAY STATEMENT.

EXPLANATION - A DISPLAY statement must be the first statement in a format definition.

80203 REQUIRED FIELD STATEMENT IS MISSING.

EXPLANATION - There must be at least one FIELD statement after a DISPLAY statement for the format definition.

80204 UNEXPECTED END OF STATEMENT. KEYWORD MISSING.

EXPLANATION - The last keyword in the statement was not followed by an operand value.

80207 XXXXXXXX ALREADY EXISTS IN LIBRARY.

EXPLANATION - A format with the specified name is already in the user library.

80210 INVALID KEYWORD.

ERROR CODES

- EXPLANATION - An invalid parameter keyword was found in the statement.
- 80211 INVALID OPERAND CONSTRUCTION.
- EXPLANATION - The operand value for the specified parameter keyword is not one of the allowable options.
- 80212 PCRMAT NAME IS A RESERVED WORD.
- EXPLANATION - SIGNOFF or UPDATE was specified as the format name.
- 80213 INVALID DEVICE TYPE.
- EXPLANATION - The value specified for the DEVTYP parameter is invalid.
- 80215 INVALID IMQ/CRT LOCATION.
- EXPLANATION - The operand value specified for the IMQLOC or CRTLOC parameter is invalid.
- 80216 INVALID IMQ/CRT LENGTH.
- EXPLANATION - The operand value specified for the IMQLEN or CRTLEN parameter is invalid.
- 80220 INVALID REPEAT OPTION.
- EXPLANATION - The REPEAT option is valid only when EXECUTE is coded for the NEXT parameter.
- 80221 NEITHER CRTLOC NOR IMQLOC CODED. AT LEAST ONE IS REQUIRED.
- EXPLANATION - A FIELD statement must define a CRT or IMQ field.
- 80222 CRT/IMQ FIELD LENGTH WAS NOT CODED.

ERROR CODES

EXPLANATION - A CRT or IMQ field was defined. The field length must be coded since a VALUE parameter was not.

80223 VALUE LITERAL LENGTH GREATER THAN CODED FIELD LENGTH.

EXPLANATION - The length of the literal coded for the VALUE parameter is greater than the value coded for the CRTLEN or IMQLEN parameter.

80224 INVALID CRT PARAMETER. CRTLOC NOT CODED.

EXPLANATION - A CRT field parameter has been coded, but CRTLOC must be coded when defining a CRT field.

80225 MULTIPLE CRT DEFINITIONS ARE INVALID WHEN THE TYPE KEYWORD SPECIFIES UNPROTECTED.

EXPLANATION - Multiple CRT definitions are pertinent only when the TYPE is PROTECTED.

80226 INVALID IMQ PARAMETER. IMQLOC NOT CODED.

EXPLANATION - An IMQ field parameter has been coded, but IMQLOC must be coded when defining an IMQ field.

80230 NO STORAGE AVAILABLE FOR DEFINITION PHASE TRANSLATOR.

EXPLANATION - Self-explanatory. To alleviate this problem in the batch mode, increase the region size. In the on-line mode, try again. Increase the region size if the error persists.

80231 DUPLICATE LOCATION IN STATEMENTS ii AND jj.

EXPLANATION - A CRT or IMQ field location is defined in both statements.

ERROR CODES

80232 CRT FIELD LOCATION OUTSIDE CRT SCREEN RANGE.

EXPLANATION - The location of the CRT field extends beyond column 80 or row 24. Note that the CRT column or row location values may not be 00.

80302 STATEMENT ii CRT LENGTH TRUNCATED. OVERLAPS STATEMENT jj.

EXPLANATION - The CRT field defined in statement ii is truncated because it overlaps the CRT field defined in statement jj. This is a warning message, processing of the format definition continues. Note that the field truncation may create undesired results.

80303 NO STORAGE AVAILABLE FOR DEFINITION OUTPUT.

EXPLANATION - Insufficient main storage is available for the definition output processing. Increase region size if error persists.

80304 LIBRARY DIRECTORY ERROR STOWING FORMAT XXXXXXXXXX.

EXPLANATION - An error occurred while attempting to add an entry in the library directory. Retry.

80305 I/O ERROR WRITING FORMAT XXXXXXXXXX.

EXPLANATION - Self-explanatory. Try again.

80306 LIBRARY DIRECTORY IS FULL. FORMAT XXXXXXXXXX WAS NOT STOWED.

EXPLANATION - The directory of the user library is full. Increase directory space.

80307 XXXXXXXXXX HAS BEEN STOWED IN THE FORMAT LIBRARY.

ERROR CODES

EXPLANATION - Advisory message. No action is needed .

#6.5.2 Operational Phase Error Messages

The following error messages result from errors during the Operational Phase of FORMATTER. After the error message is displayed, processing will cease and FORMATTER will enter the WAIT state.

80002	NC DD CARD FOR USER LIBRARY.
	EXPLANATION - Add an SLIB Data Definition card to the JCL deck, as specified in the Job Preparation manual.
80003	USER LIBRARY DSNAME NOT SPECIFIED.
	EXPLANATION - Specify the library data set name and retry.
80004	CANNCT LOCATE XXXXXXXXX USER LIBRARY VOLUME.
	EXPLANTION - Catalog library name
80005	XXXXXXXXX USER LIBRARY IS NOT MOUNTED.
	EXPLANATION - Self-explanatory. Ask operator to mount volume.
80006	XXXXXXXXX USER LIBRARY IS NOT ON THE SPECIFIED VOLUME.
	EXPLANATION - Self-explanatory. Verify catalog status.
80007	XXXXXXXXX USER LIBRARY OPEN FAILURE.
	EXPLANATION - The user library could not be opened.
80008	XXXXXXXXX USER LIBRARY ENQ FAILURE.

ERROR CODES

EXPLANATION - The user library is not available for use, another user is writing on the library. Wait and try again.

80009 XXXXXXXX LIERARY ACCESS IS NOT PERMITTED.

EXPLANATION - The user does not have authority to access this library. Access authority can only be given to the user through the installation controlled access validation subroutine.

80010 XXXXXXXX USER LIBRARY RECORD FORMAT IS NOT UNDEFINED.

EXPLANATION - The user library must be a data set with undefined record format.

80101 NO STORAGE AVAILABLE FOR (FORMAT, SUB/TAB, HOLD, RESPONSE or DEFINTR) WORK AREA.

EXPLANATION - Self-explanatory. Try again. Increase region size if error persists.

80102 FORMATTER COMMAND IS INVALID.

EXPLANATION - The only permissable FORMATTER commands are SIGNOFF, UPDATE or a format name.

80103 XXXXXXXX FORMAT ACCESS IS NOT PERMITTED.

EXPLANATION - The user does not have authority to access this format. Access authority can only be given to the user through the installation controlled access subroutine.

80104 XXXXXXXX SUE/TAB LOAD I/O ERROR.

EXPLANATION - I/O error occurred while loading the EDIT subroutine or table. Retry.

80105 XXXXXXXX SUE/TAB IS NOT IN THE LIBRARY.

EXPLANATION - Self-explanatory.

ERROR CODES

- 80106 XXXXXXXX SUB/TAB ERROR FOR FIELD rcc.
- EXPLANATION - An error occurred while processing data through the specified EDIT subroutine or table.
- 80107 NO IMQ DATA WAS CREATED BY FORMAT DATA ENTRY
- COMPONENT WAS NOT EXECUTED.
- EXPLANATION - Self-explanatory.
- 80108 XXXXXXXX TP SERVICE INTERFACE FAILURE.
- EXPLANATION - TP interface to NIPS component failed. See systems programmer.
- 80109 ABSOLUTE IMQ REFERENCES FOLLOW RELATIVE REFERENCES.
- EXPLANATION - A format chained to a format using RELATIVE IMQ reference can not use ABSOLUTE IMQ reference.
- 80110 IMQ CAPACITY EXCEEDED. XXXXXXXX WAS NOT EXECUTED.
- EXPLANATION - The IMQ space was exceeded. This was caused by too many relative IMQ references. Increase the IMQ if the error persists.

ERROR CODES

Section 7

UTILITY COMPONENT

ERROR CODES

This section contains the error codes for the major utility functions provided. Contained within the section are the error codes for TABGEN, DATA CONVERSION, UTBLDISM, and UTQRTQDF functions.

7.1 11XX Series TABGEN Utility Error Codes

- 1101 * BLANK CARD ERROR *
- Cause - A table value card was processed with no argument and function defined. That is, a blank card was encountered.
- 1102 * FREE FORMAT ERROR; NOT TWO FIELDS ON CARD *
- Cause - A table value card was processed with only one field of data. Possibly, there may have been no separating blank character.
- 1103 * FIXED FORMAT ERROR, ONE OF FIELDS BLANK *
- Cause - Only one data item was found in a table value card within the defined boundary.

ERROR CODES

- Cause - For reasons specified in previous message the mentioned table was not generated. Other successfully edited tables in the run were added to the library.
- 1144 * ILLEGAL ALPHA CHARACTER APPEARS IN NUMERIC FIELD *
- Cause - Either the FUNC or ARG parameter specified a nonnumeric value.
- 1145 *SYNTAX ERROR CN DELETE CARD*
- Cause - Unbalanced parentheses or incorrect spacing between table names on DELETE card.
- 1151 * TABLE XXXXXXXXX REPLACED IN (DELETED FROM) LIBRARY, nn PAGES.
- Cause - Self-explanatory.
- 1152 * MORE THAN 25 DIFFERENT LENGTHS CN PAGE YYYYYYYY OR TAELE XXXXXXXX. TABLE NOT ADDED.
- Cause - Self-explanatory.
- #1153 * MORE THAN 132 PAGES IN TABLE XXXXXXXX. TABLE NOT ADDED.
- Cause - Self-explanatory.
- 1154 * MAXIMUM PAGE DIRECTORY SIZE EXCEEDED FOR TAELE XXXXXXXX. TABLE NOT ADDED.
- Cause - The Page Directory, which consists of entries which are determined by the table name and a single argument, has no more space for additional entries. Either the page size is too small or the argument length is too large.

ERROR CODES

To correct the problem, increase the page size request on the table identification card (Page=2K or Page=4K) and resubmit the job. If Page=4K has already been specified, contact system programmer.

1155

* ATTEMPT TO ADD OR CHANGE (DELETE) DIRECTORY MEMBER -YYYYYYY- FOR SYSLMOD DATA SET UNSUCCESSFUL. CODE=(X).

Cause - An unsuccessful attempt was made to update the directory of the data set referenced by the //SYSLMOD DD statement using a STOW macro instruction, due to one of the following causes:

<u>Code</u>	<u>Reason</u>
S	No space left in directory.
I	A permanent I/O error occurred.
N	Table was not found on library for deletion.

For code=S, increase the library directory size and resubmit the job.

For code=I, contact system programmer.

1156

* THE SYSLMOD DATA SET COULD NOT BE OPENED.

Cause - An unsuccessful attempt was made to open the data set referenced by the //SYSLMOD DD statement. Most probable cause is the absence of this DD statement in the job set up. Correct the DD statement and resubmit the job.

The following user ABEND codes may appear during TABGEN:



DEFENSE COMMUNICATIONS AGENCY
COMMAND AND CONTROL
TECHINICAL CENTER
WASHINGTON, D.C. 20301

15 October 1977

IN REPLY
REFER TO:

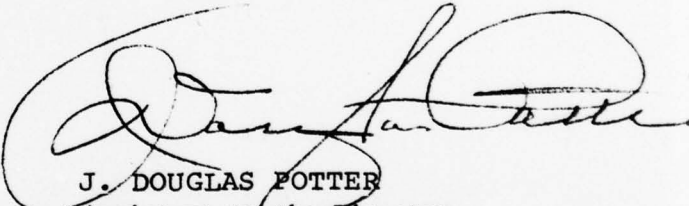
TO: DISTRIBUTION

SUBJECT: Change 3 to CSM UM 15-74, Error Codes,
Volume IX, dated 15 October 1974

1. Insert the enclosed change pages and destroy the replaced pages according to applicable security regulations.
2. A list of Effective Pages to verify the accuracy of this manual is enclosed. This list should be inserted before the title page.
3. When this change has been posted, make an entry in the Record of Changes on the inside cover.

FOR THE DIRECTOR:

61 Enclosures
Change 3 pages


J. DOUGLAS POTTER
Assistant to the Director
for Administration

EFFECTIVE PAGES - 30 September 1977

This list is used to verify the accuracy of CSM UM 15-74, Volume IX, after change 3 pages have been inserted. Original pages are indicated by the letter O, change 3 by the numeral 3.

<u>Page No.</u>	<u>Change No.</u>
Title Page	O
ii	O
iii-v	3
vi	O
1-42	O
43-48	3
49-50	O
51-53	3
53.1-53.2	3
54-56	3
57-74	O
74.1-74.2	O
75-104	O
104.1-104.2	O
105-114	O
115-116	3
117-196	O
197-198	3
198.1-198.2	3
199-204	O
205-206	3
207-216	O
217-218	3
218.1-218.2	3
219-246	O
247-248	3
248.1-248.2	3
249-278	O
278.1-278.2	3
279-280	O
281-281.2	3
282	3
283-288	O

EFFECTIVE PAGES - (continued)

<u>Page No.</u>	<u>Change No.</u>
288.1-288.2	3
289-296	0
297-302	3
302.1-202.2	3
303-312	0
312.1-212.2	0
313-318	0
319-320	3
320.1-320.2	3
321-322	3
322.1-322.2	3
323.1-323.6	0
323.7-324	3
325-356	0
357-358	3
359-373	0

CONTENTS

Section		Page
	ACKNOWLEDGMENT.....	ii
	ABSTRACT.....	vi
1	INTRODUCTION.....	1
2	FILE STRUCTURING ERROR CODES.....	2
2.1	Advisory Messages.....	3
2.2	Error Messages.....	12
2.3	Special Messages.....	34
2.4	Abnormal End Error Messages (USER) ..	36
# 2.5	Index Specification Messages.....	39
2.6	File Revision Control Card Edit Messages.....	43
2.7	File Revision Processing Error Messages.....	44
2.8	File Revision Advisory Messages.....	47
3	FILE MAINTENANCE ERROR CODES.....	48
# 3.1	FM Edit and Library Action Errors...	48
3.2	FM Proper Error Messages.....	71
3.3	NFL Logic Statement Errors.....	79
3.4	FM User ABEND Codes.....	94
# 3.5	Index Maintenance Errors.....	112
4	RETRIEVAL AND SORT PROCESSOR ERROR CODES.....	117
4.1	CXX Series Edit Diagnostics -- General.....	118
4.2	1XX Series-Control Division Statements(FILE, EXECUTE, DELETE)...	119
4.3	2XX Series-TITLE Statements.....	131
4.4	3XX Series-LIMIT Statements.....	136
4.5	36XX Series - KEYWORD Statement.....	149
4.6	4XX Series-IF and FURTHER Statements	150
4.7	5XX Series-Library Actions.....	173
4.8	6XX Series-SORT Statements.....	177
4.9	7XX Series-SELECT Statements.....	183
4.10	8XX Series-Retrieval Proper Messages	185
4.10.1	Termination Messages.....	185
4.10.2	Record Qualification Error Messages.....	192
4.10.3	End-of-Job Information Message Errors.....	193
# 4.11	9XX Series-Keyword Statements and Edit Flag.....	194

	Section		Page
#	4.12	Index Processing Messages.....	199
	4.13	FASP User ABEND Codes.....	205
	5	OUTPUT PROCESSOR ERROR CODES.....	206
#	5.1	FIT Specification Error Messages....	207
	5.2	Control and Program Error Messages..	227
	5.3	OP User ABEND Codes.....	239
	5.4	Post-Publish List.....	242
	6	TERMINAL PROCESSING COMPONENT.....	243
	6.1	TP Monitor/Supervisor.....	243
	6.1.1	Normal Progress Messages.....	243
	6.1.2	Warnings and Errors.....	244
	6.1.2.1	While Paging Through Output.....	244
	6.1.2.2	In Response to a -X Program Request.	245
	6.1.2.3	In Response to a Line of Input Other Than Paging Commands.....	246
#	6.1.3	System Operator's Console - TP Monitor/Supervisor Advisory/ Diagnostic Messages.....	247
	6.1.4	TP Monitor/Supervisor ABEND Codes...	248
	6.1.5	DUMP Error Messages.....	249
	6.1.6	BLAST Error Messages.....	251
	6.1.7	UTILITY ERROR Messages.....	252
	6.2	QUIP Error Messages.....	253
#	6.2.1	QUIP Error Diagnostic Messages.....	253
	6.2.2	QUIP Control and Program Messages...	279
	6.2.3	QUIP User ABEND Codes.....	285
	6.2.4	Secondary Indexing and Keyword Indexing in QUIP.....	286
	6.3	SODA Error Messages.....	286
#	6.3.1	SODA ABEND codes.....	
	6.4	EDIT Error and Diagnostic Messages.....	288.2
#	6.4.1	EDIT Component Error Messages.....	288.2
	6.4.2	COEDIT Error Messages.....	321
#	6.4.3	Batch Component TP Error Messages...	322
	6.5	FCFMATTER Error and Diagnostic Messages.....	323.1
	6.5.1	Definition Phase Error Messages.....	323.2
#	6.5.2	Operational Phase Error Messages.....	323.5
	7	UTILITY COMPONENT ERROR CODES.....	324
	7.1	11XX Series-TAEGEN Utility Error Codes.....	324
	7.2	12XX Series-SUBLDR Utility Error Codes.....	333
	7.3	13XX Series-Data Conversion Error Codes.....	335
	7.4	14XX Series-UTBLDISM Utility Error	

Section		Page
	Codes.....	337
7.5	15XX Series-UTELISAM Utility Error	
	Codes.....	340
7.6	16XX Series-UTQRTQDF Utility Error	
	Codes.....	343
7.7	17XX Series-UTSUECHK Utility Error	
	Codes.....	346
7.8	18XX Series-UTIMELIB Utility Error	
	Codes.....	347
7.9	19XX Series-UTCLASS Utility Error	
	Codes.....	348
7.10	20XX Series UTEFLISCN Error Codes....	344
7.11	21XX Series File Analysis Statistics	
	Error Codes.....	352
7.12	22XX Series UTSOURC Error Codes.....	354
7.12.1	40XX Series UTSOURC ABEND Codes.....	356
# 7.13	Index Transfer Utility.....	356
7.14	Index Specifications Utility.....	357
7.15	Dictionary Maintenance Utility.....	358
7.16	Keyword Analysis Utility.....	364
8	SYSTEM UTILITY ERROR CODES.....	367
	DISTRIBUTION.....	368

ERROR CODES

3331 DUPLICATE SPECIFICATION OF AAAA CPTION

Cause - An INDEX KEYWORD statement has specified more than one name defining the same function (e.g., dictionary, etc.).

Action - Check the SUB/TAB and index statements to make sure everything was defined correctly.

34XX NOTE: Refer to paragraph 3.5 (Index Maintenance Messages) for 34XX messages encountered while using the Index Specification utility.

#35XX NOTE: Refer to paragraph 4.12 (Index Processing Messages) for 35XX messages.

There is one ABEND in Index Specification - Code 9. This occurs only under extremely severe error conditions. Consult the system programmer.

2.6 File Revision Control Card Edit Messages

Error messages immediately follow the printout of an erroneous control card and indicate the type of error that was encountered in the control card. If no errors are detected during editing, a confirmation message is printed.

1000 NC RIGHT PAREN AFTER LEFT PAREN.

Cause - Unbalanced parenthesis in a control statement.

Action - Correct the erroneous card and resubmit the job.

1001 NC LEFT PAREN BEFORE RIGHT PAREN.

Cause - Unbalanced parenthesis in a control statement.

Action - Correct the erroneous card and resubmit the job.

AD-A056 213 NATIONAL MILITARY COMMAND SYSTEM SUPPORT CENTER WASH--ETC F/8 9/2
NMCS INFORMATION PROCESSING SYSTEM 360 FORMATTED FILE SYSTEM (N--ETC(U)
JUN 75

NATIONAL MILITARY COMMAND SYSTEM SUPPORT CENTER WASH--ETC F/G 9/2
NMCS INFORMATION PROCESSING SYSTEM 360 FORMATTED FILE SYSTEM (N--ETC(U)
JUN 75

NMCSSC-CSM-UM-15-74-V9-1/

NL

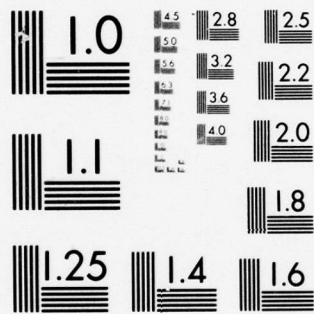
AD
A0562/3

100

END
DATE
FILMED

8-78

DDC



MICROCOPY RESOLUTION TEST CHART
NATIONAL BUREAU OF STANDARDS-1963-A

ERROR CODES

1002 TERM EXCEEDS 16 CHAR MAX.

Cause - Illegal parameter or operand in a control statement.

Action - Correct the card and resubmit the job.

1003 NO FILE NAME SPECIFIED.

Cause - The OLDFILE or FILE parameter was omitted in the control deck.

Action - Specify the file name using the OLDFILE or FILE parameter and resubmit the job.

1004 FIELD XXXXXX NOT FOUND IN OLD FFT.

Cause - Either the user punched a field name in his field change information that did not exist in the old FFT, or he has extraneous information punched in his control deck that FR interpreted as field name change information.

Action - Correct the FR input deck and resubmit the job.

2.7 File Revision Processing Error Messages

These messages are indicative of processing errors that cause the File Revision program to terminate.

2000 ERROR DURING SORT - CALLED FROM ROUTINE FFSUP.

Cause - This message will occur if System/360 CS sort returns a condition code indicating an error was encountered while performing the sort.

Action - Try job. If error persists, contact system programmer.

2001 INVALID NAME CHANGE.

Cause - This message follows an entry in the FFT comparison

ERROR CODES

list. It indicates that a field name change request could not be processed because the new field name could not be found in the new FFT.

Action - Correct the erroneous field change information and resubmit the run.

2002 ILLEGAL MODE CHANGE TO/FROM COORD.

Cause - The user attempted to change a coordinate field to a binary or decimal field or to change a binary or decimal field to a coordinate field. These changes are illogical.

Action - Correct the new FFT and restructure the new file, or correct the field change card that caused the error, and rerun the job.

2003 CCORE NOT AVAILABLE.

Cause - The File Revision program could not obtain sufficient core space for one of its internal tables.

Action - Rerun the job in a larger partition or region.

2004 ILLEGAL RETURN CODE.

Cause - This is indicative of a program error.

Action - See the system programmer.

2005 I/O ERROR - 'FILE NAME'.

Cause - This message indicates that an I/O error occurred when reading or writing the indicated file.

Action - Resubmit the job. If error persists, see system programmer.

2006 FIELD CHANGE CAUSES SET MERGE.

ERROR CODES

- Cause - FR detected that changes in field set numbers cause data from two sets to be moved to one set. FR cannot logically revise the file. This situation could result from the structure of the new PPT, or from field name change requests.
- Action - Correct the situation and resubmit the job. If the user can logically connect the sets, he should run FR in the NO-GO mode, punch the generated statements and adjust them, as required, to perform the desired revisior.
- 2007 TWO OLD FIELDS MOVED TO ONE FIELD.
- Cause - The user has specified a field name change, with a new name that exists in both files.
- Action - Correct either the new PPT or the field name change information, and resubmit the job.
- 2008 NO MAJOR CTL FLD RETAINED.
- Cause - The user has deleted all major control fields. This may happen if control fields are renamed in new PPT and field name change cards have not been provided.
- Action - Correct PB input deck or new PPT and resubmit the job.
- 2009 ILLEGAL MERGE-FIXED TO PER SET.
- Cause - FR detected that a change in a field set number would cause data from the fixed set to be moved to a periodic set. FR cannot logically revise the file.
- Action - Correct the situation and resubmit the job.
- 2010 FR ENDED DUE TO PM IS COMPILE ERRORS.
- Cause - FR detected that PM encountered one or more compila-

ERROR CODES

tion errors during library actions being performed on FR generated logic statements.

Action - Consult system programmer.

2011 NC LOGIC STATEMENTS TO BE COMPILED

Cause - FR did not generate any logic statements to be passed to FM.

Action - Consult system programmer.

2.8 File Revision Advisory Messages

RUN CANCELLED BECAUSE OF FIELD CHANGE ERRORS

Cause - This advisory message is printed just prior to termination. Specific field change errors are identified by individual messages.

Action - Correct errors noted by each message and resubmit the job.

NO ERRORS DETECTED IN INPUT CARDS

Cause - Message confirms corrections of control deck.

Action - No action required.

NO GO OPTIONS SPECIFIED-FR RUN TERMINATED

Cause - Self-explanatory.

Action - No action required.

ERROR CODES

Section 3

FILE MAINTENANCE

ERROR CODES

A numerical listing of all error codes and messages output from the File Maintenance (FM) program is contained in this section. Each error message is followed by the cause of the error and the appropriate action to be taken to correct the error condition. If the file being maintained is indexed, the error codes listed in 3.5, Index Maintenance Errors, are applicable.

3.1 FM Edit and Library Action Errors

- 10000 ABNORMAL TERMINATION OF RUN DUE TO MISSING OR
 INVALID CONTROL CARD.
- Cause - Either the FMS control card contained errors,
 or the control card was not the first card in
 the input stream.
- Action - Correct, or include, the card as the first
 card in the input stream and rerun the job.
- 10001 THE STATEMENT CONTAINS AN ILLEGAL FILE NAME.
- Cause - The name of the file does not conform to
 system standards for data file name. Names
 must contain from one to seven characters with
 no special characters; the first character
 must be alphabetic.
- Action - Correct the name to conform to system
 standards and rerun the job.

ERROR CODES

10013 THE CONTROL CARDS ARE OUT OF SEQUENCE.

- Cause - a. Missing Language Identifier
b. Erroneous END or STOP card
c. No library action cards included in run deck.
- # d. Any misplaced control card. These control cards include ADD REPORT, DELETE REPORT, ADD STATEMENT, or DELETE STATEMENT cards.
- # Action - Review entire deck since an out-of-sequence control card might not be picked up until later on in the processing of the deck. Arrange cards in correct sequence and rerun the job.

10014 THIS STATEMENT CONTAINS CONFLICTING PARAMETERS.

- Cause - On the add report card, a maximum of three ID fields may be specified with a maximum aggregate length of six characters. The statement violated these rules.
- Action - Correct the card to conform to the above specifications and rerun the job.

10015 THE FIELD NAME ON THIS STATEMENT IS INVALID.
DATA FILE FIELD NAMES -

- Cause - The name of the field does not conform to system standards for data file field names. Names must contain from one to seven characters, with no special characters; the first character must be alphabetic.

TRANSACTION DESCRIPTOR -

- Cause - The name of the transaction field does not conform to system standards. Names must contain from one to seven characters, with no special characters; the first character must

ERROR CODES

be alphabetic. The name must be preceded by a \$ and the \$ must be in card column 1.

Action - Correct the name to conform to system standards and rerun the job.

10016 THIS STATEMENT CONTAINS AN INVALID POOL INSTRUCTION TAG.

Cause - The POOL instruction name does not conform to system standards for POOL instruction symbols. Names must contain from one to seven characters with no special characters; the first character must be alphabetic.

Action - Correct the name to conform to system standards and rerun the job.

10017 THERE IS AN ERROR IN THE CONTROL SEQUENCE FIELD ON THE TD CARD.

Cause - In a TD card specifying a major control field, a subset control was also specified.

Action - Check card to determine correct method of specifying major and secondary control fields. Correct and rerun job.

11000 INVALID CONTINUATION SPECIFICATION ON SEGMENT CONTROL CARD.

Cause - Self-explanatory.

Action - Review continuation card rules, correct card and rerun the job.

11001 MISSING OR UNIDENTIFIABLE PARAMETER.

Cause - Self-explanatory.

Action - Review control card specifications. Correct card and rerun the job.

ERROR CODES

- 11002 PARAMETER SPECIFIED AS LOW KEY VALUE EXCEEDS
 HIGH KEY VALUE PARAMETER.
- Cause - Self-explanatory.
- Action - Correct the card and rerun the job.
- 11003 INVALID VOLUME SERIAL NUMBER SPECIFIED IN
 PARAMETER LIST.
- Cause - Volume serial numbers are one to six
 characters long. This number does not conform
 to these standards.
- Action - Correct the card and rerun the job.
- 11004 EXCESSIVE NUMBER OF PARAMETERS SPECIFIED IN
 PARAMETER LIST.
- Cause - Self-explanatory.
- Action - Correct the card and rerun the job.
- 11005 CONFLICTING SEGMENT PROCESSING PARAMETERS WERE
 SPECIFIED FOR THIS RUN; RUN TERMINATED.
- Cause - Self-explanatory.
- Action - Review parameter specified on segment control
 cards, make necessary correction and rerun the
 job.
- 11006 NO SEGMENT CONTROL CARD WAS INCLUDED IN THIS
 SEGMENT GENERATION RUN, RUN TERMINATED.
- Cause - Self-explanatory.
- Action - Include \$SEG control card to define segment
 boundary. Rerun the job.
- 11007 DUPLICATE SEGMENT RECORD AS SPECIFIED BY THE
 \$ADD OR \$SEG CONTROL CARD. RUN TERMINATED.

ERROR CODES

Cause - A segment record already exists with the same key as on segment control card.

Action - Omit the card. Rerun the job.

ERROR CODES

- 11008 SEGMENT RECORD TO BE DELETED/REPLACED DOES NOT
EXIST, NO ACTION TAKEN.
- Cause - Self-explanatory.
- Action - None.
- 20001 THE TRANSACTION FIELD LOCATION EXCEEDS THE
TOTAL TRANSACTION LENGTH.
- Cause - The transaction high-order position is greater
than the length of the transaction as
specified on the ADD statement card.
- Action - Correct the ADD statement card or the TD card
to make them compatible and rerun the job.
- 20002 VARIABLE FIELD POSITION ON TD CARD DIFFERS
FROM POSITION ON ADD STATEMENT CARD.
- Cause - Self-explanatory.
- Action - Correct the cards, so that the cards specify
the same position, and rerun the job.
- 20003 THE VARIABLE TRANSACTION FIELD CANNOT BE USED
AS A CONTROL FIELD.
- Cause - The field is illegal as a control field.
- Action - Remove control indicators from the card and
rerun the job.
- 20004 THE NAMED SUBSET FIELD IS NOT A SUBSET CONTROL
FIELD.
- Cause - The field is illegal as a control field.
- Action - Remove control indicators from the card and
rerun the job.
- 20006 THE TRANSACTION FIELD AND THE SUBSET FIELD ARE
DIFFERENT LENGTHS.

ERROR CODES

- Cause - The transaction field must be the same size as the subset field in the direct subset update mode.
- Action - Change the length, so that they are the same, and rerun the job.
- 20007 SUBSET CONTROL FIELDS SPECIFIED ARE FOR TWO DIFFERENT SETS.
- Cause - Subset control fields must be from the same set.
- Action - Correct the control field references and rerun the job.
- 20008 DUPLICATE INSTRUCTION SYMBOLS.
- Cause - All instruction symbols must be unique within each logic statement. This symbol has been previously defined.
- Action - Make each symbol unique and rerun the job.
- #20009 MORE THAN 500 INSTRUCTION SYMBOLS WERE USED.
- Cause - The maximum has been exceeded.
- Action - Reduce the number of instruction symbols used or use two or more logic statements.
- 20010 THIS STATEMENT CONTAINS A DUPLICATE LOGIC STATEMENT NAME.
- Cause - Statement names must be unique within each report type and each report type must be unique for a file. This statement violates this rule.
- Action - Change references to unique names and rerun the job.
- 20011 THE NUMBER OF LOGIC STATEMENTS BEING COMPILED EXCEEDS MAXIMUM 24.

ERROR CODES

Cause - The maximum has been exceeded.

Action - Reduce the number of logic statements being compiled in one run by using two or more runs to compile logic statements.

20012 INSUFFICIENT TRANSACTION CONTROL INFORMATION WAS SPECIFIED.

Cause - Fields defining the transaction control group must total the same length as the data record control group.

Action - Change the control fields on the TD cards to the length of data record control group and rerun the job.

20013 THE TOTAL TRANSACTION CONTROL FIELD LENGTH EXCEEDS MAXIMUM FOR FILE.

Cause - Fields defining the transaction control group must total the same length as the data record control group. Additional fields may be specified, but field splitting is not permitted.

Action - Change the control fields on the TD cards to the length of data record control group and rerun the job.

20014 INSUFFICIENT TRANSACTION SUBSET CONTROL INFORMATION WAS SPECIFIED.

Cause - Fields defining the subset control information must total the same length as the data record subset control information.

Action - Change the control fields on the TD cards to the length of data record subset control field(s) and rerun the job.

ERROR CODES

3413

INDEX DATA SET LSCB NOT FOUND

Cause - Index Data Set not found. See system error code 213 for explanation of possible causes.

Action - Error terminates the run. Rerun the job. Use backup data file and Index Data Set.

3414

BLOCKSIZE OF INDEX DATA SET NOT BETWEEN 5601020 BYTES.

Cause - Blocksize of Index Data Set not correctly specified.

Action - Insure that blocksize is between 560 and 1020 bytes and rerun the job.

3415

FEWER THAN 50 BLOCKS ALLOCATED TO INDEX DATA SET.

Cause - Number of blocks for Index Data Set not correctly specified.

Action - Insure that at least 50 blocks are allocated for the Index Data Set and rerun the job.

3416

UNABLE TO ALLOCATE CORE FOR I/O BUFFER AREAS. AREAS.

Cause - A GETMAIN error in IXE35INI.

Action - Error terminates the run. Rerun the job. Use backup data file and Index Data Set.

3417

INDEX DATA SET NAME DOES NOT MATCH DATA FILE NAME.

Cause - Index Data Set name not correctly specified.

Action - Insure that data file name and Index Data Set name are the same and rerun the job.

ERROR CODES

3418 NOT ENOUGH BLOCKS SPECIFIED FOR INDEX DATA SET.

Cause - Index Data Set is larger than number of blocks specified.

Action - Error causes run toabend. Specify more blocks for Index Data Set. Rerun the job with backup data sets.

3421 KEYWORD FIELD NNN MEMBER NOT IN IIRARY
-X WHERE NNN IS FIELD ID AND X IS A MEMBER ID:

- 1 - Scan Subroutine
- 2 - Stop Work Table
- 3 - Dictionary

Cause - Self-explanatory.

Action - See the system programmer; use UTNDXSPC to delete and add the field index for proper index data set maintenance.

3423 KEYWORD FIELD NNN MEMBER LOAD FAILURE -
X WHERE NNN IS THE FIELD ID AND X IS A MEMBER ID:

- 1 - Scan Subroutine
- 2 - Stop Word Table
- 3 - Dictionary

Cause - Self-explanatory.

Action - See the system programmer; use UTNDXSPC to delete and add the field index for proper index data set maintenance.

#35XX NOTE: Refer to paragraph 4.12 (Index Processing Messages) for 35XX messages.

ERROR CODES

Cause - The number of right parentheses at this point in the statement exceeds the number of left parentheses.

Action - This retrieval is marked as 'not executable'. All remaining statements in the retrieval are edited. Correct the parameter in error and submit the retrieval in another job.

956 INVALID LITERAL

Cause - The term must be enclosed by literal delimiters (quote or dash). If it is used as a stand-alone data value, it must not contain any of the following character combinations embedded in it:

-) ')
-x 'x
-: ':
-, ',

In addition, it may not contain the following embedded character combination if it is used as a subfield:

-/ '/

Action - This retrieval is marked as 'not executable'. All remaining statements in the retrieval are edited. Correct the parameter in error and submit the retrieval in another job.

961 INVALID NAME

Cause - The name parameter must not exceed seven characters, must begin with an alphabetic character and contain no special symbols.

Action - This retrieval is marked as 'not executable'. All remaining statements in the retrieval are edited. Correct the parameter in error and submit the retrieval in another job.

ERROR CODES

- 962 LABEL TABLE IS FULL
- Cause - The maximum number of field/group names in the retrieval batch exceeds 400.
- Action - This retrieval is marked as 'not executable'. All remaining statements in the retrieval are edited. Reduce the number of retrievals in each batch so that the number of unique names does not exceed 400.
- 964 VARIABLE TABLE IS FULL
- Cause - The maximum number of variables in a single retrieval exceeds 255.
- Action - This retrieval is marked as 'not executable'. All remaining statements in the retrieval are edited. Reduce the size of the retrieval so that the number of variables does not exceed 255.
- 971 TOO MANY LEFT PARENTHESES
- Cause - The count of the number of left parentheses is greater than count of the number of right parentheses at the end of the statement.
- Action - This retrieval is marked as 'not executable'. All remaining statements in the retrieval are edited. Correct the statement and submit the retrieval in another job.
- 999 TEN OR MORE ERRORS IN STATEMENT.
- Cause - The maximum number of 10 errors per statement has been reached.
- Action - The rest of the statement is bypassed. Correct all known errors and resubmit the retrieval.
- #1001 ERRORS FOUND IN THE SYSDATS PARAMETER LIST.

ERROR CODES

Cause - One or more errors were found in processing the SYSDATS parameter string. One or more of the following messages accompanies the above error message:

TOO MANY OR TOO FEW PARAMETERS - Self explanatory.

ERROR IN RELATIONAL OPERATOR - Illegal or unknown relational operator.

INVALID FILE FIELD - Specified file field does not conform to date field rules.

ERROR IN FIRST ADJUSTMENT FACTOR - Self explanatory.

ERROR IN SECOND ADJUSTMENT FACTOR - Self explanatory.

Action - Correct the error and resubmit the retrieval.

ERROR CODES

3535 I/O ERROR ENCOUNTERED WHILE WRITING IXP
DIAGNOSTIC DATA SET.

Cause - Self-explanatory.

Action - Default to file-access mode.

3536 SOURCE STATEMENT MEMBER ON USER LIBRARY NOT
FOUND.

Cause - Self-explanatory.

Action - Default to file-access mode.

#3540 I/O ERROR READING OR WRITING THE INDEX DATA
SET.

Cause - Self-explanatory.

Action - Re-execute the job. If the error persists
compress the index data set with the utility
UTNDXTR and re-execute the job.

4.13 RASP User ABEND Codes

The following RASP User ABEND code may occur in RASP
processing which will cause an abnormal run termination.

707 ERROR COMPIATION ILLEGAL FOR EXECUTE ONLY
PROCEDURE. RUN TERMINATED WITH ABEND 707.

Cause - User attempted to compile a RASP query using
the execute only procedure XRASPEX.

Action - Use the procedure, XRASPEX, or remove the query
from the run deck.

ERROR CODES

Section 5

CUTPUT PROCESSOR

ERROR CODES

Explanation of the error and diagnostic messages for the Output Processor are described in the four groups listed below. Standard OS/360 Job Control, Assembler and Linkage Editor error messages and diagnostics are not described in this document.

1. RIT Specification Error Messages - These are errors which are recognized during the translation and editing of the specification cards during a RIT structure run.
2. Control and Program Error Messages - These are errors which are detected in the Supervisor control cards, in the deck order or in one of the input data sets.
3. OP User ABEND Codes - These are major errors which will cause termination of the OP run.
4. Post Publish List - This is a list of requests not published.

ERROR CODES

- Action - See section 4 of the OP Manual for legal specifications, correct and resubmit.
- 39 ILLEGAL PERIODIC LABEL.
- Cause - Either part of the periodic label specification cannot be identified or the periodic label specification cannot be used on this statement.
- Action - Check periodic label specifications, correct and resubmit.
- 40 FIELD TABLE OVERFLOW.
- Cause - More fields were specified on the statement than can be processed. This should never occur.
- Action - Decrease the number of fields. The statement may have to be broken into multiple statements.
- 41 ILLEGAL CROSS SET LOGIC.
- Cause - Either fields from more than one set have been used in this expression or fields from more than one set have been referenced in this statement.
- Action - Change the expression or statement so that only one set is referenced and resubmit.
- 42 FIELDS ARE NOT THE SAME TYPE.
- Cause - In a conditional (IF) expression, fields to be compared are not equivalent types; for example:
- | | |
|-------------------|---------------------|
| alpha-to-alpha, | numeric-to-numeric, |
| binary-to-binary, | binary-to-numeric, |
| etc., are legal. | |

ERROR CODES

Note: Alpha-to-numeric compares can be made. This comparison will actually be numeric. Alpha-to-binary is illegal. If you desire to compare alpha (such as PARAM) to binary, move the binary field to a numeric (EBCDIC decimal) field first.

Action - Determine the condition which contains fields of incompatible types and correct the group or move one of the fields to the proper literal type before the condition.

#43 ILLEGAL USE OF ARRAY/MATRIX LITERAL

Cause - The statement is attempting to use an array or matrix literal in a manner inconsistent with array/matrix processing.

Action - Correct the statement to either correctly process the array or matrix or reference another type of literal.

50 OVERFLOW IS RG TABLE BLOCK.

Cause - There is not enough room in core for a complete block of statements. A block is all statements pertaining to the same LINEnnn, CARDnnn, RECORDnnn, etc. A block is also a group of action statements all containing set fields or all containing fixed fields.

Action - Either increase the partition size and resubmit or break the block into multiple blocks (LINES, etc.). If the overflow is caused by action statements, group a series of action statements pertaining to sets followed by a group pertaining to fixed fields followed by a group pertaining to sets, etc., until each group individually is small enough to fit into available core.

52 EDIT MASK TOO SHORT.

Cause - The number of replaceable characters in an OP edit mask is less than (1) the output length

ERROR CODES

of a field to be edited, or (2) the output length of a subroutine specified by the user.

Action - Correct the edit mask to equal the output length of the field (or subroutine output) and resubmit the job.

ERROR CODES

INV CNTRL MSG, REENTER LINE. -- User has entered -Y program request, but Y is not in the tables of valid program names. The line was ignored. The user should enter a valid request.

TIME hh mm ss SECS xxx.xx. -- User has entered -T. The first field is time of day, the second is the elapsed time since the most recent previous -X program request (if any). If that program has completed, xxx.xx is the total processing time in seconds and hundredths of a second.

I/O ERR, MSG IGNORED. -- A data error occurred while reading the user's entry. This is not under his control, and he should reenter the line.

NO DATA ON THE OUTPUT MESSAGE QUEUE -- A request for the TEDUMP program is entered when there is no data on the output message queue.

6.1.3 System Operator's Console - TP Monitor/Supervisor Advisory/Diagnostic Messages

TP TERMINALS OPEN. -- Operator can load TP Supervisor job.

TP STANDING REQUEST. REPLY 'MSG', 'ERTY', 'IPS', or 'TPM'. --Operator can ignore. When it is desired to remove TP Supervisor for the purpose of reloading it, reply TPS to cause normal end-of-job. When desired to stop the TP application entirely, reply TPM. The reply of MSG is used when a message is to be sent to a terminal. The reply of PRTY is used to change terminal priorities.

TP SUPERVISOR READY. -- Operator can ignore, or load a second TP Supervisor job, etc.

2250/2260 WRITE ERROR, IGNORED. -- Operator can ignore. Repeated occurrences may indicate a need for IBM PE attention to a problem in the 2250/2260 hardware.

TOO MANY TERMINALS FOR WAIT LIST. -- TERMLIST SYSIN card assigned more than 99 terminals to this TP Supervisor.

ERROR CODES

Reduce the number and reload TPSUP. The number 99 is an assembly parameter.

INVALID KEYWORD IN CCNTFOL CARD. -- SYSIN card does not begin

TERMLIST	=	ALL
		USE
PROGLIST		DELETE

correct it and reload TPSUP.

INVALID ITEM REQUESTED - XXXXXXXX. -- SYSIN card contained an invalid terminal name or program name, where XXXXXXXX is the name. Correct it and reload TPSUP.

NO STMT TERMINATOR ON LAST CARD. -- SYSIN card that says USE or DELETE has no names in list. Insert names or change to ALL, and reload TPSUP. BLDL ERROR -- I/O error while searching JOBLIB directory. Reload TPSUP, possibly altering the JOBLIB DD cards in the TPSUP job deck.

TP MONITOR NOT INITIALIZED. -- TP Supervisor job was started before the TP Monitor job. Load the TP Monitor if not already loaded, and wait for the message TP TERMINALS OPEN. Then reload TP Supervisor job.

END OF OUTPUT QUEUE, PROBLEM PROGRAM TERMINATED -- Further output to the Output Message Queue is stopped. User may page through the Output Message Queue or dump the Output Message Queue. A record has been written by TPSUP at the end of the Output Message Queue, with the following format -- ***TERMINATION RECORD GENERATED BY TPSUP AT END OF OUTPUT MSG QUEUE***

5010 TP MONITOR HAS TERMINATED NORMALLY.

The TP Monitor has terminated normally as the result of the computer operator replying TPM to the outstanding TP reply ID. The UTTPDRVR control program will also end as a result of this condition. No user action is required.

ERROR CODES

- # 5020 TP SUPERVISOR HAS TERMINATED NORMALLY.
- The TP Supervisor has terminated normally as a result of the computer operator replying TPS or TPM to the outstanding TP reply ID. No user action is required.
- # 5015 TPMON HAS ABENDED. S000 U0000.
- The TP Monitor task has ABENDED with an S000 or U0000 error code. The TP Supervisor task will be terminated, and both TPMON and TPSUP will be automatically restarted. If the ABEND persists contact the NIPS Technical Assistance Group for programming support.
- # 5025 TPSUP HAS ABENDED. S000 U0000. Same as message 5015.
- # 5027 TP TERMINAL USERS STILL SIGNED ON. SHCUID TP BE RESTARTED - REPLY YES OR NO.
- *** ACTION REQUIRED BY OPERATOR *** The TP Supervisor has terminated as a result of the computer operator replying TPS or TPM to the outstanding TP reply ID; however, terminal users were still active. The operator must reply with one of the following options:
- YES The TP Monitor and Supervisor will be restarted.
- NO The TP tasks will come to a normal completion, and the UTIPDRV program will end.

6.1.4 TP Monitor/Supervisor ABEND Codes

- 301 Cause - An ECB already has a wait bit set (System ABEND).
- Action - If this is a second TPSUP job, the same terminal is on both TERMLIST cards. If this is the only TPSUP job, TPSUP was

ERROR CODES

- 251 INVALID USE OF COORDINATE LITERAL -
COORDINATE LITERALS ARE REQUIRED TO BE
EITHER A LATITUDE OR A LONGITUDE WHEN NOT
APPEARING AS THE OBJECT OF A GEOGRAPHIC
OPERATOR.
- 252 INVALID NUMERIC LITERAL - BINARY AND
DECIMAL LITERALS MAY NOT BE ENCLOSED IN
QUOTES.
- 253 IF STATEMENT ERROR - ONLY TWO SETS MAY BE
REFERENCED IN A SINGLE CLAUSE. IF TWO
ARE REFERENCED ONE MUST BE THE FIXED SET.
- 254 IF STATEMENT ERROR - SUBJECT AND OBJECT
MODES ARE NOT COMPATIBLE. ALPHA DECIMAL
AND COORDINATE SUBJECTS REQUIRE ALPHA,
DECIMAL AND COORDINATE OBJECTS,
RESPECTIVELY. BINARY SUBJECTS REQUIRE
BINARY OR DECIMAL OBJECTS.
- 255 FEATURE NOT YET AVAILABLE - THIS FEATURE
HAS NOT YET BEEN MADE AVAILABLE IN QUIP.
- 256 INVALID SUBFILE RESTART - SUBFILE ALREADY
ACTIVE. SIGNOFF REQUIRED FIRST.
- #257 SUBFILE RESTART FAILURE - CANNOT ALLOCATE
REQUESTED DATA SET.
- 258 INVALID SUBFILE RESTART - SIGNON MUST BE
FIRST AND ONLY STATEMENT.
- 259 SUBFILE TRACE - TRACE MUST BE THE ONLY
QUERY STATEMENT.
- 260 SUBFILE TRACE - UNIDENTIFIABLE STATEMENT
OPERAND.
- 261 SUBFILE TRACE - SUBFILE FUNCTION IS
INACTIVE.
- 262 SUBFILE TRACE - UNABLE TO LOCATE THE
SUBFILE DATA SET.

ERROR CODES

263	SUBFILE TRACE - SUBFILE DATA SET OPEN FAILURE.
#264	FIND MACRO FAILURE. THE FILE, SUBFILE OR VALID TABLE ENTRY SUBFILE NAME COULD NOT BE FOUND IN THE PDS DIRECTORY.
266	INVALID REFERENCE - THE SORT OPERATOR REFERENCED A FIELD FROM A PERIODIC SET WHICH WAS NOT RETRIEVED WITH A RETRIEVAL STATEMENT.
#267	ADVISORY MESSAGE - INSUFFICIENT CORE TO BUILD AN INCORE PPT FOR THIS FILE. CONTINUED PROCESSING ATTEMPTED.
#269	ALLOCATION FAILURE - DYNAMIC ALLOCATION OF THE DATA FILE WAS UNSUCCESSFUL.
#270	ALLOCATION FAILURE - DYNAMIC ALLOCATION OF THE FILE OR LIBRARY FAILED SINCE SPACE WAS UNAVAILABLE IN THE TASK INPUT OUTPUT TABLE (TIOT).
#271	ALLOCATION FAILURE - THE SECONDARY FILE REQUESTED IS NOT AVAILABLE.
#272	ALLOCATION FAILURE - DYNAMIC ALLOCATION FOR A SECONDARY FILE WAS NOT SUCCESSFUL.
#273	ALLOCATION FAILURE - DYNAMIC CONCATENATION OF A FILE LIBRARY WAS NOT SUCCESSFUL.
#274	ALLOCATION FAILURE - FILE LIBRARY IS NOT AVAILABLE AT THIS TIME.
#275	INVALID FILE REQUEST - ALTERNATE I/O IS REQUIRED FOR ALL FILES IN A QUERY. A REFERENCE HAS BEEN MADE FOR A FILE THAT DOES NOT REQUIRE ALTERNATE I/O.

ERROR CODES

- 1011 SYSTEM ERROR. COULD NOT LOCATE THE
 COMPLETE IF/FIND STATEMENT ON SYSUT1 FOR THE
 SECONDARY INDEXING EXECUTIVE (IPXIXP).
- Cause - A record was read from SYSUT1 containing a
 continuation indicator; however, another
 record with the same read-back key could not be
 found.
- Action - Contact system maintenance for further analysis.
- #1012 QUIP WILL DELAY 5 SECS. AND PROCEED WITH SPACE
 AVAILABLE.
- Cause - No space to allocate work area.
 Online QUIP will wait 5 seconds and try again.
- Action - None.
- 1020 NO RECORDS PASSED THE LIMITS.
- Cause - The query LIMIT statement excluded all records.
- 1021 NO RECORDS QUALIFIED.
- Cause - No records met the conditions of the query.
- 1039 PESIZE PARAMETER WAS ENTERED INCORRECTLY ON
 THE EXEC CARD. SIZE DEFAULTED TO 10000 BYTES.
- Cause - Self-explanatory.
- Action - The correct format is:

 PARM='PB=nK' or PARM='PESIZE=nK'
 where 'n' is between 1 and 99.
- 1040 PERMANENT I/O ERROR WHILE PROCESSING VOLUME
 CONTAINING LIBRARY.
- Cause - Error detected during execution of the OPTSIN
 macro.

ERROR CODES

Action - Rerun job and contact customer engineer if error is repeated.

1041 PROCESS BLOCK EXCEEDS MAX SIZE. FIXED SET FOR
 BLOCK IS - (1st 56 characters).

Cause - The processing block for the specified record
 exceeded the PBSIZE indicated on the EXEC card,

ERROR CODES

or, if the PBSIZE was not specified, the block exceeded the default size of 10K bytes.

Action - Increase the PBSIZE on the EXEC card. The format is:

PARM='PB=nK' or PARM='PBSIZE=nK'
where 'n' is between 1 and 99.

1042 REQUIRED VOLUME OR LIBRARY NOT MOUNTED.

Cause - Self-explanatory.

Action - Rerun job with complete operator instructions.

1043 LIBRARY DATA SET NOT FOUND ON SPECIFIED VOLUME.

Cause - The data set was either scratched, not kept, or not generated, or the wrong volume was specified on the DD card.

Action - Correct the JCL or rebuild the data set.

1044 I/O ERROR ON QDF.

Cause - Self-explanatory.

Action - Rerun job.

1045 I/O ERROR ON QRT.

Cause - Self-explanatory.

Action - Rerun job.

1046 RUN TERMINATED BY SYSTEM CODE nnn.

Cause - Self-explanatory.
(MSG. generated by (IFERR)

Action - See System Maintenance Programmer.

1050 RUN TERMINATED BY SYSTEM CODE

ERROR CODES

Action - SODA was in the process of modifying the Key Dictionary block of the HOID FILE. Some or all of the update may be lost. Try UPDATE or CANCEL commands.

I/O*ERROR**SODA MFX (FILE) (TERMINAL).

Cause - I/O error on HOID FILE.

Action - UPDATE ALL was specified. One or more records could not be updated. All possible records were updated.

I/O*ERROR**SODA MFI (FILE) (TERMINAL) (KEY).

Cause - I/O error encountered during the file update.

Action - All records which could be updated, have been.

#6.3.1 SODA ABEND Codes

3723 File has more than 50 sets. Contact systems maintenance programmer to have set limit increased.

ERROR CODES

6.4 EDIT Error and Diagnostic Messages

EDIT error messages consist of three types: EDIT component error messages, COEDIT error messages, and batch component TP error messages.

6.4.1 EDIT Component Error Messages

The error messages displayed by EDIT are generally self-explanatory, and the necessary corrective action is implied. Additional explanation is provided here following each message.

These messages are written on the Edit Message Queue immediately following the commands they reference.

Each message is identified by a 4-digit number, a 2-digit prefix followed by a 2-digit sequence number; e.g.,

XXYY where:

XX is the prefix digits identifying the EDIT routine where the message is generated

00 = Structure Errors
01-29 = Input/Modification Command
30-59 = Output WCRK Command
60-89 = Output ncn-WORK Command

Prefix-00 messages are a special category of errors not pertinent to any one single command. They apply to entry structure problems applicable to all commands.

yy is the sequence digits enumerating the messages per command.

01-49 = indicates the error occurred during the validity check of the command statement

50-99 = indicates the error occurred during the execution of a command function.

The error codes for the commands are as follows:

ERROR CODES

- EXPLANATION - Command other than FORMAT or SIGNOFF immediately following INSERT is invalid.
- 0514 LINE NUMBER/INDEX CAN BE A MAXIMUM OF EIGHT DIGITS.
EXPLANATION - Self-explanatory.
- 0516 MAXIMUM OF ONE PARAMETER ALLOWED ON INSERT COMMAND.
EXPLANATION - Self-explanatory.
- 0518 INSERT COMMAND INVALID AT THIS POINT.
EXPLANATION - Self-explanatory.
- 0520 INVALID OPERATION. INDEXING IS VALID ONLY IF WORK FILE IS IN SEQUENCE MODE.
EXPLANATION - Self-explanatory.
- 0601 NO WORK FILE. CHANGE COMMAND INVALID.
EXPLANATION - WORK file must be established for a CHANGE command against it to be properly interpreted.
- 0602 INVALID LINE RANGE SPECIFICATION.
EXPLANATION - Operand not recognized as intelligible line number, or upper limit unrecognized as either valid numeric or 'END'.
- 0604 WORK FILE LINE REFERENCE OUT OF SEQUENCE.
EXPLANATION - Commands referencing the WORK file must be entered in ascending sequence.
- 0605 NEGATIVE RANGE SPECIFICATION.
EXPLANATION - Upper limit entered is not algebraically greater than or equal to the lower limit.
- 0606 INCOMPLETE ARGUMENT/FUNCTION OPERAND.

ERROR CODES

EXPLANATION - CHANGE requires the delimiter preceding, between, and following the argument/function pair.

0607 EXTRANEIOUS PARAMETERS ON CHANGE COMMAND.

EXPLANATION - Self-explanatory.

*0608 NO ARGUMENTS BETWEEN DELIMITERS

EXPLANATION - There should be at least one character between delimiters, even if it is a blank. Consecutive delimiters do not qualify for a valid change.

0650 nn RECCRDS CHANGED FROM XX through YY.

EXPLANATION - An advisory message telling the number of lines (records) changed for the range of lines on the CHANGE command.

0702 UNABLE TO SUCCESSFULLY COMPLETE CHANGE FUNCTION.

EXPLANATION - Unrecoverable processing error occurred during execution of CHANGE command.

0800 UNRECOGNIZED OPTION ON MODIFICATION DELETE COMMAND.

EXPLANATION - Option other than valid line or line range specification encountered on modification DELETE command.

0801 NONNUMERIC LOWER LIMIT SPECIFICATION.

EXPLANATION - lower limit entry not recognized as intelligible numeric specification.

0802 UNRECOGNIZED UPPER LIMIT SPECIFICATION.

EXPLANATION - Upper limit specified is neither valid numeric nor 'END'.

0805 INVALID NEGATIVE RANGE SPECIFICATION.

ERROR CODES

- EXPLANATION - Upper limit specified is not algebraically greater than or equal to lower limit.
- 0804 LINE NUMBER SPECIFICATION IS OUT OF ASCENDING SEQUENCE WITH PREVIOUS COMMANDS ENTERED.
- EXPLANATION - Commands referencing the WORK file must be entered in ascending numeric sequence.
- 0806 MODIFICATION-DELETE COMMAND INVALID -- NO ESTABLISHED WORK FILE.
- EXPLANATION - Modification DELETE requires the existence of a WORK file.
- 0900 UNRECOGNIZED KEYWORD PARAMETER ON VERIFY COMMAND.
- EXPLANATION - Keyword parameter other than FILE, VOL, or LIBRARY encountered on command entry.
- 0901 UNRECOGNIZED NIPS COMPONENT IDENTIFICATION.
- EXPLANATION - Code entered was other than FS, FM, RASE, OP, or QUIP.
- 0902 VERIFY COMMAND INCOMPLETE: NIPS COMPONENT REFERENCE MISSING.
- EXPLANATION - NIPS component specification is essential to VERIFY.
- 0903 VERIFY COMMAND INCOMPLETE: FILE SPECIFICATION MISSING.
- EXPLANATION - File name specified is missing or does not conform to OS/360 conventions.
- 0904 LIBRARY OPTION OMISSION INVALID WITH NO PREVIOUSLY ESTABLISHED LIBRARY.
- EXPLANATION - LIBRARY option omission implies previously defined library and requires same.
- 0905 VALID OMISSION INVALID WITH UNCATALOGED FILE.

ERROR CODES

- EXPLANATION - VERIFY requires either a cataloged file or a VALID specification.
- 0906 INVALID LIBRARY NAME SPECIFICATION.
- EXPLANATION - Name specified in the LIBRARY option does not conform to OS/360 conventions.
- 0908 INVALID ATTEMPT TO REFERENCE SECOND LIBRARY PER EDIT PASS.
- EXPLANATION - EDIT restricts library references to one library per EDIT pass.
- 0909 DUPLICATE KEYWORD PARAMETERS ON VERIFY COMMAND.
- EXPLANATION - Self-explanatory.
- 0910 NO WORK FILE EXISTS. VERIFY OPTION IS INVALID.
- EXPLANATION - A WORK file must exist to use the VERIFY option.
- 0914 INVALID VOLUME ID SPECIFICATION.
- EXPLANATION - Volume identification specified does not conform to OS/360 conventions.
- 0915 SPECIFIED FILE IS NOT AN ISAM DATA BASE
- EXPLANATION - The file specified on the /VERIFY command is not an ISAM file.
- 1001 NO PARAMS SPECIFIED
- EXPLANATION - None of the required parameters were specified. As a minimum, a data set name must be specified.
- 1002 MUTUALLY EXCLUSIVE KEYWORD XXXXX
- EXPLANATION - The keyword is either specified more than once or is logically inconsistent with the other parameters.

ERROR CODES

1003 INVALID SIZE REQUEST

EXPLANATION - The SIZE parameter must be four or less numeric digits.

1004 INVALID UNIT REQUEST

EXPLANATION - The UNIT value is not one of the following: 2314, 2311, 2301, 2302, 2303, 2321, 2305, or 3330.

1005 INVALID RECFM REQUEST

EXPLANATION - The RECFM value must be F, FB, V, VB, or U.

1006 INVALID LRECL REQUEST

EXPLANATION - The LRECL value must be four or less numeric digits.

1007 INVALID BLKSIZE REQUEST

EXPLANATION - The BLKSIZE value must be four or less numeric digits.

1008 INVALID PRIMARY ALLOCATION

EXPLANATION - CYL must be three or less numeric digits, TRK four or less digits, and EIK five or less.

1009 INVALID EXTENT REQUEST

EXPLANATION - The EXT value must be three or less numeric digits.

1010 INVALID DIRECTORY BLK REQUEST

EXPLANATION - The DIR value must be one or two numeric digits.

1011 ONLY ONE DSN PERMITTED

ERROR CODES

- EXPLANATION - The second data set name is probably an illegal keyword.
- 1012 INVALID DATA SET NAME
- EXPLANATION - The name does not match the criteria for OS data set names. Tempname must be eight or less characters and permname 44 or less.
- 1013 NO DATA SET NAME SPECIFIED
- EXPLANATION - Self-explanatory. The data set name is a required parameter for either permanent or temporary allocation.
- 1014 DUPLICATE DATA SET NAME SPECIFIED
- EXPLANATION - The tempname coded already exists or the permname already exists on the specified volume.
- 1015 DESIGNATED PACK NOT MOUNTED
- EXPLANATION - Self-explanatory. The pack must be mounted.
- 1016 I/O ERROR ON PACK, RESPECIFY
- EXPLANATION - An I/O error occurred on pack while trying to allocate data set. Try again.
- 1017 VOL KEYWORD REQD FOR PERM DSN
- EXPLANATION - When allocating a permanent data set, VOL=SER=valid is required.
- 1018 TEMP DSN LIMITED TO EIGHT CHARS MAX
- EXPLANATION - Self-explanatory.
- 1019 TEMP DSN IS EDIT RESERVED WORD

ERROR CODES

EXPLANATION - The tempname cannot be an EDIT reserved word. Those words are listed in section 5.9 of the TF Manual.

1020 ILLEGAL CONTINUATION LINE

ERROR CODES

THIS PAGE IS BEST QUALITY PRACTICABLE
FROM COPY FURNISHED TO DDG

6213 INVALID TEMPNAME SPECIFICATION.
EXPLANATION - Tempname specified is not valid
existing data set created by ALLOCATE or HOLD.

6251 INSUFFICIENT CORE AVAILABLE TO EXECUTE DELETE.
EXPLANATION - Self-explanatory.

6252 MEMBER=XXXXXXXX NOT FOUND CN DIRECTORY.
EXPLANATION - Self-explanatory.

6253 UNCORRECTABLE I/C ERROR CN DIRECTORY.
EXPLANATION - Self-explanatory.

6254 UNABLE TO OPEN DATA SET.
EXPLANATION - Self-explanatory.

6255 PREVIOUS REQUEST FOR MEMEER=XXXXXXXX LIB=
EXPLANATION - Member is currently enqueued; it must
be dequeued before deleting.

6551 UNABLE TO OPEN MEM=XXXXXXXX LIB=
EXPLANATION - Self-explanatory.

6552 UNCORRECTABLE I/C ERROR CN MEM=XXXXXXXX LIB=
EXPLANATION - Self-explanatory.

6553 INSUFFICIENT CORE AVAILABLE TO EXECUTE LIST MEM/SAM
REQUEST.
EXPLANATION - Self-explanatory.

6554 MEMBER=XXXXXXXX NOT FOUND CN LIB
EXPLANATION - Self-explanatory.

6555 UNABLE TO OPEN SAM DATA FILE.

THIS PAGE IS BEST QUALITY PRACTICABLE
FROM COPY FURNISHED TO DDC

ERROR CODES

EXPLANATION - Self-explanatory.

6556 UNCONFRECTABLE I/C ERROR CN SAM DATA FILE.

EXPLANATION - Self-explanatory.

6557 UNABLE TO OPEN VTOC DATA SET.

EXPLANATION - Self-explanatory.

#6559 LIST INVALID PCR MEM=XXXXXXXXX LIE=

EXPLANATION - Requested member cannot be listed. Only members created by TPEDIT, UTSOURCE and IEBUFDTE can be listed.

6651 UNABLE TO PROCESS LIST REQUEST.

EXPLANATION - Error occurred during processing of LIST command. Recreate input file and reissue LIST command.

9903 INSUFFICIENT CORE TO INITIATE EDIT. RUN ABORTED.

EXPLANATION - If attempting to VERIFY with COEDIT, the Supervisor region may be too small to bring in the NIPS component translator. If simply using EDIT, wait until there are fewer users.

9904 UNABLE TO OPEN EDCONSL DATA SET. RUN ABORTED.

EXPLANATION - Check the EDCONSOL DD statement in the TP procedure for possible errors.

9905 UNABLE TO ACCESS CONSOLE STATUS RECORD. ENTRY NOT PROCESSED.

EXPLANATION - I/O errors occurred attempting to write to CSR.

9906 DD CARD FOR SLIB DATA SET MISSING. RUN ABORTED.

EXPLANATION - Self-explanatory. Correct the TP procedure.

THIS PAGE IS BEST QUALITY PRACTICABLE
FROM COPY FURNISHED TO DDG

ERROR CODES

9907 UNABLE TO MOVE TIOT TO TASK REGION. RUN ABORTED.
EXPLANATION - This should never happen. Contact
your system programmer.

ERROR CODES

9908 YOUR LIBRARY IS NO LONGER MOUNTED. ENTRY NOT
 PROCESSED.

EXPLANATION - The pack containing the SLIB data set
is no longer mounted.

9909 UNABLE TO INITIATE CCEDIT. SOURCE NOT VERIFIED.

EXPLANATION - TPCREDIT IS NOT A VALID PROGRAM NAME
IN the program list, or it is not on the library.

6.4.2 COEDIT Error Messages

The COEDIT error messages are written on the Edit
Message Queue if errors are encountered while attempting to
initialize the EDIT environment for execution of the NIPS
batch component edit routines.

9501 NO DL CARD IN JOB STREAM FOR - XXX.

EXPLANATION - The specified DDNAME was not found in
the TIOT.

9502 DATA SET NOT FOUND ON VOLUME.

EXPLANATION - The specified data set name was not
found on the volume specified.

9503 UNABLE TO MOVE TIOT TO REGION.

EXPLANATION - The TIOT could not be moved to this
task's region as required for further processing.

9504 UNABLE TO READ OR OPEN XXXXXXXX DATA SET.

EXPLANATION - The specified data set could not be
opened, or I/O errors were encountered while
reading or writing on it.

THIS PAGE IS BEST QUALITY PRACTICABLE
FROM COPY FURNISHED TO DDC

ERROR CODES

6.4.3 Batch Component TP Error Messages

The batch component TP error messages are written on the Edit Message Queue if errors are encountered during program execution in the TP environments under COEDIT.

* The FS, FM, RASP OP or ASM component name will be inserted in the error message as appropriate.

9521 COMPONENT PROGRAM REQUESTED NOT FOUND IN JOBLIB.

EXPLANATION - One or more routines necessary to execute the component cannot be found on the JOBLIB library.

9522 PERMANENT I/O ERROR IN SEARCH OF JOBLIB.

EXPLANATION - Permanent I/O error was encountered while searching JOBLIB directory to ensure all necessary routines are available before component execution.

9523 INSUFFICIENT CORE AVAILABLE FOR COMPONENT EXECUTION.

EXPLANATION - Self-explanatory. Rerun job.

9524 UNABLE TO ALLOCATE DATA SETS REQUIRED FOR COMPONENT TRANSLATOR.

EXPLANATION - Temporary data sets necessary could not be allocated. In most cases this is due to lack of disk space. Rerun job.

9525 RUN TERMINATED IN PMI DUE TO SEVERE ERRORS.

EXPLANATION - Correct all logic statement errors and try again. If problem reoccurs submit a DCR supplying all pertinent information.

9526 RUN TERMINATED IN PMI DUE TO SEVERE ERRORS.

EXPLANATION - See message 9525.

**THIS PAGE IS BEST QUALITY PRACTICABLE
FROM COPY FURNISHED TO DDC**

ERROR CODES

- *9527* RUN TERMINATED IN FMLP DUE TO SEVERE ERRORS.
EXPLANATION - See message 9525.
- *9528* RUN TERMINATED IN FMOM DUE TO SEVERE ERRORS.
EXPLANATION - See message 9525.
- *9529* UNRECOVERABLE ERRORS DETECTED IN EDIT PASS I.
EXPLANATION - Verification of RASP query was terminated during the first syntax pass. Correct errors found in query and verify again.
- *9530* NO RETRIEVAL STATEMENTS ('TITLE', 'IF', 'SORT', 'SELECT', 'LIMIT') FOUND IN INPUT STREAM.
EXPLANATION - Self-explanatory.
- *9531* RUN TERMINATED IN FMTPLIST DUE TO SEVERE ERRORS.
EXPLANATION - See message 9525.
- *9532* RUN TERMINATED IN NFL DUE TO SEVERE ERRORS
EXPLANATION - See message 9525.
- *9534* EXECUTION TERMINATED BY ABEND IN prgname - phasename. ABEND CODE EQUALS nnn system or user TERMINATION.
EXPLANATION - An FM program has ABENDED. The code and message indicate where the error is located. Correct all logic statement errors. If problem re-occurs submit a DCR supplying all pertinent information.
- *9541 ERROR ENCOUNTERED IN *ASMOPT OPTION LIST.
EXPLANATION - Either an invalid option was encountered or the list was not terminated by a blank. Correct the error and rerun.
- *9542 NO INPUT TO ASSEMBLER.

THIS PAGE IS BEST QUALITY PRACTICABLE
FROM COPY FURNISHED TO DDC

ERROR CODES

EXPLANATION - Self-explanatory. Verify that input is on the EDIT work file and rerun. If the problem recurs, contact NIPS Technical Support group.

#9543 I/O ERRORS ON WORK DATA SETS.

EXPLANATION - Self-explanatory. Rerun.

#9544 JCL REQUIRED FOR ASM FUNCTION MISSING.

EXPLANATION - The JCL needed to verify ALC source code is not in the TP procedure. TP must be restarted using a procedure which contains the required JCL. The JCL requirements are set forth in the NIPS Installation manual, TP 54-77.

ERROR CODES

- 80106 XXXXXXXX SUB/TAB ERROR FOR FIELD trcc.

EXPLANATION - An error occurred while processing data through the specified EDIT subroutine or table.
- 80107 NO IMQ DATA WAS CREATED BY FORMAT DATA ENTRY
 - COMPONENT WAS NOT EXECUTED.

EXPLANATION - Self-explanatory.
- 80108 XXXXXXXX TP SERVICE INTERFACE FAILURE.

EXPLANATION - TP interface to NIPS component failed. See systems programmer.
- 80109 ABSOLUTE IMQ REFERENCES FOLLOW RELATIVE REFERENCES.

EXPLANATION - A format chained to a format using RELATIVE IMQ reference can not use ABSOLUTE IMQ reference.
- 80110 IMQ CAPACITY EXCEEDED. XXXXXXXX WAS NOT EXECUTED.

EXPLANATION - The IMQ space was exceeded. This was caused by too many relative IMQ references. Increase the IMQ if the error persists.
- *80111 FORMAT XXXXXXXX IS NOT IN THE LIBRARY.

EXPLANATION - The user requested a format which does not exist on the format library.

THIS PAGE IS BEST QUALITY PRACTICABLE
FROM COPY FURNISHED TO DDC

ERROR CODES

Section 7

UTILITY COMPONENT

ERROR CODES

This section contains the error codes for the major utility functions provided. Contained within the section are the error codes for TABGEN, DATA CONVERSION, UTEICISM, and UTQRTQDF functions.

7.1 11XX Series TABGEN Utility Error Codes

1101

* BLANK CARD ERROR *

Cause - A table value card was processed with no argument and function defined. That is, a blank card was encountered.

1102

* FREE FORMAT ERROR; NOT TWO FIELDS ON CARD *

Cause - A table value card was processed with only one field of data. Possibly, there may have been no separating blank character.

1103

* FIXED FORMAT ERROR, ONE OF FIELDS BLANK *

Cause - Only one data item was found in a table value card within the defined boundary.

ERROR CODES

THIS PAGE IS BEST QUALITY PRACTICABLE
FROM COPY FURNISHED TO DDG

Action - If statistics are desired, specify the data set name and volume and rerun the job.

3603 I/O ERROR OCCURRED WHILE READING FFT OF DATAFILE.

Cause - Self-explanatory.

The index data set transfer is completed but an I/O error on the data file prevented the calculation of statistics.

ABEND 3602 UINDXTRF was unable to open DDNAME INDEXDAM data set ICE.

ABEND 3603 UTNDXTRF was unable to open DDNAME INDEXSAM data set DCB.

ABEND 3604 LTNDXTRF was unable to allocate dynamic core storage.

ABEND 3605 Write I/O error processing DDNAME INDEXSAM.

ABEND 3606 Read I/O error processing DDNAME INDEXDAM.

ABEND 3607 Unable to open DDNAME INDEXSAM data set DCB.

ABEND 3608 Unable to initiate Index Maintenance program.

ABEND 3609 Read I/O error while processing DDNAME INDEXSAM.

#35XX - NOTE Refer to para 4.12 (Index Processing Messages) for 35XX messages.

7.14 Index Specifications Utility

All error messages produced by UTNDXSPC are described in Section 2.5, Index Specification Messages.

ERROR CODES

7.15 Dictionary Maintenance Utility

This section contains an explanation of all messages produced by the UTNDXKMD utility.

Unless noted otherwise, the user action for all errors is to correct the error condition and to resubmit all table and value statements for the table in error. If the table existed before the error run, it will not have been changed by the error run. In addition, if the cause of an error is obvious from the message text, no cause is noted with the error number.

- 3801 FIRST SYSIN IS NOT A TABLE STATEMENT.
- 3802 TABLE STATEMENT CONTINUATION ERROR.
- Cause - A table statement record contains a non-blank character in column 72; it is followed by the beginning of another table statement or by a value statement.
- 3803 UNIDENTIFIABLE KEYWORD.
- Cause - A table statement word followed by an equals symbol cannot be identified.
- 3804 DUPLICATE KEYWORD.
- 3805 INVALID STATEMENT FORMAT
- Cause - A new table statement has been identified (a keyword following a value statement, or a stopword or dictionary keyword following another table statement); the keyword is not a stopword or dictionary, or the stopword or dictionary keyword does not begin in column 1 of the record.
- 3806 INVALID TABLE NAME.
- Cause - The name is greater than seven characters; it does not begin with a letter, or it ends with a zero.