

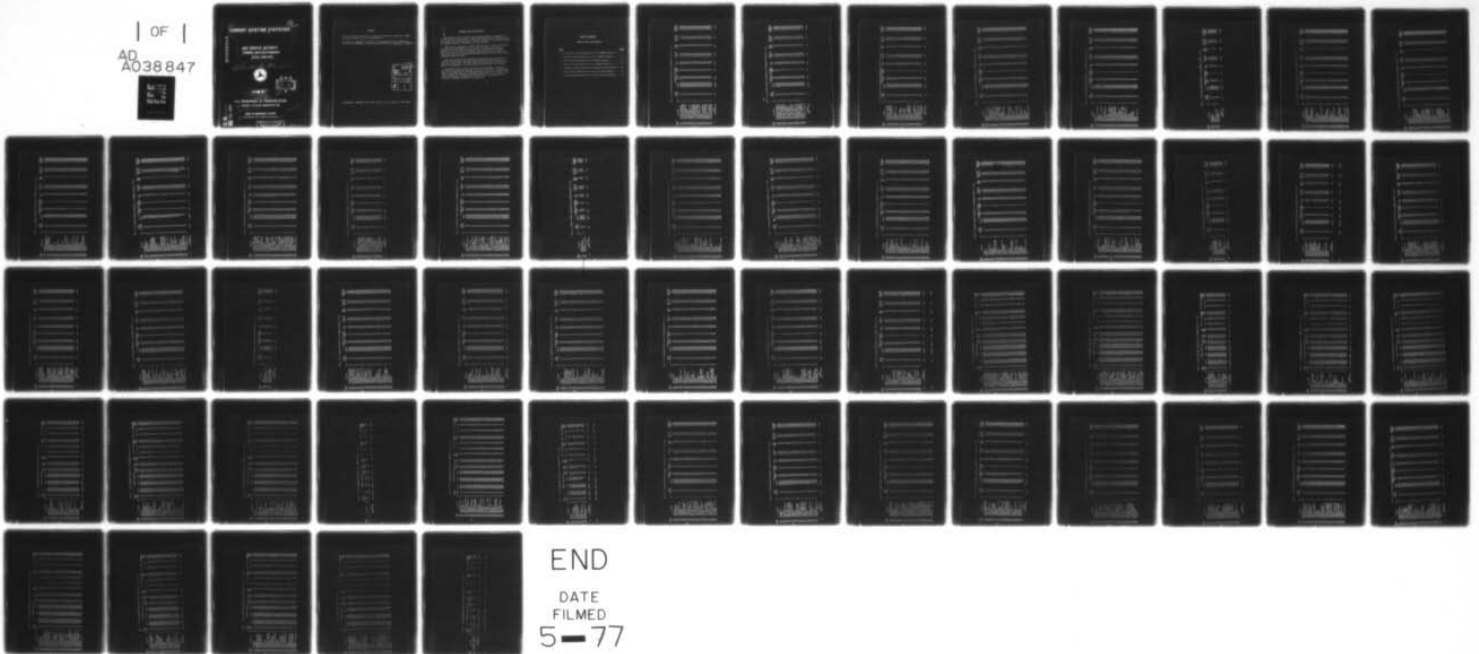
AD-A038 847

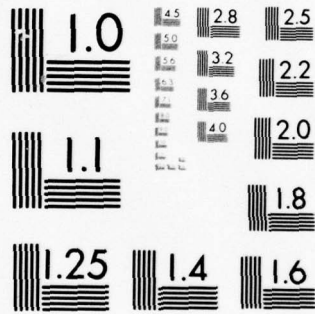
FEDERAL AVIATION ADMINISTRATION WASHINGTON D C INFORM--ETC F/6 1/2  
CURRENT AVIATION STATISTICS. AIR TRAFFIC ACTIVITY. TERMINAL ARE--ETC(U)  
MAR 77 G E THOMPSON

UNCLASSIFIED

NL

| OF |  
AD  
A038847





MICROCOPY RESOLUTION TEST CHART  
 NATIONAL BUREAU OF STANDARDS-1963-A

6  
12 NW  
**CURRENT AVIATION STATISTICS.**

AD A 038847

**AIR TRAFFIC ACTIVITY.  
TERMINAL AREA RELATIONSHIPS.  
FISCAL YEAR 1976 ,**

10 George E. Thompson



DDC  
RECEIVED  
MAY 2 1977

11 MAR 1977

12 59p.

**U.S. DEPARTMENT OF TRANSPORTATION**

1 FEDERAL AVIATION ADMINISTRATION

2 Wash DC

OFFICE OF MANAGEMENT SYSTEMS

3 Information and Statistics Division ✓

AD No. \_\_\_\_\_  
DDC FILE COPY

DISTRIBUTION STATEMENT A  
Approved for public release;  
Distribution Unlimited

SA AD 32605

Inca

PREFACE

"Current Aviation Statistics" is prepared periodically to provide a summary of current aviation statistical information.

This report is prepared in the Office of Management Systems, Information and Statistics Division, Information Operations Branch, by George E. Thompson.

ACCESSION for	
NTIS	White Section <input checked="" type="checkbox"/>
DDC	Buff Section <input type="checkbox"/>
UNANNOUNCED	<input type="checkbox"/>
JUSTIFICATION	
<i>Form 50</i>	
BY	
DISTRIBUTION/AVAILABILITY CODES	
Dist.	Avail. and/or SPECIAL
<i>A</i>	

DISTRIBUTION: ZMS-348G; FAT-0; FAS-1; FFS-1,2,3,5,7; FIA-0; (1 copy only)



## TERMINAL AREA RELATIONSHIPS

The current study of terminal area airport operations encompasses FY 1976 data for 415 airports at which FAA traffic control towers operated the entire twelve months period. These are presented in two primary groups: Air Commerce Airports, and General Aviation Airports.

Each tower is requested to report the peak daily traffic count during the previous twelve months for air carrier, itinerant (including air carrier), total aircraft (including local) and instrument operations. Peak counts for the various categories need not occur on the same day. These peak days can be accurately identified from the daily traffic counts recorded on FAA Form 7230-1.

Busy hour estimates are obtained from periodic counts 60 minutes in duration. These counts are made during known high activity periods of each traffic category. From this sample, tower personnel select a count which is representative of daily busy hour activity for each category.

The tables contain traffic estimates for each airport at which an air traffic control tower operated during all of FY 1976. Provided with peak day and busy hour are average day and hour operations computed from annual operations. Measures of peaking characteristics are given by the ratios of peak day to average day and busy hour to average hour for individual airports and airport size groups.

TABLE OF CONTENTS

TERMINAL AREA RELATIONSHIPS

<u>TABLE</u>	<u>PAGE</u>
1. Air Carrier Aircraft Operations at Air Commerce Airports ...	1
2. Itinerant Aircraft Operations at Air Commerce Airports .....	11
3. Total Aircraft Operations at Air Commerce Airports .....	22
4. Total Instrument Operations at Air Commerce Airports .....	32
5. Itinerant Aircraft Operations at General Aviation Airports .	43
6. Total Aircraft Operations at General Aviation Airports .....	47
7. Total Instrument Operations at General Aviation Airports ...	51

TABLE 1 - AIR CARRIER AIRCRAFT OPERATION AT AIR COMMERCE AIRPORT, FY 1976

LOCAL IDENT	LOCATION	HUB	DAILY HOURS OF GPNS	ANNUAL	AIRCRAFT OPERATIONS - AVERAGE DAY	PLAK LAY	RATIO OF PEAK/AVG DAY	BUSY HOUR OPNS	BUSY HOUR O/O OF AVG DAY	RATIO OF BUSY/AVG HOUR
ORD	CHICAGO OHARE INTL	L	24	542900	1487	1801	1.211	144	9.7	2.323
ATL	ATLANTA INTERNATIONAL	L	24	416604	1141	1243	1.089	104	9.1	2.167
LAX	LOS ANGELES INTERNA	L	24	347656	952	1146	1.204	99	10.4	2.475
DFW	DALLAS FT WORTH REG	L	24	291956	800	896	1.120	84	10.5	2.545
JFK	JOHN F KENNEDY INTL	L	24	282821	775	556	1.234	82	10.6	2.563
SFO	SAN FRANCISCO	L	24	269027	737	897	1.217	71	9.6	2.290
LGA	LA GUARDIA	L	24	258460	708	848	1.198	88	12.4	2.933
DEN	DENVER STAPLETON IN	L	24	211111	578	691	1.196	73	12.6	3.042
BOS	BOSTON LOGAN	L	24	208208	570	702	1.232	58	10.2	2.417
MIA	MIAMI INTERNATIONAL	L	24	207408	568	733	1.285	69	12.1	2.875
DCA	WASHINGTON NATIONAL	L	24	197870	542	630	1.162	58	10.7	2.522
PIT	PITTSBURGH GREATER	L	24	174386	478	566	1.184	53	11.1	2.650
STL	ST LOUIS INTERNATIO	L	24	173429	475	524	1.103	50	10.5	2.500
DTW	DETROIT METRO WAYNE	L	24	160876	441	456	1.034	39	8.8	2.167
MSP	MINNEAPOLIS ST PAUL	L	24	142314	390	417	1.069	42	10.8	2.625
PHL	PHILADELPHIA INTL	L	24	140462	385	436	1.132	38	9.9	2.375
EMR	NEWARK	L	24	127471	349	424	1.215	38	16.6	3.867
IAH	HOUSTON INTERCONTIN	L	24	126380	346	401	1.159	38	11.0	2.714
CLE	CLEVELAND HOPKINS I	L	24	117615	322	359	1.146	41	12.7	3.154
SEA	SEATTLE TACOMA INTL	L	24	113155	310	373	1.203	26	8.4	2.000
MCI	KANSAS CITY INTERNA	L	24	112093	307	372	1.212	40	13.0	3.077
HNL	HONOLULU	L	24	106447	292	411	1.408	36	12.3	3.000
MEM	MEMPHIS INTERNATIONAL	M	24	106014	290	320	1.103	37	12.8	3.083
LAS	LAS VEGAS MCCARRAN	L	24	101060	277	385	1.390	44	15.9	3.667
TPA	TAMPA INTERNATIONAL	L	24	100367	275	363	1.320	29	10.5	2.636
25	VOLUMES		600	5036090	13795	16357	1.186	1501	10.9	2.606
	:00000 AND OVER				576					



TABLE 1 - AIR CARRIER AIRCRAFT OPERATION AT AIR COMMERCE AIRPORT, FY 1976

LOCAL IDENT	LOCATION	HUB	DAILY HOURS OF OPNS	ANNUAL	AIRCRAFT OPERATIONS AVERAGE DAY	PEAK DAY	RATIO OF PEAK/AVG DAY	BUSY HOUR UPNS	BUSY HOUR Q/O OF AVG DAY	RATIO OF BUSY/AVG HOUR
PHX	PHOENIX SKY HARBOR	L	24	91054	249	286	1.149	36	14.5	3.600
MSY	NEW ORLEANS MOISANT	L	24	86097	236	279	1.182	27	11.4	2.700
IND	INDIANAPOLIS MEIR C	M	24	84673	232	357	1.539	23	9.9	2.300
CVG	CINCINNATI GREATER	M	24	81239	223	260	1.166	33	14.8	3.667
PDX	PORTLAND INTERNATIONAL	M	24	77293	212	248	1.170	38	17.9	4.222
BUF	BUFFALO INTERNATIONAL	M	24	75761	208	250	1.202	28	13.5	3.111
MKE	MILWAUKEE MITCHELL	M	24	75106	206	247	1.199	29	14.1	3.222
SAN	SAN DIEGO LINDBERG	M	24	71480	196	189	0.964	13	6.6	1.625
FLL	FORT LAUDERDALE	L	24	71009	195	238	1.477	26	13.3	3.250
CLT	CHARLOTTE DOUGLAS	M	24	69367	190	229	1.205	14	14.7	3.500
MCO	ORLANDO JETPORT	M	24	67541	185	252	1.362	18	9.7	2.250
BAL	BALTIMORE WASHINGTON	M	24	66072	181	210	1.160	21	11.6	2.625
SLC	SALT LAKE CITY INTL	M	24	63417	174	211	1.213	24	13.8	3.429
SJC	SAN JOSE MUNICIPAL	S	24	60294	165	166	1.006	23	13.9	3.286
BDL	WINDSOR LOCKS	M	24	58081	159	196	1.233	24	15.1	3.429
BNA	NASHVILLE METROPOLI	M	24	57721	158	176	1.114	20	12.7	2.857
ANC	ANCHORAGE INTL RAPC	M	24	57369	157	195	1.242	15	9.6	2.143
IAD	WASHINGTON DULLES I	L	24	56974	156	183	1.205	30	19.2	4.286
SDF	LOUISVILLE STANDIFO	M	24	54383	149	176	1.181	20	13.4	3.333
CMH	COLUMBUS INTERNATIONAL	M	24	54229	149	167	1.121	17	11.4	2.833
OAK	OAKLAND INTERNATIONAL	L	24	52910	145	207	1.428	21	14.5	3.500
DAY	DAYTON	M	24	51695	142	186	1.310	17	12.0	2.833
SJU	SAN JUAN INTERNATIONAL	L	24	51034	140	233	1.664	19	13.6	3.167
23	VOLUMES 50000 - 99999		552	1534799	4207	5196	1.235	550	13.1	3.090

TABLE 1 - AIR CARRIER AIRCRAFT OPERATION AT AIR CCMERCE AIRPORT, FY 1976

LOCAL IDENT	LOCATION	HUB	DAILY HOURS OF OPNS	ANNUAL	AVERAGE DAY	AVERAGE HOUR	PEAK DAY	RATIO OF PEAK/AVG DAY	BUSY HOUR UPNS	BUSY HOUR O/O OF AVG DAY	RATIO OF BUSY/AVG HOUR
SAT	SAN ANTONIO INTERNA	M	24	48720	133	6	155	1.165	14	10.5	2.333
OKC	OKLAHOMA CITY MILL	M	24	47504	130	5	163	1.254	19	14.0	3.800
ABQ	ALBUQUERQUE INTERNA	M	24	46088	126	5	135	1.103	17	13.5	3.400
ROC	ROCHESTER MONROE CO	M	24	44150	121	5	150	1.240	26	21.5	5.200
TUL	TULSA INTERNATIONAL	M	24	43911	120	5	138	1.150	20	16.7	4.000
GMA	OMAHA	M	24	42949	118	5	142	1.225	17	14.4	3.400
BHM	MEMPHIS	M	24	40270	110	5	124	1.145	19	17.3	3.800
JAX	JACKSONVILLE INTL	M	24	37028	101	4	125	1.277	14	13.9	3.500
OGG	KAHULUI	M	16	35992	99	6	127	1.263	19	19.2	3.167
TUS	TUCSON	M	24	34778	95	4	106	1.116	6	6.3	1.500
PBI	WEST PALM BEACH	M	24	33351	91	4	131	1.440	16	17.6	4.000
ORF	NORFOLK REGIONAL	M	24	33346	91	4	140	1.536	11	12.1	2.750
ONT	ONTARIO	S	24	32029	88	4	135	1.580	8	9.1	2.000
RDU	RALEIGH DURHAM	M	24	30721	84	4	95	1.115	14	16.7	3.500
SDF	SACRAMENTO METRO	S	24	30631	84	4	115	1.417	18	21.4	4.500
BUR	BURBANK	L	24	30470	83	3	125	1.554	15	16.1	5.000
SYR	SYRACUSE HANCOCK IN	M	24	30428	83	3	161	1.217	13	15.7	4.333
DSM	DES MOINES MUNICIPAL	S	24	29700	81	3	50	1.210	13	16.0	4.333
GEG	SPOKANE INTERNATIONAL	M	24	28542	79	3	106	1.342	12	15.2	2.800
SNA	SANTA ANA	L	16	28150	77	5	54	1.221	14	18.2	4.667
ROA	ROANOKE	S	24	27879	76	3	98	1.285	14	18.4	4.667
ELP	EL PASO INTERNATIONAL	M	24	27489	75	3	87	1.156	9	12.0	3.000
TYS	KNOXVILLE MCGHEE TY	S	24	27480	75	3	87	1.160	10	13.3	3.333
SHV	SHREVEPORT	S	24	27408	75	3	87	1.160	15	20.0	5.000
GSO	GREENSBORO REGIONAL	M	24	27326	75	3	114	1.520	14	18.7	4.667
ALB	ALBANY COUNTY	M	24	26610	73	3	100	1.370	21	28.8	7.000
ICT	WICHITA MID CONTINE	S	24	25476	70	3	95	1.214	12	17.1	4.000
LIT	LITTLE ROCK ADAMS F	S	24	25225	69	3	86	1.246	8	11.6	2.667
	VOLUMES		656	944041	2582	111	3278	1.270	408	15.8	3.676
	25000 - 49999										



TABLE 1 AIR CARRIER AIRCRAFT OPERATION AT AIR COMMENCE AIRPORT, FY 1976

LOCAL IDENT	LOCATION	HUB	DAILY HOURS OF OPNS	ANNUAL	AVERAGE DAY	AIRCRAFT OPERATIONS AVERAGE HOUR	PEAK DAY	RATIO OF PEAK/AVG DAY	BUSY HOUR UPNS	BUSY HOUR U/O OF AVG DAY	RATIO OF BUSY/AVG HOUR
MSN	MADISON	S	24	24557	67	3	50	1.342	10	14.9	3.333
FSD	STIDUX FALLS FOSS FL	S	24	24035	66	3	76	1.152	4	6.1	1.333
LIH	LIHUE	M	16	23734	65	4	51	1.400	14	21.5	3.500
RIC	RICHMOND BYRD INTL	S	24	23640	65	3	78	1.215	7	10.8	2.333
JAN	JACKSON MUN ARPT	S	24	23565	65	3	74	1.138	11	16.9	3.667
GRR	GRAND RAPIDS	S	24	22499	62	3	76	1.258	5	14.5	3.000
GRB	GREEN BAY AUSTIN ST	S	24	22405	61	3	73	1.197	14	23.0	4.667
PVO	PROVIDENCE	S	24	21552	59	2	75	1.335	11	18.8	5.500
RNO	RNO INTERNATIONAL	M	24	21105	58	2	80	1.275	11	19.0	5.500
MOB	MOBILE BATES FIELD	S	24	20283	56	2	61	1.214	10	17.9	5.000
TRI	BRISTOL TRI CITY	S	24	19754	54	2	73	1.352	11	20.4	5.500
ITU	ITU GENERAL LYMAN	M	24	19708	54	2	85	1.648	13	24.1	6.500
FAT	FAIRBANKS	S	24	19334	53	2	78	1.472	8	15.1	4.000
CHA	CHATTANOOGA	S	24	19233	53	2	68	1.203	11	20.8	5.500
CHS	CHARLESTON AFB MUNI	S	24	19151	52	2	72	1.305	10	19.2	5.000
MLI	MOLINE	S	24	19004	52	2	68	1.308	9	17.3	4.500
BIL	BILLINGS	S	24	18969	52	2	62	1.192	12	23.1	6.000
AUS	AUSTIN	S	24	18940	52	2	65	1.327	12	23.1	6.000
CAE	COLUMBIA METROPOLIT	S	24	18847	52	2	100	2.221	11	21.2	5.500
BOI	BOISE	S	24	18760	51	2	77	1.510	10	19.6	5.000
CUS	COLORADO SPRINGS	S	24	18247	50	2	67	1.340	7	14.0	3.500
HVA	HYANNIS	N	17	18229	50	3	52	1.840	13	26.0	4.333
CRM	CHARLESTON	S	24	18222	50	2	51	1.020	17	34.0	8.500
PIA	PEORIA	S	24	17744	49	2	62	1.265	8	16.3	4.000
HSV	HUNTSVILLE MADISON	S	24	17601	48	2	60	1.250	10	20.3	5.000
AGS	AUGUSTA	S	24	16608	46	2	69	1.500	11	23.9	5.500
LBB	LUBBOCK	S	24	16251	45	2	58	1.275	13	28.9	6.500
DAL	DALLAS LOVE FIELD	L	24	16062	44	2	54	1.272	7	15.9	3.500
CID	CEDAR RAPIDS	S	24	16077	44	2	58	1.318	12	29.5	6.500
LAN	LANSING	S	24	15017	44	2	53	2.114	10	22.7	5.000
TOL	TOLEDO EXPRESS	S	24	15795	43	2	60	1.355	7	16.3	3.500
MAF	MIDLAND	S	24	15770	43	2	47	1.055	3	11.6	2.500
LEX	LEXINGTON	S	24	15761	43	2	64	1.468	14	32.6	7.000
SPI	SPRINGFIELD CAPITAL	N	24	15648	43	2	58	1.349	10	23.5	5.000

TABLE 1 - AIR CARRIER AIRCRAFT OPERATION AT AIR COMMERCE AIRPORT, FY 1976

LOCAL IDENT	LOCATION	HUB	DAILY HOURS OF OPNS	ANNUAL	AIRCRAFT OPERATIONS AVERAGE DAY	AVERAGE HOUR	PEAK DAY	RATIO OF PEAK/AVG DAY	BUSY HOUR UPNS	BUSY HOUR G/O OF AVG DAY	RATIO OF BUSY/AVG HOUR
RST	ROCHESTER	S	24	15590	43	2	54	1.256	7	16.3	3.500
GSP	GREER	S	24	15359	42	2	53	1.262	8	19.0	4.000
SUX	SIoux CITY MUNICIPAL	S	24	15110	41	2	54	1.317	10	24.4	5.000
CSG	COLUMBUS	S	24	14833	41	2	58	1.415	10	24.4	5.000
PWM	PORTLAND	S	16	14453	40	3	65	1.625	9	22.5	3.000
FAT	FRESNO AIR TERMINAL	S	24	14262	39	2	48	1.231	7	17.9	3.500
DLH	DULUTH	S	24	13721	38	2	53	1.395	8	21.1	4.000
KOA	KONA KE AHOLE	S	16	13711	38	2	60	1.579	10	26.3	5.000
FSM	FORT SMITH MUNICIPAL	N	24	13635	37	2	47	1.270	8	21.6	4.000
AVL	ASHEVILLE	S	24	13618	37	2	46	1.243	8	21.6	4.000
AMA	AMARILLO	S	24	13584	37	2	47	1.270	5	13.5	2.500
BTV	BURLINGTON INTERNAT	N	24	13247	36	2	64	1.778	9	25.0	4.500
BTR	BATON ROUGE RYAN FI	S	24	13177	36	2	46	1.278	9	25.0	4.500
MGM	MONTGOMERY DANNELLY	S	24	13117	36	2	48	1.333	7	19.4	3.500
CMI	CHAMPAIGN UNIV OF I	N	24	12759	35	1	40	1.143	6	17.1	4.000
CAK	AKRON CANTON REGION	S	24	12725	35	1	51	1.457	12	34.3	12.000
SRQ	SARASOTA BRADENTON	S	18	12643	35	2	52	1.486	9	25.7	4.500
TLH	TALLAHASSEE	S	24	12589	34	1	44	1.294	8	23.5	8.000
GTF	GREAT FALLS	S	24	12523	34	1	49	1.441	5	14.7	5.000
LNK	LINCOLN MUNICIPAL	S	24	12334	34	1	49	1.441	5	14.7	5.000
DAB	DAYTONA BEACH	S	24	12297	34	1	58	1.706	6	17.6	6.000
BPT	BEAUMONT PORT ARTHU	N	24	12040	33	1	60	1.818	8	24.2	8.000
FAY	FAYETTEVILLE GRANNI	S	24	11883	33	1	48	1.455	12	36.4	12.000
EVV	EVANSVILLE	S	24	11854	32	1	40	1.250	6	18.8	6.000
ACK	NANTUCKET MEMORIAL	N	16	11788	32	2	79	2.469	12	37.5	6.000
SNB	SOUTH BEND	S	24	11656	32	1	54	1.688	15	46.9	15.000
ALO	MATERLOO	S	18	11250	31	2	43	1.387	11	35.5	5.500
MDT	MIDDLETON	S	24	11197	31	1	28	0.903	8	25.8	8.000
HTS	HUNTINGTON	N	16	11186	31	1	27	0.871	8	25.8	8.000
PHF	NEWPORT NEWS	S	24	11149	31	1	46	1.484	8	25.8	8.000
INT	WINSTON SALEM	M	16	10826	30	2	107	3.567	24	80.0	12.000
MLU	MONROE	N	24	10733	29	1	34	1.172	7	24.1	7.000
EUG	EUGENE	S	24	10678	29	1	40	1.379	4	13.8	4.000
MBS	SAGINAW TRI CITY	S	24	10653	29	1	29	1.000	8	27.6	8.000

TABLE 1 - AIR CARRIER AIRCRAFT OPERATION AT AIR COMMERCE AIRPORT, FY 1976

LOCAL IDENT	LOCATION	HUB	DAILY HOURS OF OPNS	ANNUAL	AIRCRAFT AVERAGE DAY	OPERATIONS AVERAGE HOUR	PEAK DAY	RATIO OF PEAK/AVG DAY	BUSY HOUR OPNS	BUSY HOUR O/D OF AVG DAY	RATIO OF BUSY/AVG HOUR
AZO	KALAMAZOO	S	24	10480	29	1	41	1.414	6	20.7	6.000
SGF	SPRINGFIELD	S	24	10342	28	1	39	1.393	7	25.0	7.000
BIS	BISHARCK	N	24	10218	28	1	36	1.286	8	28.6	8.000
CPR	CASPER	N	16	10214	28	2	28	1.000	1	3.6	0.500
SMX	SANTA MARIA PUBLIC	N	12	10189	28	2	40	1.429	10	35.7	5.000
FWA	FORT WAYNE	S	24	10172	28	1	37	1.321	8	28.6	8.000
CRP	CORPUS CHRISTI	S	24	10100	28	1	34	1.214	6	21.4	6.000
	VOLUMES		1713	1157032	3173	140	4431	1.396	699	22.0	4.993
	10000 - 24999										



TABLE 1 - AIR CARRIER AIRCRAFT OPERATION AT AIR COMMERCE AIRPORT, FY 1970

LOCAL IDENT	LOCATION	HUB	DAILY HOURS OF OPS	ANNUAL	AIRCRAFT OPERATIONS AVERAGE DAY	AVERAGE HOUR	PEAK LAY	RATIO OF PEAK/AVG LAY	BUSY HOUR UPNS	BUSY HOUR 0/0 OF AVG DAY	RATIO OF BUSY/AVG HOUR
ILM	WILMINGTON NEW HANO	N	24	9850	27	1	35	1.296	6	29.6	8.000
FAR	FARGO HECTOR FIELD	S	24	9770	27	1	37	1.370	7	25.5	7.000
LEB	LEBANON	N	16	9524	26	2	30	1.154	6	23.1	3.000
ABE	ALLENSTOWN	S	24	9431	26	1	31	1.192	6	23.1	6.000
PSP	PALM SPRINGS MUNICI	S	16	9431	26	2	44	1.692	10	30.5	5.000
SAV	SAVANNAH MUNICIPAL	S	24	8998	25	1	36	1.440	7	28.0	7.000
SRI	SRIE	S	24	8918	24	1	48	2.000	9	37.5	9.000
MRY	MONTEREY	S	24	8917	24	1	34	1.417	3	12.5	3.000
RAP	RAPID CITY	S	16	8833	24	2	29	1.208	6	25.0	3.000
FNT	FLINT BISHOP	S	24	8704	24	1	33	1.375	5	20.8	5.000
LYH	LYNCHBURG	N	16	8577	23	1	42	1.826	6	26.1	6.000
SCK	STUCKTON	N	24	8576	23	1	35	1.522	4	17.4	4.000
GFK	GRAND FORKS INTERNA	N	16	8524	23	1	28	1.217	8	34.8	8.000
PNS	PENSACOLA	S	24	8394	23	1	44	1.915	6	26.1	6.000
MKG	MUSKEGON	N	24	8018	22	1	26	1.182	4	18.2	4.000
LFT	LAFAYETTE	N	24	8008	22	1	29	1.318	7	31.8	7.000
ISP	ISLIP MACARTHUR	S	24	7877	22	1	34	1.545	7	31.8	7.000
FYV	FAYETTEVILLE DRAKE	N	16	7877	22	1	28	1.273	8	36.4	8.000
ELM	ELMIRA	N	24	7694	21	1	30	1.429	5	23.8	5.000
ESF	ALEXANDRIA	N	14	7563	21	2	26	1.238	6	28.6	3.000
GJT	GRAND JUNCTION	S	16	7561	21	1	78	3.714	6	28.6	6.000
HLB	MELBOURNE	S	16	7517	21	1	26	1.238	3	14.3	3.000
BGR	BANGOR INTERNATIONAL	S	24	7501	21	1	46	2.150	7	33.3	7.000
CYS	CHEYENNE	N	24	7480	20	1	26	1.300	5	25.0	5.000
TTN	TRENTON	N	24	7372	20	1	50	2.500	4	20.0	4.000
GPT	GULFPORT	N	17	7136	20	1	30	1.500	5	45.0	9.000
OSH	OSHKOSH WITTMAN FIE	N	16	7129	20	1	27	1.350	6	30.0	6.000
PFN	PANAMA CITY BAY COU	N	17	7044	19	1	28	1.474	6	31.6	6.000
YNG	YOUNGSTOWN	S	24	7038	19	1	30	1.579	5	26.3	5.000
DEC	DECATUR	S	18	6994	19	1	25	1.316	6	31.6	6.000
LGB	LONG BEACH	L	24	6868	19	1	40	2.105	3	15.8	3.000
IDA	IDAHO FALLS FANNING	S	16	6863	19	1	32	1.211	6	31.6	6.000
JNU	JUNEAU	S	16	6831	19	1	23	1.684	6	31.6	6.000
BGM	BINGHAMTON BROOME C	N	24	6792	19	1	25	1.316	6	31.6	6.000

TABLE 1 - AIR CARRIER AIRCRAFT OPERATION AT AIR COMMERCE AIRPORT, FY 1976

LOCAL IDENT	LOCATION	HUB	DAILY HOURS OF DPNS	ANNUAL	AIRCRAFT OPERATIONS AVERAGE DAY	AVERAGE HOUR	PEAK DAY	RATIO OF PEAK/AVG DAY	BUSY HOUR OPNS	BUSY HOUR % OF AVG DAY	RATIO OF BUSY/AVG HOUR
PIH	PUCATELLO	N	16	6747	18	1	24	1.333	4	22.2	4.000
JLN	JOPLIN	N	16	6732	18	1	24	1.333	0	33.3	6.000
FAN	FARMINGTON	N	24	6709	18	1	30	1.667	0	44.4	8.000
DHN	DOTHAN	N	16	6640	18	1	24	1.333	6	33.3	6.000
CHO	CHARLOTTESVILLE ALB	N	16	6566	18	1	20	1.111	7	38.9	7.000
STT	ST THOMAS H S TRUMA	S	16	6516	18	1	33	1.833	6	33.3	6.000
BFL	BAKERSFIELD MEADOWS	N	18	6483	18	1	24	1.333	4	22.2	4.000
PAH	PADUCAH BARKLEY FIE	N	17	6429	18	1	26	1.444	7	38.9	7.000
SBA	SANTA BARBARA	S	16	6398	18	1	23	1.278	4	22.2	4.000
AVP	WILKES BARRE	S	24	6247	17	1	26	1.529	6	35.3	6.000
LCH	LAKE CHARLES	N	16	5950	16	1	16	1.000	3	18.8	3.000
COU	COLUMBIA REGIONAL	N	16	5935	16	1	16	1.125	4	25.0	4.000
STX	ST CROIX ALEX HAMIL	N	14	5925	16	1	24	1.500	8	50.0	8.000
EWB	NEW BEDFORD	N	16	5763	16	1	35	2.188	8	50.0	8.000
PKB	PARKERSBURG WOOD CO	N	16	5711	16	1	24	1.500	2	31.3	5.000
YKM	YAKIMA AIR TERMINAL	N	17	5656	15	1	18	1.200	4	26.7	4.000
ASE	ASPEN PITKIN COUNTY	N	16	5407	15	1	24	1.267	7	46.7	7.000
HLR	HARLINGEN INDUSTRIA	N	16	5349	15	1	15	1.067	3	20.0	3.000
LSE	LA CROSSE	N	16	5147	14	1	24	1.714	7	50.0	7.000
MSD	MISSOULA	N	16	5140	14	1	16	1.143	5	35.7	5.000
BEH	BENTON HARBOR ROSS	N	14	5111	14	1	18	1.286	4	28.6	4.000
TKK	TEXARKANA	N	24	5104	14	1	20	1.429	4	28.6	4.000
EWN	NEW BERN	N	15	5054	14	1	18	1.286	5	35.7	5.000
MCN	MACON LEWIS B WILSO	N	24	5014	14	1	32	2.286	8	57.1	8.000
MFR	MEDFORD JACKSON COU	S	24	4969	14	1	22	1.571	7	50.0	7.000
FMY	FORT MYERS PAGE FIE	S	16	4951	14	1	28	2.000	4	28.6	4.000
HOT	HOT SPRINGS MEMORIA	N	16	4862	13	1	16	1.231	7	53.8	7.000
PSC	PASCO TRI CITIES	N	16	4819	13	1	16	1.231	5	38.5	5.000
TVL	SOUTH LAKE TAHOE	N	15	4800	13	1	25	2.231	6	46.2	6.000
GRI	GRAND ISLAND	N	16	4761	13	1	20	1.536	6	46.2	6.000
PUB	PUEBLO	N	24	4740	13	1	24	1.846	7	53.8	7.000
AKN	KING SALMON	N	12	4738	13	1	35	3.000	11	84.6	11.000
TOP	TOPEKA PHILIP BALLA	N	24	4717	13	1	20	1.538	5	23.1	5.000
ABY	ALBANY	N	16	4684	13	1	18	1.365	4	30.8	4.000



TABLE 1 - AIR CARRIER AIRCRAFT OPERATION AT AIR COMMERCE AIRPORT, FY 1976

LOCAL IDENT	LOCATION	HUB	DAILY HOURS OF OPNS	ANNUAL	AIRCRAFT OPERATIONS AVERAGE DAY	AVERAGE HOUR	PEAK DAY	RATIO OF PEAK/AVG DAY	BUSY HOUR CPNS	BUSY HOUR O/0 OF AVG DAY	RATIO OF BUSY/AVG HOUR
HLN	HELENA	N	24	4647	13	1	20	1.538	8	61.5	8.000
TCL	TUSCALOOSA VAN DE G	N	14	4576	13	1	20	1.538	5	38.5	5.000
ITH	ITHACA TOMPKINS CO	N	12	4343	12	1	24	2.000	6	50.0	6.000
LAW	LAWTON MUNICIPAL	N	16	4282	12	1	16	1.333	4	33.3	4.000
GLH	GREENVILLE MUNICIPAL	N	15	4199	12	1	16	1.333	4	33.3	4.000
ISO	KINSTON	N	9	4180	11	1	18	1.636	6	54.5	6.000
DBQ	DUBUQUE	N	16	4053	11	1	19	1.727	6	54.5	6.000
MHT	MANCHESTER	N	17	4022	11	1	21	1.909	4	36.4	4.000
UCA	UTICA	N	24	4011	11	0	12	1.091	3	27.3	0.000
GNV	GAINESVILLE	N	16	3909	11	1	22	2.000	13	118.2	13.000
KOW	ROSWELL	N	16	3907	11	1	16	1.455	4	36.4	4.000
ACT	WACO MUNICIPAL	N	24	3832	10	0	20	2.000	8	80.0	0.000
IPL	IMPERIAL	N	14	3795	10	1	12	1.200	4	40.0	4.000
MFE	MCALLEN	N	16	3585	10	1	16	1.600	5	50.0	5.000
MEI	MERIDIAN KEY	N	16	3573	10	1	14	1.400	3	30.0	3.000
HKY	HICKORY	N	15	3557	10	1	18	1.800	9	90.0	9.000
BKL	CLEVELAND BURKE LAK	L	16	3498	10	1	35	3.500	10	100.0	10.000
ABI	ABILENE	N	24	3358	9	0	17	1.889	4	44.4	0.000
JXN	JACKSON REYNOLDS MU	N	16	3358	9	1	14	1.556	4	44.4	4.000
TWF	TWIN FALLS	N	12	3198	9	1	25	2.778	3	33.3	3.000
LWS	LEWISTON	N	16	3187	9	1	14	1.556	4	44.4	4.000
TVC	TRAVERSE CITY	N	12	3149	9	1	29	3.222	6	66.7	6.000
RDD	REDDING	N	13	3034	8	1	10	1.250	3	37.5	3.000
CGI	CAPE GIRARDEAU MUNI	N	16	2941	8	1	12	1.500	4	50.0	4.000
RFD	ROCKFORD	N	24	2926	8	0	18	2.250	6	75.0	0.000
LMT	KLAMATH FALLS	N	24	2880	8	0	12	1.500	4	50.0	0.000
BRD	BROWNSVILLE INTERNA	N	24	2862	8	0	9	1.125	2	25.0	0.000
ORH	WORCESTER	N	24	2819	8	0	16	2.000	4	50.0	0.000
HVN	NEW HAVEN	N	18	2786	8	0	12	1.500	5	62.5	0.000
DET	DETROIT CITY	L	24	2738	8	0	20	2.500	5	62.5	0.000
MOD	MODesto CITY COUNTY	N	18	2644	7	0	12	1.714	4	57.1	0.000
HPN	WHITE PLAINS WESTCH	N	24	2552	7	0	14	2.000	3	42.9	0.000
GGG	LONGVIEW	N	24	2551	7	0	13	1.857	5	71.4	0.000
TYR	TYLER	N	24	2521	7	0	14	2.000	6	85.7	0.000

TABLE 1 - AIR CARRIER AIRCRAFT OPERATION AT AIR COMMERCE AIRPORT, FY 1976

LOCAL IDENT	LOCATION	HUB	DAILY HOURS OF OPNS	ANNUAL	AIRCRAFT OPERATIONS - AVERAGE DAY	AVERAGE HOUR	PEAK DAY	RATIO OF PEAK/AVG DAY	BUSY HOUR OPNS	BUSY HOUR % OF AVG DAY	RATIO OF BUSY/AVG HOUR
SCC	DEADHORSE	N	16	2470	7	0	18	2.571	4	57.1	0.000
MDM	CHICAGO MIDWAY	L	24	2465	7	0	25	3.571	5	71.4	0.000
IPT	MILLIAMSPORT	N	24	2371	6	0	12	2.000	4	66.7	0.000
CIC	CHICO	N	13	2352	6	0	12	2.000	4	66.7	0.000
SJT	SAN ANGELO	N	24	2306	6	0	14	2.333	4	66.7	0.000
HOB	HOBBS LEA COUNTY	N	24	2297	6	0	10	1.667	3	50.0	0.000
BMI	BLOOMINGTON NORMAL	N	12	2287	6	1	22	3.667	10	166.7	10.000
LWB	LEWISBURG GREENBRIE	N	8	2256	6	1	12	2.000	4	66.7	4.000
VLD	VALDOOSTA MUNICIPAL	N	16	2184	6	0	8	1.333	3	50.0	0.000
MHU	MORRISTOWN	L	16	2164	6	0	14	2.333	4	66.7	0.000
PDT	PENLETON	N	16	1981	5	0	6	1.200	2	40.0	0.000
SLN	SALINA	N	16	1932	5	0	13	2.600	4	80.0	0.000
JVL	JANESVILLE	N	16	1907	5	0	8	1.600	4	80.0	0.000
AHN	ATHENS CLARKE COUNT	N	15	1881	5	0	11	2.200	5	100.0	0.000
WDG	ENID WOODRING MUNIC	N	14	1811	5	0	9	1.800	4	80.0	0.000
ILG	WILMINGTON GR WILM	N	24	1614	4	0	26	6.500	1	25.0	0.000
GCN	GRAND CANYON MUNICI	N	12	1578	4	0	10	2.500	4	100.0	0.000
ADQ	KODIAK	N	16	1552	4	0	10	2.500	3	75.0	0.000
SLE	SALEM McNARY FIELD	N	16	1419	4	0	8	2.000	2	50.0	0.000
MGM	MORGANTOWN	N	16	1418	4	0	12	3.000	4	100.0	0.000
MCE	MERCED	S	8	1390	4	1	4	1.000	2	50.0	2.000
CKB	CLARKSBURG BENEDUH	N	16	1381	4	0	6	1.500	2	50.0	0.000
IAG	NIAGARA FALLS	N	24	962	3	0	24	8.000	8	266.7	0.000
ACY	ATLANTIC CITY	N	24	892	2	0	16	8.000	8	400.0	0.000
GBG	GALESBURG MUNICIPAL	N	11	860	2	0	5	2.500	2	100.0	0.000
KWA	KWAJALEIN AAF	N	16	638	2	0	4	2.000	2	100.0	0.000
VDZ	VALDEZ	N	10	576	2	0	4	2.000	2	100.0	0.000
HLG	WHEELING	N	24	348	1	0	18	18.000	10	1000.0	0.000
PSE	PONCE MERCEDITA	N	16	293	1	0	5	5.000	4	400.0	0.000
CRE	MYRTLE BEACH	N	10	93	0	0	2	0.000	1	0.0	0.000
BHG	BLOOMINGTON MONROE	N	12	11	0	0	3	0.000	0	0.0	0.000
DXR	OXNARD VENTURA COUN	N	16	10	0	0	28	0.000	1	0.0	0.000
HUT	HUTCHINSON	N	16	2	0	0	2	0.000	2	0.0	0.000
PBF	PINE BLUFF GRIDER F	N	16	0	0	0	0	0.000	0	0.0	0.000
136	VOLUMES LESS THAN 10000		2465	628564	1724	96	2958	1.716	695	40.3	7.240

TABLE 2 - ITINERANT AIRCRAFT OPERATION AT AIR COMMERCE AIRPORT, FY 1970

LOCAL IDENT	LOCATION	HUB	DAILY HOURS OF OPNS	ANNUAL	AIRCRAFT OPERATIONS AVERAGE DAY	AVERAGE HOUR	PEAK DAY	RATIO OF PEAK/AVG DAY	BUSY HOUR UPNS	BUSY HOUR U/O OF AVG DAY	RATIO OF BUSY/AVG HOUR
ORD	CHICAGO OHAKE INTL	L	24	692029	1896	79	2257	1.190	171	9.0	2.165
ATL	ATLANTA INTERNATIONAL	L	24	468920	1285	54	1462	1.133	114	8.9	2.111
LAX	LOS ANGELES INTERNA	L	24	458862	1257	52	233	0.185	28	2.2	0.536
DEN	DENVER STAPLETON IN	L	24	382095	1047	44	1313	1.254	123	11.7	2.795
DFW	DALLAS FT WORTH REG	L	24	351343	963	40	1104	1.146	89	9.2	2.225
SFO	SAN FRANCISCO	L	24	337750	925	39	1120	1.211	87	9.4	2.231
PHX	PHOENIX SKY HARBOR	L	24	336325	921	38	1502	1.631	145	15.7	3.816
JFK	JOHN F KENNEDY INTL	L	24	335636	920	38	1072	1.165	110	12.0	2.895
LGA	LA GUARDIA	L	24	335379	919	38	1182	1.266	100	10.9	2.632
SNA	SANTA ANA	L	16	316933	868	54	1294	1.491	156	16.2	2.926
STL	ST LOUIS INTERNATIONAL	L	24	313265	858	36	1147	1.337	94	11.0	2.611
DCA	WASHINGTON NATIONAL	L	24	312589	856	36	1160	1.355	93	11.4	2.722
PHL	PHILADELPHIA INTL	L	24	300937	825	34	1084	1.314	96	11.6	2.824
LGB	LONG BEACH	L	24	299308	820	34	1270	1.549	141	17.2	4.147
PIT	PITTSBURGH GREATER	L	24	288871	791	33	1053	1.331	99	12.5	3.000
MIA	MIAMI INTERNATIONAL	L	24	288382	790	33	1214	1.537	104	13.2	3.152
BOS	BOSTON LOGAN	L	24	287966	789	33	1167	1.479	95	12.0	2.879
MEM	MEMPHIS INTERNATIONAL	M	24	282947	775	32	1093	1.410	96	12.4	3.000
HNL	HONOLULU	L	24	272407	746	31	976	1.308	92	12.3	2.968
MSP	MINNEAPOLIS ST PAUL	L	24	252632	692	29	852	1.231	73	10.5	2.517
DTW	DETROIT METRO WAYNE	L	24	242647	665	28	577	0.567	32	4.8	1.143
LAS	LAS VEGAS MCCARRAN	L	24	241227	661	28	538	0.814	104	15.4	3.643
FLL	FORT LAUDERDALE	L	24	236836	649	27	981	1.512	103	15.9	3.815
SJC	SAN JOSE MUNICIPAL	S	24	236727	648	27	688	1.060	122	18.8	4.519
DAL	DALLAS LOVE FIELD	L	24	225448	619	26	836	1.353	154	24.9	5.923
BAL	BALTIMORE WASHINGTON	M	24	210868	578	24	830	1.436	79	13.7	3.292
OAK	OAKLAND INTERNATIONAL	L	24	202566	555	23	831	1.497	136	24.5	5.913
SLC	SALT LAKE CITY INTL	M	24	199342	546	23	799	1.463	74	13.6	3.217
CLE	CLEVELAND HOPKINS I	L	24	198538	544	23	750	1.379	55	10.1	2.391
IND	INDIANAPOLIS WEIR C	M	24	197301	541	23	757	1.399	77	14.2	3.348
IAH	HOUSTON INTERCONTIN	L	24	196542	538	22	704	1.309	61	11.3	2.773
CLT	CHARLOTTE DOUGLAS	M	24	195140	535	22	716	1.330	79	14.8	3.591
BUR	BURBANK	L	24	194345	532	22	775	1.457	74	13.9	3.364
SJU	SAN JUAN INTERNATIONAL	L	24	192408	527	22	733	1.391	70	13.3	3.182



TABLE 2 - ITINERANT AIRCRAFT OPERATION AT AIR COMMERCE AIRPORT, FY 1976

LOCAL IDENT	LOCATION	HUB	DAILY HOURS OF UPNS	ANNUAL	AIRCRAFT AVERAGE DAY	OPERATIONS AVERAGE HOUR	PEAK DAY	RATIO OF PEAK/AVG DAY	BUSY HOUR OPNS	BUSY HOUR C/U OF AVG DAY	RATIO OF BUSY/AVG HOUR
EMR	NEWARK	L	24	189775	520	22	664	1.277	49	9.4	2.227
CNH	COLUMBUS INTERNATIONAL	M	24	186018	510	21	772	1.514	54	10.6	2.571
BNA	NASHVILLE METROPOLI	M	24	185906	509	21	769	1.511	64	12.0	3.048
TPA	TAMPA INTERNATIONAL	L	24	185758	509	21	671	1.316	55	10.8	2.619
ABQ	ALBUQUERQUE INTERNA	M	24	185247	508	21	669	1.317	93	18.3	4.429
ICT	MICHITA MID CONTINE	S	24	178237	488	20	738	1.512	102	20.9	5.100
SAT	SAN ANTONIO INTERNA	M	24	175609	481	20	686	1.423	68	14.1	3.400
MKE	MILWAUKEE MITCHELL	M	24	174433	473	20	718	1.502	58	12.1	2.900
MCI	KANSAS CITY INTERNA	L	24	172641	473	20	600	1.268	70	14.8	3.500
FAT	FRESNO AIR TERMINAL	S	24	170235	467	19	678	1.452	76	16.3	4.000
TUL	TULSA INTERNATIONAL	M	24	170105	466	19	821	1.762	106	22.7	5.579
PDX	PORTLAND INTERNATIONAL	M	24	164364	450	19	640	1.422	66	14.7	3.474
SEA	SEATTLE TACOMA INTL	L	24	164089	450	19	549	1.220	49	10.7	2.526
PBI	WEST PALM BEACH	M	24	162166	444	19	563	2.165	97	21.8	5.105
MDW	CHICAGO MIDWAY	L	24	161513	443	18	851	1.921	90	20.3	5.000
SAN	SAN DIEGO LINDBERG	M	24	160588	440	18	610	1.386	55	12.5	3.056
DAB	DAYTONA BEACH	S	24	158753	435	18	806	1.833	91	20.9	5.056
DSM	DES MOINES MUNICIPA	S	24	154347	423	18	654	1.541	66	13.6	3.667
ANC	ANCHORAGE INTL RAPC	M	24	153864	422	18	345	0.827	61	14.5	3.389
ISP	ISLIP MACARTHUR	S	24	153563	421	18	1177	2.756	157	37.3	8.722
54	VOLUMES 150000 AND OVER		1288	13291872	36418	1536	48255	1.326	4857	13.3	3.162

TABLE 2 - ITINERANT AIRCRAFT OPERATION AT AIR COMMERCE AIRPORT, FY 1976

LOCAL IDENT	LOCATION	HUB	DAILY HOURS OF OPNS	ANNUAL	AIRCRAFT AVERAGE DAY	OPERATIONS AVERAGE HOUR	PEAK DAY	RATIO OF PEAK/AVG DAY	BUSY HOUR OPNS	BUSY HOUR 0/0 OF AVG DAY	RATIO OF BUSY/AVG HOUR
BHM	BIRMINGHAM	M	24	144026	395	16	579	1.466	65	16.5	4.063
HPN	WHITE PLAINS WESTCH	N	24	143570	393	16	719	1.830	62	15.8	3.875
BOI	BOISE	S	24	140189	384	16	688	1.792	92	24.0	5.750
RDU	RALEIGH DURHAM	M	24	139569	382	16	587	1.537	72	18.8	4.500
TUS	TUCSON	M	24	137145	376	16	709	1.886	8	2.1	0.500
MSY	NEW ORLEANS MOISANT	L	24	136324	373	16	444	1.190	47	12.6	2.938
BDL	WINDSOR LOCKS	M	24	135634	372	16	712	1.914	52	14.0	3.250
IAD	WASHINGTON DULLES I	L	24	133947	367	15	499	1.360	83	22.6	5.533
BUF	BUFFALO INTERNATIONAL	M	24	130158	357	15	482	1.350	49	13.7	3.267
DAY	DAYTON	M	24	129448	355	15	1116	3.144	40	11.3	2.667
LIT	LITTLE ROCK ADAMS F	S	24	127326	349	15	634	1.817	52	14.9	3.467
ONT	ONTARIO	S	24	126128	346	14	565	1.633	63	18.2	4.500
CVG	CINCINNATI GREATER	M	24	125723	344	14	447	1.299	45	13.1	3.214
RIC	RICHMOND BYRD INTL	S	24	122735	336	14	545	1.622	48	14.3	3.429
BFL	BAKERSFIELD MEADOWS	N	18	122084	334	19	516	1.545	88	26.3	4.632
LFT	LAFAYETTE	N	24	120732	331	14	533	1.610	68	20.5	4.857
PVD	PROVIDENCE	S	24	119935	329	14	621	1.888	71	21.6	5.071
OKC	OKLAHOMA CITY WILL	M	24	119502	327	14	475	1.453	65	19.9	4.643
OMA	OMAHA	M	24	119293	327	14	486	1.486	60	20.0	4.643
RNO	RENO INTERNATIONAL	M	24	118627	325	14	499	1.535	65	20.0	4.643
OXR	OXNARD VENTURA COUN	N	16	118437	324	20	558	1.722	116	35.8	5.800
ELP	EL PASO INTERNATIONAL	M	24	117812	323	13	432	1.337	54	16.7	4.154
AUS	AUSTIN	S	24	117563	322	13	521	1.618	68	21.1	5.231
GSO	GREENSBORO REGIONAL	M	24	115636	317	13	641	2.022	46	14.5	3.538
SBA	SANTA BARBARA	S	16	114946	315	20	541	1.717	89	28.3	4.450
DET	DETROIT CITY	L	24	114713	314	13	638	2.032	89	28.3	6.846
ROC	ROCHESTER MONROE CO	M	24	114191	313	13	509	1.626	83	26.5	6.385
ORF	NORFOLK REGIONAL	M	24	112598	308	13	468	1.519	48	15.6	3.692
SYR	SYRACUSE HAMCOCK IN	M	24	111044	304	13	534	1.751	52	17.1	4.000
FAI	FAIRBANKS	S	24	106622	292	12	520	1.781	54	18.5	4.500
LNK	LINCOLN MUNICIPAL	S	24	106399	292	12	500	1.712	83	28.4	6.017
SDF	LOUISVILLE STANDIFO	M	24	106340	291	12	543	1.866	50	17.2	4.167
MSN	MADISON	S	24	106296	291	12	523	1.797	48	16.5	4.000
TYS	KNOXVILLE MCGHEE TY	S	24	105738	290	12	458	1.579	54	18.6	4.500



TABLE 2 - ITINERANT AIRCRAFT OPERATION AT AIR COMMERCE AIRPORT, FY 1976

LOCAL IDENT	LOCATION	HUB	DAILY HOURS OF OPNS	ANNUAL	AIRCRAFT OPERATIONS - - - - AVERAGE DAY	PEAK DAY	RATIO OF PEAK/AVG DAY	BUSY HOUR OPNS	BUSY HOUR O/O OF AVG DAY	RATIO OF BUSY/AVG HOUR
GRR	GRAND RAPIDS	S	24	105268	288	497	1.726	55	19.1	4.583
COS	COLORADO SPRINGS	S	24	104466	286	775	2.710	34	11.9	2.833
LAN	LANSING	S	24	102032	280	1835	6.554	383	136.8	31.917
CHS	CHARLESTON AFB MUNI	S	24	100341	275	409	1.487	53	19.3	4.818
38	VOLUMES 100000 - 149999		890	4572537	12527	22758	1.817	2654	21.2	4.906

TABLE 2 - ITINERANT AIRCRAFT OPERATION AT AIR COMMERCE AIRPORT, FY 1975

LOCAL IDENT	LOCATION	HUB	DAILY HOURS OF OPNS	ANNUAL	AIRCRAFT OPERATIONS - AVERAGE DAY	PEAK LAY	RATIO OF PEAK/AVG DAY	BUSY HOURS UPNS	BUSY HOUR U/O OF AVG DAY	RATIO OF BUSY/AVG HOUR
ALB	ALBANY COUNTY	M	24	99410	272	428	1.574	52	15.1	4.727
CRN	CHARLESTON	S	24	97085	266	619	2.327	56	21.6	5.273
JAX	JACKSONVILLE INTL	M	24	96453	264	369	1.398	48	16.2	4.364
RFD	ROCKFORD	N	24	96353	264	574	2.174	37	14.0	3.364
SPI	SPRINGFIELD CAPITAL	N	24	93542	256	459	1.793	60	23.4	5.455
SRQ	SARASOTA BRADENTON	S	13	91322	250	394	1.576	53	21.2	3.786
MLB	MELBOURNE	S	18	90628	248	457	2.004	36	14.5	2.571
CAK	AKRON CANTON REGION	S	24	90496	248	456	1.839	75	30.2	7.500
LEX	LEXINGTON	S	24	89602	245	526	2.147	76	31.8	7.600
TEN	TRENTON	N	24	89446	245	502	2.049	68	27.3	6.800
MMU	MORRISTOWN	L	16	88300	242	474	1.959	47	19.4	3.133
CHA	CHATTANOOGA	S	24	87609	240	362	1.508	59	24.6	5.900
ABE	ALBENTON	S	24	86414	237	415	1.731	74	31.2	7.400
ILG	WILMINGTON GR WILM	N	24	86254	236	538	2.280	26	11.0	2.600
GEG	SPOKANE INTERNATIONAL	M	24	85983	236	360	1.525	37	15.7	3.700
STT	ST THOMAS H S TRUMA	S	16	84980	233	469	2.013	42	18.0	2.800
PIA	PEORIA	S	24	84964	233	422	1.811	68	29.2	6.800
CAE	COLUMBIA METROPOLIT	S	24	84627	232	350	1.505	44	19.0	4.400
BTR	BATON ROUGE RYAN FI	S	24	83869	230	479	2.033	46	20.0	4.600
LBB	LUBBOCK	S	24	83788	230	382	1.661	41	17.8	4.100
TOL	TOLEDO EXPRESS	S	24	83366	228	408	1.789	53	23.2	5.300
TOP	TOPEKA PHILIP BALLA	N	24	83280	228	681	2.987	65	28.5	6.500
MCO	ORLANDO JETPORT	M	24	82780	227	331	1.458	24	10.6	2.667
MAF	MIDLAND	S	24	82339	226	346	1.531	33	14.6	3.667
SCK	STOCKTON	N	24	82158	225	360	1.600	44	19.6	4.889
MFR	MEDFORD JACKSON COU	S	24	82138	225	713	3.169	90	40.0	10.000
FWA	FURT WAYNE	S	24	81987	225	337	1.493	50	22.2	5.556
ROA	ROANOKE	S	24	81143	222	468	2.108	83	37.4	9.222
MLI	MOLINE	S	24	79660	218	410	1.891	133	61.0	14.278
MRY	MONTEREY	S	24	78580	215	416	1.935	45	20.9	5.000
BIL	BILLINGS	S	24	77910	213	367	1.723	52	24.4	5.278
EUG	EUGENE	S	24	77065	211	406	1.924	42	19.9	4.667
AZO	KALAMAZOO	S	24	76642	210	429	2.043	50	23.8	5.656
MOD	MODESTO CITY COUNTY	N	18	75494	207	342	1.652	54	26.1	4.500

TABLE 2 - ITINERANT AIRCRAFT OPERATION AT AIR COMMERCE AIRPORT, FY 1976

LOCAL IDENT	LOCATION	HUB	DAILY HOURS OF OPNS	ANNUAL	AIRCRAFT OPERATIONS AVERAGE DAY	PEAK DAY	RATIO OF PEAK/AVG DAY	BUSY HOUR OPNS	BUSY HOUR O/O OF AVG DAY	RATIO OF BUSY/AVG HOUR
CRP	CORPUS CHRISTI	S	24	75006	205	346	1.688	42	20.5	4.667
HYA	HYANNIS	N	17	74252	203	596	2.936	70	34.5	5.833
FNT	FLINT BISHOP	S	24	73756	202	863	3.975	103	51.0	12.875
HVN	NEW HAVEN	N	18	73639	202	481	2.381	59	29.2	5.364
PHF	NEWPORT NEWS	S	24	73298	201	360	1.791	66	32.8	8.250
CMT	CHAMPAIGN UNIV OF I	N	24	72978	200	362	1.810	49	24.5	6.125
FSD	SIOUX FALLS FOSS FL	S	24	72834	200	355	1.775	13	6.5	1.625
TLH	TALLAHASSEE	S	24	72406	198	305	1.540	51	25.8	6.375
EVV	EVANSVILLE	S	24	72061	197	314	1.594	44	22.3	5.500
SMP	SACRAMENTO METRO	S	24	71917	197	255	1.437	47	23.9	5.875
PSP	PALM SPRINGS MUNICI	S	16	71319	195	525	2.713	110	56.4	9.167
MHT	MANCHESTER	N	17	71262	195	447	2.292	66	33.8	6.000
OGG	KAHULUI	M	16	71159	195	259	1.328	42	21.5	3.500
PWM	PORTLAND	S	16	70848	194	441	2.273	60	30.9	5.000
FMY	FORT MYERS PAGE FIE	S	16	70598	193	343	1.777	59	30.6	4.917
MGM	MONTGOMERY DANNELLY	S	24	70079	192	327	1.705	36	18.8	4.500
TRI	BRISTOL TRI CITY	S	24	69307	190	283	1.489	51	26.8	6.375
SBN	SOUTH BEND	S	24	68960	189	590	3.122	87	46.0	10.875
MLU	MUNRGE	N	24	68824	189	278	1.471	45	25.9	6.125
SAV	SAVANNAH MUNICIPAL	S	24	68726	188	170	0.904	29	15.4	3.625
MOB	MOBILE BATES FIELO	S	24	68671	188	313	1.665	40	21.3	5.000
YKM	YAKIMA AIR TERMINAL	N	17	67350	185	353	1.908	37	20.0	3.364
DSH	OSHKOSH WITTMAN FIE	N	16	67314	184	185	1.005	96	52.2	8.000
CID	CEDAR RAPIDS	S	24	67111	184	302	1.641	96	52.2	8.000
BTV	BURLINGTON INTERNAT	N	24	66230	181	334	1.845	40	22.1	5.000
SUX	SIOUX CITY MUNICIPA	S	24	65371	179	288	1.605	46	25.7	6.571
FAR	FARGO FECTOR FIELO	S	24	62678	172	324	1.884	32	16.6	4.571
BPT	BEAUMONT PORT ARTHU	S	24	62317	171	323	1.885	57	33.3	8.143
JAN	JACKSON MUN ARPT	S	24	61354	168	266	1.563	30	17.9	4.286
HSV	HUNTSVILLE MADISON	S	24	61263	168	333	1.962	36	21.4	5.143
64	VOLUMES		1435	4998555	13692	25994	1.898	3479	25.4	5.584



TABLE 2 - ITINERANT AIRCRAFT OPERATION AT AIR COMMERCE AIRPORT, FY 1976

LOCAL IDENT	LOCATION	HUB	DAILY HOURS OF OPNS	ANNUAL	AIRCRAFT OPERATIONS AVERAGE DAY	PEAK DAY	RATIO OF PEAK/AVG DAY	BUSY HOUR OPNS	BUSY HOUR O/U OF AVG DAY	RATIO OF BUSY/AVG HOUR
INT	WINSTON SALEM	M	16	59728	164	353	2.152	40	24.4	4.000
GRB	GREEN BAY AUSTIN ST	S	24	58264	160	289	1.806	40	25.0	5.714
DHN	DUTHAN	S	16	58250	160	344	2.150	75	46.9	7.500
SGF	SPRINGFIELD	S	24	57703	158	250	1.582	71	44.9	10.143
SMX	SANTA MARIA PUBLIC	N	12	57664	158	326	2.063	51	32.3	3.923
SLE	SALEM McNARY FIELD	N	16	57549	158	596	3.785	97	61.4	9.700
IAG	NIAGARA FALLS	M	24	57327	157	550	3.503	85	54.1	12.143
RST	ROCHESTER	S	24	57278	157	383	2.439	47	29.9	6.714
FSM	FORT SMITH MUNICIPAL	N	24	57166	157	363	2.312	40	25.5	5.714
AVP	WILKES BARRE	S	24	57014	156	304	1.945	41	26.3	5.857
ALO	WATERLOO	S	18	56285	154	265	1.721	36	23.4	4.600
GGG	LONGVIEW	N	24	56115	154	240	1.558	37	24.0	6.167
BGR	BANGOR INTERNATIONAL	S	24	55991	153	330	2.157	52	34.0	8.667
BIS	BISMARCK	N	24	55871	153	275	1.797	52	34.0	8.667
EWB	NEW BEDFORD	N	16	55604	152	359	2.362	52	34.2	5.200
CSG	COLUMBUS	S	24	55598	152	229	1.507	40	26.3	6.667
GNV	GAINESVILLE	N	16	55561	152	386	2.539	73	48.0	7.500
ORH	WORCESTER	N	24	55518	152	410	2.697	48	31.6	8.000
GPT	GULFPORT	N	17	55379	152	321	2.112	49	32.2	5.444
PSC	PASCO TRI CITIES	N	16	55375	152	287	1.888	41	27.0	4.100
AMA	AMARILLO	S	24	54954	151	234	1.550	24	15.9	4.000
GTF	GREAT FALLS	S	24	54263	149	257	1.725	62	41.6	10.333
JAN	JACKSON REYNOLDS MU	N	16	53821	147	456	3.102	65	44.2	7.222
SHV	SHREVEPORT	S	24	53667	147	203	1.381	45	30.6	7.500
PFN	PANAMA CITY BAY COU	N	17	53607	147	249	1.633	36	24.5	4.000
FNN	FARRINGTON	N	24	52812	145	229	1.579	55	37.9	9.167
SLN	SALINA	N	16	52775	145	402	2.772	63	43.4	7.000
SJT	SAN ANGELO	N	24	52532	144	487	3.382	43	29.9	7.167
BGN	BINGHAMTON BROOME C	N	24	52447	144	260	1.806	46	31.9	7.667
AGS	AUGUSTA	S	24	52374	143	317	2.217	40	28.0	6.667
PNS	PENSACOLA	S	24	52273	143	300	2.056	42	29.4	7.000
ACT	WACO MUNICIPAL	N	24	52016	143	300	2.098	29	20.3	4.833
MBS	SAGINAW TRI CITY	S	24	51958	142	598	4.211	69	48.6	11.500
YNG	YOUNGSTOWN	S	24	51780	142	340	2.394	90	63.4	15.000





TABLE 2 - ITINERANT AIRCRAFT OPERATION AT AIR COMMERCE AIRPORT, FY 1976

LOCAL IDENT	LOCATION	HUB	DAILY HOURS OF OPNS	ANNUAL	AIRCRAFT OPERATIONS - - -	PEAK DAY	RATIO OF PEAK/AVG DAY	BUSY HOUR UPNS	BUSY HOUR % OF AVG DAY	RATIO OF BUSY/AVG HOUR
BMI	BLOOMINGTON NORMAL	N	12	44013	10	258	2.463	37	30.0	3.700
RDD	REDDING	N	13	43803	9	318	2.650	34	28.3	3.778
MSO	MISSOULA	N	10	43562	7	218	1.832	61	51.5	8.714
TKX	TEXARKANA	N	24	43355	5	280	2.403	34	28.6	6.800
MGW	MORGANTOWN	N	16	43173	7	350	2.966	50	42.4	7.143
CKB	CLARKSBURG BENEDEUM	N	16	43105	7	376	2.908	25	21.2	3.571
HOT	HOT SPRINGS MEMORIA	N	16	41882	7	376	2.852	87	75.7	12.429
LMT	KLAMATH FALLS	N	24	41806	5	273	2.374	55	51.3	11.800
IDA	IDAHO FALLS FANNING	N	16	41623	114	778	6.825	136	119.3	19.429
IPL	IMPERIAL	N	14	41531	8	276	2.421	23	20.2	2.875
PDT	PENDLETON	N	16	41152	7	668	5.912	98	85.7	14.000
TCL	TUSCALOOSA VAN DE G	M	14	40617	8	228	2.054	36	32.4	4.500
TVL	SOUTH LAKE TAHOE	N	15	40306	7	256	2.891	49	44.5	7.000
TVC	TRAVERSE CITY	N	12	40267	9	269	2.445	23	20.9	2.556
JNU	JUNEAU	S	16	39874	7	270	2.477	21	19.3	3.000
MCE	MERCED	S	8	39122	13	281	2.626	52	48.6	4.000
ACY	ATLANTIC CITY	N	24	39101	4	258	2.411	43	40.2	10.750
UCA	UTICA	N	24	38973	4	231	2.159	32	29.9	8.000
DBQ	DUBUQUE	M	24	38731	7	213	2.009	34	32.1	4.857
PIH	HILO GENERAL LYMAN	N	16	37239	6	193	1.852	40	39.2	6.667
BRO	BROWNSVILLE INTERNA	N	24	37202	4	203	1.990	60	60.0	8.000
CHO	CHARLOTTEVILLE ALB	N	16	36611	6	165	1.850	82	82.0	11.000
CRE	MYRTLE BEACH	N	10	36392	10	388	3.880	82	82.0	8.260
HLG	WHEELING	N	24	36232	4	360	3.636	75	75.8	18.750
ROW	ROSWELL	N	16	36072	6	149	1.505	25	25.3	4.167
MCN	MACON LEWIS B WILSO	N	24	35969	4	170	1.717	24	24.2	6.000
TWF	TWIN FALLS	N	12	35081	8	247	2.573	20	20.8	2.500
JLN	JOPLIN	N	16	34850	6	846	8.813	350	370.8	59.333
MDG	ENID WOODRING MUNIC	N	14	34850	95	285	3.042	43	42.3	6.143
KOA	KONA KE AHOLE	S	16	34828	6	168	1.768	35	36.8	5.833
AHN	ATHENS CLARKE COUNT	N	15	34797	6	274	2.884	58	61.1	9.667
LCH	LAKE CHARLES	N	16	34748	6	57	1.021	19	20.0	3.167
MEI	MERIDIAN KEY	N	16	34365	6	585	6.223	63	67.0	10.500

TABLE 2 - ITINERANT AIRCRAFT OPERATION AT AIR COMMERCE AIRPORT, FY 1976

LOCAL IDENT	LOCATION	FUB	DAILY HOURS OF OPNS	ANNUAL	AIRCRAFT OPERATIONS AVERAGE DAY	PEAK DAY	RATIO OF PEAK/AVG DAY	BUSY HOUR OPNS	BUSY HOUR % OF AVG DAY	RATIO OF BUSY/AVG HOUR
CGI	CAPE GIRARDEAU MUNI	N	16	33922	93	240	2.656	63	67.7	10.500
BMG	BLOOMINGTON MONROE	N	12	33653	92	452	4.913	32	34.8	4.800
ASE	ASPEN PITKIN COUNTY	N	16	32866	90	271	3.253	53	58.9	8.833
HLN	HARLINGEN INDUSTRIA	N	16	32839	90	133	1.478	22	24.4	3.667
HLN	HELENA	N	24	32065	88	217	2.468	45	51.1	11.250
COU	COLUMBIA REGIONAL	N	16	31714	87	362	4.161	72	86.2	15.800
GLH	GREENVILLE MUNICIPAL	N	15	31498	86	221	2.570	35	40.7	5.833
HKY	HICKORY	N	15	31015	85	148	1.741	29	34.1	4.833
ESF	ALEXANDRIA	N	14	30202	83	137	1.621	32	38.8	5.333
ITH	ITHACA TOMPKINS CO	N	12	30163	83	268	3.256	44	53.0	8.286
112	VOLUMES 30000 - 59999		2100	5161625	14142	34626	2.448	5837	41.8	7.379

TABLE 2 - ITINERANT AIRCRAFT OPERATION AT AIR COMMERCE AIRPORT, FY 1976

LOCAL IDENT	LOCATION	HUB	DAILY HOURS OF UPNS	ANNUAL	AIRCRAFT OPERATIONS AVERAGE DAY	AVERAGE HOUR	PEAK DAY	RATIO OF PEAK/AVG DAY	BUSY HOUR UPNS	BUSY HOUR Q/U OF AVG DAY	RATIO OF BUSY/AVG HOUR
FVY	FAYETTEVILLE DRAKE	N	16	29714	81	5	320	3.951	43	53.1	8.600
PBF	PINE BLUFF GRIDER F	N	16	29525	81	5	352	4.346	46	56.8	9.200
LEB	LEBANON	N	16	29465	81	5	108	1.333	18	22.2	3.600
PSE	PONCE MERCEDITA	N	16	28755	79	5	302	3.823	47	59.5	9.400
GBG	GALESBURG MUNICIPAL	N	11	28563	78	7	553	12.346	150	192.3	21.429
LAM	LAWTON MUNICIPAL	N	16	28495	78	5	45	0.577	18	23.1	3.600
PAH	PADUCAH BARKLEY FIE	N	15	27612	76	5	121	1.592	22	28.9	4.400
BEH	BENTON HARBOR ROSS	N	14	26881	74	5	180	2.432	27	36.5	5.400
GCN	GRAND CANYON MUNICI	N	12	25931	71	6	245	3.451	53	74.6	8.833
AKN	KING SALMON	N	12	25751	71	6	190	2.676	36	50.7	6.000
HOB	HOBBS LEA COUNTY	N	24	23800	65	3	133	2.046	17	26.2	5.667
VLD	VALDOSTA MUNICIPAL	N	16	22483	62	4	570	9.194	141	227.4	35.250
EWN	NEW BERN	N	15	21198	58	4	109	1.879	25	43.1	6.250
ISO	KINSTON	N	8	19980	55	7	129	2.345	24	43.6	3.429
KWA	KWAJALEIN AAF	N	16	18559	51	3	87	1.706	20	39.2	6.667
VDZ	VALDEZ	N	10	17209	47	5	123	2.617	26	52.3	5.200
LWB	LEWISBURG GREENBRIE	N	8	15560	43	5	368	8.558	28	65.1	5.600
SCC	DEADHORSE	N	16	14048	38	2	102	2.684	11	28.9	5.500
ADQ	KODIAK	N	16	7753	21	1	57	2.714	8	38.1	8.000
19	VOLUMES LESS THAN 30000		273	441322	1210	88	4504	3.722	760	62.8	8.630
287			5986	28465911	77989	3579	136171	1.746	17587	22.6	4.914



TABLE 3 - TOTAL AIRCRAFT OPERATION AT AIR COMMERCE AIRPORT, FY 1976

LOCAL IDENT	LOCATION	HUB	DAILY HOURS OF OPNS	ANNUAL	AIRCRAFT OPERATIONS - - - - - AVERAGE DAY	PEAK DAY	RATIO OF PEAK/AVG DAY	BUSY HOUR OPNS	BUSY HOUR % OF AVG DAY	RATIO OF BUSY/AVG HOUR
ORD	CHICAGO OHARE INTL	L	24	692109	1896	2257	1.190	171	9.0	2.165
SNA	SANTA ANA	L	16	627441	1719	2770	1.611	352	20.5	3.290
LGB	LONG BEACH	L	24	553113	1515	2478	1.636	280	18.5	4.444
ATL	ATLANTA INTERNATIONAL	L	24	473876	1298	1490	1.148	117	9.0	2.167
LAX	LOS ANGELES INTERNA	L	24	467479	1281	1519	1.186	108	8.4	2.038
SJC	SAN JOSE MUNICIPAL	S	24	453431	1242	1710	1.377	205	16.5	3.942
PHX	PHOENIX SKY HARBOR	L	24	425773	1167	1642	1.407	192	16.5	3.918
DEN	DENVER STAPLETON IN	L	24	400424	1097	1399	1.275	123	11.2	2.674
JAK	OAKLAND INTERNATIONAL	L	24	368868	1011	1569	1.552	205	20.3	4.881
DFW	DALLAS FT WORTH REG	L	24	351426	963	1104	1.146	89	9.2	2.225
SFO	SAN FRANCISCO	L	24	337750	925	1120	1.211	87	9.4	2.231
JFK	JOHN F KENNEDY INTL	L	24	335636	920	1170	1.272	110	12.0	2.895
LGA	LA GUARDIA	L	24	335379	919	1182	1.286	100	10.9	2.632
ISP	ISLIP MACARTHUR	S	24	323101	885	2070	2.335	288	32.5	7.784
HNL	HONOLULU	L	24	318187	872	1226	1.406	108	12.4	3.000
STL	ST LOUIS INTERNATIONAL	L	24	314583	862	1150	1.334	93	11.4	2.722
FLL	FORT LAUDERDALE	L	24	314494	862	1263	1.465	142	16.5	3.944
DCA	WASHINGTON NATIONAL	L	24	312875	857	1160	1.354	98	11.4	2.722
DAL	DALLAS LOVE FIELD	L	24	305403	837	1084	1.284	162	19.4	4.629
PHL	PHILADELPHIA INTL	L	24	300967	825	1084	1.314	96	11.6	2.824
BOS	BOSTON LOGAN	L	24	300799	824	1257	1.525	115	14.0	3.482
MEM	MEMPHIS INTERNATIONAL	M	24	297883	816	1156	1.417	130	15.9	3.624
PIT	PITTSBURGH GREATER	L	24	294839	808	1078	1.334	59	12.3	2.912
LAS	LAS VEGAS MCCARRAN	L	24	294143	806	1114	1.382	112	13.9	3.294
MIA	MIAMI INTERNATIONAL	L	24	288382	790	1214	1.537	104	13.2	3.152
MSP	MINNEAPOLIS ST PAUL	L	24	268448	735	972	1.322	88	12.0	2.839
CMH	COLUMBUS INTERNATIONAL	M	24	254809	698	1190	1.705	115	16.5	3.966
BUR	BURBANK	L	24	253000	693	1217	1.756	126	18.2	4.345
29	VOLUMES 250000 AND OVER		664	10264618	28123	35865	1.418	4020	14.3	3.328

TABLE 3 - TOTAL AIRCRAFT OPERATION AT AIR COMMERCE AIRPORT, FY 1976

LOCAL IDENT	LOCATION	HUB	DAILY HOURS OF OPNS	ANNUAL	AVERAGE DAY	AIRCRAFT OPERATIONS - AVERAGE HOUR	PEAK DAY	RATIO LF PEAK/AVG DAY	BUSY HOUR OF DAY	RATIO LF BUSY/AVG HOUR
SLC	SALT LAKE CITY INTL	M	24	249093	682	28	1109	1.626	16.0	3.893
DTM	DETROIT METRO WAYNE	L	24	242647	665	28	505	1.361	10.7	2.536
ICT	WICHITA MID CONTINE	S	24	242507	665	28	1075	1.622	19.2	4.571
ANC	ANCHORAGE INTL RANC	M	24	236144	647	27	1061	1.671	18.2	4.370
DAB	DAYTONA BEACH	S	24	230947	633	26	2335	3.665	36.7	8.923
BJI	BOISE	S	24	229406	629	26	1118	1.777	29.3	7.077
TUS	TUCSON	M	24	229139	628	26	1029	1.639	20.9	5.038
FAT	FRESNO AIR TERMINAL	S	24	228968	627	26	1108	1.707	26.4	4.923
CLE	CLEVELAND HOPKINS I	L	24	228617	626	26	528	1.482	16.1	4.346
BAL	BALTIMORE WASHINGTO	M	24	226476	620	26	888	1.432	14.0	3.346
MMJ	MORRISTOWN	L	16	224701	616	39	1210	1.984	28.1	4.436
LNK	LINCOLN MUNICIPAL	S	24	222921	611	25	1171	1.917	24.9	6.080
ABQ	ALBUQUERQUE INTERNA	M	24	222744	610	25	855	1.467	21.0	5.120
ROC	ROCHESTER MONROE CO	M	24	221363	606	25	1249	2.061	35.5	8.600
MLB	MELBOURNE	S	16	218514	599	33	1597	2.666	17.5	3.182
MKE	MILWAUKEE MITCHELL	M	24	217529	596	25	960	1.611	15.1	3.600
PBI	WEST PALM BEACH	M	24	215496	590	25	1059	1.795	18.6	4.400
OXR	OXNARD VENTURA COUN	N	16	213033	584	37	1046	1.791	25.5	4.027
BNA	NASHVILLE METROPOLI	M	24	212060	581	24	867	1.492	14.3	3.458
IND	INDIANAPOLIS WEIR C	M	24	210871	578	24	878	1.519	14.4	3.458
MSN	MADISON	S	24	210273	576	24	1230	2.135	20.5	4.917
PDX	PORTLAND INTERNATIO	M	24	209772	575	24	845	1.470	18.3	4.542
HPN	WHITE PLAINS WESTCH	N	24	207182	568	24	1249	2.195	19.2	4.542
SAT	SAN ANTONIO INTERNA	M	24	205018	562	23	891	1.585	18.0	4.391
PVD	PROVIDENCE	S	24	203067	556	23	1035	1.862	31.7	7.652
SAN	SAN DIEGO LINDBERG	M	24	202177	554	23	664	1.560	17.9	4.304
CLT	CHARLOTTE DOUGLAS	M	24	201964	553	23	751	1.358	17.0	4.087
IAH	HOUSTON INTERCONTIN	L	24	201174	551	23	704	1.278	12.0	2.870
28	VOLUMES 200000 - 249999		650	6163863	16888	736	30081	1.781	20.5	4.697

TABLE 3 - TOTAL AIRCRAFT OPERATION AT AIR COMMERCE AIRPORT, FY 1976

LOCAL IDENT	LOCATION	HUB	DAILY HOURS OF OPNS	ANNUAL	AIRCRAFT AVERAGE DAY	OPERATIONS AVERAGE HOUR	PEAK DAY	RATIO OF PEAK/AVG DAY	BUSY HOUR UPNS	BUSY HOUR U/O OF AVG DAY	RATIO OF BUSY/AVG HOUR
TUL	TULSA INTERNATIONAL	M	24	197682	542	23	869	1.603	133	24.5	5.783
DSH	DES MOINES MUNICIPAL	S	24	195627	536	22	948	1.769	118	22.0	5.364
SJU	SAN JUAN INTERNATIONAL	L	24	195316	535	22	772	1.443	76	13.1	3.182
PHE	NEWPORT NEWS	S	24	193486	530	22	1012	1.909	146	27.9	6.727
RDU	RALEIGH DURHAM	M	24	193064	529	22	664	1.633	108	20.4	4.909
TPA	TAMPA INTERNATIONAL	L	24	192479	527	22	681	1.292	56	11.0	2.636
FAI	FAIRBANKS	S	24	191474	525	22	1226	2.335	103	19.6	4.682
ENR	NEWARK	L	24	189775	520	22	664	1.277	49	9.4	2.227
ELP	EL PASO INTERNATIONAL	M	24	187886	515	21	880	1.705	117	22.7	5.571
BHM	BIRMINGHAM	M	24	187649	514	21	826	1.607	96	18.7	4.571
DET	DETROIT CITY	L	24	187619	514	21	969	1.750	120	23.3	5.714
GFK	GRAND FORKS INTERNA	N	16	187209	513	32	1075	3.090	132	23.7	4.125
RFD	ROCKFORD	N	24	184292	505	21	1838	3.646	175	34.7	8.333
SBA	SANTA BARBARA	S	16	184155	505	32	545	1.871	123	24.4	3.844
IAD	WASHINGTON DULLES I	L	24	183516	503	21	777	1.545	108	21.5	5.143
TTN	TRENTON	N	24	182250	499	21	1000	2.004	115	23.0	5.476
CMI	CHAMPAIGN UNIV OF I	N	24	180460	494	21	1334	2.700	191	30.7	9.055
MCI	KANSAS CITY INTERNA	L	24	178380	489	20	668	1.366	60	10.4	4.000
LAN	LANSING	S	24	178029	488	20	1667	3.467	368	79.5	19.400
COS	COLORADO SPRINGS	S	24	177045	485	20	1083	2.233	94	18.6	4.560
GRR	GRAND RAPIDS	S	24	174000	477	20	1206	2.528	161	33.8	8.050
MDW	CHICAGO MIDWAY	L	24	173966	477	20	669	1.622	95	19.9	4.750
FNT	FLINT BISHOP	S	24	173067	474	20	1215	2.563	140	31.2	7.400
ILG	WILMINGTON GR WILM	N	24	171479	470	20	1204	2.562	55	11.7	2.750
OMA	OMAHA	M	24	169414	464	19	816	1.755	133	29.7	7.263
AUS	AUSTIN	S	24	168773	462	19	791	1.712	122	26.4	6.421
SEA	SEATTLE TACOMA INTL	L	24	167427	459	19	581	1.266	48	10.5	2.526
RIC	RICHMOND BYRD INTL	S	24	163328	447	19	516	2.045	27	4.8	3.000
DRF	NORFOLK REGIONAL	M	24	161495	442	18	785	1.759	84	19.0	4.667
ONT	ONTARIO	S	24	161089	441	18	707	1.503	114	25.9	6.333
SYR	SYRACUSE HANCOCK IN	M	24	160246	439	18	558	2.162	117	26.7	6.500
RNO	RENO INTERNATIONAL	M	24	159305	436	18	686	1.573	72	16.5	4.000
LFT	LAFAYETTE	N	24	157416	431	18	861	1.858	123	28.5	6.633
GSO	GREENSBORO REGIONAL	M	24	157241	431	18	807	1.812	63	16.0	3.833



TABLE 3 - TOTAL AIRCRAFT OPERATION AT AIR COMMERCE AIRPORT, FY 1976

LOCAL IDENT	LOCATION	HUB	DAILY HOURS OF OPNS	ANNUAL	AIRCRAFT OPERATIONS AVERAGE DAY	AIRCRAFT OPERATIONS AVERAGE HOUR	PEAK LAY	RATIO OF PEAK/AVG DAY	BUSY HOUR UPNS	BUSY HOUR C/O OF AVG DAY	RATIO OF BUSY/AVG HOUR
DAY	DAYTON	M	24	156039	428	18	1455	3.400	67	15.7	3.722
IAG	NIAGARA FALLS	M	24	155593	426	18	1186	2.784	184	43.2	10.222
CAK	AKRON CANTON REGION	S	24	154647	424	18	825	1.946	177	41.7	9.033
PIA	PEORIA	S	24	153944	422	18	972	2.303	134	31.8	7.444
LIT	LITTLE ROCK ADAMS F	S	24	153867	422	18	654	1.645	67	15.9	3.722
CVG	CINCINNATI GREATER	M	24	153114	419	17	649	1.545	71	16.9	4.176
MOD	MODESTO CITY COUNTY	N	18	150225	412	23	654	1.684	108	26.2	4.696
41	VOLUMES 150000 - 199999		962	7143108	19571	842	39055	1.556	4755	24.2	5.621

TABLE 3 - TOTAL AIRCRAFT OPERATION AT AIR COMMERCE AIRPORT, FY 1976

LOCAL IDENT	LOCATION	HUB	DAILY HOURS OF UPNS	ANNUAL	AIRCRAFT OPERATIONS - AVERAGE DAY	PEAK DAY	RATIO OF PEAK/AVG DAY	BUSY HOUR UPNS	BUSY HOUR OF AVG DAY	RATIO OF BUSY/AVG HOUR
SPI	SPRINGFIELD CAPITAL	N	24	146933	403	725	1.799	130	32.3	7.647
TOP	TOPEKA PHILIP BALLA	N	24	146602	402	885	2.201	90	22.4	5.294
BUF	BUFFALO INTERNATIONAL	M	24	146590	402	582	1.448	60	14.9	3.529
OKC	OKLAHOMA CITY WILL	M	24	145457	399	617	1.546	103	25.8	6.059
MSY	NEW ORLEANS MOISANT	L	24	143853	394	468	1.188	48	12.2	3.000
ABE	ALLENTOWN	S	24	142094	389	659	1.694	150	38.6	9.4375
BFL	BAKERSFIELD MEADOWS	N	18	141676	388	640	1.649	113	29.1	5.136
BDL	WINDSOR LOCKS	M	24	138912	381	744	1.953	73	19.2	4.8563
MFR	MEDFORD JACKSON COU	S	24	138784	380	1159	3.050	183	48.2	11.438
AZO	KALAMAZOO	S	24	138627	380	814	2.142	132	34.7	8.250
GEG	SPOKANE INTERNATIONAL	M	24	137572	377	745	1.987	81	21.5	5.063
JVL	JANESVILLE	N	16	136570	374	1067	2.853	222	59.4	9.652
TYS	KNOXVILLE MCGHEE TY	S	24	134791	369	647	1.753	105	28.5	7.000
CRP	CORPUS CHRISTI	S	24	134153	368	699	1.899	90	24.5	6.000
SRQ	SARASOTA BRADENTON	S	18	133853	367	557	1.518	96	26.2	4.800
EUG	EUGENE	S	24	133726	366	672	1.836	80	21.9	5.333
BTR	BATON ROUGE RYAN FI	S	24	132513	363	818	2.253	96	26.4	6.400
OSH	USHKOSH WITTMAN FIE	N	16	131909	361	431	1.194	106	29.4	4.609
SCK	STOCKTON	N	24	131316	360	636	1.767	78	21.7	5.200
MAF	MIDLAND	S	24	131045	359	632	1.760	75	20.9	5.000
LBB	LUBBOCK	S	24	128695	353	666	1.887	96	27.6	6.533
CHA	CHATTANOOGA	S	24	127762	350	774	2.211	82	23.4	5.467
TOL	TOLEDO EXPRESS	S	24	127744	350	715	2.054	53	26.6	6.240
JAX	JACKSONVILLE INTL	M	24	126888	347	655	2.003	96	27.7	6.857
CHS	CHARLESTON AFB MUNI	S	24	125151	343	547	1.595	68	19.8	4.857
PUB	PUEBLO	N	24	124851	342	1049	3.067	117	34.2	8.357
CRW	CHARLESTON	S	24	124061	340	657	2.050	63	18.5	4.500
HVN	NEW HAVEN	N	18	123122	337	777	2.306	112	33.2	5.895
CAE	COLUMBIA METROPOLIT	S	24	121367	333	564	1.694	76	22.8	5.429
YKM	YAKIMA AIR TERMINAL	N	17	120608	330	625	1.906	65	19.7	3.421
SMF	SACRAMENTO METRO	S	24	120593	330	552	1.754	85	25.8	6.071
MLI	MOLINE	S	24	120508	330	714	2.164	133	41.8	9.857
FWA	FORT WAYNE	S	24	119776	328	615	1.887	89	27.1	6.357
ROA	ROANOKE	S	24	119770	328	630	1.821	113	34.5	8.071

TABLE 3 - TOTAL AIRCRAFT OPERATION AT AIR COMMERCE AIRPORT, FY 1970

LOCAL IDENT	LOCATION	HUB	DAILY HOURS OF UPNS	ANNUAL	AIRCRAFT AVERAGE DAY	OPERATIONS AVERAGE HOUR	PEAK DAY	RATIO LF PLAKZ/AVG DAY	BUSY HOUR UPNS	BUSY HOURS U/O OF AVG DAY	RATIO OF BUSY/AVG HOUR
LEX	LEXINGTON	S	24	118560	325	14	606	1.865	88	27.1	6.286
ALB	ALBANY COUNTY	M	24	117939	323	13	598	1.851	80	18.5	4.615
CID	CEDAR RAPIDS	S	24	117869	323	13	640	1.881	100	31.0	7.692
PFN	PANAMA CITY BAY COU	N	17	117581	322	19	622	1.922	108	33.5	5.684
ABY	ALBANY	N	16	117368	322	20	757	2.351	100	31.1	5.000
SBN	SOUTH BEND	S	24	116265	319	13	1266	3.959	98	30.7	7.538
SDF	LOUISVILLE STANDIFD	M	24	115631	317	13	578	1.825	58	17.7	4.308
BIL	BILLINGS	S	24	115414	316	13	575	1.820	71	22.5	5.462
SLE	SALEM McNARY FIELD	N	16	115096	315	20	614	1.949	136	43.2	8.800
MOB	MOBILE BATES FIELD	S	24	113645	311	13	604	1.942	82	26.4	6.308
MRY	MONTEREY	S	24	113492	311	13	610	1.961	74	23.0	5.692
PWM	PURTLAND	S	16	113410	311	19	665	2.151	106	34.1	5.579
TLH	TALLAHASSEE	S	24	112773	309	13	531	1.718	73	23.6	5.615
PNS	PENSACOLA	S	24	111047	304	13	634	2.026	104	34.2	8.000
FSD	SIOUX FALLS FOSS FL	S	24	110239	302	13	548	1.815	34	11.3	2.615
MHT	MANCHESTER	N	17	110195	302	18	741	2.454	104	34.4	5.776
GTF	GREAT FALLS	S	24	108792	298	12	653	2.191	109	36.6	9.083
GGG	LONGVIEW	N	24	107107	293	12	629	2.147	58	32.8	8.000
BPT	BEAUMONT PORT ARTHU	N	24	106065	291	12	535	1.852	85	30.9	7.417
BTV	BURLINGTON INTERNAT	N	24	105527	289	12	576	1.893	114	39.4	9.500
RST	ROCHESTER	N	24	104576	287	12	677	2.359	137	47.7	11.417
ACY	ATLANTIC CITY	N	24	103293	283	12	798	2.820	146	52.5	12.333
HSV	HUNTSVILLE MADISON	S	24	102760	282	12	632	2.241	90	31.9	7.500
FMY	FORT MYERS PAGE FIE	S	16	102432	281	18	536	1.915	79	28.1	4.385
FAR	FARGO HECTOR FIELD	S	24	102391	281	12	703	2.502	160	50.5	13.333
ALO	WATERLOO	S	13	101221	277	15	602	2.173	113	40.8	7.533
MLU	MONROE	N	24	101110	277	12	521	1.881	124	44.5	10.333
SLN	SALINA	N	16	100792	276	17	702	2.543	50	34.8	5.647
62	VOLUMES 100000 - 149999		1387	7580102	20770	949	42036	2.024	8155	29.6	6.486



TABLE 3 - TOTAL AIRCRAFT OPERATION AT AIR COMMERCE AIRPORT, FY 1976

LOCAL IDENT	LOCATION	HUB	DAILY HOURS OF OPNS	ANNUAL	AIRCRAFT OPERATIONS - AVERAGE DAY	PEAK DAY	RATIO OF PEAK/AVG DAY	BUSY HOUR - HOUR CPNS	BUSY HOUR - AVG DAY	RATIO OF BUSY/AVG HOUR
HVA	HYANNIS	N	17	99721	273	850	3.114	110	40.3	6.875
ELM	ELMIRA	N	24	98761	271	1395	5.162	84	31.0	7.636
ROW	KOSWELL	N	16	98396	270	755	2.844	80	29.6	4.706
PKB	PARKERSBURG WOOD CG	N	13	97465	267	797	2.985	172	64.4	10.118
SUX	SILOUX CITY MUNICIPAL	S	24	96414	264	490	1.856	92	34.8	8.364
PSP	PALM SPRINGS MUNICI	S	16	95323	261	657	2.511	0	0.0	0.000
TRI	BRISTOL TRI CITY	S	24	95217	261	534	2.046	76	29.1	6.909
MGM	MONTGOMERY DANNELLY	S	24	95199	261	468	1.793	56	21.5	5.091
PSC	PASCO TRI CITIES	N	16	95148	261	505	1.955	88	33.7	5.500
STT	ST THOMAS H S TRUMA	S	16	94670	259	494	1.907	48	18.5	3.000
SAV	SAVANNAH MUNICIPAL	S	24	94516	259	494	1.923	119	45.9	10.818
DHN	DOTHAN	N	16	93835	257	758	2.949	104	63.8	10.250
EWV	EVANSVILLE	S	24	93822	257	480	1.888	70	27.2	6.364
FSH	FORT SMITH MUNICIPAL	N	24	93303	256	452	1.522	81	31.6	7.364
AMA	AMARILLO	S	24	92384	253	487	1.925	45	17.8	4.091
CYS	CHEYENNE	N	24	92253	253	472	1.866	42	16.0	3.818
YNG	YOUNGSTOWN	S	24	92069	252	740	2.927	120	47.6	10.909
MKG	MUSKOGON	N	24	91959	252	572	2.270	60	23.8	5.455
INT	WINSTON SALEM	M	13	90297	247	539	2.182	109	41.7	6.867
BHI	BLOOMINGTON NORMAL	N	12	89629	246	730	2.967	79	32.1	3.762
RAP	RAPID CITY	S	16	89539	245	532	2.171	68	27.5	4.533
GRB	GREEN BAY AUSTIN ST	S	24	89275	245	561	2.250	54	22.0	5.400
ILM	WILMINGTON NEW HANO	N	24	89196	244	488	2.000	83	34.0	8.300
ABI	ABILENE	N	24	88930	244	487	2.000	69	28.3	6.900
EWB	NEW BEDFORD	N	16	88022	241	615	2.552	88	36.5	5.867
MCO	ORLANDO JETPORT	M	24	87552	240	373	1.554	34	14.2	3.460
GNV	GAINESVILLE	N	16	86953	238	485	2.055	73	30.7	4.867
SGF	SPRINGFIELD	S	24	86803	238	451	1.855	71	29.8	7.100
TVC	TRAVERSE CITY	M	12	86534	237	700	2.954	47	15.6	2.350
SJT	JAN ANGELO	N	24	86332	237	777	3.276	95	40.1	9.500
BIS	BISMARCK	N	24	86256	236	453	2.019	78	33.1	7.860
CSG	COLUMBUS	S	24	85203	234	455	1.955	90	38.5	9.000
BGR	BANGOR INTERNATIONAL	S	24	85042	233	602	2.564	93	39.9	9.300
FAY	FAYETTEVILLE GRANVI	S	24	84872	233	544	2.333	91	39.1	9.100

TABLE 3 - TOTAL AIRCRAFT OPERATION AT AIR COMMERCE AIRPORT, FY 1976

LOCAL IDENT	LOCATION	HUB	DAILY HOURS OF OPNS	ANNUAL	AVERAGE DAY	AIRCRAFT OPERATIONS AVERAGE HOUR	PEAK DAY	RATIO OF PEAK/AVG DAY	BUSY HOUR OPNS	BUSY HOUR O/O OF AVG DAY	RATIO OF BUSY/AVG HOUR
IPT	WILLIAMSPT	N	24	84781	232	10	448	1.931	74	31.9	7.400
DEC	DECATUR	N	18	84084	230	13	550	2.391	93	40.4	7.154
MSO	MISSOULA	N	16	83717	229	14	411	1.795	109	47.6	7.4786
GPT	GULFPORT	N	17	83687	229	13	484	2.114	63	36.2	6.385
DLH	DULUTH	S	24	83410	229	10	567	2.476	107	46.7	10.700
LYH	LYNCHBURG	N	16	82949	227	14	466	2.053	94	41.4	6.714
SMX	SANTA MARIA PUBLIC	N	12	82946	227	19	458	2.018	65	28.6	3.421
LSE	LA CROSSE	N	16	82922	227	14	500	2.203	104	45.8	7.429
ERI	ERIE	S	24	82919	227	9	772	3.401	72	31.7	8.000
JXN	JACKSON REYNOLDS MU	N	16	82147	225	14	740	3.285	77	34.2	5.500
MDT	MIDDLETON	S	24	82029	225	9	352	1.564	48	21.3	5.333
AVP	WILKES BARRE	S	24	81658	224	9	457	2.215	70	31.3	7.278
MBS	SAGINAW TRI CITY	S	24	81500	223	9	627	2.812	77	34.5	8.556
OGG	KAHULUI	M	16	80376	220	14	354	1.608	65	29.5	4.643
GRI	GRAND ISLAND	N	16	79838	219	14	472	2.155	90	41.1	6.429
HUT	HUTCHINSON	N	16	79828	219	14	472	2.155	86	39.3	6.143
JAN	JACKSON MUN ARPT	S	24	77648	213	9	450	2.300	53	24.9	5.489
AGS	AUGUSTA	S	24	77146	211	9	400	1.896	57	27.0	6.333
CIC	CHICO	N	13	76444	209	16	378	1.809	79	37.8	4.938
FMN	FARMINGTON	N	24	76251	209	9	361	1.727	61	29.2	6.278
LMS	LEWISTON	N	16	76073	208	13	575	2.764	67	32.2	5.154
BGH	BINGHAMTON BROOME C	N	24	75991	208	9	515	2.495	56	26.9	6.222
CKB	CLARKSBURG BENEDUM	N	16	75953	208	13	730	3.510	79	38.0	6.077
MGM	MORGANTOWN	N	16	75497	207	13	448	2.164	92	44.4	7.077
ORH	MORCESTER	N	24	75045	206	9	572	2.777	60	29.1	6.667
UCA	UTICA	N	24	73994	203	8	561	2.764	78	38.4	9.750
GJT	GRAND JUNCTION	S	16	73441	201	13	517	2.572	99	49.3	7.615
ACT	WACO MUNICIPAL	N	24	72494	199	8	397	1.995	58	29.1	7.250
CPR	CASPER	N	16	71937	197	12	382	1.939	67	34.0	5.583
IDA	IDAHO FALLS FANNING	N	16	71637	196	12	1105	5.638	154	78.6	12.833
MDG	ENID WOODRING MUNIC	N	14	70898	194	14	507	2.613	100	51.5	7.143
STX	ST CROIX ALEX HAMIL	N	14	69160	189	14	330	1.746	67	35.4	4.786
MCE	MERCED	S	8	68256	187	23	521	2.786	133	71.1	5.783
SHV	SHREVEPORT	S	24	66801	183	8	291	1.590	69	37.7	8.625

TABLE 3 - TOTAL AIRCRAFT OPERATION AT AIR COMMERCE AIRPORT, FY 1976

LOCAL IDENT	LOCATION	HUB	DAILY HOURS OF OPNS	ANNUAL	AVERAGE DAY	AIRCRAFT OPERATIONS - - -	PEAK DAY	RATIO OF PEAK/AVG DAY	BUSY HOUR UPNS	BUSY HOUR OF AVG DAY	RATIO CF BUSY/AVG HOUR
LMT	KLAMATH FALLS	N	24	66785	183	8	501	2.728	63	34.4	7.4875
MFE	MCALLEN	N	16	65576	180	11	343	1.906	70	38.9	6.364
HLG	WHEELING	N	24	65439	179	7	522	2.916	77	43.0	11.000
PDD	TYLER	N	13	65164	179	7	372	2.076	64	35.6	9.143
HOT	REDDING	N	13	63524	174	13	346	2.000	52	29.9	4.000
HOT	HOT SPRINGS MEMORIA	N	16	63435	174	11	449	2.560	125	71.8	11.364
GRE	MYRTLE BEACH	N	10	63205	173	17	700	4.046	90	52.0	5.294
TCL	TUSCALOOSA VAN DE G	M	14	63149	173	12	513	2.965	163	54.2	13.583
AHN	ATHENS CLARKE COUNT	N	15	62005	170	11	361	2.241	83	48.8	7.545
BMG	BLOOMINGTON MONROE	N	12	61875	170	14	510	3.000	68	40.0	4.857
TXK	TEXARKANA	N	24	61628	169	7	535	3.166	65	38.5	9.286
BKL	CLEVELAND BURKE LAK	L	16	60620	166	10	446	2.687	62	37.5	6.200
AVL	ASHEVILLE	S	24	59784	164	7	528	3.220	90	54.9	12.857
HTS	HUNTINGTON	N	16	59047	162	10	335	2.063	82	50.6	8.260
HLN	HELENA	N	24	58990	162	7	461	4.846	65	40.1	9.286
PDT	PENDLETON	N	16	58586	161	10	892	1.540	136	84.5	13.600
DBQ	DUBUQUE	N	16	58303	160	10	377	2.356	61	38.1	6.100
JLN	JOPLIN	N	16	57013	156	10	1334	8.551	420	269.2	42.000
PIH	POCATELLO	N	16	56407	155	10	332	2.142	53	34.2	5.300
MCN	MACON LEWIS B WILSO	N	24	56003	153	6	307	2.007	59	38.6	9.833
COU	COLUMBIA REGIONAL	N	16	54714	150	9	405	2.727	75	50.0	8.333
CGI	CAPE GIRARDEAU MUNI	N	16	54512	149	9	429	2.879	75	50.3	8.333
ITH	ITHACA TOMPKINS CO	N	12	54088	148	12	357	2.412	59	39.9	4.917
LTH	LIHUE	M	16	53647	147	9	217	1.476	39	26.5	4.333
LAW	LAWTON MUNICIPAL	N	16	53646	147	9	301	2.048	88	59.9	9.778
TVL	SOUTH LAKE TAHOE	N	15	53411	146	10	478	3.274	79	54.1	7.900
HRL	HARLINGEN INDUSTRIA	N	16	53181	146	9	259	1.774	56	38.4	6.222
JNU	JUNEAU	S	16	53098	145	9	386	2.662	31	21.4	3.444
LCH	LAKE CHARLES	N	16	52660	144	9	237	1.646	42	29.2	4.667
ACK	NANTUCKET MEMORIAL	N	16	52434	144	9	557	3.868	103	71.5	11.644
ITO	HILO GENERAL LYMAN	M	24	51904	142	6	457	3.218	81	57.0	13.500
CHO	CHARLOTTEVILLE ALB	N	16	50465	138	9	448	3.246	83	60.1	9.222
100	VOLUMES		1900	7618575	20874	1154	52283	2.505	8225	39.4	7.127
	50000 - 99999										



TABLE 3 - TOTAL AIRCRAFT OPERATION AT AIR COMMERCE AIRPORT, FY 1976

LOCAL IDENT	LOCATION	HUB	DAILY HOURS OF OPNS	ANNUAL	AVERAGE DAY	AIRCRAFT OPERATIONS - - -	PEAK DAY	RATIO OF PEAK/AVG DAY	BUSY HOUR OPNS	BUSY HOUR D/O OF AVG DAY	RATIO OF BUSY/AVG HOUR
GSP	GREER	S	24	49795	136	6	226	1.662	45	33.1	7.500
KOA	KONA KE AHOLE	S	16	49465	136	9	333	2.449	72	52.9	8.000
IPL	IMPERIAL	N	14	48941	134	10	348	2.597	60	44.8	6.000
MEI	MERIDIAN KEY	N	16	48562	133	8	591	4.444	63	47.4	7.875
TFW	TWIN FALLS	N	12	47819	131	11	425	3.244	63	48.1	5.727
HKY	HICKORY	N	15	47816	131	9	256	1.954	52	39.7	5.778
GBG	GALESBURG MUNICIPAL	N	11	47617	130	12	1451	11.162	220	169.2	18.333
BRD	BROWNSVILLE INTERNA	N	24	47475	130	5	545	4.152	81	62.3	16.200
LEB	LEBANON	N	16	46897	128	8	328	2.563	46	35.9	5.750
BEH	BENTON HARBOR ROSS	N	14	46148	126	9	418	3.317	96	70.2	10.667
GLH	GREENVILLE MUNICIPAL	N	15	44456	122	8	271	2.221	60	49.2	7.500
PBF	PINE BLUFF GRIDER F	N	16	43050	118	7	206	1.746	22	18.6	3.143
ASE	ASPEN PITKIN COUNTY	N	16	42631	117	7	381	3.256	66	56.4	9.429
ESF	ALEXANDRIA	N	14	40176	110	8	226	2.055	70	63.6	8.750
VLD	VALDOSTA MUNICIPAL	N	16	38399	105	7	704	6.705	141	134.3	20.143
FYV	FAYETTEVILLE DRAKE	N	16	37322	102	6	346	3.392	64	62.7	10.667
EWN	NEW BERN	N	15	35896	98	7	248	2.531	71	72.4	10.143
PSE	PONCE MERCEDITA	N	16	35521	97	6	354	3.649	57	58.8	9.500
HOB	HOBBS LEA COUNTY	N	24	35402	97	4	253	2.608	37	38.1	9.250
PAH	PADUCAH BARKLEY FIE	N	15	35342	97	6	206	2.124	60	61.9	10.000
KWA	KWAJALEIN AAF	N	16	29776	82	5	249	3.037	73	89.0	14.660
AKN	KING SALMON	N	12	29354	80	7	215	2.688	51	63.8	7.286
ISO	KINSTON	N	8	29196	80	10	223	2.788	56	70.0	5.600
GCN	GRAND CANYON MUNICI	N	12	26627	73	6	263	3.603	63	86.3	10.500
VDZ	VALDEZ	N	10	21072	58	6	219	3.776	34	58.6	5.667
LMB	LEWISBURG GREENBRIE	N	8	20655	57	7	376	6.596	32	56.1	4.571
ADQ	ADDJAK	N	16	17297	47	3	178	3.767	52	110.8	17.333
SCC	DEADHORSE	N	16	15344	42	3	117	2.785	15	35.7	5.000
28	VOLUMES LESS THAN 50000		423	1058051	2897	200	5556	3.427	1822	62.9	9.110
287			5986	39828317	109123	5089	212260	1.954	28412	26.0	5.583

TABLE 4 - TOTAL INSTRUMENT OPERATION AT AIR COMMERCE AIRPORT, FY 1976

LOCAL IDENT	LOCATION	HUB	DAILY HOURS OF OPS	TOTAL	ANNUAL OPERATIONS			AVG DAY INSTR OPS	PEAK DAY OPERATIONS			BUSY HOUR OPERATIONS			OPERATIONS INSTR O/U		
					INSTR C/O	INSTR	TTIN		TTIN	INSTR	TTIN	INSTR	TTIN	INSTR	TTIN	INSTR	TTIN
GRD	CHICAGO CHARE INTL	L	24	652105	806106	116.5	116.5	2205	2757	2757	122.2	171	163	95.3			
ATL	ATLANTA INTERNATIONAL	L	24	473876	585727	124.4	125.8	1610	1462	2000	136.8	114	154	135.1			
LAX	LOS ANGELES INTERNA	L	24	467479	562332	120.3	125.5	1541	233	1558	831.8	28	104	371.4			
DFW	DALLAS FT WORTH REG	L	24	351426	517421	147.2	147.3	1418	1104	1015	164.4	89	144	161.8			
MIA	MIAMI INTERNATIONAL	L	24	283382	495667	171.5	171.9	1358	1214	1645	152.3	104	159	152.9			
PHL	PHILADELPHIA INTL	L	24	300987	461066	153.2	153.2	1263	1084	1585	146.2	96	96	100.0			
DEN	DENVER STAPLETON IN	L	24	400424	382095	109.3	114.5	1195	1313	1497	114.0	123	136	110.6			
DCA	WASHINGTON NATIONAL	L	24	312873	406263	129.8	130.0	1113	1100	1600	137.5	98	143	145.9			
IAH	HOUSTON INTERCONTIN	L	24	201174	396309	157.0	201.6	1086	704	1573	224.1	61	132	216.4			
PIT	PITTSBURGH GREATER	L	24	294839	391582	132.3	135.6	1073	1053	1453	136.0	95	141	142.4			
STL	ST LOUIS INTERNATIO	L	24	314583	390552	124.1	124.7	1070	1147	1139	95.3	94	110	117.0			
LGA	LA GUARDIA	L	24	335379	385664	116.2	116.2	1068	1182	1531	129.5	100	138	138.0			
DTW	DETROIT METRO WAYNE	L	24	242647	388174	160.0	160.0	1028	377	1583	419.5	32	120	375.0			
BOS	BOSTON LOGAN	L	24	300799	287966	122.0	127.4	1005	1177	1248	106.5	95	84	88.4			
JFK	JOHN F KENNEDY INTL	L	24	335636	356985	106.4	106.4	970	1072	1239	117.4	110	110	100.0			
LAS	LAS VEGAS MCCARRAN	L	24	294143	354133	120.4	146.8	970	538	631	117.3	102	09	67.6			
TPA	TAMPA INTERNATIONAL	L	24	172479	185758	172.6	178.5	910	071	1226	182.7	55	121	220.0			
MEM	MEMPHIS INTERNATIONAL	M	24	297883	322248	108.8	114.6	868	1053	1208	110.5	90	131	136.5			
BAL	BALTIMORE WASHINGTON	M	24	226476	321400	141.5	152.4	881	830	1201	144.7	79	118	149.4			
CLE	CLEVELAND HOPKINS I	L	24	228617	317443	138.5	159.5	870	750	1266	168.8	55	114	207.3			
SFO	SAN FRANCISCO	L	24	337750	310756	92.0	92.0	821	1120	0	0.0	87	0	0.0			
CMH	COLUMBUS INTERNATIO	M	24	254809	310559	121.9	167.0	821	172	1275	165.2	54	37	161.1			
MSP	MINNEAPOLIS ST PAUL	L	24	268448	310473	115.7	122.9	851	852	1185	139.1	73	110	150.7			
BUR	BURBANK	L	24	253000	194345	121.5	158.7	845	715	1083	139.7	74	109	147.3			
SAT	SAN ANTONIO INTERNA	M	24	205018	305569	149.0	174.0	837	686	1356	197.7	68	150	220.6			
JAX	JACKSONVILLE INTL	M	24	126688	303303	239.4	314.5	831	369	1581	428.5	48	183	381.3			
HNL	HONOLULU	L	24	318187	272407	300115	94.3	822	576	641	65.7	92	60	65.2			
MCI	KANSAS CITY INTERNA	L	24	173380	172641	285305	159.9	782	600	878	146.3	70	92	131.4			
SEA	SEATTLE TACOMA INTL	L	24	167427	164089	168.6	171.4	771	545	1074	195.6	48	88	183.3			
ORF	NORFOLK REGIONAL	M	24	161495	280633	173.8	249.2	769	468	1193	254.9	48	126	262.5			
IND	INDIANAPOLIS WEIR C	M	24	210871	197301	125.9	134.6	728	757	1033	136.5	71	77	100.0			
PDX	PORTLAND INTERNATIO	M	24	209772	164364	231136	110.2	633	640	879	137.3	66	90	136.4			
OKC	OKLAHOMA CITY WILL	M	24	145457	229748	157.9	192.3	625	475	912	192.0	65	70	107.7			
MSY	NEW ORLEANS MOISANT	L	24	143893	224433	156.6	164.6	615	444	700	157.7	47	64	136.2			

TABLE 4 - TOTAL INSTRUMENT OPERATION AT AIR COMMERCE AIRPORT, FY 1976

LOCAL IDENT	LOCATION	HUB	DAILY HOURS OF OPS	ANNUAL OPERATIONS			PEAK DAY OPERATIONS			BUSY HOUR OPERATIONS			OPERATIONS O/G		
				TOTAL	INSTR O/G	ITIN	TOTAL	INSTR O/G	ITIN	TOTAL	INSTR O/G	ITIN	TOTAL	INSTR O/G	ITIN
CLT	CHARLOTTE DOUGLAS	M	24	201964	155140	224030	110.5	114.0	614	715	852	79	99	125.3	
MKE	MILWAUKEE MITCHELL	M	24	217529	174433	221511	101.8	127.0	600	718	852	58	70	120.7	
IAD	WASHINGTON DULLES I	L	24	183516	133947	218861	119.3	163.4	600	455	501	83	108	130.1	
SLC	SALT LAKE CITY INTL	M	24	249093	199342	216050	86.8	108.4	582	758	883	74	69	93.2	
ABQ	ALBUQUERQUE INTERNA	M	24	222744	185247	212842	95.6	114.5	583	605	759	93	102	109.7	
BNA	NASHVILLE METROPOLI	M	24	212060	185906	209053	58.6	112.5	573	785	832	64	73	114.1	
ENR	NEWARK	L	24	189775	189775	208795	110.0	110.0	572	674	782	45	80	163.3	
GSD	GREENSBORO REGIONAL	M	24	157241	115636	199593	126.9	172.6	547	641	762	46	74	160.9	
BOL	WINDSOR LOCKS	M	24	138912	138634	199234	143.4	146.9	546	712	862	52	71	136.5	
PBI	WEST PALM BEACH	M	24	215496	162166	198739	92.2	122.6	544	583	711	97	104	107.2	
SJU	SAN JUAN INTERNATIO	L	24	195316	192408	193605	99.1	100.6	530	733	785	70	91	130.0	
CVG	CINCINNATI GREATER	M	24	153114	125723	192516	125.7	153.1	527	447	524	45	59	153.3	
PNS	PENSACOLA	S	24	111047	52273	190027	171.1	363.5	521	254	313	42	116	276.2	
LIT	LITTLE ROCK ADAMS F	S	24	153887	127326	185748	123.3	149.0	520	634	787	52	59	113.5	
ICT	WICHITA MID CONTINE	S	24	242567	178237	188630	77.6	105.8	517	700	789	102	77	75.5	
BHM	BIRMINGHAM	M	24	137649	146026	182808	97.4	126.9	501	575	718	69	79	121.5	
SDF	LOUISVILLE STANDIFO	M	24	115631	106340	177613	153.6	167.0	487	543	760	50	78	156.0	
MCO	ORLANDO JEIPORT	M	24	87552	82780	176250	201.3	212.9	463	331	814	24	61	254.2	
TUL	TULSA INTERNATIONAL	M	24	197682	170105	174397	88.2	102.5	478	821	766	109	86	81.1	
BUF	BUFFALO INTERNATIONAL	M	24	146590	130158	165013	112.6	126.8	452	422	569	47	56	114.3	
RDU	RALEIGH DURHAM	M	24	193064	139569	164757	85.4	118.1	451	567	673	12	72	100.0	
LBB	LUBBOCK	S	24	128695	83788	154485	120.0	184.4	423	362	960	41	124	302.4	
DSM	DES MOINES MUNICIPA	S	24	193627	154347	153379	78.7	99.8	422	654	646	69	71	107.6	
CAK	AKRON CANTON REGION	S	24	154647	90496	149592	56.7	165.3	410	456	677	75	74	88.7	
RIC	RICHMOND BYRD INTL	S	24	163528	122735	149158	91.3	121.5	409	545	637	48	42	87.5	
ALB	ALBANY COUNTY	M	24	117939	99410	147137	124.6	148.0	403	428	600	52	58	130.8	
SYR	SYRACUSE HANCOCK IN	M	24	160246	111044	142518	89.2	128.7	392	354	375	52	36	69.2	
ELP	EL PASO INTERNATIONAL	M	24	187886	117812	141156	75.1	115.8	387	452	529	54	70	129.6	
SHV	SHREVEPORT	S	24	63801	53667	139288	268.5	259.5	382	203	480	45	53	117.8	
TYS	KNOXVILLE MCGHEE TY	S	24	134791	105738	139026	103.1	121.5	381	458	578	54	64	155.6	
TOL	TOLEDO EXPRESS	S	24	127744	83366	135361	106.0	162.4	371	400	611	53	66	124.5	
MGM	MONTGOMERY DANNELLY	S	24	95199	70079	134021	140.8	151.2	367	377	610	36	61	169.4	
MGN	MACON LEWIS B WILSO	N	24	56003	39969	131953	235.6	366.9	362	170	521	24	63	262.5	
PHX	PHOENIX SKY HARBOR	L	24	425773	336325	126156	29.6	37.5	346	1562	503	145	92	63.4	



TABLE 4 -- TOTAL INSTRUMENT OPERATION AT AIR COMMERCE AIRPORT, FY 1976

LOCAL IDENT	LOCATION	HUB	DAILY HOURS OF OPNS	ANNUAL OPERATIONS			PEAK DAY OPERATIONS			BUSY HOUR OPERATIONS			O/O	
				ITIN	INSTR	INSTR O/O	ITIN	INSTR	INSTR O/O	ITIN	INSTR	INSTR O/O		
ROC	ROCHESTER MONROE CO	M	24	114191	125320	56.6	109.7	343	509	376	73.9	83	180.0	
CAE	COLUMBIA METROPOLIT	S	24	84627	122766	101.2	145.1	336	350	507	144.9	44	131.8	
HPN	WHITE PLAINS WESTCH	N	24	143570	121465	58.6	84.6	333	719	682	94.9	57	91.9	
CHS	CHARLESTON AFB MUNI	S	24	125151	121181	56.8	120.8	332	409	500	122.2	53	107.5	
BTV	BURLINGTON INTERNAT	N	24	105527	120134	113.8	181.4	329	334	566	169.5	40	152.5	
FLL	FORT LAUDERDALE	L	24	314494	117027	37.2	49.4	321	981	515	52.5	103	48.5	
SBN	SOUTH BEND	S	24	116265	68960	100.1	168.8	319	590	544	92.2	87	66.7	
CRP	CORPUS CHRISTI	S	24	134153	75006	65.2	152.4	313	346	619	178.9	42	145.2	
ANC	ANCHORAGE INTL RAPC	M	24	236144	113928	48.2	74.0	312	349	303	86.8	61	47.5	
MOB	MOBILE BATES FIELD	S	24	113645	68671	99.0	163.9	308	313	502	160.4	40	130.0	
GRR	GRAND RAPIDS	S	24	174000	105268	62.1	102.6	256	457	629	126.6	55	62	
SAV	SAVANNAH MUNICIPAL	S	24	94516	68726	112.1	154.2	290	170	477	280.6	29	62	
HSV	HUNTSVILLE MADISON	S	24	102760	61263	101.8	170.7	286	333	397	119.2	36	48	
SDN	SAN DIEGO LINDBERG	M	24	202177	160588	51.3	64.6	284	610	400	65.6	55	63.6	
COS	COLORADO SPRINGS	S	24	177045	104466	57.7	97.7	280	775	723	93.3	34	194.1	
VOLUMES				1992	17766285	15160418	113.8	133.3	55376	57057	75184	131.8	5659	7230
100000 AND OVER														

TABLE 4 - TOTAL INSTRUMENT OPERATION AT AIR COMMERCE AIRPORT, FY 1976

LOCAL IDENT	LOCATION	HUB	DAILY HOURS OF OPNS	ANNUAL OPERATIONS			PEAK DAY OPERATIONS			BUSY HOUR OPERATIONS			BUSY HOUR OPERATIONS		
				TOTAL	INSTR	INSR C/O	ITIN	INSR	INSR C/O	ITIN	INSR	INSR C/O	ITIN	INSR	INSR C/O
AUS	AUSTIN	S	24	168773	98843	58.6	84.1	271	521	525	100.8	68	56	82.4	
SJC	SAN JOSE MUNICIPAL	S	24	453431	236727	21.2	40.6	264	608	300	43.0	122	35	28.7	
FAY	FAYETTEVILLE GRANNI	S	24	84872	94370	111.2	212.2	259	412	542	131.5	71	68	95.8	
LGB	LONG BEACH	L	24	553113	92456	16.7	30.5	253	1270	546	43.4	141	32	22.7	
SNA	SANTA ANA	L	15	627441	316983	14.3	28.4	246	1254	604	46.7	158	171	108.2	
DAL	DALLAS LOVE FIELD	L	24	305403	225448	29.4	35.8	246	630	425	50.8	154	52	33.8	
DAY	DAYTON	M	24	156039	82189	52.7	63.5	225	1146	359	35.8	40	37	92.5	
CSG	COLUMBUS	S	24	85263	81546	56.1	147.4	225	225	364	159.0	40	37	142.5	
GRB	GREEN BAY AUSTIN ST	S	24	89275	58264	91.4	140.0	224	235	439	151.5	40	42	105.0	
DAK	OAKLAND INTERNATIONAL	L	24	368868	79297	21.5	39.1	217	631	344	41.4	136	73	53.7	
LAN	LANSING	S	24	178029	102032	77751	43.7	213	1835	594	32.4	585	38	15.1	
GSP	GREER	S	24	49795	44076	73555	148.5	202	151	357	207.5	27	44	163.0	
GRM	CHARLESTON	S	24	124061	73796	58.5	76.0	202	615	171	67.4	58	28	48.3	
LEX	LEXINGTON	S	24	118560	89602	72677	61.2	155	520	359	64.4	78	42	53.8	
OMA	OMAHA	M	24	169414	119293	42.7	60.6	158	400	0	0.0	60	0	0.0	
FAT	FRESNO AIR TERMINAL	S	24	228968	170285	67859	29.6	186	678	0	0.0	76	43	56.0	
ROA	RUANOKE	S	24	119770	81143	67251	56.2	184	468	330	70.5	83	45	54.2	
ONT	ONTARIO	S	24	161089	126128	66575	41.2	182	565	301	53.3	63	32	50.8	
SMF	SACRAMENTO METRO	S	24	120593	71917	65743	54.5	180	295	0	0.0	59	47	79.7	
CHA	CHATTANOOGA	S	24	127762	87609	65465	51.2	175	562	420	116.0	59	47	79.7	
JAN	JACKSON MUN ARPT	S	24	77648	61354	64939	83.6	178	266	280	105.3	30	41	136.7	
FWA	FORT WAYNE	S	24	119776	81987	61502	51.3	168	337	317	94.1	50	33	66.0	
ABI	ABILENE	N	24	88930	49801	56226	63.2	154	229	255	128.8	29	37	127.6	
MSN	MADISON	S	24	210273	106296	55511	26.4	152	523	291	59.6	48	27	56.3	
TUS	TUCSON	M	24	229139	137145	55038	24.0	151	709	242	34.1	8	18	225.0	
MW	CHICAGO MIDWAY	L	24	173986	161513	53785	30.9	147	851	341	40.1	90	33	42.2	
MLI	MOLINE	S	24	120508	79660	52678	43.7	144	440	267	65.1	135	38	28.6	
PIA	PEDRIA	S	24	153944	84964	50947	33.1	140	422	272	64.5	68	26	38.2	
ERT	ERIE	S	24	82919	50353	50450	60.8	138	354	254	71.8	45	29	67.4	
29	VOLUMES 50000 - 59999		688	5847642	3488611	2090995	37.7	5728	17612	9559	54.5	2403	1249	52.0	

TABLE 4 - TOTAL INSTRUMENT OPERATION AT AIR COMMERCE AIRPORT, FY 1976

LOCAL IDENT	LOCATION	HUB	DAILY HOURS OF OPS	ANNUAL OPERATIONS			AVG DAY INSTR OPS	PEAK DAY OPERATIONS			BUSY HOUR OPERATIONS			TOTAL OPERATIONS		
				TOTAL	INSTR O/C	INSTR I/TIN		ITIN	INSTR O/C	INSTR I/TIN	ITIN	INSTR O/C	INSTR I/TIN	ITIN	INSTR O/C	INSTR I/TIN
RFD	ROCKFORD	N	24	184292	49556	56353	137	574	260	37	51.8	45.3	51	83.8		
SPI	SPRINGFIELD CAPITAL	N	24	146933	49655	93542	136	455	260	60	53.1	61.0	25	41.7		
AMA	AMARILLO	S	24	92384	49172	54934	135	234	253	24	89.5	108.1	26	108.3		
MAF	MIDLAND	S	24	131045	48767	37.2	134	346	252	33	59.3	72.8	24	72.7		
EVV	EVANSVILLE	S	24	93822	48438	72061	133	314	241	44	67.2	76.8	30	68.2		
YNG	YOUNGSTOWN	S	24	92069	48227	52.4	132	340	266	90	93.1	78.2	45	50.0		
FAT	FAIRBANKS	S	24	191474	47825	25.0	131	320	240	54	44.5	46.2	12	22.2		
AZO	KALAMAZOO	S	24	138627	46828	33.8	128	425	265	50	61.2	61.8	34	68.0		
GEG	SPOKANE INTERNATIONAL	M	24	137572	46650	33.9	128	360	198	37	54.3	55.0	20	54.1		
ABE	ALLENTOWN	S	24	142094	46510	32.7	127	415	250	74	52.8	60.2	28	37.8		
DLH	DULUTH	S	24	83410	44241	53.0	121	264	100	53	91.4	68.2	23	43.4		
TRI	BRISTOL TRI CITY	S	24	95217	43946	46.2	120	262	203	51	71.7	71.7	28	54.9		
AGS	AUGUSTA	S	24	77146	43906	56.9	120	317	275	40	83.8	80.8	35	87.5		
ACY	ATLANTIC CITY	N	24	103295	43072	41.7	118	258	287	43	110.2	111.2	27	62.8		
MRY	MUNFERY	S	24	113492	43078	38.0	118	410	225	45	54.8	54.1	30	66.7		
LNK	LINGOLN MUNICIPAL	S	24	222921	42318	19.0	116	300	223	83	38.8	44.6	29	34.9		
BTR	BATON ROUGE RYAN FI	S	24	132512	42157	31.8	115	475	216	45	50.3	45.1	22	47.8		
CID	CEDAR RAPIDS	S	24	117869	40888	34.7	112	302	312	65	60.9	123.2	25	38.5		
UGG	KAHULUI	M	16	80376	40604	71159	111	295	153	42	59.1	59.1	27	64.3		
FSD	SIOUX FALLS FOSS FL	L	24	110239	40022	36.2	110	355	201	13	54.5	56.6	10	76.9		
DET	DETROIT CITY	L	24	187615	39885	21.3	105	334	325	65	34.8	52.2	22	24.7		
AVP	WILKES BARRE	S	24	31658	39300	48.1	103	304	205	41	68.5	67.4	24	58.5		
BGM	BINGHAMTON BROOME C	N	24	75991	39291	51.7	102	260	222	45	74.9	85.4	21	45.7		
BDI	BOISE	S	24	229400	38977	17.0	107	300	250	92	27.8	38.3	24	20.1		
CMI	CHAMPAIGN UNIV OF I	N	24	180460	38796	21.5	106	323	214	49	53.2	59.1	23	46.9		
LFT	LAFAYETTE	N	24	157416	38533	24.5	106	333	229	68	31.5	43.6	36	52.9		
FNT	FLINT BISHOP	S	24	173067	38333	22.1	105	305	231	103	52.0	51.5	23	22.3		
AVL	ASHEVILLE	S	24	59784	37174	62.2	102	373	181	34	77.1	49.5	22	26.2		
DAB	DAYTONA BEACH	S	24	230947	36548	16.0	101	332	217	91	23.3	28.9	19	20.9		
RND	RENO INTERNATIONAL	M	24	159305	36622	23.4	100	355	166	65	30.5	33.5	27	41.5		
MBS	SAGINAW TRI CITY	N	24	81500	36390	44.7	100	356	209	65	70.0	34.5	25	33.3		
ELM	ELMIRA	N	24	98761	35730	36.2	98	371	154	56	72.9	32.2	17	30.4		
ILM	WILMINGTON NEW HANO	N	24	89196	35540	39.8	97	279	187	36	71.7	67.0	25	69.4		
RST	ROCHESTER	N	24	101576	35278	33.8	97	303	200	47	61.6	52.2	25	53.2		



TABLE 4 - TOTAL INSTRUMENT OPERATION AT AIR COMMERCE AIRPORT, FY 1976

LOCAL IDENT	LOCATION	HUB	DAILY HOURS OF OPNS	ANNUAL OPERATIONS			INSTR O/O	AUG DAY INSTR OPNS	PEAK DAY OPERATIONS			BUSY HOUR OPERATIONS			INSTR O/O
				TOTAL	ITIN	INSTR			ITIN	INSTR	ITIN	INSTR	ITIN	INSTR	
SCK	STOCKTON	N	24	131316	82158	35136	26.6	42.6	500	179	45.7	44	22	50.0	
TLH	TALLAHASSEE	N	24	112773	72606	35078	31.1	48.4	505	166	54.4	51	29	56.9	
FSM	FORT SMITH MUNICIPAL	N	24	93303	57166	34980	37.5	61.2	363	174	47.9	40	28	70.0	
SUX	SIOUX CITY MUNICIPAL	S	24	96414	65371	34902	36.2	53.4	268	180	62.5	46	27	58.7	
HTS	HUNTINGTON	N	16	59047	46187	34814	59.0	75.4	185	155	104.3	68	26	38.2	
PVD	PROVIDENCE	S	24	203067	119935	33775	16.6	28.2	621	182	29.3	71	20	28.2	
DHN	DOTHAN	N	16	93835	58250	32818	35.0	56.3	344	130	37.8	75	26	34.7	
GPT	GULFPORT	N	17	83687	55379	32688	39.1	59.0	321	155	48.3	49	27	55.1	
BEL	BAKERSFIELD MEADOWS	N	13	141676	122084	30556	21.6	25.0	64	269	51.9	88	12	13.6	
EUG	EUGENE	S	24	133726	77065	29667	22.2	38.5	81	466	33.7	42	23	54.8	
ILG	WILMINGTON GR WILM	N	24	171479	86254	25653	17.3	34.4	61	338	33.5	26	13	50.0	
FAR	FARGO HECTOR FIELD	S	24	102391	62678	29343	28.7	46.8	80	324	54.3	32	28	87.5	
SGF	SPRINGFIELD	S	24	86863	57763	29181	33.6	50.5	80	250	56.4	71	19	26.8	
PUB	PUEBLO	N	24	124851	49034	28681	23.0	36.5	79	224	71.4	45	28	62.2	
BGR	BANGOR INTERNATIONAL	S	24	85042	59911	27792	32.7	49.6	76	330	54.5	52	22	42.3	
MLU	MONROE	N	24	101110	68824	27308	27.0	39.7	75	278	62.2	49	17	34.7	
FAY	FORT MYERS PAGE FIE	S	16	102432	70598	27288	26.6	38.7	75	343	60.6	59	24	40.7	
MDT	MIDDLETON	S	24	82029	49731	27201	33.2	54.7	131	61	46.6	20	20	100.0	
BPT	BEAUMONT PORT ARTHU	N	24	106065	62317	27173	25.6	43.6	74	323	51.1	57	22	38.6	
BIL	BILLINGS	S	24	115414	77910	26716	23.1	34.3	73	367	33.0	52	22	42.3	
PWM	PURFLAND	S	16	113410	70848	26037	23.0	36.8	71	441	37.6	60	18	30.0	
ITD	HILO GENERAL LYMAN	M	24	51904	38972	25952	50.0	66.6	71	210	61.9	32	32	100.0	
MKG	MUSKEGUN	N	24	91959	46197	25366	27.6	54.9	69	439	34.2	29	12	41.4	
MLB	MELBOURNE	S	18	218514	90628	25306	11.6	27.9	69	457	26.0	36	10	27.8	
ALU	WATERLOO	S	18	101221	56285	25008	24.7	44.4	69	265	55.7	36	17	47.2	
59				7200002	4361110	2175603	30.2	45.9	5960	23150	11971	3150	1406	44.6	

VOLUMES

25000 - 49999

TABLE 4 - TOTAL INSTRUMENT OPERATION AT AIR COMMERCE AIRPORT, FY 1976

LOCAL IDENT	LOCATION	HUB	OPNS	DAILY HOURS OF	ANNUAL OPERATIONS			AVG DAY INSTR OPNS	PEAK DAY OPERATIONS			BUSY HOUR OPERATIONS			TOTAL OPERATIONS									
					INSTR	ITIN	TOTAL		ITIN	INSTR	ITIN	INSTR	ITIN	INSTR	ITIN	INSTR	ITIN	INSTR	ITIN					
LH	LIHUE	M	16	53647	49376	24926	46.5	50.5	133	91	68.4	25	14	56.0	49376	24926	46.5	50.5	133	91	68.4	25	14	56.0
SJT	SAN ANGELO	N	24	86332	52532	24684	28.6	47.0	487	224	46.0	43	39	90.7	52532	24684	28.6	47.0	487	224	46.0	43	39	90.7
JXN	JACKSON REYNOLDS MU	N	16	82147	53821	24253	29.5	45.1	456	162	35.5	65	20	30.8	53821	24253	29.5	45.1	456	162	35.5	65	20	30.8
SBA	SANTA BARBARA	S	16	184155	114946	24160	13.1	21.0	541	235	43.4	89	33	37.1	114946	24160	13.1	21.0	541	235	43.4	89	33	37.1
ACT	MACO MUNICIPAL	N	24	72494	52016	23989	33.1	46.1	300	164	54.7	29	24	82.8	52016	23989	33.1	46.1	300	164	54.7	29	24	82.8
CKB	CLARKSBURG BENEDUM	N	16	75953	43105	23867	31.4	55.4	237	169	71.3	25	21	84.0	43105	23867	31.4	55.4	237	169	71.3	25	21	84.0
INT	WINSTON SALEM	M	16	90297	59728	23582	26.1	39.5	353	130	36.8	40	21	52.5	59728	23582	26.1	39.5	353	130	36.8	40	21	52.5
PHF	NEWPORT NEWS	S	24	193486	73298	23344	12.1	31.8	360	131	36.4	66	8	12.1	73298	23344	12.1	31.8	360	131	36.4	66	8	12.1
MHT	MANCHESTER	N	17	110195	71262	23137	21.0	32.5	447	113	29.3	66	18	27.3	71262	23137	21.0	32.5	447	113	29.3	66	18	27.3
LZH	LYNCHBURG	N	16	82949	45344	23013	27.7	50.8	259	113	49.3	52	15	28.8	45344	23013	27.7	50.8	259	113	49.3	52	15	28.8
SRQ	SARASOTA BRADENTON	S	18	133853	91322	22869	17.2	25.2	354	130	39.0	53	19	38.8	91322	22869	17.2	25.2	354	130	39.0	53	19	38.8
BKL	CLEVELAND BURKE LAK	L	16	60620	48814	22869	27.7	46.8	279	144	51.6	56	27	75.0	48814	22869	27.7	46.8	279	144	51.6	56	27	75.0
LSE	LA CROSSE	N	16	82922	48457	22262	26.8	45.5	252	121	46.9	48	16	33.3	48457	22262	26.8	45.5	252	121	46.9	48	16	33.3
DEC	DECATUR	N	18	84084	51230	21695	25.8	42.3	290	131	45.2	78	20	25.6	51230	21695	25.8	42.3	290	131	45.2	78	20	25.6
LCH	LAKE CHARLES	N	16	52660	34748	21522	40.5	61.9	57	110	113.4	19	10	52.6	34748	21522	40.5	61.9	57	110	113.4	19	10	52.6
IPT	WILLIAMSPORT	N	24	84781	48711	20568	24.3	42.2	438	129	50.0	40	20	50.0	48711	20568	24.3	42.2	438	129	50.0	40	20	50.0
PSC	PASCO TRI CITIES	N	16	95148	55375	20540	21.6	37.1	287	116	41.1	41	17	41.5	55375	20540	21.6	37.1	287	116	41.1	41	17	41.5
BRD	BROWNSVILLE INTERNA	N	24	47475	37202	20299	42.8	54.6	203	102	50.2	32	18	56.3	37202	20299	42.8	54.6	203	102	50.2	32	18	56.3
PFN	PANAMA CITY BAY COU	N	17	117381	53607	20250	17.3	27.8	240	104	43.3	36	17	47.2	53607	20250	17.3	27.8	240	104	43.3	36	17	47.2
CYS	CHEYENNE	N	24	92253	50245	20147	21.8	40.1	194	133	71.1	21	16	76.2	50245	20147	21.8	40.1	194	133	71.1	21	16	76.2
TOP	TOPEKA PHILIP BALLA	N	24	146602	83280	19708	13.4	23.7	811	145	21.3	65	20	30.8	83280	19708	13.4	23.7	811	145	21.3	65	20	30.8
ISP	ISLIP MACARTHUR	S	24	323101	153563	19698	6.1	12.8	1177	162	13.8	157	19	12.1	153563	19698	6.1	12.8	1177	162	13.8	157	19	12.1
COU	COLUMBIA REGIONAL	N	16	54714	31714	19206	35.1	60.6	362	140	38.7	75	16	21.3	31714	19206	35.1	60.6	362	140	38.7	75	16	21.3
GFK	GRAND FORKS INTERNA	N	16	187209	47187	18167	9.7	38.5	250	150	60.0	36	17	47.2	47187	18167	9.7	38.5	250	150	60.0	36	17	47.2
SLN	SALINA	N	16	100792	52775	17995	17.5	34.1	402	139	34.6	63	17	27.0	52775	17995	17.5	34.1	402	139	34.6	63	17	27.0
UXR	UXNARD VENTURA COUN	N	16	213033	118437	17762	8.3	15.0	558	14	2.5	116	14	12.1	118437	17762	8.3	15.0	558	14	2.5	116	14	12.1
TAG	NIAGARA FALLS	M	24	155593	57327	17580	11.3	30.7	502	116	21.1	85	29	34.1	57327	17580	11.3	30.7	502	116	21.1	85	29	34.1
TIN	TRENTON	N	24	182250	89446	17463	9.6	19.5	502	64	16.7	68	25	36.8	89446	17463	9.6	19.5	502	64	16.7	68	25	36.8
HUT	HUTCHINSON	N	16	79828	46168	16739	21.0	36.3	366	167	29.2	59	20	33.9	46168	16739	21.0	36.3	366	167	29.2	59	20	33.9
ROW	RUSWELL	N	16	98396	36072	16558	16.8	45.9	199	112	75.2	25	25	100.0	36072	16558	16.8	45.9	199	112	75.2	25	25	100.0
HVA	HYANNIS	N	17	99721	74252	16550	16.6	22.2	396	154	32.6	70	20	28.6	74252	16550	16.6	22.2	396	154	32.6	70	20	28.6
KDA	KONA KE AHOLE	S	16	49465	34828	16417	33.2	47.1	168	54	58.5	35	15	42.9	34828	16417	33.2	47.1	168	54	58.5	35	15	42.9
JLN	JUPLIN	N	16	57013	36033	16165	28.4	46.1	44	64	10.8	44	16	4.5	36033	16165	28.4	46.1	44	64	10.8	44	16	4.5
YKM	YAKIMA AIR TERMINAL	N	17	120608	67350	16033	13.3	23.8	333	129	35.4	37	14	37.8	67350	16033	13.3	23.8	333	129	35.4	37	14	37.8

TABLE 4 - TOTAL INSTRUMENT OPERATION AT AIR COMMERCE AIRPORT, BY 1976

LOCAL IDENT	LOCATION	FLY OPS	DAILY HOURS UP	ANNUAL OPERATIONS			PEAK DAY OPERATIONS			BUSY HOUR OPERATIONS			INSTR C/G		
				TOTAL	INSTR C/G	ITIN	INSTR C/G	ITIN	INSTR C/G	ITIN	INSTR C/G	ITIN	INSTR C/G	ITIN	
BIS	BISMARCK	N	24	86266	16031	18.6	28.7	44	52	33.5	52	18	34.6		
GPR	CASPER	N	16	71937	15789	21.5	30.8	43	86	24.1	15	12	80.0		
MFR	MEDFORD JACKSON COU	S	24	138784	15650	11.2	15.1	42	59	12.9	50	22	24.4		
UCA	UTICA	N	24	73994	15511	21.6	39.8	42	42	18.2	32	12	37.5		
MGM	MORGANTOWN	N	15	75497	15411	20.4	35.7	42	51	24.5	50	20	44.0		
PAH	PADUCAH BARKLEY FIE	N	15	35342	27612	42.7	54.7	41	44	75.2	22	16	72.7		
ABY	ALBANY	N	16	117368	15100	12.9	25.3	41	85	38.6	38	13	36.1		
GRI	GRAND ISLAND	N	16	79833	14886	18.6	30.6	41	104	36.1	38	15	39.5		
GGG	LONGVIEW	N	24	107107	56115	17.5	26.5	41	56	40.0	57	15	40.5		
ACK	NANTUCKET MEMORIAL	N	16	52434	14454	27.6	30.4	40	25	42.2	57	23	23.7		
TAK	TEXARKANA	N	24	61628	14329	23.3	33.1	39	64	22.4	34	15	44.1		
RAP	RAPID CITY	S	16	39339	46293	16.0	30.8	35	27	36.3	23	17	68.0		
ESF	ALEXANDRIA	N	14	40176	14031	34.5	46.5	38	75	54.7	32	14	43.8		
PSP	PALM SPRINGS MUNICI	S	16	93323	13936	14.6	19.5	38	52	21.7	110	21	19.1		
HVN	NEW HAVEN	N	18	123122	73639	12.751	18.7	38	40	24.3	59	17	28.8		
FVY	FAYETTEVILLE DRAKE	N	16	37322	29714	11.2	45.4	37	30	19.4	43	7	16.3		
ORH	WORCESTER	N	24	75045	55518	17.9	24.2	37	41	17.3	46	8	16.7		
CHJ	CHARLOTTEVILLE ALB	N	16	50465	36611	25.8	35.5	36	185	55.7	60	12	13.2		
TVC	TRAVERSE CITY	N	12	86534	40267	14.6	31.4	35	269	30.5	23	12	52.2		
PKB	PARKERSBURG WOOD CO	N	16	97465	46032	12.0	26.3	35	274	24.9	80	15	17.0		
GNV	GAINESVILLE	N	16	36953	55561	14.3	22.4	34	36	20.5	75	12	16.4		
LAW	LAWTON MUNICIPAL	N	16	53646	28495	22.8	43.0	34	45	31	66.5	6	33.3		
HOT	HOT SPRINGS MEMORIA	N	16	63435	12073	19.0	28.8	33	320	28.7	87	13	14.9		
EMB	NEW BEDFORD	N	16	88022	55604	13.5	21.4	32	319	28.7	52	15	28.8		
DBQ	DUBUQUE	N	16	59303	11641	20.0	30.1	32	213	43.7	34	11	32.4		
GGI	CAPE MCNARY MUNI	N	16	54512	33922	11.44	32.9	31	81	23.6	63	16	25.4		
SLE	SALEM MCNARY FIELD	N	16	115096	10957	9.6	19.1	30	95	10.5	97	15	15.5		
MMU	MORRISTOWN	L	16	224701	10835	4.8	12.3	30	474	24.9	47	10	21.3		
USH	USHKOSH WITTMAN FIE	N	16	131909	10712	8.2	16.0	30	149	25.5	90	9	9.4		
GLH	GREENVILLE MUNICIPA	N	15	44456	10562	23.8	33.5	29	221	29.9	35	10	28.6		
TCL	TUSCALOOSA VAN DE G	M	14	63149	10494	16.6	25.8	25	228	32.9	36	11	30.6		
GTF	GREAT FALLS	S	24	108792	54263	9.6	19.3	29	217	111	43.2	16	25.8		
BEH	BENTON HARBOR ROSS	N	14	46148	10428	22.6	38.8	25	180	62	27	8	29.6		
MFE	MCALLEN	N	16	65576	10331	15.8	23.2	28	300	38.0	60	20	30.3		



TABLE 4 - TOTAL INSTRUMENT OPERATION AT AIR COMMERCE AIRPORT, FY 1970

LOCAL IDENT	LOCATION	HUB	DAILY HOURS OF USE	ANNUAL OPERATIONS			AVG DAY INSTR OPNS	PEAK DAY OPERATIONS			BUSY HOUR OPERATIONS			
				ITIN	INSTR	INSTR O/C TOTAL		ITIN	INSTR	ITIN INSTR O/O	ITIN	INSTR	ITIN INSTR	ITIN INSTR O/O
TYR TYLER		N	24	55164	48564	10224	21.1	28	245	98	35.4	44	14	31.8
			1246	6616005	3754073	1153013	17.4	31.0	23745	7521	31.7	3585	1150	28.9
69														

TABLE 4 - TOTAL INSTRUMENT OPERATION AT AIR COMMERCE AIRPORT, FY 1976

LOCAL IDENT	LOCATION	HUB	DAILY HOURS OF OPS	ANNUAL OPERATIONS		PEAK DAY OPERATIONS		BUSY HOUR OPERATIONS					
				TOTAL	INSTR	ITIN	INSTR	ITIN	INSTR	ITIN			
SMX	SANTA MARIA PUBLIC	N	12	82946	57664	9840	11.5	17.1	100	30.7	51	10	19.6
PIH	POCATELLO	N	16	56407	37239	9733	17.3	26.1	153	26.5	40	12	30.0
GJT	GRAND JUNCTION	S	16	73441	50297	5622	13.1	19.1	455	19.6	70	12	17.1
SCC	DEADHORSE	N	16	15344	14048	9444	61.5	67.2	104	102.0	11	12	109.1
IDA	IDAHO FALLS FANNING	N	16	71637	41623	8834	12.3	21.2	778	9.1	136	11	8.1
CRE	MYRTLE BEACH	N	10	63205	36392	8826	14.0	24.3	107	27.6	17	17	20.7
HRL	HARLINGEN INDUSTRIA	N	16	53181	32839	8573	16.1	26.1	132	39.1	22	11	50.0
MSO	MISSOULA	N	16	83717	43562	8526	10.2	19.6	218	15.1	61	10	16.4
LMT	KLANATH FALLS	N	24	66785	41806	8429	12.6	20.2	273	19.8	59	12	20.3
BMG	BLOOMINGTON MONROE	N	12	61875	33653	8308	13.4	24.7	452	15.5	32	15	46.9
HKY	HICKORY	N	15	47816	31015	8282	17.3	26.7	148	43.2	29	10	34.5
BMI	BLOOMINGTON NORMAL	N	12	89629	44013	8140	9.1	18.5	258	16.8	37	14	37.8
ITH	ITHACA TOMPKINS CO	N	12	54088	30163	7991	14.8	26.5	208	26.4	44	11	25.0
HLN	HELENA	N	24	58990	32065	7933	13.4	24.7	217	21.2	45	9	20.0
AKN	KING SALMON	N	12	29354	25751	7814	26.6	30.3	190	61.6	36	23	63.9
JVL	JANESVILLE	N	16	136570	47309	7496	5.5	13.8	584	10.8	173	15	8.7
LWB	LEMISBURG GREENBRIE	N	8	20655	15560	7225	35.0	46.4	368	53.5	28	21	75.0
LEB	LEBANON	N	16	46897	29465	7119	15.2	24.2	108	7.4	18	1	5.6
STX	ST CROIX ALEX HAMIL	N	14	69160	49423	7015	10.1	14.2	159	25.6	29	8	27.6
HLG	WHEELING	N	24	65439	36232	6922	10.6	15.1	360	16.4	75	6	8.0
ISO	KINSTON	N	8	29196	19980	6915	23.7	34.6	129	37.2	24	13	54.2
STT	ST THOMAS H S TRUMA	S	16	94670	84980	6843	7.2	8.1	469	14.3	42	10	23.8
EWN	NEW BERN	N	15	35896	21198	6784	18.9	32.0	109	56.0	25	8	32.0
AHN	ATHENS CLARKE COUNT	N	15	62005	34797	6477	10.4	18.6	274	15.3	58	9	15.5
JNU	JUNEAU	S	16	53098	39874	6384	12.6	16.0	270	13.7	21	11	52.4
FHN	FARINGTON	N	24	76251	52812	6349	8.3	12.0	229	17.0	55	9	16.4
RDD	REDDING	N	13	63524	43803	6186	9.7	14.1	318	15.1	34	7	20.6
VLD	VALDOSTA MUNICIPAL	N	16	38399	22483	6172	16.1	27.5	44	7.7	141	11	7.8
MOD	MODESTO CITY COUNTY	N	18	150225	75494	5812	3.9	7.7	342	29.5	54	15	27.8
LWS	LEWISTON	N	16	76073	49268	5569	7.3	11.3	36	8.4	48	11	22.9
TWF	TWIN FALLS	N	12	47819	35081	5265	11.0	15.0	247	22.7	20	7	35.0
PBF	PINE BLUFF GRIDER F	N	16	43050	29525	5210	12.1	17.6	352	20.5	46	6	13.0
PDT	PENDLETON	N	16	58586	41152	4872	8.3	11.8	668	3.1	98	6	6.1
CIC	CHICO	N	13	76444	47483	4362	5.7	9.2	235	18.7	42	10	23.8

TABLE 4 - TOTAL INSTRUMENT OPERATION AT AIR COMMERCE AIRPORT, FY 1976

LOCAL IDENT	LOCATION	HUB	DAILY HOURS OF OPS	ANNUAL OPERATIONS			INSTR O/C	INSTR O/O	AVG GAY INSTR OPNS	PEAK DAY OPERATIONS			BUSY DAY OPERATIONS			BUSY HOUR OPERATIONS		
				TOTAL	ITIN	INSTR				ITIN	INSTR	ITIN	INSTR	ITIN	INSTR	ITIN	INSTR	ITIN
IPL	IMPERIAL	N	14	48941	41531	4168	8.5	10.0	11	276	46	23	7	30.4				
ADQ	KODIAK	N	16	17297	7753	4149	24.0	53.5	11	57	46	8	10	125.0				
PSE	PUNCE MERCEDITA	N	16	35521	28795	4144	11.7	14.4	11	302	45	47	7	14.9				
HOB	HUBBS LEA COUNTY	N	24	35402	23800	3644	10.3	15.3	10	132	35	17	4	23.5				
ASE	ASPEN PITKIN COUNTY	N	16	42631	32866	3404	8.0	10.4	9	291	50	53	11	20.8				
GBG	GALESBURG MUNICIPAL	N	11	47617	28563	3385	7.1	11.5	9	563	41	150	7	4.7				
TVL	SOUTH LAKE TAHOE	N	15	53411	40306	3190	6.0	7.9	9	256	29	45	8	16.3				
MCE	MERCED	S	8	68256	39122	2661	3.9	6.8	7	281	39	52	24	46.2				
KWA	KWAJALEIN AAF	N	16	29776	18559	1769	5.9	9.5	5	87	22	20	4	20.0				
GCN	GRAND CANYON MUNICI	N	12	26627	25931	1212	4.6	4.7	3	245	5	53	2	3.8				
VDZ	VALDEZ	N	10	21072	17209	224	1.1	1.3	1	123	0	26	0	0.0				
WDG	ENID WOODRING MUNIC	N	14	70898	34850	0	0.0	0.0	0	285	37	43	8	18.6				
MEI	MERIDIAN KEY	N	16	48562	34365	0	0.0	0.0	0	585	161	63	14	22.2				
47	LESS THAN 10000		709	2698383	1701699	281222	10.4	16.5	768	14565	2723	2390	479	20.0				
287				5986 39828317	28465911	25911555	65.1	91.0	70952	156177	106958	17567	11514	65.5				



TABLE 5 - ITINERANT AIRCRAFT OPERATION AT GENERAL AVIATION AIRPORT, FY 1976

LOCAL IDENT	LOCATION	RUB	DAILY HOURS OF OPNS	ANNUAL	AIRCRAFT OPERATIONS - AVERAGE PER HOUR	PEAK LAY	RATIO OF PEAK/AVG LAY	BUSY HOUR OPNS	BUSY HOUR OF DAY AVG DAY	RATIO OF BUSY/AVG HOUR
VNY	VAN NUYS	L	24	332292	910	1514	1.664	188	20.7	4.947
HOU	HOUSTON HOBBY	L	24	246904	676	1058	1.555	95	14.1	3.393
BFI	SEATTLE BOEING	L	24	207394	568	1251	2.202	235	41.4	9.792
OPF	OPA LOCKA	L	18	204548	560	780	1.395	87	15.5	2.806
TOA	TORRANCE MUNICIPAL	L	16	194116	532	530	1.748	97	16.2	2.939
TEB	TETERBORO	L	24	192212	527	1084	4.057	120	22.8	5.455
HWD	HAYWARD	L	16	168861	463	748	1.616	95	20.7	3.310
SAC	SACRAMENTO EXECUTIV	S	24	168348	461	853	1.850	86	18.7	4.526
MRI	ANCHORAGE MERRILL	M	16	167654	459	852	1.943	105	22.9	3.621
RVS	TULSA RIVERSIDE	M	16	146382	401	711	1.773	67	21.7	3.480
CCR	CUNCORD	L	16	142684	391	680	1.735	68	17.4	2.833
SMO	SAN DIEGO MONTGOMER	M	15	141306	387	1019	2.633	140	36.2	5.385
MYF	SANTA MONICA	L	16	139442	382	661	1.730	88	23.0	3.667
FUL	FULLERTON MUNICIPAL	L	17	139311	382	784	2.052	104	27.2	4.727
BED	BEDFORD	L	16	136814	375	821	2.185	136	36.3	5.913
PWA	OKLAHOMA CITY WILEY	M	16	133147	365	645	1.767	83	22.7	3.609
FTW	FORT WORTH MEACHAM	L	16	131510	360	564	1.567	80	22.2	3.478
RHV	SAN JOSE REID HILLV	S	16	127290	349	656	1.854	82	23.5	3.727
NEW	NEW ORLEANS LAKEFRG	L	24	126924	348	617	1.773	92	26.4	6.133
ADS	DALLAS ADDISON	L	16	123709	339	522	1.540	63	16.6	3.000
SQL	SAN CARLOS	L	16	121777	334	548	1.641	55	16.5	2.619
PKD	ATLANTA DEKALB PEAC	L	16	121320	332	550	1.657	77	23.2	3.667
ORL	ORLANDO HERNDON	M	16	120037	329	537	1.632	56	17.0	2.667
PTK	PONTIAC	L	18	119590	328	768	2.341	121	36.9	6.722
DPA	CHICAGO DU PAGE	L	16	119219	327	669	2.040	135	41.3	6.750
POC	LA VERNE BRACKETT	M	16	116761	320	620	1.934	93	29.1	4.650
SEE	SAN DIEGO GILLESPI	M	16	115337	316	695	2.198	73	23.1	3.650
LOU	LOUISVILLE BOWMAN	M	16	114131	313	554	1.898	81	25.9	4.050
BJC	BROOMFIELD JEFFERSO	L	16	113669	311	562	1.807	40	12.5	2.105
PNE	NORTH PHILADELPHIA	L	24	112746	309	572	1.851	76	24.6	5.846
CRQ	CARLSBAD PALOMAR	M	15	108547	297	460	1.576	60	20.2	3.800
VRB	VERO BEACH	N	15	108192	296	498	1.682	73	24.7	3.650
AGC	PITTSBURGH ALLEGHEN	L	24	107898	296	634	2.142	90	30.4	7.500
HHR	HAWTHORNE	L	16	107411	294	412	1.401	98	33.3	5.444

TABLE 5 - ITINERANT AIRCRAFT OPERATION AT GENERAL AVIATION AIRPORT, FY 1976

LOCAL IDENT	LOCATION	HUB	DAILY HOURS OF OPNS	ANNUAL	AIRCRAFT AVERAGE DAY	OPERATIONS AVERAGE HOUR	PEAK DAY	RATIO OF PEAK/AVG DAY	BUSY HOUR UPNS	BUSY HOUR 0/0 OF AVG DAY	RATIO OF BUSY/AVG HOUR
FRG	FARMINGDALE	L	16	105316	289	18	635	2.211	60	20.9	3.333
TMB	TAMIAH	L	16	104741	287	18	548	1.909	69	24.0	3.833
EMT	EL MONTE	N	16	104261	286	18	529	1.850	60	21.0	3.333
APC	MAPA COUNTY	N	16	104082	285	18	468	1.642	30	10.5	1.667
MKC	KANSAS CITY MUNICIPAL	L	24	103922	285	12	466	1.635	34	11.9	2.833
PAO	PALO ALTO	N	16	102241	280	18	402	1.456	56	20.9	3.111
STS	SANTA ROSA SONOMA C	N	16	100747	276	17	575	2.083	106	38.4	6.235
FCM	MINNEAPOLIS FLYING	L	16	100720	276	17	552	2.030	88	31.9	5.176
FTY	ATLANTA FULTON COUN	L	16	99336	272	17	460	1.691	66	24.3	3.882
PHK	CHICAGO PALWAUKEE	L	16	98550	270	17	610	2.259	67	24.8	3.941
BAF	WESTFIELD	N	16	95946	263	16	821	3.122	92	35.0	5.750
UND	NORWOOD	L	16	95874	263	16	603	2.295	75	28.9	4.688
LNS	LANCASTER	S	16	95005	260	16	482	1.854	148	56.9	9.250
LUK	CINCINNATI LUNKEN	M	16	94680	259	16	556	2.147	80	30.9	5.000
HFD	HARTFORD BRAINARD	M	16	94292	258	16	546	2.124	81	31.4	5.063
BDR	BRIDGEPORT	N	16	93843	257	16	507	1.973	72	28.0	4.500
BVY	BEVERLY MUNICIPAL	L	16	92751	254	16	411	1.618	58	22.0	3.500
PIE	ST PETERSBURG CLEAR	L	16	92681	254	16	604	2.378	44	17.3	2.750
APA	DENVER ARAPAHOE COU	L	16	92111	252	16	757	3.004	92	36.5	5.750
STG	SAN JUAN ISLA GRAND	L	14	88829	243	17	540	2.222	77	31.7	4.529
ROG	READING	N	24	87491	240	10	591	2.463	73	30.4	7.300
OJC	ULATHE	N	16	84987	233	15	413	1.715	92	39.9	6.133
LVK	LIVERMORE MUNICIPAL	L	14	80925	222	16	345	1.554	55	26.0	3.688
HAR	HARRISBURG	S	24	79431	218	9	515	2.301	105	48.2	11.667
FXE	FORT LAUDERDALE EXE	L	16	77462	212	13	362	1.703	46	22.6	3.692
STP	ST PAUL	L	16	76964	211	13	475	2.210	40	19.0	3.077
SDL	SCOTTSDALE	H	16	75983	208	13	463	1.938	23	25.5	4.077
OSU	COLUMBUS DMHD ST	M	16	75547	207	13	446	2.155	63	30.4	4.846
PAE	EVERETT PAINE FIELD	N	16	75423	207	13	455	2.199	75	36.2	5.769
64	VOLUMES 75000 AND OVER		1110	7745033	21220	1226	41214	1.942	5471	25.8	4.462

TABLE 5 - ITINERANT AIRCRAFT OPERATION AT GENERAL AVIATION AIRPORT, FY 1970

LOCAL IDENT	LOCATION	HUB	DAILY HOURS OF UPNS	ANNUAL	AIRCRAFT AVERAGE DAY	AVERAGE HOUR	PEAK DAY	RATIO OF PEAK/AVG DAY	BUSY HOUR UPNS	BUSY HOUR O/U OF AVG DAY	RATIO OF BUSY/AVG HOUR
RAL	RIVERSIDE MUNICIPAL	S	10	74100	203	13	368	1.813	40	19.7	3.077
YIP	DETROIT WILLOW RUN	L	24	73215	201	8	411	2.045	65	32.3	8.125
HWO	HOLLYWOOD	L	16	72481	199	12	403	2.025	45	22.8	3.750
TTD	TROUTDALE	M	16	71715	196	12	366	1.959	50	25.5	4.167
MIC	MINNEAPOLIS CRYSTAL	L	16	71156	195	12	658	3.374	76	39.0	6.333
AKR	AKRON MUNICIPAL	S	24	70682	194	8	513	2.644	63	32.5	7.875
HIO	HILLSBORO	M	16	68863	189	12	458	2.423	81	42.9	6.750
SUS	ST LOUIS SPIRIT OF	L	16	68878	189	12	394	2.085	51	27.0	4.250
CND	CHINO	S	15	67581	185	12	454	2.870	68	36.8	5.667
FCH	FRESNO CHANDLER	S	15	66925	183	12	497	2.716	89	48.6	7.417
GGF	CLEVELAND CUYAHOGA	L	16	66140	181	11	376	2.088	17	9.6	1.545
GMU	GREENVILLE MUNICIPAL	S	16	64813	178	11	612	3.438	100	50.2	9.051
CGX	CHICAGO MEIGS	L	18	64507	175	15	311	1.777	49	27.7	4.900
CPS	EAST ST LOUIS BI ST	L	12	64053	175	11	301	1.720	59	33.7	3.933
RBD	DALLAS REDBIRD	L	16	63977	175	11	402	2.324	40	22.9	3.636
SFF	SPOKANE FELT'S FIELD	M	16	63276	173	11	367	1.876	48	27.7	4.364
PMP	POMPANO BEACH AIRPA	L	16	62505	171	11	307	1.795	31	18.4	2.818
DTN	SHREVEPORT DOWNTOWN	S	16	61851	169	11	317	1.876	56	33.1	5.091
SNS	SALINAS MUNICIPAL	S	16	61438	168	11	262	1.560	57	33.9	5.182
GDN	GROTON TRUMBULL	N	16	59167	162	10	547	3.377	77	47.5	7.700
HJF	LANCASTER FOX AIRPO	N	14	58856	161	12	414	2.571	52	32.3	4.333
SDM	SAN DIEGO BROWN FIE	M	15	58502	160	11	327	2.044	35	20.6	3.000
MIE	MUNCIE DELAWARE COU	N	16	57285	157	10	345	2.197	75	47.8	7.500
ALN	ALTON CIVIC MEMORIA	L	16	55808	153	10	364	1.987	76	49.7	7.600
MWC	MILWAUKEE TIMMERMAN	M	16	54680	150	9	337	2.247	34	22.7	3.778
KCK	KANSAS CITY FAIRFAX	L	16	54475	149	9	267	1.792	47	31.3	5.222
ARB	ANN ARBOR MUNICIPAL	L	16	54173	148	9	384	2.595	12	8.1	1.333
ARR	AURORA MUNICIPAL	L	13	51269	140	11	343	2.450	36	25.7	3.273
LAF	LAFAYETT PURDUE UNI	N	16	50398	138	9	356	2.580	84	60.9	9.333
ENA	KENAI MUNICIPAL	N	16	50061	137	9	260	1.896	51	37.2	5.667
HKS	JACKSON HAWKINS	S	16	50038	137	9	353	2.577	45	32.8	5.000
MFD	MANSFIELD LAHM MUNI	N	24	49903	137	6	307	2.241	41	25.9	6.833
RNT	RENTON	L	16	49752	136	9	409	3.007	56	41.2	6.222
CRG	CRAIG FIELD JACKSON	N	12	48314	132	11	286	2.167	53	40.2	4.818



TABLE 5 - ITINERANT AIRCRAFT OPERATION AT GENERAL AVIATION AIRPORT, FY 1976

LOCAL IDENT	LOCATION	HUB	DAILY HOURS OF OPNS	ANNUAL	AIRCRAFT AVERAGE DAY	OPERATIONS AVERAGE HOUR	PEAK DAY	RATIO OF PEAK/AVG DAY	BUSY HOUR OPNS	BUSY HOUR 0% OF AVG DAY	RATIO OF BUSY/AVG HOUR
SPG	ST PETERSBURG WHITT	L	16	47908	131	8	238	1.817	36	27.5	4.500
LHD	ANCHORAGE LAKE HOOD	M	16	47441	130	8	594	4.569	74	56.9	9.250
HUF	TERRE HAUTE	N	24	47168	129	5	275	2.163	62	48.1	12.400
HGR	HAGERSTOWN	L	16	46629	128	8	446	3.484	24	18.8	3.800
MWH	MOSES LAKE GRANT	N	16	46540	128	8	456	3.563	67	52.3	8.375
OLM	OLYMPIA	N	12	45947	126	11	302	2.397	53	42.1	4.818
DGD	OGDEN MUNICIPAL	N	16	45618	125	8	265	2.152	49	38.2	6.125
CLL	COLLEGE STATION	N	16	45114	124	8	253	2.046	25	20.2	3.125
TIM	TACOMA INDUSTRIAL	L	12	44969	123	10	311	2.528	50	40.7	5.000
MDH	CARBONDALE	N	12	44150	121	10	274	2.264	45	37.2	4.500
GYR	GOODYEAR	N	17	43394	119	7	263	2.210	19	16.0	2.714
SSF	SAN ANTONIO STINSON	M	16	41974	115	7	211	1.835	42	36.5	6.000
ALW	WALLA WALLA	N	14	40071	110	8	286	2.600	23	20.9	2.875
SPA	SPARTANBURG	S	16	38843	106	7	407	3.840	27	25.5	3.857
DKX	KNOXVILLE DOWNTOWN	S	14	38045	104	7	228	2.152	62	59.6	8.857
ATM	APPLETON	S	16	37033	101	6	355	3.515	73	72.3	12.167
POU	POUGHKEEPSIE DUTCHE	N	8	36160	99	12	273	2.758	49	49.5	4.083
ADM	ARDMORE MUNICIPAL	N	16	34608	95	6	205	2.200	29	30.5	4.833
PVM	PLAINVIEW MALE COUN	S	16	34448	94	5	775	8.287	40	42.6	6.667
OMB	OWENSBORO DAVLESS C	S	16	32796	90	6	164	1.822	28	31.1	4.667
EYN	KEY WEST	N	16	32736	90	6	149	1.656	22	24.4	3.667
BTL	BATTLE CREEK	S	24	32389	89	4	183	2.056	21	23.6	5.250
SAF	SANTA FE	N	24	32249	88	4	238	2.705	42	47.7	10.560
PMD	PALMDALE	N	16	29730	81	5	59	0.728	18	22.2	3.600
MYV	MARYSVILLE YUBA COU	N	13	28614	78	6	347	4.445	54	69.2	9.000
STJ	ST JOSEPH	N	16	28493	78	5	170	2.115	35	44.9	7.000
DNV	DANVILLE	N	12	23881	65	5	177	2.723	44	47.7	8.800
SSI	BRUNSWICK SAINT SIM	N	8	23305	64	8	136	2.125	26	40.6	3.250
MAZ	MAYAGUEZ	N	8	14998	41	5	65	1.565	15	36.6	3.000
TNT	MIAMI DADE COLLIER	N	12	2666	7	1	22	4.571	5	71.4	5.000
64	VOLUMES LESS THAN 75000		1008	3168774	8677	564	21340	2.455	3016	34.3	5.348

TABLE 6 - TOTAL AIRCRAFT OPERATION AT GENERAL AVIATION AIRPORT, FY 1976

LOCAL IDENT	LOCATION	HUB	DAILY HOURS OF OPNS	ANNUAL	AIRCRAFT OPERATIONS AVERAGE LAY	AVERAGE HOUR	PEAK DAY	RATIO OF PEAK/AVG DAY	BUSY HOUR OPS	BUSY HOUR G/D OF AVG DAY	RATIO OF BUSY/AVG HOUR
VNY	VAN NUYS	L	24	614355	1683	70	2506	1.465	318	16.9	4.543
TUA	TORRANCE MUNICIPAL	L	16	448233	1228	77	2060	1.678	289	23.3	3.753
OPF	OPA LOCKA	L	18	422262	1157	64	1532	1.670	228	15.7	3.563
HWJ	HAYWARD	L	15	392439	1075	67	1843	1.714	251	23.3	3.746
MYF	SAN DIEGO MONTGOMERY	M	15	358390	582	65	1554	1.562	217	24.3	3.369
BFI	SEATTLE BOEING	L	24	357899	981	41	2110	1.131	301	30.7	7.341
CCR	CONCORD	L	16	351726	964	60	1509	1.505	148	15.4	2.467
MRI	ANCHORAGE MERRILL	M	16	346224	949	59	1636	1.762	246	25.9	4.169
RHV	SAN JOSE REID HILLY	S	16	311267	853	53	1317	1.549	175	20.5	3.312
HOU	INDUSTON HDBBY	L	24	299758	821	34	1516	1.647	110	13.6	3.235
GPA	CHICAGO DU PAGE	L	16	292908	802	50	1559	1.524	239	29.0	4.780
FTW	FORT WORTH MEACHAM	L	16	283894	778	45	1320	1.657	206	26.3	4.204
PVS	TULSA RIVERSIDE	M	16	282326	773	48	1343	1.737	213	27.6	4.438
TMB	TAMiami	L	16	274974	753	47	1303	1.730	133	17.7	2.830
FCM	MINNEAPOLIS FLYING	L	16	269416	738	46	1531	1.675	225	31.0	4.978
PTK	PONTIAC	L	18	269287	738	41	1530	1.615	225	30.5	5.488
NEK	NEW ORLEANS LAKEFRU	L	24	269055	737	31	1265	1.716	187	25.4	6.032
APA	DENVER ARAPAHOE COU	L	16	268845	737	46	1632	2.244	173	23.3	3.761
SMU	SANTA MONICA	L	16	266474	730	46	1133	1.552	154	21.1	3.348
FUL	FULLERTON MUNICIPAL	L	17	253809	695	41	1057	1.521	125	18.0	3.049
LOU	LOUISVILLE BOWMAN	M	16	253330	694	43	1403	2.022	199	23.7	4.628
BED	BEDFORD	L	15	251350	689	43	1263	1.578	141	20.3	3.279
PDC	LA VERNE BRACKETT	N	16	245981	674	42	1054	1.643	148	22.0	3.524
PAU	PALO ALTO	N	16	242234	664	42	1029	1.550	114	17.2	2.714
SQL	SAN CARLOS	L	16	236947	649	41	1030	1.567	117	16.0	2.854
SEE	SAN DIEGO GILLESPI	M	16	233162	639	40	1175	1.845	140	21.9	3.500
SAC	SACRAMENTO EXECUTIV	S	24	233109	639	27	568	1.515	117	18.3	4.333
BJC	BROOMFIELD JEFFERSO	L	16	232038	636	40	1286	2.024	153	24.1	3.825
PTE	ST PETERSBURG CLEAR	L	16	230966	633	40	1018	1.608	157	24.8	3.925
PHK	CHICAGO PALHAUKEE	L	16	230839	632	40	1455	2.366	147	23.3	3.675
BVY	BEVERLY MUNICIPAL	L	16	229640	629	39	1470	2.337	198	31.5	5.077
APC	NAPA COUNTY	N	16	225460	618	35	1242	2.010	120	19.4	3.077
TEB	TETTERBORO	L	24	223718	613	26	1374	2.241	150	24.5	5.769
EMT	EL MONTE	N	16	222534	610	38	1043	1.710	132	21.6	3.474

TABLE 6 - TOTAL AIRCRAFT OPERATION AT GENERAL AVIATION AIRPORT, FY 1976

LOCAL IDENT	LOCATION	HUB	DAILY HOURS OF OPS	ANNUAL	AIRCRAFT OPERATIONS AVERAGE DAY	PEAK DAY	RATIO OF PEAK/AVG DAY	BUSY HOUR U/O OF AVG DAY	RATIO OF BUSY/AVG HOUR
QAD	NORWOOD	L	16	220830	605	1357	2.243	22.3	3.575
PDK	ATLANTA DEKALB PEAC	L	16	217436	599	1175	1.979	34.7	5.595
MH	MUSES LAKE GRANT	N	16	217248	595	1503	2.526	36.3	5.838
LJK	CINCINNATI LUNKEN	M	16	214776	588	1182	2.010	29.3	4.649
CPS	EAST ST LOUIS BI ST	L	12	206641	566	1103	1.945	25.1	3.821
FTY	ATLANTA FULTON COUN	L	16	204543	560	1079	1.927	30.0	4.800
FRG	FARMINGDALE	L	16	201945	553	1177	2.125	23.6	3.286
CRJ	CARLSBAD PALOMAR	M	15	199032	545	1016	1.846	25.7	3.889
AUS	DALLAS ADDISON	L	16	198339	543	976	1.797	22.1	3.529
PWA	OKLAHOMA CITY WILEY	M	16	197584	541	507	1.677	26.4	4.266
HMO	HOLLYWOOD	L	16	196830	539	552	1.582	26.5	4.206
HHP	HANTHORNE	L	16	195647	536	836	1.560	24.6	3.882
USU	COLUMBUS OHIO ST	M	16	194544	533	1335	2.512	25.3	4.727
DXR	DANBURY MUNICIPAL	N	16	193448	530	1524	2.875	41.3	6.667
FXE	FORT LAUDERDALE EXE	L	16	190629	522	541	1.063	26.0	4.242
PNE	NORTH PHILADELPHIA	L	24	189533	519	1024	1.972	19.6	3.639
LVK	LIVERMORE MUNICIPAL	L	14	183570	503	821	1.632	20.2	3.061
SDM	SAN DIEGO BROWN FIE	M	15	182558	500	1065	2.130	17.8	2.839
ORL	ORLANDO HERNDON	A	16	180566	495	811	1.638	32.6	7.714
AGC	PITTSBURGH ALLEGHEN	L	24	180304	494	550	1.113	16.6	3.476
MKC	KANSAS CITY MUNICIPAL	L	24	180086	493	848	1.716	26.2	4.452
TFD	TROUTDALE	M	16	178637	489	540	1.113	25.6	4.032
SOL	SCOTTSDALE	N	16	178045	488	822	1.684	33.2	5.226
MIC	MINNEAPOLIS CRYSTAL	L	16	177983	488	1360	2.800	24.2	3.344
VRB	VERO BEACH	N	15	176418	485	516	1.071	22.2	3.344
GND	CHINO	S	15	175587	481	1048	2.179	42.4	6.375
	VOLUMES		1026	14957558	40978	76475	1.866	24.3	4.088
	175000 AND OVER								



TABLE 6 - TOTAL AIRCRAFT OPERATION AT GENERAL AVIATION AIRPORT, FY 1976

LOCAL IDENT	LOCATION	HUB	DAILY HOURS OF OPNS	ANNUAL	AIRCRAFT AVERAGE DAY	OPERATIONS AVERAGE HOUR	PEAK DAY	RATIO OF PEAK/AVG DAY	BUSY HOUR UPNS	BUSY HOUR C/O OF AVG DAY	RATIO OF BUSY/AVG HOUR
BAF	WESTFIELD	N	16	174902	479	30	1124	2.347	136	26.4	4.533
PAE	EVERETT PAINE FIELD	N	16	173452	475	30	558	2.017	115	24.2	3.833
HFD	HARTFORD BRAINARD	M	16	170648	468	29	1084	2.316	204	43.6	7.034
YIP	DETROIT WILLOW RUN	L	24	169804	465	19	1123	2.415	186	40.0	9.789
BDR	BRIDGEPORT	N	16	166258	456	29	541	2.064	133	29.2	4.586
SIG	SAN JUAN ISLA GRAND	L	14	163335	447	32	651	1.855	112	25.1	3.500
ARR	AURORA MUNICIPAL	L	13	160354	439	34	1002	2.282	119	27.1	3.500
RBD	DALLAS REDBIRD	L	16	158160	433	27	814	1.880	155	36.7	5.889
OJC	DLATHE	N	16	157092	430	27	845	1.965	143	33.3	5.256
STS	SANTA ROSA SOMOMA C	N	16	156880	430	27	781	1.816	94	21.9	3.481
SUS	ST LOUIS SPIRIT OF	L	16	155735	427	27	819	1.918	146	34.2	5.407
LNS	LANCASTER	S	16	155009	425	27	764	1.798	168	39.5	6.222
HIO	HILLSBORO	M	16	153905	422	26	814	1.925	110	26.1	4.231
HAR	HARRISBURG	S	24	148788	408	17	766	1.877	145	35.5	8.529
STP	ST PAUL	L	16	146455	401	25	913	2.277	81	20.2	3.240
PMP	POMPANO BEACH AIRPA	L	16	145777	399	25	770	1.930	82	20.6	3.280
AKR	AKRON MUNICIPAL	S	24	143298	393	16	654	2.173	109	27.7	6.813
AKB	ANN ARBOR MUNICIPAL	L	16	141031	386	24	917	2.376	110	28.5	4.583
RDG	READING	N	24	140955	386	16	975	2.526	80	20.7	5.000
ALN	ALTON CIVIC MEMORIA	L	16	135864	372	23	802	2.156	132	35.5	5.739
MWC	MILWAUKEE TIMMERMAN	M	16	134781	369	23	767	2.079	86	23.3	3.739
RAL	RIVERSIDE MUNICIPAL	S	16	133936	367	23	660	1.798	132	36.0	5.739
SSF	SAN ANTONIO STINSON	M	16	133684	366	23	684	1.865	140	38.3	6.087
WJF	LANCASTER FOX AIRPO	N	14	133374	365	26	871	2.386	122	33.4	4.692
GYR	GOODYEAR	N	17	131914	361	21	718	1.595	74	20.5	3.524
LAF	LAFAYETT PURDUE UNI	N	16	130132	357	22	1045	2.938	148	41.5	6.727
KCK	KANSAS CITY FAIRFAX	L	16	128725	353	22	683	1.935	127	36.0	5.773
SFF	SPOKANE FELTS FIELD	M	16	123796	339	21	844	2.490	111	32.7	5.286
CGF	CLEVELAND CUYAHOGA	L	16	118525	325	20	508	1.563	97	29.8	4.850
DTN	SHREVEPORT DOWNTOWN	S	16	116933	320	20	634	1.981	126	39.4	6.300
MDH	CARBONDALE	S	12	115825	317	26	839	2.647	130	41.0	5.000
SNS	SALINAS MUNICIPAL	S	16	113237	310	19	708	2.284	114	36.8	6.080
RNT	RENTON	L	16	113002	310	19	626	2.019	110	35.5	5.789
GMU	GREENVILLE MUNICIPAL	S	16	107115	293	18	676	2.307	116	39.6	6.444

LOCAL IDENT	LOCATION	HUB	TOTAL AIRCRAFT OPERATION AT GENERAL AVIATION AIRPORT, FY 1976			PEAK DAY	PEAK DAY	RATIO OF PEAK/AVG DAY	BUSY HOUR	BUSY HOUR OPNS	-BUSY HOUR O/O OF AVG DAY	RATIO OF BUSY/AVG HOUR
			DAILY HOURS OF DPMS	ANNUAL	AVERAGE DAY							
UGD	OGDEN MUNICIPAL	N	16	103907	285	870	3.053	163	163	57.2	9.056	
ADM	ARDMORE MUNICIPAL	N	16	95675	262	813	3.103	109	109	41.6	6.813	
PHD	PALMDALE	N	16	91341	250	612	2.448	150	150	60.0	9.375	
GON	GROTON TRUMBULL	N	16	90022	247	633	2.563	95	95	38.5	6.333	
FCH	FRESNO CHANDLER	S	15	88536	243	761	3.132	124	124	51.0	7.750	
CLL	COLLEGE STATION	N	16	86691	238	539	2.265	15	15	28.6	4.533	
HKS	JACKSON HAWKINS	S	16	86564	237	476	2.068	68	68	41.8	6.600	
TIM	TACOMA INDUSTRIAL	L	12	85212	233	923	3.961	88	88	37.8	4.632	
SPG	ST PETERSBURG WHITT	L	16	85005	233	457	1.961	63	63	27.0	4.200	
CRG	CRAIG FIELD JACKSON	N	12	82954	227	520	2.251	108	108	47.6	5.684	
MFD	MANSFIELD LAHM MUNI	N	24	82711	227	735	3.236	88	88	38.8	9.378	
OLM	OLYMPIA	N	12	80095	219	561	2.288	79	79	36.1	4.389	
HUF	TERRE HAUTE	N	24	78542	215	471	2.191	91	91	42.3	10.111	
MIE	MUNCIE DELAWARE COU	N	16	77665	213	489	2.296	90	90	42.3	6.923	
HGR	HAGERSTOWN	L	16	75112	206	622	3.019	90	90	43.7	6.923	
STJ	ST JUSEPH	N	16	69636	191	421	2.204	73	73	38.2	6.083	
CGX	CHICAGO MEIGS	L	18	69435	190	450	2.579	63	63	33.2	5.727	
EYM	KEY WEST	N	16	68182	187	436	2.332	71	71	38.0	5.917	
ENA	KENAI MUNICIPAL	N	16	67602	185	471	2.546	92	92	49.7	7.667	
DKX	KNOXVILLE DOWNTOWN	S	14	66382	182	418	2.257	85	85	46.7	6.538	
ATM	APPLETON	S	16	63654	174	448	2.575	84	84	48.3	7.636	
SAP	SANTA FE	N	24	62518	171	371	2.170	82	82	48.0	11.714	
ALL	WALLA WALLA	N	14	62230	170	540	3.176	105	105	61.8	8.750	
SPA	SPARTANBURG	S	16	62115	170	348	2.041	52	52	30.6	4.727	
OWB	OWENSBORO DAVIESS C	S	16	61928	170	541	3.182	74	74	43.5	6.727	
BTL	BATTLE CREEK	S	24	59806	164	488	2.976	40	40	24.4	5.714	
LHD	ANCHORAGE LAKE HODD	M	16	58363	160	626	3.913	118	118	73.8	11.800	
POU	POUGHKEEPSIE DUTCHE	N	8	56826	156	567	3.635	103	103	60.0	5.150	
PVM	PLAINVIEW HALE COU	S	16	53879	148	837	5.655	59	59	39.9	6.556	
MYV	MARYSVILLE YUBA COU	N	13	50701	139	447	3.216	75	75	54.0	6.4818	
DNV	DANVILLE	N	12	34449	94	253	2.691	60	60	63.8	7.500	
SSI	BRUNSWICK SAINT SIM	N	8	27513	75	188	2.501	44	44	58.7	4.889	
TNT	MIAMI CADE COLLIER	N	12	19591	55	586	10.455	62	62	112.7	12.400	
MAZ	MAYAGUEZ	N	8	19223	53	148	2.792	35	35	66.0	5.000	
68	VOLUMES LESS THAN 175000		1092	7177146	19662	46210	2.350	7079	7079	36.0	5.723	

TABLE 7 - TOTAL INSTRUMENT OPERATION AT GENERAL AVIATION AIRPORT, FY 1976

LOCAL IDENT	LOCATION	HUB	DAILY HOURS OFC	ANNUAL OPERATIONS			AVG DAY INSTR OPS	PEAK DAY OPERATIONS			BUSY HOUR OPERATIONS				
				TOTAL	INSTR	O/C		ITIN	INSTR	O/C	ITIN	INSTR	O/C		
HAR	HARRISBURG	S	24	148788	79431	102502	68.5	125.0	281	5.5	570	109.8	103	57	54.3
HOU	HOUSTON HOBBY	L	24	299758	246904	102656	34.0	41.3	280	10.8	552	52.2	95	41	43.2
TEB	TETERBORG	L	24	223718	192212	42779	19.1	22.3	117	10.4	50	5.2	120	8	6.7
BFI	SEATTLE BOEING	L	24	357899	207394	41121	11.5	19.8	113	12.1	254	20.3	235	26	11.1
MKC	KANSAS CITY MUNICIPAL	L	24	180036	103922	37688	20.9	36.3	103	8.6	227	48.7	34	26	76.5
AGC	PITTSBURGH ALLEGHEN	L	24	180304	107898	34736	19.3	32.2	55	6.34	184	29.0	90	3	17.8
SAC	SACRAMENTO EXECUTIV	S	24	233109	168348	32003	13.7	19.0	88	8.13	288	33.8	86	36	41.9
PKK	ATLANTA DEKALB PEAC	L	16	217436	121320	31942	14.7	26.3	88	5.80	210	38.2	77	41	53.2
MFD	MANSFIELD LAHM MUNI	N	24	82711	49903	31104	37.6	62.3	85	5.07	183	59.6	41	21	51.2
HUF	TERRE HAUTE	N	24	78542	47168	29313	37.3	62.1	80	2.75	180	57.3	62	19	30.6
VNY	VAN NUYS	L	24	614355	332292	28570	4.7	8.6	78	12.14	322	21.3	188	43	22.9
FTY	ATLANTA FULTON COUN	L	16	204543	99336	27673	13.5	27.9	76	4.00	0	0.0	66	0	0.0
ORL	ORLANDO FERNDOGN	M	16	180566	120037	27002	15.0	22.5	74	5.37	221	41.2	20	12	21.4
MWH	MOSES LAKE GRANT	N	16	217248	46540	26642	12.3	57.2	73	4.94	180	39.5	67	34	50.7
YIP	DETROIT WILLOW RUN	L	24	169804	73215	26546	15.6	36.3	73	4.11	159	38.7	65	12	18.5
PIK	PONTIAC	L	18	269287	119590	26410	9.8	22.1	72	7.68	267	27.0	121	22	18.2
NEW	NEW ORLEANS LAKEFRO	L	24	269055	126924	26137	5.7	20.6	72	6.17	189	30.1	92	14	15.2
PKK	CHICAGO PALWAUKEE	L	16	230839	98550	25748	11.2	26.1	71	6.10	176	28.9	67	22	32.8
SHD	SANTA MONICA	L	16	266474	139442	24542	9.2	17.6	67	8.01	315	47.7	86	25	28.4
FUL	FULLERTON MUNICIPAL	L	17	253805	139311	23616	9.3	17.0	65	7.84	358	45.7	104	50	48.1
BED	BEDFORD	L	16	251350	136814	22470	8.9	16.4	62	8.21	145	17.7	139	22	16.2
LUK	CINCINNATI LUNKEN	M	16	214776	94680	21640	10.2	23.1	60	5.56	163	29.3	80	24	30.0
RDG	READING	N	24	140955	87491	21407	15.2	24.5	55	5.51	151	27.2	73	18	24.7
CGF	CLEVELAND CUYAHOGA	L	16	118525	66140	20615	17.4	31.2	56	3.78	55	26.2	17	36	211.8
MIE	MUNCIE DELAWARE COU	N	16	77665	57285	15113	24.6	33.4	52	3.45	116	33.8	75	19	25.3
ALN	ALTON CIVIC MEMORIA	L	16	135864	55808	19019	14.0	34.1	52	3.04	142	46.7	76	22	28.9
OSU	COLUMBUS OHIO ST	M	16	194544	75547	18799	9.7	24.9	52	4.46	156	35.0	63	31	49.2
SUS	ST LOUIS SPIRIT OF	L	16	155735	68878	18749	12.0	27.2	51	3.94	115	29.2	51	17	33.3
PNE	NORTH PHILADELPHIA	L	24	189533	112746	18317	9.7	16.2	50	3.72	126	22.0	76	21	27.6
PNA	OKLAHOMA CITY WILEY	M	16	197584	133147	17730	9.0	13.3	49	6.45	156	24.2	83	25	30.1
PAE	EVERETT PAINE FIELD	N	16	173452	75423	16398	9.5	21.7	45	4.55	113	24.8	75	9	12.0
LOU	LOUISVILLE BOWMAN	M	16	253330	114131	15986	6.3	14.0	44	5.54	111	18.7	81	23	28.4
PHD	PALMDALE	N	16	91341	29730	15368	17.0	52.4	43	5.9	107	181.4	18	20	111.1
CLL	COLLEGE STATION	N	16	86691	45114	15256	17.6	33.8	42	2.53	150	51.4	25	11	44.0



TABLE 7 - TOTAL INSTRUMENT OPERATION AT GENERAL AVIATION AIRFIELD, FY 1976

LOCAL IDENT	LOCATION	HUB	DAILY HOURS OF UPNS	ANNUAL OPERATIONS			AVG DAY INSTR UPNS	PEAK DAY OPERATIONS			BUSY HOUR OPERATIONS			INSTR O/O
				TOTAL	ITIN	INSTR O/C		TOTAL	ITIN	INSTR O/C	ITIN	INSTR	ITIN	
TOA	TORRANCE MUNICIPAL	L	16	448233	194116	3.3	40	520	209	22.5	97	56	57.7	
GMU	GREENVILLE MUNICIPAL	S	16	107115	64813	13.4	35	612	100	16.2	100	15	15.0	
DPA	CHICAGO DU PAGE	L	16	292908	119219	4.9	55	605	105	15.7	135	17	12.6	
STP	ST PAUL	L	16	146455	76984	9.5	38	475	156	32.6	40	27	67.5	
LNS	LANCASTER	S	16	155009	95005	9.0	38	482	108	22.4	148	27	18.2	
PIE	ST PETERSBURG CLEAR	L	16	230966	92751	6.0	38	411	100	24.2	58	19	33.9	
FTW	FORT WORTH MEACHAM	L	16	283894	131510	4.8	38	564	119	21.1	60	25	31.3	
POC	LA VERNE BRACKETT	N	16	245981	116761	5.6	38	620	156	25.2	93	52	55.9	
ADS	DALLAS ADDISON	L	16	198339	123709	6.8	37	922	135	25.9	63	15	23.8	
AKR	AKRON MUNICIPAL	S	24	143298	70682	5.4	37	513	85	16.6	63	16	25.4	
OPF	UPA LOCKA	L	18	422262	204548	3.2	37	760	125	19.0	37	23	26.4	
HHR	HAWTHORNE	L	16	195647	107411	6.3	34	412	174	42.2	58	30	36.7	
BAF	WESTFIELD	N	16	174902	95946	7.0	33	421	77	5.4	92	14	15.2	
BTL	BATTLE CREEK	S	24	59806	32389	20.2	33	183	65	42.4	21	11	52.4	
GRQ	CARLSBAD PALOMAR	M	15	199032	108547	6.0	32	466	50	8.1	60	2	3.3	
RAL	RIVERSIDE MUNICIPAL	S	16	133936	74100	8.8	32	368	125	35.1	40	31	77.5	
BDR	BRIDGEPORT	N	16	166258	93843	7.0	32	507	161	15.5	72	12	16.7	
CGX	CHICAGO MEIGS	L	18	69435	64507	16.1	31	470	152	27.7	49	41	83.7	
ATM	APPLETON	S	16	63654	37033	17.3	30	525	71	20.0	73	18	44.7	
STS	SANTA ROSA SONOMA C	N	16	156380	100747	7.0	30	575	115	20.0	105	21	19.8	
FRG	FARMINGDALE	L	16	201845	105316	5.4	30	635	129	15.6	60	10	16.7	
LAF	LAFAYETT PURDUE UNI	N	16	130132	50398	6.3	30	350	71	19.5	84	15	17.9	
HWD	HAYWARD	L	16	392439	168861	2.7	29	742	118	15.8	96	14	14.6	
APC	NAPA COUNTY	N	16	225466	104087	4.5	26	476	60	16.4	50	7	23.3	
58	VOLUMES 10000 AND OVER		1062	11603562	6205969	11.1	3551	50150	5366	29.2	4651	1347	29.1	

TABLE 7 - TOTAL INSTRUMENT OPERATION AT GENERAL AVIATION AIRPORT, FY 1976

LOCAL IDENT	LOCATION	HUB	DAILY HOURS OF OPNS	ANNUAL OPERATIONS			AVERAGE DAY INSTR OPNS	PEAK DAY OPERATIONS			BUSY HOUR OPERATIONS				
				TOTAL	ITIN	INSTR		INSTR O/C	ITIN	INSTR	ITIN	INSTR	ITIN	INSTR	
STJ	ST JOSEPH	N	16	696.36	28493	5754	14.0	34.2	27	170	61	47.0	35	15	42.9
OJC	OLATHE	N	16	1570.92	84987	9390	6.0	11.0	26	413	80	20.6	52	15	16.3
EMT	EL MONTE	N	16	2225.34	104261	9378	4.2	9.0	26	525	143	27.0	60	36	60.0
OMB	OMENSBORO DAVIESS C	S	16	619.28	32796	9341	15.1	28.5	26	164	57	34.8	28	12	42.9
FCH	MINNEAPOLIS FLYING	L	16	2694.16	100720	9223	3.4	9.2	25	522	121	21.9	88	21	23.9
HKS	JACKSON HAWKINS	S	16	865.64	50038	8982	10.4	18.0	25	322	70	19.8	45	12	26.7
SNS	SALINAS MUNICIPAL	S	16	1132.37	61438	8601	7.6	14.0	24	222	92	35.1	57	21	36.8
EYM	KEY WEST	N	16	681.02	32736	8587	12.6	26.2	24	145	59	39.6	22	9	40.9
OLM	OLYMPIA	N	12	800.95	45947	8310	10.4	18.1	23	302	57	18.9	53	18	34.0
HGR	HAGERSTOWN	L	16	7511.2	46629	8207	10.9	17.6	22	446	5	1.1	24	2	8.3
CCR	COMCORD	L	16	3517.26	142684	8133	2.3	5.7	22	280	59	14.6	68	8	11.8
MYF	SAN DIEGO MONTGOMER	M	15	3583.90	141306	8132	2.3	5.8	22	1013	161	15.8	140	25	17.9
DTN	SHREVEPORT DOWNTOWN	S	16	1169.33	61851	7648	6.7	12.7	22	317	65	20.5	56	10	17.9
HID	HILLSBORO	M	16	1539.05	68883	7506	4.9	10.9	21	458	50	10.9	81	12	14.8
ENA	KENAI MUNICIPAL	N	16	676.02	50061	7188	10.6	14.4	20	260	59	38.1	51	22	43.1
GON	GRUTON TRUMBULL	N	16	900.22	59167	7148	7.9	12.1	20	547	5	1.1	77	8	10.4
TNT	MIAMI DADE COLLIER	N	12	199.91	2666	6717	33.6	252.0	18	32	133	415.8	5	25	500.0
MWC	MILWAUKEE TIMMERMAN	M	16	1347.81	54680	6694	5.0	12.2	18	337	67	19.9	34	7	20.6
VRB	VERO BEACH	N	15	1764.18	108192	6648	3.8	6.1	18	458	65	13.1	73	12	16.4
SPA	SPARTANBURG	S	16	6211.5	38843	6509	10.5	16.8	18	407	61	15.0	27	5	18.5
OMD	NOKWOOD	L	16	2208.80	95874	6474	2.5	6.8	18	805	61	10.1	75	9	12.0
TIM	TACOMA INDUSTRIAL	L	12	852.12	44969	6470	7.6	14.4	18	311	24	7.7	50	0	0.0
HFD	HARTFORD BRAINARD	M	16	1706.48	94292	6422	3.8	6.8	18	548	68	12.4	81	12	14.8
RVS	TULSA RIVERSIDE	M	16	2823.26	146382	6321	2.2	4.3	17	711	68	12.4	67	12	13.8
FXE	FORT LAUDERDALE EXE	L	16	1906.29	77462	6030	3.2	7.8	17	362	37	16.2	48	9	18.8
CRG	CRAIG FIELD JACKSON	N	12	824.94	48314	5642	6.8	11.7	15	286	53	18.5	53	11	20.8
CNO	CHINO	S	15	1755.87	67581	5575	3.2	8.3	15	454	105	21.3	58	48	70.6
DNV	DANVILLE	M	12	344.49	23891	5512	16.0	23.1	15	177	40	22.6	44	8	18.2
MRI	ANCHORAGE MERRILL	M	16	3462.24	167654	5511	1.6	3.2	15	652	121	13.6	105	18	17.1
MIC	MINNEAPOLIS CRYSTAL	L	16	1779.83	71156	5273	3.0	7.4	14	658	61	9.3	76	14	18.4
ARB	ANN ARBOR MUNICIPAL	L	16	1410.31	54173	5185	3.7	9.6	14	364	56	14.6	12	10	83.3
SSI	BRUNSWICK SAINT SIM	N	8	275.13	23305	4869	17.7	20.9	13	136	70	51.5	26	13	50.0
TMB	TAMIAMI	L	16	2749.74	104741	4768	1.7	4.6	13	948	32	5.8	59	7	18.1
KCK	KANSAS CITY FAIRFAX	L	16	1287.25	54475	4713	3.7	8.7	13	367	47	17.6	47	5	10.6

TABLE 7 - TOTAL INSTRUMENT OPERATION AT GENERAL AVIATION AIRPORT, FY 1976

LOCAL AGENT	LOCATION	HUB	OPNS	DA LY HOURS	ANNUAL OPERATIONS			PEAK DAY OPERATIONS			BUSY HOUR OPERATIONS			INSTR C/GC		
					TOTAL	INSTR	ITIN	TOTAL	INSTR	ITIN	TOTAL	INSTR	ITIN	TOTAL	INSTR	ITIN
SEE	SAN DIEGO GILLESPI	M	16	233162	115337	4702	2.0	4.1	13	622	49	7.1	73	7	9.6	
DKX	KNOXVILLE DOWNTOWN	S	14	503382	28045	4552	6.9	12.1	13	223	42	16.4	62	9	14.5	
FCH	FRESNO CHANDLER	S	15	86536	6925	4503	5.1	6.7	12	115	115	23.9	89	25	25.8	
BVY	BEVERLY MUNICIPAL	L	16	227040	93389	4454	1.9	4.8	12	116	47	4.0	150	9	6.0	
DKR	DANBURY MUNICIPAL	N	15	193448	5211	4293	2.2	4.7	12	77	38	9.0	72	8	8.7	
APA	DENVER ARAPAHO COU	L	16	263845	9281	4101	1.5	4.4	11	65	43	7.1	44	10	22.7	
CPS	EAST ST LOUIS BI ST	L	12	206641	64053	4076	2.0	6.4	11	311	52	16.7	59	17	29.8	
ALW	WALLA WALLA	N	14	62230	40071	3566	6.4	9.5	11	28	46	16.1	23	5	21.7	
MXI	CARBONDALE	N	12	115825	44150	5960	3.4	9.0	11	24	53	19.3	45	10	22.2	
RHW	SAN JOSE REID HILLY	S	15	311267	127290	3825	1.2	3.0	10	628	145	21.4	42	49	59.8	
TTD	TROUTDALE	M	16	178037	71715	3811	2.1	5.3	10	156	43	11.1	50	8	16.0	
POU	PUGHKEEPSIE DUTCHE	N	3	56826	36150	3788	6.7	10.5	10	243	42	15.4	49	14	28.6	
UGD	OGDEN MUNICIPAL	N	16	103907	45618	3703	3.6	8.1	10	27	75	27.9	49	12	24.5	
PWP	PUMPHANO BEACH AIRPA	L	16	145777	62505	3532	2.4	5.7	10	107	47	13.3	41	4	12.9	
MVY	MARYSVILLE YUBA COU	N	13	50701	28814	3442	6.8	12.0	9	147	42	12.1	54	12	22.2	
PAD	PALO ALTO	N	16	242234	102241	3123	1.2	3.1	8	462	108	26.9	59	56	100.0	
SOL	SAN CARLOS	L	16	236947	121777	3051	1.3	2.5	8	548	91	16.8	55	24	43.6	
RNT	RENTON	L	16	113032	45752	2560	2.6	5.9	6	489	26	6.6	36	5	16.1	
SFF	SFOKANE FELTS FIELD	M	16	123756	63276	2934	2.4	4.6	8	482	27	6.7	48	10	20.8	
ARR	AURORA MUNICIPAL	L	13	160354	51269	2521	1.8	5.7	8	343	28	8.2	36	7	19.4	
RBJ	DALLAS REDBIRD	L	16	158160	63977	2825	1.7	4.1	7	54	38	12.6	43	10	25.0	
SAP	SANTA FE	N	24	62518	32249	2367	3.8	7.4	7	23	30	12.8	42	10	23.8	
SPG	ST PETERSBURG WHITT	L	16	35005	47908	2248	2.6	4.7	6	234	23	11.8	36	10	27.8	
SOL	SCOTTSDALE	N	16	178045	75983	1956	1.1	2.6	5	413	30	7.4	53	17	32.1	
BJC	BROOMFIELD JEFFERSO	L	16	232036	113669	1527	0.8	1.7	5	242	22	3.9	40	6	20.0	
LVK	LIVERMORE MUNICIPAL	L	14	183570	80925	1487	0.8	1.8	4	343	21	6.1	54	6	10.2	
SSF	SAN ANTONIO STINSON	M	16	133584	41974	1483	1.1	2.5	4	211	22	10.4	42	10	23.8	
ADM	ARDMORE MUNICIPAL	N	16	95675	34608	1345	1.4	3.9	4	105	21	10.0	29	6	29.7	
PVM	PLAINVIEW MALE COUN	S	16	53879	34448	1218	2.3	3.5	3	775	27	3.9	40	12	30.0	
WJF	LANCASTER FOX AIRPO	N	14	133374	58956	1170	0.9	2.0	3	414	14	3.4	52	2	3.8	
MAZ	MAYAGUEZ	N	8	19223	14998	1048	5.5	7.0	3	65	21	32.3	15	7	46.7	
SOM	SAN DIEGO BROWN FI	M	15	182558	58502	969	0.5	1.7	3	527	34	10.4	33	7	21.2	
GYR	GOODYEAR	N	17	131914	43334	889	0.7	2.0	2	203	42	10.0	19	3	15.8	
HWC	HULLYMOOD	L	16	196830	72481	751	0.4	1.1	2	403	32	7.5	45	9	20.0	



