



US006935214B2

(12) **United States Patent**  
**Korpi**

(10) **Patent No.:** **US 6,935,214 B2**  
(45) **Date of Patent:** **Aug. 30, 2005**

(54) **NOBACK BOLT**

(75) Inventor: **John G. Korpi**, Livonia, MI (US)

(73) Assignee: **The United States of America as represented by the Secretary of the Army**, Washington, DC (US)

(\*) Notice: Subject to any disclaimer, the term of this patent is extended or adjusted under 35 U.S.C. 154(b) by 78 days.

(21) Appl. No.: **10/392,485**

(22) Filed: **Mar. 19, 2003**

(65) **Prior Publication Data**

US 2004/0182206 A1 Sep. 23, 2004

(51) **Int. Cl.**<sup>7</sup> ..... **B25B 13/06**

(52) **U.S. Cl.** ..... **81/121.1; 81/436**

(58) **Field of Search** ..... 81/121.1, 436, 81/442, 448, 451, 452, 461, 125, 121; 411/910, 911, 402, 403, 407, 399

(56) **References Cited**

U.S. PATENT DOCUMENTS

817,090 A \* 4/1906 Pfeiffer ..... 36/67 C

1,936,769 A	*	11/1933	Olivet	.....	16/381
2,459,610 A	*	1/1949	Zadina	.....	36/59 R
3,423,855 A	*	1/1969	Kosono	.....	36/67 R
5,120,168 A	*	6/1992	Padula	.....	411/5
5,410,823 A	*	5/1995	Iyoob	.....	36/127
5,451,124 A	*	9/1995	Meigs	.....	411/436
6,161,456 A	*	12/2000	Langford	.....	81/451

\* cited by examiner

*Primary Examiner*—Derris H. Banks

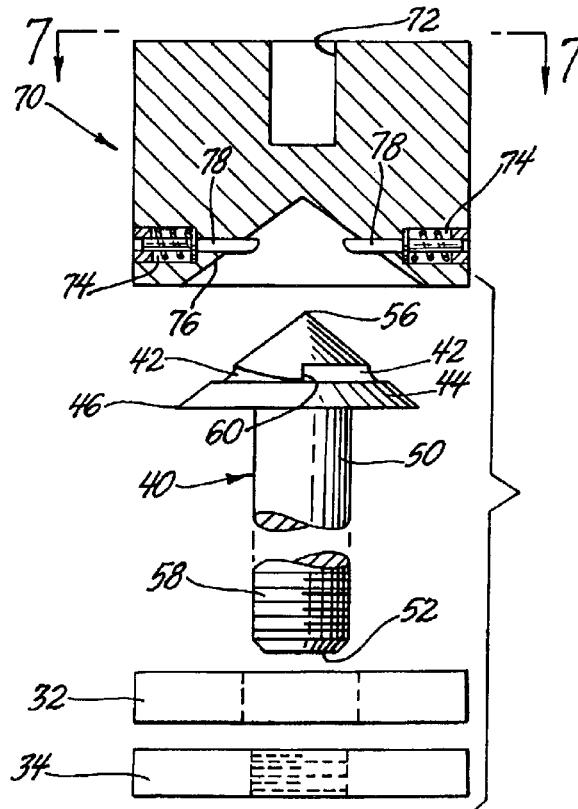
*Assistant Examiner*—J Williams

(74) *Attorney, Agent, or Firm*—David L. Kuhn; Luis Miguel Acosta; Thomas W. Saur

(57) **ABSTRACT**

There is described and claimed herein a noback bolt design which comprises an elongated shaft having two opposing ends. The first end has an enlarged conical bolt head that extends from this shaft. On the opposite shaft end is a terminus or tip. Between the tip and the conical head, the shaft bears an externally threaded segment on at least a portion of the shaft. The precise length of this segment is determined upon intended applications of my bolt, and the type or exact number of structural components to be assembled. These components include panels, brackets, planar surfaces, chassises, and like structures.

**7 Claims, 2 Drawing Sheets**

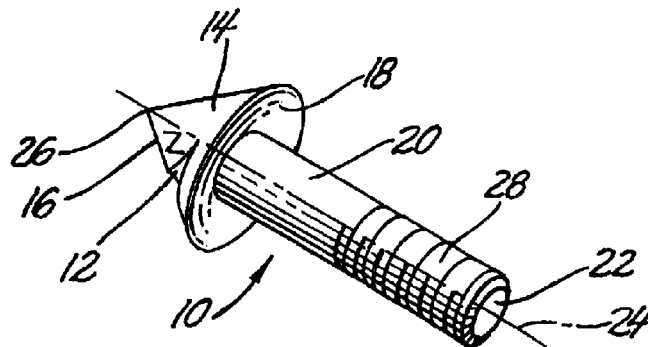
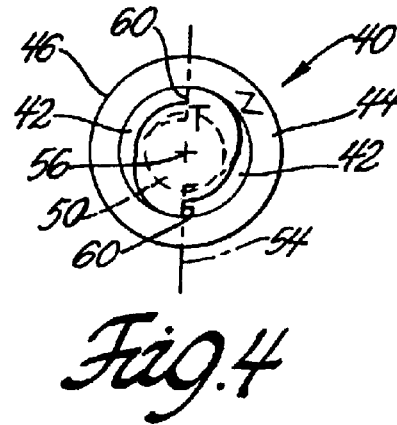
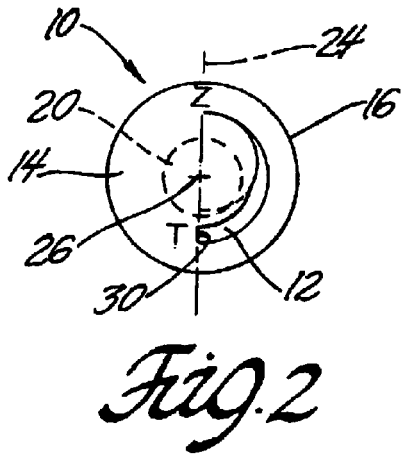
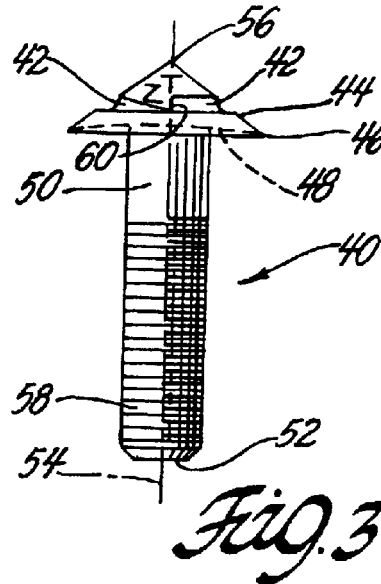
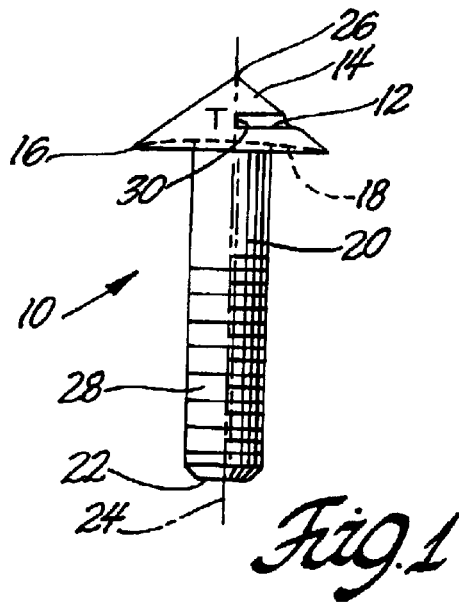


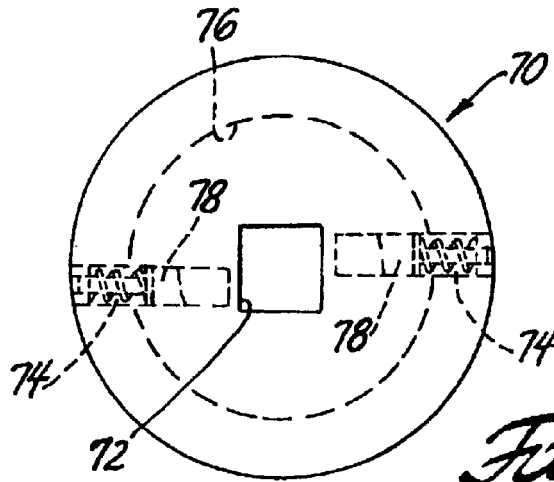
# Report Documentation Page

*Form Approved*  
*OMB No. 0704-0188*

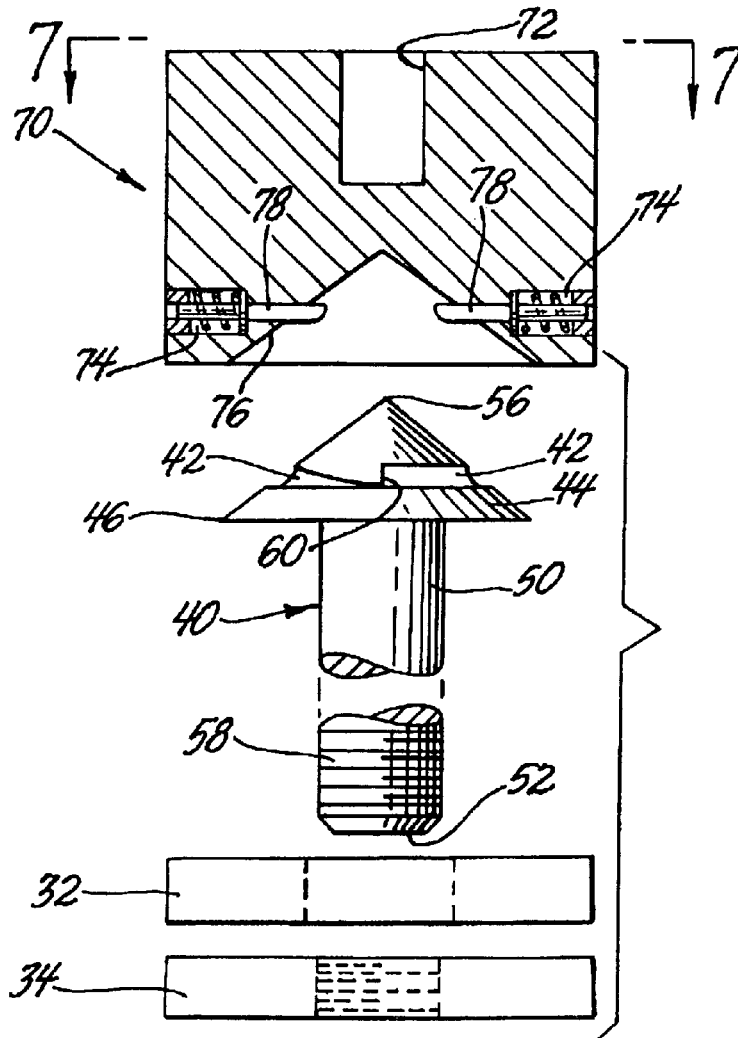
Public reporting burden for the collection of information is estimated to average 1 hour per response, including the time for reviewing instructions, searching existing data sources, gathering and maintaining the data needed, and completing and reviewing the collection of information. Send comments regarding this burden estimate or any other aspect of this collection of information, including suggestions for reducing this burden, to Washington Headquarters Services, Directorate for Information Operations and Reports, 1215 Jefferson Davis Highway, Suite 1204, Arlington VA 22202-4302. Respondents should be aware that notwithstanding any other provision of law, no person shall be subject to a penalty for failing to comply with a collection of information if it does not display a currently valid OMB control number.

1. REPORT DATE <b>30 AUG 2005</b>	2. REPORT TYPE <b>N/A</b>	3. DATES COVERED <b>-</b>			
4. TITLE AND SUBTITLE <b>Noback Belt</b>		5a. CONTRACT NUMBER			
		5b. GRANT NUMBER			
		5c. PROGRAM ELEMENT NUMBER			
6. AUTHOR(S) <b>John G. Korpi</b>		5d. PROJECT NUMBER			
		5e. TASK NUMBER			
		5f. WORK UNIT NUMBER			
7. PERFORMING ORGANIZATION NAME(S) AND ADDRESS(ES) <b>US Army RDECOM-TARDEC 6501 E 11 Mile Rd Warren, MI 48397-5000</b>		8. PERFORMING ORGANIZATION REPORT NUMBER <b>18737</b>			
9. SPONSORING/MONITORING AGENCY NAME(S) AND ADDRESS(ES)		10. SPONSOR/MONITOR'S ACRONYM(S) <b>TACOM/TARDEC</b>			
		11. SPONSOR/MONITOR'S REPORT NUMBER(S) <b>18737</b>			
12. DISTRIBUTION/AVAILABILITY STATEMENT <b>Approved for public release, distribution unlimited</b>					
13. SUPPLEMENTARY NOTES <b>United States Patent No.: US 6,935,214 B2</b>					
14. ABSTRACT					
15. SUBJECT TERMS					
16. SECURITY CLASSIFICATION OF:			17. LIMITATION OF ABSTRACT <b>SAR</b>	18. NUMBER OF PAGES <b>5</b>	19a. NAME OF RESPONSIBLE PERSON
a. REPORT <b>unclassified</b>	b. ABSTRACT <b>unclassified</b>	c. THIS PAGE <b>unclassified</b>			





*Fig. 7*



.6

1

**NOBACK BOLT****GOVERNMENT INTEREST**

The invention described herein may be made, used, and licensed by, or for, the United States Government for governmental purposes without paying any royalty.

**BACKGROUND AND SUMMARY**

The present invention generally relates to fasteners, such as a screw or bolt, which hold together one or more structural components in a strong, secured fashion. In another aspect, it also relates to non-removable or tamper-resistant fasteners. A special driving tool is also provided herein for the advancement of said fastener into said components.

Described herein is my noback bolt design comprising an elongated shaft having two opposing ends. The first end has an enlarged conical bolt head that extends from this shaft. On the opposite shaft end is a terminus or tip. Between the tip and the conical head, the shaft bears an externally threaded segment on at least a portion of the shaft. The precise length of this segment is determined upon intended applications of my bolt, and the type or exact number of structural components to be assembled. These components include panels, brackets, planar surfaces, chassis, and like structures.

The absence of a standard tool engaging surface on this conical head deters tampering or removal by traditional tools. Furthermore, this bolt is readily installed within one or more structural components to complete an assembly of constructs or workpieces with my aforementioned tool. However, once my noback bolt achieves a predetermined level of tightness, it is not readily removed without extraordinary efforts. Moreover, the noback bolt assures that a strong, mechanical bond or interlock is maintained in all assembled constructs or workpieces. Preferably, at least one of the components being joined together will have a compatible, internally threaded aperture or blind bore for acceptance of the threaded segment of my bolt. Also, at least one component must have a firm bearing surface upon which the underside of my bolt head will ultimately rest.

In the prior art, an ordinary bolt comprises an elongated, externally threaded shaft that longitudinally extends from a hex- or slot-shaped head. Such a bolt is usually positioned in a structural member by simply turning or rotating the head with a standard wrench or screwdriver in either a clockwise, or counterclockwise, direction depending on whether said bolt is being tightened or loosened, respectively.

In sharp contrast, my noback bolt is intended to turn in only a single direction (clockwise) and that is for the sole purpose of tightening said bolt against one or more structural components to make a completed assembly. Thus, for all practical purposes, an installed noback bolt is not removable and the joined constructs or workpieces are permanent. Examples of typical applications include plates of uparmor which can be added to legacy military vehicles to either modernize or upgrade their utility and missions. Similar applications exist within the appliance, automotive, aviation, and related industries of mass production, which prefer, or even mandate, nearly permanent or tamper resistant constructs for safety reasons.

**BRIEF DESCRIPTION OF DRAWINGS**

FIG. 1 is a front view of a first embodiment of my noback bolt.

2

FIG. 2 is a top view of FIG. 1.

FIG. 3 is a front view of a second embodiment of my noback bolt.

FIG. 4 is a top view of FIG. 3.

FIG. 5 is a perspective view of FIG. 1 showing the concave underside of the head of FIG. 1.

FIG. 6 is an exploded front view in partial section, of my special tool engaging the noback bolt of FIG. 3.

FIG. 7 is a top view of my special driving tool.

**DETAILED DESCRIPTION**

In the drawings, two equally satisfactory embodiments **10**, **40** of my invention are depicted. FIG. 1 shows a first embodiment **10** of my noback bolt in side elevation with a single arcuate slot **12** contained within an enlarged, conical bolt head **16**. Extending from the underside **18** of said head is an elongated shaft **20** that terminates at a tip **22** distal from the head. This shaft has a common central axis **24** with the apex **26** of the conical bolt head. At least a part of said elongated shaft **20** bears external threads **28** thereon. Depending on a specific application or need, the threads on this elongated shaft may extend for the full length of the shaft. Moreover, the shapes or sizes of the noback bolt may be of varying lengths and diameters. Further, while a coarse thread is depicted in FIG. 1; it could just as easily be a fine thread based upon the type of final assembly in which it is employed. FIG. 2 is a top view of the conical bolt **10** of FIG. 1 with a singular slot **12** embedded within the conical surface **14**.

FIG. 5 is a view in perspective showing a scooped-out underside **18** of the conical bolt head **16** of FIG. 1 in greater detail. While not shown, my second embodiment **40** has a similar underside **48** in its bolt head **46**. With specific reference to FIGS. 1, 3, and 5, the bolt heads **16** and **46** have a concave undersurface **18** or **48** that provides an extremely tight and secure joint between the bolt and the construct(s) or workpiece(s) whenever a bolt is tightly torqued into an assembled or installed position. The benefits of this design is further exemplified in my FIG. 6 wherein an assembly of two representative structural elements **32** (a panel having a threaded or unthreaded aperture) and **34** (a planar surface having a blind, internally threaded bore) are depicted using my noback bolt. When installed, the underside of my bolt head will preclude any attempt to loosen or remove it by either prying or lifting on said bolt head. In fact, this bolt will tightly abut, or even bite into, the surface of the top bearing surface of structural panel **32**.

FIGS. 3 and 4 depict a double slotted embodiment **40** of my invention which is comprised of two, equally spaced apart arcuate slots **42**. Each of my embodiments **10**, **40** has a cone-shaped head **16**, **46** that is designed to prevent gripping of the conical surfaces **14**, **44** with ordinary tools, or by the use of traditional gripper tools like a pipe wrench or pliers. Further, these heads may be treated by any of the conventional processes known to the art which will additionally enhance and/or harden these surfaces to preclude the potential for scratching, marring, and/or gripping of these bolt heads **16**, **46**.

The sole means for tightening my noback bolt is generally shown in FIGS. 6 and 7 which are depictions of my driving tool **70**. This tool appears therein as a standard, socket-like device that can be manufactured by conventional methods, such as machining, stamping, or casting. This tool is readily used with an ordinary socket wrench, ratchet, or driver which has a dimensionally compatible square-drive that fits

within a first drive means **72** on top of my tool **70**. This tool can also be further modified with the permanent, or detachable, addition of a "T" or "L" shaped handle. In these latter configurations, the modified tool will resemble a spark-plug wrench or a tire iron, respectively.

Generally, my tool **70** has an internal conical cavity **76** that begins as a central bore a short distance at its bottom, and then extends to a point remote from the top and near the first drive means **72**. This cavity **76** is dimensionally sized and shaped to receive, and then conform with, the exterior conical surface of bolt head(s) **16, 46**. Upon initial contact with a bolt head, the tool's second drive means **78** will engage the exterior conical surface(s) **14, 44** of said bolt, and then move directly away from the apex(es) **26, 56**. After the tool's second drive means **78** engage the arcuate slot(s) **12, 42** within the heads of my noback bolts, said heads are easily advanced into the structural components **32, 34** to form a completed installation or assembly. Thereby, a mating engagement of the driving tool **70** with the slots **12, 42** and conical bolt heads **16, 46** will allow the manual application of sufficient forces to controllably position, install, and advance the bolt to perform work (rotation of said bolts) in a tightening direction.

In a preferred embodiment, my tool's second drive means **78** comprises two projections within the conical cavity **76** of my tool **70**, which are interiorly positioned within bore(s) **74**, equally spaced-apart, and spring-loaded or spring-biased. These spring-actuated projections are preferably selected from inserts, posts, pins, or detents that will readily deploy into arcuate slot(s) **12, 42** of the conical bolt head(s) **16, 46** when my tool **70** is placed over said bolts and rotated. As this version of my tool slides over the conical bolt head, the detents or posts will be initially forced back by the smooth, conical surface of the bolt head. As the tool **70** is then turned in the tightening direction at its fully seated depth on said bolt, these projections will fully engage the arcuate slot(s) of the bolt head and will rotate to a maximum slot depth until the land(s) or shoulder(s) **30, 60** are contacted. Thusly positioned, the subsequent rotating of this tool **70** will result in a desired degree of tightening of the bolt head to the surfaces of the workpiece(s) to be joined together by my noback bolt. Because the slots **12, 42**, in the bolt heads **16, 46**, are offset from the cone apexes **26, 56**, and from the common axis(es) **24, 54** of both the conical head and the bolt shaft, the projections **78** of my preferred tool must be spring-actuated to accomplish their desired function. Those skilled in the art are familiar with acceptable substitutes and equivalents.

Referring back to FIG. **2** or **4**, an arcuate slot **12** or **42** is essentially a semicircular element in design. It is generally offset from the apex **26** or **56**, offset from the common axis **24** or **54** of the bolt head **16** or **46**, and offset from the bolt shafts **20, 50**, respectively, of my noback bolts. Moreover, the depth of these slots in my bolt(s) gradually increases from zero Z at the conical surface(s) **14** or **44** to a maximum depth at a point along the conical surface of about 180 degrees while traveling in a clockwise direction. At the termination T of the slot(s), and at their maximum width and depth, a land or shoulder **30** or **60** is provided therein for interfacing with both my special tool **70** and preferred drive means **78** for driving the conical bolt head. The internal surface(s) of the arcuate slots **12, 42** are also curved to provide a smooth and gradual transition from the exterior, conical surface(s) **14, 44** at the point Z of my noback bolt head to a maximum width and depth T at the land(s) **30** or **60**. This unique feature of the slots also precludes the

application and use of my driving tool **70** in the reverse (loosening) direction.

I wish it understood that I do not desire to be limited to the exact details of construction or method shown herein since obvious modifications will occur to those skilled in the relevant arts without departing from the spirit and scope of the following claims.

What is claimed is:

**1.** A noback bolt of unitary structural design comprising:

- a. an enlarged truncated conical head having an apex and a concave underside;
- b. an elongated shaft carrying external threads on at least a portion thereof extending from the concave underside of said head;
- c. a tapered tip opposite of said head and at the end of said shaft;
- d. a common central axis longitudinally extending from said head to said tip; and
- e. a receiving and engaging means embedded within said head for conformably accepting a driving tool having a compatible annular profile for said bolt head with a drive means positioned therein for inserting and advancing said bolt into a workpiece when a driving force is essentially applied to the bolt head along said common central axis, said receiving and engaging means comprising at least one arcuate slot embedded within the surface of said head, said slot being off-center from the common central axis of said shaft, and off-center from said apex and said concave underside of said conical head, said slot beginning at the conical surface and progressively increasing in depth along an arcuate, rounded bottom for about 180 degrees and ending in a stop adapted to be engaged by said driving tool, said slot being capable of conformably receiving and engaging said driving means of the driving tool when said tool is turned.

**2.** The noback bolt of claim **1** having two arcuate slots embedded within said head, each slot extending for about 180 degrees.

**3.** A driving tool comprising a cylindrical housing having top and bore ends, a centered, first drive means positioned within the top of said tool, and a second drive means positioned within a central internal bore formed within said bore end, said internal bore of said tool having a gradually tapered inward profile to therein form a conical cavity that is complimentary with the conical bolt head surface said second drive means comprising at least two spring loaded projections positioned within said gradually tapered profile, said projections offset from said top and said bore end, and also offset from a longitudinal central axis extending through said tool, said projections capable of engaging the arcuate slots of a noback bolt for inserting and driving said bolt into one or more workpieces with said tool by application of a rotating force along the longitudinal central axis of said tool.

**4.** The tool of claim **3** wherein said spring loaded projections are selected from the group consisting of pins, posts, detents, and inserts.

**5.** The tool of claim **3** wherein said projections are circumferentially spaced apart.

**6.** The tool of claim **3** wherein the first driving means is a dimensionally sized and shaped aperture that receives a common socket wrench or ratchet.

**7.** The tool of claim **6** which turns in only one direction.