

Mixing by Tidal Interaction with Sloping Boundaries

Sonya Legg
Mail Stop 21
Department of Physical Oceanography
Woods Hole Oceanographic Institution
Woods Hole, MA 02543.
Tel: 508-289-2801 Fax: 508-457-2181 E-mail: slegg@whoi.edu

Grant Number: N00014-98-1-0096
<http://charybdis.whoi.edu/sonya/LIWI/>

LONG-TERM GOALS

The long-term goals of this project are to obtain an understanding of the mechanisms by which tidal energy is used to vertically mix the ocean against the action of gravity. Ultimately better parameterizations of the mixing caused by tides will result, allowing better prediction of coastal dynamics, biogeochemistry and sediment transport and the oceanic general circulation.

OBJECTIVES

The process of mixing by tides interacting with topography involves several stages. First some fraction of the energy contained in the barotropic tide must be converted into baroclinic energy, through the generation of internal tides and turbulent boundary layers. Secondly, the energy in the internal tides must be transmitted into smaller vertical wavelengths, thereby increasing the vertical shear of the motion. When vertical shears are sufficiently strong, instability may result, leading to overturning and mixing. Finally, the mixed fluid is transported away from the mixing region modifying the ocean stratification. The net effect of the tides on the ocean stratification depends on the efficiency of all three processes.

Our objectives are to understand (a) the generation of internal tides by the interaction between barotropic tides and topography including finite-amplitude three-dimensional variations in topography, finite-amplitude barotropic tidal forcing, non-hydrostatic effects and the boundary layer processes; (b) the mixing generated by internal tides reflecting from a sloping boundary in the presence of both two- and three-dimensional variations in slope, and finite rotation; and (c) the mechanisms of lateral and isopycnal transport of mixed fluid away from the boundary induced by the secondary circulations generated through spatial variations in mixing. Earlier studies have ignored three-dimensional large amplitude variations in topography and non-hydrostatic effects (which are important for small-aspect ratio motion).

APPROACH

We use high-resolution numerical simulations to explicitly resolve the turbulent mixing processes. For such simulations we require a numerical model which can (a) capture the non-hydrostatic physics of overturning and mixing processes and (b) include arbitrary three-dimensional variations in topography. The Marshall et al. (1997a,b) code (known as the MIT ocean model), which is non-hydrostatic, and

Report Documentation Page

Form Approved
OMB No. 0704-0188

Public reporting burden for the collection of information is estimated to average 1 hour per response, including the time for reviewing instructions, searching existing data sources, gathering and maintaining the data needed, and completing and reviewing the collection of information. Send comments regarding this burden estimate or any other aspect of this collection of information, including suggestions for reducing this burden, to Washington Headquarters Services, Directorate for Information Operations and Reports, 1215 Jefferson Davis Highway, Suite 1204, Arlington VA 22202-4302. Respondents should be aware that notwithstanding any other provision of law, no person shall be subject to a penalty for failing to comply with a collection of information if it does not display a currently valid OMB control number.

1. REPORT DATE 30 SEP 2002	2. REPORT TYPE	3. DATES COVERED 00-00-2002 to 00-00-2002			
4. TITLE AND SUBTITLE Mixing by Tidal Interaction with Sloping Boundaries		5a. CONTRACT NUMBER			
		5b. GRANT NUMBER			
		5c. PROGRAM ELEMENT NUMBER			
6. AUTHOR(S)		5d. PROJECT NUMBER			
		5e. TASK NUMBER			
		5f. WORK UNIT NUMBER			
7. PERFORMING ORGANIZATION NAME(S) AND ADDRESS(ES) Department of Physical Oceanography,, Woods Hole Oceanographic Institution,, Woods Hole,, MA, 02543		8. PERFORMING ORGANIZATION REPORT NUMBER			
9. SPONSORING/MONITORING AGENCY NAME(S) AND ADDRESS(ES)		10. SPONSOR/MONITOR'S ACRONYM(S)			
		11. SPONSOR/MONITOR'S REPORT NUMBER(S)			
12. DISTRIBUTION/AVAILABILITY STATEMENT Approved for public release; distribution unlimited					
13. SUPPLEMENTARY NOTES					
14. ABSTRACT The long-term goals of this project are to obtain an understanding of the mechanisms by which tidal energy is used to vertically mix the ocean against the action of gravity. Ultimately better parameterizations of the mixing caused by tides will result, allowing better prediction of coastal dynamics, biogeochemistry and sediment transport and the oceanic general circulation.					
15. SUBJECT TERMS					
16. SECURITY CLASSIFICATION OF:			17. LIMITATION OF ABSTRACT	18. NUMBER OF PAGES	19a. NAME OF RESPONSIBLE PERSON
a. REPORT unclassified	b. ABSTRACT unclassified	c. THIS PAGE unclassified	Same as Report (SAR)	7	

includes topography through a finite-volume formulation, is such a model. We are carrying out three different groups of simulations: (a) We impose topography, barotropic tides and subinertial flows suggested by recent observations (e.g. the region of the TWIST field program, Polzin et al, 1998 and Monterey Canyon region, Petrucio et al., 1998), and investigate the internal tide generated by the flow-topography interactions, comparing these results with earlier models which assume small-amplitude (e.g. Bell, 1975) or two-dimensional finite amplitude (Baines 1982) topography. (b) We impose internal tide forcing and investigate the interaction with a two-dimensionally varying slope, focusing on the influence of finite rotation on the overturning and mixing, and the effect of slope variations in localizing mixing, comparing with earlier laboratory and numerical studies with uniform slope and no rotation (Ivey and Nokes, 1989; Slinn and Riley, 1996). (c) We examine reflection of internal tides from three-dimensionally varying topography.

WORK COMPLETED

In the past year we have focused on analysis of simulations of both internal tide generation and reflection in the TWIST region, working closely with Kurt Polzin to compare results with observations, and simulations of internal tide reflection and breaking on two-dimensional variable slopes. We have carried out the following series of simulations.

Data from the LIWI funded TWIST project (Kurt Polzin, PI) have been used to initialize the stratification and topography for a region of the East Coast. The model has been forced with either the cross-slope barotropic tidal signal (imposed at the off-shore open boundary) or with the along-slope barotropic tidal signal (imposed through a body forcing term). The generation of internal tides at the shelf-break, and over the corrugations on the slope is simulated, and the scattering of the shelf-break waves from the corrugations examined.

Several two-dimensional simulations of internal tide breaking on a continental slope of variable topography have been completed.

In addition to these simulations, theoretical work has been completed to help interpret the results, including (a) an extension of Thorpe (2001) to include rotation, necessary to describe the scattering of the shelf-break internal tide from corrugations and (b) development of a wave Froude number criterion for the range of topographic slopes over which internal wave breaking will occur.

Three manuscripts have been completed (Legg and Polzin, 2002; Legg 2002; Legg and Adcroft, 2002) and submitted for publication.

Under my supervision, a summer student has carried out a series of two-dimensional calculations to investigate the role of nonlinearity (large barotropic flow speed) in modifying the barotropic to baroclinic energy conversion, and the ratio of mixing to waves for the fate of that energy, for both small amplitude and large amplitude topography.

RESULTS

In simulations with TWIST topography and stratification an internal tide is generated at the shelf-break by the cross-slope barotropic tide. This internal tide reflects from the slope in a region of corrugations; in addition the reflected wave scattered waves are generated with an along-slope wavenumber given by the wavenumber of the corrugations. These scattered waves are not present if planetary rotation is

ignored, and result from the flow of the along-slope velocity component of the primary internal tide (zero in the absence of rotation) over the corrugations. The scattered waves can be predicted by extending the theory of Thorpe (2001) to include rotation, and there is qualitative agreement between the forms of the predicted velocity profiles and the simulated velocity profiles, in addition to the observed velocity profiles. Hence wave scattering at corrugated topography is a mechanism for scattering low mode internal wave energy into higher vertical modes, generating greater shear and greater potential for mixing.

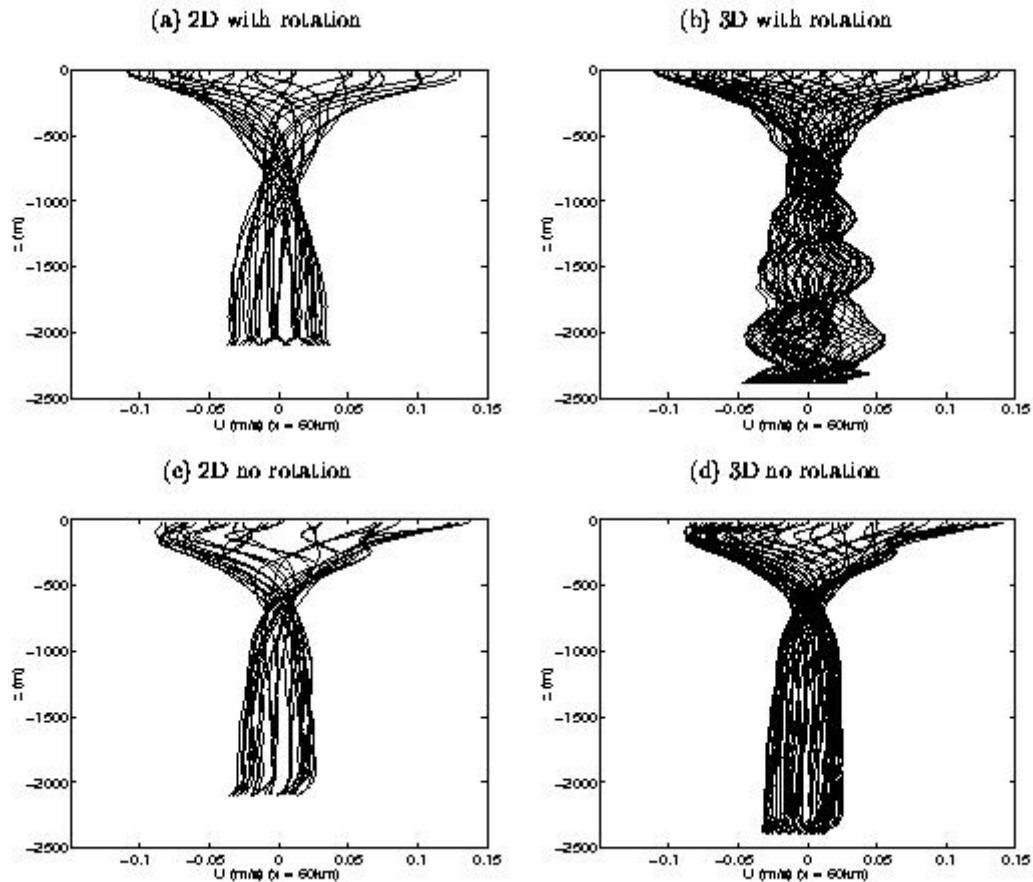


Figure 1: Vertical profiles of cross-slope baroclinic velocity at a location on the continental slope for several tidal cycles, shown for several different simulations: (a) 2D calculation with rotation, (b) 3D calculation with rotation, including topographic corrugations of wavelength 3.3km, orientated up and down the slope, (c) 2D calculation without rotation (d) 3D calculation without rotation, including corrugations. When both rotation and corrugations are included, much more small-scale structure is seen in the velocity field, leading to greater shear especially at depth.

Mixing generated by internal tide reflection at concave and convex slopes

Our numerical calculations have examined the reflection of an internal wave from continental slope topographies which are planar, concave or convex. Whereas earlier analytical studies predict that concave slopes near the critical angle will lead to less mixing than planar or convex slopes, we find

strong mixing in all cases, in the form of bores propagating up the slope, as well as shear instability behind. In all cases a region of mixed fluid results bounded below by the topography, and above by the wave characteristic. We conclude that the principal difference between our calculations and the earlier studies is the nonlinearity of the flow. The bores result when the Froude number (flow speed / wave group velocity) of the reflected wave exceeds unity - the reflection process tends to increase the velocity amplitude and decrease the group velocity of the wave. We derive a range of slope angles around the critical angle at which internal tide breaking can occur, and our predictions agree well with our numerical results.

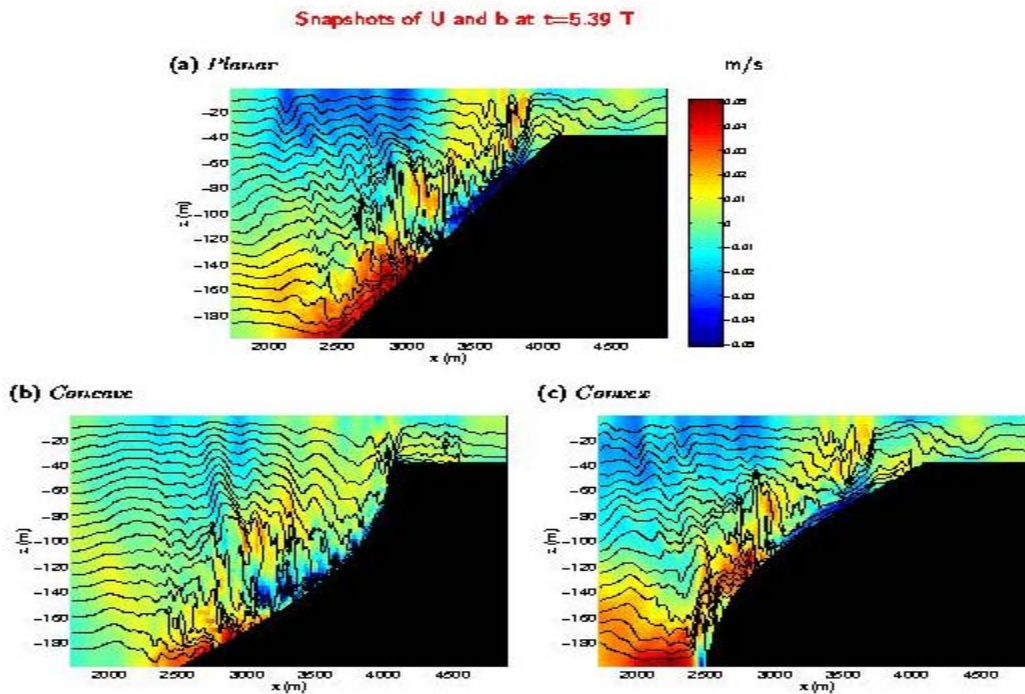


Figure 2: Snapshots of cross-shelf velocity (color) and isopycnals, from 3 different simulations of a mode 1 internal wave reflecting from a sloping boundary. In all three cases the average slope is at the critical angle for the incident internal wave, but the slope shape is (a) planar, (b) concave, (c) and convex about the mid-depth critical point. Whereas analytical theory predicts enhanced mixing due to critical angle reflection only for planar and convex slopes, all three simulations show turbulent mixing, caused by an internal bore propagating up the slope. The bore is characterized by sharp horizontal density gradients, and local overturning.

IMPACT/APPLICATIONS

Our results are helping in the interpretation of observations of tidally forced flows on the continental slope observed by LIWI investigators and others. Our results are demonstrating mechanisms for exciting small vertical scale baroclinic response to barotropic flow over topography. These small vertical scales (and hence large shears) are essential if the tidal forcing is to generate mixing, as widely speculated in recent years. Ultimately these results may help to improve parameterizations of tidal mixing over topography for inclusion in global and coastal circulation models.

TRANSITIONS

We are actively communicating results with K. Polzin, E. Kunze, J. Nash, R. Street, and R-C Lien, to help interpret observations made during LIWI and compare with other numerical simulations of these phenomena.

I am currently discussing ways of implementing the results of the internal tide breaking study in a parameterization of boundary mixing with researchers at NOAA GFDL and members of the MIT ocean modeling development team.

RELATED PROJECTS

This project examines processes closely related to observations included in LIWI (Polzin, Toole and Schmitt and Paduan, Rosenfeld, Kunze and Gregg).

REFERENCES

Baines, P.G. 1982: On internal tide generation models. *Deep Sea Res.*, **29**, 307-338.

Bell, T.H. 1975: Topographically generated internal waves in the open ocean. *J. Geophys. Res.*, **80**, 320-327.

Ivey, G.N. and R.I. Nokes, 1989: Vertical mixing due to the breaking of critical internal waves on sloping boundaries. *J. Fluid Mech.*, **204**, 479-500.

Marshall, J., A. Adcroft, C. Hill, L. Perelman and C. Heisey, 1997a: A finite-volume, incompressible Navier Stokes model for studies of the ocean on parallel computers. *J. Geophys. Res.*, **102**, 5753.

Marshall, J., C. Hill, L. Perelman and A. Adcroft, 1997b: Hydrostatic, quasi-hydrostatic and non-hydrostatic ocean modeling. *J. Geophys. Res.*, **102**, 5733.

Petruncio, E.T., L.K. Rosenfeld, and J.D. Paduan, 1998: Observations of the internal tide in Monterey Canyon. *J. Phys. Oceanogr.*, **28**, 1873.

Polzin, K., J. Toole, R. Schmitt, E. Kunze, E. Montgomery, 1998: Turbulence and Waves over Irregularly Sloping Topography (TWIST), <http://hrp.whoi.edu/hrpgrp/liwi/twist1.html>.

Slinn, D.N. and J.J. Riley, 1996: Turbulent mixing in the oceanic boundary layer caused by wave reflection from sloping terrain. *Dyn. Atmos. Oceans.*, **24**, 51-62.

Thorpe, S.A., 2001: Internal wave reflection and scatter from sloping rough topography. *J. Phys. Oceanogr.*, **31**, 537-553.

PUBLICATIONS

Legg, S. 2002: Internal tide generation on corrugated sloping topography: Part 2: Along-slope barotropic forcing. Submitted to *J. Phys. Oceanogr.*

Legg, S. and K. Polzin, 2002: Internal tide generation on corrugated sloping topography: Part 1: Cross-slope barotropic forcing. Submitted to *J. Phys. Oceanogr.*

Legg, S. and A. Adcroft, 2002: Internal wave breaking at concave and convex continental slopes. Submitted to *J. Phys. Oceanogr.*