

Coordination and Data Management of the International Arctic Buoy Programme (IABP)

Ignatius G. Rigor
1013 NE 40th Street
Polar Science Center, Applied Physics Laboratory
University of Washington, Seattle, WA 98105-6698
Phone: (206) 685-2571 Fax: (206) 616-3142 Email: ignatius@apl.washington.edu

Grant # N00014-98-1-0698
<http://IABP.apl.washington.edu/>

LONG-TERM GOALS

To maintain a research quality database of direct measurements and analyzed fields of surface air temperature (SAT), sea level pressure (SLP), ice motion and other geophysical quantities in the Arctic Basin using drifting buoys.

OBJECTIVES

- To coordinate resources to maintain a network of drifting buoys in the Arctic Basin that measure SLP, SAT and other geophysical quantities. To maintain a research quality database of these observations.
- To study possible improvements in the analyzed geophysical fields.

APPROACH

Coordination of the IABP falls into the categories of information, resource management, and meeting planning. Information is primarily distributed via monthly buoy position charts and by one-to-one correspondence. Figure 1 shows the positions of buoys in September 2001, with the sea ice concentration map obtained from the National Center for Environmental Prediction underlaid. More general information is available in a published brochure. Resource management is focused on matching buoy hardware and deployment opportunities to the requirements of maintaining the buoy network.

Data management consists of analyzing the available buoy data and producing data sets of ice motion, SLP, and SAT for research use. The data collected meet meteorological, climatological, and oceanographic requirements for both research and operational needs. These data sets are described in annual reports, and are archived at the World Data Center, but primary distribution of the data sets has been through the Polar Science Center (PSC) via anonymous ftp. These data and other research products of the IABP are available on the World Wide Web at <http://iabp.apl.washington.edu/>

Report Documentation Page			Form Approved OMB No. 0704-0188		
Public reporting burden for the collection of information is estimated to average 1 hour per response, including the time for reviewing instructions, searching existing data sources, gathering and maintaining the data needed, and completing and reviewing the collection of information. Send comments regarding this burden estimate or any other aspect of this collection of information, including suggestions for reducing this burden, to Washington Headquarters Services, Directorate for Information Operations and Reports, 1215 Jefferson Davis Highway, Suite 1204, Arlington VA 22202-4302. Respondents should be aware that notwithstanding any other provision of law, no person shall be subject to a penalty for failing to comply with a collection of information if it does not display a currently valid OMB control number.					
1. REPORT DATE 30 SEP 2001		2. REPORT TYPE		3. DATES COVERED 00-00-2001 to 00-00-2001	
4. TITLE AND SUBTITLE Coordination and Data Management of the International Arctic Buoy Programme (IABP)				5a. CONTRACT NUMBER	
				5b. GRANT NUMBER	
				5c. PROGRAM ELEMENT NUMBER	
6. AUTHOR(S)				5d. PROJECT NUMBER	
				5e. TASK NUMBER	
				5f. WORK UNIT NUMBER	
7. PERFORMING ORGANIZATION NAME(S) AND ADDRESS(ES) Polar Science Center, Applied Physics Laboratory,,1013 NE 40th Street,University of Washington,,Seattle,,WA, 98105				8. PERFORMING ORGANIZATION REPORT NUMBER	
9. SPONSORING/MONITORING AGENCY NAME(S) AND ADDRESS(ES)				10. SPONSOR/MONITOR'S ACRONYM(S)	
				11. SPONSOR/MONITOR'S REPORT NUMBER(S)	
12. DISTRIBUTION/AVAILABILITY STATEMENT Approved for public release; distribution unlimited					
13. SUPPLEMENTARY NOTES					
14. ABSTRACT To maintain a research quality database of direct measurements and analyzed fields of surface air temperature (SAT), sea level pressure (SLP), ice motion and other geophysical quantities in the Arctic Basin using drifting buoys.					
15. SUBJECT TERMS					
16. SECURITY CLASSIFICATION OF:			17. LIMITATION OF ABSTRACT Same as Report (SAR)	18. NUMBER OF PAGES 6	19a. NAME OF RESPONSIBLE PERSON
a REPORT unclassified	b ABSTRACT unclassified	c THIS PAGE unclassified			

WORK COMPLETED

Our recent efforts to improve the IABP databases have been directed towards producing a new SAT analysis which combines data from the buoys with data from land stations using the objective analysis procedure, optimal interpolation. This new SAT analysis is documented in a paper that has been published in the *Journal of Climate* (Rigor, et al., 2000). The data has been incorporated into a Global SAT climatology (Jones, et al. 1998) and has been included on the Environmental Working Group, Arctic Ocean Meteorology and Sea Ice digital atlases.

RESULTS

Using this SAT dataset, variations in SAT were studied. We show that there was a 2°C/decade warming over the eastern Arctic Ocean as well as a lengthening of the melt season of the sea ice from 1979 – 1997 (Figure 2). We show that these variations in SAT are related to the Arctic Oscillation (Thompson and Wallace, 1998), which accounts for more than 50% of the trends in SAT over much of the Arctic region.

IMPACT/APPLICATIONS

The buoy data meet meteorological, climatological and oceanographic requirements for both research and operational components internationally, and thus the buoy program has gained widespread support. High latitude countries use the data to forecast weather. The data are essential in monitoring climate, assessing the environment, validating model simulations of atmospheric temperature and pressure and ice drift. Specifically, operational weather prediction programs in the circumpolar countries benefit from the surface pressure and temperature data that the network provides. The archived data have been used to study ice motion and dynamics in the Basin. The pressure data are used to estimate the mean surface wind, which can drive sea ice models, and for input into climate change studies.

Recent research using the IABP databases includes back and forward trajectory analysis to study the origins and fate of samples taken from the sea ice. Given the current location of a piece of ice we can trace its probable history, and predict its future deposition. Results of these studies have been published or presented in collaboration with various colleagues.

The data from the IABP has been instrumental in documenting climate change in the Arctic. Results on decadal scale variability show the Arctic Basin to be a center for extraordinarily large change. Using IABP data, Walsh et al. (1996) compared two, eight-year records of sea level pressure (SLP), 1979-86 and 1989-94, and found a 4 mb difference between the means of these two periods. Rigor, et al. (2000) studied the inter-annual trends in SAT (Figure 2) and the length of the melt season over the Arctic Ocean, and showed that these variations are related to the Arctic Oscillation and the changes in circulation.

TRANSITIONS

Walsh et al. (1996) and Rigor et al. (2000) have studied the changes in SLP and SAT in the Arctic using the buoy observations. The warming trends at the surface and the cooling trends noted in the

Microwave Sounding Unit (MSU) data aloft imply changes in atmosphere stability. A study of the corresponding changes in atmospheric stability is in order.

RELATED PROJECTS

1- John M. Wallace (University of Washington) and I are studying interannual variation in the IABP data in relation to the Arctic Oscillation.

2- Roger L. Colony (International Arctic Research Center, University of Alaska Fairbanks) and I are studying the annual cycle of SLP, SAT and ice motion.

3- Using the buoy data, the interannual variability in the transport pathways of sea ice produced in the Siberian Seas is being quantified in collaboration with Stephanie Pfirman (Columbia University).

4- In collaboration with Norbert Untersteiner (University of Washington) and Roger Colony a CD showing animations of the buoy data is in preparation. The intention for this new CD is to make a product that could be used as a teaching aid to study air, sea and ice interaction.

5- We have been working with Florence Fetterer (National Snow and Ice Data Center) to incorporate the IABP SAT and ice motion fields on the Environmental Working Group, Arctic Ocean Meteorology, and Sea Ice digital atlases.

6- We have been working with Estelle Couture (Marine Environmental Data Service, Canada) to produce a CD collecting the first 20 years of IABP data.

REFERENCES

Jones, P.D., M. New, D.E. Parker, S. Martin, and I.G. Rigor, Surface air temperature and its changes over the past 150 years, *Rev. of Geophysics*, v. 37, no. 2, pp. 173 - 199, 1999.

Thompson, D. W. J., and J. M. Wallace, The Arctic Oscillation signature in the wintertime geopotential height and temperature fields, *Geophys. Res. Lett.*, v. 25, no. 9, pp 1297-1300, 1998.

Walsh, J. E., W. L. Chapman, and T. L. Shy, Recent decrease of sea level pressure in the central Arctic, *J. Climate*, v. 9, no. 2, pp. 480-485, February 1996.

PUBLICATIONS

Rigor, I.G., J.M. Wallace, and R.L. Colony, On the response of sea ice to the Arctic Oscillation, *J. Climate*, accepted, 2001.

Rigor, I., R. Colony, S. Martin, Variations in surface air temperature in the Arctic from 1979-1997, *J. Climate*, v. 13, no. 5, pp. 896 - 914, 2000.

Rigor, I., and M. Ortmeyer, International Arctic Buoy Program 2000 Data Report, APL-UW TM 4- 01, Applied Physics Laboratory, University of Washington, 2001.

Rigor, I., and M. Ortmeyer, International Arctic Buoy Program 1999 Data Report, APL-UW TM 6- 00, Applied Physics Laboratory, University of Washington, 2000.

Rigor, I., and M. Ortmeyer, International Arctic Buoy Program 1998 Data Report, APL-UW TM 3- 00, Applied Physics Laboratory, University of Washington, 2000.

Jones, P.D., M. New, D.E. Parker, S. Martin, and I.G. Rigor, Surface air temperature and its changes over the past 150 years, Rev. of Geophysics, v. 37, no. 2, pp. 173 - 199, 1999.

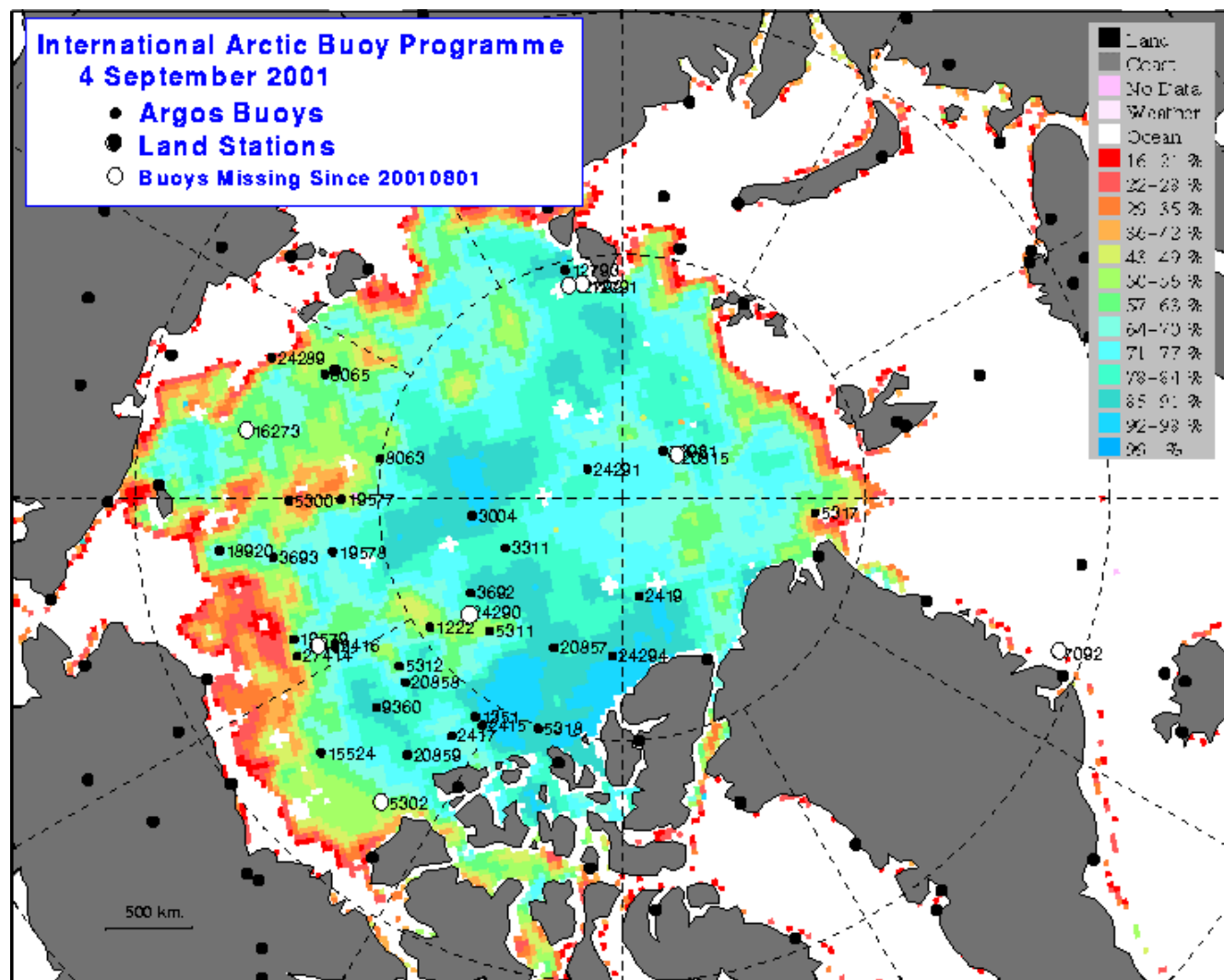


Figure 1. Position of buoys on September 4, 2001 is shown by the black dots. The NCEP sea ice concentrations analysis is also shown.

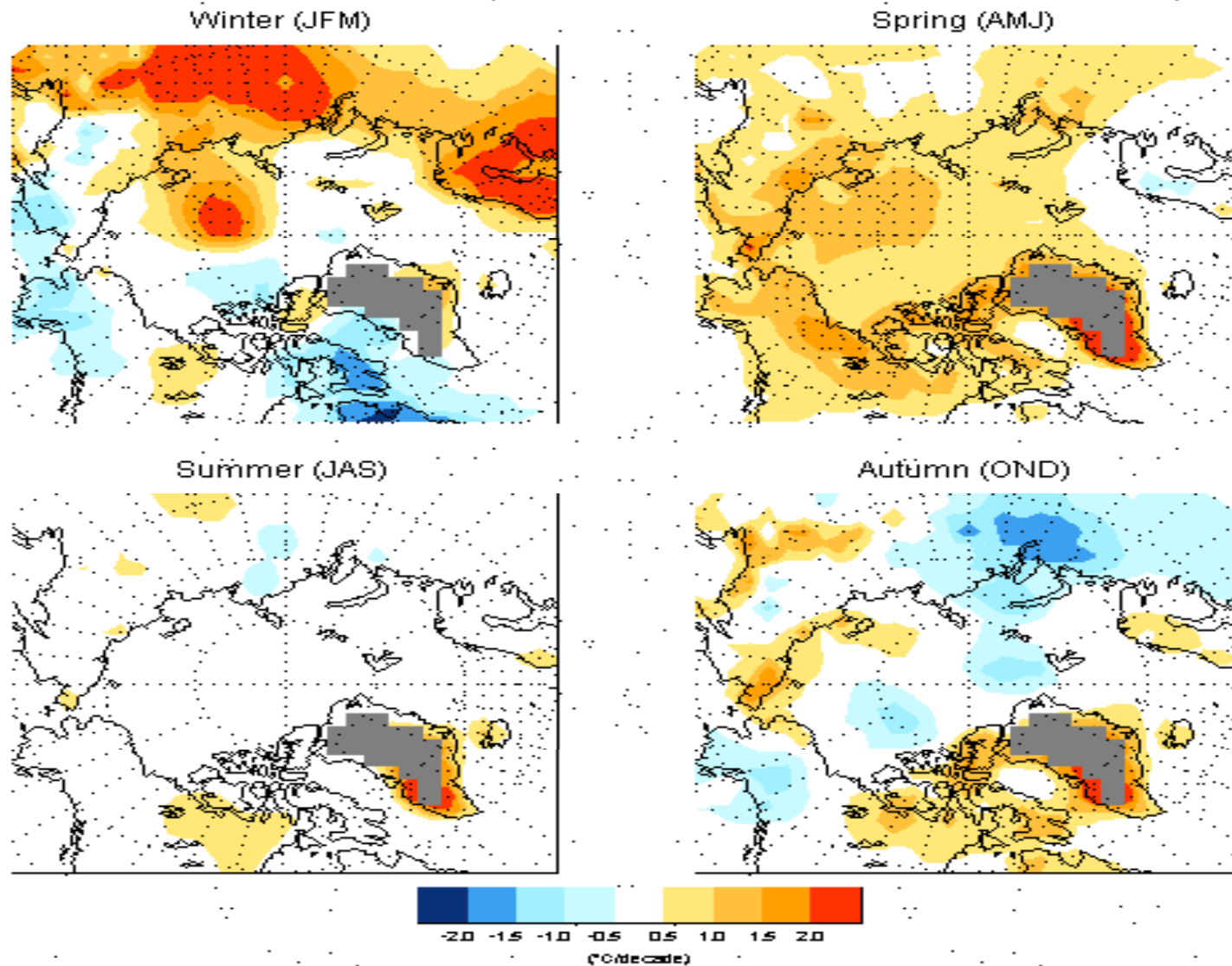


Figure 2. Trends in surface air temperature from 1979 – 1998 estimated from the IABP/POLES surface air temperature analysis. Trends in grid cells that are significant at the 95% level are marked with small black dots. A trend of $+1^{\circ}\text{C}/\text{decade}$ is found during winter in the eastern Arctic Ocean, but a trend of $-1^{\circ}\text{C}/\text{decade}$ is found in the western Arctic Ocean. During spring, almost the entire Arctic shows significant warming trends. In the eastern Arctic Ocean this warming is as much as $2^{\circ}\text{C}/\text{decade}$.