

Seabed Variability and its Influence on Acoustic Prediction Uncertainty

Charles W. Holland
The Pennsylvania State University
Applied Research Laboratory
P.O. Box 30, State College, PA 16804-0030
Phone: (814) 865-1724 Fax (814) 863-8783 email: holland-cw@psu.edu

Award Number: N000140110873

LONG TERM GOALS

Assess and mitigate uncertainty in the tactical naval environment. The specific focus is on the important role of the seabed, which often is a controlling factor in the performance of sonar systems operating in shallow water. The specific goals are to:

- 1) Assess and characterize seafloor variability in shelf environments
- 2) Determine the impact of the seafloor variability on acoustic prediction uncertainty

OBJECTIVES

The objectives of this effort are to 1) characterize the spatial variability of the seabed geoacoustic properties using remote acoustic methods and 2) determine the uncertainties and errors associated with the estimation of the geoacoustic properties.

APPROACH

1. Process broadband seabed reflection data to extract the angular and frequency dependence of the reflection coefficient.
2. Analyze individual site reflection data (time series and reflection coefficients) to extract vertical geoacoustic variability of seabed surficial and sub-bottom properties.
3. Analyze site-to-site reflection data (time series, reflection coefficients, and geoacoustic data) to extract horizontal geoacoustic variability of the seabed.
4. Process scattering data to extract the angular and frequency dependence of the scattering strength. Analyze individual site scattering data using the geoacoustic data and attendant variability from step 3, to extract seabed stochastic parameters (e.g., sound speed and density fluctuation statistics and roughness statistics) describing fine-scale variability.
5. Analyze site-to-site scattering data (time series, scattering strength) to obtain mesoscale (0.1 – 10 km) horizontal variability in collaboration with Goff and Syvitski.
6. Compare deterministic and statistical geoacoustic characterizations between the acoustic inversion method with modeling characterization (Syvitski and Pratson) and direct measurement characterization (Goff). Bound errors/uncertainty in each of the 3 methods and seek new approaches based on a combination/merging of the relevant strengths.
7. Develop methods for characterizing seabed reflection variability so that realistic seafloor variability can be treated. As an example, shallow water random quasi-periodic layering

Report Documentation Page

Form Approved
OMB No. 0704-0188

Public reporting burden for the collection of information is estimated to average 1 hour per response, including the time for reviewing instructions, searching existing data sources, gathering and maintaining the data needed, and completing and reviewing the collection of information. Send comments regarding this burden estimate or any other aspect of this collection of information, including suggestions for reducing this burden, to Washington Headquarters Services, Directorate for Information Operations and Reports, 1215 Jefferson Davis Highway, Suite 1204, Arlington VA 22202-4302. Respondents should be aware that notwithstanding any other provision of law, no person shall be subject to a penalty for failing to comply with a collection of information if it does not display a currently valid OMB control number.

1. REPORT DATE 30 SEP 2001	2. REPORT TYPE	3. DATES COVERED 00-00-2001 to 00-00-2001			
4. TITLE AND SUBTITLE Seabed Variability and its Influence on Acoustic Prediction Uncertainty		5a. CONTRACT NUMBER			
		5b. GRANT NUMBER			
		5c. PROGRAM ELEMENT NUMBER			
6. AUTHOR(S)		5d. PROJECT NUMBER			
		5e. TASK NUMBER			
		5f. WORK UNIT NUMBER			
7. PERFORMING ORGANIZATION NAME(S) AND ADDRESS(ES) The Pennsylvania State University,,Applied Research Laboratory,P.O. Box 30,,State College,,PA, 16804		8. PERFORMING ORGANIZATION REPORT NUMBER			
9. SPONSORING/MONITORING AGENCY NAME(S) AND ADDRESS(ES)		10. SPONSOR/MONITOR'S ACRONYM(S)			
		11. SPONSOR/MONITOR'S REPORT NUMBER(S)			
12. DISTRIBUTION/AVAILABILITY STATEMENT Approved for public release; distribution unlimited					
13. SUPPLEMENTARY NOTES					
14. ABSTRACT Assess and mitigate uncertainty in the tactical naval environment. The specific focus is on the important role of the seabed, which often is a controlling factor in the performance of sonar systems operating in shallow water.					
15. SUBJECT TERMS					
16. SECURITY CLASSIFICATION OF:			17. LIMITATION OF ABSTRACT	18. NUMBER OF PAGES	19a. NAME OF RESPONSIBLE PERSON
a REPORT unclassified	b ABSTRACT unclassified	c THIS PAGE unclassified	Same as Report (SAR)	4	

structures exist and may be fairly common, but are not represented in the current databases. These structures impose a distinct frequency dependence on the seabed reflection coefficient.

8. Develop methods for characterizing seabed scattering strength variability. In some cases scattering strength variability may be due to intrinsic variability in the sediment fabric itself, e.g., a localized gravel deposit. In other cases the variability of the scattering strength may be due only to geometric factors, e.g. layer thickness. At the core of this research is the identification and tracking of the scattering mechanism. By knowing the scattering mechanism, and tracking it laterally, one can determine whether the scattering strength variability is caused by geometric or intrinsic variability.

WORK COMPLETED

This project is in its very early phase. One reflection data set in the STRATFORM area and one on the Scotian shelf have been partially processed. The data were collected under the ONR GeoClutter Program and the joint ONR-NATO SACLANT Centre Boundary Characterization experiment in April- June 2001.

RESULTS

Figure 1 shows a sample of the high quality reflection data collected on the New Jersey shelf (STRATAFORM area). These data permit a very high resolution description of the vertical variability of the sediment properties. The properties of the second sediment layer (gravel) may be crucial for predicting sonar “clutter” events observed in the GeoClutter Experiment.

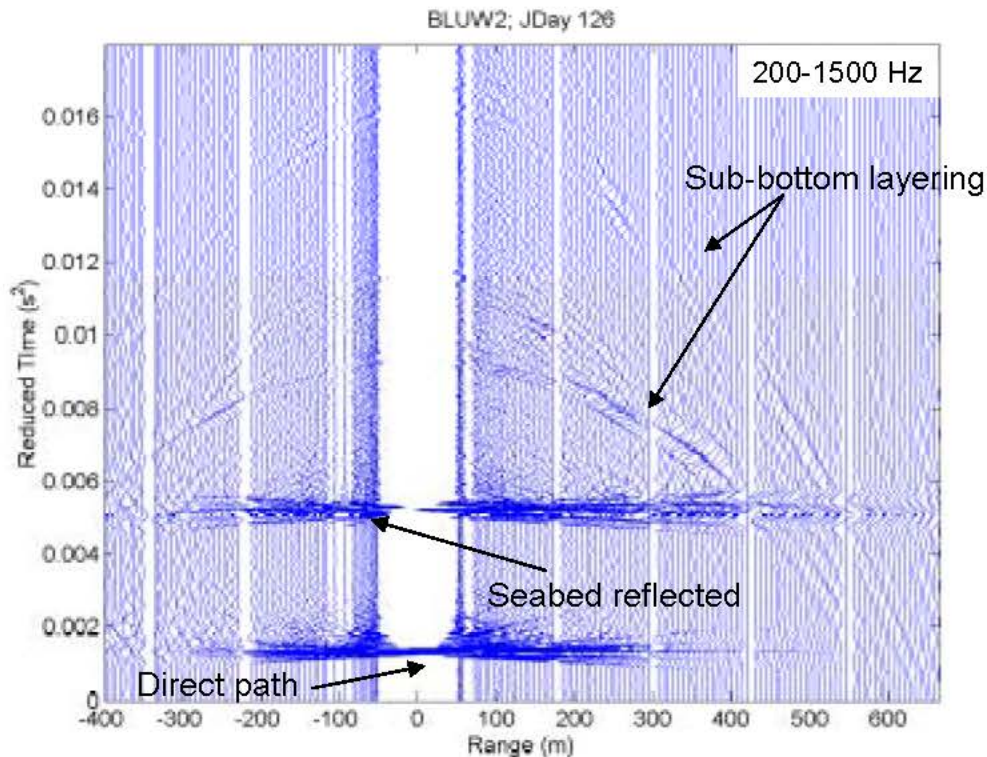


Figure 1. Filtered seafloor reflection data in the New Jersey STRATAFORM area. The data allow quantitative analysis of the sediment layering structure.

IMPACT/APPLICATIONS

New geoaoustic analysis techniques are being developed and applied to reflection and scattering data sets in order to probe the spatial variability and uncertainty associated with seabed properties. The results will be employed by propagation/reverberation modelers to determine the concomitant uncertainty in sonar performance.

RELATED PROJECTS

ONR GeoClutter: Providing high resolution geoaoustic data required for clutter modeling and aiding identification of clutter/scattering mechanisms.

Boundary Characterization Joint Research Project ONR-NATO SACLANT Centre: Collecting shallow water seabed reflection, monostatic and bi-static scattering data to support high fidelity physics-based modeling requirements and to support refinement of long-range environmental assessment techniques.