

AWARD NUMBER:
W81XWH-13-1-0139

TITLE:
Targeting Common but Complex Proteoglycans on Breast Cancer Cells and Stem Cells Using Evolutionary Refined Malaria Proteins

PRINCIPAL INVESTIGATOR: **Ali Salanti**

CONTRACTING ORGANIZATION: **University of Copenhagen
Nørregade 10, 1165 K, Denmark**

REPORT DATE: **September 2014**

TYPE OF REPORT: **Annual Report**

PREPARED FOR: **U.S. Army Medical Research and Materiel Command
Fort Detrick, Maryland 21702-5012**

DISTRIBUTION STATEMENT: **Approved for Public Release;
Distribution Unlimited**

The views, opinions and/or findings contained in this report are those of the author(s) and should not be construed as an official Department of the Army position, policy or decision unless so designated by other documentation.

REPORT DOCUMENTATION PAGE

Form Approved
OMB No. 0704-0188

Public reporting burden for this collection of information is estimated to average 1 hour per response, including the time for reviewing instructions, searching existing data sources, gathering and maintaining the data needed, and completing and reviewing this collection of information. Send comments regarding this burden estimate or any other aspect of this collection of information, including suggestions for reducing this burden to Department of Defense, Washington Headquarters Services, Directorate for Information Operations and Reports (0704-0188), 1215 Jefferson Davis Highway, Suite 1204, Arlington, VA 22202-4302. Respondents should be aware that notwithstanding any other provision of law, no person shall be subject to any penalty for failing to comply with a collection of information if it does not display a currently valid OMB control number. **PLEASE DO NOT RETURN YOUR FORM TO THE ABOVE ADDRESS.**

1. REPORT DATE September 2014		2. REPORT TYPE Annual		3. DATES COVERED 15 Aug 2013 - 14 Aug 2014	
4. TITLE AND SUBTITLE Targeting Common but Complex Proteoglycans on Breast Cancer Cells and Stem Cells Using Evolutionary Refined Malaria Proteins				5a. CONTRACT NUMBER	
				5b. GRANT NUMBER W81XWH-13-1-0139	
				5c. PROGRAM ELEMENT NUMBER	
6. AUTHOR(S) Professor Ali Salanti				5d. PROJECT NUMBER	
				5e. TASK NUMBER	
E-Mail: salanti@sund.ku.dk				5f. WORK UNIT NUMBER	
7. PERFORMING ORGANIZATION NAME(S) AND ADDRESS(ES) University of Copenhagen. Nørregade 10, 1165 K, Denmark				8. PERFORMING ORGANIZATION REPORT NUMBER	
9. SPONSORING / MONITORING AGENCY NAME(S) AND ADDRESS(ES) U.S. Army Medical Research and Materiel Command Fort Detrick, Maryland 21702-5012				10. SPONSOR/MONITOR'S ACRONYM(S)	
				11. SPONSOR/MONITOR'S REPORT NUMBER(S)	
12. DISTRIBUTION / AVAILABILITY STATEMENT Approved for Public Release; Distribution Unlimited					
13. SUPPLEMENTARY NOTES					
14. ABSTRACT In the past year of the project we have successfully produced recombinant VAR2CSA that binds with high affinity and high specificity to breast cancer cells and breast cancer tissue biopsies. We have demonstrated that the protein binds to distinct secondary modified proteoglycans exclusively present on breast cancer cells and that targeting these with recombinant VAR2CSA interferes with key functions of the cancer cell like growth, migration and invasion.					
15. SUBJECT TERMS Cancer, breast cancer, treatment, malaria protein					
16. SECURITY CLASSIFICATION OF:			17. LIMITATION OF ABSTRACT Unclassified	18. NUMBER OF PAGES 16	19a. NAME OF RESPONSIBLE PERSON USAMRMC
a. REPORT Unclassified	b. ABSTRACT Unclassified	c. THIS PAGE Unclassified			19b. TELEPHONE NUMBER (include area code)

**Table of Contents – Annual report.
Professor Ali Salanti, University of Copenhagen.**

	<u>Page</u>
1. Introduction.....	2
2. Keywords.....	2
3. Overall Project Summary.....	2
4. Key Research Accomplishments.....	3
5. Conclusion.....	5
6. Publications, Abstracts, and Presentations.....	6
7. Inventions, Patents and Licenses.....	6
8. Reportable Outcomes.....	6
9. Other Achievements.....	6
10. References.....	6
11. Appendices.....	6

INTRODUCTION:

In pregnant women, parasite-infected red blood cells express a protein that binds to a distinct sugar structure present only on certain cells of the placenta. This highly evolved binding system enables the parasite to evade clearance and infect placental cells, thereby causing pregnancy-associated malaria outbreaks in epidemic regions of the world. Prior to this application we discovered that human breast cancer cells express this same carbohydrate structure which is present on human placental cells. The sugar structure likely enables breast cancer cells to migrate and invade surrounding normal tissue, and plays a role in metastatic spread of the cancer. This raised the intriguing possibility that we could use this naturally refined parasite-host interaction mechanism as a tool to specifically bind human breast cancer cells and inhibit their metastatic potential. The aim of the project was to combine our individual expertise in parasitology (Dr. Salanti) and oncology (Drs. Daugaard and Sorensen) to investigate the potential of exploiting the interaction between the malarial protein, called VAR2, and the breast cancer-associated sugar structure as a novel approach to inhibit growth and metastatic growth of different subtypes of breast cancers.

KEYWORDS:

Breast cancer, Malaria, treatment, metastasis, Recombinant protein, drug conjugate

OVERALL PROJECT SUMMARY: In the past year of the project we have successfully produced recombinant VAR2CSA that binds with high affinity and high specificity to breast cancer cells and breast cancer tissue biopsies. We have demonstrated that the protein binds to distinct secondary modified proteoglycans exclusively present on breast cancer cells and that targeting these with recombinant VAR2CSA interferes with key functions of the cancer cell like growth, migration and invasion. There are no deviations to the agreed research plan and all major tasks has been initiated and some finalized (see below section for breakdown of results)

Key Research Accomplishments:

NOTE: The below reporting relates both to work done at BCCRC in Dr. Daugaards laboratories as well as the part done by Dr. Salanti in Copenhagen. Place of a given task is indicated in brackets.

RE: Major work task I (related to aim I)

A stable expression system for the production of recombinant VAR2CSA has been tested and validated in Shuffle *E. coli* cells. Most importantly we have developed a methods to ferment VAR2CSA in Shuffle cells, enabling us to produce sufficient amounts of recombinant protein for this project. Figure 1 shows the result of one of the optimized fermentations resulting in a high yield pure protein for the subsequent cellular work. We are currently trying to move the expression system into insect cells and are in the process of mutating glycosylation sites in the VAR2CSA protein (as glycosylation of the protein inhibits its activity) (data not shown, in progress). The produced proteins has been tested for binding affinity and specificity to a panel of breast cancer cells, and we have shown that the prokaryotic produced proteins binds breast cancer cells with high affinity (1nM) and high specificity (figure 2 & 3). Scale up batches (15 L fermentations) are currently being made for subsequent *in vivo* experiments. Accordingly, the work within *major work task I* is on schedule. (All this work has been done at UCPH/Salanti).

RE: Major work task II (related to aim II)

To conduct the work outlined in major work task II, we tested a number of different purification technologies including the TAP-TAG approach. It turned out that the best approach was not the TAP-TAG, but a column-based approach where recombinant VAR2CSA was immobilized within a purification column. Using this approach, we have until now successfully identified a number of proteoglycans that interact with the recombinant malaria protein VAR2CSA when sulfated on carbon 4 of the CS backbone. We have identified CSPG4 as a major protein in breast cancer cells, but also a range of new targets that needs to be validated. Using a holistic approach by overexpressing all human plasmamembrane associated proteins on the surface of HEK cells and probing with recombinant VAR2CSA we have identified 17 proteoglycans that can support VAR2CSA binding (by expressing a CSA chain), several of these were identified to be overexpressed in human breast cancer tissue (Figure 4) Accordingly, the work within *major work task II* is on schedule. (The method for pulling down

breast cancer associated proteoglycans was developed at UCPH/Salanti and performed by a PhD student from UCPH working in Daugaards laboratory)

RE: Major work task III (related to aim III)

The work described in *Subtask III-A* has been finalized. We have with success investigated the internalization patterns of recombinant VAR2CSA and found that the protein internalize into intracellular structures within 15-20 minutes after addition to the tumor cell culture and that it ends up in the lysosomal compartment. (This work has been done both at UCPH and BCCRC) (Figure 5A)

The work described in *Subtask III-B* is well on its way and on schedule. We have identified the main signaling pathway affected by recombinant VAR2CSA (Integrin signaling) and validated this biochemically. We are currently investigating functional readouts of this signaling pathway. (This work is done by a PhD student enrolled at UCPH, working with Dr. Daugaard at BCCRC) (data not shown and figure 8)

RE: Major work task IV (related to aim IV)

The work described in *Subtask IV-A*, has been concluded according to plan. We have successfully established an IHC procedure for high-throughput tissue analysis on the VentureDiscovery platform. An important finding here is that the fixed tissue cannot be subjected antigen retrieval procedures (otherwise used for most IHC antibodies), as this process destroys the glycosaminoglycan target on the tissue. Based on this we have identified the optimal concentration of the recombinant VAR2CSA to be 500 pM in this assay. The optimized protocol is based on a primary incubation of a V5-tagged VAR2CSA, followed by a secondary incubation with a mouse monoclonal anti-V5 antibody, finalized by a detection step using anti mouse-HRP (figure 6 and 7)

The work described in *Subtask IV-C*, has commenced and we have tested the first test-TMA with encouraging results. The first indication is that we bind approximately 80-90% of the breast tumor specimens on the test array. (This work is done at BCCRC using protein from UCPH) (data are currently being analyzed)

RE: Major work task V (related to aim V)

To facilitate coupling of saporin to VAR2CSA we have made a VAR2CSA protein with a biotin acceptor site and procured saporin coupled to streptavidin. We have failed to directly couple saporin to VAR2CSA without significantly reducing affinity of VAR2CSA to CSA. The biotin-VAR2 drug conjugate kills a several tested breast cancer cells with nM IC50 values (This work has been done at UCPH and *in vitro* efficacy has been repeated at BCCRC) (Figure 5)

RE: Major work task VI (related to aim VI)

The work outlined under Major work task VI has been initiated. As described in Subtask VI-A we are testing a panel of human breast cancer cell lines for their ability to bind recombinant VAR2CSA. To date we have tested 9 breast cancer cell lines and are planning to test the rest of our panel within the next 2-3 months. The result so far is very encouraging in the sense that all tested cell lines can be bound by recombinant VAR2CSA (data are being accumulated as lines are being tested, data not shown and Figure 3)

As described in Subtask VI-B, we are investigating the functional consequences of VAR2CSA binding to breast cancer cells. This work was recently initiated according to plan and our first results with the triple negative breast cancer cell line MDA-MB-231 suggests that recombinant VAR2CSA inhibits cell motility, but not proliferation, of these cells. Over the next 6 months we will include more cell lines in this analysis and hopefully be able to get a more detailed picture of this interesting phenotype (figure 8)

CONCLUSION: In summary the research is progressing according to the plan. We have managed to produce and quality control a scale up production of the malaria protein VAR2CSA. We have extensive data demonstrating that this protein specifically targets sulfated chondroitin sulfate A proteoglycans present on all tested breast cancer cells and the vast majority of tested tissue biopsies. Using pull down assays we have an overview of what the protein cores is and our functional *in vitro* assays demonstrate that targeting these proteoglycans interfere with integrin mediated focal adhesion. The next steps is to start up the animal experiments and show how IV injection of the VAR2CSA protein interferes with these pathways *in vivo*, in addition we have produced protein to test *in vivo* in subcutaneous models.

PUBLICATIONS, ABSTRACTS, AND PRESENTATIONS:

Manuscript:

Salanti et al. In the process of being resubmitted to Cell after first positive review

Presentations:

- A) Gordon research conference, July 6-11, 2004 : Targeting of cancer-specific chondroitin sulfate A on circulating tumor cells using a evolutionary refined malaria protein
- B) National Annual PhD meeting in Oncology, March 26-27: Development of new diagnostic cancer methods using malaria proteins

INVENTIONS, PATENTS AND LICENSES

Nothing to report

REPORTABLE OUTCOMES:

- a) We have demonstrated that we can produce, under method compatible with GMP production, sufficient amounts and in high quality VAR2CSA to be the future treatment to breast cancer
- b) We have demonstrated that VAR2CSA binds to around 90% of all tested breast cancer biopsies
- c) We have demonstrated that VAR2CSA binds to CSA on proteoglycans that has been demonstrated to be key to breast cancer progression, and that upon binding the ligand is internalized – increasing the feasibility of making a successful drug conjugate

OTHER ACHIEVEMENTS, References:

Nothing to report

Appendices: Figure 1-8

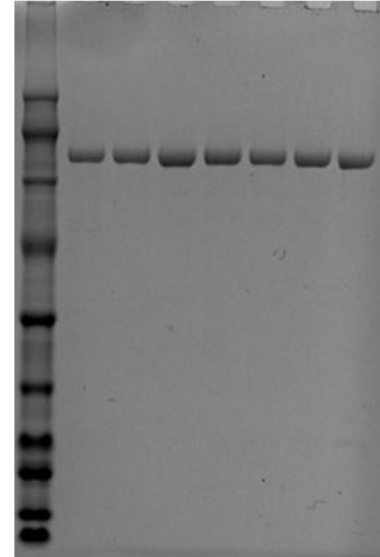
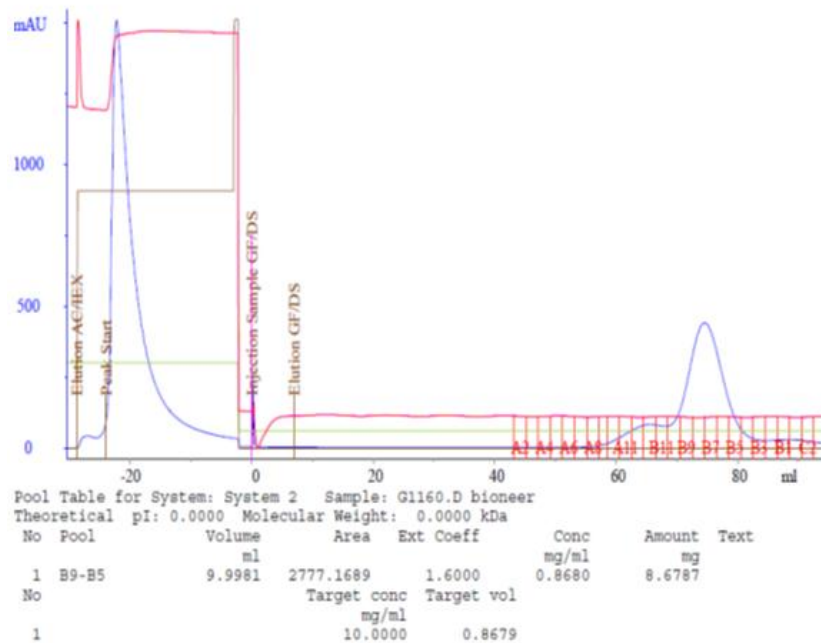


Figure 1. Example of the purification of a single fermentation experiment of VAR2CSA in *E. coli* Shuffle cells. After a two step purification (Affinity chromatography and size exclusion) the yield is around 15mg/L culture. The left panel shows the size exclusion profile, demonstrating that the protein express predominantly as a monomer with no aggregates. The right panel is an SDS page showing the monomer peak, demonstrating a very high purity of the protein

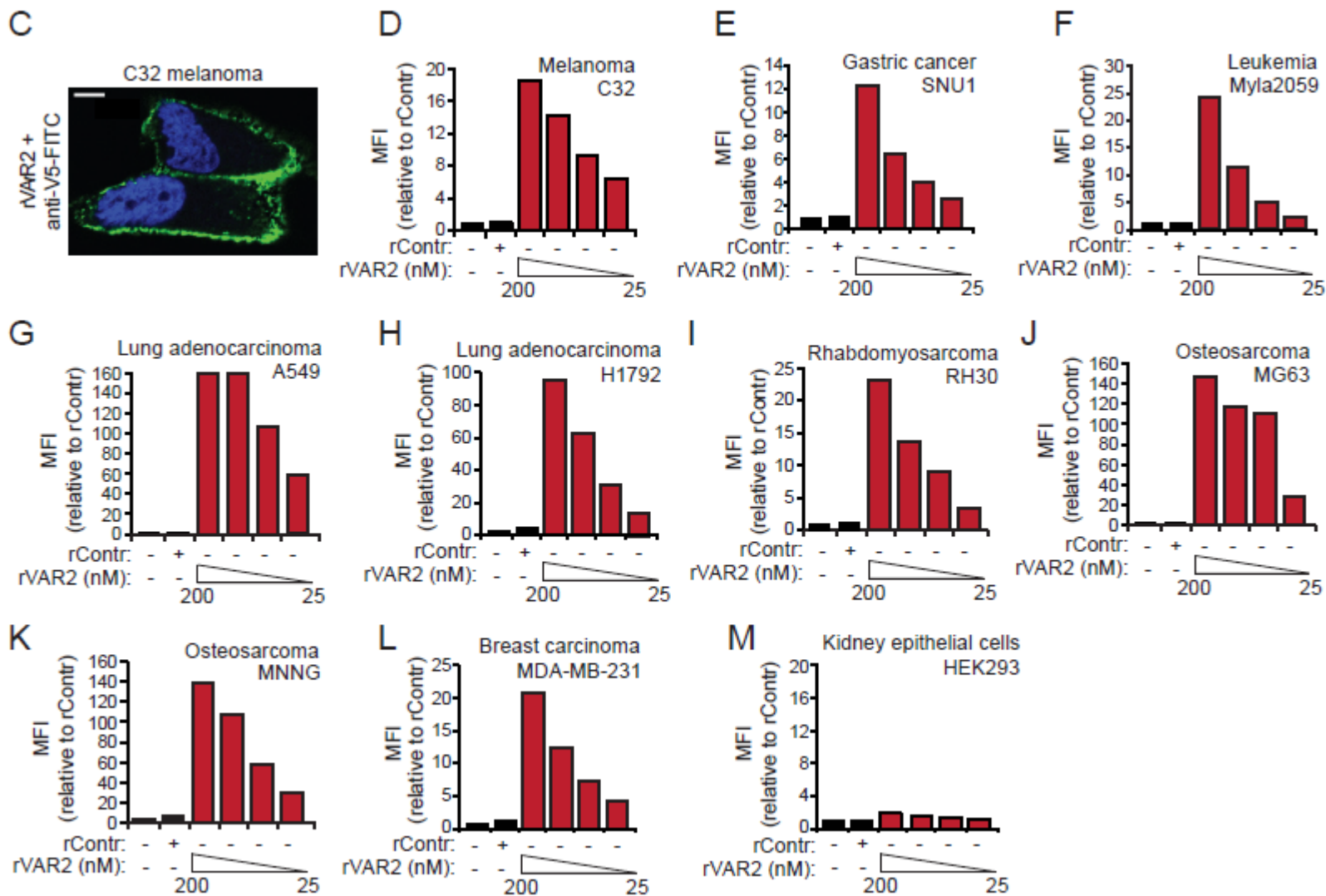


Figure 2. Testing of purified recombinant VAR2CSA binding to panels of cancer cells, including MDA-MB-231 (panel L). VAR2CSA binds to all tested cancer cells measured by flow cytometry using a gradient concentration. No binding was observed to control HEK cells. An example of the staining pattern is shown in panel C.

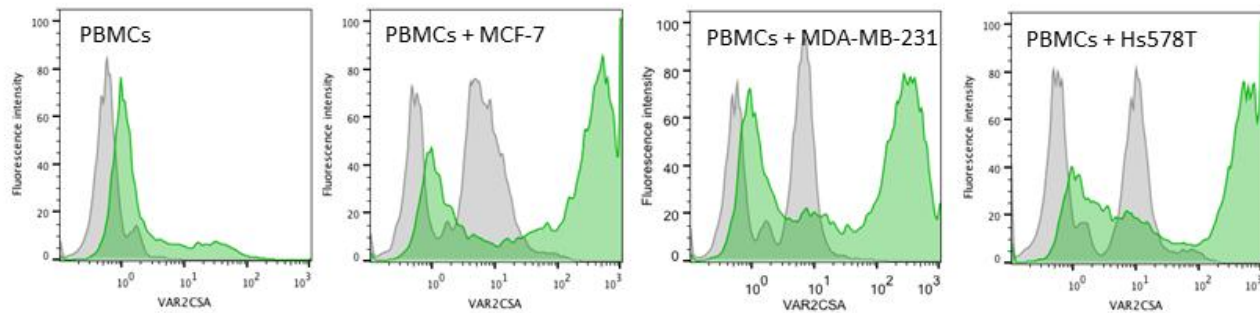
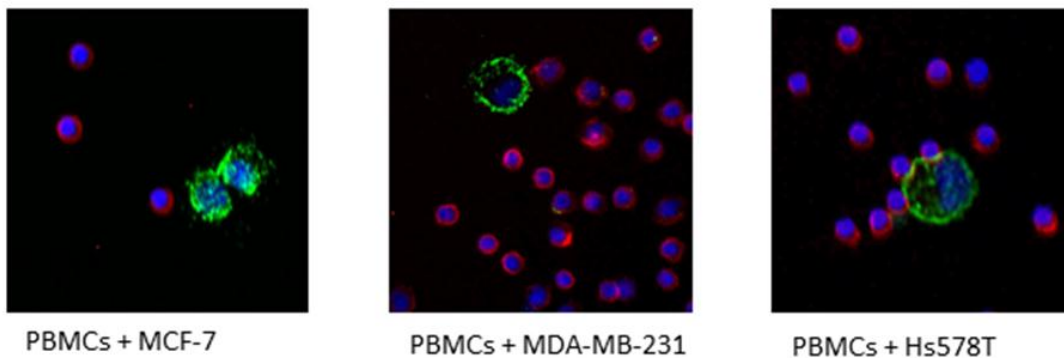
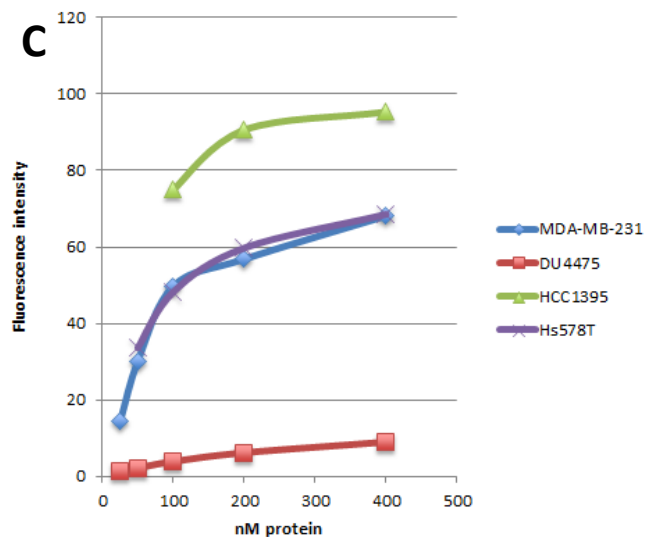
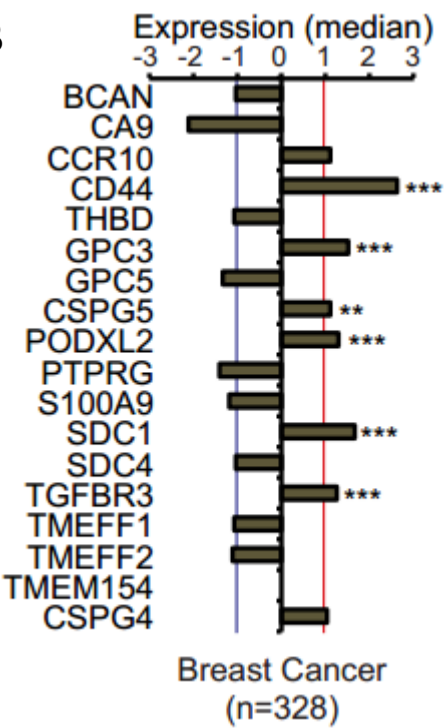
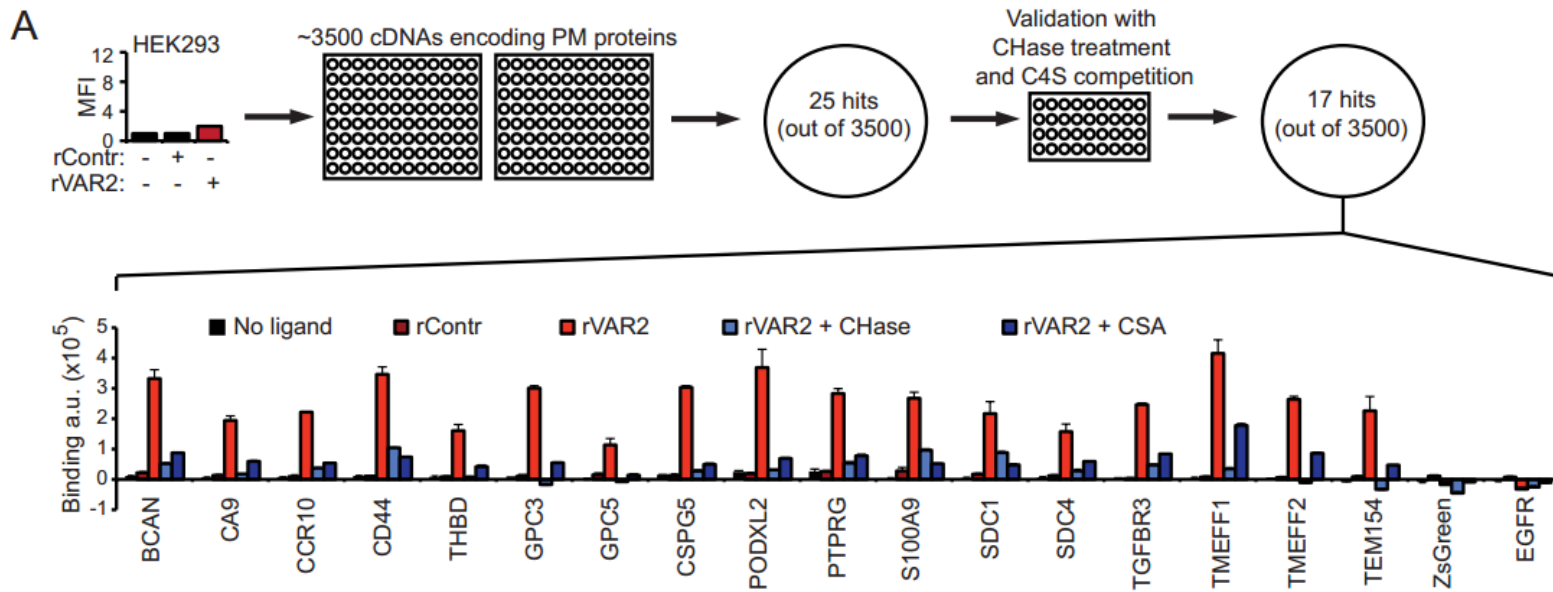
A**B****C**

Figure 3. A) Following purification of mononuclear cells of the peripheral blood (PBMCs) a panel of breast cancer cell lines were spiked into the healthy PBMCs in a 1:1 ratio and VAR2CSA binding was detected using flow cytometry. VAR2CSA showed no binding to the PBMCs whereas it bound to the MCF-7, MDA-MB-231 and Hs578T cell lines, confirming the cancer specificity. **B)** Breast cancer cells were spiked into PBMCs in a 1:10.000 ratio and VAR2CSA staining (green) was detected using the automatic scanning system of the CytoTrack platform. Specificity was confirmed by cell morphology, DAPI positivity (blue) and CD45 negativity (red). **C)** Flow cytometry binding of recombinant VAR2CSA to four different breast cancer cell lines show that all cell lines binds VAR2CSA, to varying degrees.



C

Figure 4:
(A) HEK cells were transfected with 3500 cDNAs encoding known plasma membrane and analyzed for their ability to facilitate binding to recombinant VAR2CSA. 17 Hits were identified. (B). Gene expression analyses (OncoMine) of the identified hits in human breast cancer tissues show that 6-8 of the identified hits are expressed or overexpressed in the cancer tissues.

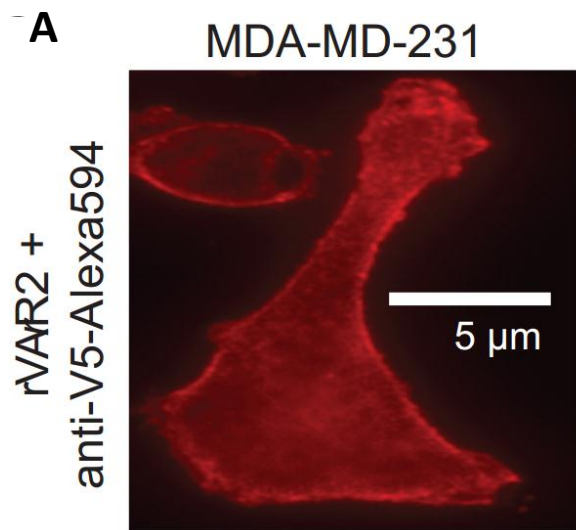
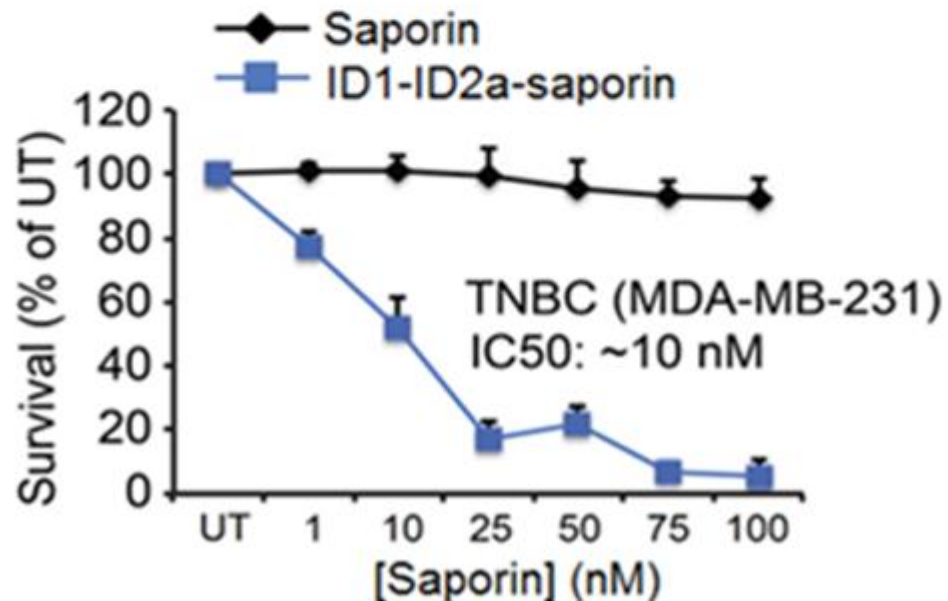
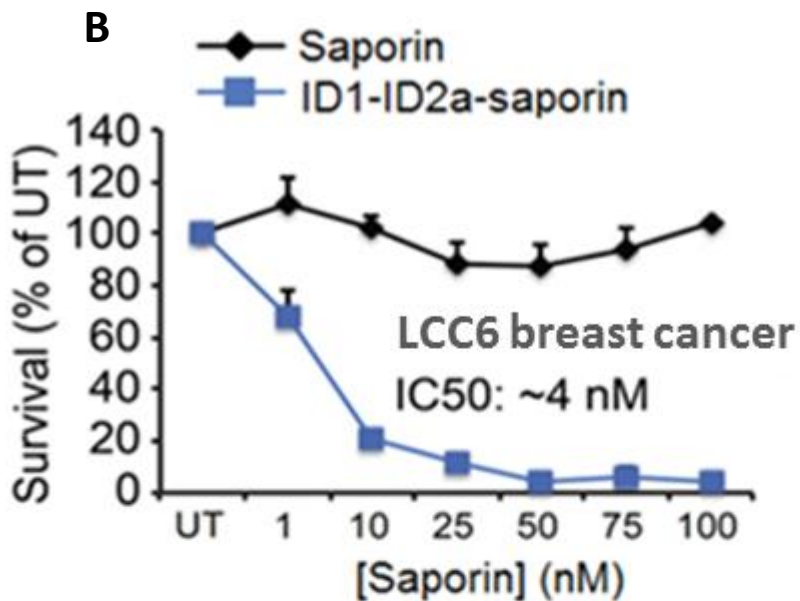


Figure 5.

For proof of concept in vitro study, VAR2CSA subfragment ID-ID2a was biotinylated and mixed with saporin coupled streptavidin. The drug conjugate was labelled with Alexa and the internalization kinetics was observed using live confocal microscopy. In summary recombinant VAR2CSA becomes rapidly internalized by all examined cells- Various breast cancer cells lines were incubated with the drug conjugate and a high efficient cell killing was observed.



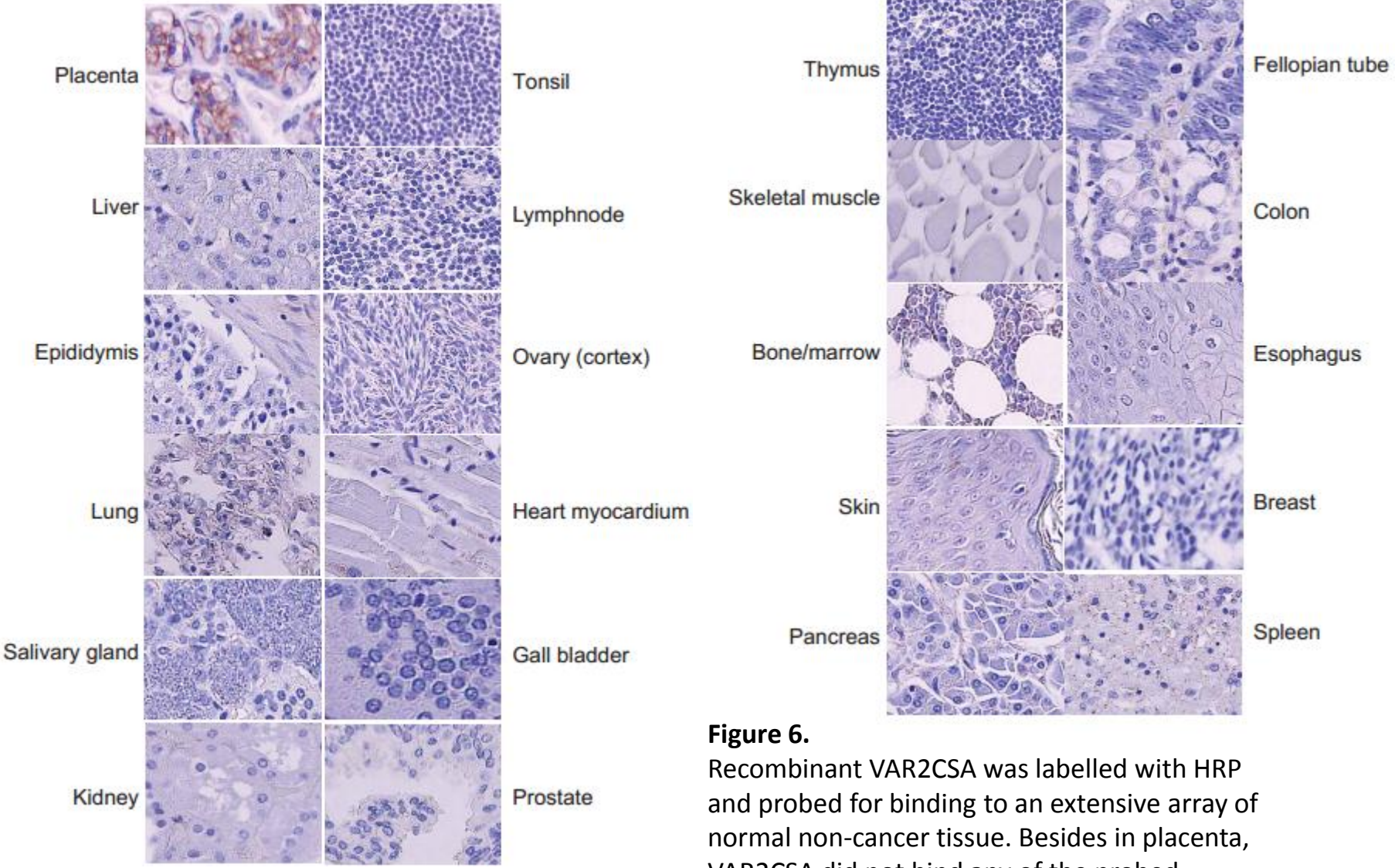


Figure 6. Recombinant VAR2CSA was labelled with HRP and probed for binding to an extensive array of normal non-cancer tissue. Besides in placenta, VAR2CSA did not bind any of the probed tissues

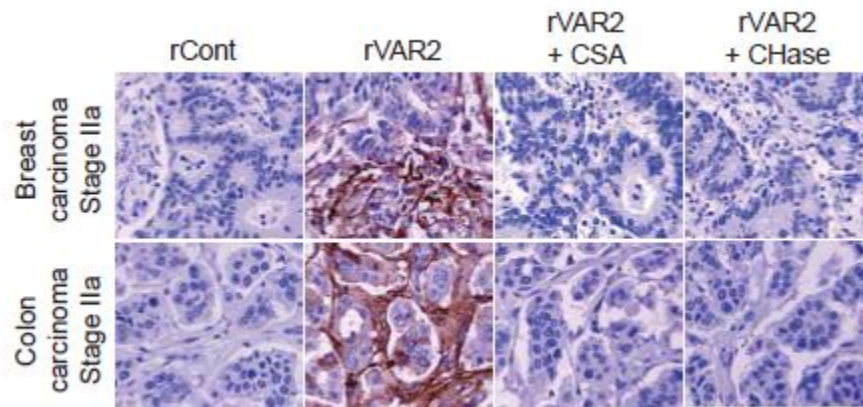
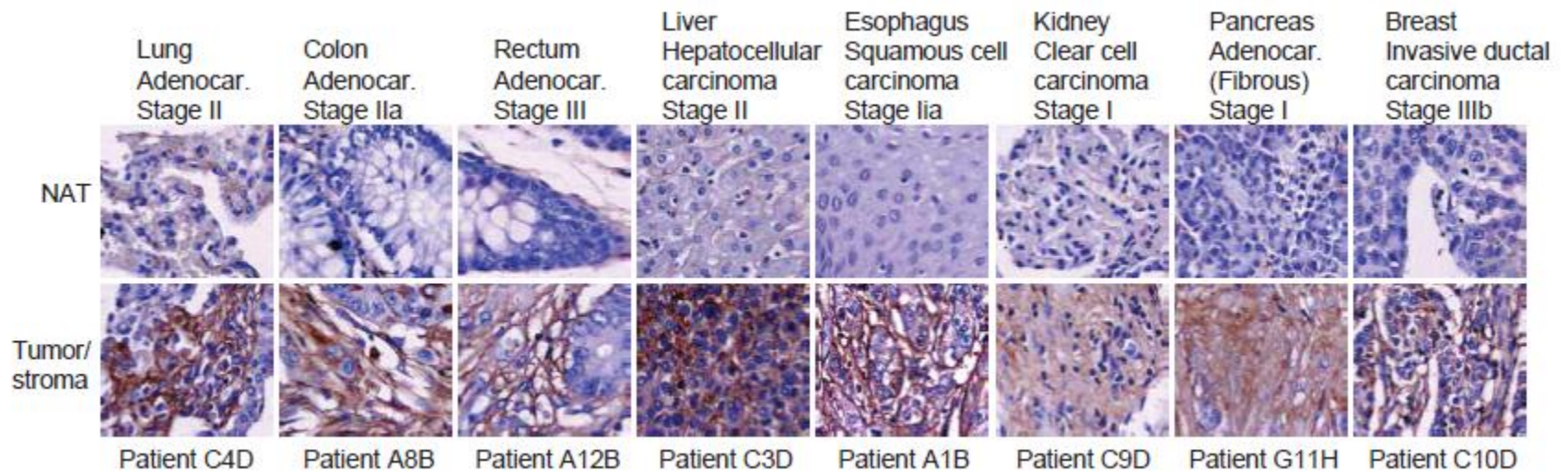


Figure 7.

Recombinant VAR2CSA was labelled with HRP and probed for binding to an extensive array of human cancer tissue and matched adjacent normal tissue. VAR2CSA binds all tested cancer tissues, with no observed binding to normal tissue (upper panel). Competition with soluble CSA or chondroitinase treatment of the tissue removes the VAR2CSA binding (lower panel)

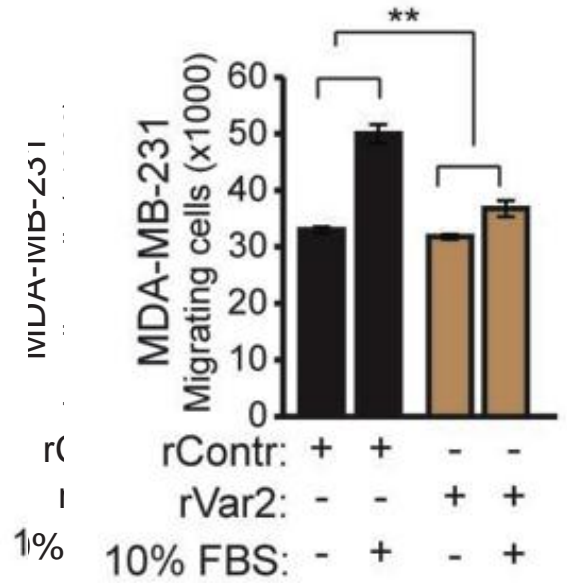
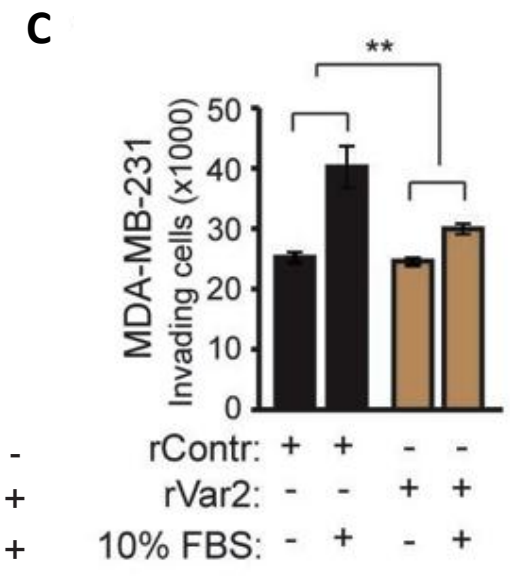
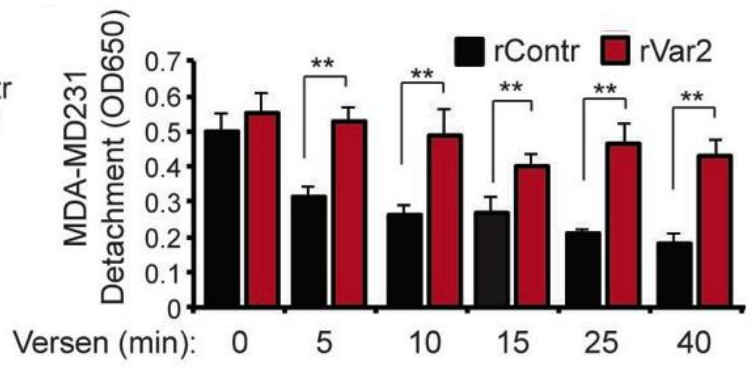
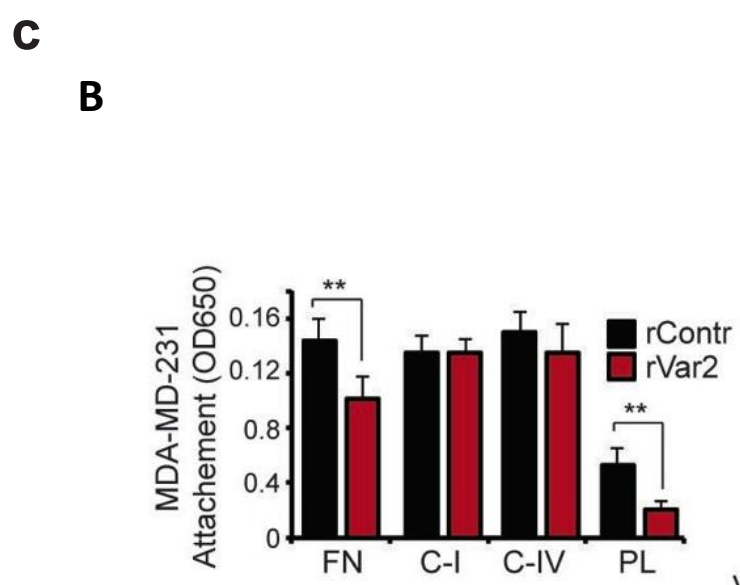
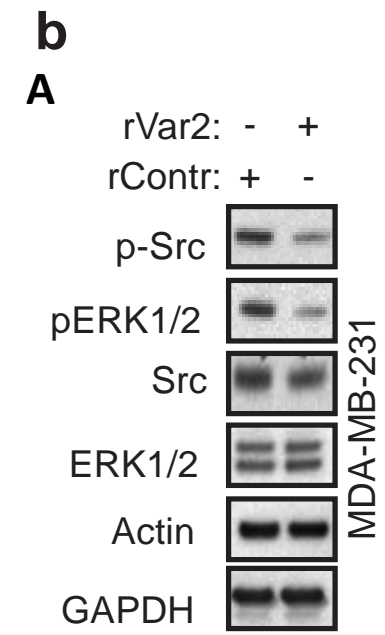


Figure 8: Functional in vitro analyses of MDA-MB-231 incubated with recombinant VAR2CSA. A: VAR2CSA treatment of cells effects p-Src and pERK phosphorylation. B: Treatment of cells with VAR2CSA inhibits cell attachment to fibronectin coated plates (FN) and inhibits detachment of attached cells. C: VAR2CSA incubation inhibits breast cancer cell migration and invasion