



■ RESEARCH: TRAUMA

A versatile model of open-fracture infection

A CONTAMINATED SEGMENTAL RAT FEMUR DEFECT

**J. G. Penn-Barwell,
B. C. C. Rand,
K. V. Brown,
J. C. Wenke**

*From US Army
Institute for Surgical
Research and the
Royal Centre for
Defence Medicine,
United Kingdom*

■ J. G. Penn-Barwell, MSc, MRCS, Trauma & Orthopaedic Registrar Royal Navy
■ B. C. C. Rand, MB ChB, MRSC, Trauma & Orthopaedic Registrar Royal Air Force
■ K. V. Brown, MRCS, MPhil, Trauma and Orthopaedic Registrar British Army Royal Centre for Defence Medicine, Academic Department of Military Surgery and Trauma, Birmingham, UK.

■ J. C. Wenke, PhD, Manager, Extremity Trauma & Regenerative Medicine
1US Army Institute of Surgical Research, 3698 Chambers Pass, Fort Sam Houston, San Antonio, Texas, 78234, USA.

Correspondence should be sent to Mr J. G. Penn-Barwell; e-mail: jowan@doctors.net.uk

10.1302/2046-3758.36.2000293
\$2.00

Bone Joint Res 2014;3:187–92.
Received 9 February 2014;
Accepted after revision 2 April 2014

Objectives

The purpose of this study was to refine an accepted contaminated rat femur defect model to result in an infection rate of approximately 50%. This threshold will allow examination of treatments aimed at reducing infection in open fractures with less risk of type II error.

Methods

Defects were created in the stabilised femurs of anaesthetised rats, contaminated with *Staphylococcus aureus* and then debrided and irrigated six hours later. After 14 days, the bone and implants were harvested for separate microbiological analysis. This basic model was developed in several studies by varying the quantity of bacterial inoculation, introducing various doses of systemic antibiotics with and without local antibiotics.

Results

The bacterial inoculation associated with a 50% infection rate was established as 1×10^2 colony forming units (CFU). With an initial bacterial inoculum of 1×10^5 CFU, the dose of systemic antibiotics associated with 50% infection was 5 mg/Kg of cafazolin injected sub-cutaneously every 12 hours, starting at the time of the first debridement and continuing for 72 hours (seven doses). The systemic dose of cafazolin was lowered to 2 mg/Kg when antibiotic polymethyl methacrylate beads were used concurrently with the same amount of bacterial inoculation.

Conclusion

This model of open fracture infection has been further refined with potential for local and systemic antibiotics. This is a versatile model and with the concepts presented herein, it can be modified to evaluate various emerging therapies and concepts for open fractures.

Cite this article: *Bone Joint Res* 2014;3:187–92.

Keywords: Infection; Open fracture; Contamination; Animal-model; Local antibiotics

Article focus

■ This paper details our institution's experience with refining a previously described contaminated rat femur defect model to give a reliable 50% infection rate with no antibiotics, systemic antibiotics, or systemic with local antibiotics.

Key messages

- Details of a rodent model of a contaminated open fracture are presented.
- Specifically, the quantity of bacterial inoculum and the doses of systemic antibiotic (both used singularly and in combination with local antibiotics) to produce a 50% infection rate in this model are defined.
- Variables such as bacterial inoculum and dose of systemic antibiotics can be

changed to create an environment where different concepts and emerging therapies can be evaluated.

- Within the limits of animal welfare and practicality, our results demonstrate the versatility, reproducibility, and functionality of this model to effectively examine clinically relevant interventions.

Strengths and limitations

- Strength: these studies detail the ability of this model to be adapted to a variety of research questions in the evaluation of treatments of infection in open fractures.
- Limitation: the open-fracture rat model used in this study mimics clinical practice, but does not re-create the clinical reality of open fractures.

Report Documentation Page

*Form Approved
OMB No. 0704-0188*

Public reporting burden for the collection of information is estimated to average 1 hour per response, including the time for reviewing instructions, searching existing data sources, gathering and maintaining the data needed, and completing and reviewing the collection of information. Send comments regarding this burden estimate or any other aspect of this collection of information, including suggestions for reducing this burden, to Washington Headquarters Services, Directorate for Information Operations and Reports, 1215 Jefferson Davis Highway, Suite 1204, Arlington VA 22202-4302. Respondents should be aware that notwithstanding any other provision of law, no person shall be subject to a penalty for failing to comply with a collection of information if it does not display a currently valid OMB control number.

1. REPORT DATE 01 JUN 2014	2. REPORT TYPE N/A	3. DATES COVERED -	
4. TITLE AND SUBTITLE A versatile model of open-fracture infection: a contaminated segmental rat femur defect		5a. CONTRACT NUMBER	
		5b. GRANT NUMBER	
		5c. PROGRAM ELEMENT NUMBER	
6. AUTHOR(S) Penn-Barwell J. G., Rand B. C. C., Brown K. V., Wenke J. C.,		5d. PROJECT NUMBER	
		5e. TASK NUMBER	
		5f. WORK UNIT NUMBER	
7. PERFORMING ORGANIZATION NAME(S) AND ADDRESS(ES) United States Army Institute of Surgical Research, JBSA Fort Sam Houston, TX		8. PERFORMING ORGANIZATION REPORT NUMBER	
		10. SPONSOR/MONITOR'S ACRONYM(S)	
9. SPONSORING/MONITORING AGENCY NAME(S) AND ADDRESS(ES)		11. SPONSOR/MONITOR'S REPORT NUMBER(S)	
		12. DISTRIBUTION/AVAILABILITY STATEMENT Approved for public release, distribution unlimited	
13. SUPPLEMENTARY NOTES			
14. ABSTRACT			
15. SUBJECT TERMS			
16. SECURITY CLASSIFICATION OF:			17. LIMITATION OF ABSTRACT UU
a. REPORT unclassified	b. ABSTRACT unclassified	c. THIS PAGE unclassified	
			18. NUMBER OF PAGES 6
			19a. NAME OF RESPONSIBLE PERSON

Introduction

Infection following open fracture remains a significant challenge to orthopaedic surgeons.^{1,2} Clinical studies of factors that affect infection are difficult. Patient variables and heterogeneity of wounds and fractures all risk confounding clinical research findings. To overcome these problems, large numbers of patients need to be recruited, but it can take many years to report their findings.³ Alternatively, animal models of open fractures offer the potential to test concepts and novel treatments in a reproducible, standardised setting. Variables, other than those under investigation, can be controlled and results obtained rapidly. Although there is a compromise between reality and reproducibility, they allow testing of interventions not sanctioned for clinical trials and save research money for the pursuit of only the most promising therapies. Furthermore, there is a versatility in animal models that allows rapid progress in developing themes as well as the direct comparison of multiple treatment modalities. This paper describes our institution's experience with a rat-contaminated open femur fracture model. This is a versatile, reproducible model for testing interventions in infection of an open fracture.

Materials and Methods

The model used in these studies is based on that first described by Chen, Kidder and Lew⁴ in 2002. These studies were conducted under a protocol in compliance with the Animal Welfare Act and the implementing Animal Welfare Regulations, and in accordance with the principles of the Guide for the Care and Use of Laboratory Animals.

Surgical procedure

Adult male Sprague-Dawley rats (Harlan Laboratories, Indianapolis, Indiana) weighing between 350 g and 400 g on the day of surgery, were anaesthetised with 2% isoflurane, the fur over their right leg shaved, and the skin sterilised with povidone iodine and 70% isopropyl alcohol. An incision is then made in the skin originating over the greater trochanter and continuing distally toward the knee, centred over the femoral shaft. The femoral shaft is then exposed and stabilised with a bespoke contoured polyoxymethylene plate, secured with six threaded K-wires inserted under power (Fig. 1). This allows the humane stabilisation of a bony defect and has the effect of introducing an implant to lower the bacterial inoculum required for infection.⁵ A 6 mm critical defect is then created in the mid-shaft with a reticulating saw (Series 1000, Microaire, Charlottesville, Virginia) with continuous saline irrigation. The defect is then contaminated with 30 mg of sterile bovine collagen soaked with a specified amount of *Staphylococcus aureus* (*S. aureus*) in 0.5 ml of saline. The (Xenogen 36) strain of *S. aureus* used derives from ATCC strain 49525, originally from a septic human patient (Caliper LifeSciences, Santa Clara, California) and has been engineered to emit

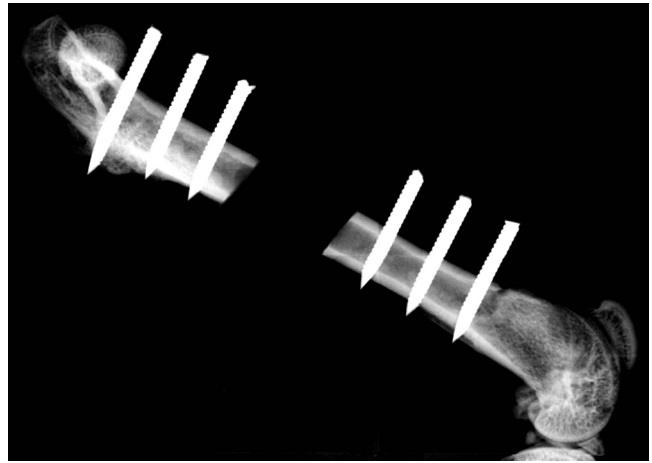


Fig. 1

Radiograph showing a 6 mm defect in a rat femur stabilised by a radiolucent polyoxymethylene plate secured with six threaded 0.9 mm K-wires.

photons. This strain of bacteria has been accepted by other investigators to be an appropriate choice for modelling musculoskeletal infection.⁶ The wound is then closed, with continuous nylon sutures to the fascial layer and surgical clips to skin.

A total of six hours after the original procedure, all animals are re-anaesthetised, their wounds are opened, and all the contaminated collagen is meticulously removed with excision of any necrotic or otherwise non-viable soft tissue. The wound is then irrigated with 60 ml of sterile saline delivered at low pressure from a hand-held syringe held 10 cm from the surgical field. At this stage, local treatments, if applicable, were applied and their wounds similarly closed in layers. The animals recovered with appropriate provision of adequate analgesia, food and water, and they were mobilised without restriction of activity. The animals were euthanised 14 days after simulated injury. Under sterile conditions, the wounds were opened through the healed incision with exposure of the bone defect. The femur and hardware were stripped of soft tissue and separated. The bone tissue was snap-frozen in liquid nitrogen and crushed. Bone and hardware samples were then sent separately for standard quantitative microbiological analysis. Briefly, crushed bone samples were homogenised with 10 ml of saline in an agitator. Similarly, hardware specimens were rinsed with 10 ml of saline in an agitator; then aliquots from individual specimens were sequentially diluted and spread onto tryptic-soy-agar plates. After overnight incubation at 37°C, bacterial colonies were counted and recorded, the threshold of detectability was set at 30 colony forming units per gram (CFU/g). Confirmation that the bacterial colonies being counted are from the original contaminating *S. aureus* is obtained with further imaging using a photon count camera.

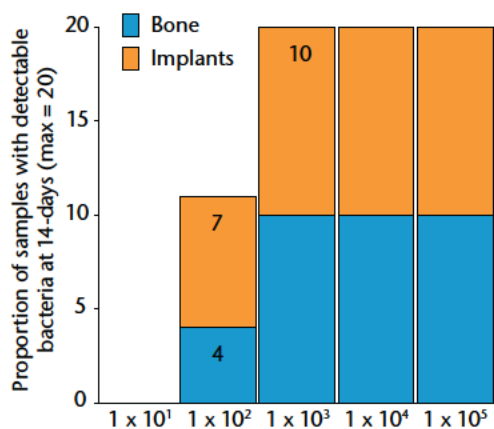


Fig. 2

Graph showing the proportion of bone or implant samples with detectable bacteria in each group of 10 animals (maximum of 20 samples per group) 14 days after inoculation with various quantities of bacteria, given in colony-forming units (CFUs).

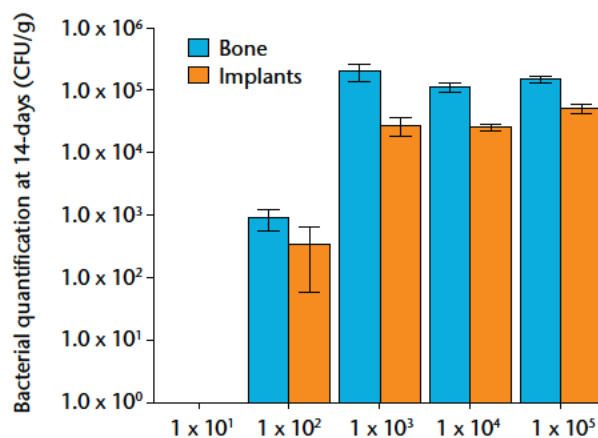


Fig. 3

Graph showing the quantification of bacteria recovered from animals 14 days after inoculation with various quantities of bacteria, given in colony-forming units (CFUs). Error bars show the standard error of the mean.

Outcome measures. The outcome measures were the presence and quantity of bacteria on the bone and hardware samples, normalised for the mass of the sample processed. For the purposes of this paper, the term 'infection' was used to describe an animal on which bacteria were detectable.

Bacterial inoculation. To determine the relationship between initial bacterial inoculation and infection in this model, study groups of ten animals each were inoculated with bacteria at a range of concentrations from 1×10^1 CFU to 1×10^5 CFU, in graduations of single orders of magnitude.

Systemic antibiotics. In animals inoculated with 1×10^5 CFU of *S. aureus*, sub-cutaneous cefazolin was administered at the time of debridement and at 12 hourly intervals for 3 days, at a total of 7 doses. Surgical and antibiotic treatment was initiated at six hours in study groups of six animals, with a range of antibiotic doses calculated according to an assumed animal weight of 400 g.

Systemic and local antibiotics. Antibiotic polymethylmethacrylate (PMMA) beads were manufactured under sterile conditions using Palacos R (Haraeus, Wehrheim, Germany), arthroplasty cement. 40 g of PMMA copolymer powder was blended with 2.0 g of vancomycin (Sigma-Aldrich, St Louis, Missouri) and 2.4 g of tobramycin sulphate (Sigma-Aldrich), then mixed with 20 ml of PMMA monomer liquid. A 3 mm mould was then used to create beads weighing approximately 20 mg and containing 3.3% vancomycin and 4% tobramycin sulphate by weight. In this study, all six animals in each study group were contaminated with 1×10^5 CFU of *S. aureus* and treated with four beads in the wound: two in the bone defect, and two in the surrounding soft tissues; this was the number of beads that reasonably 'fit' into the wound. This delivered a dose of 2.5 mg of vancomycin and 2.9 mg of tobramycin into the wound. All of the ani-

mals in this work that were surgically treated at six hours, had bacteria recoverable from their wounds 14 days later. **Statistical analysis.** The categorical data regarding the presence of bacteria in the bone and on the hardware from study groups were compared using Fisher's exact test. The quantity of bacteria in the bone and on the hardware for each animal was added up and the log transformed before the mean was found for each group. Pairs of groups can then be directly compared using a Mann-Whitney test, or analysis of variance of results across a range of groups was calculated using a Student Newman-Kuells test.

Results

Bacterial inoculation. Bacteria were not detectable in the 10 male Sprague-Dawley rats that were inoculated with 1×10^1 CFU, while all 10 rats inoculated with 1×10^3 and greater had bacteria detectable on both hardware and bone samples (Fig. 2). In the 10 rats inoculated with 1×10^2 , approximately half of the animals had detectable bacteria. This group had a mean bacteria level of several hundred CFU/g while all groups initially inoculated with more bacteria had similar amounts of bacteria in orders of magnitude greater than these levels (Fig. 3 and Table I). When the model is inoculated with 1×10^2 CFU, bacteria are recoverable from approximately 50% of animals at 14 days. **Systemic antibiotics.** All samples in animals treated with 2 mg/Kg were infected, and no animals treated with 10 mg/kg of cefazolin had any bacteria detectable on their bone or hardware. In the study group treated with 5 mg/Kg of cefazolin, approximately half of the animals (6/12) had samples positive for bacteria (Fig. 4). The relationship between bacterial inoculation and subsequent bacterial quantification is shown in (Fig. 5 and in Table II).

Table I. Quantification of bacteria recovered from animals 14 days after inoculation with various quantities of bacteria, given in colony forming units (SEM, standard error of the mean)

	Quantity of colony-forming units				
	1×10^1	1×10^2	1×10^3	1×10^4	1×10^5
Bone mean	0	7.21×10^4	7.83×10^5	1.11×10^5	1.51×10^5
Bone SEM	0	4.40×10^4	1.35×10^5	1.92×10^4	1.95×10^4
Implant mean	0	9.82×10^4	1.65×10^5	2.58×10^4	5.11×10^4
Implant SEM	0	5.10×10^4	1.61×10^5	3.16×10^3	9.11×10^3

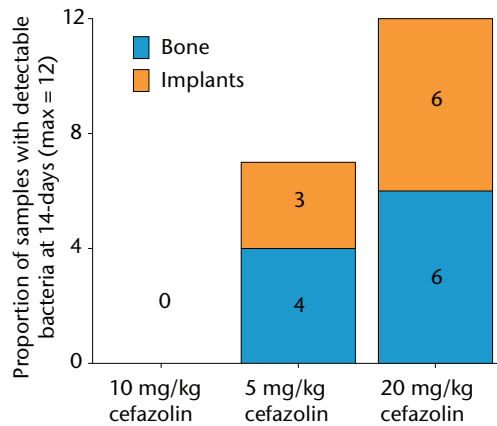


Fig. 4

Graph showing the proportion of samples with detectable bacteria in each group of six animals (maximum of 12 samples per group) 14 days after inoculation with 1×10^5 colony-forming units (CFU) of *S. aureus* and treatment with various doses of systemic cefazolin for 72 hours.

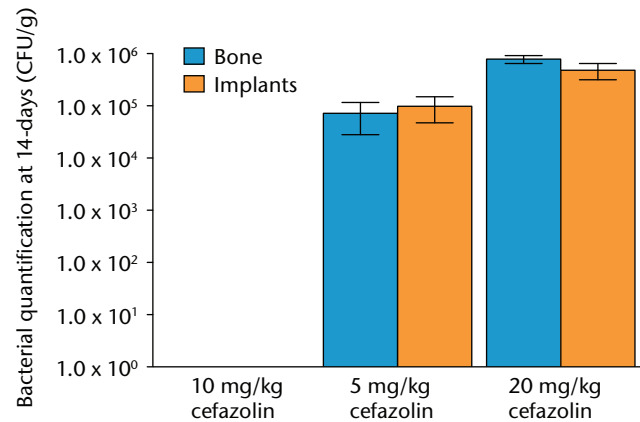


Fig. 5

Graph showing the quantification of bacteria recovered from animals 14 days after inoculation with 1×10^5 colony-forming units (CFU) of *S. aureus* and treatment with various doses of systemic cefazolin for 72 hours. Error bars show standard error of the mean.

Systemic and local antibiotics. The results with respect to infection rate are shown in Figure 6. A 50% infection rate was not clearly established in this study but the relationship between systemic antibiotic dosage and infection in the presence of antibiotic beads is shown in Figure 7 and Table III.

Discussion

Bacterial inoculation-relevance. The early experience of this model in our institution⁷ used an inoculant of 10^5 CFUs. When this was treated with irrigation and debridement at six hours, robust infection was detectable in all animals, necessitating differentiation in the degree of contamination using bacterial quantification.⁷ There is a danger that when the bacterial contamination is this stringent, the effect of treatments that produce anything less than a massive effect on bacterial levels will not be detected, leading to a Type II error. Additionally, a treatment that actually exerted a negative influence on infection i.e. brought about an increase in infection, might not be detected. Finally, in an under-contaminated wound where none of the wounds would become infected due to insufficient bacterial inoculation, a positive treatment effect might not be detected. These examples show the

Table II. Quantification of bacteria recovered from animals 14 days after inoculation with 1×10^5 colony-forming units (CFU) of *S. aureus* and treatment with various doses of systemic cefazolin for 72 hours. Results are given in CFU (SEM, standard error of the mean)

	10 mg/Kg cefazolin	5 mg/Kg cefazolin	2 mg/Kg cefazolin
Bone mean	0	7.21×10^4	7.83×10^5
Bone SEM	0	4.40×10^4	1.35×10^5
Implant mean	0	9.82×10^4	1.65×10^5
Implant SEM	0	5.10×10^4	1.61×10^5

importance of avoiding a floor or ceiling effect. The results of this study establish the bacterial inoculation associated with a 50% infection rate therefore refining this model for further studies.⁸

Systemic relevance of antibiotics. Animals inoculated with 10^5 CFU of bacteria, and then surgically treated at six hours, had an infection rate of approximately 50% when treated with 5 mg/kg of cefazolin for three days. This allows for the surgical and antibiotic treatment to be initiated at different time points, allowing the effect of timing of treatment to be explored.⁹ Use of systemic antibiotics at a dosage that still results in 50% infection rates allows treatments that work harmoniously with antibiotics to be

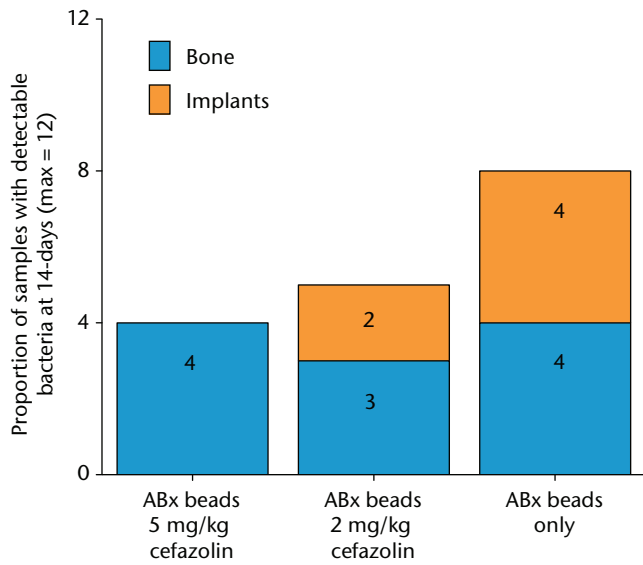


Fig. 6

Graph showing the proportion of samples with detectable bacteria in each group of six animals (maximum of 12 samples per group) 14 days after inoculation with 1×10^5 colony-forming units (CFU) of *S. aureus* and treatment with antibiotic beads and various doses of systemic cefazolin for 72 hours.

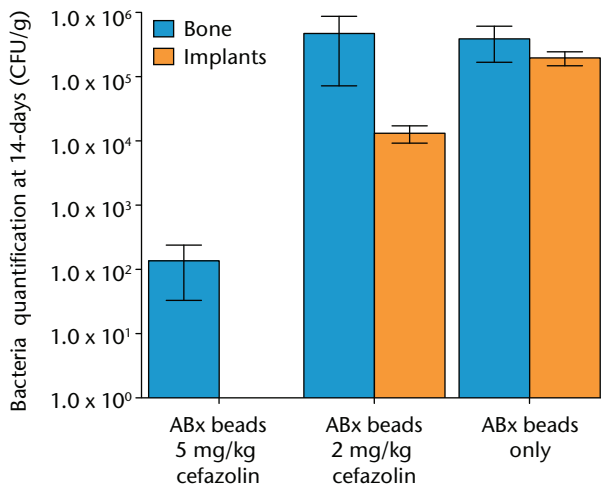


Fig. 7

Graph showing the quantification of bacteria recovered from animals 14 days after inoculation with 1×10^5 colony-forming units (CFU) of *S. aureus* and treatment with antibiotic beads and various doses of systemic cefazolin for 72 hours. Error bars show standard error of the mean.

tested, once again establishing the ‘tipping point’ for infection and thus avoiding floor or ceiling effects in this modification of the basic model.

Systemic and local relevance of antibiotics. In clinical practice, antibiotics may be delivered locally as well as systemically.¹⁰ In fact, this may represent the area of treatment with the most potential for development. The most common local antibiotic vehicle remains antibiotic-loaded PMMA ‘bone cement’ beads.¹¹ This institution has

Table III. Quantification of bacteria recovered from animals 14 days after inoculation with 1×10^5 colony-forming units (CFU) of *S. aureus* and treatment with antibiotic beads and various doses of systemic cefazolin for 72 hours. Results are given in CFU; SEM, standard error of the mean.

	5 mg/Kg cefazolin antibiotic beads	2 mg/Kg cefazolin antibiotic beads	Antibiotic beads only
Bone mean	1.36×10^2	4.72×10^5	3.89×10^5
Bone SEM	1.03×10^2	4.00×10^5	2.21×10^5
Implant mean	0	1.32×10^4	1.96×10^5
Implant SEM	0	3.98×10^3	4.79×10^4

previously published results of the introduction of antibiotic PMMA beads into this open-fracture model.⁷

This study shows infection outcomes in a context closely mimicking the regular clinical practice of concurrent treatment with systemic and local antibiotics. This permits the model to be used to investigate the relationship between infection and combinations of antibiotics delivered in different forms.¹²

Interpretation. The sigmoid curve as shown in Figure 8 is a common treatment effect across dose response studies. In this clinical scenario, a low level of contamination is easily managed by the host with no infection; however, at a certain level of contamination, a tipping point is reached, above which clinical infection overwhelms this host immunity. Clinically, we may influence this situation with a therapy that translates to the left of the curve. If it moves the contamination off the steepest part of the curve, it may mean that even a moderate treatment effect creates a sufficiently different infection rate to reach significance (Fig. 8).

In the model, finding this same tipping point of initial contamination for a set control group with a 50% infection rate allows us to maximise the potential for demonstrating an effect, whether positive or negative, of an intervention group. We describe our results when the pro- and anti-infective variables are changed subtly to result in a significant effect on the proportion of animals with bacteria recoverable from their wounds. These results demonstrate this discrete ‘tipping point’ in the balance between pro- and anti-infective factors across multiple studies which test novel products and treatment strategies, and the importance of this to avoid floor or ceiling effects of tested interventions.^{8,13} Minimising the risk of studies that do not demonstrate efficacy, or those that do not demonstrate the lack thereof, is a waste of investigators time, resources and is unethical in studies using animals. By maximising the potential to establish strategies worth taking further, while minimising the power of these studies, we believe we have shown the ability of this model and these techniques to perform efficient basic science research.

Model flexibility. Although the studies discussed in this paper have focused on a single outcome measure of deep infection, this model can also be used to examine the effect of treatments on fracture healing. If the animals are

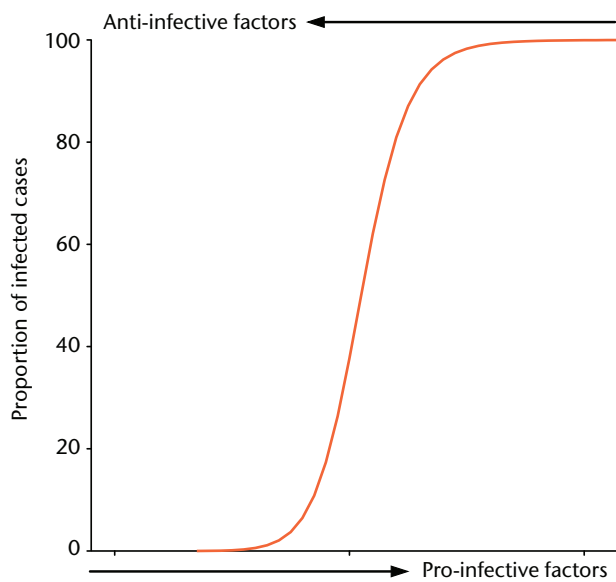


Fig. 8

Idealised curve representing the 'tipping point' at which a host's immune system is unable to eradicate infection and a group of animals in a study group will move from 0% infection to 100% infection, with a small increase in pro-infective factors or a small decrease in anti-infective factors.

kept alive for longer than 14 days, then bone healing in the defect can be quantified with micro-CT or histology after euthanasia.^{14,15}

The studies presented here all involved a six-hour delay between contamination and surgical treatment. This delay has been shown to have a large effect on infection.^{7,13} If there is a longer delay between infection and debridement, this model can be used to investigate a chronic, recalcitrant infection.

This model could be used with a multiple photoluminescent bacteria strain to examine polymicrobial infection, which has yet to be accurately characterised in an animal model.

Study weaknesses. The model used in this study mimics clinical practice but does not re-create the clinical reality of open fractures. Some key differences include the absence of significant soft-tissue damage, a surgically created defect rather than fracture, a single surgical treatment, and immediate fixation and primary closure between injury with contamination and surgical treatment, including debridement and irrigation, which clearly differs from clinical practice. It has been argued that measuring bacterial numbers is a measure of contamination and is not necessarily analogous to infection. We used cafazolin in this model because cephalosporins are a recommended antibiotic option in open fractures,¹⁶ and previous experience with cafazolin in similar animal models reduced the model development work required to design this study. We believe that as this model involves an organism known to be sensitive to the antibiotic used; the effects observed

should be similar with different combinations of bacteria and antibiotic. However, it is possible that the effects observed might be more pronounced with intravenous administration of antibiotics than with oral ingestion or the subcutaneous route that was used in this model, in order to avoid the morbidity from repeated venipuncture in a small mammal. Within the limits of animal welfare and practicality of a cost-effective model, we believe our results demonstrate the versatility, reproducibility, and functionality of this model to examine effectively multiple and clinically relevant interventions.

References

1. MacKenzie EJ, Bosse MJ, Pollak AN, et al. Long-term persistence of disability following severe lower-limb trauma. Results of a seven-year follow-up. *J Bone Joint Surg [Am]* 2005;87-A:1801–1809.
2. Penn-Barwell JG, Bennett PM, Fries CA, et al. Severe open tibial fractures in combat trauma: management and preliminary outcomes. *Bone Joint J* 2013;95-B:101–105.
3. Anglen JO. Comparison of soap and antibiotic solutions for irrigation of lower-limb open fracture wounds. A prospective, randomized study. *J Bone Joint Surg [Am]* 2005;87-A:1415–1422.
4. Chen X, Kidder LS, Lew WD. Osteogenic protein-1 induced bone formation in an infected segmental defect in the rat femur. *J Orthop Res* 2002;20:142–150.
5. Petty W, Spanier S, Shuster JJ, Silverthorne C. The influence of skeletal implants on incidence of infection. Experiments in a canine model. *J Bone Joint Surg [Am]* 1985;67-A:1236–1244.
6. Pribaz JR, Bernthal NM, Billi F, et al. Mouse model of chronic post-arthroplasty infection: noninvasive in vivo bioluminescence imaging to monitor bacterial burden for long-term study. *J Orthop Res* 2012;30:335–340.
7. Brown KV, Walker JA, Cortez DS, Murray CK, Wenke JC. Earlier debridement and antibiotic administration decrease infection. *J Surg Orthop Adv* 2010;19:18–22.
8. Penn-Barwell JG, Murray CK, Wenke JC. Comparison of the antimicrobial effect of chlorhexidine and saline for irrigating a contaminated open fracture model. *J Orthop Trauma* 2012;26:728–732.
9. Penn-Barwell JG, Murray CK, Wenke JC. Early antibiotics and debridement independently reduce infection in an open fracture model. *J Bone Joint Surg [Br]* 2012;94-B:107–112.
10. Keating JF, Blachut PA, O'Brien PJ, Meek RN, Broekhuysen H. Reamed nailing of open tibial fractures: does the antibiotic bead pouch reduce the deep infection rate? *J Orthop Trauma* 1996;10:298–303.
11. Zalavras CG, Patzakis MJ, Holtom P. Local antibiotic therapy in the treatment of open fractures and osteomyelitis. *Clin Orthop Relat Res* 2004;427:86–93.
12. Penn-Barwell JG, Murray CK, Wenke JC. Local Antibiotic Delivery by a Bioabsorbable Gel is Superior to PMMA Bead Depot at Reducing Infection in an Open Fracture Model. *J Orthop Trauma* 2013.(Epub).
13. Penn-Barwell JG, Murray CK, Wenke JC. Early antibiotics and debridement independently reduce infection in an open fracture model. *J Bone Joint Surg [Br]* 2012;94-B:107–112.
14. Li B, Brown KV, Wenke JC, Guelcher SA. Sustained release of vancomycin from polyurethane scaffolds inhibits infection of bone wounds in a rat femoral segmental defect model. *J Control Release* 2010;145:221–230.
15. Guelcher SA, Brown KV, Li B, et al. Dual-purpose bone grafts improve healing and reduce infection. *J Orthop Trauma* 2011;25:477–482.
16. Nanchahal J, Nayagam S, Khan U, et al. *Standards for the Management of Open Fractures of the Lower Limb*. London: Royal Society of Medicine Press, 2009.

Funding statement:

- None declared

Author contributions:

- J. G. Penn-Barwell: Study design, Data collection, Data interpretation, Manuscript writing
- B. C. C. Rand: Study design, Data collection, Data interpretation, Manuscript writing
- K. V. Brown: Data interpretation, Manuscript writing
- J. C. Wenke: Study design, Data interpretation, Manuscript writing

ICMJE Conflict of Interest:

- None declared

©2014 The British Editorial Society of Bone & Joint Surgery. This is an open-access article distributed under the terms of the Creative Commons Attribution licence, which permits unrestricted use, distribution, and reproduction in any medium, but not for commercial gain, provided the original author and source are credited.