

Report Documentation Page				Form Approved OMB No. 0704-0188	
Public reporting burden for the collection of information is estimated to average 1 hour per response, including the time for reviewing instructions, searching existing data sources, gathering and maintaining the data needed, and completing and reviewing the collection of information. Send comments regarding this burden estimate or any other aspect of this collection of information, including suggestions for reducing this burden, to Washington Headquarters Services, Directorate for Information Operations and Reports, 1215 Jefferson Davis Highway, Suite 1204, Arlington VA 22202-4302. Respondents should be aware that notwithstanding any other provision of law, no person shall be subject to a penalty for failing to comply with a collection of information if it does not display a currently valid OMB control number.					
1. REPORT DATE 30 SEP 2006		2. REPORT TYPE		3. DATES COVERED 00-00-2006 to 00-00-2006	
4. TITLE AND SUBTITLE Diapycnal Mixing in a Coastal Regime				5a. CONTRACT NUMBER	
				5b. GRANT NUMBER	
				5c. PROGRAM ELEMENT NUMBER	
6. AUTHOR(S)				5d. PROJECT NUMBER	
				5e. TASK NUMBER	
				5f. WORK UNIT NUMBER	
7. PERFORMING ORGANIZATION NAME(S) AND ADDRESS(ES) University of Washington, Applied Physics Laboratory, 1013 N.E. 40th St., Seattle, WA, 98105				8. PERFORMING ORGANIZATION REPORT NUMBER	
9. SPONSORING/MONITORING AGENCY NAME(S) AND ADDRESS(ES)				10. SPONSOR/MONITOR'S ACRONYM(S)	
				11. SPONSOR/MONITOR'S REPORT NUMBER(S)	
12. DISTRIBUTION/AVAILABILITY STATEMENT Approved for public release; distribution unlimited					
13. SUPPLEMENTARY NOTES					
14. ABSTRACT					
15. SUBJECT TERMS					
16. SECURITY CLASSIFICATION OF:			17. LIMITATION OF ABSTRACT Same as Report (SAR)	18. NUMBER OF PAGES 2	19a. NAME OF RESPONSIBLE PERSON
a. REPORT unclassified	b. ABSTRACT unclassified	c. THIS PAGE unclassified			

Diapycnal Mixing in a Coastal Regime

PI: Michael Gregg

Applied Physics Lab/Univ. Washington, Seattle, WA 98105

phone: (206) 543-1353 fax: (206) 543-6785 email: gregg@apl.washington.edu

CO-PI: Jack Miller

Applied Physics Lab/Univ. Washington, Seattle, WA 98105

phone: (206) 543-9959 fax: (206) 543-6785 email: miller@apl.washington.edu

Award Number: N00014-05-1-0362

LONG-TERM GOALS

To identify the major processes producing mixing in the upper ocean and to understand their dynamics sufficiently well to permit accurate parameterization of mixing for use in numerical models.

OBJECTIVES

This was the first attempt we know of to survey a coastal domain with sufficient coverage to assess how mixing levels vary across the domain. Previous measurements have been concentrated in sub-regions, often revealing particular mixing processes, but insufficient to guide modelers in how to represent mixing over the whole domain.

APPROACH

To obtain spatial coverage, we ran lines of microstructure profiles that were 5-10 km long (Fig. 1). To observe the primary temporal variability, each line was run repeatedly for 12.5 hours, the period of the ‘twice-daily’ tide, and some lines were rerun at a different phase of the monthly tidal period. Our planned lines were modified as we went and began to understand the patterns of tidal currents and mixing in the bay. The mixing measurements were supplemented by the powerful Doppler Sonars installed on R/V Revelle by Rob Pinkel at Scripps and by a 300 kHz ADCP on the bottom the bay.

WORK COMPLETED

Measurements were taken during August 2006, and we are not starting to analyze the data.

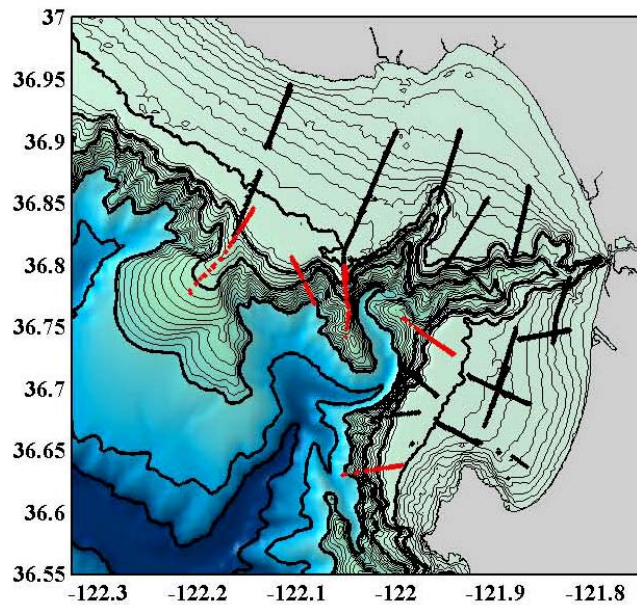


Figure 1: positions of microstructure profiles in Monterey Bay.

[graph: What appear to be lines are dense sets of dots, one per profile, black for those taken with an MMP and red for those made with AMP8. Each line was run for at least 12.5 hours, the period of the 'twice-daily' tide. On the continental shelf thin isobaths are at 10 m intervals. Dark isobaths are 100, 250, 500, 1000, and 1500 m.

RESULTS

Until we have had time to analyze the data, it is premature to discuss even preliminary results.

IMPACT/APPLICATIONS

Too early to tell.