

**A Model for Understanding the Relationship
Between
Transaction Costs and Acquisition Cost Breaches**

Diana I. Angelis

Laura Armey

Carl T. Biggs

Naval Postgraduate School

Report Documentation Page

Form Approved
OMB No. 0704-0188

Public reporting burden for the collection of information is estimated to average 1 hour per response, including the time for reviewing instructions, searching existing data sources, gathering and maintaining the data needed, and completing and reviewing the collection of information. Send comments regarding this burden estimate or any other aspect of this collection of information, including suggestions for reducing this burden, to Washington Headquarters Services, Directorate for Information Operations and Reports, 1215 Jefferson Davis Highway, Suite 1204, Arlington VA 22202-4302. Respondents should be aware that notwithstanding any other provision of law, no person shall be subject to a penalty for failing to comply with a collection of information if it does not display a currently valid OMB control number.

1. REPORT DATE MAY 2014	2. REPORT TYPE	3. DATES COVERED 00-00-2014 to 00-00-2014			
4. TITLE AND SUBTITLE A Model for Understanding the Relationship Between Transaction Costs and Acquisition Cost Breaches		5a. CONTRACT NUMBER			
		5b. GRANT NUMBER			
		5c. PROGRAM ELEMENT NUMBER			
6. AUTHOR(S)		5d. PROJECT NUMBER			
		5e. TASK NUMBER			
		5f. WORK UNIT NUMBER			
7. PERFORMING ORGANIZATION NAME(S) AND ADDRESS(ES) Naval Postgraduate School, Graduate School of Business & Public Policy, Monterey, CA, 93943		8. PERFORMING ORGANIZATION REPORT NUMBER			
9. SPONSORING/MONITORING AGENCY NAME(S) AND ADDRESS(ES)		10. SPONSOR/MONITOR'S ACRONYM(S)			
		11. SPONSOR/MONITOR'S REPORT NUMBER(S)			
12. DISTRIBUTION/AVAILABILITY STATEMENT Approved for public release; distribution unlimited					
13. SUPPLEMENTARY NOTES AFCEA 11th Annual Acquisition Research Symposium, 14-15 May 2014, Monterey, CA.					
14. ABSTRACT					
15. SUBJECT TERMS					
16. SECURITY CLASSIFICATION OF:			17. LIMITATION OF ABSTRACT Same as Report (SAR)	18. NUMBER OF PAGES 16	19a. NAME OF RESPONSIBLE PERSON
a. REPORT unclassified	b. ABSTRACT unclassified	c. THIS PAGE unclassified			

Cost Growth in DoD

- Controlling cost growth for major defense acquisition programs (MDAPs) has been problematic in the Department of Defense (DoD) for many years.
- A 2007 RAND study of 46 weapons system programs in DoD found an average of almost 50% cost growth from Milestone B (program initiation) (Obaid Younossi et. al 2007, xvi).
- According to the GAO, active MDAPs in FY 2011 collectively experienced a cost growth of \$74.4B (GAO 2011, 2).

Transaction Costs

- Transaction costs are the costs associated with source selection, periodic competition and renegotiation, contract negotiation and management, performance measuring and monitoring and dispute resolutions.
- Although they are not often captured in the accounting records, the time and effort associated with these three types of transactions represent real costs to the organization.

Cost Breaches

- A cost breach is considered to occur when cost expenditures exceed the approved baseline cost estimate for an MDAP—also known as the acquisition program baseline (APB).
- If an MDAP has been officially rebaselined cost breaches are measured relative to the current baseline.

Types of Cost Breaches

	APB Breach (RDT&E, Procurement, MILCON, O&M)	Nunn-McCurdy “Significant” Breach (PACU & APUC)	Nunn-McCurdy “Critical” Breach
Current Baseline	+10%	+15%	+25%
Original Baseline	N/A	+30%	+50%

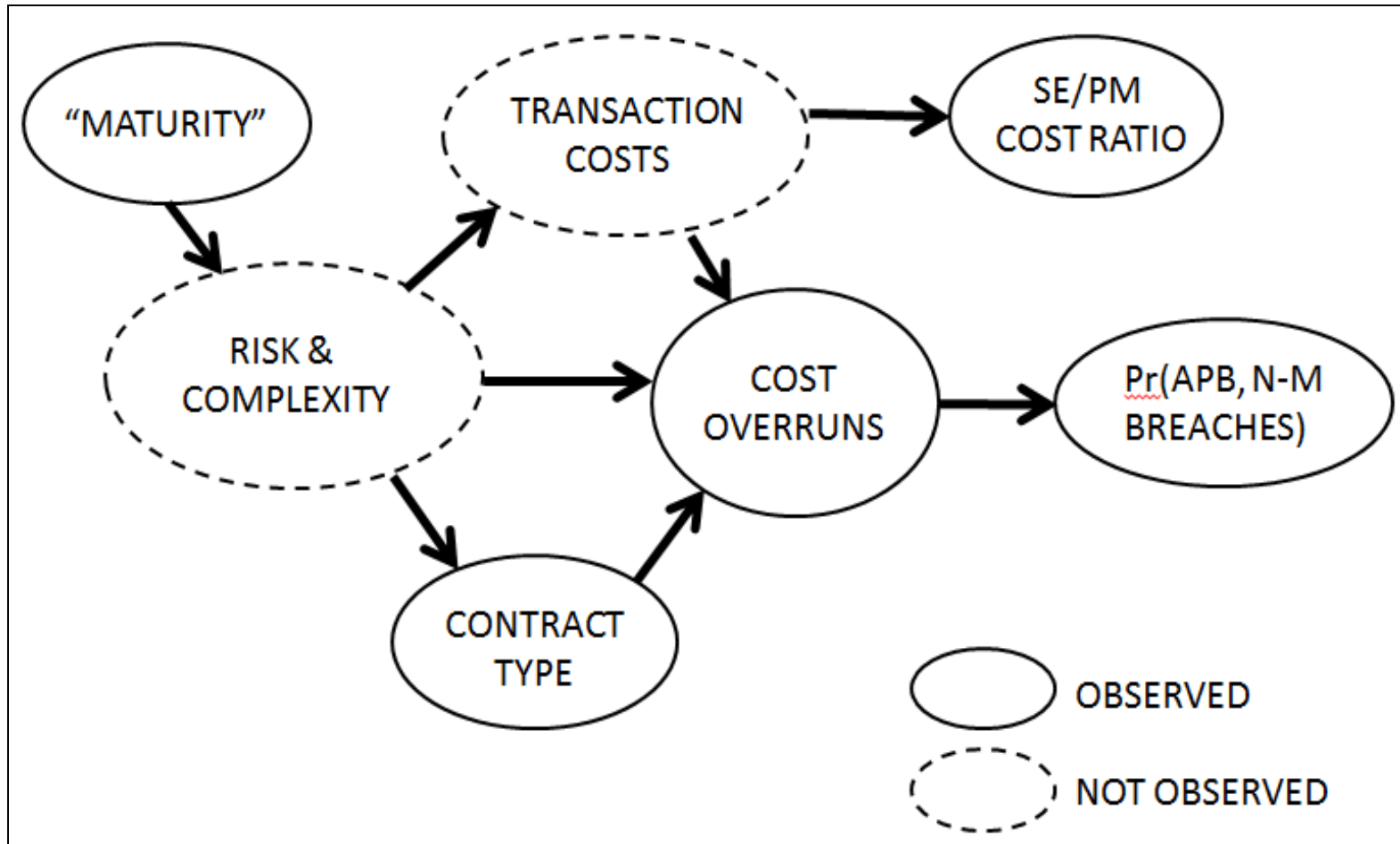
Relationships

- A 2006 RAND study established that MDAP SE/PM costs vary between programs depending on the program type (Stem, Boito, and Younossi, 2006)
- Angelis et al. (2008) suggested using the SE/PM cost as a proxy for transaction costs to examine the relationship between transaction costs and cost overruns.
- Biggs (2013) showed that as the EAC SE/PM cost ratio rises there is a statistically significant corresponding increase in the probability of a cost threshold breach occurring.

SE/PM ratio

$$\text{SE / PM Cost Ratio} = \frac{\text{SE / PM Costs}}{\text{Total Cost}}$$

Interactions



Data Sources

- Selected acquisition reports (SAR)
 - Cost threshold breaches
 - Program maturity (time since program initiation at Milestone B)
- Cost and software data reporting system (CSDR)
 - SE and PM costs
 - Type of contract
- A total of 32 MDAPs representing Air Force, Army, Navy, and Joint programs since 1988.

Possible Relationships

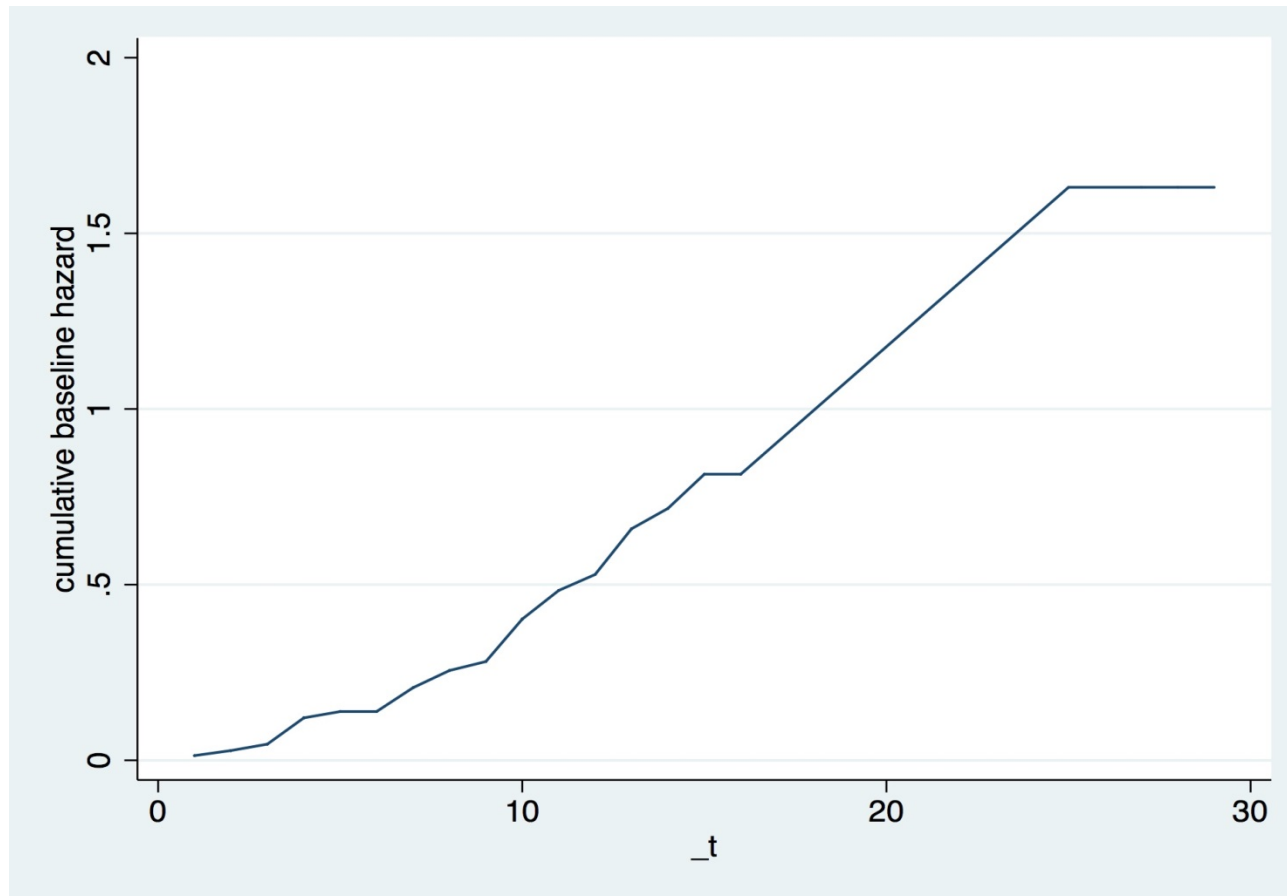
- Relationship between transaction costs (using the SE/PM cost ratio as a proxy) and the likelihood of cost breaches experienced by a program
 - Survival model looks at the hazard of cost breaches over program maturity time
 - Focus on Nunn-McCurdy breaches

Cox-Relative Hazard

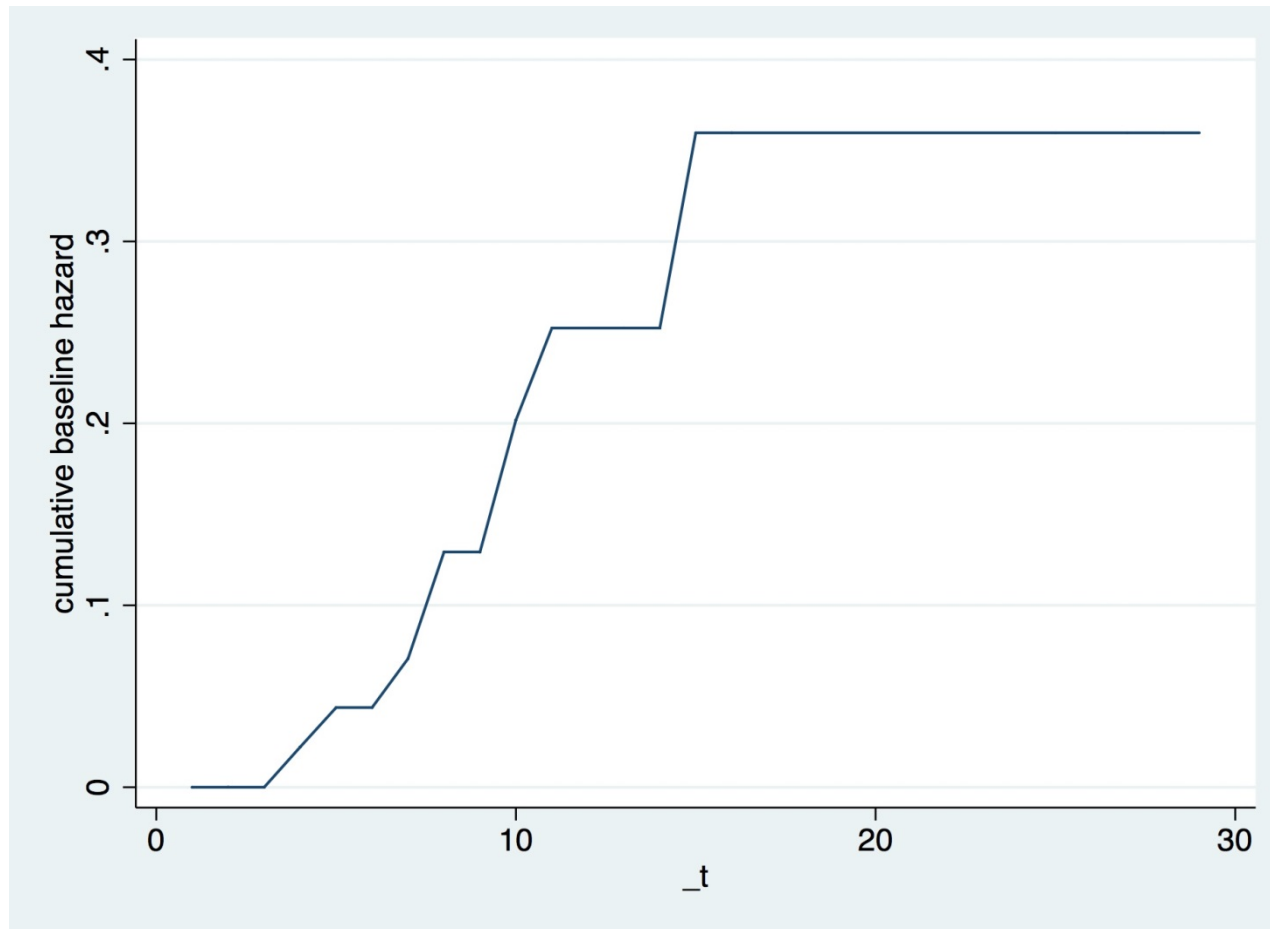
$$h_j(t) = h_0(t)\exp(x_j\beta_x)$$

The hazard a particular subject j faces at time t is a function of the baseline hazard modified proportionally by the vector of regression coefficients β_x

Cumulative Risk of APB Breach



Cumulative Risk of Nunn-McCurdy Breach



Significant Results

- APB breaches
 - A one percentage point increase in estimated SEPM at completion increases the risk of breach by 3-5%
 - The estimated impact is reduced in the model with to date SEPM, where it is about 2% when we do not control for contract type
 - Cost-plus programs are two to three times more likely to experience a cost breach

Significant Results

- Nunn-McCurdy breaches
 - In the model where we do not control for contract type, breaches are about 4% more likely per one percentage point increase in SEPM estimate at completion

Conclusion

- It seems reasonable to assume that higher SEPM ratios can be associated with more complex and risky programs.
- Our results suggest that the SEPM ratio is a promising measure of the likelihood that such programs will experience a cost breach.
- Program managers and others interested in controlling cost growth in DoD programs should consider using the SEPM ratio as an early indicator of the risk of a cost breach.