

AWARD NUMBER: W81XWH-07E-0329

TITLE: Breast Cancer Epidemiology in Puerto Rico

PRINCIPAL INVESTIGATOR: Dr. Cruz Nazario, Ph.D.

CONTRACTING ORGANIZATION:

University of Puerto Rico, Río Piedras

San Juan, Puerto Rico 00925

REPORT DATE: August 2014

TYPE OF REPORT: Final Report

PREPARED FOR:

U.S. Army Medical Research and Materiel Command
Fort Detrick, Maryland 21702-5012

DISTRIBUTION STATEMENT: Approved for Public Release;
Distribution Unlimited

The views, opinions and/or findings contained in this report are those of the author(s) and should not be construed as an official Department of the Army position, policy or decision unless so designated by other documentation.

REPORT DOCUMENTATION PAGE

Form Approved
OMB No. 0704-0188

Public reporting burden for this collection of information is estimated to average 1 hour per response, including the time for reviewing instructions, searching existing data sources, gathering and maintaining the data needed, and completing and reviewing this collection of information. Send comments regarding this burden estimate or any other aspect of this collection of information, including suggestions for reducing this burden to Department of Defense, Washington Headquarters Services, Directorate for Information Operations and Reports (0704-0188), 1215 Jefferson Davis Highway, Suite 1204, Arlington, VA 22202-4302. Respondents should be aware that notwithstanding any other provision of law, no person shall be subject to any penalty for failing to comply with a collection of information if it does not display a currently valid OMB control number. **PLEASE DO NOT RETURN YOUR FORM TO THE ABOVE ADDRESS.**

1. REPORT DATE N & b \ Á 2014		2. REPORT TYPE Final Report		3. DATES COVERED 1 Ju^æ 2007 to 3F Rá]Á 2014	
4. TITLE AND SUBTITLE BREAST CANCER EPIDEMIOLOGY IN PUERTO RICO				5a. CONTRACT NUMBER .	
				5b. GRANT NUMBER K, %A K < I \$ + % \$ ' & .	
				5c. PROGRAM ELEMENT NUMBER	
6. AUTHOR(S) Cruz Nazario, PhD, PI Minority Institution Jo Freudenheim, PhD, PI, Mentoring Institution E-Mail: cruz.nazario@upr.edu				5d. PROJECT NUMBER	
				5e. TASK NUMBER	
				5f. WORK UNIT NUMBER	
7. PERFORMING ORGANIZATION NAME(S) AND ADDRESS(ES) University of Puerto Rico, San Juan San Juan, PR 00936-5067				8. PERFORMING ORGANIZATION REPORT NUMBER	
9. SPONSORING / MONITORING AGENCY NAME(S) AND ADDRESS(ES) U.S. Army Medical Research and Materiel Command Fort Detrick, Maryland 21702-5012				10. SPONSOR/MONITOR'S ACRONYM(S)	
				11. SPONSOR/MONITOR'S REPORT NUMBER(S)	
12. DISTRIBUTION / AVAILABILITY STATEMENT Approved for Public Release; Distribution Unlimited					
13. SUPPLEMENTARY NOTES					
14. ABSTRACT: The Breast Cancer Epidemiology in Puerto Rico project had two major goals: training researchers from a minority academic institution and developing the infrastructure to design and conduct a population based pilot study of breast cancer in Puerto Rico. All investigators from the University of Puerto Rico have acquired new expertise or have strengthened their skills thru weekly conference calls, formal academic training and direct involvement in study design, instruments, quality control processes, data analysis, presentations and manuscripts preparation. A population based case control study was designed to evaluate risk factors for breast cancer among Hispanic women living in the San Juan Metropolitan of Puerto Rico. Breast cancer cases were identified from the Puerto Rico Central Cancer Registry and patient lists from hospitals and physician offices in the Metropolitan San Juan Area. Of 1809 referrals of breast cancer cases, 442 met the eligibility criteria and 317 (72%) agreed to participate and complete the interview and clinical evaluation. Controls were selected from a probabilistic sample of women in the same age groups that lived in the same municipalities as the cases. During the recruitment 1,136 households were visited, 538 women were eligible and 348 (65%) agreed to participate.					
15. SUBJECT TERMS Breast cancer, population-based study, epidemiology, Hispanics					
16. SECURITY CLASSIFICATION OF:			17. LIMITATION OF ABSTRACT UU	18. NUMBER OF PAGES 40	19a. NAME OF RESPONSIBLE PERSON USAMRMC
a. REPORT U	b. ABSTRACT U	c. THIS PAGE U			19b. TELEPHONE NUMBER (include area code)

Table of Contents

	<u>Page</u>
1. Introduction.....	4
2. Keywords.....	5
3. Overall Project Summary.....	5
4. Key Research Accomplishments.....	15
5. Conclusion.....	15
6. Publications, Abstracts, and Presentations.....	16
7. Inventions, Patents and Licenses.....	16
8. Reportable Outcomes.....	16
9. Other Achievements.....	16
10. References.....	18
11. Appendices.....	18

1. INTRODUCTION:

Understanding breast cancer epidemiology in Puerto Rico in particular is important for two different reasons: to allow for better prevention and control among Puerto Rican women if modifiable risk factors are and also to provide insight into breast cancer epidemiology generally because of the unique characteristics of exposures for Puerto Rican women. In Puerto Rico, age-adjusted rates of breast cancer are less than those in the continental United States¹. On the other hand, the age-adjusted (US 2000 Standard Population) incidence rate of breast cancer has been increasing among Puerto Ricans at an average of +1.3%, ($p < 0.05$) per year from 1987 to 2010². In contrast, the overall breast cancer incidence rates did not change significantly among Non-Hispanic White in US from 2003 to 2007³. The reasons for these differences are not known but could be due to changing lifestyles. Historically low rates in Puerto Rico are interesting in that a number of adverse risk factors are more common for women in Puerto Rico than in the US. Among the 52 US states and territories, Puerto Rico is among the worst for overweight and obesity, physical inactivity and low fruit and vegetable intake. Because of this combination of low overall rates, rapid increase in rates and high rate of exposure to some breast cancer risk factors, Puerto Rico is an ideal location to study breast cancer epidemiology. The paradoxical finding of high rates of exposure and lower disease rates likely means that there is wider variation in genetic and exogenous exposures in Puerto Rico than in other, more studied populations. The Puerto Rican population then provides an excellent opportunity to investigate both early and adult risk factors because of these changes in exposures over time.

The Breast Cancer Epidemiology in Puerto Rico project funded by BC060131 BCRP HBCU/MI Partnership Training Award had two mayor goals:

- To train and develop researchers in breast cancer at the minority institution
- To design and conduct a pilot case-control breast cancer study among Puerto Rican women.

The first mayor overall goal was to develop a team of independent investigators with the necessary skills to build up a program of breast cancer research in Puerto Rico. To accomplish this goal, researchers from the University of Puerto Rico obtained formal

training in cancer epidemiology. They have presented preliminary results in conferences and scientific meetings. Investigators from the minority institution have networked with other scientist and continue to meet to analyze the collected data with emphasis on publication of study results.

For the second goal, we designed a population based case control study for which 665 women 30-79 years of age, residents of San Juan, Bayamón, Guaynabo and Carolina, were enrolled. Cases were women with incident, primary, and pathologically confirmed breast cancer with no history of previous cancer other than non-melanoma skin cancer. Controls were randomly selected from females living in the same geographical area as of the breast cancer cases, of the same age range and with no history of previous cancer other than non-melanoma skin cancer. The data collected from cases and controls has been used and will continue to be analyzed to examine adult and childhood factors in relation to risk of breast cancer in this understudied population of Puerto Rican women.

2. Keywords: Breast cancer, Hispanics, population-based research, case-control, epidemiology

3. Overall Project Summary

3.1 Training researchers from the University of Puerto Rico

The training of investigators was an important goal in this project. Five investigators from the University of Puerto Rico, a minority institution, have been closely involved in the training project. The investigators from the University of Puerto Rico were: (1) Cruz Maria Nazario, professor of epidemiology who has been the PI for the minority institution; (2) Michelle Schelske-Santos, professor of nutrition, who has led the development of the dietary questionnaires as well as the skin color measurements with the colorimeter; (3) Farah Ramirez Marrero, professor of exercise science, who was involved in the development of the physical activity questionnaires; (4) Imar Mansilla Rivera, professor of environmental health involved in the assessment of environmental exposures based on residential location; (5) Rosa Rosario, associate professor of epidemiology involved in the methodological aspects of sample selection of the controls as well as sun exposure and occupational factors; and (6) Johan Hernández, project manager, that has been involved in development of quality control and quality assurance

protocols (clinical and survey) to maintain high scientific standard as well as in the project's recruitment strategies. She has supervised research assistants and graduate students.

Investigators have participated in activities focused in achieving the following aims:

- To develop expertise in breast cancer epidemiology, especially in the areas of interest of this study.
- To understand cutting edge developments in breast cancer in order to design future studies to test new hypothesis.
- To develop needed capability and infrastructure particularly for the implementation and conduct of a breast cancer study as well as for future studies.

In order to meet the training goals during the award, the investigators from the University of Puerto Rico participated in a number of academic courses, workshops, conferences and scientific activities. Details of these activities have been previously reported in the annual and biannual reports submitted to the US Army Medical Research and Materiel Command (USAMRMC). A list with the training activities is included in Appendix A.

3.2. Communication strategies

Investigators met weekly by phone with Dr. Freudenheim, to discuss methodological issues, study designs, new ideas for research on breast cancer, preliminary findings and observations, and to deliberate the implementation and day-to-day operations of the case-control study. Notes from the telephone meetings were prepared by Dr. Jo Freudenheim and sent to each member of the team via email after each meeting.

To develop the research infrastructure for an epidemiological study, researchers from the University of Puerto Rico received specific training in the development of protocols for case and control ascertainment, blood collection, and for the storage and processing of biological specimens. In addition to weekly conference calls, Dr. Jo Freudenheim visited the University of Puerto Rico in October 2007 to discuss the development of the protocols and the questionnaire. She also met with University of Puerto Rico researches

during scientific meetings and conferences abroad. In April 2008, Michelle Shelske-Santos, Cruz María Nazario, and Johan Hernández visited University of New York at Buffalo to discuss issues regarding the nutrition questionnaire and met with Dr. Freudenheim and other experts in nutrition epidemiology at the mentoring institution.

One milestone was the capability of the research team to maintain close and frequent communication during the award period to discuss relevant issues regarding the study protocol such as development of the study protocol, develop the study questionnaire, recruitment, interview process, analysis, publication and other.

The clinical research infrastructure developed through weekly conferences between key personnel in the two institutions was complemented with the real time visit to Roswell Park Cancer Institute to agree and coordinate biological specimen collection, processing, storage, and shipping from the University of Puerto Rico Medical Sciences Campus to the University at Buffalo. Lisa Carter from Roswell Park Cancer Institute visited the University of Puerto Rico and evaluated the clinical protocol in June 2007. Nilda González, medical technologist from the Puerto Rico Clinical and Translational Research Consortium (PRCTRC), University of Puerto Rico, visited Roswell Park Cancer Institute in April 2008.

3.3 Specific trainings

Researchers from the University of Puerto Rico, acquired specific training in the epidemiology of breast cancer through participation in congress and scientific meetings such as IARC 2007 in Washington, DC (Cruz María Nazario and Farah A. Ramírez); AACR 2008 in San Diego, CA (Cruz María Nazario, Michelle Santos, Farah A. Ramírez and Jo Freudenheim; John Hopkins Graduate Summer Institute 2007 at the Bloomberg School of Public Health (Michelle Shelske-Santos: 2 courses in epidemiology); Imar Mansilla took an Introduction to Epidemiology course at the UPR-MSU Graduate School of Public Health, and course in Environmental Epidemiology at the Ohio State University (2007) (Appendix B)

The training of minority institution researchers also included the process to develop interview procedures for cases and controls and to complete the comprehensive epidemiological questionnaire for the population-based case-control study of breast cancer including measurement of reliability and relative validity. A pilot study in 100 breast cancer cases and 100 population controls was designed to test case and control ascertainment procedures, to pilot the interviews and develop new procedures when needed, to estimate response rates for participation and blood donation among cases and control, to determine availability of tumor tissue for cases and to test procedures for questionnaire processing and for handling and storage of biological specimens

As a result of these training activities, researchers from the University of Puerto Rico, have assumed leading roles in the development of various manuscripts. For instance, Dr. Shelske-Santos is currently working on a paper that describes the macronutrient intake in the Puerto Rican diet using the information of food items from this study. Dr. Ramírez-Marrero is working on a manuscript on body mass index and its relation to breast cancer in Puerto Rico, as well as the association of breast cancer and lifetime history of physical activity. Dr. Rosario has the leading role on an article on sun exposure and breast cancer. Johan Hernández is working with Dr. Nazario and Dr. Rosario on a paper describing the recruitment methods of the study. Dr. Nazario and Dr. Freudenheim are working on the preliminary analysis of ancestry data and markers of breast cancer in this Hispanic population.

In addition, there have been a number of students who have benefitted from the breast cancer study. They have been trained in recruitment strategies, and also have collaborated in certain aspects of data collection and data cleaning. Several students have used the breast cancer study database for their Master in Science dissertation. For example, Dr. Mansilla and Dr. Rosario are mentors of a graduate student interested in residential proximity during adolescence to energy generating industries. Dr. Rosario mentored a theses on sun exposure and breast cancer risk and is also mentoring a graduate student interested in exploring secondary smoke exposure in this data base. A student in the Master in Science in Epidemiology analyzed the use of metformin and breast cancer risk

using the data base from the case-control study. One student evaluated BMI, biological markers and breast cancer risk for her MS degree and is actually completing a PhD in Epidemiology in the US. Dr. Nazario is mentoring a MS student evaluating alcohol consumption and breast cancer risk. Two students received their master degree after completing secondary analysis evaluating physical activity and breast cancer under the mentoring of Dr. Farah Ramírez-Marrero. Dr. Freudenheim mentored a dissertation where differences between the Puerto Rican diet, Hispanic American diet, and the diet of Puerto Ricans living in the United States were evaluated. Dr. Freudenheim has been the fundamental mentor to all the scientific works mentioned above. Students have presented posters with their research outcome in different scientific conferences.

All project investigators have acquired new expertise or have strengthened their skills as a direct outcome of participating in the BCRP HBCU/MI Partnership Training Award, thru the weekly conference calls, the formal academic training and the direct and practical involvement in study design, the development of measuring instruments, their participation in quality control processes, preliminary data analysis and publications. Development of expertise is an ongoing process that will continue during the course of their scientific career and they advance their knowledge of breast cancer epidemiology. Investigators of the project “The epidemiology of breast cancer in Puerto Rico” have presented posters and attended conferences to disseminate preliminary results. All researchers attended the “Building Network Symposium” and the Era of Hope Meetings.

3.4 The second mayor goal was to design, and implement a case control study.

The specific aims of the case-control study of breast cancer in Puerto Rico were: to examine dietary risk factors in relation to breast cancer; to examine other established risk factors such as lifetime weight gain, physical activity, alcohol consumption, and reproductive history among Puerto Ricans in relation to breast cancer risk; and to examine factors related to early life exposure including birth weight, adult height, childhood diet, physical activity, environmental factors, and residential history as a proxy for environmental exposure.

One important challenge was to obtain and maintain approval of the study from all study academic institutions (University of Puerto Rico and University at Buffalo) and from the Human Subjects Protection Scientist of the CDMRP IRB during all years of the award. Also the IRB continuation reports were submitted as required (USAMRMC Human Research Protection Office). The subject protocol for the Breast Cancer Study was initially approved by the Institutional Review Board (IRB) of the Medical Sciences Campus, University of Puerto Rico on May 8, 2009. The protocol was reviewed and approved by the U.S. Army Medical Research and Materiel Command (USAMRMC), Office of Research Protections (ORP), Human Research Protection Office (HRPO) on June 2009. The details of the protocol and approval information were reported in the second annual report. Hospitals and private physician that collaborated with the project also required the approval of the study protocol by their Board of Directors. The principal source of breast cancer cases, the Puerto Rico Central Cancer Registry, also required approval of the study protocol. Working with different institutional formats and requisites presented a challenge. These challenges were unraveled by the strong collaboration developed with all the institutions.

3.5 Recruitment and data collection.

The recruitment of study participants and data collection for the study protocol started in November 2009, after full approval of IRB. We began interviewing cases and controls at that time. Participant recruitment ended in May 2014. During June 2014, we worked on quality control of collected data, and completed the final interviews. Data cleaning and data analysis are ongoing.

The estimation of sample size and power was based on the Minimum Detectable Risks (MDR) for a sample of 500 cases and 500 controls, with a two-sided p-value set at 0.05 and power of 0.80, assuming that one third of women will be premenopausal at interview. Odds ratios on the order of 1.5 to 2.0 are detectable. The challenge to reach the sample size was enormous. During the pilot trial we had estimated a refusal rate of 13%, but this estimate was far from the observed refusal rate during the implementation of the case-control study. A refusal rate of 35% from potential and eligible breast cancer patients and

28% refusal rate were observed among potential and eligible population controls. The observed refusal rates implied an increased amount of time and effort to reach the proposed sample size, which we could not comply with. For each completed participant, 6 to 8 telephone calls were made to schedule and remind them of their appointment, to reschedule appointments, and motivate potential cases and controls to participate

Case ascertainment and recruitment

Breast cancer cases were identified from the Puerto Rico Central Cancer Registry and patient lists from hospitals and physician offices in the Metropolitan San Juan Area. In order to meet the case ascertainment and recruitment goals, from November 2009 to May 2014, the project staff established links of collaboration with hospitals and physicians to identify breast cancer cases. Twenty eight primary physicians (or referring physicians) and five hospitals (hospitals with oncology departments) were contacted and agreed to identify and coordinate the recruitment of breast cancer cases. The process of identifying cases is detailed in Appendix C. The sample size estimation and the recruitment strategy to reach the goal,

During the recruitment process we received 1,809 referrals of potential breast cancer cases; but in 140 cases the provided contact information was either incomplete, missing or incorrect (i.e., disconnected phone number). The project staff contacted 1,669 breast cancer cases and evaluated their eligibility to participate in the study. Of these, the vast majority were not eligible. Of the 1227 breast cancer cases contacted that were not eligible, 871 had a different residential area (not within the target study areas) than the one stated in the Cancer Registry data bank or in the physician record. In 282 breast cancer cases, further evaluation of the date of diagnosis, or the tumor status (not been a primary breast cancer) made them ineligible for the study. The age and other miscellaneous reasons excluded 74 breast cancer cases. Only 442 breast cancer cases (27%) met the eligibility requirements: incident, primary, and pathologically confirmed breast cancer with no history of previous cancer, aged 30 to 79, and living in San Juan, Bayamón, Guaynabo or Carolina municipalities in the San Juan metropolitan area. Of those, 317 (72%) agreed to participate and completed the interview and clinical evaluation. (Appendix D).

Control ascertainment and recruitment

Controls were selected from a probabilistic sample of women aged 30-79, who were residents of San Juan, Bayamón, Guaynabo and Carolina at moment of recruitment. Controls were identified from participants in the *Estudio Continuo de Salud* (ECS), a National Health Survey in Puerto Rico, which was a random sample of Puerto Ricans⁴. The process used to identify the controls is detailed in Appendix E.

During the recruitment of controls 1,136 households were visited. In these households, 720 women were contacted. Of these 720 contacted women, 538 were eligible to participate in the study and 348 (65%) agreed to participate and complete the interview and clinical evaluation (Appendix F).

For both cases and controls, we monitored ascertainment and recruitment procedures to optimize response rates and to maintain the population-based format of the study.

The recruitment process was somewhat slow during some time periods due to several situations beyond the control of the researchers. There were three situations that affected the most the recruitment process. First, the Puerto Rico Cancer Registry, which was the primary source of breast cancer case ascertainment, underwent an administrative restructuring process, interrupting project collaboration during some months. This process delayed the evaluation of pathology reports that allowed us to identify eligible breast cancer cases for the study, slowing the recruitment process and the scheduling of interviews. Trying to avoid interviewers' bias on the status of the study participant (case or control) the recruitment of controls was also halted. Second, the Clinical Research Center, where we conducted the interviews, does not operate for 3 weeks every December: there were also, workers' union lockouts as well as administrative shutdown of operation. Lastly, during the past years heavy rains from August to November delayed and interrupted the recruitment process as well as the scheduling of the interviews. We were fortunate to request and obtain no-costs extensions that made it possible to continue with recruitment. These situations and other were reported in past reports. In spite of the difficulties inherent in the development of a new research infrastructure, we

were able to contact and evaluate the eligibility of more than 1000 cases and 1000 controls.

3.6 Preliminary analysis

We are in the process of data verification and quality control of the data base. Of the total study sample we have a preliminary analysis of 617 study participants. The preliminary analysis is presented a table included as Appendix G.

In the preliminary analysis, controls made up 53% of the sample and the average age of the total study group was 56 years of age (± 12.6 years). Almost half of the study population had a technical or bachelor's degree, the same proportion of the group stated they were married or living with a partner at interview. A very large percentage (71%), was already menopausal at interview, as expected by the age criteria for inclusion. Eighty eight percent (88%) of the participants had their first pregnancy before age 31, with 55% of then having 3 or more children. A considerable proportion (80%) of the participants had a measured BMI classified as overweight or obese.

Another interesting finding is the relationship between sun exposure and breast cancer. High sun exposure was associated with a protective benefit against breast cancer after controlling for age, education, and sun screen use at some point in the lifetime. A higher percentage of breast cancer cases were in the lowest sun exposure category. Low sun exposure, estimated by skin pigmentation difference, was associated with increased risk of breast cancer (OR adjusted=2.27; 95% CI: 1.50, 3.44). The adjusted OR for premenopausal women was 1.62 (95% CI = 0.86 to 3.03) and for postmenopausal women was 2.60 (95% CI =1.48 to 4.56). This preliminary analysis supports the hypothesis that sun exposure may contribute to a reduction in the risk of breast cancer.

3.7 Manuscripts: No manuscripts have been yet submitted for publication.

Several manuscripts are in preparation. They include an examination of the foods which contribute to the intake of nutrients of interest in the Puerto Rican diet. Another paper in progress is examining body mass index, body fat distribution and other factors related to

body fatness. There is new understanding that the impact of BMI on health differs by race/ethnicity. Understanding BMI and possible differences in BMI distribution between breast cancer cases and controls among Puerto Rican women has considerable potential for public health interventions. Finally, preparation is also underway of a manuscript to describe the findings related to sun exposure and breast cancer risk.

Because the data collection has just been completed, we are still in the process of writing research reports. We expect to explore this data set for a long time to come. At this time, the following papers are in progress:

1. Truesdell E, Schelske-Santos M, Nazario CM, Rosario R, Mansilla-Rivera I, Ramírez-Marrero F, Millen AE, McCann SE, Freudenheim JL. Contribution of foods to intake of macronutrients in the Puerto Rican diet.
2. Rosario-Rosado R, Piovanetti P, Venegas H, Schelske-Santos M, Hernández J, Mansilla-Rivera I, Ramírez-Marrero F, Nazario CM, Freudenheim JL. Association between lifetime sun exposure and breast cancer among Puerto Rican women.
3. Ramírez-Marrero F, Nazario CM, Schelske-Santos M, Rosario R, Mansilla-Rivera I, Hernández J, Freudenheim JL. Anthropometry and Breast Cancer Risk among Puerto Rican Women.

The following abstracts have been presented at regional, national and international conferences:

1. Nazario CM, Freudenheim J, Hernández J, Ramírez-Marrero F, Mansilla-Rivera I, Schelske-Santos M, Rosario R. Breast cancer epidemiology in Puerto Rico. Era of Hope meeting, Orlando, FL, 2011.
2. Schelske-Santos M, Freudenheim J, Mansilla-Rivera I, McCann S, Hernández J, Ramírez-Marrero F, Rosario Rosado RV, Nazario CM. The Hispanic dietary mosaic: Defining the diet of women in Puerto Rico in the Atabey Study. Annual Meeting American Society for Nutrition, Boston, April, 2013.
3. Piovanetti P, Rosario-Rosado R, Venegas H, Schelske-Santos M, Hernández J, Mansilla-Rivera I, Ramírez-Marrero F, Nazario CM, Freudenheim JL. Association

between lifetime sun exposure and breast cancer: Preliminary data from the Atabey Case-Control Study. IV Conferencia Puertorriqueña de Salud Pública, San Juan, 2013.

4. Hernández J, Calderón I, Rosario R, Nazario CM, Mansilla-Rivera I, Schelske-Santos M, Ramírez-Marrero F, Ramos G, Robles L, Freudenheim J. Recruitment challenges in the Atabey Study. IV Conferencia Puertorriqueña de Salud Pública, San Juan, 2013.

5. Rosario-Rosado R, Piovanelli P, Schleske-Santos M, Hernández J, Mansilla-Rivera I, Ramírez-Marrero F, Venegas H, Nie J, Nazario CM, Freudenheim JL. Sun exposure and the risk of breast cancer among Hispanic women in Puerto Rico: The Atabey Study. National Cancer Institute/Consortium of Universities for Global Health Symposium on Global Cancer Research, Washington, DC, May, 2014.

4. Key research accomplishment

- Training investigators from the University of Puerto Rico
- Participation of investigators from the University of Puerto Rico in formal academic summer courses
- University of Puerto Rico's IRB approval of study protocol in coordination with various institutions that required independent informed consent documents
- Development of a complex questionnaire that was electronically administered and data saved
- Recruitment of breast cancer cases using different patient data sources
- Developing and implementing a recruitment strategy for population controls
- Preliminary results and findings have been presented in scientific meetings and conferences, locally and abroad.

5. Conclusion

The Breast Cancer Epidemiology in Puerto Rico project had two major goals: training researchers from a minority academic institution and developing the infrastructure to design and conduct a population based pilot study of breast cancer in Puerto Rico. All

investigators from the University of Puerto Rico have acquired new expertise or have strengthened their skills as a direct outcome of participating in the BCRP HBCU/MI Partnership Training Award, thru weekly conference calls, formal academic training, practical involvement in study design, developing measuring instruments, participating in quality control processes, preliminary data analysis and manuscripts preparations.

For the second major goal, a population based case control study was designed to evaluate risk factors for breast cancer among Hispanic women living in the San Juan Metropolitan of Puerto Rico. Breast cancer cases were identified from the Puerto Rico Central Cancer Registry and patient lists from hospitals and physician offices in the Metropolitan San Juan Area. Of the 1809 referrals of potential breast cancer cases, 1,669 had contact information and of those 442 met the eligibility requirements: incident, primary, and pathologically confirmed breast cancer with no history of previous cancer, aged 30 to 79, and living in San Juan, Bayamón, Guaynabo or Carolina municipalities in the San Juan metropolitan area. Of those, 317 (72%) agreed to participate and complete the interview and clinical evaluation. Controls were selected from a probabilistic sample of women aged 30-79, who were residents of San Juan, Bayamón, Guaynabo and Carolina at moment of recruitment. During the recruitment of controls 1,136 households were visited and 720 women were contacted. Of these women, 538 were eligible to participate in the study and 348 (65%) agreed to participate and complete the interview and clinical evaluation.

6. Publications. Nothing to report

7. Inventions, patents and licenses: Nothing to report

8. Reportable outcomes: Nothing to report

9. Other achievements:

Serum depository: A biological sample was collected from all study participants that agreed to donate blood or saliva for future studies. We collected a fasting blood sample

that was aliquoted to tubes of 0.5 ml for serum plasma, red blood cells and buffy coat at the UPR Clinical Research Center and then sent to Roswell Park Cancer Institute and University of Buffalo for long term storage. Samples were ID coded with scannable bar codes.

Sun exposure index, measured using a colorimeter (chroma-meter -Minolta CR-400) provided two different skin pigmentation values: the facultative pigmentation (sun-exposed dorsal area of the left hand between the thumb and index finger) and the constitutive pigmentation (relatively unexposed interior area of the upper left arm). The standardized difference in the average of three measurements of the facultative and constitutive skin pigmentation was used to calculate a sun exposure index (SEI).

Application for funding: Project investigators have written and submitted letters of intent, pre-proposals and a full proposal to different funding agencies. Planning and proposal writing continues.

Submitted proposals:

NIH Challenge Grants in Health and Science Research entitled Breast Cancer Epidemiology in Puerto Rico: Genetics and Environment (April 2009).

“Caring for the spouse and children caregivers to improve the quality of life of young breast cancer survivors in Puerto Rico: Support and Educational Awareness Program”. CDC- RFA-DP11-1111, Developing Support and Educational Awareness for Young (<45) Breast Cancer Survivors in the United States (U58).

Approved proposal:

“Preparándonos para vencer: Programa para identificar las necesidades de información y apoyo para las mujeres sobrevivientes de cáncer de mama menores de 50 años y su pareja-cuidadora en Puerto Rico. Proposal, submitted by Johan Hernández, was approved and supported by Susan G. Komen-Puerto Rico (2012-2013 cycle).

10. References

1. Howlader N, Noone AM, Krapcho M, Garshell J, Miller D, Altekruse SF, Kosary CL, Yu M, Ruhl J, Tatalovich Z, Mariotto A, Lewis DR, Chen HS, Feuer EJ, Cronin KA (eds). SEER Cancer Statistics Review, 1975-2011, National Cancer Institute. Bethesda, MD, http://seer.cancer.gov/csr/1975_2011/, based on November 2013 SEER data submission, posted to the SEER web site, April 2014.
2. Cáncer in Puerto Rico, 2006-2010. Tortolero-Luna G, Zavala-Zegarra D, Pérez-Ríos N, Torres-Cintrón CR, Ortiz-Ortiz KJ, Traverso-Ortiz M, Román-Ruiz Y, Veguilla-Rosario I, Vázquez-Cubano N, Merced-Vélez MF, Ojeda-Reyes G, Hayes-Vélez FJ, Ramos-Cordero M, López-Rodríguez A, Pérez-Rosa N (2013). Puerto Rico Central Cancer Registry. San Juan, PR.
3. Breast cancer incidence rates in US women are no longer declining. Carol DeSantis, Nadia Howlader, Kathleen A. Cronin, Ahmedin Jemal. *Cancer Epidemiol Biomarkers Prev*; 20(5); 733–9. 2011
4. Estudio Continuo de Salud. Ramos, G. Departamento de Bioestadística y Epidemiología, Escuela Graduada de Salud Pública, Recinto de Ciencias Médicas, Universidad de Puerto Rico. Departamento de Salud de Puerto Rico (2002)

11. Appendices

- Training study investigators (Appendix A).
- Summer courses (Appendix B)
- Process for identifying cases (Appendix C)
- Flowchart describing case recruitment data (Appendix D)
- Process for identifying control (Appendix E)
- Flowchart describing control recruitment data (Appendix F)
- Table with preliminary data analysis (Appendix G)

Appendix A
Training study investigators

Breast Cancer Epidemiology in Puerto Rico
Annual Report (1)
June 2007 to June 2008

Imar Mansilla Rivera

1. Training and meeting
 - a. Registered at the 19th Conference of the International Society for Environmental Epidemiology (ISEE), held in Mexico City, September 5 – 9, 2007.
 - Attended a pre-conference workshop on “Children’s Vulnerability to Pollution”
 - Attended a training session on “Cancer susceptibility and environmental interactions”
 - Attended several oral and poster presentations on topics such as environmental exposures at different stages of development, health effects of various groups of contaminants (e.g. air pollutants, trace metals, persistent chlorinated and brominated compounds)
 - Presented a poster on “Arsenic exposure from fish consumption in Vieques, Puerto Rico”, sponsored by the University of Puerto Rico-Roswell Park Cancer Institute Partnership (NIH/NCI P20 CA096257).
 - b. Audited conferences on design and analysis of descriptive, cohort, case-control, and experimental studies, as well as confounding factors of epidemiologic studies in the course EPID 6523, Epidemiologic Methodology, September 12 – October 15, 2007.
 - c. Registered at the Building Network Symposium and at the Era of Hope Meeting, held in Baltimore, Maryland, from June 24 – 28, 2008.

Michele Schelske-Santos

1. Training and meeting
 - a. April 12 – 16, 2008 San Diego Convention Center, San Diego, CA 2008 American Association for Cancer Research (AACR) Annual Meeting.
 - b. April 12, 2008, pre-conference to the AACR meeting. Third World Institute for Cancer Research (WICR) Leadership Development Workshop: The Path of Women Who Lead, emphasizing characteristics, knowledge, skills and attitudes of effective female leaders in cancer research and careers. June 24 – 25, 2008 Sheraton Baltimore City Center, Baltimore, MD.
 - c. Congressionally Directed Medical Research Programs, Breast Cancer Research Program, Building Networks Symposium, Facilitating Progress to Eliminate Health Disparities June 25 – 28, 2008. Department of Defense (DOD) Breast Cancer Research Program (BCRP) Era of Hope 2008, Meeting Baltimore Convention Center, Baltimore, MD.

2. Conferences
 - a. April 23, 2008, Dr. Michelle Schelske Santos was invited to give a conference from 9:30a.m. –11:00a.m. titled, *Diet, Nutrition and Cancer Prevention*, to the employees of the Procurement Office, University of Puerto Rico, Rio Piedras, as part of the special activities scheduled for Administrative Assistant's Week (Secretary's Day).
3. Course curriculum and incorporation of technology
 - a. As part of the Biochemistry course (ECDO 4158) for undergraduate nutrition and dietetics students at the University of Puerto Rico, Rio Piedras Campus, Dr. Michelle Schelske Santos integrated an electronic discussion board (in Blackboard) on the subject of Diet, Nutrition and Cancer Prevention, in order for students to explore and dialog the biochemical and nutritional implications of traditional food and alternative nutrition therapies on cancer prevention.
4. Student Mentoring
 - a. Under the mentorship of Dr. Michelle Schelske Santos, two undergraduate students of the Nutrition and Dietetics Program, UPR-Rio Piedras, Jacqueline Martínez-Chaluisant and Dariana Soto-Reyes were accepted for and attended the 2008 Nutrition and Cancer Prevention Research Practicum sponsored by the Nutritional Science Research Group, National Cancer Institute, National Institutes of Health, and the Department of Nutrition at the Clinical Center, National Institutes of Health in Bethesda, Rockville, and Beltsville, MD, held March 17 – 21, 2008. These students competed at the national (USA) level with graduate students and interns, professionals in the health sciences, such as physicians and licensed dietitians; they were the only two undergraduates chosen for the cohort of 40 selected participants.

**Breast Cancer Epidemiology in Puerto Rico
Annual Report (2)
June 2008 to June 2009**

Dr. Cruz M. Nazario

1. Weekly conference call with investigators from Puerto Rico and Dr. Jo Freudenheim from the University at Buffalo.
2. Weekly meeting with project coordinator.
3. Training and meetings
 - a. Attendance to Annual Meetings:
 - i. The Joint Annual Conference of the International Society for Environmental Epidemiology (ISEE) and International Society of Exposure Analysis (ISEA), held in Pasadena, California, from October 12-16, 2008.
 1. I met with epidemiologists participating in the meeting to discuss ideas for future studies on environmental contamination and breast cancer risk.

- ii. Science of Cancer Health Disparities in Racial/Ethnic Minorities and the Medically Underserved workshop sponsored by AACR. (Carefree, Arizona February 3-6, 2009).
 - 1. I was invited to present about *Breast Cancer Research in Puerto Rico* at the pre-meeting workshop Latino Breast Cancer Consortium.

Dr. Farah A. Ramírez-Marrero

- 1. Weekly conference call with investigators from Puerto Rico and Dr. Jo Freudenheim from the University at Buffalo.
- 2. Training and meetings
 - a. Attendance to Annual Meetings:
 - i. **Experimental Biology 2009** in New Orleans, Louisiana (April 18-22)
 - 1. Monday, April 19:
 - a. Session: Obesity, Aging and Cancer
 - 2. Tuesday, April 20:
 - a. Poster: Effects of herbal enzyme bromelain against breast cancer cell line. Paroulek, Jaffe and Rathinavelu. Nova Southeastern Univ.
 - 3. Wednesday, April 21:
 - a. Poster: Molecular mechanism effect of taxotere and ukrain in cell cycle regulating genes in positive and negative breast cancer cell lines. Alokail, Al-Mansouri, Bin Amer. King Saud University, Saudi Arabia.
 - b. Poster: Study of the activity of estrogen response elements present on Pax-5 promoter and their potential role on regulating Pax-5 expression in breast cancer. Faye and Ouellette. University of Moncton, Canada.
 - ii. **American College of Sports Medicine 2009** in Seattle, Washington (May 27-30)
 - 4. Thursday, May 28:
 - a. Session: Exercise interventions in Cancer Survivors: A diverse Perspective
 - i. Effect of physical activity on weight and body composition in breast cancer survivors. Cadmus, Yu, Wiley, Chung, Irwin. Yale University, CT.
 - ii. One-year randomized, controlled trial of strength training in older breast cancer survivors: preliminary findings. Winters-Stone, Reiner, Dobek, Nail, Bennet, and Naik. Oregon Health and Science University, Portland, OR.
 - b. Session: Physical activity, fatigue and pain
 - i. The effects of 12-weeks cross training on fatigue and mood in recent breast cancer survivors. Poudevigne, Wojcik, Lane, Polovich and Simonishvili. Emory University, Atlanta.
 - 5. Friday, May 29:
 - a. Session: Exercise with Cancer Patients

- i. The relationship of physical activity across the lifespan and breast health. Sprod, Hsieh, Carter, Hayward, Schneider. Univ. Northern Colorado, CO.
 - 6. Saturday, May 30:
 - a. Session: Clinical Medicine II – Medical
- i. Effect of comprehensive exercise on lymphedema in breast cancer survivors: a pilot study. Oki, Troumbley, Walker, Plante, Hansen. Univ. of Utah, UT.
- iii. **2009 International Conference on Diet and Activity Methods** in Washington, DC (June 5-7)
 - 1. Friday, June 5:
 - a. Conference: Climate change: interrelationships with diet and physical activity.
 - b. Conference: An integrated assessment of health and climate change impacts of community design.
 - c. Symposium: Measures of the physical activity built environment
 - d. Symposium: Measuring change in diet and physical activity in intervention studies
 - 2. Saturday, June 6:
 - a. Conference: The magnitude of the energy gap and its determinants
 - b. Conference: The energy gap for obesity
 - c. Symposium: Physical activity measurement of individuals
 - d. Symposium: Energy balance: synchronized measures of energy intake and output, and data complexity in physical activity measures
 - e. Dinner meeting with Dr. Jo Freudenheim.
 - 3. Sunday, June 7:
 - a. Symposium: Lessons learned from national surveillance studies on physical activity.

Dr. Michelle Schelske-Santos

- 1. Weekly conference call with Dr. Jo Freudenheim (University at Buffalo) and Puerto Rico investigators team.
- 2. Training and Meetings:
 - i. **Seventh International Conference on Diet and Activity Methods** Hyatt Regency Capitol Hill Washington DC June 4 – 7, 2009
 - 1. Pre-Conference Workshop: Understanding Measurement Error in Diet and Activity Assessment (This conference was very useful in presenting systematic and random measurement errors common to food frequency questionnaires, 24h dietary recalls, physical activity questionnaires and accelerometer measures, in addition to how a variety of statistical models can be applied to collected data to help correct for these errors during data analyses.)
 - 2. Conferences :Climate Change: Interrelationships with Diet and Physical Activity
 - 3. Conferences: Technological Advances in Measuring Diets of Individuals, Dietary Biomarkers: Novel Techniques

4. Conferences: Advances in Coping with Measurement Error in Diet and Physical Activity Measures
5. Conferences: Diet Measurement of Individual Intake: Development of Instruments
6. Conferences: technology demonstration of on line 24h dietary recalls
7. Conferences: Dietary Patterns: Research Challenges and New Methodologic Directions, Energy Gap that Causes Obesity;

This three-day conference was very informative and useful in helping with the concepts of instrument development, validation, and analysis in order to obtain the data necessary to link dietary and physical activity patterns and lifestyles to disease outcomes and prevention. These techniques and potential applications are directly related to the development and validation of our food frequency questionnaire to assess potential exposures related to breast cancer incidence and prevention in our Puerto Rican population.

Dr. Imar Mansilla-Rivera

1. Weekly conference call.
2. Training and meeting
 - a. Attendance to Annual Meetings:
 - i. The Joint Annual Conference of the International Society for Environmental Epidemiology (ISEE) and International Society of Exposure Analysis (ISEA), held in Pasadena, California, from October 12-16, 2008.
 1. Attended a pre-conference workshop on “Ultrafine and fine particulate matter monitoring in exposure and epidemiological studies”.
 2. Attended several oral and poster presentations on topics such as environmental exposures at different stages of development, health effects of various groups of contaminants (e.g. air pollutants, trace metals, persistent chlorinated and brominated compounds).
 3. Also, I met with other researchers working in the area of endocrine disruptor exposures and their health effects (e.g. breast cancer) to exchange ideas for future collaborations and potential studies.

Johan Hernandez, MPH

1. Weekly meeting with principal investigator and other staff project.
2. Training and meeting:
 - a. Attendance to Annual Meetings:
 - i. The American Public Health Association’s 136th Annual Meeting & Exposition: Public Health without Borders, in October 2008.
 1. Attended several conferences and workshop on cancer and epidemiology (Cancer and its Impact on Women's Lives and Health, Cancer Epidemiology I and II and Social Epidemiology: Effects of Race/Ethnicity and Socioeconomic Disparities on Health).

- ii. Science of Cancer Health Disparities in Racial/Ethnic Minorities and the Medically Underserved workshop sponsored by AACR. (Carefree, Arizona February 3-6, 2009).
 - 1. Attended a pre-meeting workshop Latino Breast Cancer Consortium.
 - 2. Attended several conferences on cancer epidemiology.

**Breast Cancer Epidemiology in Puerto Rico
Annual Report (3)
June 2009 to June 2010**

Dr. Cruz M. Nazario

- 1. Weekly conference call with investigators from Puerto Rico and Dr. Jo Freudenheim from the University at Buffalo.
- 2. Weekly meeting with project coordinator.
- 3. Training and meetings:
 - a. The 15th Puerto Rico Breast Cancer Conference, held in San Juan PR, October 2009.
 - i. I attended sessions on breast cancer prevention, screening and histopathology.
 - b. AACR Special Conference in Cancer Epigenetic, held in San Juan PR, January 2010
 - i. I attended sessions on cancer epigenetic and participated in workshop was held to discuss the bioinformatics challenges of whole genome epigenetic analyses.
 - ii. I met with Dr. Jo Freudenheim (Co- investigator and mentor) to discuss relevant issues regarding the study protocol development (recruitment, interview process, biological sample and other).
 - c. The American Association of Cancer Research 101st Annual Meeting, held in Washington DC, April 2010.
 - i. I participated in several sections related to cancer science from basic through clinical and epidemiological research.
 - ii. I met with researchers participating in the meeting to discuss ideas for future studies on breast cancer risk.
 - iii. I met with Dr. Jo Freudenheim (Co- investigator and mentor) and Dr. Theresa J. Miller (Task Manager, Congressionally Directed Medical Research Programs) to discuss relevant issues regarding the study protocol (interview process, biological sample and other)

Dr. Michelle Schelske-Santos

- 1. Weekly conference call with Dr. Jo Freudenheim (University at Buffalo) and Puerto Rico investigators team.
- 2. Training and meetings:
 - a. The Experimental Biology (EB) Annual Meeting in April 2010.
 - i. I participated in several section directly related to dietary, physical activity patterns, lifestyles and Breast Cancer.

Dr. Imar Mansilla-Rivera

1. Weekly conference call.
2. Training and meetings:
 - a. The Joint Annual Conference of the International Society for Environmental Epidemiology (ISEE), held in Dublin, Ireland, from August 25 – 29, 2009.
 - i. I participated in a pre-conference workshop on “DAGviromental Health: Introduction to Causal Diagrams and Their Application in Environmental Epidemiology Research

Johan Hernandez, MPH

1. Weekly meeting with principal investigator and other staff project.
2. Training and meetings:
 - a. The American Public Health Association’s 137th Annual Meeting & Exposition: Water and Public Health, in November 2009.
 - i. I attended several conferences and workshop on cancer epidemiology:
 1. Epidemiology Education –The many faces of epidemiology training in today dynamic and global public health.
 2. Health Disparities and Epidemiology
 3. Cancer Epidemiology Section I
 4. Genetic and Molecular Epidemiology and Breast Cancer Awareness
 5. Screening and Control Innovative Strategies for Reducing Disparities.

**Breast Cancer Epidemiology in Puerto Rico
Annual Report (4)
June 2010 to June 2011**

Dr. Cruz M. Nazario

1. Weekly conference call with investigators from Puerto Rico and Dr. Jo Freudenheim from the University at Buffalo.
2. Weekly meeting with project coordinator.

Dr. Farah Ramirez

1. Weekly conference call with investigators from Puerto Rico and Dr. Jo Freudenheim from the University at Buffalo.
2. Training
 - a. AICR Annual Research Conference on Food, Nutrition, Physical Activity and Cancer, held in Washington, DC from October 21 & 22, 2010
 - i. I attended the following sessions and conferences:
 1. Aging: issues related to diet, physical activity and cancer.
 2. Diet, Physical Activity and Cancer Survivorship.
 3. Diet and Cancer: what cohort studies are telling us
 4. Obesity and cancer: implications for public health
 5. New and Emerging Science: the Microbiome-implications for diet and cancer.

Johan Hernandez, MPH

1. Weekly meeting with principal investigator and other staff project.

2. Training:
 - a. The American Public Health Association's 138 th Annual Meeting & Exposition: Social Justice, Denver, Colorado November 6-11 2010.
 - i. I attended several conferences and workshop on cancer epidemiology:
 1. Cancer Epidemiology Screening and Prevention.
 2. Epidemiology of Breast Cancer
 3. Health Disparities
 4. Poster presentations

**Breast Cancer Epidemiology in Puerto Rico
Annual Report (5)
July 2011 to June 2012**

Dr. Cruz M. Nazario

1. Weekly conference call with investigators from Puerto Rico and Dr. Jo Freudenheim from the University at Buffalo.
2. Weekly meeting with project coordinator.
3. Training:
 - a. "Role of Obesity in Cancer Survival and Recurrence" in Washington, DC from October 31-November 1, 2011. This workshop was hosted by the National Cancer Policy Forum to examine issues related to diet, physical activity, obesity and cancer survival.
 - b. American Public Health Association's 139th Annual Meeting & Exposition in Washington, DC from November 1-2, 2011.

Johan Hernandez, MPH (Project Coordinator)

1. Weekly meeting with principal investigator and other staff project.
2. Training: Attendance to Annual Meetings
 - a. The American Public Health Association's 139th Annual Meeting & Exposition in Washington, DC from October 29-November 3, 2011. Hernández attended conferences and workshop on cancer epidemiology: Cancer Epidemiology, Cancer and Health Disparities and Breast Cancer Research and Poster presentations

**Breast Cancer Epidemiology in Puerto Rico
Annual Report (6)
July 2012 to June 2013**

Dr. Cruz M. Nazario

1. Weekly conference call with investigators from Puerto Rico and Dr. Jo Freudenheim from the University at Buffalo.
2. Weekly meeting with project coordinator.
3. Workshop and meeting
 - a. Attendance to the IV Conferencia Puertorriqueña de Salud Pública (Fourth Puerto Rican Public Health Conference) on San Juan Puerto Rico March 2013.

- i. Participate in panel and roundtable of discussions relating to public health issue such cancer, environmental pollution and other.

Dr. Michelle Schelske-Santos

1. Weekly conference call with investigators from Puerto Rico and Dr. Jo Freudenheim from the University at Buffalo.
2. Workshop and meeting
 - a. American Society for Nutrition at the Experimental Biology (EB) 2013 meeting in Boston, April 2013.
 - i. Presenter a poster with preliminary data of the Breast Cancer Epidemiology Study (ATABEY).

Dr. Imar Mansilla-Rivera

1. Weekly conference call with investigators from Puerto Rico and Dr. Jo Freudenheim from the University at Buffalo.
2. Workshop and meeting
 - a. IV Conferencia Puertorriqueña de Salud Pública (Fourth Puerto Rican Public Health Conference) on San Juan Puerto Rico March 2013.
 - i. Participate in roundtable of discussions relating to public health issue such cancer and environmental pollution.
 - ii. Co-Presenter a poster with preliminary data of the Breast Cancer Epidemiology Study (ATABEY).

Dr. Farah Ramirez

1. Weekly conference call with investigators from Puerto Rico and Dr. Jo Freudenheim from the University at Buffalo.
2. Workshop and meeting
 - a. American Society for Nutrition at the Experimental Biology (EB) 2013 meeting in Boston, April 2013.
 - i. Co- presenter a poster with preliminary data of the Breast Cancer Epidemiology Study (ATABEY).

Dr. Rosa Rosario

1. Weekly conference call with Dr. Jo Freudenheim (University at Buffalo) and Puerto Rico investigators team.
2. Workshop and meeting
 - a. 13thRCMI International Symposium on Health Disparities in San Juan, Puerto Rico from December 10-13, 2012.
 - b. IV Conferencia Puertorriqueña de Salud Pública (Fourth Puerto Rican Public Health Conference) on San Juan Puerto Rico March 2013.
 - i. Presenter a poster with preliminary data of the Breast Cancer Epidemiology Study (ATABEY).

Johan Hernandez, MPH

1. Weekly meeting with principal investigator and other staff project.
2. Workshop and meeting

- a. Attendance to the American Public Health Association's 140th Annual Meeting & Exposition in San Francisco from October 29-31, 2012.
 - i. Attended several conferences and workshop on cancer:
 - a. Cancer Epidemiology
 - b. Latino Cancer Research jointly (presented by the Cancer Forum and the Latino Caucus)
 - c. Impact of Social Determinants on Cancer Morbidity and Mortality
 - d. Cancer and Health Disparities and Breast Cancer Research.
 - e. Poster presentations
- b. Attendance to the IV Conferencia Puertorriqueña de Salud Pública (Fourth Puerto Rican Public Health Conference) on San Juan Puerto Rico March 2013.
 - i. Attended conferences and workshop on Public Health
 - ii. Presenter a poster with preliminary data of the Breast Cancer Epidemiology Study (ATABEY) Recruitment Process.

Appendix B
Courses of study investigators

**Breast Cancer Epidemiology in Puerto Rico
Annual Report (1)
June 2007 to June 2008**

Imar Mansilla Rivera

Registered in a course on “Environmental Epidemiology”, sponsored by the 2007 Summer Program in Applied Biostatistics & Epidemiological Methods, The Ohio State University, Columbus, Ohio. July 16-20, 2007.

Course description

Environmental Epidemiology

Harvey Checkoway, Ph.D., University of Washington

This course will provide a summary of the epidemiologic study designs and methods for investigating health hazards associated with environmental exposures. Related topics that will be covered include: case cluster investigation methods; approaches to characterizing environmental exposures; sources of and methods to minimize study bias; and applications of epidemiologic data, such as for environmental risk assessment. Methodological concepts will be illustrated with examples of research on environmental risk factors for cancer, neurological diseases, respiratory diseases, and adverse reproductive outcomes. Lectures will be supplemented by discussions of selected journal articles and by in-class exercises that emphasize the roles public health practitioners play in the conduct of environmental epidemiology.

Registered in a short course titled Logistic Regression Modeling, held in San Juan, Puerto Rico, May 12 – 14, 2008.

Registered in a short course titled “Effective Risk Communication: Theory, Tools for Practical Skills for Communicating about Risk”, sponsored by Harvard School of Public Health, Boston, Massachusetts, from May 19 – 21, 2008.

Registered in a Short course: “Logistic Regression Modeling in Epidemiologic Research” by Dr. Kleinbaum, May 12-14, 2008.

Michelle Schelske-Santos

- i. Courses Epidemiological Methodology at Graduate School of Public Health, University of Puerto Rico. The course presents epidemiological principles and methods as an approach to the study of the phenomena of health and disease. The scientific method, the epidemiological method, the concept of causality, descriptive epidemiology, and hypothesis formulation, case studies, cohort studies, intervention studies, screening, outbreaks, and research design are among the topics covered.
- ii. Summer course Nutritional epidemiology at Johns Hopkins summer institute, 2008. The course presents an introduction to the methodological issues involved in the design, conduct, analysis and interpretation of studies investigating the relationship between nutritional status, diet and disease.
- iii. Summer course Diabetes and Obesity Epidemiology at Johns Hopkins summer institute, 2008. This course describes the epidemiology and prevention of diabetes, obesity, and associated complications.

Breast Cancer Epidemiology in Puerto Rico**Annual Report (2)****June 2008 to June 2009****Imar Mansilla Rivera**

- i. Attended a short course on measurements of environmental exposures and their association with chronic diseases. (International Society for Environmental Epidemiology meeting in Pasadena, California October 12-16, 2008).

Breast Cancer Epidemiology in Puerto Rico**Annual Report (3)****June 2009 to June 2010****Imar Mansilla-Rivera**

- i. Attended a course on “Molecular Epidemiology of Cancer”, offered by the 44th Graduate Summer Session on Epidemiology, The University of Michigan, School of Public Health, Ann Arbor, Michigan. July 13-17, 2009. The course explored concepts and issues found at the interface of the basic sciences and cancer epidemiology, including discovery of new biomarkers, whole genome association studies, expression profiling and proteomics, and development of new technologies for cancer screening. Students were asked to apply the knowledge gained to a particular problem in cancer epidemiology.
- ii. Attended a Short course on “DAGviromental Health: Introduction to Causal Diagrams and their Application in Environmental Epidemiology Resear. International Society for Environmental Epidemiology (ISEE) 21st Annual Conference, Dublin, Ireland, August 2009

Rosa Rosario

- i. Attended a course on Social Epidemiology at Johns Hopkins Bloomberg School of Public Health, Baltimore, MD. June 29 to July 3, 2009. This course offered an overview of conceptual and methodological approaches relevant to the study of the impact of social factors on the population health.

Other course and educational activity

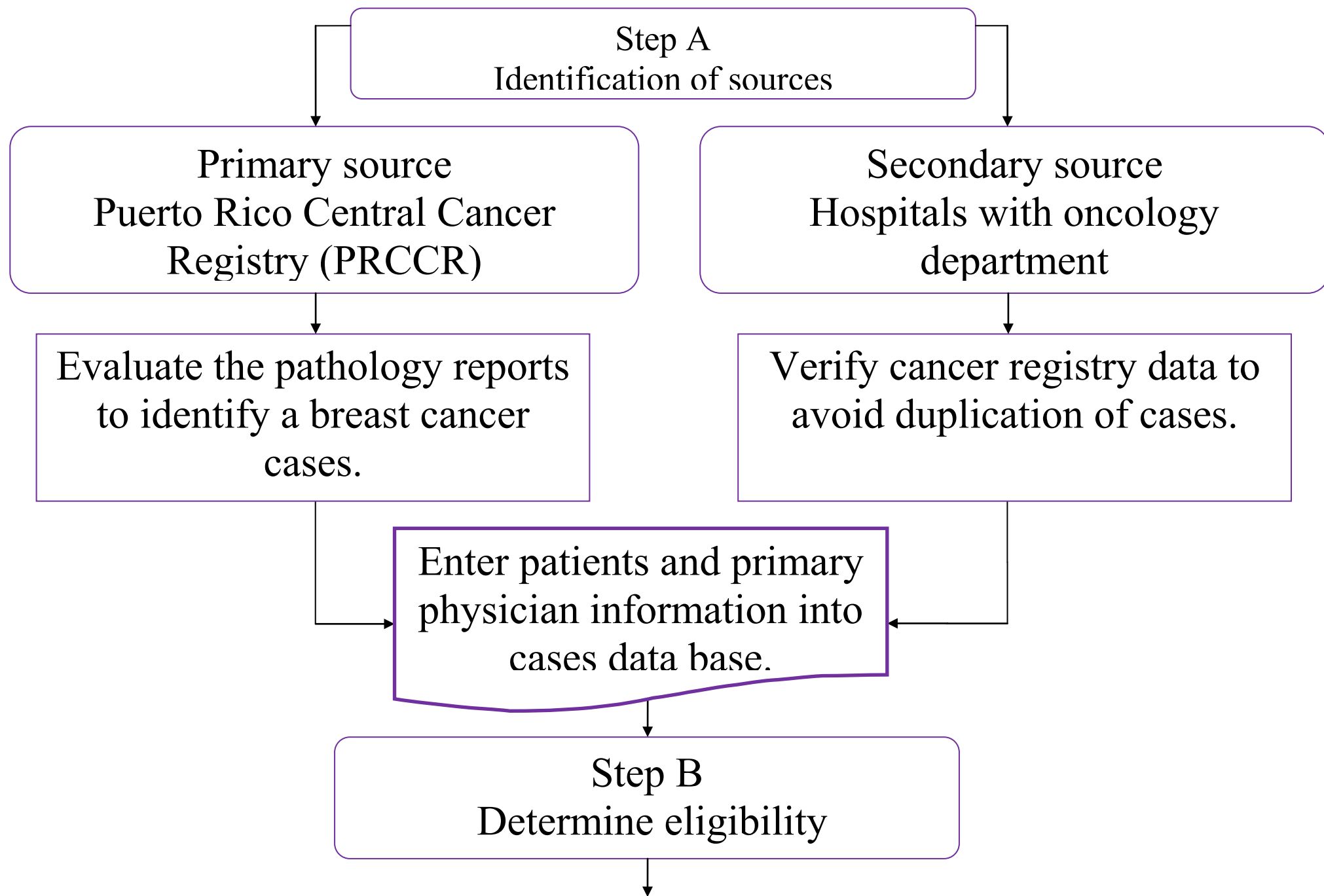
Imar Mansilla

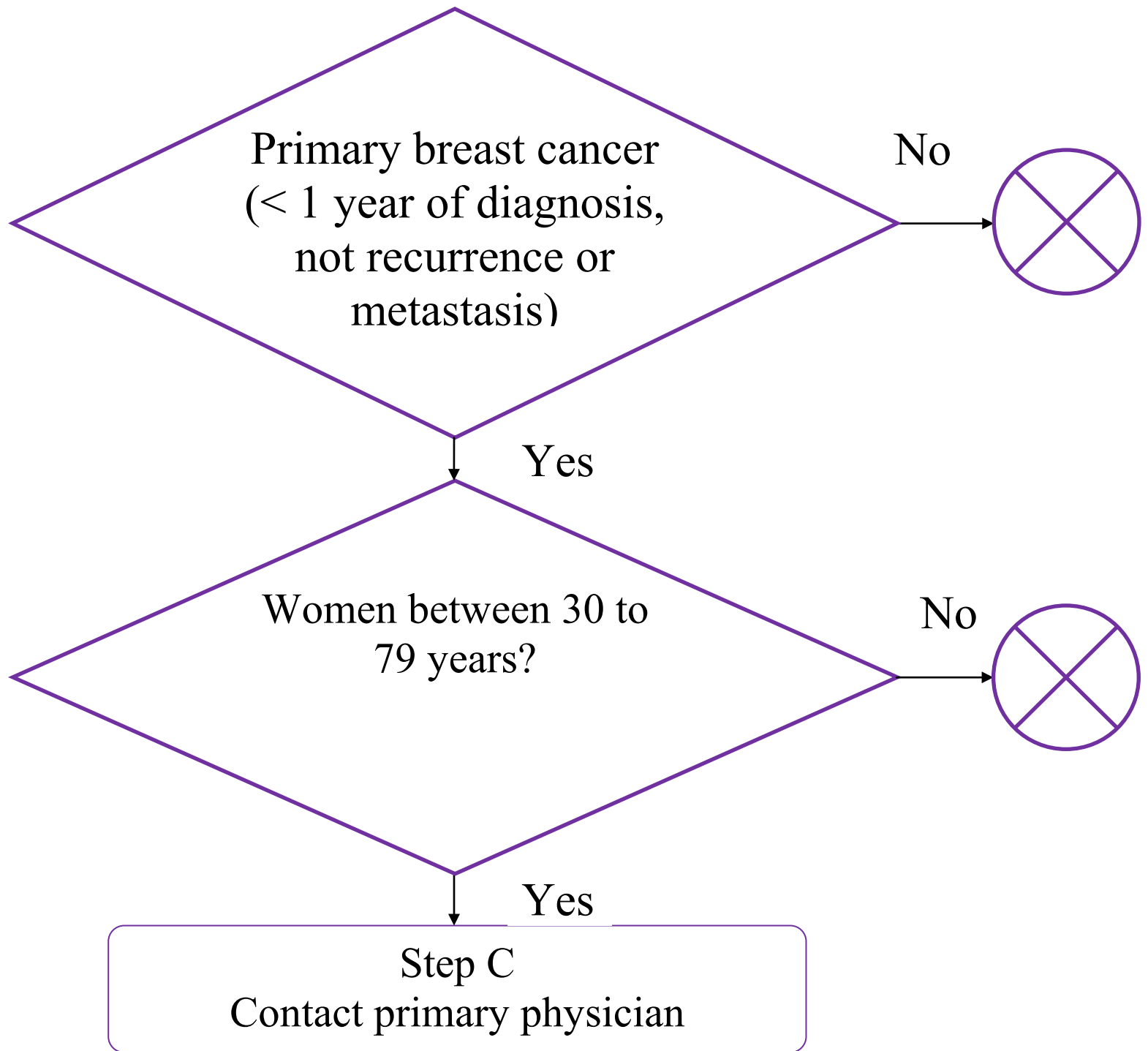
August 2012 24th Annual Conference International Society for Environmental Epidemiology (ISEE), Columbia, South Carolina. Short course on “Epigenetics-Memories of past exposures and predictors of diseases: Methodological considerations”

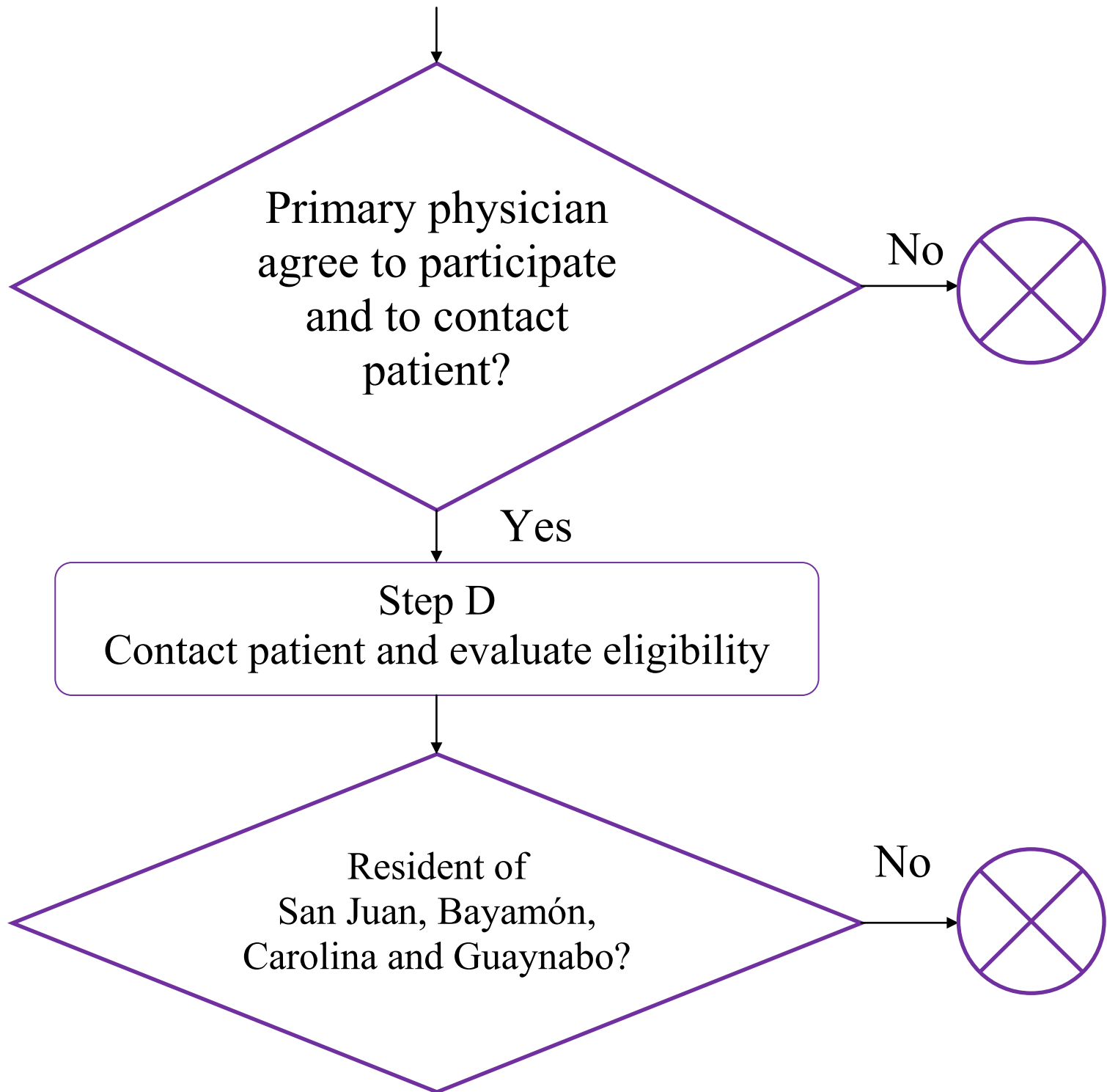
Michelle Schelske-Santos

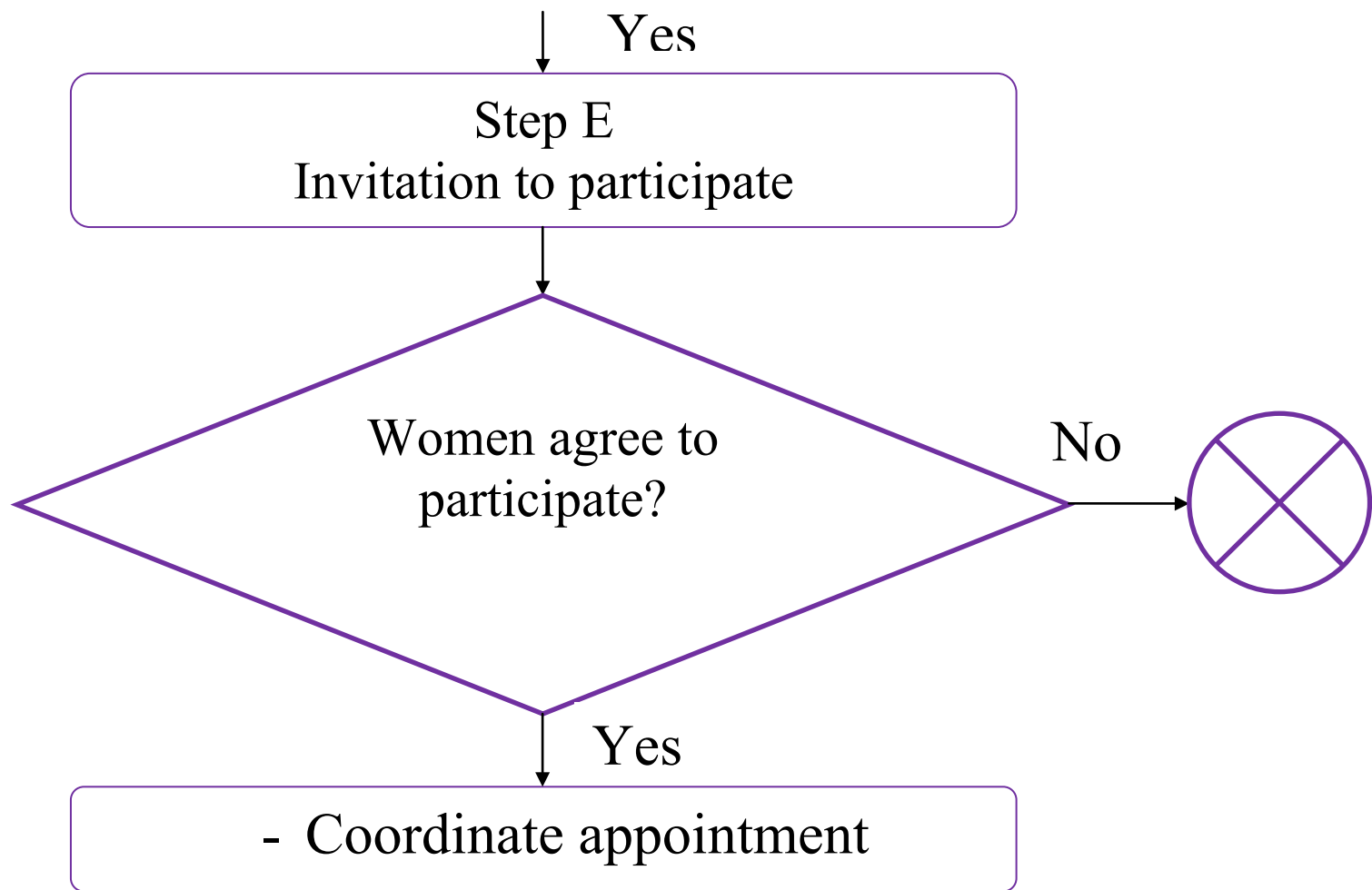
The participation in the American Association of Cancer Research Annual Conference contributed to the development of educational modules in Diet, Nutrition and Cancer for two courses: ECDO 5997, Special Topics in Foods and Nutrition, (August, 2010; 6 undergraduate students), and an online distance education course NUTR 5997, Contemporary Issues in Foods and Nutrition (August 2013, 6 undergraduate students). These elective courses will be offered periodically with the intent of increasing interest in diet, nutrition and cancer among undergraduate nutrition students to stimulate graduate studies and investigative projects in related areas.

Appendix C
Process for identifying cases

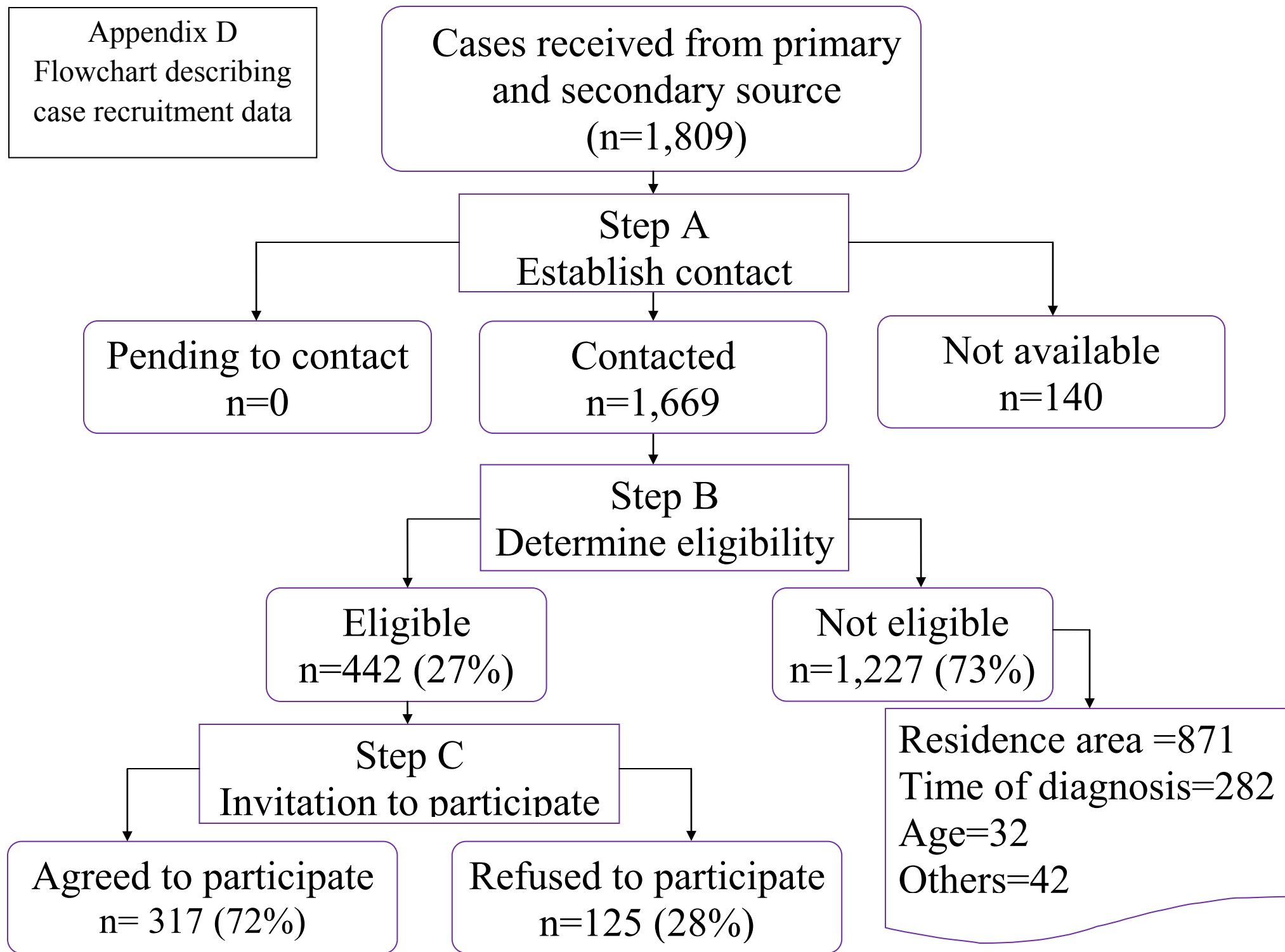






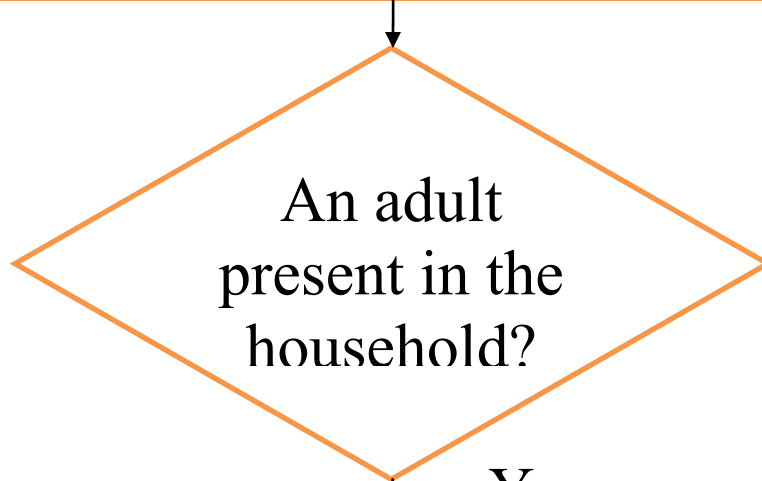


Appendix D
Flowchart describing
case recruitment data



Appendix E
Process for identifying control

Step A
Identify Household



No

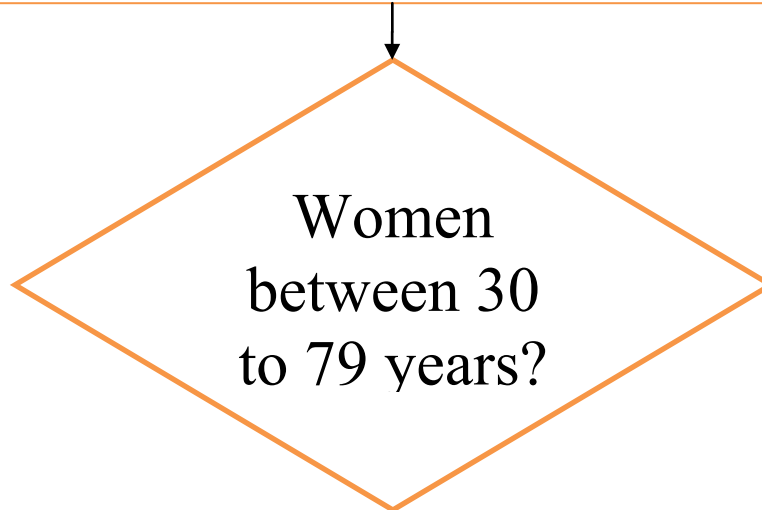
-Go to the next house to the left

Step A

Yes

Briefly explain Atabey study

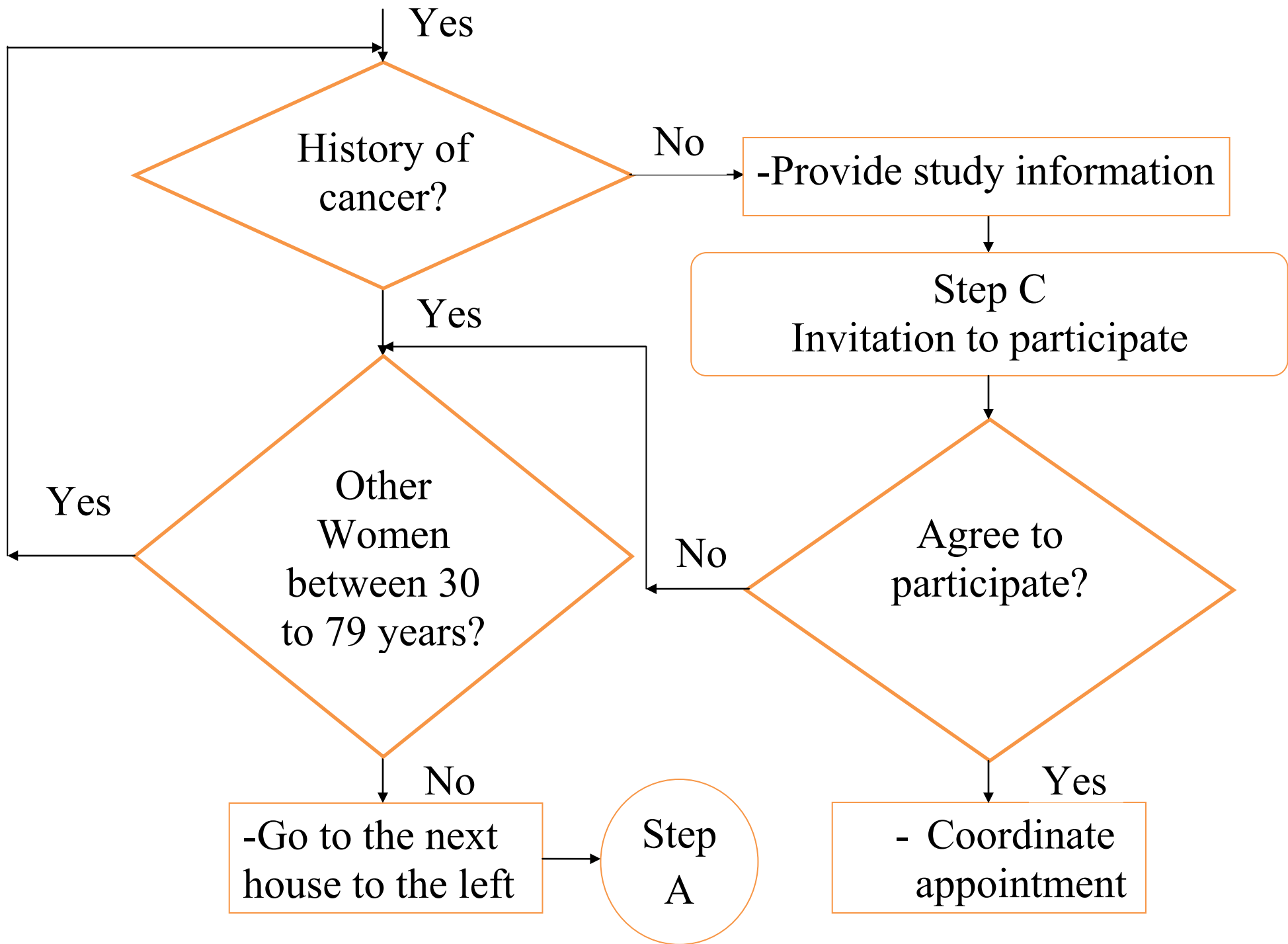
Step B
Identify potential Participant



No

-Go to the next house to the left

Step A



Appendix F
Flowchart describing
control recruitment
data

Potential controls identified
(n=720)

Determine eligibility

Women
aged 30-79
years?

n=570

Yes

No

n=150

Previous
history of
cancer?

n=538

No

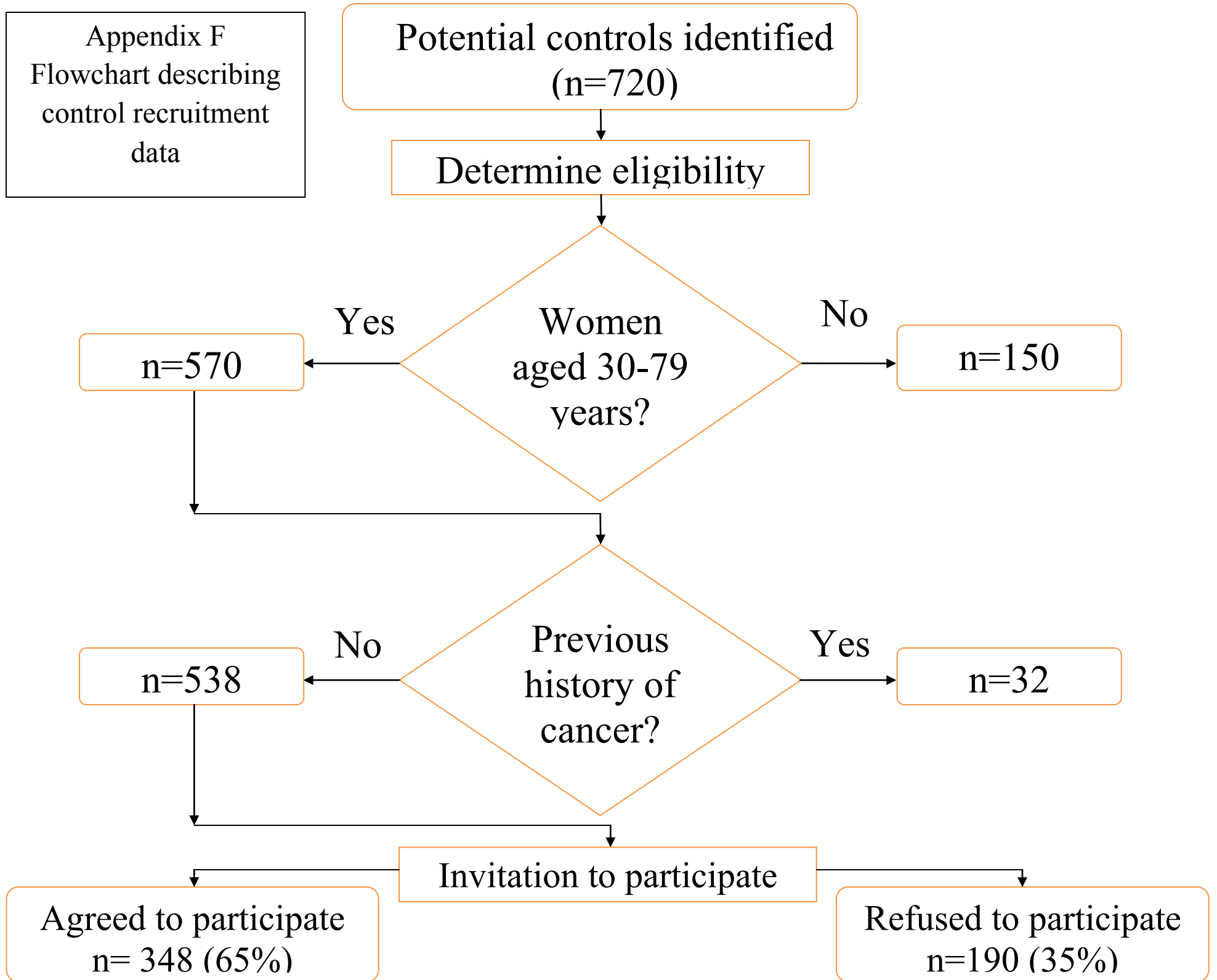
Yes

n=32

Invitation to participate

Agreed to participate
n= 348 (65%)

Refused to participate
n=190 (35%)



Appendix G

Table 1.

Demographic characteristics of study participants.	Number	% ($\bar{x} \pm SD$)
Breast cancer cases	292	47.3%
Population controls	325	52.7%
Age group (yrs.)		
30-39	73	11.8%
40-49	132	21.4%
50-59	143	23.2%
60-69	172	27.9%
70-79	97	15.7%
Age average (n=617)	617	56.02 \pm 12.6
Education		
High School or less	244	39.6%
Bachelor or technical program	308	49.9%
Graduate credits or degree	65	10.5%
Marital status		
Married or living with partner	309	50.5%
Single	86	14.0%
Divorce	140	22.9%
Widow	77	12.6%
Menopausal status		
Menopause	438	71.1%
Age at first pregnancy (n=542)		
<20 yrs.	141	26.0%
20-29 yrs.	336	61.9%
30-39 yrs.	62	1.4%
40-49 yrs.	3	0.6%
Number of pregnancies		
0	75	12.2%
1	66	10.7%
2	137	22.2%
≥ 3	339	54.9%
Use of HRT	474	77.5%
Family history of breast cancer	488	79.1%
BMI		
Under weight	10	1.7%
Normal	109	18.2%
Over weight	188	31.4%
Obese	292	48.8%