



**Carnegie Mellon**  
**Software Engineering Institute**

---

Pittsburgh, PA 15213-3890

# Thoughts on Applying CMMI in Small Settings

SuZ Garcia  
Software Engineering Institute

Sponsored by the U.S. Department of Defense  
© 2005 by Carnegie Mellon University

# Report Documentation Page

Form Approved  
OMB No. 0704-0188

Public reporting burden for the collection of information is estimated to average 1 hour per response, including the time for reviewing instructions, searching existing data sources, gathering and maintaining the data needed, and completing and reviewing the collection of information. Send comments regarding this burden estimate or any other aspect of this collection of information, including suggestions for reducing this burden, to Washington Headquarters Services, Directorate for Information Operations and Reports, 1215 Jefferson Davis Highway, Suite 1204, Arlington VA 22202-4302. Respondents should be aware that notwithstanding any other provision of law, no person shall be subject to a penalty for failing to comply with a collection of information if it does not display a currently valid OMB control number.

1. REPORT DATE <b>JAN 2005</b>		2. REPORT TYPE		3. DATES COVERED <b>00-00-2005 to 00-00-2005</b>	
4. TITLE AND SUBTITLE <b>Thoughts on Applying CMMI in Small Settings</b>				5a. CONTRACT NUMBER	
				5b. GRANT NUMBER	
				5c. PROGRAM ELEMENT NUMBER	
6. AUTHOR(S)				5d. PROJECT NUMBER	
				5e. TASK NUMBER	
				5f. WORK UNIT NUMBER	
7. PERFORMING ORGANIZATION NAME(S) AND ADDRESS(ES) <b>Carnegie Mellon University, Software Engineering Institute, Pittsburgh, PA, 15213</b>				8. PERFORMING ORGANIZATION REPORT NUMBER	
9. SPONSORING/MONITORING AGENCY NAME(S) AND ADDRESS(ES)				10. SPONSOR/MONITOR'S ACRONYM(S)	
				11. SPONSOR/MONITOR'S REPORT NUMBER(S)	
12. DISTRIBUTION/AVAILABILITY STATEMENT <b>Approved for public release; distribution unlimited</b>					
13. SUPPLEMENTARY NOTES					
14. ABSTRACT					
15. SUBJECT TERMS					
16. SECURITY CLASSIFICATION OF:			17. LIMITATION OF ABSTRACT	18. NUMBER OF PAGES	19a. NAME OF RESPONSIBLE PERSON
a. REPORT <b>unclassified</b>	b. ABSTRACT <b>unclassified</b>	c. THIS PAGE <b>unclassified</b>			

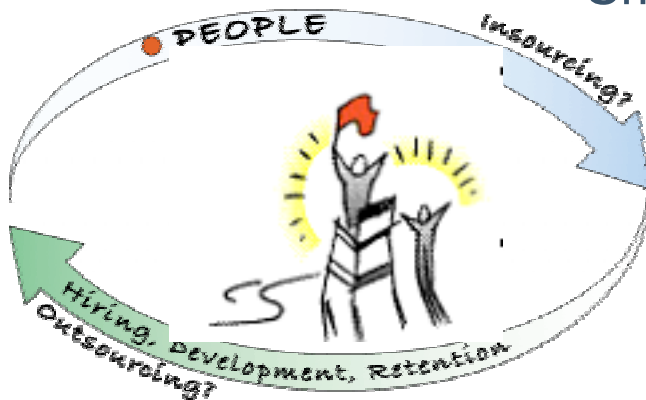


# Scope of CMMI in Small Settings Project

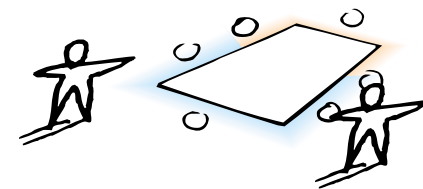


Small Companies

Small Organizations



Small Projects



*Some issues are similar across all 3 settings; some are unique to a particular setting*



# What is CMMI?

“The Purpose of CMM Integration is to provide guidance for improving your organization’s processes and your ability to manage the *development, acquisition and maintenance of products and services.*”

CMMI Version 1.1

- *Small projects, organizations, companies are very active in this arena!*



## **Why Do Small *Companies* Care About CMMI?**

The need for operational effectiveness/efficiency increases as the size of the company grows

When partnering/subcontracting with larger companies, the expectation for CMMI-adherent practices is increasing

When independently bidding on some government business, CMMI-based appraisals/improvement are required



## **Why do Small *Organizations* Care About CMMI?**

Many small organizations live within a larger organization that is actively using CMMI to support their business goals

- At some point, the small organization may not have a choice about adoption
- In some cases, CMMI can be a way for the small organization to gain better projects/customers, by demonstrating their competency in process management while preserving their agility and flexibility



## **Why Do Small *Projects* Care About CMMI?**

Many small projects live within organizations adopting CMMI

- CMMI can provide a competitive differentiator if a small project has better processes and more agility than larger projects it's competing with
- CMMI can levy a tremendous overhead burden on small projects if it's implemented poorly for their context

Many small projects are suppliers of niche products/services to larger organizations/companies:

- The customer may require evidence of CMMI conformance
- The project may want to use CMMI to improve confidence of customers that it's "safe" to let the small project use their own processes instead of adopting the customer process



## **Challenge Areas for Small Settings Adopting CMMI**

The Three Major Investment Elements Involved in CMMI-based Improvement:

- Appraisal
- Definition/Infrastructure Support
- Deployment

Larger companies typically have a resource (though not necessarily skill(!)) advantage with Appraisal and Definition, but have a distinct *disadvantage* in deployment

Appraisal and Infrastructure development are the two most visible cost areas for CMMI adoption





# The Appraisal Challenge

“Official” CMMI appraisals (called SCAMPI A Appraisals) consume a larger percent of the budget for a small company than a large one

- \$ to hire lead appraisers
- Time away from work for staff to be interviewed
- Time away from work for internal appraisal team

Mitigation suggestions for small settings:

- Use less expensive methods (lots of consultants have them) to do a “pre-appraisal” to be sure that your money for a SCAMPI A will be worth your while
- See if you can get a lead appraiser to use “free” appraisal team resources, ie lead appraiser candidates that will volunteer to do an appraisal to help them move forward on their path toward authorization
- If your staff is not already familiar with CMMI, I strongly advise *against* just doing a self assessment



## The Definition/Infrastructure Challenge

Defining/redefining processes to adhere to CMMI goals requires

- Model knowledge
- Process definition knowledge/skills
- Knowledge of the organization/company

Many large organizations have all 3; most small settings are missing the model knowledge at least, and often the process definition knowledge and skills are not emphasized

Mitigation suggestions:

- Watch for SEI and other industry publications on implementing CMMI for Small Businesses –several should come out over the next couple years
- If not pressured to implement CMMI fast, take it slow
  - One or two Process Areas per month and read them, connect them to your business issues, and see if you can find simple changes to your existing practices that would adhere to the model and give you more benefit than your current practice (note: there are more books coming out for CMMI “beginners”, eg *CMMI Distilled* by Ahern et al)



# The Deployment Challenge

The Challenge for Large Organizations/Companies:

- The larger the organization and the greater the variety of business contexts, the more difficult it is to find the “right” level of standard processes/tailoring guidelines
- Often deployment is not only multi-project, but multi-site and multi-customer type

The Challenge for Small Organizations/Companies/Projects:

- “The customer rules” – Many small organizations adopt/adapt their business practices directly from their customers or primes
- Some people self-select into small businesses because they want to “do their own thing” rather than follow corporate norms

Mitigation suggestions:

- Just like with large organizations, *demonstrating your ability to deliver what the customer wants* using your local business practices usually keeps them from forcing their practices on you
- Depending on the number of customer contexts, may want to create a standard process for each customer type as your starting point



## **The Deployment *Advantage* of Small Settings**

The complexity and cost of training employees, creating/using metrics, deploying new templates and job aids is usually much smaller for small companies than large

- Even approaches like “one on one” sessions incorporated into other meeting contexts are feasible in small settings
- People who work in small settings are often, by definition, more flexible than those who have worked a long time in large settings
  - Adopting new practices isn't as much of a challenge for them



**Carnegie Mellon**  
**Software Engineering Institute**

# Implementing CMMI in Small Settings Project

SEI is responding to the community's call for guidance on implementing CMMI in small businesses, organizations, and projects.

We are

- piloting initial ideas
- gathering input from users and transition partners
- connecting with the international research community working in this area

Our goal is

Connect people in small settings and SEI partners working in them with useful assets that reflect the community's and the SEI's experiences

If you are implementing CMMI in small settings, we want to hear from you:

<http://seir.sei.cmu.edu/feedback/smallCMMI.asp>



# **Huntsville Pilot Project Overview**

## **(2003/2004)**

A joint project performed by the partnership between the Software Engineering Institute (SEI) and AMRDEC SED to establish the **technical feasibility** of developing guidance and other special-purpose transition mechanisms to support adoption of CMMI by **small and medium enterprises** (25 to 250 employees in Huntsville)

Selected 2 Pilot companies: Analytical Services, Inc. (ASI) and Cirrus Technology, Inc. (CTI)

Pilot artifacts available at the SEI website:

- Toolkit ([www.sei.cmu.edu/ttp/publications/toolkit](http://www.sei.cmu.edu/ttp/publications/toolkit))
- Presentations on the Pilot

Other reports planned:

- Experience reports



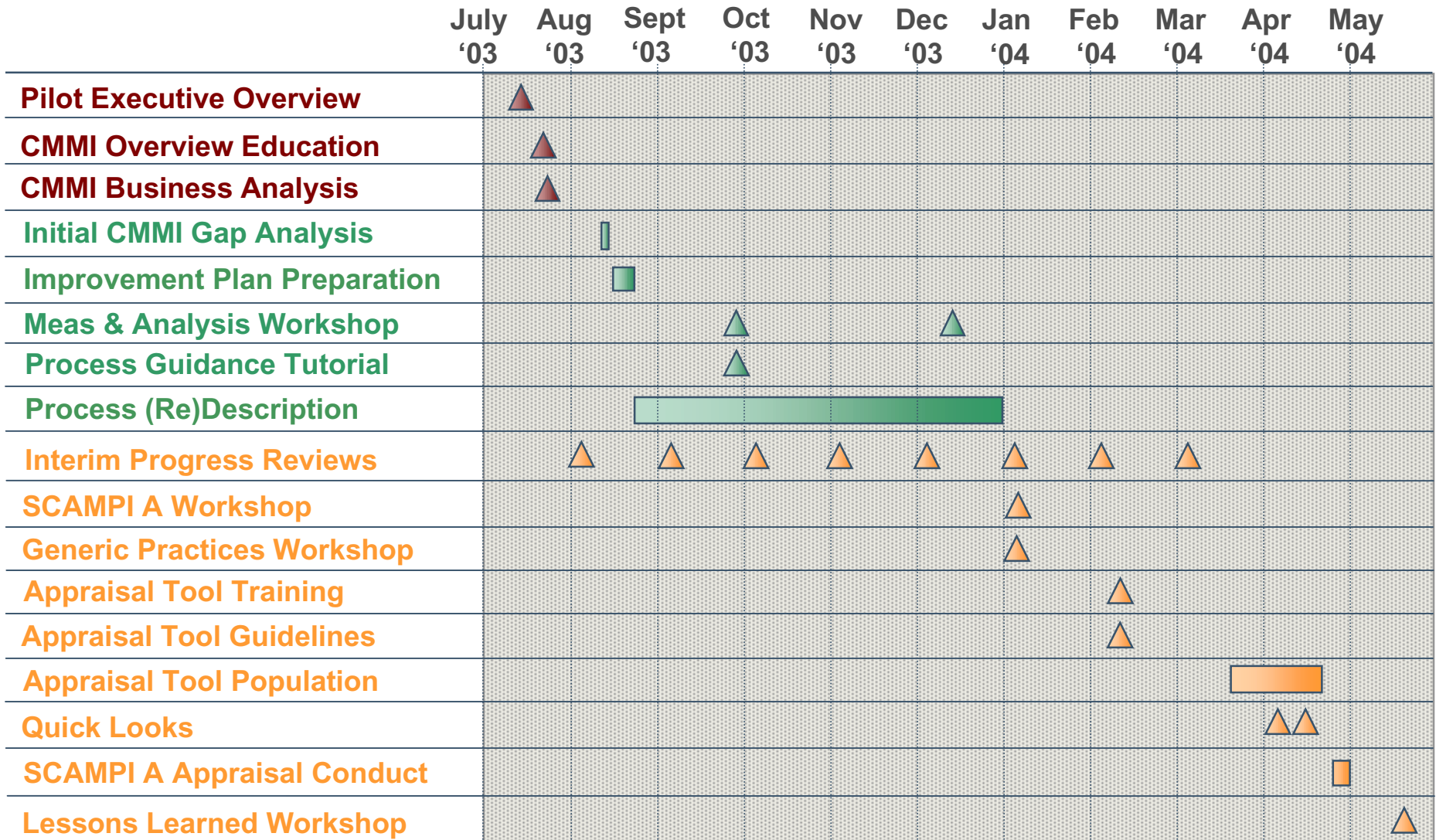
# HSV CMMI-SME Pilots:

## Selected Pilot Companies' Characteristics

- Both pilots are involved in **product development** for Government or **engineering services** to support product development
- One pilot company has a manufacturing element
- Both had recent experience with ISO 9000, but in different ways

*Companies selected via formal process administrated by HSV Chamber of Commerce, SEI, and AMRDEC SED*









# ASI's Experience of Benefits



The slide features a red banner at the top with the title "Benefits from CMMI Adoption" in white. To the left of the banner is a photograph of two people, a woman and a man, looking at a computer screen. Below the banner is a list of bullet points. The ASI logo is in the bottom right corner, and the number 17 is in the bottom left corner.

## Benefits from CMMI Adoption

- Participation in Pilot extremely beneficial for ASI
- CMMI Adoption has been worth investment
  - CMMI adoption enhanced and improved our QMS
  - Natural follow-on to ISO and provides continuous improvement
  - *Improved ability to organize and communicate status of projects to customers and other stakeholders*
  - *Addresses customer projects with process requirements*
  - *Reduced training time for new employee*
  - *Prevented requirements creep and ensured on-time and below budget project completion*
  - Supports company objectives
  - Provides path for taking the company to the next level

17





# ASI CMMI Pilot Summary

Initiated CMMI Pilot Project – Aug '03

- Project Planning (PP)
- Requirements Management (REQM)
- Measurement and Analysis (M&A)

Completed Pilot in May '04 – Culminated with SCAMPI A Appraisal

Appraisal of **3** process areas above with addition of:

- Organizational Training (OT)
- Organizational Process Focus (OPF)

Achieved Target Capability Level Profile

- 2 projects across Engineering Services Business Unit
  - Database Upgrade—4 people
  - Logistics Deployment – 1 person managing external team





# CTI CMMI Pilot Summary

Initiated CMMI Pilot Project – Aug '03

- Project Planning (PP)
- Requirements Management (REQM)
- Project Monitoring & Control

2 projects:

- Research & Development – 2 people
- Manufacturing – 11 people

Put pilot on hold for six weeks to deal with some business restructuring needed due to recent acquisitions

Completed Pilot in Apr '04 – Culminated with SCAMPI A Appraisal

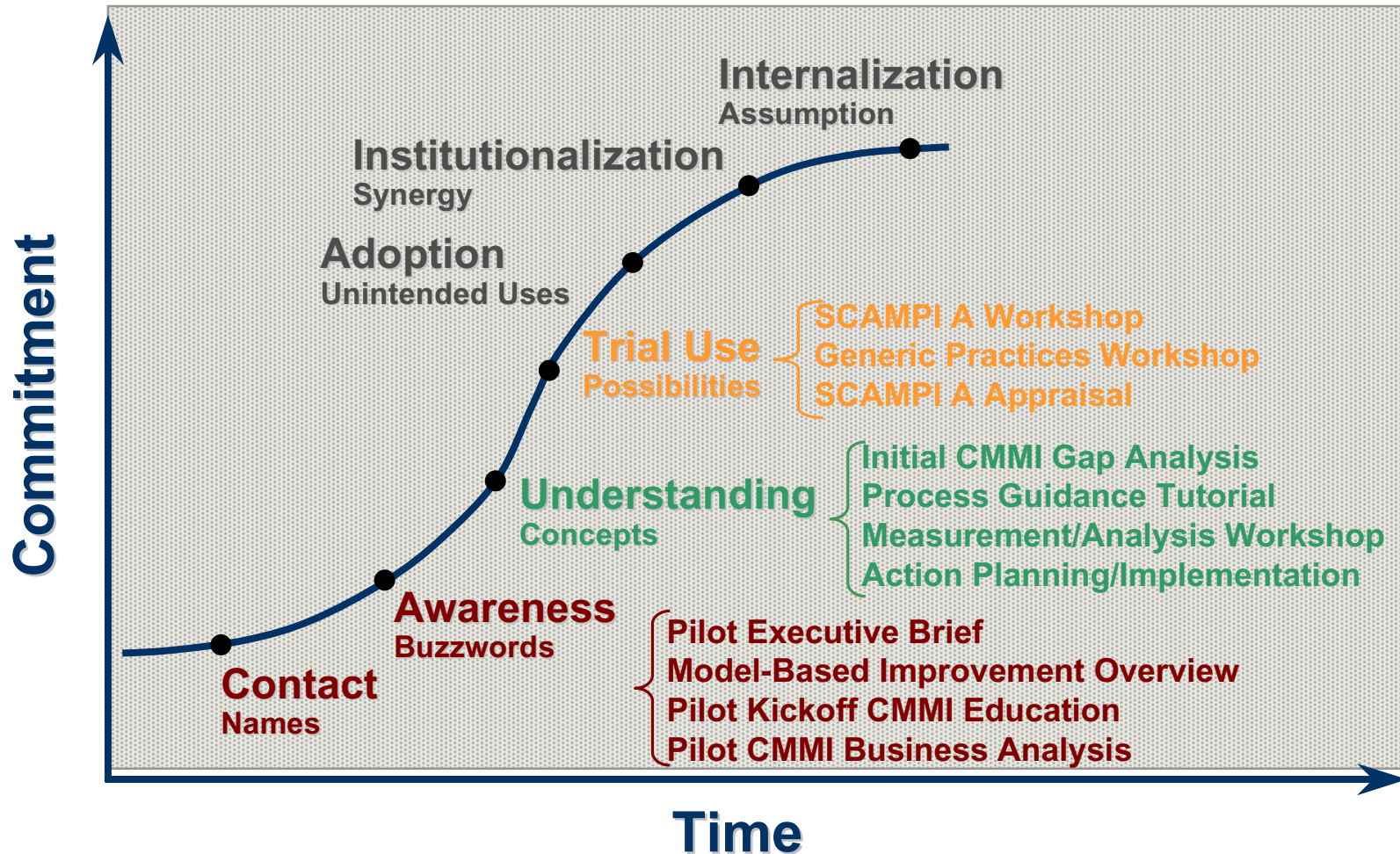
Appraisal of 3 process areas above

Achieved Target Capability Level Profile

- CL1 for all 3 Process Areas



# Summary of Materials Provided by Pilot



Adapted from Patterson & Conner, "Building Commitment to Organizational Change", 1982.



# **CMMI in Small Settings HSV Pilot Toolkit**

The set of assets used in working with the two HSV pilots:

- Process descriptions of activities used with the pilots
- Presentations/tutorials
- Appraisal (SCAMPI B and A) support tools
- Templates

Assets organized around Adoption Commitment Curve to make it easy to see the assets available to support different adoption activities

[Link to Toolkit](#)



## **Initial Conclusions on Technical Feasibility of Using CMMI in Small Businesses**

- CMMI provides a set of best practices from which small businesses can benefit
- The continuous representation of CMMI allows small companies to focus on improvements that have the highest payoff for the company while learning about benefits of other elements of the model
- Aligning improvement with business goals is particularly important for small businesses, and in this case was easily achieved
- Simple CMMI-based improvements can have a significant impact in small organizations
- “Changing” the practices within the model isn’t necessary in most cases; finding alternative practices and being creative in work products is often more relevant
- Both CMMI and SCAMPI A (the CMMI appraisal method) scale down to fit small settings

*The greatest challenge for small businesses is the affordability of Subject Matter Experts, and the infrastructure and appraisal costs*





## A few relevant resources...

<http://www.sei.cmu.edu/ttp/presentations>

- For SuZ Garcia presentations, including all those she has written related to the Huntsville pilots

[http://register.ndia.org/interview/register.ndia?PID=Brochure&SID=\\_1D00VQR4N&MID=5110](http://register.ndia.org/interview/register.ndia?PID=Brochure&SID=_1D00VQR4N&MID=5110)

- For proceedings of NDIA conferences, including the CMMI User's Conference for 2004, containing an entire track of presentations on using CMMI in small settings, some of which are from the HSV pilots (2004 CMMI User's Conference proceedings probably not available until Dec 2004, since conference is being held this week!)

<http://www.sei.cmu.edu/ttp/publications/toolkit>

- For the CMMI Huntsville Pilot Toolkit and Experience Reports, as they become available