

High Resolution Bathymetry and Backscatter of a High-Frequency Test Area

Roger D. Flood
Marine Sciences Research Center
State University of New York
Stony Brook, NY 11794-5000
phone: (631) 632-6971 fax: (631) 632-8820 email: roger.flood@sunysb.edu
Award Number: N000149810867

Larry Mayer
Center for Coastal and Ocean Mapping
University of New Hampshire
Durham, N.H. 03824
phone: (603) 862-2615 fax: (603) 862-0839 email: lmayer@cisunix.unh.edu

Award Numbers: N00014950064 and N000149910866
<http://www.ccom-jhc.unh.edu/>

LONG-TERM GOALS

Our long-term goal is to understand the processes which create and modify the sea bed and the acoustic properties of the bed in the coastal zone and to understand how seabed morphology and acoustical properties can be studied using high-resolution swath mapping techniques (bathymetry and backscatter).

SCIENTIFIC OBJECTIVES

We used SUNY Stony Brook's EM 3000 multibeam echosounder, a research-grade shallow-water multibeam echosounder operating at 300 kHz, to produce a high-resolution map of the sea bed bathymetry and backscatter in the High Frequency Sound Interaction in Ocean Sediments DRI (SAX99) study area. The prime study area is about 600 m by 600 m at a water depth of 18 m. We collected highly overlapping data to characterize bottom topography, bottom roughness and backscatter patterns immediately prior to the emplacement of bottom equipment and provided information crucial to the deployment of instruments during the experiment. Subsequent analysis has concentrated on better quantifying local variations in backscatter and topography. We now seek to use this unique high-density data set to: 1- characterize lateral variability in the DRI study area; 2- develop new approaches to rapidly processing multibeam sonar data; and 3- produce statistically robust representations of seafloor topography and backscatter in order to develop approaches for the remote characterization of seafloor properties and to understand the factors causing the observed backscatter patterns.

APPROACH

For this project, the MSRC/SUNY EM 3000 system was installed on the Research Vessel R/V Tommy Munro (University of Southern Mississippi) with the transducer mounted on a pole attached to the side of the vessel. The EM 3000 system includes the Simrad EM 3000 (echo sounder transducer, surface electronics, logging computer), a TSS POS/MV (ship attitude and DGPS navigation), and a CTD (for determining the sound velocity profile during the survey). Additional components include backup

Report Documentation Page				Form Approved OMB No. 0704-0188	
Public reporting burden for the collection of information is estimated to average 1 hour per response, including the time for reviewing instructions, searching existing data sources, gathering and maintaining the data needed, and completing and reviewing the collection of information. Send comments regarding this burden estimate or any other aspect of this collection of information, including suggestions for reducing this burden, to Washington Headquarters Services, Directorate for Information Operations and Reports, 1215 Jefferson Davis Highway, Suite 1204, Arlington VA 22202-4302. Respondents should be aware that notwithstanding any other provision of law, no person shall be subject to a penalty for failing to comply with a collection of information if it does not display a currently valid OMB control number.					
1. REPORT DATE SEP 2000		2. REPORT TYPE		3. DATES COVERED 00-00-2000 to 00-00-2000	
4. TITLE AND SUBTITLE High Resolution Bathymetry and Backscatter of a High-Frequency Test Area				5a. CONTRACT NUMBER	
				5b. GRANT NUMBER	
				5c. PROGRAM ELEMENT NUMBER	
6. AUTHOR(S)				5d. PROJECT NUMBER	
				5e. TASK NUMBER	
				5f. WORK UNIT NUMBER	
7. PERFORMING ORGANIZATION NAME(S) AND ADDRESS(ES) Marine Sciences Research Center,,State University of New York,,Stony Brook,,NY,11794				8. PERFORMING ORGANIZATION REPORT NUMBER	
9. SPONSORING/MONITORING AGENCY NAME(S) AND ADDRESS(ES)				10. SPONSOR/MONITOR'S ACRONYM(S)	
				11. SPONSOR/MONITOR'S REPORT NUMBER(S)	
12. DISTRIBUTION/AVAILABILITY STATEMENT Approved for public release; distribution unlimited					
13. SUPPLEMENTARY NOTES					
14. ABSTRACT					
15. SUBJECT TERMS					
16. SECURITY CLASSIFICATION OF:			17. LIMITATION OF ABSTRACT Same as Report (SAR)	18. NUMBER OF PAGES 7	19a. NAME OF RESPONSIBLE PERSON
a. REPORT unclassified	b. ABSTRACT unclassified	c. THIS PAGE unclassified			

computers for near real-time data reduction, a printer for data display, and a CD-ROM writer for data distribution. We also deployed a bottom-mounted pressure gauge for measuring water surface elevation (tide) changes during the survey. Preliminary data products were provided to other investigators on CD-ROM by the end of the cruise.

The EM 3000 collects bathymetric and backscatter data across a swath that is about four times the water depth. We had a minimum track spacing of 9 to 18 m (0.5 to 1 times water depth) at several different orientations, and our navigational accuracy was about 1 m. This track spacing will allow a final gridding interval of about 1 m for backscatter and bathymetry and for backscatter to be measured at several different incident angles. While navigational accuracy limits gridding to about 1 m, the image data (the higher-resolution backscatter time series) can detect individual oscillation ripples when the ripples are parallel to the ship track. Thus the resolution of the backscatter data is higher than the 1 m gridding interval.

WORK COMPLETED

Our EM 3000 survey, conducted between September 27 and 30, 1999, covered an area of about 2.5 square km centered around the SAX99 site. We ran survey lines in north-south, east-west, northeast-southwest, and southeast-northwest directions to understand how backscatter changes with orientation. Additional data was collected at other orientations. A pressure gauge provided surface elevation data at the study site. Dr. Robert Stoll (LDEO) joined us for about 1 day and we deployed his bottom sled and free-fall penetrometer within the SAX99 area. We also collected three sediment samples to help understand what the backscatter patterns observed. Survey data from the initial north-south and east-west surveys was reduced on board to produce maps of bathymetry, sun-illuminated bathymetry, and backscatter. These maps were given to Dr. Eric Thorsos and others planning SAX99 immediately at the end of the survey in order to assist in determining the mooring locations.

Since collection of the data we have developed a suite of analytical approaches to take advantage of the phenomenal density of data and to explore approaches to the statistical characterization of the seafloor in terms of both bathymetry and backscatter.

RESULTS

Our results show that the sea bed here is made up of a number of shallower regions (with water depth about 18.5 m) separated by 1 to 2 m deep troughs, spaced about 1 km apart, trending generally downslope (Figure 1). The shallower regions generally dip slightly towards the southeast, and the eastern sides of the troughs are generally slightly steeper than their western sides. Some troughs do not go very far in the onshore-offshore direction, while others cross the survey area. The troughs that have limited onshore-offshore extent form closed topographic depressions. The floors of the troughs tend to be flat and between 50 and 100 m wide. In almost all cases, the trough floors have lower backscatter than do the ridges. The walls of the troughs also tend to have slightly lower backscatter values. We collected grab samples from the high-backscatter ridge (medium sand), from the low backscatter trough (sandy silty mud), and from a closed depression at the eastern edge of our study area where the backscatter was very low (mud). Thus in this area lower backscatter appears to correlate with increased mud content. When viewed at full resolution our data do image the wave oscillation ripples reported by others from the SAX99 study area. The proposed position for one of the acoustic tower moorings was on the eastern flank of the channel. Based on our survey data, the mooring site was moved into the more uniform region between the 18 and 18.5 m contours.

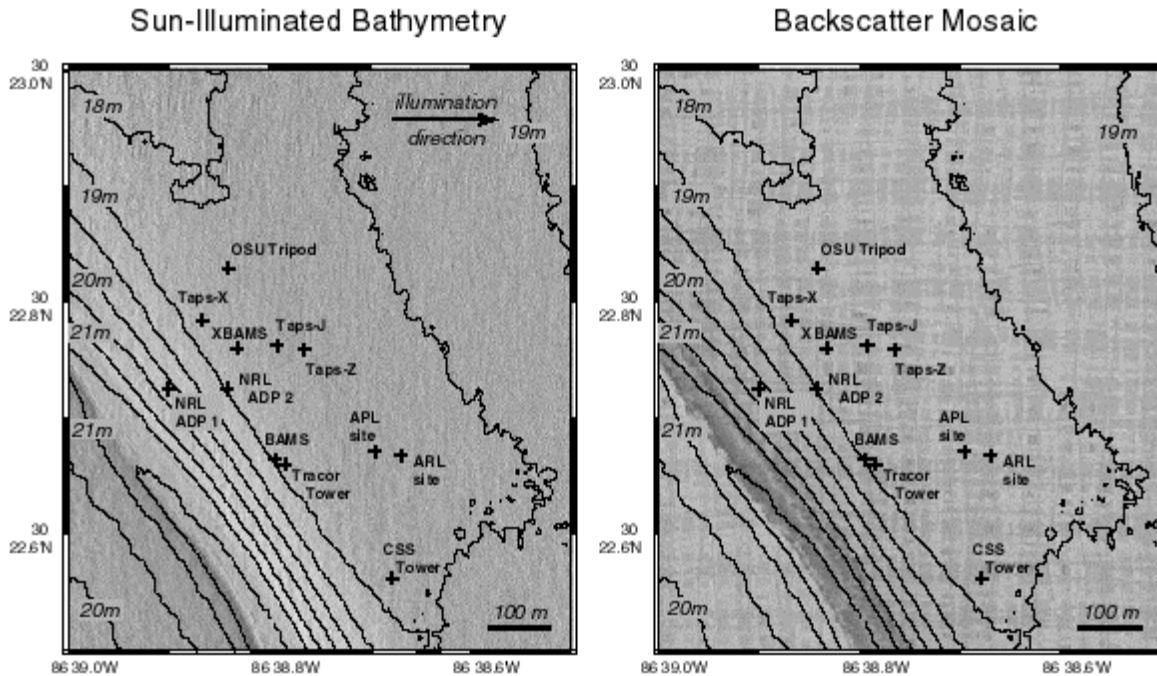


Figure 1: Bathymetry of the SAX99 study region (0.5 m contours) showing the positions of bottom moorings. The primary instrumented moorings are on the broad high where water depth is between 18 and 18.5 m. Left: sun-illuminated bathymetry. Right: backscatter (higher backscatter is lighter gray shade).

Results of a preliminary analysis of multibeam backscatter vs. angle, Figure 2, show that there are distinct regional variations in backscatter patterns. The maximum multibeam backscatter angle for a single-head EM 3000 system is about 65 degrees, corresponding to a minimum incidence angle of about 25 degrees. While this is larger than the sub-critical incidence angles which are the focus of the SAX99 experiment, the angular backscatter data does provide important information about the variability of sediment acoustic properties within the study area, including at the sites of detailed bottom studies. For example, the upper row of Figure 2, collected near the BAMS tower, shows that the character of the backscatter vs. angle plot is different at angles of ± 30 degrees if the sound is travelling perpendicular to the ripples or parallel to the ripples. The stronger backscatter perpendicular to the ripples is most likely due to the topography of the ripples. At larger angles the backscatter plots are more similar suggesting that topography is playing less of a role in this region. A distinctly different backscatter pattern is seen in the fine-grained channel (Figure 2, lower left), with lower backscatter at nearly all grazing angles. The lower right plot shows how backscatter varies along a track that extends from the region of the towers towards the channel. A number of different backscatter patterns are evident that are intermediate between the other three patterns shown. We will continue our study to characterize backscatter response at the different experiment sites and within the study area as a whole, and we will work with other investigators to understand the causes of the observed backscatter patterns.

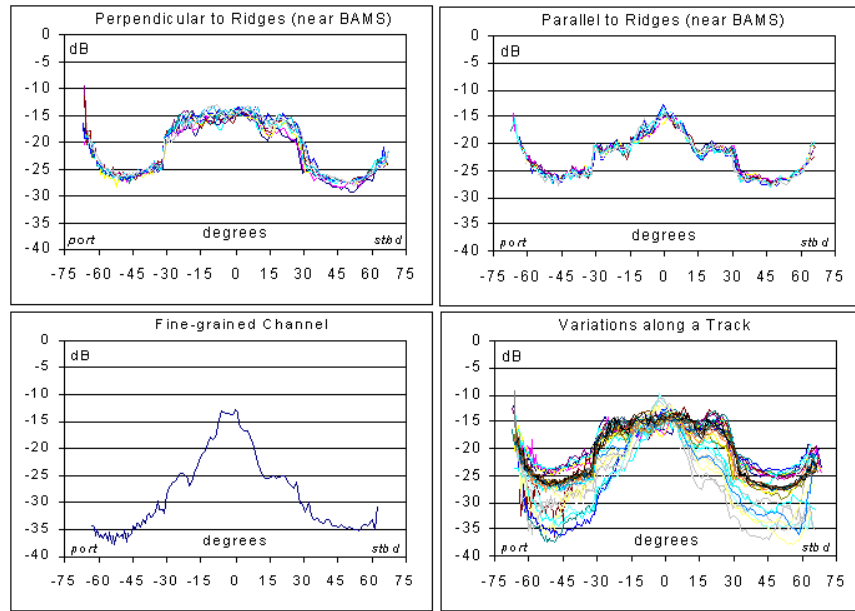


Figure 2: Plots of backscatter vs. beam angle in the vicinity of the BAMS mooring (upper), in the fine-grained channel (lower left), and along a ship track that passes from near the BAMS site into the channel (lower right).

We have also taken advantage of the remarkable data density in the area (Fig 3a) to develop automated tools for data cleaning and to begin to understand the statistical constraints on automated cleaning tools. A total of 307 lines were gathered in several directions with an average line offset of 10m in a central area of 600x600m, resulting in an average density of 125 soundings/m². The massive redundancy provides for robust analysis of the data and allows for error analysis, extraction of a statistically realistic representation of the bathymetry, and thus true radiometric correction of backscattered values (Fig 3b). This geometry also allows us to evaluate mean backscatter as a function of grazing angle for any given piece of seafloor, thus obviating the need to assume a homogeneous seafloor across the swath. These preliminary analyses allow us to approach the problem of remote seafloor segmentation and characterization using the dependence of backscatter on grazing angle with more confidence (Calder et al., 2000). We have also taken the statistical characterization of the processed backscatter values and applied a segmentation algorithm to it. The resulting mapping clearly identifies areas of differing seafloor type (Fig. 4). Ground truth samples have been collected from these regions and will be analyzed.

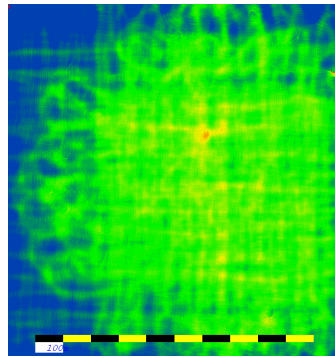


Fig 3a.



Fig. 3b.

Figure 3: a) Multibeam data density per 2 m pixel in SAX99 test area. Red = 700-1000 soundings, yellow = 500 – 700, green = 300 – 500, blue = 0 – 300. b) Cleaned median binned bathymetric surface produced with no manual editing of data in 5 minutes of processing time.

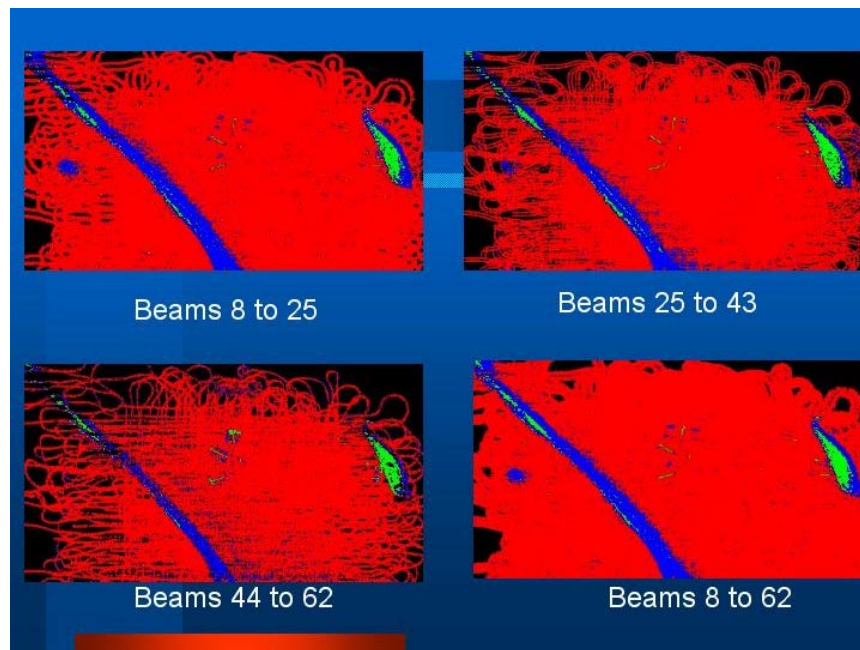


Fig. 4. Color-coded representation of segmentation of backscatter amplitude statistics data for both subsets of beams and nearly all beams. Segmentation consistently defines three sedimentary regimes.

IMPACT/APPLICATIONS

The ability to rapidly and statistically robustly clean multibeam data will have important ramifications on all aspects of seafloor surveying. It is also the starting point of efforts to remotely characterization of the seafloor, a long-sought goal of many communities.

TRANSITIONS

None yet though both NOAA and NAVO are interested in processing approaches.

RELATED PROJECTS

This is a cooperative effort between MSRC/SUNY (Flood) and the Center for Coastal and Ocean Mapping (Mayer). MSRC (with assistance from Dale Chayes at LDEO) built the transducer mounting and installed the equipment on the vessel, and MSRC operated the system during the survey. The SUNY EM 3000 is being used in other programs to characterize shallow-water processes, including the west-coast STRATAFORM area, and insights gained from this study will be applied in these other studies.

REFERENCES

Calder, B.R., Rzhhanov, Y., Fonseca, L., Mayer, L.A. and Flood, R., 2000 Statistical Processing of Multibeam Sonar Data from SAX-99, EOS, in press.

PUBLICATIONS

Dijkstra, S. and Mayer, L.A., TracEd: A remote acoustic seafloor characterization system for use with vertical incidence echosounders, Proceedings of the IEEE Oceans, Vol. 2., pp. 1211 –1217

Mayer, L.A., Hughes Clarke, J.E., and Dijkstra, S., 1999, Multibeam Sonar: Potential Applications for Fisheries Research, Jour. Shellfish Research, v. 17, no. 5., 1463- 1467

Goff, J., Orange, D.L., Mayer, L.A., and Hughes Clarke, J.E., 1999, Detailed investigation of continental shelf morphology from a high-resolution swath sonar survey over the Eel River Basin, Northern California, Marine Geology, v. 154, p. 255 – 270.

Borgeld, J.C., Hughes Clarke, J.E., Goff, J.A., Mayer, L.A., and Curtis, J.A., 1999, Acoustic backscatter of the 1995 flood deposit on the Eel Shelf, Marine Geology, v. 154, p. 197 – 210.