

Report Documentation Page

Form Approved
OMB No. 0704-0188

Public reporting burden for the collection of information is estimated to average 1 hour per response, including the time for reviewing instructions, searching existing data sources, gathering and maintaining the data needed, and completing and reviewing the collection of information. Send comments regarding this burden estimate or any other aspect of this collection of information, including suggestions for reducing this burden, to Washington Headquarters Services, Directorate for Information Operations and Reports, 1215 Jefferson Davis Highway, Suite 1204, Arlington VA 22202-4302. Respondents should be aware that notwithstanding any other provision of law, no person shall be subject to a penalty for failing to comply with a collection of information if it does not display a currently valid OMB control number.

1. REPORT DATE SEP 2013		2. REPORT TYPE		3. DATES COVERED 01-08-2013 to 31-08-2013	
4. TITLE AND SUBTITLE Sensei: A Multi-Modal Framework for Assessing Stress Resiliency				5a. CONTRACT NUMBER	
				5b. GRANT NUMBER	
				5c. PROGRAM ELEMENT NUMBER	
6. AUTHOR(S)				5d. PROJECT NUMBER	
				5e. TASK NUMBER	
				5f. WORK UNIT NUMBER	
7. PERFORMING ORGANIZATION NAME(S) AND ADDRESS(ES) SRI International (Sarnoff),201 Washington Rd,Princeton,NJ,08540				8. PERFORMING ORGANIZATION REPORT NUMBER	
9. SPONSORING/MONITORING AGENCY NAME(S) AND ADDRESS(ES)				10. SPONSOR/MONITOR'S ACRONYM(S)	
				11. SPONSOR/MONITOR'S REPORT NUMBER(S)	
12. DISTRIBUTION/AVAILABILITY STATEMENT Approved for public release; distribution unlimited					
13. SUPPLEMENTARY NOTES					
14. ABSTRACT					
15. SUBJECT TERMS					
16. SECURITY CLASSIFICATION OF:			17. LIMITATION OF ABSTRACT	18. NUMBER OF PAGES	19a. NAME OF RESPONSIBLE PERSON
a. REPORT unclassified	b. ABSTRACT unclassified	c. THIS PAGE unclassified			

SRI International (Sarnoff)
(Sensei) Technical Report: Distribution A

Sensei: A Multi-Modal Framework for Assessing Stress Resiliency

(August 1-31, 2013)

From:

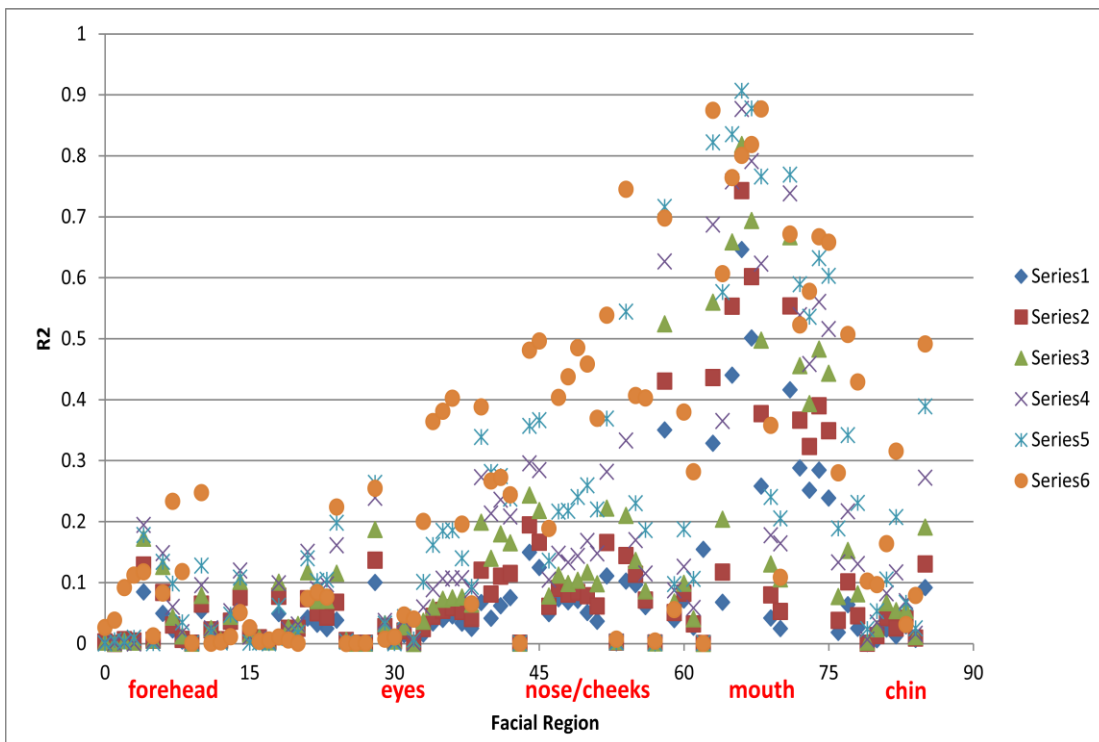
Ajay Divakaran, Technical Leader
Jeffrey Lubin, Senior Research Scientist
Joe Ferraro, Program Manager

Sensei (SRI #P21103)
Contract # N00014-12-C-0288

1 Update: Technical Progress and Accomplishments for Period 19 (August 2013):

During this reporting period, we completed development of the regression approach for predicting fingertip-based skin conductance from facial temperature dynamics, and prepared for presentation of the results of this research at the project PI meeting.

The plot below shows, for each level of temporal filtering (different symbol types and series) the correlation between fingertip-measured skin conductance and facial temperature, as a function of facial region. As predicted earlier, this plot shows an especially strong correlation (about 0.9) between skin conductance and facial cooling in the region of the upper lip.



SRI International (Sarnoff)
(Sensei) Technical Report: Distribution A

More details on these results will be included in the final report to be delivered before the close of the contract.

2. Issues:

- Funding has been terminated.

END OF FILE