

AFFTC-PA-12345



Channel Model Tool Based on Bidirectional Analytic Ray Tracing and Radiative Transfer (CBAR)

**Dr. Chujen Lin, Dr. Satya Ponnaluri, Dr.
Feng Xu, Dr. Yik-Kiong Hue, Mr. David
Mihalcik, Mr. Tom Young, Mr. Mark
Radke, Mr. Kip Temple, Mr. Peter Weed**

**AIR FORCE FLIGHT TEST CENTER
EDWARDS AFB, CA**

3/12/12

**A
F
F
T
C**

Approved for public release; distribution is unlimited.

**AIR FORCE FLIGHT TEST CENTER
EDWARDS AIR FORCE BASE, CALIFORNIA
AIR FORCE MATERIEL COMMAND
UNITED STATES AIR FORCE**



Channel Model Tool Based on Bidirectional Analytic Ray Tracing and Radiative Transfer (CBAR)

The 16th Annual Test Instrumentation Workshop
Las Vegas, Nevada



Presented by Dr. Chujen Lin
Intelligent Automation, Inc.
Rockville, Maryland
May 16, 2012



The authors would like to thank Tom Young, SET Executing Agent, and the Test Resource Management Center (TRMC) Test and Evaluation/Science and Technology (T&E/S&T) Program for their support. This work is funded by the TRMC T&E/S&T Program through the U.S. Army PEO-STRI under contract # W900KK-11-C-0029.

Any opinions, findings and conclusions or recommendations expressed in this material are those of the authors and do not necessarily reflect the views of the TRMC T&E/S&T Program and/or the U.S. Army PEO-STRI.

Pending PA approval: **Approved for public release; distribution is unlimited. AFFTC-PA No.: XXXXX**

Team

- Dr. Chujen Lin (IAI)
- Dr. Satya Ponnaluri (IAI)
- Dr. Feng Xu (IAI)
- Dr. Yik-Kiong Hue (IAI)
- Mr. David Mihalcik (IAI)
- Mr. Tom Young (Air Force)
- Mr. Mark Radke (Air Force)
- Mr. Kip Temple (Air Force)
- Mr. Peter Weed (MITRE)

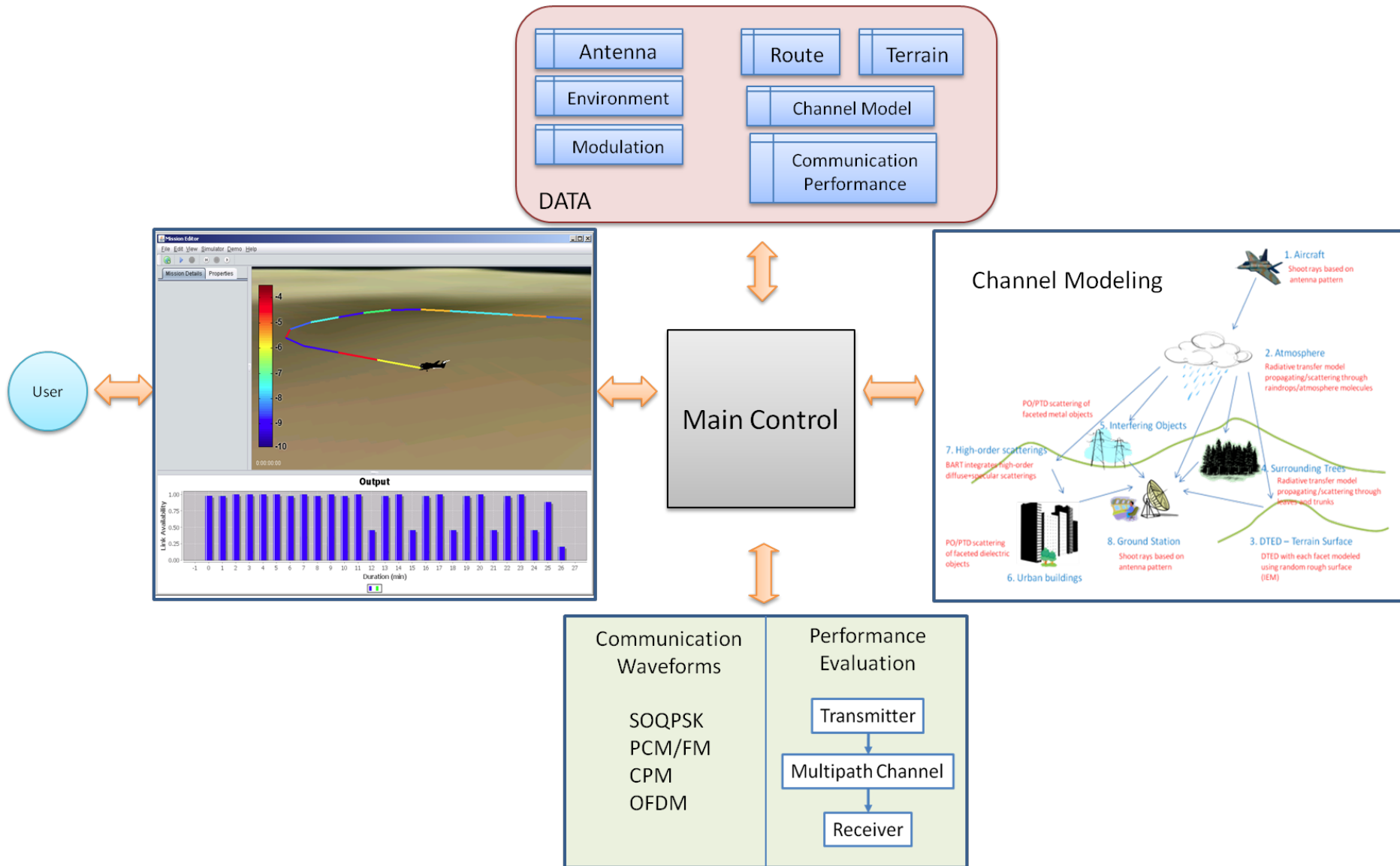
T&E Need

- ❑ Improved channel model to characterize aeronautical channel model in complicated scenarios, such as low flying unmanned aerial vehicles and helicopters over water at high sea states, or in hilly terrain.
- ❑ The need for performance evaluation software that can predict the communication performance when operating using telemetry waveforms.
- ❑ The need for an interactive user interface and dynamic 3D visualization software that will allow the designer to define a particular test scenario as well as visualize the simulation process.

Challenge

- ❑ Channel modeling for aeronautical telemetry involves electrically large objects/scene, therefore requiring a highly efficient 3D ray tracing algorithm in order to minimize the computational load.
- ❑ A range of physics-based electromagnetic EM models are needed that are based on strict theories such as the Maxwell's equations.
- ❑ A dedicated communication performance evaluation tool is needed to evaluate the performance of telemetry waveforms such as ARTM Tier-0 (PCM/FM) and ARTM Tier-1 (SOQPSK-TG), as well as as integrated Networking Enhanced Telemetry (iNET) standards, in relevant environments.

CBAR Overview



Components of CBAR

CBAR is designed to have the following features:

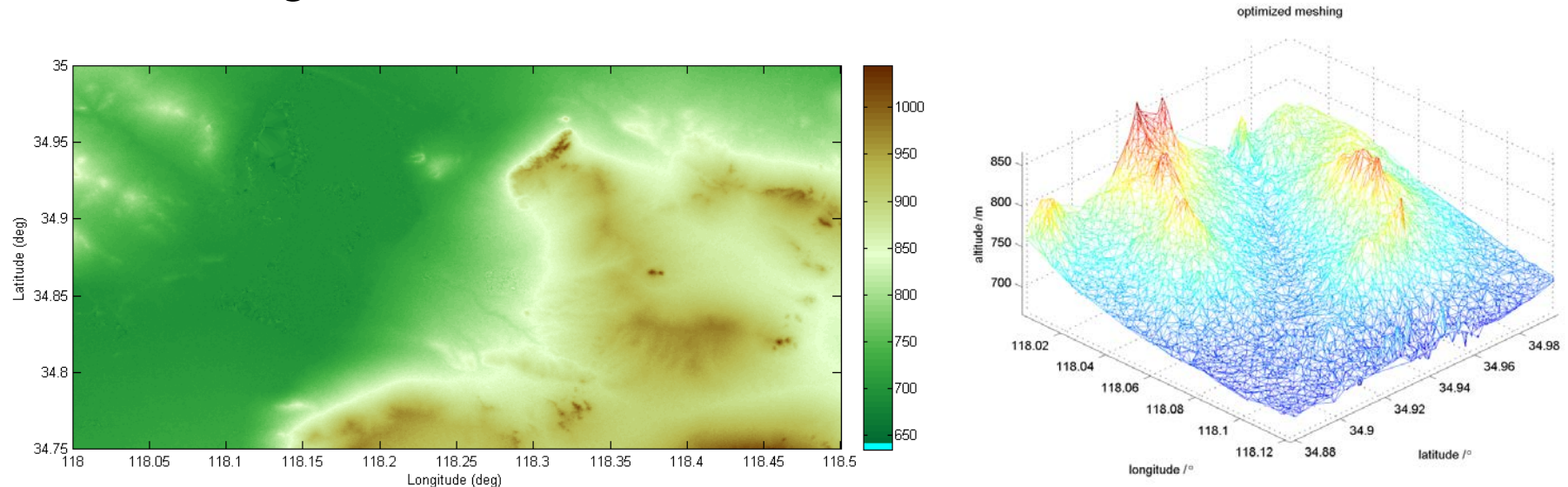
1. A ***channel modeling component*** that combines information about the environment, antenna patterns of the aircraft and ground link to generate channel impulse response for an aircraft to ground link in L, C and S bands.
2. A ***communication performance estimation component*** that utilizes channel impulse response information to estimate telemetry performance metrics such as bit error rate and link availability for modulation schemes such as SOQPSK, PCM/FM and OFDM.

Components of CBAR, cont.

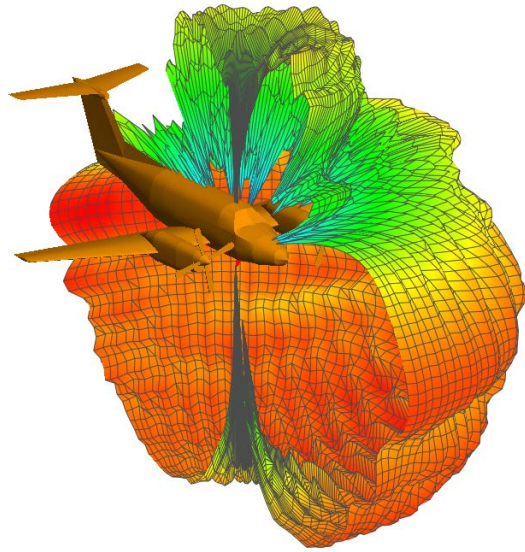
3. A ***user interface*** that allows users to specify simulation conditions such as ground station location and aircraft flight path, as well as edit analysis parameters such as link availability threshold.
4. A ***visualization component*** that displays information such as the flight path and communication performance metrics, as well as provide user with three-dimensional handles to view the simulation environment.

Channel modeling: Loading Terrain Data

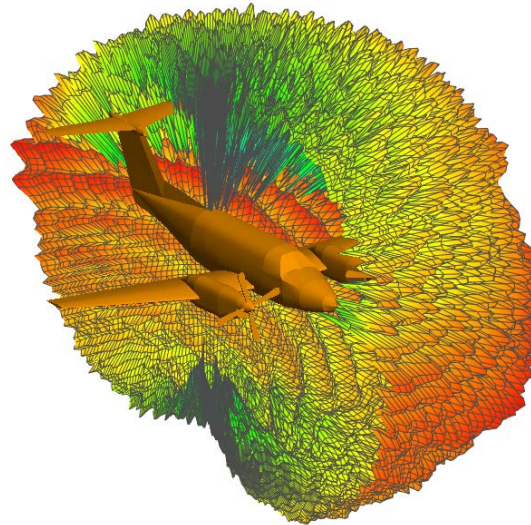
- ❑ CBAR uses terrain data encoded in the Digital Terrain Elevation Data (DTED) format.
- ❑ CBAR will select the appropriate terrain data automatically based on the selected GCS location and the flight path.
- ❑ Terrain data is remeshed by CBAR for efficient ray tracing.



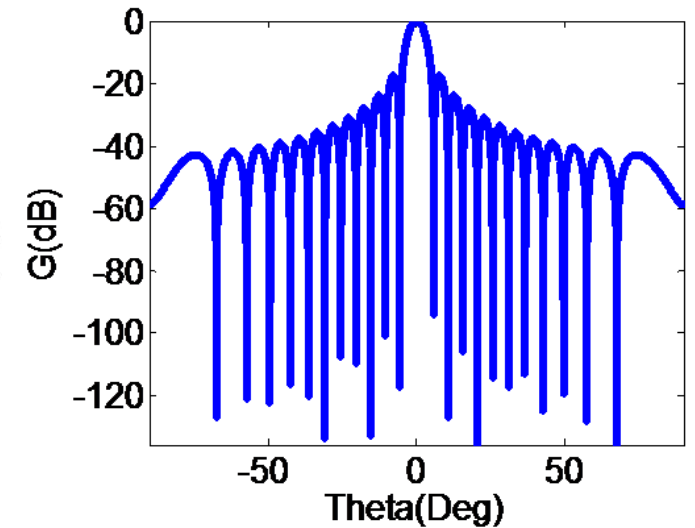
Channel Modeling : Antenna Pattern



C12 with bottom antenna



C12 with top and bottom antennas (20:80)

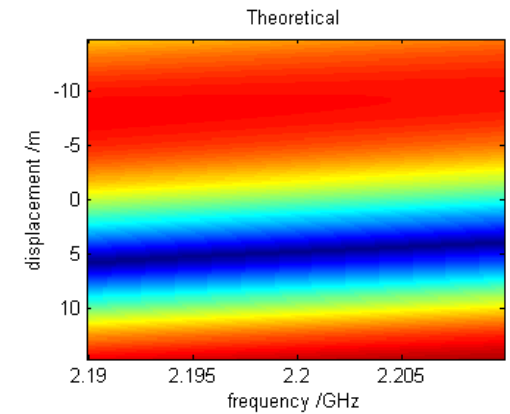
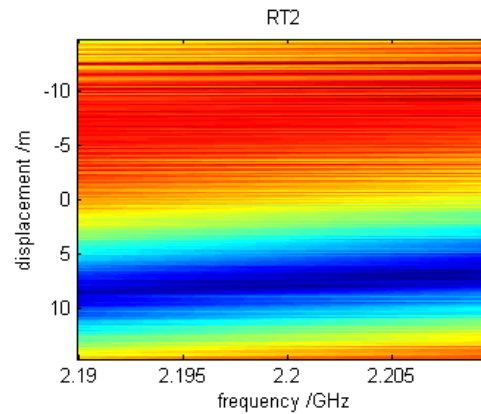
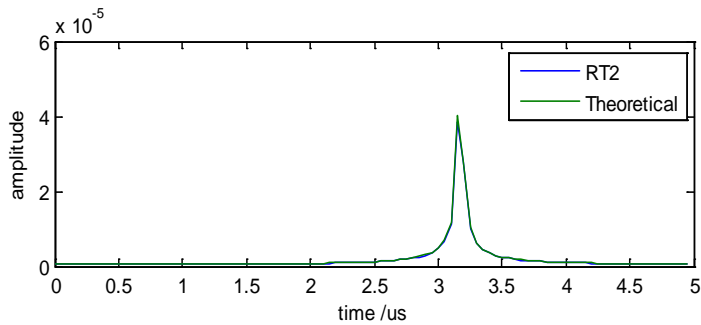
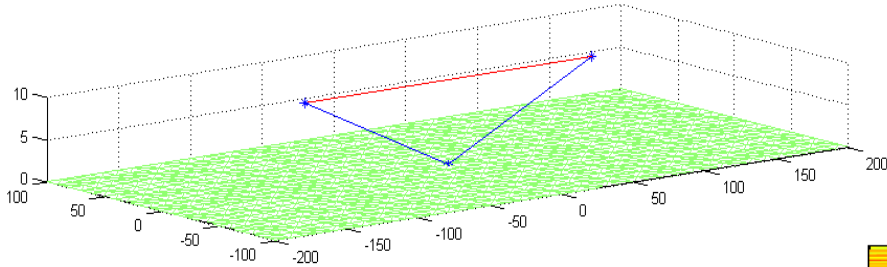


Ground station 8-ft parabolic reflector antenna pattern

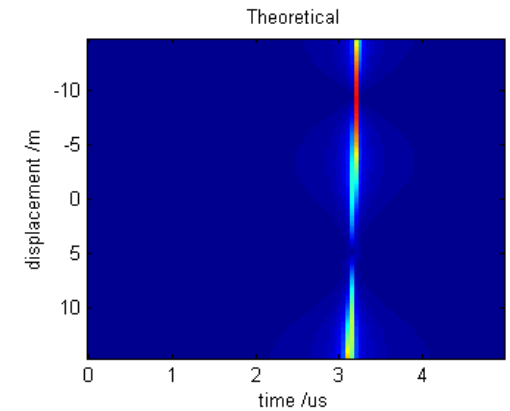
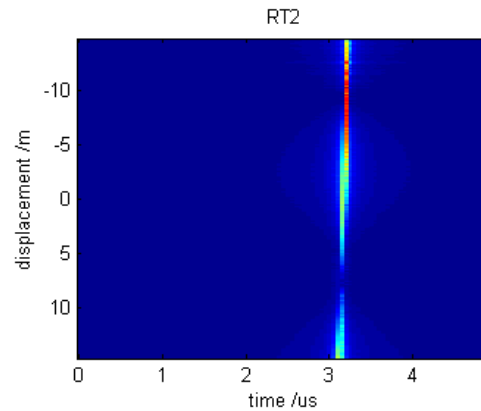
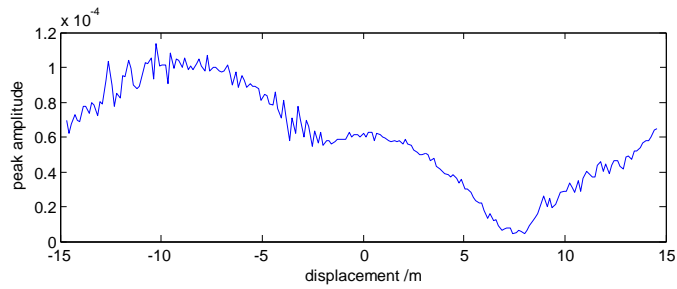
Channel Modeling: Ray Tracing

Examples -- Flat Terrain

Flat surface (200m*100m). Tx and Rx are located 10m above ground with 200m horizontal separation. Center frequency is 2.2GHz with 20MHz bandwidth. Omnidirectional patterns are assumed both for Tx and Rx.



Cross section at 0m displacement

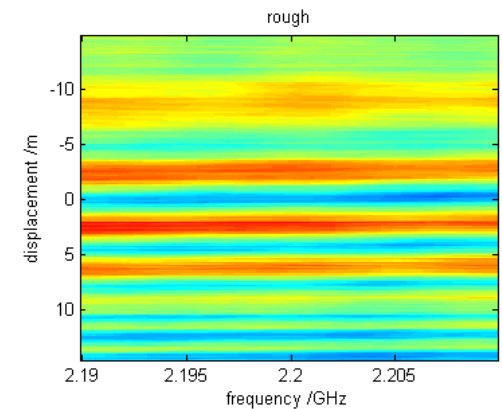
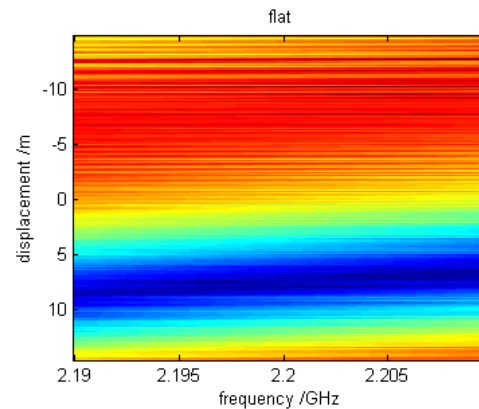
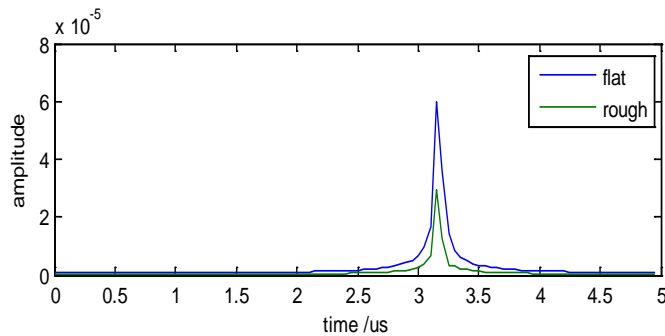
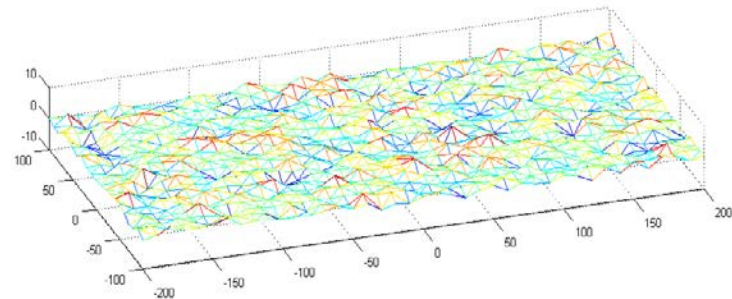


Peak amplitude vs. displacement

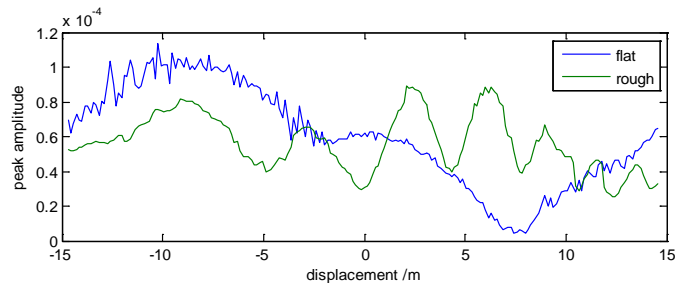
Channel Modeling: Ray Tracing

Examples -- Rough Terrain

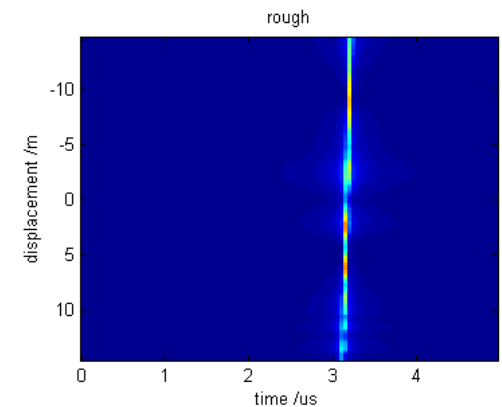
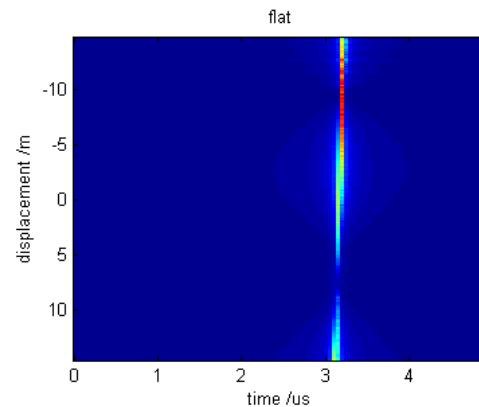
Same ground mesh with z coordinates of each node perturbed by a Gaussian random number with variance of 2m



Cross section at 0m displacement.

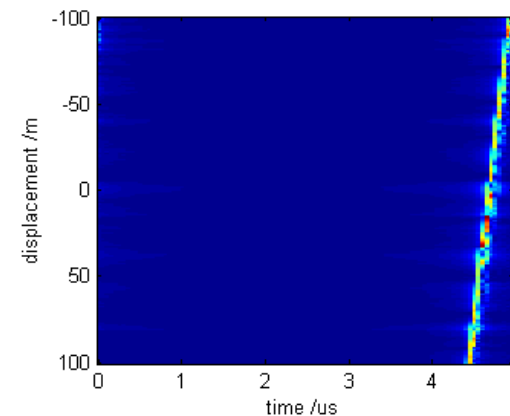
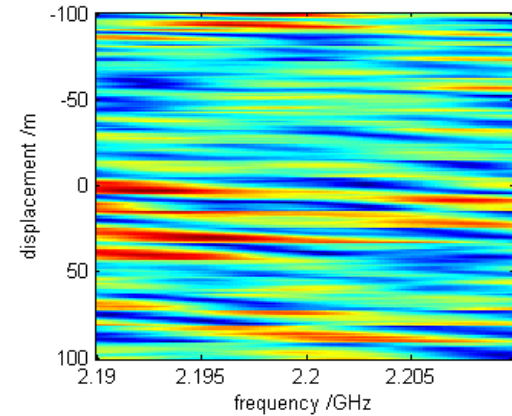
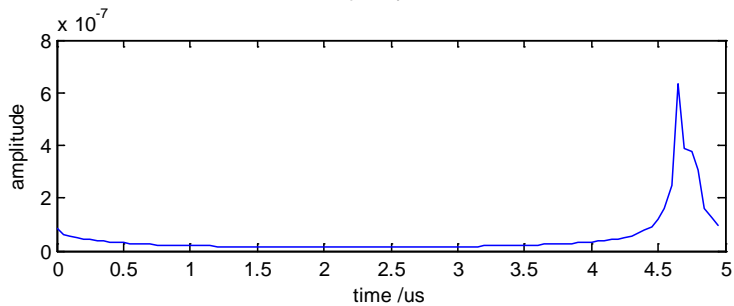
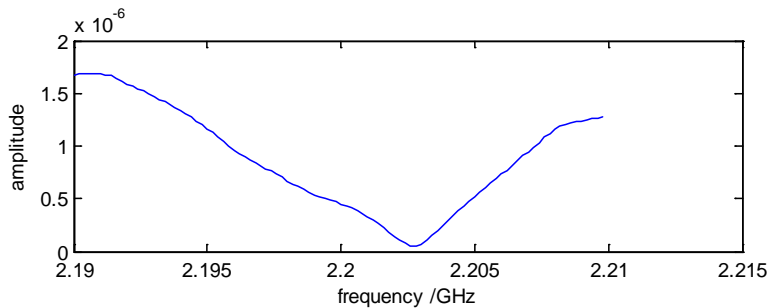
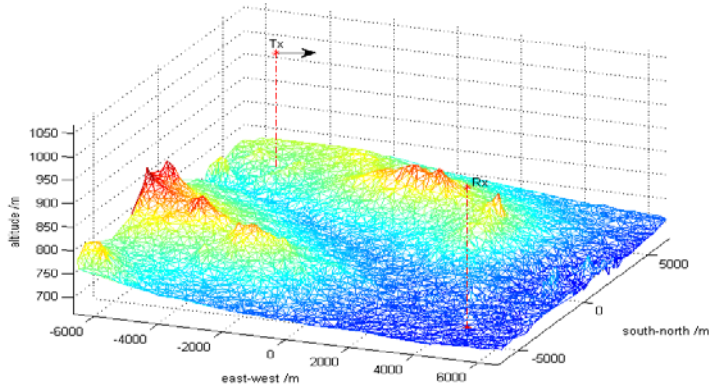


Peak amplitude vs. displacement



Channel Modeling: Ray Tracing Examples -- Realistic Terrain

10km by 10km centered at (34.9369°, 118.0628°) (near Edwards AFB)

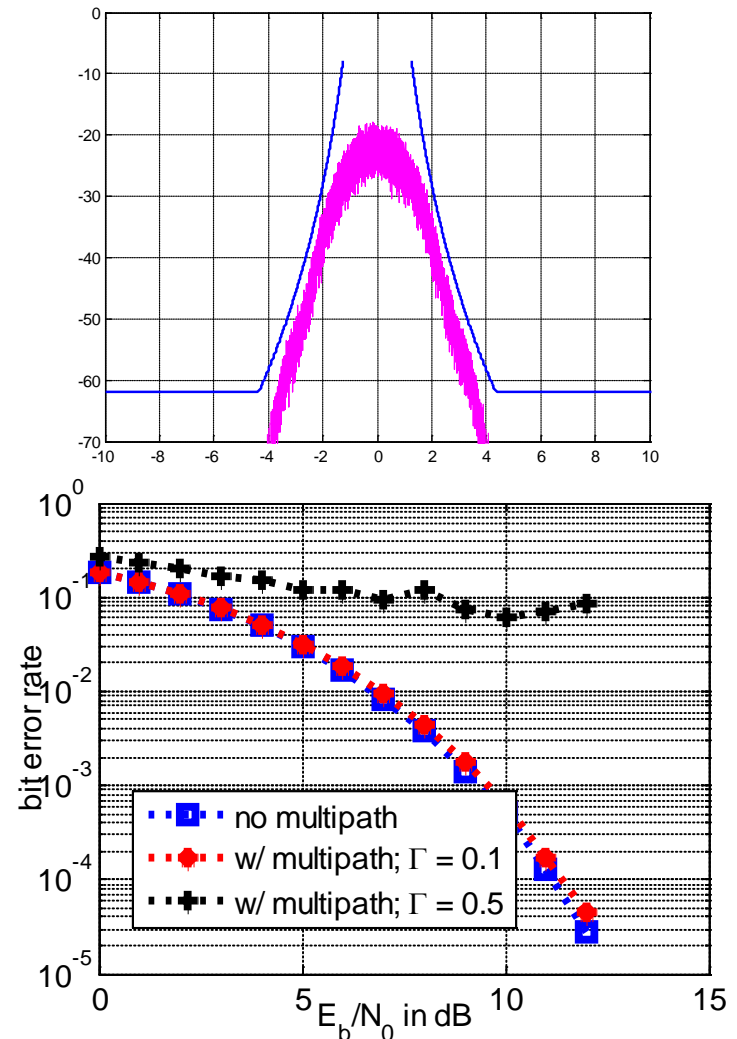


Cross section at 0m displacement

Communication Performance

- ❑ SOPQSK and PCM/FM transmitter and receiver models based on the MATLAB codes developed by Prof. Erik Perrins of Kansas University. Modified by IAI to study the BER performance under a variety of channel conditions, such as line-of-sight, multi-path, Doppler shift.
- ❑ The receiver for SOQPSK consists of a timing and frequency synchronization, followed by symbol-by-symbol detection and frame synchronization.
- ❑ The receiver for PCM/FM consists of a limiter-discriminator, followed by timing synchronization, decoding and frame synchronization.
- ❑ iNET-like OFDM transmitter and receiver models have been developed by IAI.

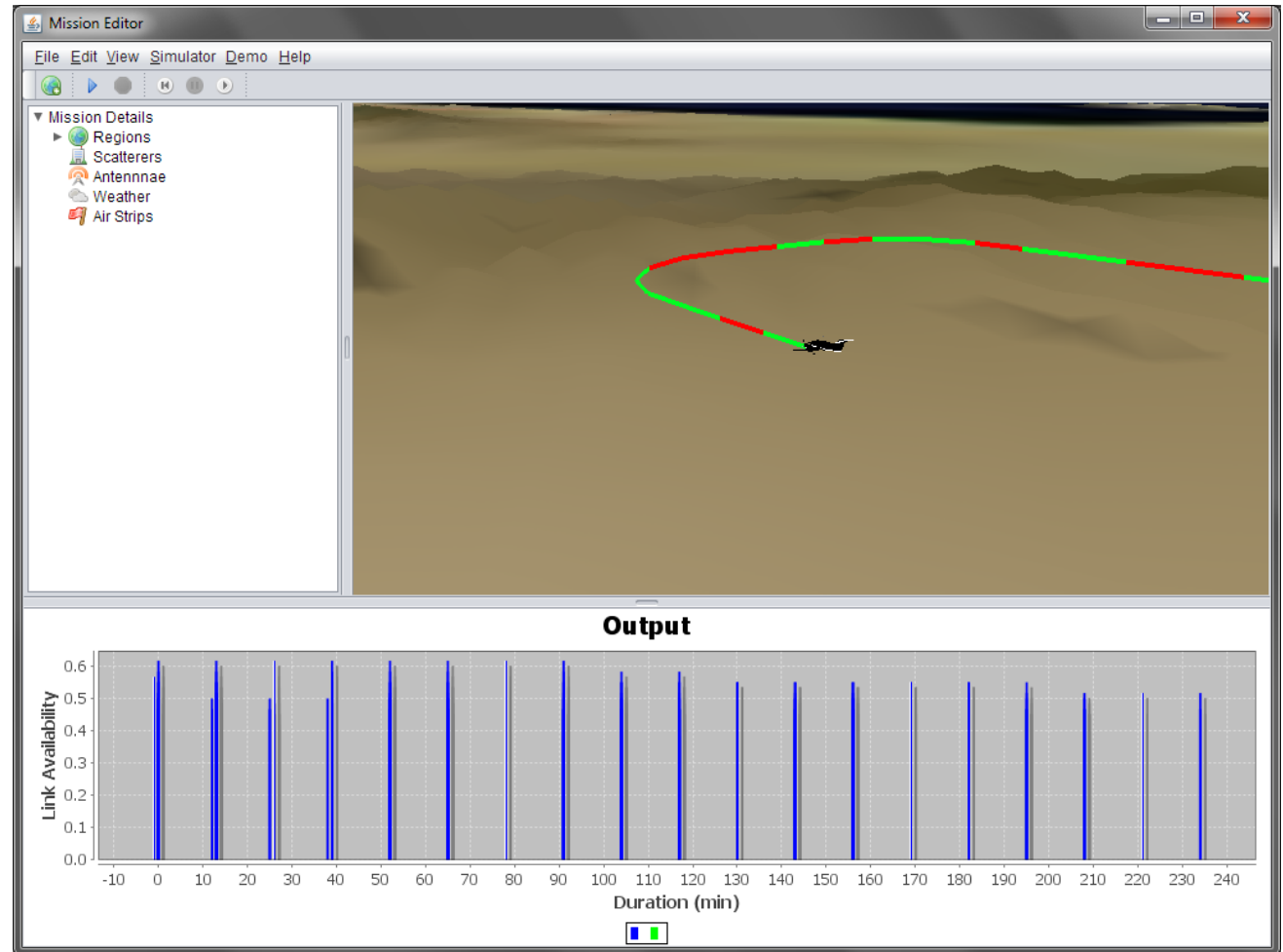
Spectrum and spectral mask for SOQPSK



Performance of SOQPSK in the presence of multipath.

Visualization

- The flight path is colored to indicate the regions of varying link availability.
- Link availability is the percentage of time the quality exceeds a threshold.

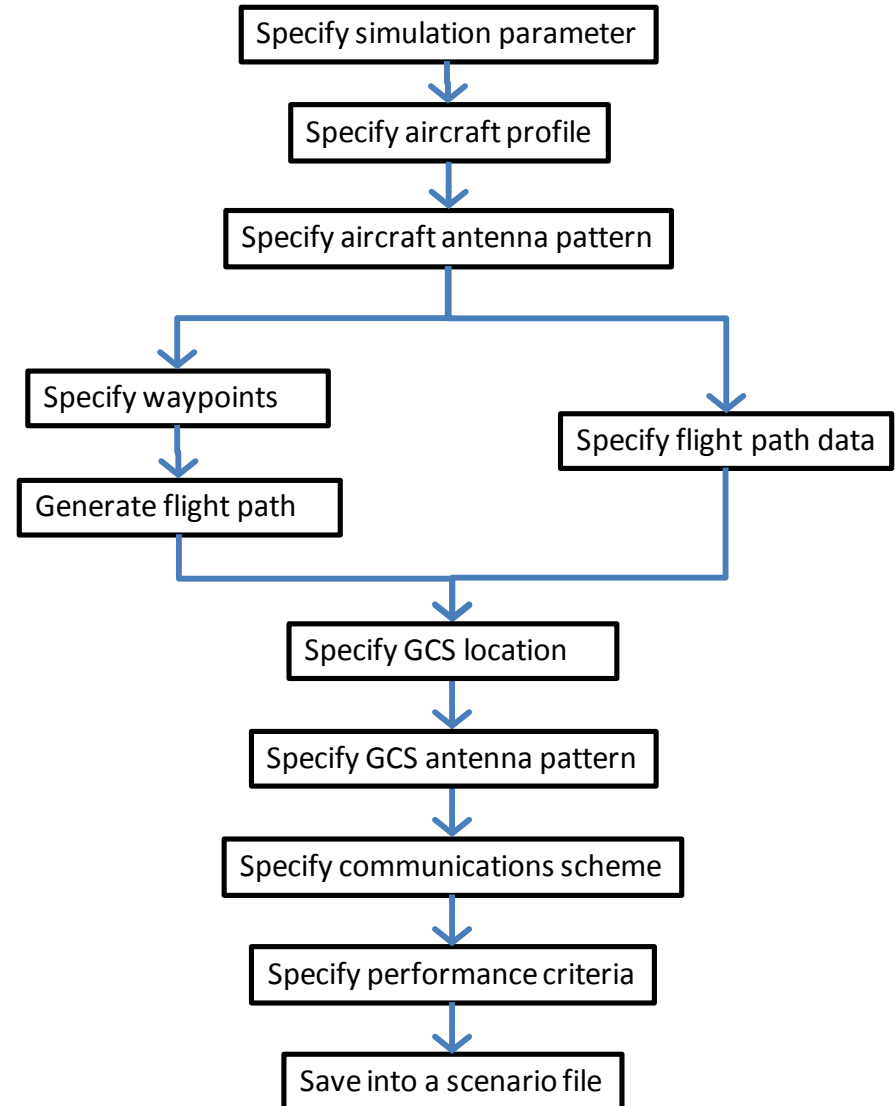


Typical use cases and operations

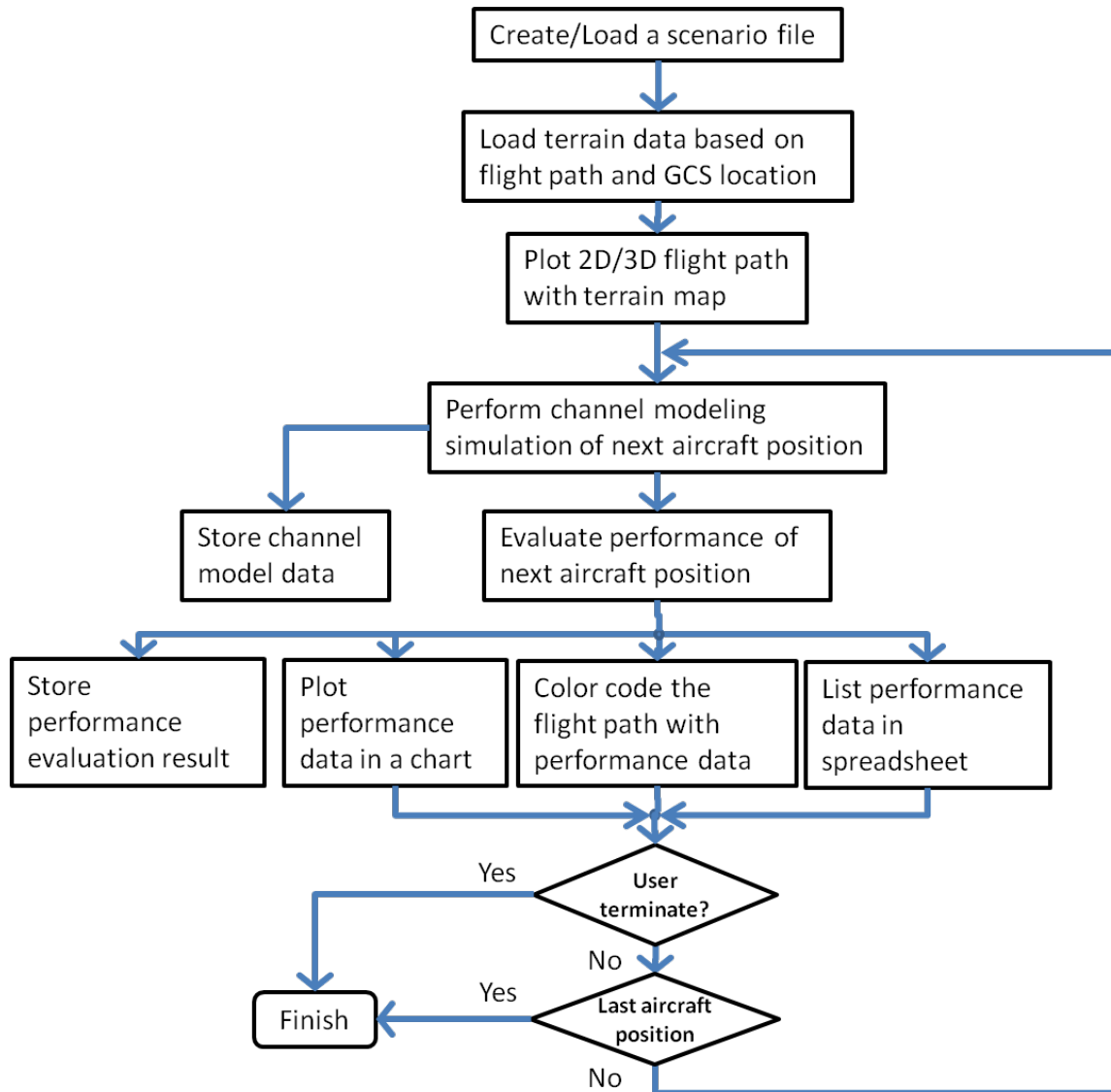
- **Step 1: Generate a scenario file with appropriate configuration parameters.**
- **Step 2: Run simulation for the entire mission duration in desired time-steps.**
- **Step 3: Evaluate communication performance, identify flight segment(s) with poor performance, and re-run the simulation focusing on the relevant segment(s).**

Step1: Generate scenario file

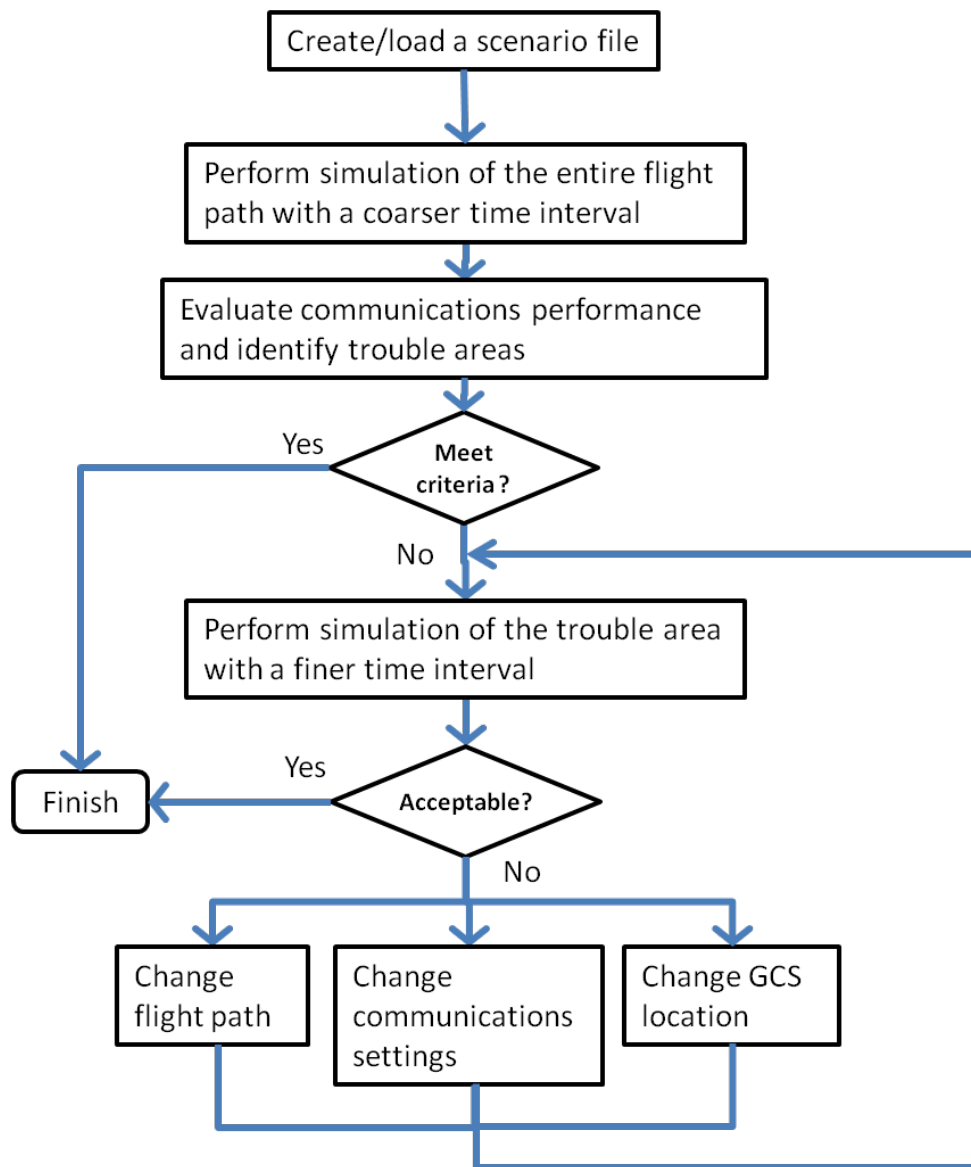
Scenario file is a file that contains important simulation properties such as aircraft and ground station configuration, aircraft flight path, channel modeling fidelity, and communication performance parameters.



Step 2: Run Simulation



Step 3: Evaluate performance and re-run simulation



Wrap Up

- ❑ A fast and efficient ray-tracing tool that incorporates not only geographic effects but also geophysical properties.
- ❑ A statistical modeling approach that can generate properties of a wireless channel such as multipath delay spread and propagation path loss for a given geographical area.
- ❑ A bit error rate (BER) evaluation tool that allows a user to measure performance characteristics of communication schemes.
- ❑ A professional 3D GUI that allows users to interactively design the scenario and visualize the simulation process.