

Lake Erie Regional Sediment Management and Sediment Budget

Andrew Morang and Ashley C. Frey

Coastal and Hydraulics Laboratory
Engineer Research and Development Center
Vicksburg, MS

Michael C. Mohr and Shanon Chader

U.S. Army Engineer District, Buffalo
Buffalo, NY



Coastal Zone 2011
Chicago, Illinois
July 21, 2011



**US Army Corps
of Engineers®**
Engineer Research and
Development Center



**US Army Corps
of Engineers®**
Buffalo District

Report Documentation Page

Form Approved
OMB No. 0704-0188

Public reporting burden for the collection of information is estimated to average 1 hour per response, including the time for reviewing instructions, searching existing data sources, gathering and maintaining the data needed, and completing and reviewing the collection of information. Send comments regarding this burden estimate or any other aspect of this collection of information, including suggestions for reducing this burden, to Washington Headquarters Services, Directorate for Information Operations and Reports, 1215 Jefferson Davis Highway, Suite 1204, Arlington VA 22202-4302. Respondents should be aware that notwithstanding any other provision of law, no person shall be subject to a penalty for failing to comply with a collection of information if it does not display a currently valid OMB control number.

| | | | | | |
|---|------------------------------------|-------------------------------------|---|--|---------------------------------|
| 1. REPORT DATE 21 JUL 2011 | | 2. REPORT TYPE N/A | | 3. DATES COVERED - | |
| 4. TITLE AND SUBTITLE Lake Erie Regional Sediment Management and Sediment Budget | | | | 5a. CONTRACT NUMBER | |
| | | | | 5b. GRANT NUMBER | |
| | | | | 5c. PROGRAM ELEMENT NUMBER | |
| 6. AUTHOR(S) Morang, Andrew; Frey, Ashley C.; Mohr, Michael C.; Chader, Shanon | | | | 5d. PROJECT NUMBER | |
| | | | | 5e. TASK NUMBER | |
| | | | | 5f. WORK UNIT NUMBER | |
| 7. PERFORMING ORGANIZATION NAME(S) AND ADDRESS(ES) Coastal and Hydraulics Laboratory, Engineer Research and Development Center, Vicksburg, MS; US Army Engineer District, Buffalo, NY | | | | 8. PERFORMING ORGANIZATION REPORT NUMBER | |
| | | | | | |
| 9. SPONSORING/MONITORING AGENCY NAME(S) AND ADDRESS(ES) | | | | 10. SPONSOR/MONITOR'S ACRONYM(S) | |
| | | | | 11. SPONSOR/MONITOR'S REPORT NUMBER(S) | |
| 12. DISTRIBUTION/AVAILABILITY STATEMENT Approved for public release, distribution unlimited | | | | | |
| 13. SUPPLEMENTARY NOTES The original document contains color images. | | | | | |
| 14. ABSTRACT Presentation on Lake Erie regional sediment management and sediment budget at Coastal Zone 2011 in Chicago, IL. | | | | | |
| 15. SUBJECT TERMS | | | | | |
| 16. SECURITY CLASSIFICATION OF: | | | 17. LIMITATION OF ABSTRACT UU | 18. NUMBER OF PAGES 23 | 19a. NAME OF RESPONSIBLE PERSON |
| a. REPORT unclassified | b. ABSTRACT unclassified | c. THIS PAGE unclassified | | | |

Outline

1. Background and purpose
2. Phase I. Overview of sediments and transport processes
3. Phase II. Sediment budget (in progress NY, PA, and OH)
4. Future work (MI, data sharing, implement RSM principles)

Problem Statement

- Great Lakes navigation projects in past were managed as isolated entities
- Need data and fundamental background science on what is happening in the entire system
- Need tools to inform decisions on sediment management affecting whole system, not just individual projects
- Potential changes from climate change (less ice? greater storminess?)
- Limited capacity in existing CDFs and high cost and environmental limitations for new CDFs

Phase I

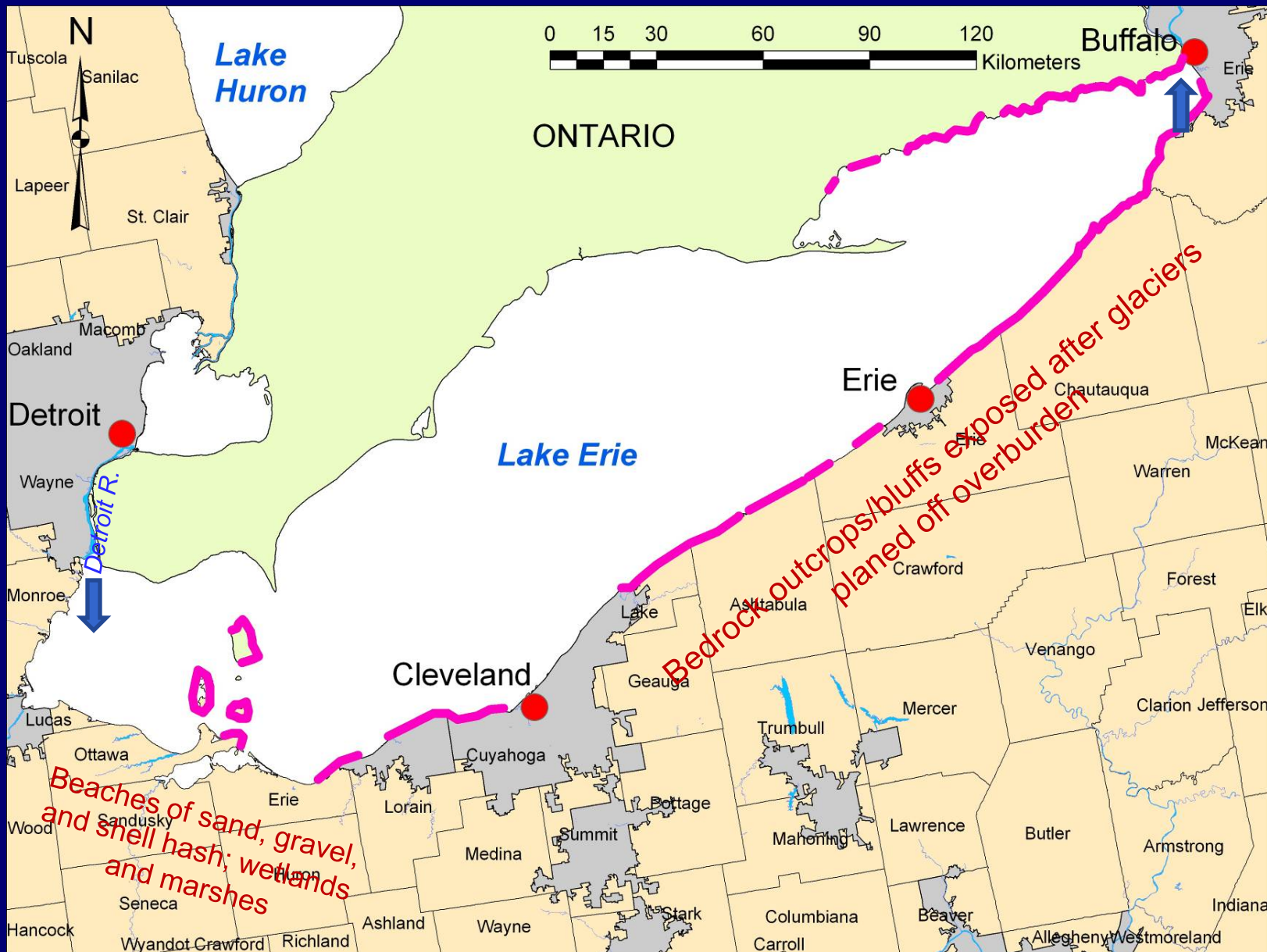
- Overview analysis:
 - Sediment sources and sinks
 - Physical processes (waves, water levels, ice)
 - Lake Erie geology
 - Jetties, harbors, man-made obstructions
 - Transport directions
- Cooperative effort between ERDC, Buffalo District, PA DNR, and Ohio Geological Survey
- Compiled information from widely scattered technical literature, USACE unpub. data, USGS, expertise from Ohio Geol. Survey

Lake Erie Framework

Surface:
25,670
km², 4th
largest
Lake

95 % total
inflow from
upper
lakes via
Detroit R.

Shallowest
lake, vul-
nerable to
fluctuating
water level
and
seiching



West Lake Erie

Barrier spit at Sheldon Marsh State Nature Preserve, April 2005. One of the few remaining unarmored beaches in western Ohio - example of terrain that would have been common here 150 years ago.



Sandusky Bay, Aug 1999. Marshy shores consist of low clay banks with minor fine sand.

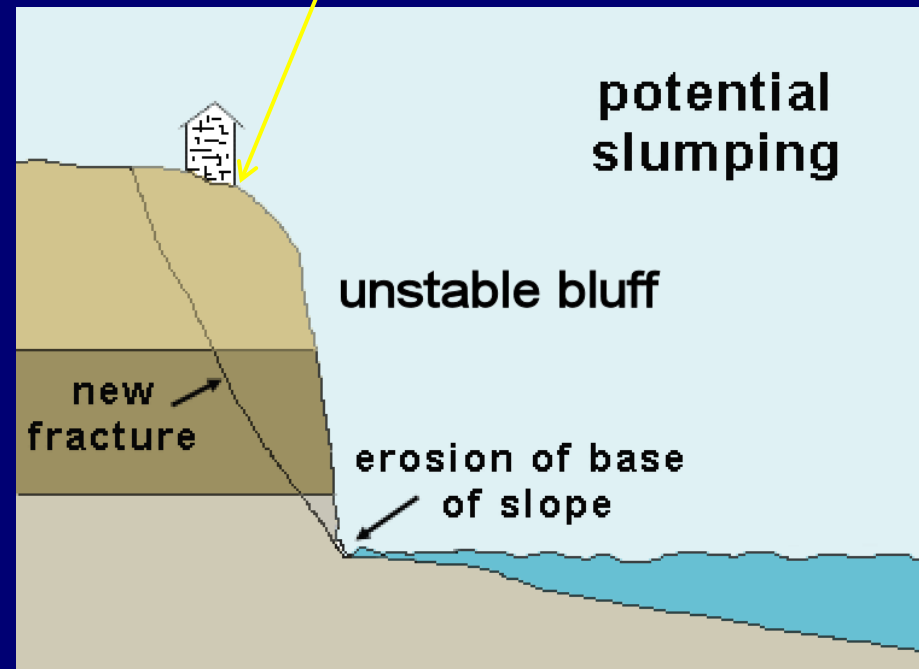


East Lake Erie

Showse Park, east of Vermillion, OH, August 1999. Low-grade, friable shale weathers from wave impact, groundwater percolation, and freeze-thaw cycles.



Bluff edge



potential
slumping

unstable bluff

new
fracture

erosion of base
of slope

East L. Erie, cont.

Shale bluffs near Evans, NY,
1995. Fragments weather into
beach sand



Shale slabs in shallow
water, North East, PA,
1994. Waves move some
sediment to beaches



Sediment Sources - Losses

- **Sediment sources:**

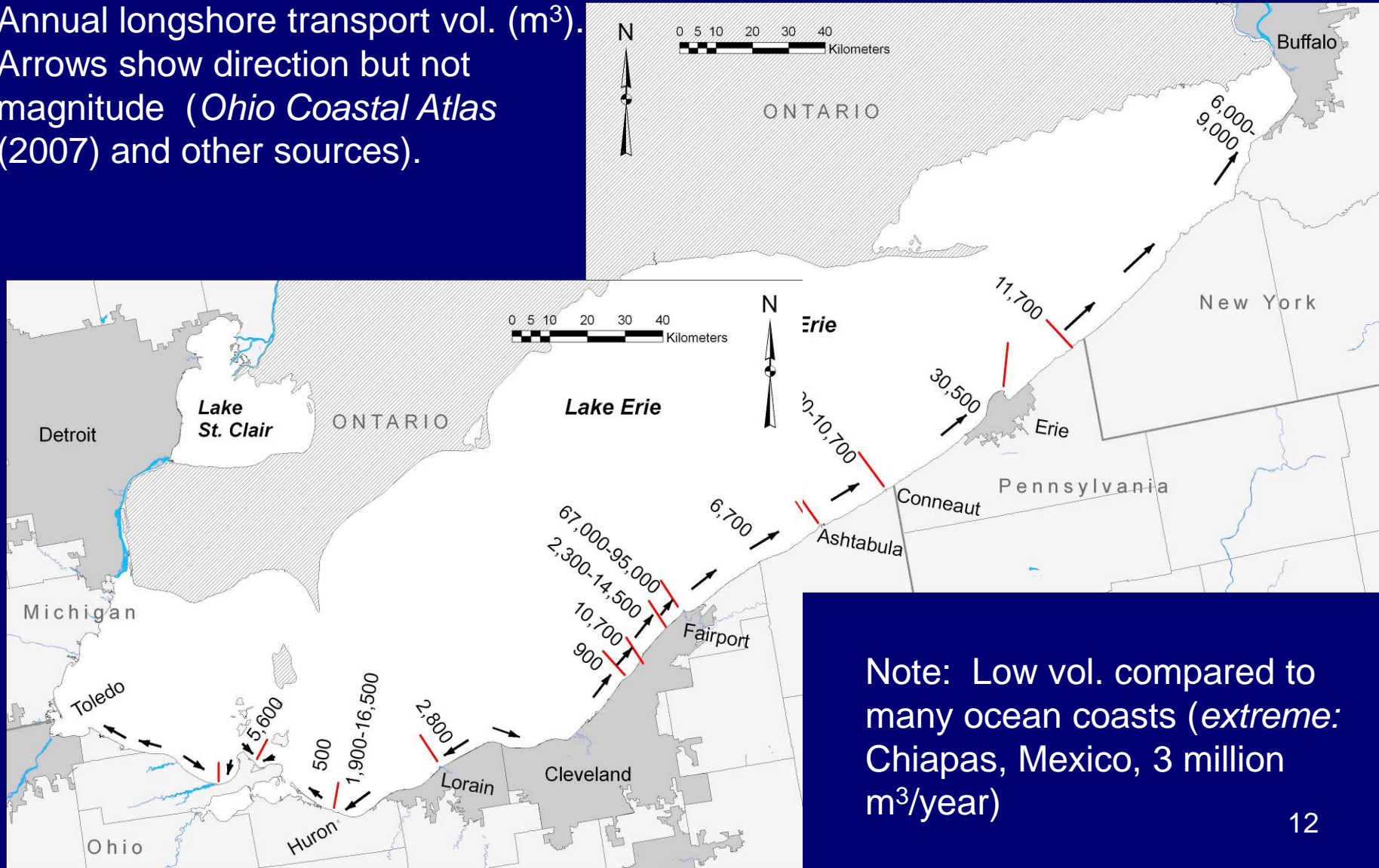
- Material brought down rivers (mostly fine-grained)
- Industrial dumping and runoff from sewers
- Gravel, sand, and clay eroded from glacial till bluffs and clay banks
- Sediment created in situ from bedrock bluff weathering
- Limited supply from lake bed lowering and offshore outcrops

- **Sediment losses:**

- Wave- and ice-induced transport into deep water
- Material trapped in fillets at harbor jetties
- Material dredging from harbor entrance channel and placed in confined disposal facilities or placed in deep water
- Bluff armoring
- Beach mining (no longer a factor)

Longshore Sediment Transport

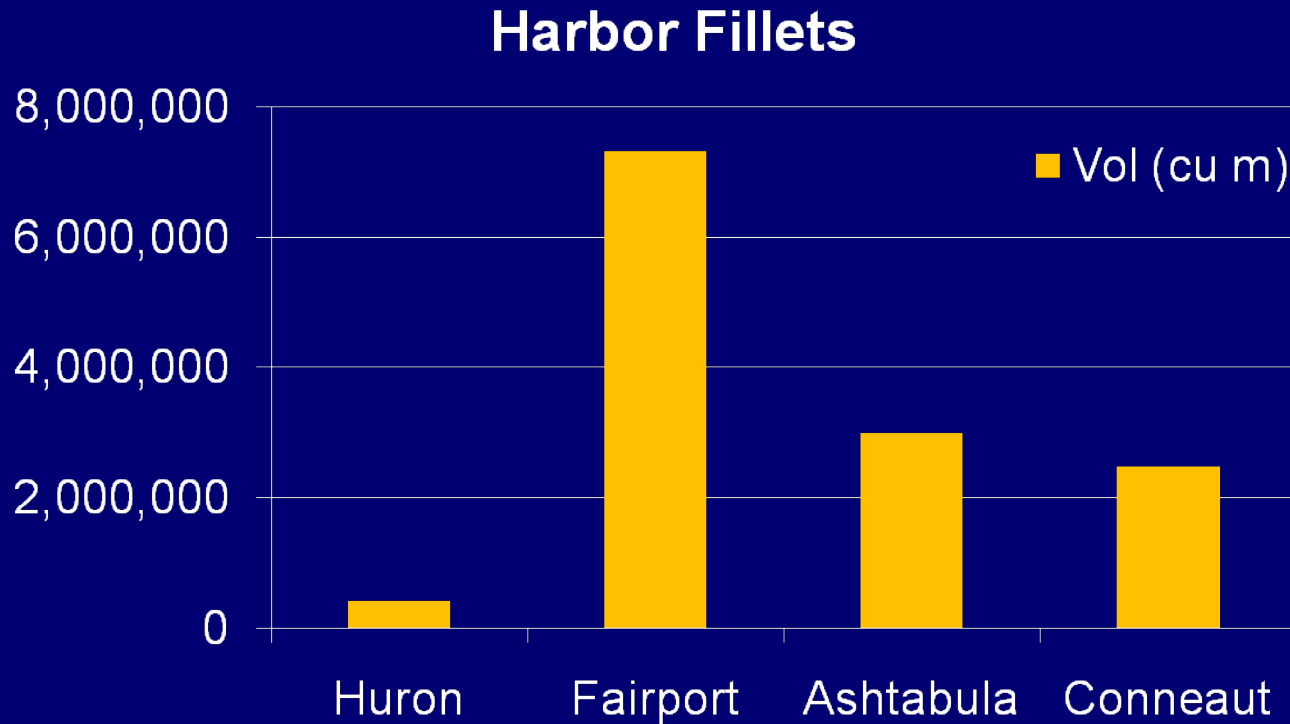
Annual longshore transport vol. (m^3).
Arrows show direction but not magnitude (*Ohio Coastal Atlas* (2007) and other sources).



Note: Low vol. compared to many ocean coasts (*extreme*: Chiapas, Mexico, 3 million m^3 /year)

Trapping at Harbor Mouths

- Greatest loss of sed. from littoral system over 150 years
- 27 harbors, power plants with structures



FEDERAL HARBOR AS LITTORAL BARRIER

LAKE ERIE

WEST BREAKWATER

EAST BREAKWATER

CONNELLY HARBOR

TRAPPED SAND

NET MOVEMENT



0 3000
SCALE IN FEET



Phase II: Sediment Budget

- Define littoral cells based on geologic or morphologic characteristics
- Evaluate bluff recession (ERDC)
- Calculate volumes at jetty fillets (LRB)
- Tabulate dredge volumes from Fed. navigation channels (LRB)
- Sediment Budget Analysis System (SBAS) extension within ArcMap™ GIS software

Littoral Cells



Silt, clay lost offshore,
sand to harbor fillet

Barcelona

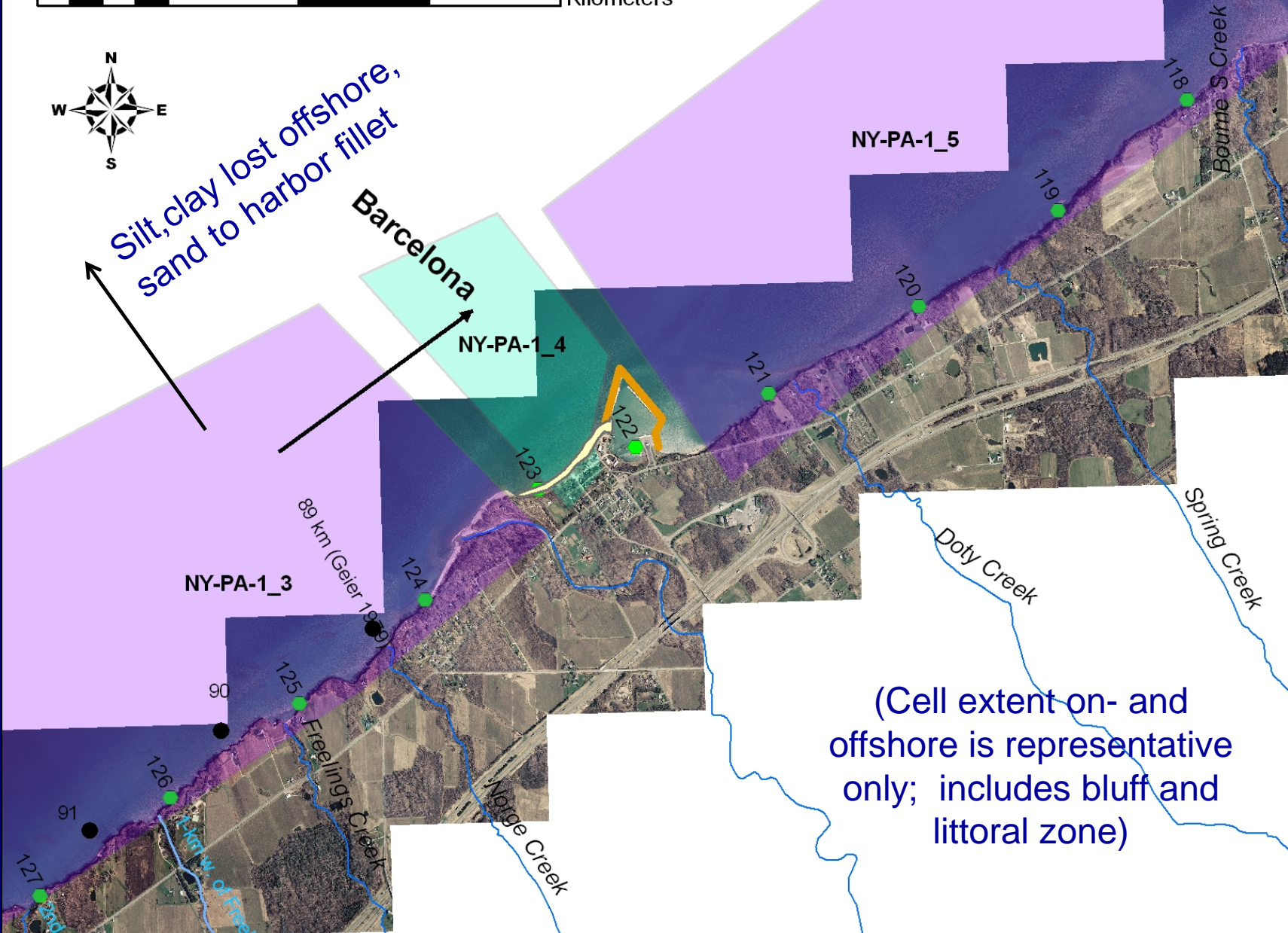
NY-PA-1_4

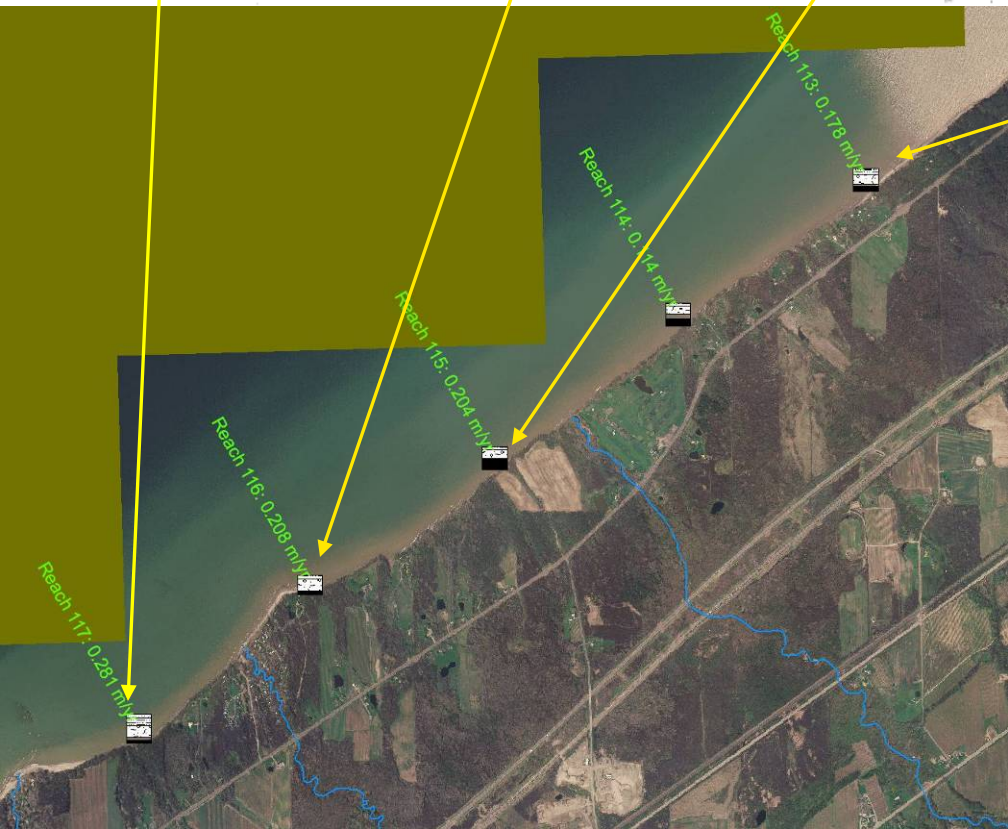
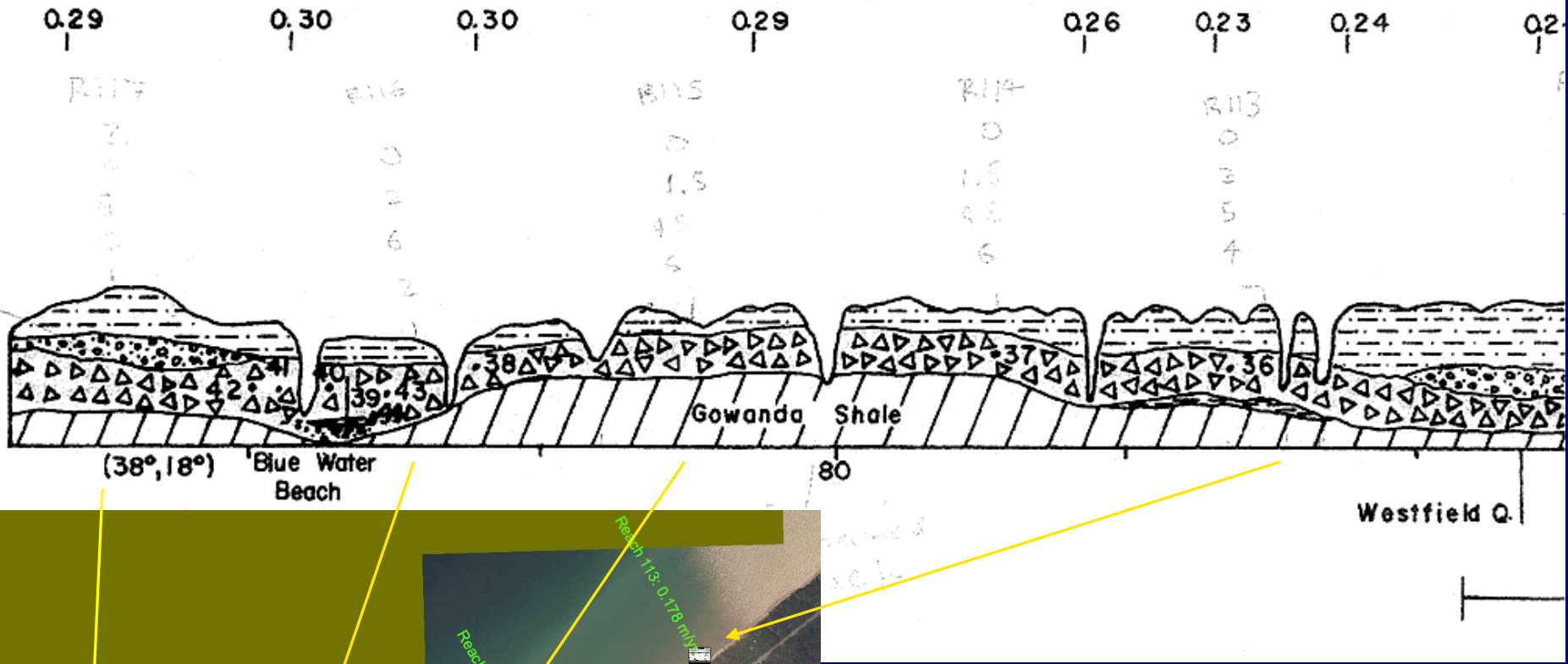
NY-PA-1_5

NY-PA-1_3

89 km (Geier 1999)

(Cell extent on- and offshore is representative only; includes bluff and littoral zone)





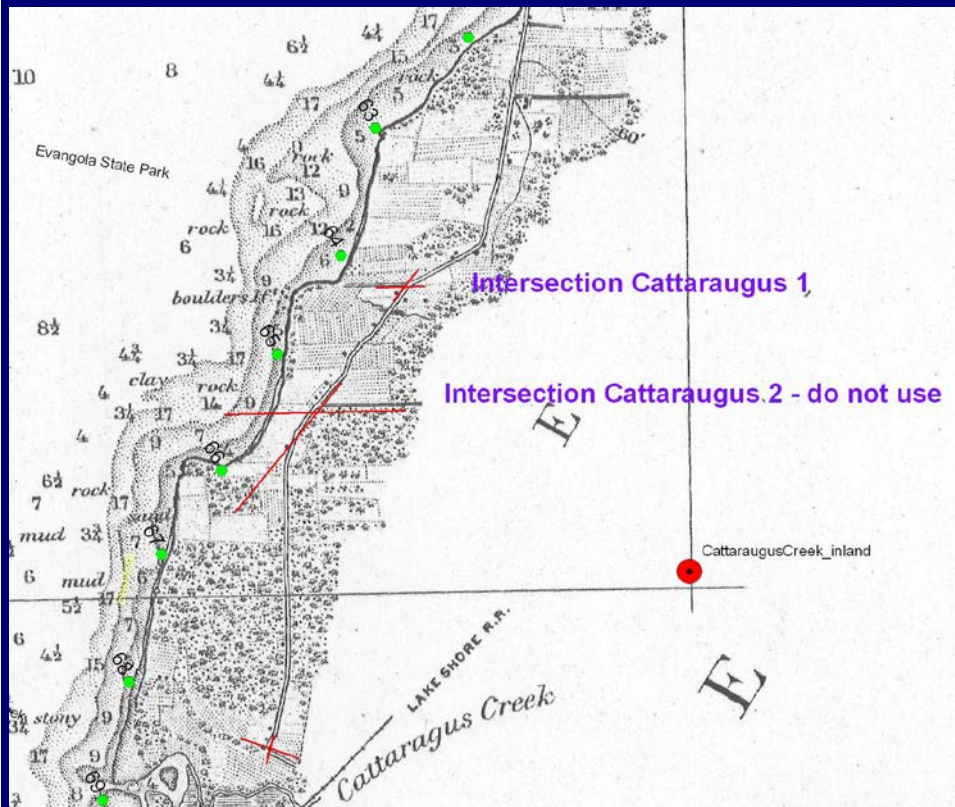
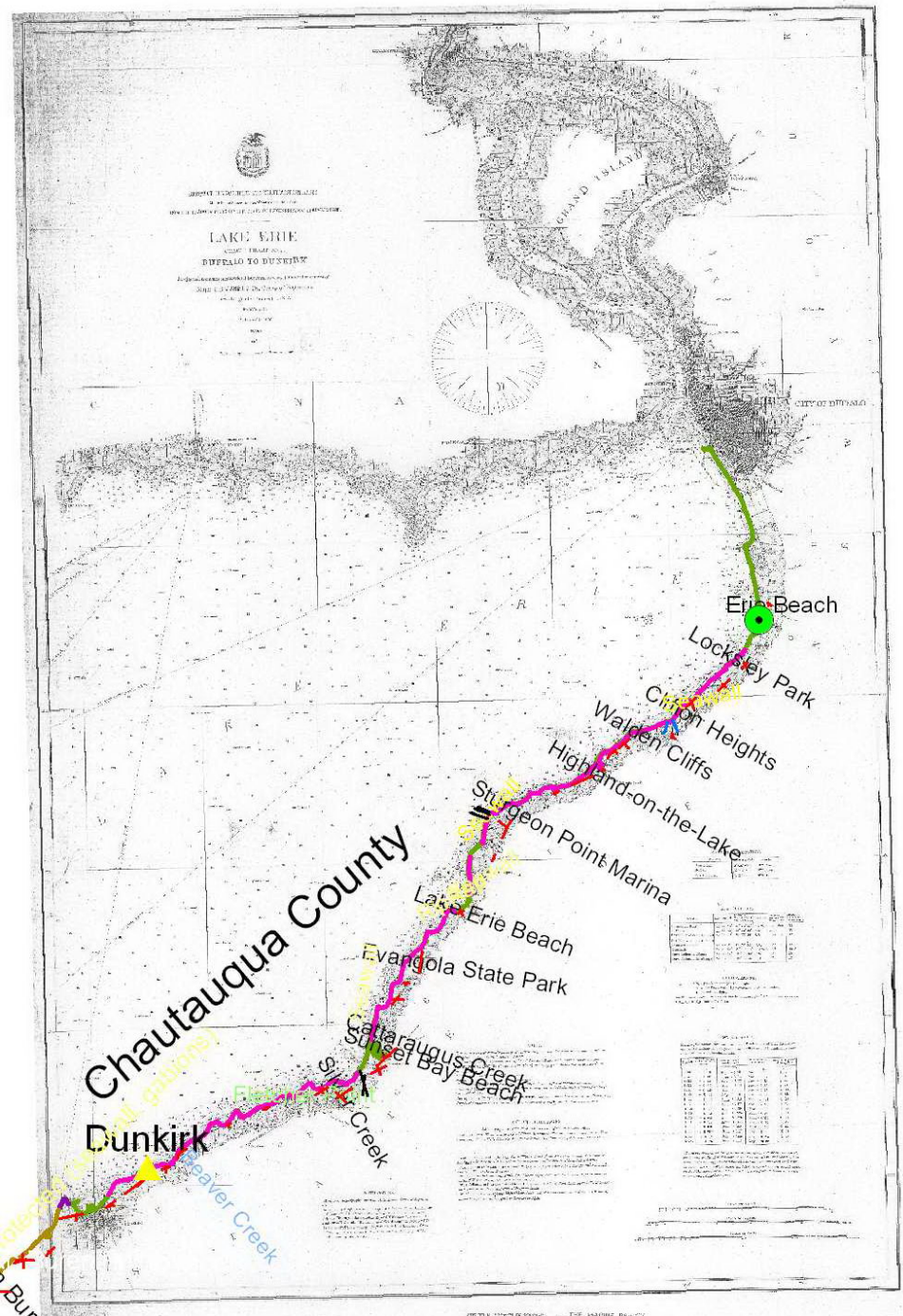
Bluff Stratigraphy

Tot. sed. vol. = bluff height
reach width retreat distance

Beach sed. vol. = tot. vol.
coarse content

Historical Data

1870s USACE Lake Survey charts

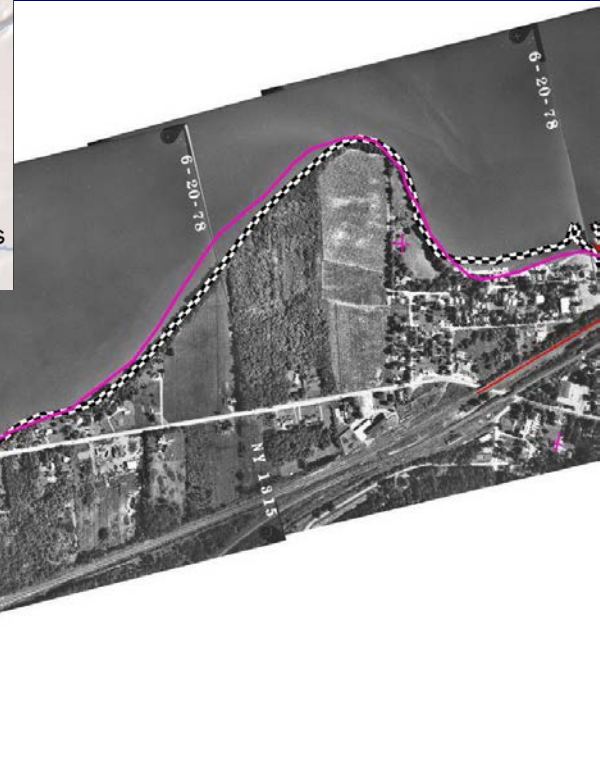
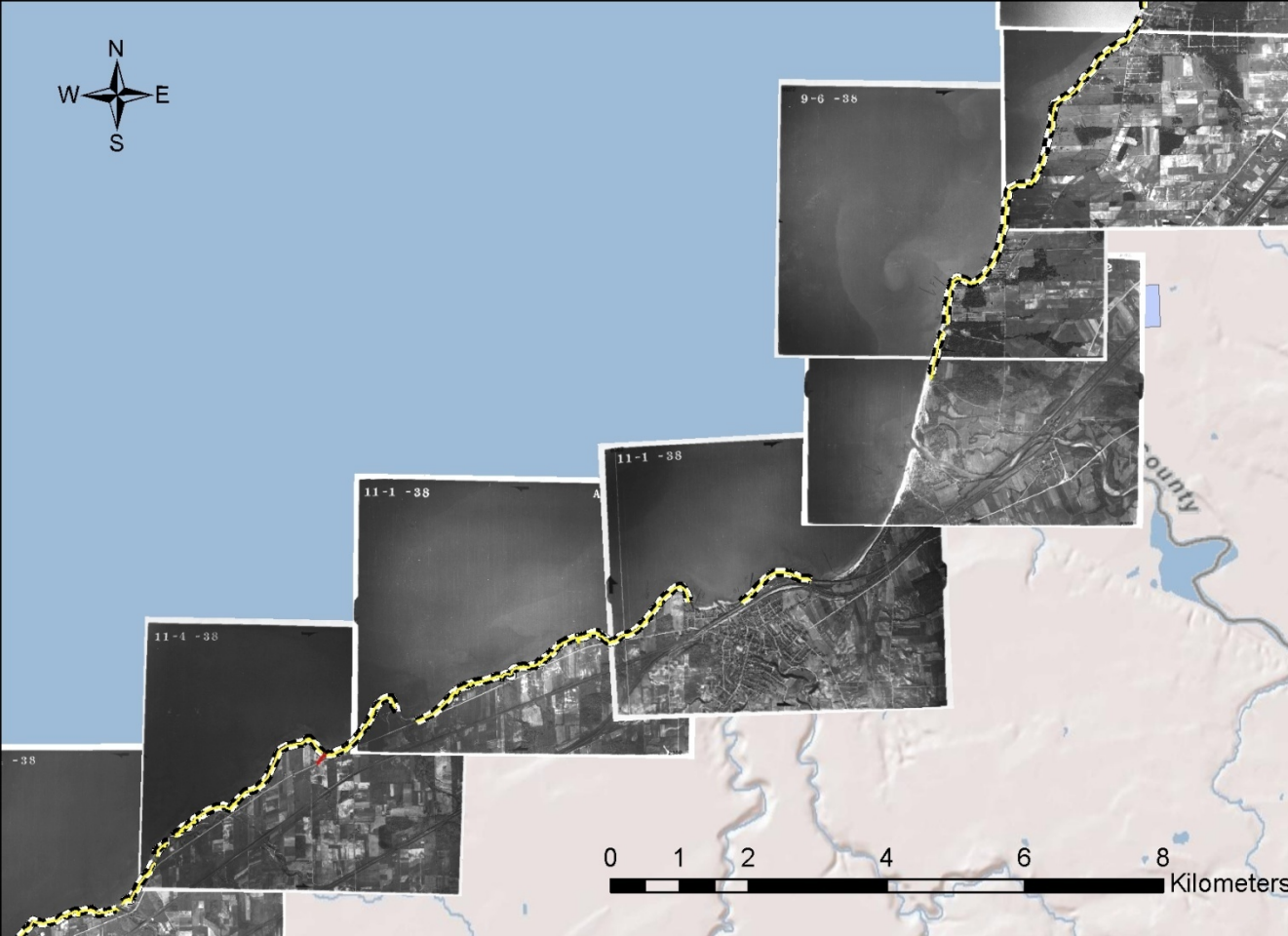


Georeferencing based on matching old with contemporary roads, buildings in 2006, 2008 photography



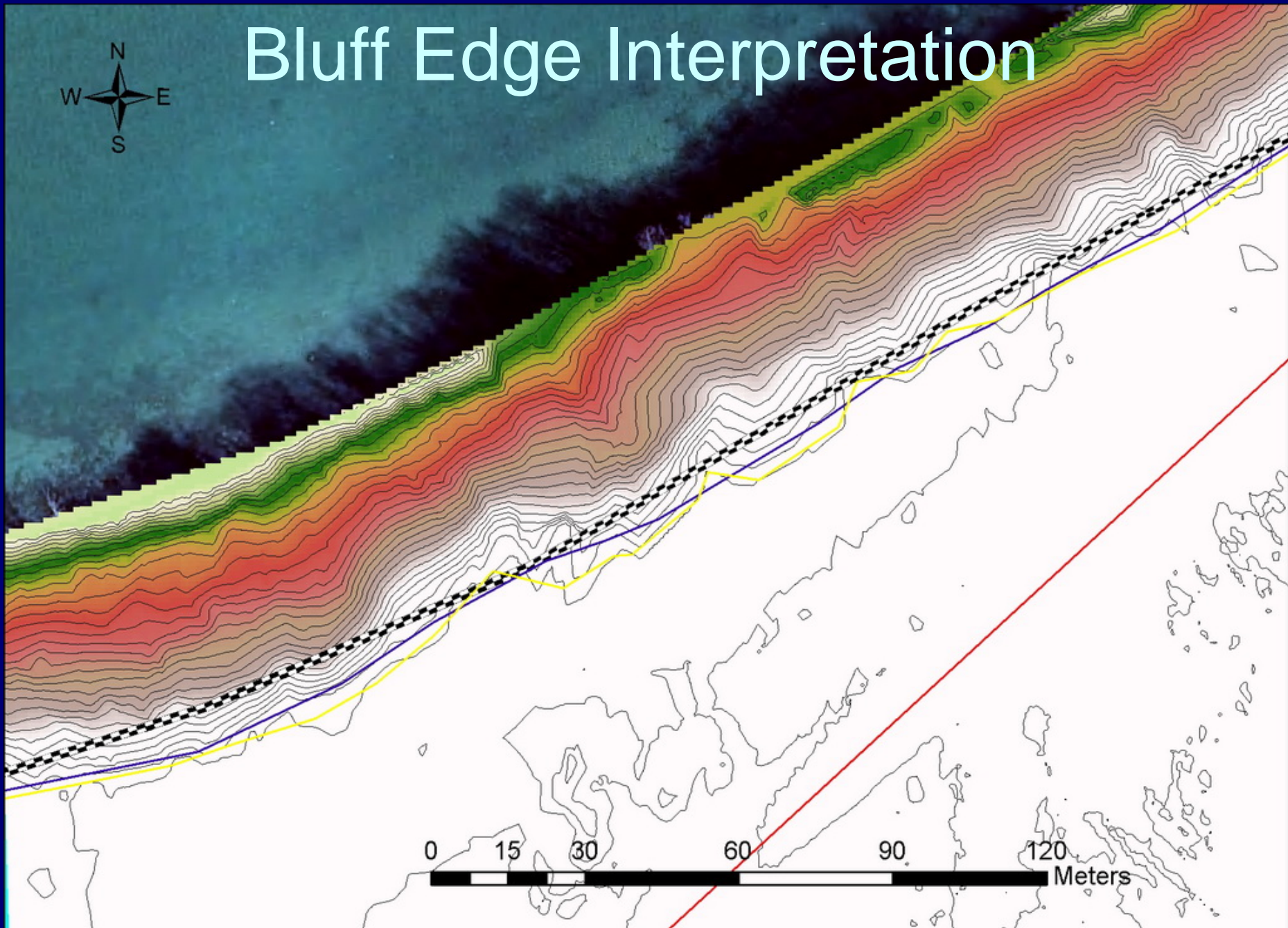
1938 Agricultural
Adjustment
Administration

1978 USACE
archives

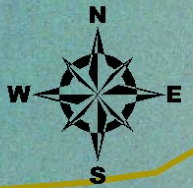


Historical
Photography

Bluff Edge Interpretation



Bluff Retreat



1875 bluff

1938 bluff

257

1978

2006

Legend

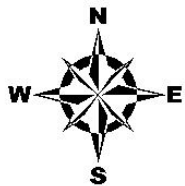
- 1875_low_shoreline_1879_Chart3_spline
- 1875_bluff_line_1879_Chart3_spline
- PA 1938_bluff_line USGS
- 1978_bluff_line
- PA 2006_bluff_line USGS



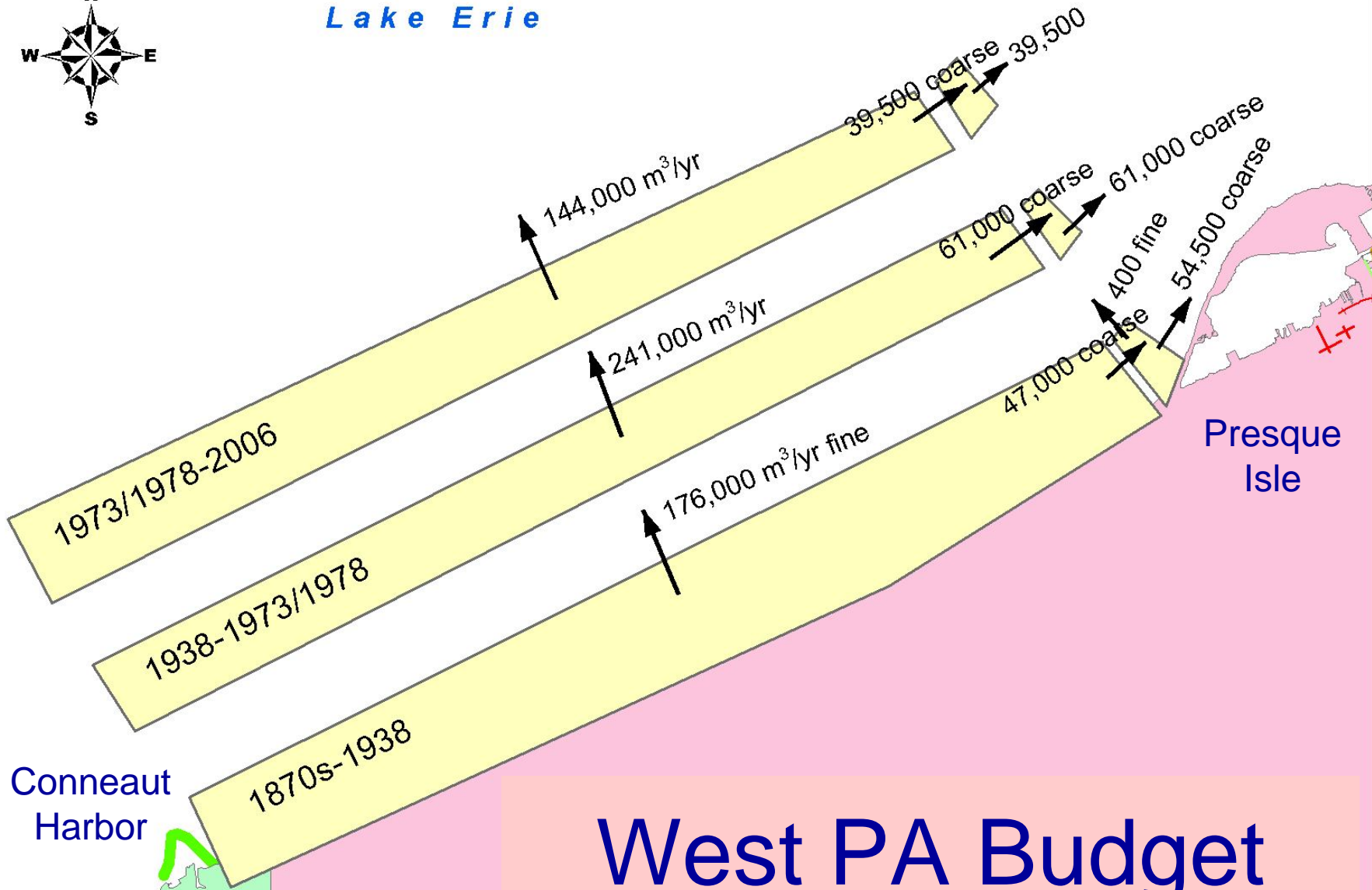
Bluff Retreat Rates

1. Create baseline
2. Set up transects at 50-m intervals using USGS DSAS software
3. Compute retreat (no bluff advance possible)
4. Average for 1-km reaches
5. Enter 1-km values in master spreadsheet





Lake Erie



Conneaut Harbor

Presque Isle

Ohio

West PA Budget



Future Work



- R&D on shale/siltstone contribution to budget
- Journal publications
- Dev. online interactive display tool
- Apply findings to variety of section 204 beneficial use projects for ecosystem restoration
- Model projected climate change effects on ice cover, water levels, storminess, sediment transport
- Need to develop an approach to risk-based principles on a regional scale to inform project decision-making.
- Improve efficiency from using systems approach to managing multiple projects in the Lake

A photograph of a large, white-capped wave crashing over a dark, rocky coastline under a dark sky. The text "Geology is fun! Questions?" is overlaid in yellow.

Geology is fun!
Questions?