

SRI International (Sarnoff)
(Sensei) Technical Report: Distribution A

**SRI's Approach to Multimodal Sensing of Stress for Stress Resiliency
Training**

(December 1-31, 2012)

From:

Ajay Divakaran, Technical Leader
Jeffrey Lubin, Senior Research Scientist
Joe Ferraro, Program Manager

Sensei (SRI #P21103)
Contract # N00014-12-C-0288

Spending for Period 12

**1 Update: Technical Progress and Accomplishments for Period 12
(December 2012):**

**Task 3.1: Capture Behavioral Stress Markers in Real-Time in Lab Environment
with graded exposure to ICT's scenarios** **MAC 1-6**

During this reporting period, we refined the magnitude estimation approach in the facial response measurement software and implemented a median filter based technique for establishing the neutral face in extended live recordings of spontaneous reactions. We now describe each of these in more detail.

Magnitude Estimation

As reported during the last contract period, for classification, the reference vector with the smallest angular difference from the test vector is returned, while for magnitude estimation, the length of the test vector is returned. During this period, an additional magnitude measure of interest was implemented: the length of the test vector as projected onto each of the reference vectors; i.e. by multiplying the test vector length by the cosine of angular difference between test and reference. Intuitively, this measure reports the estimated magnitude of each of the classified expressions.

Figure 1 shows a typical result within the industry standard Cohn-Kanade database (Lucey et al, 2010) in which the projected magnitude onto each of the reference vectors is plotted as a function of frame number. Figure 2 shows a full confusion matrix for this database, in which classification based on highest projected magnitude is shown against ground truth.

Report Documentation Page

Form Approved
OMB No. 0704-0188

Public reporting burden for the collection of information is estimated to average 1 hour per response, including the time for reviewing instructions, searching existing data sources, gathering and maintaining the data needed, and completing and reviewing the collection of information. Send comments regarding this burden estimate or any other aspect of this collection of information, including suggestions for reducing this burden, to Washington Headquarters Services, Directorate for Information Operations and Reports, 1215 Jefferson Davis Highway, Suite 1204, Arlington VA 22202-4302. Respondents should be aware that notwithstanding any other provision of law, no person shall be subject to a penalty for failing to comply with a collection of information if it does not display a currently valid OMB control number.

| | | | | | |
|--|------------------------------------|-------------------------------------|----------------------------|---|---------------------------------|
| 1. REPORT DATE JAN 2012 | | 2. REPORT TYPE | | 3. DATES COVERED 00-12-2012 to 00-12-2012 | |
| 4. TITLE AND SUBTITLE SRI Approach to Multimodal Sensing of Stress for Stress Resiliency Training | | | | 5a. CONTRACT NUMBER | |
| | | | | 5b. GRANT NUMBER | |
| | | | | 5c. PROGRAM ELEMENT NUMBER | |
| 6. AUTHOR(S) | | | | 5d. PROJECT NUMBER | |
| | | | | 5e. TASK NUMBER | |
| | | | | 5f. WORK UNIT NUMBER | |
| 7. PERFORMING ORGANIZATION NAME(S) AND ADDRESS(ES) SRI International (Sarnoff),201 Washington Road ,Princeton,NJ,08540 | | | | 8. PERFORMING ORGANIZATION REPORT NUMBER | |
| 9. SPONSORING/MONITORING AGENCY NAME(S) AND ADDRESS(ES) | | | | 10. SPONSOR/MONITOR'S ACRONYM(S) | |
| | | | | 11. SPONSOR/MONITOR'S REPORT NUMBER(S) | |
| 12. DISTRIBUTION/AVAILABILITY STATEMENT Approved for public release; distribution unlimited | | | | | |
| 13. SUPPLEMENTARY NOTES | | | | | |
| 14. ABSTRACT | | | | | |
| 15. SUBJECT TERMS | | | | | |
| 16. SECURITY CLASSIFICATION OF: | | | 17. LIMITATION OF ABSTRACT | 18. NUMBER OF PAGES | 19a. NAME OF RESPONSIBLE PERSON |
| a. REPORT unclassified | b. ABSTRACT unclassified | c. THIS PAGE unclassified | | | |

SRI International (Sarnoff) (Sensei) Technical Report: Distribution A

During the next reporting period, we will be using this algorithm to estimate these projected magnitudes on our own data captured last period, and we will then use these magnitudes in developing the facial response measure based stress predictor.

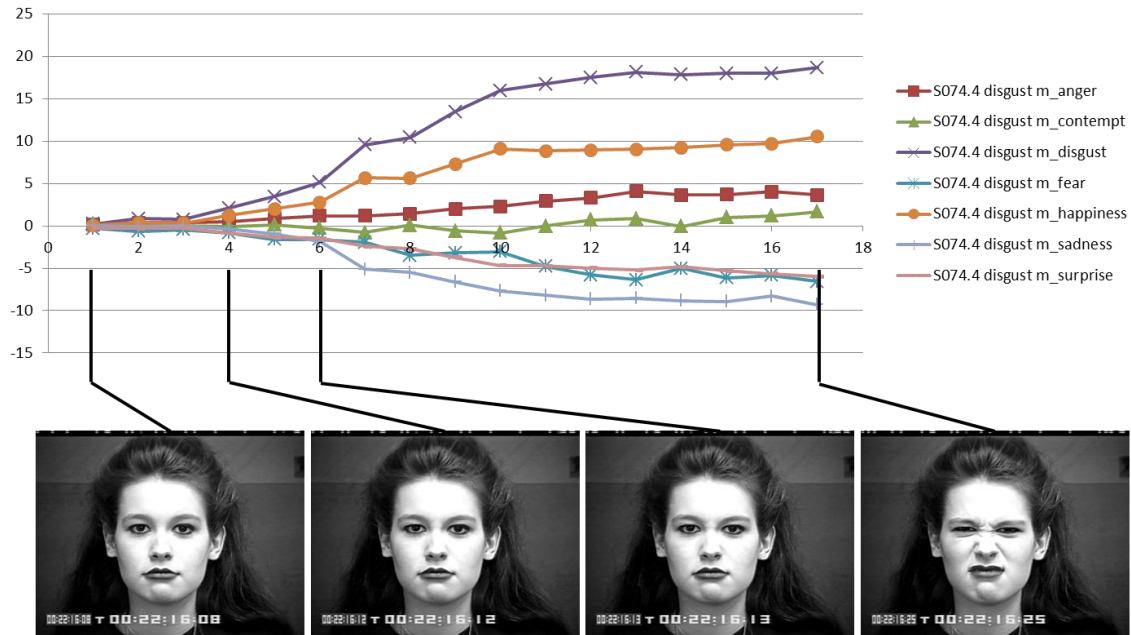


Figure 1. Typical results of vector analysis classification and magnitude estimation approach on Cohn-Kanade database, showing projected magnitude for each expression as a function of frame number. In the legend, first expression name indicates ground truth, second indicates reference vector under comparison.

| | | Ground truth | | | | | | |
|-------------------|-----------|--------------|-----------|-----------|-----------|-----------|-----------|-----------|
| | | anger | contempt | disgust | fear | happiness | sadness | surprise |
| Vector Classifier | anger | 26 | 3 | 2 | 1 | 0 | 3 | 0 |
| | contempt | 3 | 13 | 0 | 0 | 0 | 1 | 3 |
| | disgust | 5 | 0 | 51 | 0 | 1 | 0 | 0 |
| | fear | 0 | 0 | 0 | 20 | 0 | 2 | 4 |
| | happiness | 0 | 1 | 1 | 2 | 65 | 3 | 0 |
| | sadness | 6 | 0 | 0 | 0 | 0 | 16 | 1 |
| | surprise | 2 | 1 | 0 | 1 | 0 | 1 | 70 |

Figure 2. Confusion matrix showing classification results of vector analysis approach against ground truth in Cohn-Kanade database

SRI International (Sarnoff)
(Sensei) Technical Report: Distribution A

Neutral Face Estimation

The facial response analysis algorithm requires an estimate of a neutral face, from which deviations of feature point locations are used in classifying and estimating response magnitudes. For the results shown in Figure 1 and 2 above, a simple approach of basing the neutral face on the first frame in each sequence was used and is appropriate, since these posed data were collected with a neutral start imposed as a constraint.

However, for naturalistic data analysis, it is important to have a robust neutral face estimate that is not overly sensitive to starting conditions. For this purpose, we have implemented an approach that continually tracks the median response of each feature over time, and uses this median as the current estimate of neutral. This approach works well for spontaneous response analysis, which tends to be bursty and hence deviates only occasionally from the median value, which therefore itself remains constant over time.

Task 3.2: Administer Scenarios and Verify Hypothesis **MAC 6-12**

Not yet at this stage.

Task 3.3: Program Management **MAC 1-12**

2. Issues:

- No current issues.

END OF FILE