



***Air Force Operational Medicine:
Using the Enterprise Estimating Supplies
Program to Develop Materiel Solutions for the
Medical Urology Team (FFPPT)***

*Ralph Nix
Curtis Hopkins
Vern Wing*



Naval Health Research Center

Document No. 11-2B

The views expressed in this article are those of the authors and do not necessarily reflect the official policy or position of the Department of the Navy, Department of Defense, nor the U.S. Government. Approved for public release; distribution is unlimited.

*Naval Health Research Center
140 Sylvester Rd.
San Diego, California 92106-3521*

**Air Force Operational Medicine: Using the Enterprise Estimating Supplies Program to
Develop Materiel Solutions for the Medical Urology Team (FFPPT)**



U.S. AIR FORCE

Ralph Nix
Curt Hopkins
Vern Wing

Naval Health Research Center
140 Sylvester Rd.
San Diego, CA 92106-3521



Report No. 11-2B, supported by the U.S. Air Force Medical Logistics Agency, under Work Unit No 60334. The views expressed in this article are those of the authors and do not reflect the official policy or position of the Navy, Department of Defense, or the U.S. Government. Approved for public release; distribution is unlimited. This research has been conducted in compliance with all applicable federal regulations governing the protection of human subjects. No human subjects were directly involved in this research.

Executive Summary

The Naval Health Research Center (NHRC) has used its modeling and simulation (M&S) expertise to develop and update conventional U.S. Air Force medical assets since 2004. Air Force medical modeling capabilities currently capture care and treatment of the sick and injured from the first responder through theater hospitalization.

The objective of this study was to leverage medical M&S advantages to provide recommendations for allowance standard (AS) configurations based on the Air Force Medical Urology Team (FFPPT) operational and clinical requirements. NHRC analysts reviewed the FFPPT, analyzed clinical requirements with subject matter experts, and used M&S tools to develop the operationally based and patient-driven recommended 917H line list.

The Unit Type Code (UTC) capabilities, operational requirements, and materiel solutions were identified, addressing issues of modernization, clinical requirement, standardization, and redundancy. In this study, the overarching rationale for change was redundancy. Total changes resulted in a reduction in weight by 49.9%, cube by 42%, and cost by 16% per set.

Modeling a medical system like the FFPPT, with a range of capabilities, validates the materiel solutions for each UTC. It is effective in facilitating AS reviews that focus on advancing the mission, operational requirements, and capabilities of these agile, deployable medical resources.

Table of Contents

Introduction..... 4

Method 4

 Subject Matter Expert Guidance..... 5

 Patient Stream 5

 Expeditionary Medical Knowledge Warehouse 6

 Capability 7

Results..... 7

 Change Justification..... 7

 Quantity Changes..... 7

Conclusion 8

References..... 10

Appendix A. Medical Urology Team Allowance Standard Recommended Configuration..... A-1

Introduction

The Naval Health Research Center (NHRC) has used its modeling and simulation (M&S) expertise to develop and update U.S. Air Force medical capabilities, allowance standards (ASs), and surgical subspecialty Unit Type Codes (UTCs) since 2004. Air Force medical units must remain small, light, and flexible. Based on the success of previous work, the Air Force asked NHRC to conduct a study of the Medical Urology Team (FFPPT) (Konoske, 2009).

The Air Force Medical Services are faced with a wide range of potential scenarios, from providing warfighters forward resuscitative care to assisting civilian populations during humanitarian relief operations. Air Force planners and UTC developers have closely followed the *Joint Vision 2010* concept of providing highly mobile medical resources with a minimal logistic footprint, without compromising capability (Office of the Joint Chiefs of Staff, 1998). Additionally, guidance provided by the *Joint Vision 2020* calls for a more scientific approach that leverages and enhances existing information technologies to support modern operational capabilities (Office of the Joint Chiefs of Staff, 2000). Emphasis on mobility and capability resulted in a modular approach to prepare, plan, and deploy the FFPPT expeditionary medical platform known.

Method

The NHRC method of modeling medical supply requirements was developed to establish and/or review medical inventories for various levels of care. The aim is to give clinicians in the field the needed materiel to provide the best care possible, while still maintaining as small a logistical footprint as possible. This is accomplished through a process that begins with the identification of likely patient types to be encountered by a particular type of medical treatment asset, including combat wounds, non-battle injuries, and illnesses. *International Classification of Diseases, Ninth Revision (ICD-9)* coded patient conditions, selected by the Defense Medical Materiel Program Office, are used for this purpose. In this study the Enterprise Estimating Supplies Program (EESP) was the only application used to generate estimates of the initial supplies and equipment needed for this scenario. Figure 1 illustrates the NHRC processes used when developing a typical M&S package.

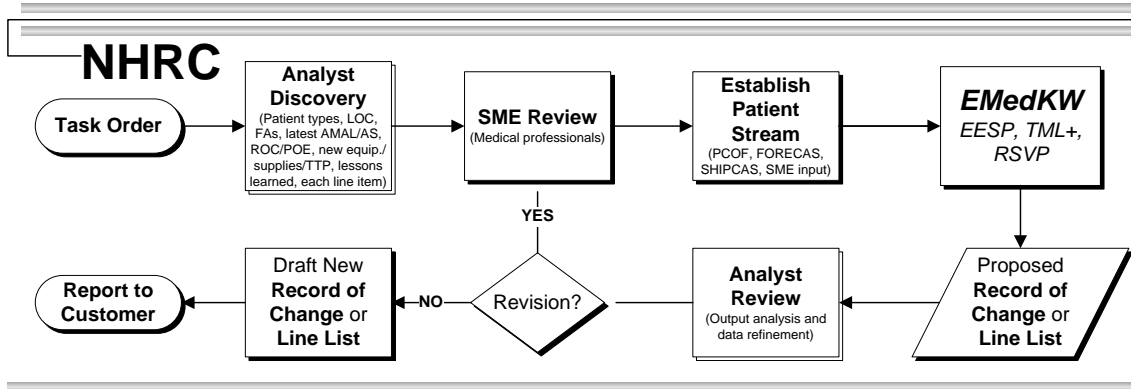


Figure 1. An example of the NHRC AS review process.

Subject Matter Expert Guidance

A subject matter expert (SME) AS review was performed on February 9, 2010 at Wright-Patterson Medical Center, in Dayton, Ohio. At this meeting, SMEs and NHRC analysts refined and validated assumptions regarding equipment and supply associations, and the range and scope of patient types.

Patient Stream

To determine the initial supply and equipment requirements, NHRC analysts developed a scenario depicting the range and types of patients that will be seen and treated at a deployed military treatment facility. The Patient Condition Occurrence and Frequency (PCOF) tool was used to provide a patient stream that is comprehensive for both the range of patient types and the frequency in which they present. The scenario was determined to be representative for this study. Using a Poisson process and the rates provided by the PCOF tool, the patient stream was developed to realistically emulate the medical demands consistent with the chosen scenario.

Using the resulting above patient stream, the medical supplies for this study were generated using the EESP, with an average throughput of 25 patients over a 30-day period. The scenario is shown in Table 1.

Table 1
FFPPT Patient Scenario

ICD-9	ICD-9 description	No. patients
584.9	ACUTE RENAL FAILURE NOS	1
592.9	URINARY CALCULUS NOS	4
595.9	CYSTITIS NOS	2
601.9	PROSTATITIS NOS	2
808.8	PELVIC FRACTURE NOS-CLOSED	1
867.1	BLADDER/URETHRA INJ-OPEN	2

867.8	PELVIC ORGAN INJ NOS-CLOSED	1
922.4	CONTUSION GENITAL ORGANS	1
550.0	UNILATERAL INGUINAL HERNIA W GANGRENE	2
550.90	UNILATERAL INGUINAL HERNIA	2
590.80	PYELONEPHRITIS NOS	1
604.90	ORCHITIS/EPIDIDYMITIS NOS	2
608.20	TORSION OF TESTIS NOS	2
865.10	SPLEEN INJURY NOS-OPEN	1
866.10	KIDNEY INJURY NOS-OPEN	1
	Total	25

Expeditionary Medical Knowledge Warehouse

The patient stream is input to the Expeditionary Medical Knowledge Warehouse (EMedKW) program to perform M&S. EMedKW is composed of EESP, the Tactical Medical Logistics (TML+) planning tool, and the ReSupply Validation Program (RSVP). EMedKW is a service-oriented architecture system designed to protect and organize medical data. EMedKW provides the ability to estimate the equipment and consumable items needed to treat a particular patient distribution, while also tracking inventory to monitor mission readiness. Within EMedKW, the tasks required to treat each PC code are identified and matched with the required equipment and consumable items. Review of the output informs the 917H line list for the Air Combat Command Manpower and Equipment Force Packaging System review.

The following example describes the EMedKW data structure (see Figure 2). The task profile shows the likely clinical tasks to be performed on this type of patient in that functional area, and the percentage of those patients expected to receive them. The “Equipment/supplies” column identifies the items needed to complete the “Insert endo-trach tube” task at that level of capability. Not shown in this figure are additional data fields used to calculate supply quantities, including the amount of each supply needed to complete the task, how often the task will be repeated in the first 24 hours of treatment, how often the task will be repeated in each subsequent 24-hour period, and the average length of stay at that facility.

ICD-9 code	Medical capability	Functional area	Task profile	Patients %	Equipment/supplies
800.13	Emergency forward care	Triage/pre-op	Triage	100	Laryngoscope INF/ADL w/ 4 detachable blades Tube trach endotrach double lumen left 39 Fr Forceps trach McGill fenestrated Lubricant surgical 5 gram 144S Vecuronium bromide inj 10mg/ml 10ml vial Basin emesis plastic disp., 250S Gloves patient exam large 100s Syringe hypodermic 3ml Luer Lock 100s Needle hypodermic 20ga 1.43-1.56 Luer Lock, 100S Pad isopropyl impregnated, 200S
800.26		O.R.	Patient assessment	30	
800.42	Forward resuscitative care	Ward/ICU	Insert endo-trach tube	100	
800.60		Theater	Neuro checks	60	
801.01	hospitalization	Lab	Apply c-collar	20	
850.1		Pharmacy	Set-up O2	20	
850.9	Definitive care		Admin O2	100	
-			Cardiac monitoring	80	
-			CPR	100	
870.4			Emergency control hemorrhage		

Figure 2. An example of NHRC’s programmatic modeling process using ICD-9 code 800.13.

Capability

The FFPPT provides resources to establish and support a urology surgical capability. This includes treatment of genitourinary trauma, and acute and routine genitourinary problems in a theater hospital or a deployed medical treatment facility. Clinical capabilities include acute surgical interventions for trauma to the kidneys, bladder, urethra, and genitalia; acute intervention for stone disease and infection; and diagnostic evaluation and routine urologic care, as warranted. This service provides 24-hour coverage over 12-hour shifts, for 30 days. Staffing this capability requires an Advanced Life Support-qualified urologist and one Basic Life Support-qualified urology technician.

Results

Change Justification

M&S provides visibility into change justifications. Justifications typically fall into one of four categories; modernization, clinical requirement, standardization, and redundancy. In this study, modernization was not a contributing factor for change. One item, 30 x 30 heavy duty wrapper sterilization, was deleted from the stock table and not replaced. The removal is justified because there are ample sterilization wrappers in the EMEDS +10 standard that are included in the model. A total of 132 items found in the Urology AS are direct NSN matches to line items found in the EMEDS +10—87 equipment items, 32 consumables, 10 medications, and 3 durables—and are all recommended for deletion.

Quantity Changes

There are quantity changes in some remaining line items that are recommended based on demand from the scenario. A notable consumable decrease is found in the stents. There

were five different stent configurations in the current AS, totaling 58 stents; however, the patient stream only called for 20. Modest decreases are recommended in the range of urethral catheters. There are also areas where increases are recommended, including two suture types. Table 2 provides a weight, cube, and cost analysis of the recommended AS changes. A detailed line list of the recommended changes can be found in Appendix A.

Table 2
FFPPT Weight, Cube, and Cost

Category	Weight (lbs)	Cube (cu ft)	Cost
AS equipment	2430.00	459.11	\$555,905.49
EESP equipment	1770.58	366.79	\$476,385.41
Difference	-659.42	-92.31	-\$79,520.08
Percent change	-27.14	-20.11	-14.30
AS medication	951.00	47.67	\$12,930.38
EESP medication	32.47	7.42	\$1,941.34
Difference	-918.53	-20.64	\$5,076.08
Percent change	-96.59	-81.04	15.08
AS consumable	1227.34	303.15	\$71,710.25
EESP consumable	508.88	95.13	\$53,770.66
Difference	-718.46	-208.03	-\$17,939.59
Percent change	-58.54	-68.62	-25.02
AS durable	20.50	1.77	\$5,939.00
EESP durable	4.65	0.75	\$8,780.58
Difference	-15.85	-1.02	\$2,841.58
Percent change	-77.32	-57.63	47.85
AS total	4628.84	811.70	\$646,485.12
EESP total	2316.59	470.09	\$540,877.99
Difference	-2312.25	-341.62	-\$105,607.13
Percent change	-49.95	-42.09	-16.34

Conclusion

An M&S study was conducted on the FFPPT. The clinical capabilities include acute surgical interventions for trauma to the kidneys, bladder, urethra, and genitalia; acute intervention for stone disease and infection; and diagnostic evaluation and routine urologic care, as warranted. This service provides 24-hour coverage over 12-hour shifts, for 30 days. A patient stream was developed that represents the type and frequency of patients likely to be seen at this level of care and functional area.

Modeling and simulation tools are essential for projecting appropriate medical care needs for our service personnel. Standardizing equipment and consumables with the Defense Medical Materiel Program Office-approved items makes the FFPPT creation and resupply quicker and more efficient. Updating and maintaining the patient data and FFPPT contents database will ensure that future medical needs are met in the most effective manner.

References

Konoske, P. (2009). *Statement of Work FY10: Using the Naval Health Research Center's Medical Planning Applications to Review or Validate Air Force Medical Requirements and Capabilities*. San Diego, CA: Naval Health Research Center.

Office of the Joint Chiefs of Staff. (1998). *Joint Vision 2010*. Washington, DC: Department of Defense.

Office of the Joint Chiefs of Staff. (2000). *Joint Vision 2020*. Washington, DC: Department of Defense.

Appendix A.
FFPPT AS Recommended Configuration

Status	NSN	Supply description	UI	AS qty	EESP qty	AS wt (lbs)	AS cube (cu ft)	AS cost	EESP wt (lbs)	EESP cube (cu ft)	EESP cost
Equipment											
A	6515014605809	ADAPTER CYSTO-TELESCOP USA SERIES ADAPTS USA ELITE SYS&AUTOCLAVE	EA	4	4	2.600	0.480	434.72	2.600	0.480	434.72
A	6515014605802	ADAPTER ELECTRODE ELECTROSURGICAL F/USE W/DAC AND ERBE UNITS	EA	4	4	2.200	0.480	753.48	2.200	0.480	753.48
A	6515014605799	ADAPTER ELECTRODE ELECTROSURGICAL F/USE W/DAC VALLEYLAB OR BOVIE	EA	4	4	1.120	0.440	573.80	1.120	0.440	573.80
D	6532009359765	APRON X-RAY PROTECTIVE COAT 38X24IN LT WT	EA	2	0	18.000	1.696	289.88	0.000	0.000	0.00
A	6515015548582	AUTOCOLLIMATOR VISUAL ALIGNMENT LASER MDL 50 F/6515015494221	EA	2	2	1.300	0.260	2,202.48	1.300	0.260	2,202.48
D	6515013464816	BAR HORIZONTAL RETRACTOR BOOKWALTER	EA	4	0	16.000	1.200	5,231.04	0.000	0.000	0.00
D	6530007709220	BASIN EMESIS STEEL KIDNEY SHAPE 500ML	EA	2	0	1.700	0.064	28.48	0.000	0.000	0.00
D	6530007710225	BASIN WASH CORROSION RESISTING STEEL 9QT 6S	PG	4	0	11.360	0.824	910.80	0.000	0.000	0.00
D	6530014212968	BASKET STERILIZATION RIGID CRES MID SIZE 17X1	EA	5	0	10.000	0.125	531.40	0.000	0.000	0.00
A	6530014212238	BASKET STERILIZATION SURG INSTR 21X11X4IN	EA	8	8	16.000	0.200	830.40	16.000	0.200	830.40

Note. A = quantity unchanged; B = quantity increase; C = quantity decrease; D = delete; E = add, deleted replacement item; F = add new item

Status	NSN	Supply description	UI	AS qty	EESP qty	AS wt (lbs)	AS cube (cu ft)	AS cost	EESP wt (lbs)	EESP cube (cu ft)	EESP cost
D	6515013469207	BLADE RETRACTOR ABDOM 6X2IN MALLEABLE RATCH	EA	2	0	1.000	0.600	1,167.00	0.000	0.000	0.00
D	6515013464838	BLADE RETRACTOR ABDOMIN 3X2IN BALFOUR RATCHE	EA	1	0	0.420	0.200	394.65	0.000	0.000	0.00
D	6515013464839	BLADE RETRACTOR ABDOMINAL 6X3IN RATCHET NOTCH	EA	2	0	1.000	1.000	750.00	0.000	0.000	0.00
D	6515012448128	BLADE RETRACTOR ABDOMINAL HARRINGTON 5X2IN	EA	1	0	0.490	0.200	1,682.16	0.000	0.000	0.00
D	6515012474977	BLADE RETRACTOR ABDOMINAL KELLY 3X2IN RATCHET	EA	3	0	1.500	0.600	1,183.95	0.000	0.000	0.00
D	6515012474978	BLADE RETRACTOR ABDOMINAL KELLY 4X2IN RATCHET	EA	3	0	2.250	0.600	1,867.50	0.000	0.000	0.00
D	6530004042654	BOWL SURG SPONGE PLAS 44 OZ 3X6.250" AUTOCLAVABLE 12S	EA	1	0	0.100	0.005	63.81	0.000	0.000	0.00
A	6530014606997	BRUSH CLEANING URETERSCOPE ITEM CANCELLED	EA	4	4	4.000	4.000	4.00	4.000	4.000	4.00
A	6515015548626	CALIPER DIGITAL LASER POSITION SET FOCUSING F/6515015494221 LASR	EA	2	2	1.320	0.260	434.70	1.320	0.260	434.70
D	6515003866600	CANNULA ABDOM POOLE 23FR 8.75IN FEN CURV HUB	EA	1	0	0.110	0.100	71.56	0.000	0.000	0.00
D	6515003866800	CANNULA BRAIN FRAZIER 8FR 7.5IN OPEN END TIP	EA	2	0	0.240	0.200	101.70	0.000	0.000	0.00
D	6515003867600	CANNULA LARYN ANGUL YANK 9IN 0.234-0.266IN	EA	1	0	0.190	0.100	36.38	0.000	0.000	0.00
A	6530014284264	CASE STERILIZATION FULL SIZE 23IN.LONG X 12IN.WIDE X 6	EA	8	8	10.000	0.800	8,346.24	10.000	0.800	8,346.24

Note. A = quantity unchanged; B = quantity increase; C = quantity decrease; D = delete; E = add, deleted replacement item; F = add new item

Status	NSN	Supply description	UI	AS qty	EESP qty	AS wt (lbs)	AS cube (cu ft)	AS cost	EESP wt (lbs)	EESP cube (cu ft)	EESP cost
		IN.DEEP									
D	6530014287085	CASE STERILIZATION RIGID MID-SIZE 19X12X6IN	EA	6	0	272.160	34.170	3,006.00	0.000	0.000	0.00
A	6515015168358	CATHETER,VISCERAL FR SZ 6 TIP CONF C2 65CM LG WIRE GUIDE DIA.038	EA	10	10	0.600	0.300	380.40	0.600	0.300	380.40
A	6515013854457	CATHETERIZATION KIT URETHRAL 6 COMP 18FR DILATOR 6FR CATH STER	EA	20	20	2.000	2.000	9,222.80	2.000	2.000	9,222.80
A	7105002698463	CHAIR FOLDING W/O ARMS STEEL GRAY ENAMEL	EA	4	4	20.000	4.000	51.64	20.000	4.000	51.64
A	6515011398906	CLAMP ARTERY COOLEY AORTA 10IN 73MM JAW 11/16IN JAW DP	EA	4	4	0.400	0.400	782.48	0.400	0.400	782.48
A	6515011399031	CLAMP ARTERY COOLEY BULLDOG 6.5CM 27MM JAW ADJ SCREW	EA	4	4	0.200	0.040	5.80	0.200	0.040	5.80
D	6515006903197	CLAMP ARTERY COOLEY DESIGN 7.5IN SHALLOW	EA	1	0	0.180	0.100	265.53	0.000	0.000	0.00
A	6515011656747	CLAMP ARTERY DEBAKEY 8.5CM SERRATED STRAIGHT 1IN JAW	EA	4	4	0.240	0.040	443.04	0.240	0.040	443.04
A	6515011665103	CLAMP ARTERY DEBAKEY 8.5CM CURV SERR 1IN JAW	EA	4	4	0.200	0.040	567.96	0.200	0.040	567.96
D	6515006903238	CLAMP ARTERY DEBAKEY ANGULAR & SERRATED 30MM	EA	2	0	0.620	0.200	455.38	0.000	0.000	0.00
A	6515006903194	CLAMP ARTERY DEBAKEY CURVED AND SERRATED 85MM	EA	4	4	2.880	0.568	581.40	2.880	0.568	581.40
D	6515006903196	CLAMP ARTERY DEBAKEY CURVED&SERRATED 105MM JA	EA	1	0	0.310	0.100	563.01	0.000	0.000	0.00

Note. A = quantity unchanged; B = quantity increase; C = quantity decrease; D = delete; E = add, deleted replacement item; F = add new item

Status	NSN	Supply description	UI	AS qty	EESP qty	AS wt (lbs)	AS cube (cu ft)	AS cost	EESP wt (lbs)	EESP cube (cu ft)	EESP cost
D	6515006903213	CLAMP ARTERY DEBAKEY DESIGN RATCH-PAWL 7IN	EA	2	0	0.200	0.400	371.80	0.000	0.000	0.00
A	6515008901681	CLAMP ARTERY GLOVER 6.5CM SERR STRT 27MM JAW	EA	4	4	0.240	0.040	226.56	0.240	0.040	226.56
A	6515008901682	CLAMP ARTERY GLOVER BULLDOG 6.5CM CURV	EA	4	4	0.240	0.028	587.40	0.240	0.028	587.40
D	6515011398191	CLAMP COARCTATION GLOVER DESIGN ANGULAR 22.5C	EA	2	0	0.200	0.200	520.92	0.000	0.000	0.00
D	6515011398168	CLAMP INTESTINAL ANASTOMOSIS BEST R ANG POINT	EA	1	0	0.310	0.800	247.95	0.000	0.000	0.00
A	6515012346809	CLAMP PENILE UROLOGICAL ZIPSER DESIGN STAINLESS	EA	8	8	5.440	0.240	205.76	5.440	0.240	205.76
A	6515011398907	CLAMP VASC PERIPHL COOLEY ANGULAR 6.50IN 90 DEG DBL ANG	EA	4	4	3.200	3.600	710.24	3.200	3.600	710.24
A	6515014614848	CLAMP VASECTOMY CRS FIXATION RING 3.5MM ID 5-1/2IN LG	EA	8	8	2.000	0.080	1,014.32	2.000	0.080	1,014.32
A	6515008901683	CLAMP VENA CAVA SATINSKY SERRATED RATCH	EA	6	6	3.840	0.564	1,070.34	3.840	0.564	1,070.34
A	7035NCM071333	COMPUTER LAPTOP CLIENT	EA	2	2	10.000	1.000	8,032.00	10.000	1.000	8,032.00
A	8340NCM060740	CONTAINER, STORAGE REUSAB	EA	8	8	40.000	40.000	1,928.00	40.000	40.000	1,928.00
A	6515014618194	CORD LIGHT CYSTOSCO FIBEROPTIC 4MM X 84" HIGH TRANSMISSION	EA	4	4	4.600	0.800	2,179.20	4.600	0.800	2,179.20
D	6515013464881	COUPLING POST RETRACTOR BOOKWALTER 1X1IN	EA	2	0	2.000	2.930	2,751.72	0.000	0.000	0.00

Note. A = quantity unchanged; B = quantity increase; C = quantity decrease; D = delete; E = add, deleted replacement item; F = add new item

Status	NSN	Supply description	UI	AS qty	EESP qty	AS wt (lbs)	AS cube (cu ft)	AS cost	EESP wt (lbs)	EESP cube (cu ft)	EESP cost
A	6530015505484	COVER PROTECTIVE HOSPITAL CART PLASTIC VINYL F/6530014606472	EA	2	2	1.400	0.220	7,030.54	1.400	0.220	7,030.54
A	6515015499242	CUP BIOPSY 3FR FLEXIBLE 115CM USED WITH FLEXIBLE URETERSCOPE	EA	4	4	2.200	0.480	2,081.36	2.200	0.480	2,081.36
D	6530007778600	CUP SOL CORROSION- RESISTING STEEL 7 OZ	EA	9	0	1.980	0.072	52.74	0.000	0.000	0.00
A	6515014630196	CYSTOSCOPE FLEXIBLE	EA	4	4	15.000	2.200	41,240.00	15.000	2.200	41,240.00
A	6515014995926	CYSTOURETHROSCOPE MASTER KIT USA ELITE SYSTEM	EA	4	4	43.560	7.200	89,438.08	43.560	7.200	89,438.08
A	7110015025826	DESK FIELD 21X30.750X28.5IN PTBL W/CHAIR	EA	2	2	180.000	20.000	1,376.00	180.000	20.000	1,376.00
A	6515015550149	DETECTOR HEAD LASER F/MAINTENANCE ON DORNIER LAZER	EA	2	2	3.200	0.420	3,651.48	3.200	0.420	3,651.48
A	6515013006513	DILATOR SET URETERAL AMPLATZ RENAL 90CM LG CATH 16CM SHEATH	EA	4	4	3.240	0.100	1,240.36	3.240	0.100	1,240.36
D	6515003279400	ELEVATOR PERIO SET RASPATORY DOYEN	SE	1	0	0.380	0.100	53.70	0.000	0.000	0.00
A	6515012410444	ELEVATOR PERIOSTEAL ALEXANDER-FARABEU ANGLED 12MM 8.5IN CURVE	EA	2	2	0.600	1.582	336.28	0.600	1.582	336.28
A	6515015498748	FIBER LASER 400 UM REUSABLE FOR LITHOTRIPTOR 6515015494221	EA	2	2	20.000	5.000	0.25	20.000	5.000	0.25
D	6515003333700	FORCEP DRESSING 10IN STRT&SERR RD TIP HEAVY	EA	1	0	0.250	0.100	11.64	0.000	0.000	0.00
D	6515003333600	FORCEP DRESSING 5.50IN STR&SERR JAW RND TIP	EA	3	0	0.300	0.300	43.38	0.000	0.000	0.00

Note. A = quantity unchanged; B = quantity increase; C = quantity decrease; D = delete; E = add, deleted replacement item; F = add new item

Status	NSN	Supply description	UI	AS qty	EESP qty	AS wt (lbs)	AS cube (cu ft)	AS cost	EESP wt (lbs)	EESP cube (cu ft)	EESP cost
D	6515003373900	FORCEP GAUZ PAD HOLD FOERSTER 9IN LOCK JOINT	EA	8	0	1.840	0.800	214.56	0.000	0.000	0.00
D	6515006878054	FORCEP HEMO 5.5IN CRILE CURVED JAW STR HDL	EA	16	0	2.400	1.600	594.08	0.000	0.000	0.00
D	6515000653181	FORCEP HEMO MIXTER HALF-CURV 6.87-7.375IN	EA	2	0	0.267	0.215	179.08	0.000	0.000	0.00
D	6515003349500	FORCEP HEMO PEAN SLIGHTLY CURVED JAW 9IN	EA	10	0	3.500	3.500	555.00	0.000	0.000	0.00
D	6515003347500	FORCEP HEMO ROCH-OCHS 1.875IN JAW 7.25IN SZ 2	EA	6	0	1.800	0.600	399.54	0.000	0.000	0.00
A	6515003381200	FORCEP TISSUE 10IN TWZ STRAIGHT & SMOOTH JAW	EA	8	8	0.800	0.112	196.88	0.800	0.112	196.88
D	6515003380300	FORCEP TISSUE ALLIS 6IN PIV STRT&SMOOTH JAW	EA	6	0	0.600	0.600	128.70	0.000	0.000	0.00
A	6515011474668	FORCEP TISSUE ALLIS 10INCH (25.4CM)	EA	8	8	0.800	0.040	371.60	0.800	0.040	371.60
D	6515006903209	FORCEP TISSUE DEBAKEY 9.5IN TWZR STR&SER JAW	EA	2	0	0.620	0.200	109.90	0.000	0.000	0.00
A	6515011398942	FORCEP TISSUE MAYO-RUSSIAN 9IN 6MM W FEN JAWS	EA	8	8	0.080	0.008	265.60	0.080	0.008	265.60
D	6515004426883	FORCEP TOWEL 5.25INDMND KNURL PATTERN NONPERF	EA	6	0	1.140	0.600	233.82	0.000	0.000	0.00
D	6515003204600	FORCEP TOWEL BACKHAUS 5.25IN PRG TOWEL CLAMP	EA	4	0	0.440	0.400	29.76	0.000	0.000	0.00
A	6515014851693	FORCEPS BIOPSY URETERAL ENDOSCOPIC CRS FLEX SHAFT THUMB RING HDL	EA	2	2	4.500	0.500	1,237.44	4.500	0.500	1,237.44
A	6515003333100	FORCEPS DRESSING CUSHING 7IN STR & SERR	EA	4	4	0.280	0.016	154.52	0.280	0.016	154.52

Note. A = quantity unchanged; B = quantity increase; C = quantity decrease; D = delete; E = add, deleted replacement item; F = add new item

Status	NSN	Supply description	UI	AS qty	EESP qty	AS wt (lbs)	AS cube (cu ft)	AS cost	EESP wt (lbs)	EESP cube (cu ft)	EESP cost
A	6515012434539	FORCEPS DRESSING GERALD ST 7IN TIP WIDTH 1.1MM U/THUMB	EA	4	4	2.800	0.028	70.32	2.800	0.028	70.32
A	6515015528190	FORCEPS GRASPING URETHEROSCOPE FLEXIBLE RAT TOOTH 3FR 115CM	EA	4	4	2.600	0.480	4,704.72	2.600	0.480	4,704.72
D	6515003344900	FORCEPS HEMO HALSTED 4.75-5.25IN CRVD SER	EA	20	0	2.000	1.000	157.20	0.000	0.000	0.00
D	6515003343800	FORCEPS HEMO KELLY 5.25-5.75IN SLIGHT CURV	EA	3	0	0.450	0.300	81.69	0.000	0.000	0.00
A	6515011397885	FORCEPS HEMO LIGACLIP 10.5IN 15DEG ANGLE	EA	4	4	0.800	0.040	377.88	0.800	0.040	377.88
D	6515003344300	FORCEPS HEMO ROCH-PEAN 6-6.50IN1.875QTR-CRV	EA	1	0	0.110	0.100	9.59	0.000	0.000	0.00
A	6515011676673	FORCEPS HEMOSTAT CLIP APPLYING MED ANGLE 45 DEG 10.50IN	EA	4	4	1.000	0.040	377.88	1.000	0.040	377.88
A	6515011676670	FORCEPS HEMOSTAT CLIP APPLYING SMALL ANGLED 15 DEG 7.50IN	EA	4	4	1.240	0.080	377.88	1.240	0.080	377.88
A	6515011676675	FORCEPS HEMOSTATIC CLIP APPLYING ANGLE 45 DEG 10.50IN	EA	4	4	0.800	0.040	384.32	0.800	0.040	384.32
A	6515011676674	FORCEPS HEMOSTATIC CLIP APPLYING MED ANGLE 15 DEG 10.50IN	EA	4	4	1.200	0.044	377.88	1.200	0.044	377.88
A	6515015092040	FORCEPS HEMOSTATIC LIGACLIP SZ MED LIGATING APPLIER	EA	4	4	8.000	0.400	381.68	8.000	0.400	381.68
D	6515003352900	FORCEPS INTESTINAL BABCOCK 8IN STRAIGHT	EA	4	0	0.720	0.400	60.00	0.000	0.000	0.00
D	6515003351900	FORCEPS INTESTINAL DOYEN 8.75IN BOX LOC	EA	2	0	0.600	0.200	426.16	0.000	0.000	0.00

Note. A = quantity unchanged; B = quantity increase; C = quantity decrease; D = delete; E = add, deleted replacement item; F = add new item

Status	NSN	Supply description	UI	AS qty	EESP qty	AS wt (lbs)	AS cube (cu ft)	AS cost	EESP wt (lbs)	EESP cube (cu ft)	EESP cost
A	6515003353200	FORCEPS INTESTINAL DOYEN STRT 8.75-9.25IN BOX LOCK	EA	4	4	0.720	0.040	783.68	0.720	0.040	783.68
A	6515011398204	FORCEPS KIDNEY PEDICLE 24.1CM RATCH-PAWL LOCK & NON-DET HDL	EA	2	2	0.400	0.200	653.12	0.400	0.200	653.12
D	6515003355800	FORCEPS KIDNEY PEDICLE GUYON-PEAN 9.5IN	EA	2	0	1.680	0.200	489.06	0.000	0.000	0.00
A	6515003355900	FORCEPS KIDNEY STONE REMOV RANDELL FULL CRV	EA	8	8	1.600	0.160	309.12	1.600	0.160	309.12
A	6515015001277	FORCEPS KIDNEY STONE REMOVING RANDELL CRS CURVED 190MM 7.5" LG	EA	2	2	0.760	0.240	738.44	0.760	0.240	738.44
A	6515015001275	FORCEPS KIDNEY STONE REMOVING RANDELL CRS HEAVILY CURVED 7.5" LG	EA	2	2	0.760	0.220	959.88	0.760	0.220	959.88
A	6515011667761	FORCEPS SET CLAMP APPLYING INTEST 6.25IN STONE	EA	2	2	0.580	0.060	541.82	0.580	0.060	541.82
D	6515011398939	FORCEPS THORACIC 11IN LG ANGULAR SOFT JAW	EA	5	0	1.600	1.000	1,161.45	0.000	0.000	0.00
D	6515011398938	FORCEPS THORACIC 9IN	EA	5	0	1.000	1.250	449.80	0.000	0.000	0.00
A	6515014669046	FORCEPS THORACIC GEMINI CRS CURVED MIXTER DELICATE	EA	8	8	9.200	1.200	530.80	9.200	1.200	530.80
D	6515006903208	FORCEPS TISS DEBAK 7.75IN TWEEZER STR&SER JAW	EA	2	0	0.380	0.200	89.10	0.000	0.000	0.00
D	6515003379900	FORCEPS TISSUE 5.5IN TWEEZER STR & SMOOTH	EA	5	0	0.500	0.500	81.40	0.000	0.000	0.00
D	6515003377800	FORCEPS TISSUE ADS4.50INTWEEZ STRT & SMTH JAW	EA	4	0	0.800	0.400	313.32	0.000	0.000	0.00

Note. A = quantity unchanged; B = quantity increase; C = quantity decrease; D = delete; E = add, deleted replacement item; F = add new item

Status	NSN	Supply description	UI	AS qty	EESP qty	AS wt (lbs)	AS cube (cu ft)	AS cost	EESP wt (lbs)	EESP cube (cu ft)	EESP cost
A	6515012125350	FORCEPS TISSUE BABCOCK CRS 9.5IN	EA	8	8	0.800	0.112	204.56	0.800	0.112	204.56
A	6515012466693	FORCEPS TISSUE BROWN-ADSON 123 MM PARALLEL MULTIPLE TEETH	EA	8	8	0.320	0.080	628.48	0.320	0.080	628.48
D	6515002998325	FORCEPS TISSUE RUSSIAN 5.75-6.25IN TWEEZER	EA	1	0	0.200	0.100	34.23	0.000	0.000	0.00
D	6515003204590	FORCEPS TOWEL BACKHAUS 4IN OPPOSED PRONGS	EA	1	0	0.130	0.100	12.27	0.000	0.000	0.00
A	8415NCM071509	GOGGLES, EYE PROTECTION L	EA	2	2	2.000	2.000	1,164.00	2.000	2.000	1,164.00
A	6515015548778	GUAGE MIRROR ADJUSTMENT SPACE TOOL U/W DORNIER LASER	EA	2	2	0.340	0.200	565.12	0.340	0.200	565.12
A	6515012392527	HANDLE SURG KNIFE DET BLADE NO.3 MET	EA	4	4	0.200	0.008	34.48	0.200	0.008	34.48
D	6515003447800	HANDLE SURGICAL KNIFE DET BLADE 3 NARROW NOSE	EA	1	0	0.100	0.109	5.52	0.000	0.000	0.00
D	6515003447880	HANDLE SURGICAL KNIFE DET BLADE 7 NARROW NOSE	EA	1	0	0.100	0.100	7.32	0.000	0.000	0.00
D	6515014983999	HEADLIGHTS SURG PORT SOLARC 8IN CORD HEADBAND	EA	2	0	1.180	1.000	7,724.76	0.000	0.000	0.00
A	6515014666139	HOLDER SURGICAL INSTRUMENT SS 12IN LG F/USE IN UROLOGY SPEC SET	EA	20	20	11.000	2.000	1,076.80	11.000	2.000	1,076.80
D	6515006903198	HOLDER SUTURE NDL DEBAKEY 7IN SERR	EA	1	0	0.200	0.100	76.71	0.000	0.000	0.00
D	6515006903200	HOLDER SUTURE NDL DEBAKEY 9IN SERR	EA	2	0	0.620	0.200	185.74	0.000	0.000	0.00

Note. A = quantity unchanged; B = quantity increase; C = quantity decrease; D = delete; E = add, deleted replacement item; F = add new item

Status	NSN	Supply description	UI	AS qty	EESP qty	AS wt (lbs)	AS cube (cu ft)	AS cost	EESP wt (lbs)	EESP cube (cu ft)	EESP cost
D	6515003417200	HOLDER SUTURE NEEDLE COLLIER 5IN STRT JAW	EA	2	0	0.200	0.200	97.70	0.000	0.000	0.00
D	6515009857024	HOLDER SUTURE NEEDLE HEANEY 8.25IN SERR	EA	1	0	0.140	0.456	40.17	0.000	0.000	0.00
D	6515011648884	HOLDER SUTURE NEEDLE HEGAR-MAYO 10IN F/GENER	EA	2	0	0.600	0.400	135.78	0.000	0.000	0.00
D	6515002998737	HOLDER SUTURE NEEDLE HEGAR-MAYO 7IN SER JAW	EA	4	0	0.880	0.040	154.20	0.000	0.000	0.00
A	6240014618181	LAMP XENON FIBER OPTIC 300 WATTS 115 VOLTS HIGH INTENSITY LIGHT	EA	2	2	0.500	0.020	13,658.28	0.500	0.020	13,658.28
A	6240014618193	LAMP XENON REPLACEMENT FOR 6240014618181 LIGHT SOURCE XENON	EA	2	2	0.220	0.160	2,738.62	0.220	0.160	2,738.62
A	7035NCM010065	LAPTOP SHIPPING/STORAGE CASE	EA	2	2	2.000	1.000	312.00	2.000	1.000	312.00
A	6515015494221	LITHOTRIPTOR MEDILAS HL20 HOLMIUM YAG 20W LASER SMALL SPOT SIZE	EA	2	2	200.000	2.450	106,125.52	200.000	2.450	106,125.52
A	6515015550329	METER ENERGY LASER USE W/DORNIER LASER MAINT 6515015494221	EA	2	2	4.000	1.200	3,100.86	4.000	1.200	3,100.86
A	6515014607448	MICROSURGERY SET VAVASO/VASOEPID	EA	2	2	1.100	0.240	13,095.34	1.100	0.240	13,095.34
A	6515015548024	MIRROR LITHOTRIPTOR 45-DEG ANGLE F/MAINT OF DORNIER LASER	EA	2	2	0.200	0.020	1,438.86	0.200	0.020	1,438.86
A	7125NCM041303	MOBILE SHELVING WIRE CHROME 18	EA	4	4	0.040	8.000	468.00	0.040	8.000	468.00
D	6515011656712	NEEDLE HEPARIN FLUSHING 18GA 2.50IN OLIVE T	EA	2	0	0.400	0.400	71.50	0.000	0.000	0.00

Note. A = quantity unchanged; B = quantity increase; C = quantity decrease; D = delete; E = add, deleted replacement item; F = add new item

Status	NSN	Supply description	UI	AS qty	EESP qty	AS wt (lbs)	AS cube (cu ft)	AS cost	EESP wt (lbs)	EESP cube (cu ft)	EESP cost
A	1670009962780	NET CARGO TIE DOWN 5.5FTX14.5	EA	4	4	80.000	20.000	568.00	80.000	20.000	568.00
A	1670009694103	NET CARGO TIE DOWN 96IN HT 10,000LB CAP	EA	2	2	40.000	10.000	284.00	40.000	10.000	284.00
A	6532014687651	PADS GEL BOOT STRAPS POLLYMER FOR SAM II	PR	2	2	2.300	0.300	598.92	2.300	0.300	598.92
A	1670008204896	PALLET CARGO AIRCRAFT 108INX88IN	EA	2	2	400.000	18.000	1,713.92	400.000	18.000	1,713.92
A	6515015553974	PLUG ENDOSCOPE FORCEPS IRRIGATION PLUG	EA	8	8	4.800	0.960	3,369.44	4.800	0.960	3,369.44
D	6515013464817	POST TABLE RETRACTOR BOOKWALTER 1IN	EA	2	0	16.000	8.246	8,373.96	0.000	0.000	0.00
A	6515011190017	PROBE GEN OPER 8IN SPATULATE HANDLE BULB TIP	EA	4	4	0.200	0.012	6.40	0.200	0.012	6.40
A	6515014607361	PUNCH CATHETER TIP FOLEY STER USED F/CUTTING.118IN DIAM RND HOLE	EA	2	2	1.100	0.240	304.90	1.100	0.240	304.90
D	6515012458987	RATCHET TILTING MECHANISM BOOKWALTER DESIGN	EA	3	0	1.020	0.600	7,697.88	0.000	0.000	0.00
D	6515012492755	RATCHET TILTING MECHANISM BOOKWALTER DSGN STD	EA	2	0	0.380	0.400	5,181.42	0.000	0.000	0.00
A	6515014630161	RESECTOSCOPE KIT MASTER 115V 60 HZ AC U/W 6545014850531	EA	2	2	7.100	0.440	26,255.50	7.100	0.440	26,255.50
D	6515012449949	RETRACTOR ABDOMIN KELLY LEFT W/2 2INX1.5IN BL	EA	3	0	3.000	0.600	1,867.50	0.000	0.000	0.00
D	6515003603510	RETRACTOR ABDOMINAL DEAVER 1.5X12IN	EA	1	0	0.690	0.100	23.19	0.000	0.000	0.00

Note. A = quantity unchanged; B = quantity increase; C = quantity decrease; D = delete; E = add, deleted replacement item; F = add new item

Status	NSN	Supply description	UI	AS qty	EESP qty	AS wt (lbs)	AS cube (cu ft)	AS cost	EESP wt (lbs)	EESP cube (cu ft)	EESP cost
A	6515012078259	RETRACTOR MASTOID WEITLANER 5.5IN	EA	8	8	3.200	0.192	350.00	3.200	0.192	350.00
D	6515003617250	RETRACTOR RIB FINOCCHIETO FENESTRATED MED	EA	1	0	2.000	0.259	879.74	0.000	0.000	0.00
D	6515011132623	RETRACTOR SENN-KANAVEL 3 PRONGS 6.75IN	EA	4	0	0.160	1.240	198.04	0.000	0.000	0.00
D	6515003603850	RETRACTOR SET ABDOMINAL RICHARDSON-EASTMAN 2S	SE	2	0	1.000	0.400	53.02	0.000	0.000	0.00
D	6515003609200	RETRACTOR SET GEN OPERAT DBL END 8.5&8.75IN	SE	1	0	0.300	0.100	41.51	0.000	0.000	0.00
D	6515003620200	RETRACTOR VEIN CUSHING DESIGN 8.5IN	EA	2	0	0.320	0.200	153.06	0.000	0.000	0.00
D	6515013464818	RING SEGMENTED OVAL BOOKWALTER 10.50X20IN	EA	1	0	3.000	0.500	4,588.49	0.000	0.000	0.00
D	6515011398115	RONGEUR SAUERBRUCH 30.5CM LG DBL ACTION 17MM	EA	1	0	2.000	0.100	343.50	0.000	0.000	0.00
A	8340NCM060739	ROPAK CONTAINER LID 40X48	EA	16	16	80.000	16.000	597.44	80.000	16.000	597.44
A	8340NCM020030	ROPAK CONTAINER TWO DROP DOORS 84	EA	8	8	200.000	120.000	1,960.00	200.000	120.000	1,960.00
D	6515009357138	SCISSOR BANDAGE ANGLED 7.25IN	EA	1	0	0.250	0.120	12.79	0.000	0.000	0.00
A	6515003640900	SCISSOR GEN SURG MAYO 5.50IN STR	EA	8	8	1.120	0.024	112.32	1.120	0.024	112.32
D	6515003640920	SCISSOR GEN SURG MAYO 7IN BLUNT 1.626IN CUT	EA	2	0	0.320	0.200	15.12	0.000	0.000	0.00
D	6515003640520	SCISSOR GEN SURG MAYO CRV BLADE 6.50-7IN BLNT	EA	3	0	0.300	0.300	24.48	0.000	0.000	0.00

Note. A = quantity unchanged; B = quantity increase; C = quantity decrease; D = delete; E = add, deleted replacement item; F = add new item

Status	NSN	Supply description	UI	AS qty	EESP qty	AS wt (lbs)	AS cube (cu ft)	AS cost	EESP wt (lbs)	EESP cube (cu ft)	EESP cost
D	6515010895668	SCISSOR GEN SURG METZENBAUM 11IN DELICATE	EA	2	0	0.480	0.200	292.92	0.000	0.000	0.00
D	6515010604280	SCISSOR GEN SURG METZENBAUM 5.75IN CRVD BL	EA	1	0	0.200	0.100	19.49	0.000	0.000	0.00
A	6515011151730	SCISSOR GEN SURGERY METZENBAUM DISSEC 9IN CRV	EA	4	4	0.760	0.040	208.64	0.760	0.040	208.64
A	6515003644600	SCISSOR IRIS CRVD BLADE 4IN SHARP POINTS	EA	8	8	0.560	0.024	89.52	0.560	0.024	89.52
A	6515012399806	SCISSOR TENOT POTTS 7IN CRVD BLADE	EA	8	8	0.480	0.016	898.72	0.480	0.016	898.72
D	6515003657100	SCISSOR TONSIL METZENBAUM 7IN CRV BLUNT PTS	EA	2	0	0.200	0.200	261.12	0.000	0.000	0.00
D	6515009235000	SCISSORS GEN SURG NELSON LUNG DISSECTING 9IN	EA	1	0	0.160	0.160	52.62	0.000	0.000	0.00
D	6515006903224	SCISSORS GEN SURG POTTS SMITH 7.50IN ANG	EA	1	0	0.190	0.100	104.97	0.000	0.000	0.00
A	6515015012984	SCISSORS GENERAL SURGICAL TENOTOMY POINT POTTS STR CRS 7"LG	EA	8	8	4.400	0.960	1,165.84	4.400	0.960	1,165.84
A	6515006903222	SCISSORS POTTS 7.50IN ANG HDL 23MM CUT	EA	2	2	0.280	0.020	378.56	0.280	0.020	378.56
A	6515015548681	SCRIBE FIBER LASER FOR 6515015494221 DORNIER LASER	EA	2	2	0.700	0.200	21.74	0.700	0.200	21.74
D	6515011398238	SHEARS RIB CUTTING HAND STILLE 10IN PASSIVAT	EA	1	0	0.100	0.100	150.00	0.000	0.000	0.00
A	7210002999611	SHEET BED COTTON GRAY GREEN NONDISPOSABLE	EA	20	20	29.420	2.000	387.20	29.420	2.000	387.20
A	6530NCM071622	SOCKET, ACCESSORY CLAMP	EA	4	4	8.000	4.000	1,240.00	8.000	4.000	1,240.00

Note. A = quantity unchanged; B = quantity increase; C = quantity decrease; D = delete; E = add, deleted replacement item; F = add new item

Status	NSN	Supply description	UI	AS qty	EESP qty	AS wt (lbs)	AS cube (cu ft)	AS cost	EESP wt (lbs)	EESP cube (cu ft)	EESP cost
A	6515014603900	SOUND URETHRAL CRS 12FR STER GOODWIN SOUNDS SET OF 10	SE	2	2	3.100	0.500	1,289.40	3.100	0.500	1,289.40
A	6530011310051	STAND IV IRRIGATION CONTAINER 109IN	EA	2	2	52.000	19.200	387.00	52.000	19.200	387.00
D	6515011304923	STAPLER SURGICAL GASTROINTESTINAL 50ML CAP 2	EA	1	0	1.200	0.300	3,160.05	0.000	0.000	0.00
D	6515011304922	STAPLER SURGICAL THORACIC- ABDOMINAL AUTOMATIC	EA	1	0	2.200	0.308	849.48	0.000	0.000	0.00
A	6530014632834	STIRRUPS LITHOTOMY UOLOGICAL SPECIAL USED IN O R TO SPT FT&LEG	PR	2	2	15.000	2.200	9,144.78	15.000	2.200	9,144.78
A	6515013641457	STONE REMOVER CYSTOSCOPIC SEGURA 4 WIRE MINI BASKET 2.40FR SHAFT	EA	40	40	4.000	4.000	10,374.80	4.000	4.000	10,374.80
A	6515013641457	STONE REMOVER CYSTOSCOPIC SEGURA 4 WIRE MINI BASKET 2.40FR SHAFT	EA	20	20	2.000	2.000	5,187.40	2.000	2.000	5,187.40
A	6530009829625	STOOL REVOLVING W/OUT FOOT REST	EA	2	2	46.000	8.600	371.12	46.000	8.600	371.12
A	6515015548419	STRIPPER FIBER REMOVAL 270UM F/DORNIER LASER USAGE 6515015494221	EA	2	2	1.760	0.280	420.22	1.760	0.280	420.22
A	6515015548601	STRIPPER FIBER REMOVAL 400UM FOR 6515015494221 DORNIER LASER	EA	2	2	1.100	0.240	246.34	1.100	0.240	246.34
A	6515014615130	STYLET URINARY CATHETER VAN BUREN CURVE CRS 6 FR BLUNT	EA	8	8	2.800	0.080	413.84	2.800	0.080	413.84
A	7105007271091	TABLE FOLDING GP 72X30X30IN	EA	2	2	34.000	5.044	437.54	34.000	5.044	437.54

Note. A = quantity unchanged; B = quantity increase; C = quantity decrease; D = delete; E = add, deleted replacement item; F = add new item

Status	NSN	Supply description	UI	AS qty	EESP qty	AS wt (lbs)	AS cube (cu ft)	AS cost	EESP wt (lbs)	EESP cube (cu ft)	EESP cost
A	6530015498583	TABLE UTILITY HOSPITAL TYPE 2 BAY 44X30X24"	EA	2	2	12.000	0.600	2,362.28	12.000	0.600	2,362.28
D	7210002999610	TOWEL HAND COTTON GRN/GRAY NONDISP 36X17IN	EA	24	0	5.760	0.240	30.24	0.000	0.000	0.00
A	6515014466261	TRACTOR PERINEAL PROSTATECTOMY SS LOWSLEY CRVD 21.5FR	EA	2	2	1.000	1.200	4,300.64	1.000	1.200	4,300.64
A	6530007939570	TRAY INSTRUMENT 19X12X.75IN STEEL	EA	2	2	6.500	0.300	57.10	6.500	0.300	57.10
D	6530014866556	TRAY STER 2.75IN 13.125IN 22.125IN STEAM	EA	2	0	46.000	1.000	3,084.00	0.000	0.000	0.00
D	6530014866573	TRAY STER 3.675IN 13.125IN 22.125INHT	EA	2	0	33.000	1.000	3,285.00	0.000	0.000	0.00
A	6530015700727	TRAY,ENDOSCOPIC INSTRUMENT STERILIZATION PLASTIC	EA	8	8	24.000	5.760	1,440.00	24.000	5.760	1,440.00
D	6532002999628	TROUSERS OPERATING SURG LG GRN/GRAY	EA	5	0	3.500	0.185	66.40	0.000	0.000	0.00
A	6515015498945	URETEROSCOPE FLEXIBLE BACKWARDS ARTICULATING	EA	4	4	3.520	1.200	34,684.72	3.520	1.200	34,684.72
A	6515014628414	URETEROSCOPE SEMI-R TWO SEPARATE WORKING CHANNELS 3.4&2.3 FR	EA	2	2	2.200	0.200	17,231.50	2.200	0.200	17,231.50
A	6515015548587	VALVE ENDOSCOPIC 0-5FR SURSEAL II W/BALL ADAPTR F/WOLF OR STORZ	EA	6	6	3.960	0.660	1,130.22	3.960	0.660	1,130.22
A	7240009654426	WASTE RECEPTACLE	EA	2	2	2.000	2.000	25.56	2.000	2.000	25.56
D	6530012460156	WRAPPER STERILIZATION 54X54IN CTN GREEN 6S	PG	18	0	165.240	10.800	1,746.90	0.000	0.000	0.00

Note. A = quantity unchanged; B = quantity increase; C = quantity decrease; D = delete; E = add, deleted replacement item; F = add new item

Status	NSN	Supply description	UI	AS qty	EESP qty	AS wt (lbs)	AS cube (cu ft)	AS cost	EESP wt (lbs)	EESP cube (cu ft)	EESP cost
A	6530012442776	WRAPPER STERILIZATION COTTON 24X24IN GREEN 6S	EA	12	12	23.760	1.224	339.60	23.760	1.224	339.60
Medications											
D	6505014491618	AZITHROMYCIN TAB 250MG 18S	PG	24	0	2.400	3.600	2,566.80	0.000	0.000	0.00
D	6505014542526	BACITRACIN ZINC OINT 500UNIT/GM 14.2GM 1/2 OZ	TU	288	0	19.510	0.570	1,025.28	0.000	0.000	0.00
D	6505013316461	BENZOIN TINCTURE COMPOUND USP 0.600ML 40S	PG	2	0	0.800	0.200	246.34	0.000	0.000	0.00
D	6505002998760	EPINEPHRINE INJ AQUEOUS 1MG/1ML AMP 25S	PG	20	0	2.954	2.000	796.80	0.000	0.000	0.00
D	6505013953039	FLUCONAZOLE TAB 150MG I.S. 12S	PG	2	0	0.414	0.200	386.08	0.000	0.000	0.00
C	6505013550902	GLYCINE IRRIGATION 4000ML/BT 4S	PG	4	1	36.000	4.800	209.64	9.000	1.200	52.41
D	6505001538480	HYDROGEN PEROXIDE TOPICAL SOL 1PINT (473 ML)	BT	12	0	13.148	2.400	135.24	0.000	0.000	0.00
C	6505011007985	IOTHALAMATE MEGLUMINE INJ 60% 50ML VI 50S	PG	4	1	60.800	2.240	3,372.52	15.200	0.560	843.13
C	6505000636197	LIDOCAINE HCL TOPICAL SOLUTION 100ML BT	BT	20	1	6.800	0.320	25.20	0.340	0.016	1.26
C	6505002126665	LIDOCAINE HYDROCHLORIDE JELLY USP 10ML VI 25S	PG	6	1	6.000	1.200	825.00	1.000	0.200	137.50
C	6505010964116	LIDOCAINE HYRDOCHLORIDE JELLY 20ML VI 25S	PG	6	1	12.000	0.720	2,324.58	2.000	0.120	387.43

Note. A = quantity unchanged; B = quantity increase; C = quantity decrease; D = delete; E = add, deleted replacement item; F = add new item

Status	NSN	Supply description	UI	AS qty	EESP qty	AS wt (lbs)	AS cube (cu ft)	AS cost	EESP wt (lbs)	EESP cube (cu ft)	EESP cost
D	6505014554200	LIDOCAINE&EPINEPHRINE 1:100000 20ML VI	VI	20	0	3.308	2.000	170.40	0.000	0.000	0.00
C	6505001117829	LUBRICANT SURGICAL 5 GRAM 144S	PG	2	1	1.865	0.200	50.10	0.933	0.100	25.05
C	6505013154762	POVIDONE-IODINE TOPICAL SOL 10% 32FL OZ 12S	PG	4	2	8.000	8.000	309.92	4.000	4.000	154.96
D	6505013308926	SOD CHLOR IRRIGATION 0.9% 1000ML 16S	PG	6	0	198.000	18.000	146.88	0.000	0.000	0.00
D	6505013308926	SOD CHLOR IRRIGATION 0.9% 1000ML 16S	PG	3	0	99.000	9.000	73.44	0.000	0.000	0.00
D	6505013306269	SODIUM CHLORIDE FOR INJ 1000ML BAG 12S	PG	20	0	480.000	60.000	231.60	0.000	0.000	0.00
Consumables											
A	8105011839768	BAG PLASTIC 39X33IN 33 GAL 30 LB LOAD 125S	BX	2	2	16.000	0.720	37.04	16.000	0.720	37.04
C	6530011030098	BAG URINE COLLECTION A4 FLAT PLAS SINGLE WALL STERILE DISP 20S	PG	6	1	37.200	3.000	489.24	6.200	0.500	81.54
D	6510005977469	BANDAGE ADH.75X3IN STER DRESS 100S	PG	2	0	0.520	0.040	10.30	0.000	0.000	0.00
D	6515010095293	BLADE SURG KNIFE DETACHABLE #15 150S	PG	2	0	1.500	0.200	74.94	0.000	0.000	0.00
D	6515005412939	BRIDGE LOOP OSTOMY 3.75-4IN PLASTIC RNDED 20S	PG	1	0	0.580	0.100	51.83	0.000	0.000	0.00
D	6530015307918	BRUSH SCRUB SURGICAL POVIDONE IODINE 30S	PG	1	0	2.560	0.756	26.00	0.000	0.000	0.00
B	6515011912011	CATH KIT SUPRAPUBIC STAMEY 14FR	EA	10	16	7.500	0.250	90.10	12.000	0.400	144.16

Note. A = quantity unchanged; B = quantity increase; C = quantity decrease; D = delete; E = add, deleted replacement item; F = add new item

Status	NSN	Supply description	UI	AS qty	EESP qty	AS wt (lbs)	AS cube (cu ft)	AS cost	EESP wt (lbs)	EESP cube (cu ft)	EESP cost
D	6515010988356	CATH URETHRAL FOLEY 18FR ADL 5CC RND TIP 12S	PG	1	0	2.000	0.270	69.90	0.000	0.000	0.00
C	6515011535109	CATH URETHRAL FOLEY 8FR CHILD 3CC DISP12S	PG	4	3	3.680	1.032	100.44	2.760	0.774	75.33
C	6515004003401	CATH URETHRAL ROB-NEL STR 12FR ADL PLAS 100S	PG	2	1	5.500	1.000	83.22	2.750	0.500	41.61
C	6515010988355	CATHETER FOLEY 16FR RD TIP 12S	PG	4	3	7.000	1.000	69.28	5.250	0.750	51.96
C	6515013485095	CATHETER URETERAL URINARY DRAINAGE 5FR PLASTIC OPEN END TIP	EA	20	12	7.240	2.000	296.40	4.344	1.200	177.84
C	6515013581506	CATHETER URETERAL URINARY DRAINAGE A6 STR 5FR CONE SIZE 8FR 24S	PG	2	1	1.500	0.800	214.78	0.750	0.400	107.39
C	6515012192751	CATHETER URETHRAL COUNCILL MOD RETENTION 16FR RED RBBR/PLAS 12S	PG	4	3	4.840	0.360	1,115.72	3.630	0.270	836.79
A	6515014615065	CATHETER URETHRAL COUVLAIRE TIP 3WAY COLOR CODED 16IN LG 10S	EA	2	2	1.100	0.240	420.22	1.100	0.240	420.22
C	6515001048696	CATHETER URETHRAL FOLEY 22FR ROUND TIP 12S	BX	4	3	13.000	2.000	113.20	9.750	1.500	84.90
C	6515013223066	CATHETER URETHRAL TIEMANN DSGN B10 MOD 16FR COUDE TIP RBBR 12S	PG	4	3	0.600	0.096	196.12	0.450	0.072	147.09
A	6515014615090	CATHETER URETHRAL URINARY DRAINAGE 30CC COUVELAIRE TIP 10S	PG	2	2	0.300	0.220	418.12	0.300	0.220	418.12
B	6515013707538	CLIP HEMOSTATIC WECK DESIGN SMALL PREFORMED TITANIUM STER 240S	PG	2	3	0.500	0.080	567.64	0.750	0.120	851.46
C	6515013006565	CLIP HEMOSTATIC WECK MEDIUM SIZE PREFORMED	PG	4	3	1.000	0.016	593.28	0.750	0.012	444.96

Note. A = quantity unchanged; B = quantity increase; C = quantity decrease; D = delete; E = add, deleted replacement item; F = add new item

Status	NSN	Supply description	UI	AS qty	EESP qty	AS wt (lbs)	AS cube (cu ft)	AS cost	EESP wt (lbs)	EESP cube (cu ft)	EESP cost
		TITANIUM STER 200S									
D	6515001178416	CONDOM PROPHYLUBRICATED W/RECEPTACLE END 144S	PG	2	0	2.200	0.400	48.72	0.000	0.000	0.00
D	6530011732269	CONTAINER SHARPS AUTOCLAV 2GL 20S	PG	1	0	0.010	0.001	112.41	0.000	0.000	0.00
C	6515013669705	CORD CONDUCTIVE RESECTOSCOPE 12S	PG	4	1	48.000	8.000	1,872.68	12.000	2.000	468.17
C	6515013669705	CORD CONDUCTIVE RESECTOSCOPE 12S	PG	8	1	96.000	16.000	3,745.36	12.000	2.000	468.17
D	6530008377472	CUP SPECIMEN PLAS DISP 4.5OZ 100S	PG	2	0	13.820	4.000	22.06	0.000	0.000	0.00
C	6505010453255	DETERGENT SURG 4% CHLORHEX GLUCONATE 32OZ	BT	24	4	61.440	18.000	381.60	10.240	3.000	63.60
B	6515015002736	DILATOR URETHRAL PLAS 65CM X 6MM OD 7FR CATHETER BALLOON OCCLUSI	EA	6	10	0.180	0.180	918.96	0.300	0.300	1,531.60
C	6840014763011	DISINFECTANT INSTRUMT CIDEX 1GL BT 4S	PG	8	1	49.200	0.944	390.40	6.150	0.118	48.80
A	6530012114806	DRAPE SURG PLASTIC 22.750X19.625" IRRIGATION POUCH DISP STER 10S	PG	4	4	4.000	0.400	435.32	4.000	0.400	435.32
C	6530012114791	DRAPE X-RAY DISPOSABLE STERILE FITS IMAGE INTENSIFIERS 44X57"10S	PG	4	2	38.000	3.200	1,668.68	19.000	1.600	834.34
C	6510011621558	DRESSING OP-SITE PERM 10CM X 14CM 50S	BX	4	1	0.000	11.000	0.80	0.000	2.750	0.20
C	6515014605488	ELECTRODE CUTTING LOOP 26 FR STER RIGHT ANGLE DISP 12S	PG	2	1	0.560	0.220	2,988.56	0.280	0.110	1,494.28

Note. A = quantity unchanged; B = quantity increase; C = quantity decrease; D = delete; E = add, deleted replacement item; F = add new item

Status	NSN	Supply description	UI	AS qty	EESP qty	AS wt (lbs)	AS cube (cu ft)	AS cost	EESP wt (lbs)	EESP cube (cu ft)	EESP cost
C	6515013754129	ELECTRODE CUTTING LOOP RESECTOSCOPE 26FR PLAS STER DISP 6S	PG	2	1	0.360	0.020	2,173.50	0.180	0.010	1,086.75
C	6515014605500	ELECTRODE CUTTING LOOP ROLLER BALL WHITE 26FR STER DISP 6S	PG	2	1	0.220	0.160	2,363.72	0.110	0.080	1,181.86
A	6515014472139	EVACUATOR BLADDER DESIGNATION ASPIRATING IRRIGATING PLASTIC 10S	PG	2	3	1.200	0.800	87.20	1.800	1.200	130.80
C	6515010731743	FORCEPS SUTURE CLIP ALUM 5IN REMOV STAPLES STER 12S	PG	4	2	4.000	4.000	128.08	2.000	2.000	64.04
D	6510010037697	GAUZE ABS IODO IMPREG .25 INX 5 YDS 12S	PG	1	0	0.800	1.000	29.01	0.000	0.000	0.00
A	6510011534559	GAUZE ABSORBENT PLEAT 180INX0.500IN 12S	BX	2	2	2.000	0.212	81.26	2.000	0.212	81.26
D	6515015199172	GLOVE PATIENT EXAM M NON STER PWD FREE 100S	PG	3	0	3.000	0.375	20.97	0.000	0.000	0.00
D	6515015199161	GLOVE PATIENT EXAM NON STER PWD FREE L 100S	PG	10	0	10.000	1.250	69.90	0.000	0.000	0.00
D	6515015199173	GLOVE PATIENT EXAM SM NON STER PWDRFREE 100S	PG	5	0	5.000	0.625	34.95	0.000	0.000	0.00
D	6515015196348	GLOVE SURG LATEX PWDRFREE SZ 7.5 GAUNT 50S	PG	2	0	10.000	0.250	284.98	0.000	0.000	0.00
D	6515015196347	GLOVE SURGEON LATEX & POWDER FREE 8 STER 50S	PG	2	0	10.000	0.250	284.98	0.000	0.000	0.00
B	6515014472490	GUID WIRE CARDIOVASCULAR CATH 145CM 0.035IN DISP STER 5S	PG	8	13	0.800	0.800	2,583.84	1.300	1.300	4,198.74
B	6515014473258	GUIDE WIRE URETERAL 0.35IN SZ 150CM DIA 5S	PG	12	20	1.200	1.440	1,060.68	2.000	2.400	1,767.80

Note. A = quantity unchanged; B = quantity increase; C = quantity decrease; D = delete; E = add, deleted replacement item; F = add new item

Status	NSN	Supply description	UI	AS qty	EESP qty	AS wt (lbs)	AS cube (cu ft)	AS cost	EESP wt (lbs)	EESP cube (cu ft)	EESP cost
B	6515013558540	GUIDE WIRE URETHRAL 150X0.35IN ULTRA LOW FRICTION SOFT FLEX TIP5S	PG	12	20	1.200	0.120	3,752.16	2.000	0.200	6,253.60
C	6530014687199	INDICATOR STERILIZATION SHEET 1000S	PG	4	1	2.200	0.400	545.68	0.550	0.100	136.42
C	6530013511698	INDICATOR STERILZ STRIP STEAM TAMPERPROOF U/W STERILX SYS 1000S	PG	4	1	4.000	0.400	757.32	1.000	0.100	189.33
A	6515014977585	IRRIGATION SET UROLOGICAL TUBUING STER DISP 2-BAG LATEX FREE 10S	PG	2	2	8.200	3.600	152.58	8.200	3.600	152.58
C	6515013324763	IRRIGATION SET UROLOGICAL 3 COMPONENTS SINGLE BOTTLE STERILE 20S	PG	10	4	19.500	2.340	3,028.40	7.800	0.936	1,211.36
C	6515014609167	IRRIGATION SET UROLOGICAL STER DISP 20S	PG	2	1	20.000	3.760	211.94	10.000	1.880	105.97
C	6515013277257	MASK SURG W/ VISOR SHEILD 100S	PG	4	1	16.000	1.000	416.08	4.000	0.250	104.02
D	6515015261627	NEEDLE HYPO 22GAX1.5IN SAFETY SHIELDING 50S	PG	2	0	2.440	0.300	44.00	0.000	0.000	0.00
C	6515015261730	NEEDLE HYPO GP 25GA X1IN SAFETY SHIELD 50S	PG	4	1	22.200	14.600	88.00	5.550	3.650	22.00
D	6515015261729	NEEDLE HYPODERMIC SAFETY 18GA X 1.500 50S	PG	1	0	0.250	0.020	22.00	0.000	0.000	0.00
B	6515014603599	NEEDLE LIGATURE	EA	2	8	1.100	0.240	1,449.00	4.400	0.960	5,796.00
D	7530002237939	NOTEBOOK STENOGRAPHER'S 6X9 IN 12S	PG	2	0	10.868	0.308	27.22	0.000	0.000	0.00
C	6515015506419	PACK CYSTOSCOPY IV 12S	PG	6	3	3.300	0.720	641.64	1.650	0.360	320.82

Note. A = quantity unchanged; B = quantity increase; C = quantity decrease; D = delete; E = add, deleted replacement item; F = add new item

Status	NSN	Supply description	UI	AS qty	EESP qty	AS wt (lbs)	AS cube (cu ft)	AS cost	EESP wt (lbs)	EESP cube (cu ft)	EESP cost
D	6530011190015	PAD BED LINEN PROTECT NONWOVEN POLY DISP 300S	PG	1	0	28.000	2.000	24.74	0.000	0.000	0.00
D	6510007863736	PAD ISOPROPYL ALCOHOL IMPREGNATED WHITE 200S	PG	2	0	2.000	0.200	5.80	0.000	0.000	0.00
D	7530011167865	PAD WRITING PAPER ADH 3X5IN 100SH/PAD 12S	DZ	2	0	0.420	0.220	21.60	0.000	0.000	0.00
D	7520009357135	PEN BALL-POINT BLACK FINE 12S	DZ	2	0	1.500	0.030	10.50	0.000	0.000	0.00
C	6515010747602	PLUG CATH YELLOW W/CLR PLAS DRAIN PROTECTION 1.75IN 250S	PG	2	1	4.500	0.350	323.10	2.250	0.175	161.55
D	6515013225898	RAZOR SURG PREP PLAS 100S	PG	1	0	0.200	0.100	42.00	0.000	0.000	0.00
C	6515015179934	SEALS BLUE SILICONE CIRCON SELF-SEALING F/CYSTOSCOPIC KIT 12S	PG	8	4	0.800	0.800	428.48	0.400	0.400	214.24
B	6510000547254	SKIN CLOSURE ADH SURG POROUS .50X4IN 6S	PG	2	26	1.420	0.700	96.08	18.460	9.100	1,249.04
C	6515015389265	SPECULUM VAGINAL DISP SZ MED PLAS 100S	PG	2	1	3.200	4.000	231.84	1.600	2.000	115.92
D	6510001161285	SPONGE SURG 12-PLY 4X8IN 80S	PG	1	0	5.000	3.000	208.31	0.000	0.000	0.00
D	6510007219808	SPONGE SURG CELL&COT&GAUZE 4X4IN STER 1200S	PG	1	0	13.000	2.626	81.29	0.000	0.000	0.00
A	6515012078226	STAPLE UNIT SURG GI 3MM 52 STAPLES DISP 12S	PG	2	2	3.200	0.320	921.14	3.200	0.320	921.14
B	6515012078223	STAPLE UNIT SURG THORACIC- ABDOMINAL 3.5MM ID W/33 CRS STAPLES 6S	PG	2	3	0.200	0.200	1,032.16	0.300	0.300	1,548.24

Note. A = quantity unchanged; B = quantity increase; C = quantity decrease; D = delete; E = add, deleted replacement item; F = add new item

Status	NSN	Supply description	UI	AS qty	EESP qty	AS wt (lbs)	AS cube (cu ft)	AS cost	EESP wt (lbs)	EESP cube (cu ft)	EESP cost
C	6515013003532	STAPLER SURGICAL 35 WIDE REFLEX ONE DESIGN CRS STERILE DISP 6S	PG	16	11	23.200	0.222	855.04	15.950	0.153	587.84
C	6515014603700	STENT KIT URETERAL 125 CM LG	EA	10	4	2.000	0.100	1,398.30	0.800	0.040	559.32
A	6515015534747	STENT URETERAL 6FR BY 22CM DUAL POLARIS ULTRA	EA	4	4	2.240	0.120	1,391.04	2.240	0.120	1,391.04
C	6515015534725	STENT URETERAL 6FR BY 26CM POLARIS ULTRA DUAL DUROMETER	EA	20	4	20.000	0.600	6,955.20	4.000	0.120	1,391.04
C	6515015534721	STENT URETERAL 6FR X 24CM FIRM AND SOFT HYDROPLUS COATING	EA	20	4	11.000	2.400	6,955.20	2.200	0.480	1,391.04
A	6515015531608	STENT URETERAL POLARIS ULTRA 6 FR BY 28 CM	EA	4	4	0.480	0.440	1,391.04	0.480	0.440	1,391.04
D	6515008648864	STOPCOCK IV 3-WAY LUER MALE 20-30IN 50S	PG	1	0	2.000	0.200	96.87	0.000	0.000	0.00
D	6532004056009	SURGICAL PACK GOWN & TOWEL LG 28S	PG	1	0	17.000	2.130	119.54	0.000	0.000	0.00
C	6515011430756	SUTURE ABS 0.54IN BRAID COATED VIOLET POLYGL 12S	PG	4	3	0.400	0.400	151.32	0.300	0.300	113.49
B	6515013633541	SUTURE ABS 1-0 48IN GEN CLO NDL TP-1 MONO	EA	8	64	1.600	0.080	600.96	12.800	0.640	4,807.68
C	6515013487661	SUTURE ABS GI SZ 2-0 1 27IN STRAND NDL T-5 GUT NATURAL BR 36S	PG	4	1	0.800	0.120	215.44	0.200	0.030	53.86
B	6515012192747	SUTURE ABS GI SZ 2-0 27IN NDL VICRYL 3S	PG	4	11	0.800	0.044	521.64	2.200	0.121	1,434.51
C	6515013396373	SUTURE ABS GI SZ 3-0 1 27IN STRAND GUT B3 1/2 CIR NDL T-5 C7 RD36	PG	4	2	213.000	0.400	0.00	106.500	0.200	0.00

Note. A = quantity unchanged; B = quantity increase; C = quantity decrease; D = delete; E = add, deleted replacement item; F = add new item

Status	NSN	Supply description	UI	AS qty	EESP qty	AS wt (lbs)	AS cube (cu ft)	AS cost	EESP wt (lbs)	EESP cube (cu ft)	EESP cost
C	6515001169103	SUTURE ABS GUT 2.25FT 5-0 SGL ARMED 36S	PG	4	1	0.800	0.080	492.08	0.200	0.020	123.02
C	6515011256584	SUTURE ABS GUT TREAT 5-0 SGL ARMED 12S	PG	4	3	1.000	0.040	427.96	0.750	0.030	320.97
A	6515013445235	SUTURE ABS PLAS SURG SZ 4-0 1 18IN STRAND NEEDLE PC-1 1S	PG	4	4	0.040	0.040	309.84	0.040	0.040	309.84
C	6515012281874	SUTURE ABS PLAS SURG SZ 5-0 18IN NDL P-3 CLEAR MONO 1S	DZ	12	8	12.000	25.776	946.80	8.000	17.184	631.20
C	6515011738884	SUTURE ABS SURG GEN CLO 0 SGL ARM COAT VICRYL 36S	PG	4	1	1.840	0.280	368.12	0.460	0.070	92.03
C	6515013180434	SUTURE ABS SURG GI/INTESTINAL SZ 4-0 27IN GUT NATURAL STER 36S	PG	4	1	0.600	0.096	196.12	0.150	0.024	49.03
A	6515012509139	SUTURE ABS UROLOGICAL SZ 2-0 27IN LG NDL UR-6 VIOLET ORDER BY 3S	DZ	2	2	1.220	0.088	140.78	1.220	0.088	140.78
C	6515012943804	SUTURE ABS UROLOGICAL SZ 3-0 27IN NDL RB-1 PDS MONO ORDER BY 3S	DZ	8	6	0.800	0.120	223.36	0.600	0.090	167.52
C	6515014600876	SUTURE ABSORBABLE 5.0 RND TAPER 27IN 36S	PG	4	1	2.200	0.080	398.72	0.550	0.020	99.68
C	6515014601558	SUTURE ABSORBABLE SURG CHROMIC SZ 0 27IN LG TT-3 5/8 CIRCLE NDLE 36S	PG	4	1	0.600	0.120	410.72	0.150	0.030	102.68
C	6515014601562	SUTURE ABSORBABLE SURG CHROMIC SZ 0 27IN LG TT-3 5/8CIRCLE NDLE 36S	PG	4	1	0.600	0.120	1,212.28	0.150	0.030	303.07
C	6515014600856	SUTURE ABSORBABLE SURGICAL SZ 4-0 MONOFILAMENT 18IN 12S	PG	4	3	2.200	0.480	252.12	1.650	0.360	189.09
C	6515010615377	SUTURE NONAB SILK BLK 00 36S	PG	4	1	1.000	0.080	350.36	0.250	0.020	87.59

Note. A = quantity unchanged; B = quantity increase; C = quantity decrease; D = delete; E = add, deleted replacement item; F = add new item

Status	NSN	Supply description	UI	AS qty	EESP qty	AS wt (lbs)	AS cube (cu ft)	AS cost	EESP wt (lbs)	EESP cube (cu ft)	EESP cost
D	6515012525573	SUTURE NONABS 2-0 60IN GEN CLO NDL TP-1 12S	PG	1	0	0.141	0.100	60.15	0.000	0.000	0.00
C	6515011783894	SUTURE NONABS OB/GYN SZ 1 36IN ATRALOC NDL CT MONO 24S	PG	4	2	4.000	0.120	377.44	2.000	0.060	188.72
A	6515010633532	SUTURE NONABS SURG SILK SZ-0 30IN UNARMED 12S	PG	4	4	0.600	0.800	141.00	0.600	0.800	141.00
D	6515004330420	SUTURE NONABS SZ 2-0 12 2.50FT STRANDS SLK BR	PG	1	0	0.480	0.021	109.04	0.000	0.000	0.00
C	6515014600181	SUTURE NONABSORBABLE 2-60IN LG SZ 0 72S	PG	4	1	4.000	2.000	263.20	1.000	0.500	65.80
C	6515014600165	SUTURE NONABSORBABLE SURG SZ-0 2-60IN LG 72S	PG	4	1	4.000	2.000	261.00	1.000	0.500	65.25
C	6515004361881	SUTURE REMOVAL KIT STERILE DISP F/REMOVING SI	PG	2	1	13.000	1.224	74.34	6.500	0.612	37.17
C	6515015261725	SYRINGE AND NEEDLE HYPODERMIC SAFETY 21GAGE BY 1 INCH 50S	PG	4	1	32.000	15.200	66.44	8.000	3.800	16.61
C	6515013568511	SYRINGE HYPO GP 10ML LUER LOCK PLAS STER 400S	PG	2	1	24.000	2.800	91.72	12.000	1.400	45.86
C	6515012907579	SYRINGE IRRIGATING TOMEY 70CC SGL SCALE W/ADAPTER STER DISP 50S	PG	2	1	0.260	0.028	193.44	0.130	0.014	96.72
D	7510000822521	TAPE ADHESIVE CLEAR PLAS 0.5INX450IN 12S	DZ	4	0	0.280	0.020	33.84	0.000	0.000	0.00
C	6510008901372	TAPE ADHESIVE SURG POROUS 1INX10YD 12S	PG	4	3	2.680	0.160	22.36	2.010	0.120	16.77

Note. A = quantity unchanged; B = quantity increase; C = quantity decrease; D = delete; E = add, deleted replacement item; F = add new item

Status	NSN	Supply description	UI	AS qty	EESP qty	AS wt (lbs)	AS cube (cu ft)	AS cost	EESP wt (lbs)	EESP cube (cu ft)	EESP cost
D	6510009268883	TAPE ADHESIVE SURG WOVEN 2INX10YD 6S	PG	1	0	1.070	1.000	14.24	0.000	0.000	0.00
C	6515013849023	TUBE DRAINAGE SURG PENROSE 12IN X0.6 WI 200S	PG	2	1	10.400	2.800	224.46	5.200	1.400	112.23
C	6515013851697	TUBE DRAINAGE SURG PENROSE 7/8X12IN 200S	PG	2	1	10.400	2.800	154.18	5.200	1.400	77.09
C	6515013852013	TUBE DRAINAGE SURGICAL PENROSE 12X3/8IN 200S	PG	2	1	10.400	2.800	154.18	5.200	1.400	77.09
C	6515008413664	TUBE NASAL FEEDING PREMAT INFANT 5FR 15IN 50S	PG	2	1	1.400	0.164	71.92	0.700	0.082	35.96
B	6515015550050	VALVE BIOPSY ENDOSCOPY USE W/MAJ-578/-668/-891 10S	PG	8	10	16.000	0.800	324.56	20.000	1.000	405.70
D	6530014588308	WRAPPER STERILIZATION 30X30IN HEAVY DUTY 1-STEP 144S	PG	2	0	20.000	2.000	200.00	0.000	0.000	0.00
C	6530014588321	WRAPPER STERILIZATION 36X36"HEAVY-DUTY ONE STEP 72S	PG	2	1	12.000	3.400	123.10	6.000	1.700	61.55
C	6530011942244	WRAPPER STERILIZATION 45X45IN BLUE DISP 250S	PG	2	1	50.000	6.000	367.78	25.000	3.000	183.89
A	6530014588314	WRAPPER STERILIZATION 54X54IN ONE-STEP 24S	PG	2	2	35.000	5.200	127.52	35.000	5.200	127.52
D	6530015601021	WRAPPER STERILIZATION POLYPR GRN 36X36IN 150S	PG	1	0	5.000	18.000	179.00	0.000	0.000	0.00
Durables											
B	6515015499014	FIBER LASER LITHOTRIPTOR USED ON 6515015494221 DORNIER H2O 3S	PG	2	3	3.100	0.500	5,853.72	4.650	0.750	8,780.58

Note. A = quantity unchanged; B = quantity increase; C = quantity decrease; D = delete; E = add, deleted replacement item; F = add new item

Status	NSN	Supply description	UI	AS qty	EESP qty	AS wt (lbs)	AS cube (cu ft)	AS cost	EESP wt (lbs)	EESP cube (cu ft)	EESP cost
D	6230015179944	FLASHLIGHT EXAM DISPOSABLE 10S	EA	4	0	11.000	0.880	8.40	0.000	0.000	0.00
D	7520003126124	MARKER TUBE FINE TIP BLACK	DZ	2	0	1.000	0.020	18.78	0.000	0.000	0.00
D	6532009143598	SHIRT OPER SURG MENS/ LARGE	EA	10	0	5.400	0.370	58.10	0.000	0.000	0.00

Note. A = quantity unchanged; B = quantity increase; C = quantity decrease; D = delete; E = add, deleted replacement item; F = add new item

REPORT DOCUMENTATION PAGE

The public reporting burden for this collection of information is estimated to average 1 hour per response, including the time for reviewing instructions, searching existing data sources, gathering and maintaining the data needed, and completing and reviewing the collection of information. Send comments regarding this burden estimate or any other aspect of this collection of information, including suggestions for reducing the burden, to Washington Headquarters Services, Directorate for Information Operations and Reports, 1215 Jefferson Davis Highway, Suite 1204, Arlington, VA 22202-4302, Respondents should be aware that notwithstanding any other provision of law, no person shall be subject to any penalty for failing to comply with a collection of information if it does not display a currently valid OMB Control number. **PLEASE DO NOT RETURN YOUR FORM TO THE ABOVE ADDRESS.**

1. REPORT DATE (DD MM YY) 18 11 10	2. REPORT TYPE Technical Document	3. DATES COVERED (from – to) Jan–Oct 2010
--	---	---

4. TITLE : Air Force Operational Medicine: Using the Enterprise Estimating Supplies Program to Develop Materiel Solutions for the Medical Urology Team (FFPPT)	5a. Contract Number: : GS-09K-99BHD 5b. Grant Number: 5c. Program Element Number: 5d. Project Number: 9T7SDGIS006 5e. Task Number: 5f. Work Unit Number: 60334
--	---

6. AUTHORS: Nix, Ralph E.; Hopkins, Curt C.; Wing, Vern	
---	--

7. PERFORMING ORGANIZATION NAME(S) AND ADDRESS(ES) Commanding Officer Naval Health Research Center 140 Sylvester Rd San Diego, CA 92106-3521	8. PERFORMING ORGANIZATION REPORT NUMBER 11-2B
---	--

8. SPONSORING/MONITORING AGENCY NAMES(S) AND ADDRESS(ES) Commanding Officer Naval Medical Research Center 503 Robert Grant Ave Silver Spring, MD 20910-7500	Commander Navy Medicine Support Command P.O. Box 140 Jacksonville, FL 32212-0140
10. SPONSOR/MONITOR'S ACRONYM(S) NMRC/NMSC	
11. SPONSOR/MONITOR'S REPORT NUMBER(S)	

12. DISTRIBUTION/AVAILABILITY STATEMENT Approved for public release; distribution is unlimited.

13. SUPPLEMENTARY NOTES

14. ABSTRACT The Naval Health Research Center (NHRC) has used its modeling and simulation expertise to develop and update conventional U.S. Air Force medical assets since 2004. The objective of this study was to leverage medical modeling and simulation advantages to provide recommendations for allowance standard (AS) configurations based on the Air Force Medical Urology Team (FFPPT) operational and clinical requirements. NHRC analysts reviewed the FFPPT, analyzed clinical requirements with subject matter experts, and used modeling and simulation tools to develop an operationally based and patient-driven recommended 917H line list. The Unit Type Code capabilities, operational requirements, and materiel solutions were identified, addressing issues of modernization, clinical requirement, standardization, and redundancy. In this study the main rationale for change was redundancy. Total changes resulted in a reduction in weight by 49.9%, cube by 42%, and cost by 16% per set.

15. SUBJECT TERMS: modeling and simulation, Expeditionary Medical Knowledge Warehouse, EMedKW, allowance standard, U.S. Air Force; Urology

16. SECURITY CLASSIFICATION OF:			17. LIMITATION OF ABSTRACT UNCL	18. NUMBER OF PAGES 36	18a. NAME OF RESPONSIBLE PERSON Commanding Officer
a. REPORT UNCL	b. ABSTRACT UNCL	c. THIS PAGE UNCL			18b. TELEPHONE NUMBER (INCLUDING AREA CODE) COMM/DSN: (619) 553-8429