



LCS Wholeness

ASNE Day

9 February 2012

RDML Jim Murdoch
PEO Littoral Combat Ships

Report Documentation Page

Form Approved
OMB No. 0704-0188

Public reporting burden for the collection of information is estimated to average 1 hour per response, including the time for reviewing instructions, searching existing data sources, gathering and maintaining the data needed, and completing and reviewing the collection of information. Send comments regarding this burden estimate or any other aspect of this collection of information, including suggestions for reducing this burden, to Washington Headquarters Services, Directorate for Information Operations and Reports, 1215 Jefferson Davis Highway, Suite 1204, Arlington VA 22202-4302. Respondents should be aware that notwithstanding any other provision of law, no person shall be subject to a penalty for failing to comply with a collection of information if it does not display a currently valid OMB control number.

1. REPORT DATE 09 FEB 2012	2. REPORT TYPE	3. DATES COVERED 00-00-2012 to 00-00-2012			
4. TITLE AND SUBTITLE LCS Wholeness		5a. CONTRACT NUMBER			
		5b. GRANT NUMBER			
		5c. PROGRAM ELEMENT NUMBER			
6. AUTHOR(S)		5d. PROJECT NUMBER			
		5e. TASK NUMBER			
		5f. WORK UNIT NUMBER			
7. PERFORMING ORGANIZATION NAME(S) AND ADDRESS(ES) Department of the Navy Research, Development & Acquisition,PEO Littoral Combat Ships ,Washington,DC,20350		8. PERFORMING ORGANIZATION REPORT NUMBER			
9. SPONSORING/MONITORING AGENCY NAME(S) AND ADDRESS(ES)		10. SPONSOR/MONITOR'S ACRONYM(S)			
		11. SPONSOR/MONITOR'S REPORT NUMBER(S)			
12. DISTRIBUTION/AVAILABILITY STATEMENT Approved for public release; distribution unlimited					
13. SUPPLEMENTARY NOTES Presented during ASNE Day 2012 "Naval Warfare - Critical Engineering Challenges" February 9-10, 2012, Arlington, VA					
14. ABSTRACT					
15. SUBJECT TERMS					
16. SECURITY CLASSIFICATION OF:			17. LIMITATION OF ABSTRACT Same as Report (SAR)	18. NUMBER OF PAGES 7	19a. NAME OF RESPONSIBLE PERSON
a. REPORT unclassified	b. ABSTRACT unclassified	c. THIS PAGE unclassified			



PEO LCS History



01 Feb 02

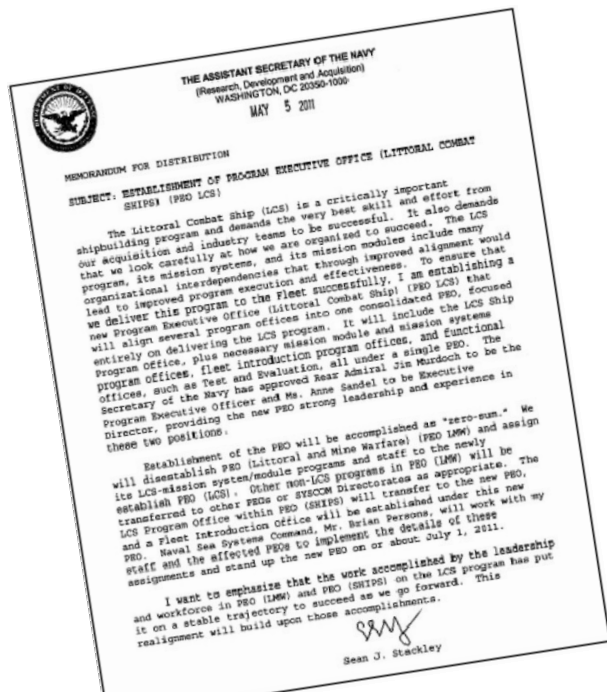
ASN (RDA) Established LCS Program Office

17 Mar 03

PEO (Ships) given overall responsibility for Program Management, PEO (LMW) for Mission Modules and PEO (IWS) for Warfare System development and integration

05 May 11

ASN(RDA) memo directs formation of PEO LCS:



• Reorganization includes the following offices:

- Littoral Combat Ship program (PMS 501)
- LCS Mission Modules (PMS 420)
- Remote Minehunting System (PMS 403)
- Unmanned Maritime Systems (PMS 406)
- Mine Warfare (PMS 495)
- Fleet Introduction (PMS 505)

EFFECTIVE 11 JUL 2011, THE OFFICES THAT MANAGE THE SEAFRAME AND MISSION MODULE PROGRAMS WERE COMBINED UNDER A SINGLE PROGRAM EXECUTIVE OFFICE – PEO LCS



LCS Wholeness



- **PEO LCS established a Fleet Introduction and Sustainment Program Office with defined roles, missions and staff**
- **LCS CONOPs drives unique support constructs**
- **We will deliver complete ships with trained crews**
- **We will ensure LCS delivers with the highest levels of reliability and performance**
- **We will provide effective LCS support that is cost effective and low risk**



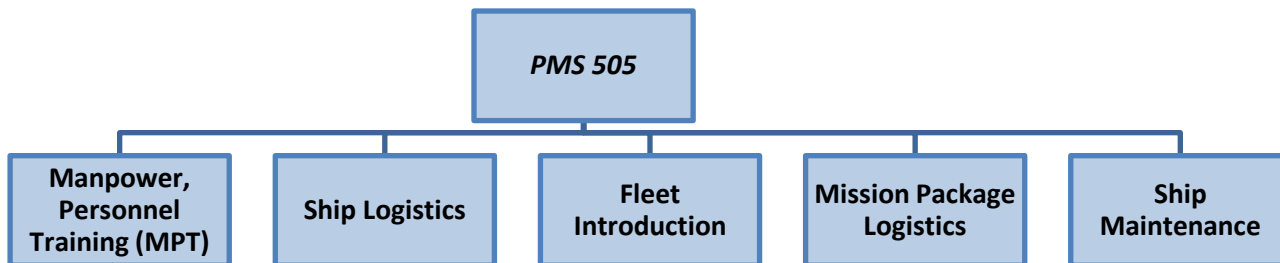
Critical Sustainment Discriminators



- **LCS CONOPs drives unique support constructs**
 - **Small crew (40 Seaframe, 15-19 Mission Package) focused on mission execution**
 - Off-ship support for most corrective, preventive, and facilities maintenance
 - Extensive reachback / distance support
 - Rotational Crewing (3 crews for 2 ships)
 - Robust Condition Based Maintenance (CBM) / Equipment Health Monitoring (EHM)
 - **Limited redundancy to meet weight, speed, space objectives**
 - **Modular, interchangeable focused mission modules**
 - **Two week CMAV (every four months), five day PMAV (every month)**
 - Compresses maintenance activity into a short timeframe
 - Continuous Maintenance planning cycle executed monthly
 - **Management and execution of Command Control Programs ashore**
 - Calibration programs, safety settings, flex hose management, valve maintenance
 - **Extended deployment / overseas stations**
 - 18 months forward deployed; 14 months homeported
 - **Two-tiered Maintenance Execution**



PMS 505 Fleet Introduction and Sustainment



- Encompasses the functions and responsibility previously residing in multiple program offices within NAVSEA
- Provides a single point of entry for the Fleet, Type Commander, and the Maintenance and Sustainment communities
- Seaframe and Mission Package training broken out from their respective Logistics departments (under PMS 501 and PMS 420) and integrated in one department
- New construction and in-service Logistics support will be combined to leverage experienced support personnel
- Establishes and manages maintenance processes that will support the full service lives of the ships and mission modules
- Takes on responsibilities previously executed by PMS 501, 420, 400F, and SEA 21A
- New Responsibility to Manage Ship Maintenance for LCSRON 1 not a function performed by PMS 501 or SEA 21

Combines All Aspects of LCS Fleet Introduction and Sustainment Under One Program Office



The Year Ahead



- **Participate in Fleet Forces war game to refine LCS sustainment plan for forward operations**
- **Crew training and ship maintenance**
 - **Award a contract for LCS Virtual Operations and Virtual Maintenance Training Software (enables real time updates for Shore Based Trainers)**
 - **Release the RFP for the LCS maintenance contract as a follow-on to the Interim Support Plan**
 - **Implement a Predictive Reliability Maintenance Strategy for selected systems in USS FREEDOM (LCS 1) in pursuit of reduced Total Ownership Costs**