

TRANSITIONING THE CODA METHODOLOGY TO FULL 2-D FOR P AND S CODAS (POSTPRINT)

Kevin M. Mayeda, et al.

**Weston Geophysical Corporation
181 Bedford St., Suite 1
Lexington, MA 02420**

30 December 2011

Technical Report

APPROVED FOR PUBLIC RELEASE; DISTRIBUTION IS UNLIMITED.



**AIR FORCE RESEARCH LABORATORY
Space Vehicles Directorate
3550 Aberdeen Ave SE
AIR FORCE MATERIEL COMMAND
KIRTLAND AIR FORCE BASE, NM 87117-5776**

REPORT DOCUMENTATION PAGE				Form Approved OMB No. 0704-0188	
Public reporting burden for this collection of information is estimated to average 1 hour per response, including the time for reviewing instructions, searching existing data sources, gathering and maintaining the data needed, and completing and reviewing this collection of information. Send comments regarding this burden estimate or any other aspect of this collection of information, including suggestions for reducing this burden to Department of Defense, Washington Headquarters Services, Directorate for Information Operations and Reports (0704-0188), 1215 Jefferson Davis Highway, Suite 1204, Arlington, VA 22202-4302. Respondents should be aware that notwithstanding any other provision of law, no person shall be subject to any penalty for failing to comply with a collection of information if it does not display a currently valid OMB control number. PLEASE DO NOT RETURN YOUR FORM TO THE ABOVE ADDRESS.					
1. REPORT DATE 30 Dec 2011		2. REPORT TYPE Technical Paper		3. DATES COVERED (From - To) 01 Sep 2010 to 31 Aug 2011	
4. TITLE AND SUBTITLE TRANSITIONING THE CODA METHODOLOGY TO FULL 2-D FOR P AND S CODAS (POSTPRINT)				5a. CONTRACT NUMBER FA9453-10-C-0255	
				5b. GRANT NUMBER	
				5c. PROGRAM ELEMENT NUMBER 62601F	
6. AUTHOR(S) Kevin M. Mayeda ¹ , W. Scott Phillips ² , Rengin Gök ³ , Michael E. Pasyanos ³ , and William R. Walter ³				5d. PROJECT NUMBER 1010	
				5e. TASK NUMBER	
				5f. WORK UNIT NUMBER 837630	
7. PERFORMING ORGANIZATION NAME(S) AND ADDRESS(ES) Weston Geophysical Corporation 181 Bedford St., Suite 1 Lexington, MA 02420				8. PERFORMING ORGANIZATION REPORT NUMBER	
9. SPONSORING / MONITORING AGENCY NAME(S) AND ADDRESS(ES) Air Force Research Laboratory Space Vehicles Directorate 3550 Aberdeen Ave SE Kirtland AFB, NM 87117-5776				10. SPONSOR/MONITOR'S ACRONYM(S) AFRL/RVBYE	
				11. SPONSOR/MONITOR'S REPORT NUMBER(S) AFRL-RV-PS-TP-2011-0012	
12. DISTRIBUTION / AVAILABILITY STATEMENT Approved for public release; distribution is unlimited. (377ABW-2011-1067; 22 July 2011).					
13. SUPPLEMENTARY NOTES Published in The Proceedings of the 2011 Monitoring Research Review – Ground-Based Nuclear Explosion Monitoring Technologies, 13 – 15 September 2011, Tucson, AZ, Volume I, pp 127-131. Government Purpose Rights. Weston Geophysical Corporation ¹ , Los Alamos National Laboratory ² , and Lawrence Livermore National Laboratory ³					
14. ABSTRACT The project objectives are: first, transition the 1D coda methodology to a full 2D capability, including both <i>P</i> -coda and <i>S</i> -coda, including the ability to account for frequency-dependent phase blockage, as well as 2D variations in peak envelope velocity and site-transfer corrections; second, improve upon the way amplitude measurements are made and tie to an absolute scale. Existing data holdings are being leveraged at both institutions and also new results used that stem from local background coda models, earthquake source scaling studies, and more-sophisticated scattering models in the literature.					
15. SUBJECT TERMS Seismic coda, Seismic calibration, Regional magnitudes					
16. SECURITY CLASSIFICATION OF:			17. LIMITATION OF ABSTRACT Unlimited	18. NUMBER OF PAGES 8	19a. NAME OF RESPONSIBLE PERSON Robert J. Raistrick
a. REPORT Unclassified	b. ABSTRACT Unclassified	c. THIS PAGE Unclassified			19b. TELEPHONE NUMBER (include area code)

TRANSITIONING THE CODA METHODOLOGY TO FULL 2-D FOR P AND S CODAS

Kevin M. Mayeda¹, W. Scott Phillips², Rengin Gök³, Michael E. Pasyanos³, and William R. Walter³

Weston Geophysical Corporation¹, Los Alamos National Laboratory²,
and Lawrence Livermore National Laboratory³

Sponsored by the Air Force Research Laboratory

Award No. FA9453-10-C-0255

Proposal No. BAA10-72

ABSTRACT

Over the past decade, the principal investigators in conjunction with the Air Force Technical Applications Center (AFTAC) have developed and implemented an empirically based regional shear wave coda methodology that provides unprecedented amplitude stability for events at local and regional distances. In regions of interest, small-scale one-dimensional (1D) coda calibrations have proven sufficient and yield very low variance estimates. For the broader, increasingly complex regions, it is unfeasible to perform a patchwork of small-scale 1D calibrations due to lack of stations and events. As a first attempt at the problem, we have embarked upon two-dimensional (2D) path (Q) corrections. However, this has proven insufficient, and it is clear that 2D variations in the *other* coda calibration parameters are significant, and their inclusion in the coda method is necessary to significantly reduce variance in broad-area coda calibrations. Specifically, lateral variations in coda shape (envelope decay), peak velocity (including coda type), and site-transfer corrections must be accounted for. Our objective is to improve the regional methodology for both *P*-coda and *S*-coda by upgrading models and transitioning to full 2D. For example, the parameterization of the synthetic coda envelope shapes has been based on a simplistic single-scattering formulation for a homogeneous full-space. We plan to test formulations that better predict the effects of multiple scattering as well as develop 2D empirical models. Increasingly, monitoring needs require both local and broad-area regional to far-regional calibration, usually in complex regions where we observe frequency-dependent phase blockage. For example, regions of the Middle East and Central Asia, including Iran, present strong 2D variations in attenuation and phase blockage effects, and we must adjust to the dominant coda type on the fly. The recent North Korean nuclear tests illustrate that even a seemingly simple region requires 2D corrections for L_g -coda.

INTRODUCTION

The regional shear-wave coda methodology has evolved over time; originally inspired by the local single-scattering model of Aki (1969), the method has undergone some recent modification but is mostly used under the assumption of a 1D, radially symmetric Earth centered on each station. The methodology has had great success at local and near-regional distances for simple regions, for crustal *S* transitioning to L_g coda types, and at longer distances for small source regions such as test sites and aftershock zones, using codas associated with *P*, S_n or L_g , depending on the dominant coda type for each individual path. Despite recent successes in small-scale 1D coda calibrations, there are a number of reasons to make significant enhancements to the coda methodology to encompass laterally complex regions. This project is timely because the use of the 1D coda has been implemented in a number of small regions of interest; however, there is a need to extend to the broader regions, which have larger lateral complexity. Regions that have been calibrated under the 1D assumption (Mayeda et al., 2003) have either been small and/or uniformly complicated (e.g., Yellow Sea/Korean Peninsula (YSKP); Bhuj, India; Kuwait; the eastern Mediterranean; northern Italy; and northern California) or broad regions that are more or less uniform (e.g., European Arctic, Turkey, South Africa). In each of the above-mentioned cases, we recognize that performance was limited mostly by oversimplified parameterization and that better results could have been obtained. For example in the YSKP region, calibration to the east of the peninsula requires completely different velocity, coda shape, and attenuation corrections because the path is dominated by oceanic S_n propagation, whereas the YSKP is composed of L_g continental propagation. In fact, the recent North Korean tests illustrate this point, as we found partial blockage for paths towards the south because of short (but significant) propagation through the oceanic crust that reduced broadband amplitudes by a factor of

nearly 2-to-3 on the L_g coda. This effect was critical for yield estimation work and will be equally critical in other areas of low crustal Q and L_g blockage, such as Iran. For example, Turkey is geophysically complicated, but for lower frequencies, between 0.05 and ~1 Hz, the whole country can be treated as if it were homogeneous (e.g., Eken et al., 2004). However, for the higher frequencies, 2D corrections are required for path corrections, envelope shapes (due to varying S_n and L_g levels and subsequent coda), and peak envelope velocity.

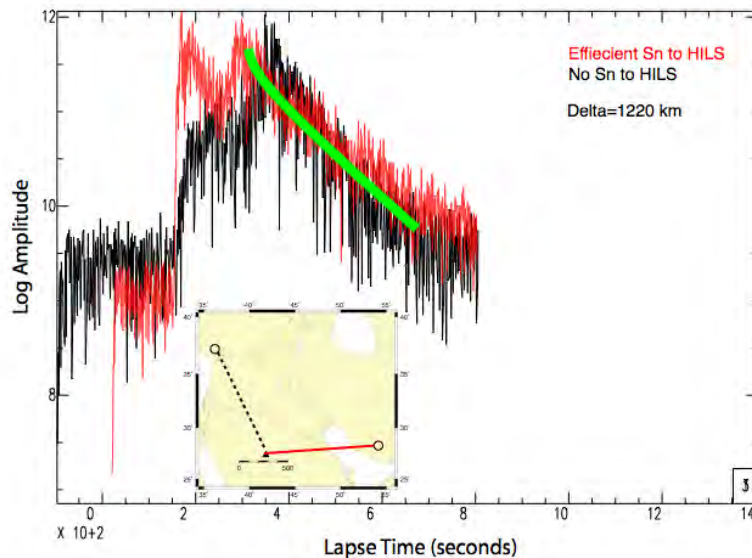


Figure 1. Middle East example of 2.0–3.0-Hz envelopes for two events recorded at station HILS in Saudi Arabia. The event from south-central Turkey has L_g coda whereas the event from southern Iran has S_n coda. A simple 1D calibration for this region would introduce significant error because velocity, shape, and path effects are different.

With regard to Asia and the Middle East, we are also faced with mixing of phase types in addition to strong lateral changes in attenuation. We need to improve the coda method so that it is general enough to handle any region, including those that have lateral changes in phase type and/or blockage. This will require enhancing all aspects of coda calibration to full 2D. Figure 1 illustrates such a case: two events recorded by station HILS located in Saudi Arabia. For one event there is clear L_g and associated coda, whereas the path from southern Iran has only S_n and its coda. Spatial and/or azimuthally varying parameters will be required to account for this since a 1D approach will introduce error. Even small error is intolerable as we are going to extra effort to calibrate coda in order to take advantage of the higher accuracy and precision relative to direct wave methods.

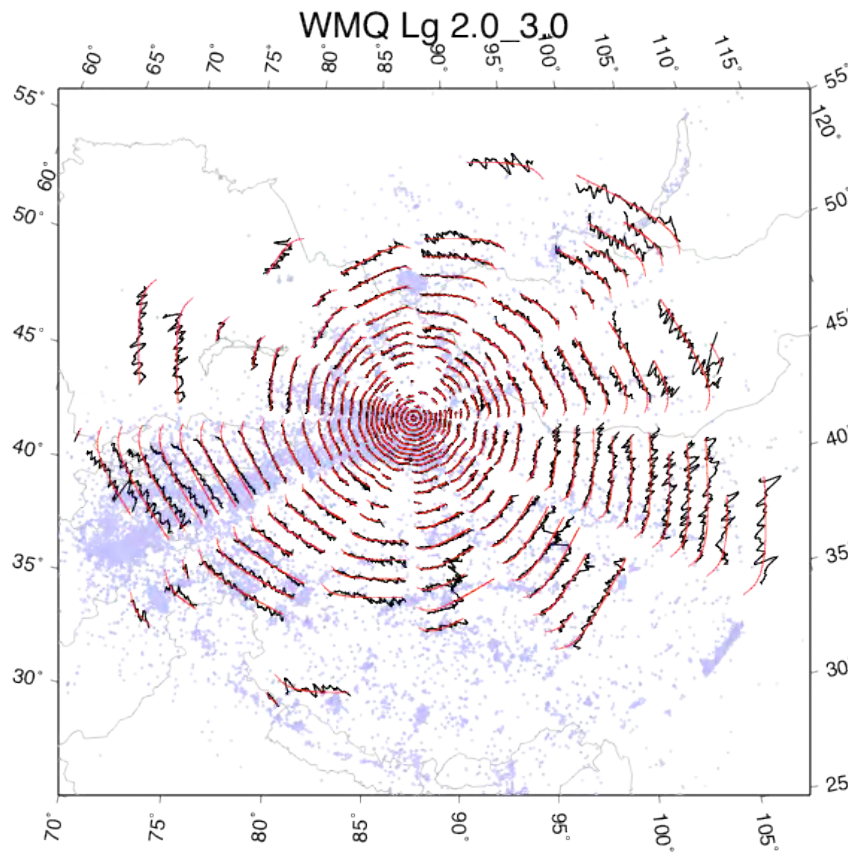


Figure 2. Radially and distance-dependent envelopes are shown for station WMQ. Black envelopes are the result of stacking in bins, and the red lines are synthetic fits. This region is particularly complicated and highlights the need for 2D coda calibration.

In addition to the azimuthal variation shown in Figure 1, in Figure 2 we show 2.0–3.0-Hz coda stacks for station WMQ as a function of both distance and azimuth. Stacking was performed for events in azimuth-distance bins, and results are plotted at each bin center. Coda stacks are plotted in polar format, with time increasing tangentially counterclockwise and amplitude increasing radially inward. Axes are not shown. Fits for a distance-dependent coda shape model for broad-area Asia are plotted in red. Event distribution is shown in the background. Note the smooth stacks in areas of high event density. Two-dimensional variations can be seen in the model fits. Tien Shan codas are shallower than the model predicts and thus experience lower attenuation, possibly due to influence of the Tarim basin and Kazakh platform. Codas from the southeast are steeper than the model, reflecting higher attenuation along those azimuths.

The motivation for making a change to the methodology is quite simple. First, regions of monitoring interest are rarely tectonically simple, and in fact, most appear to require 2D corrections for velocity, path, and envelope function. Figure 3 shows a result of coda wave Q for central Asia (Q from amplitude decrease with distance, rather than temporal decay of coda) and illustrates the strong lateral changes that need to be accounted for. The partial blockage for paths from the Korean test can be seen in the Q map, although the smoothness enforced on this large-scale result decreases its effectiveness for such short paths.

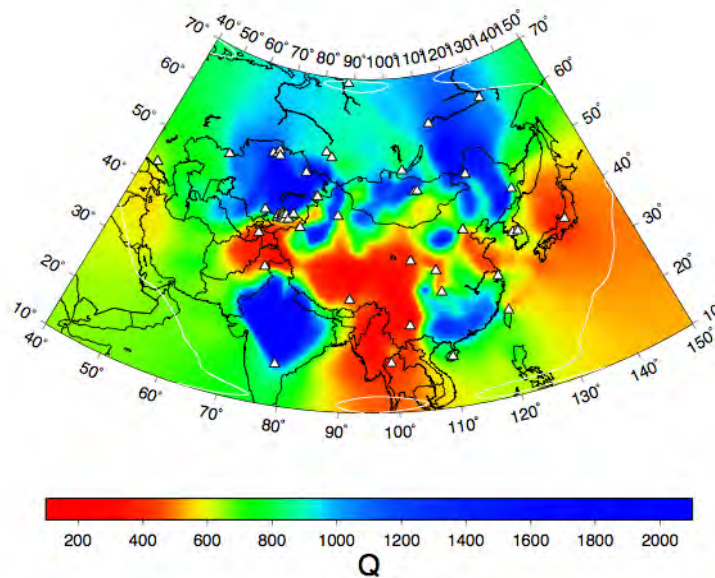


Figure 3. Coda wave apparent Q for central Asia for the 0.7–1.0-Hz band. This 2D inversion was performed over a very broad region and emphasizes the need for 2D path corrections. Stations are represented by triangles, and a liberal model error ($1/Q$) indicating ray-path coverage is represented by the white contour. Q becomes poorly resolved as the coverage contour is approached. Note: Coda-wave apparent Q is not to be confused with coda Q as defined by Aki (1969).

CONCLUSIONS AND FUTURE WORK

The project objectives are straightforward and can be broken down into two parts. First, we will transition the 1D coda methodology to a full 2D capability, including both P -coda and S -coda, including the ability to account for frequency-dependent phase blockage, as well as 2D variations in peak envelope velocity and site-transfer corrections. Second, we will improve upon the way we make amplitude measurements and tie to an absolute scale. This will include improved synthetic envelope functions and fitting, which to date have been overly simplified using a model derived for a homogeneous full-space (i.e., the single-scattering model).

Aside from some preliminary project planning that has taken place during this current year, we summarize our project tasks. Our plan is to improve the coda methodology by upgrading models and transitioning to full 2D for both P -coda and S -codas. For example, the parameterization of the synthetic envelopes has been based on a simplistic single-scattering formulation for a homogeneous full-space. We plan on testing multiple scattering formulations as well as developing other empirical models. In addition, ad hoc 1D path corrections were developed, mostly because the regions of study were relatively small and/or had P_n -codas, S_n -codas, or L_g -codas, but not a mixture. Increasingly however, monitoring needs require both local and broad-area regional to far-regional calibration, usually in complex regions where we observe frequency-dependent phase blockage.

We are leveraging existing data holdings at both institutions and also use new results that stem from local background coda models, earthquake source scaling studies, and more-sophisticated scattering models in the literature.

The are our planned tasks for this project:

- (1) Evaluate error improvement when we account for 2D variations in coda type for both P - and S -codas. This will involve developing and testing methods that account for multiple coda types in the 2D sense.

- (2) Evaluate error improvement when we change from 1D to 2D for peak envelope velocity. This will initially involve a 1D background model of peak velocity, then using 2D corrections that are obtained either through a 2D tomography or station-centric lookup table. We will evaluate both approaches and make recommendations based on error.
- (3) Evaluate error improvement when we change from 1D to 2D for envelope shape. Again, we will have a 1D background model, then test tomography and station-centric lookup methods for exponential decay (*b*) and spreading terms that describe coda shape. This is similar to what we plan to do for peak envelope velocity in (2).
- (4) Evaluate advanced 1D models for envelope shape that account for multiple scattering or shifts to mantle coda with increased lapse time. There are a number of theoretical formulations in the literature that model scattering mean-free-path changing as a function of depth as well as multiple scattering models in 1D varying velocity structure.
- (5) Blend 2D calibrations for *P*- and *S*-coda from central and east Asia networks with Middle East calibrations. Our goal is to have a seamless calibration that is consistent with Knowledge Base deliveries from one year to the next and that allows for re-calibration when new stations and waveform data become available.
- (6) Evaluate error improvement transitioning from 1D to 2D coda transfer function corrections (i.e., empirical Green's function). We will test tomography methods that invert for source-region specific transfer functions. For example, the *P*-to-coda and *S*-to-coda transfer functions may be region specific due to crustal structural variations (e.g., impedance contrast and scattering efficiency differences from one source region to the next).
- (7) Evaluate error improvement using theoretical source models as calibration events versus the empirical Green's function approach outlined in Mayeda et al., (2003).

REFERENCES

- Aki, K. (1969). Analysis of the seismic coda of local earthquakes as scattered waves, *J. Geophys. Res.* 74: 615–631.
- Eken, T., K. Mayeda, A. Hofstetter, R. Gök, G. Örgülü, and N. Turkelli (2004). An application of the coda methodology for moment-rate spectra using broadband stations in Turkey, *Geophys. Res. Lett.* 31:11, L11609.
- Mayeda, K., A. Hofstetter, J. L. O'Boyle, and W. R. Walter (2003). Stable and transportable regional magnitudes based on coda-derived moment-rate spectra, *BSSA* 93: 224–239.

DISTRIBUTION LIST

DTIC/OCP 8725 John J. Kingman Rd, Suite 0944 Ft Belvoir, VA 22060-6218	1 cy
AFRL/RVIL Kirtland AFB, NM 87117-5776	2 cys
Official Record Copy AFRL/RVBYE/Robert Raistrick	1 cy