



NAVAL
POSTGRADUATE
SCHOOL



The Nonhydrostatic Unified Model of the Atmosphere (NUMA): CG Dynamical Core

Frank Giraldo

Department of Applied Mathematics

Naval Postgraduate School

Monterey CA 93943

<http://faculty.nps.edu/projects/NUMA>

Report Documentation Page

Form Approved
OMB No. 0704-0188

Public reporting burden for the collection of information is estimated to average 1 hour per response, including the time for reviewing instructions, searching existing data sources, gathering and maintaining the data needed, and completing and reviewing the collection of information. Send comments regarding this burden estimate or any other aspect of this collection of information, including suggestions for reducing this burden, to Washington Headquarters Services, Directorate for Information Operations and Reports, 1215 Jefferson Davis Highway, Suite 1204, Arlington VA 22202-4302. Respondents should be aware that notwithstanding any other provision of law, no person shall be subject to a penalty for failing to comply with a collection of information if it does not display a currently valid OMB control number.

1. REPORT DATE MAR 2011		2. REPORT TYPE		3. DATES COVERED 00-00-2011 to 00-00-2011	
4. TITLE AND SUBTITLE The Nonhydrostatic Unified Model of the Atmosphere (NUMA): CG Dynamical Core				5a. CONTRACT NUMBER	
				5b. GRANT NUMBER	
				5c. PROGRAM ELEMENT NUMBER	
6. AUTHOR(S)				5d. PROJECT NUMBER	
				5e. TASK NUMBER	
				5f. WORK UNIT NUMBER	
7. PERFORMING ORGANIZATION NAME(S) AND ADDRESS(ES) Naval Postgraduate School, Department of Applied Mathematics, Monterey, CA, 93943				8. PERFORMING ORGANIZATION REPORT NUMBER	
9. SPONSORING/MONITORING AGENCY NAME(S) AND ADDRESS(ES)				10. SPONSOR/MONITOR'S ACRONYM(S)	
				11. SPONSOR/MONITOR'S REPORT NUMBER(S)	
12. DISTRIBUTION/AVAILABILITY STATEMENT Approved for public release; distribution unlimited					
13. SUPPLEMENTARY NOTES NUMA Highlights Briefing, March 2011					
14. ABSTRACT					
15. SUBJECT TERMS					
16. SECURITY CLASSIFICATION OF:			17. LIMITATION OF ABSTRACT	18. NUMBER OF PAGES	19a. NAME OF RESPONSIBLE PERSON
a. REPORT	b. ABSTRACT	c. THIS PAGE			
unclassified	unclassified	unclassified	Same as Report (SAR)	25	

Collaborators/Acknowledgements

- Luca Bonaventura, Applied Math, Polytechnic Univ. of Milan
- Les Carr, Applied Math, NPS
- Emil Constantinescu, Argonne National Laboratory
- James Doyle, NRL Monterey
- Saša Gaberšek, NRL Monterey
- Shiva Gopalakrishnan, Applied Math, NPS
- Jim Kelly, Applied Math, NPS
- Matthias Läuter, Frei University of Berlin /Konrad Zuse High-Performance Computing Center
- Simone Marras, Barcelona Supercomputing Center

Sponsors:

- ONR (Battlespace Environments and Computational Math)
- AFOSR (Computational Math)



Overview of Existing Global Models

Model	Organization	Spatial Discretization	Grid Type	Time-Integrator
Unified Model (NH)	UK Met Office	Finite Difference (2 nd order)	Structured (lat-lon)	Semi-Implicit/ Semi-Lagrangian
FIM (Hydrostatic)	ESRL NOAA	Finite Volume (2 nd order)	Icosahedral	Explicit
MPAS (NH)	NCAR	Finite Difference (2 nd order)	Unstructured (hexagons only)	Split-Explicit
NUMA (NH)	NPS/NRL	Spectral Elements/ Disc. Galerkin (arbitrary order)	Unstructured (any grid)	Semi-Implicit: 3D and 1D Vertical

Design Philosophy (2)

Unified Dynamics

- All limited-area models are nonhydrostatic. Resolutions of global models are approaching the nonhydrostatic limit (~10 km).
- Both limited-area and global models utilize the same equations.
- Engineer a common dynamical core for both models, then change grids, force, and boundary conditions.

Unified Numerics

- CG is more efficient for smooth problems at low processor counts.
- DG is more accurate for problems with sharp gradients and more efficient at high processor counts.
- Both EBGs utilize a common mathematical arsenal.
- NUMA allows the user to choose either CG or DG for the problem at hand.

Unified Code

- Code is *modular*, with a common set of data structures.
- New time-integrators, grids, basis functions, physics, etc. may be swapped in and out with ease.
- Code is portable: Successfully installed on Apple, Sun, Linux, and IBM.

Non-Conservative Form (2NC)

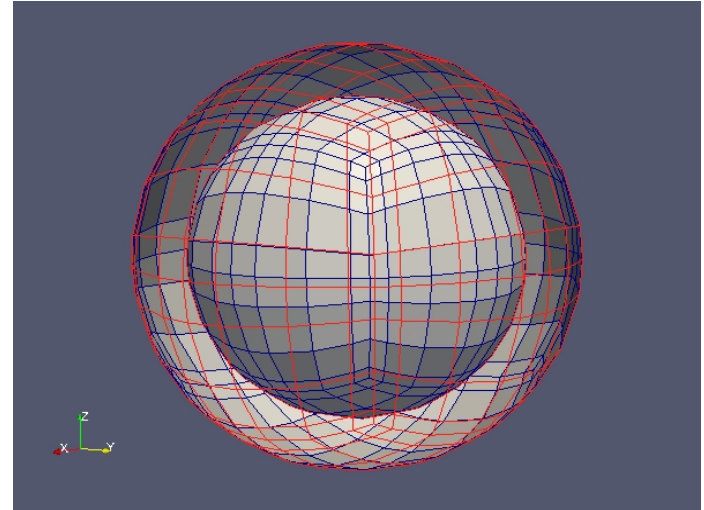
- Consider the compressible Euler in Cartesian coordinates (not spherical).
- Mass is conserved and energy can be conserved (up to time-truncation)

$$\frac{\partial \rho}{\partial t} + \nabla \cdot (\rho \mathbf{u}) = 0$$

$$\frac{\partial \mathbf{u}}{\partial t} + \mathbf{u} \cdot \nabla \mathbf{u} + \frac{1}{\rho} \nabla P + g \hat{\mathbf{k}} + \mathbf{f} \times \mathbf{u} = 0$$

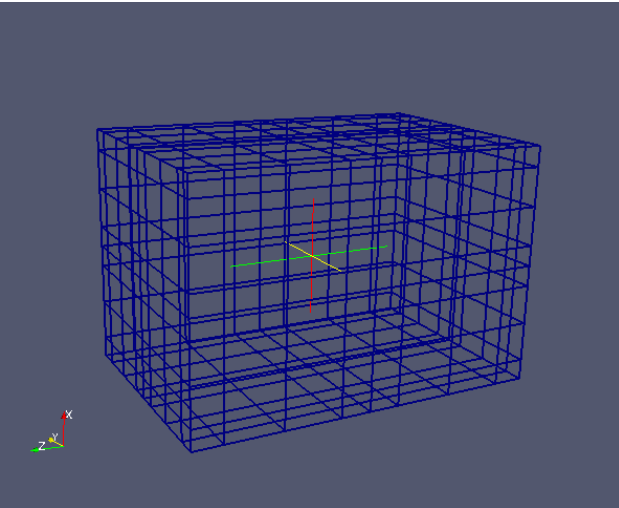
$$\frac{\partial \theta}{\partial t} + \mathbf{u} \cdot \nabla \theta = 0$$

$$P = P_A \left(\frac{\rho R \theta}{P_A} \right)^\gamma$$

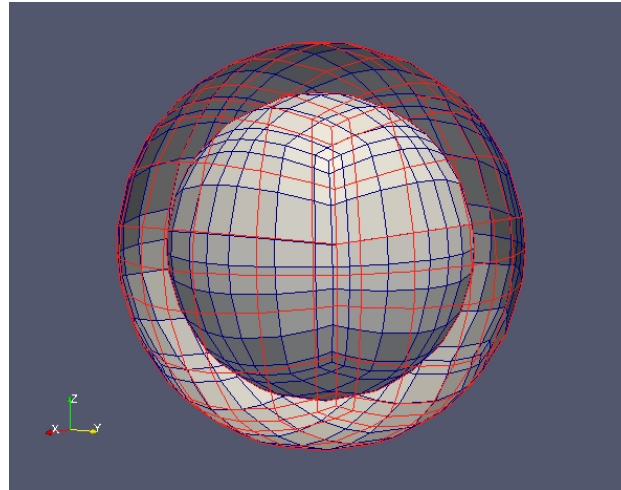


- The same model may be used for: global, limited-area, and urban-scale modeling (requires different grids, initial conditions, boundary conditions, and physics).

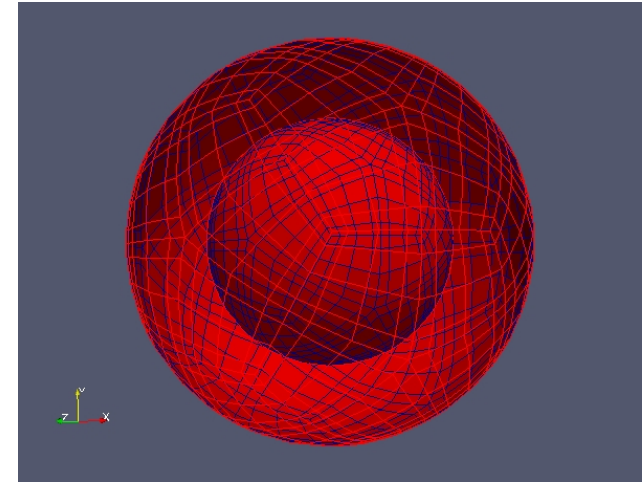
Example of 3D Grids



Mesoscale Modeling Mode



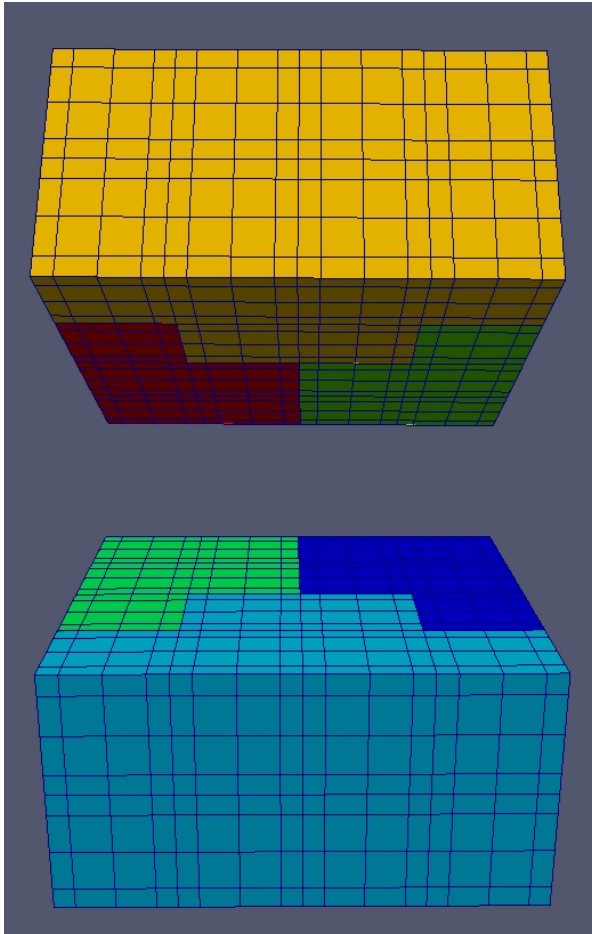
**Global Modeling Mode
(Cubed-Sphere)**



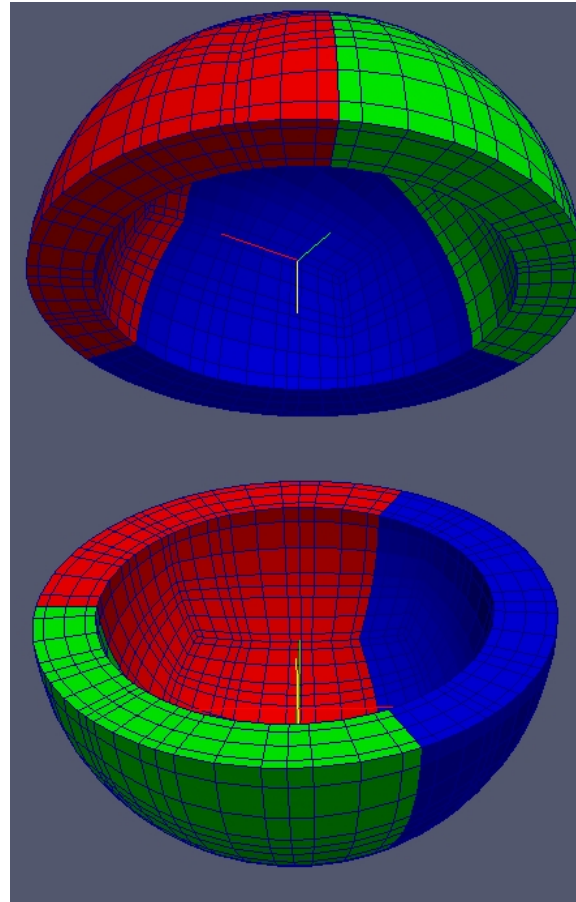
**Global Modeling Mode
(Icosahedral)**

- NUMA runs in either Mesoscale (Limited-Area) or Global Mode.
- Currently, any (hexahedra-based) grid can be used including completely unstructured grids.
- Parallel Domain Decomposition handled by METIS.

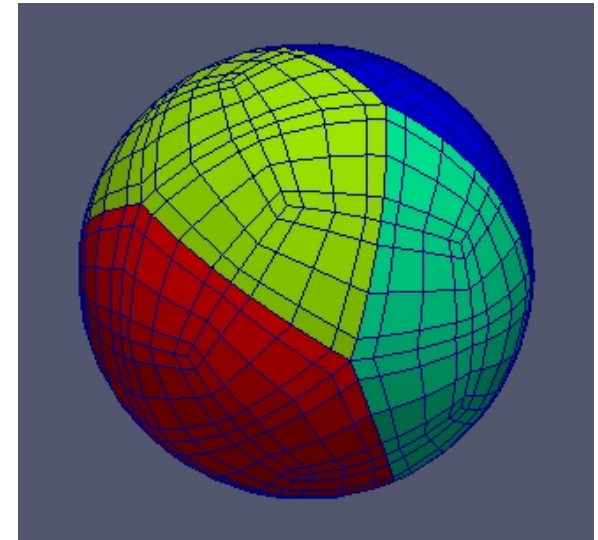
Domain Decomposition via METIS



1: Decomposition of a 3D Cartesian domain using 64 spectral elements (fourth order).



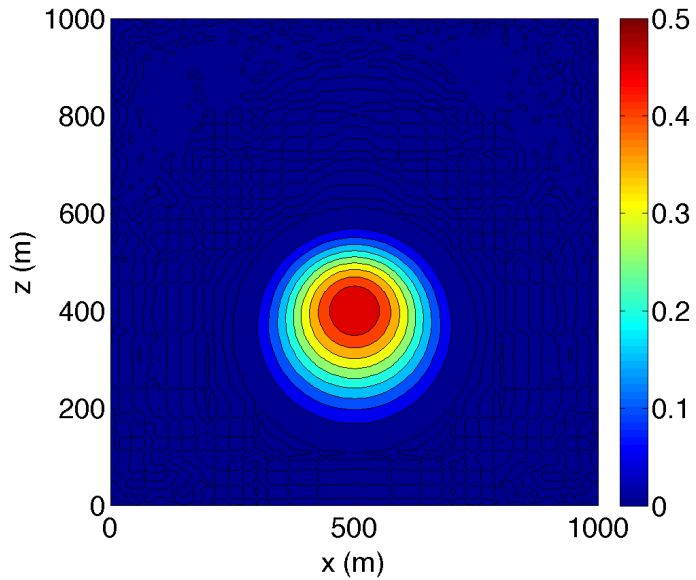
2: Decomposition of a "cubed sphere" using 96 spectral elements (fourth order).



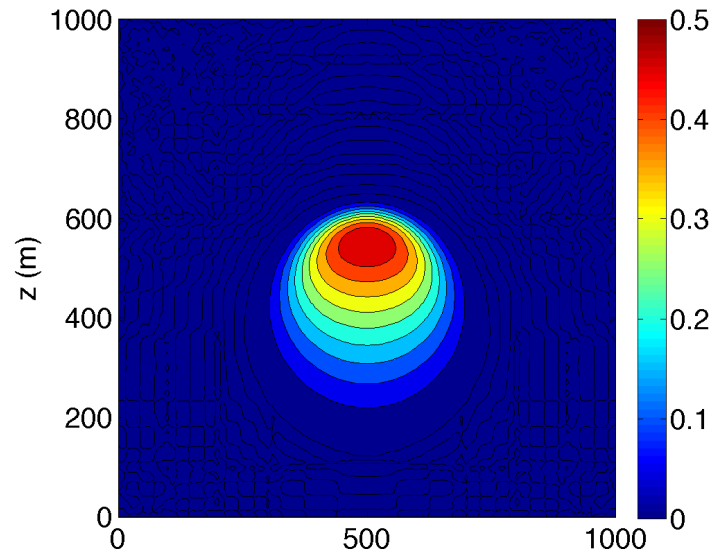
3: Decomposition of an "icosahedral sphere" using 96 elements (fourth order).

Rising Thermal Bubble: 3D

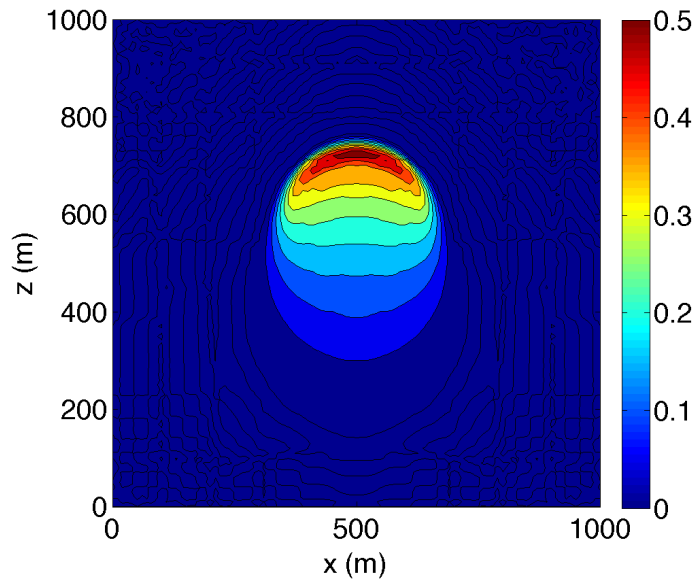
time = 100 s



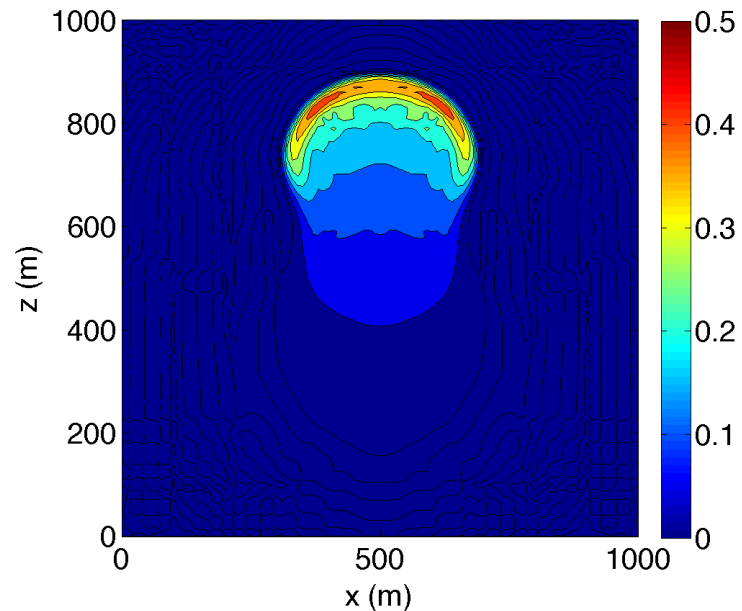
time = 200 s



time = 300 s

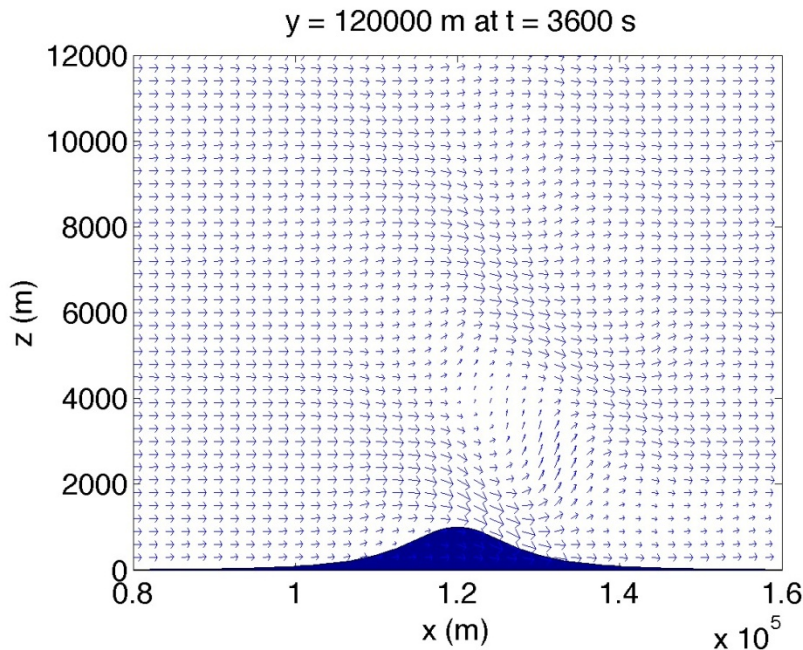


time = 400 s

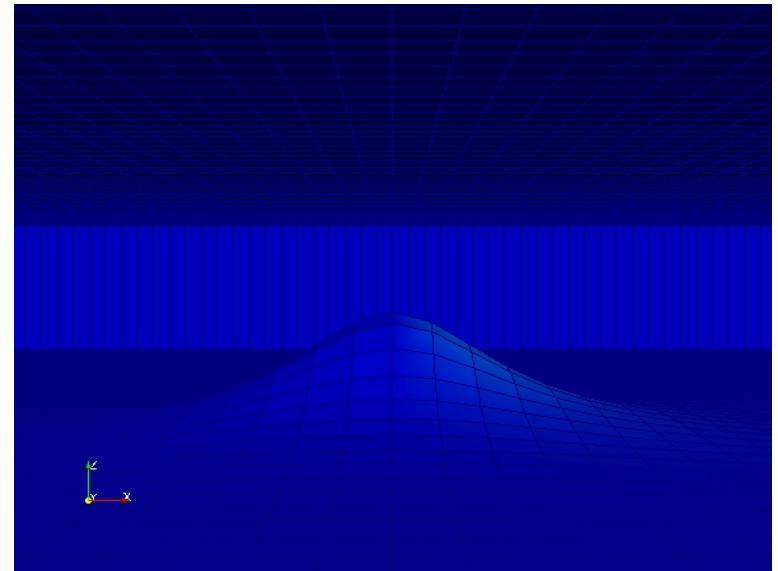


Orographic Flows: Linear Hydrostatic and Nonhydrostatic Mountain (3D)

- Flow of $U=20$ m/s in an isothermal atmosphere.
- LH Mountain: Solid of revolution of Witch of Agnesi: Mountain height = 1 m with radius 10 km.
- Radiating boundary condition implemented on lateral and top boundaries using an absorbing sponge (Rayleigh friction).



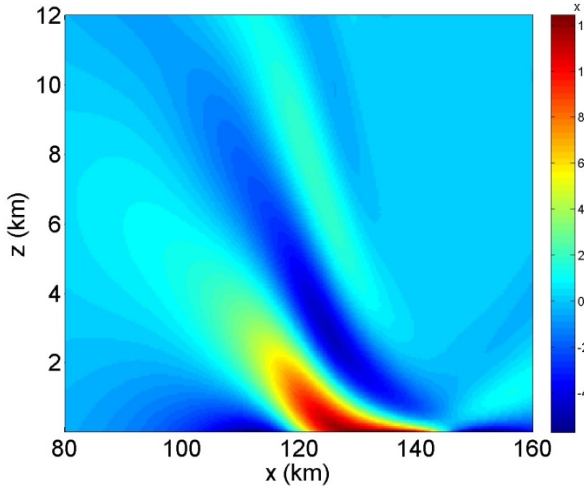
Non-Hydrostatic Mountain



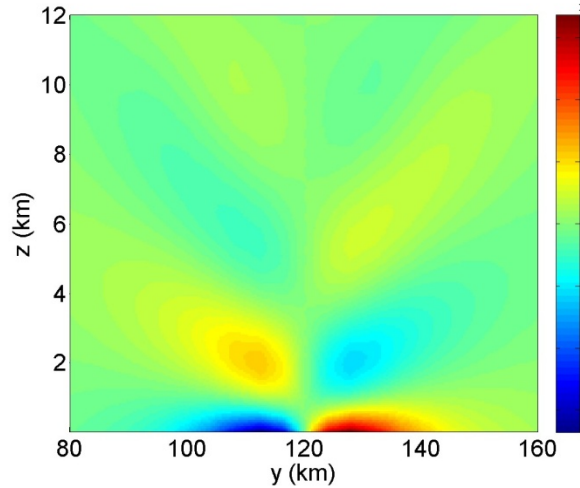
LH Mountain

Linear Hydrostatic Mountain (3D)

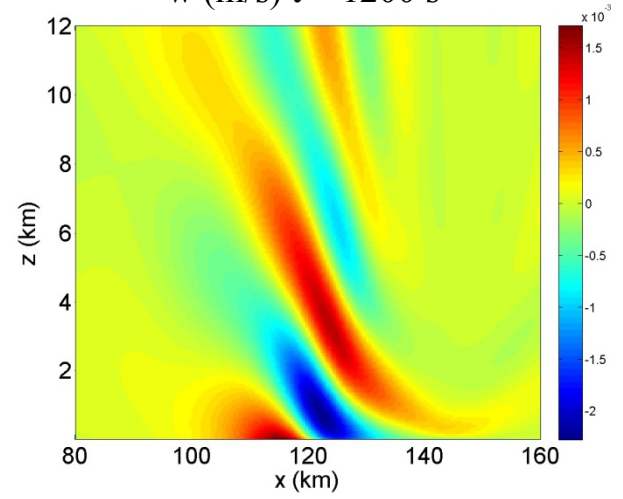
u (m/s) t = 1200 s



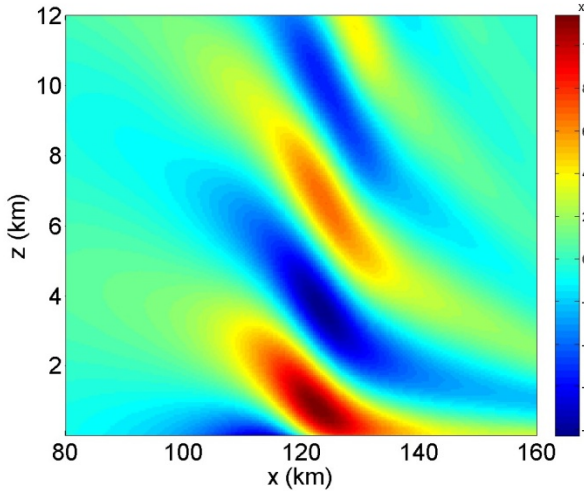
v (m/s) t = 1200 s



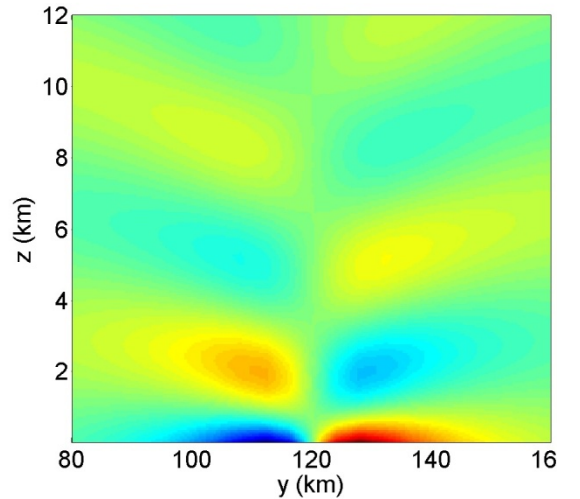
w (m/s) t = 1200 s



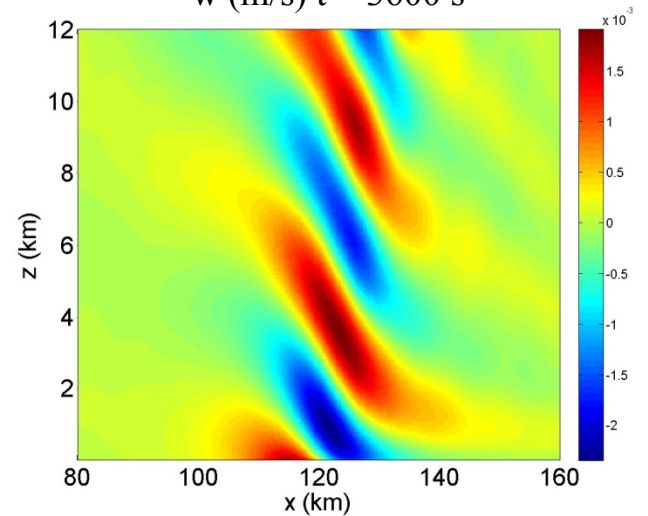
u (m/s) t = 3600 s



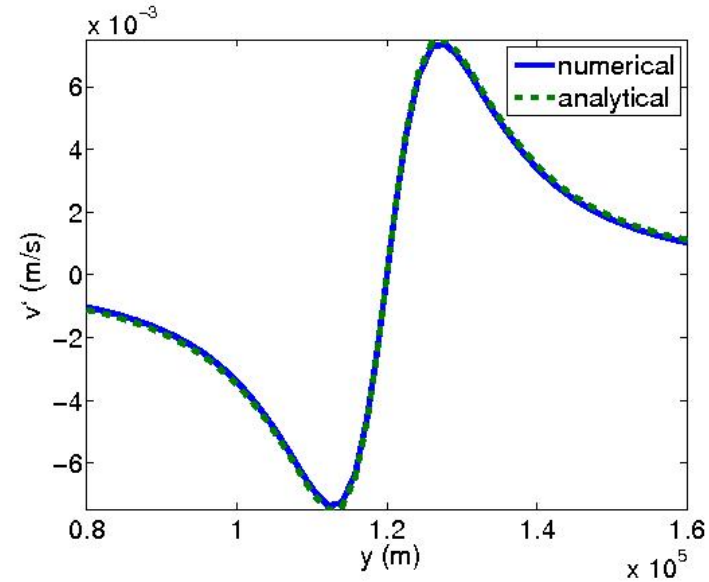
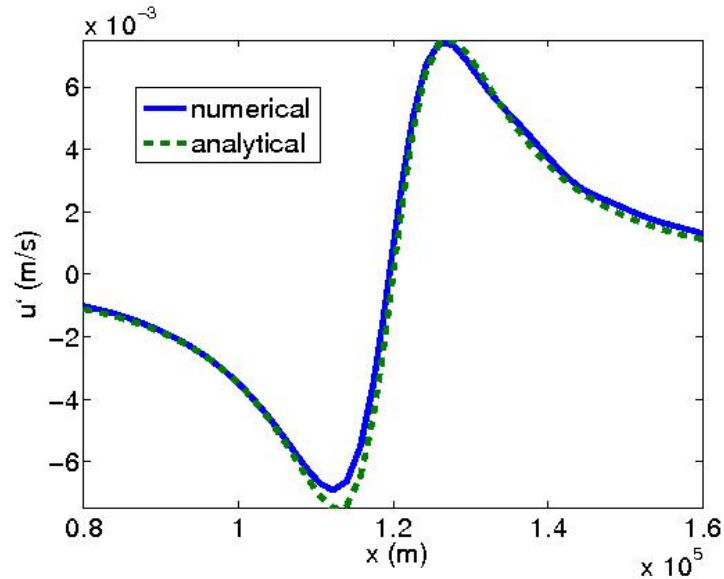
v (m/s) t = 3600 s



w (m/s) t = 3600 s



3D Linear Hydrostatic Mountain (Verification)



- Mountain case tests orography and sponge BC.
- Analytical approximations for flow over a LHM available in Smith (1980) on mountain surface.
- Decent agreement between theory and numerical model for downstream and cross-stream velocity perturbations.

Results (Global): Pressure Wave

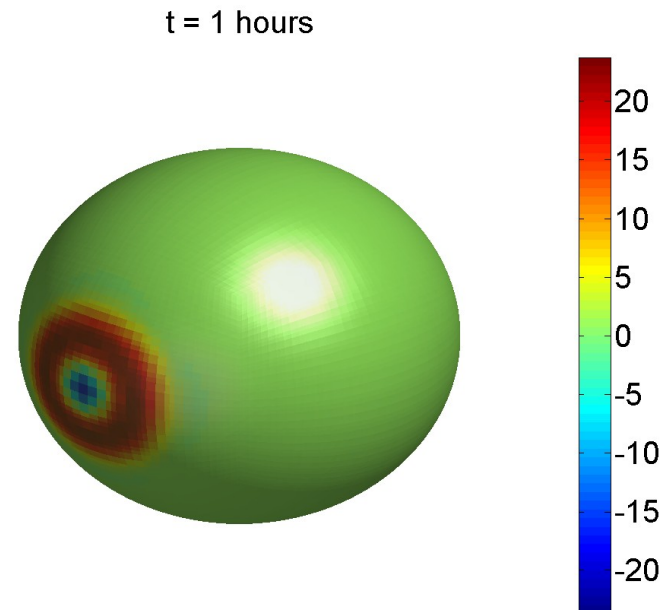
- Proposed by Tomita and Satoh (2004) to test nonhydrostatic global atmospheric models.
- A pressure perturbation is applied to a hydrostatic, isothermal atmosphere
- Top Level $z_T=10$ km
- Cubed Sphere Grid with $6 \times 12 \times 12 \times 6 = 5184$ elements using 4th order polynomials (~210 km horz. Resolution and 0.5 km vertical resolution)
- Model run using Semi-Implicit TI w/ 5 s time-step

$$p' = \Delta p f(\lambda, \phi) g(z)$$

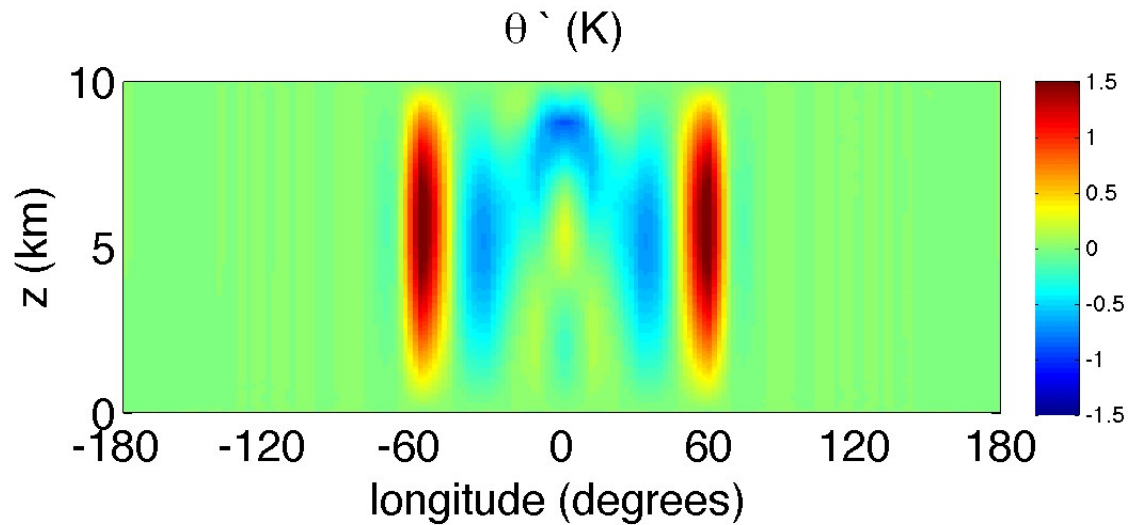
$$f(\lambda, \phi) = \frac{1}{2} H(R-r) \left[1 + \cos\left(\frac{\pi r}{R}\right) \right]$$

$$r = a \cos^{-1}(\cos \phi \cos \lambda)$$

$$g(z) = \sin\left(\frac{\pi z}{z_T}\right)$$

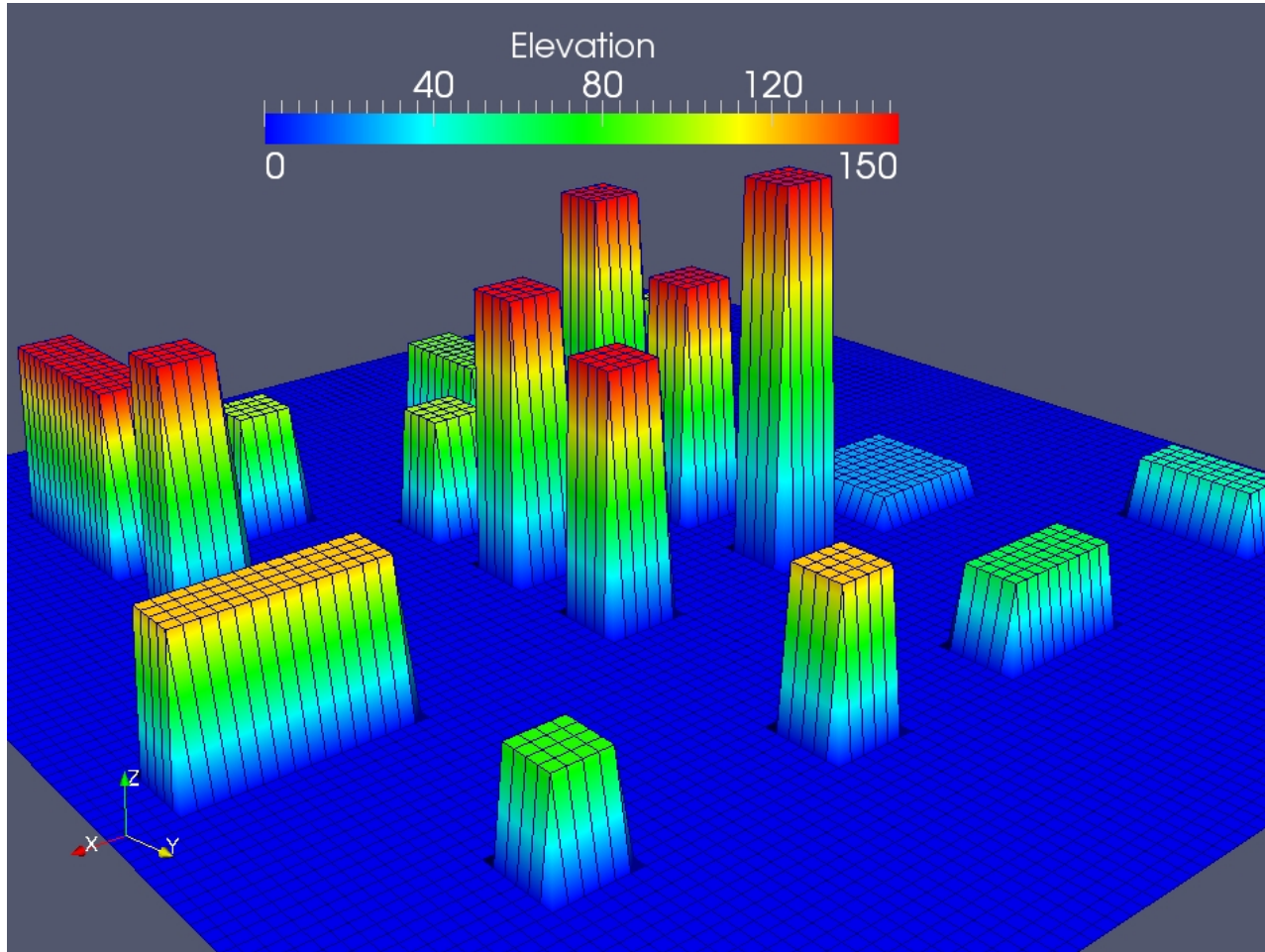


Results (Global): Inertia-Gravity Wave

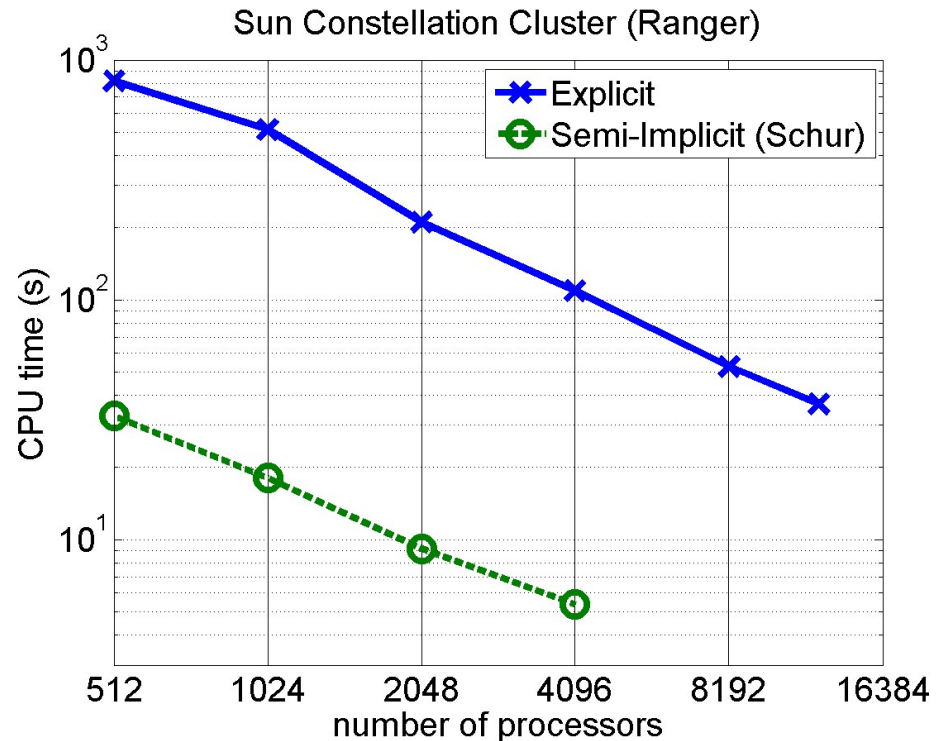
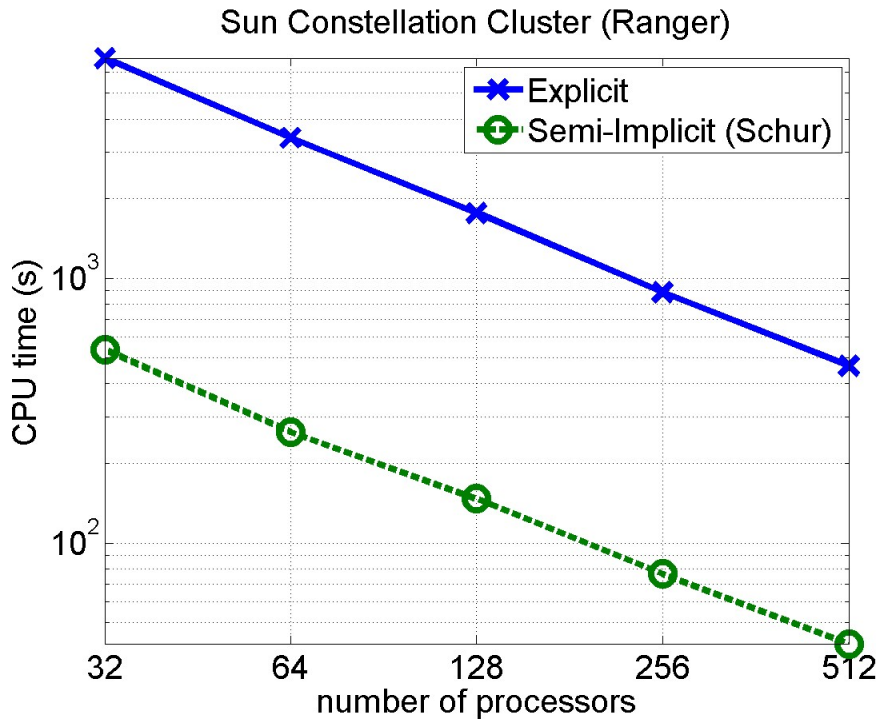


Potential Temperature after 48 hours
with (240x0.5) km resolution

Urban-Scale Modeling



CG: Scalability (Explicit + Semi-Implicit)



Moderate Processor Counts: 110592
elements

Large Processor Counts:
262144 elements

Time-Steps

Explicit RK35: $\Delta t = 0.001$ s

SI BDF2: $\Delta t = 0.01$ s

Summary and Outlook

- NUMA Dynamical Core is quite mature:
 - 3D and MPI .
 - Can use either CG or DG methods.
- We will continue testing the dry dynamics and improve the model to make it as user-friendly as possible.
- Future Projects:
 - We are implementing sub-grid scale parameterizations to NUMA
 - Need more resources added to implement sub-grid scale parameterization, data assimilation, testing, etc.

Backup Slides

Conservative Form (2C)

- Mass is conserved but not energy.
- Conservation (or flux) form is required by DG machinery.

$$\frac{\partial \rho}{\partial t} + \nabla \cdot \mathbf{U} = 0$$

$$\frac{\partial \mathbf{U}}{\partial t} + \nabla \cdot \left(\frac{\mathbf{U} \otimes \mathbf{U}}{\rho} + P \mathbf{I} \right) + \rho g \hat{\mathbf{k}} + \mathbf{f} \times \mathbf{U} = 0$$

$$\frac{\partial \Theta}{\partial t} + \nabla \cdot \left(\frac{\Theta \mathbf{U}}{\rho} \right) = 0$$

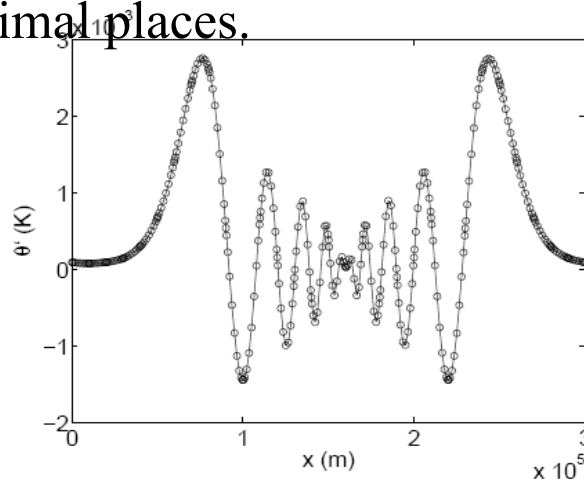
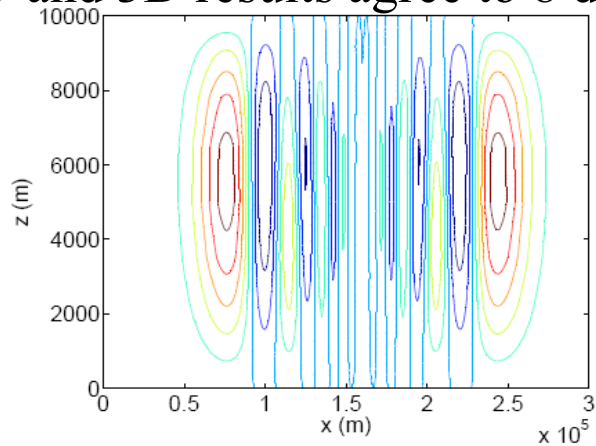
$$P = P_A \left(\frac{R\Theta}{P_A} \right)^\gamma$$

$$\mathbf{U} = \rho \mathbf{u}$$

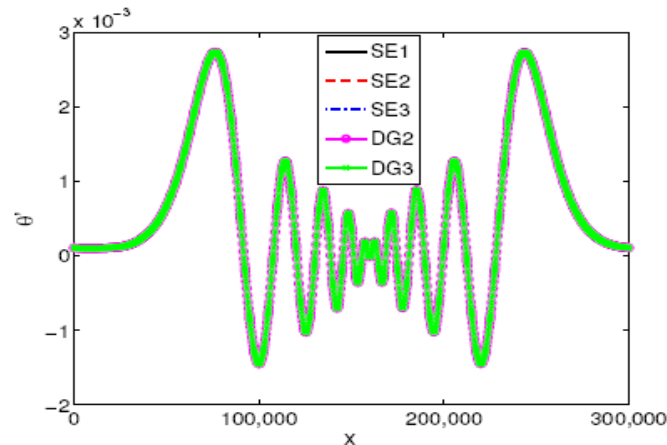
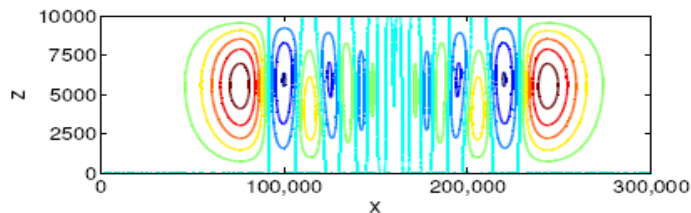
$$\Theta = \rho \theta$$

2D Inertia-Gravity Wave

- Standard test suite for 2D mesoscale problems (Skamarock, Doyle, et. al.)
- Potential temperature perturbation after 3000 s for 250 m resolution (120 by 1 by 4 elements) and 10-th order polynomials.
- 2D and 3D results agree to 8 decimal places.

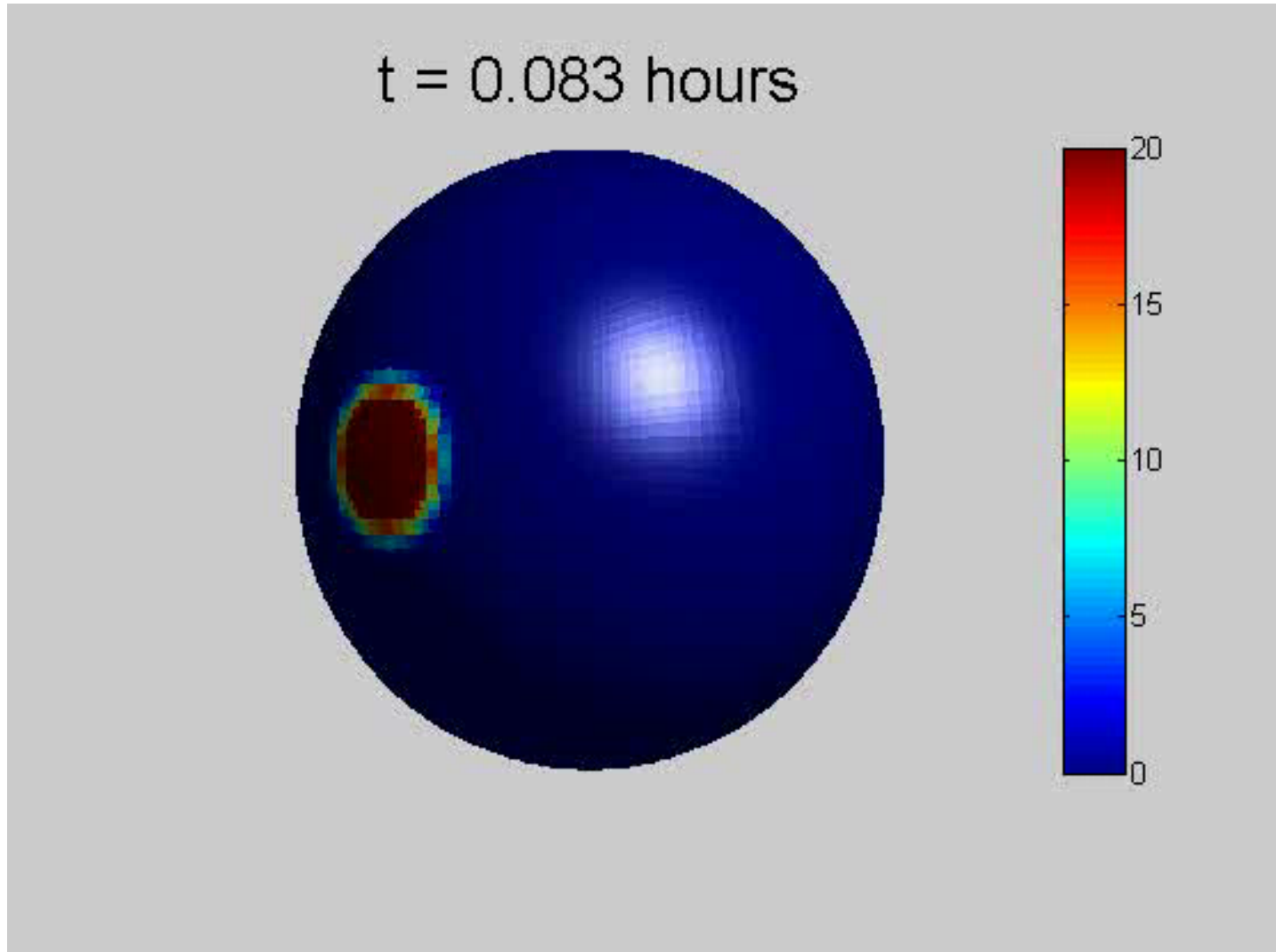


CG-NUMA
run with 1
element in y-
direction.



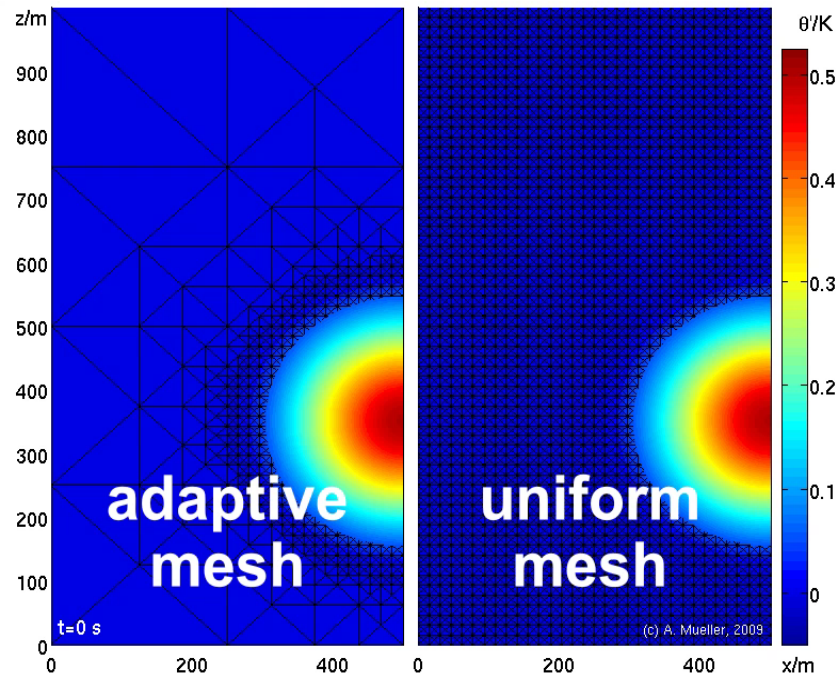
2D Density
Current
results for
Giraldo and
Restelli
(2008).

Results (Global): Pressure Wave

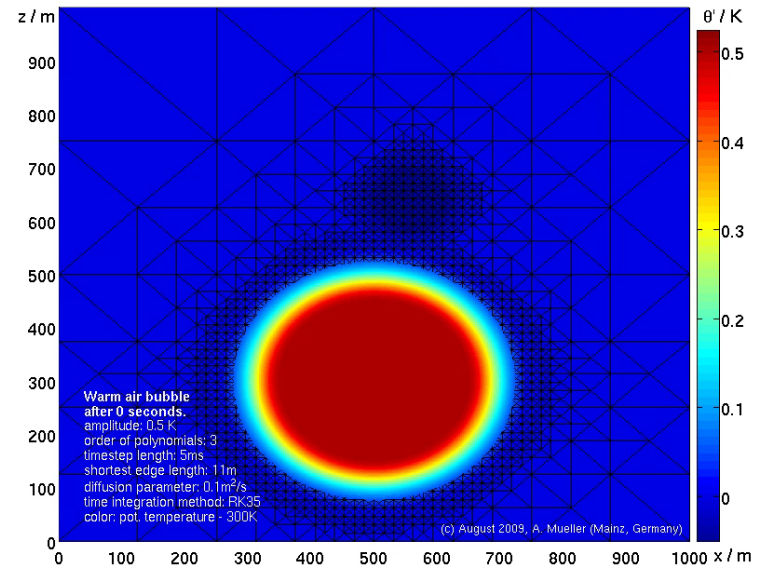


- Acoustic (perturbation) field shown at central vertical level (5 km).
- Wave returns to initial state after about 32 hours, yielding a speed of sound of 348 m/s.

Non-hydrostatic Adaptivity Examples (Müller, Behrens, Giraldo, Wirth 2010)

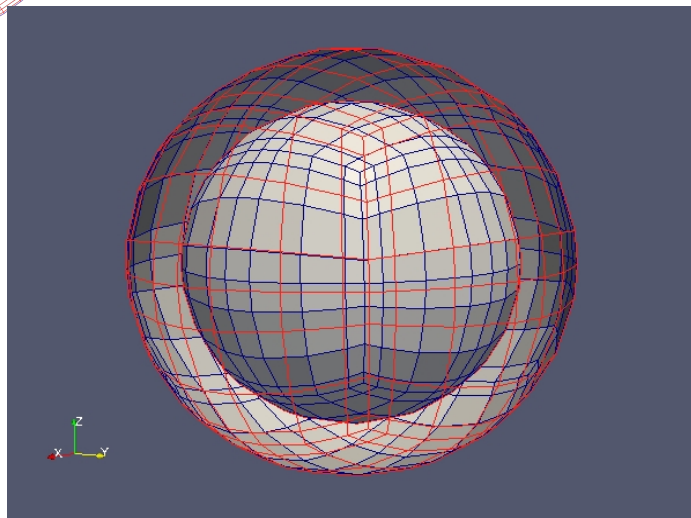
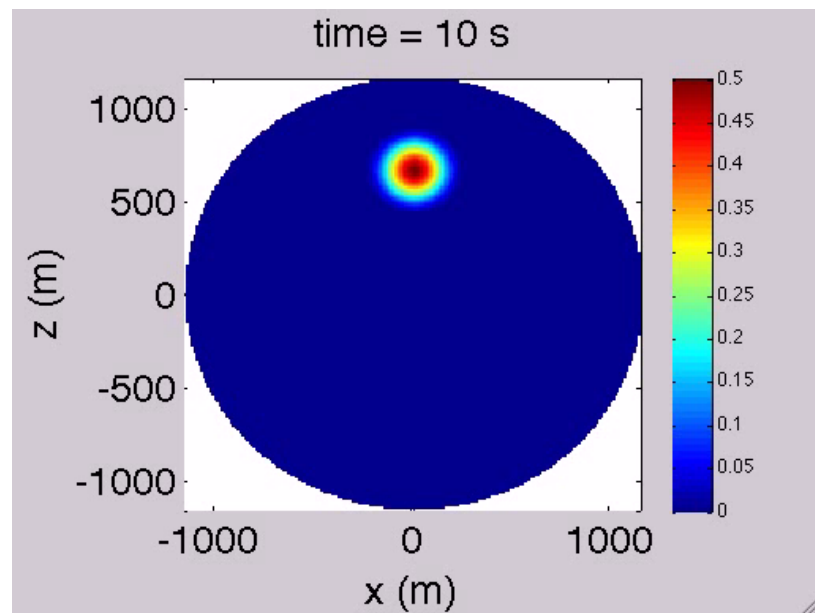
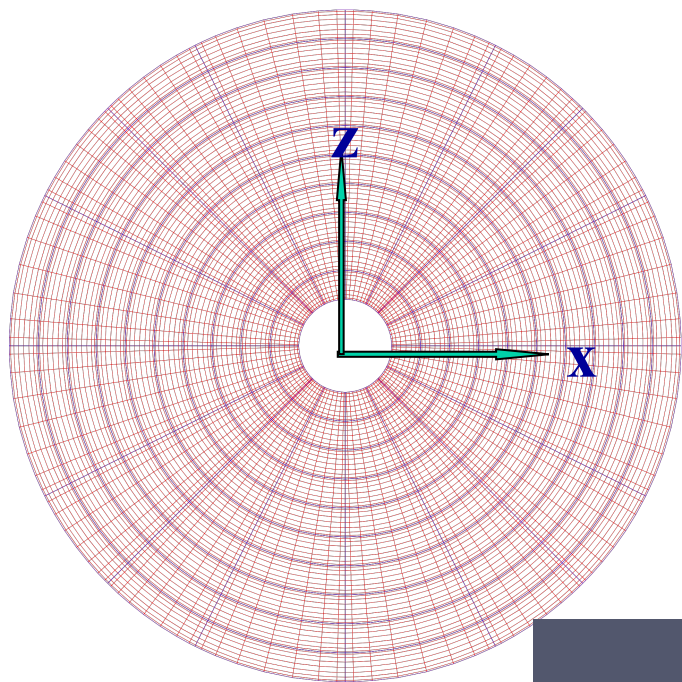


Rising Thermal Bubbles



Two (Warm/Cold) Thermal Bubbles

Rising Thermal Bubble (Global)



Overview of Existing Limited-Area Models

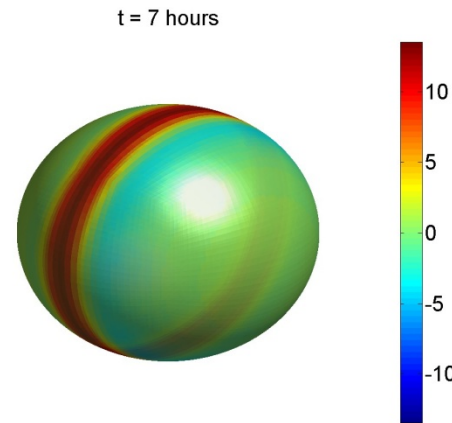
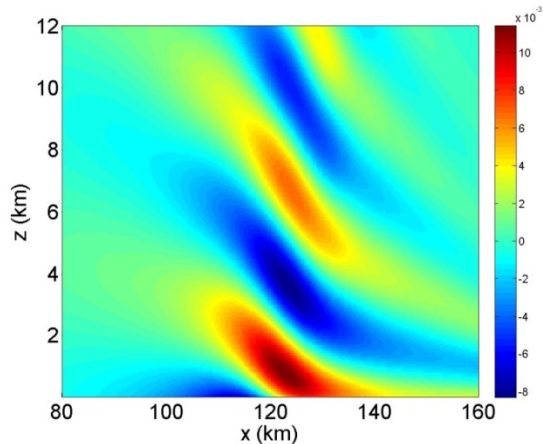
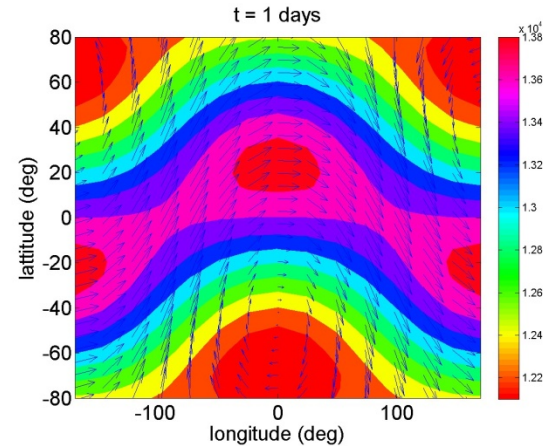
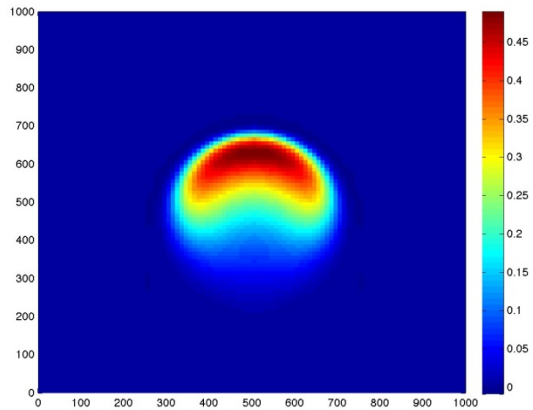
Model	Organization	Spatial Discretization	Grid Type	Time-Integrator
WRF	NCAR	Finite Difference	Structured	Split-Explicit
COAMPS	NRL-Monterey	Finite Difference	Structured	Split-Explicit
Lokal Modell	DWD	Finite Difference	Structured	Split-Explicit/ Semi-Implicit
NUMA	NPS/NRL	Spectral Elements/ Disc. Galerkin	Unstructured (any grid)	Semi-Implicit: 3D and 1D Vertical

Design Philosophy (1)

Numerical
Methods

DG
(Discontinuous
Galerkin)

CG
(Continuous
Galerkin)



MPI Dry core
under
development.

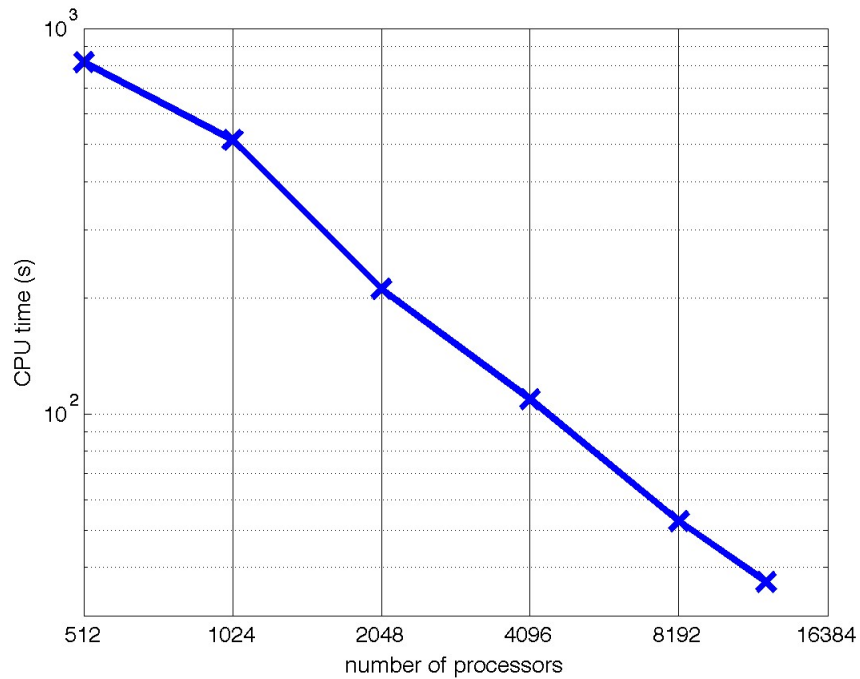
MPI Dry core
developed.
Physics will
be added this
year.

Limited-Area
(Mesoscale)

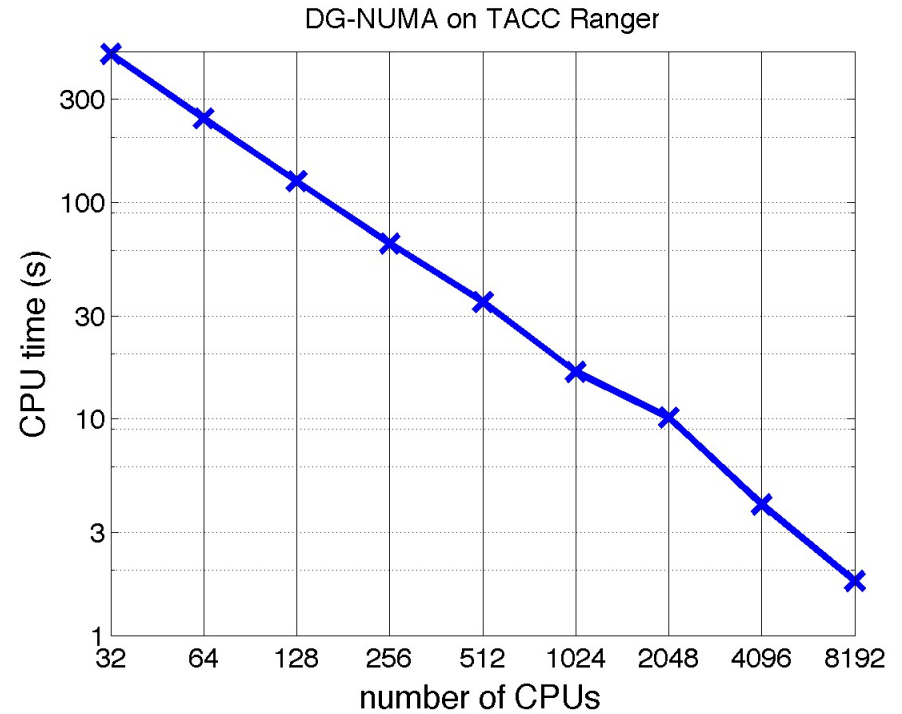
Global

Scale

Performance of the NUMA Model (3D Rising Thermal Bubble)



Continuous Galerkin



Discontinuous Galerkin

16 Million Grid Points