



Acquisition Research Program: Creating Synergy for Informed Change

An Analysis of U.S. Navy Humanitarian Assistance and Disaster Relief Operations

Cullen M. Greenfield
Cameron A. Ingram

Graduate School of Business and Public Policy
Naval Postgraduate School

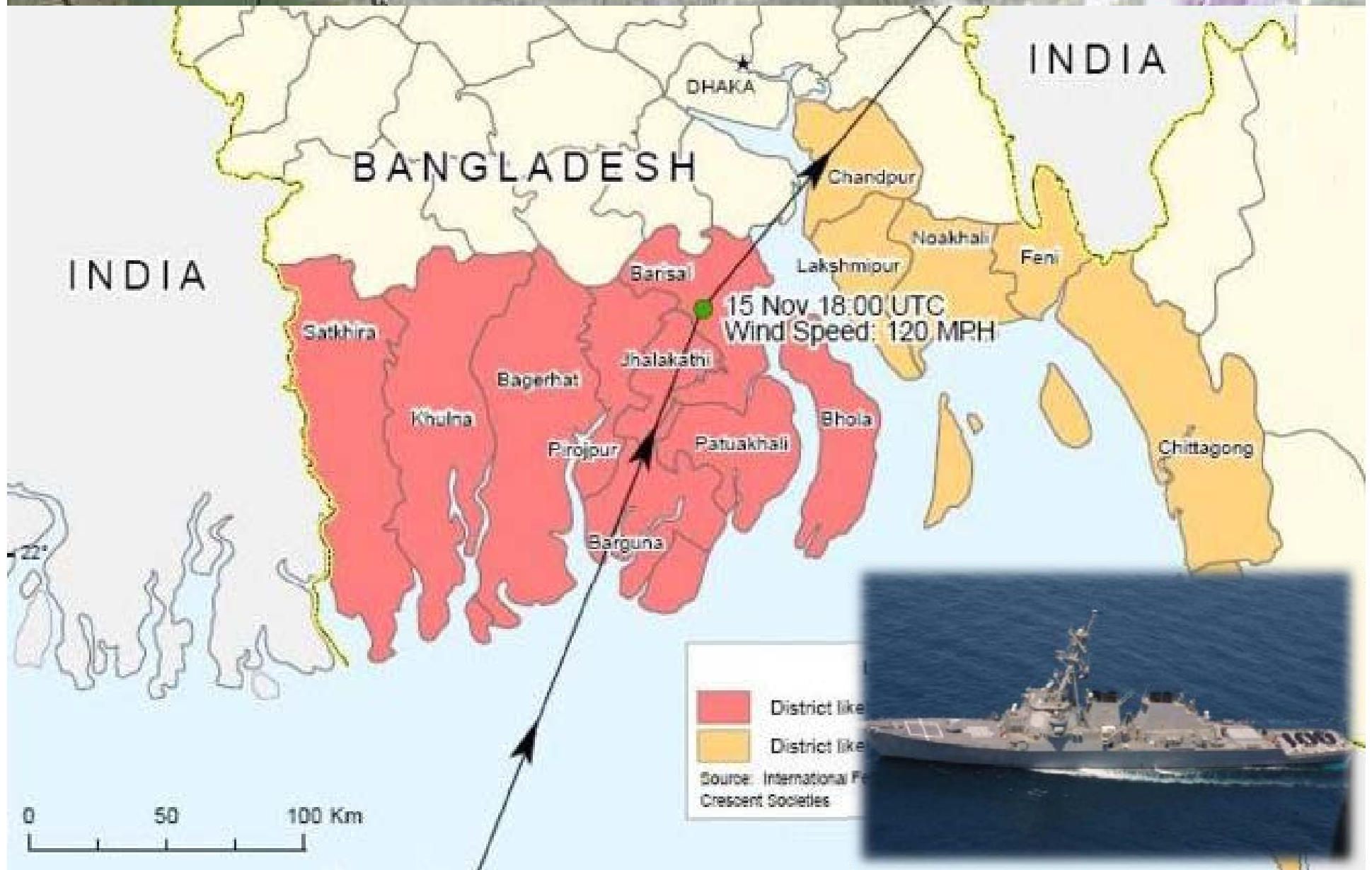
Report Documentation Page

Form Approved
OMB No. 0704-0188

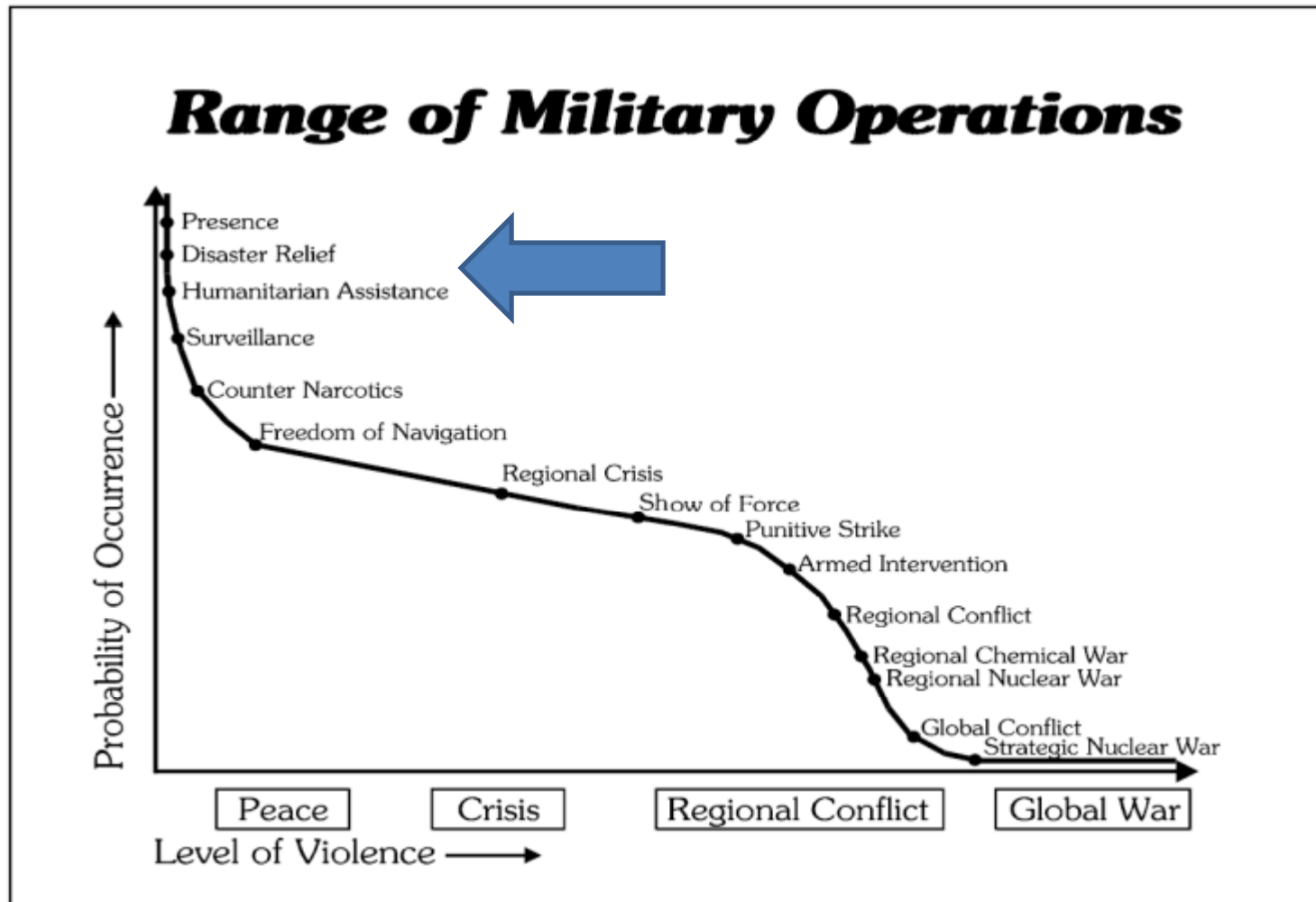
Public reporting burden for the collection of information is estimated to average 1 hour per response, including the time for reviewing instructions, searching existing data sources, gathering and maintaining the data needed, and completing and reviewing the collection of information. Send comments regarding this burden estimate or any other aspect of this collection of information, including suggestions for reducing this burden, to Washington Headquarters Services, Directorate for Information Operations and Reports, 1215 Jefferson Davis Highway, Suite 1204, Arlington VA 22202-4302. Respondents should be aware that notwithstanding any other provision of law, no person shall be subject to a penalty for failing to comply with a collection of information if it does not display a currently valid OMB control number.

1. REPORT DATE MAY 2011	2. REPORT TYPE	3. DATES COVERED 00-00-2011 to 00-00-2011			
4. TITLE AND SUBTITLE An Analysis of U.S. Navy Humanitarian Assistance and Disaster Relief Operations		5a. CONTRACT NUMBER			
		5b. GRANT NUMBER			
		5c. PROGRAM ELEMENT NUMBER			
6. AUTHOR(S)		5d. PROJECT NUMBER			
		5e. TASK NUMBER			
		5f. WORK UNIT NUMBER			
7. PERFORMING ORGANIZATION NAME(S) AND ADDRESS(ES) Naval Postgraduate School, Graduate School of Business and Public Policy, Monterey, CA, 93943		8. PERFORMING ORGANIZATION REPORT NUMBER			
9. SPONSORING/MONITORING AGENCY NAME(S) AND ADDRESS(ES)		10. SPONSOR/MONITOR'S ACRONYM(S)			
		11. SPONSOR/MONITOR'S REPORT NUMBER(S)			
12. DISTRIBUTION/AVAILABILITY STATEMENT Approved for public release; distribution unlimited					
13. SUPPLEMENTARY NOTES Presented at the Naval Postgraduate School's 8th Annual Acquisition Research Symposium, 10-12 May 2011, Seaside, CA					
14. ABSTRACT					
15. SUBJECT TERMS					
16. SECURITY CLASSIFICATION OF:			17. LIMITATION OF ABSTRACT Same as Report (SAR)	18. NUMBER OF PAGES 21	19a. NAME OF RESPONSIBLE PERSON
a. REPORT unclassified	b. ABSTRACT unclassified	c. THIS PAGE unclassified			

Cyclone Sidr. Nov 15, 2007



Probability of Mission



Source: Nix, D., (2011, January) *The Spectrum of Operations* (Unpublished PowerPoint Presentation). Joint Military Operations course, Naval War College.



Questions of Interest

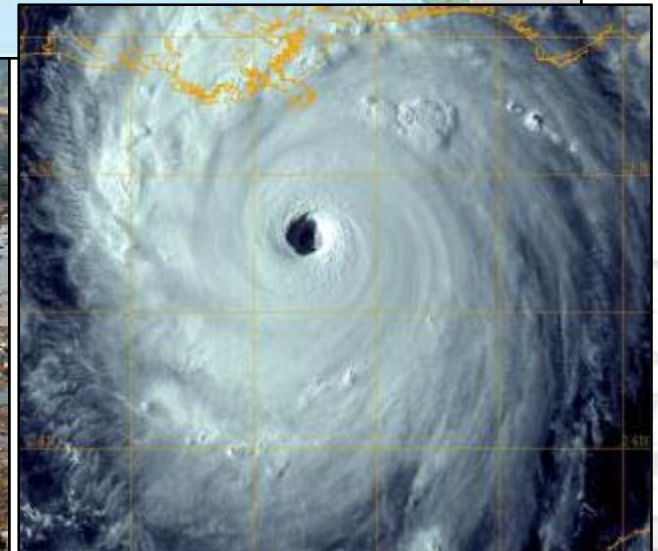
- How does the US Navy conduct HADR operations?
 - Response timelines?
 - Ship selections?
 - Missions?
- How *should* the US Navy conduct HADR operations?
 - Future research...



A Scenario Approach

Our research focused on:

- 1) Three disasters
- 2) USN and MSC ships provided for relief efforts
- 3) Missions Capabilities provided to relief efforts

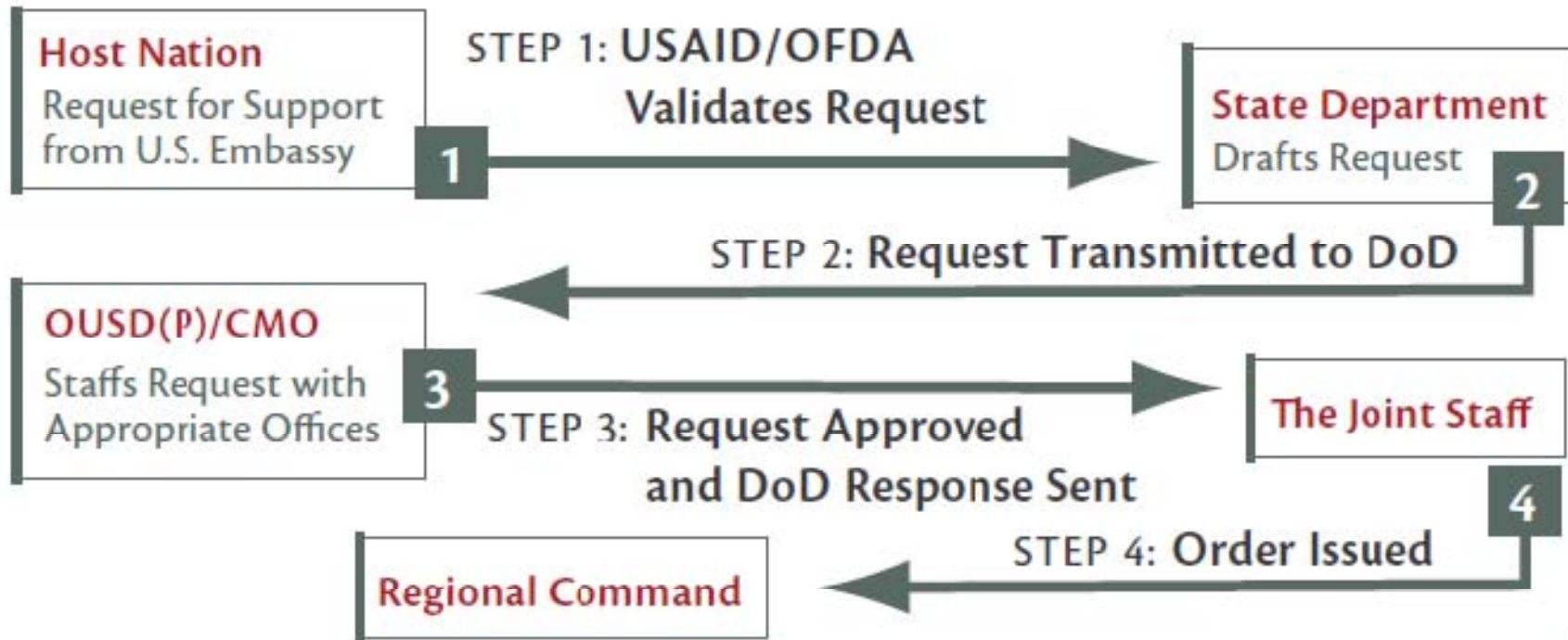


Common Disaster Traits

- Deaths and injuries
- Population dispersion, homelessness, missing persons
- Facility destruction, loss of common goods
- Demand for freshwater, food, and medical supplies
- Demand for medical personnel, facilities, and volunteers
- Destruction of transportation infrastructure
- Large amounts of debris and destroyed buildings
- Uncertainty in coast line with regard to navigation



Mission Requests



- **Critical:** Missions with major impact on relief efforts
- **Non-Critical:** Missions generally of less importance



Critical Missions

Action Missions

- Aircraft Support
- Landing Craft Support
- Search and Rescue
- Personnel Transfer Support
- Fresh Water Production
- Personnel Support
- Berthing Capability
- Medical Support

Cargo Missions

- Dry Goods
- Refrigerated Goods
- Fresh Water
- Roll On – Roll Off
- Fuel
- Self Sufficient Handling Capability



Parameters

- Difficult to determine quantitative scale of capabilities
- Solution: Categorize ships into one of three levels of capability
 - Cutoff points chosen based on 1/3 splits or significant changes in mission capability



The vessel has little no capability to conduct the specified mission



The vessel has some capability to conduct the specified mission



The vessel is very capable in conducting the specified mission



- Traditional Mission
 - Combat Operations
- What do they contribute to HADR operations?



Missions to Platforms			Mission / Ship Characteristic															
			Aircraft support	Landing Craft support	Search and Rescue	Cargo Capacity				Personnel transfer	Freshwater Production	Personnel support	Berthing capability	Medical support	Transit speed	Hydrographic survey	Salvage Ops	Towing
U.S. Navy	Amphibious Ships	CVN (Nimitz)	Green	Red	Green	Yellow	Yellow	Yellow	Red	Yellow	Yellow	Green	Yellow	Green	Green	Red	Red	Red
		CVN (Enterprise)	Green	Red	Green	Yellow	Yellow	Yellow	Red	Yellow	Yellow	Green	Yellow	Green	Green	Red	Red	Red
		LHD	Green	Green	Green	Yellow	Yellow	Yellow	Red	Yellow	Green	Yellow	Green	Green	Yellow	Red	Red	Red
		LHA	Green	Green	Green	Yellow	Yellow	Yellow	Red	Yellow	Green	Yellow	Green	Green	Yellow	Red	Red	Red
		LCC	Yellow	Red	Yellow	Yellow	Red	Red	Red	Red	Yellow	Red	Yellow	Yellow	Yellow	Red	Red	Red
		LPD (San Antonio)	Green	Green	Green	Yellow	Red	Red	Red	Red	Yellow	Red	Yellow	Yellow	Yellow	Red	Red	Red
		LPD (Austin)	Green	Green	Green	Yellow	Red	Red	Red	Red	Yellow	Red	Yellow	Yellow	Yellow	Red	Red	Red
		LSD (Harpers Ferry)	Green	Green	Green	Yellow	Red	Red	Red	Red	Yellow	Red	Yellow	Yellow	Yellow	Red	Red	Red
	LSD (Whidby Island)	Green	Green	Green	Yellow	Red	Red	Red	Red	Yellow	Red	Yellow	Yellow	Yellow	Red	Red	Red	
	CRUDES	CG	Yellow	Red	Yellow	Red	Red	Red	Red	Red	Yellow	Red	Red	Red	Red	Red	Red	Yellow
		DDG (FLT I & II)	Red	Red	Red	Red	Red	Red	Red	Red	Red	Red	Yellow	Red	Red	Red	Red	Yellow
		DDG (FLT IIA)	Yellow	Red	Yellow	Red	Red	Red	Red	Red	Yellow	Red	Red	Red	Red	Red	Red	Yellow
		Frigates	Yellow	Red	Yellow	Red	Red	Red	Red	Red	Yellow	Red	Red	Red	Red	Red	Red	Yellow
	Other	LCS (Freedom)	Yellow	Red	Yellow	Red	Red	Red	Red	Red	Yellow	Red	Red	Red	Red	Red	Red	Yellow
		LCS (Independence)	Yellow	Red	Yellow	Red	Red	Red	Red	Red	Yellow	Red	Red	Red	Green	Red	Red	Yellow
		PC	Yellow	Red	Yellow	Red	Red	Red	Red	Red	Yellow	Red	Red	Red	Green	Red	Red	Yellow
MCM		Red	Red	Red	Red	Red	Red	Red	Red	Red	Red	Red	Red	Green	Red	Red	Green	



MSC

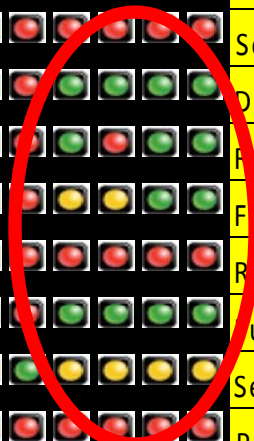
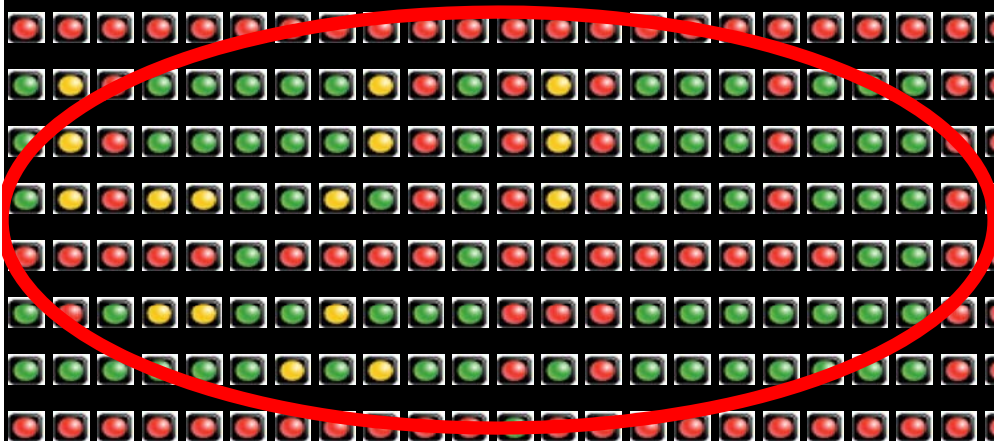
- Traditional Mission
 - Combat Support
 - Multi-mission (research, etc)



- Ships more capable of meeting many HADR mission requirements
 - Combat support and HADR operations are actually very similar



Military Sealift Command (MSC)																								Missions to Platforms		Mission / Ship Characteristic								
Ready Reserve Force				PM - 5				PM - 3				PM - 2				PM - 1																		
Aviation Logistics Support	Break-Bulk Ships	OPDT	Lighterage-a-board ships	Crane Ships	RO/RO ships	Fast Sealift Ship	Dry Cargo	Common Use Tanker	T-5	LMSR	HSV	Break-Bulk	OPDS	T-AVB	T-AK (USA)	T-AK (USAF)	T-AOT	MPF Container	MPS	LMSR	T-ARC	T-AGM	T-AGS (Nav)					T-AGS (Survey)	T-AGOS	AS	LCC	T-AH	T-ATF	T-ARS
																								Aircraft support										
																								Landing Craft support										
																								Search and Rescue										
																								Dry goods		Cargo Capacity								
																								Refrigerated goods										
																								Fresh water										
																								Roll On Roll Off										
																								Fuel										
																								Self Sufficient										
																								Personnel transfer										
																								Freshwater Production										
																								Personnel support										
																								Berthing capability										
																								Medical support										
																								Transit speed										
																								Hydrographic survey										
																								Salvage Ops		13								
																								Towing										



Aircraft & Landing Craft

-Numbers supported not analyzed in our research

-Capabilities DID influence analysis of ships

Capability / Aircraft		Lift	Personnel Transport	Range	Vertical Replenishment	SAR	Speed	Mission / Ship Characteristic															
								Aircraft support	Landing Craft support	Search and Rescue	Cargo Capacity				Personnel transfer	Freshwater Production	Personnel support	Berthing capability	Medical support	Transit speed	Hydrographic survey	Salvage Ops	Towing
Seaborne Aircraft	SH-60B	●	●	●	●	●	●	●	●	●	●	●	●	●	●	●	●	●	●	●	●	●	●
	SH-60F	●	●	●	●	●	●	●	●	●	●	●	●	●	●	●	●	●	●	●	●	●	●
	MH-60R	●	●	●	●	●	●	●	●	●	●	●	●	●	●	●	●	●	●	●	●	●	●
	MH-60S	●	●	●	●	●	●	●	●	●	●	●	●	●	●	●	●	●	●	●	●	●	●
	HH-60H	●	●	●	●	●	●	●	●	●	●	●	●	●	●	●	●	●	●	●	●	●	●
	CH-46E	●	●	●	●	●	●	●	●	●	●	●	●	●	●	●	●	●	●	●	●	●	●
	CH-53E	●	●	●	●	●	●	●	●	●	●	●	●	●	●	●	●	●	●	●	●	●	●
	CH-53E	●	●	●	●	●	●	●	●	●	●	●	●	●	●	●	●	●	●	●	●	●	●
	MH-53E	●	●	●	●	●	●	●	●	●	●	●	●	●	●	●	●	●	●	●	●	●	●
	AH-1W / AH-1Z	●	●	●	●	●	●	●	●	●	●	●	●	●	●	●	●	●	●	●	●	●	●
	HH-1N / UH-1N / UH-1Y	●	●	●	●	●	●	●	●	●	●	●	●	●	●	●	●	●	●	●	●	●	●
	MV-22 / CV-22	●	●	●	●	●	●	●	●	●	●	●	●	●	●	●	●	●	●	●	●	●	●
Landing Craft	LCAC	●	●	●	●	●	●	●	●	●	●	●	●	●	●	●	●	●	●	●	●	●	●
	LCU	●	●	●	●	●	●	●	●	●	●	●	●	●	●	●	●	●	●	●	●	●	●
	LCM (8)	●	●	●	●	●	●	●	●	●	●	●	●	●	●	●	●	●	●	●	●	●	●
	LCM (6)	●	●	●	●	●	●	●	●	●	●	●	●	●	●	●	●	●	●	●	●	●	●

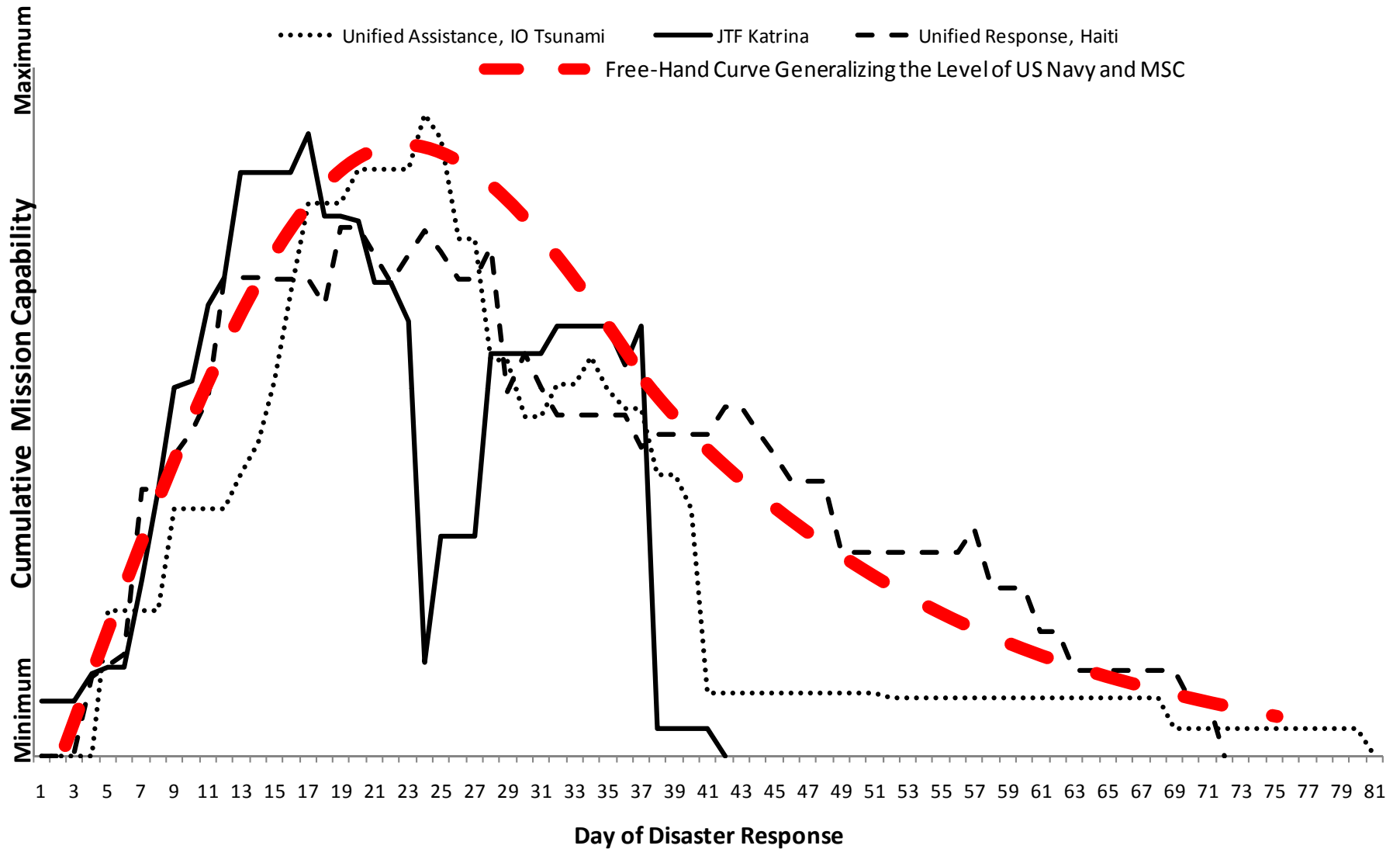


Response Summary

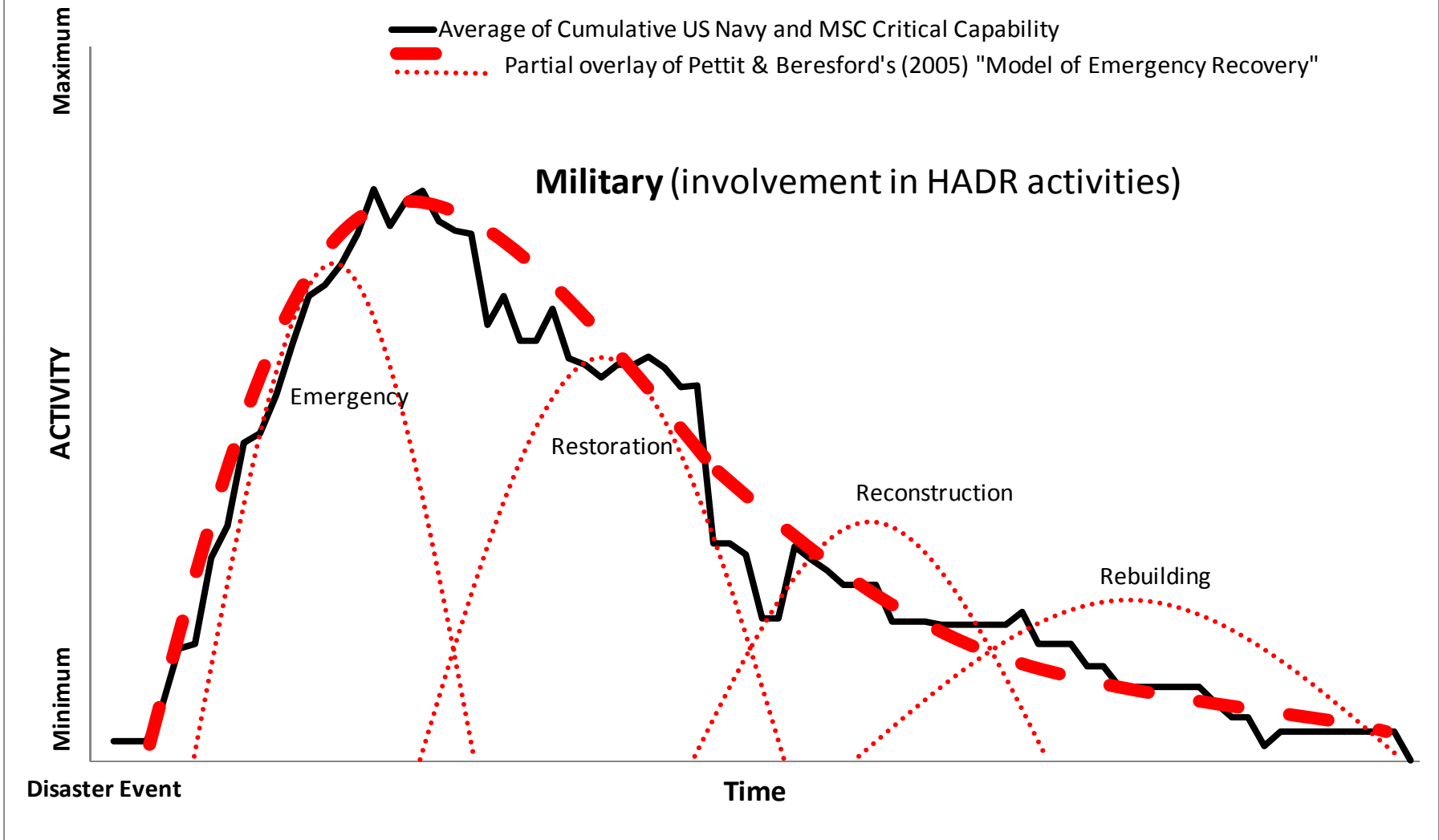
Response Summary Table			
Category	Unified Assistance	JTF Katrina	Unified Response
CG/DDG/FFG	6	0	4
LPD/LSD	3	3	5
LHA/LHD	2	2	3
CV/CVN	1	2	1
T-AH	1	1	1
MSC/Misc (w/o T-AH)	14	17	17
SSN	2	0	0
MCM/MHC	0	9	0
TOTAL SHIPS	29	34	31



Navy and MSC Cumulative Critical Capability



Average of Cumulative US Navy and MSC Critical Capability provided for Unified Assistance, JTF Katrina and Unified Response



Conclusions

- Consistent Response Patterns
- Ship Capabilities
- A ship designed for HADR
- Special considerations
- Task Force and Force Structure



HADR Task Force



Future Research

- Quantitative method of comparing ships capabilities
- Analysis of what missions different ships actually support
- Optimization model to determine ideal composition of a task force

