



***Air Force Operational Medicine:
Using the Enterprise Estimating Supplies Program to
Develop Materiel Solutions for the Operational
Requirements of the Air Force Ophthalmology
Augmentation Team (FFEYE)***

*Curt Hopkins
Ralph Nix
Vern Wing
Carrie Brown
Charles E. Jackson*



Naval Health Research Center

Document No. 10-150

The views expressed in this article are those of the authors and do not necessarily reflect the official policy or position of the Department of the Navy, Department of Defense, nor the U.S. Government. Approved for public release; distribution is unlimited.

*Naval Health Research Center
140 Sylvester Rd.
San Diego, California 92106-3521*

**Air Force Operational Medicine: Using the Enterprise Estimating Supplies
Program to Develop Materiel Solutions for the Operational Requirements of the Air
Force Ophthalmology Augmentation Team (FFEYE)**

Curt C. Hopkins
Ralph E. Nix
Vern Wing
Carrie Brown
Charles E. Jackson

Naval Health Research Center
140 Sylvester Rd.
San Diego, CA 92106-3521

Report No. 10-150, supported by the U.S. Air Force Medical Logistics Agency, under Work Unit No. 60334. The views expressed in this article are those of the authors and do not reflect the official policy or position of the Navy, Department of Defense, or the U.S. Government. Approved for public release; distribution is unlimited. This research has been conducted in compliance with all applicable federal regulations governing the protection of human subjects. No human subjects were directly involved in this research.

Executive Summary

The Naval Health Research Center (NHRC) has used its modeling and simulation expertise to develop and update conventional U.S. Air Force medical assets since 2004. Air Force medical modeling capabilities currently capture care and treatment of the sick and injured from the first responder through theater hospitalization.

The objective of this study was to leverage medical modeling and simulation advantages to provide recommendations for allowance standard (AS) configurations based on the Air Force Ophthalmology Augmentation Team (FFEYE) operational and clinical requirements. NHRC analysts reviewed the FFEYE, analyzed clinical requirements with subject matter experts, and used modeling and simulation tools to develop the operationally-based and patient-driven recommended 917F line list.

The Unit Type Code (UTC) capabilities, operational requirements, and materiel solutions were identified, and issues of modernization, clinical requirement, standardization, and redundancy were addressed. Total changes resulted in a reduction in weight by 16%, cube by 20%, and cost by 3%, or \$10,875.

Modeling and simulating a medical system like the FFEYE, with a range of capabilities and functional areas, validates the materiel solutions for each UTC. It is effective in facilitating AS reviews that focus on advancing the mission, operational requirements, and capabilities of these agile, deployable medical resources.

Table of Contents

| | |
|--------------------------------------------------------------------------------------------------------------------------------------|-----|
| Introduction..... | 4 |
| Method | 4 |
| Subject Matter Expert Guidance..... | 5 |
| Patient Stream..... | 5 |
| Expeditionary Medical Knowledge Warehouse | 6 |
| Capability..... | 6 |
| Results..... | 7 |
| Change Justification..... | 7 |
| Quantity Changes..... | 7 |
| Conclusion | 8 |
| References..... | 9 |
| Appendix A. Air Force Ophthalmology Augmentation Team Line List..... | A-1 |
| Appendix B. Air Force Ophthalmology Augmentation Team (FFEYE) aggregated line items from the 938 EMEDS Allowance Standard..... | B-1 |

Introduction

The Naval Health Research Center (NHRC) has used its modeling and simulation expertise to develop and update U.S. Air Force medical capabilities, allowance standards (ASs), and surgical subspecialty Unit Type Codes (UTCs) since 2004. Air Force medical units must remain small, light, and flexible. Based on the success of previous work, the Air Force asked NHRC to conduct a review of the Ophthalmology Augmentation Team (FFEYE) (Konoske, 2009).

The U.S. Air Force Medical Services is faced with a wide range of potential scenarios, from providing warfighters forward resuscitative care to assisting civilian populations during humanitarian relief operations. Air Force planners and UTC developers have closely followed the *Joint Vision 2010* concept of providing highly mobile medical resources with a minimal logistic footprint, without compromising capability (Office of the Joint Chiefs of Staff, 1998). Additionally, guidance provided by the *Joint Vision 2020* calls for a more scientific approach that leverages and enhances existing information technologies to support modern operational capabilities (Office of the Joint Chiefs of Staff, 2000). Emphasis on mobility and capability resulted in a modular approach to prepare, plan, and deploy the FFEYE expeditionary medical platform.

Method

The NHRC method of modeling medical supply requirements was developed to establish and/or review medical inventories for various levels of care. Its aim is to give clinicians, in the field, the materiel they need to provide the best care possible, while still maintaining as small a logistical footprint as possible. It involves a process that begins with the identification of likely patient types to be encountered by a particular type of medical treatment asset, including combat wounds, non-battle injuries, and illnesses. *International Classification of Diseases, Ninth Revision (ICD-9)* coded patient conditions, selected by the Defense Medical Materiel Program Office, are used for this purpose. Figure 1 illustrates the NHRC processes used when developing a modeling and simulation package.

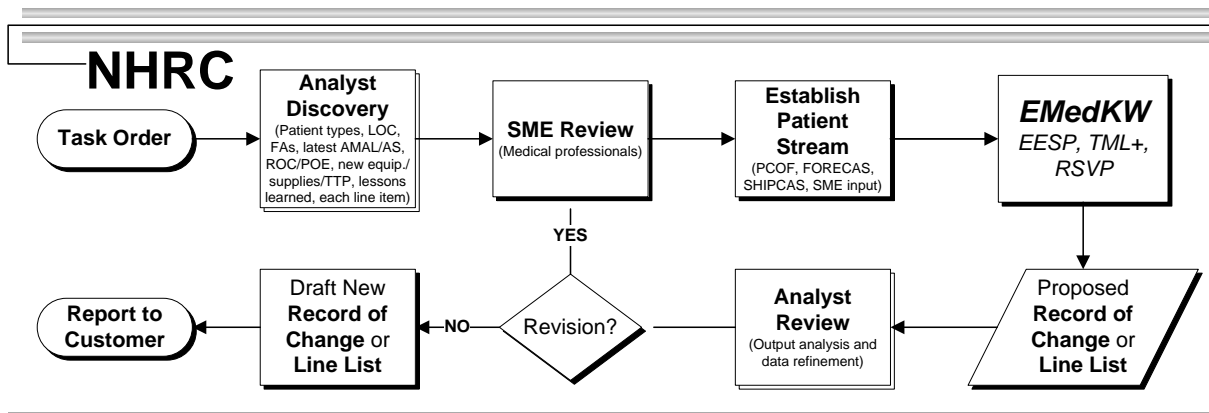


Figure 1. An example of the NHRC AS review process.

Subject Matter Expert Guidance

A comprehensive review of the FFEYE AS 917F was conducted to establish a baseline. The kick-off meeting was held December 9, 2009 via teleconference, with subsequent teleconferences and an on-site meeting, held January 27, 2010, between NHRC researchers and subject matter experts (SMEs).

Patient Stream

An 84-person patient stream, vetted by the ophthalmology SME panel, was derived from theater patient encounter data collected during Operation Enduring Freedom over a 9-month period (between 11 March and 25 November 2007). This patient stream was used to simulate the equipment and supply requirements for a range of surgical and non-surgical injuries and illnesses, typically seen and treated by an ophthalmologist and one technician working 12-hour days, 7 days per week. Table 1 displays the patient stream.

Table 1
FFEYE Patient stream

| ICD-9 | ICD-9 descriptions | No. pts |
|--------|---------------------------------------------|---------|
| 802.6 | FX ORBITAL FLOOR-CLOSED | 4 |
| 361.0 | DETACHMNT W DEFECT NOS | 7 |
| 871.0 | OCULAR LAC W/O PROLAPSE | 7 |
| 941.19 | 1ST DEG BURN HEAD-MULT | 3 |
| 372.00 | ACUTE CONJUNCTIVITIS NOS | 3 |
| 372.30 | CONJUNCTIVITIS NOS | 1 |
| 370.00 | CORNEAL ULCER NOS | 1 |
| 918.1 | SUPERFICIAL INJ CORNEA | 6 |
| 364.00 | ACUTE IRIDOCYCLITIS NOS | 1 |
| 367.9 | REFRACTION DISORDER NOS | 1 |
| 870.9 | OPN WND OCULAR ADNEX NOS | 2 |
| 921.0 | BLACK EYE NOS | 1 |
| 365 | GLAUCOMA | 2 |
| 368 | VISUAL DISTURBANCE, PHOTOPHOBIA | 5 |
| 376 | DISORDERS OF THE ORBIT | 7 |
| 940 | BURN CONFINED TO EYE AND ADNEXA | 2 |
| 360.5 | RETAINED INTRAOCULAR FOREIGN BODY, MAGNETIC | 30 |
| 379.9 | UNSPECIFIED DISORDER OF EYE AND ADNEXA | 1 |
| Total | | 84 |

Expeditionary Medical Knowledge Warehouse

The patient stream is input to the Expeditionary Medical Knowledge Warehouse (EMedKW) program to perform modeling and simulation. EMedKW is comprised of the Enterprise Estimation Supply Program (EESP), the Tactical Medical Logistics (TML+) planning tool, and the ReSupply Validation Program (RSVP). EMedKW is a service-oriented architecture system designed to protect and organize medical data. EMedKW provides the ability to estimate the equipment and consumable items needed to treat a particular patient distribution, while also tracking inventory to monitor mission readiness. Within EMedKW, the tasks required to treat each PC code are identified and matched with the required equipment and consumable items. Review of the output informs the appropriate modifications to the 917F line list for the Air Combat Command Manpower and Equipment Force Packaging System review.

The following example describes the EMedKW data structure (see Figure 2). The task profile shows the likely clinical tasks to be performed on this type of patient in that functional area, and the percentage of those patients expected to receive them. The “Equipment/supplies” column identifies the items needed to complete the “Insert endo-trach tube” task at that level of capability. Not shown in this figure are additional data fields used to calculate supply quantities, including the amount of each supply needed to complete the task, how often the task will be repeated in the first 24 hours of treatment, how often the task will be repeated in each subsequent 24-hour period, and the average length of stay at that facility.

| ICD-9 code | Medical capability | Functional area | Task profile | Patients % | Equipment/supplies |
|------------|----------------------------|-----------------|------------------------------|------------|--------------------------------------------------|
| 800.13 | Emergency forward care | Triage/pre-op | Triage | 100 | Laryngoscope INF/ADL w/ 4 detachable blades |
| 800.26 | Forward resuscitative care | O.R. | Patient assessment | 30 | Tube trach endotrach double lumen left 39 Fr |
| 800.42 | | Ward/ICU | Insert endo-trach tube | 100 | Forceps trach McGill fenestrated |
| 800.60 | Theater | Radiology | Neuro checks | 60 | Lubricant surgical 5 gram 144S |
| 801.01 | hospitalization | Lab | Apply c-collar | 20 | Vecuronium bromide inj 10mg/ml 10ml vial |
| 850.1 | Definitive care | Pharmacy | Set-up O2 | 20 | Basin emesis plastic disp., 250S |
| 850.9 | | | Admin O2 | 100 | Gloves patient exam large 100s |
| - | | | Cardiac monitoring | 80 | Syringe hypodermic 3ml Luer Lock 100s |
| - | | | CPR | 100 | Needle hypodermic 20ga 1.43-1.56 Luer Lock, 100S |
| 870.4 | | | Emergency control hemorrhage | | Pad isopropyl impregnated, 200S |

Figure 2. An example of NHRC’s programmatic modeling process using a patient ICD-9 Code 800.13.

Capability

The FFEYE provides the supplies and equipment required to establish medical and surgical eye care for a deployed medical facility, including acute medical and surgical

interventions for trauma to the eyes and ocular adnexa and for limited facial injuries. The team's capabilities are optimized when deployed with Neurosurgery (FFNEU) and the Otolaryngology (FFENT). Staffing consists of an ophthalmologist (45E3) and an ophthalmic journeyman technician (4V051).

Results

Change Justification

Modeling and simulation provides visibility for change justifications. These are typically placed in four categories; modernization, clinical requirement, standardization, and redundancy. In this study, the FFEYE 917F AS is optimized by drawing on existing EMEDS capabilities. There are 92 recommended line item changes. Forty line items are recommended for deletion, and 24 of these are available in the EMEDS 938 AS. The remaining items are either redundant or not required for clinical or surgical requirements. There are no items recommended for addition.

Quantity Changes

The 917F FFEYE AS was optimized using the 938 EMEDS +10 AS. There are 13 equipment items that are recommended for deletion from the 917F AS—each is either available or has a reasonable substitute in the 938 EMEDS AS. The overall weight for equipment is reduced by 82%, cube by 16%, and cost by 1.34%, or \$3,830.21.

Thirteen equipment line items are recommended for deletion from the 917F. These items would be drawn from the EMEDS 938 AS, including three instrument trays and a surgical instrument sterilizer. One glass syringe is recommended for deletion due to clinical requirements. The overall weight for equipment is decreased by 5%, cube by less than 2%, and cost by 1%, or \$3,700.

Ten medications currently in the 917F AS would be drawn from the EMEDS 938 AS pharmacy. Optimizing medications from the EMEDS 938 pharmacy reduces the weight by 56%, cube by 47%, and cost by 47%, or \$4,600. Several medication quantities were changed based on the patient stream simulation results. For example, bupivacaine increased from 6 packages of 10 to 10 packages, contact lens cleaning solution was decreased from 80 bottles to 12, and homotropine solution went from 30 bottles to 7.

Consumables optimized from the EMEDS 938 AS will decrease the overall weight by 80%, cube 80%, and cost 15%, or \$2,500. Twenty-two line items are recommended for deletion. The majority of deletions can be optimized through either the logistics functional area of the 938 AS or the operating room functional area, including surgeons gloves, sponge gauze, and IV sets. Nine line items increased marginally, primarily sutures.

Total changes resulted in a reduction in weight by 16%, cube by 20%, and cost by 3%, or \$10,875. Table 2 shows an overview of changes by category. A detailed listing of the 917F AS recommended changes is provided in Appendix A. EMEDS AS quantities found in the other functional areas are aggregated and listed in Appendix B.

Table 2
FFEYE Weight, Cube, and Cost

| Category | Weight | Cube | Cost |
|-----------------|---------------|-------------|---------------|
| 917F equipment | 2,206.05 | 432.01 | \$350,084.76 |
| ESP equipment | 2,102.69 | 421.51 | \$346,377.33 |
| Difference | -103.36 | -10.50 | (\$3,707.43) |
| % Change | -4.69 | -2.43 | -1.06 |
| 917F medicine | 197.33 | 97.12 | \$10,014.04 |
| ESP medicine | 85.32 | 51.15 | \$5,343.97 |
| Difference | -112.01 | -45.97 | (\$4,670.07) |
| % Change | -56.76 | -47.33 | -46.64 |
| 917F consumable | 258.33 | 78.93 | \$17,213.64 |
| ESP consumable | 51.51 | 15.42 | \$14,716.35 |
| Difference | -206.82 | -63.51 | (\$2,497.29) |
| % Change | -80.06 | -80.47 | -14.51 |
| 917F totals | 2,661.70 | 608.05 | \$377,312.44 |
| ESP totals | 2,239.51 | 488.07 | \$366,437.65 |
| Difference | -422.19 | -119.98 | (\$10,874.79) |
| % Change | -15.86 | -19.73 | -2.88 |

Conclusion

Modeling and simulation was used to study the FFEYE and recommend changes to its AS. The clinical capabilities include personnel and equipment required to establish medical and surgical eye care support for a deployed medical facility. The FFEYE must be attached to an EMEDS +10, EMEDS +25, or Air Force Theater Hospital.

Modeling and simulation tools are essential for projecting appropriate medical care needs for our service personnel. Standardizing equipment and consumables with the Defense Medical Material Program Office-approved items makes the FFEYE creation and resupply quicker and more efficient. Updating and maintaining the patient data and FFEYE contents database will ensure that future medical needs are met in the most effective manner.

References

Konokse, P. (2009). *Statement of Work FY10: Using the Naval Health Research Center's Medical Planning Applications to Review or Validate Air Force Medical Requirements and Capabilities*. San Diego, CA: Naval Health Research Center.

Office of the Joint Chiefs of Staff. (1998). *Joint Vision 2010*. Washington DC: Department of Defense.

Office of the Joint Chiefs of Staff. (2000). *Joint Vision 2020*. Washington, DC: Department of Defense.

Appendix A.
Air Force Ophthalmology Augmentation Team Line List

| Status | NSN | Supply description | UI | AS qty | ESP qty | AS wt | AS cube | AS cost | ESP wt | ESP cube | ESP cost |
|------------------|---------------|-------------------------------------------------------------------|----|--------|---------|-------|---------|----------|--------|----------|----------|
| Equipment | | | | | | | | | | | |
| A | 6540011455210 | BAG PROTECTIVE VISION CHARTS DUCK CLOTH COTTON | EA | 1 | 1 | 0.47 | 0.04 | \$24.33 | 0.47 | 0.04 | \$24.33 |
| A | 6530007709220 | BASIN EMESIS STEEL KIDNEY SHAPE 500ML | EA | 2 | 2 | 1.70 | 0.06 | \$28.48 | 1.70 | 0.06 | \$28.48 |
| A | 7520002855416 | BASKET WASTEPAPER | EA | 1 | 1 | 3.00 | 2.00 | \$9.70 | 3.00 | 2.00 | \$9.70 |
| A | 6140014594297 | BATTERY STORAGE AF SP25B KOWA SL-14REPLACEMENT BATTERY | EA | 1 | 1 | 0.75 | 0.01 | \$362.25 | 0.75 | 0.01 | \$362.25 |
| A | 6530004042654 | BOWL SURG SPONGE PLAS 44 OZ 3X6.250" NOT NESTING AUTOCLAVABLE 12S | EA | 1 | 1 | 0.10 | 0.01 | \$63.81 | 0.10 | 0.01 | \$63.81 |
| A | 6540014599272 | BULB SLIT LAMP OPHTHALMIC USED WITH 6540014599226 LAMP SLIT OPHT | EA | 2 | 2 | 1.10 | 0.22 | \$208.66 | 1.10 | 0.22 | \$208.66 |
| A | 6515013561757 | BUR REMOVER RUST RING 5MM REPLACEMENT F/ALGERBRUSH MDL E0819A&B | EA | 2 | 2 | 0.02 | 0.02 | \$209.50 | 0.02 | 0.02 | \$209.50 |
| A | 6150004856149 | CABLE ASSEMBLY POWER ELEC 2 CONDUCTOR 1 | EA | 5 | 5 | 22.50 | 0.83 | \$92.65 | 22.50 | 0.83 | \$92.65 |
| A | 6515011397942 | CABLE ASSY ELECTROSURG APPAR PROXIMAL END DOUBLE PRONG JACK 144" | EA | 2 | 2 | 0.36 | 1.20 | \$58.04 | 0.36 | 1.20 | \$58.04 |
| A | 6150014557364 | CABLE BATTERY GEL CELL C | EA | 1 | 1 | 4.00 | 2.00 | \$44.19 | 4.00 | 2.00 | \$44.19 |
| A | 6540002999497 | CALIPER EYE CASTROVIEJ 3.375IN 0-20MM SHARP P | EA | 1 | 1 | 0.06 | 0.00 | \$154.61 | 0.06 | 0.00 | \$154.61 |
| A | 6515014668162 | CANNULA AIR INJECTION .075IN LG ANGULAR 5MM | EA | 3 | 3 | 1.65 | 0.05 | \$94.50 | 1.65 | 0.05 | \$94.50 |

Note. A=quantity unchanged; B=quantity increase; C=quantity decrease; D=delete; E=add, deleted replacement item; F=add, new item

| Status | NSN | Supply description | UI | AS qty | ESP qty | AS wt | AS cube | AS cost | ESP wt | ESP cube | ESP cost |
|--------|---------------|-------------------------------------------------------------------------|----|--------|---------|-------|---------|------------|--------|----------|------------|
| A | 6515012151026 | CANNULA AIR INJECTION 27GA 0.75IN 45 DEG BLUNT POINT | EA | 3 | 3 | 0.24 | 0.03 | \$37.29 | 0.24 | 0.03 | \$37.29 |
| A | 6515011398665 | CANNULA ANTERIOR CHAMBER SCHEIE 27GAGEX0.75IN NEEDLE BLUNT TIP | EA | 1 | 1 | 0.01 | 0.01 | \$9.11 | 0.01 | 0.01 | \$9.11 |
| A | 6515011216477 | CANNULA EYE BISHOP- HARMON 19GA OPN LUER SLIP | EA | 6 | 6 | 0.54 | 0.04 | \$81.30 | 0.54 | 0.04 | \$81.30 |
| A | 6515014689644 | CANNULA EYE CRS BLUNT TIP 23 GA BOTTOM PORT | EA | 4 | 4 | 0.30 | 0.01 | \$108.00 | 0.30 | 0.01 | \$108.00 |
| A | 6515011397650 | CANNULA-SCRAPER EYE KRATZ SAND BLASTED 23GAX1MM | EA | 2 | 2 | 0.20 | 0.10 | \$55.06 | 0.20 | 0.10 | \$55.06 |
| A | 6540014624696 | CASE CARRYING REFRACTOR AND KERATOMETER E.I. 6540014624634 | EA | 1 | 1 | 1.25 | 0.25 | \$249.95 | 1.25 | 0.25 | \$249.95 |
| A | 6515014602305 | CASE MICROSURGICAL | EA | 1 | 1 | 1.10 | 0.20 | \$114.47 | 1.10 | 0.20 | \$114.47 |
| A | 6515015034315 | CASE PHOROPTOR & ARM HEAVY DUTY F/MORRELL | EA | 1 | 1 | 15.00 | 3.20 | \$1,061.02 | 15.00 | 3.20 | \$1,061.02 |
| A | 6515015034319 | CASE PHOROPTOR TRIPOD MORRELL WHITE | EA | 1 | 1 | 15.00 | 2.50 | \$1,303.46 | 15.00 | 2.50 | \$1,303.46 |
| A | 6540014599279 | CASE SLIT LAMP OPHTHALMIC W/6540014599226 | EA | 2 | 2 | 20.00 | 3.44 | \$454.98 | 20.00 | 3.44 | \$454.98 |
| A | 6530014982652 | CASSETTE PLAS F/USE IN PRESTIGE 21006 AUTOCLAVE | EA | 3 | 3 | 1.65 | 0.06 | \$250.56 | 1.65 | 0.06 | \$250.56 |
| A | 6140014556934 | CELL BATTERY GELL CELL 12 VOLT SEALED | EA | 1 | 1 | 6.00 | 1.00 | \$138.28 | 6.00 | 1.00 | \$138.28 |
| A | 7105002698463 | CHAIR FOLDING W/O ARMS STEEL GRAY ENAMEL | EA | 2 | 2 | 10.00 | 2.00 | \$25.82 | 10.00 | 2.00 | \$25.82 |
| A | 6130014556944 | CHARGER GEL CELL 220/240 V EI 6140014556934 | EA | 1 | 1 | 6.00 | 1.00 | \$44.19 | 6.00 | 1.00 | \$44.19 |
| A | 6540010793516 | CHART AMSLER RECORD 50 | PG | 2 | 2 | 0.60 | 0.20 | \$7.50 | 0.60 | 0.20 | \$7.50 |

Note. A=quantity unchanged; B=quantity increase; C=quantity decrease; D=delete; E=add, deleted replacement item; F=add, new item

| Status | NSN | Supply description | UI | AS qty | ESP qty | AS wt | AS cube | AS cost | ESP wt | ESP cube | ESP cost |
|--------|---------------|-----------------------------------------------------------------|----|--------|---------|--------|---------|------------|--------|----------|------------|
| | | CHARTS | | | | | | | | | |
| A | 6540005988078 | CHART SET VISION ACUITY TEST DISTANCE VISION | SE | 2 | 2 | 6.38 | 0.28 | \$25.06 | 6.38 | 0.28 | \$25.06 |
| A | 6540005988077 | CHART SET VISION ACUITY TEST NEAR VISION | SE | 2 | 2 | 0.12 | 0.01 | \$36.20 | 0.12 | 0.01 | \$36.20 |
| A | 6540003885680 | CHART VISION ACUITY TESTING ASTIGMATIC DIAL GREEN | EA | 2 | 2 | 0.60 | 0.06 | \$55.78 | 0.60 | 0.06 | \$55.78 |
| A | 6540003885800 | CHART VISION TESTING ASTIGMA AND ILLITERATE E | EA | 2 | 2 | 0.52 | 0.02 | \$10.32 | 0.52 | 0.02 | \$10.32 |
| A | 6545009143510 | CHEST MEDICAL INSTRUMENT & SUPPLY SET AMAL #6 | EA | 6 | 6 | 240.00 | 45.00 | \$1,913.94 | 240.00 | 45.00 | \$1,913.94 |
| A | 6515012064696 | CLAMP TOWEL CROSS ACTION NON-MAGNETIC 87MM LG SCHAEDEL DESIGNED | EA | 16 | 16 | 0.96 | 0.80 | \$1,640.16 | 0.96 | 0.80 | \$1,640.16 |
| A | 6650014557381 | CLEANING KIT MICROSCOPE E.I. 6650-01-455-7280 | EA | 1 | 1 | 0.25 | 0.25 | \$47.82 | 0.25 | 0.25 | \$47.82 |
| A | 6515014653293 | CORD BIPOLAR FORCEP SILICON 12FT FULLY AUTOCL | EA | 2 | 2 | 1.10 | 0.24 | \$143.38 | 1.10 | 0.24 | \$143.38 |
| D | 6530012594318 | COVER SURGICAL INSTRUMENT STAND POLYESTER 30I | PG | 4 | 0 | 50.00 | 8.04 | \$297.92 | 0.00 | 0.00 | 0.00 |
| D | 6530007778600 | CUP SOL CORROSION-RESISTING STEEL 7 OZ | EA | 1 | 0 | 0.22 | 0.01 | \$5.86 | 0.00 | 0.00 | 0.00 |
| A | 6515011398680 | CURETTE CHALAZION MEYERHOEFER COML SZ NO.2 ROUND SOLID BLADE | EA | 2 | 2 | 0.02 | 0.02 | \$153.92 | 0.02 | 0.02 | \$153.92 |
| A | 6515013561214 | CURETTE STRAIGHT SHANK 4.70IN POLISHED FINISH SERRATED HANDLE | EA | 2 | 2 | 1.00 | 0.06 | \$129.84 | 1.00 | 0.06 | \$129.84 |

Note. A=quantity unchanged; B=quantity increase; C=quantity decrease; D=delete; E=add, deleted replacement item; F=add, new item

| Status | NSN | Supply description | UI | AS qty | ESP qty | AS wt | AS cube | AS cost | ESP wt | ESP cube | ESP cost |
|--------|---------------|------------------------------------------------------------------|----|--------|---------|-------|---------|-------------|--------|----------|-------------|
| A | 6540014862485 | DEPTH PERCEPTION APPARATUS OPHTHALMIC RANDOM DOT TEST W/2 LEVELS | EA | 1 | 1 | 1.00 | 0.14 | \$152.15 | 1.00 | 0.14 | \$152.15 |
| A | 6515011398762 | DILATOR LACHRYMAL RUEDEMANN SGL-ENDED DELICATE NEEDLE CRS SHORT | EA | 4 | 4 | 0.04 | 0.00 | \$74.00 | 0.04 | 0.00 | \$74.00 |
| A | 6540013862973 | DIODE LASER PORTABLE 115V 50/60HZ AC 90W 4X12X12IN | EA | 1 | 1 | 10.00 | 1.00 | \$20,668.33 | 10.00 | 1.00 | \$20,668.33 |
| A | 6515011648889 | DIRECTOR AND TONGUE TIE 6" LONG BLUNT/OPEN END/ROUND TIP STR CRS | EA | 2 | 2 | 0.04 | 0.02 | \$25.56 | 0.04 | 0.02 | \$25.56 |
| A | 6515014653362 | ELECTRODE SET CAUTE STD SET OF 8 ELECTRODES BENDABLE | EA | 2 | 2 | 0.90 | 0.10 | \$1,115.74 | 0.90 | 0.10 | \$1,115.74 |
| A | 6515012468243 | ELEVATOR PERIO TENZEL DBL BEV 194MM DBL END | EA | 2 | 2 | 0.50 | 0.01 | \$185.60 | 0.50 | 0.01 | \$185.60 |
| A | 6540014624614 | EXOPHTHALMOMETER PRISM HERTEL TYPE | EA | 1 | 1 | 0.79 | 0.04 | \$332.81 | 0.79 | 0.04 | \$332.81 |
| A | 6515014628863 | FIBER OPTIC LIGHT SYSTEM | EA | 1 | 1 | 9.50 | 0.14 | \$1,786.94 | 9.50 | 0.14 | \$1,786.94 |
| A | 6230011103829 | FLOODLIGHT ELECTRIC | EA | 1 | 1 | 4.50 | 0.24 | \$280.54 | 4.50 | 0.24 | \$280.54 |
| A | 6515014621143 | FORCEPS BAYONET KENNERDEL SHAFTS W/17MM SER | EA | 2 | 2 | 0.90 | 0.03 | \$96.96 | 0.90 | 0.03 | \$96.96 |
| A | 6515014653344 | FORCEPS BIPOLAR COAG 3-11/16IN COATED | EA | 2 | 2 | 1.10 | 0.24 | \$643.40 | 1.10 | 0.24 | \$643.40 |
| A | 6515014621258 | FORCEPS BIPOLAR SHEPARD STRT SHAFT 45DEG ANGL | EA | 4 | 4 | 2.00 | 0.06 | \$568.76 | 2.00 | 0.06 | \$568.76 |
| A | 6515003323900 | FORCEPS CHALAZION DESMARR 3.25-3.75IN STRT FE | EA | 2 | 2 | 0.06 | 0.01 | \$49.24 | 0.06 | 0.01 | \$49.24 |
| A | 6515014593979 | FORCEPS CHALAZION LAMBERT SMALL RND 10MM SOLID LOWER PLATE | EA | 2 | 2 | 1.10 | 0.24 | \$343.84 | 1.10 | 0.24 | \$343.84 |

Note. A=quantity unchanged; B=quantity increase; C=quantity decrease; D=delete; E=add, deleted replacement item; F=add, new item

| Status | NSN | Supply description | UI | AS qty | ESP qty | AS wt | AS cube | AS cost | ESP wt | ESP cube | ESP cost |
|--------|---------------|-----------------------------------------------------------------|----|--------|---------|-------|---------|------------|--------|----------|------------|
| A | 6515011249805 | FORCEPS DRESSING STRAIGHT BISHOP-HARMON 3-1/4 | EA | 2 | 2 | 0.34 | 0.00 | \$149.18 | 0.34 | 0.00 | \$149.18 |
| A | 6515011212330 | FORCEPS EYE CORNEAL UTIL TROUT-BARRAQ 73MM | EA | 2 | 2 | 0.20 | 0.00 | \$324.46 | 0.20 | 0.00 | \$324.46 |
| A | 6515014620734 | FORCEPS EYE JEWELER STRAIGHT SHAFT W/6MM TYING PLATFORMS120MM | EA | 4 | 4 | 0.72 | 0.32 | \$333.84 | 0.72 | 0.32 | \$333.84 |
| A | 6515014621130 | FORCEPS EYE JEWELER W/TYING PLATFORMS STRAIGHT SHAFTS 5MM TYING | EA | 4 | 4 | 1.80 | 0.05 | \$333.84 | 1.80 | 0.05 | \$333.84 |
| A | 6515011272208 | FORCEPS EYE MUSCLE TROUTMAN 106MM 45 ANGLE | EA | 2 | 2 | 0.02 | 0.00 | \$184.08 | 0.02 | 0.00 | \$184.08 |
| A | 6515011157816 | FORCEPS EYE SUT CASTROVIE STRT 0.5MM | EA | 4 | 4 | 0.04 | 0.00 | \$565.36 | 0.04 | 0.00 | \$565.36 |
| A | 6515011157667 | FORCEPS EYE SUTURE CASTROV 4IN .12MM TEETH TW | EA | 16 | 16 | 0.16 | 0.02 | \$2,607.20 | 0.16 | 0.02 | \$2,607.20 |
| A | 6515011398282 | FORCEPS FIXATION STRT CASTROV 4IN | EA | 5 | 5 | 0.05 | 0.01 | \$552.50 | 0.05 | 0.01 | \$552.50 |
| A | 6515014593774 | FORCEPS HEMO HALSTEAD & MOSQUITO 4.9IN | EA | 6 | 6 | 3.30 | 0.72 | \$139.86 | 3.30 | 0.72 | \$139.86 |
| A | 6515014593970 | FORCEPS HEMO HALSTEAD MOSQ CRV 22MM SER | EA | 6 | 6 | 3.30 | 0.72 | \$153.84 | 3.30 | 0.72 | \$153.84 |
| A | 6515011643167 | FORCEPS IRIS MCPHERSON DESIGN 86MM LG STR TYING CRS PASSIVATED | EA | 4 | 4 | 0.32 | 0.24 | \$844.48 | 0.32 | 0.24 | \$844.48 |
| A | 6515014621219 | FORCEPS LENS BLAYDES ANGLED 8MM F/TIP TO BEND O/A LG 117MM | EA | 2 | 2 | 1.00 | 0.03 | \$574.76 | 1.00 | 0.03 | \$574.76 |
| A | 6515011253267 | FORCEPS SERREFINE SMALL 1.50 INCH (4 CM) LONG | EA | 12 | 12 | 0.12 | 0.01 | \$171.24 | 0.12 | 0.01 | \$171.24 |
| A | 6515013204473 | FORCEPS SUTURE TY BECHERT-MCPHERS 3.30IN ANG | EA | 4 | 4 | 0.40 | 0.00 | \$435.12 | 0.40 | 0.00 | \$435.12 |

Note. A=quantity unchanged; B=quantity increase; C=quantity decrease; D=delete; E=add, deleted replacement item; F=add, new item

| Status | NSN | Supply description | UI | AS qty | ESP qty | AS wt | AS cube | AS cost | ESP wt | ESP cube | ESP cost |
|--------|---------------|------------------------------------------------------------|----|--------|---------|-------|---------|------------|--------|----------|------------|
| A | 6515011151737 | FORCEPS TISSUE BISHOP-HARMON STAIRGHT 3.3IN | EA | 4 | 4 | 0.20 | 0.20 | \$317.56 | 0.20 | 0.20 | \$317.56 |
| A | 6540003462240 | FRAME OPHTHALMIC TRIAL LENS SET W/CORNEAL SIGHTING DEVICE | EA | 1 | 1 | 0.18 | 0.10 | \$322.29 | 0.18 | 0.10 | \$322.29 |
| A | 6540014621534 | GONIOPRISM 4-MIRROR POSNER DIAGNOSTIC AND SURGICAL LENS | EA | 1 | 1 | 1.15 | 0.20 | \$434.70 | 1.15 | 0.20 | \$434.70 |
| A | 6540014618942 | HANDLE RECHARGEABLE WELCH ALLYN 3.5V OUTLET TYPE | EA | 1 | 1 | 1.15 | 0.15 | \$133.15 | 1.15 | 0.15 | \$133.15 |
| A | 6515014623484 | HANDPIECE SURGICAL APPARATUS ALGER BRUSH RUST RING REMOVER | EA | 1 | 1 | 0.55 | 0.12 | \$123.17 | 0.55 | 0.12 | \$123.17 |
| A | 6515015497951 | HEAD EXTENSION STRETCHER SURGICAL MOBILE PRE-OP/POST-OP | EA | 1 | 1 | 0.01 | 0.06 | \$265.17 | 0.01 | 0.06 | \$265.17 |
| A | 6515014593363 | HOLDER SUTURE NDL BARRAQUER 9MM CRV 5.2IN | EA | 2 | 2 | 1.10 | 0.24 | \$396.66 | 1.10 | 0.24 | \$396.66 |
| A | 6515006169173 | HOLDER SUTURE NDL CASTRO 5.5INLIGHTWEIGHT STR | EA | 3 | 3 | 0.18 | 0.01 | \$550.80 | 0.18 | 0.01 | \$550.80 |
| A | 6515014594039 | HOLDER SUTURE NDL CRS 4.3IN OSHER W/LOCK | EA | 4 | 4 | 1.24 | 0.44 | \$789.64 | 1.24 | 0.44 | \$789.64 |
| A | 6515014626134 | HOLDER SUTURE NEEDLE CRS CURVED&DELICATE JAW4.3IN | EA | 4 | 4 | 2.08 | 0.48 | \$1,112.48 | 2.08 | 0.48 | \$1,112.48 |
| A | 6515013812604 | HOOK INSERTION CATARACT LENS STORZ 45 DEG BEND 120MM | EA | 3 | 3 | 0.03 | 0.03 | \$292.11 | 0.03 | 0.03 | \$292.11 |
| A | 6515014620379 | HOOK IRIS HIRSCHMAN CURVED.75MM HOOK ANGLE 45DEG9MM | EA | 3 | 3 | 0.45 | 0.15 | \$306.03 | 0.45 | 0.15 | \$306.03 |
| A | 6515014340932 | HOOK LACRIMAL INTUBATION SET CRAWFORD DESIGN REUSABLE | EA | 4 | 4 | 0.40 | 0.60 | \$333.80 | 0.40 | 0.60 | \$333.80 |

Note. A=quantity unchanged; B=quantity increase; C=quantity decrease; D=delete; E=add, deleted replacement item; F=add, new item

| Status | NSN | Supply description | UI | AS qty | ESP qty | AS wt | AS cube | AS cost | ESP wt | ESP cube | ESP cost |
|--------|---------------|------------------------------------------------------------------|----|--------|---------|-------|---------|-------------|--------|----------|-------------|
| A | 6515014689647 | HOOK MANSON EYE DOUBLE END STRABISMUS 4.8" LONG 7MM BLADE SPREAD | EA | 2 | 2 | 1.10 | 0.03 | \$184.00 | 1.10 | 0.03 | \$184.00 |
| A | 6515003424100 | HOOK STRABISMUS GRAFFE DESIGN CRS 70 DEG BEND 5.25"LG BLUNT TIP | EA | 2 | 2 | 0.58 | 0.00 | \$58.50 | 0.58 | 0.00 | \$58.50 |
| A | 6515014828303 | HOOK STRABISMUS GREEN 130MM 7MM FLAT HANDLE | EA | 4 | 4 | 0.04 | 0.03 | \$172.00 | 0.04 | 0.03 | \$172.00 |
| A | 6515006198314 | HOOK STRABISMUS JAMESON 90 DEG 5.5IN BULB | EA | 2 | 2 | 0.08 | 0.00 | \$76.38 | 0.08 | 0.00 | \$76.38 |
| A | 6515013702232 | HOOK TENOTOMY STEVENS 4.70IN CRV TIP FLAT | EA | 6 | 6 | 3.36 | 3.36 | \$189.42 | 3.36 | 3.36 | \$189.42 |
| A | 6515011212328 | INTRODUCER & HOLDER SPH CARTER 4-5/8IN | EA | 2 | 2 | 0.12 | 0.02 | \$88.92 | 0.12 | 0.02 | \$88.92 |
| A | 6515014340933 | LACRIMAL INTUBATION SE C/O 0.25" SILASTIC TUBING SWAGED TO 0.16 | EA | 12 | 12 | 0.12 | 0.12 | \$1,383.36 | 0.12 | 0.12 | \$1,383.36 |
| A | 6650014557024 | LAMP AND FUSE PACK E.I. 6650-01-455-7280 | EA | 1 | 1 | 1.00 | 0.52 | \$139.47 | 1.00 | 0.52 | \$139.47 |
| A | 6540014587929 | LAMP MICROSCOPE HIGH RESOLUTION F/AUXILLIARY LIGHT SOURCE 3S | EA | 1 | 1 | 0.45 | 0.12 | \$154.32 | 0.45 | 0.12 | \$154.32 |
| A | 6540014618681 | LASER SYSTEM OPHTHALMIC FOR PHOTODISRUPTION CATARACT APPLICATION | EA | 1 | 1 | 25.00 | 1.25 | \$38,036.25 | 25.00 | 1.25 | \$38,036.25 |
| A | 6540014620772 | LENS CAPSULOTOMY PEYMAN DESIGN 12MM APERATURE 1.8 X MAGNIFICATIO | EA | 1 | 1 | 0.55 | 0.11 | \$579.60 | 0.55 | 0.11 | \$579.60 |
| A | 6540010787124 | LENS CONDENSING 20 DIOPTER ASPHERICAL EXAM OF OCULAR FUNDUS | EA | 1 | 1 | 0.05 | 0.01 | \$221.70 | 0.05 | 0.01 | \$221.70 |
| A | 6540010789245 | LENS CONDENSING 30 DIOPTER VOLK CONOID WHITE GLASS 31MM DIA | EA | 1 | 1 | 0.05 | 0.01 | \$333.27 | 0.05 | 0.01 | \$333.27 |

Note. A=quantity unchanged; B=quantity increase; C=quantity decrease; D=delete; E=add, deleted replacement item; F=add, new item

| Status | NSN | Supply description | UI | AS qty | ESP qty | AS wt | AS cube | AS cost | ESP wt | ESP cube | ESP cost |
|--------|---------------|---------------------------------------------------------------------|----|--------|---------|-------|---------|------------|--------|----------|------------|
| A | 6540015131948 | LENS CONDENSING INDIRECT 90D CLEAR 21.5MM DIAMETER NON-CONTACT | EA | 1 | 1 | 0.55 | 0.12 | \$333.27 | 0.55 | 0.12 | \$333.27 |
| A | 6540010784164 | LENS CONTACT 3-MIRROR GOLDMANN SMALL | EA | 1 | 1 | 0.01 | 0.01 | \$311.54 | 0.01 | 0.01 | \$311.54 |
| A | 6540003462800 | LENS DIPLOPIA TEST RED PLASTIC WITH HANDLE | EA | 1 | 1 | 0.08 | 0.01 | \$7.80 | 0.08 | 0.01 | \$7.80 |
| A | 6540014620769 | LENS IRIDOTOMY-SPHINCTEROTOMY WISE 9 MM APERTURE 2.6X MAGNIFICATION | EA | 1 | 1 | 0.55 | 0.11 | \$615.83 | 0.55 | 0.11 | \$615.83 |
| A | 6540010567377 | LENS SET TRIAL OPHTHALMIC REFRACTION SET WITHOUT RETINOSCOPE | SE | 1 | 1 | 7.12 | 8.00 | \$4,565.31 | 7.12 | 8.00 | \$4,565.31 |
| A | 6540014624703 | LENSMETER COMPACT AC/DC | EA | 1 | 1 | 0.25 | 0.01 | \$1,503.19 | 0.25 | 0.01 | \$1,503.19 |
| A | 6230000885200 | LIGHT DESK | EA | 1 | 1 | 1.70 | 0.40 | \$23.52 | 1.70 | 0.40 | \$23.52 |
| A | 6530004808286 | LIGHT DIAGNOSTIC EXAMINATION BURTON TYPE HAND | EA | 1 | 1 | 3.25 | 0.34 | \$524.45 | 3.25 | 0.34 | \$524.45 |
| A | 6540014623977 | LIGHT SOURCE AUXILIARY HI INTENSITY NON-COAXIAL MAIN POWER OR12V | EA | 1 | 1 | 1.25 | 0.25 | \$760.73 | 1.25 | 0.25 | \$760.73 |
| A | 6515014620386 | LOOP EYE LENS KIRBY EXPRESSOR HOOK AND LOOP 5MM W X 10MM L LOOP | EA | 2 | 2 | 0.30 | 0.10 | \$222.92 | 0.30 | 0.10 | \$222.92 |
| A | 6540015486987 | LOUPES SURGICAL ERGO TI FRAME 2.5X POWER GALILEAN TELESCOPE | EA | 1 | 1 | 5.00 | 0.80 | \$1,709.53 | 5.00 | 0.80 | \$1,709.53 |
| A | 6540013496148 | MAGNET EYE NONELECTRIC W/AUTOCLAVABLE PLASTIC TRAY 20GAGE | EA | 1 | 1 | 1.00 | 0.21 | \$862.16 | 1.00 | 0.21 | \$862.16 |
| A | 6515015023447 | MANIPULATOR NUCLEUS DRYDALE 110MM LG RD KNURLED HANDLE | EA | 2 | 2 | 0.36 | 0.20 | \$541.92 | 0.36 | 0.20 | \$541.92 |
| A | 6515015207281 | MANIPULATOR NUCLEUS DRYDALE 110MM RD KNURLED HANDLE | EA | 1 | 1 | 0.18 | 0.10 | \$270.96 | 0.18 | 0.10 | \$270.96 |

Note. A=quantity unchanged; B=quantity increase; C=quantity decrease; D=delete; E=add, deleted replacement item; F=add, new item

| Status | NSN | Supply description | UI | AS qty | ESP qty | AS wt | AS cube | AS cost | ESP wt | ESP cube | ESP cost |
|--------|---------------|------------------------------------------------------------------|----|--------|---------|--------|---------|-------------|--------|----------|-------------|
| A | 6540014934563 | MICROSCOPE ASSISTANT 8X MAGNIFICATION E.I. 6540-01-491-9995 | EA | 1 | 1 | 1.25 | 0.25 | \$2,002.16 | 1.25 | 0.25 | \$2,002.16 |
| A | 6540014919995 | MICROSCOPE SURGICAL PORTABLE 37"LG 90/260V 47/440HZ | EA | 1 | 1 | 292.20 | 12.62 | \$14,490.00 | 292.20 | 12.62 | \$14,490.00 |
| A | 6530014981941 | MOBILE SURGICAL STRETCHER WRIST REST F/USE DURING EYE SURGERY | EA | 1 | 1 | 3.25 | 0.25 | \$369.50 | 3.25 | 0.25 | \$369.50 |
| A | 6515014626608 | NEEDLE FASCIA | EA | 2 | 2 | 1.10 | 0.24 | \$250.38 | 1.10 | 0.24 | \$250.38 |
| A | 1670009962780 | NET CARGO TIE DOWN 5.5FTX14.5 | EA | 2 | 2 | 40.00 | 10.00 | \$284.00 | 40.00 | 10.00 | \$284.00 |
| A | 1670009694103 | NET CARGO TIE DOWN 96IN HT 10,000LB CAP | EA | 1 | 1 | 20.00 | 5.00 | \$142.00 | 20.00 | 5.00 | \$142.00 |
| A | 6540011397611 | OCCLUDER EYE PLASTIC 7 IN DOUBLE-ENDED COMBINATION PIN HOLE | EA | 1 | 1 | 0.01 | 0.01 | \$41.30 | 0.01 | 0.01 | \$41.30 |
| A | 6540014142056 | OPHTHALMOSCOPE COAXIAL HALOGEN 16 APERATURES | EA | 1 | 1 | 1.15 | 0.20 | \$255.31 | 1.15 | 0.20 | \$255.31 |
| A | 6540014624726 | OPHTHALMOSCOPE HEINE SIGMA 150 SPECTACLE MOUNTED INDIRECT | EA | 1 | 1 | 1.15 | 0.15 | \$1,552.60 | 1.15 | 0.15 | \$1,552.60 |
| A | 6540013862980 | OPHTHALMOSCOPE LASER INDIRECT400MICRONS SPOT SZ115V50/60HZ AC25W | EA | 1 | 1 | 13.00 | 1.00 | \$10,455.98 | 13.00 | 1.00 | \$10,455.98 |
| A | 1670008204896 | PALLET CARGO AIRCRAFT 108INX88IN | EA | 1 | 1 | 200.00 | 9.00 | \$856.96 | 200.00 | 9.00 | \$856.96 |
| A | 6540014215795 | PHOROMETER OPHTHALM | EA | 1 | 1 | 1.00 | 0.06 | \$6,035.81 | 1.00 | 0.06 | \$6,035.81 |
| A | 6540008776464 | PHOROPTER MINUS CYLINDRICAL LENS TYPE | EA | 1 | 1 | 8.50 | 1.10 | \$4,774.92 | 8.50 | 1.10 | \$4,774.92 |
| A | 6540002998186 | PLATE SET PSEUDOISOCROMATIC PLATE QUANTITY 14 4.5IN | SE | 1 | 1 | 1.34 | 0.10 | \$186.43 | 1.34 | 0.10 | \$186.43 |
| A | 6530014586961 | PLATE TABLE MICROSCOPE TASP25A | EA | 1 | 1 | 0.25 | 0.12 | \$72.45 | 0.25 | 0.12 | \$72.45 |

Note. A=quantity unchanged; B=quantity increase; C=quantity decrease; D=delete; E=add, deleted replacement item; F=add, new item

| Status | NSN | Supply description | UI | AS qty | ESP qty | AS wt | AS cube | AS cost | ESP wt | ESP cube | ESP cost |
|--------|---------------|--------------------------------------------------------------------------|----|--------|---------|-------|---------|-------------|--------|----------|-------------|
| A | 6540014592075 | POWER SUPPLY OPHTHALMOSCOPE U/W 6540014592069 DETACH POWER PACK | EA | 1 | 1 | 0.55 | 0.12 | \$592.64 | 0.55 | 0.12 | \$592.64 |
| A | 6540003566050 | PRISM BAR OPHTHALMOL BERENS HORIZONTAL IMAGE DISPLACE 15 PRISMS | EA | 1 | 1 | 0.56 | 0.14 | \$142.00 | 0.56 | 0.14 | \$142.00 |
| A | 6540003566000 | PRISM BAR OPHTHALMOL BERENS VERTICAL IMAGE DISPLACE 14 PRISMS | EA | 1 | 1 | 0.53 | 0.14 | \$140.55 | 0.53 | 0.14 | \$140.55 |
| A | 6515012064706 | PROBE LACHRYMAL BOWMAN STAINLESS STEEL 141MM | EA | 4 | 4 | 0.16 | 0.01 | \$24.00 | 0.16 | 0.01 | \$24.00 |
| A | 6515005261259 | PROBE LACHRYMAL BOWMAN STERLING SILVER SZ 00 | EA | 4 | 4 | 1.24 | 0.00 | \$56.80 | 1.24 | 0.00 | \$56.80 |
| A | 6515011398764 | PROBE LACHRYMAL WORST PIGTAIL DBL-ENDED | EA | 2 | 2 | 0.02 | 0.00 | \$129.00 | 0.02 | 0.00 | \$129.00 |
| A | 6530014982649 | RACK CASSETTE HEAT RESIST PLAS F/USE IN PRESTIGE 21006 AUTOCLAVE | EA | 1 | 1 | 2.25 | 0.25 | \$166.71 | 2.25 | 0.25 | \$166.71 |
| A | 6515014654455 | RADIOSURGICAL CAUTERY SURGIRON FULLY FILTERED | EA | 1 | 1 | 12.00 | 1.20 | \$5,562.71 | 12.00 | 1.20 | \$5,562.71 |
| A | 6540014624634 | REFRACTOR AND KERATOMETER AUTOMATIC RETINOMAX K-PLUS HAND- HELD | EA | 1 | 1 | 0.15 | 0.01 | \$36,400.72 | 0.15 | 0.01 | \$36,400.72 |
| A | 6540014559258 | RETINOSCOPE 3.5V STREAK EXTERNAL FOCUSING SLEEVE HALOGEN | EA | 1 | 1 | 1.00 | 0.03 | \$498.18 | 1.00 | 0.03 | \$498.18 |
| A | 6515014605954 | RETRACTOR EYELID | EA | 2 | 2 | 0.70 | 0.22 | \$65.26 | 0.70 | 0.22 | \$65.26 |
| A | 6515012463823 | RETRACTOR EYELID DESMARRES SIZE 0 SOLID BLADE | EA | 2 | 2 | 0.10 | 0.00 | \$57.72 | 0.10 | 0.00 | \$57.72 |
| A | 6515012109518 | RETRACTOR LACHRYMAL SAC SS 10MM | EA | 2 | 2 | 0.12 | 0.00 | \$58.00 | 0.12 | 0.00 | \$58.00 |

Note. A=quantity unchanged; B=quantity increase; C=quantity decrease; D=delete; E=add, deleted replacement item; F=add, new item

| Status | NSN | Supply description | UI | AS qty | ESP qty | AS wt | AS cube | AS cost | ESP wt | ESP cube | ESP cost |
|--------|-------------------|-------------------------------------------------------------------|----|--------|---------|--------|---------|-------------|--------|----------|-------------|
| A | 6515011642627 | RETRACTOR NASAL CONVERSE 0.688X0.312" R ANGLE AT DISTAL END | EA | 1 | 1 | 0.04 | 0.02 | \$37.17 | 0.04 | 0.02 | \$37.17 |
| A | 6515011212324 | RETRACTOR ORBITAL SCHEPENS 14MM 6IN | EA | 2 | 2 | 0.02 | 0.00 | \$111.30 | 0.02 | 0.00 | \$111.30 |
| A | 6515014607016 | RONGEUR LAMINECT UP-CUT 3MM 40 DEG | EA | 2 | 2 | 1.10 | 0.24 | \$834.88 | 1.10 | 0.24 | \$834.88 |
| A | 6515014607257 | RONGEUR LAMINECT UP-CUT 3MM 40 DEG | EA | 2 | 2 | 1.10 | 0.22 | \$794.30 | 1.10 | 0.22 | \$794.30 |
| A | 8340NCM0607 39 | ROPAK CONTAINER LID 40X48 | EA | 7 | 7 | 35.00 | 7.00 | \$261.38 | 35.00 | 7.00 | \$261.38 |
| A | 8340NCM0200 30 | ROPAK CONTAINER TWO DROP DOORS 84 | EA | 7 | 7 | 175.00 | 105.00 | \$1,715.00 | 175.00 | 105.00 | \$1,715.00 |
| A | 6540011654987 | RULER MEASURING PUPILLARY DISTANCE 6X.50IN | EA | 2 | 2 | 0.20 | 0.04 | \$1.76 | 0.20 | 0.04 | \$1.76 |
| A | 6540014863181 | SCANNER ULTRASONIC OCULAR | EA | 1 | 1 | 18.75 | 1.24 | \$22,131.30 | 18.75 | 1.24 | \$22,131.30 |
| A | 6515011249775 | SCISSOR CAPSULOTOMY VANNAS 3IN CRS | EA | 3 | 3 | 0.03 | 0.00 | \$449.25 | 0.03 | 0.00 | \$449.25 |
| A | 6515014620344 | SCISSOR CORNEAL OSHER UNI 119MM THIN CURVE | EA | 2 | 2 | 0.70 | 0.03 | \$300.44 | 0.70 | 0.03 | \$300.44 |
| A | 6515014621189 | SCISSOR CORNEAL SECT MANSON-AEBLI L ANG | EA | 2 | 2 | 1.00 | 0.03 | \$334.48 | 1.00 | 0.03 | \$334.48 |
| A | 6515014620673 | SCISSOR CORNEAL SECT MANSON-AEBLI R ANG | EA | 2 | 2 | 0.44 | 0.18 | \$340.40 | 0.44 | 0.18 | \$340.40 |
| A | 6515014620672 | SCISSOR CORNEAL SECT MCPHER-CASTRO L ANG | EA | 2 | 2 | 0.44 | 0.18 | \$356.86 | 0.44 | 0.18 | \$356.86 |
| A | 6515014621193 | SCISSOR CORNEAL SECT MCPHER-CASTRO R ANG | EA | 2 | 2 | 1.00 | 0.03 | \$356.86 | 1.00 | 0.03 | \$356.86 |
| A | 6515011212345 | SCISSOR ENUCLEATION MED CRV 5IN BLUNT | EA | 2 | 2 | 0.20 | 0.00 | \$110.76 | 0.20 | 0.00 | \$110.76 |
| A | 6515011265041 | SCISSOR SUTURE WESTCOTT DESIGN 122MM | EA | 2 | 2 | 0.16 | 0.01 | \$329.88 | 0.16 | 0.01 | \$329.88 |

Note. A=quantity unchanged; B=quantity increase; C=quantity decrease; D=delete; E=add, deleted replacement item; F=add, new item

| Status | NSN | Supply description | UI | AS qty | ESP qty | AS wt | AS cube | AS cost | ESP wt | ESP cube | ESP cost |
|--------|---------------|---------------------------------------------------------------|----|--------|---------|--------|---------|-------------|--------|----------|-------------|
| A | 6515012399806 | SCISSOR TENOT POTTS 7IN CRVD BLADE | EA | 4 | 4 | 0.24 | 0.01 | \$449.36 | 0.24 | 0.01 | \$449.36 |
| A | 6515006198306 | SCISSOR TENOT WESTCOT 4.37-4.62IN CRV BLNT | EA | 10 | 10 | 0.60 | 0.02 | \$2,047.60 | 0.60 | 0.02 | \$2,047.60 |
| A | 6515011398288 | SCISSOR TENOT WESTCOT 9MM R HAND CRV SHARP | EA | 2 | 2 | 0.02 | 0.00 | \$416.88 | 0.02 | 0.00 | \$416.88 |
| A | 6515012470998 | SCISSORS IRIS STORZ 105MM LG T25MM PT | EA | 2 | 2 | 0.24 | 0.20 | \$223.70 | 0.24 | 0.20 | \$223.70 |
| A | 6540014599226 | SLIT LAMP OPHTHALMIC | EA | 2 | 2 | 6.00 | 1.75 | \$11,620.98 | 6.00 | 1.75 | \$11,620.98 |
| A | 6515012466683 | SPECULUM EYE BARRAQUER STEEL ADLT 14 MM | EA | 5 | 5 | 0.50 | 0.03 | \$78.00 | 0.50 | 0.03 | \$78.00 |
| A | 6515012056824 | SPECULUM EYE BARRAQUER STEEL CHILD 19MM | EA | 2 | 2 | 1.04 | 0.05 | \$12.50 | 1.04 | 0.05 | \$12.50 |
| A | 6515011397666 | SPECULUM EYE LANCASTER 3INNON-MAGNETIC CRS | EA | 2 | 2 | 0.20 | 0.02 | \$115.44 | 0.20 | 0.02 | \$115.44 |
| A | 6515014605975 | SPECULUM NASAL STORZ 5.1IN 30MM THIN WALL | EA | 4 | 4 | 2.20 | 0.48 | \$186.48 | 2.20 | 0.48 | \$186.48 |
| A | 6515011210684 | SPOON ENUCLEATION WELLS PASSIV CRS | EA | 2 | 2 | 0.18 | 0.01 | \$106.74 | 0.18 | 0.01 | \$106.74 |
| A | 6540015053800 | STAND TRIPOD FOR PHOROPTER | EA | 1 | 1 | 25.00 | 2.80 | \$925.33 | 25.00 | 2.80 | \$925.33 |
| D | 6530014982642 | STERILIZER SURGICAL INSTRUMENT 120/220V | EA | 1 | 0 | 45.00 | 1.25 | \$1,593.90 | 0.00 | 0.00 | 0.00 |
| A | 6530014979938 | STOOL EXAMINATION 18-24.5INX15IN 4LEG ADJ W/FOOT RING | EA | 2 | 2 | 7.70 | 4.00 | \$453.08 | 7.70 | 4.00 | \$453.08 |
| A | 6530014667131 | STRETCHER SURGICAL EASY ROLLING CASTERS 4 WHEEL BRAKE & STEER | EA | 1 | 1 | 500.00 | 30.00 | \$10,193.72 | 500.00 | 30.00 | \$10,193.72 |
| A | 6540NCM991130 | SURGICAL LOUPES 2.75X | EA | 1 | 1 | 0.25 | 0.10 | \$1,483.00 | 0.25 | 0.10 | \$1,483.00 |
| D | 6515008273104 | SYRINGE HYPO GP 3ML CAP SGL SCALE BOROSILICATE | EA | 2 | 0 | 0.06 | 0.02 | \$115.00 | 0.00 | 0.00 | 0.00 |

Note. A=quantity unchanged; B=quantity increase; C=quantity decrease; D=delete; E=add, deleted replacement item; F=add, new item

| Status | NSN | Supply description | UI | AS qty | ESP qty | AS wt | AS cube | AS cost | ESP wt | ESP cube | ESP cost |
|--------|---------------|------------------------------------------------------------------|----|--------|---------|--------|---------|-------------|--------|----------|-------------|
| | | NEEDLE LOCK TIP | | | | | | | | | |
| A | 7105002699275 | TABLE FOLDING TENT OD 35X27X23IN | EA | 1 | 1 | 44.00 | 3.00 | \$317.57 | 44.00 | 3.00 | \$317.57 |
| A | 6650014557562 | TILT ADAPTER MICROSCOPE ALLOWS OPTICAL HEAD TILT AWAY F/VERTICAL | EA | 1 | 1 | 50.00 | 4.00 | \$248.87 | 50.00 | 4.00 | \$248.87 |
| A | 6540014587838 | TONOMETER OPHTHALMIC HAND HELD PORTABLE POCKE | EA | 1 | 1 | 1.00 | 0.02 | \$1,834.00 | 1.00 | 0.02 | \$1,834.00 |
| A | 6540011458776 | TOOL KIT OPTICIAN | SE | 1 | 1 | 4.00 | 0.12 | \$282.56 | 4.00 | 0.12 | \$282.56 |
| A | 6540014618991 | TRANSILLUMINATOR HE WELCH ALLYN 3.5 VOLT FINNOFF | EA | 1 | 1 | 1.15 | 0.15 | \$144.76 | 1.15 | 0.15 | \$144.76 |
| D | 6530013207947 | TRAY INSTRUMENT ANODIZED ALUMINUM 30ML CAPACITY 8.25X8.25X1.75" | EA | 1 | 0 | 1.90 | 1.00 | \$220.25 | 0.00 | 0.00 | 0.00 |
| D | 6530011690300 | TRAY INSTRUMENT CORROSION-RESISTING STEEL 8.25X8.25X1.25 INCH | EA | 2 | 0 | 3.94 | 0.14 | \$547.14 | 0.00 | 0.00 | 0.00 |
| D | 6530014602264 | TRAY INSTRUMENT MICROSURG CAP 50-60 INSTR 26.7X50.8X6.35CM | EA | 2 | 0 | 2.24 | 0.04 | \$927.36 | 0.00 | 0.00 | 0.00 |
| A | 6515012406869 | TUBE SUCTION SURG FRAZIER ANGULAR SMALL SZ NO 21 8FR STER | EA | 2 | 2 | 0.94 | 0.12 | \$28.98 | 0.94 | 0.12 | \$28.98 |
| A | 6515013867864 | TUBING ASSY OPHTH 23GA THIN WALL SIMCOE DOUBLE-BARRELED I/A UNIT | EA | 3 | 3 | 0.30 | 0.03 | \$352.62 | 0.30 | 0.03 | \$352.62 |
| A | 6540014606934 | VIDEO DOCUMENTATION SYSTEM W/ZEISS BEAM SPLITTER COMPACT CAMERA | EA | 1 | 1 | 120.00 | 125.00 | \$27,716.76 | 120.00 | 125.00 | \$27,716.76 |
| A | 6515015376741 | VITRECTOMY SYSTEM ANTERIOR WHITESTAR | EA | 1 | 1 | 8.00 | 0.56 | \$70,130.15 | 8.00 | 0.56 | \$70,130.15 |
| A | 6540002999590 | WARMER PLASTIC SPECTACLE FRAME 115 VOLT 60 HERTZ AC 100 WATTS | EA | 1 | 1 | 4.19 | 0.80 | \$346.86 | 4.19 | 0.80 | \$346.86 |

Note. A=quantity unchanged; B=quantity increase; C=quantity decrease; D=delete; E=add, deleted replacement item; F=add, new item

| Status | NSN | Supply description | UI | AS qty | ESP qty | AS wt | AS cube | AS cost | ESP wt | ESP cube | ESP cost |
|-----------------|---------------|--------------------------------------------------------------------|----|--------|---------|-------|---------|------------|--------|----------|----------|
| A | 6540014629952 | WASHER LENS 4 METER ROLL REGULAR NO. 50 | EA | 3 | 3 | 3.45 | 0.45 | \$16.29 | 3.45 | 0.45 | \$16.29 |
| A | 6530012460156 | WRAPPER STERILIZATION 54X54IN CTN GREEN 6S | PG | 1 | 1 | 9.18 | 0.60 | \$97.05 | 9.18 | 0.60 | \$97.05 |
| A | 6530012442776 | WRAPPER STERILIZATION COTTON 24X24IN GREEN 6S | PG | 1 | 1 | 1.98 | 0.10 | \$28.30 | 1.98 | 0.10 | \$28.30 |
| Medicine | | | | | | | | | | | |
| C | 6505006640857 | ACETAZOLAMIDE TABLETS USP 250MG 100S | BT | 2 | 1 | 0.40 | 1.62 | \$19.62 | 0.20 | 0.81 | \$9.81 |
| C | 6505015254068 | ACETYLCHOLINE CHLORIDE FOR OPHTHALMIC SOL USP 20MG 2ML 1% | BT | 24 | 14 | 13.20 | 2.88 | \$331.44 | 7.70 | 1.68 | \$193.34 |
| A | 6505010561950 | AMIKACIN SULFATE INJECTION USP 4ML VIAL 10 VIALS PER PACKAGE | PG | 1 | 1 | 0.55 | 0.10 | \$110.43 | 0.55 | 0.10 | \$110.43 |
| D | 6505009617486 | ARTIFICIAL TEARS 15 ML | BT | 36 | 0 | 3.60 | 3.60 | \$57.96 | 0.00 | 0.00 | 0.00 |
| C | 6505005824735 | ATROPINE SULFATE OPHTHALMIC SOL 1% 15ML BT | BT | 5 | 1 | 0.40 | 0.02 | \$17.85 | 0.08 | 0.00 | \$3.57 |
| C | 6505005824190 | BACITRACIN OPHTHALMIC OINT 0.125OZ TU | TU | 60 | 43 | 1.80 | 48.88 | \$363.60 | 1.29 | 35.03 | \$260.58 |
| B | 6505011277946 | BUPIVACAINE HYDROCH INJ .50% 30ML VI 10S | PG | 6 | 10 | 11.40 | 1.20 | \$128.70 | 19.00 | 2.00 | \$214.50 |
| D | 6505014802501 | CEFAZOLIN SODIUM 1GM 10ML VI 25S | PG | 2 | 0 | 2.00 | 0.60 | \$87.28 | 0.00 | 0.00 | 0.00 |
| B | 6505013519272 | CIPROFLOXACIN HCL OPHTHALMIC SOL 0.3% 5ML 1S | BT | 5 | 11 | 3.25 | 0.06 | \$128.95 | 7.15 | 0.13 | \$283.69 |
| C | 6505014630173 | CONTACT LENS CLEANING SOLUTION MULTI-PURPOSE 12 OZ BOTTLE | BT | 80 | 12 | 44.00 | 9.60 | \$1,293.60 | 6.60 | 1.44 | \$194.04 |
| B | 6505013396922 | CONTACT LENS SALINE SOLUTION 12FL OZ BOTTLE | BT | 1 | 3 | 1.50 | 0.03 | \$3.83 | 4.50 | 0.09 | \$11.49 |

Note. A=quantity unchanged; B=quantity increase; C=quantity decrease; D=delete; E=add, deleted replacement item; F=add, new item

| Status | NSN | Supply description | UI | AS qty | ESP qty | AS wt | AS cube | AS cost | ESP wt | ESP cube | ESP cost |
|--------|---------------|------------------------------------------------------------------------|----|--------|---------|-------|---------|----------|--------|----------|----------|
| C | 6505002999666 | CYCLOPENTOLAT HYDROCH OPHTH SOLUTION 1% 15ML | BT | 10 | 5 | 1.00 | 1.00 | \$11.00 | 0.50 | 0.50 | \$5.50 |
| A | 6505009444126 | DEXAMETHASONE SODIUM PHOSPHATE 4MG/ML 1ML 25S | PG | 1 | 1 | 1.35 | 0.50 | \$16.30 | 1.35 | 0.50 | \$16.30 |
| C | 6505002998760 | EPINEPHRINE INJ AQUEOUS 1MG/1ML AMP 25S | PG | 2 | 1 | 0.30 | 0.20 | \$79.68 | 0.15 | 0.10 | \$39.84 |
| D | 6505015032390 | FLUORESCEIN SODIUM OPHTHALMIC STRIPS 1MG 100S | PG | 3 | 0 | 0.30 | 0.30 | \$30.42 | 0.00 | 0.00 | 0.00 |
| D | 6505001538220 | GLYCERIN USP 1 LB (453.6 GRAM) | BT | 5 | 0 | 5.00 | 1.50 | \$32.90 | 0.00 | 0.00 | 0.00 |
| C | 6505007644011 | HOMATROPINE HYDROBROMIDE OPHTH SOLUTION 5ML | BT | 30 | 7 | 0.90 | 3.00 | \$489.00 | 0.21 | 0.70 | \$114.10 |
| C | 6505011472082 | HYDROXYPROPYL METHYLCELLULOSE OPHTHALMIC SOLUTION USP 15ML BT | BT | 6 | 2 | 0.36 | 0.06 | \$39.12 | 0.12 | 0.02 | \$13.04 |
| C | 6505014562382 | LIDOCAINE & EPINEPHRINE INJE 50 ML VIAL | VI | 10 | 4 | 5.50 | 1.20 | \$50.60 | 2.20 | 0.48 | \$20.24 |
| D | 6505005986117 | LIDOCAINE HCL INJ 2% 20MG/ML 20ML | BT | 2 | 0 | 1.00 | 1.39 | \$18.46 | 0.00 | 0.00 | 0.00 |
| D | 6505005986116 | LIDOCAINE HYDROCH INJ 1.0%/ML 50ML | BT | 12 | 0 | 2.99 | 1.20 | \$230.64 | 0.00 | 0.00 | 0.00 |
| D | 6505001507622 | LUBRICANT OPHTHALMIC TOPICAL 1/8OZ | TU | 4 | 0 | 0.40 | 0.40 | \$43.32 | 0.00 | 0.00 | 0.00 |
| A | 6505011253253 | MANNITOL INJ 25% 50ML SINGLE DOSE VI 25S | PG | 1 | 1 | 0.19 | 0.10 | \$35.91 | 0.19 | 0.10 | \$35.91 |
| A | 6505011080808 | METHYLPREDNISOLONE SODIUM SUCCINATE FOR INJECTION USP 1000MG | CO | 20 | 20 | 2.40 | 2.00 | \$443.80 | 2.40 | 2.00 | \$443.80 |
| D | 6505015090677 | MOXIFLOX OPHTHAHLORIDE 5MG/ML 0.5% 3ML | BT | 4 | 0 | 0.40 | 0.40 | \$508.04 | 0.00 | 0.00 | 0.00 |

Note. A=quantity unchanged; B=quantity increase; C=quantity decrease; D=delete; E=add, deleted replacement item; F=add, new item

| Status | NSN | Supply description | UI | AS qty | ESP qty | AS wt | AS cube | AS cost | ESP wt | ESP cube | ESP cost |
|--------|---------------|------------------------------------------------------------------|----|--------|---------|-------|---------|------------|--------|----------|------------|
| A | 6505011434642 | NEOMYCIN&POLYMYXIN B SULFATES&DEXAMETHASONE OPHTH OINT USP 3.5GM | TU | 12 | 12 | 0.36 | 0.12 | \$800.76 | 0.36 | 0.12 | \$800.76 |
| C | 6505011434643 | NEOMYCIN&POLYMYXIN B SULFATES&GRAMICIDIN OPHTH SOL10ML | BT | 15 | 12 | 0.60 | 0.15 | \$269.55 | 0.48 | 0.12 | \$215.64 |
| C | 6505011197693 | OPHTHALMIC IRRIGATING SOL 15-18ML BT 36S | PG | 2 | 1 | 4.43 | 0.34 | \$122.06 | 2.21 | 0.17 | \$61.03 |
| C | 6505011197694 | OPHTHALMIC IRRIGATING SOLUTION 500ML BOTTLE W/HANGING DEVICE 6S | PG | 5 | 1 | 63.65 | 5.00 | \$153.00 | 12.73 | 1.00 | \$30.60 |
| C | 6505002719220 | PHENYLEPHRINE HCL OPHTHALMIC SOL 25% 15 ML | BT | 15 | 3 | 1.05 | 0.03 | \$233.55 | 0.21 | 0.01 | \$46.71 |
| C | 6505011533257 | PHENYLEPHRINE HYDROCHLORIDE OPHTHALMIC SOLUTION USP 10% 5ML BT | BT | 5 | 1 | 0.05 | 0.05 | \$65.20 | 0.01 | 0.01 | \$13.04 |
| C | 6505005824679 | PILOCARPINE HYDROCHLORIDE OPHTHALMIC SOLUTION USP 2% 15 ML | BT | 5 | 1 | 0.65 | 0.05 | \$10.85 | 0.13 | 0.01 | \$2.17 |
| A | 6505009947224 | POVIDONE-IODINE SOLUTION 7.5% 1GL | BT | 1 | 1 | 9.00 | 1.00 | \$24.95 | 9.00 | 1.00 | \$24.95 |
| B | 6505012935688 | PREDNISOLONE ACETATE AND GENTAMICIN SULFATE OPHTHALMIC SUSP 5ML | BT | 15 | 16 | 0.15 | 0.15 | \$349.65 | 0.16 | 0.16 | \$372.96 |
| C | 6505001335843 | PREDNISOLONE ACETATE OPHTHALMIC 1% 5 ML | BT | 50 | 13 | 5.00 | 5.00 | \$1,238.50 | 1.30 | 1.30 | \$322.01 |
| D | 6505012870626 | SOD CHLOR INJ 0.9% 10ML VI 25S | PG | 1 | 0 | 0.25 | 0.00 | \$6.77 | 0.00 | 0.00 | 0.00 |
| C | 6505013637692 | SODIUM CHONDROITIN AND SODIUM HYALURONATE 0.5ML | BT | 6 | 4 | 5.10 | 0.60 | \$1,981.92 | 3.40 | 0.40 | \$1,321.28 |

Note. A=quantity unchanged; B=quantity increase; C=quantity decrease; D=delete; E=add, deleted replacement item; F=add, new item

| Status | NSN | Supply description | UI | AS qty | ESP qty | AS wt | AS cube | AS cost | ESP wt | ESP cube | ESP cost |
|--------------------|---------------|--------------------------------------------------------------------|----|--------|---------|-------|---------|----------|--------|----------|----------|
| | | SYRINGE 6S | | | | | | | | | |
| C | 6505010238713 | SULFACETAMIDE SOD OPHTHAL SOL 15ML | BT | 15 | 11 | 1.05 | 1.50 | \$42.45 | 0.77 | 1.10 | \$31.13 |
| D | 6505005824737 | TETRACAINE HYDROCH OPPTH SOLUTION 0.5% 15 ML | BT | 5 | 0 | 1.00 | 0.73 | \$9.25 | 0.00 | 0.00 | 0.00 |
| D | 6505010696519 | TIMOLOL MALEATE OPHTHALMIC SOLUTION 5ML | BT | 5 | 0 | 0.50 | 0.50 | \$7.05 | 0.00 | 0.00 | 0.00 |
| A | 6505011428314 | TRIFLURIDINE OPHTHALMIC SOL 1% BT 7.5ML | BT | 1 | 1 | 0.05 | 0.01 | \$75.61 | 0.05 | 0.01 | \$75.61 |
| B | 6505008718289 | TROPICAMIDE OPHTHALMIC SOLUTION USP 1% 15 ML | BT | 4 | 5 | 0.24 | 0.04 | \$21.72 | 0.30 | 0.05 | \$27.15 |
| A | 6505000655220 | VANCOMYCIN HYDROCHLORIDE EQUIV 500 MG OF VANCOMYCIN | VI | 1 | 1 | 0.01 | 0.01 | \$28.75 | 0.01 | 0.01 | \$28.75 |
| Consumables | | | | | | | | | | | |
| D | 6515014526940 | ADMINISTRATION SET INFUSION PUMP PRIMAR CONTINUOUS FLOW SOL | PG | 1 | 0 | 3.00 | 0.70 | \$209.41 | 0.00 | 0.00 | 0.00 |
| C | 6515009051473 | APPLICATOR PLAS/WOOD ROD 6IN STER 2000S | PG | 3 | 1 | 1.95 | 1.95 | \$123.54 | 0.65 | 0.65 | \$41.18 |
| D | 6510014970960 | APPLICATOR POVIDONE- IODINE IMPREGNATED | EA | 1 | 0 | 0.55 | 0.12 | \$5.67 | 0.00 | 0.00 | 0.00 |
| D | 6515012346838 | APPLICATOR WOOD OR PLASTIC 6" LG SQUARED OFF DISPOSABLE 100S | PG | 6 | 0 | 0.60 | 1.20 | \$3.12 | 0.00 | 0.00 | 0.00 |

Note. A=quantity unchanged; B=quantity increase; C=quantity decrease; D=delete; E=add, deleted replacement item; F=add, new item

| Status | NSN | Supply description | UI | AS qty | ESP qty | AS wt | AS cube | AS cost | ESP wt | ESP cube | ESP cost |
|--------|---------------|----------------------------------------------------------------------|----|--------|---------|--------|---------|----------|--------|----------|----------|
| D | 8105011958730 | BAG PLASTIC 250S | BX | 1 | 0 | 15.00 | 1.15 | \$17.16 | 0.00 | 0.00 | 0.00 |
| C | 6515011398405 | BLADE SURG KNIFE BEAVER M 3MM PRE-SET 6S | PG | 6 | 4 | 0.06 | 0.01 | \$168.48 | 0.04 | 0.00 | \$112.32 |
| D | 6530013813991 | BRUSH SURG SCRUB BRISTLE & PLAS POLYUR 3X2" POV-IOD IMPREG 30S | EA | 2 | 0 | 6.04 | 0.72 | \$41.38 | 0.00 | 0.00 | 0.00 |
| B | 6515010227417 | CAUTERY BTRY LOW T FINE PT 1.5V AA HDL 10S | PG | 2 | 3 | 2.40 | 0.14 | \$105.84 | 3.60 | 0.21 | \$158.76 |
| D | 8465009997905 | COVER PERSONNEL ID TAG PLAS FLESH COLOR 2.312INX1.344IN | EA | 1 | 0 | 0.01 | 0.01 | \$0.22 | 0.00 | 0.00 | 0.00 |
| C | 6530011511831 | DRAPE SURG PLAS DISP STER 51X47IN ADH AREA OPHTHAMOLOGY 40S | PG | 2 | 1 | 4.00 | 0.40 | \$411.12 | 2.00 | 0.20 | \$205.56 |
| C | 6530010470176 | DRAPE SURG STER INDV PKGD 15.6 X 15.6 10S | PG | 4 | 3 | 1.48 | 0.47 | \$119.32 | 1.11 | 0.35 | \$89.49 |
| D | 6515013773836 | EXTENSION SET IV ADMIN 30" LG W/ROLLER OR SLIDE-TYPE CLAMP 48S | PG | 1 | 0 | 0.03 | 0.03 | \$39.08 | 0.00 | 0.00 | 0.00 |
| C | 6540010992321 | FRAME SPECTACLE BAYONET TEMPLES 42 BY 52 EYE 20 BRIDGE | EA | 100 | 1 | 4.00 | 6.00 | \$768.00 | 0.04 | 0.06 | \$7.68 |
| C | 6540011074509 | FRAME SPECTACLE NYLON NON-REFLECTIVE 52MM DIAMETER 22MM BRIDGE | EA | 100 | 1 | 5.00 | 2.00 | \$733.00 | 0.05 | 0.02 | \$7.33 |
| D | 6515011498841 | GLOVES SURGEONS GEN SURG SZ 7.5 RBBR PREPOWDERED | PG | 1 | 0 | 100.00 | 27.50 | \$770.50 | 0.00 | 0.00 | 0.00 |

Note. A=quantity unchanged; B=quantity increase; C=quantity decrease; D=delete; E=add, deleted replacement item; F=add, new item

| Status | NSN | Supply description | UI | AS qty | ESP qty | AS wt | AS cube | AS cost | ESP wt | ESP cube | ESP cost |
|--------|---------------|-------------------------------------------------------------------|----|--------|---------|-------|---------|------------|--------|----------|------------|
| | | STER DISP 50S | | | | | | | | | |
| D | 6515015196337 | GLOVES SURGEONS LATEX & POWDER FREE SZ 7 STER 200S | PG | 1 | 0 | 5.00 | 0.50 | \$569.52 | 0.00 | 0.00 | 0.00 |
| C | 6515012593002 | IMPLANT ORBITAL 20MM BOILABLE LIGHTWEIGHT | EA | 12 | 3 | 0.60 | 0.01 | \$346.32 | 0.15 | 0.00 | \$86.58 |
| C | 6515012052371 | IMPLANT ORBITAL SILICONE RUB 22MM DIA EYE | EA | 3 | 2 | 0.48 | 0.08 | \$15.00 | 0.32 | 0.05 | \$10.00 |
| C | 6515013677741 | IMPLANT ORBITAL SPHERE 16MM DIAMETER PLASTIC | EA | 3 | 2 | 0.57 | 0.03 | \$12.00 | 0.38 | 0.02 | \$8.00 |
| C | 6515013765190 | IMPLANT ORBITAL SPHERE 18MM POLY METHACRYLATE | EA | 3 | 2 | 0.57 | 0.03 | \$49.41 | 0.38 | 0.02 | \$32.94 |
| A | 6515009786133 | KNIFE GENERAL SURG 1.50" BLADE LG SIZE 15 BLADES SS/CS DISP 100S | PG | 2 | 2 | 0.02 | 0.00 | \$23.48 | 0.02 | 0.00 | \$23.48 |
| A | 6515013139633 | KNIFE GENERAL SURGICAL 1.75" BLADE LG SIZE 11 BLADE CRS/PLAS100S | PG | 2 | 2 | 5.00 | 4.00 | \$118.04 | 5.00 | 4.00 | \$118.04 |
| A | 6540014621316 | LENS SET AVIATOR FR EDGED TO FG 58 AVIATOR FRAME | SE | 1 | 1 | 0.45 | 0.02 | \$1,221.51 | 0.45 | 0.02 | \$1,221.51 |
| A | 6540014621322 | LENS SET AVIATOR FR MAG-1 FRAME EDGED TO MAG-1 FRAME | SE | 1 | 1 | 0.45 | 0.02 | \$870.85 | 0.45 | 0.02 | \$870.85 |
| C | 6515007542834 | NEEDLE HYPO 18GAX1.5IN LUER LOCK 100S | PG | 2 | 1 | 1.32 | 0.20 | \$22.54 | 0.66 | 0.10 | \$11.27 |
| A | 6515007542837 | NEEDLE HYPO 26GA .469-.531IN LUER LOCK 100S | PG | 1 | 1 | 0.42 | 0.10 | \$14.86 | 0.42 | 0.10 | \$14.86 |
| A | 6515013369306 | NEEDLE HYPO ANESTHESIA 30GA TRI-BEVELED 0.50IN FINE TIP STER 100S | PG | 1 | 1 | 0.01 | 0.01 | \$53.25 | 0.01 | 0.01 | \$53.25 |

Note. A=quantity unchanged; B=quantity increase; C=quantity decrease; D=delete; E=add, deleted replacement item; F=add, new item

| Status | NSN | Supply description | UI | AS qty | ESP qty | AS wt | AS cube | AS cost | ESP wt | ESP cube | ESP cost |
|--------|---------------|------------------------------------------------------------------|----|--------|---------|-------|---------|------------|--------|----------|------------|
| D | 6515015261730 | NEEDLE HYPODERMIC SAFETY W/SHIELDING MECHANISM 25GAGE X1" NDL50S | PG | 2 | 0 | 11.10 | 7.30 | \$44.00 | 0.00 | 0.00 | 0.00 |
| C | 6510011077575 | PAD EYE COTTON GAUZE 2.5X2IN 50S | PG | 2 | 1 | 0.94 | 2.00 | \$20.86 | 0.47 | 1.00 | \$10.43 |
| D | 6510007863736 | PAD ISOPROPYL ALCOHOL IMPREGNATED WHITE 200S | PG | 4 | 0 | 4.00 | 0.40 | \$11.60 | 0.00 | 0.00 | 0.00 |
| B | 6515013864473 | PROBE ENDOPHOTOCOAGULATION 20 GA STR W/FLEX FIBER OPTIC CABLE 6S | PG | 1 | 4 | 0.01 | 0.01 | \$1,304.10 | 0.04 | 0.04 | \$5,216.40 |
| D | 6515013225898 | RAZOR SURG PREP PLAS 100S | PG | 1 | 0 | 0.20 | 0.10 | \$42.00 | 0.00 | 0.00 | 0.00 |
| C | 6515014491016 | SHIELD EYE SURG FOX ALUM 3X2IN 12S | PG | 3 | 2 | 0.90 | 0.90 | \$87.00 | 0.60 | 0.60 | \$58.00 |
| D | 6508014598510 | SKIN CLEANSER ALCOHOL AEROSAL FOAM WATERLESS 5.4OZ CAN 12/PG | PG | 2 | 0 | 0.70 | 0.22 | \$261.52 | 0.00 | 0.00 | 0.00 |
| C | 6540010602964 | SPECTACLES POST MYDRIATIC DISPOSABLE PLASTIC W/ADJ TEMPLES100S | PG | 2 | 1 | 3.60 | 0.28 | \$49.26 | 1.80 | 0.14 | \$24.63 |
| D | 6510007822698 | SPONGE SURG GAUZ ABS WHITE 4X4IN 8-PLY 200S | PG | 2 | 0 | 4.00 | 2.00 | \$13.12 | 0.00 | 0.00 | 0.00 |
| C | 6510011225564 | SPONGE SURG RAYON NONWVN 4.4IN 600S | BX | 2 | 1 | 13.50 | 2.40 | \$184.94 | 6.75 | 1.20 | \$92.47 |
| D | 6510007219808 | SPONGE SURGICAL CELLULOSE & COTTON & GAUZE 4X4" STERILE 1200S | PG | 1 | 0 | 13.00 | 2.63 | \$81.29 | 0.00 | 0.00 | 0.00 |
| C | 6510011253241 | SPONGE SURGICAL NONWOVEN SYN FIBER WHITE .625 X .313IN 144S | PG | 2 | 1 | 0.30 | 0.18 | \$79.08 | 0.15 | 0.09 | \$39.54 |
| B | 6540014629682 | STORAGE CASE CONTACT LENS RIGID PLASTIC HOLDS ONE PAIR 4/PACKAGE | PG | 2 | 3 | 1.10 | 0.22 | \$52.16 | 1.65 | 0.33 | \$78.24 |
| C | 6540013880560 | STRAP SPECTACLE FRAME SELF-ADJUSTING RBBR BLACK RIGHT&LEFT SIDE | EA | 12 | 1 | 0.12 | 2.16 | \$116.28 | 0.01 | 0.18 | \$9.69 |

Note. A=quantity unchanged; B=quantity increase; C=quantity decrease; D=delete; E=add, deleted replacement item; F=add, new item

| Status | NSN | Supply description | UI | AS qty | ESP qty | AS wt | AS cube | AS cost | ESP wt | ESP cube | ESP cost |
|--------|---------------|------------------------------------------------------------------|----|--------|---------|-------|---------|------------|--------|----------|------------|
| D | 6515012228490 | SUTURE ABS 4-0 18IN SURG NDL P-2 SYNTH 12S | DZ | 2 | 0 | 10.80 | 0.26 | \$621.84 | 0.00 | 0.00 | 0.00 |
| D | 6515013110346 | SUTURE ABS 4-0 18IN SURG SGL ARM GUT 12S | PG | 2 | 0 | 4.80 | 0.36 | \$753.12 | 0.00 | 0.00 | 0.00 |
| B | 6515012228491 | SUTURE ABS 6-0 12IN OPHTH NDL S-29 SYNTH 12S | DZ | 2 | 4 | 0.96 | 0.02 | \$136.62 | 1.92 | 0.04 | \$273.24 |
| B | 6515012594276 | SUTURE ABS 6-0 18IN NDL PC-1 FAST GUT NAT 12S | DZ | 2 | 3 | 0.52 | 0.03 | \$57.40 | 0.78 | 0.05 | \$86.10 |
| B | 6515011272193 | SUTURE NONABS 6-0 18IN SURG SGL ARM MONO 12S | PG | 2 | 4 | 1.00 | 0.20 | \$269.68 | 2.00 | 0.40 | \$539.36 |
| B | 6515012628704 | SUTURE NONABS OPHTH SZ 8-0 12IN NDL TG175-8,TG175-8 12S | DZ | 2 | 3 | 0.46 | 0.04 | \$400.02 | 0.69 | 0.06 | \$600.03 |
| B | 6515013274842 | SUTURE NONABS OPHTH SZ 8-0 12IN NDL TG175-8,TG175-8 12S | PG | 1 | 2 | 0.23 | 0.02 | \$200.01 | 0.46 | 0.04 | \$400.02 |
| D | 6515011621914 | SUTURE NONABS PLAS SURG SZ4-0 18"LG NDL P-3 MERSILENE ORDER BY1S | DZ | 2 | 0 | 0.24 | 0.02 | \$906.48 | 0.00 | 0.00 | 0.00 |
| A | 6515001736338 | SUTURE NONABS SURG NYLON MONOFILAMENT SZ 10-0 DBL ARMED 12S | PG | 6 | 6 | 0.90 | 0.54 | \$2,497.62 | 0.90 | 0.54 | \$2,497.62 |
| B | 6515011264014 | SUTURE NONABS SURG NYLON MONOFILAMENT SZ 9-0 DBL ARMED | PG | 2 | 3 | 0.02 | 0.02 | \$400.02 | 0.03 | 0.03 | \$600.03 |
| C | 6515009824205 | SYRINGE & NEEDLE TUBERCULIN 1ML 25GA 100S | PG | 2 | 1 | 3.08 | 2.00 | \$29.40 | 1.54 | 1.00 | \$14.70 |
| D | 6510009268882 | TAPE ADHESIVE SURG POROUS WOVEN 1INX10YD 12S | PG | 2 | 0 | 2.08 | 0.08 | \$35.14 | 0.00 | 0.00 | 0.00 |
| D | 6510009268883 | TAPE ADHESIVE SURG WOVEN 2INX10YD 6S | PG | 1 | 0 | 1.07 | 1.00 | \$14.24 | 0.00 | 0.00 | 0.00 |
| A | 6515013896158 | TUBE SUCT SURG POOLE OPEN END TIP 72IN PLAS CLR TUBING 50S | PG | 1 | 1 | 13.14 | 1.70 | \$161.72 | 13.14 | 1.70 | \$161.72 |

Note. A=quantity unchanged; B=quantity increase; C=quantity decrease; D=delete; E=add, deleted replacement item; F=add, new item

| Status | NSN | Supply description | UI | AS qty | ESP qty | AS wt | AS cube | AS cost | ESP wt | ESP cube | ESP cost |
|--------|---------------|---------------------------------------------------------------------|----|--------|---------|-------|---------|------------|--------|----------|----------|
| A | 6515013605749 | WIPES INSTRUMENT 4X4INSINGLE USE STER 50S | PG | 2 | 2 | 0.40 | 0.02 | \$299.34 | 0.40 | 0.02 | \$299.34 |
| A | 6515014609686 | BULB OPHTHALMOSCOPE F/USE W/SIGMA 150 INDIRECT OPHTHALMOSCOPE | EA | 1 | 1 | 0.45 | 0.10 | \$85.49 | 0.45 | 0.10 | \$85.49 |
| D | 7520013323967 | PEN BALL POINT FINE POINT COLOR BLUE RETRACTABLE | PG | 1 | 0 | 0.20 | 0.10 | \$6.47 | 0.00 | 0.00 | 0.00 |
| D | 6515011536495 | PEN SKIN MARKING SURG PLAS DISP 10S | PG | 1 | 0 | 1.50 | 0.20 | \$46.80 | 0.00 | 0.00 | 0.00 |
| C | 6510014999364 | TOWEL PACK SURG STER 17X27IN CTN BLUE 72S | PG | 4 | 2 | 4.00 | 4.00 | \$1,112.40 | 2.00 | 2.00 | \$556.20 |

Note. A=quantity unchanged; B=quantity increase; C=quantity decrease; D=delete; E=add, deleted replacement item; F=add, new item

Appendix B.
FFEYE Aggregated Line Items from the 938 EMEDS AS

| NSN | Supply description | UI | 938 AS | Total qty used (UI) | Total wt | Total cube | Total cost |
|-------------------|-----------------------------------------------|----|--------|---------------------|----------|------------|------------|
| Equipment | | | | | | | |
| 6530015142869 | TRAY STER F/HANDPIEC F/POWERPRO BAT HANDPIECE | EA | 938AQ | 1 | 0.55 | 0.12 | \$1,287.00 |
| 6520015547783 | TRAY STERILIZATION LARGE W/STATIM STERILIZER | EA | 938AU | 1 | 1.00 | 0.60 | \$166.56 |
| 6515011417469 | HANDLE SURG KNIFE DETACHABLE BLADE SZ 3 | EA | 938BQ | 1 | 0.13 | 0.52 | \$13.04 |
| 6530007778600 | CUP SOL CORROSION-RESISTING STEEL 7 OZ | EA | 938BQ | 1 | 0.22 | 0.01 | \$5.86 |
| 6530015311740 | TRAY STER W/LID FOR SOAKING INST | EA | 938BR | 1 | 2.00 | 0.76 | \$398.30 |
| 6530014866556 | TRAY STER 2.75IN 13.125IN 22.125IN STEAM | EA | 938BR | 1 | 23.00 | 0.50 | \$1,542.00 |
| 6530012594318 | COVER SURGICAL INSTRUMENT STAND POLYESTER 30I | PG | 938BR | 1 | 12.50 | 2.01 | \$74.48 |
| 6530014866573 | TRAY STER 3.675IN 13.125INDP 22.125INHT | EA | 938BR | 1 | 16.50 | 0.50 | \$1,642.50 |
| 6532002999628 | TROUSERS OPERATING SURG LG GRN/GRAY | EA | 938BR | 16 | 11.20 | 0.59 | \$212.48 |
| 6532002999630 | TROUSERS OPERATING SURG MED GRN/GRAY | EA | 938BR | 16 | 10.40 | 0.59 | \$212.48 |
| Medicinals | | | | | | | |
| 6505005986117 | LIDOCAINE HCL INJ 2% 20MG/ML 20ML | BT | 938AE | 10 | 5.00 | 6.94 | \$92.30 |
| 6505010696519 | TIMOLOL MALEATE OPHTHALMIC SOLUTION 5ML | BT | 938AE | 5 | 0.50 | 0.50 | \$7.05 |
| 6505012870626 | SOD CHLOR INJ 0.9% 10ML VI 25S | PG | 938AE | 1 | 0.25 | 0.00 | \$6.77 |

| NSN | Supply description | UI | 938 AS | Total qty used (UI) | Total wt | Total cube | Total cost |
|--------------------|-----------------------------------------------|----|--------|---------------------|----------|------------|------------|
| 6505005824737 | TETRACAINE HYDROCH OPHTH SOLUTION 0.5% 15 ML | BT | 938BE | 2 | 0.40 | 0.29 | \$3.70 |
| 6505009857301 | ACETAMINOPHEN TAB 0.325GM 1000S | BT | 938BE | 1 | 0.92 | 0.10 | \$7.30 |
| 6505015090677 | MOXIFLOX OPHTHAHLORIDE 5MG/ML 0.5% 3ML | BT | 938BE | 4 | 0.40 | 0.40 | \$508.04 |
| 6505012149062 | IBUPROFEN TAB 800 MG 500S | BT | 938BE | 1 | 1.43 | 0.10 | \$124.26 |
| 6505001507622 | LUBRICANT OPHTHALMIC TOPICAL 1/8OZ | TU | 938BE | 10 | 1.00 | 1.00 | \$108.30 |
| 6505015032390 | FLUORESCEIN SODIUM OPHTHALMIC STRIPS 1MG 100S | PG | 938BE | 2 | 0.20 | 0.20 | \$20.28 |
| 6505005986116 | LIDOCAINE HYDROCH INJ 1.0%/ML 50ML | BT | 938BE | 4 | 1.00 | 0.40 | \$76.88 |
| 6505009617486 | ARTIFICIAL TEARS 15 ML | BT | 938BE | 24 | 2.40 | 2.40 | \$38.64 |
| 6505014821064 | KETOROLAC TROMETHAMINE INJ 30MG/ML 1ML 10S | PG | 938BE | 4 | 1.60 | 0.40 | \$228.24 |
| 6505012139514 | GENTAMICIN SULFATE INJ 40MG 2ML VI 25S | PG | 938BE | 2 | 0.97 | 0.20 | \$57.36 |
| 6505013366179 | CIPROFLOXACIN HCL & DEX 200ML BAG 24S | PG | 938BE | 2 | 7.00 | 2.16 | \$357.78 |
| 6505015054693 | MEPERIDINE HYDROCH INJ 100MG/ML 1ML 10S | PG | 938BE | 4 | 2.20 | 0.60 | \$32.40 |
| 6505015055813 | MORPHINE SULFATE INJ 10MG/ML 1ML 10S | PG | 938BE | 4 | 4.00 | 0.60 | \$41.16 |
| 6505014802501 | CEFAZOLIN SODIUM 1GM 10ML VI 25S | PG | 938BE | 2 | 2.00 | 0.60 | \$87.28 |
| 6505013308924 | SOD CHLOR INJ 0.9% 100ML BAG 64S | PG | 938BE | 1 | 13.00 | 2.00 | \$85.44 |
| Consumables | | | | | | | |
| 6515013770436 | NEEDLE HYPO 25GAX1.5IN REG BEV 100S | PG | 938AP | 1 | 1.00 | 0.20 | \$59.41 |

| NSN | Supply description | UI | 938 AS | Total qty used (UI) | Total wt | Total cube | Total cost |
|---------------|-----------------------------------------------|----|--------|---------------------|----------|------------|------------|
| 6515014975043 | SUTURE ABS SURG MONO 4-0 18MM NAT STER 12S | PG | 938AQ | 3 | 3.00 | 4.34 | \$347.28 |
| 6530015307918 | BRUSH SCRUB SURGICAL POVIDONE IODINE 30S | PG | 938AR | 2 | 5.12 | 1.51 | \$52.00 |
| 6515014915719 | GLOVE PATIENT EXAM PURPLE SZ 10 LARGE 100S | PG | 938BK | 2 | 0.58 | 0.54 | \$34.00 |
| 6515014618933 | GLOVE PATIENT EXAM 9.5IN N-DEX NITR MED 100S | PG | 938BK | 2 | 2.66 | 0.34 | \$34.46 |
| 6515014618939 | GLOVE PATIENT EXAM SM N-DEX NIRTILE RBBR 100S | PG | 938BK | 2 | 2.00 | 0.20 | \$18.76 |
| 6510007822698 | SPONGE SURG GAUZ ABS WHITE 4X4IN 8-PLY 200S | PG | 938BK | 4 | 8.00 | 4.00 | \$26.24 |
| 6510009268882 | TAPE ADHESIVE SURG POROUS WOVEN 1INX10YD 12S | PG | 938BK | 1 | 1.04 | 0.04 | \$17.57 |
| 6510009268883 | TAPE ADHESIVE SURG WOVEN 2INX10YD 6S | PG | 938BK | 1 | 1.07 | 1.00 | \$14.24 |
| 6515004627348 | SYRINGE HYPODERMIC 3ML LUER LOCK 100S | PG | 938BK | 1 | 1.13 | 0.17 | \$12.45 |
| 6515007540412 | SYRINGE HYPO 10ML CAP LUER SLIP W/O NDL 100S | PG | 938BK | 1 | 0.70 | 0.34 | \$16.43 |
| 6510007863736 | PAD ISOPROPYL ALCOHOL IMPREGNATED WHITE 200S | PG | 938BK | 1 | 1.00 | 0.10 | \$2.90 |
| 6515015261729 | NEEDLE HYPODERMIC SAFETY 18GA X 1.500 50S | PG | 938BK | 1 | 0.25 | 0.02 | \$22.00 |
| 6510014970960 | APPLICATOR POVIDONE-IODINE IMPREGNATED | EA | 938BK | 10 | 5.50 | 1.20 | \$56.70 |

| NSN | Supply description | UI | 938 AS | Total qty used (UI) | Total wt | Total cube | Total cost |
|---------------|-----------------------------------------------|----|--------|---------------------|---------------|--------------|-------------------|
| 7520009357136 | PEN BALL-POINT BLACK MED POINT RETRACT 12S | DZ | 938BK | 1 | 0.36 | 0.14 | \$4.81 |
| 8105011839764 | BAG PLASTIC FLAT 58X36IN HEAVYDUTY 100S | PG | 938BM | 2 | 2.00 | 0.64 | \$79.98 |
| 6515013225898 | RAZOR SURG PREP PLAS 100S | PG | 938BQ | 1 | 0.20 | 0.10 | \$42.00 |
| 6515011536495 | PEN SKIN MARKING SURG PLAS DISP 10S | PG | 938BQ | 6 | 9.00 | 1.19 | \$280.80 |
| 6515015196343 | GLOVE SURG LATEX PWDRFREE SZ 7 STER 50S | PG | 938BR | 1 | 5.00 | 0.13 | \$142.49 |
| 6515015196347 | GLOVE SURGEON LATEX & POWDER FREE 8 STER 50S | PG | 938BR | 1 | 5.00 | 0.13 | \$142.49 |
| 6515015196348 | GLOVE SURG LATEX PWDRFREE SZ 7.5 GAUNT 50S | PG | 938BR | 1 | 5.00 | 0.13 | \$142.49 |
| 6532004056009 | SURGICAL PACK GOWN & TOWEL LG 28S | PG | 938BR | 3 | 51.00 | 6.39 | \$358.62 |
| 6532009143071 | SHIRT OPER SURG MENS XL PULLOVER GRN/GRAY | EA | 938BR | 32 | 18.24 | 1.18 | \$202.88 |
| 6532009143598 | SHIRT OPER SURG MENS/ LARGE | EA | 938BR | 32 | 17.28 | 1.18 | \$185.92 |
| 6515015311885 | SUTURE ABS SURG DEXON/VICRYL/POLY 4-0 3DZ/36S | PG | 938BU | 2 | 10.00 | 3.11 | \$251.86 |
| | | | | Totals | 277.89 | 53.41 | \$9,986.66 |

REPORT DOCUMENTATION PAGE

The public reporting burden for this collection of information is estimated to average 1 hour per response, including the time for reviewing instructions, searching existing data sources, gathering and maintaining the data needed, and completing and reviewing the collection of information. Send comments regarding this burden estimate or any other aspect of this collection of information, including suggestions for reducing the burden, to Washington Headquarters Services, Directorate for Information Operations and Reports, 1215 Jefferson Davis Highway, Suite 1204, Arlington, VA 22202-4302, Respondents should be aware that notwithstanding any other provision of law, no person shall be subject to any penalty for failing to comply with a collection of information if it does not display a currently valid OMB Control number. **PLEASE DO NOT RETURN YOUR FORM TO THE ABOVE ADDRESS.**

| | | |
|----------------------------------------------|---------------------------------------------|----------------------------------------------------------|
| 1. REPORT DATE (DD MM YY) 14 10 10 | 2. REPORT TYPE Technical Document | 3. DATES COVERED (from – to) Dec 2009–Sep 2010 |
|----------------------------------------------|---------------------------------------------|----------------------------------------------------------|

| | |
|---------------------------------------------------------------------------------------------------------------------------------------------------------------------------------------------------------------------------|-----------------------------------------------------------------------------------------------------------------------------------------------------------------------------------------------------------------------|
| 4. TITLE: Air Force Operational Medicine: Using the Enterprise Estimating Supplies Program to Develop Materiel Solutions for the Operational Requirements of the Air Force Ophthalmology Augmentation Team (FFEYE) | 5a. Contract Number: GS-09K-99BHD 5b. Grant Number: 5c. Program Element Number: 5d. Project Number: 5e. Task Number: 9T7SDGIS006 5f. Work Unit Number: 60334 |
|---------------------------------------------------------------------------------------------------------------------------------------------------------------------------------------------------------------------------|-----------------------------------------------------------------------------------------------------------------------------------------------------------------------------------------------------------------------|

| | |
|---------------------------------------------------------------------------------------------------|--|
| 6. AUTHORS Hopkins, Curt C.; Nix, Ralph E.; Wing, Vern; Brown, Carrie; Jackson, Charles | |
|---------------------------------------------------------------------------------------------------|--|

| | |
|-----------------------------------------------------------------------------------------------------------------------------------------------------------------|----------------------------------------------------------------------------|
| 7. PERFORMING ORGANIZATION NAME(S) AND ADDRESS(ES) Commanding Officer Naval Health Research Center 140 Sylvester Rd San Diego, CA 92106-3521 | 8. PERFORMING ORGANIZATION REPORT NUMBER Tech Doc No. 10-150 |
|-----------------------------------------------------------------------------------------------------------------------------------------------------------------|----------------------------------------------------------------------------|

| | | | |
|---------------------------------------------------------------------------------------------------------------------------------------------------------------------------------------------------------------------------------------------------------------------------------------------------------------------------------------------------------------------------------------------------------|-------------------------------------------------------------------------------------------------------------|-------------------------------------------------------------------------------------------|------------------------------------------------------|
| 8. SPONSORING/MONITORING AGENCY NAMES(S) AND ADDRESS(ES) <table style="width: 100%; border: none;"> <tr> <td style="width: 50%;">Commanding Officer Naval Medical Research Center 503 Robert Grant Ave Silver Spring, MD 20910-7500</td> <td style="width: 50%;">Commander Navy Medicine Support Command P.O. Box 140 Jacksonville, FL 32212-0140</td> </tr> </table> | Commanding Officer Naval Medical Research Center 503 Robert Grant Ave Silver Spring, MD 20910-7500 | Commander Navy Medicine Support Command P.O. Box 140 Jacksonville, FL 32212-0140 | 10. SPONSOR/MONITOR'S ACRONYM(S) NMRC/NMSC |
| Commanding Officer Naval Medical Research Center 503 Robert Grant Ave Silver Spring, MD 20910-7500 | Commander Navy Medicine Support Command P.O. Box 140 Jacksonville, FL 32212-0140 | | |
| | 11. SPONSOR/MONITOR'S REPORT NUMBER(S) | | |

| |
|-----------------------------------------------------------------------------------------------------------|
| 12. DISTRIBUTION/AVAILABILITY STATEMENT Approved for public release; distribution is unlimited. |
|-----------------------------------------------------------------------------------------------------------|

| |
|--------------------------------|
| 13. SUPPLEMENTARY NOTES |
|--------------------------------|

| |
|-------------------------------------------------------------------------------------------------------------------------------------------------------------------------------------------------------------------------------------------------------------------------------------------------------------------------------------------------------------------------------------------------------------------------------------------------------------------------------------------------------------------------------------------------------------------------------------------------------------------------------------------------------------------------------------------------------------------------------------------------------------------------------------------------------------------------------------------------------------------------------------------------------------------------------------------------------------------------------------------------------|
| 14. ABSTRACT <p>The Naval Health Research Center (NHRC) has used its modeling and simulation expertise to develop and update conventional U.S. Air Force medical assets since 2004. The objective of this study was to leverage medical modeling and simulation advantages to provide recommendations for allowance standard configurations based on the Air Force Ophthalmology Augmentation Team (FFEYE) operational and clinical requirements.</p> <p>NHRC analysts reviewed the FFEYE, analyzed clinical requirements with subject matter experts, and used modeling and simulation tools to develop the operationally-based and patient-driven recommended 917F line list. The Unit Type Code capabilities, operational requirements, and materiel solutions were identified, and issues of modernization, clinical requirement, standardization, and redundancy were addressed. Total changes resulted in a reduction in weight by 16%, cube by 20%, and cost by 3%, or \$10,875.</p> |
|-------------------------------------------------------------------------------------------------------------------------------------------------------------------------------------------------------------------------------------------------------------------------------------------------------------------------------------------------------------------------------------------------------------------------------------------------------------------------------------------------------------------------------------------------------------------------------------------------------------------------------------------------------------------------------------------------------------------------------------------------------------------------------------------------------------------------------------------------------------------------------------------------------------------------------------------------------------------------------------------------------|

| |
|--------------------------------------------------------------------------------------------|
| 15. SUBJECT TERMS EMedKW, modeling and simulation, U.S. Air Force, ophthalmology |
|--------------------------------------------------------------------------------------------|

| | | | | | |
|----------------------------------------|----------------------------|-----------------------------|-------------------------------------------|----------------------------------|--------------------------------------------------------------------------------|
| 16. SECURITY CLASSIFICATION OF: | | | 17. LIMITATION OF ABSTRACT UNCL | 18. NUMBER OF PAGES 37 | 18a. NAME OF RESPONSIBLE PERSON Commanding Officer |
| a. REPORT UNCL | b. ABSTRACT UNCL | c. THIS PAGE UNCL | | | 18b. TELEPHONE NUMBER (INCLUDING AREA CODE) COMM/DSN: (619) 553-8429 |