

High-Resolution Seismic Surveying for Neogene-Quaternary Sequence Stratigraphy, Northern California Continental Shelf and Upper Slope, in Support of STRATAFORM

Craig S. Fulthorpe
University of Texas
Institute for Geophysics
4412 Spicewood Springs Road, Bldg. 600
Austin, TX 78759-8500
phone: (512) 471-0459 fax: (512) 471-8844 e-mail: craig@utigig.utexas.edu

James A. Austin, Jr.
phone: (512) 471-0450 fax: (512) 471-8844 e-mail: jamie@utigig.utexas.edu

Award #: N00014-96-1-0359
(AASERT Award #: N00014-97-1-0555)
<http://www.ig.utexas.edu/>

LONG-TERM GOAL

This project is a component of ONR's STRATAFORM program, the goal of which is to link short-term (i.e., acting over hours to weeks) biological and physical processes affecting sedimentation ("event stratigraphy") to the sequence stratigraphy and facies architecture of the preserved record. STRATAFORM consists of three interrelated projects whose goals are to study: 1) shelf sediment dynamics and the development of lithostratigraphy, 2) slope geological processes and resultant geomorphology, and 3) stratigraphic sequences resulting from shelf and slope sedimentation. High-resolution multichannel seismic (MCS) data collection, described below, is part of the third project, but the data also form part of a multi-faceted approach that ties all three projects together.

OBJECTIVES

Specific objectives include: 1) origins of sequence stratigraphic architecture in an environment characterized by high rates of sediment supply, 2) tracking the history of northward sediment dispersal from the Eel River and identifying sediment transport pathways that existed during sea-level lowstands, 3) morphologies and evolution of slope canyons, and 4) history of the Humboldt Slide.

APPROACH

STRATAFORM participants are documenting the stratigraphy of the continental shelf and slope of the Eel River Basin, northern California margin, at a variety of spatial scales (lateral and vertical) and in three dimensions (3-D). The key to this entire effort is the collection of "nested" geophysical and geological data, through use of a variety of tools whose individual temporal and spatial scales overlap to form a wide-ranging continuum of measurements.

Report Documentation Page			Form Approved OMB No. 0704-0188		
Public reporting burden for the collection of information is estimated to average 1 hour per response, including the time for reviewing instructions, searching existing data sources, gathering and maintaining the data needed, and completing and reviewing the collection of information. Send comments regarding this burden estimate or any other aspect of this collection of information, including suggestions for reducing this burden, to Washington Headquarters Services, Directorate for Information Operations and Reports, 1215 Jefferson Davis Highway, Suite 1204, Arlington VA 22202-4302. Respondents should be aware that notwithstanding any other provision of law, no person shall be subject to a penalty for failing to comply with a collection of information if it does not display a currently valid OMB control number.					
1. REPORT DATE 1998		2. REPORT TYPE		3. DATES COVERED 00-00-1998 to 00-00-1998	
4. TITLE AND SUBTITLE High-Resolution Seismic Surveying for Neogene-Quaternary Sequence Straigraphy, Northern California Continental Shelf and Upper Slope, in Support of STRATAFORM				5a. CONTRACT NUMBER	
				5b. GRANT NUMBER	
				5c. PROGRAM ELEMENT NUMBER	
6. AUTHOR(S)				5d. PROJECT NUMBER	
				5e. TASK NUMBER	
				5f. WORK UNIT NUMBER	
7. PERFORMING ORGANIZATION NAME(S) AND ADDRESS(ES) University of Texas, Institute for Geophysics, 4412 Spicewood Springs Road Bldg. 600, Austin, TX, 78759-8500				8. PERFORMING ORGANIZATION REPORT NUMBER	
9. SPONSORING/MONITORING AGENCY NAME(S) AND ADDRESS(ES)				10. SPONSOR/MONITOR'S ACRONYM(S)	
				11. SPONSOR/MONITOR'S REPORT NUMBER(S)	
12. DISTRIBUTION/AVAILABILITY STATEMENT Approved for public release; distribution unlimited					
13. SUPPLEMENTARY NOTES See also ADM002252.					
14. ABSTRACT					
15. SUBJECT TERMS					
16. SECURITY CLASSIFICATION OF:			17. LIMITATION OF ABSTRACT Same as Report (SAR)	18. NUMBER OF PAGES 5	19a. NAME OF RESPONSIBLE PERSON
a. REPORT unclassified	b. ABSTRACT unclassified	c. THIS PAGE unclassified			

WORK COMPLETED

High-resolution 2-D MCS profiles were collected from the outer shelf to slope, offshore Eel River Basin jointly by the University of Texas Institute for Geophysics (UTIG) and Lamont-Doherty Earth Observatory (L-DEO) in July - August 1996. The seismic system, developed and owned by L-DEO, included a 48-channel I.T.I. streamer, 45/45 cu. in. G.I. air gun and OYO DAS-1 recording system. A backup Geco streamer was used for part of the survey. The survey was designed to image stratal geometries at a scale intermediate between those of the existing very-high-resolution (500-3500 Hz) Huntect deep-towed seismic profiles and commercial MCS data, fulfilling the STRATAFORM goal of providing "nested" seismic coverage (several Huntect and commercial lines were duplicated). The seismic grid surveyed consists of 84 lines (~2200 km; Figure 1). Line spacings vary, but a spacing of 800 m was maintained, where possible, in both dip and strike directions. Such dense coverage was necessary to provide the 3-D stratigraphic perspective mandated by STRATAFORM. Vertical resolution is ~5m. Data processing is being shared by UTIG and L-DEO (L-DEO P.I.: G.S. Mountain). UTIG has now processed all but one of its 41 lines to the stage of post-stack migration. Interpretation to date is limited to general observations, but detailed interpretations are scheduled to begin in FY99.

RESULTS

During sea-level lowstands, part of the shelf was exposed, as indicated by a pair of large, buried channels, up to ~120 m deep and 1 km wide, occurring near the landward end of line 25 (Figures 1 and 2). These features were probably not related to Eel River drainage: their NE-SW course suggests a more northerly source.

Slope channels are of at least two distinctive types. 1) Shallowly buried (~40 m) aggrading gullies, ~20 m deep, are spaced at 300 - 600 m intervals. Cycles of erosion alternate with periods of draping during which gully morphology is retained (Field et al., 1996). Sequence stratigraphic interpretation may confirm whether the erosional episodes occur during periods of low sea-level. 2) Northward of the aggrading gullies are larger buried channels, or canyons up to ~120 m deep and 1 km wide. These channels are erosional and exhibit lateral migration and erosion of fill by subsequent channeling.

The new MCS data support the hypothesis that strike-parallel ridges within the Humboldt Slide zone are structural features related to slope failure rather than bedforms (Gardner et al., 1996). The data reveal what may be earlier, buried failure surfaces, with high-amplitude seismic reflections, possibly indicative of trapped gas-charged fluids, immediately landward of the buried headwall scarps.

IMPACT/APPLICATION

The MCS data: 1) fill the gap in seismic resolution and depth of penetration between existing data sets to provide fully "nested" coverage, 2) link outer shelf and upper slope stratigraphic regimes, and 3) allow development of models that will determine the transfer functions between modern sedimentary processes and stratigraphic preservation.

TRANSITIONS

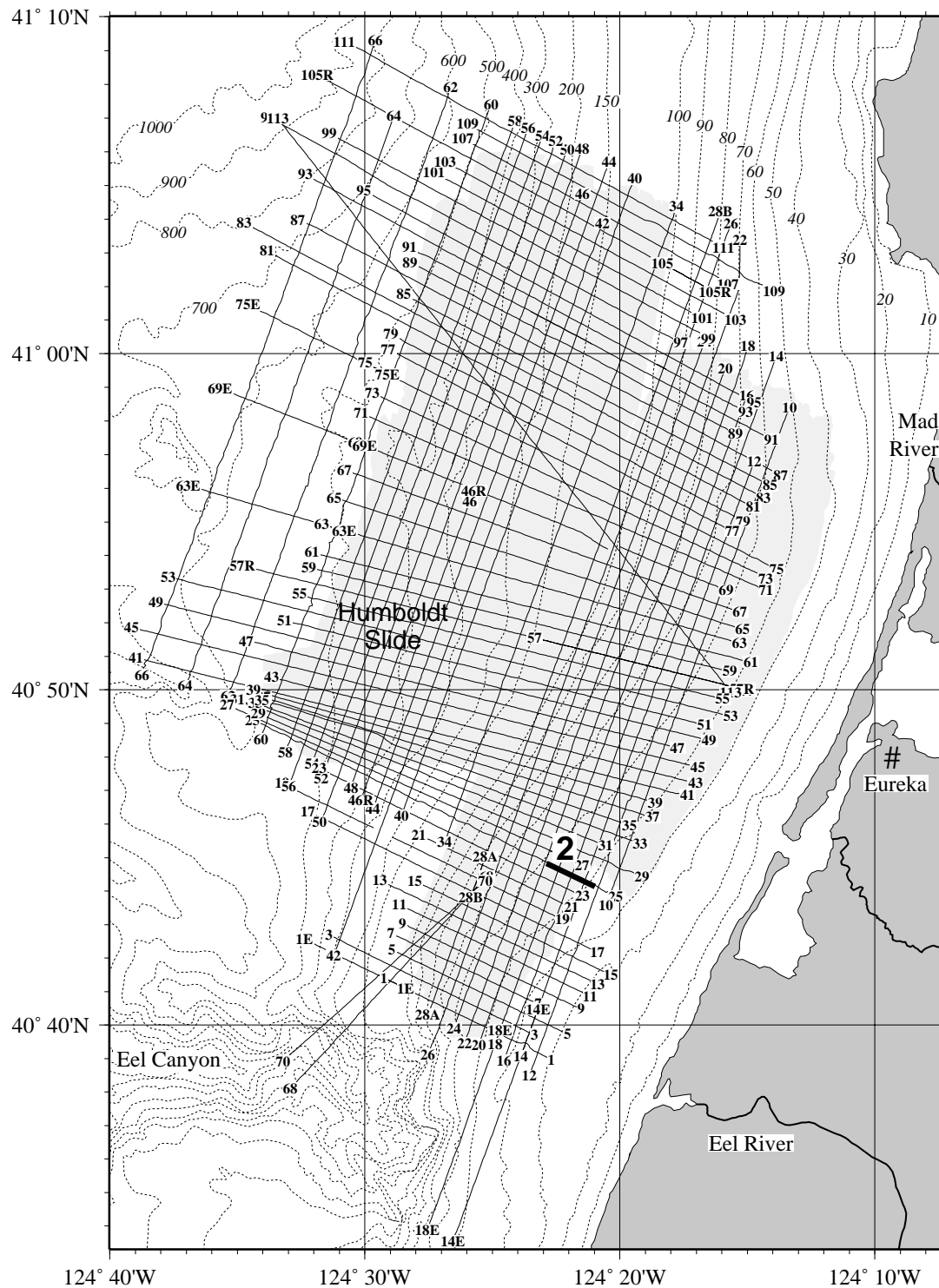
Mobil has shown interest in processing some lines in order to assist with multiple removal.

RELATED PROJECTS

The MCS data are being used to select sites for long (up to 200 m) cores (STRATAFORM Deep Coring Workshop, October 1998). These cores will provide ground truth for nested MCS and Hunttec (deep-towed boomer) profiles.

REFERENCES

- Field, M.E., Gardner, J.V., Prior, D.B., 1996, Cyclic channel development and aggradation of slope sequences: observations from the northern California STRATAFORM site, *Eos, Transactions, American Geophysical Union*, supplement to v. 77, No. 46, p. F317.
- Fulthorpe, C.S., Mountain, G.S., Austin, J.A., Jr., Buhl, P., Diebold, J., Goff, J.A., Schuur, C.L. and Yun, J., 1996, STRATAFORM high-resolution MCS survey, Eel River Basin, northern California margin: shelf/slope stratigraphy and processes, (abstract), *Eos, Transactions, American Geophysical Union*, supplement to v. 77, No. 46, p. F330.
- Gardner, J.V., Lee, H., and Prior, D.B., 1996, Are the Humboldt Slide blocks slide blocks or antidunes?, *Eos, Transactions, American Geophysical Union*, supplement to v. 77, No. 46, p. F330.



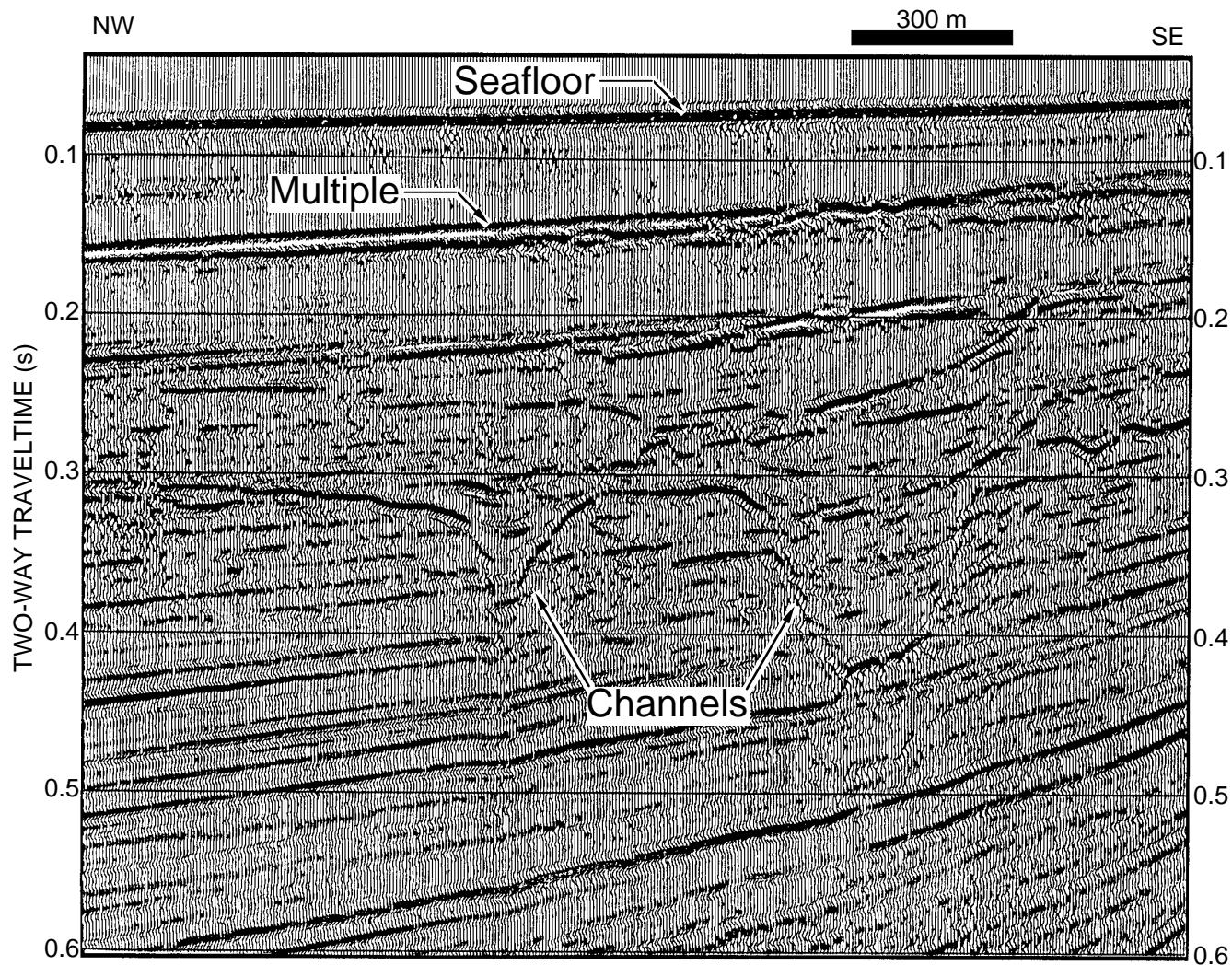


Figure 2. High-resolution multichannel seismic profile (line 25) from the Eel River Basin showing buried channels beneath the shelf. Such channels are products of fluvial incision during sea-level lowstands; mapping suggests that they represent a fluvial system north of the present-day Eel River. The strong reflection at ~0.15 s is the first seafloor multiple. Location of this profile is shown in Figure 1.