

Producing Durable Continuously Reinforced Concrete Pavement using Glass-ceramic Coated Reinforcing Steel

Principal Investigator:	Sean W. Morefield	CERL
Co-Investigators:	Brett A. Williams	GSL
	Charles A. Weiss, Jr.	GSL
	Philip G. Malone	GSL
	Mike Koenigstein	PPEC



Report Documentation Page

*Form Approved
OMB No. 0704-0188*

Public reporting burden for the collection of information is estimated to average 1 hour per response, including the time for reviewing instructions, searching existing data sources, gathering and maintaining the data needed, and completing and reviewing the collection of information. Send comments regarding this burden estimate or any other aspect of this collection of information, including suggestions for reducing this burden, to Washington Headquarters Services, Directorate for Information Operations and Reports, 1215 Jefferson Davis Highway, Suite 1204, Arlington VA 22202-4302. Respondents should be aware that notwithstanding any other provision of law, no person shall be subject to a penalty for failing to comply with a collection of information if it does not display a currently valid OMB control number.

1. REPORT DATE FEB 2010		2. REPORT TYPE		3. DATES COVERED 00-00-2010 to 00-00-2010	
4. TITLE AND SUBTITLE Producing Durable Continuously Reinforced Concrete Pavement using Glass-ceramic Coated Reinforcing Steel				5a. CONTRACT NUMBER	
				5b. GRANT NUMBER	
				5c. PROGRAM ELEMENT NUMBER	
6. AUTHOR(S)				5d. PROJECT NUMBER	
				5e. TASK NUMBER	
				5f. WORK UNIT NUMBER	
7. PERFORMING ORGANIZATION NAME(S) AND ADDRESS(ES) U.S. Army Corps of Engineers, CERL, PO Box 9005, Champaign, IL, 61822				8. PERFORMING ORGANIZATION REPORT NUMBER	
9. SPONSORING/MONITORING AGENCY NAME(S) AND ADDRESS(ES)				10. SPONSOR/MONITOR'S ACRONYM(S)	
				11. SPONSOR/MONITOR'S REPORT NUMBER(S)	
12. DISTRIBUTION/AVAILABILITY STATEMENT Approved for public release; distribution unlimited					
13. SUPPLEMENTARY NOTES 2010 U.S. Army Corrosion Summit, Huntsville, AL, 9-11 Feb.					
14. ABSTRACT					
15. SUBJECT TERMS					
16. SECURITY CLASSIFICATION OF:			17. LIMITATION OF ABSTRACT	18. NUMBER OF PAGES	19a. NAME OF RESPONSIBLE PERSON
a. REPORT unclassified	b. ABSTRACT unclassified	c. THIS PAGE unclassified			

Presentation

- The Corrosion Problem in Pavements
- Nature of the Vitreous-Ceramic Coating
- Ease of Application to Reinforcement Steel
- Bond Strength and Corrosion-Resistance
- Field Demonstration Program
- Testing in Reinforced Concrete Pavement
- Summary of Current Status



Corroding Steel Reinforcement is a Major Problem in Continuously Reinforced Concrete Pavement



The 600% volume change in the iron to iron oxide formation put the concrete in tension and it cracks and spalls

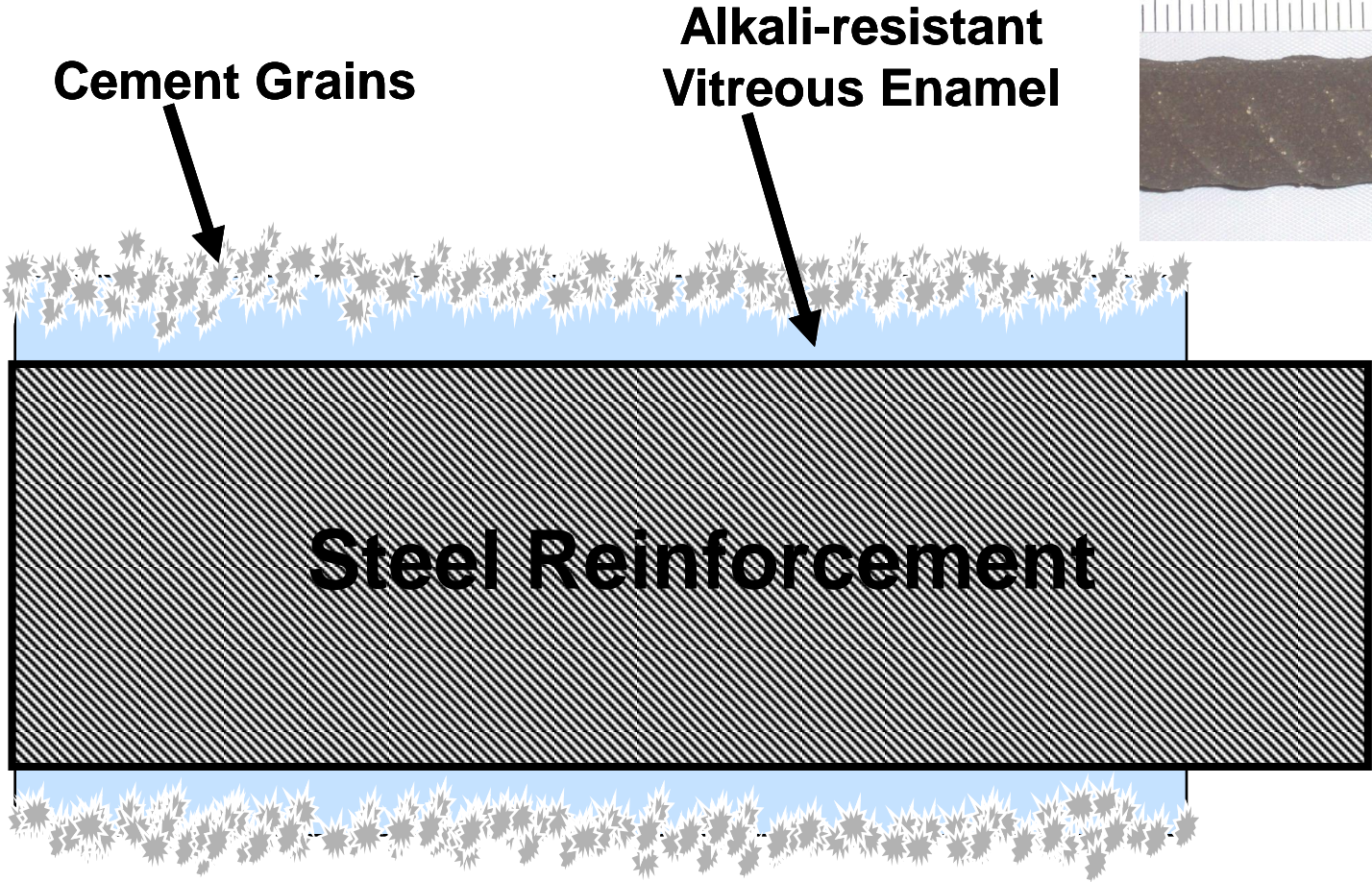


Framing the Problem

- The predicted service life of continuously reinforced concrete pavement can be shortened if the rebar in the pavement corrodes prematurely and delaminates the pavement
- Moisture and chlorides can move through the natural porosity of concrete and the cracks in the pavement
- Application of chlorides from natural sources and from deicing compounds can greatly speed up the corrosion process
- The concrete in the transition zone at the surface of the reinforcement steel is often the most permeable part of the concrete



Schematic of Ceramic-Vitreous Enamel Coating



Enamel protects and steel from corrosion; the cement grains hydrate and bond to surrounding concrete

Properties of Coating

- Covers the reinforcement with an insulator
- Does not delaminate from the steel
- Does not allow the permeable layer at the interfacial zone to form
- Maintains the alkalinity at the surface of the steel reinforcement if the enamel is broken
- Embedded cement grains hydrate if enamel is cracked to self-heal with the formation of calcium silicate hydrate



Goal is to prevent spalling!



Vitreous-Ceramic Coatings

- Formed by fusing glass to steel at temperatures between 750 °C and 850 °C forming a true interlayer of iron-rich glass on the surface of steel.
- Considered to be the most durable coating that can be put on steel.
- Vitreous enameling is used primarily to prevent corrosion of underlying steel.
- Addition of ceramic to the glass provides a reactive component that can form a bond to hydrating Portland cement in fresh concrete.
- New bonding enamel can both strengthen the bond of the steel surface to surrounding concrete and prevent corrosion of the steel reinforcement.



Vitreous Enamel is Glass Fused to a Metal Substrate



Cobalt and nickel-rich glasses will fuse tightly to steel forming an iron-rich interface.



Composition of the glass can be altered to change chemical resistance, bonding properties, coefficient of expansion



Specialized Frits Used to Developed Needed Properties

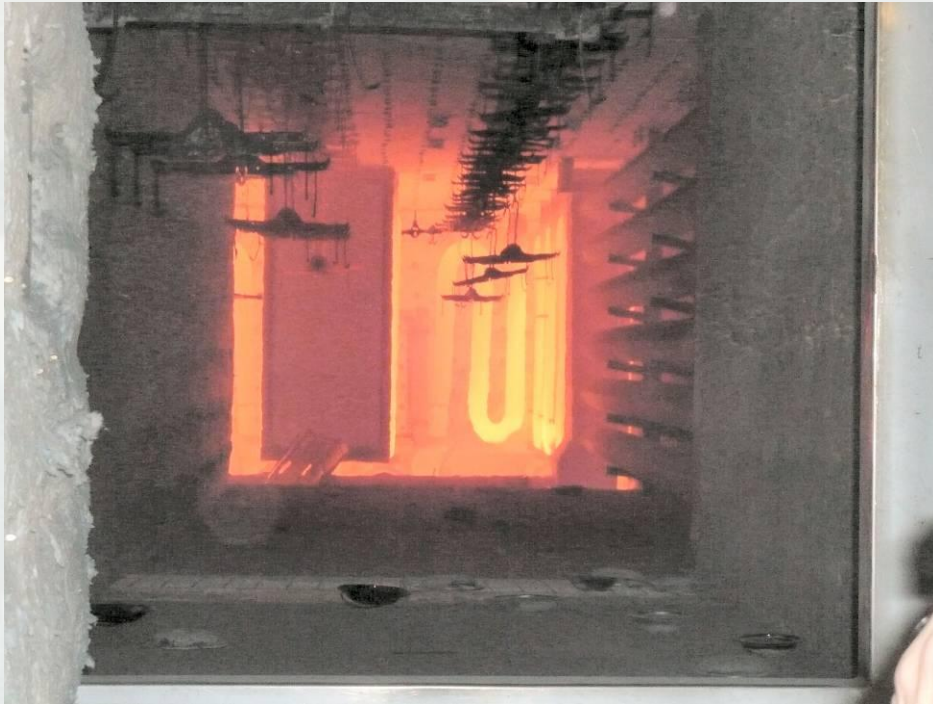


Steel-to-concrete bonding frit contains zirconium to make it alkali-resistant and a reactive Ca-silicate ceramic to make it bond.

The slip must flow, stick and the final glass must have proper thermal expansion properties to form a durable, strong, continuous coating.



Firing of a Vitreous Enamel is a Versatile Process



Firing is typically done in minutes at the 750 C to 850° C range.

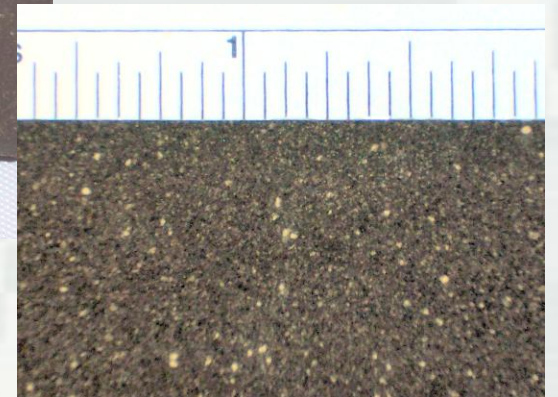
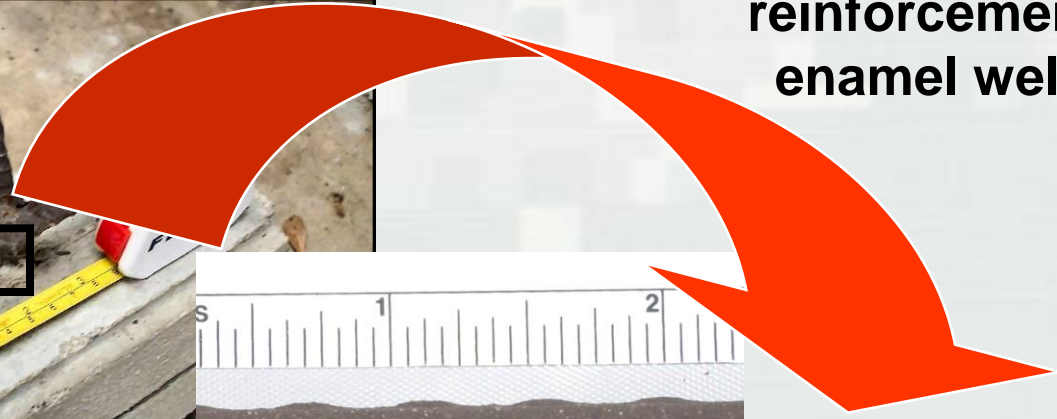
Fusing the glass can also be done by torch, plasma or induction heating.

Multiple coating and multiple firing can be used to build coating thicknesses as needed. Commercial enameling is a continuous process.



Vitreous-Ceramic Coating On Rebar

Mild steels used in reinforcement enamel well



Portland cement is manufactured by firing the clinker at 1400 C

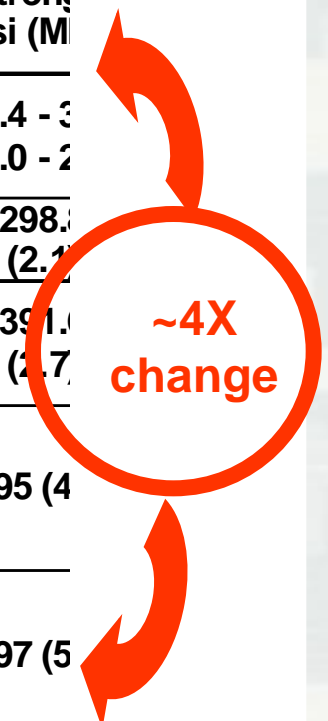
Enamel application produces no changes

After firing cement grains are embedded in glass enamel

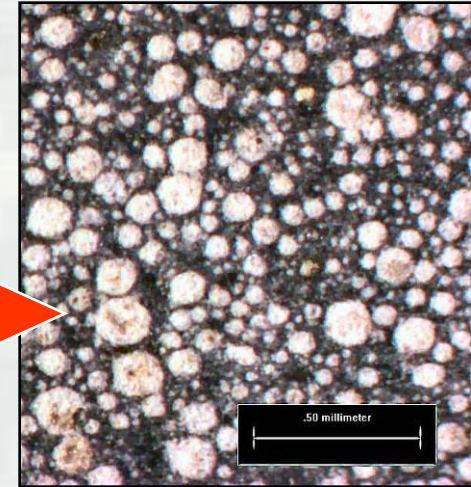


Improved Bond Strength

Treatment	Average Peak Force lbf (N)	Std. Deviation lbf (N)	Average Strength psi (MPa)
Steel fiber embedded in mortar (various published sources)	---	---	295.4 - 300 (2.0 - 2.1)
Steel rods, uncoated embedded in mortar	588.7 (2,618.2)	104.8 (466.2)	298.7 (2.1)
Enameled rods without portland cement embedded in mortar	786.4 (3,497.9)	121.6 (540.8)	391.1 (2.7)
Steel rods, uncoated, surface roughened by grit blasting (reported by PPEC)	--	--	595 (4)
Enameled rods with portland cement (acid surface preparation reported by PPEC)	--	--	797 (5)
Rods with enamel containing portland	2,500.9	52.9	1,274



Hydration of Embedded Cement



Photomicrograph showing embedded cement grains

Moistened surface of rod with bonding enamel show the pH change indicating embedded cement is hydrating



Enameling Provides Excellent Corrosion Resistance



Results of 40-day exposure of mild steel test rods with and without enamel in 3.5% NaCl solution at 20 °C

Coated rods would only corrode if the enamel was intentionally removed.



Quartz sand saturated with 3.5% NaCl solution was test bed



Field Test at Corpus Christi Army Depot

Proximity to Gulf of Mexico makes location prime test site



Corrosion of stirrup rebar in support beam caused end of the beam to fall off



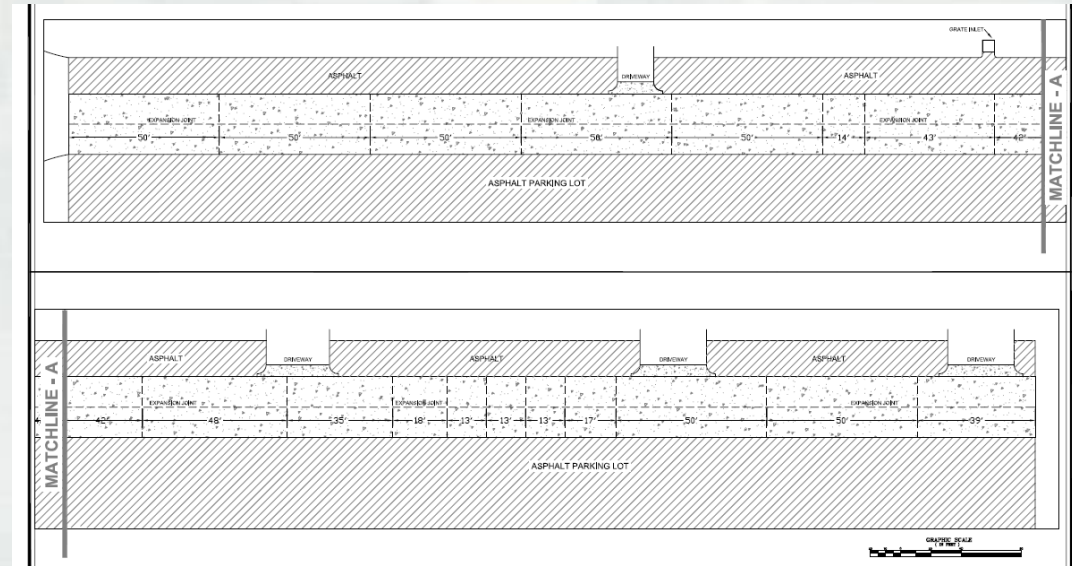
Project replace beams 14,400 sq. ft. of CRCP



BUILDING STRONG®

CCAD Continuously Reinforced Concrete Pavement Section

- 14,400 sq ft
- 600 linear ft of concrete
- 300 linear ft of curb and gutter
- Pavement 6-in thick
- Design to follow AASHTO GHDS-5-M (5000 VPD)
- Post-fabrication enameled #3 and #4 rebar throughout

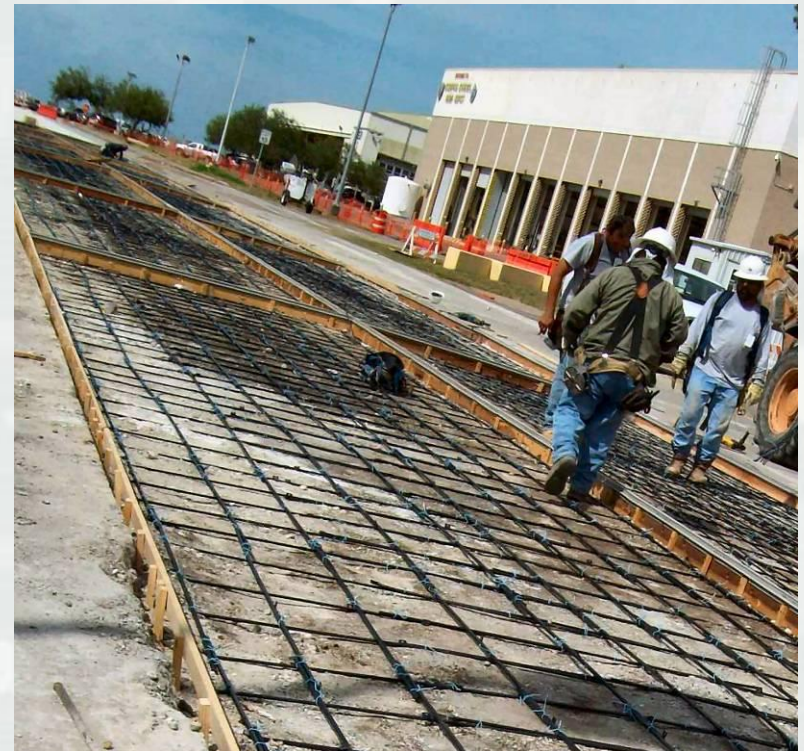


- Corrosion rate will be measured using Linear Polarization Resistance (LPR)
- Crack width surveys will be conducted
- Test samples modeled after G109 test specimen will be monitored



Crecy Street Test Site at CCAD (1)

- Section is 300 linear ft. 24 ft. wide
- Total area = 14, 400 sq. ft.
- Construction used #3 (3/8 in.) rebar as lateral bars
- Longitudinal bars were #4 (1/2 in.) rebar
- Lateral bars spaced at 12.5 in. centers
- Transverse bars spaced on 15 in. centers



Crecy Street Test Site at CCAD (2)

- Pavement is 6-in. thick
- Bars are positioned at mid-depth
- Bars were overlapped to form splices
- The overlaps vary from 12 in. to 20 in.



Finished Section of CRCP at Crecy Street Test Site



The pavement design follows AASHTO GHDS-5-M for a 5000-
car per day traffic load

Photo from August 18, 1909



BUILDING STRONG®

Initial Test Results

- **No corrosion has been detected from either bare or coated bar at test site**
- **Results from the G109 tests suggest the coated bar is significantly less susceptible to corrosion than the bare bar**
- **No crack measurements have been made to date**
- **Corrosion measurement will continue for ~ 2 years**



Summary

- **Enameled rebar with a reactive ceramic component can potentially be used to increase the concrete-to-steel bond strength**
- **The enameled rebar can be manufactured using the conventional enamel application methods and modification of standard alkali-resistant porcelain enamel**
- **Laboratory tests suggest the reactive vitreous enamel can produce significant improvements in the performance and service life of reinforced concrete**
- **Field demonstrations have started in 2009 to evaluate the usefulness and economic benefits of a bonding enamel coating in continuously reinforced concrete pavement**



ACKNOWLEDGEMENTS

The funding for this study was provided by Office of the Under Secretary of Defense (Mr. Dan Dunmire and Dr. Lewis Slotter) and ACSIM-IMA (Mr. David Purcell and Mr. Paul Volkman).



QUESTIONS?



BUILDING STRONG®