



 **Peer Reviewed**

Title:

Prospective Durability Testing of a Vascular Access Phantom

Journal Issue:

[Western Journal of Emergency Medicine, 11\(4\)](#)

Author:

[Schofer, Joel M. MD](#), Naval Medical Center Portsmouth, VA

[Nomura, Jason T MD](#), Christiana Care Health System, Department of Emergency Medicine, Newark, DE

[Bauman, Michael J MD](#), Christiana Care Health System, Department of Emergency Medicine, Newark, DE

[Sierzenski, Paul R MD](#), Christiana Care Health System, Department of Emergency Medicine, Newark, DE

Publication Date:

2010

Publication Info:

Western Journal of Emergency Medicine, Department of Emergency Medicine, UC Irvine

Permalink:

<http://escholarship.org/uc/item/3g0665g0>

Acknowledgements:

Support Disclosure: The Blue Phantom (TM) 2 Vessel Original Ultrasound Training Model was provided by the manufacturer for testing. They had no input into the study design or analysis of the results.

COPYRIGHT RESTRICTIONS: I am a military service member. This work was prepared as part of my official duties. Title 17, USC, 105 provides that 'Copyright protection under this title is not available for any work of the United States Government.' Title 17, USC, 101 defines a U.S. Government work as a work prepared by a military service member or employee of the U.S. Government as part of that person's official duties. The views expressed in this article are those of the authors and do not reflect the official policy or position of the Department of the Navy, Department of Defense, or the United States government.

Address for Correspondence: Joel M. Schofer, MD, 3713 Farnsworth Dr., Chesapeake, VA 23321.
Email: jschofer@gmail.com

Keywords:

ultrasound, medical education, medical simulation, vascular access

Preferred Citation:

JM Schofer, JT Nomura, MJ Bauman, PR Sierzenski. Prospective durability testing of a vascular access phantom. *West J Emerg Med.* 2010;11(4):302-305.



eScholarship
University of California

eScholarship provides open access, scholarly publishing services to the University of California and delivers a dynamic research platform to scholars worldwide.

Report Documentation Page

*Form Approved
OMB No. 0704-0188*

Public reporting burden for the collection of information is estimated to average 1 hour per response, including the time for reviewing instructions, searching existing data sources, gathering and maintaining the data needed, and completing and reviewing the collection of information. Send comments regarding this burden estimate or any other aspect of this collection of information, including suggestions for reducing this burden, to Washington Headquarters Services, Directorate for Information Operations and Reports, 1215 Jefferson Davis Highway, Suite 1204, Arlington VA 22202-4302. Respondents should be aware that notwithstanding any other provision of law, no person shall be subject to a penalty for failing to comply with a collection of information if it does not display a currently valid OMB control number.

1. REPORT DATE JAN 2010	2. REPORT TYPE	3. DATES COVERED 00-00-2010 to 00-00-2010			
4. TITLE AND SUBTITLE Prospective Durability Testing of a Vascular Access Phantom		5a. CONTRACT NUMBER			
		5b. GRANT NUMBER			
		5c. PROGRAM ELEMENT NUMBER			
6. AUTHOR(S)		5d. PROJECT NUMBER			
		5e. TASK NUMBER			
		5f. WORK UNIT NUMBER			
7. PERFORMING ORGANIZATION NAME(S) AND ADDRESS(ES) Naval Medical Center, Portsmouth, VA, 23708		8. PERFORMING ORGANIZATION REPORT NUMBER			
9. SPONSORING/MONITORING AGENCY NAME(S) AND ADDRESS(ES)		10. SPONSOR/MONITOR'S ACRONYM(S)			
		11. SPONSOR/MONITOR'S REPORT NUMBER(S)			
12. DISTRIBUTION/AVAILABILITY STATEMENT Approved for public release; distribution unlimited					
13. SUPPLEMENTARY NOTES					
14. ABSTRACT					
15. SUBJECT TERMS					
16. SECURITY CLASSIFICATION OF:			17. LIMITATION OF ABSTRACT Same as Report (SAR)	18. NUMBER OF PAGES 6	19a. NAME OF RESPONSIBLE PERSON
a. REPORT unclassified	b. ABSTRACT unclassified	c. THIS PAGE unclassified			

Abstract:

Introduction: We assessed the acoustic transmission, image quality, and vessel integrity of the Blue Phantom™ 2 Vessel Original Ultrasound Training Model with repeated use.

Methods: The study consisted of two phases. During the first phase, a portion of the Blue Phantom™ rubber matrix (without a simulated vessel) was placed over a two-tiered echogenic structure and was repeatedly punctured with a hollow bore 18-gauge needle in a 1 cm² area. During the second phase, a portion of the matrix with a simulated vessel was repeatedly punctured with another hollow bore 18-gauge needle. During both phases we obtained an ultrasound image using a high-frequency linear probe after every 100 needle punctures to assess the effect of repeated needle punctures on image quality, acoustic transmission, and simulated vessel integrity.

Results: Testing on the rubber matrix alone (first phase) without a vessel demonstrated a gradual decrease in image quality and visualization of the proximal and distal portions of the target structure, but they remained visible after 1,000 needle punctures. The second phase demonstrated excellent acoustic transmission and image quality on both transverse and longitudinal images of the rubber matrix and simulated vessel after 1,000 needle punctures. The anterior and posterior vessel walls and needle tip were well visualized without any signs of vessel leakage on still images or with compression and power Doppler.

Conclusion: The Blue Phantom™ 2 Vessel Original Ultrasound Training Model demonstrated excellent durability after 1,000 needle punctures in a 1- cm² area. Based on the length of simulated vessel in each model, it should support over 25,000 simulated attempts at vascular access. [West J Emerg Med. 2010; 11(4):302-305.]

License Statement:

This is an Open Access article distributed under the terms of the Creative Commons Non-Commercial Attribution License, which permits its use in any digital medium, provided the original work is properly cited and not altered. For details, please refer to <http://creativecommons.org/licenses/by-nc/3.0/>. Authors grant Western Journal of Emergency Medicine as well as the National Library of Medicine a nonexclusive license to publish the manuscript. Western Journal of Emergency Medicine is produced by the eScholarship Repository and bepress.

Supporting material:

1. Figure 1. Image of the Blue Phantom™ rubber matrix placed over a two-tiered echogenic structure prior to any needle punctures.
2. Figure 2. Image of the Blue Phantom™ rubber matrix placed over a two-tiered echogenic structure after 1,000 needle punctures in a 1 cm² area.
3. Figure 3. Short-axis image of the Blue Phantom™ rubber matrix and simulated vessel prior to any needle punctures.
4. Figure 4. Short-axis image of the Blue Phantom™ rubber matrix and simulated vessel after 1,000 needle punctures in a 1 cm² area.
5. Figure 5. Long-axis image of the Blue Phantom™ rubber matrix, simulated vessel, and needle tip after the initial needle puncture.
6. Figure 6. Long-axis image of the Blue Phantom™ rubber matrix, simulated vessel, and needle tip after 1,000 needle punctures in a 1 cm² area at a 45° angle.



Prospective Durability Testing of a Vascular Access Phantom

Joel M. Schofer, MD*

Jason T. Nomura, MD†

Michael J. Bauman, MD†

Paul R. Sierzenski, MD†

* Naval Medical Center, Portsmouth, VA

† Christiana Care Health System, Department of Emergency Medicine, Newark, DE

Supervising Section Editor: J Christian Fox, MD

Submission history: Submitted July 26, 2009; Revision Received January 24, 2010; Accepted February 22, 2010

Reprints available through open access at http://escholarship.org/uc/uciem_westjem

Introduction: We assessed the acoustic transmission, image quality, and vessel integrity of the Blue Phantom™ 2 Vessel Original Ultrasound Training Model with repeated use.

Methods: The study consisted of two phases. During the first phase, a portion of the Blue Phantom™ rubber matrix (without a simulated vessel) was placed over a two-tiered echogenic structure and was repeatedly punctured with a hollow bore 18-gauge needle in a 1 cm² area. During the second phase, a portion of the matrix with a simulated vessel was repeatedly punctured with another hollow bore 18-gauge needle. During both phases we obtained an ultrasound image using a high-frequency linear probe after every 100 needle punctures to assess the effect of repeated needle punctures on image quality, acoustic transmission, and simulated vessel integrity.

Results: Testing on the rubber matrix alone (first phase) without a vessel demonstrated a gradual decrease in image quality and visualization of the proximal and distal portions of the target structure, but they remained visible after 1,000 needle punctures. The second phase demonstrated excellent acoustic transmission and image quality on both transverse and longitudinal images of the rubber matrix and simulated vessel after 1,000 needle punctures. The anterior and posterior vessel walls and needle tip were well visualized without any signs of vessel leakage on still images or with compression and power Doppler.

Conclusion: The Blue Phantom™ 2 Vessel Original Ultrasound Training Model demonstrated excellent durability after 1,000 needle punctures in a 1- cm² area. Based on the length of simulated vessel in each model, it should support over 25,000 simulated attempts at vascular access. [West J Emerg Med. 2010; 11(4):302-305.]

INTRODUCTION

A large body of medical research advocates the use of ultrasound guidance when obtaining central and peripheral vascular access.¹⁻¹⁸ In addition, major governmental organizations have recommended using ultrasound guidance when obtaining central venous access.^{19,20}

The increasing use of ultrasound guidance for vascular access has created an educational need. Vascular access phantoms that mimic human soft tissue and vascular structures allow for ultrasound-guided vascular access training without exposing patients to painful, risky procedures. While private corporations have begun producing these vascular access phantoms, they are often expensive and have not been subject

to independent testing to ensure durability with repeated use.

The Blue Phantom™ (Kirkland, WA) 2 Vessel Original Ultrasound Training Model is commonly used to teach ultrasound-guided peripheral vascular access and therefore was selected for durability testing. It consists of a rubber matrix and fluid-filled tubes simulating human soft tissue and peripheral vascular structures, respectively. We conducted independent durability testing to assess its acoustic transmission, image quality, and vessel integrity with repeated use.

METHODS

The study, approved by the local institutional review committee consisted of two phases. During the first phase a

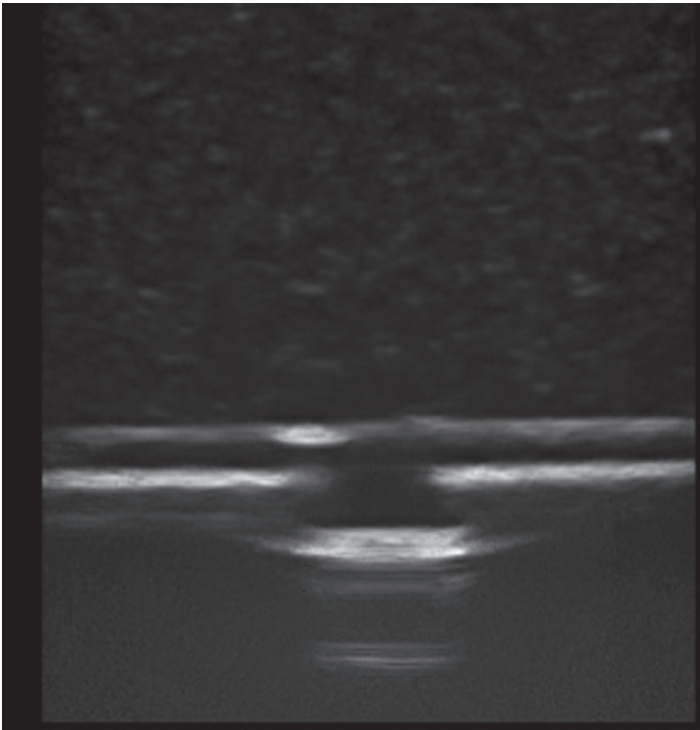


Figure 1. Image of the Blue Phantom™ rubber matrix placed over a two-tiered echogenic structure prior to any needle punctures.

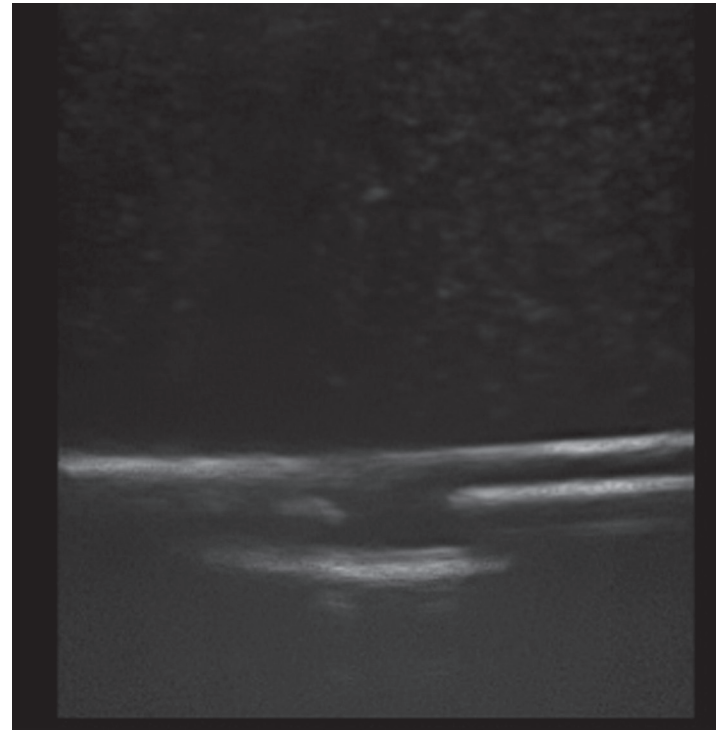


Figure 2. Image of the Blue Phantom™ rubber matrix placed over a two-tiered echogenic structure after 1,000 needle punctures in a 1 cm² area.

portion of the Blue Phantom™ rubber matrix (without a simulated vessel) was placed over an echogenic structure, in a water bath, and repeatedly punctured with a hollow bore 18-gauge needle in a 1 cm² area. We did this to test the acoustic transmission of the rubber matrix and visibility of the echogenic structure with repeated punctures. During the second phase we repeatedly punctured a portion of the matrix with a simulated vessel with another hollow bore 18-gauge needle in a 1 cm² area at a 45° angle. The simulated vessel was assessed for fluid leakage with active compression and power Doppler.

During both phases we obtained an ultrasound image using a Sonosite™ (Bothell, WA) M-Turbo ultrasound machine with a 25mm, 6-13 MHz linear probe after every 100 needle punctures to assess the effect of repeated needle punctures on image quality, acoustic transmission, and simulated vessel integrity. All settings (depth, gain, frequency, etc.) were unchanged during the acquisition of images. All images were obtained and later assessed qualitatively in digital format in an unblinded fashion by four board certified/eligible emergency physicians who were in an emergency ultrasound fellowship or had completed a fellowship. Both phases of the study were concluded after a total of 1,000 needle punctures.

RESULTS

The first phase of testing on the rubber matrix alone without a vessel demonstrated a gradual decrease in image quality and visualization of the proximal and distal portions of

the target structure, but they remained visible after 1,000 needle punctures. (Figures 1-2)

The second phase of the study demonstrated excellent acoustic transmission and image quality on both short- and long-axis images of the rubber matrix and simulated vessel after 1,000 needle punctures. The anterior and posterior vessel walls and needle tip were well visualized without any signs of vessel leakage on still images or with compression and power Doppler. (Figures 3-6)

DISCUSSION

The Blue Phantom™ 2 Vessel Original Ultrasound Training Model demonstrated excellent durability after 1,000 needle punctures in a 1 cm² area. The rubber matrix demonstrated a gradual decrease in acoustic transmission, but this did not affect the ability to visualize the anterior and posterior walls of the simulated vessel or the needle tip. The integrity of the simulated vessel was well preserved without any signs of vessel leakage.

LIMITATIONS

This study tested only one of the many different commercially available vascular access phantoms; therefore, the results may not be applicable to other products on the market. In addition, because we only punctured the simulated vessel and rubber matrix with an 18-gauge needle, these results may not be reproduced if a different needle size or a catheter/needle combination is used. Despite the

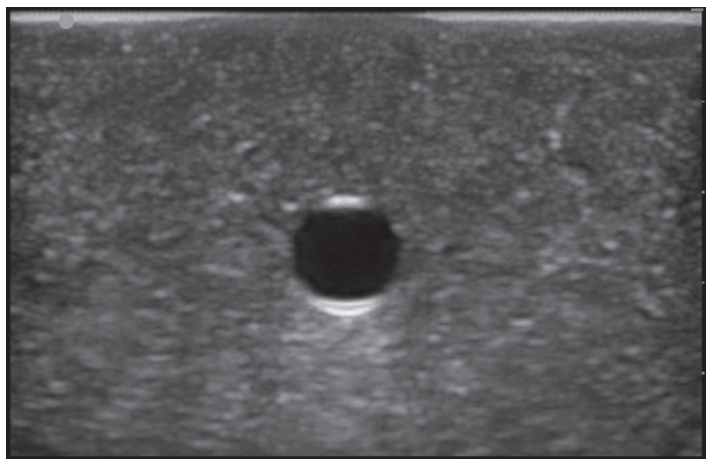


Figure 3. Short-axis image of the Blue Phantom™ rubber matrix and simulated vessel prior to any needle punctures.

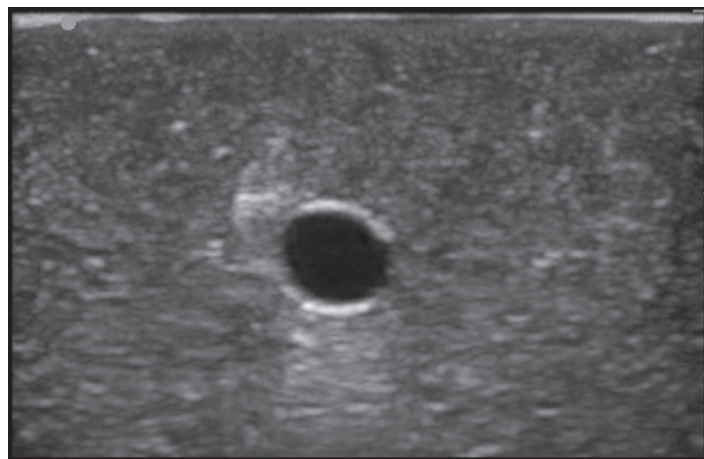


Figure 4. Short-axis image of the Blue Phantom™ rubber matrix and simulated vessel after 1,000 needle punctures in a 1 cm² area.

manufacturer's recommendation against this, some users who access the simulated vessel aspirate and then re-inject the fluid into the vessel, which often leads to air deposits in the phantom material. This practice and the air deposited can lead to more rapid image degradation than was seen in our study. Further research could address these variables.

CONCLUSION

If the full length of simulated vessel contained in this vascular access phantom is used (excluding the vessel on the ends of the phantom), each model should support over 25,000 simulated attempts at vascular access without significant degradation in the integrity of the simulated vessel or the ultrasound image produced.

SUPPORT DISCLOSURE

The Blue Phantom™ 2 Vessel Original Ultrasound Training Model was provided by the manufacturer for testing. They had no input into the study design or analysis of the results.

Address for Correspondence: Joel M. Schofer, MD, 3713 Farnsworth Dr., Chesapeake, VA 23321. Email: jschofer@gmail.com

Conflicts of Interest: By the WestJEM article submission agreement, all authors are required to disclose all affiliations, funding sources, and financial or management relationships that could be perceived as potential sources of bias. The authors disclosed none.

I am a military service member. This work was prepared as part of my official duties. Title 17, USC, 105 provides that 'Copyright protection under this title is not available for any work of the United States Government.' Title 17, USC, 101 defines a U.S. Govern-

ment work as a work prepared by a military service member or employee of the U.S. Government as part of that person's official duties.

The views expressed in this article are those of the authors and do not reflect the official policy or position of the Department of the Navy, Department of Defense, or the United States government.

REFERENCES

1. Arun Prasad G, Niazi A, Chan V. Ultrasound averts inadvertent injury during internal jugular vein cannulation. *Can J Anaesth.* 2009;56:85-6.
2. Bair AE, Rose JS, Vance CW, et al. Ultrasound-assisted peripheral venous access in young children: A randomized controlled trial and pilot feasibility study. *WestJEM.* 2008;9:219-24.
3. Brannam L, Blaivas M, Lyon M, et al. Emergency nurses' utilization of ultrasound guidance for placement of peripheral intravenous lines in difficult-access patients. *Acad Emerg Med.* 2004;11:1361-3.
4. Caridi JG, Hawkins IF, Jr, Wiechmann BN, et al. Sonographic guidance when using the right internal jugular vein for central vein access. *AJR Am J Roentgenol.* 1998;171:1259-63.
5. Conz PA, Dissegna D, Rodighiero MP, et al. Cannulation of the internal jugular vein: Comparison of the classic seldinger technique and an ultrasound guided method. *J Nephrol.* 1997;10:311-3.
6. Costantino TG, Parikh AK, Satz WA, et al. Ultrasonography-guided peripheral intravenous access versus traditional approaches in patients with difficult intravenous access. *Ann Emerg Med.* 2005;46:456-61.
7. Gallieni M, Cozzolino M. Uncomplicated central vein catheterization of high risk patients with real time ultrasound guidance. *Int J Artif Organs.* 1995;18:117-21.

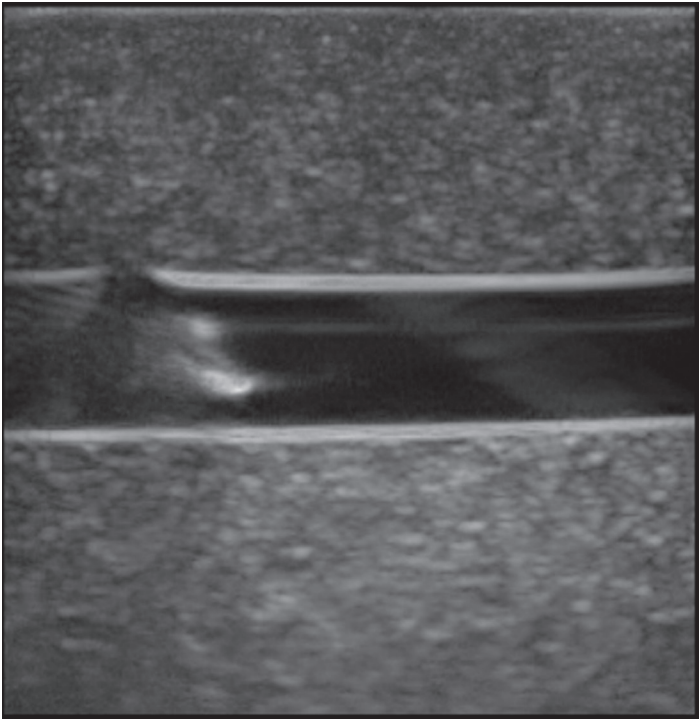


Figure 5. Long-axis image of the Blue Phantom™ rubber matrix, simulated vessel, and needle tip after the initial needle puncture.

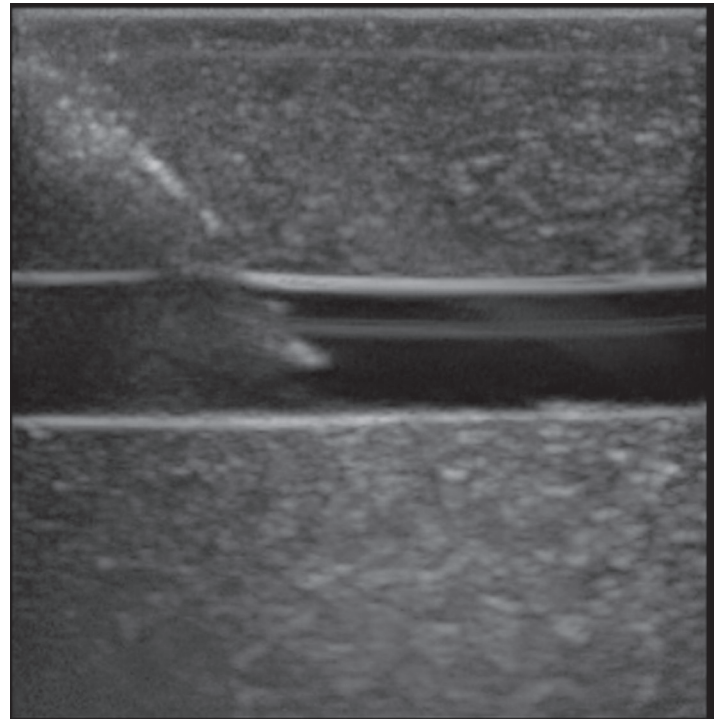


Figure 6. Long-axis image of the Blue Phantom™ rubber matrix, simulated vessel, and needle tip after 1,000 needle punctures in a 1 cm² area at a 45° angle.

8. Hilty WM, Hudson PA, Levitt MA, et al. Real-time ultrasound-guided femoral vein catheterization during cardiopulmonary resuscitation. *Ann Emerg Med.* 1997;29:331-6; discussion 337.
9. Hudson PA, Rose JS. Real-time ultrasound guided internal jugular vein catheterization in the emergency department. *Am J Emerg Med.* 1997;15:79-82.
10. Keyes LE, Frazee BW, Snoey ER, et al. Ultrasound-guided brachial and basilic vein cannulation in emergency department patients with difficult intravenous access. *Ann Emerg Med.* 1999;34:711-4.
11. Lamperti M, Caldiroli D, Cortellazzi P, et al. Safety and efficacy of ultrasound assistance during internal jugular vein cannulation in neurosurgical infants. *Intensive Care Med.* 2008;34:2100-5.
12. Lee W, Leduc L, Cotton DB. Ultrasonographic guidance for central venous access during pregnancy. *Am J Obstet Gynecol.* 1989;161:1012-3.
13. Leung J, Duffy M, Finckh A. Real-time ultrasonographically-guided internal jugular vein catheterization in the emergency department increases success rates and reduces complications: A randomized, prospective study. *Ann Emerg Med.* 2006;48:540-7.
14. Miller AH, Roth BA, Mills TJ, et al. Ultrasound guidance versus the landmark technique for the placement of central venous catheters in the emergency department. *Acad Emerg Med.* 2002;9:800-5.
15. Milling TJ, Jr, Rose J, Briggs WM, et al. Randomized, controlled clinical trial of point-of-care limited ultrasonography assistance of central venous cannulation: The third sonography outcomes assessment program (SOAP-3) trial. *Crit Care Med.* 2005;33:1764-9.
16. Pirotte T. Ultrasound-guided vascular access in adults and children: Beyond the internal jugular vein puncture. *Acta Anaesth Belg.* 2008;59:157-66.
17. Shiver S, Blaivas M, Lyon M. A prospective comparison of ultrasound-guided and blindly placed radial arterial catheters. *Acad Emerg Med.* 2006;13:1275-9.
18. Slama M, Novara A, Safavian A, et al. Improvement of internal jugular vein cannulation using an ultrasound-guided technique. *Intensive Care Med.* 1997;23:916-9.
19. Technology appraisal guidance no. 49 - guidance of the use of ultrasound locating devices for placing central venous catheters. 2002;1-21.
20. Shojania KG, Duncan BW, McDonald KM, et al. Making health care safer: A critical analysis of patient safety practices. *Evidence Report/Technology Assessment No. 43 (Prepared by the University of California at San Francisco—Stanford Evidence-based Practice Center under Contract No. 290-97-0013), AHRQ Publication No. 01-E058.* 2001;245-54.