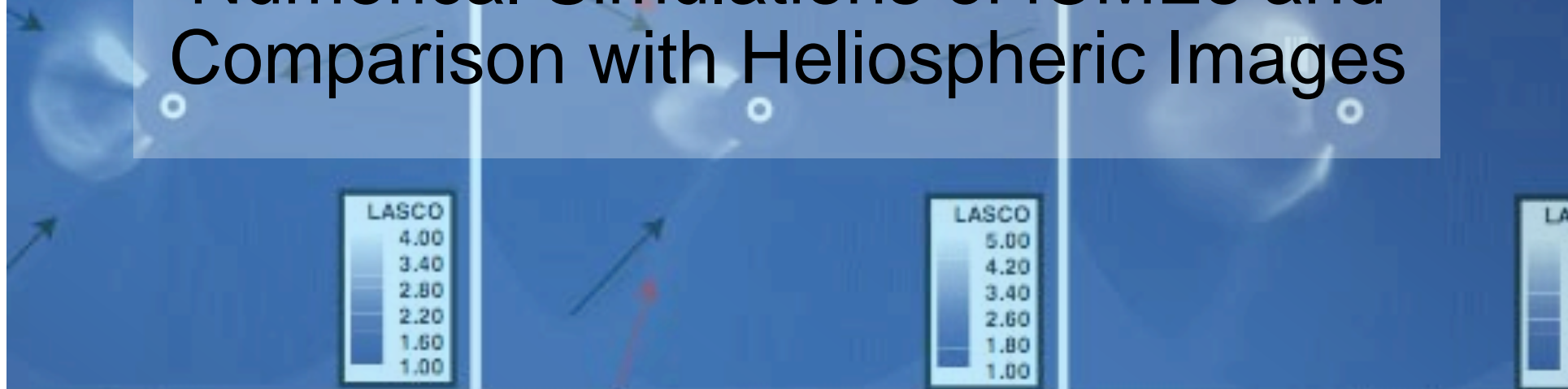


01/24 1815UT

01/25 0815UT

01/25 1015UT

Numerical Simulations of iCMEs and Comparison with Heliospheric Images



Noé Lugaz & Iliia Roussev

Institute for Astronomy

Angelos Vourlidas

Naval Research Laboratory

W. Manchester, T. Gombosi

University of Michigan

European Geosciences Union,
May 6, 2010

Report Documentation Page

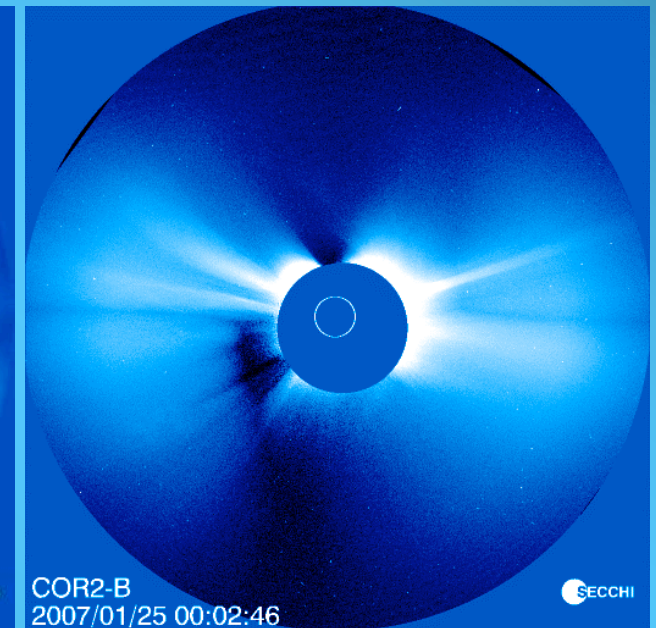
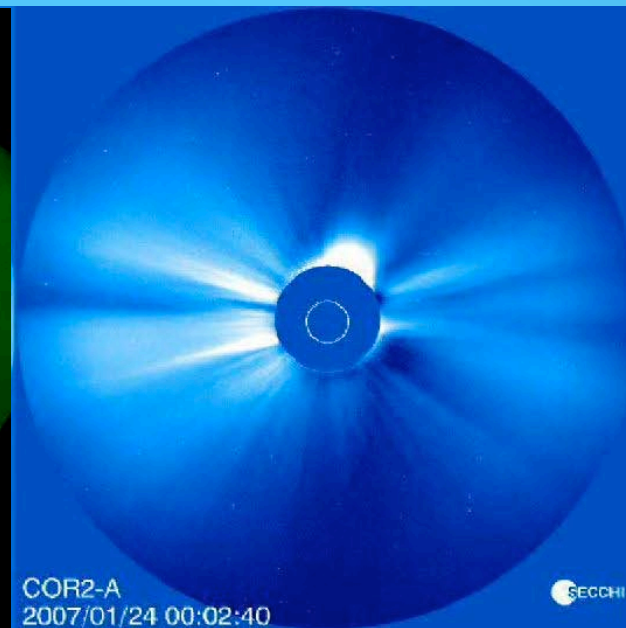
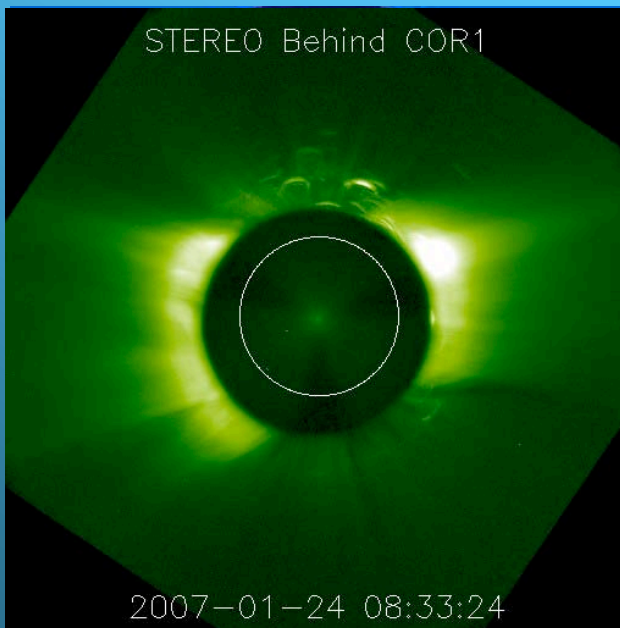
*Form Approved
OMB No. 0704-0188*

Public reporting burden for the collection of information is estimated to average 1 hour per response, including the time for reviewing instructions, searching existing data sources, gathering and maintaining the data needed, and completing and reviewing the collection of information. Send comments regarding this burden estimate or any other aspect of this collection of information, including suggestions for reducing this burden, to Washington Headquarters Services, Directorate for Information Operations and Reports, 1215 Jefferson Davis Highway, Suite 1204, Arlington VA 22202-4302. Respondents should be aware that notwithstanding any other provision of law, no person shall be subject to a penalty for failing to comply with a collection of information if it does not display a currently valid OMB control number.

| | | | |
|--|------------------------------------|--|----------------------------------|
| 1. REPORT DATE 06 MAY 2010 | 2. REPORT TYPE | 3. DATES COVERED | |
| 4. TITLE AND SUBTITLE Numerical Simulations of iCMEs and Comparison with Heliospheric Images | | 5a. CONTRACT NUMBER | |
| | | 5b. GRANT NUMBER | |
| | | 5c. PROGRAM ELEMENT NUMBER | |
| 6. AUTHOR(S) | | 5d. PROJECT NUMBER | |
| | | 5e. TASK NUMBER | |
| | | 5f. WORK UNIT NUMBER | |
| 7. PERFORMING ORGANIZATION NAME(S) AND ADDRESS(ES) Institute for Astronomy, , , , , | | 8. PERFORMING ORGANIZATION REPORT NUMBER | |
| 9. SPONSORING/MONITORING AGENCY NAME(S) AND ADDRESS(ES) | | 10. SPONSOR/MONITOR'S ACRONYM(S) | |
| | | 11. SPONSOR/MONITOR'S REPORT NUMBER(S) | |
| 12. DISTRIBUTION/AVAILABILITY STATEMENT Approved for public release; distribution unlimited. | | | |
| 13. SUPPLEMENTARY NOTES The original document contains color images. | | | |
| 14. ABSTRACT | | | |
| 15. SUBJECT TERMS | | | |
| 16. SECURITY CLASSIFICATION OF: | | | 17. LIMITATION OF ABSTRACT |
| a. REPORT unclassified | b. ABSTRACT unclassified | c. THIS PAGE unclassified | |
| | | | 18. NUMBER OF PAGES 13 |
| | | | 19a. NAME OF RESPONSIBLE PERSON |

The 2007 January 24-26 CMEs

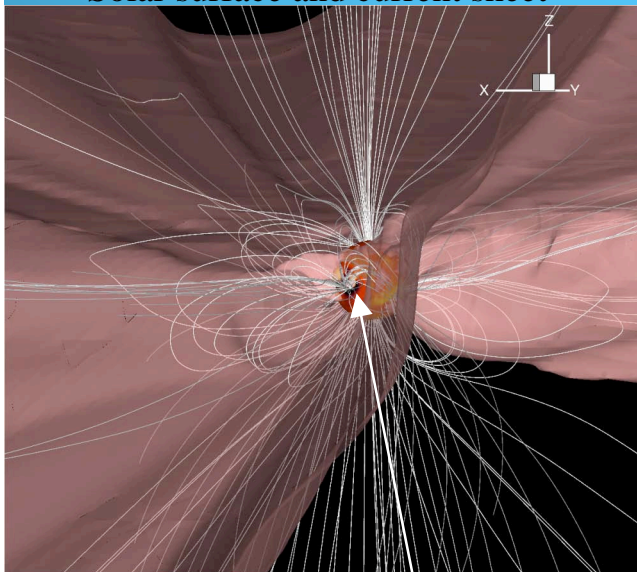
- First major CMEs observed by the SECCHI suite...
... but with a 20 hour gap while the CMEs were in HI1's FOV.
- *1st CME*: 01/24 @14:03 ~700 km/s - *2nd CME*: 01/25 @06:43 ~1200 km/s
- Data gap: 01/25 06 UT to 01/26 00 UT
- Studied by Harrison et al. (2008) and Webb et al. (2009).
- Simulated by Lugaz et al. (2009) and Odstroil et al. (2009).



Simulation set-up

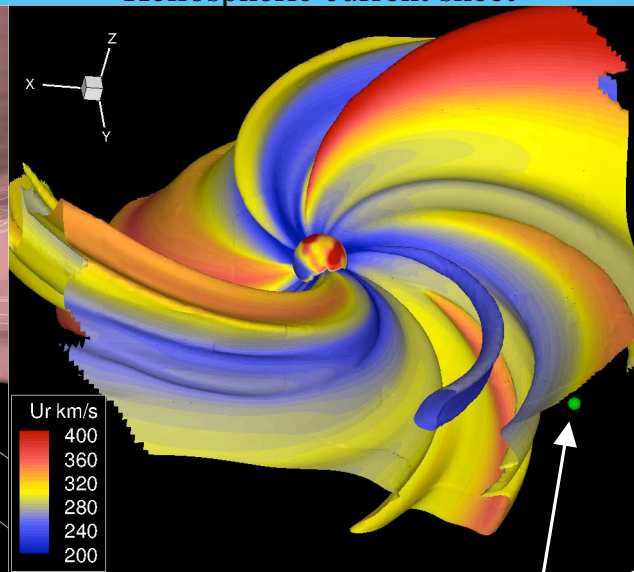
- ☉ Space Weather Modeling Framework (Univ. Michigan)
- ☉ Solar wind model of Cohen et al. (2007), out-of-equilibrium flux ropes chosen to match initial observed speed.
- ☉ From $1R_{\text{Sun}}$ to 1 AU: 40,000 4^3 blocks + 15,000 8^3 blocks (> 10M cells)

Solar surface and current sheet



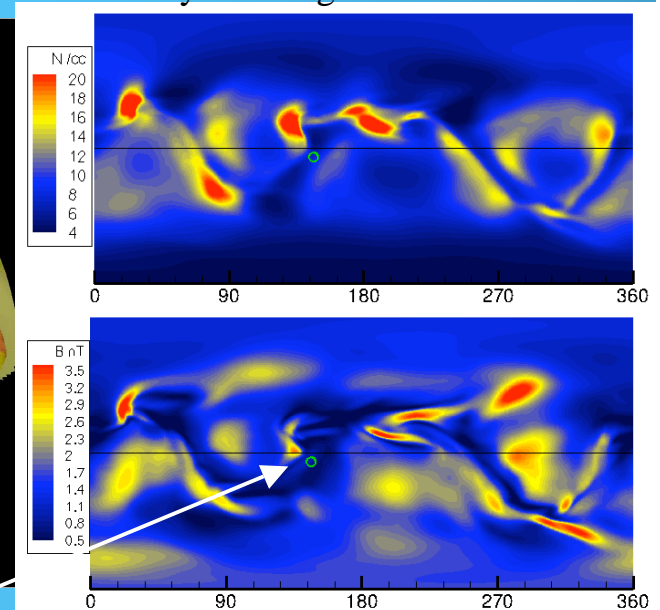
AR 940

Heliospheric current sheet



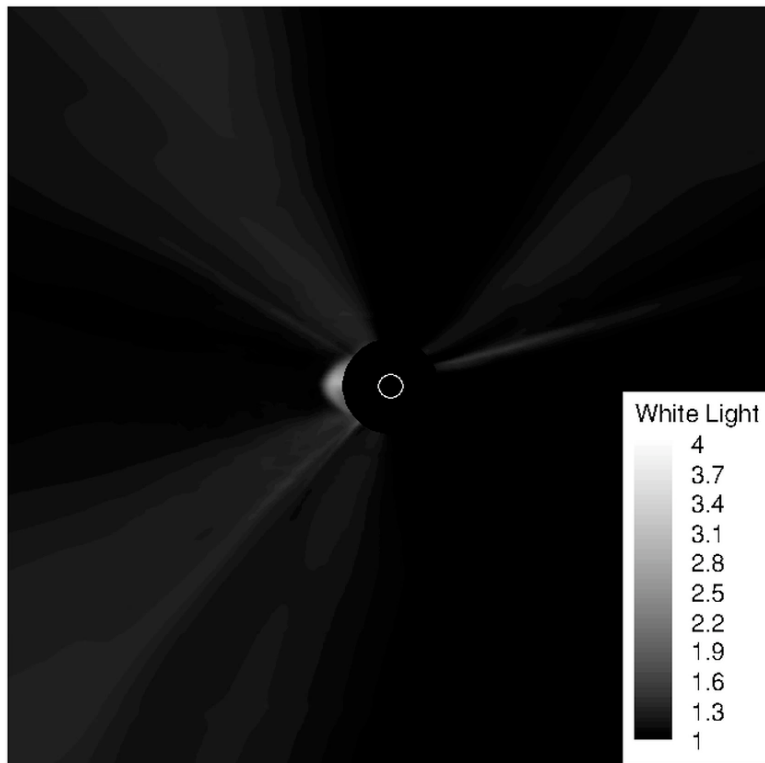
Earth (2007, January 24)

Density and magnetic field at 1 AU

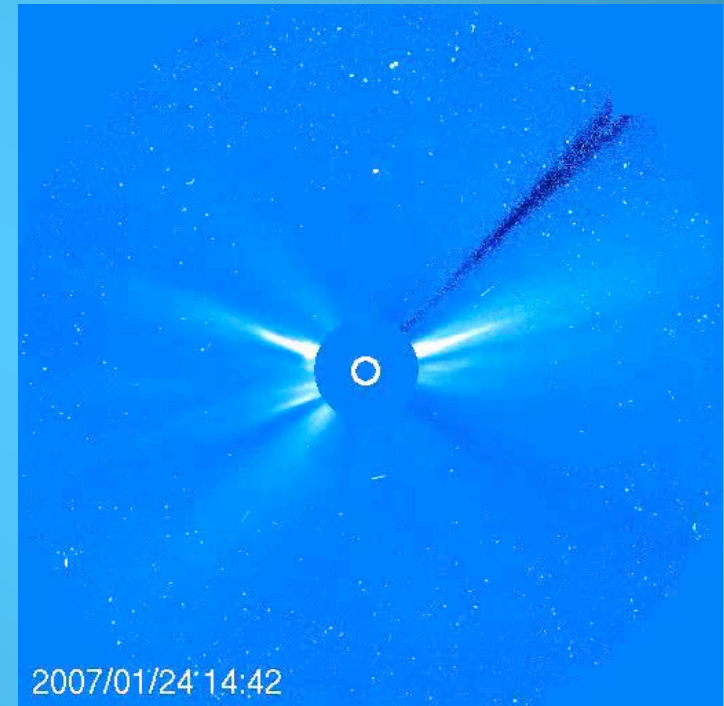


Line-of-sight images

- ☉ Simulated background is calculated by deriving the minimum image from 27 steady-state LOS images.



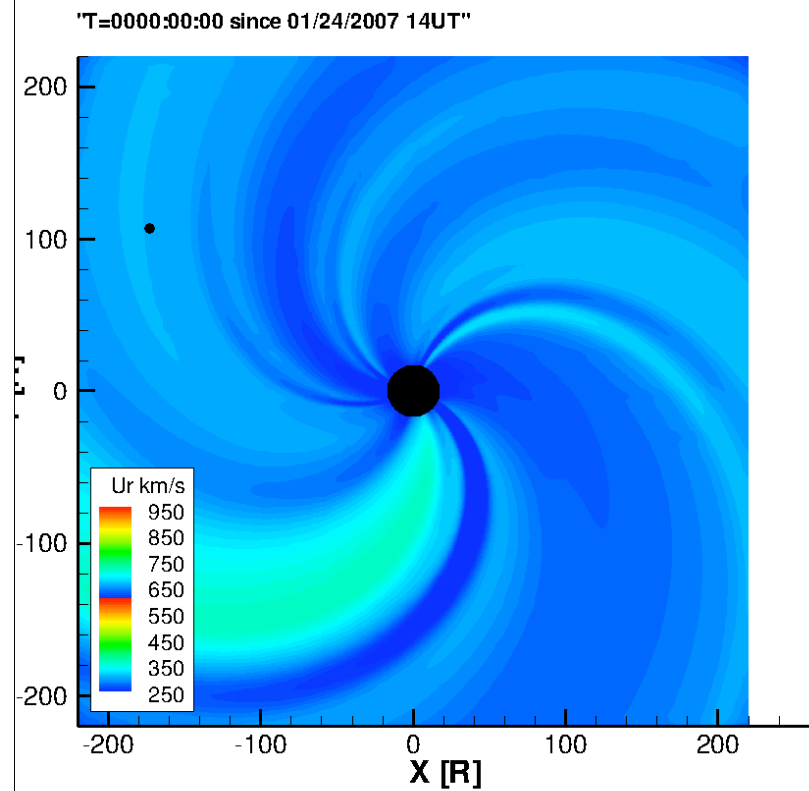
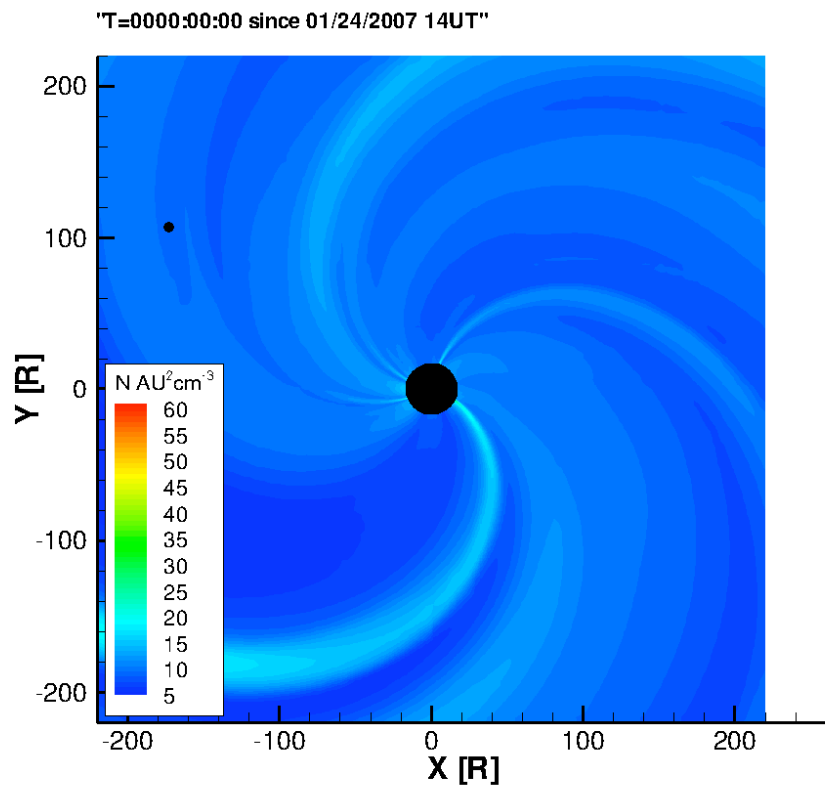
T = 15:00:00 since January 24, 2007 00 UT



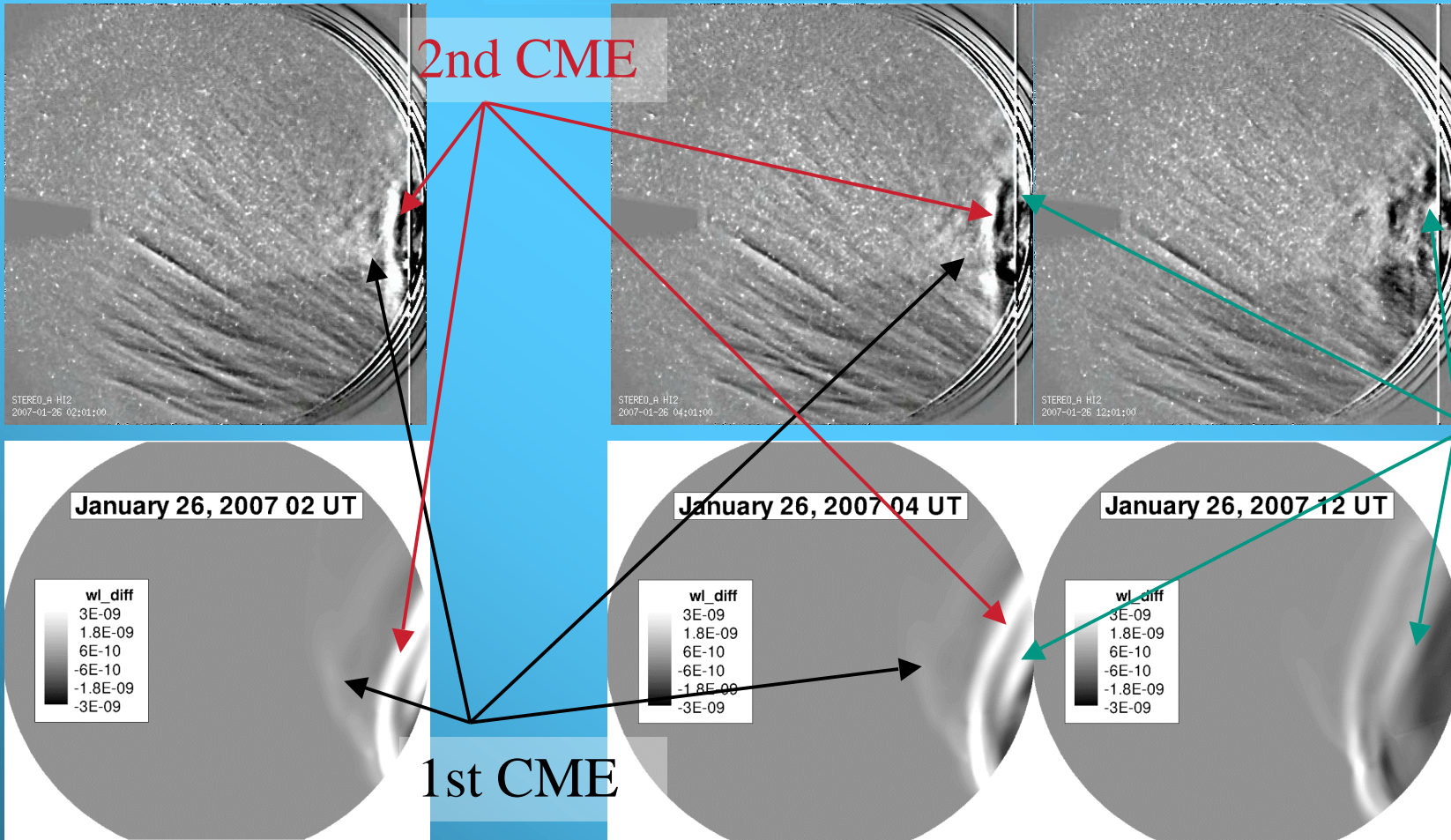
Heliospheric Evolution



- ☉ Near solar minimum: there are a number of steady structures (CIR-like).
- ☉ Interaction involves not only the 2 CMEs but also these dense streams.

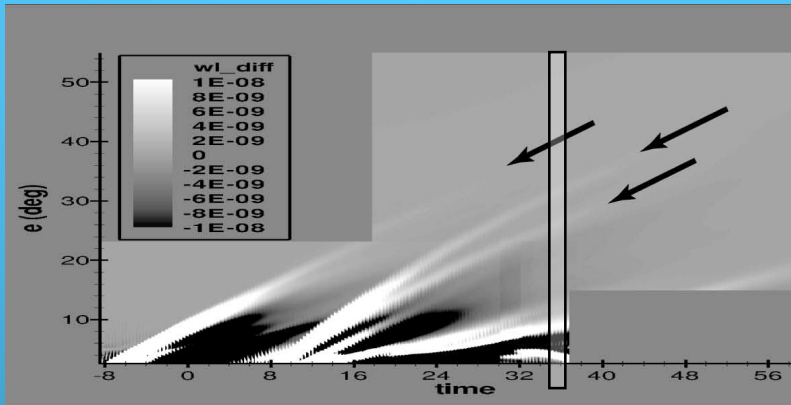


Heliospheric Imagers: what is being observed?

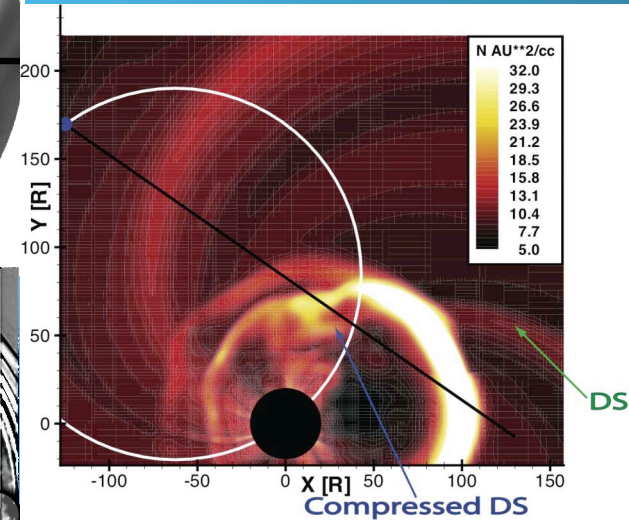
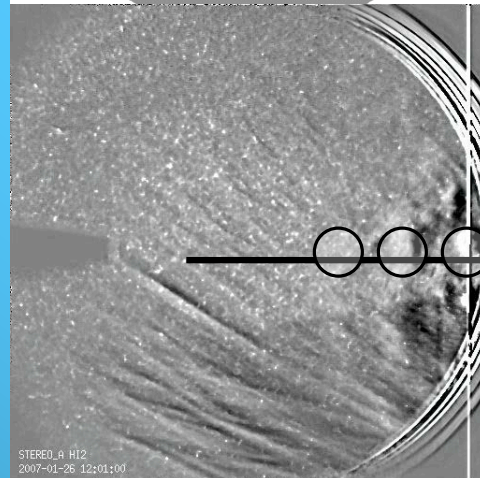
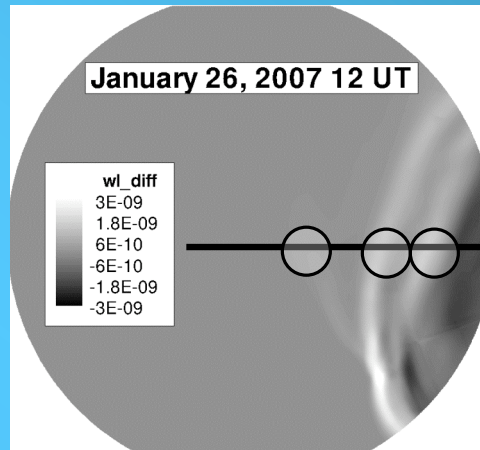
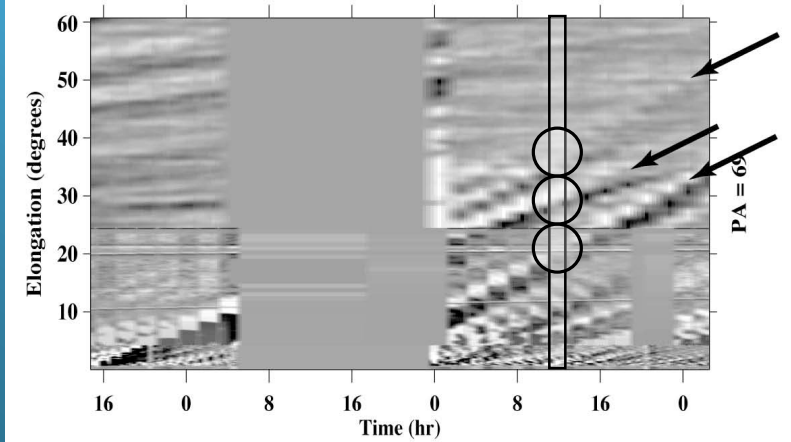


2nd CME is brighter because the leading front propagates inside the sheath of the 1st CME.
Dense stream can be identified as such in these images, because its propagation speed is different.

Time-elongation plots

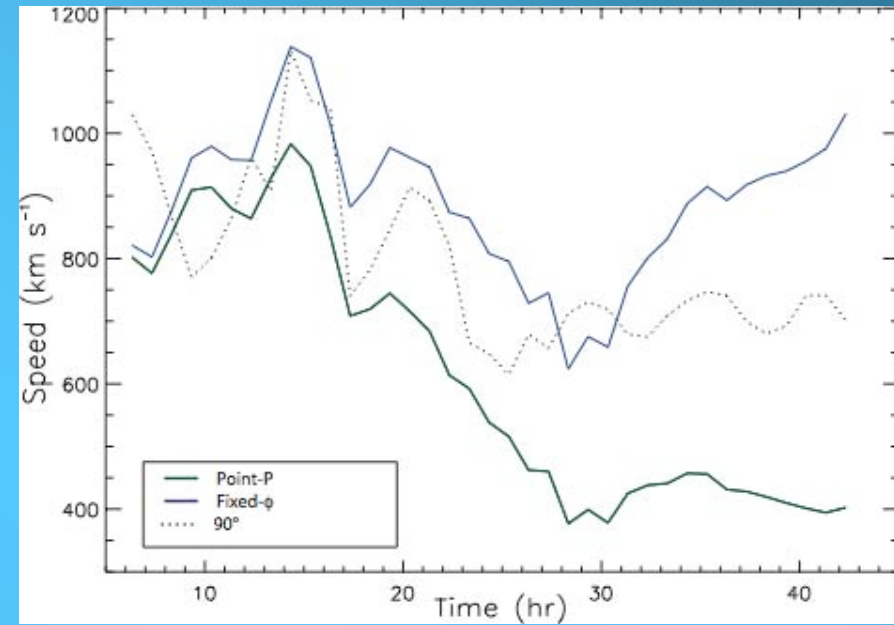
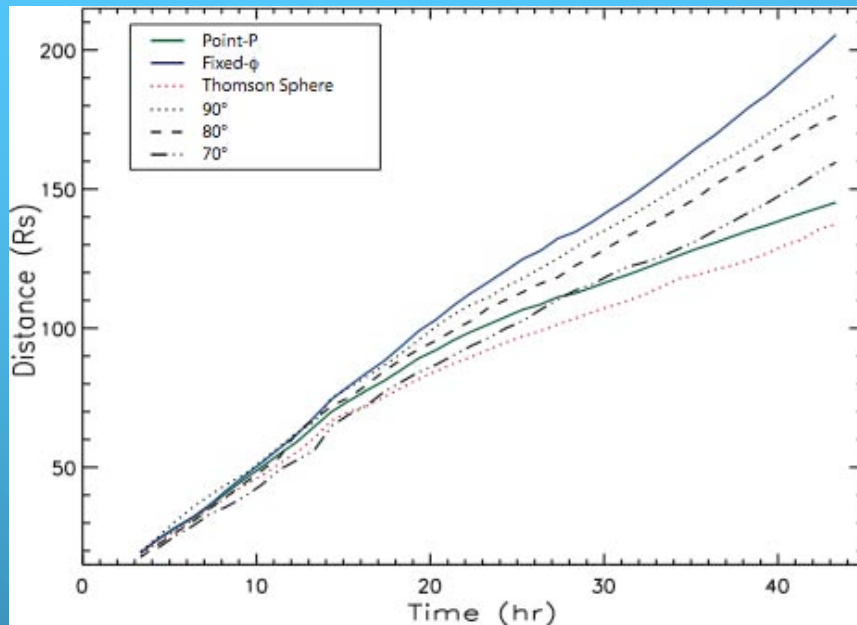


2007-1-24 to 2007-1-27



Time (from 01/25)-elongation plots for PA 69 (apparent central PA of SECCHI).

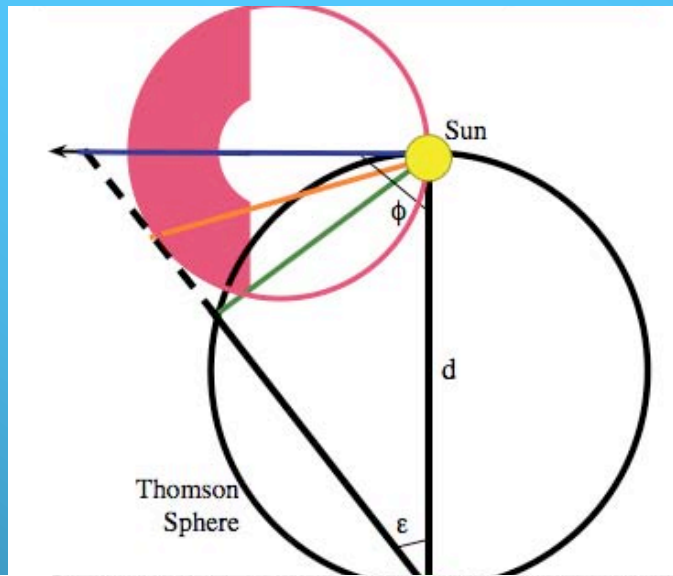
Simulations as laboratory: Testing position and velocity estimates



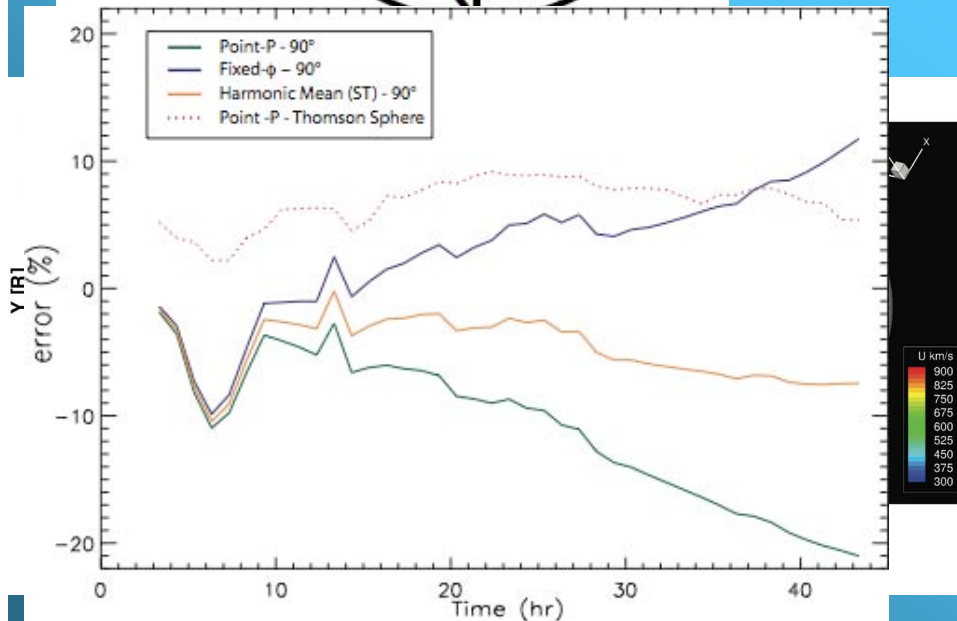
- ☉ Here testing method to derive position from elongation measurements (Kahler et al., Rouillard et al.).
 - Fixed-Phi: Approximates CME with a single point
 - Point-P: Approximates CME with an expanding sphere centered at the Sun
- ☉ Position is well determined up to 0.5 AU.
- ☉ Speed is not very well determined from existing methods, especially for wide, limb ejections past 0.5 AU.

New geometrical method to derive CME position from elongation angle

(Lugaz et al. Ann Geo, 2009)



- Instead of using single-point approximation or assuming a spherically symmetric front we use a sphere attached to the Sun.
- New assumption is good for wide CMEs (better than Point-P).
- It can be shown that:



$$r_{F\phi} = d \sin \epsilon / \sin (\epsilon + \phi)$$

$$r_{PP} = d \sin \epsilon$$

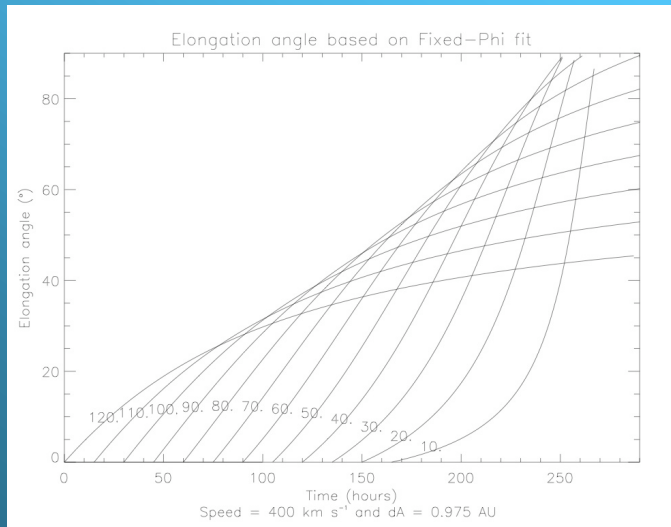
$$r = 2d \sin \epsilon / (1 + \sin (\epsilon + \phi))$$

$$1/r = .5 (1/r_{PP} + 1/r_{F\phi})$$

Simulations as controlled laboratory environment



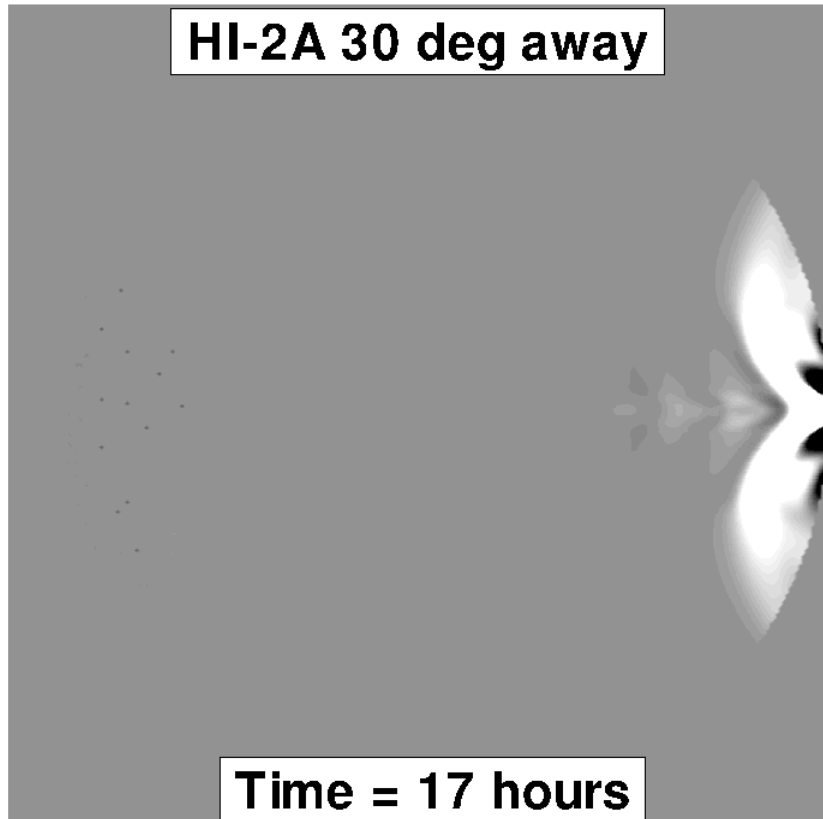
- ☀ Testing fitting methods to derive CME direction.
 - ☀ Devised for plasma blobs/CIRs with 3 assumptions:
 - constant direction, stereoscopic methods: Liu (2010), Lugaz (2010) in ApJ
 - small CME width, statistical study or different assumption
 - constant speed. statistical study difficult (lack of fast CMEs)
- Simulations



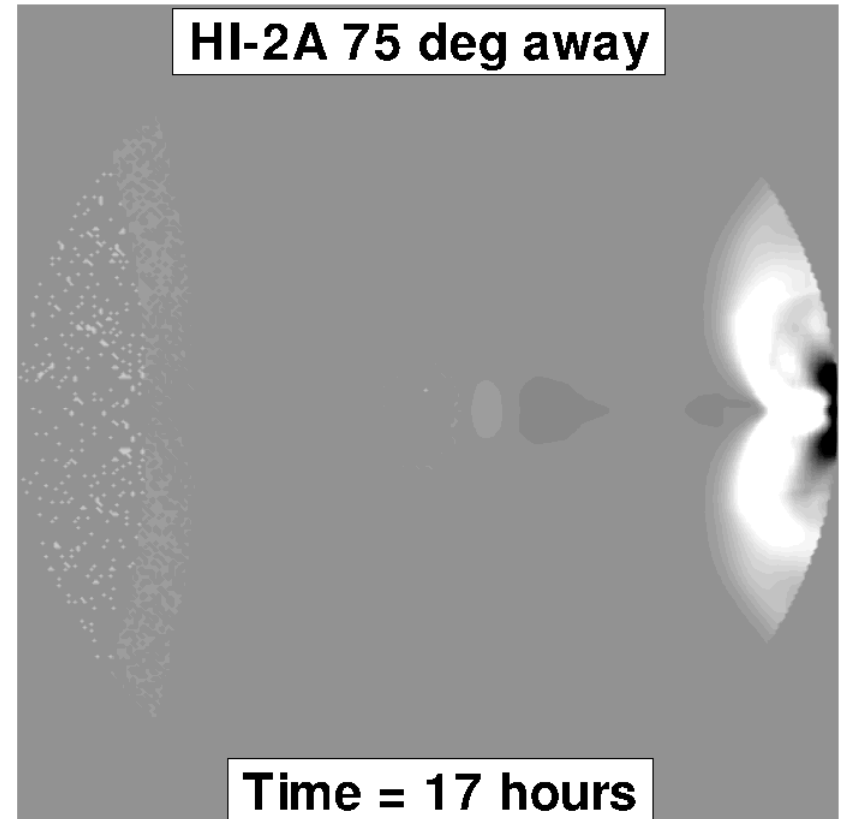
- ☀ Worst case scenario for fitting method:
 - Fast CME
 - Very wide
 - *In front of a coronal hole* (not done here)
- ☀ We do a simulation of a 800 km/s wide CME (at 20 Rs) into a solar minimum configuration (bipolar magnetic field).

Same CME from 2 different view points

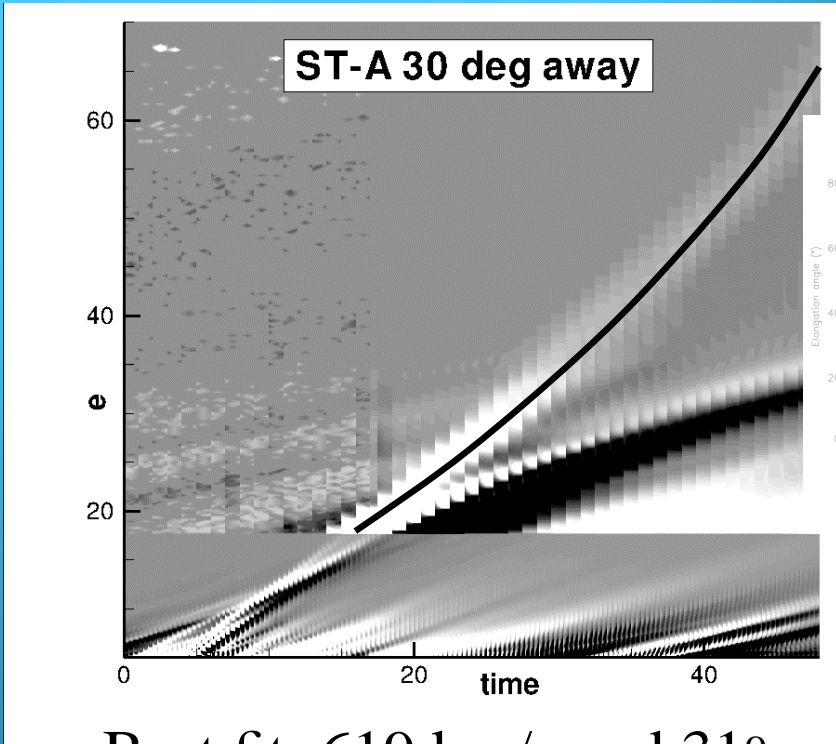
HI-2A 30 deg away



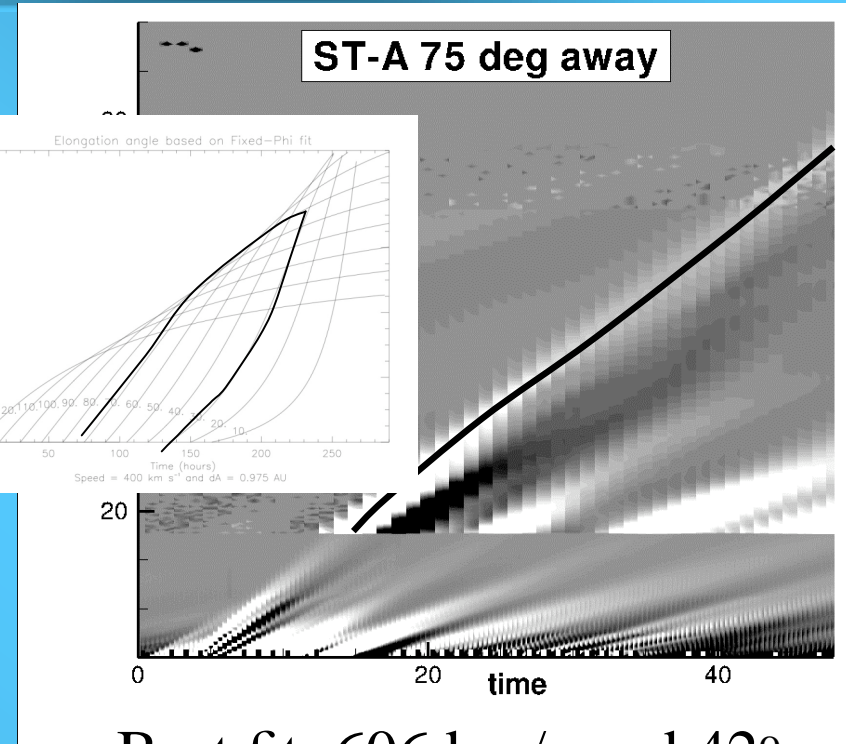
HI-2A 75 deg away



J-maps and direction



Best fit: 619 km/s and 31°
[585-659] and [22°,45°]



Best fit: 606 km/s and 42°
[561-694] and [27°,66°]

- ⊗ "Geometrical" acceleration/deceleration not as clear as expected.
- ⊗ Good for small directions (*halo CMEs*), large underestimation of large directions (*limb CMEs*).
- ⊗ MORE at my poster tomorrow ([EGU2010-3691](#)).

Conclusion



- ☉ Simulations are an important tool in support of HI observations
- ☉ For complex events (CME-CME interaction):
 - ☉ What happened? (Lugaz et al., *Sol. Phys.*, 2009, Webb et al, *Sol Phys*, 09)
 - ☉ Testing different physical mechanisms (Lugaz et al., *Ann. Geo.*, 2009)
- ☉ To test and validate methods:
 - ☉ Simulations are like a controlled laboratory environment:
 - ◆ CME speed and direction are known,
 - ◆ Can vary only one parameter.
 - ☉ We tested the Fixed-Phi and Point-P approximations.
 - ☉ We devised a new approximation which fits better our simulated CME and is important at large elongation angles (beyond 40°).
 - ☉ Lack of fast/wide CMEs may explain why fitting method work so well so far.
- ☉ Thanks to NASA and NSF for funding.