

Shortening the Insertion Time for Materials Technologies— the 21st Century Metals Challenge

Dennis M. Dimiduk & Rollie Dutton
Materials and Manufacturing Directorate
Air Force Research Laboratory



Acknowledgements:

Lee Semiatin, Jim Larsen

Advanced Metallics Research Group

Leo Christodoulou, Steve Wax



Report Documentation Page

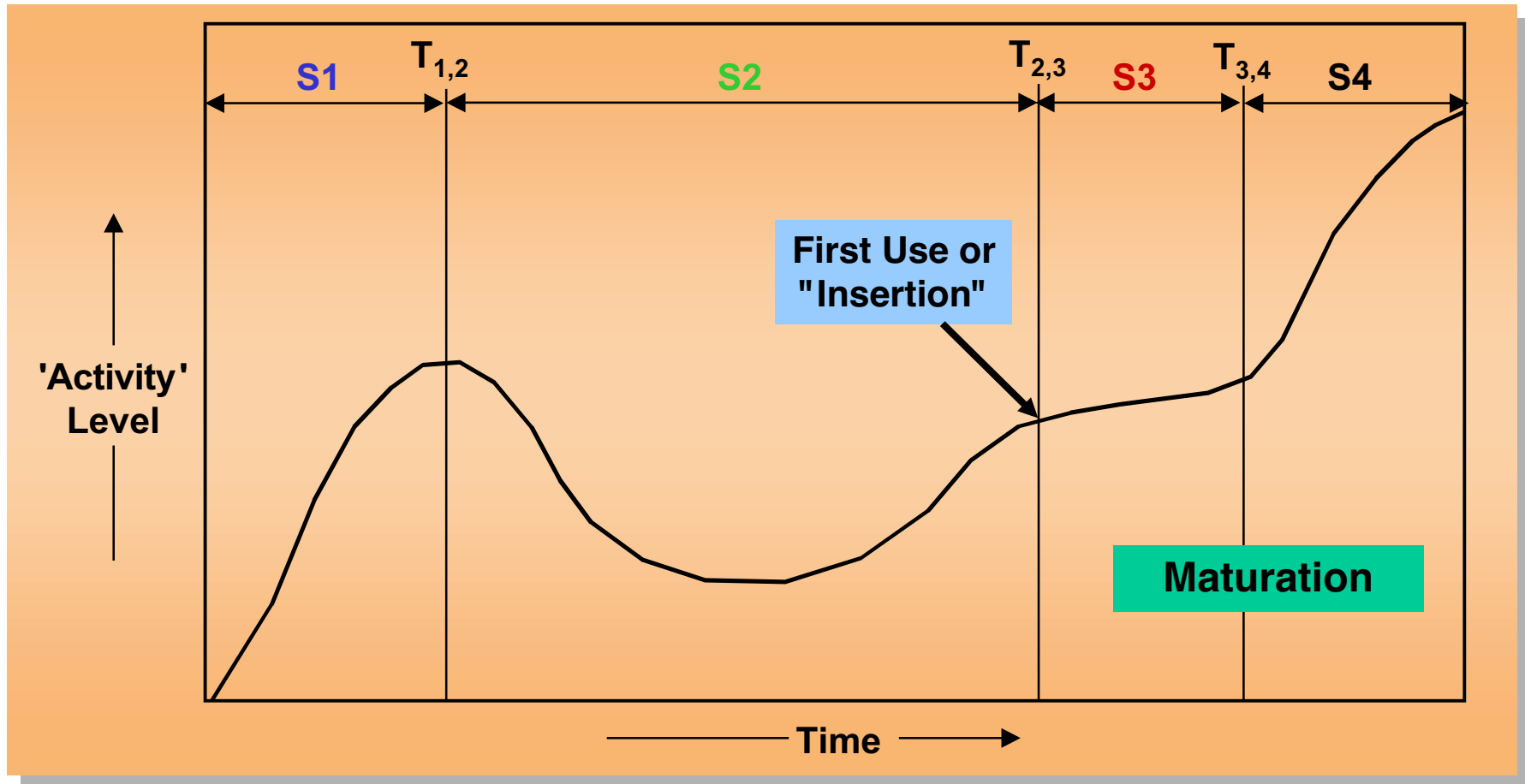
Form Approved
OMB No. 0704-0188

Public reporting burden for the collection of information is estimated to average 1 hour per response, including the time for reviewing instructions, searching existing data sources, gathering and maintaining the data needed, and completing and reviewing the collection of information. Send comments regarding this burden estimate or any other aspect of this collection of information, including suggestions for reducing this burden, to Washington Headquarters Services, Directorate for Information Operations and Reports, 1215 Jefferson Davis Highway, Suite 1204, Arlington VA 22202-4302. Respondents should be aware that notwithstanding any other provision of law, no person shall be subject to a penalty for failing to comply with a collection of information if it does not display a currently valid OMB control number.

1. REPORT DATE JAN 2004		2. REPORT TYPE N/A		3. DATES COVERED -	
4. TITLE AND SUBTITLE Shortening the Insertion Time for Materials Technologies the 21st Century Metals Challenge				5a. CONTRACT NUMBER	
				5b. GRANT NUMBER	
				5c. PROGRAM ELEMENT NUMBER	
6. AUTHOR(S)				5d. PROJECT NUMBER	
				5e. TASK NUMBER	
				5f. WORK UNIT NUMBER	
7. PERFORMING ORGANIZATION NAME(S) AND ADDRESS(ES) Materials and Manufacturing Directorate Air Force Research Laboratory				8. PERFORMING ORGANIZATION REPORT NUMBER	
9. SPONSORING/MONITORING AGENCY NAME(S) AND ADDRESS(ES)				10. SPONSOR/MONITOR'S ACRONYM(S)	
				11. SPONSOR/MONITOR'S REPORT NUMBER(S)	
12. DISTRIBUTION/AVAILABILITY STATEMENT Approved for public release, distribution unlimited					
13. SUPPLEMENTARY NOTES The original document contains color images.					
14. ABSTRACT					
15. SUBJECT TERMS					
16. SECURITY CLASSIFICATION OF:			17. LIMITATION OF ABSTRACT	18. NUMBER OF PAGES	19a. NAME OF RESPONSIBLE PERSON
a. REPORT unclassified	b. ABSTRACT unclassified	c. THIS PAGE unclassified			



Observation: Historical Aerospace Material Life Cycle



Stages

S1 = Revolutionary

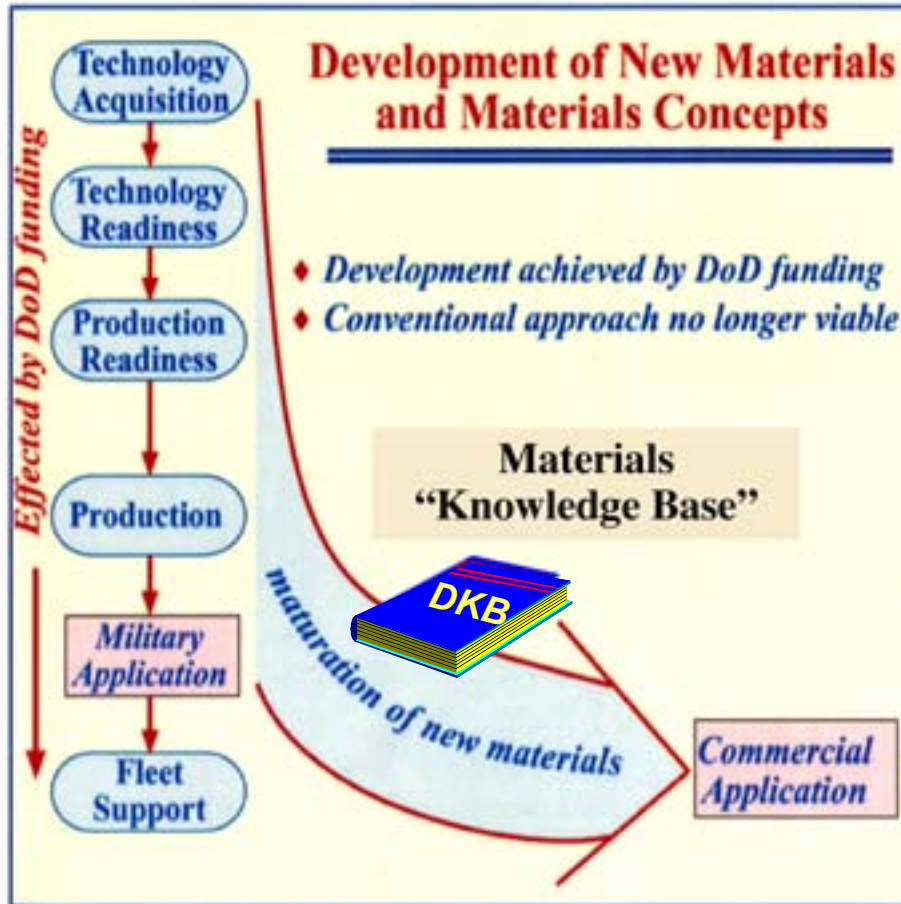
S2 = Emerging

S3 = Specialty Material

S4 = Commodity Material



Aerospace Structural Materials Development: How It Happened



Adapted from Fraser, 1998; Wax, 1999



- DoD materials **transition opportunities** (systems) have drastically **reduced**
- Material development time far exceeds the **modern short product cycle**
 - iterative, empirical development of “Knowledge Base” is lengthy, data intensive, and expensive

21st Century Reality Demands that the Paradigm Change!

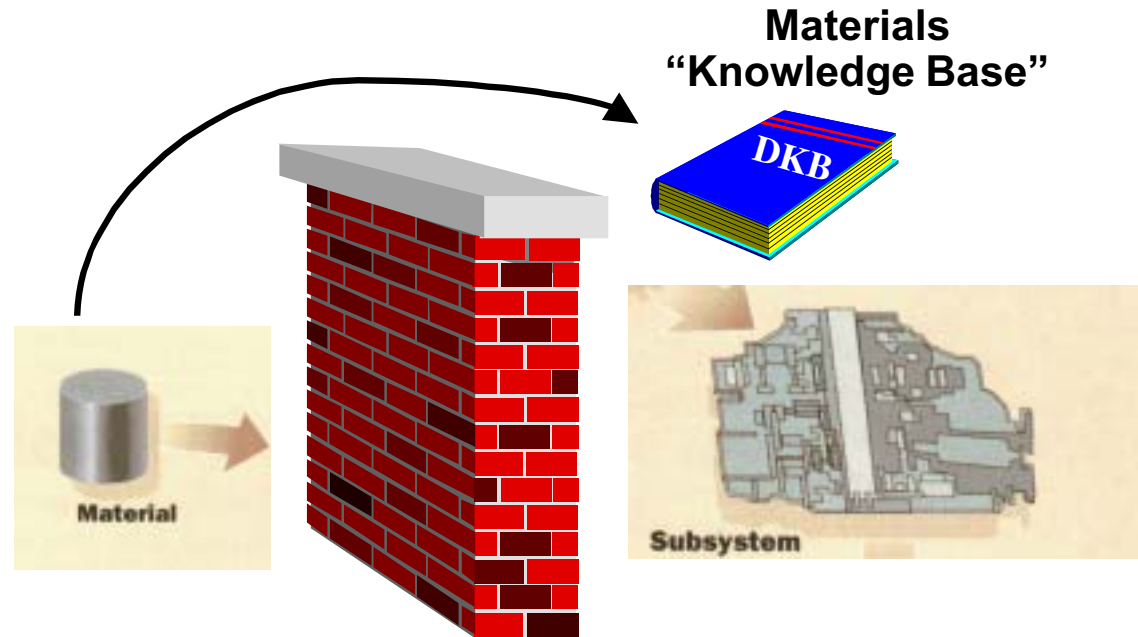


The Disconnect!



Major disconnect between materials development & components/systems engineering design

- Known alloy to reliable part **~36 months**
- Steels for navy landing gear **15+ yrs**
- Lightweight composites for army vehicles **15+ yrs**
- Gamma titanium aluminides **~30yrs and counting**
- Ceramics for engines - **30+++ ? yrs**
- Evolutionary alloy changes (ship steels, superalloys, etc) **~7-10 years**



Materials Development

- Highly Empirical
- Testing Independent of Use
- Existing Models Unlinked

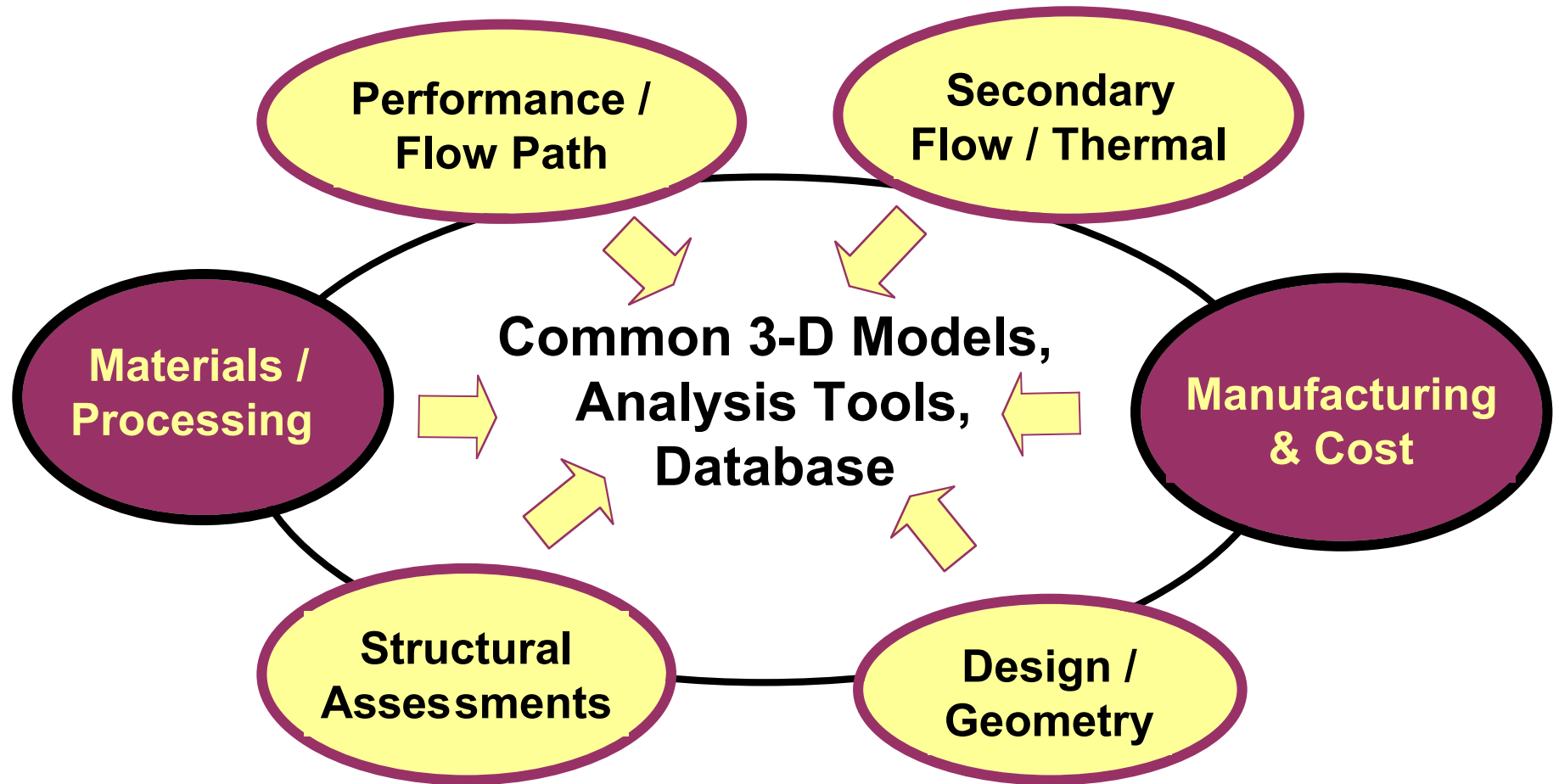
Engineering Design

- Materials Input from "Knowledge Base" of Data (Data Sheets, Graphs, Heuristics, Experience, etc.)
- System/Sub-System Design is Heavily Computational and Rapid
- Well Established Testing Protocols





Integrating Materials & Processes with Engine Design

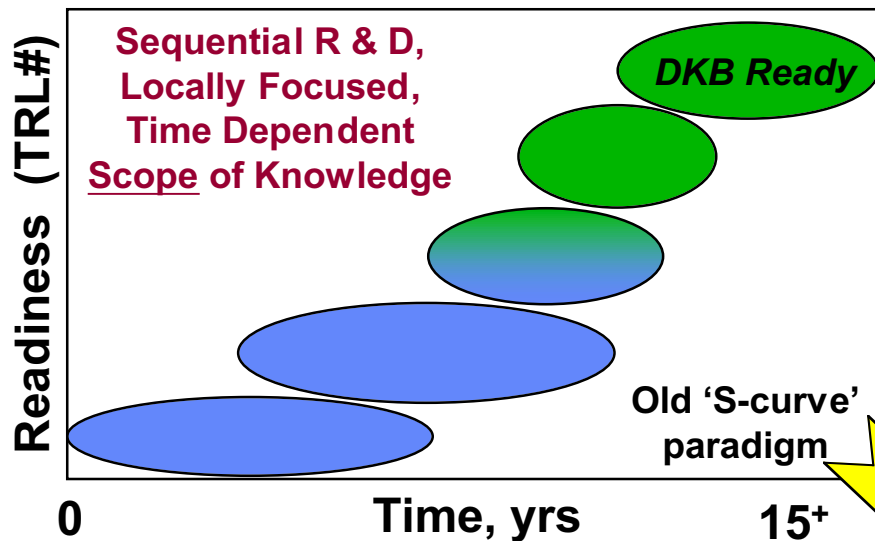


Design "development cycle": <3 yrs

Materials & Process "cycle": 7-20 yrs

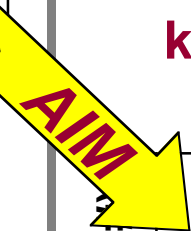
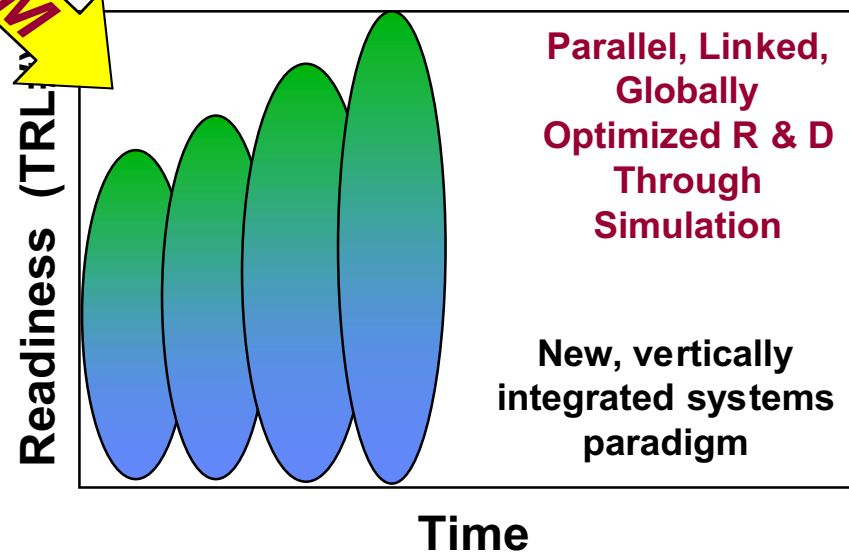


AIM Paradigm for Materials R & D



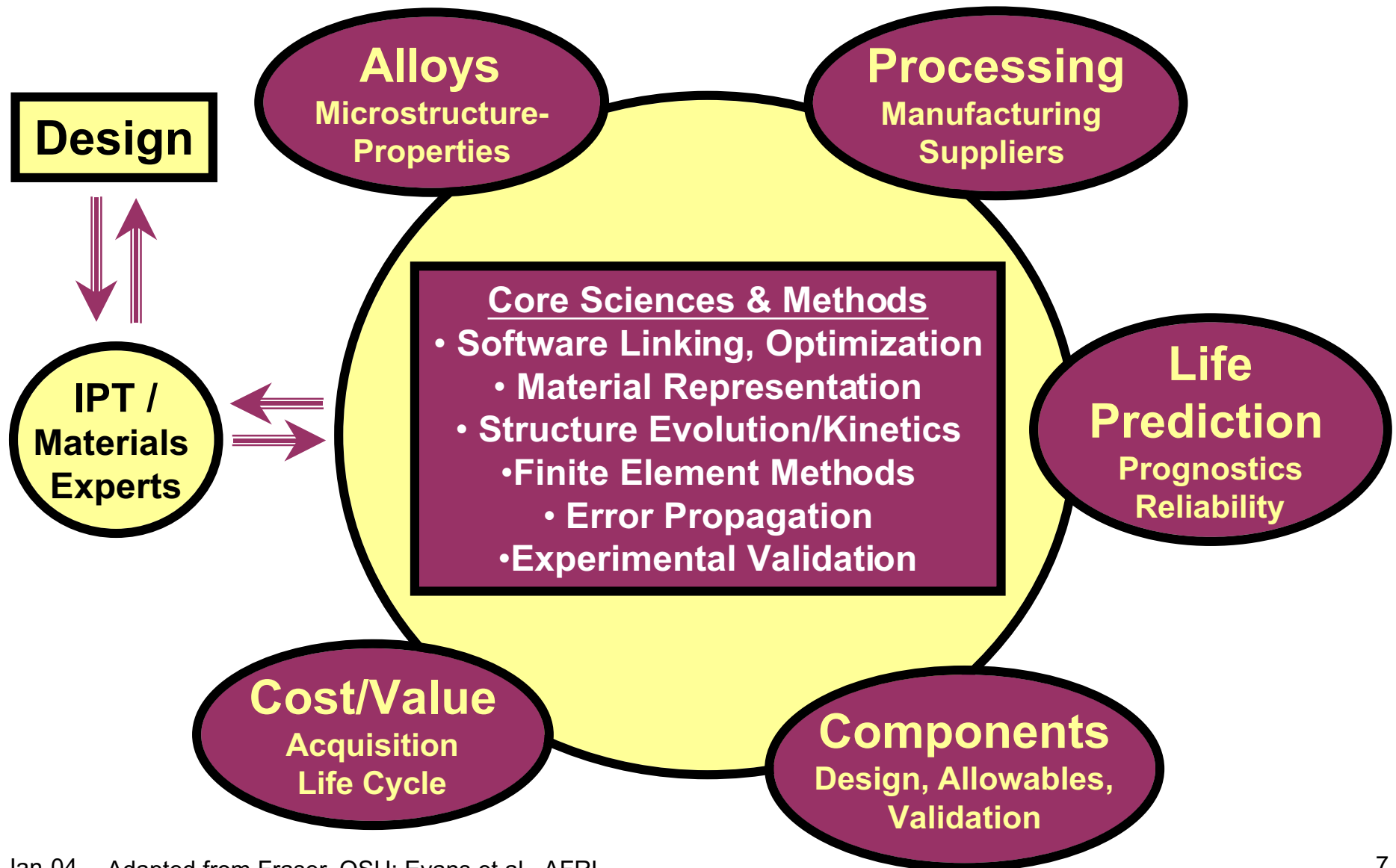
- Sequential M & P
- Optimized from heuristics
- “Designer Knowledge Base”
NOT Ready Until Final Stages

- Building “Designer Knowledge Base” begins at outset
- Optimization based on design IPT need
- Time & effort refines quality of knowledge base, not its scope





Major Components of Designer Knowledge Base





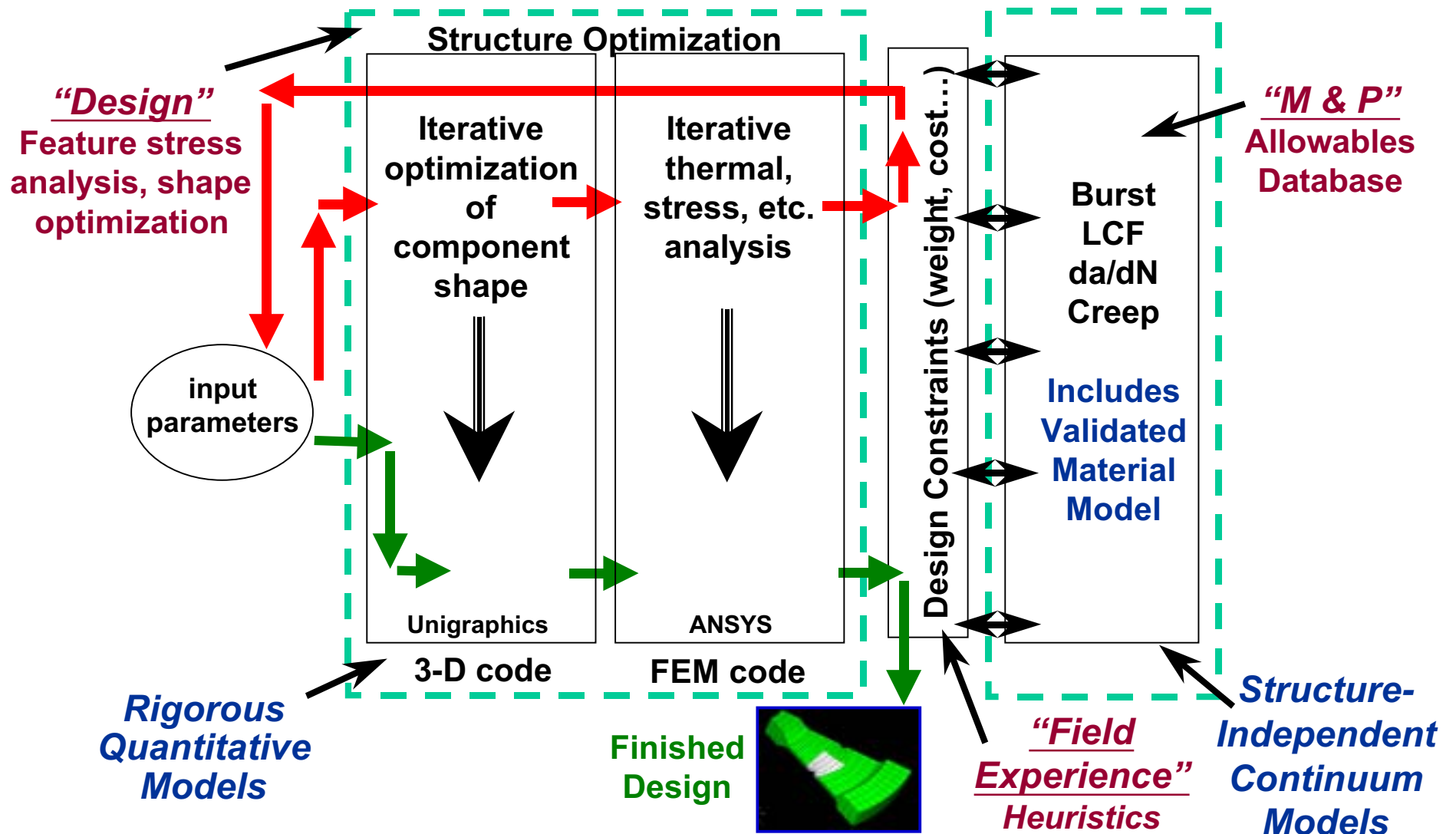
Guiding Constraints



- A key deliverable must be a validated representation of the material and process: ***designers work with representations!***
- Structural materials design demands confidence in ***control of time-dependent properties***, thus representations needed for
 - LCF, HCF, crack growth
 - creep, stress rupture
 - environmental degradation, stress corrosion
 - friction, wear, and fretting
- 'New material' demands ***rapid, validated representations***—but how?
- Need ***ubiquitous tools*** for optimization:
 - a representation framework***
 - efficient validation***

'Accelerated Insertion' Rather Than 'Materials by Design'

Modeling in the Component Design Process



“Field Experience” corrects for i) microstructure variation, ii) inaccurate analysis, & iii) incomplete understanding of service environment

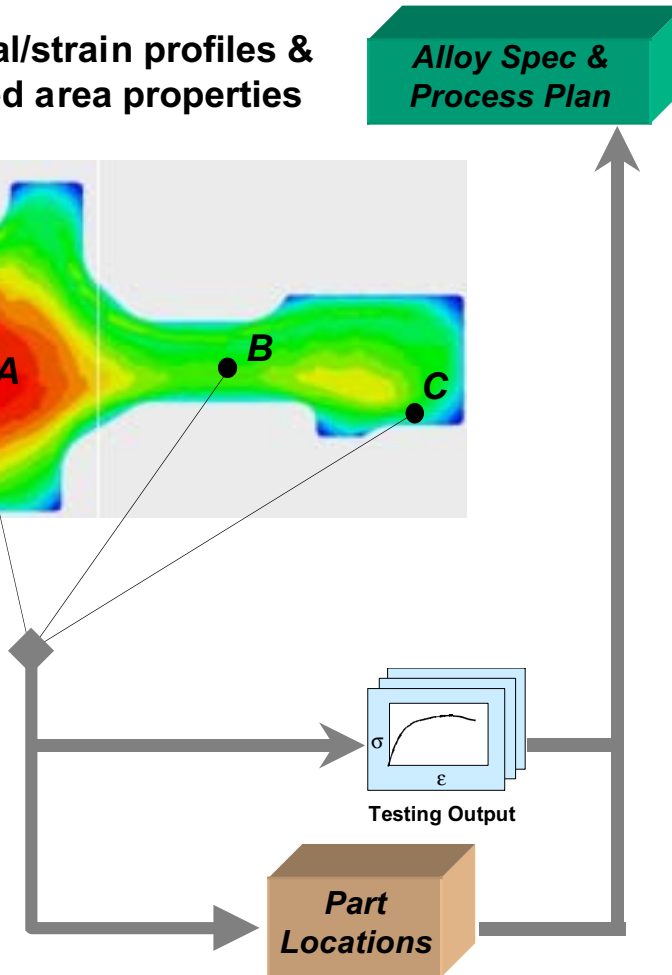
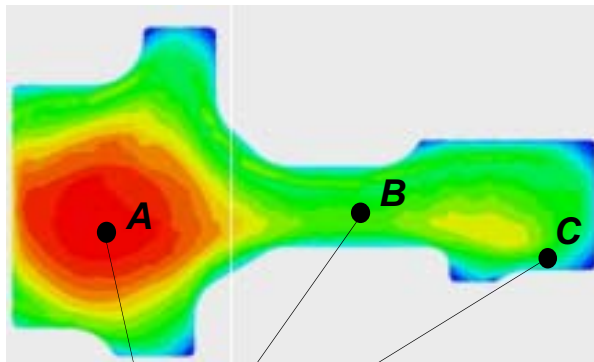


The Case of Ni-Alloy Engine Disks



Thermal/strain profiles & selected area properties

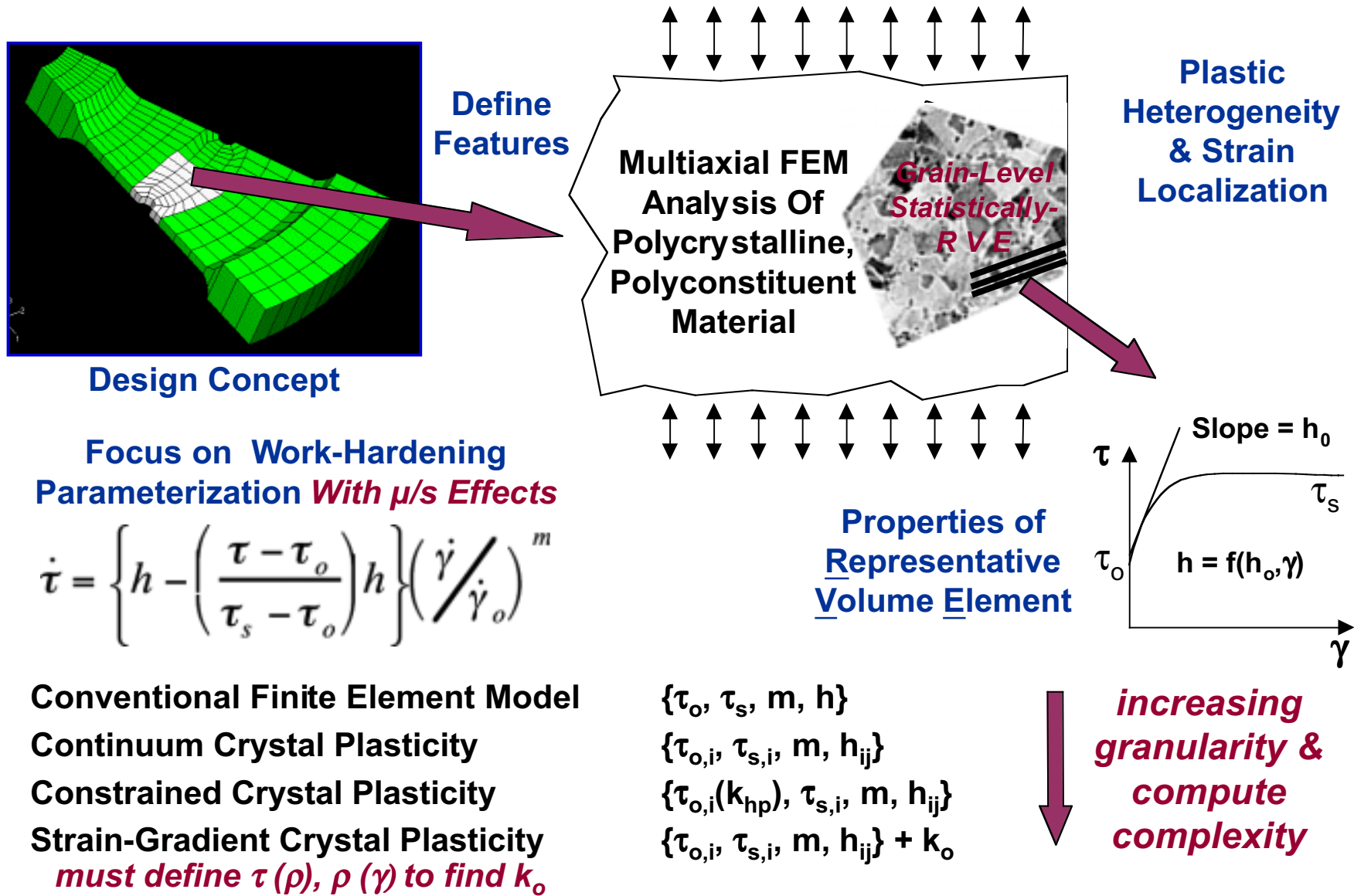
Alloy Spec & Process Plan



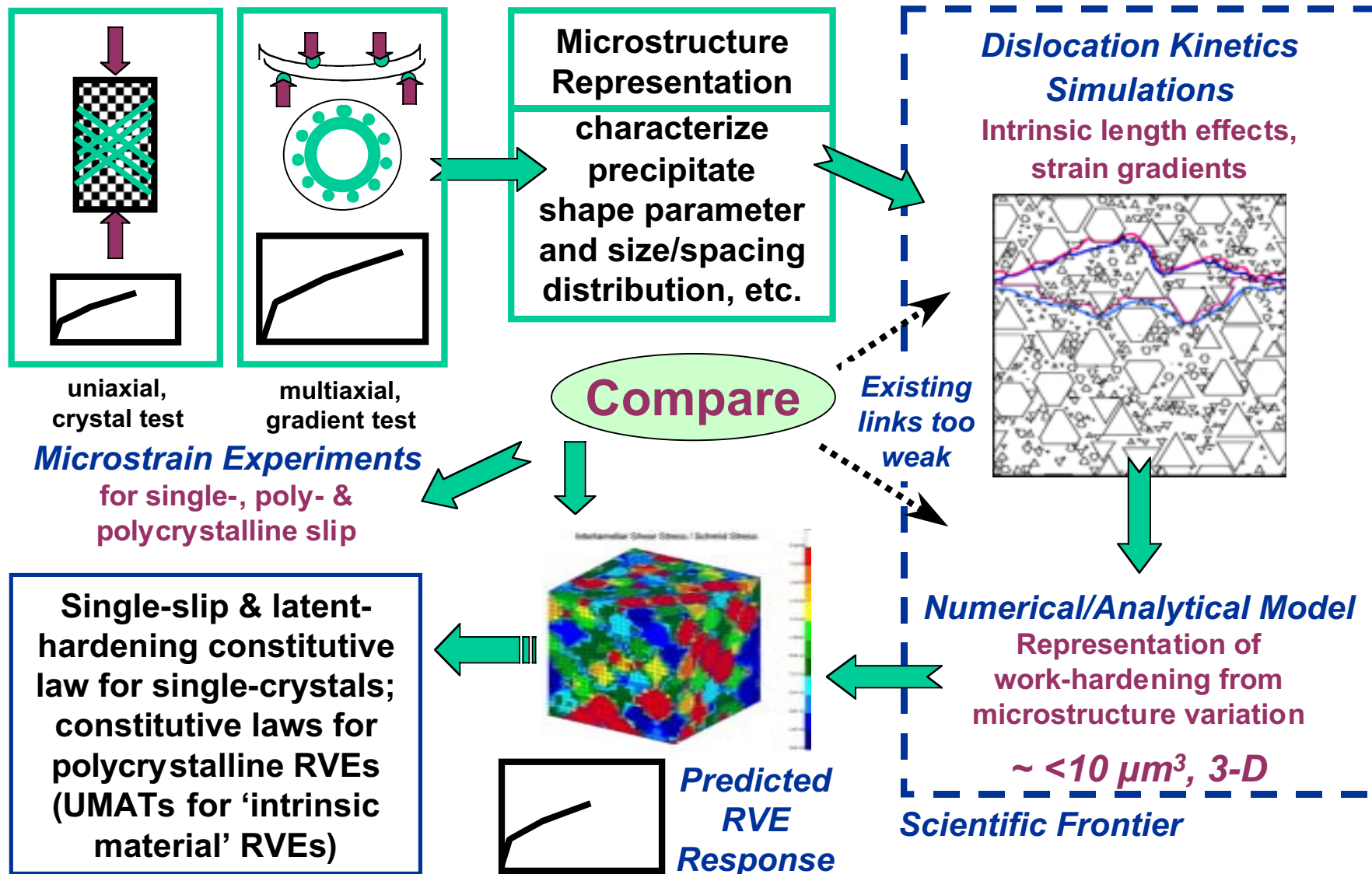
- Continuum codes (i.e., DEFORM) for thermal history and microstructure correlation over disk cross-section
- Cross-section may be "zoned" into a few regions (dual heat treat); *centimeter-scale homogenization*
- *Empirical* yield-strength models, & flow-curve 'templates,' used to assign constitutive response
- Variation of structure averaged out; *local microstructure - defect interactions not represented*
- *Data-intensive* and time-costly process for yield model and 'constitutive template' validation

Challenges to represent time-dependent failure; to introduce "new material"

The “Plasticity Engine” for Properties



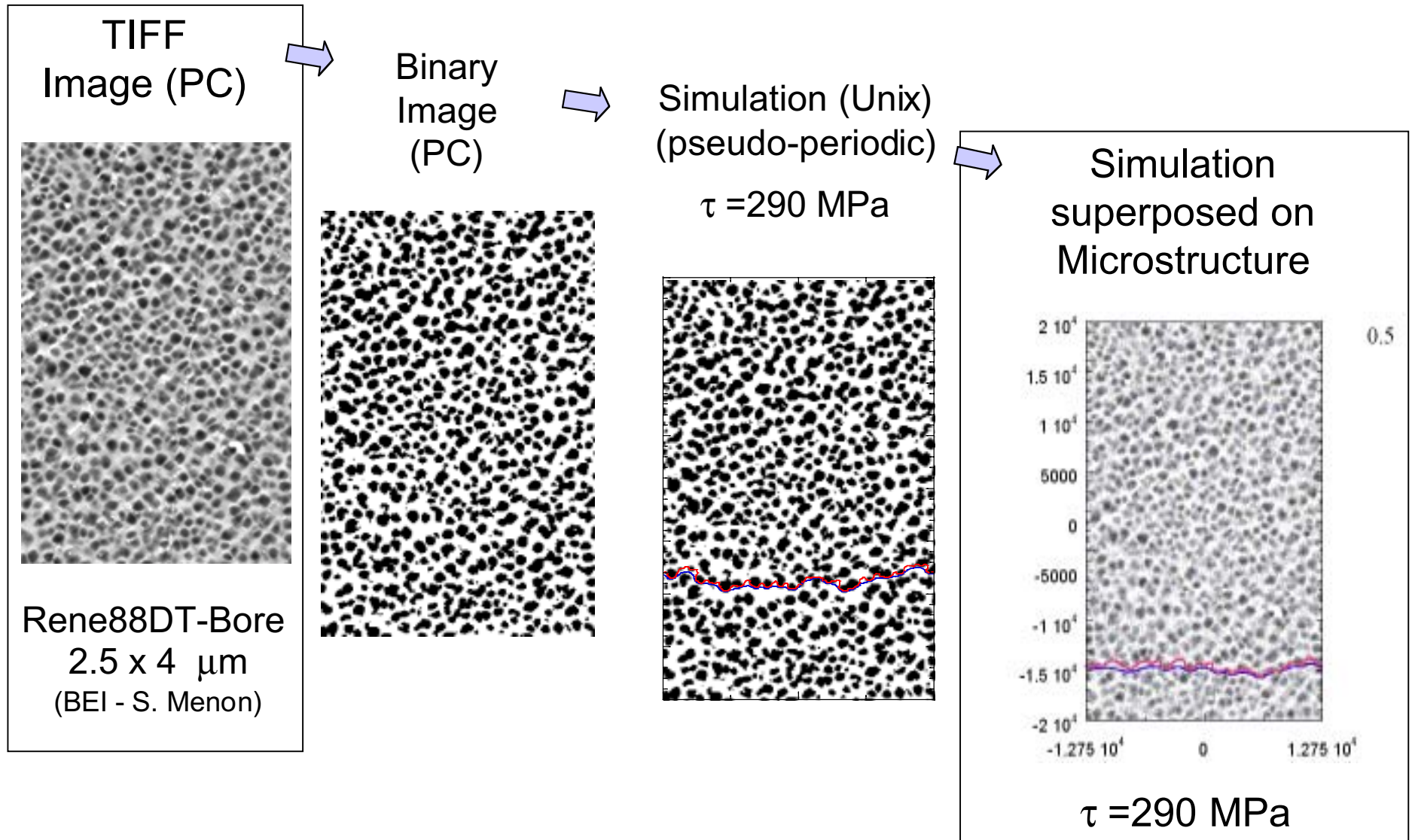
Build from Uni- / Multiaxial Slip & Work Hardening



Direct links: computationally challenging & underdeveloped



Real Microstructure in Simulations

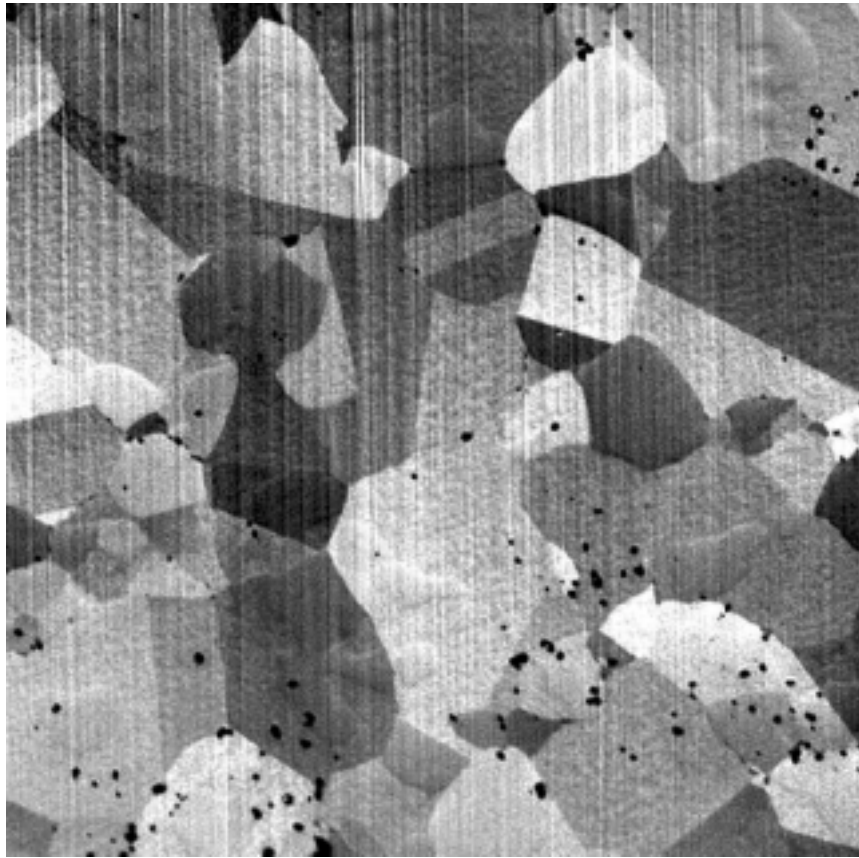




3-D Quantitative Microscopy

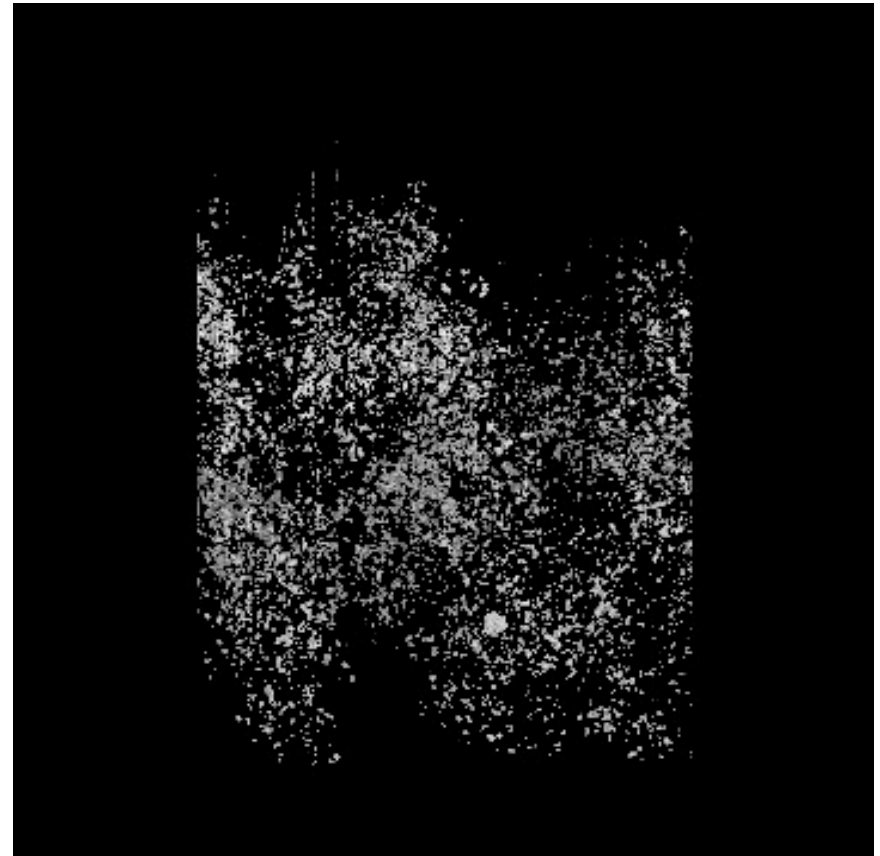


Serial Sectioning & Imaging



5 μm

3-D Rendering of Structure



IN-100 Ni-base Superalloy
Grain Structure and Carbide/Boride Distribution

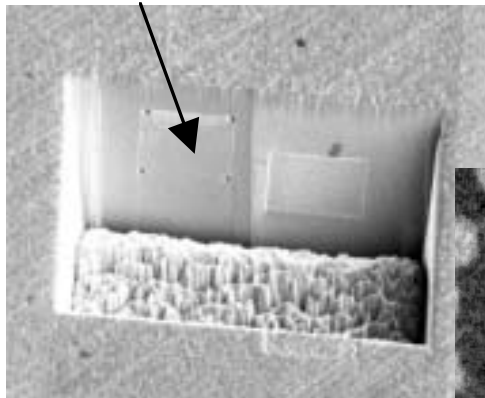


3-D Quantitative Microscopy

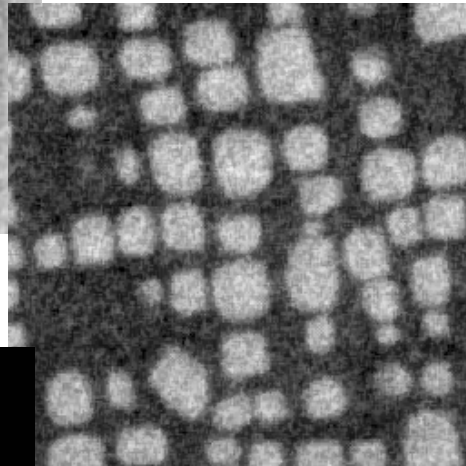


Serial Sectioning & Imaging

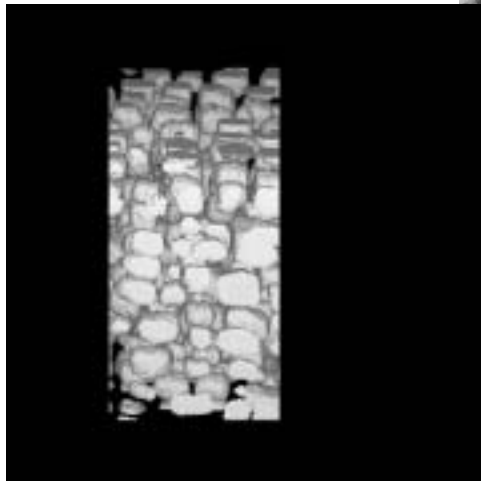
14 x 14 μm Image Area



Ni-Cr-Al Superalloy



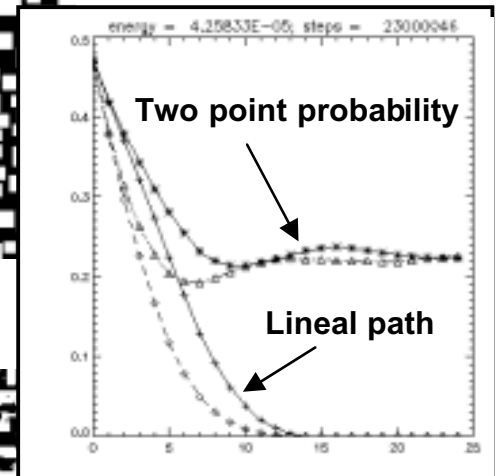
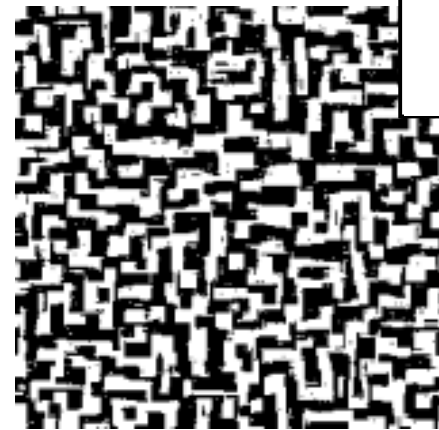
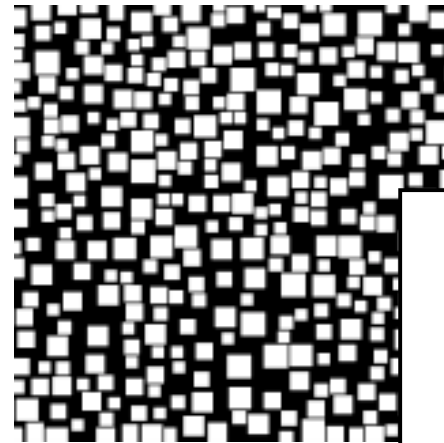
Aligned stack
(~20 nm spacing)



Rendered 3-D volume
(~3 μm thick)

Mathematical Representation

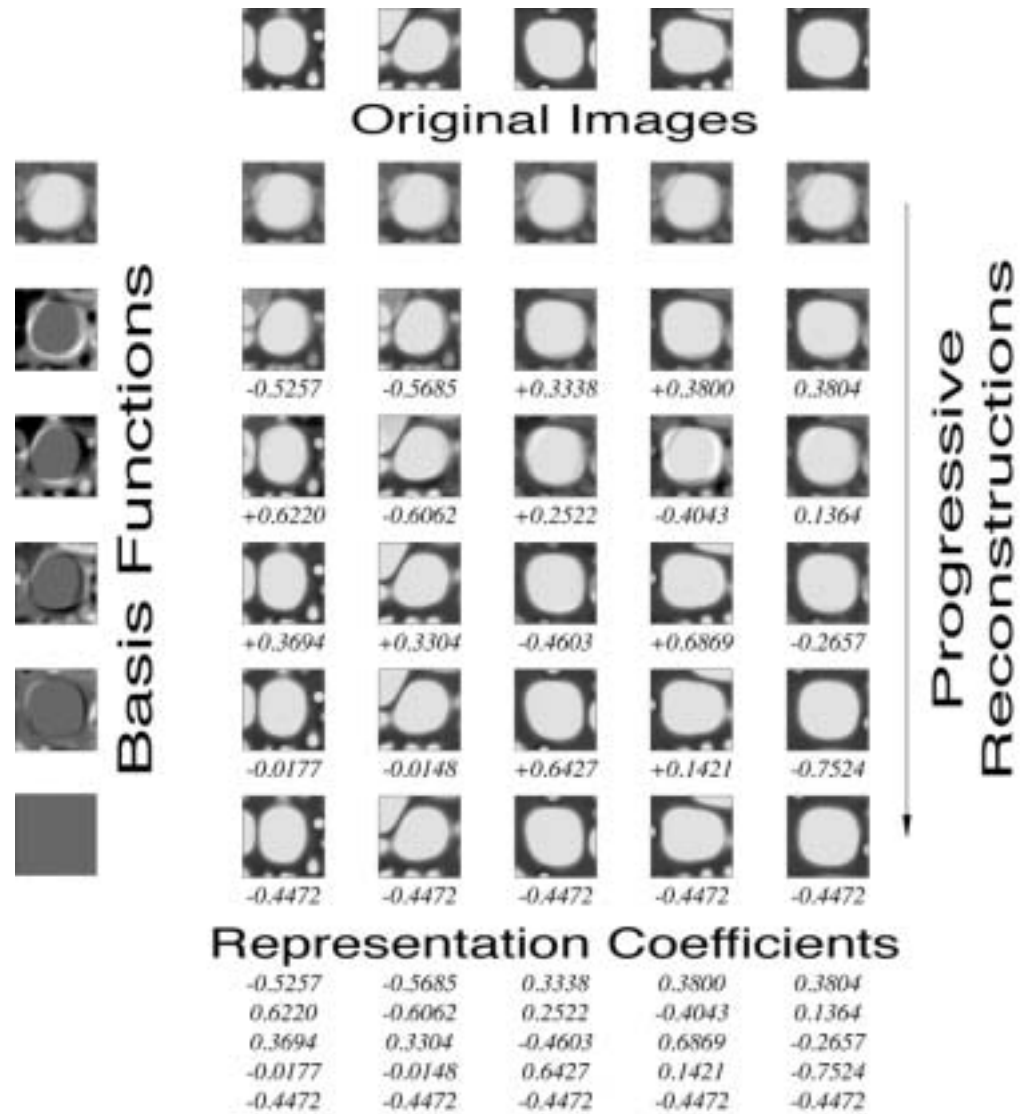
Idealized Microstructure



Monte Carlo
Reconstructed
Representative
Microstructure



Principal Component Analysis of Microstructure

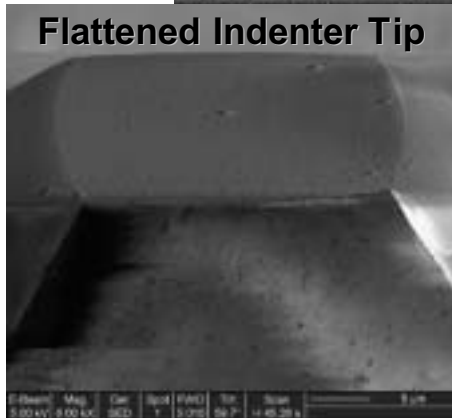
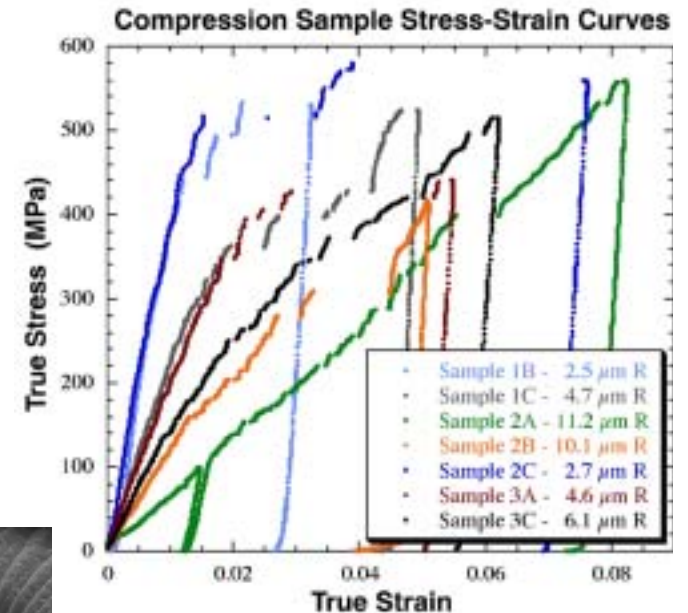
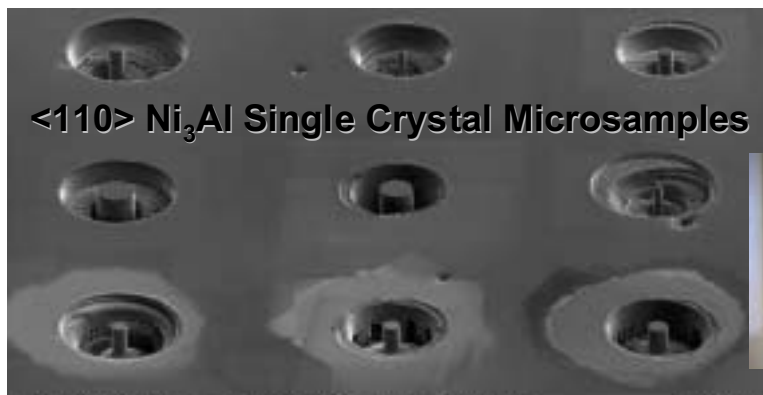




Mechanical Testing of Ultra-Small Samples for Crystal Properties



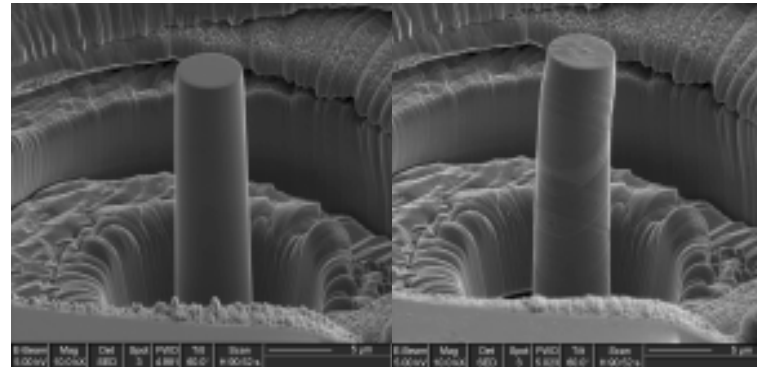
- Focus efforts on linking simulation to design
- Small-scale properties measurement for constitutive representations
- Theory for broad understanding of deformation at small scales



FWD	Tilt	Scan	100 μm
4.004	59.0°	H 90.62 s	

Prior to Test

Post Test

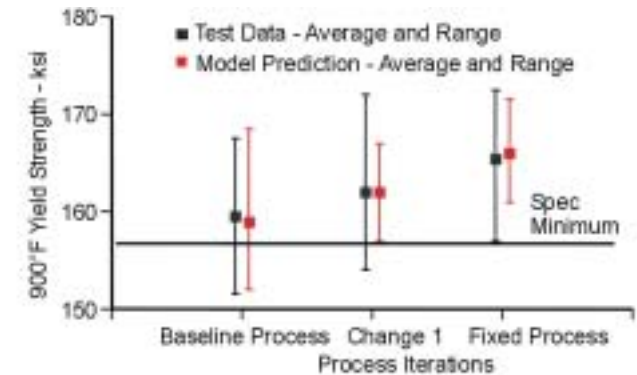
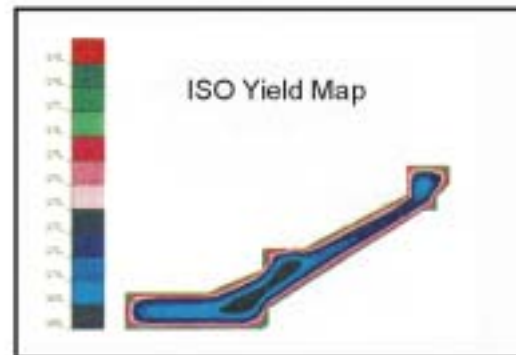
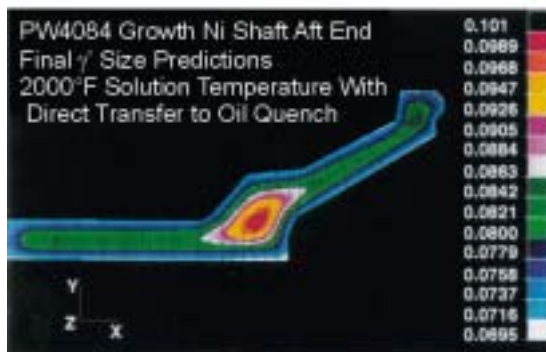




Even Simple Models Have a Big Impact



- Integrated structure-property-process models successfully applied as point solutions
 - statistically fit data to mechanistic-based property model
 - focused experiments to model microstructural evolution
 - accurate estimate of *mean* behavior



112095.cdr

P & W →

Shaft design:

- 1/4 development time
- 80% reduction in cost

Experience shows concept is sound, projected payoffs reasonable



Eventually Must Address Full Breadth of Component Requirements

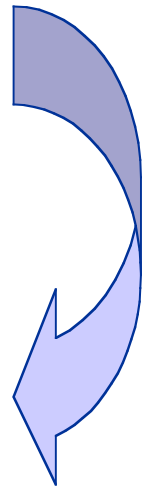


Requirements for Turbine Engine Disks:

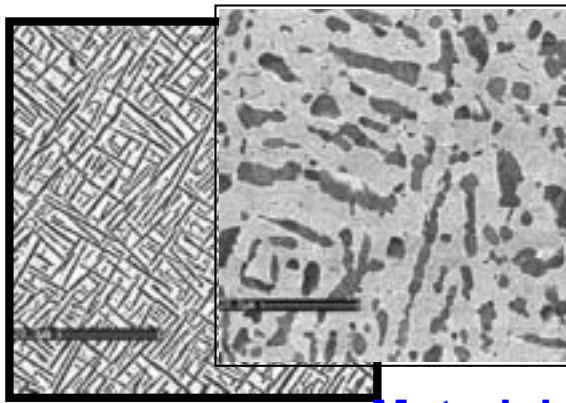
- **Ultimate Tensile Strength**
- **0.2 % Yield Strength**
- **Tensile Ductilities**
- **Notch Strength**
- **Burst Margin** DARPA - AIM
- **Creep**
- **Rupture**
- **Rupture Ductilities**
- **Continuous Cycling LCF**
- **Hold Time LCF**
- **Continuous Cycling Crack Growth**
- **Hold Time Crack Growth**
- **Superplasticity**
- **Flow Stresses**
- **Abnormal Grain Growth Resistance**
- **Gamma Prime Solvus**
- **Carbide(s) Solvus**
- **Density**



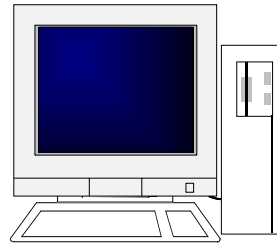
- **TIP**
 - **Structural Stability**
 - **Exposed Behavior**
 - **Defect Sensitivity**
 - **Defect Content**
 - **Grain Size**
 - **Gamma Prime Size**
 - **Segregation /Effects**
 - **Inspectibility**
 - **Quench Crack Resistance**
 - **Multi-source Capability**
 - **Low Costs--Elemental and Processing**
 - **Weldability**
 - **Machinability**
 - **Machined Surface Behavior**
 - **Residual Stresses**
 - **Cost Reduction Potential**
 - **Size/Volume Scaling Effects**
- The Issues That Often Determine Success or Failure*



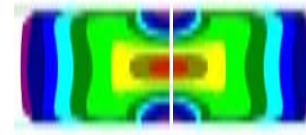
Materials & System Readiness



Materials



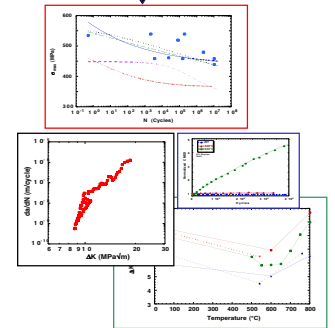
Mathematics



Experiment



Experience



Property Database

Mathematics

State Awareness

Failure Physics

Data Fusion

Reasoning System



Combat System Readiness



Prognostics



Summary



- The ***time*** for structural materials development and use must be shortened (time focus, not cost focus)
- Industrial M & P community demanding a quantum-leap in ***relevant engineering simulation*** capability
- ***Accelerated Insertion of Materials*** is the long-term, strategically-relevant, computational materials science & engineering vision
- Materials Science & Engineering community must produce ***integrated predictive tools***
- Accelerated insertion demands ***integration of engineering design with M & P*** to achieve true systems engineering of materials technologies