

INTEGRATING SEDIMENT CLEAN UP AND WATERSHED MANAGEMENT FOR SINCLAIR AND DYES INLETS, WA USA

D.E. Leisle and G.M. Sherrell (Puget Sound Naval Shipyard & Intermediate Maintenance Facility, Bremerton, WA)

R.K. Johnston and P.F. Wang (Space and Naval Warfare Systems Center, San Diego, CA)

D. Ginn (Naval Facilities Engineering Command, Poulsbo, WA)

C. Berthiaume (City of Bremerton, Bremerton, WA)

E. Crecelius, J. Brandenberger, and N. Kohn (Battelle, Marine Sciences Laboratory, Sequim, WA)

P. McLaren (Geosea Consulting Ltd., Brentwood Bay, BC, Canada)

B.E. Skahill (Engineering Research and Development Center, Vicksburg, MS)

Author to whom correspondence may be addressed: johnston@spawar.navy.mil

INTEGRATING SEDIMENT CLEAN UP AND WATERSHED MANAGEMENT FOR SINCLAIR AND DYES INLETS, WA USA

ABSTRACT

Integrating contaminated sediment clean up and restoration issues within the larger perspective of watershed management are especially critical in populated coastal and estuarine areas with multiple sources of stress from urbanization and development as well as sediment contaminated from historical sources. Sinclair and Dyes Inlets, located in the Puget Sound WA, have received historical inputs of contamination from military installations, industrial activities, municipal outfalls, and other nonpoint sources. As part of the record of decision to remediate contaminated sediments near the Puget Sound Naval Shipyard in Sinclair Inlet, sediments were dredged from contaminated areas, placed in an adjacent confined aquatic disposal pit, and covered with clean material dredged to deepen the navigational channel and turning basin. Other cleanup activities included restoring shoreline areas to minimize contaminated soil infiltration and improve shoreline habitat, and conducting a comprehensive cleaning, inspection, and repair of the Shipyard's storm water system. Concurrently, the City of Bremerton, also located in the Inlets, has made significant improvements to its combined sewer and storm water system nearly eliminating combined sewer overflows and achieving a marked improvement in the water quality of the Inlets. Historical trends of contamination in the Inlets obtained from age-dated sediment cores show contamination levels peaking between 1940 and 1960 followed by an obvious decrease in contaminant loads in the most recent deposits. During the interval between 1997-8 and 2003 (following clean up activities) the sediments in Sinclair Inlet and Dyes Inlet changed significantly in texture by becoming, on average, nearly a full phi size coarser (from medium to coarse silt). Currently, models are being developed to simulate contaminant runoff and loading from the watershed and the fate and transport of contaminants in Sinclair and Dyes Inlets to calculate Total Maximum Daily Loads and establish the technical and scientific basis to better protect and improve the health of the watershed.

Report Documentation Page

Form Approved
OMB No. 0704-0188

Public reporting burden for the collection of information is estimated to average 1 hour per response, including the time for reviewing instructions, searching existing data sources, gathering and maintaining the data needed, and completing and reviewing the collection of information. Send comments regarding this burden estimate or any other aspect of this collection of information, including suggestions for reducing this burden, to Washington Headquarters Services, Directorate for Information Operations and Reports, 1215 Jefferson Davis Highway, Suite 1204, Arlington VA 22202-4302. Respondents should be aware that notwithstanding any other provision of law, no person shall be subject to a penalty for failing to comply with a collection of information if it does not display a currently valid OMB control number.

1. REPORT DATE JAN 2005		2. REPORT TYPE		3. DATES COVERED 00-00-2005 to 00-00-2005	
4. TITLE AND SUBTITLE Integrating Sediment Clean Up and Watershed Management for Sinclair and Dyes Inlets, WA USA				5a. CONTRACT NUMBER	
				5b. GRANT NUMBER	
				5c. PROGRAM ELEMENT NUMBER	
6. AUTHOR(S)				5d. PROJECT NUMBER	
				5e. TASK NUMBER	
				5f. WORK UNIT NUMBER	
7. PERFORMING ORGANIZATION NAME(S) AND ADDRESS(ES) Space and Naval Warfare Systems Center, Code 2375, 4228 Fir Dr NE, San Diego, CA, 98310				8. PERFORMING ORGANIZATION REPORT NUMBER	
9. SPONSORING/MONITORING AGENCY NAME(S) AND ADDRESS(ES)				10. SPONSOR/MONITOR'S ACRONYM(S)	
				11. SPONSOR/MONITOR'S REPORT NUMBER(S)	
12. DISTRIBUTION/AVAILABILITY STATEMENT Approved for public release; distribution unlimited					
13. SUPPLEMENTARY NOTES Third International Conference on Remediation of Contaminated Sediments, January 24-27, 2005. New Orleans, LA					
14. ABSTRACT					
15. SUBJECT TERMS					
16. SECURITY CLASSIFICATION OF:			17. LIMITATION OF ABSTRACT Same as Report (SAR)	18. NUMBER OF PAGES 19	19a. NAME OF RESPONSIBLE PERSON
a. REPORT unclassified	b. ABSTRACT unclassified	c. THIS PAGE unclassified			

INTEGRATING SEDIMENT CLEAN UP AND WATERSHED MANAGEMENT FOR SINCLAIR/DYES INLETS, WA USA

- Introduction
- Background
 - Historical Trends
- Controlling Potential Sources of Sediment Contaminant
 - Cleanup and Dredging
 - CSO Reduction Program
- Watershed Dynamics
- Summary

Puget Sound Naval Shipyard & Intermediate Maintenance Facility Project ENVVEST

Navy:

**Opportunity to propose cleaner, cheaper, and smarter
ways of protecting the environment**

**Opportunity to partner with agencies, engage
stakeholders, and influence implementation**

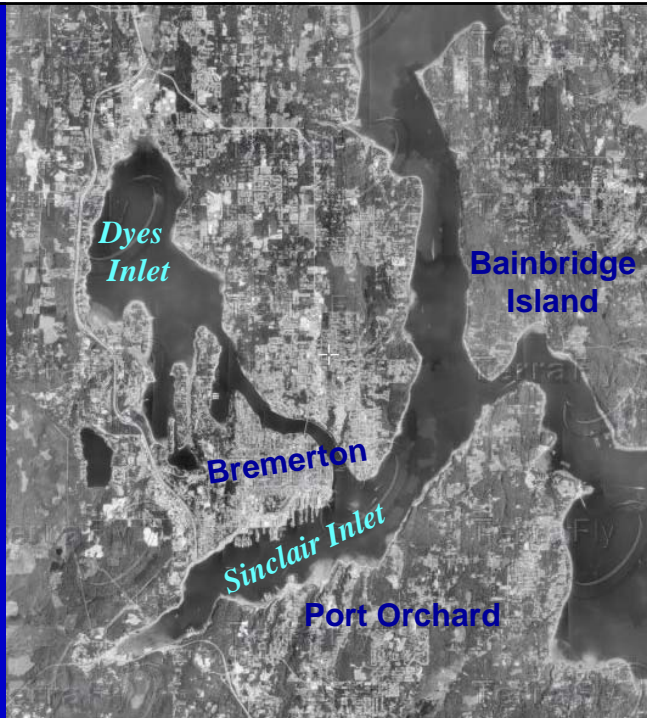
Regulatory Agencies:

More defensible position

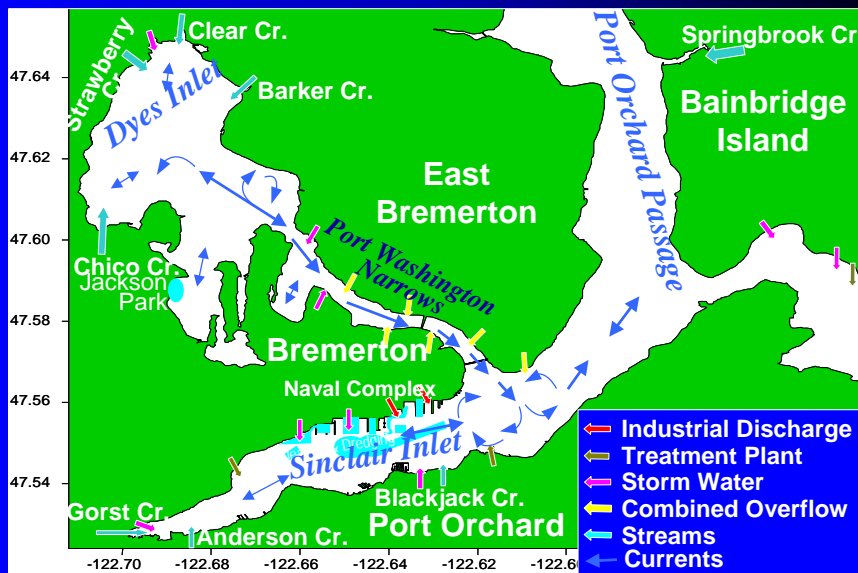
More resources to address problems



Study Area

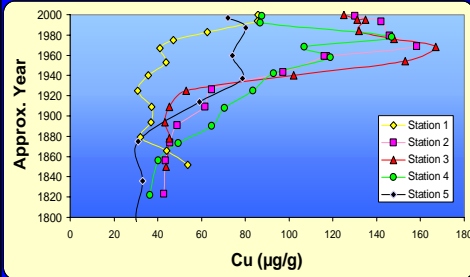


Conceptual Model

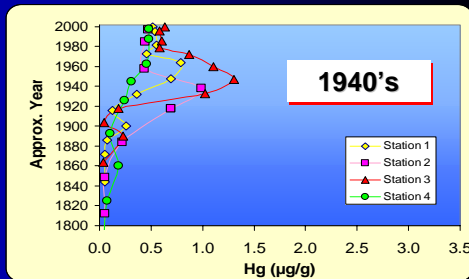
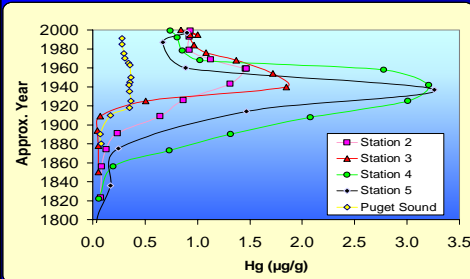
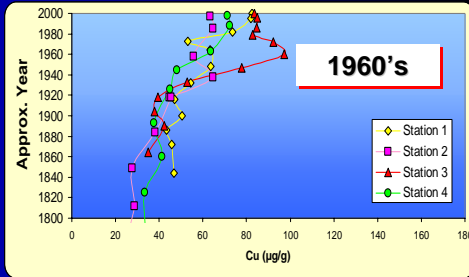


Historical Trends

Sinclair Inlet



Dyes Inlet

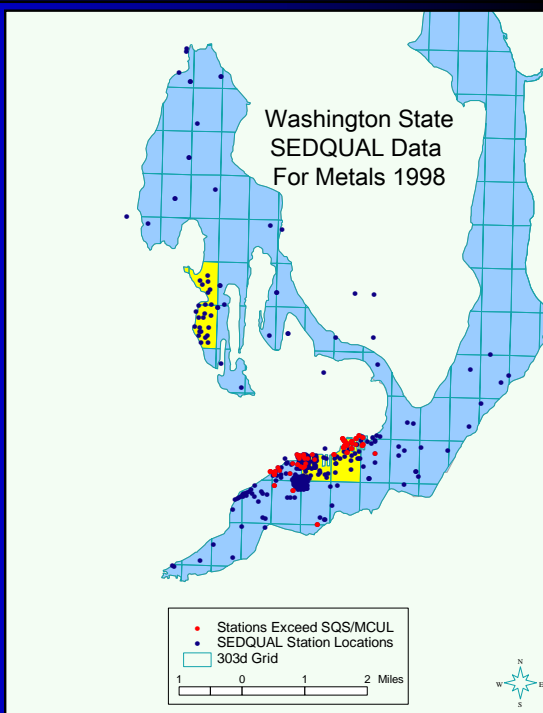


http://www.psat.wa.gov/Publications/03_proceedings/PAPERS/ORAL/6e_crece.pdf

1998 303(d) Listings for Sediment

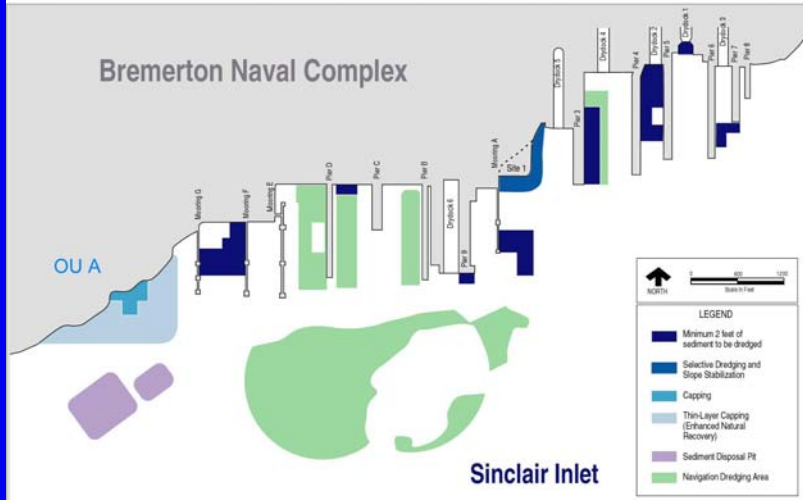
Sinclair Inlet: As, Cu, Pb, Zn, Cd, Hg, PCBs, Phalates, and PAHs

Dyes Inlet: Cd, Ag, Hg, Phenol, Toxicity

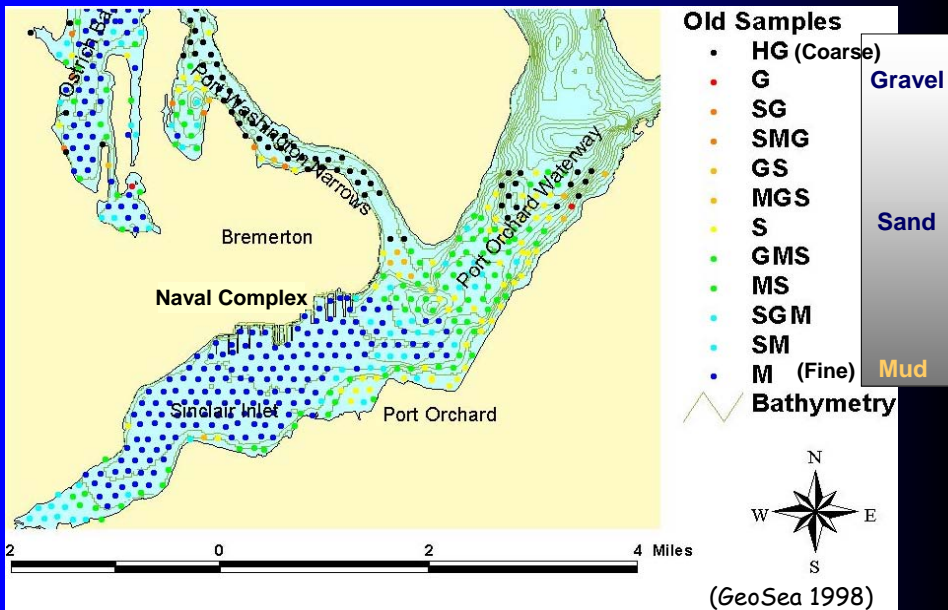


Sediment Remediation

OU B Sediment Cleanup Sediment Cleanup and Navigational Dredging

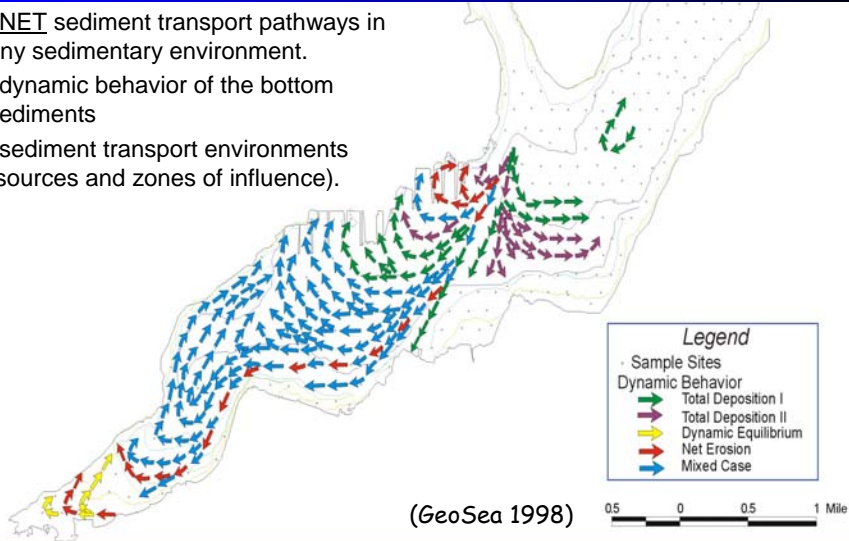


Precleanup Sediment Texture

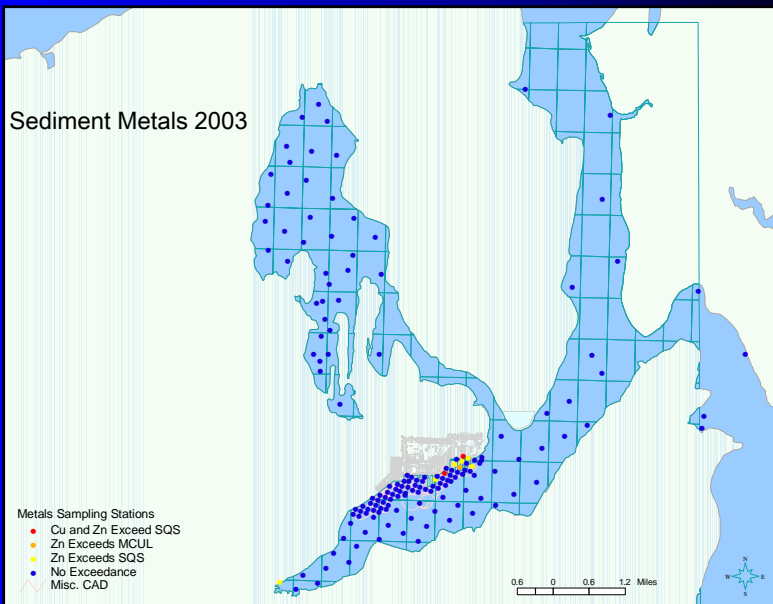


Sediment Trend Analysis for Sinclair Inlet Net Transport for Muds

- The NET sediment transport pathways in any sedimentary environment.
- The dynamic behavior of the bottom sediments
- The sediment transport environments (sources and zones of influence).

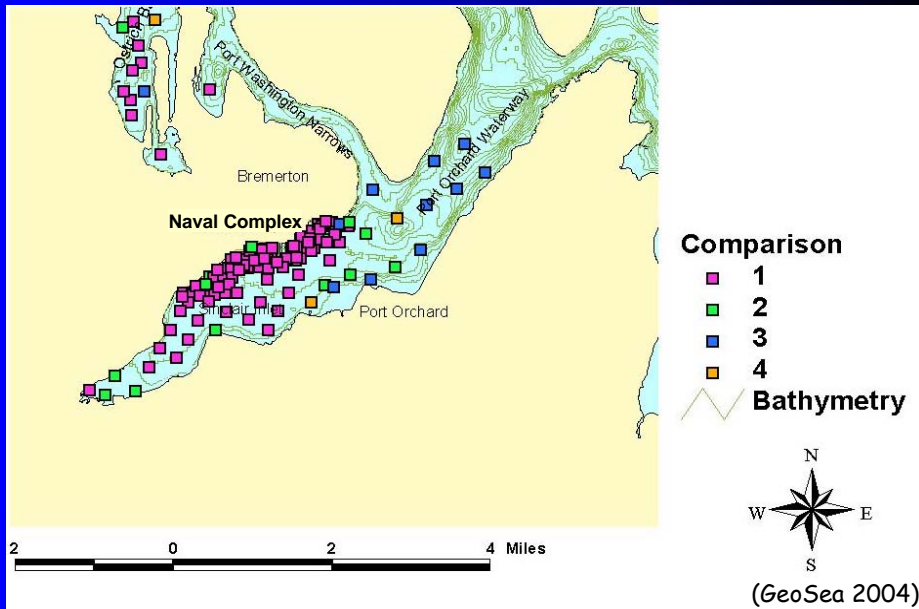


Post Cleanup Sediment Metals

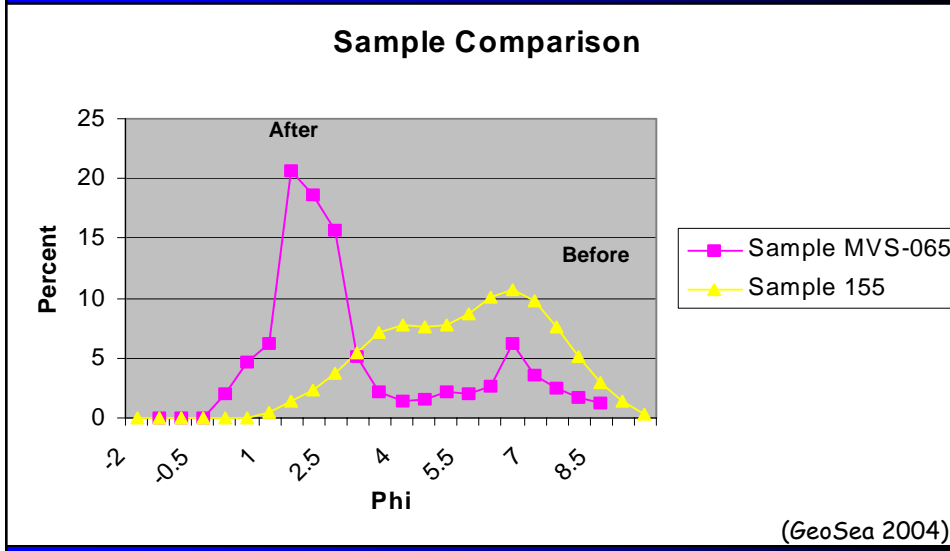


Post Cleanup Sediment Texture

Sediments became coarser



The sediments became coarser
(from medium to coarse silt).

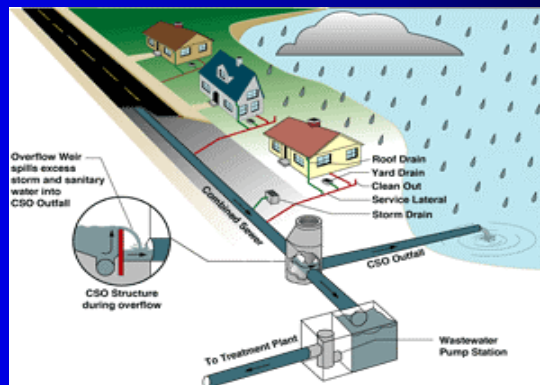


Why Coarser Texture?

- Addition of a coarser sediment to a pre-existing finer sediment.
- Coarser sediments are assumed to be available from the regional glacial deposits bordering the coasts and underlying the bottom sediments.
 - Greater than usual storm activity between samplings.
 - The fast ferry eroding the coasts of Port Orchard.
 - Dredging in Sinclair Inlet introducing underlying coarser sediments into the water column.

(GeoSea 2004)

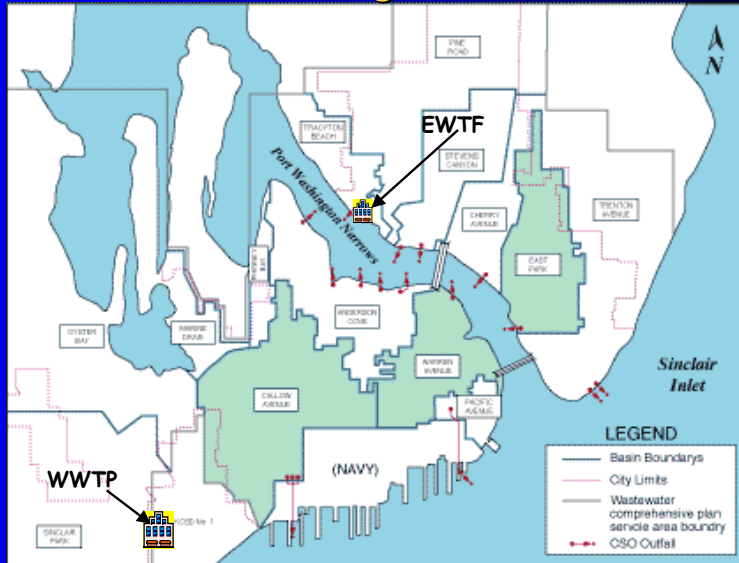
Combined Sewer Overflows



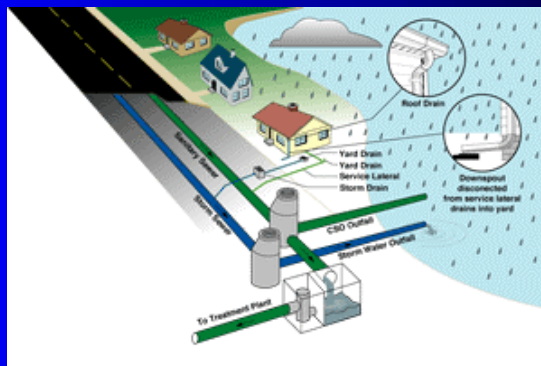
City of Bremerton, 2004. CSO Reduction.

<http://www.cityofbremerton.com/content/csoreduction.html>

City of Bremerton CSO Reduction Program

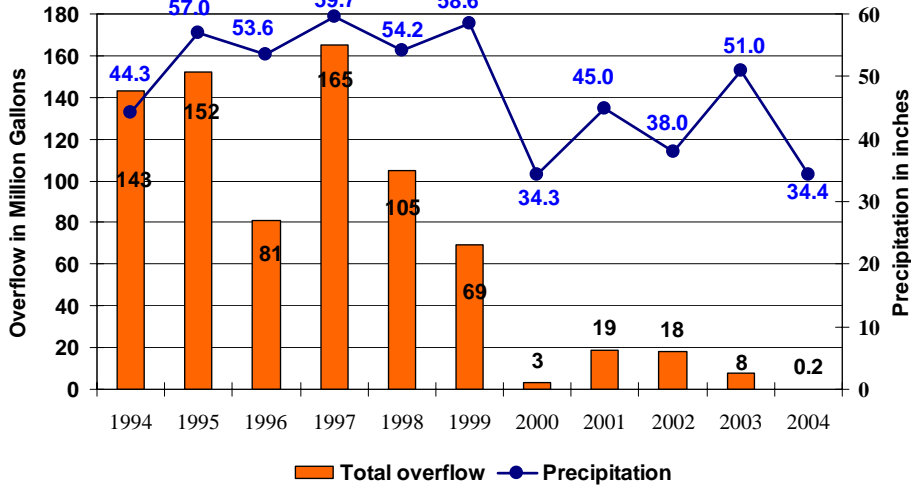


Separation of Sanitary and Storm Water

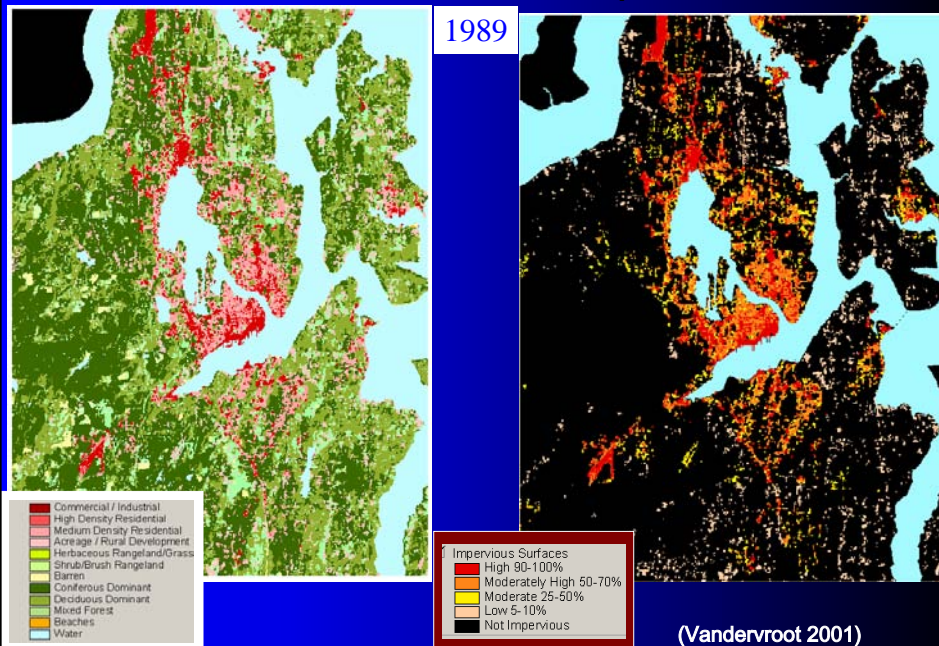


CSO Reduction Program

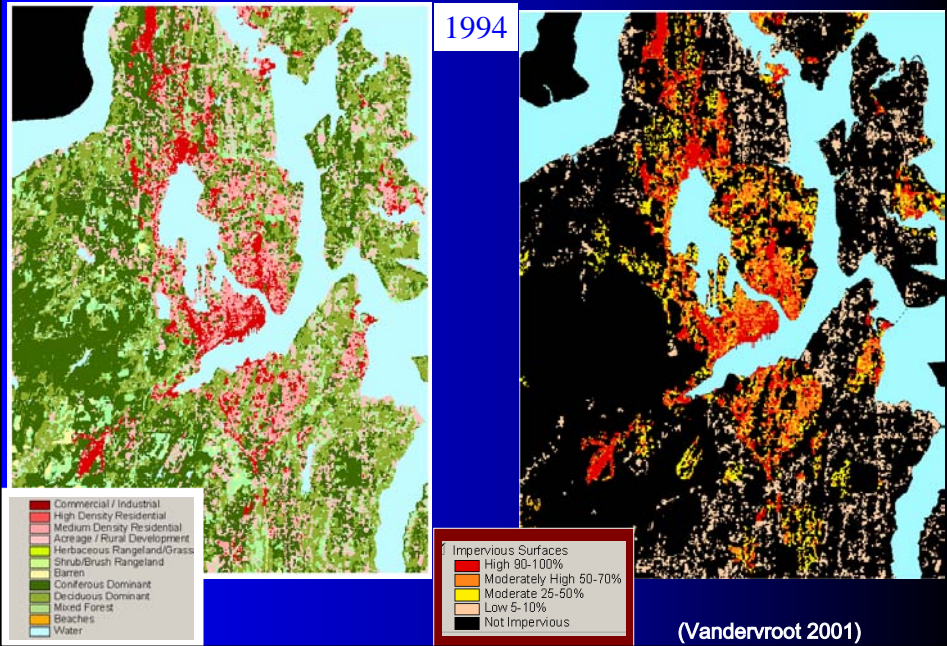
City of Bremerton Department of Public Works & Utilities
CSO Volume & Precipitation 1994-2004



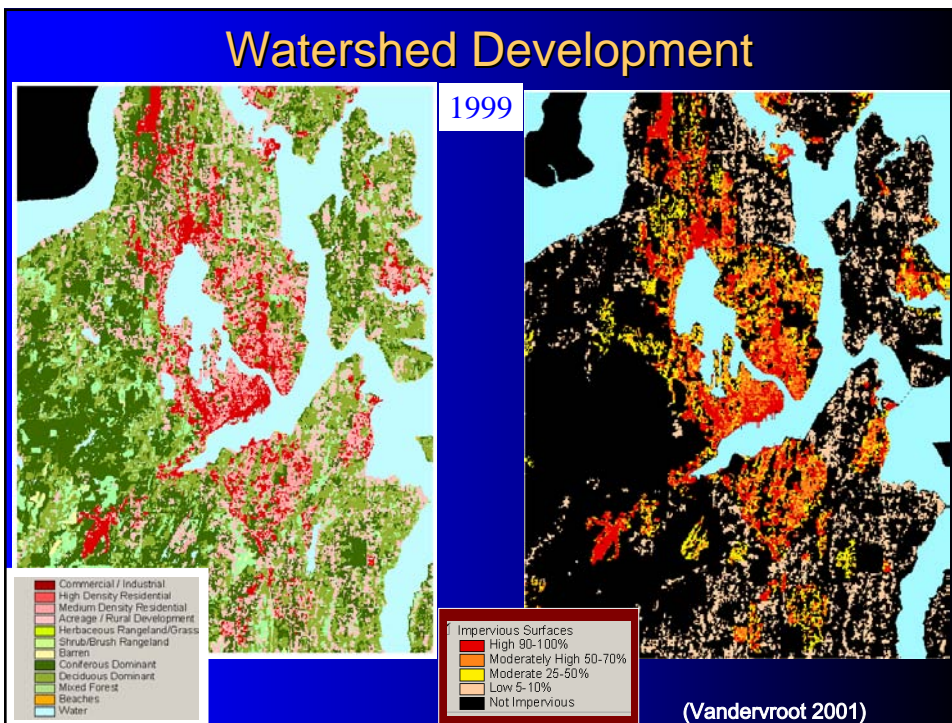
Watershed Development



Watershed Development



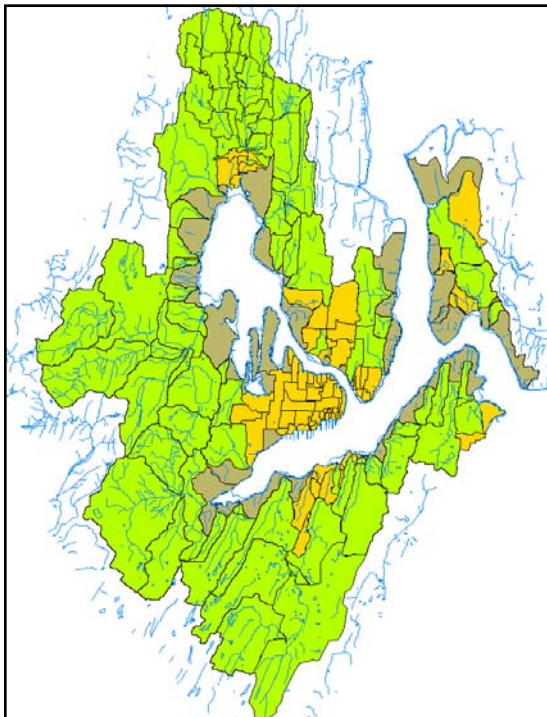
Watershed Development



Cooperative Storm Event Monitoring

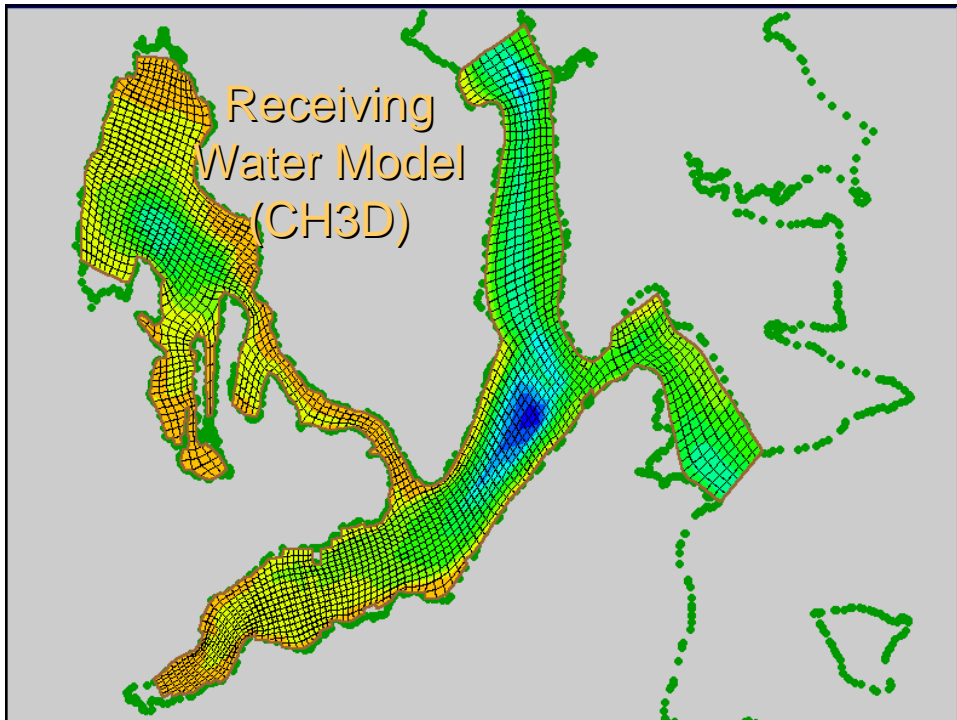


- Sample representative storm events
- Collecting data on hydrology and water quality parameters
- Relate landuse to environmental quality
- Quantify loading from the watershed into the receiving waters of the Inlet
- Support TMDLs



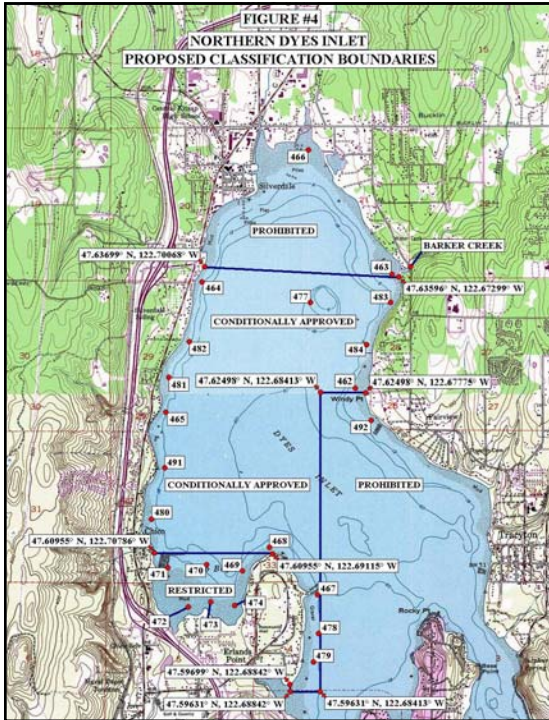
Watershed Model – HSPF

- Open channel (stream)
- Piped channel (storm water)
- Beach (sheet flow)



Modeling Studies

- Developed models for simulating runoff and loading from the watershed
- Bremerton's elimination CSOs and the ability to simulate FC fate and transport in the Inlets resulted in the re-opening of 1500 acres of shellfish beds in Dyes Inlet
- The integrated watershed-receiving water model is being verified so that the models can be used to simulate waste load allocation (WLA) and load allocation (LA) targets needed for the TMDL



Northern
Dyes Inlet
1500 acres
reclassified for
shellfish harvesting

Animation of Stream Discharge and CSO Event

Click here to load animation of stream discharge.
<http://www.psmem.org/models/graphics/Streamtoscn0.gif>

Click here to load animation of stream discharge and CSO event.
<http://www.psmem.org/models/graphics/Streamtoscn0.gif>

Summary

- Pool resources and data to get a better product.
- Watershed approach facilitates partnering.
- Much better chance for successful implementation.
- Compliance with Clean Water Act will cost less and do more.



REFERENCES

City of Bremerton, 2004. *CSO Reduction*.

<http://www.cityofbremerton.com/content/csoreduction.html>

Crecelius, E., R.K. Johnston, M. Miller, J. Brandenberger, J. Leather and J. Guerrero. 2003. [Contaminant Mass Balance for Sinclair and Dyes Inlets, Puget Sound, WA](#).

[Proceedings of the 2003 Georgia Basin Puget Sound Research Conference, Vancouver, BC, Canada, April 2, 2003](#).

Determan, T. 2001. [Status and Trends in Fecal Coliform Pollution in Puget Sound Year 2000](#) - A Report for the Puget Sound Ambient Monitoring Program. Washington State Department of Health Office of Food Safety and Shellfish Programs Aug 2001.

Determan, T. 2003. [Atlas of Fecal Coliform Pollution in Puget Sound: Year 2001](#) - A Report for the Puget Sound Ambient Monitoring Program Washington State Department of Health Office of Food Safety and Shellfish Programs January 2003.

Johnston, R.K., M.L. Rideout, C.W. May, and G.M. Sherrell. 2001. [A Watershed-based Ecological Risk Assessment for Sinclair Inlet, Washington](#). [Proceedings of the 2001 Puget Sound Research Conference, Bellevue, Washington, Feb. 12 to 14, 2001](#).

Johnston, R.K., P.F. Wang, H. Halkola, K.E. Richter, V.S. Whitney, B.E. Skahill, W.H. Choi, M. Roberts, R. Ambrose, and M. Kawase. 2003. [An Integrated Watershed-Receiving Water Model For Sinclair and Dyes Inlets, Puget Sound, Washington, USA](#). Presentation at Estuarine Research Federation 2003 Conference *Estuaries on the Edge: Convergence of Ocean, Land and Culture*, Sep 14-18, 2003, Seattle, WA.

Johnston, R.K. C.W. May, B. Beckwith, V.S. Whitney, and J.M. Wright. 2004. [Fecal Coliform Model Verification Sampling Plan: Winter 2004](#). Addendum to the Fecal Coliform Total Maximum Daily Load Study Plan For Sinclair and Dyes Inlets. Puget

*Sound Naval Shipyard & Intermediate Maintenance Facility Project ENVVEST.
February 19, 2004.*

*Johnston, R.K. and P.F. Wang 2004. A PARTNERSHIP FOR MODELING THE
MARINE ENVIRONMENT OF PUGET SOUND, WASHINGTON – PUGET SOUND
NAVAL SHIPYARD REPORT. National Ocean Partnership Program, Office of Naval
Research 2004 Annual Report.*

*KCHD (Kitsap County Health District). 2002. [Water Quality Program](#) 2000-2001 WATER
QUALITY MONITORING REPORT. [Executive Summary](#), [Introduction](#), [Dyes Inlet
Watershed](#), [Sinclair Inlet Watershed](#).*

*KCHD. 2003a. [Water Quality Program](#) 2001-2002 WATER QUALITY MONITORING
REPORT. [Introduction](#), [Dyes Inlet Watershed](#), [Sinclair Inlet Watershed](#).*

*KCHD. 2003b. [Water Quality Trend Monitoring Plan, Streams and Marine Waters](#),
Water Quality Program, Last Updated 5/30/2003.*

*Kohn, N.P., M. C. Miller, J. M. Brandenberger, and R.K. Johnston 2004. Final Report
Metals Verification Study for Sinclair and Dyes Inlets, Washington. Prepared by
Battelle Marine Sciences Laboratory for PSNS&IMF Project ENVVEST.*

*May, C.W., G. Sherrell, R.K. Johnston, F. Meriwether, T. Determan, W. Kendra, S.
Magoon, S. Whitford, and J. Zimney. 2003. Assessment of Bacterial Contamination
in the Sinclair-Dyes Inlet Watershed: The Initial Phase of a Watershed-based TMDL
Implementation Program, presented at the Pacific Northwest Regional Water
Conference October 29-30, 2003, Stevenson, WA.*

*May, C.W., et al., 2004 (in review). An Analysis of Microbial Pollution in the Sinclair-
Dyes Inlet Watershed, Final Report. Prepared by Battelle Marine Sciences
Laboratory for PSNS & IMF Project ENVVEST, November 2004.*

McLaren, P., and Bowles, D., 1985: *The effects of sediment transport on grain-size distributions. Journal of Sedimentary Petrology, 55, 457-470.*

McLaren, Patrick 1998. *A Sediment Trend Analysis (STA®) of Sinclair Inlet/Port Orchard. [GeoSea® Consulting](#) (Canada) Ltd., Brentwood Bay, BC,*

McLaren, Patrick 1997. *The sediment transport regime of Dyes Inlet/Ostrich Bay: Implications for contaminant mitigation. [GeoSea® Consulting](#) (Canada) Ltd., Brentwood Bay, BC,*

McLaren, Patrick 2004. *The Sediments Of Dyes And Sinclair Inlets: An Assessment of Change Between 1997-8 and 2003. [GeoSea® Consulting](#) (Canada) Ltd., Brentwood Bay, BC,*

SSWM (Kitsap County Public Works Surface and Stormwater Management). 2003. [Annual Report 2003.](#)

US EPA 2000. *EPA Superfund Record of Decision: PUGET SOUND NAVAL SHIPYARD COMPLEX EPA ID: WA2170023418 OU 02 BREMERTON, WA EPA/ROD/R10-00/516 2000.*
<http://www.epa.gov/superfund/sites/rods/fulltext/r1000516.pdf>

US EPA 2004. *Superfund Site Progress Profile: PUGET SOUND NAVAL SHIPYARD COMPLEX . <http://cfpub.epa.gov/supercpad/cursites/csinfo.cfm?id=1001107>*

US Navy, US EPA, and Washington State Department of Ecology 2000. *Project ENVVEST: Phase I Final Project Agreement for the Puget Sound Naval Shipyard, September 25, 2000 [Federal Register: October 23, 2000 (Volume 65, Number 205)]. <http://www.epa.gov/ProjectXL/puget2/fpassigned.pdf>*

US Navy, US EPA, and Washington State Department of Ecology 2002. *FINAL DRAFT Fecal Coliform Total Maximum Daily Load Study Plan For Sinclair and Dyes Inlets. Draft Quality Assurance Project Plan Prepared by PSNS Project ENVVEST*

Regulatory Working Group For Washington State Department of Ecology Watershed Assessments Sections October 4, 2002.

http://www.ecy.wa.gov/programs/wq/tmdl/watershed/sinclair-dyes_inlet/fc_tmdl_studyplan_final_draft_print.pdf

US. Navy 2002. FINAL FIVE-YEAR REVIEW OF RECORD OF DECISION

BREMERTON NAVAL COMPLEX U.S. Navy, Engineering Field Activity, Northwest Contract No. N44255-00-D-2476 Delivery Order 0017

<http://www.epa.gov/superfund/sites/fiveyear/f03-10001.pdf>

Vandervoort, D. 2001. GIS analysis for watershed assessment. Presentation for the PSNS ENVVEST Modeling Technical Working Group Meeting, Aug 29-30, 2001, Naval Subbase Bangor, Wa.

WDOE (Washington State Department of Ecology) 1998. Final 1998 Section 303(d) List -WRIA 15. <http://www.ecy.wa.gov/programs/wq/303d/1998/wrias/wria15.pdf>

WDOE 2005. [Sinclair/Dyes Inlets Water Cleanup Plan \(TMDL\)](#).

WDOH (Washington State Department of Health). 2003a. [Shellfish harvesting opens in Northern Dyes Inlet](#), News Release Oct. 31, 2003.

WDOH. 2003b. Sanitary Survey of North Dyes Inlet. October 2003. Office of Food Safety and Shellfish Programs. 50 pp.

For More Information Please Contact:

Robert K. Johnston, Ph.D.

Marine Environmental Support Office - NW

Space and Naval Warfare Systems Center Code 2375

4228 Fir Dr. NE

Bremerton, WA 98310

work: 360 782-0113 cell: 360 961-9072

fax 360-824-6279

johnston@spawar.navy.mil

<http://meso.spawar.navy.mil>