

Report Documentation Page

Form Approved
OMB No. 0704-0188

Public reporting burden for the collection of information is estimated to average 1 hour per response, including the time for reviewing instructions, searching existing data sources, gathering and maintaining the data needed, and completing and reviewing the collection of information. Send comments regarding this burden estimate or any other aspect of this collection of information, including suggestions for reducing this burden, to Washington Headquarters Services, Directorate for Information Operations and Reports, 1215 Jefferson Davis Highway, Suite 1204, Arlington VA 22202-4302. Respondents should be aware that notwithstanding any other provision of law, no person shall be subject to a penalty for failing to comply with a collection of information if it does not display a currently valid OMB control number.

1. REPORT DATE 2006		2. REPORT TYPE		3. DATES COVERED 00-00-2006 to 00-00-2006	
4. TITLE AND SUBTITLE WindSat Polarmetric View of Greenland				5a. CONTRACT NUMBER	
				5b. GRANT NUMBER	
				5c. PROGRAM ELEMENT NUMBER	
6. AUTHOR(S)				5d. PROJECT NUMBER	
				5e. TASK NUMBER	
				5f. WORK UNIT NUMBER	
7. PERFORMING ORGANIZATION NAME(S) AND ADDRESS(ES) Naval Research Laboratory, 4555 Overlook Avenue SW, Washington, DC, 20375				8. PERFORMING ORGANIZATION REPORT NUMBER	
9. SPONSORING/MONITORING AGENCY NAME(S) AND ADDRESS(ES)				10. SPONSOR/MONITOR'S ACRONYM(S)	
				11. SPONSOR/MONITOR'S REPORT NUMBER(S)	
12. DISTRIBUTION/AVAILABILITY STATEMENT Approved for public release; distribution unlimited					
13. SUPPLEMENTARY NOTES					
14. ABSTRACT					
15. SUBJECT TERMS					
16. SECURITY CLASSIFICATION OF:			17. LIMITATION OF ABSTRACT	18. NUMBER OF PAGES	19a. NAME OF RESPONSIBLE PERSON
a. REPORT unclassified	b. ABSTRACT unclassified	c. THIS PAGE unclassified			

WindSat Polarimetric View of Greenland

L. Li and P. Gaiser
Remote Sensing Division

Introduction: WindSat is the first spaceborne microwave polarimetric radiometer that measures all four elements of the Stokes vector, the brightness temperatures at vertical and horizontal polarizations (T_V and T_H), and the real and imaginary parts of the cross-correlation of the vertical and horizontal polarization known as the third and fourth Stokes parameters (T_U and T_F).¹ WindSat was developed by NRL and had been in operation since January 2003. The polarimetric signatures of the third and fourth Stokes measurements are mostly related to the asymmetric structures of the ocean-wind-driven surface roughness. Prior to the launch of WindSat, it was a common belief that land polarimetric signatures at satellite footprint scales would be below the instrument noise level and would not carry any useful geophysical information. However, postlaunch data processing reveals significant land signals in the T_U and T_F , particularly over Greenland and the Antarctic ice sheets, which are the most environmentally sensitive Earth media, playing a significant role in global sea level and climate changes. Understanding this polarimetric signature, uniquely afforded by WindSat, and its relation with the snow properties and microstructures will have a profound impact on climate study.

Methodology: By observing the changes in the microwave signature, one can infer temporal and spatial variations in the physical properties of the ice sheet. A simple and effective way to represent the microwave signature is to construct an empirical observation model that can describe and separate different effects in the measurements using a small number of model parameters.² Over Greenland, it is well-known that T_V and T_H respond mostly to the dielectric properties of the snow,² ice and firn. WindSat data now show that T_U and T_F respond most strongly to the asymmetric structure of the snowpack and can be strong functions of the observation geometry, including the azimuth look angle. Therefore we examine the azimuthal modulations of T_U and T_F to separate observation geometry effects from environmental variations. The temporal and spatial variations of these azimuthal modulation coefficients can provide insight about the microwave scattering mechanism and its related geophysical processes.

Results: Figure 8 depicts T_U (left panel) and T_F (right panel) Stokes measurements at 10.7 GHz over the North Hemisphere for the period 1–10 February 2004. T_U shows coherent large-scale signals varying between ± 2.5 K over the ocean and about 0.5 to 1 K signals over ice-free land. The variation for T_F over ocean and land is much smaller, less than ± 1 K. However, over Greenland, both parameters show variations up to eight times larger than the ocean

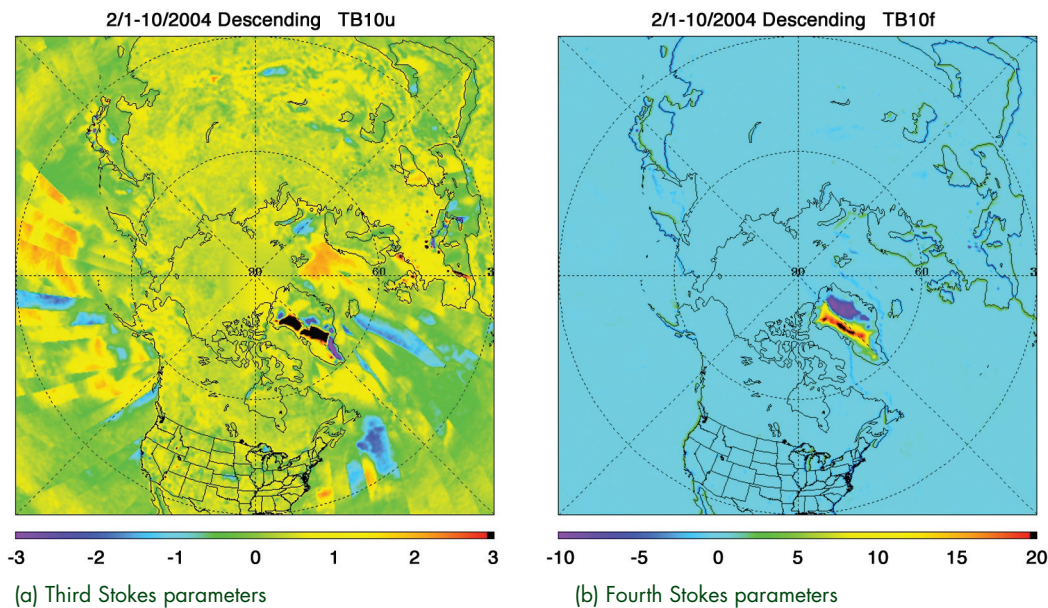


FIGURE 8

Composite WindSat polarimetric measurements at 10.7 GHz. The descending pass data were collected by WindSat during 1–10 February 2004.

signature, where T_{II} varies between ± 10 K and T_F from -10 to $+20$ K. Such large polarimetric signatures can be attributed mostly to the volume scattering by the porous Greenland snow media. Figure 9 illustrates the azimuthal dependence of polarimetric data extracted from the WindSat data at a location on the Summit of the Greenland ice sheet for April 2003. The two clusters of points are from ascending (near 210°) and descending (near 340°) revs. T_{II} and T_F are plotted for 10.7, 18.7, and 37 GHz, and all clearly show very well-defined azimuthal dependences. The solid lines represent the empirical model expressed as second-order harmonic functions, suggesting an excellent model fit to the data.

Figure 10 shows the time-series of first- and second-order harmonic coefficients of empirical observation model for T_{II} and T_F at 10.7, 18.7, and 37 GHz channels at the Greenland Summit. The first harmonic coefficients describe the scattering signatures that are related to the asymmetric structure of the snowpack, possibly induced by the surface slope or skewness of the snow dune. The second harmonic coefficients describe asymmetric features of the snowpack in direc-

tions parallel and orthogonal to the dune direction. The T_F signals are stronger than those from T_{II} over Greenland. This is a striking contrast to relatively weak polarimetric signatures generated by ocean surface scattering and indicates significant volume scattering contributions to the polarimetric signals. All harmonic coefficients peak in late winter to early spring when the snow metamorphism is most intense, and are weak in the middle summer when the penetration depth is dramatically reduced. This again highlights the importance of volume scattering in the polarimetric signals.

Summary: WindSat polarimetric data exhibit distinct geophysical and observation geometry signatures over Greenland that are correlated with geophysical variations, including snow microstructure, melting, and metamorphism. Therefore, WindSat provides an unprecedented and unique dataset for environmental and climate studies in the polar region. Furthermore, these results demonstrate how future polarimetric microwave radiometer missions can be exploited for climate studies.

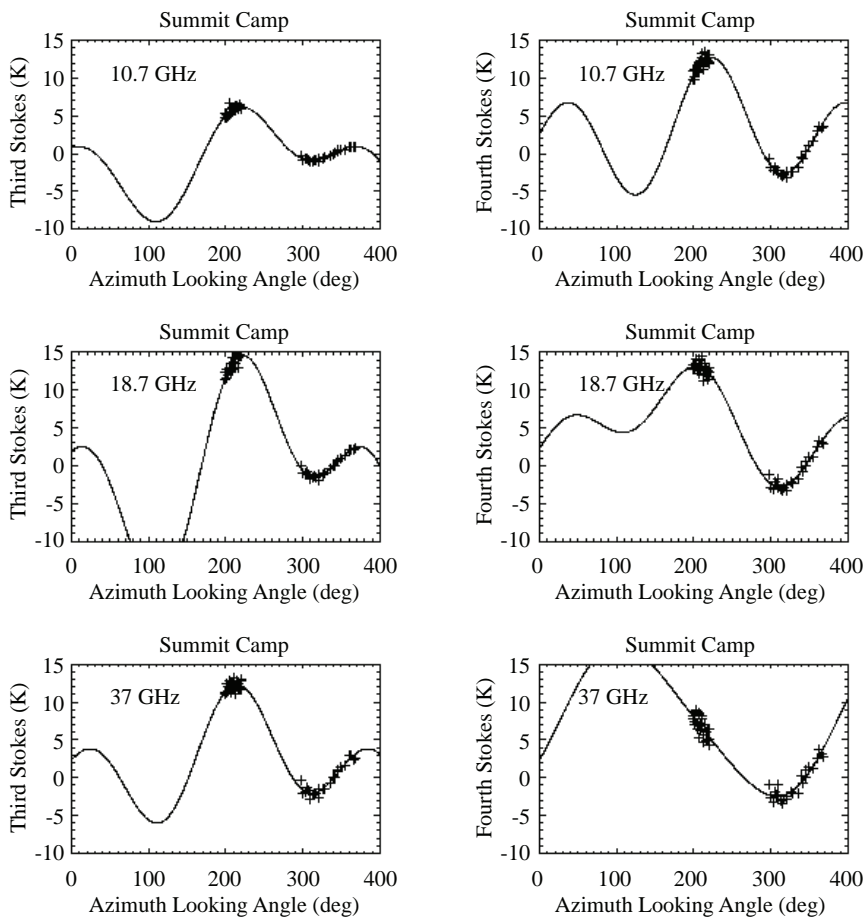


FIGURE 9 Third and fourth Stokes parameters observed by WindSat over the Summit study site in Greenland during April 2003. The solid line is the fitted second-order harmonic model. The left column shows the third Stokes parameter while the right column shows the fourth Stokes parameter. The top row is 10.7 GHz, the center row is 18.7 GHz, and the bottom row is 37 GHz.

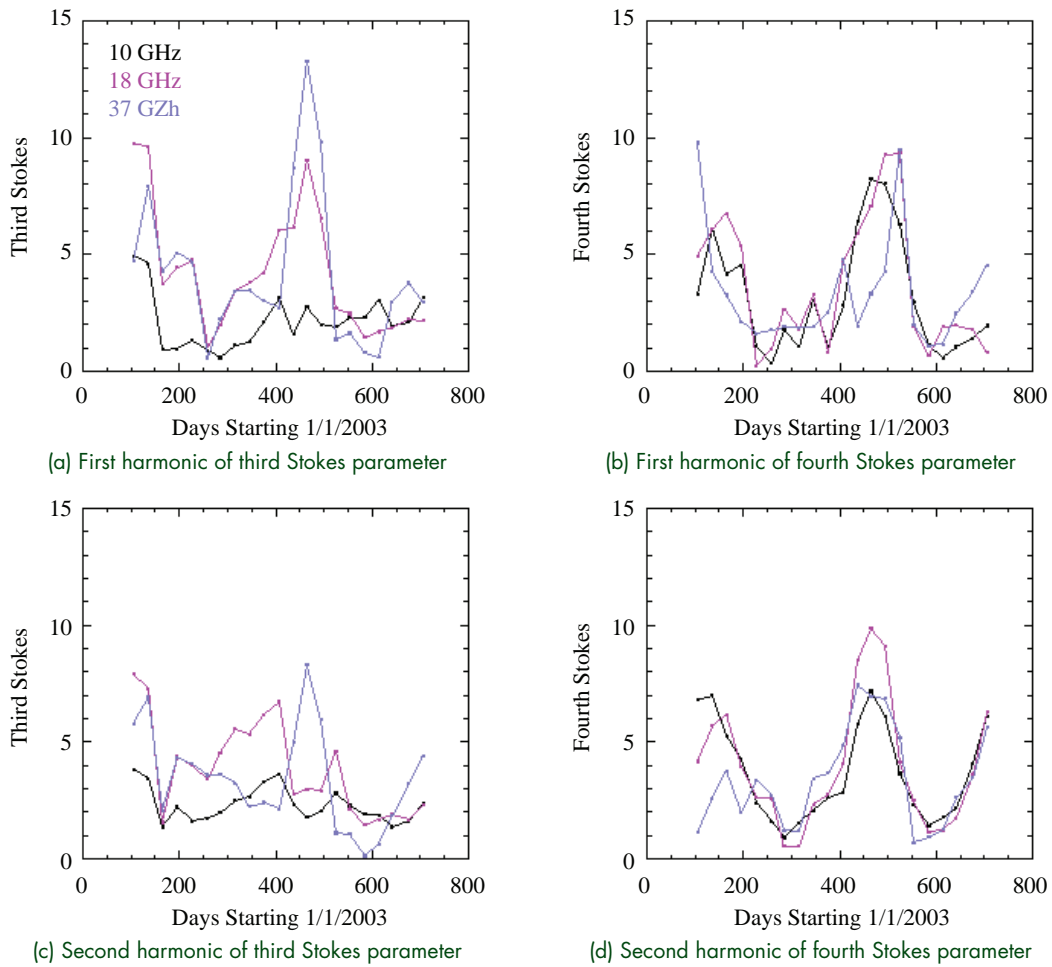


FIGURE 10
 Time series of WindSat observations over the Greenland Summit study site from 1 April 2003 to 30 December 2004. The 10.7, 18.7, and 37.0 GHz data are color-coded with black, purple, and blue, respectively.

[Sponsored by ONR]

References

¹ P.W. Gaiser, et al., "The WindSat Spaceborne Polarimetric Microwave Radiometer: Sensor Description and Early Orbit Performance," *IEEE Trans. Geosci. Rem. Sens.* **42**, 2347-2361, (2004).

² I.S. Ashcraft and D. Long, "Observation and Characterization of Radar Backscatter over Greenland," *IEEE Trans. Geosci. Rem. Sens.* **43**, pp. 225-237 (2005). ★