



The Use of Vitreous Enamel Coatings to Improve Bonding and Reduce Corrosion in Concrete Reinforcing Steel

Sean W. Morefield¹, Philip G. Malone², Vincent F. Hock¹, Orange S. Marshall¹, Donna C. Day², Charles A. Weiss, Jr. ²,

1. Construction Engineering Research Laboratory,
2. Geotechnical and Structures Laboratory
USAE Research and Development Center



Report Documentation Page

Form Approved
OMB No. 0704-0188

Public reporting burden for the collection of information is estimated to average 1 hour per response, including the time for reviewing instructions, searching existing data sources, gathering and maintaining the data needed, and completing and reviewing the collection of information. Send comments regarding this burden estimate or any other aspect of this collection of information, including suggestions for reducing this burden, to Washington Headquarters Services, Directorate for Information Operations and Reports, 1215 Jefferson Davis Highway, Suite 1204, Arlington VA 22202-4302. Respondents should be aware that notwithstanding any other provision of law, no person shall be subject to a penalty for failing to comply with a collection of information if it does not display a currently valid OMB control number.

1. REPORT DATE FEB 2009		2. REPORT TYPE		3. DATES COVERED 00-00-2009 to 00-00-2009	
4. TITLE AND SUBTITLE The Use of Vitreous Enamel Coatings to Improve Bonding and Reduce Corrosion in Concrete Reinforcing Steel				5a. CONTRACT NUMBER	
				5b. GRANT NUMBER	
				5c. PROGRAM ELEMENT NUMBER	
6. AUTHOR(S)				5d. PROJECT NUMBER	
				5e. TASK NUMBER	
				5f. WORK UNIT NUMBER	
7. PERFORMING ORGANIZATION NAME(S) AND ADDRESS(ES) U.S. Army Corps of Engineers, Engineer Research and Development Center, Construction Engineering Research Laboratory, Champaign, IL, 61826-9005				8. PERFORMING ORGANIZATION REPORT NUMBER	
9. SPONSORING/MONITORING AGENCY NAME(S) AND ADDRESS(ES)				10. SPONSOR/MONITOR'S ACRONYM(S)	
				11. SPONSOR/MONITOR'S REPORT NUMBER(S)	
12. DISTRIBUTION/AVAILABILITY STATEMENT Approved for public release; distribution unlimited					
13. SUPPLEMENTARY NOTES 2009 U.S. Army Corrosion Summit, 3-5 Feb, Clearwater Beach, FL					
14. ABSTRACT					
15. SUBJECT TERMS					
16. SECURITY CLASSIFICATION OF:			17. LIMITATION OF ABSTRACT Same as Report (SAR)	18. NUMBER OF PAGES 30	19a. NAME OF RESPONSIBLE PERSON
a. REPORT unclassified	b. ABSTRACT unclassified	c. THIS PAGE unclassified			

Overview



US Army Engineer Research & Development Center

- Corrosion of Reinforcing Steel in Concrete
- Strategies to Prevent Corrosion
- Alkali-resistant Vitreous Enamel Testing and Results
- Ongoing Demonstration Work at CCAD
- Summary



One Corps, One Regiment, One Team . . . Serving Soldiers, the Army, the Nation

Problem of Corrosion of Reinforcing Steel in Concrete



US Army Engineer Research & Development Center

- Deterioration of reinforced concrete structures directly effects military readiness.
- Corrosion problems are typically related to docks, bulkheads, retaining walls and mooring structures
- U.S. has 276 inland locks, 1,914 deep water ports and 1,812 ports on inland waterways
- Estimated cost for infrastructure repair is \$30M annually



One Corps, One Regiment, One Team . . . Serving Soldiers, the Army, the Nation



Failure of Concrete with Mild Steel Reinforcement is Due to Corrosion of the Steel



US Army Engineer Research & Development Center

- The major cause of failure in reinforced concrete is the corrosion of the reinforcing steel whether it is rebar or steel fiber
- The rusting of iron embedded in the concrete increases the volume and cracks the concrete apart
- All normal reinforced concrete (cast-in-place and precast) may have a short service life due to corrosion

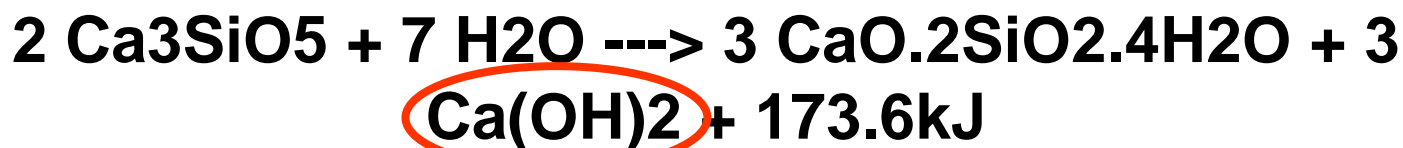


Concrete Composition

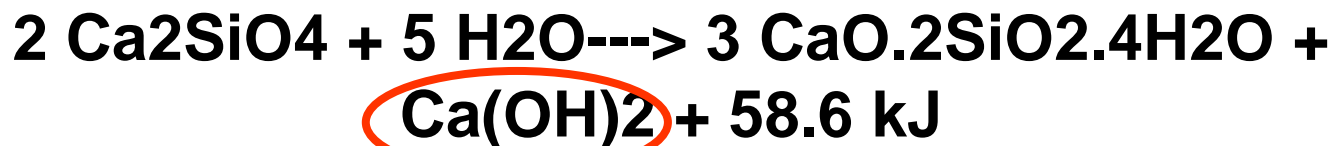


Cement Reactions Set Conditions

Tricalcium silicate + Water--->
Calcium silicate hydrate + Calcium hydroxide +
heat



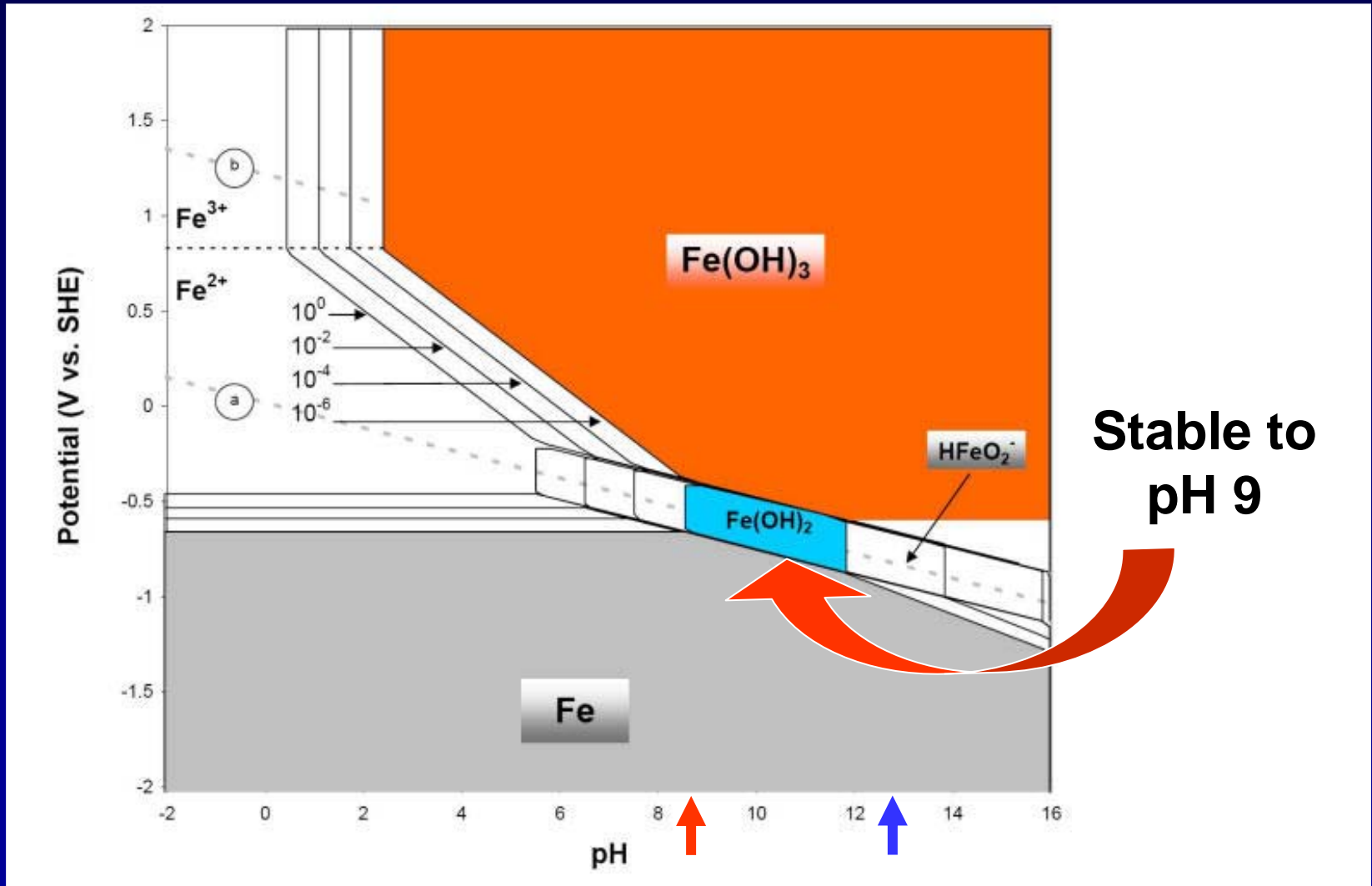
Dicalcium silicate + Water--->
Calcium silicate hydrate + Calcium hydroxide
+ heat



Initial pH in fresh paste is 12.5 to 13



Formation of Fe Passive Layer

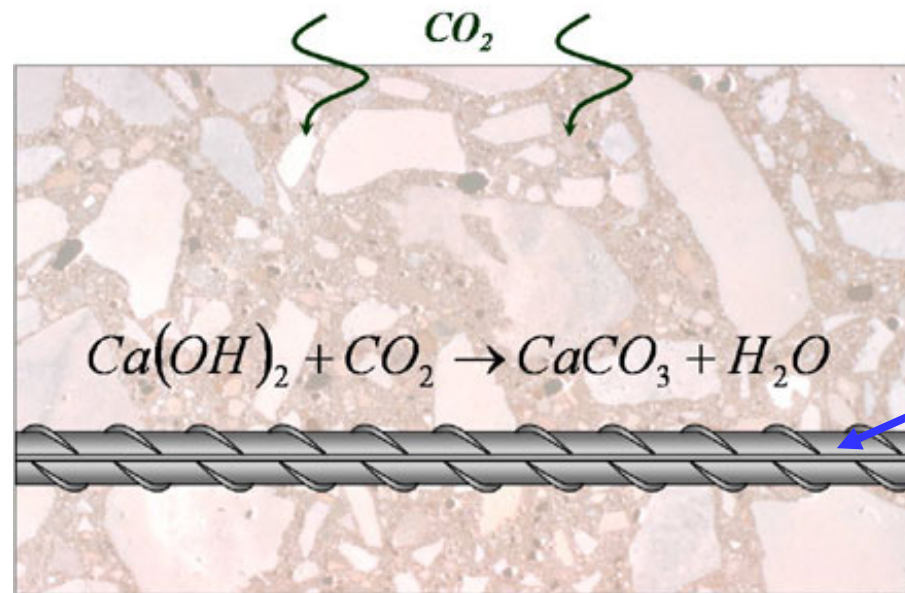


Reduction in pH in Concrete

Pozzolanic Reactions

And

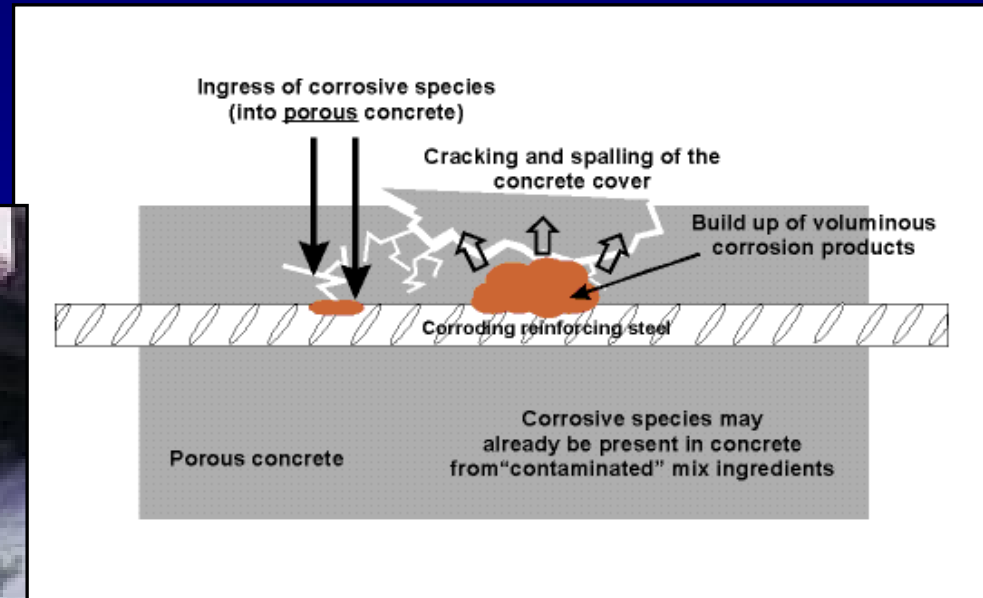
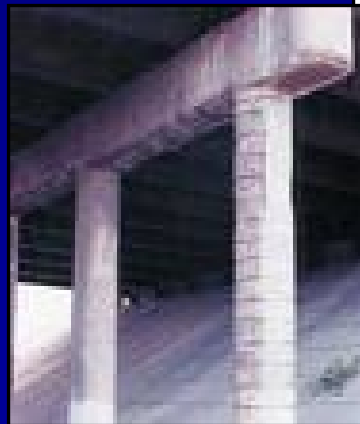
Carbonation



pH drops from ~13 to ~9

Why Reinforcement Steel in Concrete Corrodes

- All chemical changes that occur after concrete hardens increase the likelihood that the steel will corrode
- Reactions with the carbon dioxide in the air make the concrete less alkaline and remove the stable iron oxide coating that prevents the orange rust formation
- Infiltration of chlorides from sea spray or road salt increase corrosion
- Hollow spots around the steel expose the metal surface



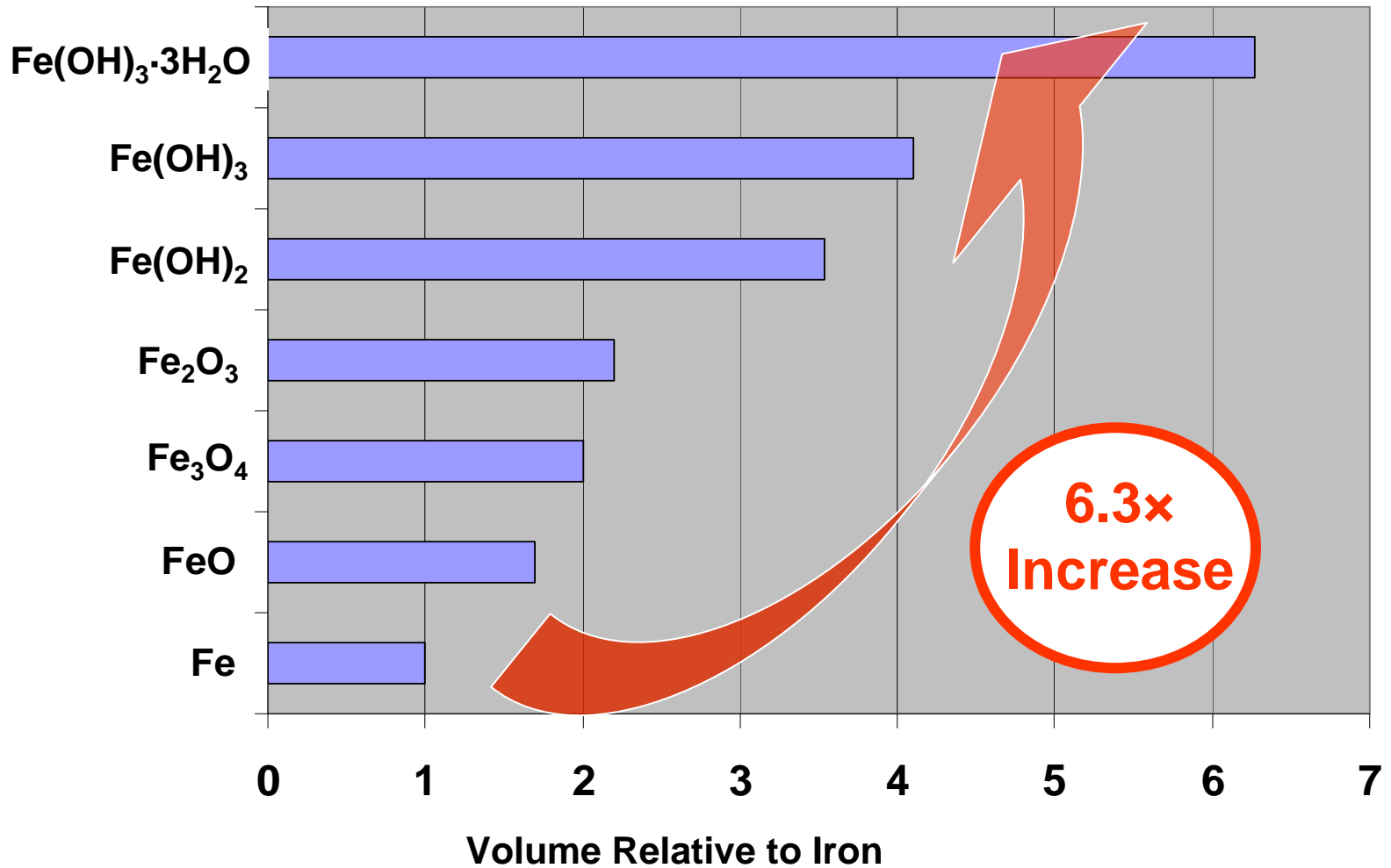
Increasing the Volume of the Iron Oxide Layer Cracks the Concrete



US Army Engineer Research & Development Center



Volume Relative to Iron



One Corps, One Regiment, One Team . . . Serving Soldiers, the Army, the Nation

Strategies to Prevent Corrosion

- Coat the reinforcement with an insulator
- Maintain the alkalinity of the surface of the steel reinforcement
- Coat reinforcement with sacrificial metal (zinc)
- Substitute a non-corroding reinforcement materials (stainless steel, fiber-reinforced polymer)
- Add corrosion inhibitors to the concrete
- Use a external cathodic protection system
- Use combinations of systems



**All of the above have been tried!
There are no economical
solutions!**

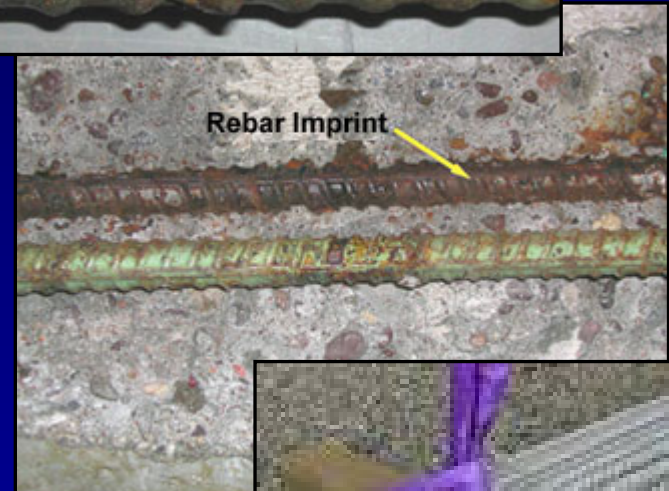


Reinforcement Developed for Stopping Corrosion

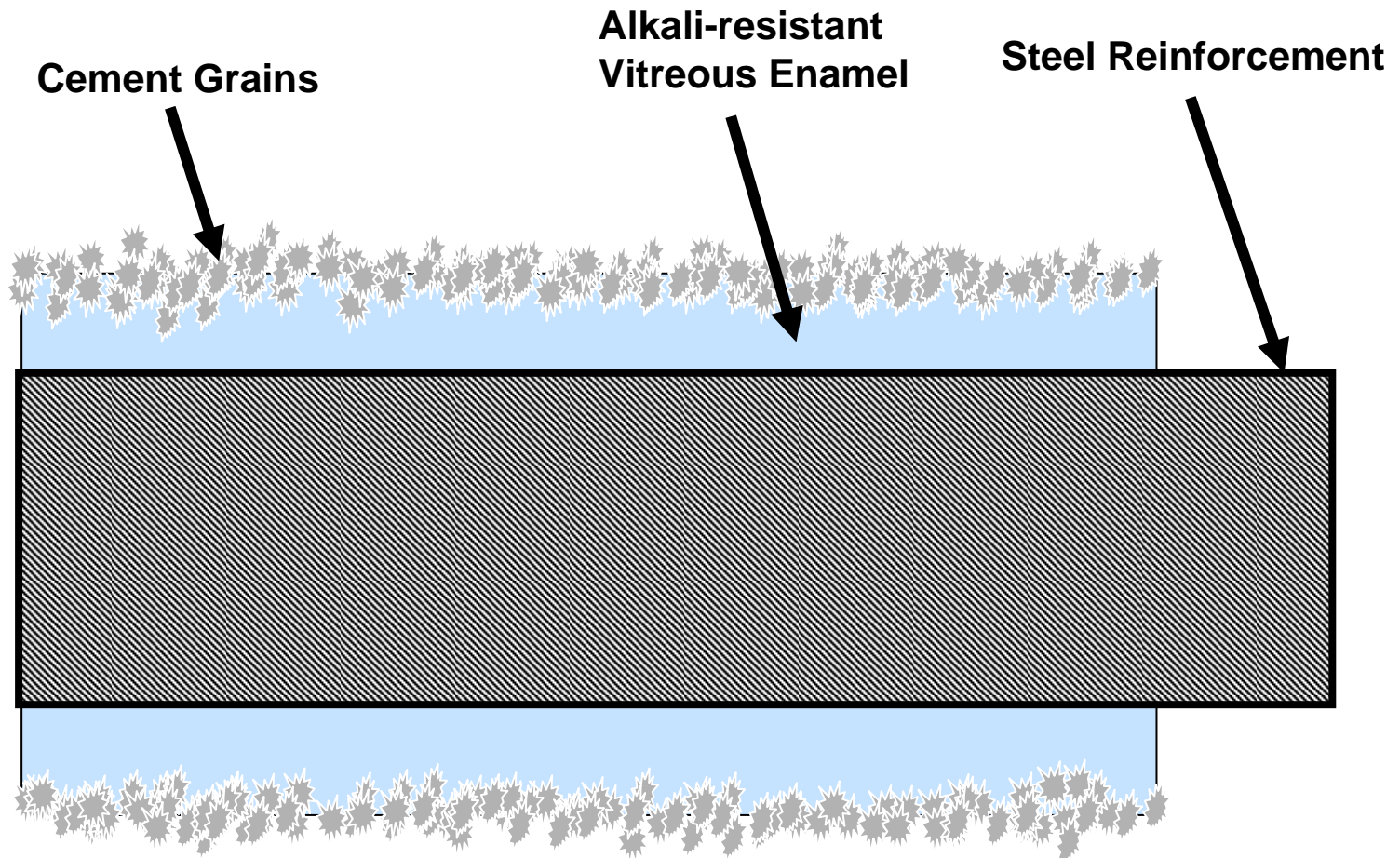


US Army Engineer Research & Development Center

- Black steel with organic coatings such as hot fused epoxy
- Black steel with hot-dip galvanizing
- Specialty alloys such as MMFX
- Stainless steel cladding
- Solid stainless steel (316)
- Glass fiber reinforced polymer rebar (FRP)
- Black steel with vitreous enamel coating



How does Bonding Enamel Work?



Enamel protects and steel from corrosion; the cement grains hydrate and bond to surrounding concrete



Bonding Enamel Has Serious Advantages!

- Enamel insulates the surface and prevents electrochemical effects that cause corrosion
- Enamel covers the surface to prevent chloride contact
- Provides a tight bond and dense cemented layer



The cement-glass layer fused to the surface of the steel produces a bond strength that is significantly greater than that obtained with a bare steel surface (usually at least 2 to 4 times greater). All other coatings decrease bond strength.



Enameled Test Rods



- Rods can be single-coated and fired once or double coated and fired twice
- Firing temperatures were in the 745 °C to 850 °C
- Firing times ranged from 2 minutes to 10 minutes



Mild Steel Test Rods



Alkali-resistant Enamel

COMPOSITION OF CONVENTIONAL AND ALKALI-RESISTANT GROUNDCOAT ENAMELS FOR STEEL

Constituent	Conventional Groundcoat		Alkali-resistant Groundcoat	
	Amount (%)	Range (%)	Amount (%)	Range (%)
Silicon dioxide SiO ₂	54.69	51 – 65	42.02	40 – 45
Boron oxide B ₂ O ₃	12.47	9 – 15	18.41	16 – 20
Na oxide Na ₂ O	14.77	12 – 15	15.05	15 – 18
K oxide K ₂ O	1.71	1.7 – 3	2.71	2 – 4
Li oxide Li ₂ O	nil		1.06	1 – 2
Ca oxide CaO	4.54	3.5 – 5.3	4.47	3 – 5
Aluminum oxide Al ₂ O ₃	8.85	6 – 9	4.38	3 – 5
Zr oxide ZrO ₂	nil		5.04	4 – 6
Cu oxide CuO	nil		0.07	nil
Mn dioxide MnO ₂	0.45	0.4 – 0.7	1.39	1 – 2
Ni oxide NiO	nil		1.04	1 – 2
Cobalt oxide Co ₃ O ₄	0.31	0.2 – 0.35	0.93	0.5 – 1.5
Phosphorus oxide P ₂ O ₅	nil		0.68	0.5 – 1
Fluorine F ₂	2.27	1.7 – 2.6	2.75	2 – 3.5

US Army Engineer Research & Development Center



Reactive Enamel Increases Strength

COMPARISON OF AVERAGE BOND STRENGTHS

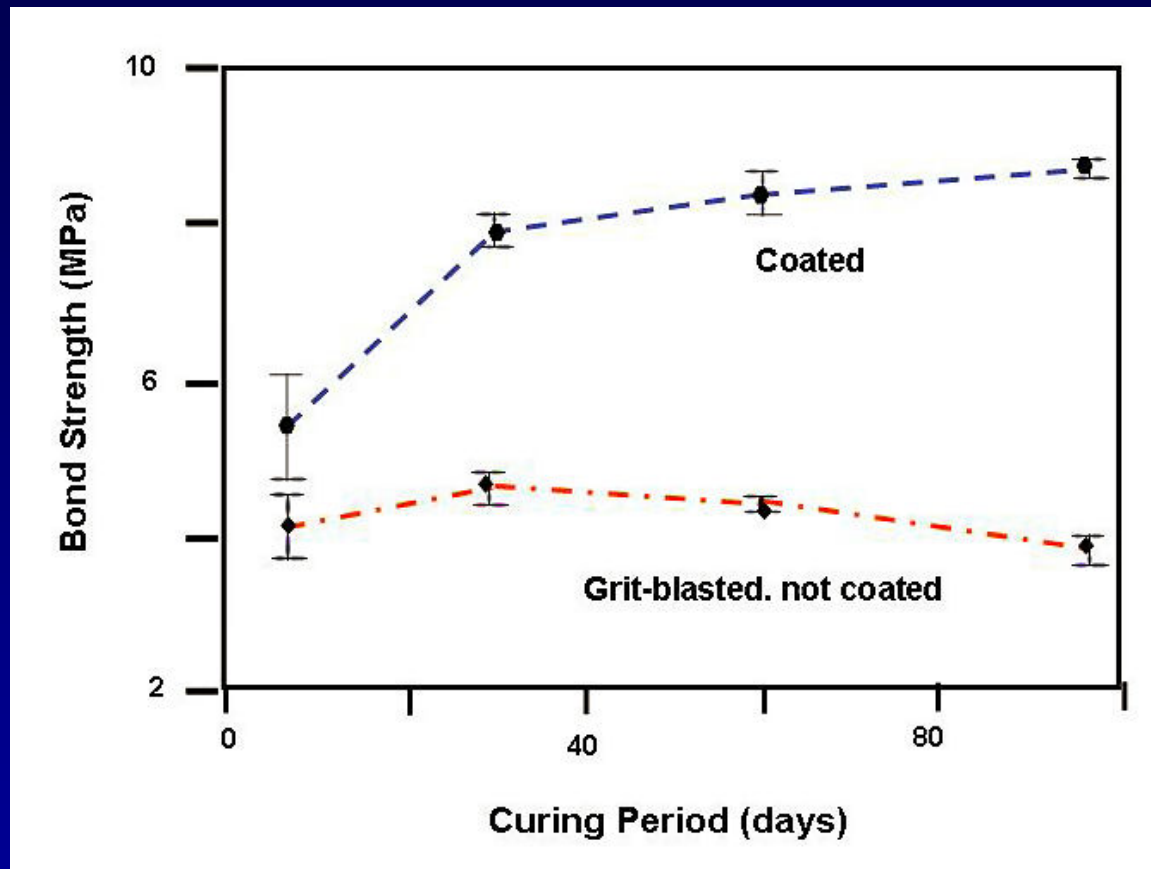
Treatment	Average Peak Force (N)	Std. Deviation (N)	Average Bond Strength (MPa)
Steel fiber embedded in mortar	---	---	2.04 – 2.72
Steel rods, uncoated embedded in mortar	2,618.2	466.2	2.06
Enameled rods without portland cement embedded in mortar	3,497.9	540.8	2.70
Rods with enamel containing portland cement embedded in mortar	11,124.6	235.3	8.79

3 or 4x STRONGER BOND



Reactive Enamel Increases Strength Over Time

- Bond strength of coated rebar increases over time
- Bond strength of non-coated rebar lower, and decreases over time



Salt Water Exposure Testing



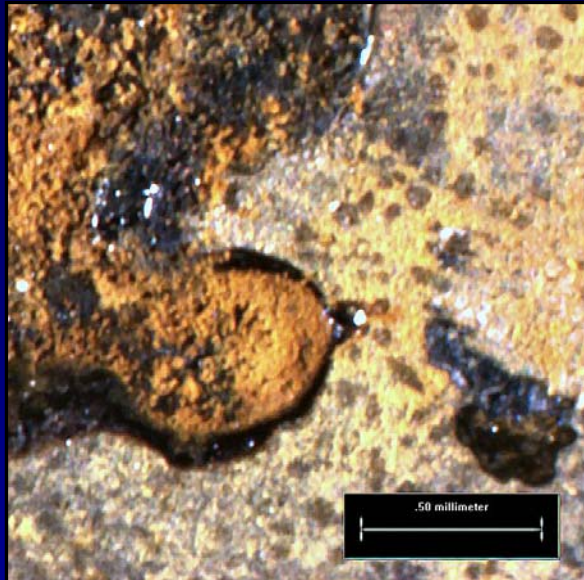
Exposure in Partly Saturated Quartz Sand with 3.5% Sodium Chloride Solution at 20 °C



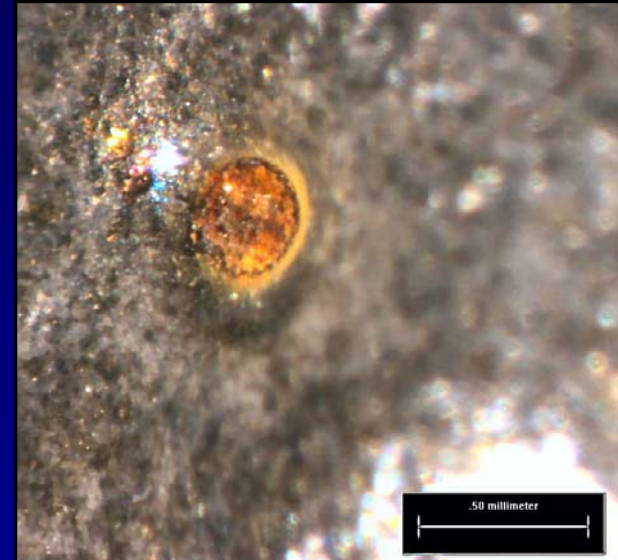


Salt Water Exposure of Bare Metal and Drilled Enamel

After 72-hour Exposure



Bare metal showed rapid corrosion over full surface



Enamel steel showed corrosion only where a hole had been cut through the enamel

US Army Engineer Research & Development Center



Salt Water Exposure at 40-days for Bare and Coated Test Rods



US Army Engineer Research & Development Center

Results of 40-day exposure of mild steel test rods in 3.5% NaCl solution at 20 °C



Alkali-resistant ground coat enamel w/ portland cement



Alkali-resistant ground coat enamel

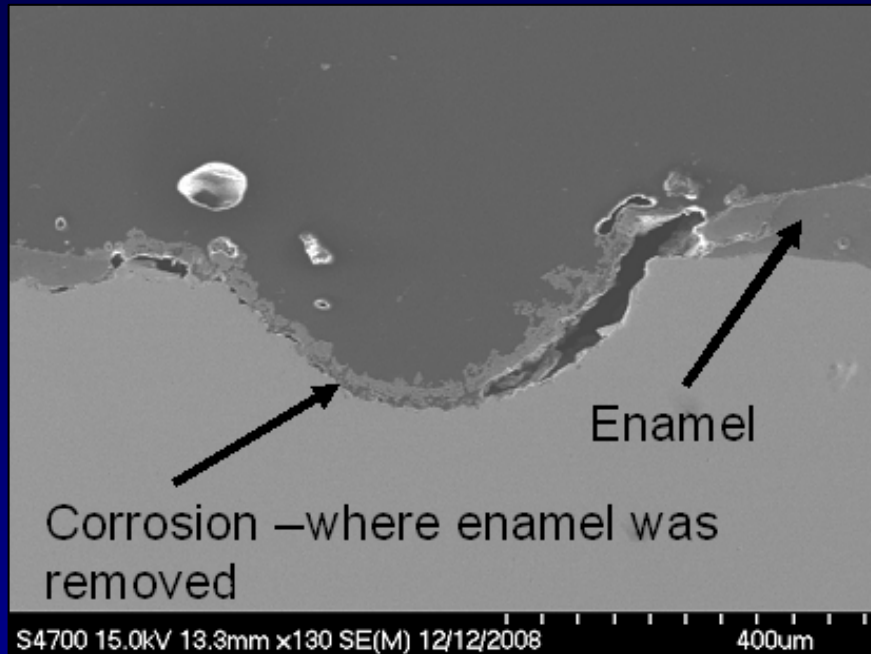
Cement on surface that contacted water hydrated



One Corps, One Regiment, One Team . . . Serving Soldiers, the Army, the Nation



Salt Water Exposure at 40-days for Coated Test Rods

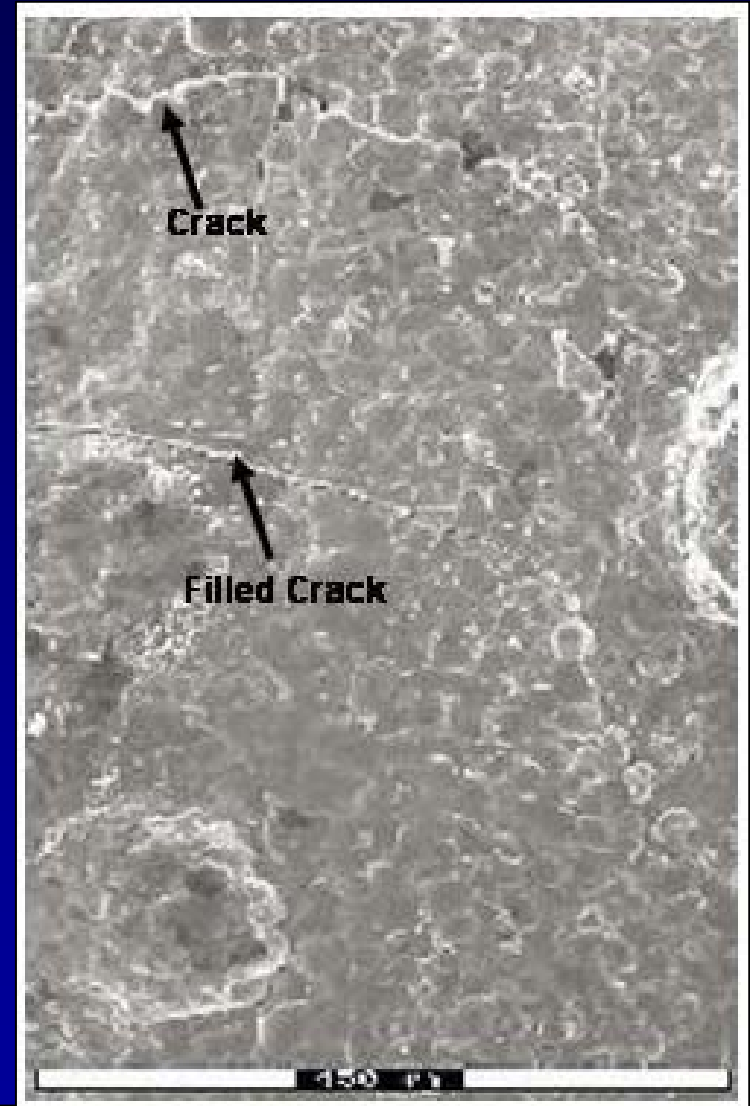


- SEM photomicrograph of the edge of a groove cut in the enamel to expose underlying metal.
- Rod was embedded in resin, sliced and polished to show the edges of the bare metal area. The enamel does not debond or allow capillary transfer of salt solutions





- **SEM Surface of enameled metal wire bent to produce fractures and partly wetted to produce examples of open and filled fractures.**
- **The reacted cement on the surface produces the irregular surface texture.**





US Army Engineer Research & Development Center

CCAD Demonstration Cooling Tower Support and Street Section



One Corps, One Regiment, One Team . . . Serving Soldiers, the Army, the Nation



CCAD Cooling Tower Support



- Exposure to Atmospheric Chlorides from Gulf of Mexico
- Spalling concrete from corroding steel

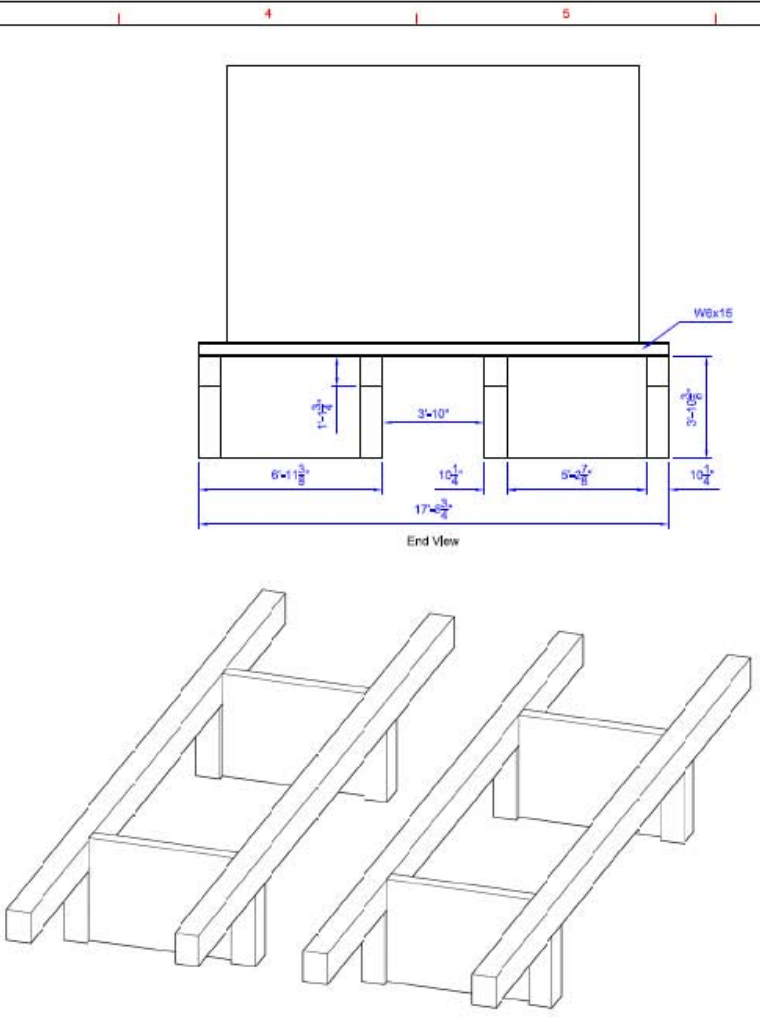
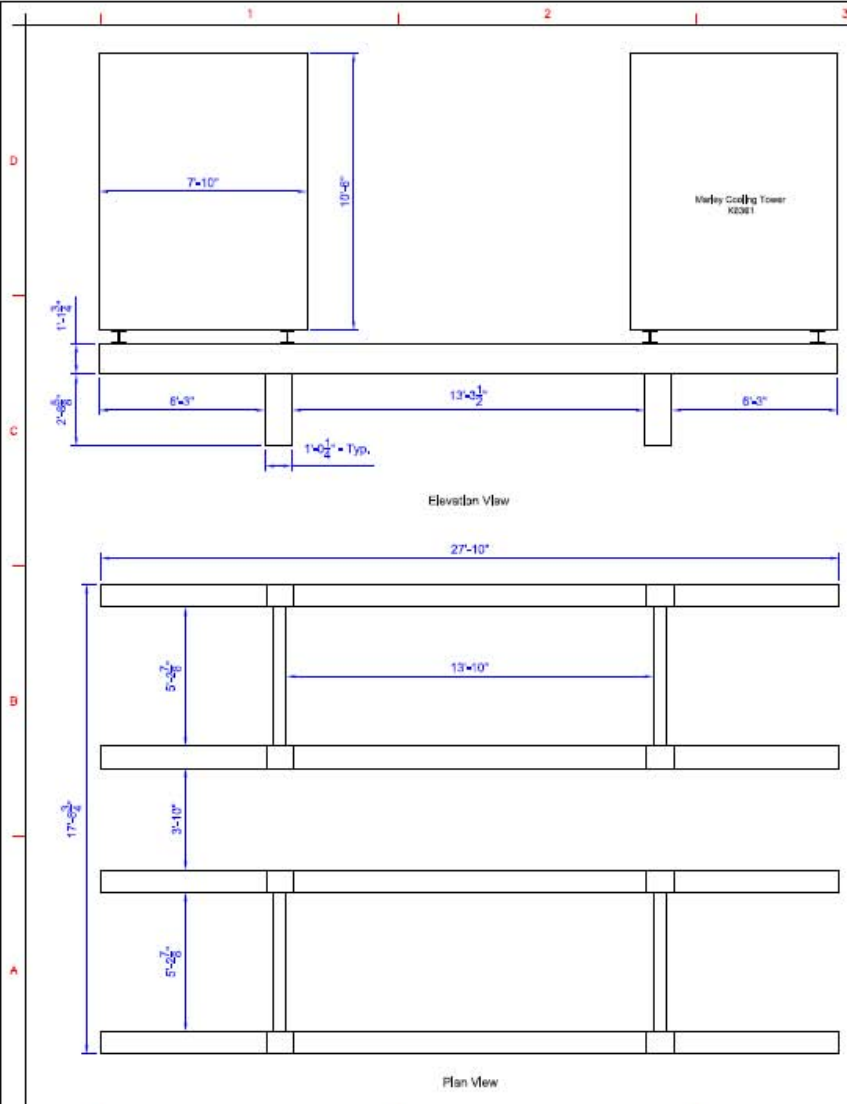


US Army Engine



One Corps, One Regiment, One Team . . . Serving Soldiers, the Army, the Nation

CCAD Cooling Tower Support Beams

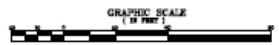
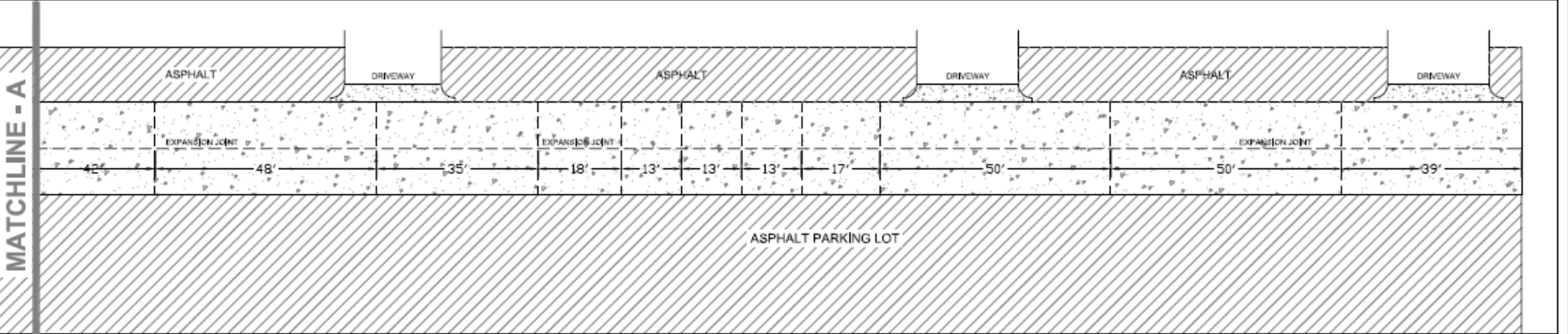
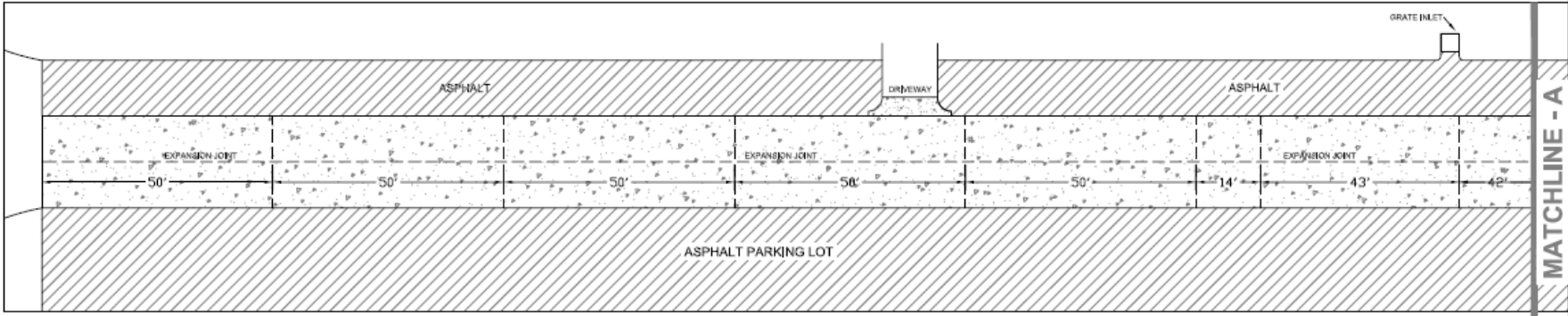


PROJECT NO. 00000000 DRAWING NO. 00000000 SHEET NO. 00000000	DATE 00/00/00 DRAWN BY CHECKED BY APPROVED BY
ORGANIZATION OF ENGINEERING SERVICES CORPUS CHRISTI ARMY DEPOT FACILITIES ENGINEERING BUILDING 1140, WY. A	DRAWN BY CHECKED BY APPROVED BY
ENGINE TITLE: MANAGER FACILITIES ENGINEERING CORPUS CHRISTI ARMY DEPOT FACILITIES ENGINEERING MANAGEMENT DIVISION	SHEET SIZE: "Arch D" SHEET REFERENCE: X-000 SHEET 1 of 1





CCAD Street Section



Summary

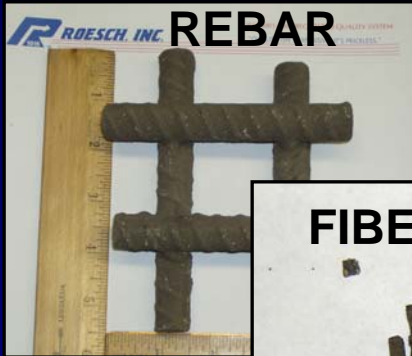
- The cement-glass interface produces a bond strength to the steel that is at least 3 to 4 times greater compared to bare steel alone
- The cement-glass enamel hydrates in the same way as conventional cement. Morphological and chemical changes in the cement embedded in the glass is consistent with conventional hydration
- Enameling is very effective in preventing corrosion. In testing corrosion has not been observed on the steel when the enamel is not purposely removed
- Bonding enamel potentially can be very useful in creating reinforced concrete with an improved composite character and improved corrosion resistance
- Work at CCAD will demonstrate the technology on a much larger scale, yielding real world load bearing and corrosion performance data



Bonding Enamel on Reinforcing Steel Has Many Applications



US Army Engineer Research & Development Center



- It can go into pre-cast or cast-in-place concrete
- It can be go onto steel decking for concrete floor construction
- Masonry anchors and “appliances” that have to bond to mortar can be enameled

MASONRY ANCHORS AND FITTINGS



One Corps, One Regiment, One Team . . . Serving Soldiers, the Army, the Nation



US Army Engineer Research & Development Center



One Corps, One Regiment, One Team . . . Serving Soldiers, the Army, the Nation