

State of the Art Reinforcement for Concrete Bridge Decks

Steven Sweeney
Orange Marshall
Vincent Hock

U.S. Army Corps of Engineers, Engineer Research and
Development Center,
Construction Engineering Research Laboratory
Champaign, IL

Phil Malone

U.S. Army Corps of Engineers, Engineer Research and
Development Center,
Geotechnical and Structures Laboratory
Vicksburg, MS



Report Documentation Page				Form Approved OMB No. 0704-0188	
Public reporting burden for the collection of information is estimated to average 1 hour per response, including the time for reviewing instructions, searching existing data sources, gathering and maintaining the data needed, and completing and reviewing the collection of information. Send comments regarding this burden estimate or any other aspect of this collection of information, including suggestions for reducing this burden, to Washington Headquarters Services, Directorate for Information Operations and Reports, 1215 Jefferson Davis Highway, Suite 1204, Arlington VA 22202-4302. Respondents should be aware that notwithstanding any other provision of law, no person shall be subject to a penalty for failing to comply with a collection of information if it does not display a currently valid OMB control number.					
1. REPORT DATE FEB 2009		2. REPORT TYPE		3. DATES COVERED 00-00-2009 to 00-00-2009	
4. TITLE AND SUBTITLE State of the Art Reinforcement for Concrete Bridge Decks				5a. CONTRACT NUMBER	
				5b. GRANT NUMBER	
				5c. PROGRAM ELEMENT NUMBER	
6. AUTHOR(S)				5d. PROJECT NUMBER	
				5e. TASK NUMBER	
				5f. WORK UNIT NUMBER	
7. PERFORMING ORGANIZATION NAME(S) AND ADDRESS(ES) U.S. Army Corps of Engineers,Engineer Research and Development Center,Construction Engineering Research Laboratory,Champaign,IL,61826-9005				8. PERFORMING ORGANIZATION REPORT NUMBER	
9. SPONSORING/MONITORING AGENCY NAME(S) AND ADDRESS(ES)				10. SPONSOR/MONITOR'S ACRONYM(S)	
				11. SPONSOR/MONITOR'S REPORT NUMBER(S)	
12. DISTRIBUTION/AVAILABILITY STATEMENT Approved for public release; distribution unlimited					
13. SUPPLEMENTARY NOTES 2009 U.S. Army Corrosion Summit, 3-5 Feb, Clearwater Beach, FL					
14. ABSTRACT					
15. SUBJECT TERMS					
16. SECURITY CLASSIFICATION OF:			17. LIMITATION OF ABSTRACT Same as Report (SAR)	18. NUMBER OF PAGES 20	19a. NAME OF RESPONSIBLE PERSON
a. REPORT unclassified	b. ABSTRACT unclassified	c. THIS PAGE unclassified			

Acknowledgements

- **Mr. Jay Schmidt – IMCOM, Ft. Knox, KY**
- **Mr. Bob Senzy - NX Infrastructure Limited**
- **Mr. Bill Geers – MMFX Steel Corporation**



Overview

- Background
- Reinforcements
 - MMFX 2
 - Nuovinox NX
- Ft. Knox Bridge Deck Projects
 - Culvert replacement
 - Mill Creek Bridge
- Summary



Background

- Deck corrosion is problematic and costly for vehicular bridges
- The Army alone has more than 1,500 bridges on its installations, with the majority having reinforced concrete decks
- FHWA Report RD-01-156 states that approximately one quarter of the direct cost of corrosion of bridges is maintenance and capital costs for concrete decks
- FHWA studies have also found that indirect costs to the user due to traffic delays, and lost productivity can be up to 10 times higher than the direct costs of repair and maintenance



Microcomposite Martensitic Ferretic Steel (MMFX 2)

- Initial proprietary technology developed at the University of California Berkeley by Professor Gareth Thomas
- Material composition resistant to corrosion

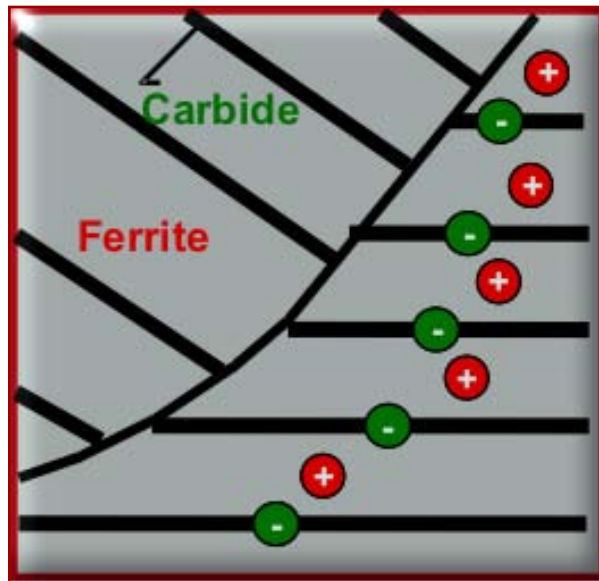


Courtesy MMFX

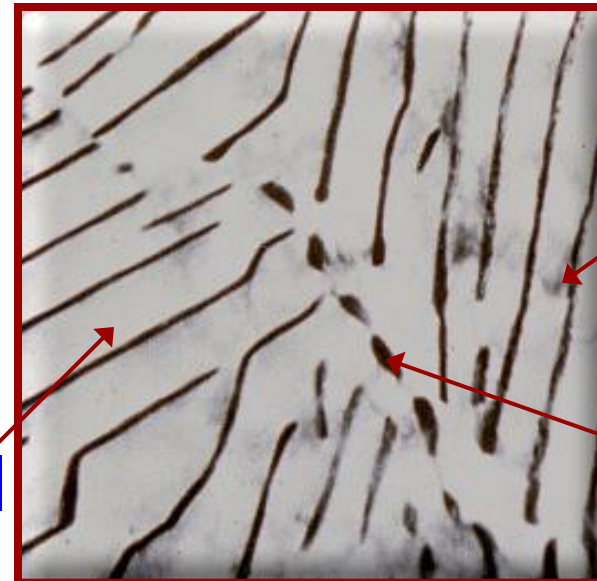


Corrosion of Pearlitic Steel

Schematic of Micro Galvanic Cells in the Ferrite-Iron Carbide Microstructure



Transmission Electron Microscope (TEM) Micrograph of the Ferrite – Iron Carbide Microstructure



Carbide
(Typical)

Grain
Boundary
with
Carbides

Ferrite

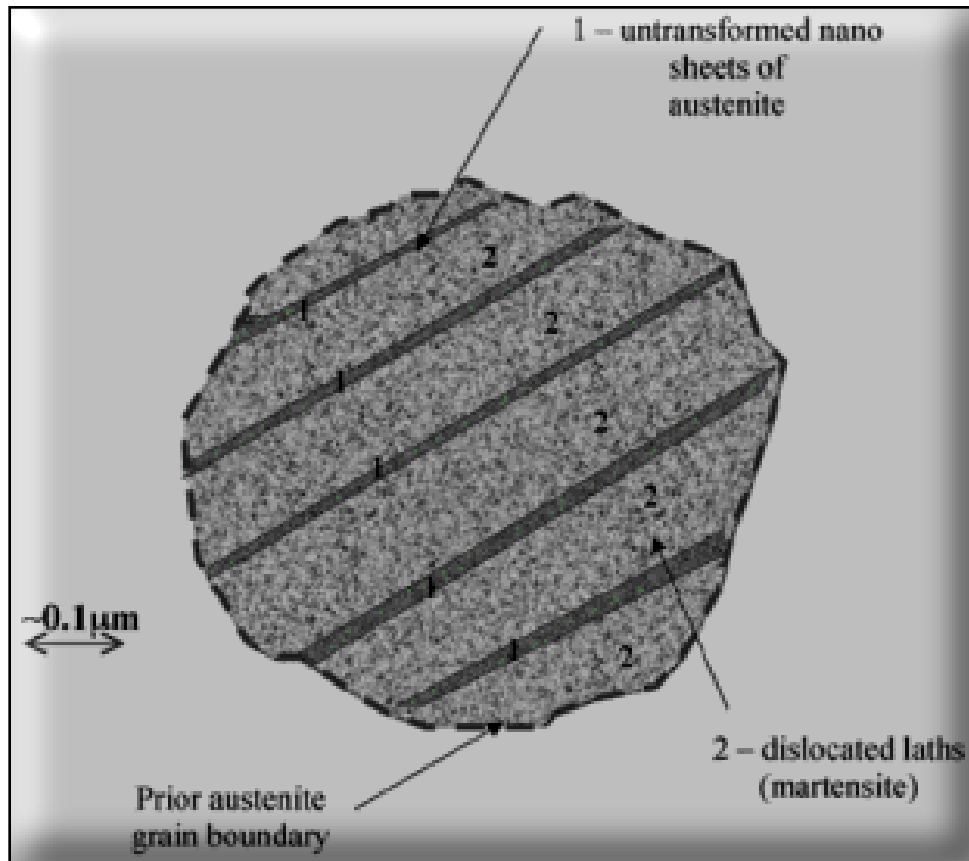
*Microgalvanic Cell Formation
Between Iron-Carbide and Ferrite
Phases*



*Corrosion Can Be Minimized By
Avoiding Microgalvanic Cell
Formation*



Microcomposite Steel



Microcomposite Steels, Packet Lath Martensite

Dislocated laths of martensite enveloped
by stable retained
austenite films

**CARBIDE FREE
MICROSTRUCTURE**
to Eliminate Formation of
Microstructural Galvanic Cells



Mechanical Properties

MMFX 2

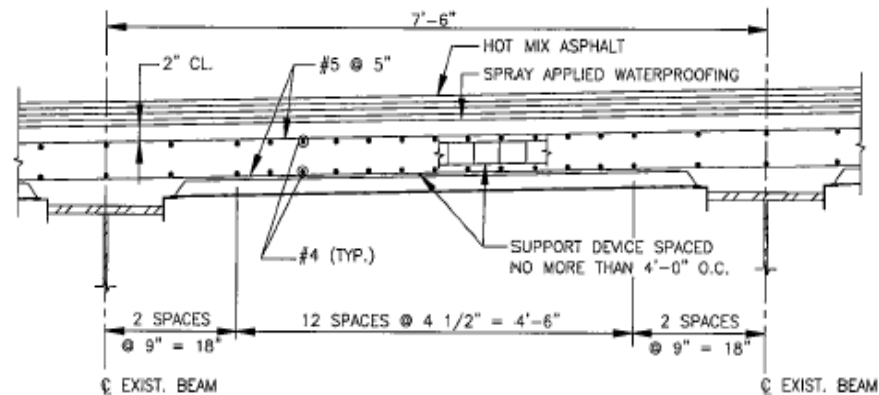
- Mechanical
 - $s_{y(0.2\%)} > 100 \text{ ksi (690 MPa)}$
 - $s_T > 150 \text{ ksi (1,030 MPa)}$
 - $e > 7\%$
- Conforms to ASTM C 035A/1035M-04 for concrete reinforcement



Advantage of Higher Strength

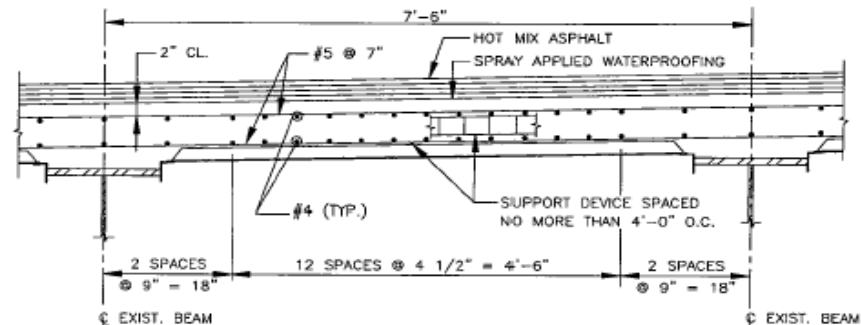
Typical Grade
60 Design

DECK SECTION WITH GRADE 60 REINFORCEMENT:



Design
with 75 ksi limit
(20% Less Steel)

DECK SECTION WITH GRADE 75 REINFORCEMENT:



NOTES:

1. ROADWAY DECK SLAB SHALL BE 4000 PSI-3/4"-565 LB HP CEMENT CONCRETE.
2. #4 LONGITUDINAL REINFORCEMENT SHALL BE PLACED PARALLEL TO THE ϵ OF CONSTRUCTION.
#5 MAIN REINFORCEMENT SHALL BE PLACED PERPENDICULAR TO THE ϵ OF CONSTRUCTION.
3. ALL REINFORCEMENT AND SUPPORTING DEVICES SHALL BE MMFX 2 STEEL.

Courtesy MMFX



US Army Corps
of Engineers

Engineer Research and Development Center

Corrosion Resistance

- MMFX 2 rebar's corrosion resistance has been reported at between 5 and 6 times that of conventional A615 rebar
- MMFX 2 rebar's corrosion rate has been reported to be between 1/3 and 2/3 that of conventional A615 rebar
- MMFX 2 rebars have expected 75+ years service life



Nuovinox NX-SCR

- 316L Stainless steel cladding with carbon steel core
- Patented “green” process bonds stainless steel to carbon steel
- Optimizes stainless steel’s very high corrosion resistance with the mechanical properties and elastic modulus characteristics of low alloy carbon steel
- Half the cost of stainless steel reinforcement while providing comparable strength and corrosion resistance



Manufacturing Process



Properties NX-SCR

- Produced in 1/8 in. diameter increments ranging from a #4 through to a #10
- Stainless Steel thickness between .014 and .035 in. (2 to 7 times the minimum .007 in. requirement for ss clad rebar)
- Standard length: 39.5 ft
- Nuovinox stainless clad rebar conforms to AASTO MP13 (this code is based on ASTM A955 and ASTM A615)



Corrosion Resistance NX-SCR

- Compatible with 316L Stainless Steel
- High service life (>100 years)
 - Epoxy coated rebar corrosion life between 20 and 40 years
 - Based on bridge model assuming surface chloride concentration of 26 lb/yd³
- Expected to remain corrosion free at chloride concentrations up to 15 lb/yd³



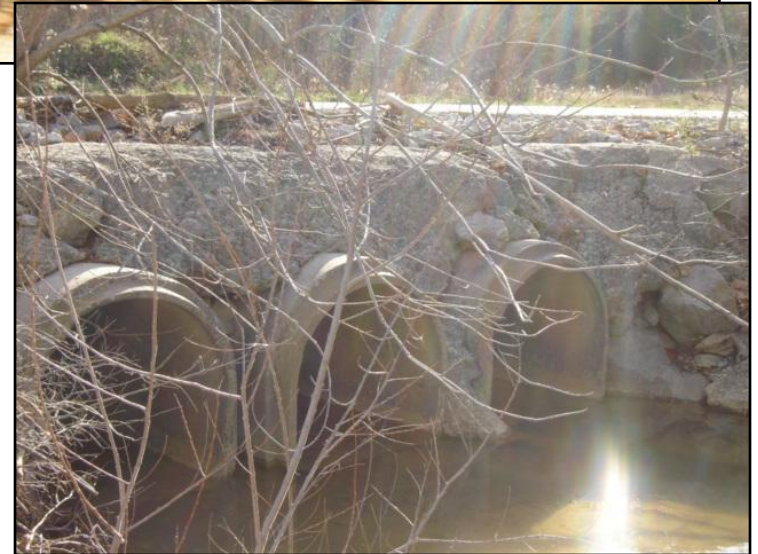
Bridge Deck Replacement Ft. Knox, KY

- Replacement of two bridge decks where road salts are used for de-icing
- One of two types of state-of-the-art corrosion resistant reinforcement, MMFX 2 and Nuovinox NX-SCR, will be used at each bridge
- Installation of each type of rebar at nearly identical locations will allow for a side-by-side comparison and evaluation of the rebar performance
- Data will be collected for multiple years to monitor corrosion
- Life expectancy of both types of rebar is expected to exceed 75 years



Fort Knox Culvert Bridge

- Tanks and regular vehicular traffic use this bridge
- Slated to be replaced in the near future with a single-span bridge
- Subjected to de-icing salts



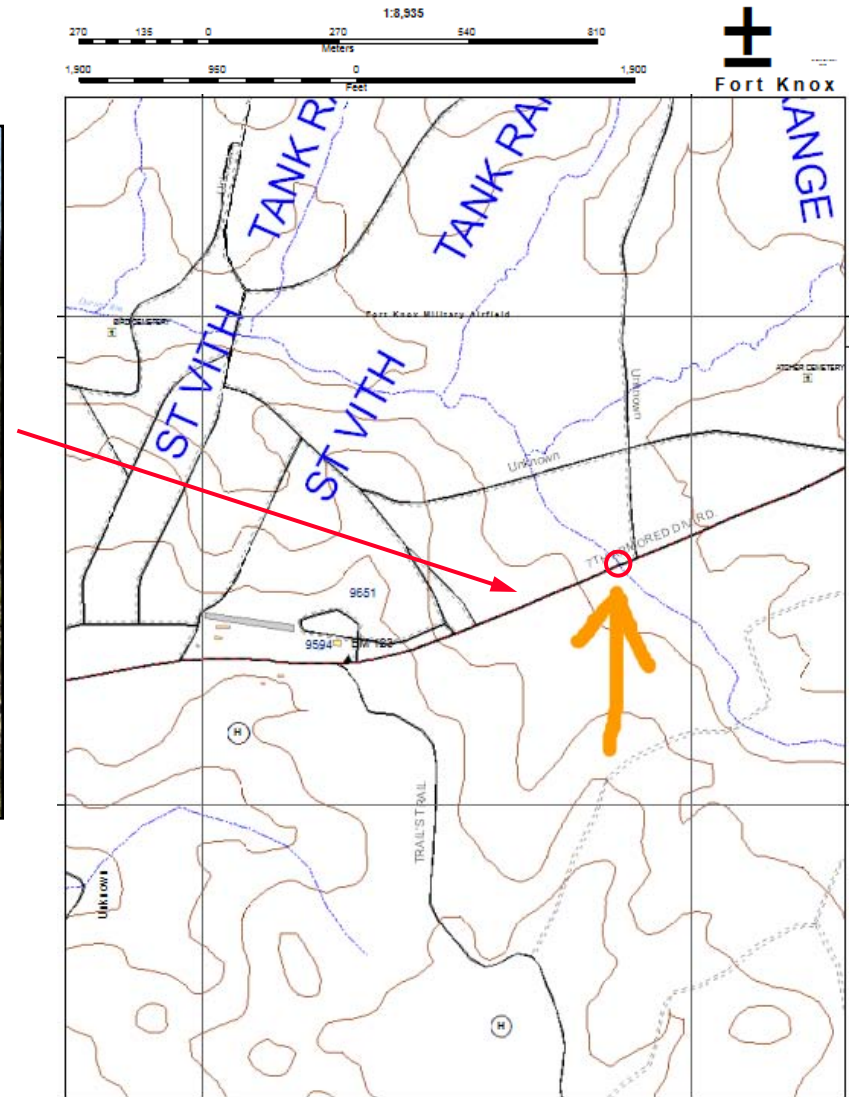
Location



- Culvert Replacement



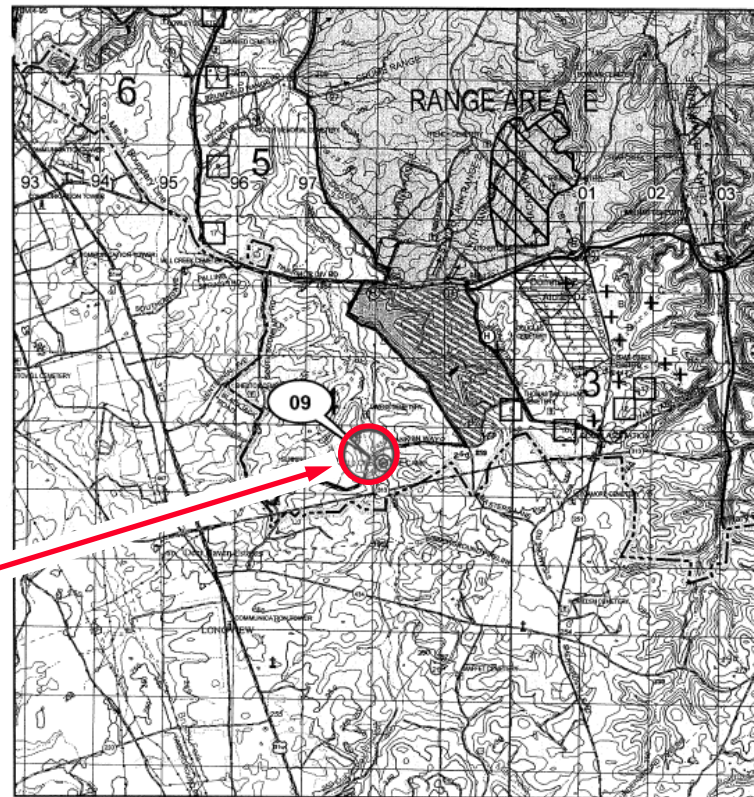
US Army Corps
of Engineers



Engineer Research and Development Center

Bridge Over Mill Creek

- Two lane bridge, wooden deck
- Total replacement including a concrete deck



Product

- Positive results observed as part of this project will result in recommended changes in ACSIM's Installation Design Standards
- Results will also be presented to ACI, ASCE, and ASSHTO



Summary

- Single-span bridges to be constructed in Fort Knox, KY will test longevity and durability of two types of rebar
- MMFX 2 is a novel reinforcing steel; a low in carbon, chromium, microcomposite steel that conforms to ASTM C 1035A/1035M-04 for concrete reinforcement
- Nuovinox is a type of long-term rebar that consists of stainless steel cladding with a carbon steel core, providing similar properties to stainless steel rebar at a reduced cost
- These two state-of-the-art reinforcing bars have the potential to reduce initial costs, increase the lifespan of bridge decks and reduce maintenance costs due to corrosion of rebar

