

Intragenomic rDNA ITS2 Variation in the Neotropical *Anopheles* (*Nyssorhynchus*) *albitarsis* Complex (Diptera: Culicidae)

CONG LI AND RICHARD C. WILKERSON

From the Department of Entomology, Walter Reed Army Institute of Research, 503 Robert Grant Avenue, Silver Spring, MD 20910-7500.

Address correspondence to Dr. R. C. Wilkerson, Smithsonian Institution, Museum Support Center, 4210 Silver Hill Road, Suitland, MD 20746, or e-mail: wilkersonr@si.edu.

Abstract

We cloned and sequenced the rDNA internal transcribed spacer 2 (ITS2) of 4 species belonging to the neotropical *Anopheles* (*Nyssorhynchus*) *albitarsis* complex, that is, *A. albitarsis*, *A. albitarsis* B; *Anopheles marajoara*, a proven malaria vector; and *Anopheles deaneorum*, a suspected vector. Even though the ITS2 sequences of these species were very similar ($\leq 1.17\%$ divergence), we found differences suitable for species identification and intragenomic variation of possible consequence in phylogenetic reconstruction. Variation came from 2 microsatellite regions and a number of indels and base substitutions. The existence of partially correlated subsets of clones in *A. albitarsis* is hypothesized either to be separate rDNA loci or to be semi-independently evolving portions of a single rDNA locus. No differences were found between males and females, suggesting that similar rDNA arrays exist on both the X and Y chromosomes. In addition, highly variant clones, possibly pseudogenes, were found in *A. marajoara* from Venezuela.

Concerted evolution is the process where all members of a multigene family are converted to the same sequence. The mechanism of concerted evolution has been attributed to either unequal crossing over or gene conversion (Smith 1976; Zimmer et al. 1980; Dover 1982). The rDNA is a multigene family that exists as one or more tandem arrays of many transcriptional units per cell (Gerbi 1985), where concerted evolution rapidly spreads mutations to all members of the gene family, even if arrays are located on different chromosomes (Dover 1982; Gerbi 1985; Tautz et al. 1988). In mosquitoes, each rDNA transcriptional unit is composed of an external transcribed spacer, an 18S subunit, an internal transcribed spacer 1 (ITS1), a 5.8S subunit, an ITS2, and a 28S subunit. The rDNA units within an array are linked to each other by an intergenic spacer (IGS). The transcribed spacers are thought to contain conserved structures important in forming the mature ribosomal amplicon (Gerbi 1985; Thweatt and Lee 1990; Wesson et al. 1992; Paskewitz et al. 1993; van Nues et al. 1995). The rDNA sequence is a valuable source of information because the functional regions that produce the ribosomes are highly conserved but the transcribed and nontranscribed spacers have high interspecific and low intraspecific variability, making them useful for explaining relationships of recently diverged species and also

useful as a basis for polymerase chain reaction (PCR) identification of morphologically similar species. As such, ITS1 and ITS2 have been used extensively in phylogenetic reconstruction of closely related and cryptic species complexes, as well as in the development of diagnostic species-specific PCR-based markers. However, because PCR can amplify all sequences of ITS present within the genome, variation among ITS sequences within individuals or species could result in inaccurate phylogenies and erroneous markers for species diagnostics. Consequently, identifying and quantifying levels of intragenomic and intraspecific variation among ITS sequences are of real importance.

The mosquito genus *Anopheles* (443 formally named species) contains all the vectors of human malaria parasites. Because many of the primary vectors belong to cryptic species complexes, it is necessary to have accurate phylogenetic reconstructions and species diagnostics for the study of malaria transmission and its relation to *Anopheles* evolution. Sequences of ITS1 and ITS2 are an excellent source for such information. However, in *Anopheles*, there are examples of rDNA intragenomic variation (Wilkerson et al. 2004; Fairley et al. 2005), but its prevalence and magnitude is not well studied. A consideration in search of an explanation for *Anopheles* intragenomic rDNA sequence variation is the possibility that

Report Documentation Page

Form Approved
OMB No. 0704-0188

Public reporting burden for the collection of information is estimated to average 1 hour per response, including the time for reviewing instructions, searching existing data sources, gathering and maintaining the data needed, and completing and reviewing the collection of information. Send comments regarding this burden estimate or any other aspect of this collection of information, including suggestions for reducing this burden, to Washington Headquarters Services, Directorate for Information Operations and Reports, 1215 Jefferson Davis Highway, Suite 1204, Arlington VA 22202-4302. Respondents should be aware that notwithstanding any other provision of law, no person shall be subject to a penalty for failing to comply with a collection of information if it does not display a currently valid OMB control number.

1. REPORT DATE 2006		2. REPORT TYPE		3. DATES COVERED 00-00-2006 to 00-00-2006	
4. TITLE AND SUBTITLE Intragenomic rDNA ITS2 Variation in the Neotropical Anopheles (Nyssorhynchus) albitarsis Complex (Diptera: Culicidae)				5a. CONTRACT NUMBER	
				5b. GRANT NUMBER	
				5c. PROGRAM ELEMENT NUMBER	
6. AUTHOR(S)				5d. PROJECT NUMBER	
				5e. TASK NUMBER	
				5f. WORK UNIT NUMBER	
7. PERFORMING ORGANIZATION NAME(S) AND ADDRESS(ES) Walter Reed Army Institute of Research, Department of Entomology, Silver Spring, MD, 20910				8. PERFORMING ORGANIZATION REPORT NUMBER	
9. SPONSORING/MONITORING AGENCY NAME(S) AND ADDRESS(ES)				10. SPONSOR/MONITOR'S ACRONYM(S)	
				11. SPONSOR/MONITOR'S REPORT NUMBER(S)	
12. DISTRIBUTION/AVAILABILITY STATEMENT Approved for public release; distribution unlimited					
13. SUPPLEMENTARY NOTES					
14. ABSTRACT see report					
15. SUBJECT TERMS					
16. SECURITY CLASSIFICATION OF:			17. LIMITATION OF ABSTRACT	18. NUMBER OF PAGES	19a. NAME OF RESPONSIBLE PERSON
a. REPORT unclassified	b. ABSTRACT unclassified	c. THIS PAGE unclassified			

rDNA arrays are linked to different sex chromosomes, that is, they have been found only on the X of some species (Collins et al. 1989) or on both the X and Y of others (Marchi and Pili 1994). Consequently, rDNA arrays on sex chromosomes that exhibit limited recombination could result in incomplete homogenization.

In this study, we examine ITS sequences from multiple individuals of 4 closely related species of the neotropical *Anopheles albitarsis* complex. These include *Anopheles marajoara* Galvão & Damesceno (Brazil, Venezuela, Colombia, and southern Central America), a known carrier of malaria (Conn et al. 2002); *Anopheles deaneorum* Rosa-Freitas (northern Argentina to western Brazil), a suspected malaria vector (Klein, Lima, and Tada 1991; Klein, Lima, Tada, and Miller 1991); and 2 other species *A. albitarsis* Lynch-Arribalzaga (southern Brazil, northern Argentina, and Paraguay) and *A. albitarsis* B (south, central, and eastern Brazil), whose role in malaria transmission is unclear. The 4 species can be reliably separated by random amplified polymorphic DNA (RAPD) (Wilkerson, Gaffigan, and Lima 1995; Wilkerson, Parsons, et al. 1995) and white gene (Merritt et al. 2005). We initially sought to examine the phylogenetic relationships among these species employing a number of genes, including ITS2 and cytochrome oxidase I (CO1) (Wilkerson et al. 2005). We observed ambiguous results from direct sequencing; thus, we sought to clone and sequence ITS2 sequences from these species to quantify the magnitude and prevalence of intragenomic ITS2 variation and determine its effect on phylogenetic reconstruction. In addition, we sampled both male and female individuals within each species to investigate possible rDNA gender differences.

Materials and Methods

Taxon Sampling

Morphological identification of *A. albitarsis* s.l. was carried out using characters found in Linthicum (1988) and Peyton et al. (1992). Specimens used for cloning and sequencing are given in Table 1. They represent examples from progeny broods reported in Wilkerson, Gaffigan, and Lima (1995) and Wilkerson, Parsons, et al. (1995) from widely separated parts of the species ranges, including type localities of the 3 named species, and both sexes. In addition, a larger sample of *A. marajoara* is represented because of its wide distribution and the possibility of a cryptic species, *A. albitarsis* E (Lehr et al. 2005). For brevity, letter designations are sometimes used that follow those in Wilkerson, Gaffigan, and Lima (1995) and Wilkerson, Parsons, et al. (1995): A = *A. albitarsis*, B = *A. albitarsis* B, C = *A. marajoara*, D = *A. deaneorum*, for example, in Tables 1–3. The ITS2 sequence reported here was used to design diagnostic primers (Li and Wilkerson 2005) that correctly identified all specimens first recognized with RAPD markers (Wilkerson, Gaffigan, and Lima 1995; Wilkerson, Parsons, et al. 1995) as follow: *A. albitarsis*, $n = 56$; *A. marajoara*, $n = 407$; *A. deaneorum*, $n = 41$; and *A. albitarsis* B, $n = 56$. Because there was complete concordance of data sets for a relatively large sample from many

locations, we were able to base our conclusions on a much smaller number of cloned individuals.

DNA Processing

DNA was isolated from individual adult mosquitoes by phenol–chloroform extraction as described in Wilkerson et al. (1993). The ITS2 region was amplified using PCR primers based on conserved sequences in the 5.8S and 28S ribosomal subunits of *A. quadrimaculatus* Say (Cornel et al. 1996). The boundaries of the ITS2 were determined as in Cornel et al. (1996, Figure 1A). PCRs were carried out as described in Li and Wilkerson (2005). Amplified PCR products were cleaned using QIAquick PCR purification kit (Promega, Madison, WI). About 200 ng of each purified PCR product was ligated into pCR-TOPO plasmid (Invitrogen, Carlsbad, CA). Two microliters of the ligation reaction mixture was then transformed into competent One Shot cells (TOPO TA Cloning Kit, Invitrogen). Transformed cultures were plated on Luria-Bertani plates containing 5-bromo-4-chloro-3-indolyl-beta-D-galactopyranoside, isopropyl-beta-D-thiogalactopyranoside, and 50 µg/ml ampicillin. Successful insertions are confirmed by PCR. Plasmids were extracted by the mini-prep method (Sambrook et al. 1989). Sequencing and alignment were as described in Li et al. (2005). Sequence statistics were obtained using PAUP version 4.0b4 (Swofford 1998). GenBank accession numbers are given on Table 2.

Genetic Distance and Phylogenetic Analysis

Uncorrected “ p ” pairwise distances were calculated by PAUP version 4.0b10 (Swofford 1998). The aligned ITS2 sequences were analyzed by maximum parsimony (MP) as implemented in PAUP and Bayesian analysis carried out using MRBAYES 3.1 (Huelsenbeck and Ronquist 2001). The parsimony and Bayesian analyses were chosen because gap information can be incorporated into both. Each gap was treated as a single character regardless of the length of the gap, under the assumption that a given gap is a result from one mutational event (Simmons and Ochoterena 2000). Single unique mutations were disregarded because of the possibility that they were the result of *Taq* replication error. Parsimony analysis was conducted using the heuristic search option with TBR (tree-bisection-reconnection) branch-swapping algorithm. Parsimony bootstrapping was done with 1000 pseudoreplicates with 10 random taxon addition replicates per pseudoreplicate. For Bayesian analysis, we used MRMODELTEST 2.2 (Nylander 2004) to choose an input evolutionary model. Markov chain Monte Carlo runs were 2×10^6 generations long with sampling every 5×10^3 generations, for a total of 4001 samples. Of these, the first 1001 were discarded as burn-in, which is well past the point where the likelihood plot reached a plateau.

RNA Secondary Structure

The putative secondary structure of the ITS2 was estimated using MFOLD (Zuker et al. 1999). A t -distribution was

Table 1. Collection localities, number of clones, and GenBank accession numbers for specimens used in cloning of rDNA ITS2 of species belonging to the *Anopheles (Nyssorhynchus) albitarsis* complex

Species (M = male, F = female)	Code	Country	State	Locality	Coordinates
<i>albitarsis</i> (A1)	BR504(8)	Brazil	Paraná	Near Guaira	24°04'S, 54°15'W
<i>albitarsis</i> (AM2, AF2)	AR7(8)	Argentina	Buenos Aires	Baradero (type locality)	33°48'S, 59°30'W
<i>albitarsis</i> B (B1)	BR019(12)	Brazil	Ceará	Paraipaba	3°25'S, 39°13'W
<i>albitarsis</i> B (BM2, BF2)	BR/SP 500(1)	Brazil	São Paulo	Near Registro	24°37'S, 47°53'W
<i>marajoara</i> (C1)	BR026(12)	Brazil	Amazonas	Manaus	2°53'S, 60°15'W
<i>marajoara</i> (CF2, CM2)	BR/R001(10)	Brazil	Pará	Marajó Island (type locality)	1°00'S, 49°30'W
<i>marajoara</i> (C3)	COJ9	Venezuela	Cojedes	Finca "Rosa Blanca"	Not known
<i>marajoara</i> (C4)	COJ10	Venezuela	Cojedes	Finca "Rosa Blanca"	Not known
<i>marajoara</i> (C5)	BR4	Brazil	Roraima	Boa Vista	2°45'28"N, 60°42'18"W
<i>marajoara</i> (C6)	PIS9	Brazil	Amapá	North of Amapá	Not known
<i>marajoara</i> (C7)	ITB13763	Brazil	Pará	Near Itaituba	Not known
<i>deaneorum</i> (D1)	BR/R007(15)	Brazil	Rondônia	Guajará Mirim	10°50'S, 65°20'W
<i>deaneorum</i> (DF2, DM2)	AR3(4)	Argentina	Corrientes	Corrientes	27°28'S, 59°50'W
<i>deaneorum</i> (DF3)	AR2(3)	Argentina	Corrientes	90 km West of Posadas	Not known

Letter designations, A1, A2, etc, correspond to Table 3.

calculated to compare the minimum free energy levels of all clones given by MFOLD (Sokal and Rohlf 1981).

Results

We cloned ITS2 PCR products from each sex of *A. albitarsis* ($n = 3$), *A. albitarsis* B ($n = 3$), *A. deaneorum* ($n = 4$), and *A. marajoara* ($n = 8$). Individuals from widely separated localities, including type localities, were used as described above and in Table 1. The larger sample of *A. marajoara* served to test for consistency of sequence in this widely distributed species and to test the hypothesis of the fifth species (Lehr et al. 2005). The number of clones from the 18 total individuals ranged from 3 to 28 (Table 2), giving a total of 217 clones. Alignment of sequences was straightforward because there was little sequence variation. Unless otherwise stated, the following description does not apply to 2 variant *A. marajoara* clones, C3.1 and C4.1, from individuals COJ9 and COJ10 from Cojedes, Venezuela (Tables 1 and 2), which we discuss separately.

Inter- and Intra-genomic Variation

Total length of the ITS2 ranged from 344 to 365 bp. There were 4 microsatellite regions, (GT)₅₋₇ at position 118, (GA)₃₋₁₁ at 273, (CT)₄ at 147, and (GC)₃ at 345, all of which were common to all 4 species (Table 2). The first 2 regions were variable and contributed to all the length and intragenomic variations of ITS2 within *A. albitarsis* B and *A. deaneorum*. However, repeat number was not species specific. There were 3 interspecific and/or intraspecific 2- or 3-base indels at positions 34, 271, and 236 and 8 single-base substitutions at positions 30, 43, 80, 248, 260, 268, 276, and 328.

The polymorphic ACC and GC indels in *A. albitarsis* occurred concordantly in clones from 2 individuals in about equal proportions, 5 of 15 in specimen A1 and 5 of 20 in specimen AM2. The third individual of *A. albitarsis* (AF2) also had a low proportion of ACC indel clones (1 of 21), but the

GC indel was not present in our sample. There was no indication of any obvious correlation of the other 2 polymorphic sites (positions 43 and 328) in this species with each other or the ACC and GC indels.

Phylogenetic Analysis

MP and Bayesian analyses were carried out for clones from 3 individuals of each species with the microsatellite regions removed and indels coded as 0 or 1 (Simmons and Ochoterena 2000). For clarity, because the combined and separate results were nearly identical, we present results from a single individual (Figure 1) of each species. Tree topology was the same for both analyses, but branch support was better with Bayesian analysis (support for both shown in Figure 1). *Anopheles deaneorum*, *A. marajoara*, and *A. albitarsis* B all clustered into separate groups. However, *A. albitarsis* clones separated into 2 groups corresponding to the correlated and partially correlated ACC and GC indels described above. Variation among clones was slight, with intragenomic base differences ranging from 0.0% to 0.57%, intraspecific variation ranging from 0.0% to 0.60%, and interspecific variation ranging from 0.28% to 1.17% (Table 3).

Additional *A. marajoara* Clones

Twenty-six clones from 3 individuals representing *A. albitarsis* E of Lehr et al. (2005) were sequenced, 1 from Boa Vista in northern Brazil and 2 from Venezuela. Except for rare mutations, sequences of these clones matched sequences from other collection sites, including the type locality of *A. marajoara*, Marajó Island, Brazil (Table 2).

Variant *A. marajoara* Clones

Significant divergence was seen in a single clone from 2 individuals, COJ9 (clone C3.1) and COJ10 (clone C4.1), from Cojedes, Venezuela. These sequences were similar to each other but quite different from all other clones (Table 2).

Table 2. The rDNA ITS2 sequences that differ among *Anopheles albitalaris* complex species

Specimen No.	Ratio	Position																												Initial dG (kcal/mole) ^a	Allele name	GenBank Accession No.		
		30	35	43	57	64	80	110	118	120	129	131	171	181	207	213	236-238	248	250	258	260	268	269-270	271-272	276	273-294	323	326, 327	328				338	344
A1.1	3/15	T	-	C	G	T	G	G	G	G	T	(GT) ₆	C	A	G	G	ACC	G	C	G	C	T	GG	GC	A	(GA) ₇	C	AC	G	G	A	-185.0	a1	AY828321
A1.2	2/15	T	-	T	G	T	G	G	G	G	T	(GT) ₇	C	A	G	G	ACC	G	C	G	C	T	GG	GC	A	(GA) ₇	C	AC	G	G	A	-182.2	a2	AY828320
A1.3	9/15	T	-	T	G	T	G	G	G	G	T	(GT) ₇	C	A	G	G	-	G	C	G	C	T	GG	-	A	(GA) ₇	C	AC	A	G	A	-185.5	a3	AY828322
A1.4	1/15	T	-	T	G	T	G	G	G	G	T	(GT) ₆	C	A	G	G	-	G	C	G	C	T	GG	-	A	(GA) ₇	C	AC	A	G	A	-185.5	a4	AY828323
AM2.1	4/20	T	-	C	G	T	G	G	G	G	T	(GT) ₆	C	A	G	G	ACC	G	C	G	C	T	GG	GC	A	(GA) ₇	C	AC	G	G	A	-185.0	a1	AY828321
AM2.2	1/20	T	-	C	G	T	G	G	G	G	T	(GT) ₆	C	A	G	G	ACC	G	C	G	C	T	GG	GC	A	(GA) ₆	C	AC	A	G	A	-181.5	a5	AY828335
AM2.3	15/20	T	-	T	G	T	G	G	G	G	T	(GT) ₇	C	A	G	G	-	G	C	G	C	T	GG	-	A	(GA) ₇	C	AC	A	G	A	-185.5	a6	AY828336
AF2.1	20/21	T	-	T	G	T	G	G	G	G	T	(GT) ₇	C	A	G	G	-	G	C	G	C	T	GG	-	A	(GA) ₇	C	AC	A	G	A	-185.5	a3	AY828322
AF2.2	1/21	T	-	C	G	T	G	G	G	G	T	(GT) ₆	C	A	G	G	ACC	G	C	G	C	T	GG	-	A	(GA) ₆	C	AC	G	A	A	-181.5	a7	DQ077807
B1.1	7/10	T	-	C	G	T	G	G	G	G	T	(GT) ₆	C	A	G	G	ACC	A	C	G	A	T	GG	-	A	(GA) ₇	C	AC	A	G	A	-179.7	b1	AY828324
B1.2	1/10	T	-	C	G	T	G	G	G	G	T	(GT) ₅	C	A	G	G	ACC	A	C	G	A	T	GG	-	A	(GA) ₇	C	AC	A	G	A	-176.7	b2	AY828325
B1.3	1/10	T	-	C	G	T	G	G	G	G	T	(GT) ₆	C	A	G	G	ACC	A	C	G	A	T	GG	-	A	(GA) ₈	C	AC	A	G	A	-180.0	b3	AY828326
B1.4	1/10	T	-	C	G	T	G	G	G	G	T	(GT) ₆	C	A	G	G	ACC	A	C	G	A	T	GG	-	A	(GA) ₅	C	AC	A	G	A	-179.3	b4	AY828327
BF2.1	9/10	T	-	C	G	T	G	G	G	G	T	(GT) ₆	C	A	G	G	ACC	A	C	G	A	T	GG	-	A	(GA) ₇	C	AC	A	G	A	-179.7	b1	AY828324
BF2.2	1/10	T	-	C	G	T	G	G	G	G	T	(GT) ₆	C	A	G	G	ACC	A	C	G	A	T	GG	-	A	(GA) ₆	C	AC	A	G	A	-180.0	b3	AY828326
BM2.1	17/18	T	-	C	G	T	G	G	G	G	T	(GT) ₆	C	A	G	G	ACC	A	C	G	A	T	GG	-	A	(GA) ₇	C	AC	A	G	A	-179.7	b1	AY828324
BM2.2	1/18	T	-	C	G	T	G	G	G	G	T	(GT) ₆	C	A	G	G	ACC	A	C	G	A	T	GG	-	A	(GA) ₈	C	AC	A	G	A	-180.0	b3	AY828326
C1.1	14/15	T	CC	C	G	T	A	G	G	G	T	(GT) ₆	C	A	G	G	-	G	C	G	C	T	GG	-	G	(GA) ₆	C	AC	G	G	A	-178.3	c1	AY828328
C1.2	1/15	T	CC	C	G	T	A	G	G	G	T	(GT) ₆	C	A	G	G	-	G	C	G	C	A	GG	-	A	(GA) ₇	C	AC	G	G	A	-176.5	c2	AY828329
CF2.1	2/9	T	CC	C	G	T	A	G	G	G	T	(GT) ₇	C	A	G	G	-	G	C	G	C	A	GG	-	A	(GA) ₇	C	AC	G	G	A	-178.7	c3	AY828339
CF2.2	7/9	T	CC	C	G	T	A	G	G	G	T	(GT) ₆	C	A	G	G	-	G	C	G	C	T	GG	-	G	(GA) ₆	C	AC	G	G	A	-178.3	c1	AY828328
CM2.1	21/28	T	CC	C	G	T	A	G	G	G	T	(GT) ₆	C	A	G	G	-	G	C	G	C	T	GG	-	G	(GA) ₆	C	AC	G	G	A	-178.3	c1	AY828328
CM2.2	1/28	T	CC	C	G	T	A	G	G	G	T	(GT) ₅	C	A	G	G	-	G	C	G	C	T	GG	-	G	(GA) ₆	C	AC	G	G	A	-175.6	a4	DQ077808
CM2.3	6/28	T	CC	C	G	T	A	G	G	G	T	(GT) ₇	C	A	G	G	-	G	C	G	C	A	GG	-	A	(GA) ₇	C	AC	G	G	A	-178.7	c3	AY828339
C3.1	1/8	T	CC	C	A	-	A	A	A	A	T	(GT) ₁	T	C	C	A	-	G	T	T	C	T	-	-	A	(GA) ₄	T	TT	A	T	G	-164.3	-c5	AY828344
C3.2	7/8	T	CC	C	G	T	A	G	G	G	T	(GT) ₆	C	A	G	G	-	G	C	G	C	T	GG	-	A	(GA) ₆	C	AC	G	G	A	-177.2	a6	AY828345
C4.1	1/4	T	CC	C	G	T	A	G	G	G	T	(GT) ₅	C	A	C	A	-	G	T	T	C	T	-	-	A	(GA) ₄	T	TT	A	T	G	-169.5	c7	AY828346
C4.2	3/4	T	CC	C	G	T	A	G	G	G	T	(GT) ₆	C	A	G	G	-	G	C	G	C	T	GG	-	A	(GA) ₆	C	AC	G	G	A	-177.2	a8	AY828347
C5.1	2/4	T	CC	C	G	T	A	G	G	G	T	(GT) ₇	C	A	G	G	-	G	C	G	C	T	GG	-	A	(GA) ₆	C	AC	G	G	A	-179.0	a9	AY828348
C5.2	1/4	T	CC	C	G	T	A	G	G	G	T	(GT) ₆	C	A	G	G	-	G	C	G	C	T	GG	-	A	(GA) ₆	C	AC	G	G	A	-177.2	a6	AY828345
C5.3	1/4	T	CC	C	G	T	A	G	G	G	T	(GT) ₇	C	A	G	G	-	G	C	G	C	A	GG	-	A	(GA) ₇	C	AC	G	G	A	-178.7	c3	AY828339
C6.1	1/7	T	CC	C	G	T	A	G	G	G	T	(GT) ₇	C	A	G	G	-	G	C	G	C	T	GG	-	A	(GA) ₆	C	AC	G	G	A	-179.0	a9	AY828348
C6.2	1/7	T	CC	C	G	T	A	G	G	G	T	(GT) ₇	C	A	G	G	-	G	C	G	C	A	GG	-	A	(GA) ₇	C	AC	G	G	A	-178.7	c3	AY828339
C6.3	5/7	T	CC	C	G	T	A	G	G	G	T	(GT) ₆	C	A	G	G	-	G	C	G	C	T	GG	-	A	(GA) ₆	C	AC	G	G	A	-177.2	a6	AY828345
C7.1	3/3	T	CC	C	G	T	A	G	G	G	T	(GT) ₇	C	A	G	G	-	G	C	G	C	A	GG	-	A	(GA) ₇	C	AC	G	G	A	-178.7	c3	AY828339
D1.1	4/11	C	CC	C	G	T	G	G	G	G	T	(GT) ₆	C	A	G	G	ACC	G	C	G	C	T	GG	-	A	(GA) ₆	C	AC	G	G	A	-182.4	d1	AY828330
D1.2	1/11	C	CC	C	G	T	G	G	G	G	T	(GT) ₆	C	A	G	G	ACC	G	C	G	C	T	GG	-	A	(GA) ₄	C	AC	G	G	A	-180.3	d2	AY828331
D1.3	5/11	C	CC	C	G	T	G	G	G	G	T	(GT) ₆	C	A	G	G	ACC	G	C	G	C	T	GG	-	A	(GA) ₅	C	AC	G	G	A	-178.6	d3	AY828332
D1.4	1/11	C	CC	C	G	T	G	G	G	G	T	(GT) ₆	C	A	G	G	ACC	G	C	G	C	T	GG	-	A	(GA) ₁₁	C	AC	G	G	A	-183.4	d4	AY828333
DF2.1	10/14	C	CC	C	G	T	G	G	G	G	T	(GT) ₆	C	A	G	G	ACC	G	C	G	C	T	GG	-	A	(GA) ₆	C	AC	G	G	A	-182.4	d1	AY828330
DF2.2	4/14	C	CC	C	G	T	G	G	G	G	T	(GT) ₆	C	A	G	G	ACC	G	C	G	C	T	GG	-	A	(GA) ₅	C	AC	G	G	A	-178.6	d3	AY828332
DM2.1	6/12	C	CC	C	G	T	G	G	G	G	T	(GT) ₆	C	A	G	G	ACC	G	C	G	C	T	GG	-	A	(GA) ₆	C	AC	G	G	A	-182.4	d1	AY828330
DM2.2	6/12	C	CC	C	G	T	G	G	G	G	T	(GT) ₆	C	A	G	G	ACC	G	C	G	C	T	GG	-	A	(GA) ₅	C	AC	G	G	A	-178.6	d3	AY828332
DF3.1	1/8	C	CC	C	G	T	G	G	G	G	T	(GT) ₆	C	A	G	G	ACC	G	C	G	C	T	GG	-	A	(GA) ₆	C	AC	G	G	A	-182.4	d1	AY828330
DF3.2	3/8	C	CC	C	G	T	G	G	G	G	T	(GT) ₆	C	A	G	G	ACC	G	C	G	C	T	GG	-	A	(GA) ₅	C	AC	G	G	A	-178.6	d3	AY828332
DF3.3	4/8	C	CC	C	G	T	G	G	G	G	T	(GT) ₆	C	A	G	G	ACC	G	C	G	C	T	GG	-	A	(GA) ₄	C	AC	G	G	A	-180.3	d2	AY828331

Species are as follows: A = *A. albitalaris*, B = *A. albitalaris* B, C = *Anopheles manjorae*, D = *Anopheles deaneorum*. Columns 1 and 2 are specimen number, clone number, and number of clones/total, for example, A1.1 is *A. albitalaris* specimen 1, set of like clones number 1, which was found in 3 of 15 total clones. M and F denote male and female, if known. Only variable bases are shown. Single mutations that appeared only once were not considered because of the possibility they were due to Tag errors.

^a The initial dG is the energy level of folded RNA. The region for the test includes 91 bases in the 5.8S subunit and 43 bases in the 28S.

Table 3. Uncorrected "p" distance matrix of clones from A1, B1, C1, and D1

	A1.1	A1.2	A1.3	A1.4	B1.1	B1.2	B1.3	B1.4	C1.1	C1.2	D1.1	D1.2	D1.3	D1.4
A1.2	0.0028	—												
A1.3	0.0057	0.0028	—											
A1.4	0.0057	0.0028	0	—										
B1.1	0.0085	0.0113	0.0086	0.0086	—									
B1.2	0.0086	0.0114	0.0087	0.0086	0	—								
B1.3	0.0057	0.0085	0.0057	0.0057	0.0028	0.0029	—							
B1.4	0.0086	0.0114	0.0087	0.0086	0	0	0.0029	—						
C1.1	0.0057	0.0086	0.0115	0.0115	0.0143	0.0144	0.0115	0.0144	—					
C1.2	0.0028	0.0057	0.0086	0.0085	0.0114	0.0114	0.0086	0.0115	0.0029	—				
D1.1	0.0028	0.0057	0.0087	0.0087	0.0114	0.0115	0.0086	0.0114	0.0085	0.0057	—			
D1.2	0.0028	0.0057	0.0088	0.0087	0.0116	0.0117	0.0087	0.0116	0.0087	0.0058	0	—		
D1.3	0.0028	0.0057	0.0088	0.0088	0.0117	0.0118	0.0088	0.0116	0.0087	0.0058	0	0	—	
D1.4	0.0028	0.0056	0.0086	0.0086	0.0113	0.0114	0.0084	0.0114	0.0086	0.0057	0	0	0	—

Clone C3.1 differed from other conspecific clones by 5.6–6.6% and C4.1 differed by 3.5–4.1%. Genetic difference between the 2 variant clones was 2.0%.

Secondary Structure of rRNA

The secondary structures of rDNA ITS2 were predicted by MFOLD (Zuker et al. 1999). Minimum free energies in kilocalories/mole were -181.5 to -185.5 for *A. albitarsis*, -176.7 to -180.0 for *A. albitarsis* B, -175.6 to -179.0 for *A. marajoara*, and -178.6 to -183.4 for *A. deaneorum*. The structures of the 2 variant *A. marajoara* clones, C3.1 and C4.1, have significantly lower energy (-167.4 and -168.9 kcal/mole; $P < 0.01$ in the Student's *t*-test) and presumably lower stability than other *A. marajoara*. Figure 2A shows the predicted folding structures of all clones in the *albitarsis* complex except C3.1 (Figure 2B) and C4.1

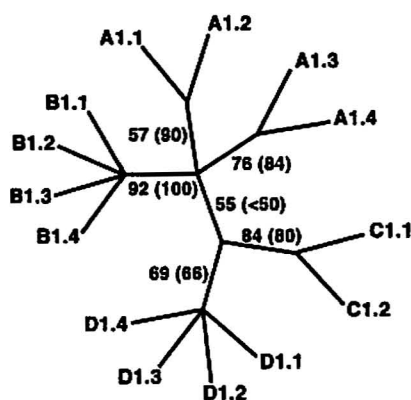


Figure 1. MP tree generated from rDNA ITS2 sequence derived from individuals A1, B1, C1, and D1 in Table 3. Species (number of clones): *Anopheles albitarsis* (15), *A. albitarsis* B (10), *Anopheles marajoara* (15), and *Anopheles deaneorum* (11). The same topology is found when AM2, AF2, BM2, BF2, CM2, CF2, DM2, and DF2 are combined. Bootstrap values are on the branches. The first numbers are from MP analysis; the second number in parenthesis is from MRBAYES analysis.

(Figure 2C). Note that the stem and loop near the presumptive ITS2 excision site (Fritz et al. 1994) (next to the right arrow in Figure 2A) is missing in the 2 variant clones (Figure 2B,C).

Discussion

A basic assumption about multigene families, such as rDNA, is that the processes collectively referred to as concerted evolution (gene conversion and unequal crossing over) maintain homogeneity of all copies (Hood et al. 1975; Smith 1976; Zimmer et al. 1980; Dover 1982). Mutations rapidly spread to all members of the gene family even if there are arrays located on different chromosomes (Dover 1982; Arnheim 1983; Gerbi 1985; Tautz et al. 1988). In the case of noncoding regions, such as ITS2, this can lead to fixed interspecific differences and intraspecific homogeneity. The efficiency of homogenization of rDNA is usually high (Liao 1999), as exemplified by its common use as a marker for mosquito identification, most of which are derived from ITS2 (examples given in Wilkerson et al. 2004). However, as our results show, when mutation rates are higher than rates of homogenization, then variation within individuals may be greater than that observed between populations (see also Fritz et al. 1994; Onyabe and Conn 1999; Wilkerson et al. 2004). This possibility should be accounted for before rDNA is used for phylogenetic or population studies or as a basis for species-specific PCR primers.

ITS2 Variation

The ITS2 of all 4 RAPD-determined species in the *Albitarsis* Complex were intragenomically and interspecifically variable. Length variation was limited (344–365 bp) and mostly attributable to the 2 variable microsatellite regions. In addition, there were a number of indels and base substitutions accounting for both the length and sequence variabilities (see Results and Table 2). *Anopheles albitarsis* differed from the other species in having intragenomically variable ACC and GC indels (positions 236 and 271) and a variable T/C mutation at position 43. The ACC indel and the T/C mutations were

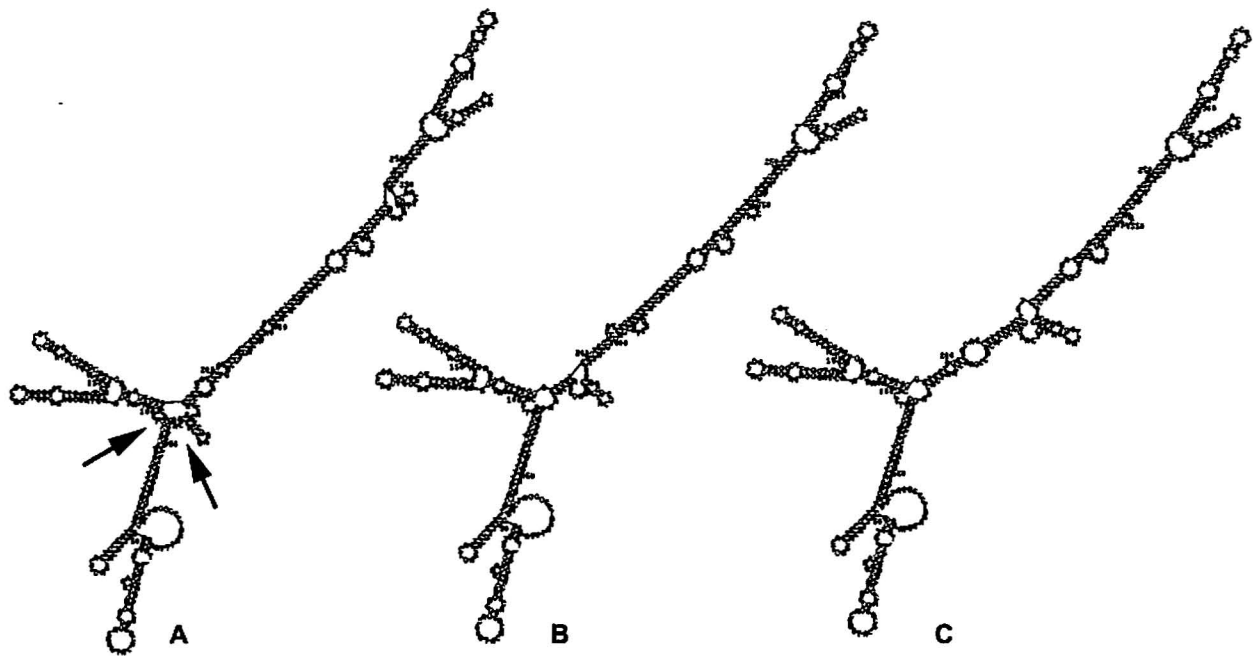


Figure 2. Predicted secondary structure of rDNA ITS2, including a combined 134 bases from the flanking 5.8S (91) and 28S (43) subunits. The secondary structure common to clones from all species (A) except for the 2 clones shown in (B) and (C), which were found in 2 individuals of *Anopheles marajoara* from Cojedes, Venezuela.

used by Li and Wilkerson (2005) to design species-specific primers to identify *A. albitarsis*, *A. albitarsis* B and *A. deaneorum* as a group, and *A. albitarsis*, respectively. Even though the above 3 (ACC, GC, and T/C) differences are not fixed in *A. albitarsis*, PCR primers designed based on them still amplified as if there were only target sequence present and therefore still functioned to diagnose the species or groups of species.

Clones of *A. albitarsis* ITS2 showed greater diversity than the other 3 species. In this case, intragenomic ITS2 variation within *A. albitarsis* was greater than that between species in the complex. For example, the genetic distance between A1.1 and A1.3 (*A. albitarsis*) was 0.57%, whereas the difference between A1.1 and D1.1 (*A. deaneorum*) was 0.28% (Table 3). This is an apparent example of mutation rates that are higher than homogenization rates. Intragenomic variation at ITS2, and in other parts of the rDNA gene array, is probably very common (Harris and Crandall 2000). In *Anopheles* mosquitoes, intragenomic variation has also been found in a number of other *Anopheles* species (Onyabe and Conn 1999; Wilkerson et al. 2004; Fairley et al. 2005) and in other mosquitoes in subfamily Culicinae (Black et al. 1989; Wesson et al. 1992; Müller et al. 1996; Beebe et al. 2000).

Effect of Microsatellites on Phylogenetic Reconstruction

Highly variable microsatellites may have confounding effects on phylogenetic and population genetics analyses. Harris and Crandall (2000) noted that if the multicopy nature of a marker is not recognized, inconsistent results can occur because

alleles will not be distributed in a Mendelian manner. Cloning results verified our hypothesis that microsatellite variation was responsible for ambiguous sequencing results. However, in our case (data not shown), and in that of Vogler and DeSalle (1994), phylogenetic results were not affected by exclusion of microsatellite regions.

Chromosome Location of rDNA Arrays

Figure 1 shows 2 clusters of clones from the same individual of *A. albitarsis* that are as different from each other as they are from the other 3 species. This suggests either that there are 2 rDNA loci within *A. albitarsis* or that there are semi-independently evolving homologous rDNA loci. This could be caused by inefficient gene conversion and gene recombination. Multiple rDNA locations are not unusual, for example, there are 5 in humans (Gonzalez and Sylvester 2001) and at least 2 in *Drosophila hydei* (Hennig et al. 1975) and grasshoppers (White et al. 1982). Similar explanations were considered for other *Anopheles* mosquitoes by Onyabe and Conn (1999) and Beebe et al. (2000).

The rDNA arrays are usually on chromosomes associated with sex determination. Kumar and Rai (1990) and Marchi and Pili (1994) mapped dozens of species of mosquitoes and found rDNA loci on the autosomes of culicine mosquitoes and on the X and Y chromosomes of an *Anopheles*. In addition, they found loci on heterologous chromosomes in genus *Aedes*, the only confirmed example of loci on different chromosomes found so far in mosquitoes. In the Gambiae Complex (subgenus *Cellia*), *Anopheles gambiae* Giles and

Anopheles arabiensis Patton have rDNA only on the X chromosome, whereas in the other species of the complex, it is on the X and Y chromosomes (Collins et al. 1989). In 2 *Anopheles* subgenus *Nyssorhynchus* species, Rafael et al. (2003) found rDNA on both the X and Y chromosomes. If rDNA was associated only with the X chromosome, as it is in *A. gambiae*, then males would be expected to have half the number of rDNA cistron copies (Collins et al. 1989) and half the haplotype diversity. If there were a subset of rDNA associated with the Y but not the X chromosome, then only males would be expected to have the Y-associated rDNA. In our sample, we did not see higher haplotype diversity associated with males or females.

Polanco et al. (2000) proposed 2 models to account for apparently correlated sets of rDNA other than loci on separate chromosomes: a haplotypic single-lineage model for ITS evolution and a multilocus model for IGS evolution. The X and Y chromosomes in *Anopheles* are only partially homologous, and X chromosome variants do occur (Baimai et al. 1993; Rafael et al. 2003). Such factors may contribute to incomplete homogenization and could explain our finding of partially correlated intragenomic ITS2 haplotypes. As employed in the above studies, physical mapping using in situ hybridization is needed to confirm the location of rDNA loci in the *A. albitarsis* complex species.

Anopheles albitarsis Species E

Based on complete sequence of the mitochondrial COI, Lehr et al. (2005) proposed a fifth species (*A. albitarsis* E) for the *albitarsis* complex in northern Brazil and Venezuela. We found no evidence from ITS2 sequence to support their conclusions. Isosequential ITS2 can occur in closely related *Anopheles* species (see above), and additional data are necessary to resolve this question.

Variant *A. marajoara* Clones

Anopheles marajoara individuals COJ9 and COJ10 from Cojedes, Venezuela, each had a different highly divergent clone (Table 2). The sequences are similar to the other *A. marajoara* ITS2 but differ from each other by about as much as *A. marajoara* does from the other 3 species. One of the clones (C3.1) has many mutations throughout its length, whereas the other (C4.1) is the same as all the other *A. marajoara* clones up until position 207, after which it mirrors the mutations in the more divergent clone. This "half-variant" could be due to template jumping, which could anomalously combine normal and variant sequence (Thompson et al. 2002). The relatively high sequence variation between these 2 clones suggests that these copies could be from nonfunctioning rDNA (pseudogenes). To test this possibility, we compared estimated minimum free energy levels and looked at the secondary structure predicted by the program MFOLD (Zuker et al. 1999). We found that the folding structures of these 2 clones have statistically significantly lower energies than all other clones (see above) and therefore lower structural stability. In addition, the variant clones lack a stem and loop at the ITS2 excision site present

in all other clones (Figure 2). It is possible that this structural variation could affect cleavage efficiency of the precursor RNA, and it leads us to conclude that these copies probably come from nonfunctioning rDNA (pseudogenes). To our knowledge, this is the first of such report in a mosquito, but they have been documented in other organisms (Brownell et al. 1983; Benevolenskaya et al. 1997; Razafimandimbison et al. 2004). Further work is clearly needed to verify this observation.

Application of ITS2 Intragenomic Variation

Unambiguous identification of *Anopheles* malaria vector species is essential for the study of an array of factors that affect control and disease transmission. When morphological characters are not available, molecular alternatives must be found. In the case of the *Albitarsis* Complex, we initially looked at sequence of the rDNA ITS2 hoping to find a way to separate the 4 species. Ordinarily, it is possible to directly sequence the ITS2 without ambiguity, but in the *Albitarsis* Complex, direct sequence results were not clear because of intragenomic variation. Using ITS2 clones, we were able to identify primer locations that were not compromised by intraspecific and intragenomic variability (Li and Wilkerson 2005). Such variability often cannot be seen in direct sequencing and could lead to design of primers that will give erroneous or ambiguous results. For example, at position 236 (Table 2) in *A. albitarsis*, there are 2 alleles, ACC present and ACC absent. In a consensus sequence, ACC absent copies are preferentially amplified because they are more common. If a primer were designed based on ACC present, then an *A. albitarsis* sample would be misidentified as *A. albitarsis* B or *A. deaneorum*. Similar results could occur with primers designed based on positions 43 and 328. With these data, we were able to design primers for the 4 species previously determined using RAPDs and provide an identification tool for an important malaria vector group.

Acknowledgments

We greatly appreciate the support of those who helped collect and rear many of the specimens used in this study. These include Terry Klein and Eric Milstrey who were then members of the US Army Medical Research Unit in Rio de Janeiro. But we especially thank Jose Bento Lima without whose extra efforts many of samples would not have been available to us. We also thank Lee Weigt at the Smithsonian Institution, Laboratory of Analytical Biology, for use of laboratory and sequencing facilities; David Erickson, Desmond Foley, and Jan Conn for thoughtful review of a draft of the manuscript; and Carl Schlichting for advice on statistical analysis. This research was performed under a Memorandum of Understanding between the Walter Reed Army Institute of Research and the Smithsonian Institution, with institutional support provided by both organizations. The material published reflects the views of the authors and should not be construed to represent those of the Department of the Army or the Department of Defense. This work was sponsored by NIH AI RO154139 to Jan Conn.

References

- Arnheim N. 1983. Concerted evolution of multigene families. In: Nei M, Koehn RK, editors. Evolution of genes and proteins. Sunderland (MA): Sinauer. p. 38–61.

- Baimai V, Kijchalao U, Rattanarithikul R. 1993. Metaphase karyotypes of *Anopheles* of Thailand and southeast Asia: II. Maculatus Group, Neocellia Series, Subgenus *Cellia*. Mosq Syst. 25:116–123.
- Beebe NW, Cooper RD, Foley DH, Ellis JT. 2000. Populations of the south-west Pacific malaria vector *Anopheles farauti* s.s. revealed by ribosomal DNA transcribed spacer polymorphisms. Heredity. 84: 244–253.
- Benevolenskaya EV, Kogan GL, Tulin AV, Philipp D, Gvozdev VA. 1997. Segmented gene conversion as a mechanism of correction of 18S rRNA pseudogene located outside of rDNA cluster in *D. melanogaster*. J Mol Evol. 44:646–651.
- Black WC 4th, McLain DK, Rai KS. 1989. Patterns of variation in the rRNA cistron within and among world populations of a mosquito *Aedes albopictus* (Skuse). Genetics. 121:539–550.
- Brownell E, Krystal M, Arnheim N. 1983. Structure and evolution of human and African Ape rDNA pseudogenes. Mol Biol Evol. 1:29–37.
- Collins FH, Paskewitz SM, Finnerty V. 1989. Ribosomal RNA genes of the *Anopheles gambiae* species complex. Adv Dis Vector Res. 6:1–28.
- Conn JE, Wilkerson RC, Segura MNO, de-Souza-Raimundo TL, Schlichting CD, Wirtz RA, Povoia MM. 2002. Emergence of a new neotropical malaria vector facilitated by human migration and changes in land use. Am J Trop Med Hyg. 66:18–22.
- Cornel AJ, Porter CH, Collins FH. 1996. Polymerase chain reaction species diagnostic assay for *Anopheles quadrimaculatus* cryptic species (Diptera: Culicidae) based on ribosomal DNA ITS2 sequences. J Med Entomol. 33:109–116.
- Dover GA. 1982. Molecular drive: a cohesive mode of species evolution. Nature. 299:111–117.
- Fairley TL, Kilpatrick CW, Conn JE. 2005. Intra-genomic heterogeneity of internal transcribed spacer rDNA in neotropical malaria vector, *Anopheles aquasalis* (Diptera: Culicidae). J Med Entomol. 42:795–800.
- Fritz GN, Conn J, Cockburn A, Seawright J. 1994. Sequence analysis of the ribosomal DNA internal transcribed spacer 2 from populations of *Anopheles nuneztovari* (Diptera: Culicidae). Mol Biol Evol. 11:406–416.
- Gerbi SA. 1985. Evolution of ribosomal DNA. In: MacIntyre RJ, editor. Molecular evolutionary genetics. New York: Plenum Press.
- Gonzalez IL, Sylvester JE. 2001. Human rDNA: evolutionary patterns within the genes and tandem arrays derived from multiple chromosomes. Genomics. 73:255–263.
- Harris DJ, Crandall KA. 2000. Intra-genomic variation within ITS1 and ITS2 of fresh water crayfishes (Decapoda: Cambaridae): implications for phylogenetic and microsatellite studies. Mol Biol Evol. 17:284–291.
- Hennig W, Link B, Leoncini O. 1975. The location of nucleolus organizer regions in *Drosophila hydei*. Chromosoma. 51:57–63.
- Hood L, Campbell JH, Elgin SC. 1975. The organization, expression, and evolution of antibody genes and other multigene families. Ann Rev Genet. 9:305–353.
- Huelsenbeck JP, Ronquist F. 2001. MRBAYES: Bayesian inference of phylogeny. Bioinformatics. 17:754–755.
- Klein TA, Lima JBP, Tada MS. 1991. Comparative susceptibility of anopheline mosquitoes to plasmodium falciparum in Rondonia Brazil. Am J Trop Med Hyg. 44:598–603.
- Klein TA, Lima JBP, Tada MS, Miller R. 1991. Comparative susceptibility of anopheline mosquitoes in Rondonia Brazil to infection by plasmodium vivax. Am J Trop Med Hyg. 45:463–470.
- Kumar A, Rai KS. 1990. Chromosomal localization and copy number of 18S + 28S ribosomal RNA genes in evolutionarily diverse mosquitoes (Diptera, Culicidae). Hereditas. 113:277–289.
- Lehr MA, Kilpatrick CW, Wilkerson RC, Conn JE. 2005. Cryptic species in the *Anopheles (Nyssorhynchus) albitarsis* (Diptera: Culicidae) complex: incongruence between random amplified polymorphic DNA-polymerase chain reaction identification and analysis of mitochondrial DNA COI gene sequences. Ann Entomol Soc Am. 98:894–903.
- Li C, Lee JS, Groebner JL, Kim H, Klein T, O'Guinn ML, Wilkerson RC. 2005. A newly recognized species in the *Anopheles* Hyrcanus Group and molecular identification of related species from the Republic of South Korea (Diptera: Culicidae). Zootaxa. 939:1–8.
- Li C, Wilkerson RC. 2005. Identification of *Anopheles (Nyssorhynchus) albitarsis* complex species (Diptera: Culicidae) using rDNA ITS2-based PCR primers. Mem Inst Oswaldo Cruz. 100:495–500.
- Liao A. 1999. Molecular evolution '99 Concerted evolution: molecular mechanism and biological implications. Am J Hum Genet. 64:24–30.
- Linthicum KJ. 1988. A Revision of the Argyritarsis Section of the Subgenus *Nyssorhynchus* of *Anopheles* Diptera Culicidae. Mosq Syst. 20:98–271.
- Marchi A, Pili E. 1994. Ribosomal RNA genes in mosquitoes: localization by fluorescence *in situ* hybridization (FISH). Heredity. 72:599–605.
- Merritt TJS, Young CR, Vogt RG, Wilkerson RC, Quattro JM. 2005. Intron retention identifies a malaria vector within the *Anopheles (Nyssorhynchus) albitarsis* complex (Diptera: Culicidae). Mol Phyl Evol. 35:719–724.
- Miller BR, Crabtree MB, Savage HM. 1996. Phylogeny of fourteen *Culex* mosquito species, including the *Culex pipiens* complex, inferred from the internal transcribed spacers of ribosomal DNA. Insect Mol Biol. 5:93–107.
- Nylander JA. 2004. MrModeltest v2. Uppsala, Sweden: Evolutionary Biology Centre, Uppsala University.
- Onyabe DY, Conn JE. 1999. Intra-genomic heterogeneity of a ribosomal DNA spacer (ITS2) varies regionally in the neotropical malaria vector *Anopheles nuneztovari* (Diptera: Culicidae). Insect Mol Biol. 8:435–442.
- Paskewitz SM, Wesson DM, Collins FH. 1993. The internal transcribed spacers of ribosomal DNA in five members of the *Anopheles gambiae* species complex. Insect Mol Biol. 2:247–257.
- Peyton EI, Wilkerson RC, Harbach RE. 1992. Comparative analysis of the subgenera *Kerteszia* and *Nyssorhynchus* (Diptera: Culicidae). Mosq Syst. 24:51–69.
- Polanco C, Gonzalez AI, Dover GA. 2000. Patterns of variation in the inter-genic spacers of ribosomal DNA in *Drosophila melanogaster* support a model for genetic exchanges during X-Y pairing. Genetics. 155:1221–1229.
- Rafael MS, Tadei WP, Recco-Pimentel SM. 2003. Location of ribosomal genes in the chromosomes of *Anopheles darlingi* and *Anopheles nuneztovari* (Diptera, Culicidae) from the Brazilian Amazon. Mem Inst Oswaldo Cruz. 98:629–635.
- Razafimandimbison SG, Kellogg EA, Bremer B. 2004. Recent origin and phylogenetic utility of divergent ITS putative pseudogenes: a case study from Naucleaeae (Rubiaceae). Syst Biol. 53:177–192.
- Sambrook J, Fritsch EF, Maniatis T. 1989. Molecular cloning. A laboratory manual, 2nd ed. Cold Spring Harbor, NY: Cold Spring Harbor Laboratory.
- Simmons MP, Ochoterena H. 2000. Gaps as characters in sequence-based phylogenetic analyses. Syst Biol. 49:369–381.
- Smith GP. 1976. Evolution of repeated DNA sequences by unequal crossover. Science. 191:428–535.
- Sokal RR, Rohlf FJ. 1981. Biometry. 2nd ed. New York: W.H. Freeman & Company.
- Swofford DL. 1998. PAUP*. Phylogenetic analysis using parsimony (*and other methods), Version 4. Sunderland (MA): Sinauer Associates.
- Tautz D, Hancock JM, Webb DA, Tautz C, Dover GA. 1988. Complete sequences of the ribosomal RNA genes of *Drosophila melanogaster*. Mol Biol Evol. 5:366–376.
- Thompson JR, Marcelino LA, Polz MF. 2002. Heteroduplexes in mixed-template amplification, consequence and elimination by 'reconditioning PCR'. Nucleic Acids Res. 30:2083–2088.

- Thweatt R, Lee JC. 1990. Yeast precursor ribosomal RNA molecular cloning and probing the higher order structure of the internal transcribed spacer 1 by kethoxal and dimethylsulfate modification. *J Mol Biol.* 211: 305–320.
- van Nues RW, Rientjes JM, Morre SA, Mollee E, Planta RJ, Venema J, Raue HA. 1995. Evolutionarily conserved structural elements are critical for processing of internal transcribed spacer 2 from *Saccharomyces cerevisiae* precursor ribosomal RNA. *J Mol Biol.* 250:24–36.
- Vogler AP, DeSalle R. 1994. Evolution and phylogenetic information content of the ITS-1 region in the Tiger Beetle *Cicindela dorsalis*. *Mol Biol Evol.* 11:293–405.
- Wesson DM, Porter CH, Collins FH. 1992. Sequence and secondary structure comparisons of its rDNA in mosquitoes (Diptera: Culicidae). *Mol Phyl Evol.* 1:253–269.
- White MJD, Dennis ES, Honeycutt RL, Contreras N. 1982. Cytogenetics of the parthenogenic grasshopper *Warramaba virgo* and its bisexual relatives. IX. The ribosomal RNA cistrons. *Chromosoma.* 85:181–199.
- Wilkerson RC, Foster PG, Li C, Sallum MAM. 2005. Molecular phylogeny of the neotropical *Anopheles (Nyssorhynchus) albitarsis* species complex (Diptera: Culicidae). *Ann Entomol Soc Am.* 98:918–925.
- Wilkerson RC, Gaffigan TV, Lima JB. 1995. Identification of species related to *Anopheles (Nyssorhynchus) albitarsis* by random amplified polymorphic DNA-Polymerase chain reaction (Diptera: Culicidae). *Mem Inst Oswaldo Cruz.* 90:721–732.
- Wilkerson RC, Parsons TJ, Albright DG, Klein, TA, Braun MJ. 1993. Random amplified polymorphic DNA (RAPD) markers readily distinguish cryptic mosquito species (Diptera: Culicidae: *Anopheles*). *Insect Mol Biol.* 1: 205–211.
- Wilkerson RC, Parsons TJ, Klein TA, Gaffigan TV, Bergo E, Consolim J. 1995. Diagnosis by random amplified polymorphic DNA polymerase chain reaction of four cryptic species related to *Anopheles (Nyssorhynchus) albitarsis* (Diptera: Culicidae) from Paraguay, Argentina, and Brazil. *J Med Entomol.* 32:697–704.
- Wilkerson RC, Reinert JF, Li C. 2004. Ribosomal DNA ITS2 sequences differentiate six species in the *Anopheles crucians* complex (Diptera: Culicidae). *J Med Entomol.* 41:392–401.
- Zimmer EA, Martin SL, Beverly SM, Kan YW, Feder JL. 1980. Rapid duplication and loss of genes coding for the chains of hemoglobin. *Proc Nat Acad Sci USA.* 77:2158–2162.
- Zuker M, Mathews DH, Turner DH. 1999. Algorithms and thermodynamics for RNA secondary structure prediction: a practical guide in RNA biochemistry and biotechnology. In: Barciszewski J, Clark BFC, editors. NATO ASI Series. Dordrecht (Netherlands): Kluwer Academic Publishers.

Received September 19, 2005

Accepted September 15, 2006

Corresponding Editor: Robert Fleischer