



AFRL-RX-WP-TP-2009-4213

**ATOMIC SCALE STRUCTURE AND CHEMICAL
COMPOSITION ACROSS ORDER-DISORDER
INTERFACES (POSTPRINT)**

**R. Srinivasan, R. Banerjee, J.Y. Hwang, G.B. Viswanathan, J. Tiley, D.M. Dimiduk,
and H.L. Fraser**

**Metals Branch
Metals, Ceramics, and NDE Division**

JULY 2008

Approved for public release; distribution unlimited.

See additional restrictions described on inside pages

STINFO COPY

© 2009 The American Physical Society

**AIR FORCE RESEARCH LABORATORY
MATERIALS AND MANUFACTURING DIRECTORATE
WRIGHT-PATTERSON AIR FORCE BASE, OH 45433-7750
AIR FORCE MATERIEL COMMAND
UNITED STATES AIR FORCE**

REPORT DOCUMENTATION PAGE				Form Approved OMB No. 0704-0188	
The public reporting burden for this collection of information is estimated to average 1 hour per response, including the time for reviewing instructions, searching existing data sources, gathering and maintaining the data needed, and completing and reviewing the collection of information. Send comments regarding this burden estimate or any other aspect of this collection of information, including suggestions for reducing this burden, to Department of Defense, Washington Headquarters Services, Directorate for Information Operations and Reports (0704-0188), 1215 Jefferson Davis Highway, Suite 1204, Arlington, VA 22202-4302. Respondents should be aware that notwithstanding any other provision of law, no person shall be subject to any penalty for failing to comply with a collection of information if it does not display a currently valid OMB control number. PLEASE DO NOT RETURN YOUR FORM TO THE ABOVE ADDRESS.					
1. REPORT DATE (DD-MM-YY) July 2008		2. REPORT TYPE Journal Article Postprint		3. DATES COVERED (From - To)	
4. TITLE AND SUBTITLE ATOMIC SCALE STRUCTURE AND CHEMICAL COMPOSITION ACROSS ORDER-DISORDER INTERFACES (POSTPRINT)				5a. CONTRACT NUMBER In-house	
				5b. GRANT NUMBER	
				5c. PROGRAM ELEMENT NUMBER 62102F	
6. AUTHOR(S) G.B. Viswanathan, R. Srinivasan, and H.L. Fraser (The Ohio State University) R. Banerjee and J.Y. Hwang (University of North Texas) J. Tiley and D.M. Dimiduk (AFRL/RXLMD)				5d. PROJECT NUMBER 4347	
				5e. TASK NUMBER RG	
				5f. WORK UNIT NUMBER M02R1000	
7. PERFORMING ORGANIZATION NAME(S) AND ADDRESS(ES) The Ohio State University Dept. of Materials Science & Engineering Columbus, OH 43210 ----- University of North Texas Dept. of Materials Science & Engineering Denton, TX 76203				8. PERFORMING ORGANIZATION REPORT NUMBER AFRL-RX-WP-TP-2009-4213	
9. SPONSORING/MONITORING AGENCY NAME(S) AND ADDRESS(ES) Air Force Research Laboratory Materials and Manufacturing Directorate Wright-Patterson Air Force Base, OH 45433-7750 Air Force Materiel Command United States Air Force				10. SPONSORING/MONITORING AGENCY ACRONYM(S) AFRL/RXLMD	
				11. SPONSORING/MONITORING AGENCY REPORT NUMBER(S) AFRL-RX-WP-TP-2009-4213	
12. DISTRIBUTION/AVAILABILITY STATEMENT Approved for public release; distribution unlimited.					
13. SUPPLEMENTARY NOTES Journal article published in <i>Physical Review Letters</i> , Vol. 102, February 2009. PAO Case Number: WPAFB 08-4001; Clearance Date: 08 Jul 2008. © 2009 The American Physical Society. The U.S. Government is joint author of this work and has the right to use, modify, reproduce, release, perform, display, or disclose the work. Paper contains color.					
14. ABSTRACT The high strength of many metallic alloys, especially at elevated temperatures, including nickel base superalloys used in aircraft jet engines, is often attributed to the presence of homogeneously distributed second phase precipitates within a disordered matrix. In superalloys, the ordered precipitate/disordered matrix interface plays a critical role in determining the precipitate coarsening kinetics as well as the strengthening mechanism at high temperatures. Combining aberration-corrected high resolution scanning transmission electron microscopy (HRSTEM) with three-dimensional atom probe (3DAP) tomography, the atomic scale structure and chemical composition across the order/disorder interface in a nickel base superalloy has been determined. Experimentally, for the first time, the order-disorder transition across this interface has been shown to be ~4-6 atomic layers wide, while the compositional gradient across the same interface is ~12-14 atomic layers wide. Such atomic resolution information raises fundamental questions regarding the definition of such interfaces and is essential for understanding both their high temperature stability as well as role in strength.					
15. SUBJECT TERMS nickel base superalloys, coarsening kinetics, aberration-corrected high resolution scanning transmission electron microscopy, three-dimensional atom probe tomography, high temperature					
16. SECURITY CLASSIFICATION OF:			17. LIMITATION OF ABSTRACT: SAR	18. NUMBER OF PAGES 10	19a. NAME OF RESPONSIBLE PERSON (Monitor) Christopher F. Woodward 19b. TELEPHONE NUMBER (Include Area Code) N/A
a. REPORT Unclassified	b. ABSTRACT Unclassified	c. THIS PAGE Unclassified			

Atomic Scale Structure and Chemical Composition across Order-Disorder Interfaces

R. Srinivasan, R. Banerjee,² J. Y. Hwang,² G. B. Viswanathan,¹ J. Tiley,³ D. M. Dimiduk,³ and H. L. Fraser¹

¹*Center for the Accelerated Maturation of Materials, Department of Materials Science and Engineering, The Ohio State University, Columbus, Ohio 43210, USA*

²*Center for Advanced Research and Technology, Department of Materials Science and Engineering, University of North Texas, Denton, Texas 76203, USA*

³*Materials and Manufacturing Directorate, Air Force Research Laboratory, Dayton, Ohio 45309, USA*

(Received 19 November 2008; published 25 February 2009)

Through a combination of aberration-corrected high-resolution scanning transmission electron microscopy and three-dimensional atom probe tomography, the true atomic-scale structure and change in chemical composition across the complex order-disorder interface in a metallic alloy has been determined. The study reveals the presence of two interfacial widths, one corresponding to an order-disorder transition, and the other to the compositional transition across the interface, raising fundamental questions regarding the definition of the interfacial width in such systems.

DOI: 10.1103/PhysRevLett.102.086101

PACS numbers: 68.35.-p, 68.37.Ma, 68.37.Vj

Interfaces play an important role in determining several properties in multiphase systems [1–3]. Atomic-scale renditions of the interface structure have been primarily accomplished through high-resolution transmission electron microscope (HRTEM) phase-contrast images (and simulations) that allow for identification of the positions of atomic columns and structural defects at the interface [4,5]. Recent advances in HRTEM and HRSTEM have been enabled by the development of spherical aberration correctors for the electron probe as well as the image [6–8]. In parallel, developments in first-principles based electronic structure calculations and larger scale atomistic modeling tools permit more accurate simulations of the interface structure [9,10]. Recent atomistic simulations of the interface between an ordered precipitate and disordered matrix in a nickel-base superalloy indicate that the interface is not abrupt at the atomic scale [9]. While the implications of these results on the microstructural stability [11–13] and high temperature mechanical properties [14–19] are substantial, there is no clear experimental evidence confirming these atomistic simulations. The limitations associated with the resolution of experimental techniques have so far prevented direct atomic-scale imaging and interpretation of the structural and compositional transition across such interfaces. Techniques such as 3D Atom Probe (3DAP) Tomography have enabled detailed exploration of nanometer-scale elemental partitioning across interphase interfaces, including the γ/γ' interface in nickel base alloys [20–26]. In addition, developments in aberration-corrected HRSTEM now permit Z contrast imaging (arising from the differences in atomic numbers) and interpretation at atomic resolution [27–29]. Our study provides direct experimental evidence at the atomic scale of the true structure and composition of the γ/γ' interface in a nickel base alloy by coupling two advanced and complementary techniques: aberration-corrected HRSTEM and 3DAP.

This work was carried out on the nickel base superalloy Rene' 88 DT [nominal composition 55.63Ni-18.02Cr-13.00Co-4.74Ti-4.45Al-2.48Mo-1.21W-0.46Nb (in at %)], with superior creep and fatigue properties for turbine disk applications [14–16]. The typical microstructure consists of a disordered fcc γ matrix with ordered $L1_2$ γ' precipitates of varying sizes depending upon processing history [16]. Bore and rim specimens from a turbine disk [30] were subjected to a supersolvus anneal (30 min. at 1150 °C), in the single γ phase field, followed by cooling at 24 °C/min to room temperature, and subsequent aging for 50 h at 760 °C (to achieve a near-equilibrium condition), resulting in the formation of larger (>200 nm) primary γ' and smaller (<50 nm) secondary γ' precipitates [see Energy Filtered TEM (EFTEM) image in Fig. 1(a)]. Samples for EFTEM and HRSTEM studies were prepared by machining of 3 mm discs, followed by Ar⁺ ion milling on Fischione Model 1010 and Model 1040 systems. EFTEM studies were carried out using the Cr M edge (at 42 eV) in the electron energy loss spectrum to enhance contrast between the Cr-depleted γ' precipitates and the Cr-enriched γ matrix [31].

Atomic resolution, Z contrast, imaging [through High Angle Annular Dark Field (HAADF)-HRSTEM] was performed on a FEI Titan 80–300 microscope, operated at 300 kV, equipped with a CEOS probe aberration corrector. Primary γ' precipitates were chosen to ensure a planar interface parallel to the beam direction, across the foil thickness. To ensure consistency between the HRSTEM and 3DAP analyses, a γ/γ' interface parallel to the {002} planes was specifically chosen. The atomic structure of such an interface is shown in the HAADF-HRSTEM image in Fig. 1(b) (note the intensity maxima at spatial frequencies that correspond to the {100} and {110} superlattice reflections from the γ' in the Fourier transform). A filtered section of the HRSTEM image, with improved image contrast, is shown in Fig. 1(c). Note that while all atomic

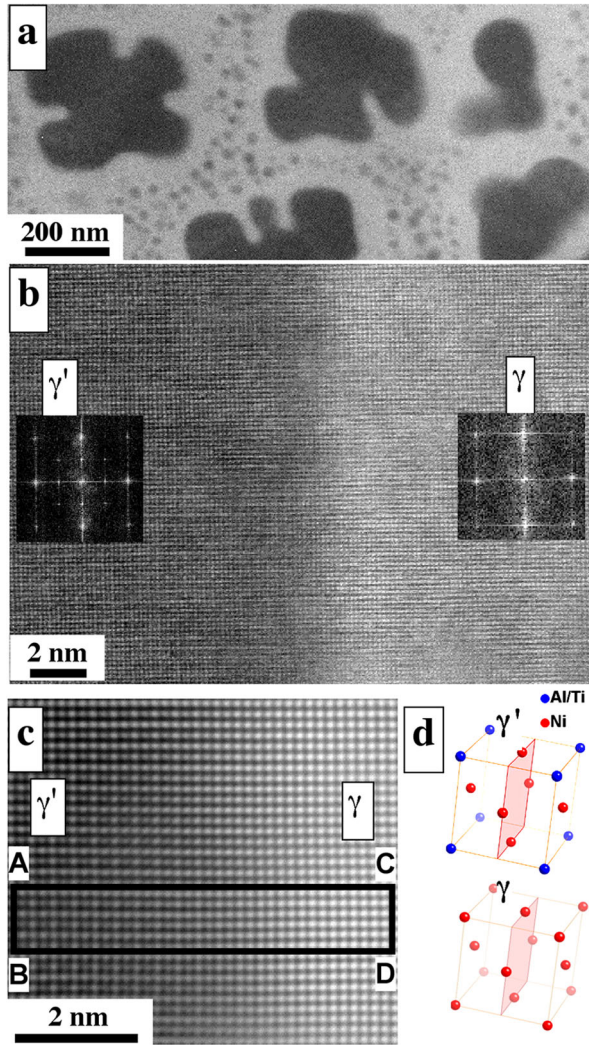


FIG. 1 (color online). (a) Cr-M edge EFTEM low magnification image showing the typical microstructure in Rene88DT slow cooled from 1150 °C (at 30 °C/min) and aged 50 h at 760 °C; the larger particles represent the primary γ' while the smaller particles represent the secondary γ' , (b) HRSTEM image along the [100] zone showing the interface between a primary γ' precipitate and γ matrix; the insets show Fourier Transforms indicating order within the γ' and lack of order within the γ phase, (c) higher magnification filtered HRSTEM image showing the structural and compositional transition across the γ/γ' interface, (d) schematic diagram showing the γ' and γ unit cells, with the (002) plane indicated; alternating (002) rows of Ni and (Ni + Al/Ti) atoms in the γ' can be visualized, while no such order exists in the γ phase.

columns exhibit similar intensities in the γ , alternating brighter and darker rows of atomic columns (representative of {002} planes) are observed in the γ' , due to differences in the average atomic numbers of individual atomic columns. The ordered $L1_2$, Ni_3Al -based, structure of the γ' phase consists of two distinct sublattices, the Ni sublattice corresponding to the face-center positions and the Al sublattice corresponding to the corner positions of the cubic

unit cell. This yields alternating {002} planes of pure Ni and 50% Ni and 50% Al atoms, respectively, when viewed along the $\langle 100 \rangle$ direction [Fig. 1(d)]. In case of Rene'88 DT (with several alloying elements), the γ' phase exhibits alternating heavier Ni-rich (with other substitutional atoms such as Co) and lighter Al-rich (with other atoms such as Ti) {002} planes [refer left half of Figs. 1(b) and 1(c)], presenting direct evidence of the $L1_2$ superlattice structure. To probe the compositional and structural transition from disordered γ to ordered γ' , an intensity profile is plotted across the interface by averaging over the box ABCD [from Fig. 1(c)], as shown in Fig. 2(a). The profile of average intensity across atomic columns lying parallel to AB (along the {002} planes) versus the perpendicular distance has been plotted in Fig. 2(b). The higher background intensity in the γ matrix is due to the segregation of heavier alloying elements (such as Cr, Co, W, Nb). In addition to the expected superlattice contrast in the γ' phase and lack of it in the γ phase, a definite transition zone is observed at the γ/γ' interface in Fig. 2(b). The ratio of the intensity of each atomic column to its adjacent column on the right can be used as a qualitative measure of the presence or absence of long-range chemical ordering, as shown in Fig. 2(c). Thus, for the γ phase this ratio remains essentially constant at a value near 1, since the site occupancies on the Ni and Al sublattices is equal in a random solid solution, while for

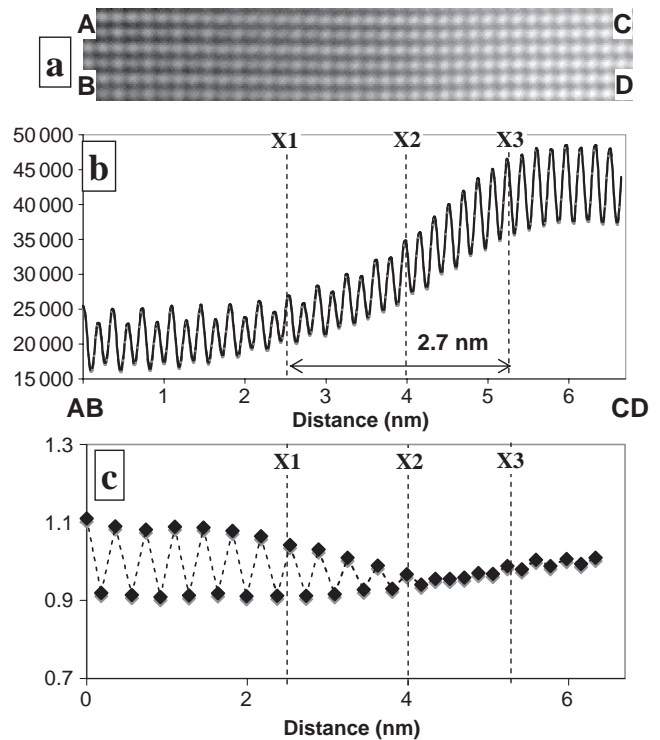


FIG. 2. (a) HRSTEM image from box ABCD delineated in Fig. 1(c). (b) Averaged intensity profiles across row AB through CD showing the transition from ordered γ' to disordered γ . (c) Progressive intensity ratios showing the order-disorder transition and compositional width of the interface.

the ordered γ' phase the ratio alternates between ~ 1.1 and 0.9 due to the differences in the site occupancies. In Fig. 2(c) a clear order-disorder transition zone can be defined at the γ/γ' interface (X1-X2) where the long-range order decreases roughly over 6–8 atomic $\{002\}$ planes (approximately 1 to 1.3 nm). The same transition zone has also been marked at the corresponding location in Fig. 2(b). Similarly, based on the averaged intensities of the $\{002\}$ planes [Fig. 2(a)], a compositional transition zone (X1-X3 in Fig. 2(b)), measuring 2.7 nm), from the lower intensity columns (lower Z) on the γ' side, to the higher intensity columns (higher Z) on the γ side, can now be defined. It is important to note that the X1-X2 order-disorder transition zone lies completely within the X1-X3 compositional gradient, while the X2-X3 zone, where averaged intensity ratios progressively tend towards 1, corresponds to a purely compositional transition within the γ phase, discussed in more detail below. Measurements of the interface width, as determined through HRSTEM studies, were made by calculating the average and standard deviation of the peak intensities representing the Ni and (Ni + Al/Ti) planes, respectively, in the γ' , and the intensity peaks in the γ phase. The interface width for each measurement was defined as the minimum interval (in integral $\{002\}$ plane spacings) between the 95% CI values separating the γ and γ' . An average value of approximately 2.2 nm (between 12–14 $\{002\}$ planes), with a standard deviation of approximately 0.5 nm, was obtained over several measurements of the interface width. Note that due to the small lattice mismatch between the γ matrix and γ' precipitates in this alloy ($<0.05\%$), the elastic strains at the interface are small; consequently, any thin-foil relaxation effects on the experimentally observed compositional gradients, are expected to be relatively low.

The above HRSTEM studies have been complemented with 3DAP experiments for quantitatively probing the compositional gradients across the γ/γ' interface. Needle-shaped 3DAP specimens with a tip radius ~ 50 nm were prepared (from the same Rene' 88 DT sample) by a combination of electrodischarge machining (EDM), electropolishing, and focused ion beam (FIB) techniques [32]. 3DAP experiments were conducted on a LEAPTM 3000 microscope manufactured by Imago Scientific Instruments, Inc. Figure 3(a) shows a 3D reconstruction depicting isoconcentration surfaces for Co (19 at%), corresponding to the γ , and Al (10 at%), corresponding to the γ' . From the size scale, it is apparent that these are sections of primary γ' precipitates separated by a γ channel. A 3DAP reconstruction of only Al atoms (black dots), exhibiting the higher concentration of Al within the γ' phase, is shown in Fig. 3(b). Figure 3(c) is a magnified view of the lower γ/γ' interface from Fig. 3(b), showing ordered planes of Al atoms with a plane spacing of ~ 0.36 nm, corresponding to the alternate Al-rich $\{002\}$ planes in the ordered γ' phase, confirming that the γ/γ'

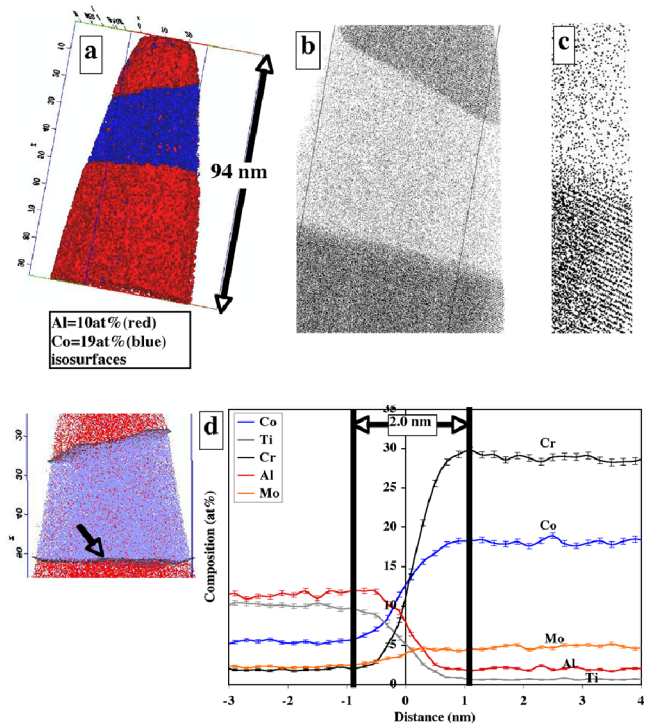


FIG. 3 (color online). (a) Al 10% (red) and Co 19% (blue) isoconcentration surfaces depicting morphology of the γ' precipitate used in 3DAP analysis; the red area is indicative of the primary γ' precipitate, (b) and (c) higher magnification views showing the stacking of alternate (002) Al planes within the γ' . (d) Proximity histogram depicting the compositional transition across the γ/γ' interface; the area used in the analysis is indicated by the arrow in the inset.

interface is perpendicular to the (z) axis of the sample. Note that Fig. 3(c) exhibits an order-disorder transition zone ~ 4 – $6\{002\}$ planes wide (0.7–1 nm), in good agreement with the HAADF-HRSTEM results. For a statistically relevant quantitative analysis of the compositional gradient across this interface [indicated by an arrow in Fig. 3(d)], compositional profiles for the primary alloying elements have been plotted in the form of a proximity histogram [33] in Fig. 3(d). While heavier Cr and Co partition preferentially to the γ , the lighter Al and Ti partition to the γ' with a clear gradient across the interface, consistent with the HRSTEM observations shown in Figs. 2(b) and 2(c). Based on the Cr and Co profiles, the width of the compositional gradient across the interface shown can be measured to be ~ 2.0 nm (average value ~ 2.4 nm), in excellent agreement with the HAADF-HRSTEM observations.

Recent results on atomistic modeling of the γ/γ' interface in the binary Ni-Al system by Mishin [9] and Ardell and Ozolins [13] predict that the order-disorder interface is not atomically abrupt. Mishin's results on Ni/Ni₃Al interfaces [9] indicate that the decay in long-range order across the interface (measured through variation in the Al-

sublattice occupancy across the interface) can occur over 4–6 atomic layers or ~ 0.7 –1.0 nm. This *predicted* value is in excellent agreement with our experimentally observed width of the order-disorder transition zone at the interface. Furthermore, the HAADF-HRSTEM and 3DAP observations indicate significant tolerance to compositional off-stoichiometry within the γ' phase. Referring to Fig. 2(b), the transition zone from γ' to γ is largely accounted for by a progressive increase in the intensity of alternate atomic columns belonging to the mixed Al + Ni sublattices, attributable to decreasing Al occupancy (and, consequently, increasing Ni or other elemental occupancy), in excellent agreement with the predictions of atomistic simulations of the binary Ni-Al system [9]. It is important to note that these simulations, performed on binary systems, may not directly predict the existence of the two experimentally observed interface widths.

Coupling of HAADF-HRSTEM Z contrast atomic resolution imaging with 3DAP Tomography serves to illustrate that the order-disorder interface in a nickel base alloy is not atomically abrupt but has a transition width, in agreement with prior atomistic simulations [9,13]. Furthermore, two transition “zones” can be defined, with the width of the order-disorder transition zone being smaller than the width of the compositional gradient. These results thus raise fundamental questions regarding the basic definition of an interface between an ordered phase and the surrounding disordered matrix and in general between two structurally and compositionally distinct phases. The structural and compositional diffuseness of the interface impacts the microstructural stability and mechanical properties of these metallic alloys, as it influences key parameters such as lattice misfit and coherency strains, which in turn directly impact the strengthening mechanisms and deformation behavior at elevated temperatures. The atomic-scale knowledge of structure and chemical composition is essential for a fundamental physically based understanding of such complex interfaces.

This work was funded in part by the Air Force Office of Scientific Research under the management of Dr. Joan Fuller and the Air Force Research Laboratory (AFRL). The support and facilities from the Center for the Accelerated Maturation of Materials (CAMM) at The Ohio State University and the Center for Advanced Research and Technology (CART) at the University of North Texas are gratefully acknowledged.

-
- [1] H. Yamada *et al.*, Science **305**, 646 (2004).
 - [2] A. Ziegler *et al.*, Science **306**, 1768 (2004).
 - [3] D. A. Muller *et al.*, Nature (London) **399**, 758 (1999).

- [4] C. L. Jia, M. Lentzen, and K. Urban, Science **299**, 870 (2003).
- [5] C. L. Jia and K. Urban, Science **303**, 2001 (2004).
- [6] H. Muller, S. Uhlemann, P. Hartel, and M. Haider, Microsc. Microanal. **12**, 442 (2006).
- [7] M. Haider, S. Uhlemann, and J. Zach, Ultramicroscopy **81**, 163 (2000).
- [8] H. Rose, Ultramicroscopy **103**, 1 (2005).
- [9] Y. Mishin, Acta Mater. **52**, 1451 (2004).
- [10] T. Kitashima, T. Yokokawa, A. C. Yeh, and H. Harada, Intermetallics **16**, 779 (2008).
- [11] I. M. Lifshitz and V. V. Slyozov, J. Phys. Chem. Solids **19**, 35 (1961).
- [12] C. Wagner, Z. Elektrochem. **65**, 581 (1961).
- [13] A. J. Ardell and V. Ozolins, Nature Mater. **4**, 309 (2005).
- [14] D. D. Krueger, R. D. Kissinger, R. D. Menzies, and C. S. Wukusick, U.S. Patent 4 957 567 1990.
- [15] D. D. Krueger, R. D. Kissinger, R. D. Menzies, in *Superalloys 1992*, edited by S. D. Antolovich *et al.* (TMS-AIME, Warrendale, PA, 1992), p. 277.
- [16] S. T. Wlodek, M. Kelly, D. A. Alden, in *Superalloys 1996*, edited by R. D. Kissinger *et al.* (TMS, Warrendale, PA, 1996), p. 129.
- [17] G. B. Viswanathan *et al.*, Acta Mater. **53**, 3041 (2005).
- [18] J. Telesman *et al.*, in *Superalloys 2004*, edited by K. A. Green *et al.* (TMS Publications, Warrendale, PA, 2004), p. 215.
- [19] N. S. Stoloff, in *Superalloys II*, edited by C. T. Sims, N. S. Stoloff, and W. C. Hagel (John Wiley and Sons, New York, NY, 1987), p. 61.
- [20] K. E. Yoon, R. D. Noebe, O. C. Hellman, and D. N. Seidman, Surf. Interface Anal. **36**, 594 (2004).
- [21] M. K. Miller, Micron **32**, 757 (2001).
- [22] K. E. Yoon, D. Isheim, R. D. Noebe, and D. N. Seidman, Interface Sci. **9**, 249 (2001).
- [23] D. Blavette, E. Cadel, and B. Deconihout, Mater. Charact. **44**, 133 (2000).
- [24] D. Blavette, A. Bostel, and J. M. Sarrau, Metall. Trans. A **16**, 1703 (1985).
- [25] A. Buchon, S. Chambreland, and D. Blavette, Acta Conf. Du Coll. Nat. Sup. Monoc., Nancy 129 (1990).
- [26] D. Blavette, L. Letellier, A. Racine, and A. Hazotte, Microsc., Microanal., Microstruct. **7**, 185 (1996).
- [27] P. D. Nellist and S. J. Pennycook, Science **274**, 413 (1996).
- [28] R. F. Klie, Y. Ito, S. Stemmer, and N. D. Browning, Ultramicroscopy **86**, 289 (2001).
- [29] R. F. Klie and Y. Zhu, Micron **36**, 219 (2005).
- [30] Defense Advanced Research Projects Agency, Defense Sciences Office (DSO), Engine Systems Prognosis, Contract No. HR0011-04-C-0001, HR0011-04-C-0002.
- [31] P. M. Sarosi, G. B. Viswanathan, D. Whitis, and M. J. Mills, Ultramicroscopy **103**, 83 (2005).
- [32] J. Y. Hwang *et al.*, Metall. Mater. Trans A **40**, 24 (2009).
- [33] O. C. Hellman *et al.*, Microsc. Microanal. **6**, 437 (2000).